

SECTION CORNER RECORD

BOONE COUNTY SURVEYOR'S OFFICE

NE 200-100

State Plane grid coordinates NAD83 (CORS96):

North: 1756190.19 East: 3129814.17 (U.S. survey feet)

Type of monument: Harrison, 4" disk 'Section Corner'

Depth: One inch below adjacent road surface

Indiana tie card references:

IN02_T19NR1E19_80 IN02_T19NR1E20_72

IN02_T19NR1E30_08 IN02_T19NR1E29_00

CORNER WITNESS DETAIL

SCALE 1" = 40'

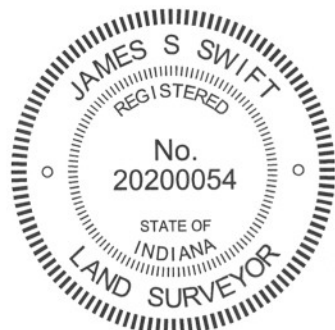
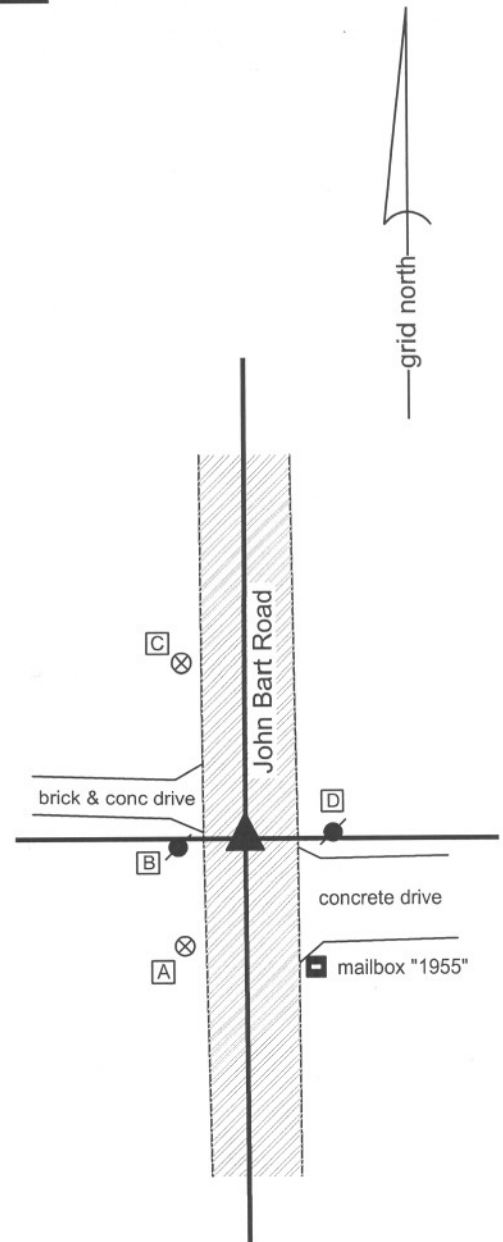
- A - Boone County witness mark, flush, 25.63'
- B - Mag nail found in S. side power pole, 3 in. a.g., 14.47'
- C - Boone County witness mark, flush, 38.88'
- D - Mag nail found in W. side power pole, 1' a.g., 16.59'

Boone County witness mark is a 3/8" diameter x 2' long rebar bearing a metal cap stamped "Boone County Witness Point."

The harrison monument was set in place of a harrison monument found. No specific descriptions of this corner were found in the BCS Surveyor's Record. A BCS tie card dated January 30, 1968 states "no stone found." A BCS tie card dated August 2, 2005 shows the corner as a harrison monument with no documentation of source.

This corner was excavated on June 26, 2012. Prior to excavation, a harrison monument was found at 2 inches below grade. Excavation revealed a vertical section of railroad rail found at 11 inches deep. The harrison monument had been 2 inches west of the position of the top of the rail. Excavation of an area extending 2.5 feet N, 2.5 feet S, 3 feet E and 2 feet W of the harrison/rail revealed no further evidence of the corner. Excavation was performed to a minimum of 17 inches, at least 3 inches into the clay layer found below the road bed. The top of the rail, as found, was held as marking the corner. The rail was removed during excavation and was replaced with a harrison monument in the same position.

This corner was originally established as a wood post in June, 1822.



Kenneth E. Hedge
 Kenneth E. Hedge, County Surveyor

James S. Swift
 James S. Swift, IN LS 20200054
 January 15, 2013

Center Township

Section 19 T19N, R1E	Section 20 T19N, R1E
Section 30 T19N, R1E	Section 29 T19N, R1E

SECTION CORNER RECORD

NE 200-150

BOONE COUNTY SURVEYOR'S OFFICE

State Plane grid coordinates NAD83 (CORS96):

North: 1756193.54 East: 3132487.38 (U.S. survey feet)

Type of monument: Harrison, 4" disk 'Section Corner'

Depth: Three inches above the adjacent ground.

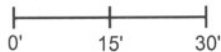
Indiana tie card references:

IN02_T19NR1E20_76

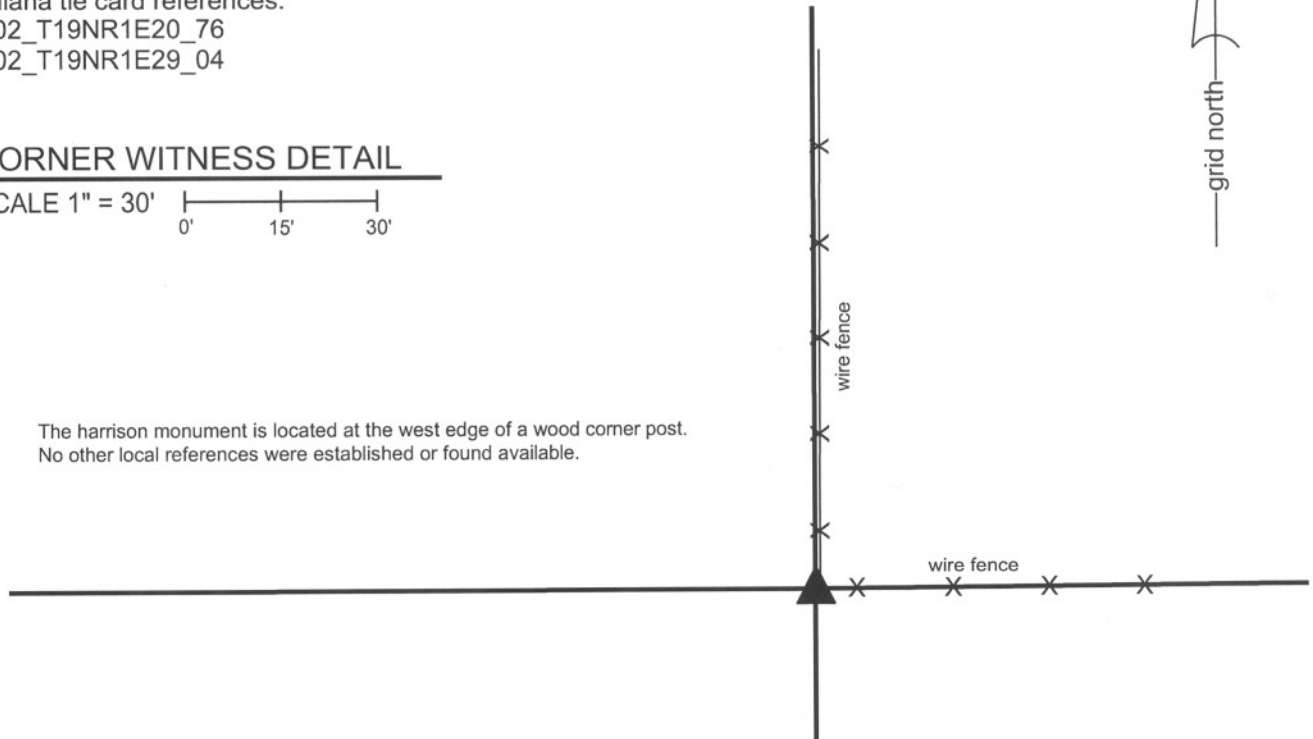
IN02_T19NR1E29_04

CORNER WITNESS DETAIL

SCALE 1" = 30'



The harrison monument is located at the west edge of a wood corner post.
No other local references were established or found available.



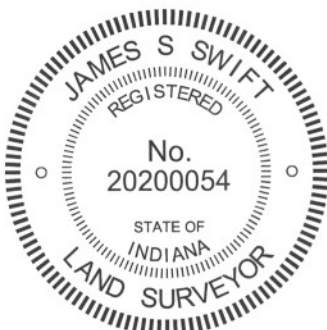
The harrison monument was set in place of a stone found.

No specific descriptions of this corner were found in the BCS Surveyor's Record, though the corner is shown as the terminal point for a measurement in 1841. A BCS tie card dated January 18, 1994 shows the corner as a corner post.

Excavation of this corner took place of November 15, 2012. A wood corner post was found with fence to the north and east, and old fencing cut off to the South. The post is leaning towards the east. Several rocks were found around the post, most of which appear to have been placed there to remove them as obstructions in the adjacent farm fields. A stone which fits some characteristics of corner stones was found along the west edge of the post.

This stone had a distinct high point 7 inches west of the west edge of the post. The stone was removed and found to be 12 inches N-S by 9 inches E-W by 15 inches tall, as it was oriented next to the post. Further excavation below the stone revealed the fact that, due to the leaning nature of the post, the stone was directly over remnants of the west edge of the base of the post. It is not known whether this stone was purposely set to mark the corner or whether it is just a rock sitting upright next to the post. However, the position of the stone relative to the post, being generally over the base of the post, is entirely reasonable as a position for the corner. No other specific evidence of the corner was found.

The top, high point of the found stone was held as marking the corner. The stone was removed and replaced with a harrison monument set in concrete. This corner was originally established as a wood post in June, 1820.



Kenneth E. Hedge
Kenneth E. Hedge, County Surveyor

James S. Swift
James S. Swift, IN LS 20200054
January 15, 2013

Center Twp

Section 20
T19N, R1E

Section 29
T19N, R1E

PHOTOGRAPHIC DOCUMENTATION

Date of photography: November 14 & 19, 2011

The corner post prior to excavation, view from the WSW.



Several rocks excavated from around the post.



The rock held as marking the corner at the west edge of the base of the post.



The harrison monument and witness marker.



For details and documentation, refer to related sheet "Section Corner Record."

SECTION CORNER RECORD

NE 200-200

BOONE COUNTY SURVEYOR'S OFFICE

State Plane grid coordinates NAD83 (CORS96):

North: 1756209.13 East: 3135148.89 (U.S. survey feet)

Type of monument: Harrison, 4" disk 'Section Corner'

Depth: One inch below adjacent road/drive surface

Indiana tie card references:

IN02_T19NR1E20_80 IN02_T19NR1E21_72

IN02_T19NR1E29_08 IN02_T19NR1E28_00

CORNER WITNESS DETAIL

SCALE 1" = 40'



- A - Boone County witness mark, flush, 29.75'
- B - Mag nail set in S.W. side power pole, 2' a.g., 40.36'
- C - Mag nail set in N. side power pole, 2' a.g., 105.10'

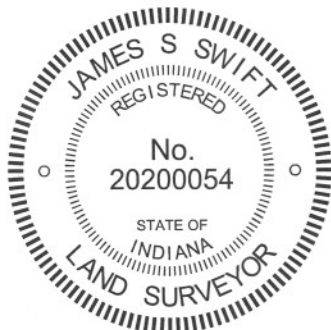
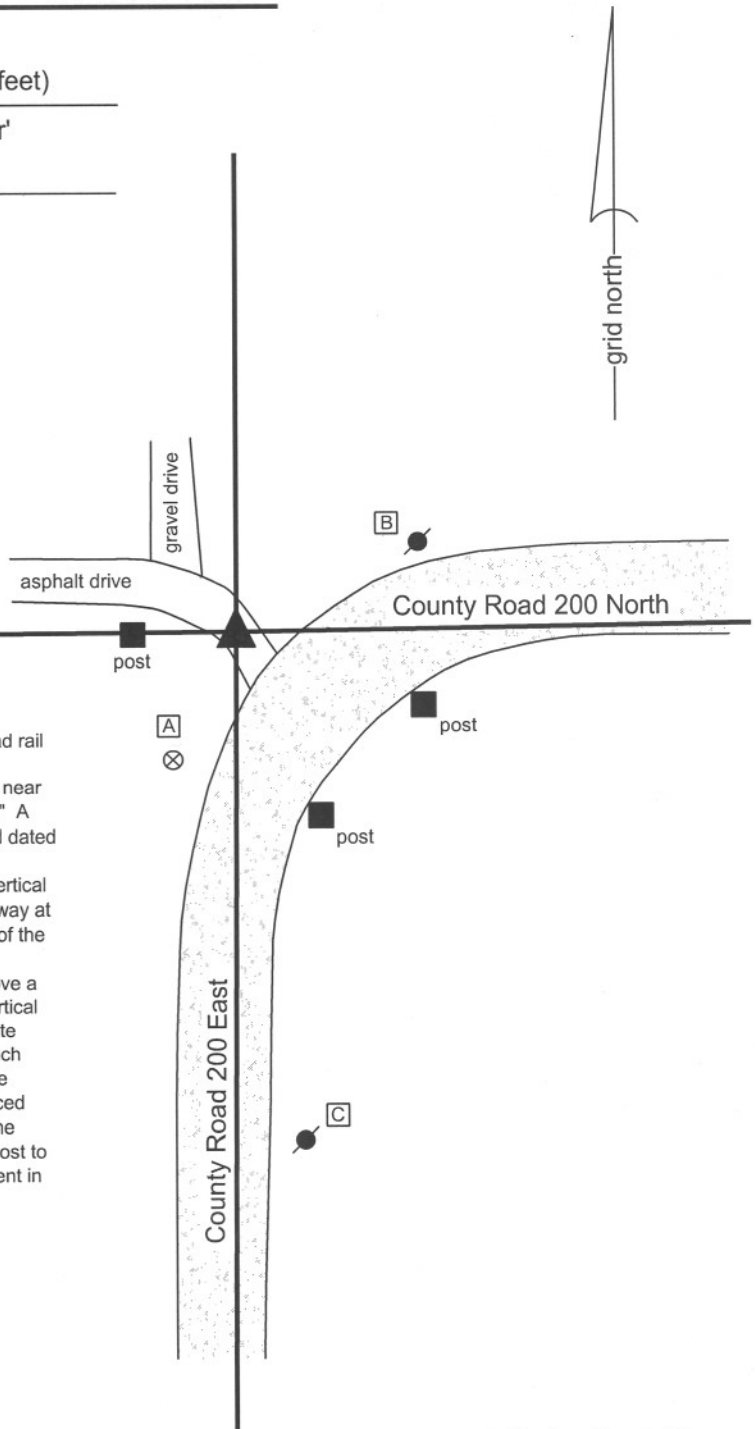
Boone County witness mark is a 3/8" diameter x 2' long rebar bearing a metal cap stamped "Boone County Witness Point."

The harrison monument was set in place of a vertical section of railroad rail found.

A BCS record dated October 29, 1868 states "Reestablished from the near Oak, the other down but here yet. Set Rock 13.12.5-1/2 in. marked +." A BCS tie card dated October 1975 states "Stone found. A BCS tie card dated July 27, 2005 shows the corner as a steel rail.

This corner was excavated on June 21, 2012. Prior to excavation a vertical section of railroad rail was found at 6 inches deep, in an asphalt driveway at a position which represents the extension of the approximate centers of the county road to the east and south. It is known that it was a common practice for BCS field crews in the late 1960s and early 1970s to remove a stone when found and replace it with a steel monument, typically a vertical section of railroad rail. The found section of steel rail is believed to date from the 1975 tie card, most likely in place of the found stone. A 15 inch diameter hole, centered on the rail, was excavated to 2 feet deep. The stone was not found and is believed to have been removed and replaced with the rail in 1975. The rail fits with local evidence of the corner in the form of the county roads to the east and south and an old wood end post to the west. The rail was removed and replaced with a harrison monument in the same position.

This corner was originally established as a wood post in June, 1822.



Kenneth E. Hedge
 Kenneth E. Hedge, County Surveyor

James S. Swift
 James S. Swift, IN LS 20200054
 January 15, 2013

Center Township

Section 20 T19N, R1E	Section 21 T19N, R1E
Section 29 T19N, R1E	Section 28 T19N, R1E

SECTION CORNER RECORD

NE 250-100

BOONE COUNTY SURVEYOR'S OFFICE

State Plane grid coordinates NAD83 (2011):

North: 1758836.88 East: 3129820.07 (U.S. survey feet)

Type of monument: Harrison, 4" disk 'Section Corner'

Depth: Flush with pile to east, six inches above ground to west

Indiana tie card references:

IN02_T19NR1E19_44 IN02_T19NR1E20_36

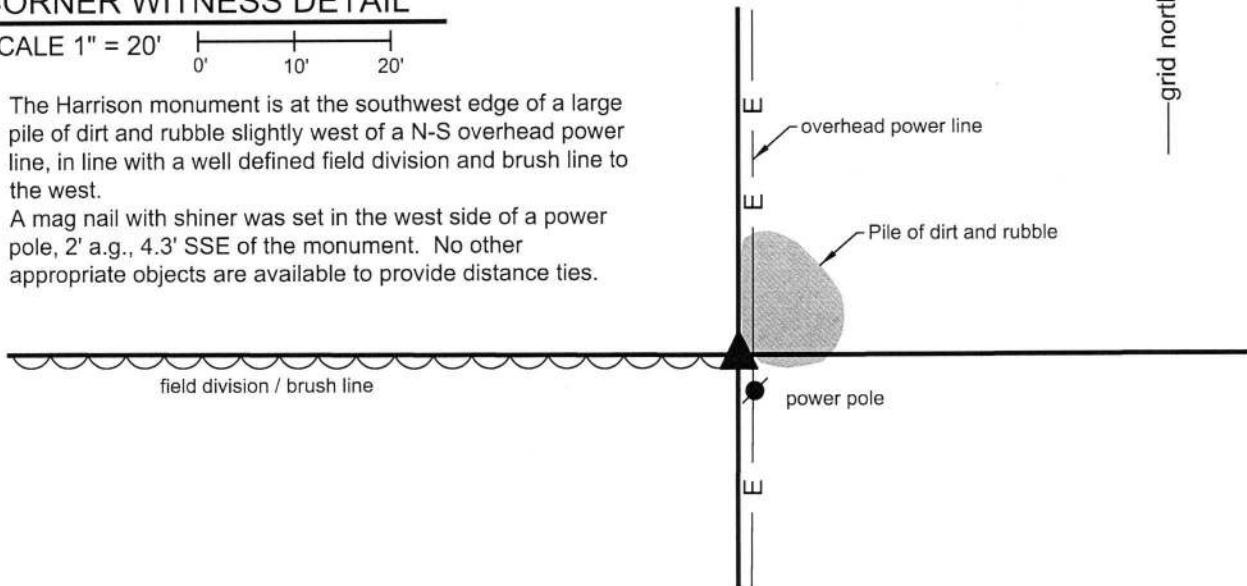
CORNER WITNESS DETAIL

SCALE 1" = 20'

0' 10' 20'

The Harrison monument is at the southwest edge of a large pile of dirt and rubble slightly west of a N-S overhead power line, in line with a well defined field division and brush line to the west.

A mag nail with shiner was set in the west side of a power pole, 2' a.g., 4.3' SSE of the monument. No other appropriate objects are available to provide distance ties.

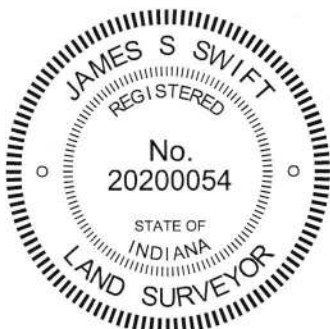


The Harrison monument was set over a 1/2 inch diameter rebar with cap stamped 'Dodge SO288.'

A BCS record dated October 2-5, 1857 states, with respect to this corner, "Reestablished. Set Rock 13x17." No recent BCS tie cards were found referencing this corner.

This corner was monumented on October 20, 2017. On first sight, it was clearly evident that significant disturbance has occurred in the vicinity of the corner. It appears that a large amount of material including dirt, rocks and fencing has been bulldozed into a pile in the immediate vicinity of the corner. The position of the corner was computed from information shown on a survey by Timothy A. Beyer, LS 20100036, recorded as Instrument 0411161 in the Office of the Boone County Recorder. This survey is the base survey for the plats of the Auburn Meadows subdivisions in the northeast quarter of section 19. The Beyer survey shows the subject corner as being a Dodge capped rebar found at the intersection of a fence to the north and a short section of fence to the west. The rebar was found at the west edge of the aforementioned pile of material, approximately 1 foot deep, buried under dirt and a variety of small stones. Wood which appeared to be the remnants of an old post were found adjacent to the rebar. It appeared that the rebar had been set at the southeast edge of the post. Several rocks were found, most of which appeared to have been transported there as part of the creation of the large pile of material. The rock described in the 1857 record was not found. The rebar was accepted as marking the corner. The rebar was left in place, driven slightly deeper into the ground and a Harrison monument was set directly above the rebar. The top several inches of the rebar were encased in concrete, along with the tops of three additional two-foot sections of 5/8 inch diameter rebar which were installed to ensure stability of the monument. The monument is flush with the part of the rubbish pile immediately adjoining it to the east, below most of the pile, and up to six inches above the adjoining ground to the west.

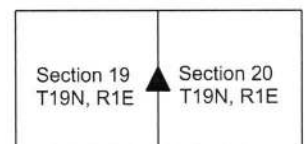
This corner was originally established as a wood post in 1822.



Kenneth E. Hedge
Kenneth E. Hedge, County Surveyor

James S. Swift
James S. Swift, IN LS 20200054
November 15, 2017

Center Township



SECTION CORNER RECORD

NE 300-100

BOONE COUNTY SURVEYOR'S OFFICE

State Plane grid coordinates NAD83 (CORS96):

North: 1761482.20 East: 3129821.45 (U.S. survey feet)

Type of monument: Harrison, 4" disk 'Section Corner'

Depth: One inch below adjacent road surface

Indiana tie card references:

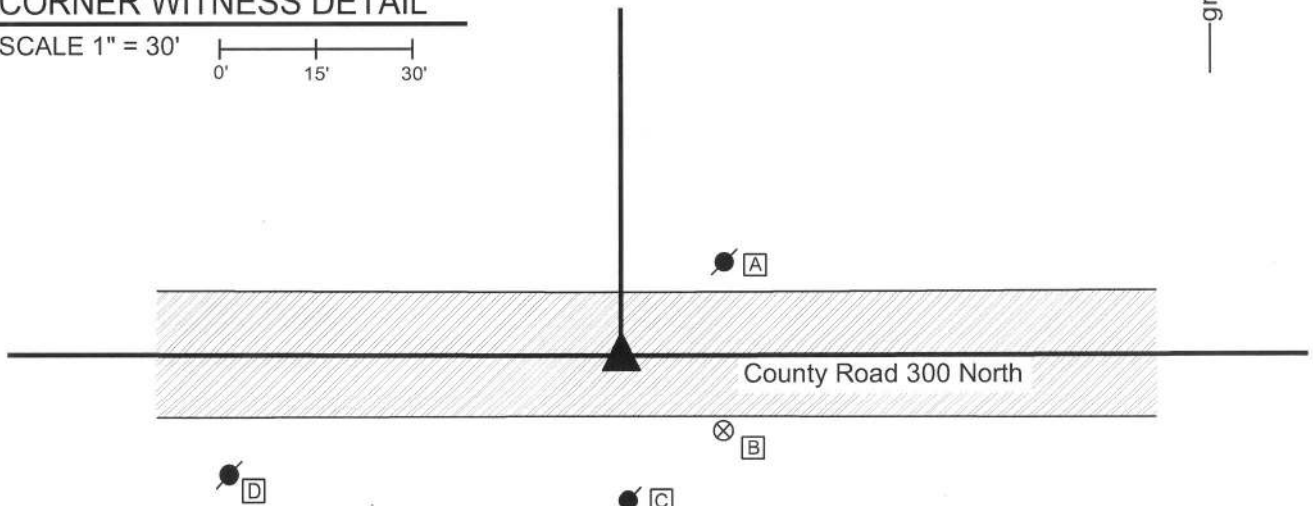
IN02_T19NR1E18_80 IN02_T19NR1E17_72

IN02_T19NR1E19_08 IN02_T19NR1E20_00



CORNER WITNESS DETAIL

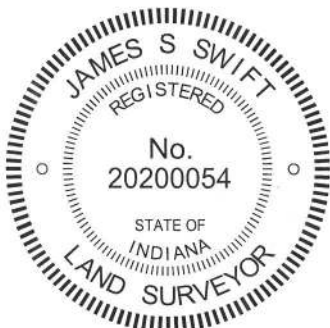
SCALE 1" = 30'



- A - Mag nail set in S. side power pole, 1' a.g., 21.3'
- B - Boone County witness mark, flush, 20.2'
- C - Mag nail set in N. side power pole, 1' a.g., 21.7'
- D - Mag nail set in N.E. side power pole, 1' a.g. 63.4'

Boone County witness mark is a 3/8" diameter x 2' long rebar bearing a metal cap stamped "Boone County Witness Point."

The harrison monument was set in place of a vertical section of railroad rail found. A BCS record of October 2, 3 & 5, 1857 states "Set Rock 9 by 11 in." A BCS tie card dated August 15, 1967 states "no stone." A BCS tie card dated July 28, 2005 shows the corner as a harrison monument with no documentation of source. This corner was excavated on November 14, 2013. Prior to excavation, a harrison monument was found at 2 inches deep in a hole in the asphalt roadway. Excavation revealed a vertical section of railroad rail at 14 inches deep, 0.2 foot north and 0.05 foot west of the position of the harrison monument which had been removed during excavation. The top of the rail is at the depth of the bottom of the road bed. Excavation of an area extending 2.7 feet north, 4 feet east, 3 feet south and 2.5 feet west of the rail revealed no further evidence of the corner. It is most likely that the rail was set in association with the creation of the 1967 tie card, as it is known that it was a common practice for BCS survey crews working at that time to set rails at the purported location of the corner. The tie card shows the rail being in line with a corner post to the north. The rail was accepted as the best available evidence of the corner. A new harrison monument was set in the position of the rail. This corner was originally established as a wood post in 1822.



Kenneth E. Hedge
Kenneth E. Hedge, County Surveyor

James S. Swift
James S. Swift, IN LS 20200054
February 5, 2015

Center Township

Section 18 T19N, R1E	Section 17 T19N, R1E
Section 19 T19N, R1E	Section 20 T19N, R1E

SECTION CORNER RECORD

NE 300-150

BOONE COUNTY SURVEYOR'S OFFICE

State Plane grid coordinates NAD83 (CORS96):

North: 1761488.86 East: 3132479.57 (U.S. survey feet)

Type of monument: Harrison, 4" disk 'Section Corner'

Depth: One inch below adjacent road surface

Indiana tie card references:

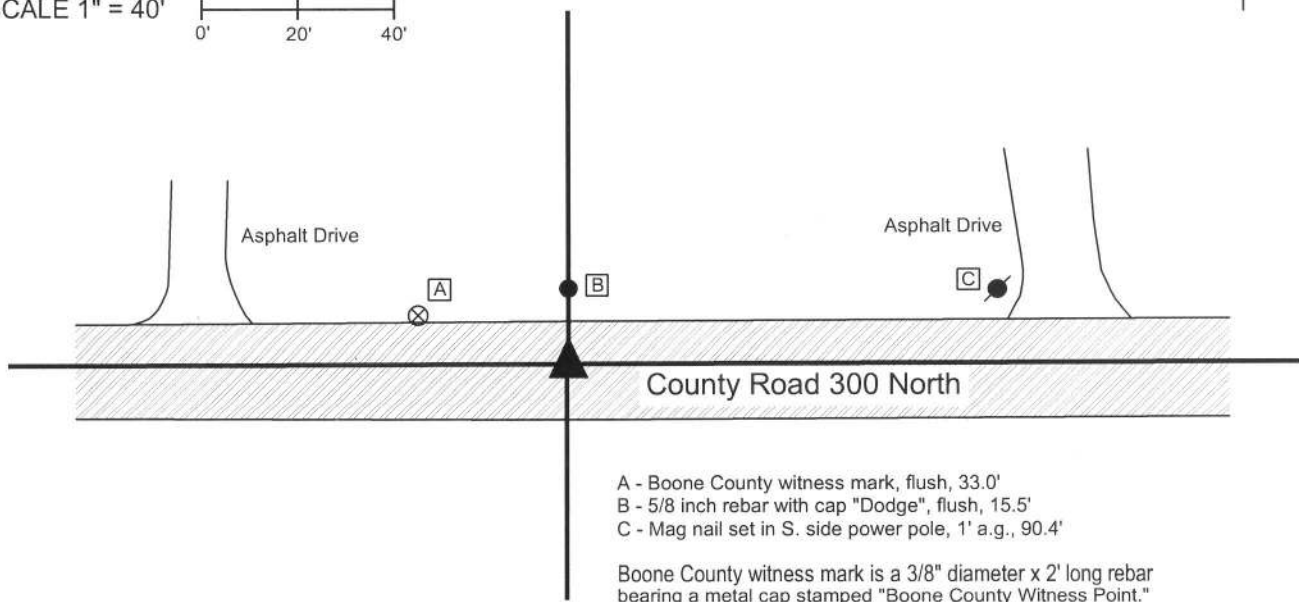
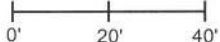
IN02_T19NR1E17_76

IN02_T19NR1E20_04



CORNER WITNESS DETAIL

SCALE 1" = 40'

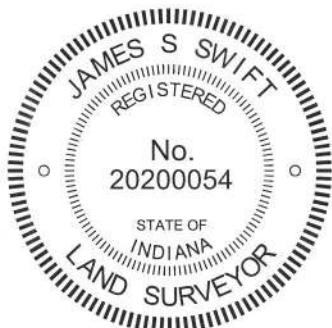


The harrison monument was set in place of a vertical section of railroad rail found.


A BCS record February 9, 1872 states "Reestablished from Oak (green). Set rock marked +." A BCS tie card dated August 18, 1967 shows the corner but does not give information about what may have been found or set. A BCS tie card dated July 28, 2005 shows the corner as a harrison monument with no documentation of source.

This corner was excavated on November 15, 2013. Prior to excavation, a Harrison monument was found at 10 inches deep in a hole in the asphalt roadway. Excavation revealed a railroad rail found below and 0.3 of a foot east and 0.05 of a foot north of the harrison. Excavation of an area extending 2 feet north, 3 feet south, 2.5 feet east and 2.5 feet west of the harrison revealed no further evidence of the corner. It is most likely that the rail was set in association with the creation of the 1967 tie card, as it is known that it was a common practice for BCS survey crews working at that time to set rails at the purported location of the corner. The 1967 tie card shows the rail being south of and slightly west of a corner post on the north side of the road but the field notes from which that card were made show the corner directly south of the corner post. The rail was accepted as the best available evidence of the corner. A new harrison monument was set in the position of the rail.

This corner was originally established as a wood post in 1822.




Kenneth E. Hedge, County Surveyor


James S. Swift, IN LS 20200054
February 5, 2015

Center
Township

Section 17
T19N, R1E

Section 20
T19N, R1E

SECTION CORNER RECORD

NE 300-200

BOONE COUNTY SURVEYOR'S OFFICE

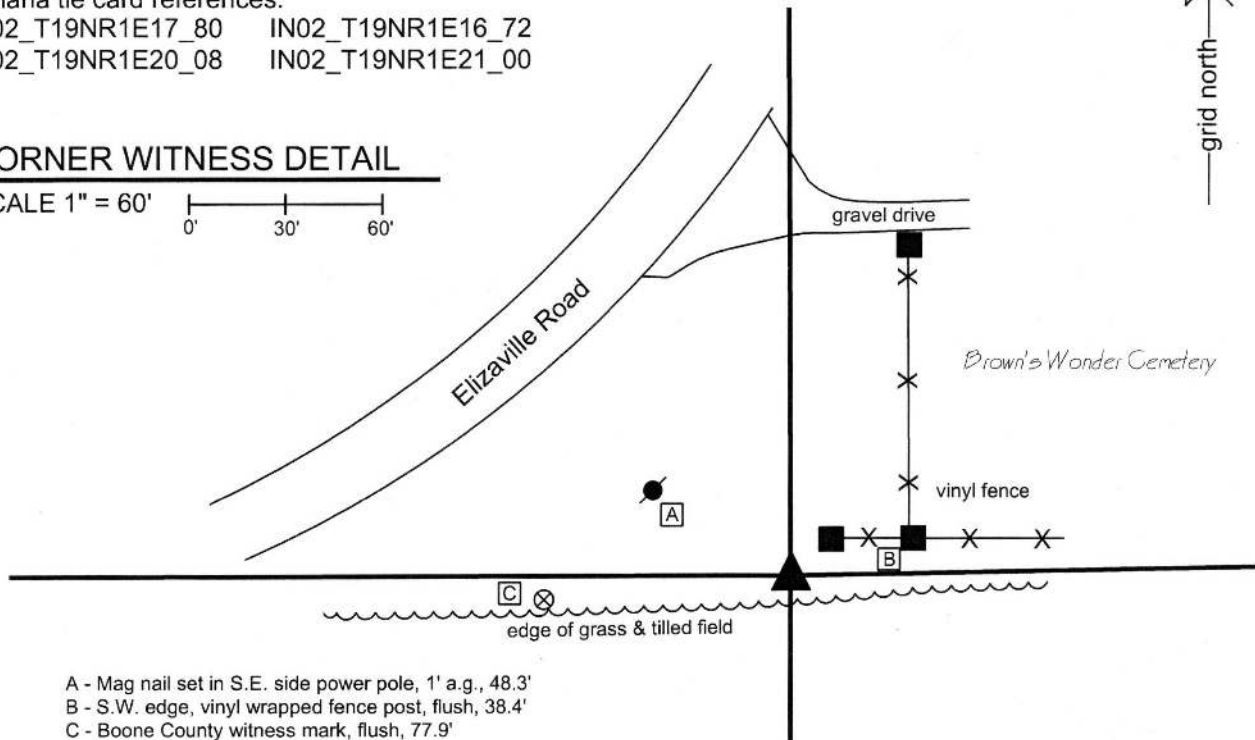
State Plane grid coordinates NAD83 (2011):
North: 1761494.82 East: 3135153.46 (U.S. survey feet)

Type of monument: Harrison, 4" disk 'Section Corner'
Depth: flush with adjacent ground

Indiana tie card references:
IN02_T19NR1E17_80 IN02_T19NR1E16_72
IN02_T19NR1E20_08 IN02_T19NR1E21_00

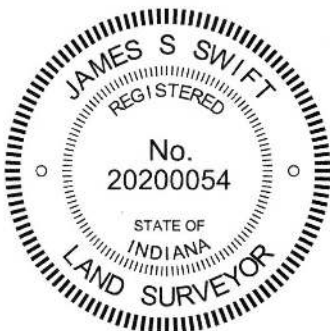
CORNER WITNESS DETAIL

SCALE 1" = 60'
0' 30' 60'



- A - Mag nail set in S.E. side power pole, 1' a.g., 48.3'
 - B - S.W. edge, vinyl wrapped fence post, flush, 38.4'
 - C - Boone County witness mark, flush, 77.9'
- Boone County witness mark is a 3/8" diameter x 2' long rebar bearing a metal cap stamped "Boone County Witness Point."

The Harrison monument was set in place of a vertical section of railroad rail found. No specific descriptions of this corner were found in the BCS Surveyors Record. A BCS tie card dated August 16, 1967 states "no stone." A BCS tie card dated July 28, 2005 shows the corner as a Harrison monument with no documentation of source. This corner was excavated on October 10, 2013. Prior to excavation a Harrison monument was found at 2 inches below the grade of the adjoining ground. Excavation revealed a vertical section of railroad rail found at 11 inches deep, directly below the Harrison. Further excavation of an area extending 4 feet in all cardinal directions from the found monuments revealed no further evidence of the corner. The clay layer below the top soil was found at 16 inches deep. Excavation was performed to a minimum depth of 18 inches. The rail and Harrison fit with local evidence in the form of aligning with the roadways to the north and west also being in line with the field division to the south. The two found monuments were accepted as representing the best available evidence of the corner. A new Harrison monument was set in place of the old Harrison and railroad rail. This corner was originally established as a wood post in 1822.



Kenneth E. Hedge
Kenneth E. Hedge, County Surveyor

James S. Swift
James S. Swift, IN LS 20200054
March 24, 2016

Center Township

Section 17 T19N, R1E	Section 16 T19N, R1E
Section 20 T19N, R1E	Section 21 T19N, R1E