

SECTION CORNER RECORD

SE 300-700

BOONE COUNTY SURVEYOR'S OFFICE

State Plane grid coordinates NAD83 (NSRS 2007):
North: 1730580.62 East: 3161992.08 (U.S. survey feet)

Type of monument: Harrison, 4" disk 'Section Corner'
Depth: One inch below adjacent road surface

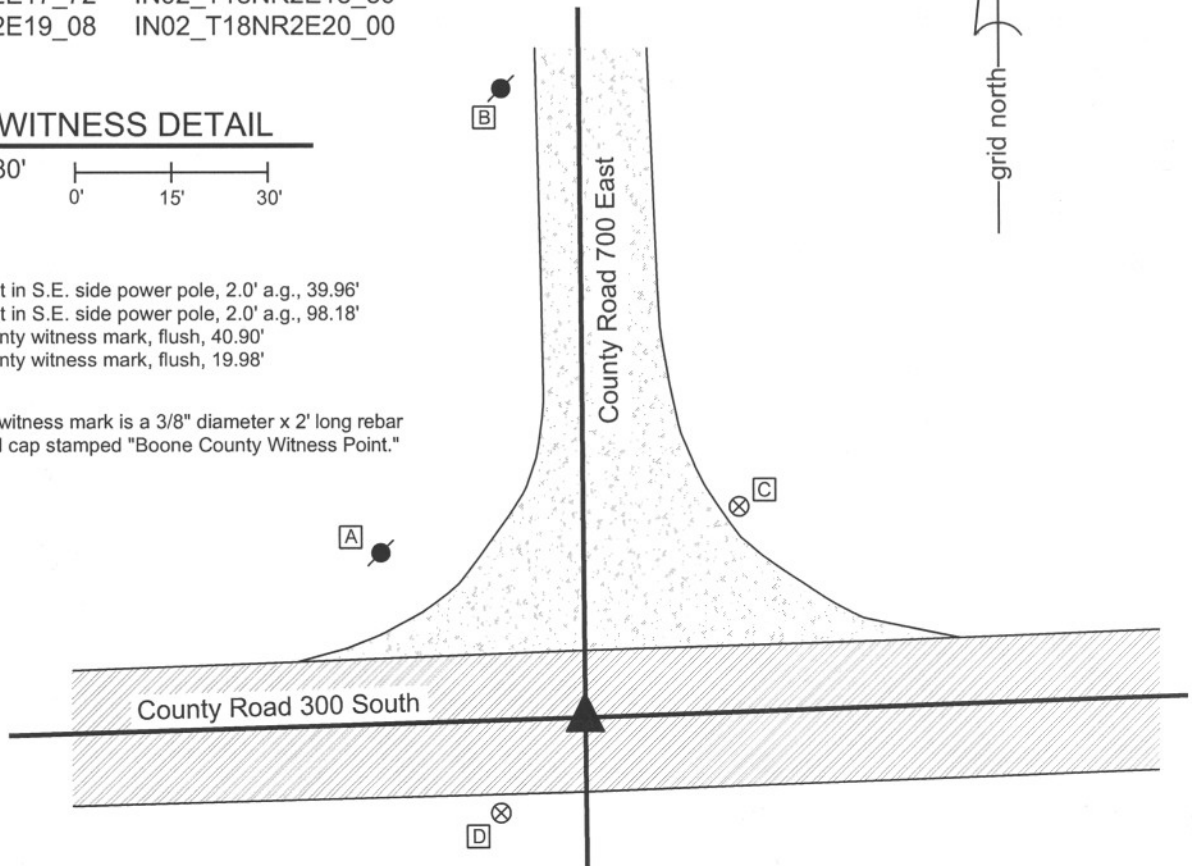
Indiana tie card references:
IN02_T18NR2E17_72 IN02_T18NR2E18_80
IN02_T18NR2E19_08 IN02_T18NR2E20_00

CORNER WITNESS DETAIL

SCALE 1" = 30'
0' 15' 30'

- A - Mag nail set in S.E. side power pole, 2.0' a.g., 39.96'
- B - Mag nail set in S.E. side power pole, 2.0' a.g., 98.18'
- C - Boone County witness mark, flush, 40.90'
- D - Boone County witness mark, flush, 19.98'

Boone County witness mark is a 3/8" diameter x 2' long rebar bearing a metal cap stamped "Boone County Witness Point."



The harrison monument was set in place of a railroad rail found. A BCS record of August 17, 1869 calls for "a stone that was set." A BCS tie card dated May 3, 1967 states "stone found." This corner was excavated on July 15, 2008. Prior to excavation, a railroad spike was visible 2 inches deep in a hole in the asphalt. Excavation revealed a railroad rail 10 inches deep, 0.15 foot W and 0.05 foot S of the railroad spike. Both were removed. Further excavation yielded a small stone found at 24 inches deep. The stone measured 10 inches E-W by 6 inches N-S by 5 inches thick. The top, center of the stone was 0.3 foot south of the rail. It is not clear whether this stone is the the stone of record, nor is it clear whether this was the stone found in 1967. If is the stone of 1967, it is not known whether it was left undisturbed at the time of the setting of the rail. It is known that the common practice by field crews from this office during that time was to remove the stone entirely and set a rail in its place, when a stone was found. The most likely occurrence was exactly that: the stone was removed and replaced with the rail and that the small stone is not the true corner stone. No other monuments were found. The rail was accepted as providing the best evidence of the original location of the corner stone and the harrison monument was set in the position of the rail. This corner was originally established as a wood post in July, 1821.



Kenneth E. Hedge
Kenneth E. Hedge, County Surveyor

James S. Swift
James S. Swift, IN LS 20200054

March 11, 2009

Worth Township

Section 18 T18N, R2E	Section 17 T18N, R2E
Section 19 T18N, R2E	Section 20 T18N, R2E

SECTION CORNER RECORD

SE 300-750

BOONE COUNTY SURVEYOR'S OFFICE

State Plane grid coordinates NAD83 (NSRS 2007):

North: 1730673.54 East: 3164638.12 (U.S. survey feet)

Type of monument: Harrison, 4" disk 'Section Corner'

Depth: One inch below adjacent road surface

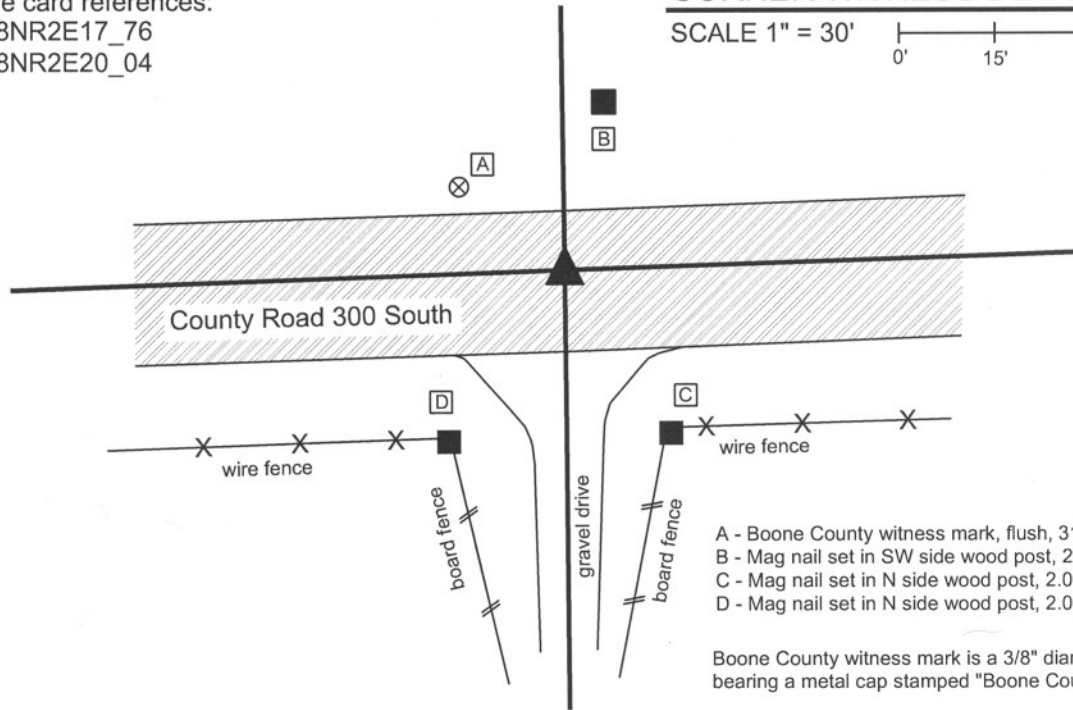
Indiana tie card references:

IN02_T18NR2E17_76

IN02_T18NR2E20_04

CORNER WITNESS DETAIL

SCALE 1" = 30'



- A - Boone County witness mark, flush, 31.18'
- B - Mag nail set in SW side wood post, 2.0' a.g., 25.00'
- C - Mag nail set in N side wood post, 2.0' a.g., 29.38'
- D - Mag nail set in N side wood post, 2.0' a.g., 31.96'

Boone County witness mark is a 3/8" diameter x 2' long rebar bearing a metal cap stamped "Boone County Witness Point."

The harrison monument was set in place of two record stones found.

A BCS record of March 26, 1902 states "Set Rock 10,6,4 + Under rock 10 1/2,10, 5" (Note, the number 5 is shown on the original record for this record. The transcription in the 1912 comprehensive corner stone record shows the number 15.) No BCS tie cards were found for this corner.

This corner was excavated on July 23, 2008. Prior to excavation, a pinched iron pipe was visible in a hole 3 inches deep. The area of excavation extended from the pipe on the east edge, west for 5 feet, as analysis of the relative location of this corner with respect to surrounding corners indicated that the pipe may be further east than the original corner. Excavation revealed a stone found below and immediately west of the iron pipe. (The iron pipe was driven along the east edge of the stone.) This stone measured 13 inches N-S at the base by 4 1/2 inches E-W by 14 inches tall. It was positioned almost entirely in the gravelly material below the asphalt, with only the bottom 2 inches protruding into the base clay layer. This stone does not match the dimensions of the record stone. The record stone was found west (2.8 feet west and 0.7 feet north of the iron pipe, now removed). The record stone measured 6 inches N-S by 4 inches E-W by 10 inches tall. It was also positioned primarily in the gravelly material below the asphalt. The record lower stone ("under rock") was found immediately below the record top stone, measuring 10 inches E-W by 10 inches N-S by 5 inches thick. This stone was completely in the clay layer. A fourth stone was found 4 feet south of the record stone at 16 inches deep, measuring 10 inches E-W by 10 inches N-S by 8 inches thick. It was also mostly in the gravelly material below the asphalt. The only stone of the four embedded in the clay was the record bottom stone. It is not made clear in the 1902 record exactly why the corner was established where it was nor is it clear when each of the 2 non-record stones were set. It is clear, however, that the record stones are present, apparently undisturbed, and fit better relative to surrounding corners both with respect to original federal measurements and the 1902 measurements than the pipe and stone to the east. The stones to the east and south appear to be witness stones. The two record stones were accepted as the best evidence of the original location of the corner and the harrison monument was set in place of them. All four stones were removed.

This corner was originally established as a wood post in July, 1821.



Kenneth E. Hedge

 Kenneth E. Hedge, County Surveyor

James S. Swift

 James S. Swift, IN LS 20200054

March 11, 2009

Worth Township

Section 17
T18N, R2E

▲
 Section 20
T18N, R2E

PHOTOGRAPHIC DOCUMENTATION

Date of photography: July 23, 2008

Top record corner stone (left)
and witness stone to east (right)



Lower record corner stone (left)
and witness stone to east (right)



Three stones - overhead view from northwest



View from west looking east across top
record corner stone and witness stone to
east, along County Road 300 South.



Three stones - overhead view from East



witness stone to south
lower record corner stone
witness stone to east

witness stone to south
witness stone to east

lower record corner stone

For details and documentation, refer to
related sheet "Section Corner Record."

SECTION CORNER RECORD

SE 300-800

BOONE COUNTY SURVEYOR'S OFFICE

State Plane grid coordinates NAD83 (NSRS 2007):

North: 1730761.50 East: 3167275.08 (U.S. survey feet)

Type of monument: Harrison, 4" disk 'Section Corner'

Depth: One inch below adjacent road surface

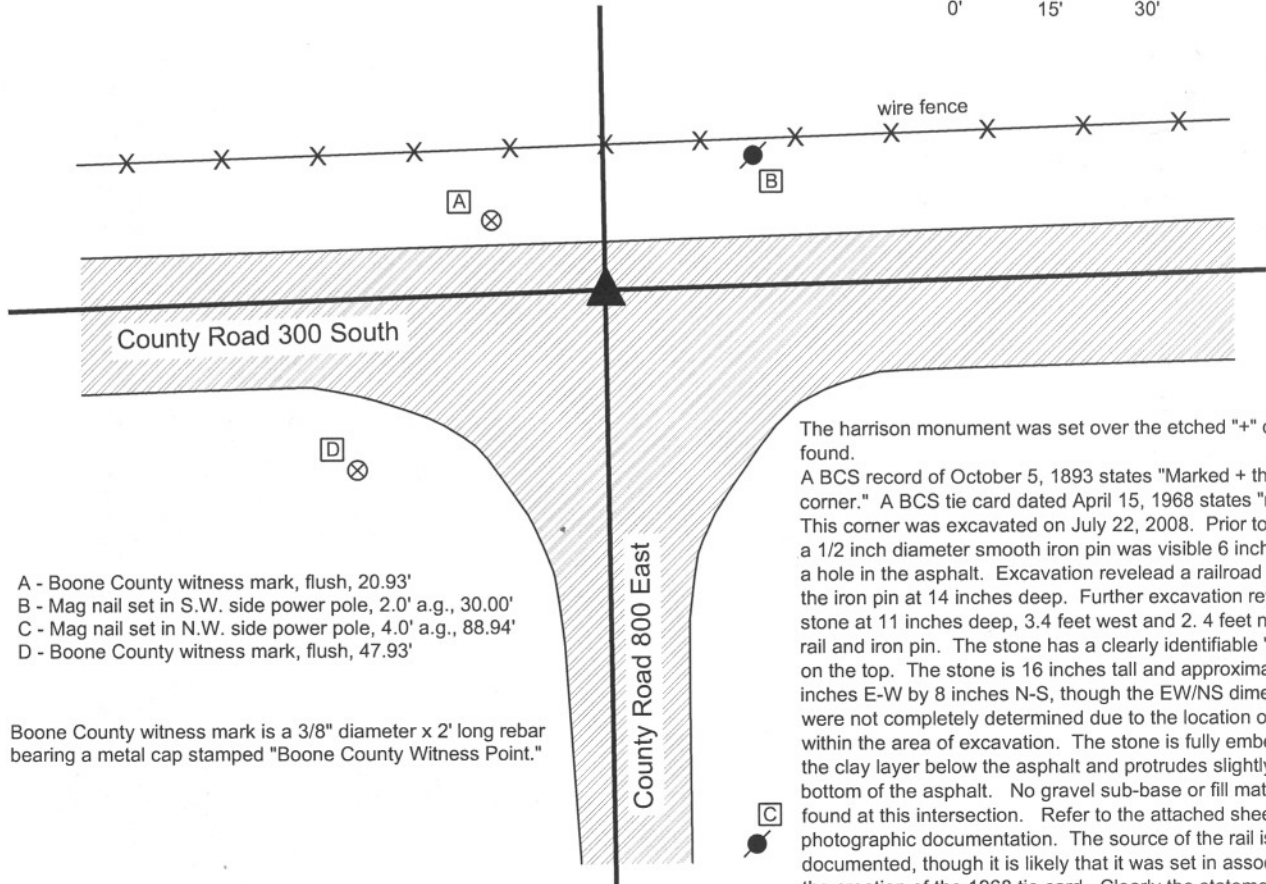
Indiana tie card references:

IN02_T18NR2E16_72 IN02_T18NR2E17_80

IN02_T18NR2E21_00 IN02_T18NR2E20_08

CORNER WITNESS DETAIL

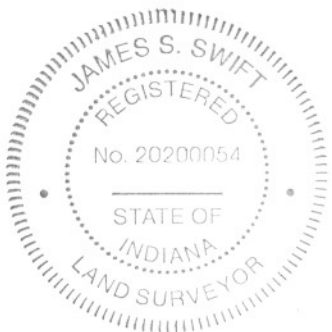
SCALE 1" = 30'



- A - Boone County witness mark, flush, 20.93'
- B - Mag nail set in S.W. side power pole, 2.0' a.g., 30.00'
- C - Mag nail set in N.W. side power pole, 4.0' a.g., 88.94'
- D - Boone County witness mark, flush, 47.93'

Boone County witness mark is a 3/8" diameter x 2' long rebar bearing a metal cap stamped "Boone County Witness Point."

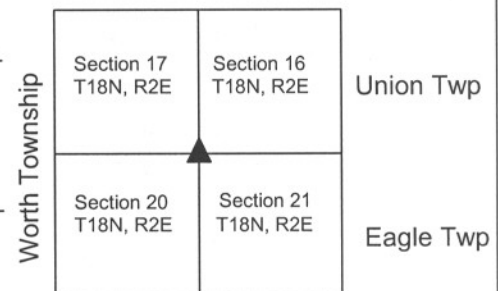
The harrison monument was set over the etched "+" on a stone found. A BCS record of October 5, 1893 states "Marked + the rock at corner." A BCS tie card dated April 15, 1968 states "no stone." This corner was excavated on July 22, 2008. Prior to excavation a 1/2 inch diameter smooth iron pin was visible 6 inches deep in a hole in the asphalt. Excavation revealed a railroad rail below the iron pin at 14 inches deep. Further excavation revealed a stone at 11 inches deep, 3.4 feet west and 2.4 feet north of the rail and iron pin. The stone has a clearly identifiable "+" etched on the top. The stone is 16 inches tall and approximately 8 inches E-W by 8 inches N-S, though the EW/NS dimensions were not completely determined due to the location of the stone within the area of excavation. The stone is fully embedded in the clay layer below the asphalt and protrudes slightly into the bottom of the asphalt. No gravel sub-base or fill material was found at this intersection. Refer to the attached sheet for photographic documentation. The source of the rail is not documented, though it is likely that it was set in association with the creation of the 1968 tie card. Clearly the statement of "no stone" on that tie card is erroneous. The statement of "marked + the rock at corner" on the 1893 tie card indicates that the rock was present prior to this and marked at that time. The marking, vertical orientation, the placement embedded in the clay and the lack of other similar object in the intersection leave minimal uncertainty as to whether this is the old corner stone, hence best available evidence of the original location of the corner. The harrison monument was set over the etched "+" on the stone. This corner was originally established in July, 1821.



Kenneth E. Hedge
 Kenneth E. Hedge, County Surveyor

James S. Swift
 James S. Swift, IN LS 20200054

March 11, 2009



PHOTOGRAPHIC DOCUMENTATION

Date of photography: July 22, 2008

Corner stone - view of south half of stone, exposed in corner of hole, from southeast.



View from East, looking across south half of stone along County Road 300 South.



Corner stone - overhead view from south, showing top of stone after hole was refilled and a new area cut out above stone.



Same view as to left, with chiseled "+" on the top of the stone enhanced for ease of visual detection.



SECTION CORNER RECORD

SE 350-700

BOONE COUNTY SURVEYOR'S OFFICE

State Plane grid coordinates NAD83 (NSRS 2007):

North: 1727938.98 East: 3162016.02 (U.S. survey feet)

Type of monument: Harrison, 4" disk 'Section Corner'

Depth: four inches above adjacent ground

Indiana tie card references:

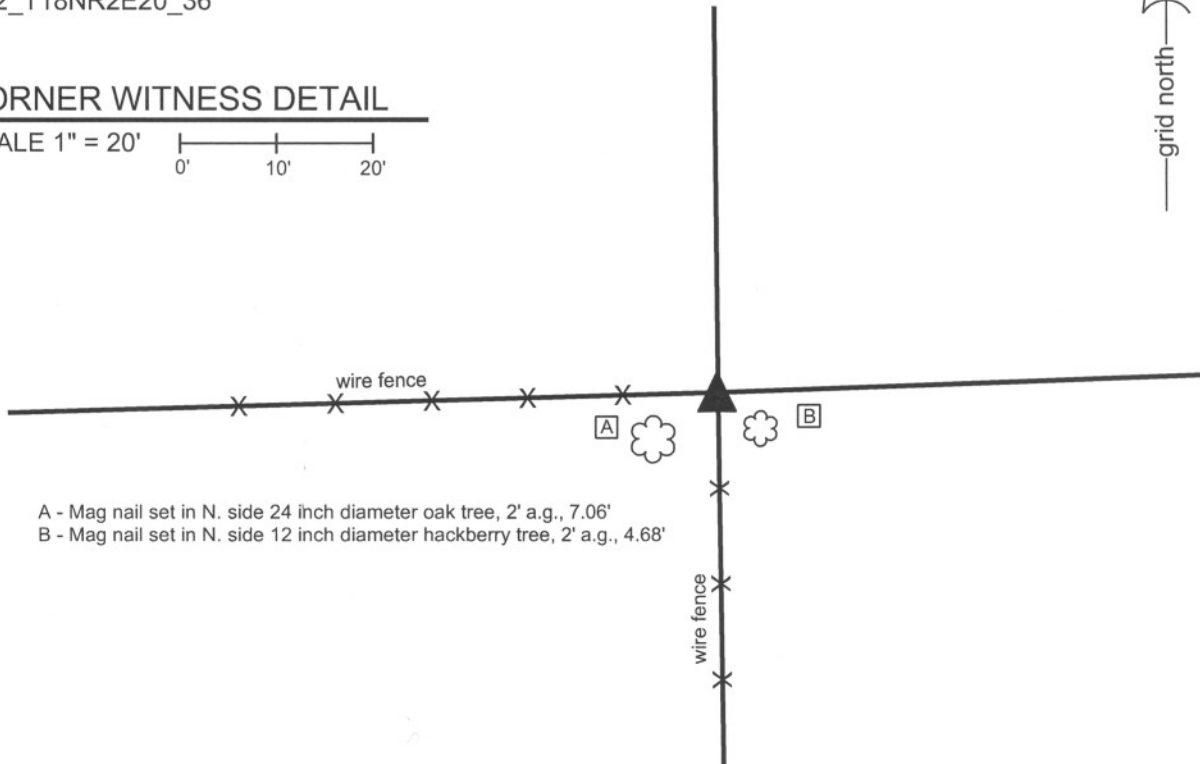
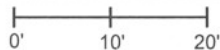
IN02_T18NR2E19_44

IN02_T18NR2E20_36



CORNER WITNESS DETAIL

SCALE 1" = 20'



A - Mag nail set in N. side 24 inch diameter oak tree, 2' a.g., 7.06'

B - Mag nail set in N. side 12 inch diameter hackberry tree, 2' a.g., 4.68'

The harrison monument was set in place of a stone found.

A BCS record of December 15, 1871 states "Reestablished Set Rock 14.9.6 +." No recent BCS tie cards were found for this corner.

This corner was excavated on December 19, 2009. Prior to excavation an iron pipe was visible protruding to 6 inches above grade. The iron pipe was at the northwest edge of a hackberry tree which falls at the intersection of fences to the west and south. The fences are old and generally on the ground. Parts of the old corner post were visible lying on the ground near the tree. Excavation revealed the record stone at the north edge of the tree, approximately 10 inches north and 3 inches east of the iron pipe. The top of the stone was at 3 inches below grade. An etched "+" was clearly visible on the top of the stone and the dimensions of the stone matched the 1871 record. The stone, pipe and the hackberry tree were all removed and a harrison monument was set in place of the stone.

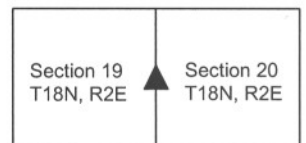
This corner was originally established as a wood post in 1820.



Kenneth E. Hedge
Kenneth E. Hedge, County Surveyor

James S. Swift
James S. Swift, IN LS 20200054
July 25, 2011

Worth Township



PHOTOGRAPHIC DOCUMENTATION

Date of photography: December 17, 2009

View of the corner prior to excavation.



View of the corner after the stone was found and replaced with a harrison monument. The hackberry tree which had been adjacent to the stone is visible behind the monument, uprooted and pushed to the south and west.



The stone and iron pipe, view from the north.



The stone and iron pipe, view from the northeast.



For details and documentation, refer to related sheet "Section Corner Record."

SECTION CORNER RECORD

SE 350-800

BOONE COUNTY SURVEYOR'S OFFICE

State Plane grid coordinates NAD83 (NSRS 2007):

North: 1728119.85 East: 3167314.70 (U.S. survey feet)

Type of monument: Harrison, 4" disk 'Section Corner'

Depth: One inch below adjacent road surface

Indiana tie card references:

IN02_T18NR2E20_44

IN02_T18NR2E21_36



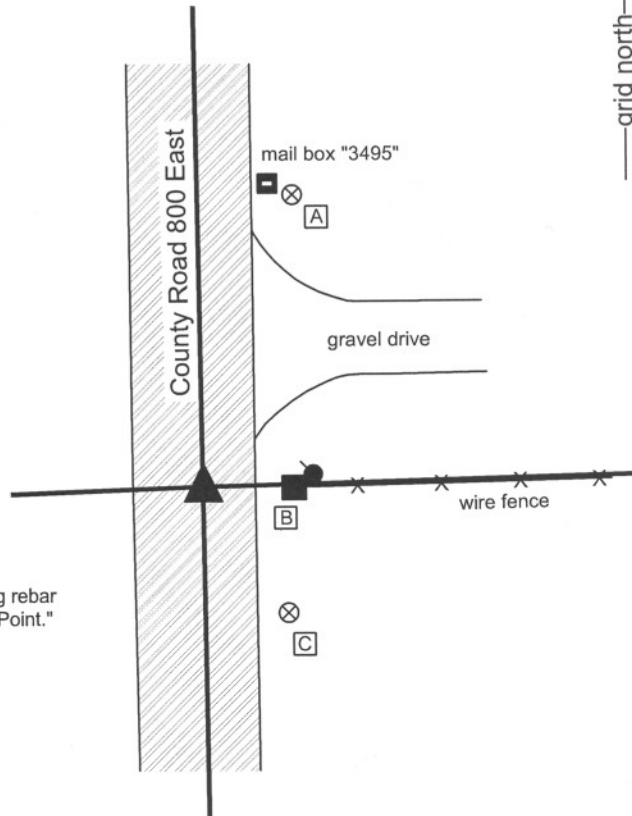
CORNER WITNESS DETAIL

SCALE 1" = 30'



- A - Boone County witness mark, flush, 47.77'
- B - Mag nail set in W. side wood post, 1' a.g., 14.15'
- C - Boone County witness mark, flush, 23.74'

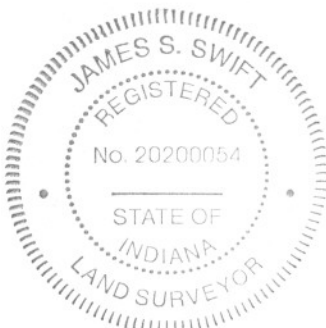
Boone County witness mark is a 3/8" diameter x 2' long rebar bearing a metal cap stamped "Boone County Witness Point."



The Harrison monument was set over the top, high point of a stone found.

No specific BCS stone records were found identifying this corner, though measurements shown on 1853 and 1861 records include this corner, indicating the presence of some physical object from which to measure. No BCS tie cards were found for this corner. Excavation occurred on September 16, 2008. Prior to excavation, a 1/2 inch diameter rebar was found approximately 1 inch deep in the center of County Road 800 East at the westerly prolongation of the old fence to the east. The source of the rebar is not known. Excavation revealed a large stone 14 inches deep, slightly east of the rebar. The stone measures 20 inches E-W by 20 inches N-S by 8 inches thick and is fully embedded in the clay layer below the road. Several smaller rocks were found around the stone. The top, center of the stone is 0.1 foot south and 1.4 feet east of the position of the rebar (removed). The stone was accepted as the best evidence of the original location of the corner and the Harrison monument was set over the top, center of the stone, which was left in place.

This corner was originally established as a wood post in July, 1821.



Kenneth E. Hedge
Kenneth E. Hedge, County Surveyor

James S. Swift
James S. Swift, IN LS 20200054
March 11, 2009

Worth Twp Eagle Twp

Section 20 T18N, R2E	▲	Section 21 T18N, R2E
-------------------------	---	-------------------------

PHOTOGRAPHIC DOCUMENTATION

Date of photography: September 16, 2008

Corner stone - overhead view from south.



Corner stone - overhead view from west.



View from west looking across corner stone to wood end post to east. End post is the westerly terminus of an existing, old fence.



SECTION CORNER RECORD

SE 400-700

BOONE COUNTY SURVEYOR'S OFFICE

State Plane grid coordinates NAD83 (NSRS 2007):

North: 1725318.25 East: 3162053.92 (U.S. survey feet)

Type of monument: Harrison, 4" disk 'Section Corner'

Depth: Two inches above adjacent ground

Indiana tie card references:

IN02_T18NR2E19_80 IN02_T18NR2E20_72

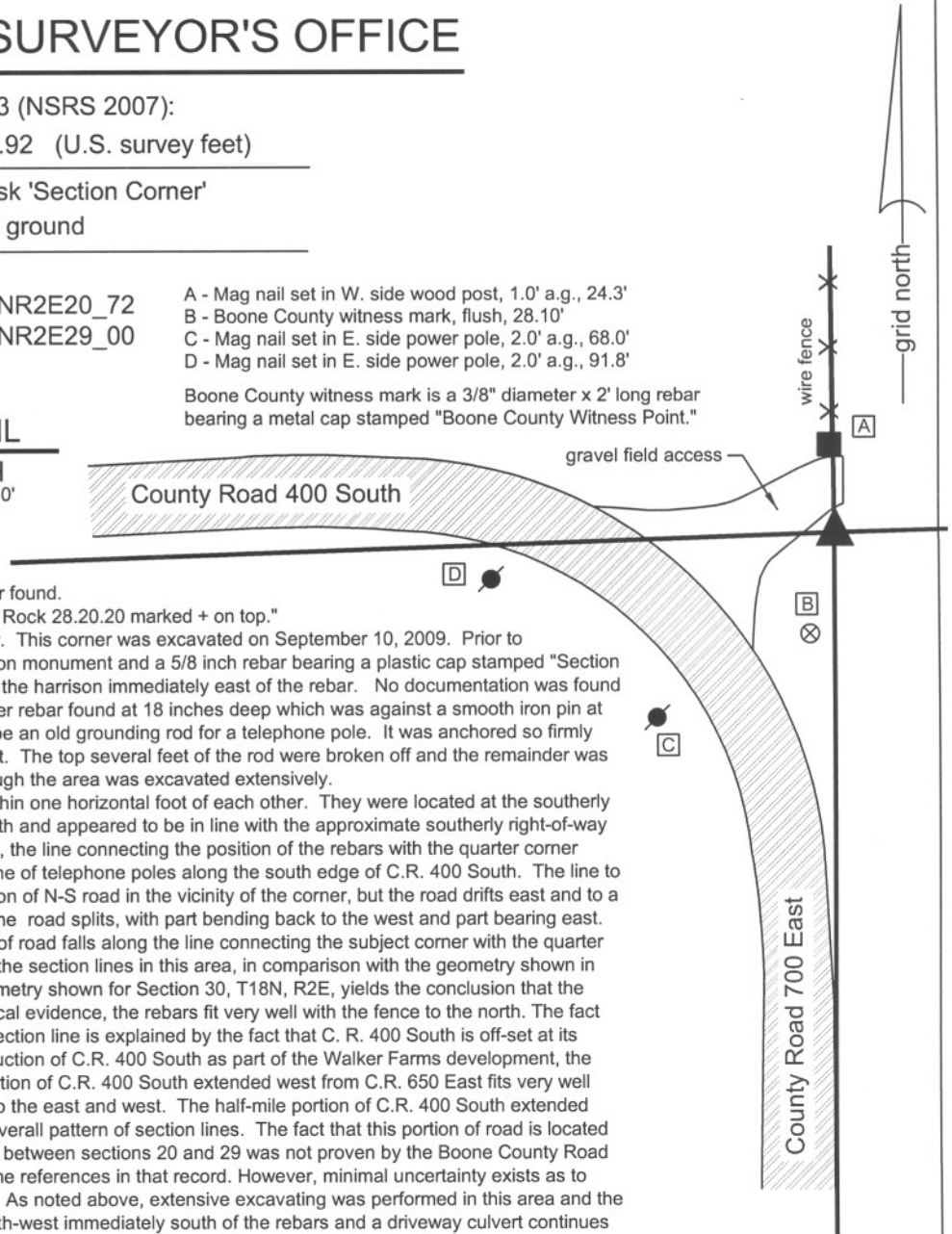
IN02_T18NR2E30_08 IN02_T18NR2E29_00

- A - Mag nail set in W. side wood post, 1.0' a.g., 24.3'
- B - Boone County witness mark, flush, 28.10'
- C - Mag nail set in E. side power pole, 2.0' a.g., 68.0'
- D - Mag nail set in E. side power pole, 2.0' a.g., 91.8'

Boone County witness mark is a 3/8" diameter x 2' long rebar bearing a metal cap stamped "Boone County Witness Point."

CORNER WITNESS DETAIL

SCALE 1" = 50'



The harrison monument was set in place of a rebar found.

A BCS record of 1866 states "ReEstablished Set a Rock 28.20.20 marked + on top."

No recent BCS tie cards were found for this corner. This corner was excavated on September 10, 2009. Prior to excavation, two monuments were visible: a harrison monument and a 5/8 inch rebar bearing a plastic cap stamped "Section Corner." The two monuments were adjacent, with the harrison immediately east of the rebar. No documentation was found for these monuments. Excavation revealed another rebar found at 18 inches deep which was against a smooth iron pin at the same depth. The smooth iron pin appears to be an old grounding rod for a telephone pole. It was anchored so firmly and deeply that an excavator was not able to pull it. The top several feet of the rod were broken off and the remainder was left in place. The record stone was not found, though the area was excavated extensively.

The various found monuments were all located within one horizontal foot of each other. They were located at the southerly prolongation of an old north-south fence to the north and appeared to be in line with the approximate southerly right-of-way of County Road 400 South to the west. Physically, the line connecting the position of the rebars with the quarter corner one-half mile west falls immediately south of the line of telephone poles along the south edge of C.R. 400 South. The line to the south from the rebars is east of the short section of N-S road in the vicinity of the corner, but the road drifts east and to a point approximately one-eighth mile south where the road splits, with part bending back to the west and part bearing east. At this point, the intersection of the three portions of road falls along the line connecting the subject corner with the quarter corner one-half mile south. Extensive analysis of the section lines in this area, in comparison with the geometry shown in the BCS "Surveyor's Record," particularly the geometry shown for Section 30, T18N, R2E, yields the conclusion that the rebars are in a reasonable position. In terms of local evidence, the rebars fit very well with the fence to the north. The fact that the east-west section of road is north of the section line is explained by the fact that C. R. 400 South is off-set at its intersection with C. R. 650 East. Prior to reconstruction of C.R. 400 South as part of the Walker Farms development, the road was off-set by approximately 19 feet. The portion of C.R. 400 South extended west from C.R. 650 East fits very well with the overall pattern of section lines extended to the east and west. The half-mile portion of C.R. 400 South extended east from C.R. 650 East clearly falls north of the overall pattern of section lines. The fact that this portion of road is located entirely in section 20, rather running along the line between sections 20 and 29 was not proven by the Boone County Road record due to difficulties with the indexing and name references in that record. However, minimal uncertainty exists as to which portion of the road is along the section line. As noted above, extensive excavating was performed in this area and the record stone was not found. A side ditch runs north-west immediately south of the rebars and a driveway culvert continues northwest to the west of the rebars. The analysis of the surrounding lines and corners indicates that the corner may be up to 6 feet south and up to 12 feet west. However, if the record stone were further west and south, within this area of uncertainty, it would fall within the side ditch, culvert or areas disturbed by the excavation thereof. Although it appears that the found rebars may have been set in their precise position due to the presence of a grounding rod for a power pole, they do generally fit with surrounding evidence and have been held for the known surveys in the area. The lower rebar, found adjacent to the smooth iron pin, was held as the specific location for the corner. The harrison monument had been 0.3 of a foot south of this and the capped rebar was the same amount south and also 0.4 of a foot west. This corner was originally established as a wood post in July, 1821.



Kenneth E. Hedge
 Kenneth E. Hedge, County Surveyor

James S. Swift
 James S. Swift, IN LS 20200054
 July 14, 2010

Worth Township

Section 19 T18N, R2E	Section 20 T18N, R2E
Section 30 T18N, R2E	Section 29 T18N, R2E

SECTION CORNER RECORD

SE 400-750

BOONE COUNTY SURVEYOR'S OFFICE

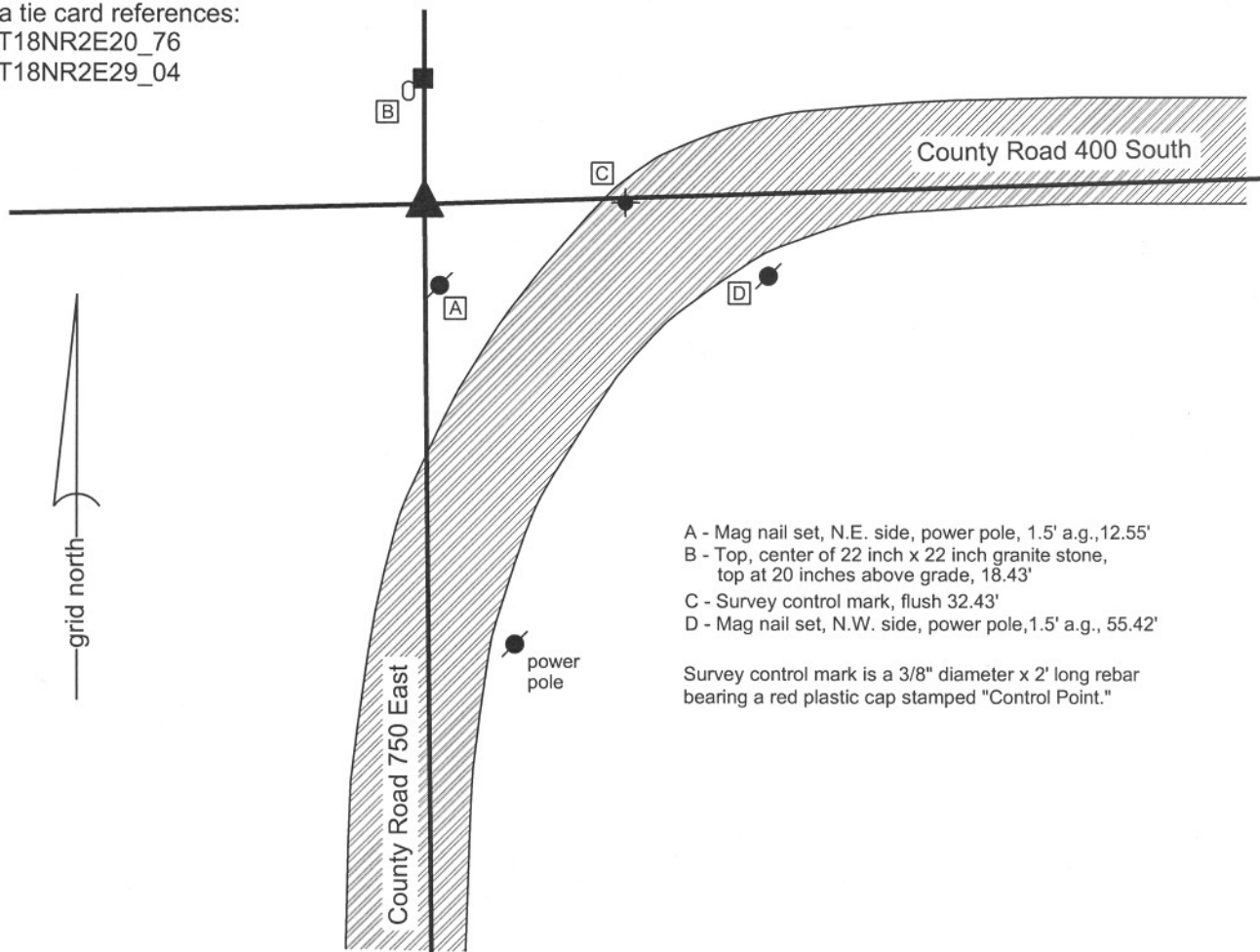
State Plane grid coordinates NAD83 (NSRS 2007):
 North: 1725393.91 East: 3164686.28 (U.S. survey feet)

Type of monument: Harrison, 4" disk 'Section Corner'
 Depth: Flush with ground

Indiana tie card references:
 IN02_T18NR2E20_76
 IN02_T18NR2E29_04

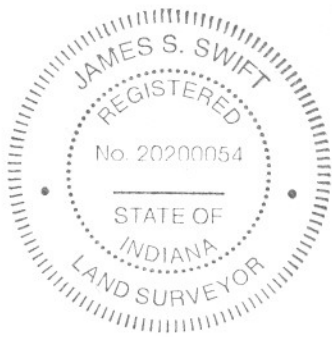
CORNER WITNESS DETAIL

SCALE 1" = 30'



- A - Mag nail set, N.E. side, power pole, 1.5' a.g., 12.55'
 - B - Top, center of 22 inch x 22 inch granite stone, top at 20 inches above grade, 18.43'
 - C - Survey control mark, flush 32.43'
 - D - Mag nail set, N.W. side, power pole, 1.5' a.g., 55.42'
- Survey control mark is a 3/8" diameter x 2' long rebar bearing a red plastic cap stamped "Control Point."

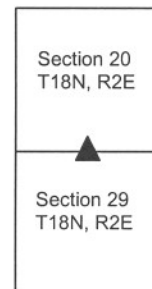
The Harrison monument was set over the top center of a stone found and accepted as marking the corner. The stone matches the description in a previous BCS record dated November 23 - 25, 1865: "Re-established from Beech found old stake also. Set Rock 22.18 by 12. + on N. side and mark across top. Hickory stake under it." The "+" is clearly visible on the north side and the stone is 12 inches (N-S) by 18 inches (E-W). The stone was not excavated to the full 22 inch depth, nor was the hickory stake excavated, in order to preserve the stable position of the stone. The top of the stone is approximately 20 inches below grade. A 2 foot long piece of 24 inch diameter plastic tile was set over and around the stone. This tile was filled with gravel, except for a 10 inch by 18 inch column of concrete in which the Harrison monument was set. The top 3 inches of the interior of the tile was filled with concrete. A 5/8 inch rebar which has been held on the corner by some previous surveys was found 2.52 feet N and 0.28 feet W of the top, center of the stone. The rebar was removed during excavation. This corner was originally established in July, 1821.



Kenneth E. Hedge
 Kenneth E. Hedge, County Surveyor

James S. Swift
 James S. Swift, IN LS 20200054
 January 30, 2008

Worth Township



PHOTOGRAPHIC DOCUMENTATION

Date of photography: 11/28/2007

View of stone from above and slightly west of north. The etched "+" is visible on the north side of the stone. The top of the stone is approximately 20 inches below grade and matches the record description of 22 by 18 by 12, + on the north side.



Same picture as above, with etched "+" enhanced for ease of visual detection.



View of stone from above after 2-foot diameter plastic tile was placed around it. Photo is oriented with the flat, north side towards the bottom of the page. The Harrison monument was set over the midpoint of the top of the stone, south of the etched "+".



SECTION CORNER RECORD

SE 400-800

BOONE COUNTY SURVEYOR'S OFFICE

State Plane grid coordinates NAD83 (NSRS 2007):

North: 1725475.91 East: 3167346.25 (U.S. survey feet)

Type of monument: Harrison, 4" disk 'Section Corner'

Depth: One inch below road surface

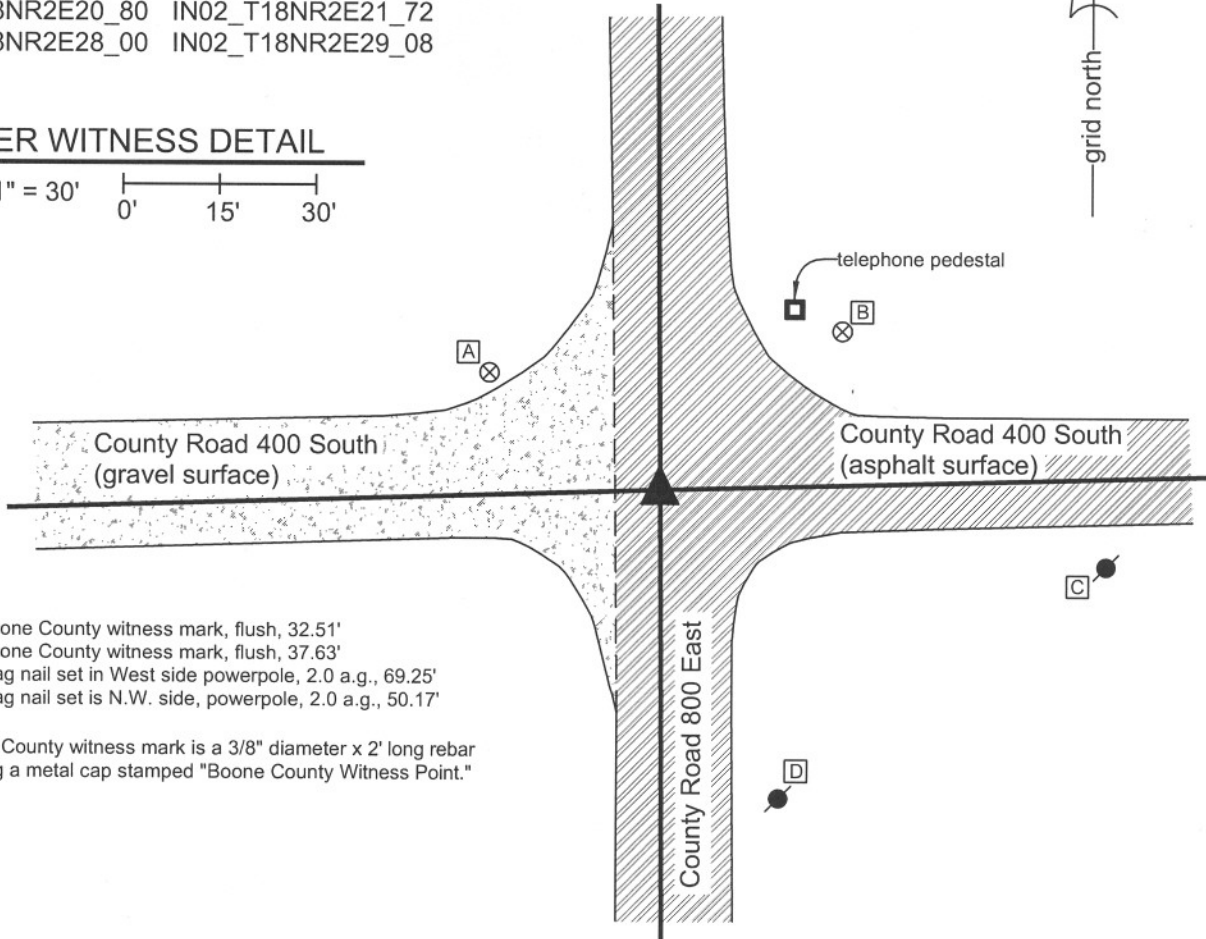
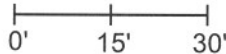
Indiana tie card references:

IN02_T18NR2E20_80 IN02_T18NR2E21_72

IN02_T18NR2E28_00 IN02_T18NR2E29_08

CORNER WITNESS DETAIL

SCALE 1" = 30'



- A - Boone County witness mark, flush, 32.51'
- B - Boone County witness mark, flush, 37.63'
- C - Mag nail set in West side powerpole, 2.0 a.g., 69.25'
- D - Mag nail set is N.W. side, powerpole, 2.0 a.g., 50.17'

Boone County witness mark is a 3/8" diameter x 2' long rebar bearing a metal cap stamped "Boone County Witness Point."

The Harrison monument was set directly over the top of a stone found and accepted as marking the corner. The stone was exposed and the Harrison monument set on November 13, 2007. The stone matches the description from a BCS record of November 23 - 25, 1865: "Re-established from trees and old stake. Set rock 24.14 by 4 marked + on W. side and four small rocks around it." The top of the stone is 27 inches deep, firmly established in the clay sub-base and the "+" on the west side is clearly visible. A smaller stone was found at 12 inches deep, directly above the record stone. The smaller stone was within the gravel layer of the road and appears to have been set as a witness to the deeper, record stone. A railroad rail set on end was found 1.7' North and 1.8' East of the stone. A BCS tie card dated April 15, 1968 states "no stone found" and demonstrates a location for the corner but does not state what monument was set. It is likely that the railroad rail was set at this time. The rail has been held as the corner for surveys subsequent to 1968 but is clearly not the best evidence of the location of the original corner. The rail and the small witness stone were removed during excavation and the record stone was left in place. This corner was originally established in July, 1821.



Kenneth E. Hedge
 Kenneth E. Hedge, County Surveyor

J. S. Swift
 James S. Swift, IN LS 20200054
 January 2, 2008

Worth Township	Eagle Township
Section 20 T18N, R2E	Section 21 T18N, R2E
Section 29 T18N, R2E	Section 28 T18N, R2E

PHOTOGRAPHIC DOCUMENTATION

Date of photography: 11/13/2007

Photograph of record stone, set 11/23-11/25, 1865. Photo is taken from above, slightly to West.



Close-up of record stone, taken from above, showing west side of the top of the stone. The etched "+" is clearly visible on the west side, centered at 4 inches from top of stone. The stone was exposed to 9 inches below the top, at which point it was approximately 8 inches wide by 4 inches thick and completely stable in position. One of the "four small rocks around it" was found on the east side. The other surrounding rocks were not exposed. The stone was not further exposed in order to preserve the stability of its position.



Photograph taken from Northeast, showing area of excavation as it is being re-filled with gravel. The main hole is 4 feet by 4 feet centered on the railroad rail (see notes, other sheet). Record stone was found in bottom of the offset square in the S.W. corner of the main hole. The small witness stone found above the record stone is shown along with several small rocks on pavement at the top right corner of the photograph.



Record stone at bottom of hole