

SECTION CORNER RECORD

SW 300-450

BOONE COUNTY SURVEYOR'S OFFICE

State Plane grid coordinates NAD83 (2011):

North: 1729502.13 East: 3101018.36 (U.S. survey feet)

Type of monument: Harrison, 4" disk 'Section Corner'

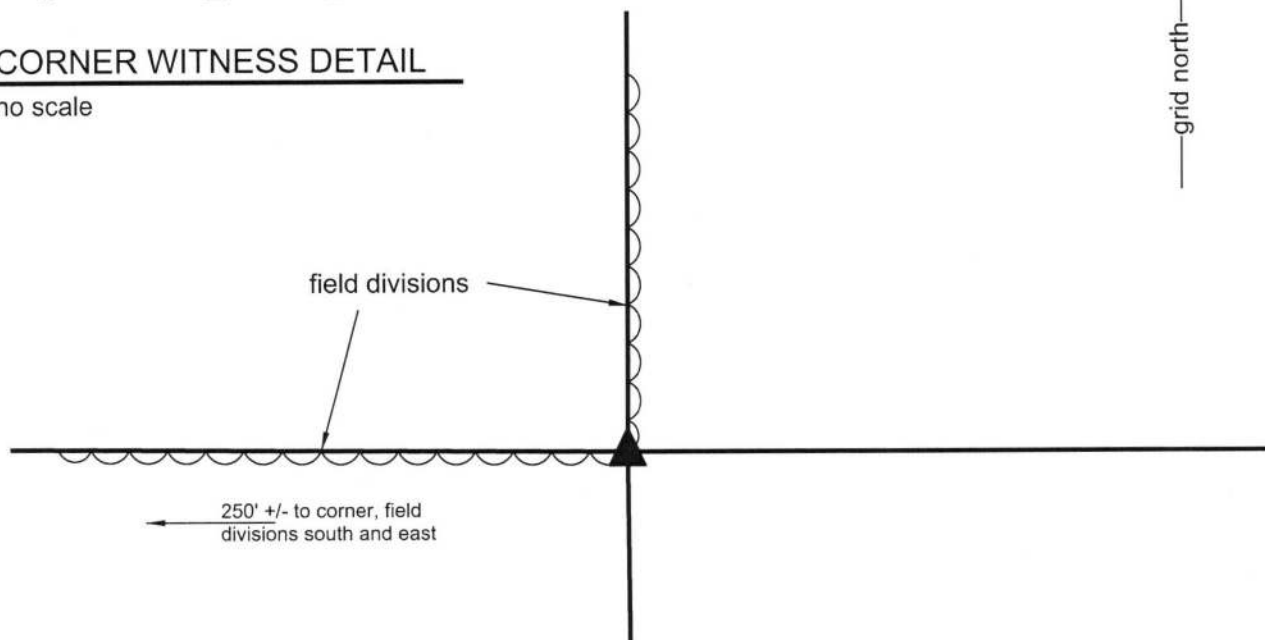
Depth: Flush with adjacent ground

Indiana tie card references:

IN02_T18NR1W17_76 IN02_T18NR1W20_04

CORNER WITNESS DETAIL

no scale



The Harrison monument was set in place of a rebar found.

A BCS record dated October 3-4, 1883 states, with respect to this corner, "Reestablished by measurement. Rock 12,10,8 no mark."

No recent BCS tie cards were found referencing this corner.

The Harrison monument was set at this corner on October 16, 2017. During reconnaissance at this corner in April, 2016, the situation was significantly different than in October, 2017. In 2016, fencing was found to the west and north of the corner but no specific corner post was observed. The fences to the north and west were substantially overgrown with trees, and substantial debris and growth was found in the immediate vicinity of the corner. No specific monuments were found at that time, though due to the overgrowth, the rebar may have been present yet not observed. A position for the corner was computed with respect to the standing fences to the north and west, with approximately one foot of uncertainty.

On October 16, 2017, it was observed that the fencing and trees had been removed, both at the corner and to the north and west, but field divisions remained to the north and west. A steel t-post within a white PVC pipe was situated at the intersection of the field divisions and the 5/8 inch rebar was found at the base of the post. The rebar was found to be 1.0 foot south and 0.5 foot east of the previously calculated position for the corner. Probing in the vicinity yielded no stone found. It was readily evident that the area had been substantially disturbed since April, 2016. Excavation around the rebar yielded fragments of cedar wood at approximately 18 inches deep which appeared to be remnants of an old post. The cedar was found adjacent to the rebar, slightly northwest. Given the above observations, it is considered most likely that the rebar had been set at the southeast edge of the corner post which once stood at the intersection of the old fences, but was not standing in 2016. The rebar was held as marking the corner and was replaced with a Harrison monument in the same position. The steel t-post and PVC pipe were removed during excavation, but reset adjacent to the monument on the south side.

This corner was originally established as a wood post in 1820.




Kenneth E. Hedge, County Surveyor


James S. Swift, IN LS 20200054
October 17, 2017

Center Twp
(E 1/2 S. 17)

Jackson Twp
(W 1/2 S. 17 +
All of S. 20)

Section 17
T18N, R1W

Section 20
T18N, R1W

SECTION CORNER RECORD

SW 350-450

BOONE COUNTY SURVEYOR'S OFFICE

State Plane grid coordinates NAD83 (2011):

North: 1726882.25 East: 3101049.99 (U.S. survey feet)

Type of monument: Harrison, 4" disk 'Section Corner'

Depth: Six inches below adjacent gravel road surface

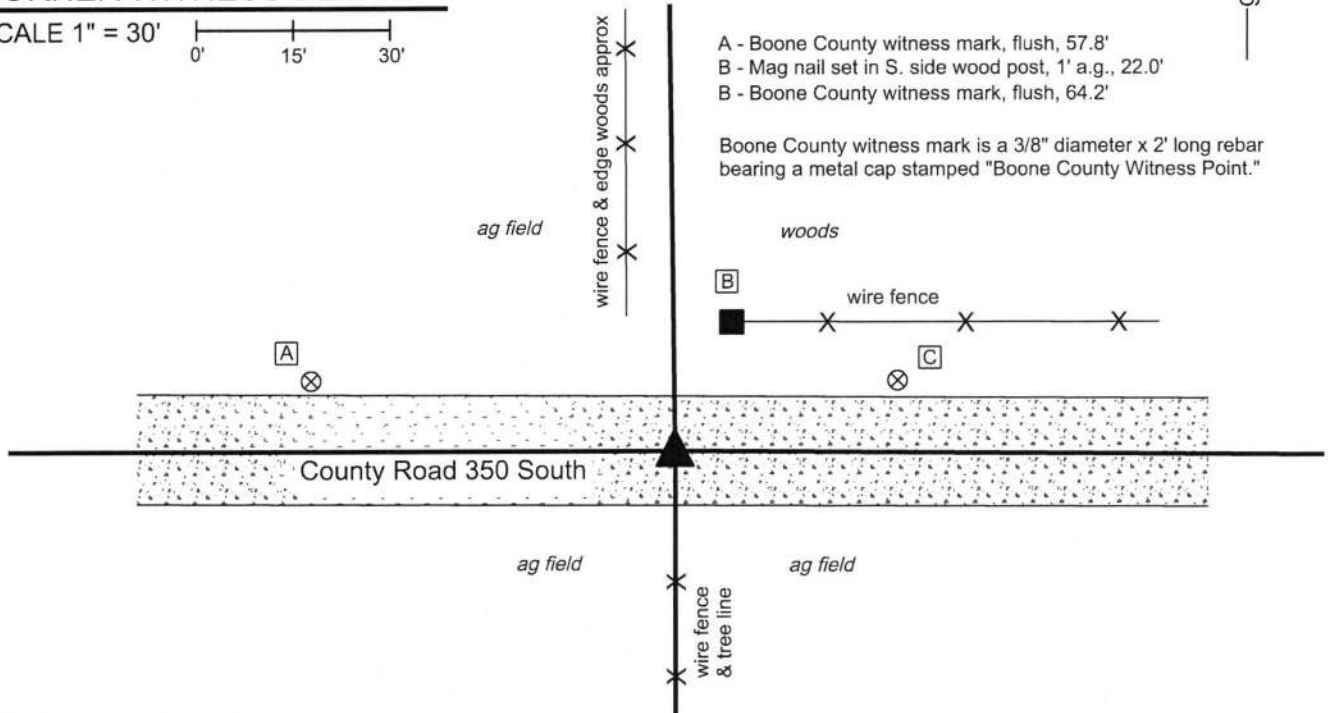
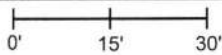
Indiana tie card references:

IN02_T18NR1W20_40



CORNER WITNESS DETAIL

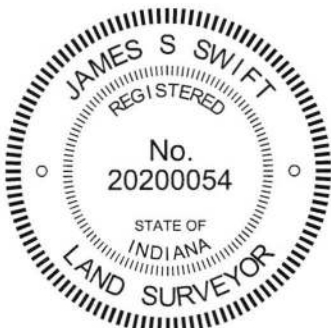
SCALE 1" = 30'



The Harrison monument was set over a stone found.

A BCS record of June 19, 1838 shows this corner referenced to a 12 inch diameter sugar tree (maple) at S81°E, 13 links and a 10 inch diameter beech tree at S53°W, 40 links. A BCS record of January 5, 1874 states "Reestablished from Beech after boxing. Set Rock 12.10.8 +." The term 'boxing' is interpreted to mean that the tree was cut into and the markings carved into the tree in 1838 were exposed. This corner is not an original corner of Public Land Survey System, established by federal surveyors. The county records clearly indicate that the original establishment of the corner occurred in 1838. As the Boone County Surveyor set the corner at that time and a successor to the office reestablished the same position from reliable evidence, the position of the corner is held as monumented in 1874.

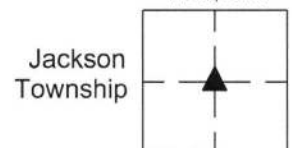
Excavation of the corner occurred on December 21, 2017. Prior to excavation, no metal or other artificial monuments were found ostensibly marking the corner. Excavation revealed a stone found at at 14 inches deep in the approximate center of the east-west road, in line with an existing fence and tree line to the south. With the top 8 inches of the stone exposed, it measured 10 inches E-W by 8 inches N-S. The stone appeared to vertical. The full height of the stone was not exposed or measured. The west side of the stone is flat and vertical. No specific marks were observed on the stone. The stone was accepted as being the same monument described in the 1874 record and was held as marking the corner. The top 8 inches of the stone were encased in concrete and a Harrison monument was set directly over the top, high point of the stone.



Kenneth E. Hedge, County Surveyor

James S. Swift, IN LS 20200054
February 6, 2018

Section 20
T18N, R1W



SECTION CORNER RECORD

BOONE COUNTY SURVEYOR'S OFFICE

SW 400-400

State Plane grid coordinates NAD83 (2011):

North: 1724229.66 East: 3103688.18 (U.S. survey feet)

Type of monument: Harrison, 4" disk 'Section Corner'

Depth: Six inches below adjacent gravel road surface

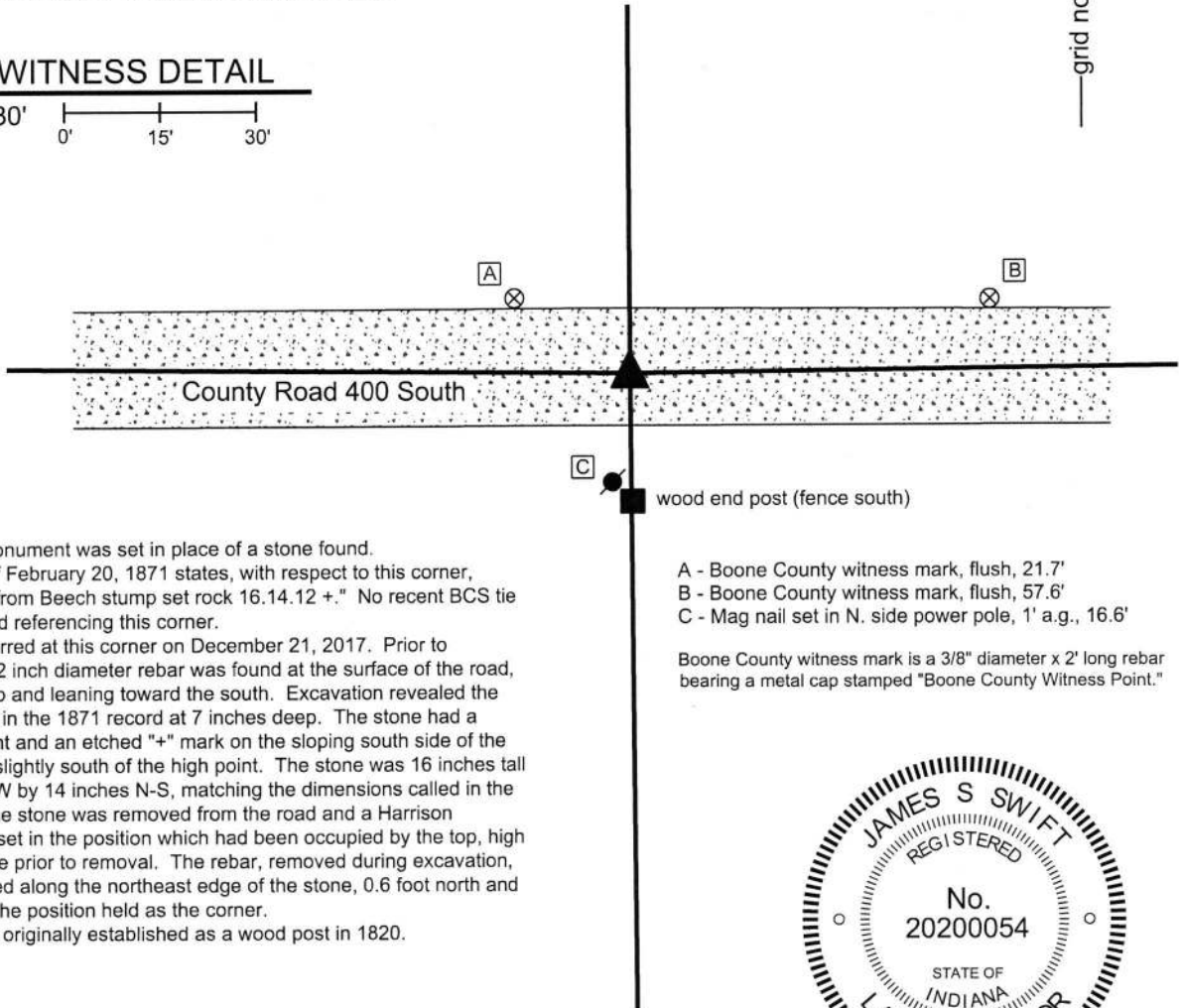
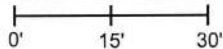
Indiana tie card references:

IN02_T18NR1W20_80 IN02_T18NR1W21_72

IN02_T18NR1W29_08 IN02_T18NR1W28_00

CORNER WITNESS DETAIL

SCALE 1" = 30'



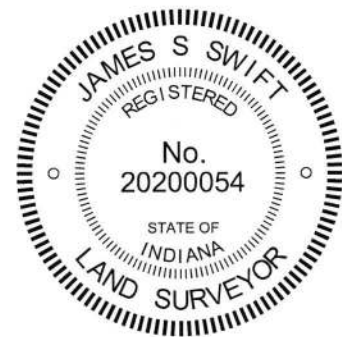
The Harrison monument was set in place of a stone found. A BCS record of February 20, 1871 states, with respect to this corner, "Reestablished from Beech stump set rock 16.14.12 +." No recent BCS tie cards were found referencing this corner.

Excavation occurred at this corner on December 21, 2017. Prior to excavation, a 1/2 inch diameter rebar was found at the surface of the road, bent near the top and leaning toward the south. Excavation revealed the stone described in the 1871 record at 7 inches deep. The stone had a distinct high point and an etched "+" mark on the sloping south side of the top of the rock, slightly south of the high point. The stone was 16 inches tall by 12 inches E-W by 14 inches N-S, matching the dimensions called in the 1871 record. The stone was removed from the road and a Harrison monument was set in the position which had been occupied by the top, high point of the stone prior to removal. The rebar, removed during excavation, had been situated along the northeast edge of the stone, 0.6 foot north and 0.3 foot east of the position held as the corner.

This corner was originally established as a wood post in 1820.

- A - Boone County witness mark, flush, 21.7'
- B - Boone County witness mark, flush, 57.6'
- C - Mag nail set in N. side power pole, 1' a.g., 16.6'

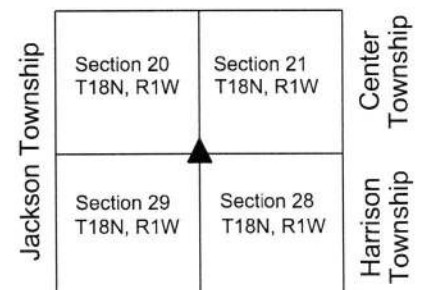
Boone County witness mark is a 3/8" diameter x 2' long rebar bearing a metal cap stamped "Boone County Witness Point."



Kenneth E. Hedge
Kenneth E. Hedge, County Surveyor

James S. Swift
James S. Swift, IN LS 20200054

February 6, 2018



SECTION CORNER RECORD

BOONE COUNTY SURVEYOR'S OFFICE

SW 400-450

State Plane grid coordinates NAD83 (2011):
North: 1724253.75 East: 3101052.40 (U.S. survey feet)

Type of monument: Harrison, 4" disk 'Section Corner'
Depth: Six inches below adjacent gravel road surface

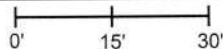
Indiana tie card references:

IN02_T18NR1W20_76
IN02_T18NR1W29_04



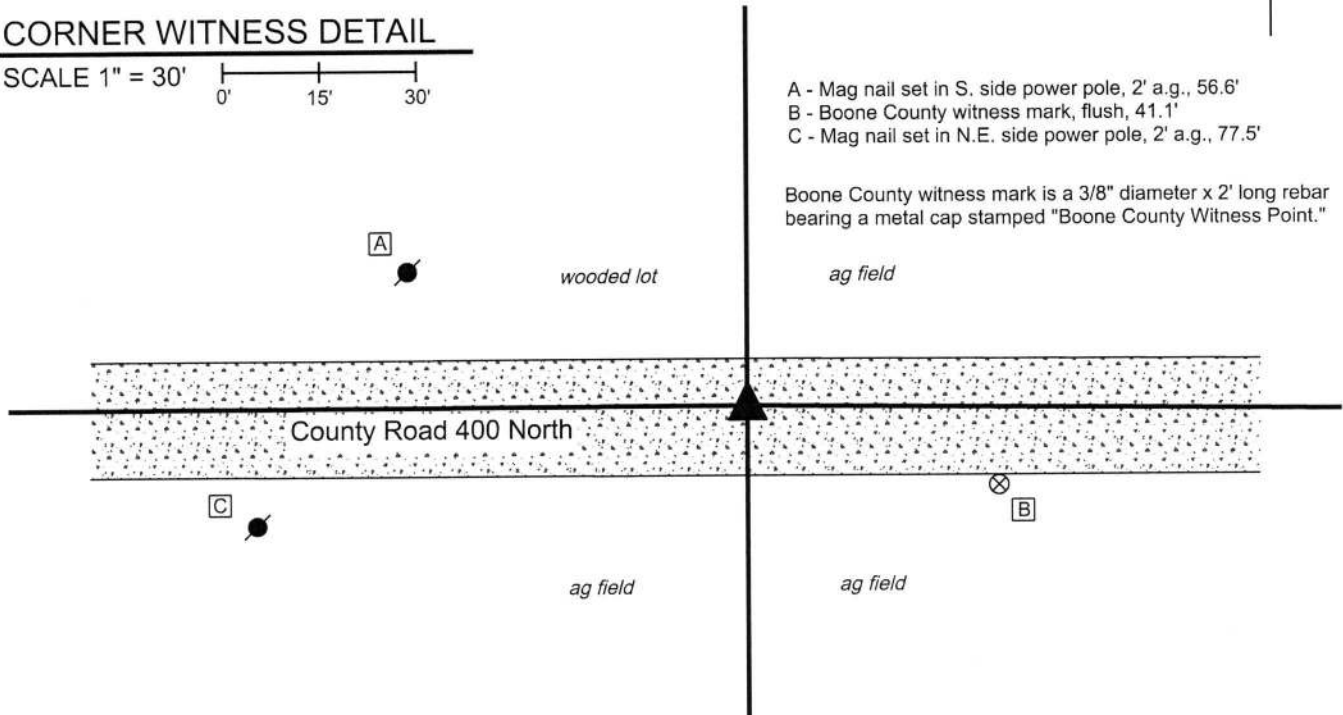
CORNER WITNESS DETAIL

SCALE 1" = 30'

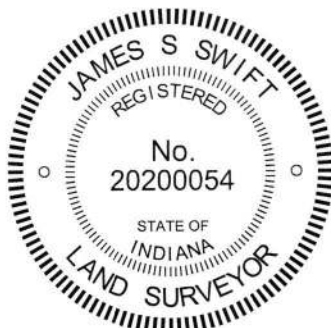


- A - Mag nail set in S. side power pole, 2' a.g., 56.6'
- B - Boone County witness mark, flush, 41.1'
- C - Mag nail set in N.E. side power pole, 2' a.g., 77.5'

Boone County witness mark is a 3/8" diameter x 2' long rebar bearing a metal cap stamped "Boone County Witness Point."



The Harrison monument was set in place of a stone found. A BCS record of October 9, 1912 states, with respect to this corner, "Reestd from stumps of both trees. Set Rock 16x8x7 +." No recent BCS tie cards were found marking this corner. Excavation occurred at this corner on December 20, 2017. Prior to excavation, a railroad spike was found approximately 3 inches deep in the road. No documentation was found indicating the origin of the spike. Excavation revealed the stone described in the 1912 record at 7 inches deep. As found, the stone appeared to be leaning toward the south. The stone was removed, measured and found to match the dimensions called in the 1912 record. An etched "+" mark was found on what would have been the south side of the stone, as found, but was likely the top of the stone as originally placed. Although the stone appeared to be leaning, the base of the stone was well embedded in the clay layer below the road bed and the overall rock did not appear to have been disturbed from its original position, except for the lean to the south. The stone was held as marking the corner and a Harrison monument was set in place of the base of the stone, as found embedded below the road bed. The railroad spike, removed during excavation, had been 1.6 feet north and 1.3 feet east of the position held as the corner. This corner was originally established as a wood post in 1819.



Kenneth E. Hedge
Kenneth E. Hedge, County Surveyor

James S. Swift
James S. Swift, IN LS 20200054
February 6, 2018

Jackson Township

