

SECTION CORNER RECORD

NW 200-500

BOONE COUNTY SURVEYOR'S OFFICE

State Plane grid coordinates NAD83 (2011):

North: 1756092.46 East: 3098338.74 (U.S. survey feet)

Type of monument: Harrison, 4" disk 'Section Corner'

Depth: flush with adjacent road surface

Indiana tie card references:

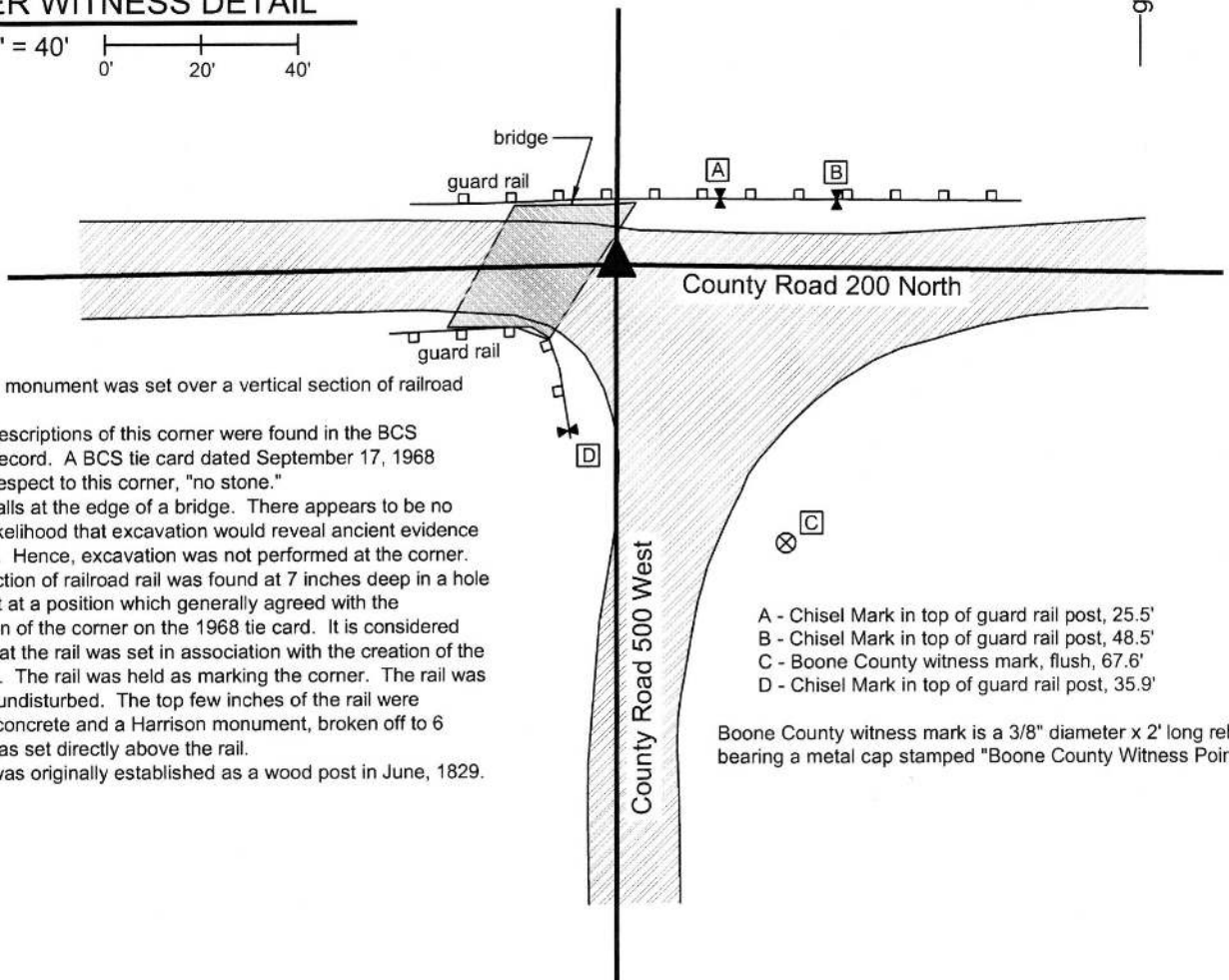
IN02_T19NR1W19_80 IN02_T19NR1W20_72

IN02_T19NR1W30_08 IN02_T19NR1W30_00



CORNER WITNESS DETAIL

SCALE 1" = 40'



The Harrison monument was set over a vertical section of railroad rail found.
No specific descriptions of this corner were found in the BCS Surveyor's Record. A BCS tie card dated September 17, 1968 states, with respect to this corner, "no stone."
This corner falls at the edge of a bridge. There appears to be no substantial likelihood that excavation would reveal ancient evidence of the corner. Hence, excavation was not performed at the corner. A vertical section of railroad rail was found at 7 inches deep in a hole in the asphalt at a position which generally agreed with the representation of the corner on the 1968 tie card. It is considered most likely that the rail was set in association with the creation of the 1968 tie card. The rail was held as marking the corner. The rail was left in place, undisturbed. The top few inches of the rail were anchored in concrete and a Harrison monument, broken off to 6 inches tall, was set directly above the rail.
This corner was originally established as a wood post in June, 1829.

- A - Chisel Mark in top of guard rail post, 25.5'
- B - Chisel Mark in top of guard rail post, 48.5'
- C - Boone County witness mark, flush, 67.6'
- D - Chisel Mark in top of guard rail post, 35.9'

Boone County witness mark is a 3/8" diameter x 2' long rebar bearing a metal cap stamped "Boone County Witness Point."



Kenneth E. Hedge
Kenneth E. Hedge, County Surveyor

James S. Swift
James S. Swift, IN LS 20200054
March 24, 2016

Jefferson Township

Section 19 T19N, R1W	Section 20 T19N, R1W
Section 30 T19N, R1W	Section 29 T19N, R1W

SECTION CORNER RECORD

NW 200-550

BOONE COUNTY SURVEYOR'S OFFICE

State Plane grid coordinates NAD83 (2011):
North: 1756047.96 East: 3095692.59 (U.S. survey feet)

Type of monument: Harrison, 4" disk 'Section Corner'
Depth: One inch below adjacent road surface

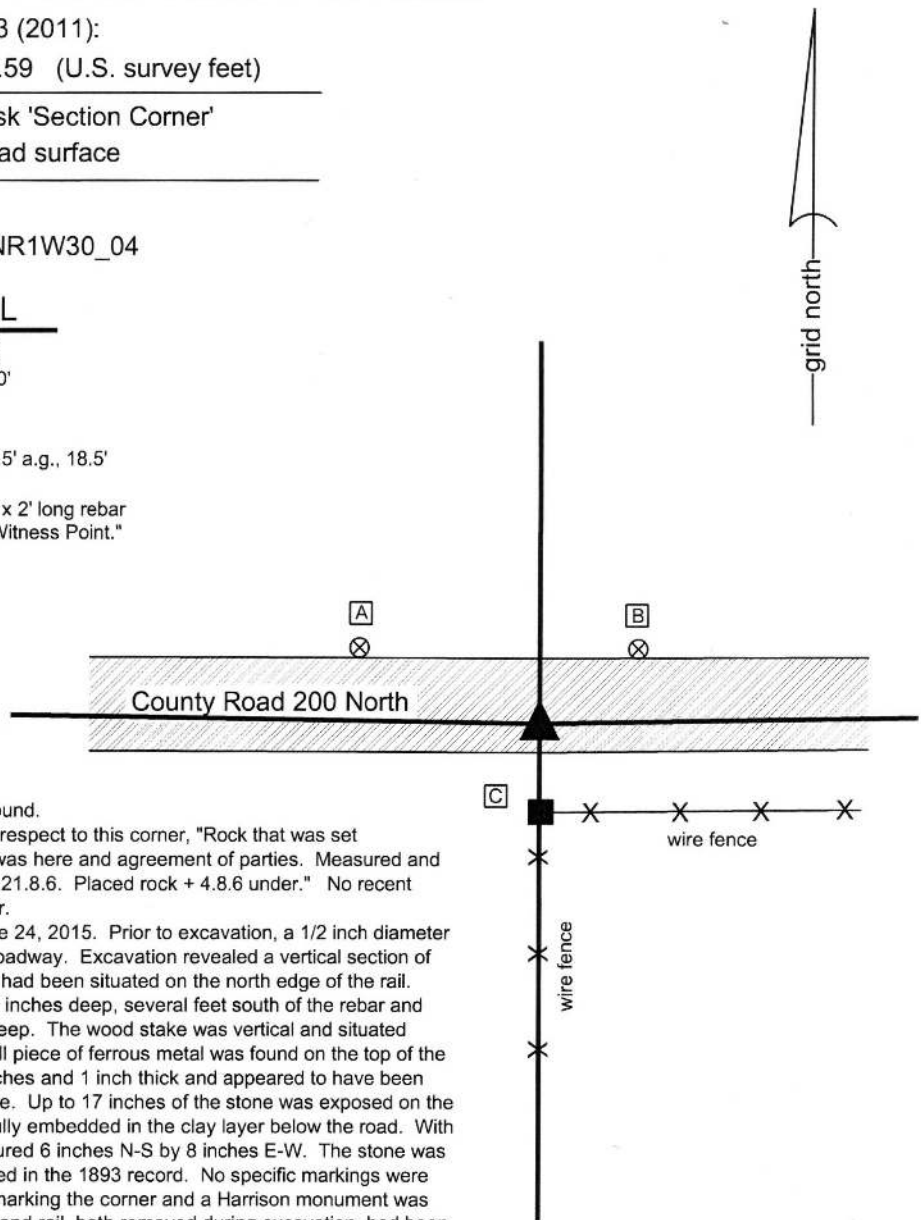
Indiana tie card references:
IN02_T19NR1W19_76 IN02_T19NR1W30_04

CORNER WITNESS DETAIL

SCALE 1" = 40'
0' 20' 40'

- A - Boone County witness mark, flush, 40.6'
- B - Boone County witness mark, flush, 25.6'
- C - Mag nail set in N. side wood corner post, 2.5' a.g., 18.5'

Boone County witness mark is a 3/8" diameter x 2' long rebar bearing a metal cap stamped "Boone County Witness Point."



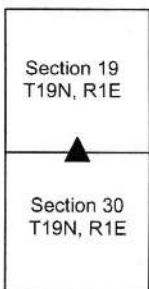
The Harrison monument was set over a stone found.
A BCS record dated March 8, 1893 states, with respect to this corner, "Rock that was set recognized from recollection from time witness was here and agreement of parties. Measured and marked + same & sunk to level of ground. Size 21.8.6. Placed rock + 4.8.6 under." No recent BCS tie cards were found referencing this corner.
Excavation was performed at this corner on June 24, 2015. Prior to excavation, a 1/2 inch diameter rebar was found at 4 inches below the asphalt roadway. Excavation revealed a vertical section of railroad rail found at 14 inches deep. The rebar had been situated on the north edge of the rail. Further excavation revealed a stone found at 15 inches deep, several feet south of the rebar and rail. A wood stake was also found at 7 inches deep. The wood stake was vertical and situated against the east edge of the stone. Also, a small piece of ferrous metal was found on the top of the stone. The piece of iron was 5 inches by 2.5 inches and 1 inch thick and appeared to have been set to bring attention to the presence of the stone. Up to 17 inches of the stone was exposed on the north side. The stone was clearly vertical and fully embedded in the clay layer below the road. With 10 inches exposed on all sides, the stone measured 6 inches N-S by 8 inches E-W. The stone was accepted as being the same monument described in the 1893 record. No specific markings were detected on the stone. The stone was held as marking the corner and a Harrison monument was set over the top, center of the stone. The rebar and rail, both removed during excavation, had been 0.5 foot west and 3.3 feet north (rebar) and 3.2 feet north (rail), respectively, of the top, center of the stone.
It is noted that this corner is approximately 43 feet south of a straight line between the section corners to the east and west. No explanation is offered for this substantial variation from a straight line. The E-W roadway also contains a significant bend at this point and the stone appeared to be the monument as called for in the 1893 record.
This corner was originally established as a wood post in 1829.



Kenneth E. Hedge
Kenneth E. Hedge, County Surveyor

James S. Swift
James S. Swift, IN LS 20200054
March 24, 2016

Jefferson Township



PHOTOGRAPHIC DOCUMENTATION

Date of photography: June 24, 2015

The stone as it was originally exposed with the wood stake found along the east side of the stone.



The stone as it was originally exposed with the wood stake found along the east side of the stone.



The stone from above and northwest



View from the north looking across the stone and south to the wood post on the south side of County Road 200 North.



The stone fully exposed, view from above.



For details and documentation, refer to related sheet "Section Corner Record."

SECTION CORNER RECORD

NW 200-600

BOONE COUNTY SURVEYOR'S OFFICE

State Plane grid coordinates NAD83 (2011): (U.S. survey feet)

Corner 1: North: 1756136.60 East: 3093113.15

Corner 2: North: 1756089.97 East: 3093113.17

Type of monument: Harrison, 4" disk 'Section Corner'

Depth: One inch below adjacent road surface

Indiana tie card references:

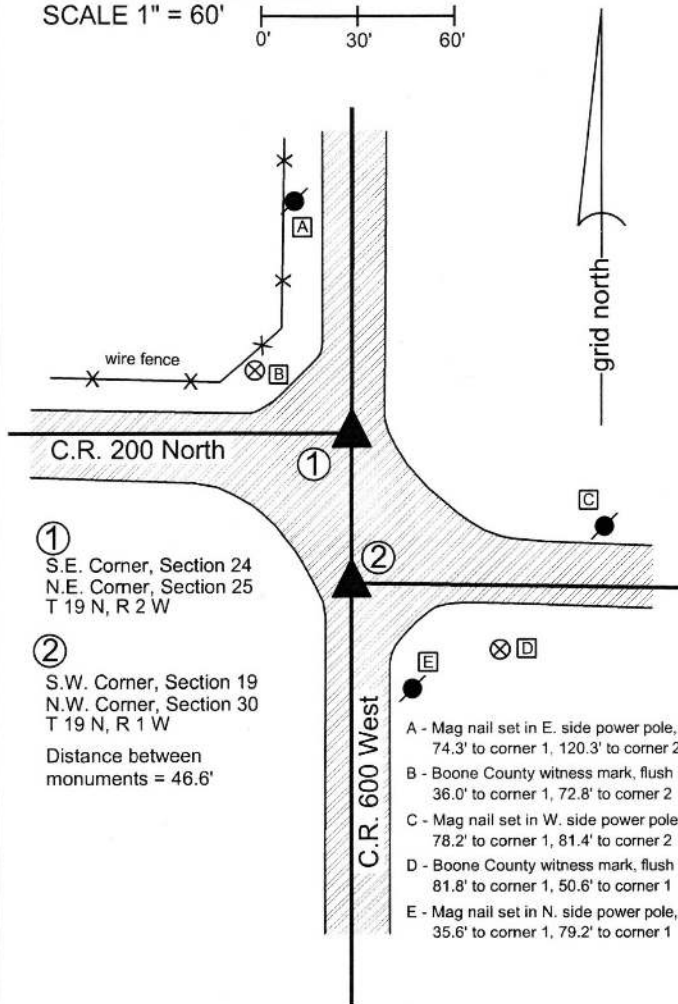
IN02_T19NR2W24_80 IN02_T19NR1W19_72

IN02_T19NR2W25_08 IN02_T19NR1W30_00

CORNER WITNESS DETAIL

SCALE 1" = 60'

0' 30' 60'



The Harrison monument at corner 1 was set over a stone found. The Harrison monument at corner 2 was set on the range line adjacent to a stone found.

A BCS record dated December 31, 1872 states, with respect to corner 1, Reestablished N.E. corner, set rock 16,12.8 +. One under it 6 1/2, 5 1/2, 4 +."

An undated BCS tie card, believed to date from June, 1974, states, with respect to corner 1, "No stone located."

A BCS record dated November 30, 1878, states, with respect to corner 2, "Reest'd 71 links S. of the lap corner. Set two limestones 12x11x3, lower, lies on side, + on top side. (Top) 18x8x4 on end + on top and a smaller one on each side. + on sides."

A BCS tie card dated June 1974 states, with respect to corner 2, "No stone."

Both corners were excavated on June 23, 2015. Prior to excavation, a railroad spike had been found in the vicinity of corner 1 and a vertical section of railroad rail had been found in the vicinity of corner 2. These two monuments were located at 43.8 feet apart. The record closing distance, originally recorded in 1829 and reaffirmed in 1878, of 71 links equates to approximately 46.9 feet.

Excavation at corner 1 revealed a railroad rail found directly below the railroad spike. Further excavation revealed a stone found at 22 inches deep. With 10 inches of the stone exposed, it measured 11.5 inches N-S by 8 inches E-W. The stone was embedded in the clay layer below the road, appeared to be vertical, and remained stable with the top 11 inches exposed. The stone had a distinct N-S ridge across the top with a discernable high point. No specific markings were observed on the stone, though it is a rough-surfaced rock and marks are hard to distinguish on such a stone. The top, high point of the stone was held as marking the corner and a Harrison monument was set at this point. The railroad spike and railroad rail, both removed during excavation, had been 0.2 foot south and 0.8 foot east of the point held as the corner.

Excavation at corner 2 revealed several stones found. The top stone was found at 22 inches deep. This stone appeared to be of limestone material and appeared to be leaning slightly toward the north. Stood vertically, the stone had a distinct etched "+" mark on the top. As stood vertically, the stone measured 18 inches tall by 8 inches N-S by 4 inches E-W. Two smaller rocks were found on the east and west sides, respectively, of the larger rock. All three stones were removed and another stone was found at 40 inches deep. This stone appeared to be horizontal and had a distinct etched "+" mark on the top of the flat rock. This set of four stones was accepted as being the same set of stones called for in the 1878 record. The etched mark on the lower stone was found to be 46.6 feet south of the top, center of the stone at corner 1 and approximately 0.4 foot west of the range line as defined by the positions of corner 1 and the standard corner approximately 1/2 mile south. Corner 2 was established on the range line at the same north-south dimension as the etched "+" mark on the lower stone. A Harrison monument was set at this position. The railroad rail, removed during excavation, had been 1.5 feet east and 2.6 feet north of the final position for corner 2. An iron pipe was also found 1 foot south of the rail. This monument was also removed during excavation. Corner 1 was originally established as a wood post in 1819 and corner 2 was originally established as a wood post in 1829.



Kenneth E. Hedge
Kenneth E. Hedge, County Surveyor

James S. Swift
James S. Swift, IN LS 20200054
March 24, 2016

Jefferson Township

Section 24 T19N, R2W	Section 19 T19N, R1W
Section 25 T19N, R2W	Section 30 T19N, R1W

PHOTOGRAPHIC DOCUMENTATION

Date of photography: June 23, 2015

The stone at the standard corner (Corner 1) as it was originally exposed.



The first stone found at the closing corner (Corner 2). Note the mark on top.



The situation at the closing corner. Three stones removed, the bottom stone left in place.



View of the standard corner.
View from the East, looking across the stone and west along County Road 200 South.



Another view of the standard corner, including the removed stone and the found iron pipe.



For details and documentation, refer to related sheet "Section Corner Record."

SECTION CORNER RECORD

NW 250-500

BOONE COUNTY SURVEYOR'S OFFICE

State Plane grid coordinates NAD83 (2011):

North: 1758736.08 East: 3098365.29 (U.S. survey feet)

Type of monument: Harrison, 4" disk 'Section Corner'

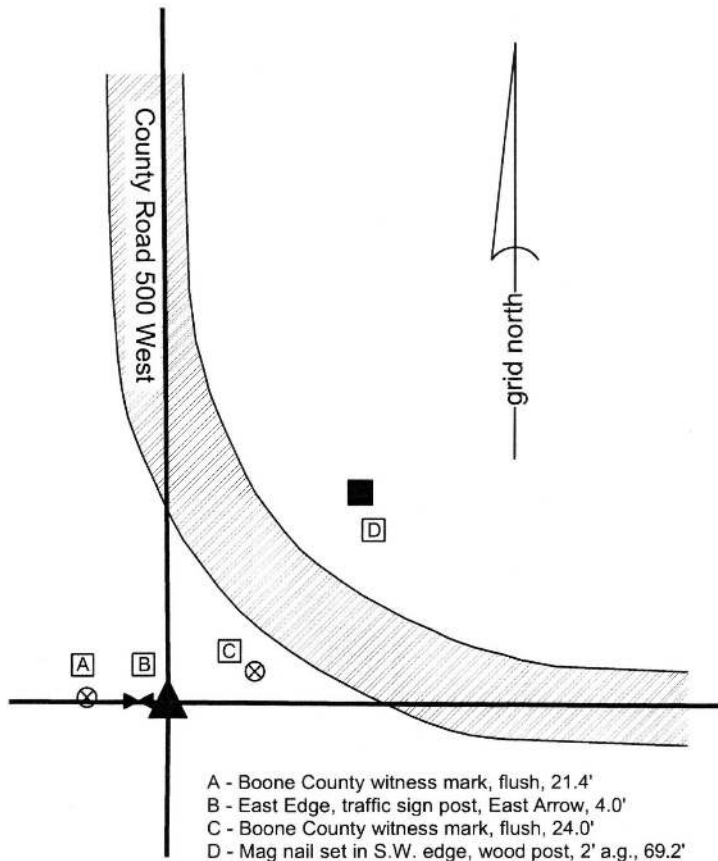
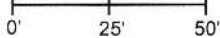
Depth: Flush with adjacent ground

Indiana tie card references:

IN02_T19NR1W19_44 IN02_T19NR1W20_36

CORNER WITNESS DETAIL

SCALE 1" = 50'



- A - Boone County witness mark, flush, 21.4'
- B - East Edge, traffic sign post, East Arrow, 4.0'
- C - Boone County witness mark, flush, 24.0'
- D - Mag nail set in S.W. edge, wood post, 2' a.g., 69.2'

Boone County witness mark is a 3/8" diameter x 2' long rebar bearing a metal cap stamped "Boone County Witness Point."

The Harrison monument was set in place of a rebar found. No specific descriptions of this corner were found in the BCS Surveyor's Record, though the corner is mentioned as the terminal point for measurements in records of 1839 and 1893. A BCS tie card dated September 17, 1968 shows the corner as a "stone located." This document contains a drawing which graphically demonstrates the corner to be at the center of a 90° degree bend in the roadway. The corner is clearly represented as being within the physical roadway. The actual situation is that the corner is west of the roadway. Though the road does achieve a 90° bend, the roadway itself does not extend as far west as the corner. The current position of the road appears to be substantially similar to the position of the road as shown on aerial photos as early as 1939. It is evident, though, that the current roadway has been built up in elevation relative to the surrounding ground to the west. This is noted, because the 1968 tie card call for "stone located" indicates that a stone should be present or perhaps a vertical section of railroad rail. It is known that BCS field crews from the late 1960s and early 1970s followed a common practice of removing a stone, if found, and replacing it with a railroad rail. Neither a stone nor a railroad rail were found at the corner. In some cases, these crews appear to have replaced the stone with a rebar, rather than a rail, but this practice was not common until the mid-1970s.

No reference ties are known to exist from the 1968 tie card. One power pole to the west may be the same as is shown the the card but it is not clear that this is the same pole and the graphical representation of the corner of the tie card shows the power pole to be southwest of the corner.

A rebar was found at a probable location for the corner. The rebar was flush with the surface of the dirt but appeared to be leaning towards the northwest. Extensive probing and minor excavation revealed no other evidence at the corner. Local evidence of the corner does exist in the form of County Road 500 West to the north of the corner and an existing fence to the west. Establishing a theoretical position for the corner based on prolonging the line defined by the fence toward the east and prolonging the line defined by the center of the road to the south would place the corner approximately 2 feet north of the rebar. Establishing a theoretical position for the corner based on adjoining deed descriptions to the south and monumentation found marking corners of the described parcels places the corner slightly north, but within one-half foot, of the rebar as found, and as stood vertical. Excavation around the rebar revealed substantial rust in the dirt adjacent to the monument which indicates that the monument had been present in that position for a long period of time.

Given the lack of contrary evidence, the harmony of the position of the rebar with adjacent deed descriptions and monumentation, and the evident long duration of time in which the rebar was at this position, the rebar was held as the best available evidence of the corner. It is also noted that the rebar, as stood vertically, fit within 0.5 foot of the power pole which may, or may not, have been a reference tie on the 1968 tie card. The rebar was removed and replaced with a Harrison monument in the same position. The actual position of the monument is coincident with the position of the bottom of the rebar as originally found, given that the rebar appeared to be leaning slightly northwest. Two possible explanations are offered for the fact that neither a stone nor a rail were found at the corners. The first is that the BCS crews may have set the rebar, though the more common practice at the time was to set a railroad rail. The other possible explanation is that the adjacent road bed was improved and built up on fill material some time after 1968, which earth-moving activity would have likely disturbed the position of the corner and any monument which may have existed there at the time.

This corner was originally established as a wood post in 1829.



Kenneth E. Hedge
 Kenneth E. Hedge, County Surveyor

James S. Swift
 James S. Swift, IN LS 20200054
 March 24, 2016

Jefferson Township

Section 19 T19N, R1W	Section 20 T19N, R1W
-------------------------	-------------------------

SECTION CORNER RECORD

NW 300-500

BOONE COUNTY SURVEYOR'S OFFICE

State Plane grid coordinates NAD83 (2011):

North: 1761383.99 East: 3098337.82 (U.S. survey feet)

Type of monument: Harrison, 4" disk 'Section Corner'

Depth: One inch below adjacent road surface

Indiana tie card references:

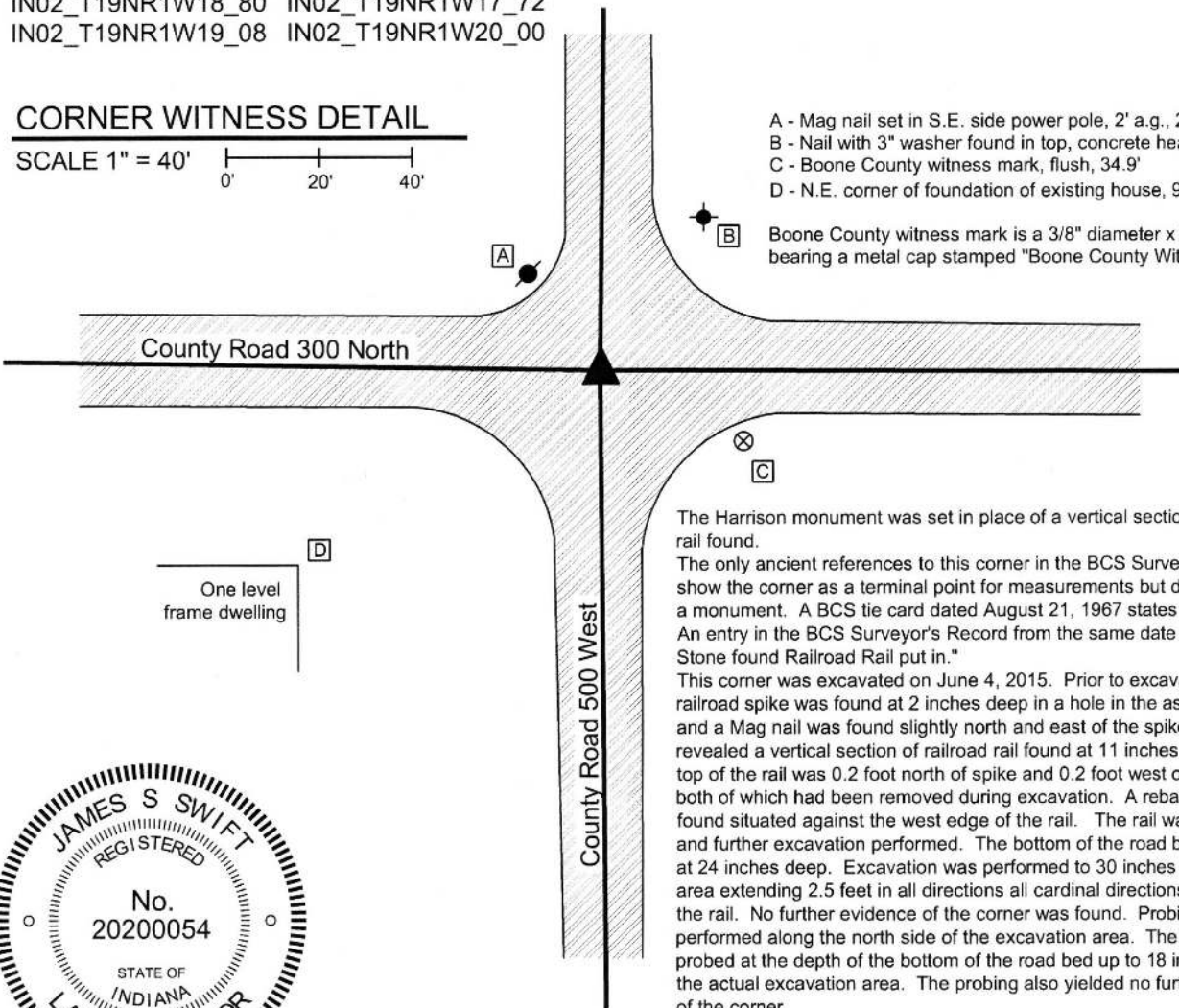
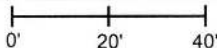
IN02_T19NR1W18_80 IN02_T19NR1W17_72

IN02_T19NR1W19_08 IN02_T19NR1W20_00



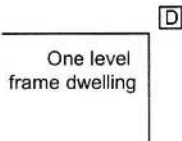
CORNER WITNESS DETAIL

SCALE 1" = 40'



- A - Mag nail set in S.E. side power pole, 2' a.g., 24.4'
- B - Nail with 3" washer found in top, concrete headwall, 40.0'
- C - Boone County witness mark, flush, 34.9'
- D - N.E. corner of foundation of existing house, 92.9'

Boone County witness mark is a 3/8" diameter x 2' long rebar bearing a metal cap stamped "Boone County Witness Point."



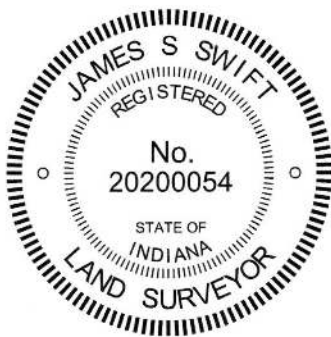
The Harrison monument was set in place of a vertical section of railroad rail found.

The only ancient references to this corner in the BCS Surveyor's Record show the corner as a terminal point for measurements but do not describe a monument. A BCS tie card dated August 21, 1967 states "No stone." An entry in the BCS Surveyor's Record from the same date states "No Stone found Railroad Rail put in."

This corner was excavated on June 4, 2015. Prior to excavation, a railroad spike was found at 2 inches deep in a hole in the asphalt roadway and a Mag nail was found slightly north and east of the spike. Excavation revealed a vertical section of railroad rail found at 11 inches deep. The top of the rail was 0.2 foot north of spike and 0.2 foot west of the mag nail, both of which had been removed during excavation. A rebar was also found situated against the west edge of the rail. The rail was removed and further excavation performed. The bottom of the road bed was found at 24 inches deep. Excavation was performed to 30 inches deep in an area extending 2.5 feet in all directions all cardinal directions, centered on the rail. No further evidence of the corner was found. Probing was performed along the north side of the excavation area. The ground was probed at the depth of the bottom of the road bed up to 18 inches north of the actual excavation area. The probing also yielded no further evidence of the corner.

The railroad rail fit with local evidence of the corner in the form of the approximate centers of the roads which extended in all cardinal directions from the corner. The rail was held as marking the corner. The rail was removed during excavation and a Harrison monument was set in the same position as the rail.

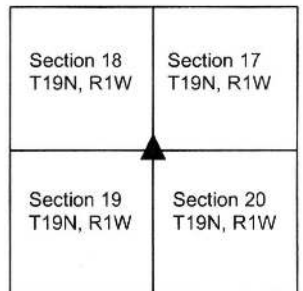
This corner was originally established as a wood post in 1829.



Kenneth E. Hedge
 Kenneth E. Hedge, County Surveyor

James S. Swift
 James S. Swift, IN LS 20200054
 March 24, 2016

Washington Township



Jefferson Township

SECTION CORNER RECORD

NW 300-550

BOONE COUNTY SURVEYOR'S OFFICE

State Plane grid coordinates NAD83 (2011):

North: 1761426.58 East: 3095702.33 (U.S. survey feet)

Type of monument: Harrison, 4" disk 'Section Corner'

Depth: One inch below adjacent road surface

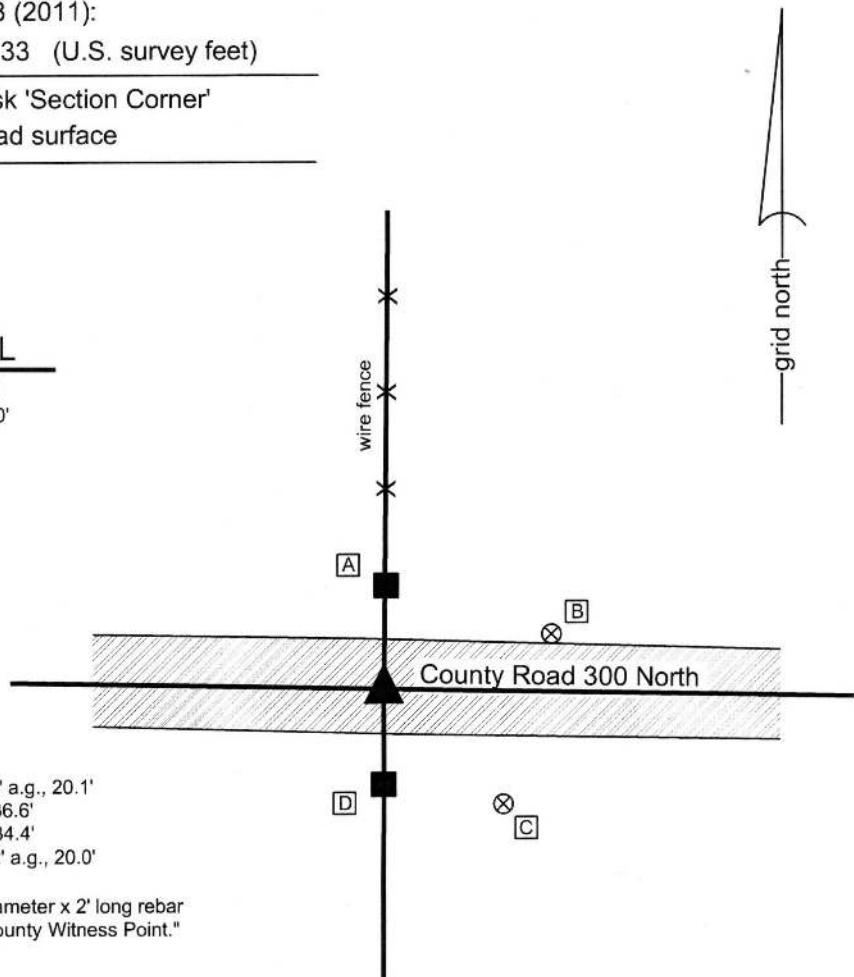
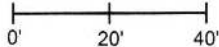
Indiana tie card references:

IN02_T19NR1W18_76

IN02_T19NR1W19_04

CORNER WITNESS DETAIL

SCALE 1" = 40'



- A - Mag nail set in S. side, wood post, 2' a.g., 20.1'
- B - Boone County witness mark, flush, 36.6'
- C - Boone County witness mark, flush, 34.4'
- D - Mag nail set in N. side, wood post, 2' a.g., 20.0'

Boone County witness mark is a 3/8" diameter x 2' long rebar bearing a metal cap stamped "Boone County Witness Point."

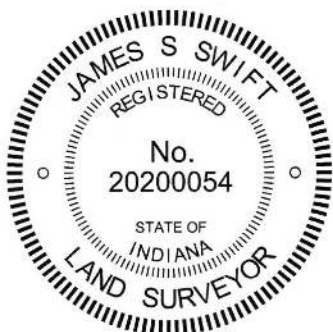
The Harrison monument was set in place of a vertical section of railroad rail found.

A BCS record dated June 13, 1860 states, with respect to this corner, "Reestab'd" but provides no further information. A BCS tie card dated June 3, 1971 states "No stone & RRR put in."

This corner was excavated on June 10, 2015. Prior to excavation, a 5/8 inch diameter rebar with a metal cap (markings illegible) was found at 2 inches deep in a hole in the asphalt roadway. Excavation revealed a vertical section of railroad rail found at 11 inches deep, generally below, though slightly east of the rebar. Two additional rebars were also found, one on the north side and one on the south side of the railroad rail. Excavation of an area extending 3 feet north, 2.5 feet east, 2 feet south, and 2.5 feet west of the rail revealed no further evidence of the corner. The bottom of the road bed was found at 24 inches deep. Excavation was performed to a minimum of 26 inches deep.

The railroad rail was accepted as being the monument called for in the 1971 record. The rail fit with local evidence of the corner in the form of the roadway to the east and west and posts on the north and south sides of the road. The rail was held as marking the corner. The rail and all three rebars were removed during excavation and a Harrison Monument was set in the position of the rail, as found.

This corner was originally established as a wood post in 1829.



Kenneth E. Hedge
Kenneth E. Hedge, County Surveyor

James S. Swift
James S. Swift, IN LS 20200054
March 24, 2016

Washington
Township

Section 18
T19N, R1W

Jefferson
Township

Section 19
T19N, R1W