

SECTION CORNER RECORD

SW 300-550

BOONE COUNTY SURVEYOR'S OFFICE

State Plane grid coordinates NAD83 (2011):

North: 1729518.99 East: 3095721.29 (U.S. survey feet)

Type of monument: Harrison, 4" disk 'Section Corner'

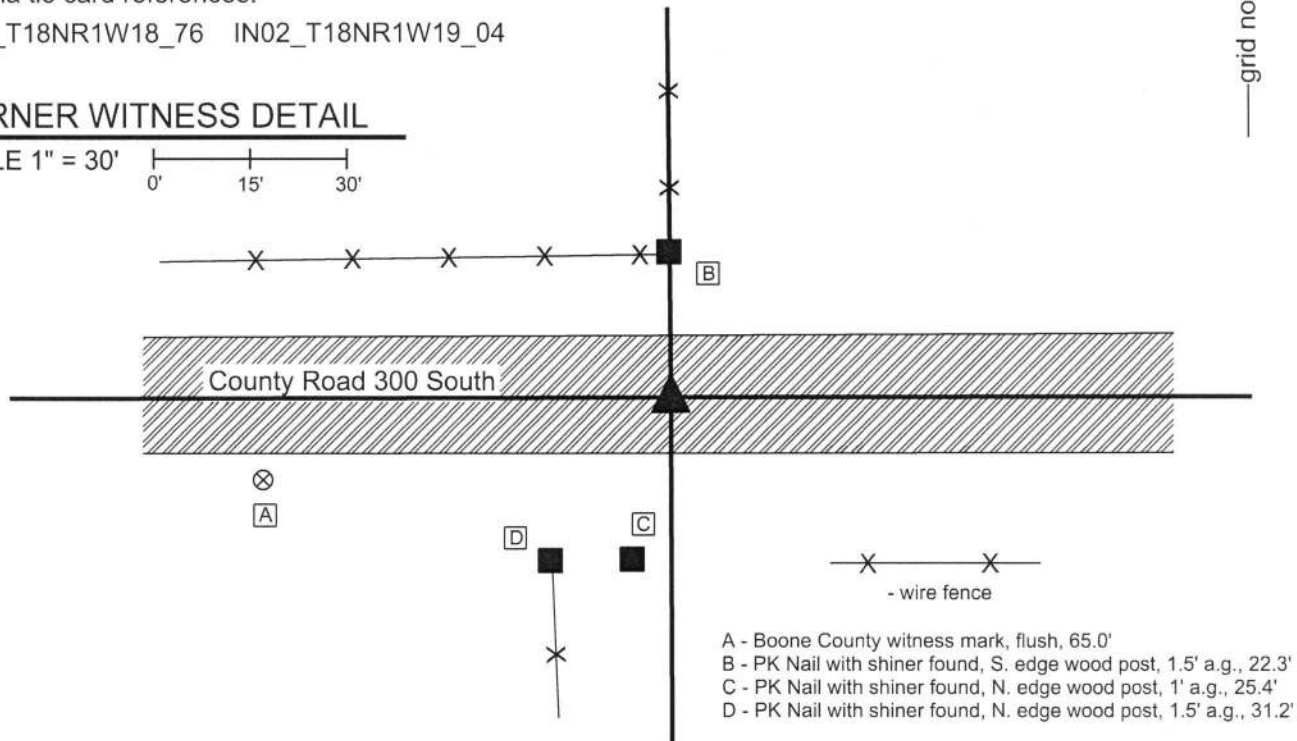
Depth: One inch below adjacent road surface

Indiana tie card references:

IN02_T18NR1W18_76 IN02_T18NR1W19_04

CORNER WITNESS DETAIL

SCALE 1" = 30'

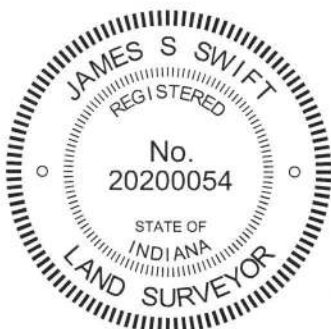


The Harrison monument was set in place of a railroad spike found.

A BCS record dated October 15-16, 1858, states, with respect to this corner, "Reestablished from old Wit tree. Rock 9x10." A BCS tie card dated January 18, 1994 shows the corner as a railroad spike in the center of County Road 300 South in line with a fence to the north.

This corner was excavated on June 12, 2018. Prior to excavation, a railroad spike was found at the surface of the road, in general agreement with the position shown on the 1994 tie card. Excavation revealed another railroad spike found below the first spike found. Further excavation of an area extending 2.5 feet in all cardinal directions from the railroad spikes revealed no further evidence of the corner. The bottom of the road bed was found at 19 inches deep. Excavation was performed to approximately 21 inches deep. It is noted that the bottom of the road bed was composed of rocky material which is typically associated with wet ground and may explain the fact that no stone was found. The found railroad spikes fit well with the relative positions of proximate corners and fit well with local evidence of the corner in the form of the existing roadway and fence to the north. The railroad spikes were held as marking the corner and were replaced with a Harrison monument in the same position.

This corner was originally established as a wood post in 1820.



Kenneth E. Hedge
Kenneth E. Hedge, County Surveyor

James S. Swift
James S. Swift, IN LS 20200054
June 27, 2018

Jackson
Township

Section 18
T18N, R1W

Section 19
T18N, R1W

SECTION CORNER RECORD

BOONE COUNTY SURVEYOR'S OFFICE

SW 300-600

Data for Corner 1 only:

State Plane grid coordinates NAD83 (2011):

North: 1729563.81 East: 3093253.40 (U.S. survey feet)

Type of monument: Harrison, 4" disk 'Section Corner'

Depth: Six inches below adjacent gravel road surface

Indiana tie card references:

IN02_T18NR2W13_80 IN02_T18NR1W18_72

IN02_T18NR2W24_08 IN02_T18NR1W19_00

CORNER WITNESS DETAIL

SCALE 1" = 60'

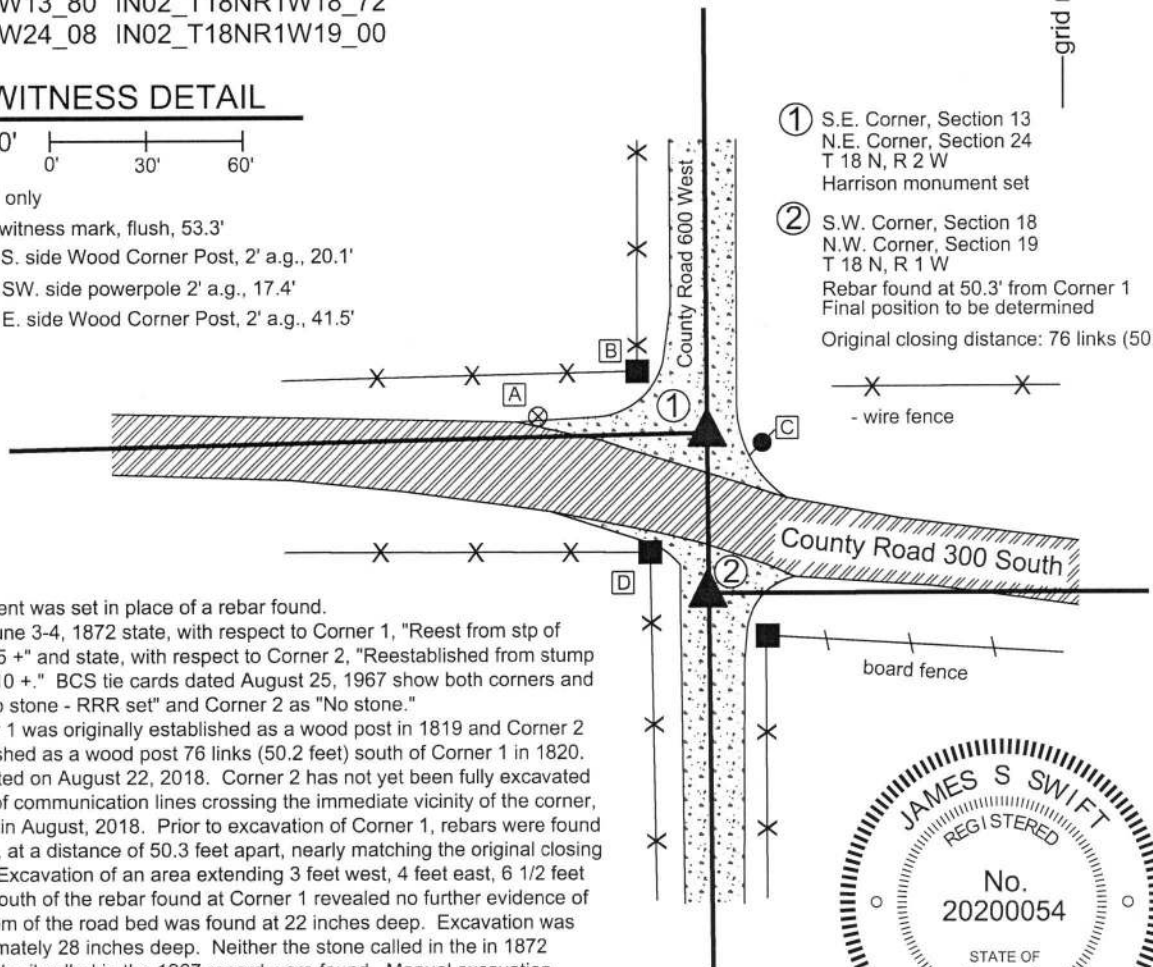
All ties to Corner 1 only

A - Boone County witness mark, flush, 53.3'

B - Mag nail set in S. side Wood Corner Post, 2' a.g., 20.1'

C - Mag nail set in SW. side powerpole 2' a.g., 17.4'

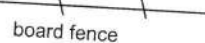
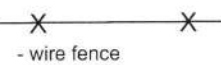
D - Mag nail set in E. side Wood Corner Post, 2' a.g., 41.5'



① S.E. Corner, Section 13
N.E. Corner, Section 24
T 18 N, R 2 W
Harrison monument set

② S.W. Corner, Section 18
N.W. Corner, Section 19
T 18 N, R 1 W
Rebar found at 50.3' from Corner 1
Final position to be determined

Original closing distance: 76 links (50.2')

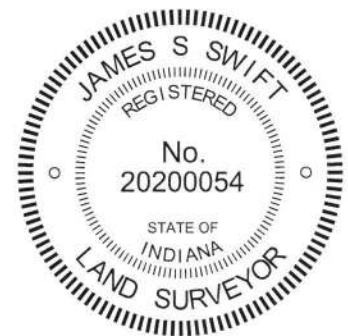


The Harrison monument was set in place of a rebar found.

BCS records dated June 3-4, 1872 state, with respect to Corner 1, "Reest from stp of Beech, set rock 10 7 5 +'" and state, with respect to Corner 2, "Reestablished from stump of Lynn, Rock 16 10 10 +." BCS tie cards dated August 25, 1967 show both corners and show Corner 1 as "No stone - RRR set" and Corner 2 as "No stone."

It is noted that Corner 1 was originally established as a wood post in 1819 and Corner 2 was originally established as a wood post 76 links (50.2 feet) south of Corner 1 in 1820. Corner 1 was excavated on August 22, 2018. Corner 2 has not yet been fully excavated due to the presence of communication lines crossing the immediate vicinity of the corner, as marked by IUPPS in August, 2018. Prior to excavation of Corner 1, rebars were found marking both corners, at a distance of 50.3 feet apart, nearly matching the original closing distance of 76 links. Excavation of an area extending 3 feet west, 4 feet east, 6 1/2 feet north and 3 1/2 feet south of the rebar found at Corner 1 revealed no further evidence of the corner. The bottom of the road bed was found at 22 inches deep. Excavation was performed to approximately 28 inches deep. Neither the stone called in the in 1872 record nor the railroad rail called in the 1967 record were found. Manual excavation around the rebar at Corner 2 revealed no further evidence. Though it was expected that vertical sections of railroad rail would be found at both corners, rails were not found at either corner. It appears that significant grading or roadwork has occurred at this intersection since 1967. It is noted that the positions of the two rebars fit reasonably well with the local evidence of the corners in the form the physical roadways in all four cardinal directions. It is also noted that the distance tie references from the 1967 plans appear to be gone and that most of the various fencing appears to be more recent than 1967.

The found rebar at Corner 1 was held as marking the corner and was replaced with a Harrison monument. The rebar at Corner 2 was left in place, 50.3 feet south of Corner 1. The final position of Corner 2 will be established after the position of the east quarter corner of Section 24 is established.



Jackson Township

Section 13 T18N, R2W	Section 18 T18N, R1W
Section 24 T18N, R2W	Section 19 T18N, R1W

Kenneth E. Hedge
Kenneth E. Hedge, County Surveyor

James S. Swift
James S. Swift, IN LS 20200054

February 6, 2019

SECTION CORNER RECORD

BOONE COUNTY SURVEYOR'S OFFICE

SW 400-550

State Plane grid coordinates NAD83 (2011):

North: 1724237.31 East: 3095747.30 (U.S. survey feet)

Type of monument: Harrison, 4" disk 'Section Corner'

Depth: Six inches below adjacent gravel road surface

Indiana tie card references:

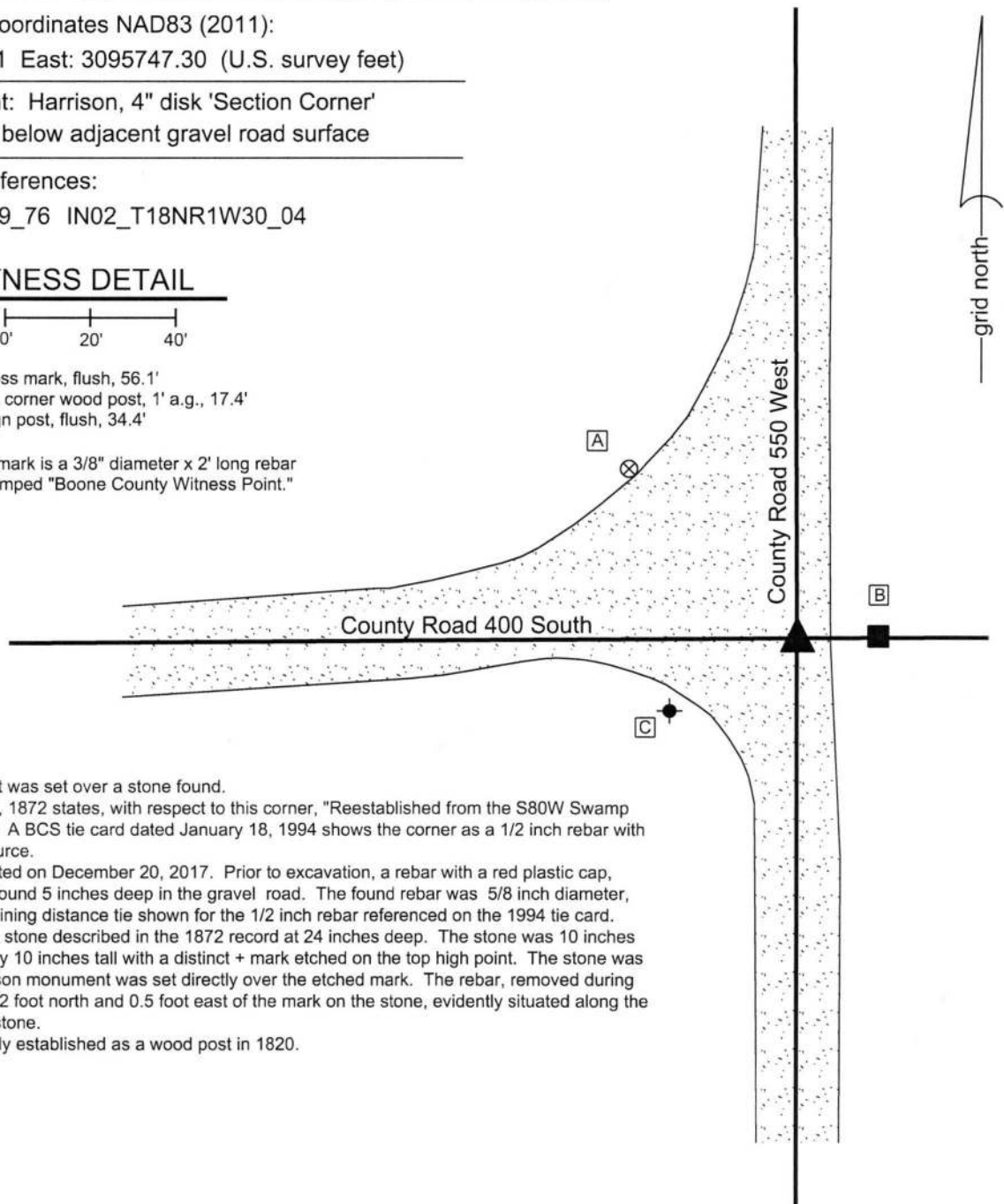
IN02_T18NR1W19_76 IN02_T18NR1W30_04

CORNER WITNESS DETAIL

SCALE 1" = 40'

- A - Boone County witness mark, flush, 56.1'
- B - Mag nail set in S.W. corner wood post, 1' a.g., 17.4'
- C - North edge, stop sign post, flush, 34.4'

Boone County witness mark is a 3/8" diameter x 2' long rebar bearing a metal cap stamped "Boone County Witness Point."



The Harrison monument was set over a stone found.

A BCS record of June 4, 1872 states, with respect to this corner, "Reestablished from the S80W Swamp Ash. Rock 10.10.10 +." A BCS tie card dated January 18, 1994 shows the corner as a 1/2 inch rebar with no documentation of source.

This corner was excavated on December 20, 2017. Prior to excavation, a rebar with a red plastic cap, markings illegible, was found 5 inches deep in the gravel road. The found rebar was 5/8 inch diameter, but fit with the one remaining distance tie shown for the 1/2 inch rebar referenced on the 1994 tie card.

Excavation revealed the stone described in the 1872 record at 24 inches deep. The stone was 10 inches N-S by 10 inches E-W by 10 inches tall with a distinct + mark etched on the top high point. The stone was left in place and a Harrison monument was set directly over the etched mark. The rebar, removed during excavation, had been 0.2 foot north and 0.5 foot east of the mark on the stone, evidently situated along the northeast edge of the stone.

This corner was originally established as a wood post in 1820.



Kenneth E. Hedge
Kenneth E. Hedge, County Surveyor

James S. Swift
James S. Swift, IN LS 20200054
January 31, 2018

Jackson
Township

Section 19
T18N, R1W

Section 30
T18N, R1W

SECTION CORNER RECORD

SW 400-600

BOONE COUNTY SURVEYOR'S OFFICE

State Plane grid coordinates NAD83 (2011):

Corner 1: North: 1724240.58 East: 3093292.35 (U.S. survey feet)

Corner 2: North: 1724220.90 East: 3093292.52 (U.S. survey feet)

Type of monument: Harrison, 4" disk 'Section Corner'

Depth: Six inches below adjacent gravel road surface.

Indiana tie card references:

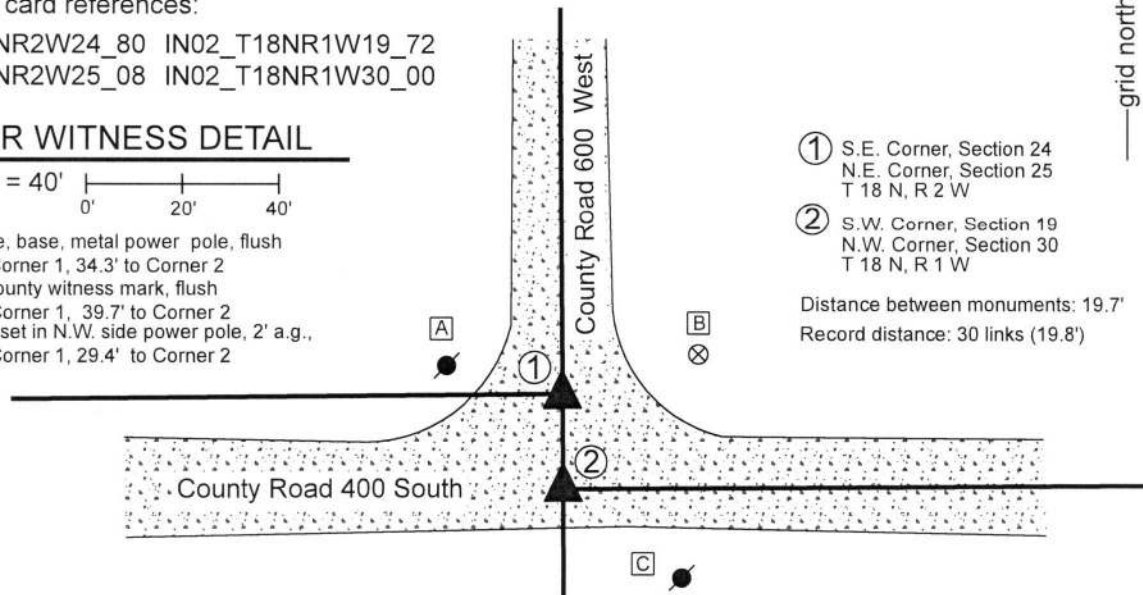
IN02_T18NR2W24_80 IN02_T18NR1W19_72

IN02_T18NR2W25_08 IN02_T18NR1W30_00

CORNER WITNESS DETAIL

SCALE 1" = 40'

- A - East edge, base, metal power pole, flush
23.4' to Corner 1, 34.3' to Corner 2
- B - Boone County witness mark, flush
29.6' to Corner 1, 39.7' to Corner 2
- C - Mag nail set in N.W. side power pole, 2' a.g.,
44.0' to Corner 1, 29.4' to Corner 2



- ① S.E. Corner, Section 24
N.E. Corner, Section 25
T 18 N, R 2 W
- ② S.W. Corner, Section 19
N.W. Corner, Section 30
T 18 N, R 1 W

Distance between monuments: 19.7'
Record distance: 30 links (19.8')

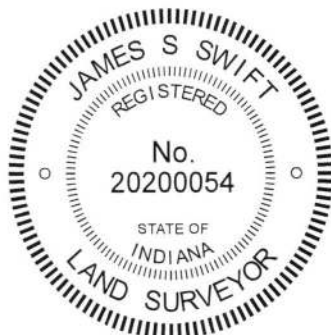
The Harrison monument at Corner 1 was set over a stone found. The Harrison monument at Corner 2 was set in place of a vertical section of railroad rail found.

A BCS record of June 3-4, 1872 describes both corners. In an entry for corner "E" of section 24 (Corner 1 herein) the record states, "Reest. from Oak. Set a rock marked +. 30 links south of this set a rock 21.13.3 +. Cor. sections 19&30." A corresponding record for corner "A" of section 30 (Corner 2 herein), dated June 4, 1872, states "Reestablished 30 links south of corner secs. 24&25 where an oak is green. Set a rock 21.13.3. Also set a rock + at corner 24 & 25."

A BCS tie card with no date but believed to be from the late 1960s or early 1970s shows the intersection and shows a corner with ties and the notation "STONE LOCATED." The tie card indicates that this is for the corner of section 24 & 25, though the graphical representation of the intersection indicates that the corner established on that date is actually the corner of sections 19&30.

These corners were excavated on August 16, 2018. Prior to excavation, a vertical section of railroad rail was known to mark the corner of sections 19&30. The position of a stone marking the corner of sections 24&25 was determined from information shown on a survey by Frank T. Luse, LS20000223 recorded as Instrument 201300014151 in the Office of the Boone County Recorder. Excavation at Corner 1 revealed the vertical section of railroad rail at 3 inches deep. No stone or other evidence was found around the rail. It is believed that the stone which was set in 1872 was removed and replaced with the railroad rail at the time of the creation of the undated tie card, as it is known that this was a common practice of BCS field crews in that era. Excavation at Corner 1 revealed a stone found at 16 inches deep. The stone was of a rough surface and no specific markings were detected on it. The highest point is at the north edge of the stone. This point was at 19.7 feet (0.1 foot less than 30 links) north of the center point of the top of the rail. The top of the rail was held as marking Corner 2. The rail was removed and a Harrison monument was set in the same position. The specific position of Corner 1 was established on a prolongation of the line from the corner 1/2 mile south (see Corner SW 450-600) through the rail at the distance between the top of the rail and the north edge / high point of the stone found at Corner 1. A Harrison monument was set at this position, which fell approximately 0.1 foot west of the high point of the found stone. Hence the monument is situated directly over the stone but 0.1 foot west of the high point on the north edge and the two corners are at 19.7 feet apart, rather than 19.8 feet. It is noted that if the full 30 link separation were held, Corner 1 would fall slightly north of the north edge of the found stone. It is noted that the east-west roadway of County Road 400 South does not jog at this corner and that the roadway between Corner 1 and the corner 1/2 mile west (see Corner SW 400-650) is south of the section line.

Corner 1 was originally established in 1819. Corner 2 was established in 1820, 30 links south of Corner 1.



Kenneth E. Hedge
 Kenneth E. Hedge, County Surveyor

James S. Swift
 James S. Swift, IN LS 20200054
 August 29, 2018

Jackson Township

