

# SECTION CORNER RECORD

# NE 900-600

## BOONE COUNTY SURVEYOR'S OFFICE

State Plane grid coordinates NAD83 (2011):

Corner 1: North: 1793764.62 East: 3155910.87 (U.S. survey feet)

Corner 2: North: 1793920.37 East: 3155909.67 (U.S. survey feet)

Corner 1: Harrison, 4" disk 'Section Corner', flush

Corner 2: 5/8" rebar with metal cap 'Boone County Surveyor, 14" deep

Indiana tie card references:

IN02\_T20NR1E13\_80 IN02\_T20NR2E18\_72

IN02\_T20NR1E24\_08 IN02\_T20NR2E19\_00

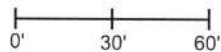
① S.E. Corner, Section 13  
N.E. Corner, Section 24  
T 20 N, R 1 E  
Harrison Monument set

② S.W. Corner, Section 18  
N.W. Corner, Section 19  
T 20 N, R 2 E  
5/8 inch rebar set, 14 inches deep

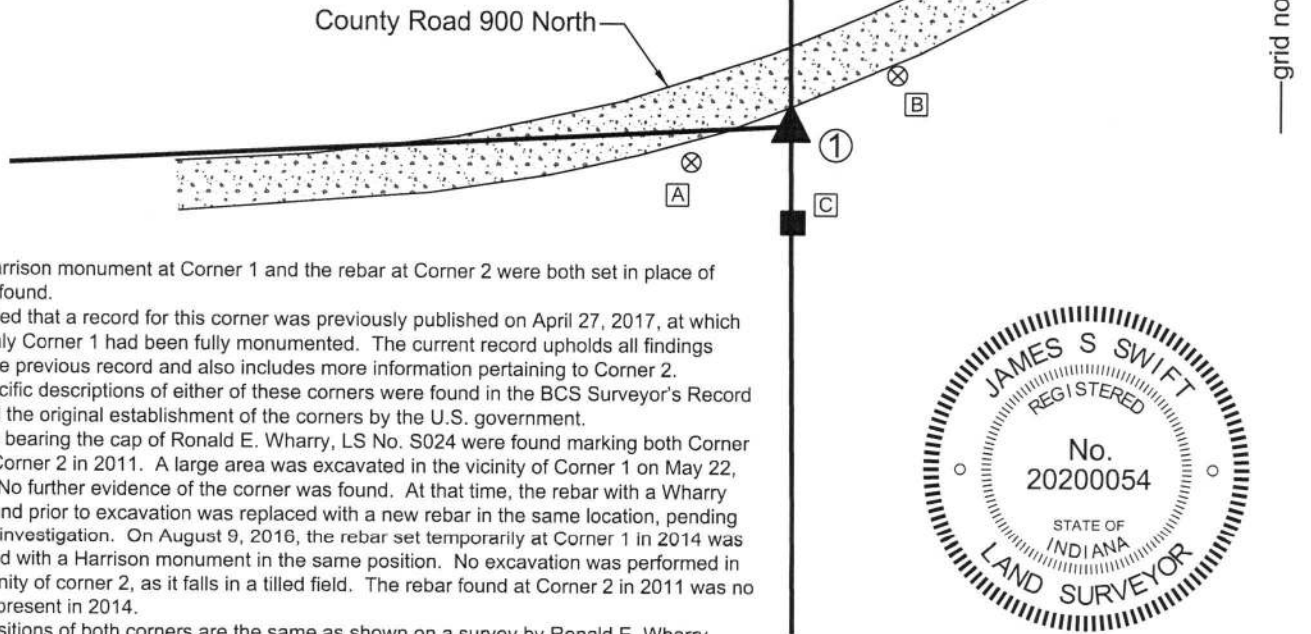
Distance between monuments: 155.8' (236 links)

### CORNER WITNESS DETAIL

SCALE 1" = 60'



- A - Boone County witness mark, flush, 33.1'  
33.1' to Corner 1, 169.6' to Corner 2
- B - Boone County witness mark, flush  
36.5' to Corner 1, 143.9' to Corner 2
- C - Wood post amidst pile of rocks and rubble  
29' to Corner 1, 185' to Corner 2



The Harrison monument at Corner 1 and the rebar at Corner 2 were both set in place of rebars found.

It is noted that a record for this corner was previously published on April 27, 2017, at which time only Corner 1 had been fully monumented. The current record upholds all findings from the previous record and also includes more information pertaining to Corner 2.

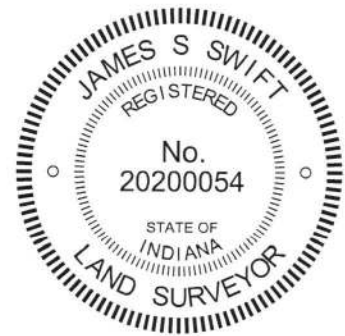
No specific descriptions of either of these corners were found in the BCS Surveyor's Record beyond the original establishment of the corners by the U.S. government.

Rebars bearing the cap of Ronald E. Wharry, LS No. S024 were found marking both Corner 1 and Corner 2 in 2011. A large area was excavated in the vicinity of Corner 1 on May 22, 2014. No further evidence of the corner was found. At that time, the rebar with a Wharry cap found prior to excavation was replaced with a new rebar in the same location, pending further investigation. On August 9, 2016, the rebar set temporarily at Corner 1 in 2014 was replaced with a Harrison monument in the same position. No excavation was performed in the vicinity of corner 2, as it falls in a tilled field. The rebar found at Corner 2 in 2011 was no longer present in 2014.

The positions of both corners are the same as shown on a survey by Ronald E. Wharry recorded as Instrument 201100003587 in the Boone County Surveyor's Office.

The Wharry survey holds the record closing distance of 236 links between the corners, which also fits with the evidence of the roadways to the east and west of the corners. This distance yields a reasonable position for Corner 2. On April 9, 2018, a rebar with a metal cap stamped "Boone County Surveyor" was set in the same position as the rebar originally found in 2011 marking Corner 2. The rebar was set at 14 inches deep to avoid disturbance by agricultural equipment.

Corner 1 was originally established as a wood post in 1819. Corner 2 was originally established as a wood post in 1821.



James S. Swift, IN LS 20200054

Kenneth E. Hedge, County Surveyor

April 18, 2018

Marion Township	Clinton Township
Section 13 T20N, R1E	Section 18 T20N, R2E
Section 24 T20N, R1E	Section 19 T20N, R2E

# SECTION CORNER RECORD

## BOONE COUNTY SURVEYOR'S OFFICE

NE 900-650

State Plane grid coordinates NAD83 (CORS96):

North: 1793978.88 East: 3158553.59 (U.S. survey feet)

Type of monument: Harrison, 4" disk 'Section Corner'

Depth: six inches below adjacent gravel road surface

Indiana tie card references:

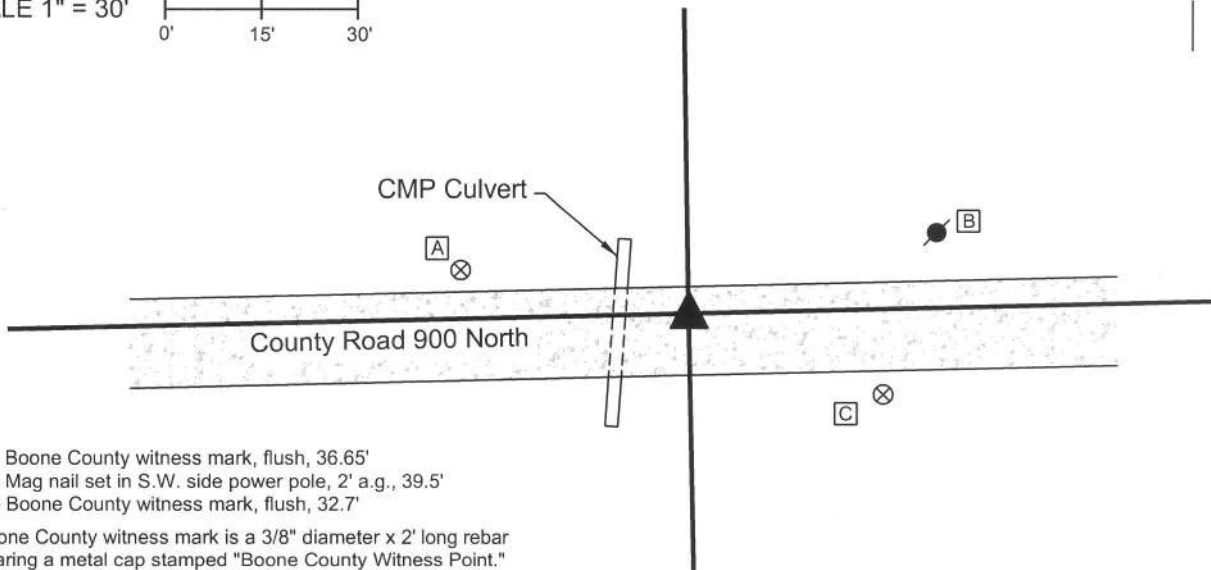
IN02\_T20NR2E18\_76

IN02\_T20NR2E19\_04



### CORNER WITNESS DETAIL

SCALE 1" = 30'



A - Boone County witness mark, flush, 36.65'

B - Mag nail set in S.W. side power pole, 2' a.g., 39.5'

C - Boone County witness mark, flush, 32.7'

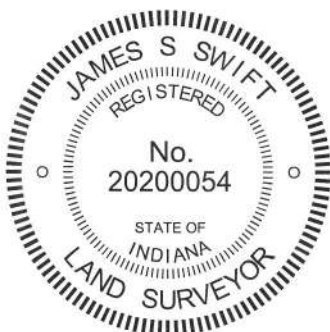
Boone County witness mark is a 3/8" diameter x 2' long rebar bearing a metal cap stamped "Boone County Witness Point."

The harrison monument was set in place of a vertical section of steel T-post found.

A BCS record of October 22, 1873 states "the point found from stump of one tree." A BCS record of May 19, 1895 states "Reestablished. Set Rock 24x15x8 marked +." A BCS tie card dated January 18, 1994 shows the corner as a metal post with no documentation of source.

This corner was excavated on September 19, 2013. Prior to excavation a steel T-post was found at 11 inches deep in the gravel road. Excavation of an area extending 2 feet north, 2 feet east, 7 feet south and 10 feet west of the metal post revealed no further evidence of the corner. Modern fill material, being #53 road stone was found immediately below the gravel road surface extending to approximately 12 inches deep. No ancient road bed material was found between the modern fill and the clay layer below the road. At the west edge of the area of excavation the modern fill material was found to extend deeper and appears to be back fill material for a culvert which crosses the road immediately west of the corner. The presence of the modern fill material indicates that sufficient construction has been performed on the road bed that it is most likely that the corner stone set in 1895 has been removed. Analysis of measurements from the 1895 record and the corners to the east and west indicate that the corner may be located up to 8 feet further west, but given the presence of the culvert and the lack of evidence found in the road, the metal post shown on the 1994 tie card was accepted as marking the corner. This marker was replaced with a harrison monument in the same position.

This corner was originally established as a wood post in 1821.



*Kenneth E. Hedge*  
Kenneth E. Hedge, County Surveyor

*James S. Swift*  
James S. Swift, IN LS 20200054  
February 5, 2015

Marion Township

Section 18  
T20N, R2E

Section 19  
T20N, R2E

# SECTION CORNER RECORD

## BOONE COUNTY SURVEYOR'S OFFICE

NE 900-700

State Plane grid coordinates NAD83 (CORS96):

North: 1794038.31 East: 3161197.33 (U.S. survey feet)

Type of monument: Harrison, 4" disk 'Section Corner'

Depth: six inches below adjacent gravel road surface

Indiana tie card references:

IN02\_T20NR2E18\_80

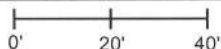
IN02\_T20NR2E17\_72

IN02\_T20NR2E19\_08

IN02\_T20NR2E20\_00

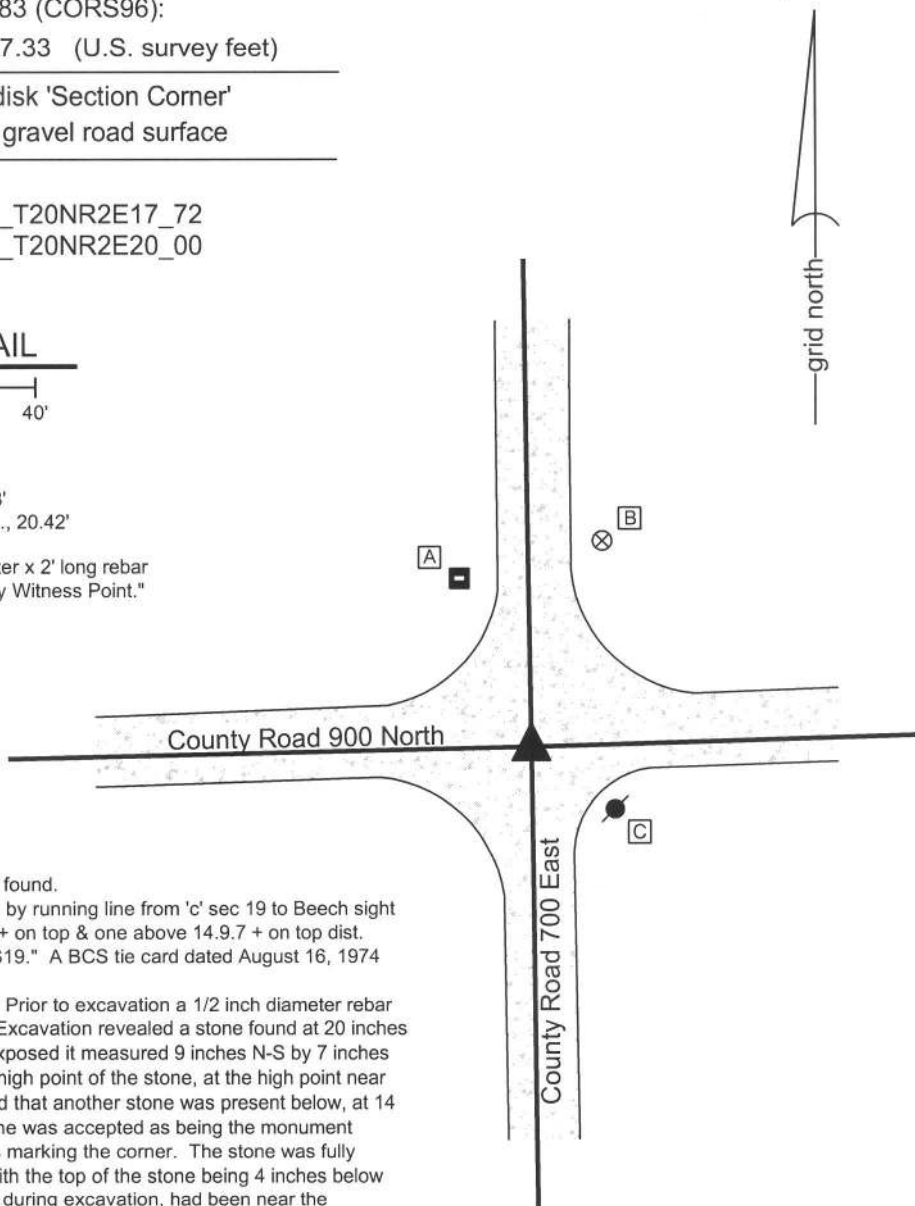
### CORNER WITNESS DETAIL

SCALE 1" = 40'



- A - East edge, metal stop sign post, 37.56'
- B - Boone County witness mark, flush, 45.38'
- C - Mag nail set in N. side power pole, 2' a.g., 20.42'

Boone County witness mark is a 3/8" diameter x 2' long rebar bearing a metal cap stamped "Boone County Witness Point."

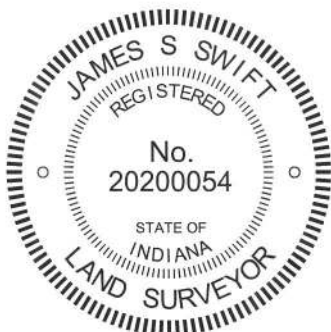


The harrison monument was set over a stone found.

A BCS record of April 28, 1883 states "Found by running line from 'c' sec 19 to Beech sight tree north (distance 49.20) Set Rock 6.11.13 + on top & one above 14.9.7 + on top dist. 29.13 south of sight tree & 20.07 north of 'c' S19." A BCS tie card dated August 16, 1974 states "no stone found."

This corner was excavated on July 30, 2013. Prior to excavation a 1/2 inch diameter rebar was found at the surface of the gravel road. Excavation revealed a stone found at 20 inches deep. With 6 inches of the top of the stone exposed it measured 9 inches N-S by 7 inches E-W. A vague chisel mark was visible at the high point of the stone, at the high point near the north edge of the stone. Probing indicated that another stone was present below, at 14 inches from the top of the top stone. The stone was accepted as being the monument described in the 1883 record and was held as marking the corner. The stone was fully embedded in the clay layer below the road, with the top of the stone being 4 inches below the top of the clay layer. The rebar, removed during excavation, had been near the southwest edge of the stone, being 0.5 foot south and 0.6 foot west of the etched mark on the high point. The stone was left in place and a harrison monument was set directly over the etched + mark.

This corner was originally established as a wood post in 1821.



*Kenneth E. Hedge*  
Kenneth E. Hedge, County Surveyor

*James S. Swift*  
James S. Swift, IN LS 20200054  
February 5, 2015

Marion Township

Section 18 T20N, R2E	Section 17 T20N, R2E
Section 19 T20N, R2E	Section 20 T20N, R2E

PHOTOGRAPHIC DOCUMENTATION

Date of photography: July 30, 2013

View of the stone as first exposed.  
View from above and west.



View from above, showing the etched "+" mark on the top of the stone.



View from above the stone, looking west along County Road 900 North.



View from the north, looking across the stone and south along County Road 700 East.



For details and documentation, refer to related sheet "Section Corner Record."

# SECTION CORNER RECORD

NE 950-600

## BOONE COUNTY SURVEYOR'S OFFICE

Information for Corner One only

State Plane grid coordinates NAD83 (2011):

North: 1796415.82 East: 3155890.38 (U.S. survey feet)

Type of monument: Harrison, 4" disk 'Section Corner'

Depth: One inch above adjacent ground

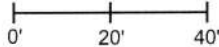
Indiana tie card references:

IN02\_T20NR1E13\_44 IN02\_T20NR2E18\_36



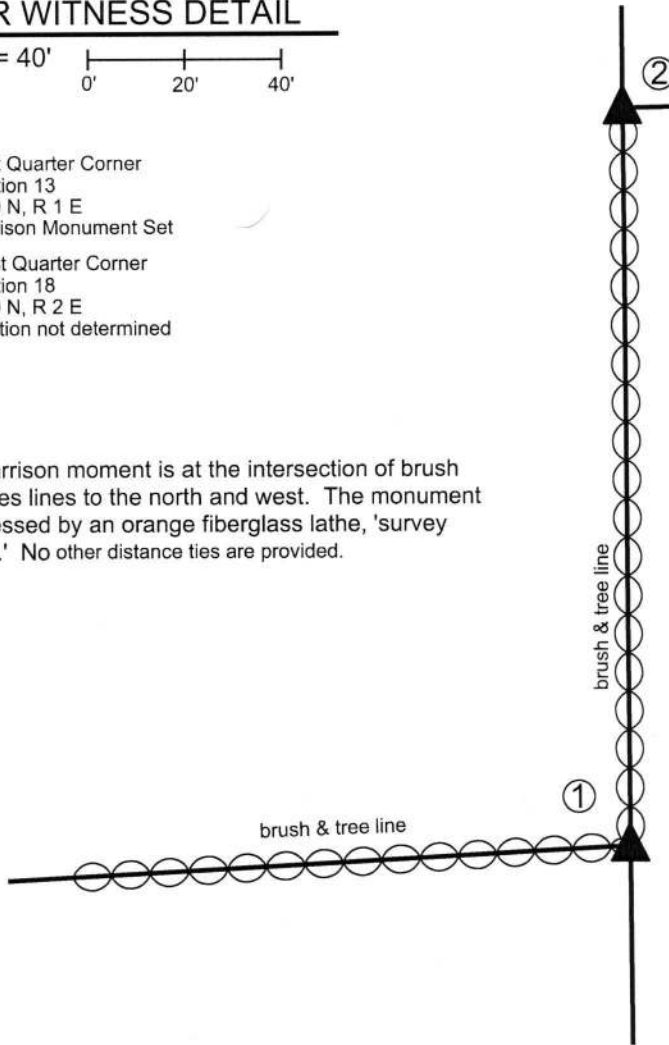
### CORNER WITNESS DETAIL

SCALE 1" = 40'



- ① East Quarter Corner  
Section 13  
T 20 N, R 1 E  
Harrison Monument Set
- ② West Quarter Corner  
Section 18  
T 20 N, R 2 E  
Position not determined

The Harrison monument is at the intersection of brush and trees lines to the north and west. The monument is witnessed by an orange fiberglass lathe, 'survey marker.' No other distance ties are provided.



The Harrison monument was set in place of a rebar found. A BCS record dated April 14-15, 1857 states, with respect to this corner, "Reestablished. Set Rock 17.12 in."

This corner was excavated on March 14, 2018. Prior to excavation, a rebar with plastic cap stamped REW was found at the intersection of brush and tree lines to the north and west, generally in line with standing fence to the west which begins approximately 75 feet west of the corner, and in-line with posts and fencing found in the vicinity of Corner 2. The rebar is shown as being set at Corner 1 on a survey by Ronald E. Wharry, LS #S0420 recorded as Instrument 201100003587 in the Office of the Boone County Recorder.

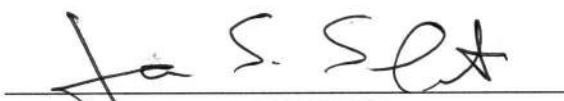
Probing and manual excavation in the immediate vicinity of the rebar yielded no further evidence of the corner. No fencing was found at the corner and it appears that the area has been cleared substantially in the recent past. The trees and brush to the north and west do not appear to be old. It is believed that the stone mentioned in the 1857 record was most likely removed previously.

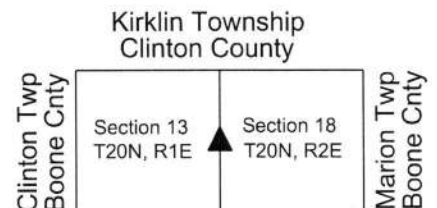
The rebar with the Wharry cap was accepted as marking the corner and was replaced with a Harrison Monument in the same position.

Corner 2 is not an original corner of the PLSS. The exact position of corner 2 was not determined, but is shown on the aforementioned Wharry survey.

Corner 1 was originally established as a wood post in 1819.

  
Kenneth E. Hedge, County Surveyor

  
James S. Swift, IN LS 20200054  
April 3, 2018



# SECTION CORNER RECORD

NE 950-700

## BOONE COUNTY SURVEYOR'S OFFICE

State Plane grid coordinates NAD83 (CORS96):

North: 1796696.08 East: 3161155.20 (U.S. survey feet)

Type of monument: Harrison, 4" disk 'Section Corner'

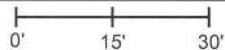
Depth: four inches below adjacent gravel road surface

Indiana tie card references:

IN02\_T20NR2E18\_44

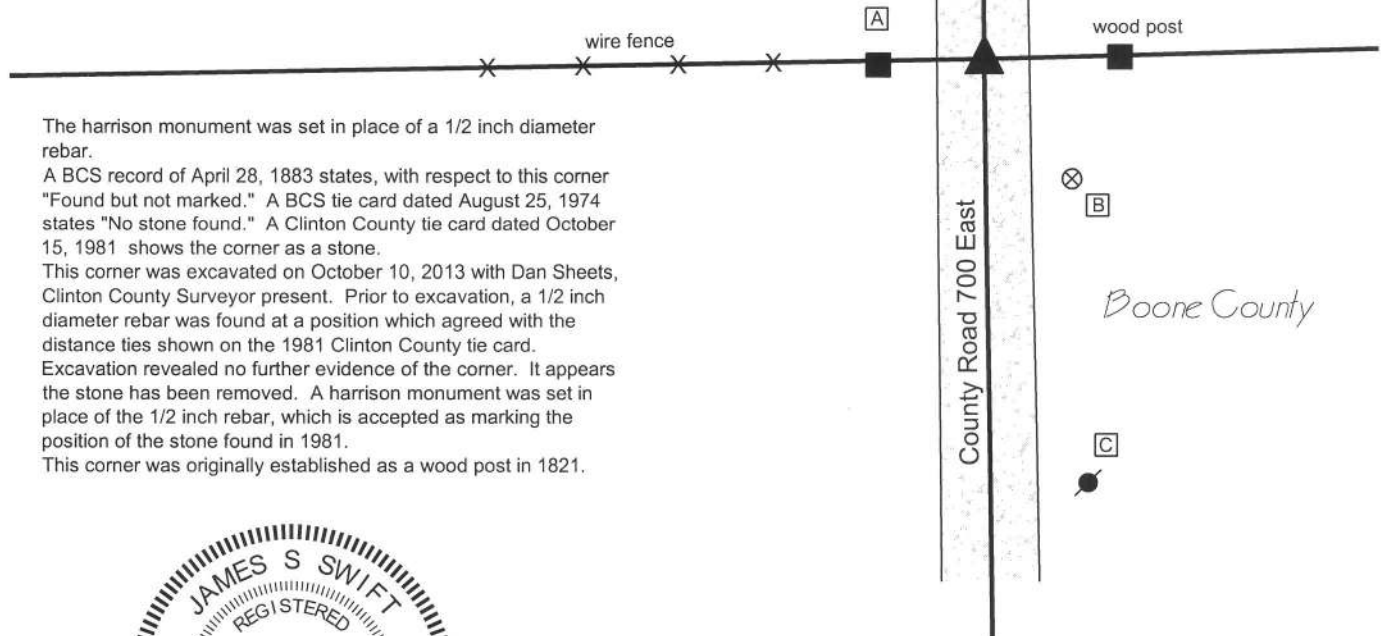
IN02\_T20NR2E17\_36

### CORNER WITNESS DETAIL

SCALE 1" = 30' 

- A - Mag nail set in E. side, wood end post, 1' a.g., 16.47'
- B - Boone County witness mark, flush, 23.06'
- C - Mag nail set in N.W. side, power pole, 2' a.g., 66.86'

Boone County witness mark is a 3/8" diameter x 2' long rebar bearing a metal cap stamped "Boone County Witness Point."



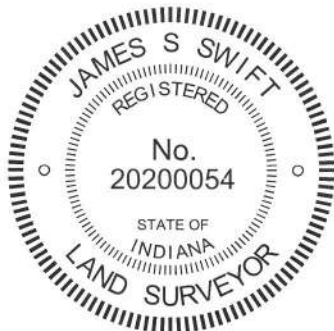
The harrison monument was set in place of a 1/2 inch diameter rebar.

A BCS record of April 28, 1883 states, with respect to this corner "Found but not marked." A BCS tie card dated August 25, 1974 states "No stone found." A Clinton County tie card dated October 15, 1981 shows the corner as a stone.


This corner was excavated on October 10, 2013 with Dan Sheets, Clinton County Surveyor present. Prior to excavation, a 1/2 inch diameter rebar was found at a position which agreed with the distance ties shown on the 1981 Clinton County tie card.

Excavation revealed no further evidence of the corner. It appears the stone has been removed. A harrison monument was set in place of the 1/2 inch rebar, which is accepted as marking the position of the stone found in 1981.

This corner was originally established as a wood post in 1821.



  
 Kenneth E. Hedge, County Surveyor

  
 James S. Swift, IN LS 20200054  
 February 5, 2015

Kirklin Township  
 Clinton County  
 Marion Township  
 Boone County

