

# SECTION CORNER RECORD

## BOONE COUNTY SURVEYOR'S OFFICE

NW 900-500

State Plane grid coordinates NAD83 (CORS96):

North: 1793202.81 East: 3098255.23 (U.S. survey feet)

Type of monument: Harrison, 4" disk 'Section Corner'

Depth: six inches below adjacent gravel road surface

Indiana tie card references:

IN02\_T20NR1W18\_80 IN02\_T20NR1W17\_72

IN02\_T20NR1W19\_08 IN02\_T20NR1W20\_00

### CORNER WITNESS DETAIL

SCALE 1" = 30'

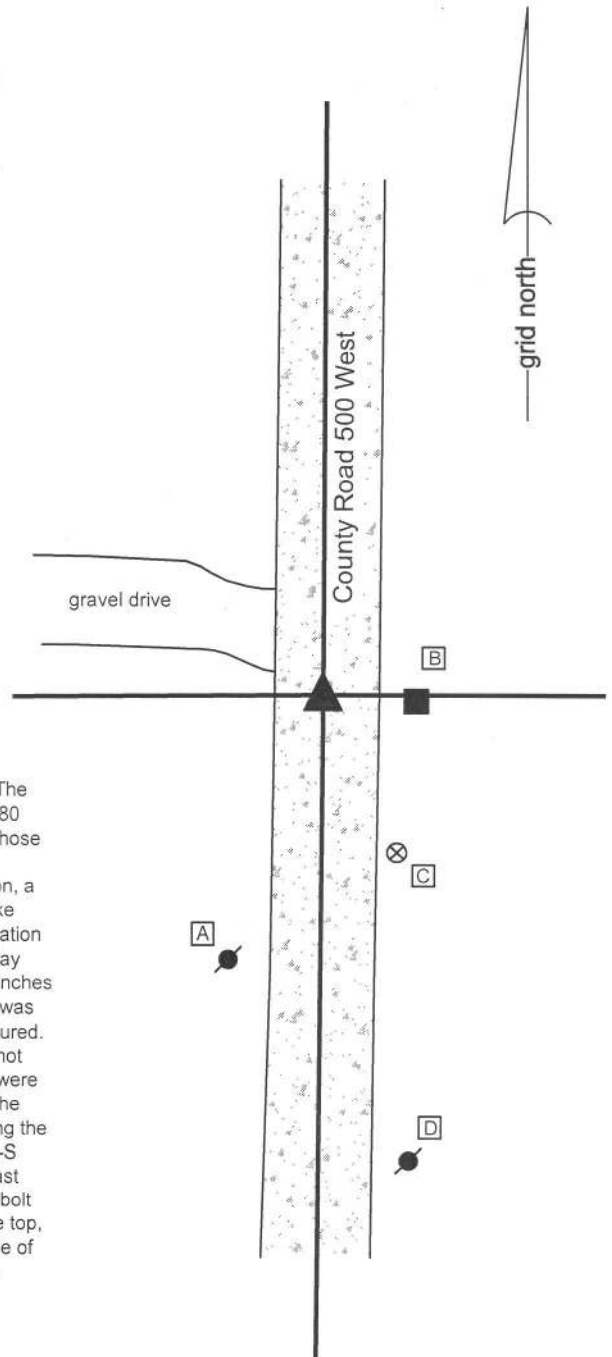
A - Mag nail set in E. side power pole, 2' a.g., 43.4'

B - Mag nail set in S. side wood post, 1' a.g., 14.5'

C - Boone County witness mark, flush, 27.0'

D - Mag nail set in N. side power pole, 72.6'

Boone County witness mark is a 3/8" diameter x 2' long rebar bearing a metal cap stamped "Boone County Witness Point."

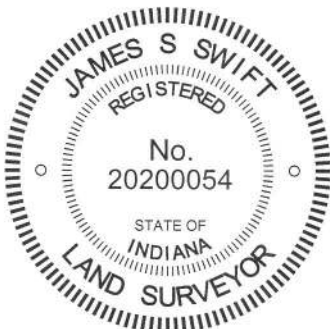


The Harrison monument was set over the top, center of a stone found.

No specific descriptions of this corner were found in the BCS Surveyor's Record. The corner is mentioned as the terminal point for measurements in records of 1863, 1880 and 1883, indicating that some monument was present from which to measure at those times. No recent BCS tie cards were found referencing this corner.

Excavation was performed at this corner on September 8, 2014. Prior to excavation, a square head "bolt spike" was found 3 inches deep in the gravel road. The bolt spike was removed and found to be on a 5/8 inch diameter shaft, 12 inches long. Excavation revealed a stone found at 14 inches deep. The stone was fully embedded in the clay layer below the road with the top of the stone at the top of the clay layer. With six inches of the top of the stone exposed, it measured 11 inches N-S by 13 inches E-W and was clearly larger in the vertical dimension. The total height of the stone was not measured. The stone had a generally flat top. A vague, possible mark was visible on top but not positively confirmed as being created by humans. The characteristics of this rock were similar to those of other stones found for which the records are similar, being that the County Surveyor had apparently found a monument at the corner rather than setting the monument. The stone fit well with local evidence in the form of the center of the N-S and approximately in-line with, though slightly north of, the old wood post on the east side of the road. The top, center of the stone was held as marking the corner. The bolt spike, removed during excavation, had been 0.8 foot south and 0.8 foot west of the top, center of the stone, which would have been approximately along the southwest side of the stone. The stone was left in place and a Harrison monument was set over the approximate center point of the flat top of the stone.

This corner was originally established as a wood post in 1829.



*Kenneth E. Hedge*  
 Kenneth E. Hedge, County Surveyor

*James S. Swift*  
 James S. Swift, IN LS 20200054  
 March 27, 2015

Washington Township

Section 18 T20N, R1W	Section 17 T20N, R1W
Section 19 T20N, R1W	Section 20 T20N, R1W

PHOTOGRAPHIC DOCUMENTATION

Date of photography: September 8, 2014

The stone as originally found.



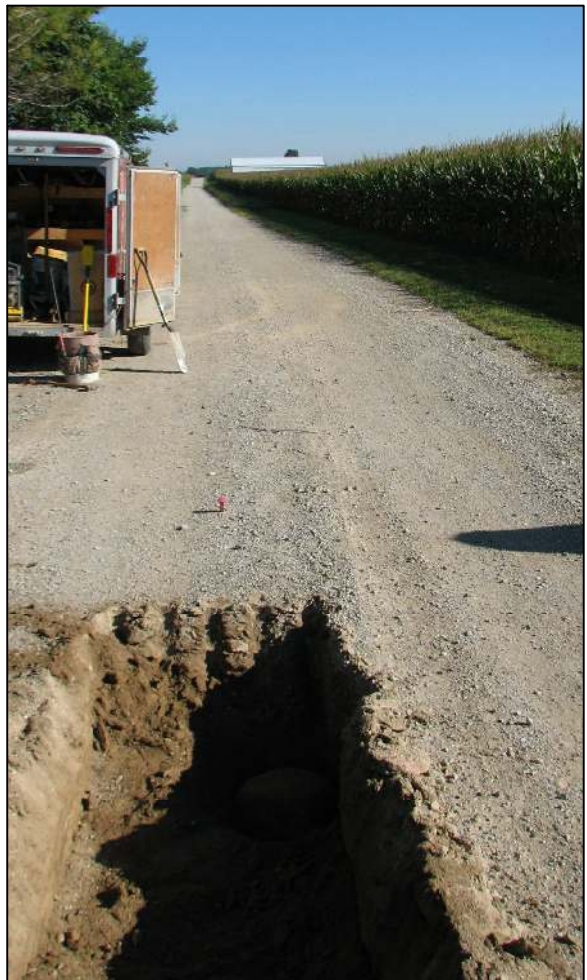
The stone more fully exposed.



View from the west, looking across the stone (in the shadows) and towards the post on the east edge of County Road 500 East.



View from the south, looking across the stone (in the shadows) and north along County Road 500 East.



For details and documentation, refer to related sheet "Section Corner Record."

# SECTION CORNER RECORD

NW 900-550

## BOONE COUNTY SURVEYOR'S OFFICE

State Plane grid coordinates NAD83 (2011):  
North: 1793183.21 East: 3095605.80 (U.S. survey feet)

Type of monument: Harrison, 4" disk 'Section Corner'  
Depth: Four inches below adjacent gravel road surface

Indiana tie card references:

IN02\_T20NR1W18\_76  
IN02\_T20NR1W19\_04

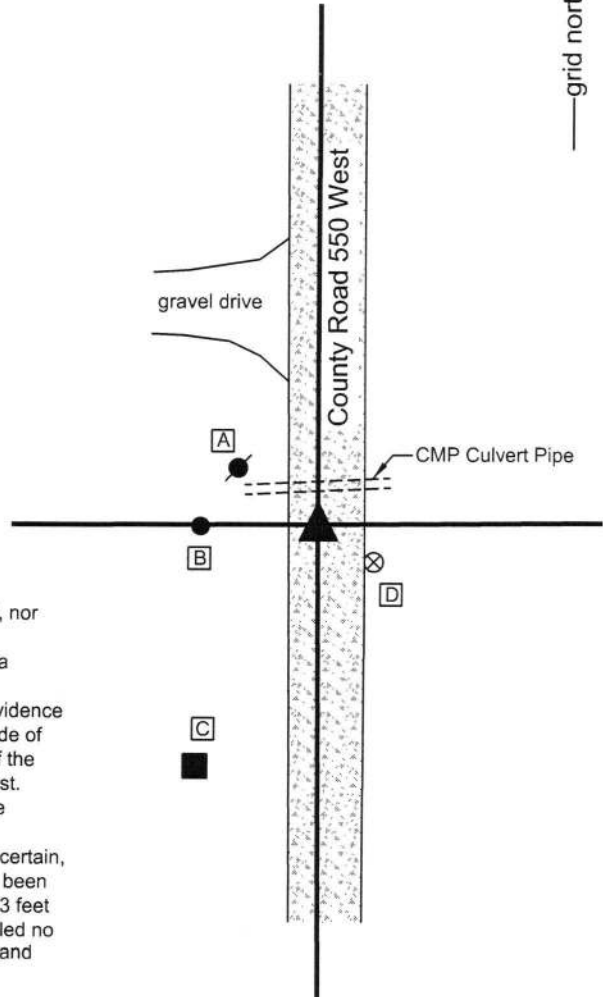


### CORNER WITNESS DETAIL

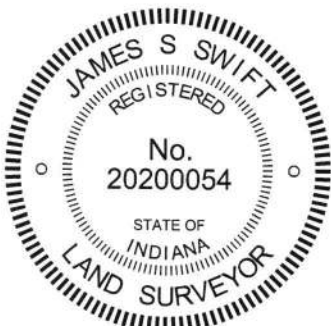
SCALE 1" = 40'  
0' 20' 40'

- A - Mag nail set in S.E. side power pole, 2.5' a.g., 18.9'
- B - 5/8" diameter rebar with plastic cap (Dodge), 2" a.g., 24.2'
- C - Mag nail set in N.E. side wood post, 2' a.g., 54.8'
- D - Boone County witness mark, flush, 14.1'

Boone County witness mark is a 3/8" diameter x 2' long rebar bearing a metal cap stamped "Boone County Witness Point."



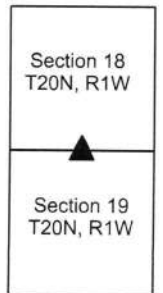
The Harrison monument was set in place of a square-headed spike found. No specific descriptions of this corner were found in the BCS Surveyor's Record, nor were any recent tie cards found referencing this corner. Excavation was performed at this corner on April 14, 2016. Prior to excavation, a square headed spike was found at 2 inches below grade in the gravel road. Excavation revealed no further evidence of the corner. The spike fit with local evidence in the form of the north-south gravel roadway and an old end post on the west side of the road. Per testimony of the landowner who lives adjacent to and northwest of the corner, the existing end post was formerly the terminus of an old fence to the west. The spike also fits with the description for the property adjoining the corner to the northwest. The corner is situated slightly south of a drainage culvert. It is likely, though not certain, that any previously existing evidence of the corner, such as a stone, would have been removed during installation of the culvert pipe. Excavation of an area extending 3 feet north, 4 feet east, 3 feet south and 4 feet west of the square-headed spike revealed no further evidence of the corner. The found spike was held as marking the corner and was replaced with a Harrison monument in the same position. This corner was originally established as a wood post in 1829.



*Kenneth E. Hedge*  
Kenneth E. Hedge, County Surveyor

*James S. Swift*  
James S. Swift, IN LS 20200054  
March 23, 2017

Washington Township



# SECTION CORNER RECORD

NW 950-500

## BOONE COUNTY SURVEYOR'S OFFICE

State Plane grid coordinates NAD83 (CORS96):

North: 1795856.11 East: 3098270.76 (U.S. survey feet)

Type of monument: Harrison, 4" disk 'Section Corner'

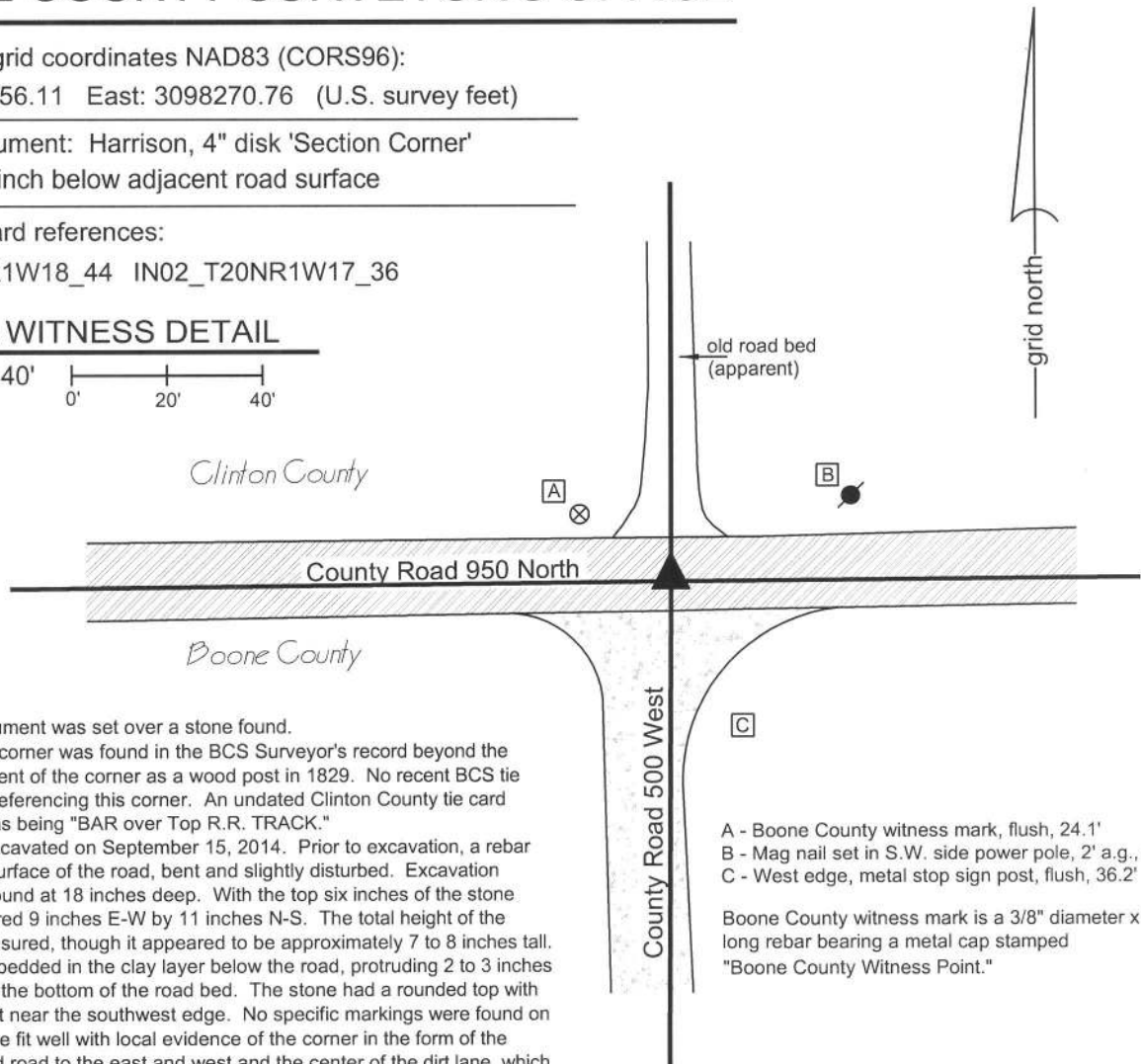
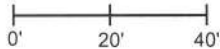
Depth: One inch below adjacent road surface

Indiana tie card references:

IN02\_T20NR1W18\_44 IN02\_T20NR1W17\_36

### CORNER WITNESS DETAIL

SCALE 1" = 40'



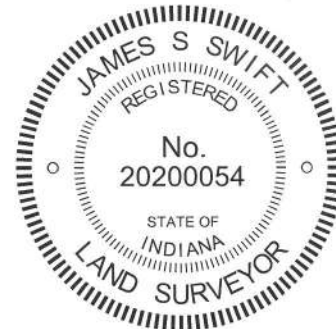
The Harrison monument was set over a stone found.

No mention of this corner was found in the BCS Surveyor's record beyond the original establishment of the corner as a wood post in 1829. No recent BCS tie cards were found referencing this corner. An undated Clinton County tie card shows the corner as being "BAR over Top R.R. TRACK."

This corner was excavated on September 15, 2014. Prior to excavation, a rebar was found at the surface of the road, bent and slightly disturbed. Excavation revealed a stone found at 18 inches deep. With the top six inches of the stone exposed, it measured 9 inches E-W by 11 inches N-S. The total height of the stone was not measured, though it appeared to be approximately 7 to 8 inches tall. The stone was embedded in the clay layer below the road, protruding 2 to 3 inches out of the clay into the bottom of the road bed. The stone had a rounded top with a distinct high point near the southwest edge. No specific markings were found on the rock. The stone fit well with local evidence of the corner in the form of the center of the paved road to the east and west and the center of the dirt lane, which had been a county road prior to the construction of Interstate 65, to the north. The stone was east of the center of the county road to the south in the immediate vicinity of the intersection but fit well with the longer centerline to the south. The position, depth, being in the clay layer below the road, and orientation, being oriented in cardinal directions, of the stone matches the characteristics of other stone found marking corners throughout the county. The fact that the stone bore no markings and was not particularly vertical is not surprising, given the lack of mention of the corner in the BCS records and the presumption that it was most likely set by early pioneer landowners, perhaps in place of the original wood post, rather than the County Surveyor. The stone was accepted as the best available evidence of the corner and held as marking such. The stone was left in place and a Harrison monument was set over the top, high point of the stone. The rebar, removed during excavation, had been 1.5 feet north and 1.2 feet west of the point held as the corner.

- A - Boone County witness mark, flush, 24.1'
- B - Mag nail set in S.W. side power pole, 2' a.g., 40.2'
- C - West edge, metal stop sign post, flush, 36.2'

Boone County witness mark is a 3/8" diameter x 2' long rebar bearing a metal cap stamped "Boone County Witness Point."

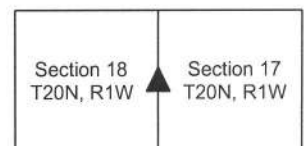


*Kenneth E. Hedge*  
Kenneth E. Hedge, County Surveyor

*James S. Swift*  
James S. Swift, IN LS 20200054

Jackson Twp  
Clinton County  
Washington Twp  
Boone County

March 27, 2015



PHOTOGRAPHIC DOCUMENTATION

Date of photography: September 15, 2014

The stone as originally found.



The stone more fully exposed.



View from the north, looking across the stone and south along County Road 500 West.



View from the west, looking across the stone and east along County Road 950 North toward the Interstate 65 overpass.



For details and documentation, refer to related sheet "Section Corner Record."

# SECTION CORNER RECORD

## BOONE COUNTY SURVEYOR'S OFFICE

NW 950-600

State Plane grid coordinates NAD83 (CORS96):

Corner 1: North: 1795848.78 East: 3093058.11 (U.S. survey feet)

Corner 2: North: 1795805.88 East: 3093057.50 (U.S. survey feet)

Type of monument, Corner 1: Harrison, 4" disk 'Section Corner'

Type of monument, Corner 2: Stone

Depth: flush with adjacent ground (both corners)

Indiana tie card references: IN02\_T20NR2W13\_44 IN02\_T20NR1W18\_36

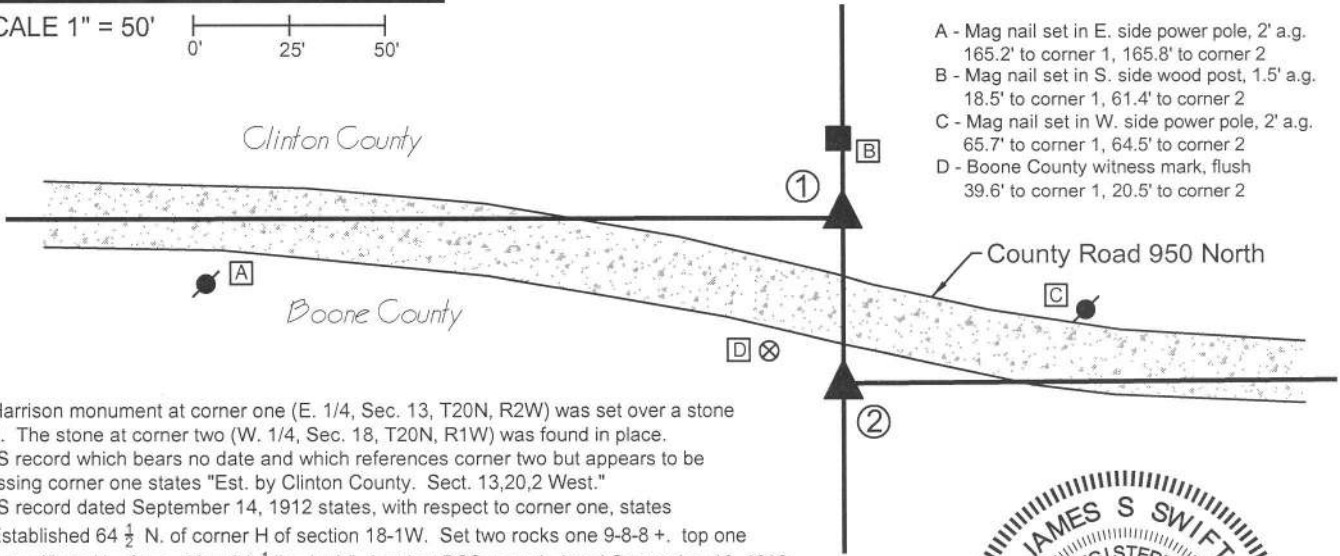
### CORNER WITNESS DETAIL

SCALE 1" = 50'

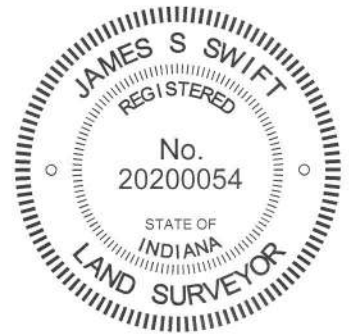
- ① E. 1/4 corner, Section 13  
T 20 N, R 2 W  
Harrison set over record lower stone
- ② W. 1/4 corner, Section 18  
T 20 N, R 1 W  
Top, high point, existing stone (flush)  
Distance between monuments = 42.9'



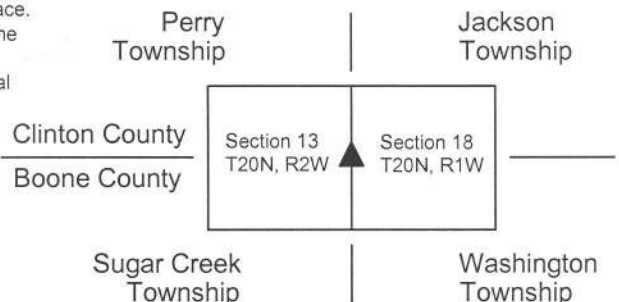
- A - Mag nail set in E. side power pole, 2' a.g.  
165.2' to corner 1, 165.8' to corner 2
- B - Mag nail set in S. side wood post, 1.5' a.g.  
18.5' to corner 1, 61.4' to corner 2
- C - Mag nail set in W. side power pole, 2' a.g.  
65.7' to corner 1, 64.5' to corner 2
- D - Boone County witness mark, flush  
39.6' to corner 1, 20.5' to corner 2



The Harrison monument at corner one (E. 1/4, Sec. 13, T20N, R2W) was set over a stone found. The stone at corner two (W. 1/4, Sec. 18, T20N, R1W) was found in place. A BCS record which bears no date and which references corner two but appears to be discussing corner one states "Est. by Clinton County. Sect. 13,20,2 West." A BCS record dated September 14, 1912 states, with respect to corner one, states "Re-Established 64 1/2 N. of corner H of section 18-1W. Set two rocks one 9-8-8 +. top one 14-13-7 + (D. to H. of sec. 18 is 64 1/2 lks. lap)." Another BCS record, dated September 16, 1912 but which also references the date November 11, 1889, and specifically discusses corner one, states "Some parties doubting the correctness and legality of this corner as established above and desiring joint action with the Surveyor of Clinton County, I met with Mr. Hill, C.S. of C.C. We measured the east line of the section and found D as above to be mid-way between E & C. (2645 feet from each) but 12 feet East of a straight line. H of section 18 having been established by Clinton Surveyor, there being a rock at that point, with roots to agree with witnesses and D having been set the proper distance North we agree that the same be taken as correct. The corners E & d, indicating the same point (very nearly)." Stone were found at both corners during the Spring of 2014. The stone at corner two (corner H, section 13) is flush with the surface with a distinct high point. The stone at corner one was found at approximately 8 inches deep in a hole with a piece of metal above it and a surveyor's lathe next to it. Clearly this stone has been found in recent years by private surveyors. Excavation on October 10, 2014 yielded the observation that the stone at corner one is actually the bottom stone described in the 1912 record, 9 inches tall by 8 inches E-W and N-W with a clearly etched "+" mark on top. Sufficient excavation was performed at corner two to demonstrate that this stone is very large with sloping sides. The small part of the stone visible at the surface represents a distinct, generally square shaped high point of the rock. The 1912 record calls for an offset (referred to as lap) of 64.5 links between the corners, which is the average of the record federal offsets at the section corners to the north and south. This distance equates to 42.57 feet. The actual distance measured between the mark on the top of the stone at corner one and the center of the top of corner 2 is 42.9 feet. The stones were accepted as marking the respective corners. Both stones were left in place. A Harrison monument was set over the etched "+" on the of the stone at corner one and the stone at corner two was left undisturbed. Corner one was set as a wood post in 1819. Corner two was not set on the original federal survey.



*James S. Swift*  
James S. Swift, IN LS 20200054  
March 27, 2015



*Kenneth E. Hedge*  
Kenneth E. Hedge, County Surveyor

PHOTOGRAPHIC DOCUMENTATION

Date of photography: September 20 and October 10, 2014

The stone at corner one as originally found.



The stone at corner one, washed, showing mark.



The stone at corner one prior to being encased in concrete with a Harrison monument set above.



The stone at corner two as originally found, showing just the top of a large stone.



View from above corner two, looking towards corner one, marked with a shovel handle



View from above corner one, looking toward the post and brush line to the north



For details and documentation, refer to related sheet "Section Corner Record."