

SECTION CORNER RECORD

NE-300-600

BOONE COUNTY SURVEYOR'S OFFICE

State Plane grid coordinates NAD83 (NSRS 2007):

Corner 1: North: 1762016.52 East: 3156220.05 (U.S. survey feet)

Corner 2: North: 1761973.59 East: 3156220.35 (U.S. survey feet)

Corners 1 & 2:

Type of monument: Harrison, 4" disk 'Section Corner'

Depth: One inch below adjacent road surface

Indiana tie card references:

IN02_T19NR1E13_80

IN02_T19NR1E24_08

IN02_T19NR2E18_72

IN02_T19NR2E19_00

A - Boone County witness mark, flush,
28.11' to corner 1, 68.49' to corner 2.

B - Mag nail set in N. side wood post, 1' a.g.,
46.22' to corner 1, 19.39' to corner 2.

C - Boone County witness mark, flush,
58.99' to corner 1, 17.82' to corner 2.

D - Mag nail set in N. side power pole, 2' a.g.,
41.07' to corner 1, 17.70' to corner 2.

S.E. Corner, Section 13

N.E. Corner, Section 14

T 19 N, R 1 E ①

CORNER WITNESS DETAIL

SCALE 1" = 30'

0' 15' 30'

grid north

The harrison monuments were set in place of railroad rails found.

A BCS record of November 23, 1871 states "Reestablished by lap 66 lk south from corner Sections 13 & 24 from trees. Set rock 17, 11 by 6 + on E. side." A BCS tied card dated October 14, 1971 states Stone found, RRR put in." BCS tie cards dated July 28, 2005 show both corners as marked by harrison monuments with no documentation of source.

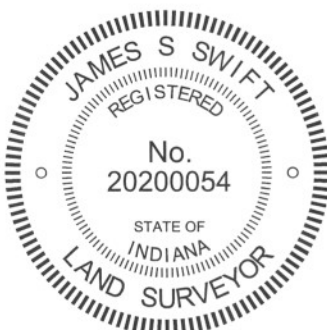
Corner 1 was excavated on June 3, 2010. Corner 2 was excavated on June 18, 2010. Prior to excavation, harrison monuments were found at both corners.

Excavation of corner 1 revealed a railroad rail found at 7 inches deep, directly below the harrison monument. No other evidence was found and it was accepted that the rail was set in place of the stone found in 1971. Excavation of corner 2 revealed a railroad rail found at 10 inches deep, 0.1' east of the harrison. No other evidence was found and it was accepted that the rail at corner 2 was also set in place of the stone found in 1971. It is not specifically known whether stones were found at both corners in 1971, but the tie card shows ties to both corners. In any case, the rails were held as the best evidence of the position of the corners. The harrison monument at corner 1 was set in place of the rail. The harrison monument was set at the same north-south position as the rail, but was set on the line between corner 1 and the standard corner to the south, approximately 0.4 feet west of the rail. It is noted that the rails, as measured from the top center of each, were 42.92 feet apart, which distance matches the 2005 tie cards for the harrison monuments. The 1971 tie card shows a distance of 43.2 separating the corners. The record closing distance of 66 links is equal to 43.56 feet. The physical distance between the found rails was held as the closing distance, or "lap" as referred to in the 1871 record.

Corner 1 was originally established as a wood post in July, 1819. Corner 2 was originally established as a wood post in July, 1821.

Distance between monuments:
42.92'

② S.W. Corner, Section 18
N.W. Corner, Section 19
T 19 N, R 2 E



Kenneth E. Hedge
Kenneth E. Hedge, County Surveyor

James S. Swift
James S. Swift, IN LS 20200054
July 25, 2011

Center Twp	Marion Twp
Section 13 T19N, R1E	Section 18 T19N, R2E
Section 24 T19N, R1E	Section 19 T19N, R2E

SECTION CORNER RECORD

BOONE COUNTY SURVEYOR'S OFFICE

NE 300-650

State Plane grid coordinates NAD83 (NSRS 2007):

North: 1762026.71 East: 3158981.48 (U.S. survey feet)

Type of monument: Harrison, 4" disk 'Section Corner'

Depth: three inches above adjacent grade

Indiana tie card references:

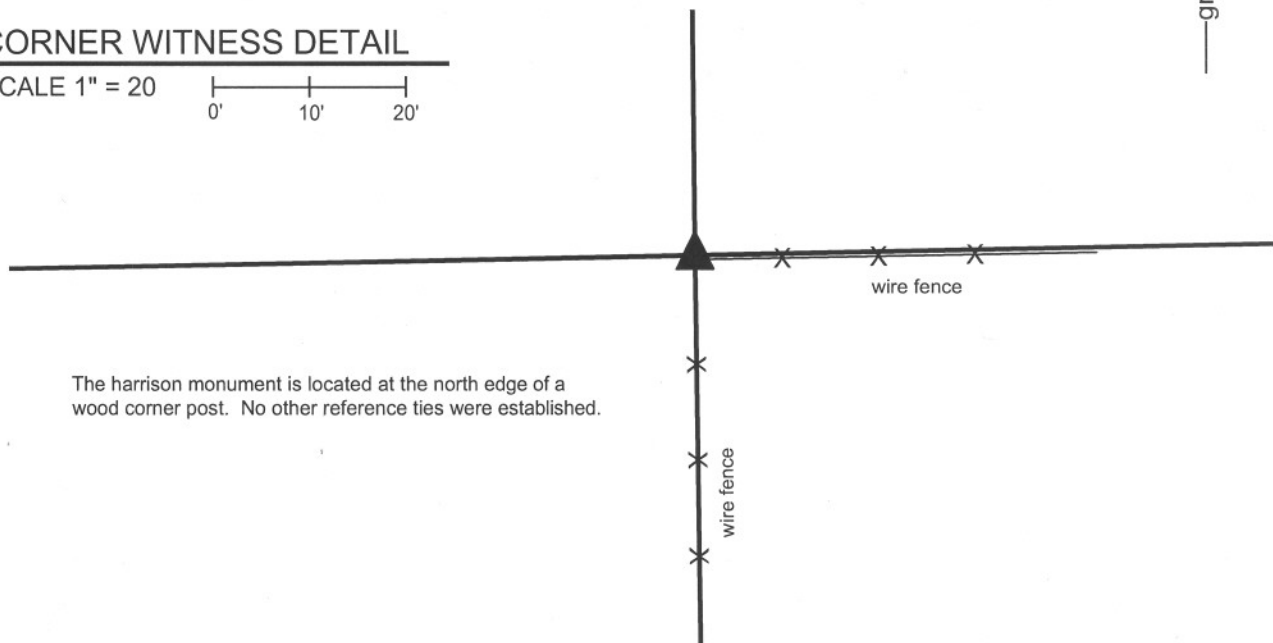
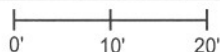
IN02_T19NR2E18_76

IN02_T19NR2E19_04



CORNER WITNESS DETAIL

SCALE 1" = 20'



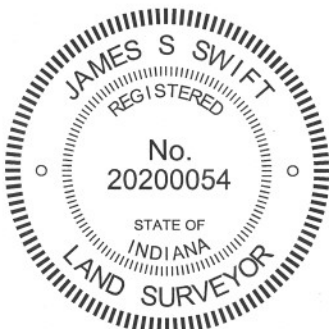
The Harrison monument is located at the north edge of a wood corner post. No other reference ties were established.

The Harrison monument was set in place of a stone found.

A BCS record of November 23, 1871 states "Reestablished from Oak tree and stake. Set a Rock 13.11.6 marked +." No recent BCS tie cards were found referencing this corner.

This corner was excavated on October 12, 2011. The record stone, as described in the 1871 record, was found at the north edge of a wood corner post. Neither the post nor the fencing attached to it appears to be old. The stone was not vertical as found, and appears to have fallen towards the south. As found, the etched + on the stone was towards the south edge of the stone. When the stone was stood up, hence the south edge, as found, leaned north until the etched + was on top, the stone matched the characteristics of other found stones, being vertical and oriented in cardinal directions, with the etched + being on the top center. It is noted that many stones have the etched + on a side, but the character of this particular rock was such that it appeared that the + would have been placed on the top. As noted above, the adjacent post does not appear to be old. An old corner post was found nearby, lying on the ground. The conclusion reached while investigating the physical situation at the corner was that the stone was likely disturbed while the corner post was being replaced. The stone, being on the north edge of the hole in which the new post was placed, may have fallen over towards the south. It is not known whether this conclusion is correct, but it is known that the record stone from 1871 was found at the north edge of the post. The position of the corner was held as the position of the found stone. As stood up the etched + was in the same approximate position as the top of the stone as originally found. Uncertainties of several inches may be associated the position and orientation of the stone. The stone measures 13 inches by 11 inches by 6 inches, as stated in the 1871 record. The Harrison monument was set over the etched + mark on the stone, as stood up.

This corner was originally established as a wood post in July, 1821.



Kenneth E. Hedge
Kenneth E. Hedge, County Surveyor

James S. Swift
James S. Swift, IN LS 20200054
March 1, 2012

Marion Twp

Section 18
T19N, R2E

Section 19
T19N, R2E

PHOTOGRAPHIC DOCUMENTATION

Date of photography: October 12 & 14, 2011

View of the stone as first exposed.



The stone removed from the hole, stood vertical.



Same as above, view from opposite direction.



The harrison monument set over the stone.



The stone placed back in the hole, vertical.



For details and documentation, refer to related sheet "Section Corner Record."

SECTION CORNER RECORD

BOONE COUNTY SURVEYOR'S OFFICE

NE 350-600

State Plane grid coordinates NAD83 (NSRS 2007):

North: 1764683.48 East: 3156175.82 (U.S. survey feet) (Corner 1 only)

Type of monument: Harrison, 4" disk 'Section Corner' (Corner 1 only)

Depth: One inch below adjacent road surface

Indiana tie card references:

IN02_T19NR1E13_44

IN02_T19NR2E18_36

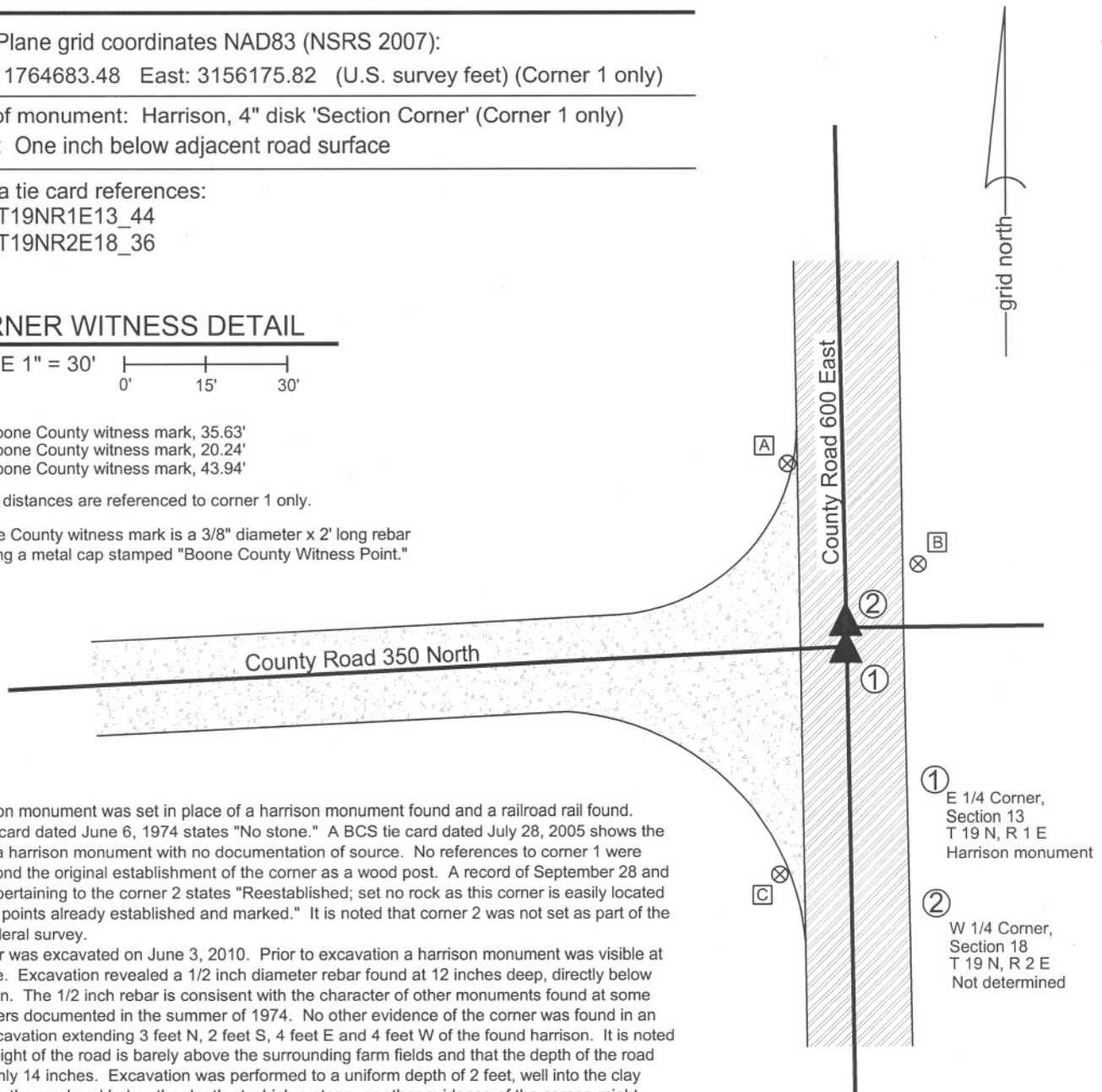
CORNER WITNESS DETAIL

SCALE 1" = 30'

- A - Boone County witness mark, 35.63'
- A - Boone County witness mark, 20.24'
- A - Boone County witness mark, 43.94'

All tie distances are referenced to corner 1 only.

Boone County witness mark is a 3/8" diameter x 2' long rebar bearing a metal cap stamped "Boone County Witness Point."



The harrison monument was set in place of a harrison monument found and a railroad rail found. A BCS tie card dated June 6, 1974 states "No stone." A BCS tie card dated July 28, 2005 shows the corner as a harrison monument with no documentation of source. No references to corner 1 were found beyond the original establishment of the corner as a wood post. A record of September 28 and 29, 1910, pertaining to the corner 2 states "Reestablished; set no rock as this corner is easily located from other points already established and marked." It is noted that corner 2 was not set as part of the original federal survey.

This corner was excavated on June 3, 2010. Prior to excavation a harrison monument was visible at the surface. Excavation revealed a 1/2 inch diameter rebar found at 12 inches deep, directly below the harrison. The 1/2 inch rebar is consistent with the character of other monuments found at some other corners documented in the summer of 1974. No other evidence of the corner was found in an area of excavation extending 3 feet N, 2 feet S, 4 feet E and 4 feet W of the found harrison. It is noted that the height of the road is barely above the surrounding farm fields and that the depth of the road bed was only 14 inches. Excavation was performed to a uniform depth of 2 feet, well into the clay layer below the road and below the depth at which a stone, or other evidence of the corner, might reasonably be expected to be found. A harrison monument was set in place of the harrison monument and railroad rail found before and during excavation. The position of corner 2 was not firmly established.



Kenneth E. Hedge
Kenneth E. Hedge, County Surveyor

James S. Swift
James S. Swift, IN LS 20200054
July 25, 2011

Center Twp	Union Twp
Section 13 T19N, R1E	Section 18 T19N, R2E

SECTION CORNER RECORD

BOONE COUNTY SURVEYOR'S OFFICE

NE 350-700

State Plane grid coordinates NAD83 (CORS96):

North: 1764732.19 East: 3161601.08 (U.S. survey feet)

Type of monument: Harrison, 4" disk 'Section Corner'

Depth: six inches below adjacent gravel road surface

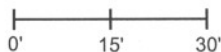
Indiana tie card references:

IN02_T19NR2E17_36

IN02_T19NR2E18_44

CORNER WITNESS DETAIL

SCALE 1" = 30'



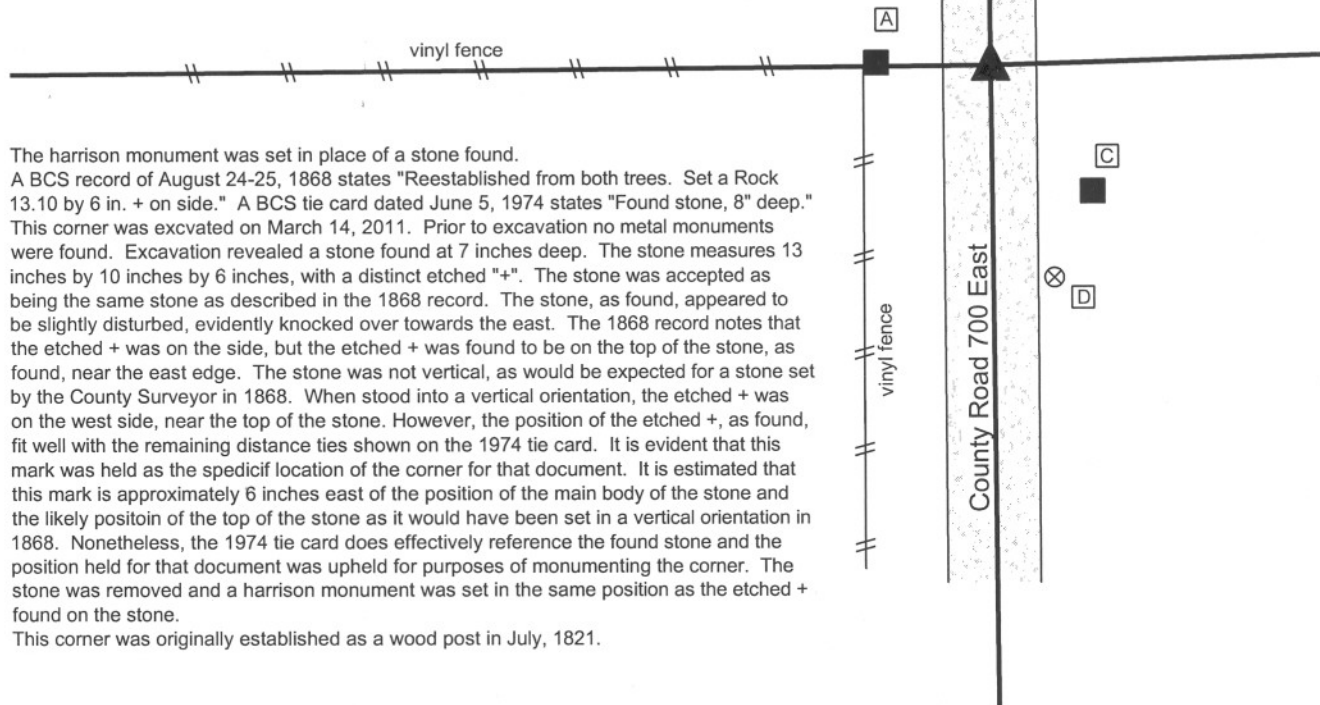
A - Mag nail set in E. side wood post, 3 in. a.g., 16.06'

B - Boone County witness mark, flush, 28.34'

C - Mag nail set in W. side power pole, 2' a.g., 23.85'

D - Boone County witness mark, flush, 34.64'

Boone County witness mark is a 3/8" diameter x 2' long rebar bearing a metal cap stamped "Boone County Witness Point."

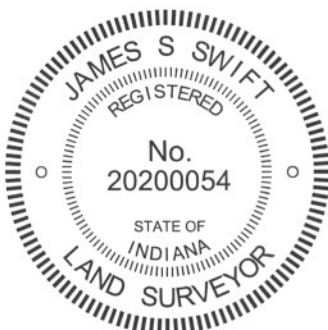


The harrison monument was set in place of a stone found.

A BCS record of August 24-25, 1868 states "Reestablished from both trees. Set a Rock 13.10 by 6 in. + on side." A BCS tie card dated June 5, 1974 states "Found stone, 8" deep."

This corner was excavated on March 14, 2011. Prior to excavation no metal monuments were found. Excavation revealed a stone found at 7 inches deep. The stone measures 13 inches by 10 inches by 6 inches, with a distinct etched "+". The stone was accepted as being the same stone as described in the 1868 record. The stone, as found, appeared to be slightly disturbed, evidently knocked over towards the east. The 1868 record notes that the etched + was on the side, but the etched + was found to be on the top of the stone, as found, near the east edge. The stone was not vertical, as would be expected for a stone set by the County Surveyor in 1868. When stood into a vertical orientation, the etched + was on the west side, near the top of the stone. However, the position of the etched +, as found, fit well with the remaining distance ties shown on the 1974 tie card. It is evident that this mark was held as the specific location of the corner for that document. It is estimated that this mark is approximately 6 inches east of the position of the main body of the stone and the likely position of the top of the stone as it would have been set in a vertical orientation in 1868. Nonetheless, the 1974 tie card does effectively reference the found stone and the position held for that document was upheld for purposes of monumenting the corner. The stone was removed and a harrison monument was set in the same position as the etched + found on the stone.

This corner was originally established as a wood post in July, 1821.



Kenneth E. Hedge
Kenneth E. Hedge, County Surveyor

James S. Swift
James S. Swift, IN LS 20200054
March 1, 2012

Marion Township

Section 18 T19N, R2E	Section 17 T19N, R2E
-------------------------	-------------------------

PHOTOGRAPHIC DOCUMENTATION

Date of photography: March 14, 2011

View of the stone as first exposed.



View of the stone fully exposed but not moved.



View from the south looking across the stone and north along County Road 700 East.



View from the east showing the stone and the post on the west side of the road.



For details and documentation, refer to related sheet "Section Corner Record."

SECTION CORNER RECORD

NE 400-600

BOONE COUNTY SURVEYOR'S OFFICE

State Plane grid coordinates NAD83 (NSRS 2007):

Corner 1: North: 1767343.74 East: 3156123.38 (U.S. survey feet)

Corner 2: North: 1767394.12 East: 3156121.99 (U.S. survey feet)

Corner 1:

Type of monument: Harrison, 4" disk 'Section Corner'

Depth: One inch below adjacent road surface

Corner 2:

Type of monument: Harrison, 4" disk 'Section Corner'

Depth: One inch below adjacent road surface

Indiana tie card references:

IN02_T19NR1E12_80 IN02_T19NR1E13_08

IN02_T19NR2E07_72 IN02_T19NR2E18_00

A - Mag nail set in S. side power pole, 2' a.g., 98.81' to corner 1, 49.84' to corner 2.

B - Mag nail set in W. side power pole, 2' a.g., 51.09' to corner 1, 38.56' to corner 2.

C - Boone County witness mark, flush, 23.64' to corner 1, 35.13' to corner 2.

D - Boone County witness mark, flush, 34.16' to corner 1, 70.56' to corner 2.

Boone County witness mark is a 3/8" diameter x 2' long rebar bearing a metal cap stamped "Boone County Witness Point."

A harrison monument was set in place of a stone at corner 1 and over a stone at corner 2.

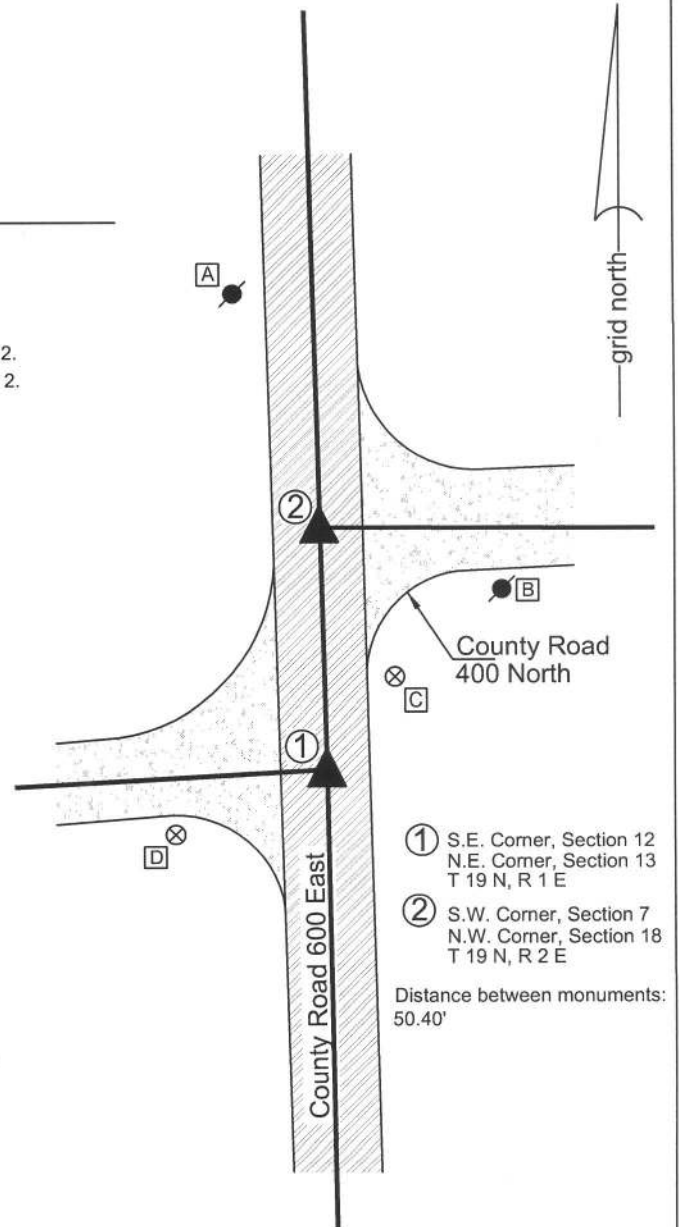
A BCS record of November 7, 1872 pertaining to corner 2 states "Reestablished from the trees 75 lks North of corner Sects 12 & 13. Set a Rock 22.16 by 10 marked +." A BCS tie card dated July 28, 2005 shows both corners as harrison monuments with no documentation of source.

These corners were excavated on June 16, 2010. Prior to excavation, harrison monuments were visible at the surface of the road. Corner 2 was excavated first. Excavation revealed no further evidence directly below the harrison monument, but the record stone described in 1872 was found slightly south and west of the harrison. The stone is embedded in the clay layer below the road at 17 inches deep and measures 22 inches tall by 17 inches N-S by 10 inches E-W with a clearly visible mark etched on the top near the east side of the stone. The mark appears to be a "+". The E-W part of the "+" is fully visible but only the N section of the N-S part is visible. While the stone at corner 2 was still exposed, corner 1 was excavated. Excavation at this corner revealed a stone found at distance slightly longer than the reported 75 links. This stone was also embedded in the clay layer below the road. The stone was removed and measured, being 4 inches tall by 6 inches E-W by 9 inches N-S. The harrison monument at corner 2 was set directly over the etched mark on the top of the stone. The harrison monument at corner 1 was set in place of the approximate top, center of the position of the stone and specifically on the range line as determined by corner 2. Corner 1 is 0.3 foot north of the position of the former harrison monument and corner 2 is 0.7 feet south and 0.3 feet west of the position of the former harrison monument. It is noted that the original recorded closing distance between the corners is 77 links (50.8'), the 1872 record reports 75 links (49.5') links and the distance measured is 50.40 feet. Corner 1 was originally established as a wood post in 1819. Corner 2 was originally established as a wood post in 1821.

CORNER WITNESS DETAIL

SCALE 1" = 40'

0' 20' 40'



- ① S.E. Corner, Section 12
N.E. Corner, Section 13
T 19 N, R 1 E
- ② S.W. Corner, Section 7
N.W. Corner, Section 18
T 19 N, R 2 E

Distance between monuments:
50.40'



Kenneth E. Hedge
Kenneth E. Hedge, County Surveyor

James S. Swift
James S. Swift, IN LS 20200054
July 25, 2011

	Clinton Twp	Marion Twp
Clinton Twp	Section 12 T19N, R1E	Section 7 T19N, R2E
Center Twp	Section 13 T19N, R1E	Section 18 T19N, R2E

PHOTOGRAPHIC DOCUMENTATION

Date of photography: June 16, 2010

The stone at the closing corner (corner 2) from above and west.



The stone at corner 2 from above and south.



View from the west, looking across the stone at corner 2 and east along County Road 400 North.



The stone at corner 2 from above.
Note the etched mark on the top of the stone.



The stone at the standard corner (corner 1) from above and east.



For details and documentation, refer to related sheet "Section Corner Record."

SECTION CORNER RECORD

BOONE COUNTY SURVEYOR'S OFFICE

NE 400-650

State Plane grid coordinates NAD83 (CORS96):

North: 1767385.59 East: 3158931.44 (U.S. survey feet)

Type of monument: Harrison, 4" disk 'Section Corner'

Depth: six inches below adjacent gravel road surface

Indiana tie card references:

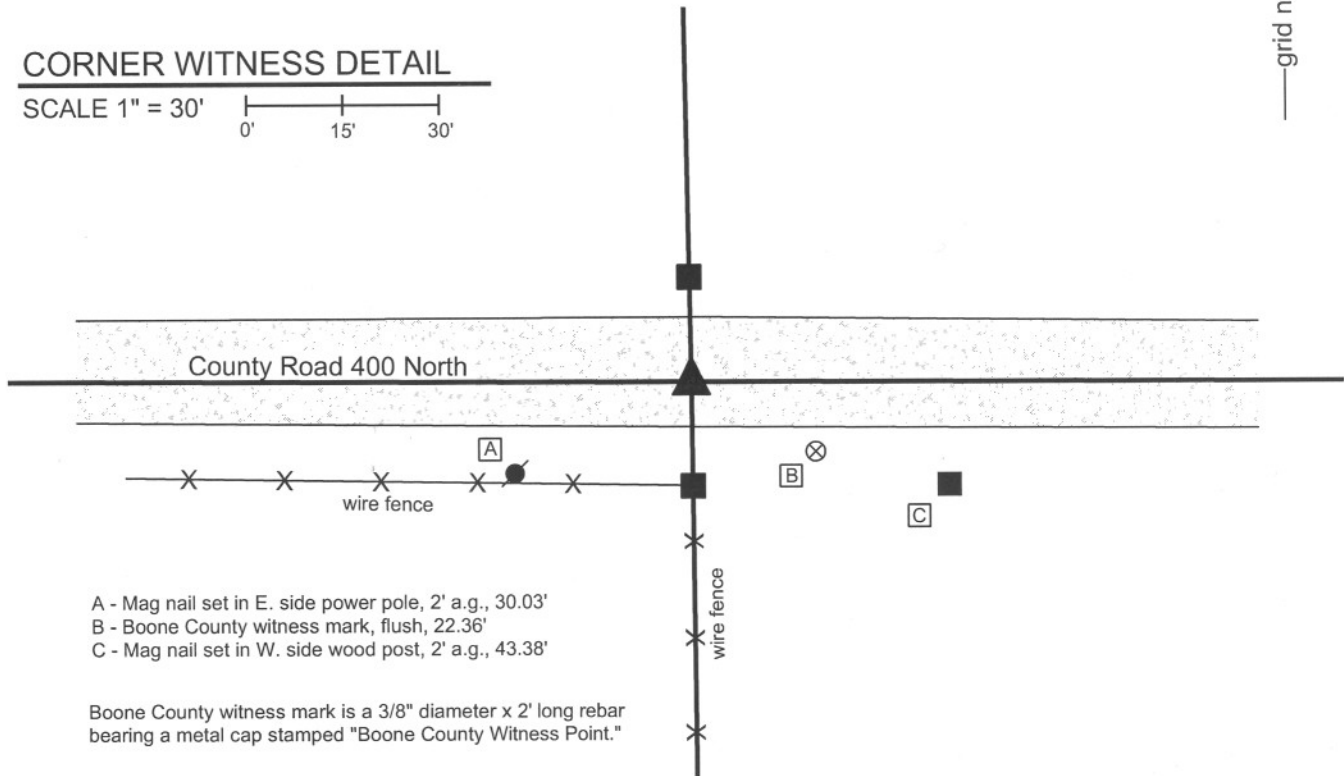
IN02_T19NR2E07_76

IN02_T19NR2E18_04

CORNER WITNESS DETAIL

SCALE 1" = 30'

0' 15' 30'



A - Mag nail set in E. side power pole, 2' a.g., 30.03'

B - Boone County witness mark, flush, 22.36'

C - Mag nail set in W. side wood post, 2' a.g., 43.38'

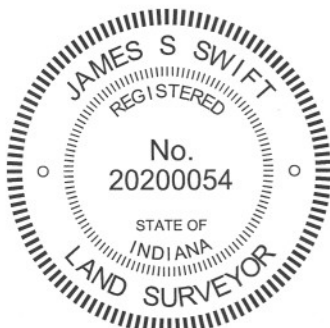
Boone County witness mark is a 3/8" diameter x 2' long rebar bearing a metal cap stamped "Boone County Witness Point."

The harrison monument was set in place of a stone found.

A BCS record of April 22, 1895 states "Established Rock 24x12x12 marked +." A BCS tie card dated June 13, 1974 states "no stone found."

This corner was excavated on March 11, 2011. Prior to excavation, a 1/2 inch diameter rebar was found at 2 inches deep. Excavation revealed a stone found at 9 inches deep. The stone had a clearly visible etched + on the top. The stone measured 17 inches tall by 12 inches N-S by 10 inches E-W. The stone fit the characteristics of stones set by the County Surveyor, being vertical, oriented in cardinal directions, embedded in the clay layer below the road. The etched + was so distinct as to leave nothing to the imagination of the field surveyor about where the specific corner was. The stone does not match the dimensions of the 1895 record. Excavation revealed no further evidence. The stone fit with local evidence, being in the center of the E-W county road and approximately 1 rod from each of the wood end posts on the north and south side of the road. The stone was held as marking the corner. The stone was removed and a harrison monument was set in the position of the etched +. The rebar, removed during excavation, had been 1.1 foot north and 0.4 foot east of the etched + on the stone.

This corner was originally established as a wood post in July, 1821.



Kenneth E. Hedge
Kenneth E. Hedge, County Surveyor

James S. Swift
James S. Swift, IN LS 20200054
March 1, 2012

Marion Twp

Section 7
T19N, R2E

Section 18
T19N, R2E

PHOTOGRAPHIC DOCUMENTATION

Date of photography: March 11, 2011

The top of the stone as first exposed.
Note the distinct etched "+" mark on the top.



The stone after removal from the road bed.



For details and documentation, refer to
related sheet "Section Corner Record."

SECTION CORNER RECORD

NE 400-700

BOONE COUNTY SURVEYOR'S OFFICE

State Plane grid coordinates NAD83 (NSRS 2007):

North: 1767379.15 East: 3161576.80 (U.S. survey feet)

Type of monument: Harrison, 4" disk 'Section Corner'

Depth: Six inches below the surface of the gravel road.

Indiana tie card references:

IN02_T19NR2E07_80 IN02_T19NR2E08_72

IN02_T19NR2E18_08 IN02_T19NR2E17_00

CORNER WITNESS DETAIL

SCALE 1" = 40'

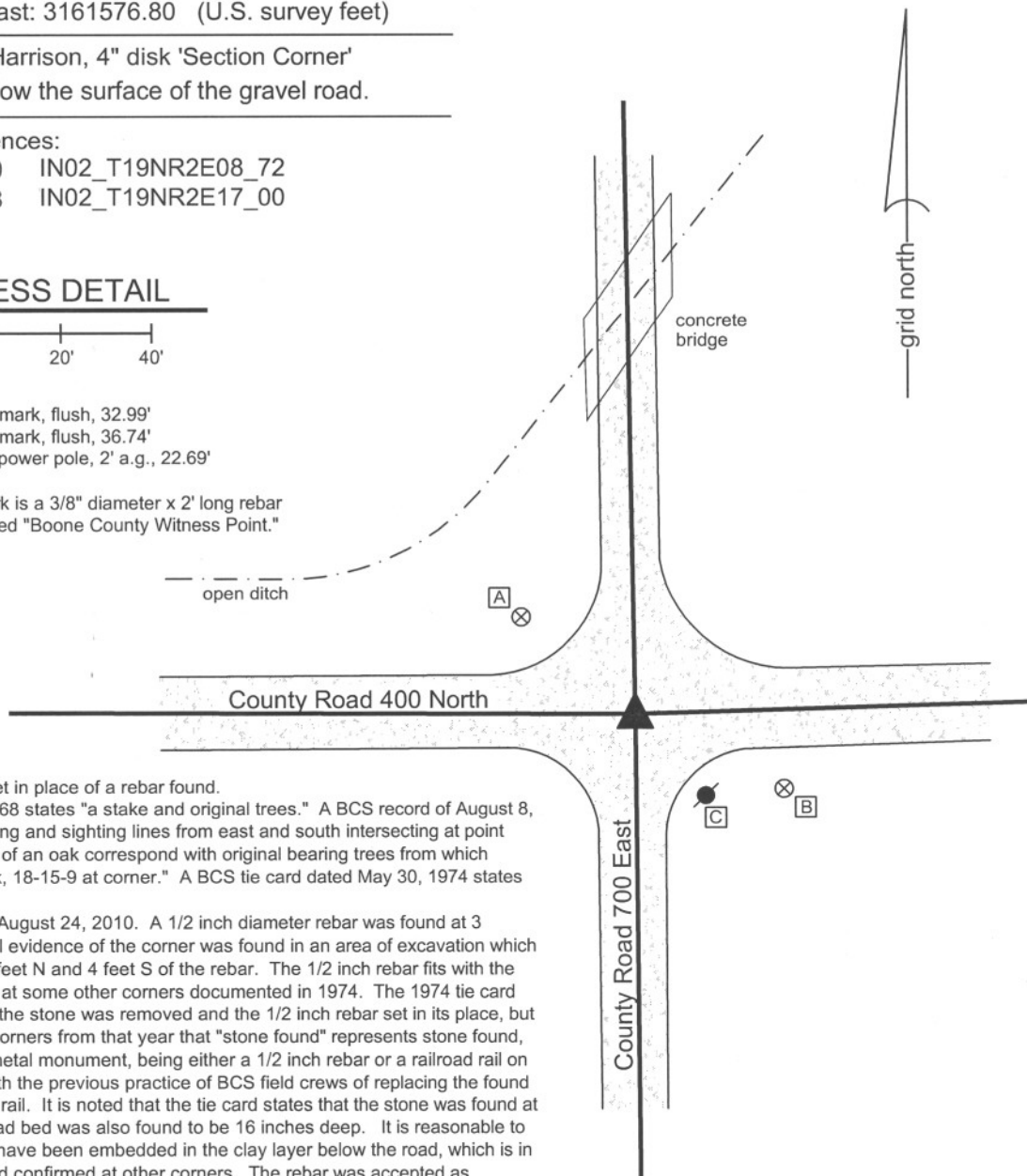
0' 20' 40'

A - Boone County witness mark, flush, 32.99'

B - Boone County witness mark, flush, 36.74'

C - Mag nail set in N. side power pole, 2' a.g., 22.69'

Boone County witness mark is a 3/8" diameter x 2' long rebar bearing a metal cap stamped "Boone County Witness Point."



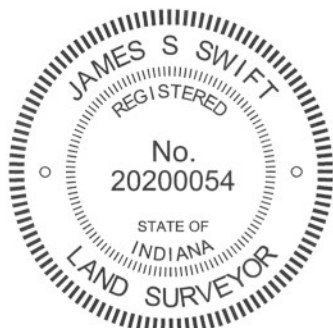
The harrison monument was set in place of a rebar found.

A BCS record of August 27, 1868 states "a stake and original trees." A BCS record of August 8, 1912 states "Found by measuring and sighting lines from east and south intersecting at point where an Elm stump and roots of an oak correspond with original bearing trees from which re-established corner. Set rock, 18-15-9 at corner." A BCS tie card dated May 30, 1974 states "Stone found, 16" deep."

This corner was excavated on August 24, 2010. A 1/2 inch diameter rebar was found at 3 inches deep. No other physical evidence of the corner was found in an area of excavation which extended 6 feet W, 4 feet E, 4 feet N and 4 feet S of the rebar. The 1/2 inch rebar fits with the character of monuments found at some other corners documented in 1974. The 1974 tie card does not specifically state that the stone was removed and the 1/2 inch rebar set in its place, but it has been observed at other corners from that year that "stone found" represents stone found, removed and replaced with a metal monument, being either a 1/2 inch rebar or a railroad rail on end. This is also in keeping with the previous practice of BCS field crews of replacing the found stone with a section of railroad rail. It is noted that the tie card states that the stone was found at 16 inches deep and that the road bed was also found to be 16 inches deep. It is reasonable to conclude that the stone would have been embedded in the clay layer below the road, which is in character with stones found and confirmed at other corners. The rebar was accepted as providing the best available evidence of the stone found in 1974 and held as marking the corner.

The harrison monument was set in place of the found rebar.

This corner was originally established as a wood post in July, 1821.



Kenneth E. Hedge
Kenneth E. Hedge, County Surveyor

James S. Swift
James S. Swift, IN LS 20200054
July 25, 2011

Marion Township

Section 7 T19N, R2E	Section 8 T19N, R2E
Section 18 T19N, R2E	Section 17 T19N, R2E