

SECTION CORNER RECORD

SW 200-500

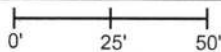
BOONE COUNTY SURVEYOR'S OFFICE

State Plane grid coordinates NAD83 (2011):
North: 1734788.82 East: 3098304.45 (U.S. survey feet)

Type of monument: Harrison, 4" disk 'Section Corner'
Depth: One inch below adjacent road surface

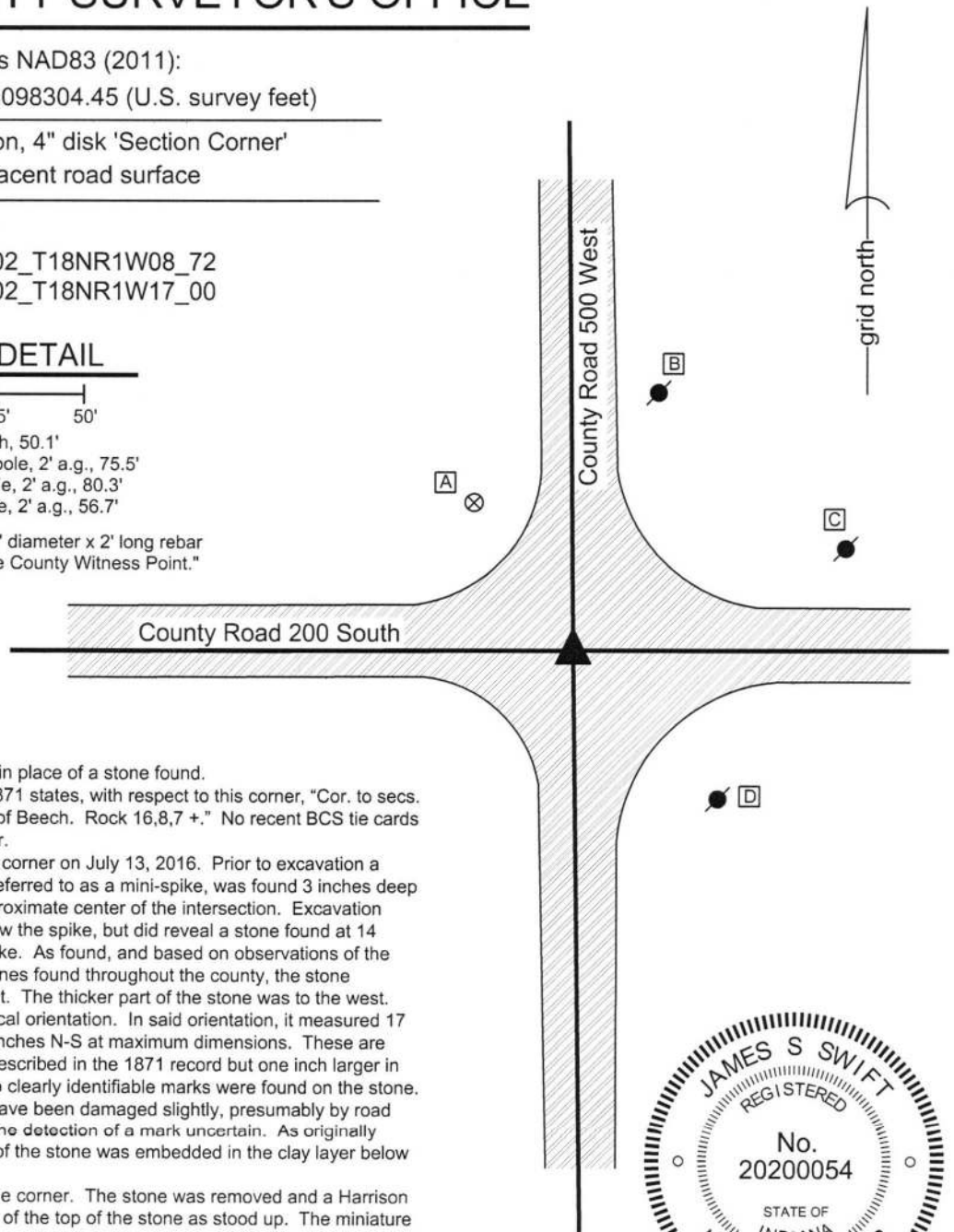
Indiana tie card references:
IN02_T18NR1W07_80 IN02_T18NR1W08_72
IN02_T18NR1W18_08 IN02_T18NR1W17_00

CORNER WITNESS DETAIL

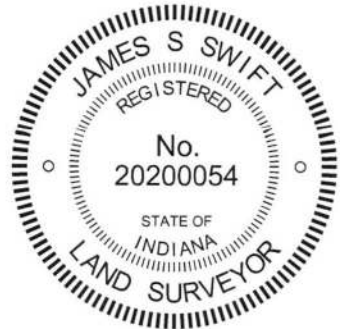
SCALE 1" = 50' 

- A - Boone County witness mark, flush, 50.1'
- B - Mag nail set in S.W. side power pole, 2' a.g., 75.5'
- C - Mag nail set in W. side power pole, 2' a.g., 80.3'
- D - Mag nail set in N. side power pole, 2' a.g., 56.7'

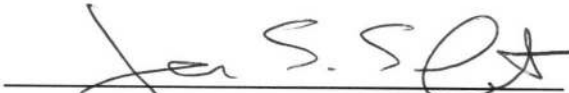
Boone County witness mark is a 3/8" diameter x 2' long rebar bearing a metal cap stamped "Boone County Witness Point."



The Harrison monument was set in place of a stone found.
 A BCS record dated March 27, 1871 states, with respect to this corner, "Cor. to secs. 7,8,17 and 18. Reest from roots of Beech. Rock 16,8,7 +." No recent BCS tie cards were found referencing the corner.
 Excavation was performed at this corner on July 13, 2016. Prior to excavation a small railroad spike, sometimes referred to as a mini-spike, was found 3 inches deep in a hole in the asphalt at the approximate center of the intersection. Excavation revealed no further evidence below the spike, but did reveal a stone found at 14 inches deep, southwest of the spike. As found, and based on observations of the characteristics of other corner stones found throughout the county, the stone appeared to be leaning to the east. The thicker part of the stone was to the west. The stone was stood up in a vertical orientation. In said orientation, it measured 17 inches tall by 9 inches E-W by 8 inches N-S at maximum dimensions. These are similar proportions as the stone described in the 1871 record but one inch larger in the E-W and N-S dimensions. No clearly identifiable marks were found on the stone. The top of the rock appeared to have been damaged slightly, presumably by road grading equipment, which made the detection of a mark uncertain. As originally found, approximately 70 percent of the stone was embedded in the clay layer below the road.
 The stone was held as marking the corner. The stone was removed and a Harrison monument was set in the position of the top of the stone as stood up. The miniature railroad spike, removed during excavation, had been 1.8 feet north and 0.8 foot east of the point held as the corner.
 This corner was originally established as a wood post in 1820.




 Kenneth E. Hedge, County Surveyor


 James S. Swift, IN LS 20200054
 March 23, 2017

Jefferson Township	Section 7 T18N, R1W	Section 8 T18N, R1W
Jackson Township	Section 18 T18N, R1W	Section 17 T18N, R1W

PHOTOGRAPHIC DOCUMENTATION

Date of photography: July 13, 2016

The stone as it was originally exposed.



The stone fully exposed and stood vertical.



View from the south looking across the stone and north along County Road 500 West.



View from the east looking across the stone and west along County Road 200 South.



For details and documentation, refer to related sheet "Section Corner Record."

SECTION CORNER RECORD

SW 200-600

BOONE COUNTY SURVEYOR'S OFFICE

- ① S.E. Corner, Section 12
N.E. Corner, Section 13
T 18 N, R 2 W
- ② S.W. Corner, Section 7
N.W. Corner, Section 18
T 18 N, R 1 W

Distance between monuments: 66.9'
Original federal closing distance:
101 links (66.6')

State Plane grid coordinates NAD83 (2011):

Corner 1: North: 1734791.95 East: 3093215.64 (U.S. survey feet)

Corner 2: North: 1734858.83 East: 3093215.14 (U.S. survey feet)

Type of monument: Harrison, 4" disk 'Section Corner'

Depth: One inch deep (Corner 1) six inches deep (Corner 2)

Indiana tie card references:

IN02_T18NR2W12_80 IN02_T18NR1W07_72

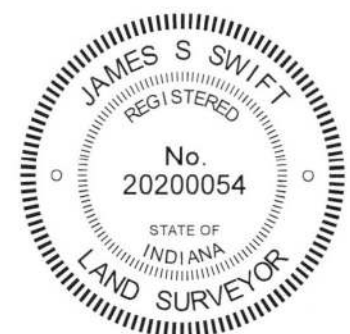
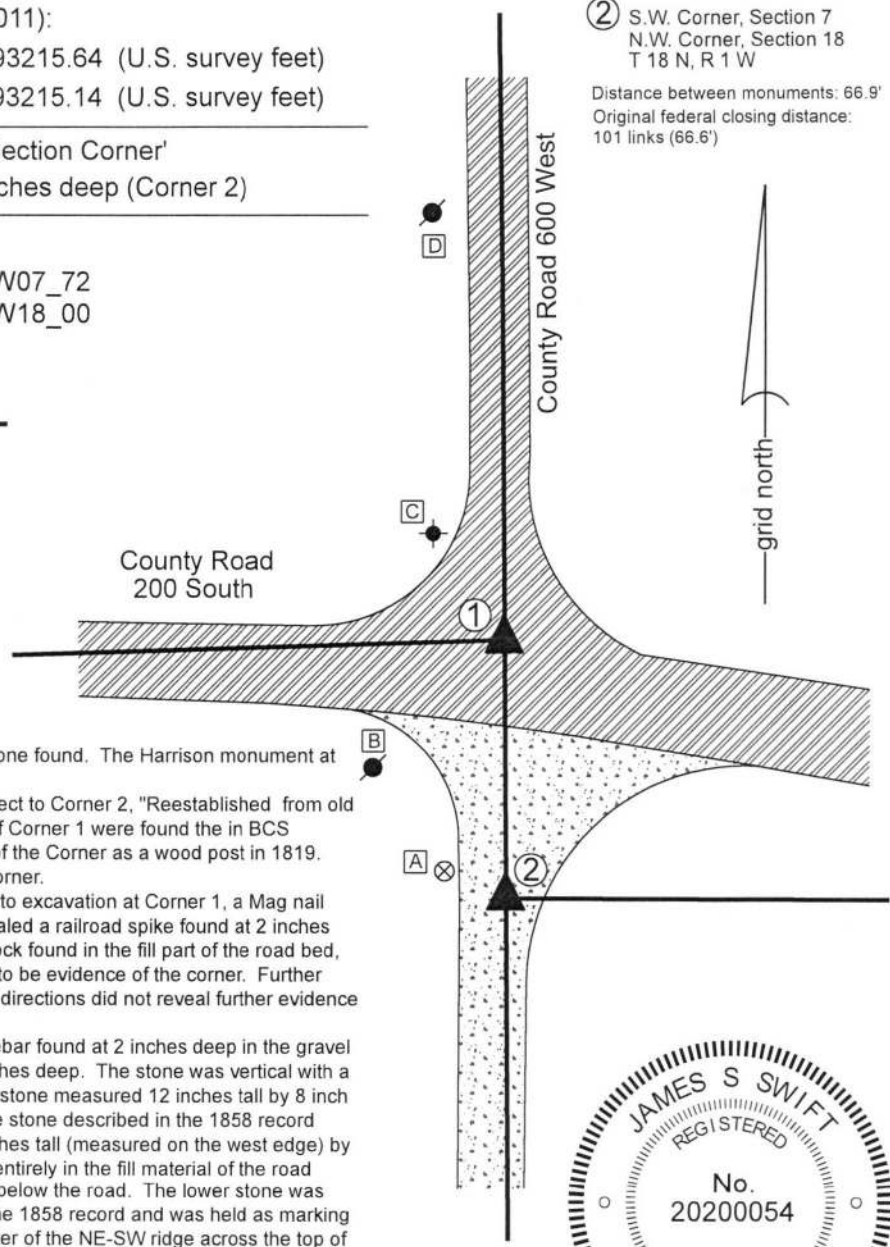
IN02_T18NR2W13_08 IN02_T18NR1W18_00

CORNER WITNESS DETAIL

SCALE 1" = 50'

- A - Boone County witness mark, flush
61.9' to Corner 1, 17.5' to Corner 2
- B - Mag nail set in E. side power pole, 2' a.g.
45.9' to Corner 1, 47.3' to Corner 2
- C - East edge, stop sign post, 2' a.g.
32.4' to Corner 1, 96.0' to Corner 2
- D - Mag nail set in S.E. side power pole, 2' a.g.
111.2' to Corner 1, 117.7' to Corner 2

The Harrison monument at Corner 2 was set over a stone found. The Harrison monument at Corner 1 was set at a calculated position. A BCS record of October 15-16, 1858 states with respect to Corner 2, "Reestablished from old witness tree. Rock 13x17." No specific descriptions of Corner 1 were found in BCS Surveyor's Record beyond the original establishment of the Corner as a wood post in 1819. No recent BCS tie cards were found referencing this corner. Both corners were excavated on June 28, 2018. Prior to excavation at Corner 1, a Mag nail was found at the surface of the road. Excavation revealed a railroad spike found at 2 inches deep, 0.1 foot east and 0.05 foot north of the nail. A rock found in the fill part of the road bed, slightly northwest of the railroad spike, did not appear to be evidence of the corner. Further excavation of an area extending 2.5 feet in all cardinal directions did not reveal further evidence of the corner. Excavation at Corner 2 began at a 1/2 inch diameter rebar found at 2 inches deep in the gravel roadway. Excavation revealed a stone found at 14 inches deep. The stone was vertical with a distinct high point, oriented in cardinal directions. The stone measured 12 inches tall by 8 inch N-S by 3 inches E-W. The stone was removed and the stone described in the 1858 record was found directly below. This stone measured 17 inches tall (measured on the west edge) by 13 inches NE-SW. The upper stone was found to be entirely in the fill material of the road while the lower stone was embedded in the clay layer below the road. The lower stone was accepted as being the same monument described in the 1858 record and was held as marking Corner 2. A Harrison monument was set over the center of the NE-SW ridge across the top of the rock. The 1/2 inch rebar, removed during excavation, had been 1.9 feet west and 0.9 foot north of the point held as the corner. The position of Corner 1 was established at the intersection of a line extended from the standard corner 1/2 mile south (see Corner SW 250-600) through the Harrison monument set at Corner 2 and a line extended from the corner 1/2 mile west (see Corner SW 200-650) through the found railroad spike near Corner 1. A Harrison monument was set at this point of intersection on September 4, 2018. The railroad spike, removed during excavation, had been 1.9 feet westerly of this position. It is noted that the closing distance reported in the original federal notes for these corners is 101 links (66.6 feet) and that the two corners were set at 66.9 feet. Corner 1 was originally established as a wood post in 1819. Corner 2 was established as a wood post in 1820.



Jefferson Township
Jackson Township

Section 12 T18N, R2W	Section 7 T18N, R1W
Section 13 T18N, R2W	Section 18 T19N, R1W

James S. Swift
James S. Swift, IN LS 20200054

Kenneth E. Hedge
Kenneth E. Hedge, County Surveyor

September 5, 2018

SECTION CORNER RECORD

SW 250-600

BOONE COUNTY SURVEYOR'S OFFICE

State Plane grid coordinates NAD83 (2011):

Corner 1: North: 1732211.77 East: 3093235.96 (U.S. survey feet)

Corner 2: North: 1732153.45 East: 3093236.35 (U.S. survey feet)

Type of monument: Harrison, 4" disk 'Section Corner'

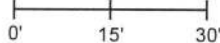
Depth: four to six inches below adjacent gravel road surface

Indiana tie card references:

IN02_T18NR2W13_44 IN02_T18NR1W18_36

CORNER WITNESS DETAIL

SCALE 1" = 30'



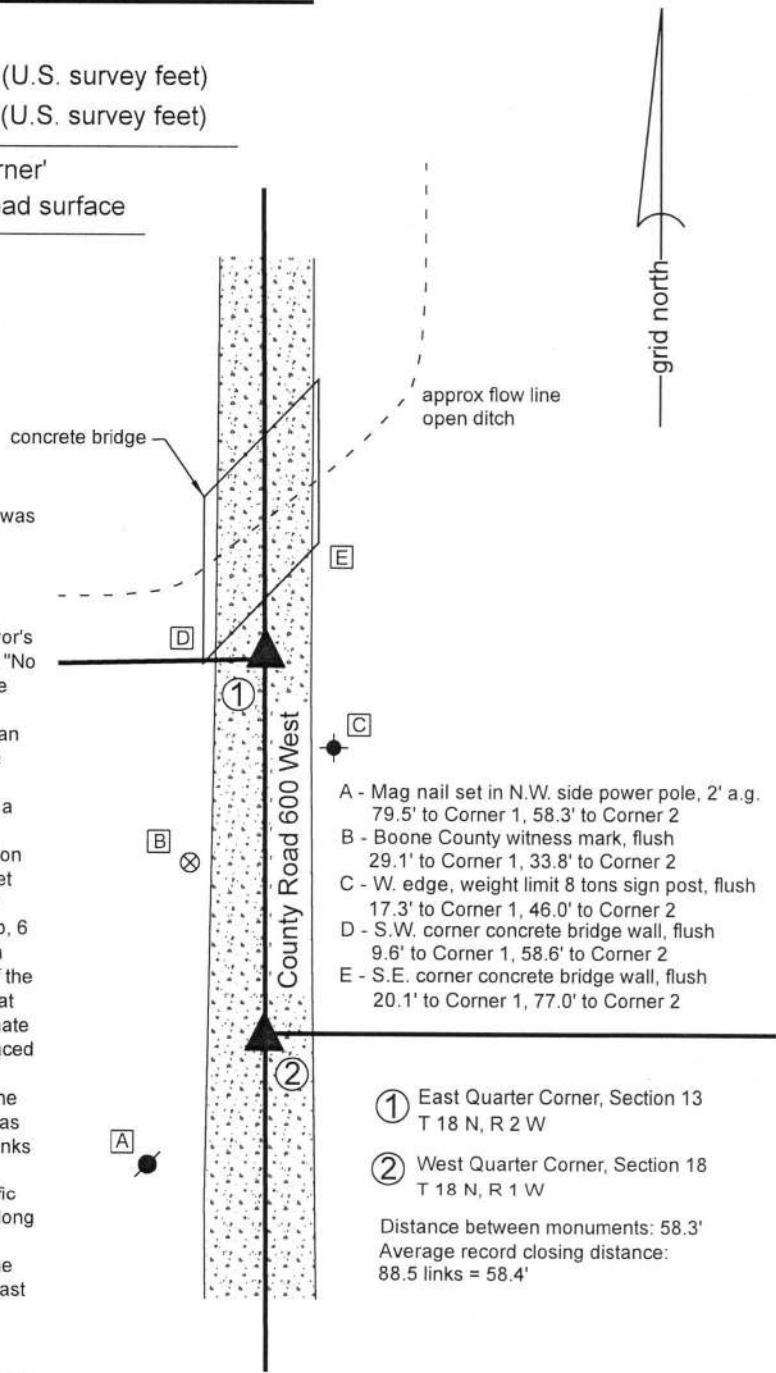
The Harrison monument at Corner 2 was set in place of a vertical section of railroad rail found. The Harrison monument at Corner 1 was set on the range line, as defined by Corner 2, adjacent to a rebar found.

A BCS record dated October 15-16, 1858 states, with respect to Corner 2, "Established from cor to sec 13, R2W. Rock 10x26." No specific descriptions of Corner 1 were found in the BCS Surveyor's Record. A BCS tie card dated October 5, 1971 shows Corner 2 as "No stone" and an entry in the BCS Surveyor's Record of the same date states "No stone - Railroad rail set."

It is noted that Corner 1 falls at the southern edge of a bridge over an open ditch and it is considered unlikely that ancient evidence of the corner remains present.

Corner 2 was excavated on August 21, 2018. Prior to excavation, a vertical section of railroad rail was found at 7 inches deep in agreement with distance ties shown on the 1971 tie card. Excavation of an area extending 4 feet north, 4 feet south, 3 feet east and 3 feet west of the found section of rail revealed no further evidence of the corner. Excavation was performed to a minimum of 14 inches deep, 6 inches into the clay layer found below the road bed. The rail fit with local evidence of the corner in the form of the being in the center of the north-south roadway and being in line with evidence of occupation at the east edge of the road and also fits well with distances to proximate corners. The rail was accepted as marking Corner 2 and was replaced with a Harrison monument in the same position. Substantial excavation was not performed at Corner 1 due to the presence of the bridge. A 5/8 inch rebar with a red plastic cap (markings illegible) was found at a position very near the average closing distance of 88.5 links (computed with respect to the original federal notes for the section corners 1/2 mile north and 1/2 mile south, respectively). The specific position of Corner 1 was established on the range line as defined along the prolongation of the line connecting Corner 2 and the standard corner approximately 1/2 mile south (see Corner SW 300-600) at the same northerly position as the found rebar. This point is 0.2 foot east of the position of the rebar. On August 22, 2018, the rebar was removed and a Harrison monument was set at Corner 1 at the calculated position described above.

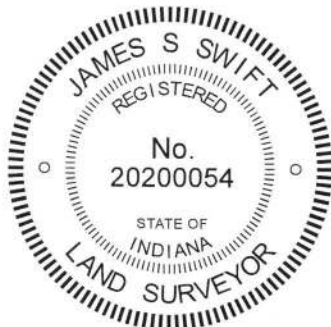
Corner 1 was originally established as a wood post in 1819. Corner 2 is not an original corner of the PLSS.



- A - Mag nail set in N.W. side power pole, 2' a.g. 79.5' to Corner 1, 58.3' to Corner 2
- B - Boone County witness mark, flush 29.1' to Corner 1, 33.8' to Corner 2
- C - W. edge, weight limit 8 tons sign post, flush 17.3' to Corner 1, 46.0' to Corner 2
- D - S.W. corner concrete bridge wall, flush 9.6' to Corner 1, 58.6' to Corner 2
- E - S.E. corner concrete bridge wall, flush 20.1' to Corner 1, 77.0' to Corner 2

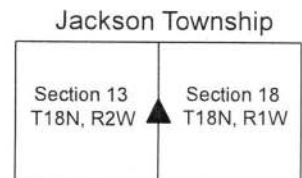
- ① East Quarter Corner, Section 13 T 18 N, R 2 W
- ② West Quarter Corner, Section 18 T 18 N, R 1 W

Distance between monuments: 58.3'
Average record closing distance: 88.5 links = 58.4'



Kenneth E. Hedge
Kenneth E. Hedge, County Surveyor

James S. Swift
James S. Swift, IN LS 20200054
August 29, 2018



SECTION CORNER RECORD

SW 300-550

BOONE COUNTY SURVEYOR'S OFFICE

State Plane grid coordinates NAD83 (2011):

North: 1729518.99 East: 3095721.29 (U.S. survey feet)

Type of monument: Harrison, 4" disk 'Section Corner'

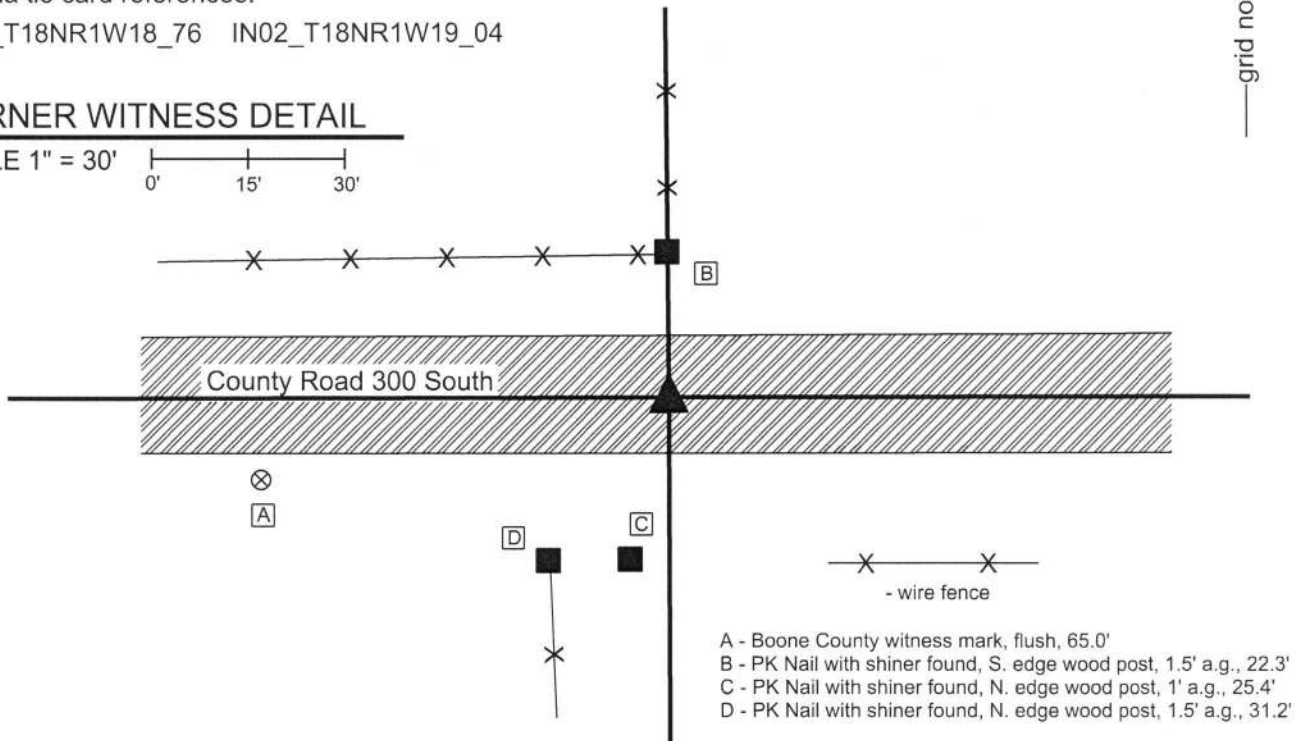
Depth: One inch below adjacent road surface

Indiana tie card references:

IN02_T18NR1W18_76 IN02_T18NR1W19_04

CORNER WITNESS DETAIL

SCALE 1" = 30'

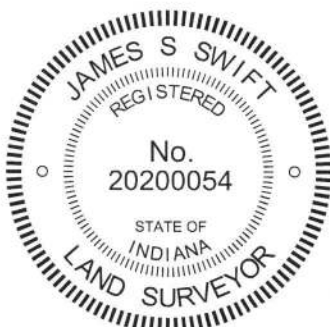


The Harrison monument was set in place of a railroad spike found.

A BCS record dated October 15-16, 1858, states, with respect to this corner, "Reestablished from old Wit tree. Rock 9x10." A BCS tie card dated January 18, 1994 shows the corner as a railroad spike in the center of County Road 300 South in line with a fence to the north.

This corner was excavated on June 12, 2018. Prior to excavation, a railroad spike was found at the surface of the road, in general agreement with the position shown on the 1994 tie card. Excavation revealed another railroad spike found below the first spike found. Further excavation of an area extending 2.5 feet in all cardinal directions from the railroad spikes revealed no further evidence of the corner. The bottom of the road bed was found at 19 inches deep. Excavation was performed to approximately 21 inches deep. It is noted that the bottom of the road bed was composed of rocky material which is typically associated with wet ground and may explain the fact that no stone was found. The found railroad spikes fit well with the relative positions of proximate corners and fit well with local evidence of the corner in the form of the existing roadway and fence to the north. The railroad spikes were held as marking the corner and were replaced with a Harrison monument in the same position.

This corner was originally established as a wood post in 1820.



Kenneth E. Hedge
Kenneth E. Hedge, County Surveyor

James S. Swift
James S. Swift, IN LS 20200054
June 27, 2018

Jackson
Township

Section 18
T18N, R1W

Section 19
T18N, R1W

SECTION CORNER RECORD

BOONE COUNTY SURVEYOR'S OFFICE

SW 300-600

Data for Corner 1 only:

State Plane grid coordinates NAD83 (2011):

North: 1729563.81 East: 3093253.40 (U.S. survey feet)

Type of monument: Harrison, 4" disk 'Section Corner'

Depth: Six inches below adjacent gravel road surface

Indiana tie card references:

IN02_T18NR2W13_80 IN02_T18NR1W18_72

IN02_T18NR2W24_08 IN02_T18NR1W19_00

CORNER WITNESS DETAIL

SCALE 1" = 60'

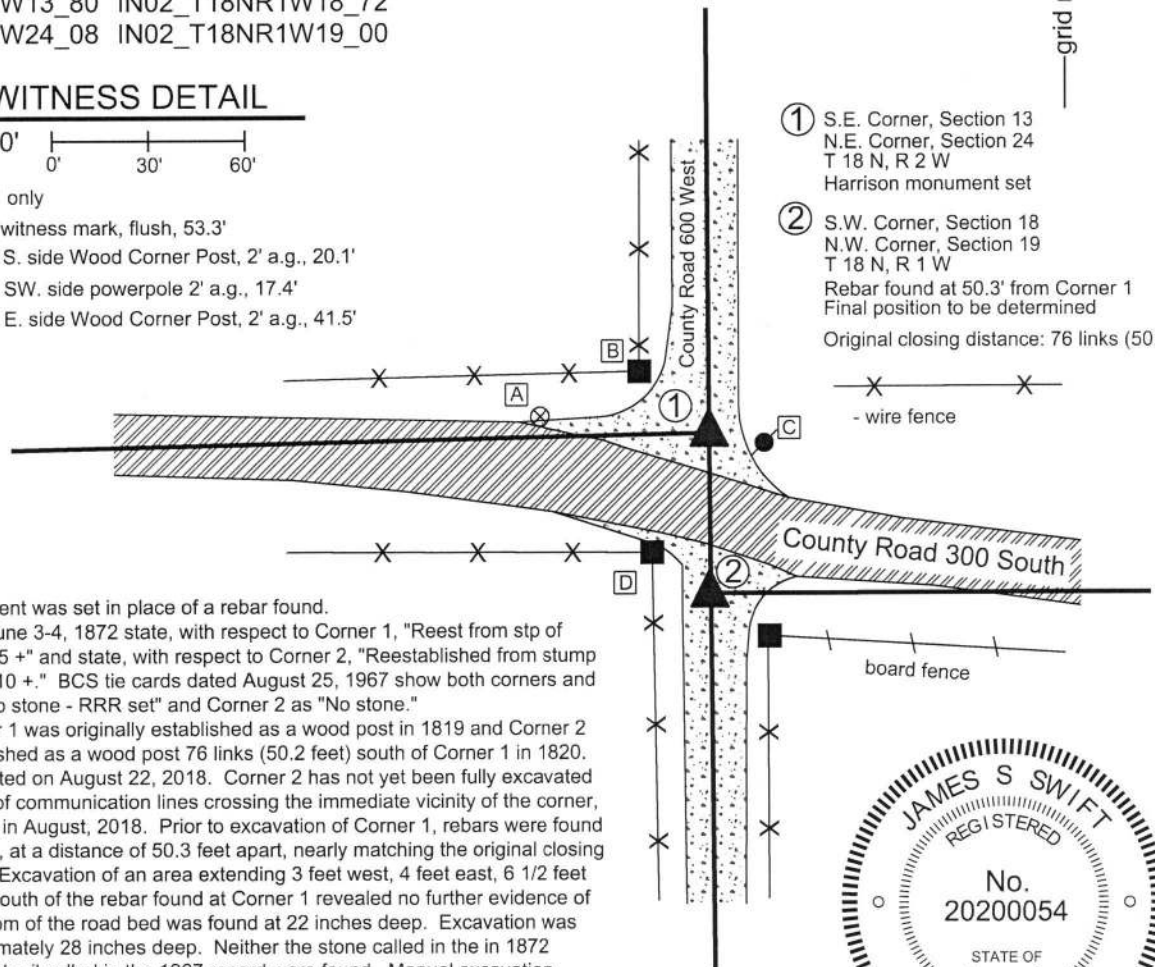
All ties to Corner 1 only

A - Boone County witness mark, flush, 53.3'

B - Mag nail set in S. side Wood Corner Post, 2' a.g., 20.1'

C - Mag nail set in SW. side powerpole 2' a.g., 17.4'

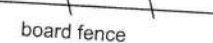
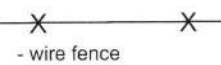
D - Mag nail set in E. side Wood Corner Post, 2' a.g., 41.5'



① S.E. Corner, Section 13
N.E. Corner, Section 24
T 18 N, R 2 W
Harrison monument set

② S.W. Corner, Section 18
N.W. Corner, Section 19
T 18 N, R 1 W
Rebar found at 50.3' from Corner 1
Final position to be determined

Original closing distance: 76 links (50.2')

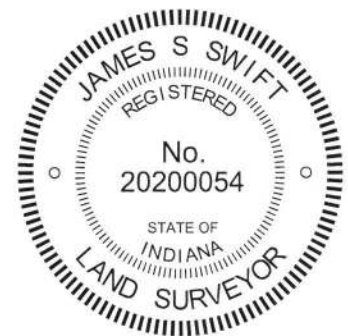


The Harrison monument was set in place of a rebar found.

BCS records dated June 3-4, 1872 state, with respect to Corner 1, "Reest from stp of Beech, set rock 10 7 5 +'" and state, with respect to Corner 2, "Reestablished from stump of Lynn, Rock 16 10 10 +." BCS tie cards dated August 25, 1967 show both corners and show Corner 1 as "No stone - RRR set" and Corner 2 as "No stone."

It is noted that Corner 1 was originally established as a wood post in 1819 and Corner 2 was originally established as a wood post 76 links (50.2 feet) south of Corner 1 in 1820. Corner 1 was excavated on August 22, 2018. Corner 2 has not yet been fully excavated due to the presence of communication lines crossing the immediate vicinity of the corner, as marked by IUPPS in August, 2018. Prior to excavation of Corner 1, rebars were found marking both corners, at a distance of 50.3 feet apart, nearly matching the original closing distance of 76 links. Excavation of an area extending 3 feet west, 4 feet east, 6 1/2 feet north and 3 1/2 feet south of the rebar found at Corner 1 revealed no further evidence of the corner. The bottom of the road bed was found at 22 inches deep. Excavation was performed to approximately 28 inches deep. Neither the stone called in the in 1872 record nor the railroad rail called in the 1967 record were found. Manual excavation around the rebar at Corner 2 revealed no further evidence. Though it was expected that vertical sections of railroad rail would be found at both corners, rails were not found at either corner. It appears that significant grading or roadwork has occurred at this intersection since 1967. It is noted that the positions of the two rebars fit reasonably well with the local evidence of the corners in the form the physical roadways in all four cardinal directions. It is also noted that the distance tie references from the 1967 plans appear to be gone and that most of the various fencing appears to be more recent than 1967.

The found rebar at Corner 1 was held as marking the corner and was replaced with a Harrison monument. The rebar at Corner 2 was left in place, 50.3 feet south of Corner 1. The final position of Corner 2 will be established after the position of the east quarter corner of Section 24 is established.



Jackson Township

Section 13 T18N, R2W	Section 18 T18N, R1W
Section 24 T18N, R2W	Section 19 T18N, R1W

Kenneth E. Hedge

Kenneth E. Hedge, County Surveyor
February 6, 2019

James S. Swift

James S. Swift, IN LS 20200054