

SECTION CORNER RECORD

BOONE COUNTY SURVEYOR'S OFFICE

NE 900-700

State Plane grid coordinates NAD83 (CORS96):

North: 1794038.31 East: 3161197.33 (U.S. survey feet)

Type of monument: Harrison, 4" disk 'Section Corner'

Depth: six inches below adjacent gravel road surface

Indiana tie card references:

IN02_T20NR2E18_80 IN02_T20NR2E17_72

IN02_T20NR2E19_08 IN02_T20NR2E20_00

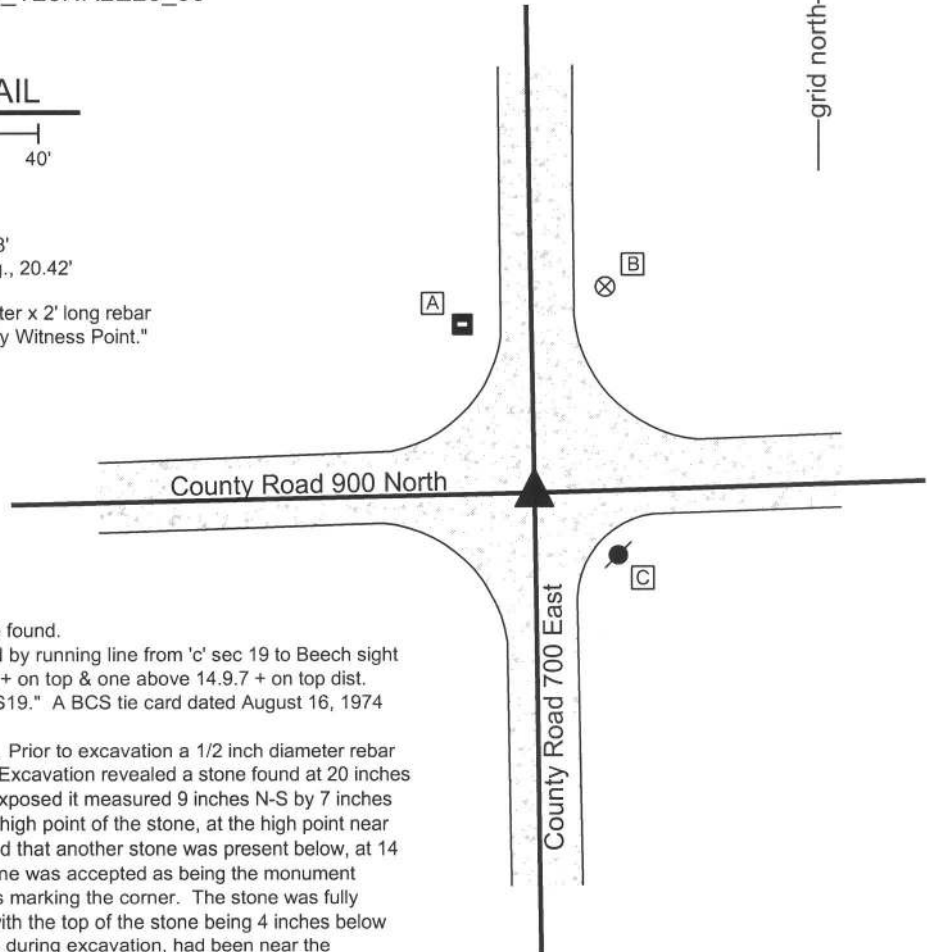


CORNER WITNESS DETAIL

SCALE 1" = 40'

- A - East edge, metal stop sign post, 37.56'
- B - Boone County witness mark, flush, 45.38'
- C - Mag nail set in N. side power pole, 2' a.g., 20.42'

Boone County witness mark is a 3/8" diameter x 2' long rebar bearing a metal cap stamped "Boone County Witness Point."



The harrison monument was set over a stone found.

A BCS record of April 28, 1883 states "Found by running line from 'c' sec 19 to Beech sight tree north (distance 49.20) Set Rock 6.11.13 + on top & one above 14.9.7 + on top dist. 29.13 south of sight tree & 20.07 north of 'c' S19." A BCS tie card dated August 16, 1974 states "no stone found."

This corner was excavated on July 30, 2013. Prior to excavation a 1/2 inch diameter rebar was found at the surface of the gravel road. Excavation revealed a stone found at 20 inches deep. With 6 inches of the top of the stone exposed it measured 9 inches N-S by 7 inches E-W. A vague chisel mark was visible at the high point of the stone, at the high point near the north edge of the stone. Probing indicated that another stone was present below, at 14 inches from the top of the top stone. The stone was accepted as being the monument described in the 1883 record and was held as marking the corner. The stone was fully embedded in the clay layer below the road, with the top of the stone being 4 inches below the top of the clay layer. The rebar, removed during excavation, had been near the southwest edge of the stone, being 0.5 foot south and 0.6 foot west of the etched mark on the high point. The stone was left in place and a harrison monument was set directly over the etched + mark.

This corner was originally established as a wood post in 1821.



Kenneth E. Hedge
 Kenneth E. Hedge, County Surveyor

James S. Swift
 James S. Swift, IN LS 20200054
 February 5, 2015

Marion Township

Section 18 T20N, R2E	Section 17 T20N, R2E
Section 19 T20N, R2E	Section 20 T20N, R2E

PHOTOGRAPHIC DOCUMENTATION

Date of photography: July 30, 2013

View of the stone as first exposed.
View from above and west.



View from above, showing the etched "+" mark on the top of the stone.



View from above the stone, looking west along County Road 900 North.



View from the north, looking across the stone and south along County Road 700 East.



For details and documentation, refer to related sheet "Section Corner Record."

SECTION CORNER RECORD

NE 900-750

BOONE COUNTY SURVEYOR'S OFFICE

State Plane grid coordinates NAD83 (CORS96):

North: 1794116.82 East: 3163843.60 (U.S. survey feet)

Type of monument: Harrison, 4" disk 'Section Corner'

Depth: six inches below adjacent gravel road surface

Indiana tie card references:

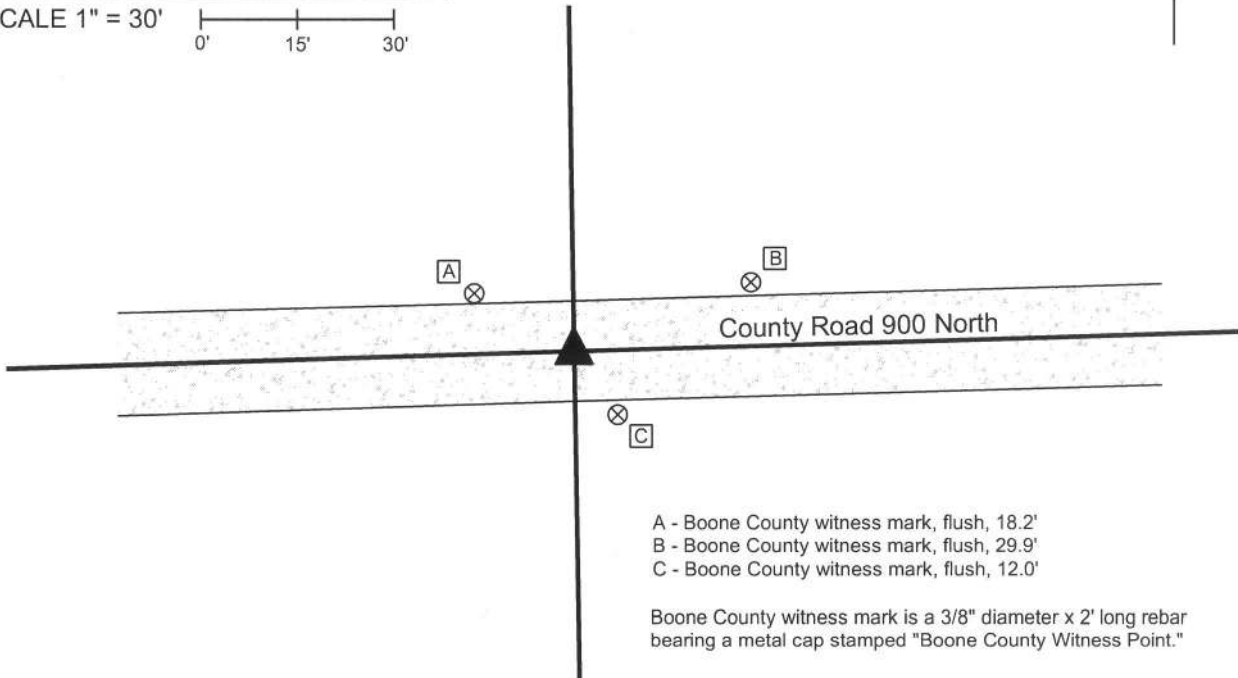
IN02_T20NR2E17_76

IN02_T20NR2E20_04



CORNER WITNESS DETAIL

SCALE 1" = 30'



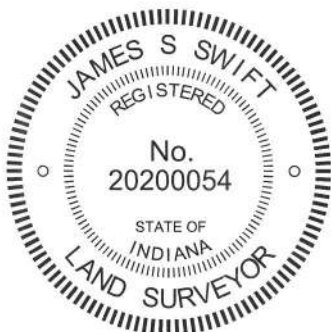
- A - Boone County witness mark, flush, 18.2'
- B - Boone County witness mark, flush, 29.9'
- C - Boone County witness mark, flush, 12.0'

Boone County witness mark is a 3/8" diameter x 2' long rebar bearing a metal cap stamped "Boone County Witness Point."

The harrison monument was set over a stone found.

A BCS record of April 28, 1883 states "Est 39.86 1/2 from E & G. Set Rock 14.7.7 +." A BCS tie card dated August 11, 1974 states "no stone found." This corner was excavated on September 11, 2013. Prior to excavation a 5/8 inch diameter rebar was found at 3 inches below the surface of the gravel road. Excavation revealed a stone found at 5 inches deep, north and west of the rebar. The stone was removed, measured and found to be 13 inches tall by 7 inches N-S by 8 inches E-W. The stone had been embedded in the clay layer below the road bed, protruding approximately 2 inches into the base of the road. The top of the stone appeared to have been hit repeatedly by road grading equipment and it was not clear whether marks found on the top of the stone were purposely etched or just damage from the grader blade. The stone was accepted as being the monument described in the 1883 record. The stone was removed and replaced in the same position with a harrison monument. The rebar, removed during excavation, was 5/8 inch diameter, 30 inches long and appeared to have been set more recently than 1974. The rebar had been 1.8 feet south and 2.1 feet east of the stone. The 1883 record states that this corner was set at equal distance from the southeast and southwest corners of section 17. The stone, as found is approximately 0.5 of a foot from being at equal distance to the stones found at those corners.

This corner was originally established as a wood post in 1821.



Kenneth E. Hedge, County Surveyor

James S. Swift, IN LS 20200054
February 5, 2015



PHOTOGRAPHIC DOCUMENTATION

Date of photography: September 11, 2013

View of the stone as first exposed.



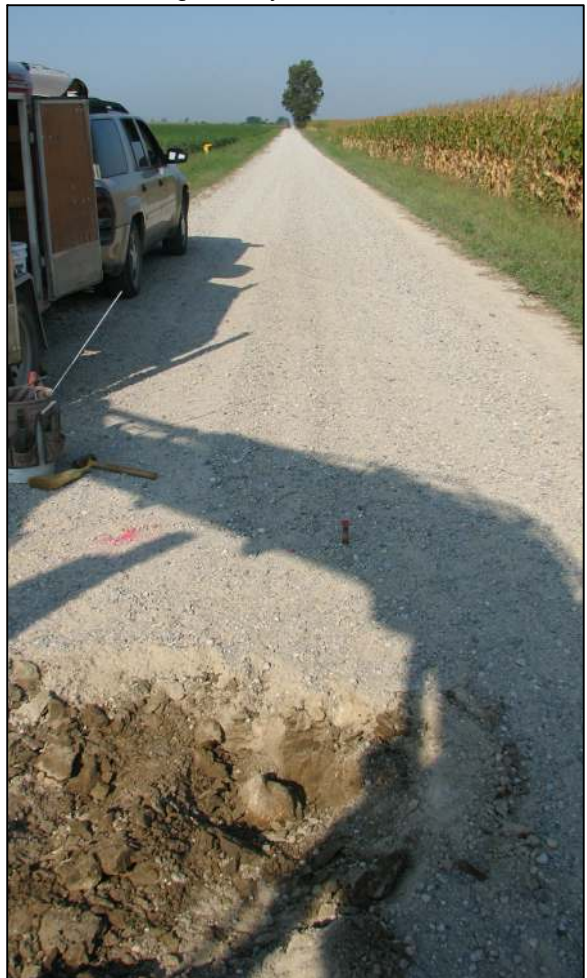
The stone removed from the road.



The stone removed from the road.



View from the east, looking across the stone and west along County Road 900 North.



The stone removed from the road.



For details and documentation, refer to related sheet "Section Corner Record."

SECTION CORNER RECORD

NE 900-800

BOONE COUNTY SURVEYOR'S OFFICE

State Plane grid coordinates NAD83 (CORS96):

North: 1794194.48 East: 3166488.82 (U.S. survey feet)

Type of monument: Harrison, 4" disk 'Section Corner'

Depth: six inches below adjacent gravel road surface

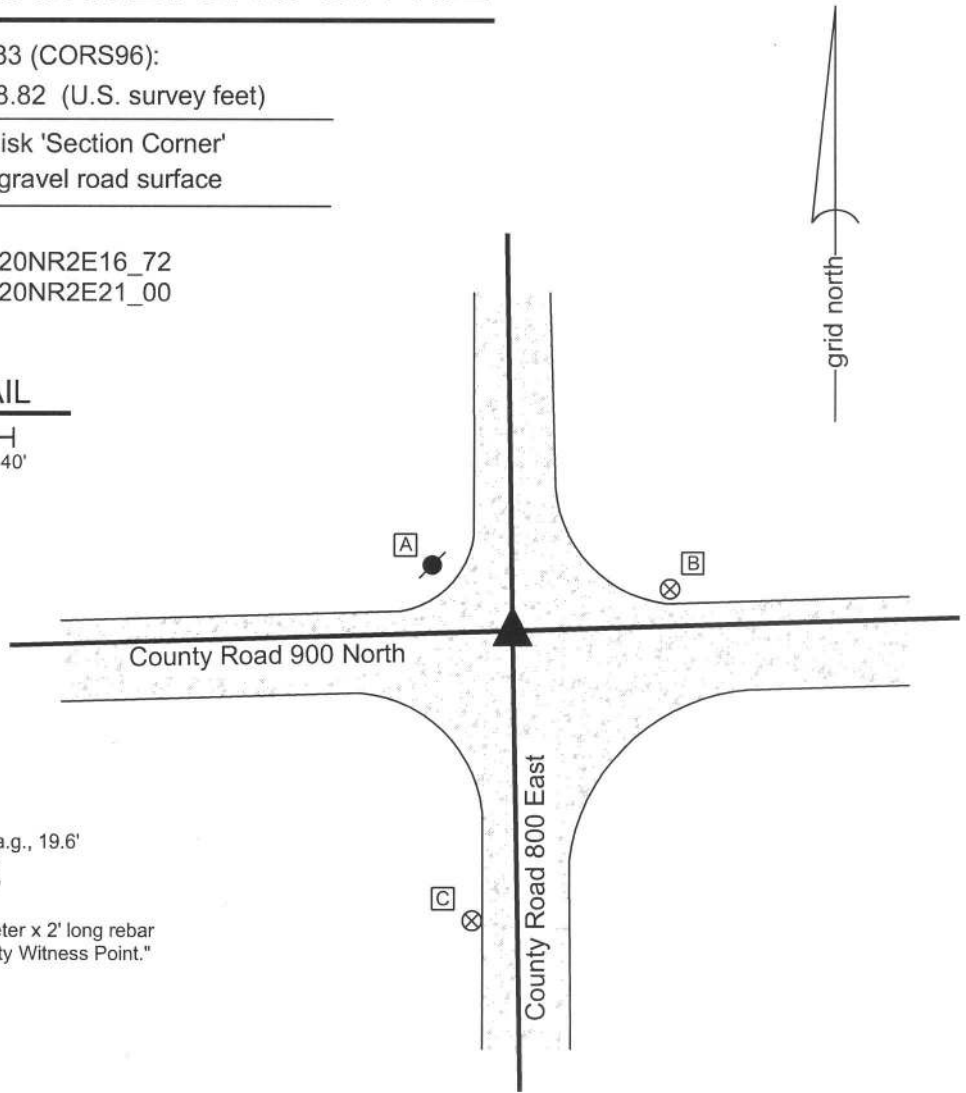
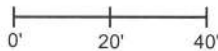
Indiana tie card references:

IN02_T20NR2E17_80 IN02_T20NR2E16_72

IN02_T20NR2E20_08 IN02_T20NR2E21_00

CORNER WITNESS DETAIL

SCALE 1" = 40'

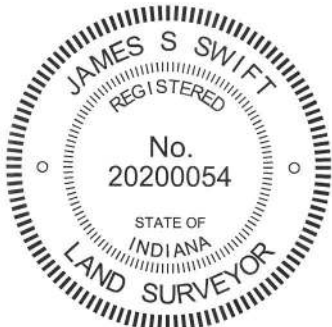


- A - Mag nail set in S.E. side power pole, 2' a.g., 19.6'
- B - Boone County witness mark, flush, 33.8'
- C - Boone County witness mark, flush, 61.1'

Boone County witness mark is a 3/8" diameter x 2' long rebar bearing a metal cap stamped "Boone County Witness Point."

The harrison monument was set over a stone found.

A BCS record of April 28, 1883 states "found from Oak stump, set no monument." Subsequent records of 1903, 1908 mention the corner as the terminal point for measurements, but do not specifically describe a monument. A BCS tie card dated August 21, 1974 states "no stone found." This corner was excavated on September 10, 2013. Prior to excavation a railroad spike was found at 6 inches deep at the intersection of the gravel roads. The source of the railroad spike is not known. Excavation revealed a piece of an old wood stake found below the railroad spike. Further excavation revealed a stone found at 18 inches deep, slightly north of the railroad spike. With the top 8 inches of the stone exposed, it measured 8 inches E-W by 8 inches N-S. The stone was vertical with a distinct high point and was embedded in the clay layer below the road with the top of the stone at the bottom of the road bed. The stone fit very well with local evidence in the form of visual reckoning of the longer centers of the two roads, fit the characteristics of stones found at many other corners throughout the county and was accepted as the best available evidence of the corner. The stone was left in place, the top 3 inches were encased in concrete and a harrison monument was set over the top high point. The railroad spike, removed during excavation, had been 1.3 feet south and 0.3 foot east of the stone. This corner was originally established as a wood post in 1821.



Kenneth E. Hedge
 Kenneth E. Hedge, County Surveyor

James S. Swift
 James S. Swift, IN LS 20200054
 February 5, 2015

Marion Township

Section 17 T20N, R2E	Section 16 T20N, R2E
Section 20 T20N, R2E	Section 21 T20N, R2E

PHOTOGRAPHIC DOCUMENTATION

Date of photography: September 10, 2013

View of the stone from above and west.



View of the stone from above and north.



View from the east, looking across the stone and west along County Road 900 North.



View from the south, looking across the stone and north along County Road 800 East.



For details and documentation, refer to related sheet "Section Corner Record."

SECTION CORNER RECORD

NE 950-700

BOONE COUNTY SURVEYOR'S OFFICE

State Plane grid coordinates NAD83 (CORS96):

North: 1796696.08 East: 3161155.20 (U.S. survey feet)

Type of monument: Harrison, 4" disk 'Section Corner'

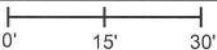
Depth: four inches below adjacent gravel road surface

Indiana tie card references:

IN02_T20NR2E18_44

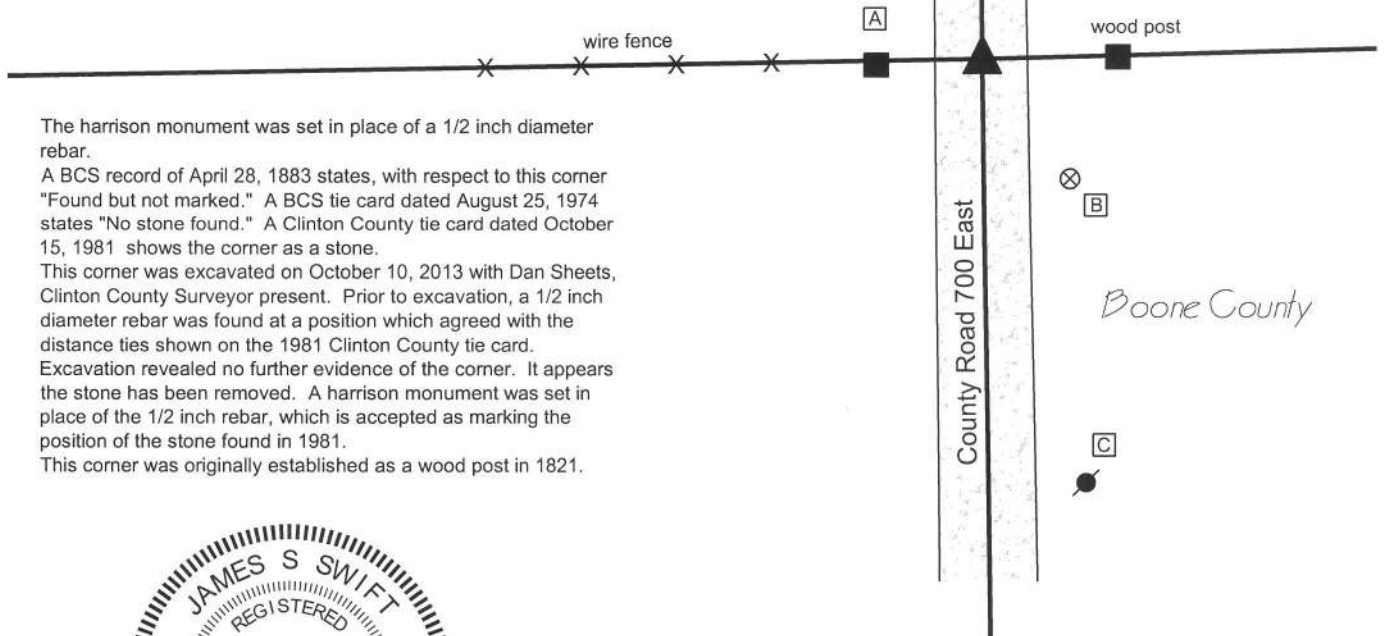
IN02_T20NR2E17_36

CORNER WITNESS DETAIL

SCALE 1" = 30' 

- A - Mag nail set in E. side, wood end post, 1' a.g., 16.47'
- B - Boone County witness mark, flush, 23.06'
- C - Mag nail set in N.W. side, power pole, 2' a.g., 66.86'

Boone County witness mark is a 3/8" diameter x 2' long rebar bearing a metal cap stamped "Boone County Witness Point."



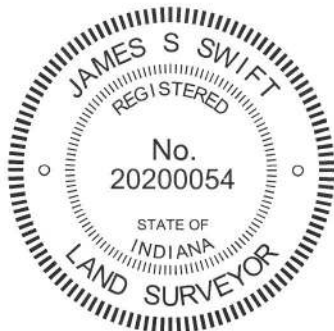
The harrison monument was set in place of a 1/2 inch diameter rebar.

A BCS record of April 28, 1883 states, with respect to this corner "Found but not marked." A BCS tie card dated August 25, 1974 states "No stone found." A Clinton County tie card dated October 15, 1981 shows the corner as a stone.


This corner was excavated on October 10, 2013 with Dan Sheets, Clinton County Surveyor present. Prior to excavation, a 1/2 inch diameter rebar was found at a position which agreed with the distance ties shown on the 1981 Clinton County tie card.

Excavation revealed no further evidence of the corner. It appears the stone has been removed. A harrison monument was set in place of the 1/2 inch rebar, which is accepted as marking the position of the stone found in 1981.

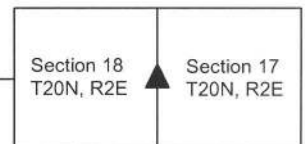
This corner was originally established as a wood post in 1821.




 Kenneth E. Hedge, County Surveyor


 James S. Swift, IN LS 20200054
 February 5, 2015

Kirklin Township
 Clinton County
 Marion Township
 Boone County



SECTION CORNER RECORD

NE 950-800

BOONE COUNTY SURVEYOR'S OFFICE

State Plane grid coordinates NAD83 (CORS96):

North: 1796837.30 East: 3166448.48 (U.S. survey feet)

Type of monument: Harrison, 4" disk 'Section Corner'

Depth: two inches below adjacent road surface

Indiana tie card references:

IN02_T20NR2E17_44

IN02_T20NR2E16_36



CORNER WITNESS DETAIL

SCALE 1" = 30'
0' 15' 30'

- A - N. edge metal stop sign post, flush, 12.65'
- B - Boone County witness mark, flush, 26.65'
- C - Boone County witness mark, flush, 27.88'

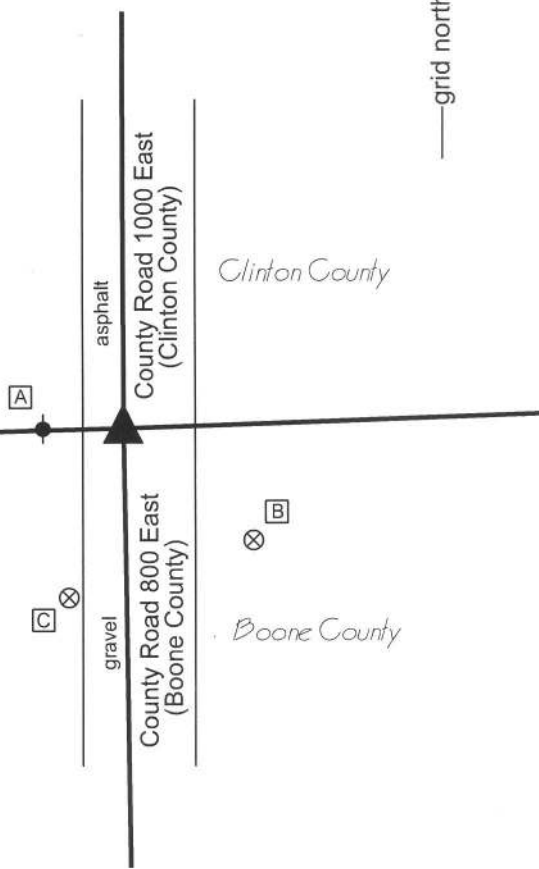
Boone County witness mark is a 3/8" diameter x 2' long rebar bearing a metal cap stamped "Boone County Witness Point."

The harrison monument was set in place of a 5/8 inch diameter rebar found.

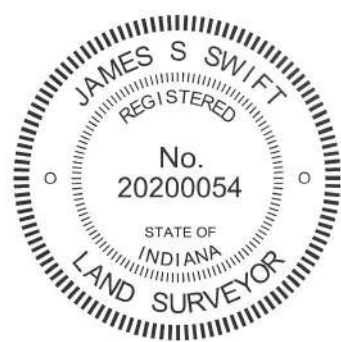
A BCS record of April 28, 1883 states, with respect to this corner, "Point found but not marked." A BCS tie card dated August 24, 1974 states "stone found." A Clinton County tie card dated March, 2009 shows the corner as an "IRON BAR 2" deep, 3' W CL RD."

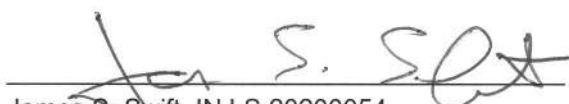
This corner was excavated on October 11, 2013. Prior to excavation a 5/8 inch diameter rebar was found in the west half of the road, in apparent agreement with the 2009 Clinton County tie card. Excavation of an area extending 3 feet north, 5 feet east, 4 feet south and 3 feet west of the rebar revealed no further evidence. No distance ties remain from the 1974 BCS tie card which references a stone found. It is not specifically known whether the found rebar is in the same position as the stone found in 1974. Nonetheless, the found rebar was the only evidence of the corner found and was held as marking the corner. The rebar was removed and replaced with a harrison monument in the same position.

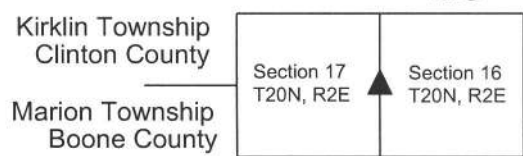
This corner was originally established as a wood post in 1821.




Kenneth E. Hedge, County Surveyor




James S. Swift, IN LS 20200054
February 5, 2015



Sugar Creek Twp
Clinton County