

SECTION CORNER RECORD

BOONE COUNTY SURVEYOR'S OFFICE

NW 900-400

State Plane grid coordinates NAD83 (COR96):

North: 1793233.30 East: 3103594.69 (U.S. survey feet)

Type of monument: Harrison, 4" disk 'Section Corner'

Depth: One inch below adjacent road surface

Indiana tie card references:

IN02_T20NR1E17_80 IN02_T20NR1E16_72

IN02_T20NR1E20_08 IN02_T20NR1E21_00

CORNER WITNESS DETAIL

SCALE 1" = 30'

- A - Mag nail set in E. side power pole, 2' a.g., 27.0'
- B - Boone County witness mark, flush, 32.2'
- C - Boone County witness mark, flush, 29.2'

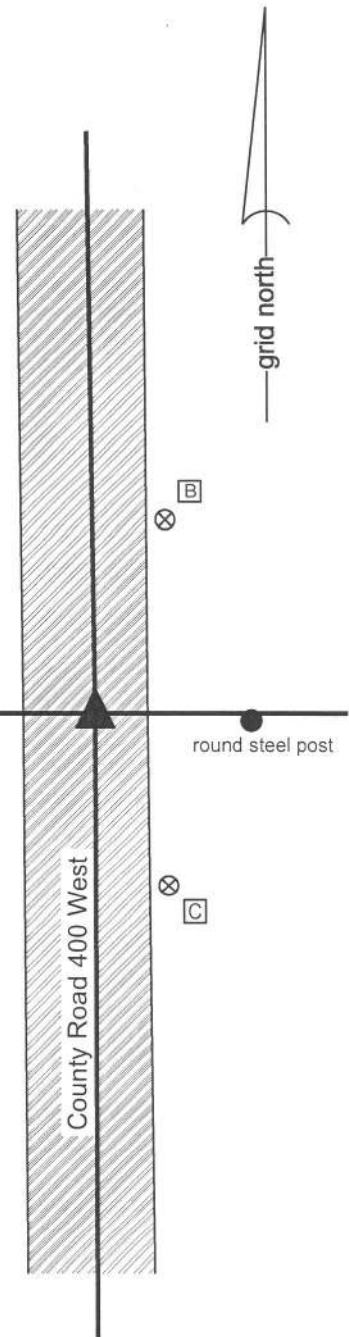
Boone County witness mark is a 3/8" diameter x 2' long rebar bearing a metal cap stamped "Boone County Witness Point."

The Harrison monument was set over a stone found.

A BCS record of March 13-14, 1863 states, with respect to this corner, "Reest'd from trees. The Ash is standing, the other is cut down. Set Rock 17x10x10 marked X." It is noted that most BCS records refer to the mark on the stone as as "+". On this particular record the "+" is obliterated and marked over with an "X". No recent BCS tie cards were found referencing this corner.

Excavation was performed at this corner on September 12, 2014. Prior to excavation, a 3/4 inch diameter rebar was found at 4 inches deep in a hole in the asphalt. Excavation revealed a stone found at 16 inches, east of the rebar. The stone was embedded in the clay layer below the road, protruding 2 to 3 inches out of the clay into the bottom of the road. The top of the stone was triangular in shape and appeared to be vertical, though the top of the stone was sloping with the high point at the northwest tip. An deeply etched X mark was clearly visible at the northwest tip. Notably, the mark was not oriented with cardinal directions in the fashion of most marks found on the top of corner stones. This orientation appeared to fit with the written record wherein the "+" was replaced with an "X". The stone was measured to be 9 inches N-S by 9 inches E-W, though the measurements were slightly subjective, given the irregular shape of the top of the stone. The 1863 records calls for 10x10. 12 inches was exposed on the west side of the rock and the stone appeared to be yet taller. The stone was accepted as being the same monument called for in the 1863 record and was held as marking the corner. A Harrison monument was set directly over the etched mark on the top, northwest corner of the stone. The rebar, removed during excavation, had been 2.7 feet west of the mark on the stone. The source of the rebar is not known.

This corner was originally established as a wood post in 1829.



Kenneth E. Hedge
 Kenneth E. Hedge, County Surveyor

James S. Swift
 James S. Swift, IN LS 20200054

March 27, 2015

Washington Township

Section 17 T20N, R1E	Section 16 T20N, R1E
Section 20 T20N, R1E	Section 21 T20N, R1E

PHOTOGRAPHIC DOCUMENTATION

Date of photography: September 12, 2014

The stone as originally found.



The more fully exposed, viewed from the west.



The stone, brushed, with much of the vertical east side exposed and the etched "x" mark visible at the northwest tip of the stone.



View from above the stone, looking north along County Road 400 West.



Close-up of the northwest tip of the stone, washed and scrubbed to show the etched mark.



For details and documentation, refer to related sheet "Section Corner Record."

SECTION CORNER RECORD

BOONE COUNTY SURVEYOR'S OFFICE

NW 900-500

State Plane grid coordinates NAD83 (CORS96):

North: 1793202.81 East: 3098255.23 (U.S. survey feet)

Type of monument: Harrison, 4" disk 'Section Corner'

Depth: six inches below adjacent gravel road surface

Indiana tie card references:

IN02_T20NR1W18_80 IN02_T20NR1W17_72

IN02_T20NR1W19_08 IN02_T20NR1W20_00

CORNER WITNESS DETAIL

SCALE 1" = 30'

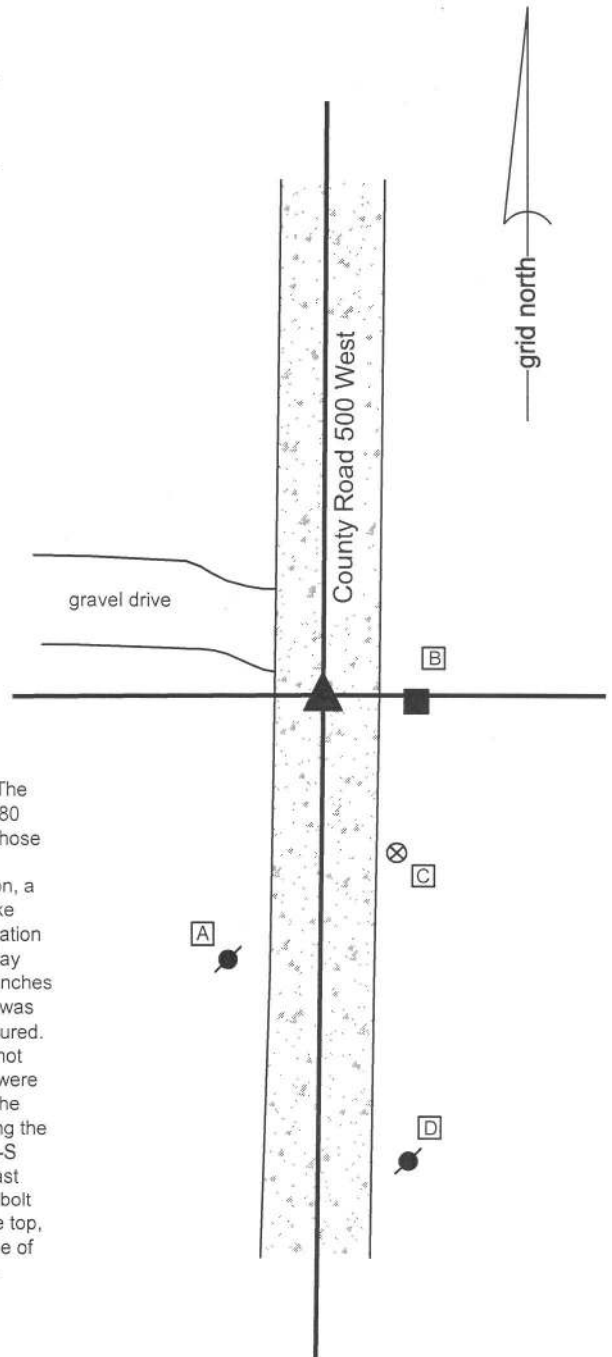
A - Mag nail set in E. side power pole, 2' a.g., 43.4'

B - Mag nail set in S. side wood post, 1' a.g., 14.5'

C - Boone County witness mark, flush, 27.0'

D - Mag nail set in N. side power pole, 72.6'

Boone County witness mark is a 3/8" diameter x 2' long rebar bearing a metal cap stamped "Boone County Witness Point."

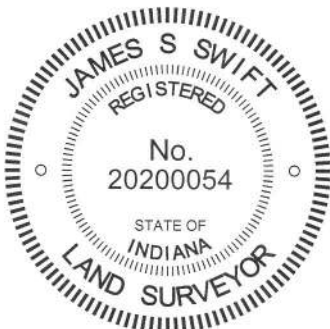


The Harrison monument was set over the top, center of a stone found.

No specific descriptions of this corner were found in the BCS Surveyor's Record. The corner is mentioned as the terminal point for measurements in records of 1863, 1880 and 1883, indicating that some monument was present from which to measure at those times. No recent BCS tie cards were found referencing this corner.

Excavation was performed at this corner on September 8, 2014. Prior to excavation, a square head "bolt spike" was found 3 inches deep in the gravel road. The bolt spike was removed and found to be on a 5/8 inch diameter shaft, 12 inches long. Excavation revealed a stone found at 14 inches deep. The stone was fully embedded in the clay layer below the road with the top of the stone at the top of the clay layer. With six inches of the top of the stone exposed, it measured 11 inches N-S by 13 inches E-W and was clearly larger in the vertical dimension. The total height of the stone was not measured. The stone had a generally flat top. A vague, possible mark was visible on top but not positively confirmed as being created by humans. The characteristics of this rock were similar to those of other stones found for which the records are similar, being that the County Surveyor had apparently found a monument at the corner rather than setting the monument. The stone fit well with local evidence in the form of the center of the N-S and approximately in-line with, though slightly north of, the old wood post on the east side of the road. The top, center of the stone was held as marking the corner. The bolt spike, removed during excavation, had been 0.8 foot south and 0.8 foot west of the top, center of the stone, which would have been approximately along the southwest side of the stone. The stone was left in place and a Harrison monument was set over the approximate center point of the flat top of the stone.

This corner was originally established as a wood post in 1829.



Kenneth E. Hedge
 Kenneth E. Hedge, County Surveyor

James S. Swift
 James S. Swift, IN LS 20200054
 March 27, 2015

Washington Township

Section 18 T20N, R1W	Section 17 T20N, R1W
Section 19 T20N, R1W	Section 20 T20N, R1W

PHOTOGRAPHIC DOCUMENTATION

Date of photography: September 8, 2014

The stone as originally found.



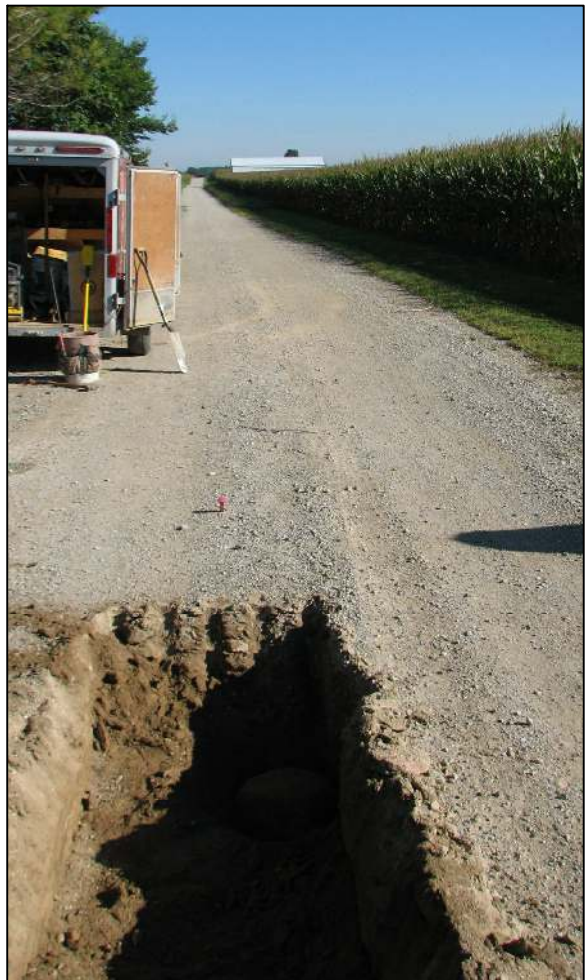
The stone more fully exposed.



View from the west, looking across the stone (in the shadows) and towards the post on the east edge of County Road 500 East.



View from the south, looking across the stone (in the shadows) and north along County Road 500 East.



For details and documentation, refer to related sheet "Section Corner Record."

SECTION CORNER RECORD

NW 950-400

BOONE COUNTY SURVEYOR'S OFFICE

State Plane grid coordinates NAD83 (CORS96):

North: 1795887.45 East: 3103560.89 (U.S. survey feet)

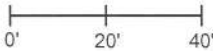
Type of monument: Harrison, 4" disk 'Section Corner'

Depth: one inch below adjacent road surface

Indiana tie card references:

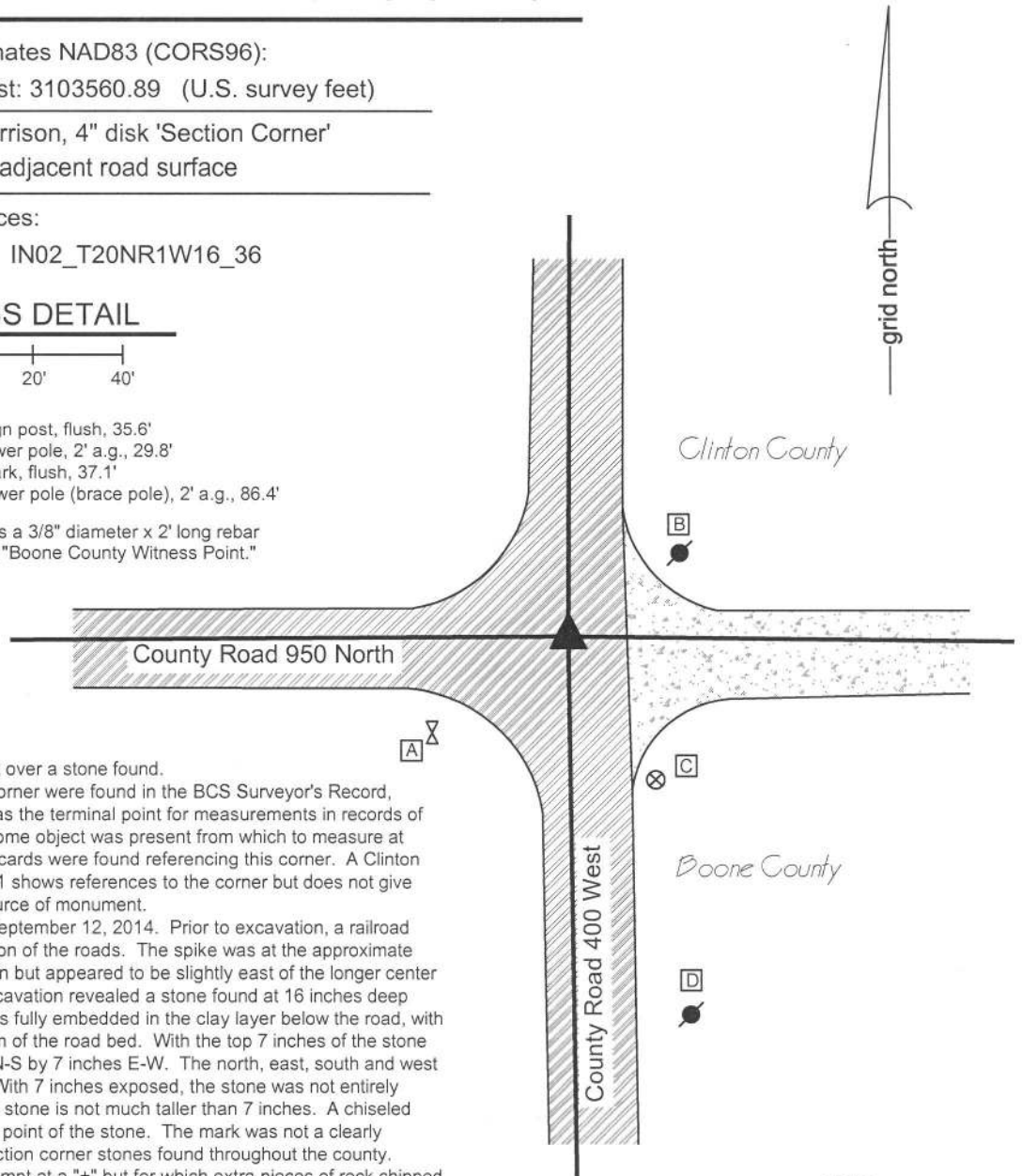
IN02_T20NR1W17_44 IN02_T20NR1W16_36

CORNER WITNESS DETAIL

SCALE 1" = 40' 

- A - North edge, metal stop sign post, flush, 35.6'
- B - Mag nail set in S. side power pole, 2' a.g., 29.8'
- C - Boone County witness mark, flush, 37.1'
- D - Mag nail set in N. side power pole (brace pole), 2' a.g., 86.4'

Boone County witness mark is a 3/8" diameter x 2' long rebar bearing a metal cap stamped "Boone County Witness Point."

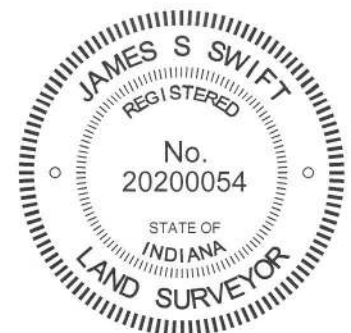


The Harrison monument was set over a stone found. No specific descriptions of this corner were found in the BCS Surveyor's Record, though the corner is mentioned as the terminal point for measurements in records of 1847 and 1863, indicating that some object was present from which to measure at those times. No recent BCS tie cards were found referencing this corner. A Clinton County tie card October 15, 1981 shows references to the corner but does not give information about the type or source of monument.

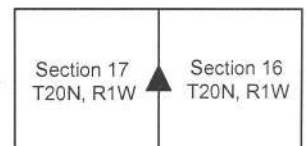
This corner was excavated on September 12, 2014. Prior to excavation, a railroad spike was found in the intersection of the roads. The spike was at the approximate center of the physical intersection but appeared to be slightly east of the longer center lines to the north and south. Excavation revealed a stone found at 16 inches deep west of the spike. The stone was fully embedded in the clay layer below the road, with the top of the stone at the bottom of the road bed. With the top 7 inches of the stone exposed, it measured 6 inches N-S by 7 inches E-W. The north, east, south and west sides were all flat and vertical. With 7 inches exposed, the stone was not entirely stable and it is believed that the stone is not much taller than 7 inches. A chiseled mark was found on the top, high point of the stone. The mark was not a clearly defined "+" as is common on section corner stones found throughout the county. Rather, it appeared to be an attempt at a "+" but for which extra pieces of rock chipped away during the chiseling process. The stone was accepted as the best available evidence of the corner. The stone was left in place and a Harrison monument was set over the top, high point of the stone. The railroad spike, removed during excavation, had been 1.75 feet east and 0.5 foot south of this point.

This corner was originally established as a wood post in 1829.


 Kenneth E. Hedge, County Surveyor



Jackson Twp
 Clinton County
 Washington Twp
 Boone County



James S. Swift, IN LS 20200054
 March 27, 2015

PHOTOGRAPHIC DOCUMENTATION

Date of photography: September 12, 2014

The stone as originally found.



The stone from above, brushed.
Note the partial mark on the top.



View from the south, looking across the stone and north along Clinton County Road 200 West (northerly extension of Boone County 400 West).



View from the east, looking across the stone and west along County Road 950 North



For details and documentation, refer to related sheet "Section Corner Record."

SECTION CORNER RECORD

NW 950-500

BOONE COUNTY SURVEYOR'S OFFICE

State Plane grid coordinates NAD83 (CORS96):

North: 1795856.11 East: 3098270.76 (U.S. survey feet)

Type of monument: Harrison, 4" disk 'Section Corner'

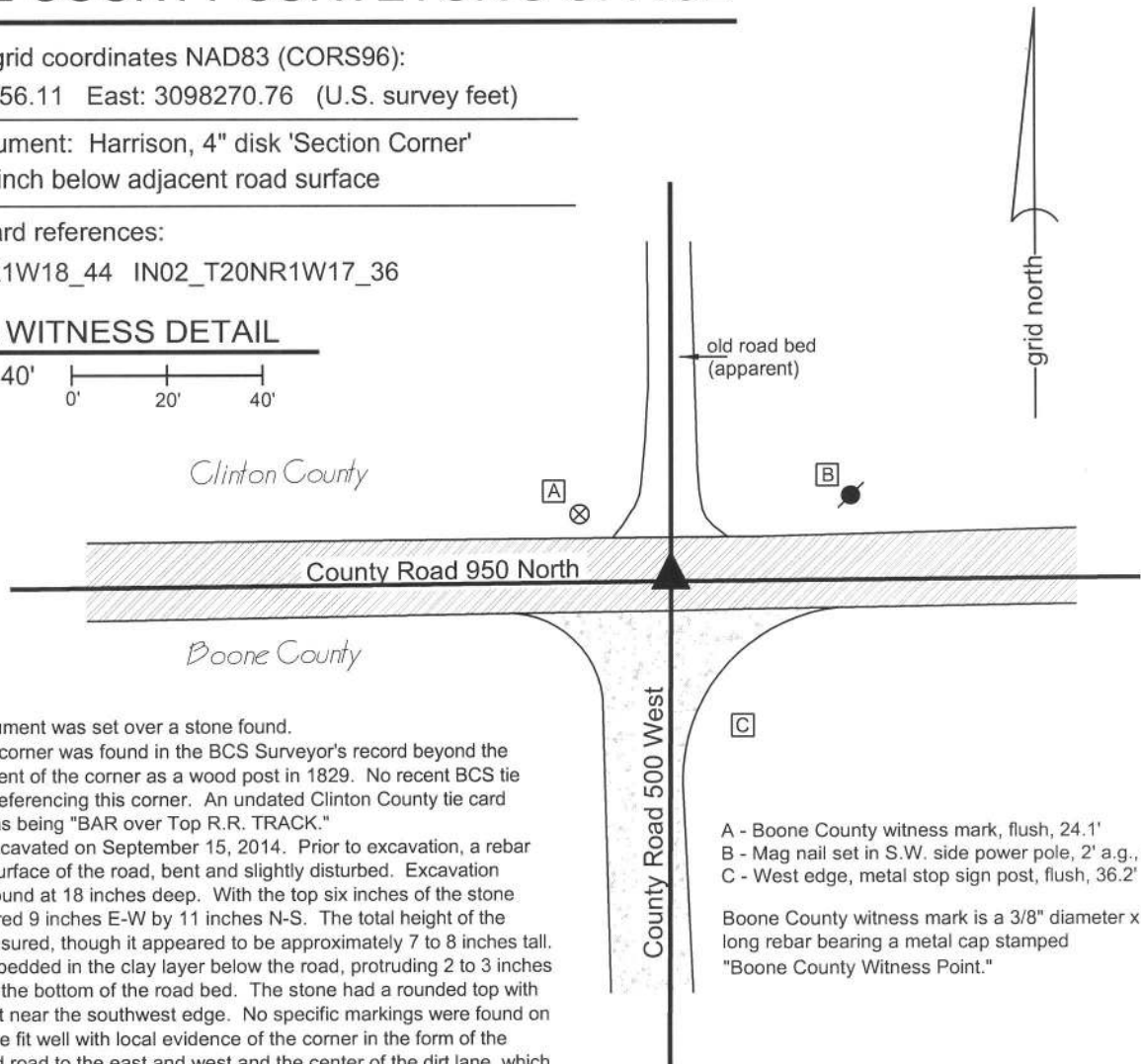
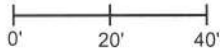
Depth: One inch below adjacent road surface

Indiana tie card references:

IN02_T20NR1W18_44 IN02_T20NR1W17_36

CORNER WITNESS DETAIL

SCALE 1" = 40'



The Harrison monument was set over a stone found.

No mention of this corner was found in the BCS Surveyor's record beyond the original establishment of the corner as a wood post in 1829. No recent BCS tie cards were found referencing this corner. An undated Clinton County tie card shows the corner as being "BAR over Top R.R. TRACK."

This corner was excavated on September 15, 2014. Prior to excavation, a rebar was found at the surface of the road, bent and slightly disturbed. Excavation revealed a stone found at 18 inches deep. With the top six inches of the stone exposed, it measured 9 inches E-W by 11 inches N-S. The total height of the stone was not measured, though it appeared to be approximately 7 to 8 inches tall. The stone was embedded in the clay layer below the road, protruding 2 to 3 inches out of the clay into the bottom of the road bed. The stone had a rounded top with a distinct high point near the southwest edge. No specific markings were found on the rock. The stone fit well with local evidence of the corner in the form of the center of the paved road to the east and west and the center of the dirt lane, which had been a county road prior to the construction of Interstate 65, to the north. The stone was east of the center of the county road to the south in the immediate vicinity of the intersection but fit well with the longer centerline to the south. The position, depth, being in the clay layer below the road, and orientation, being oriented in cardinal directions, of the stone matches the characteristics of other stone found marking corners throughout the county. The fact that the stone bore no markings and was not particularly vertical is not surprising, given the lack of mention of the corner in the BCS records and the presumption that it was most likely set by early pioneer landowners, perhaps in place of the original wood post, rather than the County Surveyor. The stone was accepted as the best available evidence of the corner and held as marking such. The stone was left in place and a Harrison monument was set over the top, high point of the stone. The rebar, removed during excavation, had been 1.5 feet north and 1.2 feet west of the point held as the corner.

- A - Boone County witness mark, flush, 24.1'
- B - Mag nail set in S.W. side power pole, 2' a.g., 40.2'
- C - West edge, metal stop sign post, flush, 36.2'

Boone County witness mark is a 3/8" diameter x 2' long rebar bearing a metal cap stamped "Boone County Witness Point."

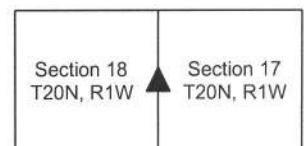


Kenneth E. Hedge
Kenneth E. Hedge, County Surveyor

James S. Swift
James S. Swift, IN LS 20200054

Jackson Twp
Clinton County
Washington Twp
Boone County

March 27, 2015



PHOTOGRAPHIC DOCUMENTATION

Date of photography: September 15, 2014

The stone as originally found.



The stone more fully exposed.



View from the north, looking across the stone and south along County Road 500 West.



View from the west, looking across the stone and east along County Road 950 North toward the Interstate 65 overpass.



For details and documentation, refer to related sheet "Section Corner Record."