

# SECTION CORNER RECORD

NE 900-150

## BOONE COUNTY SURVEYOR'S OFFICE

State Plane grid coordinates NAD83 (2011):

Corner: North: 1793181.20 East: 3132234.67 (U.S. survey feet)

Witness: North: 1793181.20 East: 3132235.55 (U.S. survey feet)

Corner monument: wood corner post

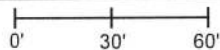
Witness monument: 5/8" diameter rebar with aluminum cap stamped 'Boone County Surveyor' 3 inches above surrounding ground

Indiana tie card references:

IN02\_T20NR1E17\_44 IN02\_T20NR1E20\_36

### CORNER WITNESS DETAIL

SCALE 1" = 60'



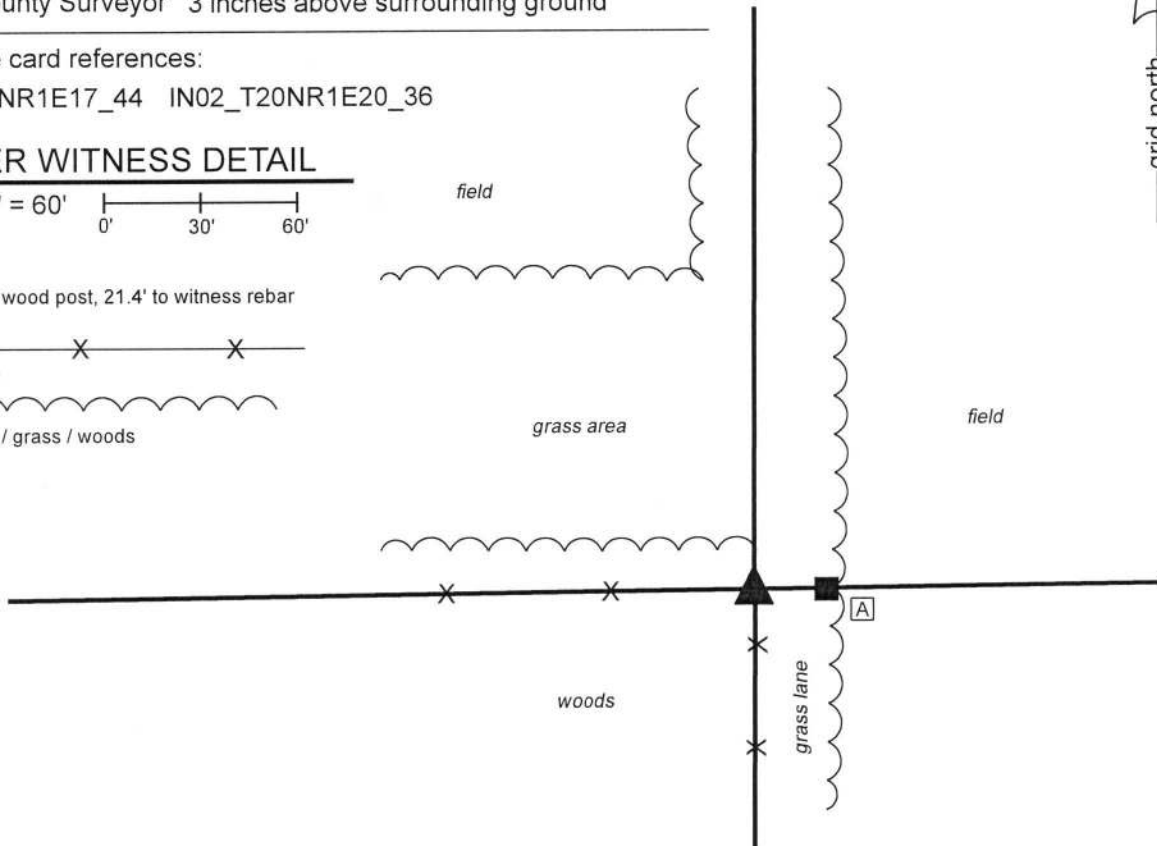
A - 8" by 8" wood post, 21.4' to witness rebar



- wire fence



- edge field / grass / woods

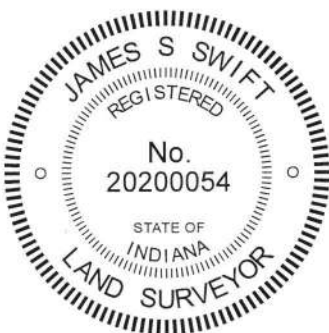


The wood corner post was found in place and held as marking the corner.

No specific descriptions of this corner were found in the BCS Surveyor's Record beyond the original establishment of the corner as a wood post in 1822. No recent BCS tie cards were found referencing the corner. A survey by Jerry L. Carter, LS No. S0350, recorded in Survey Book 12, page 67 in the Office of the Boone County Recorder shows the corner as "post (fnd) (best evidence)."

The wood corner post was found in place at the intersection of fences to the south and west, immediately west of a wood post on the east side of a grass lane. The post represents the northerly terminus of a fence which begins on the north right-of-way of County Road 850 North, in line with a railroad spike commonly held as marking the center of section 20. Excavation around the post in March, 2018 revealed no stones or other evidence of the corner. The position of the post fits well with the relative positions of proximate corners. The post was accepted as representing the best available evidence of the corner and was held as marking the corner.

On August 20, 2019, a 30 inch length of 5/8 inch diameter rebar was set adjacent to the post as a witness monument. The center of the post is held as the corner. The post is 8 inches N-S by 10 inches E-W. The rebar is 5.5 inches east of the east edge of the post and 10.5 inches east of the point held as the corner.



Kenneth E. Hedge, County Surveyor

James S. Swift, IN LS 20200054  
August 28, 2019

Clinton Township

Section 17  
T20N, R1E

Section 20  
T20N, R1E

# SECTION CORNER RECORD

## BOONE COUNTY SURVEYOR'S OFFICE

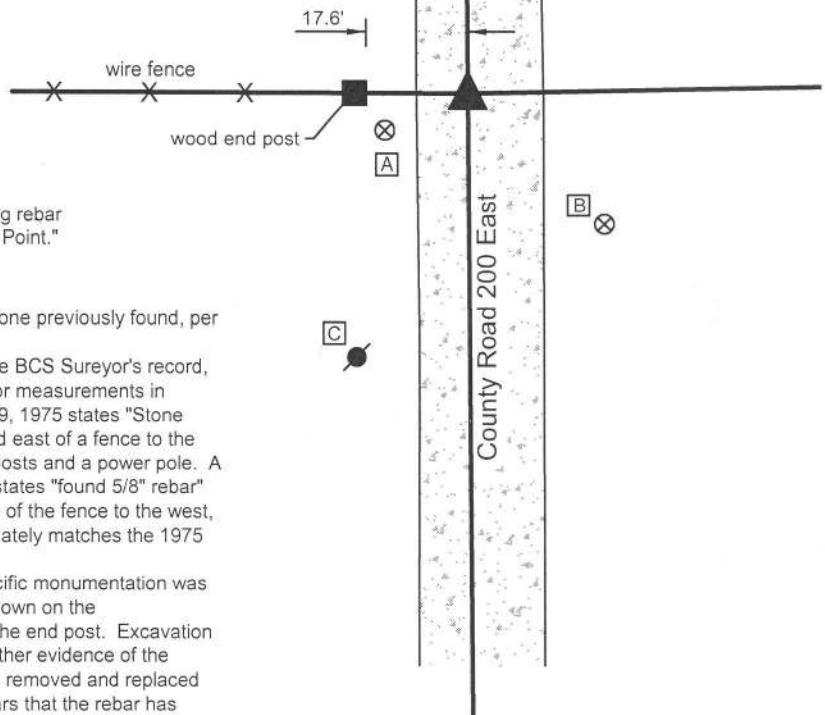
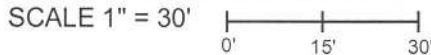
NE 900-200

State Plane grid coordinates NAD83 (CORS96):  
 North: 1793212.31 East: 3134820.13 (U.S. survey feet)

Type of monument: Harrison, 4" disk 'Section Corner'  
 Depth: six inches below adjacent gravel road surface

Indiana tie card references:  
 IN02\_T20NR1E17\_80 IN02\_T20NR1E16\_72  
 IN02\_T20NR1E20\_08 IN02\_T20NR1E21\_00

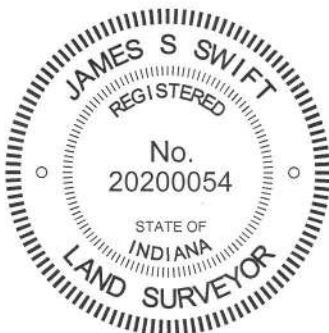
### CORNER WITNESS DETAIL



- A - Boone County witness mark, flush, 14.3'
- B - Boone County witness mark, flush, 29.8'
- C - Mag nail set in E. side power pole, 2' a.g., 44.5'

Boone County witness mark is a 3/8" diameter x 2' long rebar bearing a metal cap stamped "Boone County Witness Point."

The Harrison monument was set in the position of a stone previously found, per BCS records.  
 No specific descriptions of this corner were found in the BCS Sureyor's record, though the corner is mentioned as the terminal point for measurements in records of 1837 and 1894. A BCS tie card dated July 9, 1975 states "Stone Found - Set Rod" and shows the corner in line with and east of a fence to the west. The tie card shows distance ties to two corner posts and a power pole. A sketch from an unknown source dated April 27, 1977 states "found 5/8" rebar" and also shows the corner at the easterly prolongation of the fence to the west, with a tie to the end post of said fence which approximately matches the 1975 BCS tie card.  
 This corner was excavated on May 23, 2014. No specific monumentation was found prior to excavation, but the fence to the west, shown on the aforementioned documents, was yet present, as was the end post. Excavation of the roadway to the east of said post revealed no further evidence of the corner. It is believed that the stone found in 1975 was removed and replaced with a rebar, or 'rod' as called on the tie card. It appears that the rebar has been subsequently removed, most likely in association with road grading activities. The position of the corner was reestablished in line with the fence to the west at 17.6 feet east of the end post on the west side of the road, per the 1975 tie card. A Harrison monument was set at this position.  
 This corner was originally established as a wood post in 1822.



*Kenneth E. Hedge*  
 Kenneth E. Hedge, County Surveyor

*James S. Swift*  
 James S. Swift, IN LS 20200054  
 March 27, 2015

Clinton Township

Section 17 T20N, R1E	Section 16 T20N, R1E
Section 20 T20N, R1E	Section 21 T20N, R1E

# SECTION CORNER RECORD

NE 950-100

## BOONE COUNTY SURVEYOR'S OFFICE

State Plane grid coordinates NAD83 (CORS96):

North: 1795776.17 East: 3129652.11 (U.S. survey feet)

Type of monument: Harrison, 4" disk 'Section Corner'

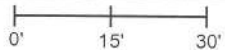
Depth: six inches below adjacent gravel road surface

Indiana tie card references:

IN02\_T20NR1E18\_44 IN02\_T20NR1E17\_36

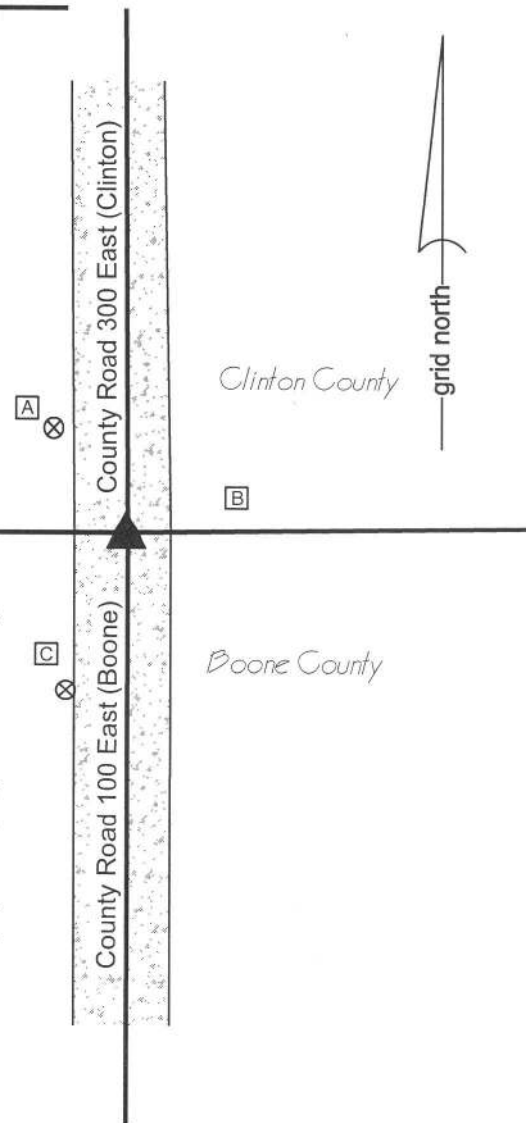
### CORNER WITNESS DETAIL

SCALE 1" = 30'



- A - Boone County witness mark, flush, 20.5'
- B - W. edge, metal "Clinton County" road sign post, flush, 12.8'
- C - Boone County witness mark, flush, 26.0'

Boone County witness mark is a 3/8" diameter x 2' long rebar bearing a metal cap stamped "Boone County Witness Point."



The Harrison monument was set over a stone found.

A BCS record dated April 26, 1870 states, with respect to this corner, "Reestablished from Ash stump. Set two Rocks. One 5 1/2.5.4 in. Top One 8.7 by 4 in. marked +." A BCS record dated August 18, 1879 states "Chopped notch out of B. Oak . Also found S.W. original stump and rock at corner. Clinton County Surveyor had set Rock N 18 W 14 links from proper place." A BCS tie card dated July 9, 1975 states "No Stone - Set Rod." An undated Clinton County tie card shows the corner as a "railroad iron." A tie to the corner post on the east side of the road shown on this card is 0.2 foot shorter than a tie to the same corner post as shown on the 1975 BCS tie card.

This corner was excavated on August 21, 2014. Prior to excavation, the top of a vertical section of railroad rail was found at the surface of the gravel road. Excavation revealed a stone found at 5 inches deep, southeast of the rail. The rail had been situated against the northwest edge of the stone. The found stone was triangular in shape, 4 inches tall and 7 inches NW/SE by 8 inches NE/SW by 8 inches N-S. The stone was removed and another stone was found below. This stone was 10 inches N-S by 5 inches E-W by 8 inches tall. No marks were found on either of these stones. The second stone found was also removed and a third stone was found below. This stone was at 16 inches deep and measured 8 inches E-W by 7 inches N-S by 5 1/2 inches tall. The bottom stone was of a generally round shape and bore a distinct etched "+" mark on top. This stone was temporarily removed from the road bed to enable probing below. No further hard objects were found below the third found stone.

Several irregularities exist with respect to the found monuments and the written record. For one, the 1975 tie card calls for a rod (interpreted to mean 'rebar') to have been set, not a rail. If the 1975 tie card and the Clinton County tie card measured to the same point on the post on east side of the road, the rod would have been 0.2 feet west of the rail. It is possible that the rod was removed but the rail remained. The source of the rail is not known. However, given the proximity of the rail to the found stones, it is considered unlikely that the rail could have been set without the party setting it observing the stones. It is logical to conclude that the rail was purposely set next to the stones. The stones do not match the dimensions described in the 1870 record. It is noted, though, that the lower stone matches two recorded dimensions of one rock and one recorded dimension from the other. It is possible that the creators of the 1870 record mixed the dimensions of the two stones. All of this uncertainty notwithstanding, it is noted that three rocks were found, all on top of each other and that the lower one bore a distinct mark etched on the top, center point of the rock. Also, as noted above, it is considered most likely that the rail was set as a witness to the stones, given the fact that it would have been difficult to physically set the rail without observing the presence of the stones. Assessing the above information, the lower most found stone was held as marking the corner. The stone was replaced in the position originally found and a Harrison monument was set directly over the etched "+" mark on the top of that stone. The rail had been 0.6 foot west and 0.3 feet north of this point. The rail and top two stones were removed.



*Kenneth E. Hedge*  
Kenneth E. Hedge, County Surveyor

*James S. Swift*  
James S. Swift, IN LS 20200054, March 27, 2015

Jackson Township  
Clinton County  
Clinton Township  
Boone County

Section 18 T20N, R1E	Section 17 T20N, R1E
-------------------------	-------------------------

PHOTOGRAPHIC DOCUMENTATION

Date of photography: 8/21/2014

The top most stone as originally found.



The second stone found. i.e. the middle stone.



The lower stone, view from above and south.



The lower stone, view from above and north. The etched '+' mark on the top of the stone is highlighted for east of visual detection.



View from the north, looking across the middle stone and south along County Road 100 East. The upper stone is to the left in this picture.



For details and documentation, refer to related sheet "Section Corner Record."

# SECTION CORNER RECORD

# NE 950-200

## BOONE COUNTY SURVEYOR'S OFFICE

State Plane grid coordinates NAD83 (CORS96):

North: 1795845.69 East: 3134806.31 (U.S. survey feet)

Type of monument: Harrison, 4" disk 'Section Corner'

Depth: flush with adjacent road surface

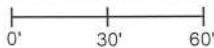
Indiana tie card references:

IN02\_T20NR1E17\_44

IN02\_T20NR1E16\_36

### CORNER WITNESS DETAIL

SCALE 1" = 60'



Clinton County

Boone County

- A - Mag nail set in E. side power pole, 3' a.g., 15.6'
- B - Boone County witness mark, flush, 13.4
- C - N.E. corner, stone bridge structure, road level, 19.1'
- D - N.W. corner, stone bridge structure, road level, 19.1'

Boone County witness mark is a 3/8" diameter x 2' long rebar bearing a metal cap stamped "Boone County Witness Point."

The Harrison monument was set over a railroad rail found.

No specific descriptions of this corner were found in the BCS Surveyor's Record, though the corner is shown as a terminal point for lines and measurements in a record of January 14, 1915. A BCS tie card dated November 19, 1971 states, with respect to this corner, "No stone - RRR put in." This document graphically demonstrates the corner to be in the center of County Road 200 East and in line with a fence to the west. A Clinton County tie card dated October 15, 1981 shows the corner to be a bolt over a railroad rail.

As this corner falls in an area of substantial fill immediately north of the Scotland Bridge over Sugar Creek, no significant excavation was performed. A Bolt was found at 5 inches in a hole in the asphalt, in agreement with the ties on both of the known tie cards. It is noted that the bolt is at the westerly prolongation of the center of the County Line Road and fits very well with the relative position of stones found at the corners 1/2 mile and 3/4 mile east, respectively. Please refer to documentation for corner NE 950-250.

The bolt was removed and the top of a vertical section of railroad rail was found directly below at 8 inches deep. The bolt was 1/2 inch diameter, with a threaded shaft 15 inches long. The shaft was next to the thin part of the rail, though the head of the bolt had been directly over the center of the top of the rail. The rail and bolt were accepted as the best available evidence of the corner. The top 5 inches of the rail were exposed, 2 foot lengths of 3/8 inch diameter rebars were driven at angles on the east and west sides of the rail. The top of the rail and rebars were encased in concrete and a Harrison monument was set over the rail, in the same horizontal position at which the head of the bolt had originally been found.

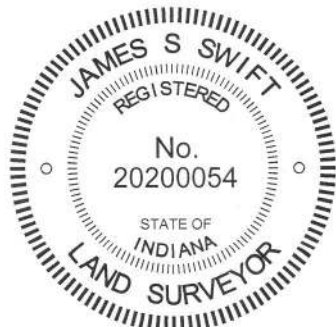
This corner was originally established as a wood post in 1822.

Clinton County  
Road 400 East

Scotland Bridge  
(concrete arch)

Boone County  
Road 200 East

Sugar Creek



*Kenneth E. Hedge*  
 \_\_\_\_\_  
 Kenneth E. Hedge, County Surveyor

*James S. Swift*  
 \_\_\_\_\_  
 James S. Swift, IN LS 20200054  
 March 27, 2015

Clinton Township  
Boone County

Jackson Township  
Clinton County

Kirklintownship  
Clinton County

Section 17 T20N, R1E	Section 16 T20N, R1E
-------------------------	-------------------------