

SECTION CORNER RECORD

NW 300-400

BOONE COUNTY SURVEYOR'S OFFICE

State Plane grid coordinates NAD83 (2011):

North: 1761322.07 East: 3103613.54 (U.S. survey feet)

Type of monument: Harrison, 4" disk 'Section Corner'

Depth: One inch below adjacent road surface

Indiana tie card references:

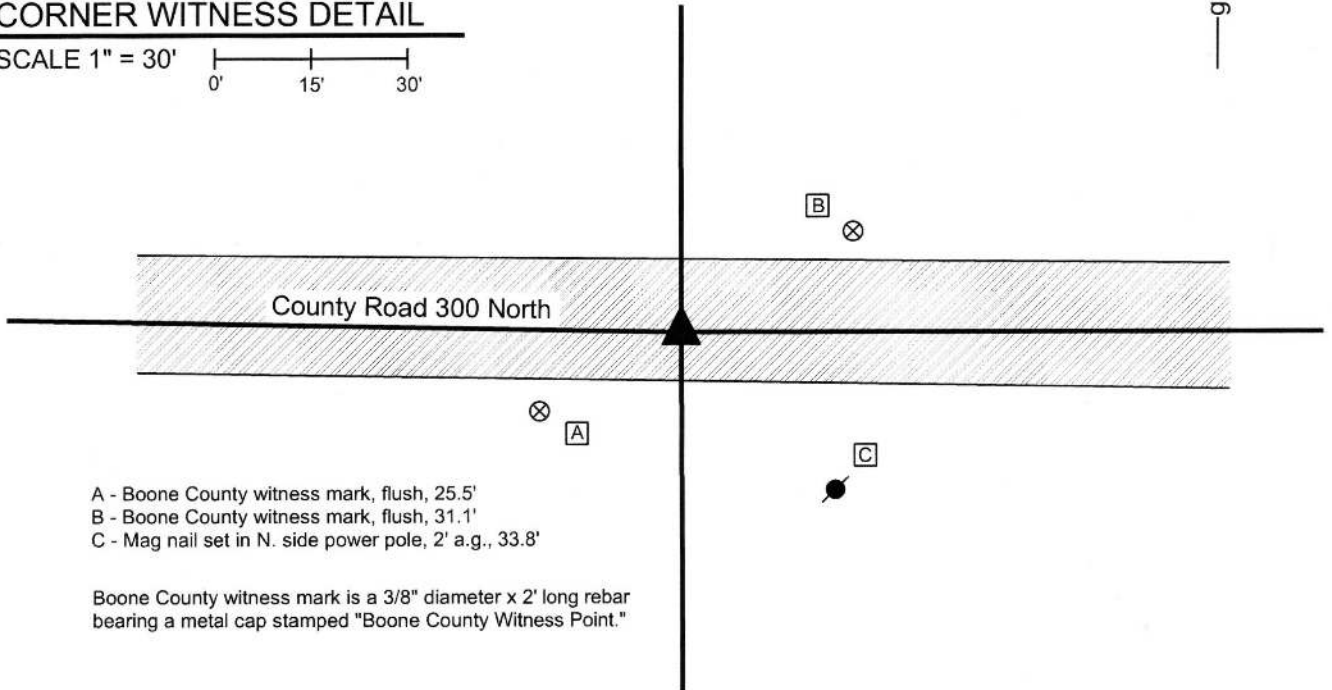
IN02_T19NR1W17_80 IN02_T19NR1W16_72

IN02_T19NR1W20_08 IN02_T19NR1W21_00



CORNER WITNESS DETAIL

SCALE 1" = 30'



- A - Boone County witness mark, flush, 25.5'
- B - Boone County witness mark, flush, 31.1'
- C - Mag nail set in N. side power pole, 2' a.g., 33.8'

Boone County witness mark is a 3/8" diameter x 2' long rebar bearing a metal cap stamped "Boone County Witness Point."

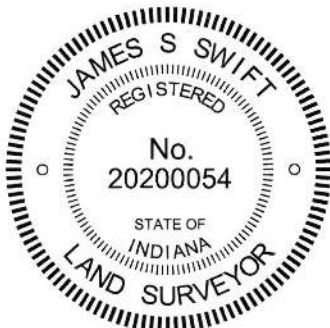
The Harrison monument was set over a vertical section of railroad rail found.

A BCS record of April 8, 1878 states, with respect to this corner, "Set Rock." A BCS tie card dated June 3, 1971 states "Stone located. Replaced stone with RRR."

This corner was excavated on July 2, 2015. Prior to excavation, a railroad spike was found at 3 inches deep in a hole in the asphalt roadway.

Excavation revealed a vertical section of railroad rail found at 13 inches deep. The rail was found to be 0.4 foot west and 0.1 foot north of the railroad spike. Substantial further excavation was not performed, given the statement on the 1971 tie card that the found stone was replaced with a railroad rail. The rail was left in place. The top of the rail was encased in concrete and a Harrison monument was set directly over the rail.

This corner was originally established as a wood post in 1819.



Kenneth E. Hedge, County Surveyor

James S. Swift, IN LS 20200054
March 24, 2016

Washington Township

Section 17 T19N, R1W	Section 16 T19N, R1W
Section 20 T19N, R1W	Section 21 T19N, R1W

Jefferson
Township

Center
Township

SECTION CORNER RECORD

NW 300-450

BOONE COUNTY SURVEYOR'S OFFICE

State Plane grid coordinates NAD83 (2011):

North: 1761375.64 East: 3100965.67 (U.S. survey feet)

Type of monument: Harrison, 4" disk 'Section Corner'

Depth: One inch below adjacent road surface

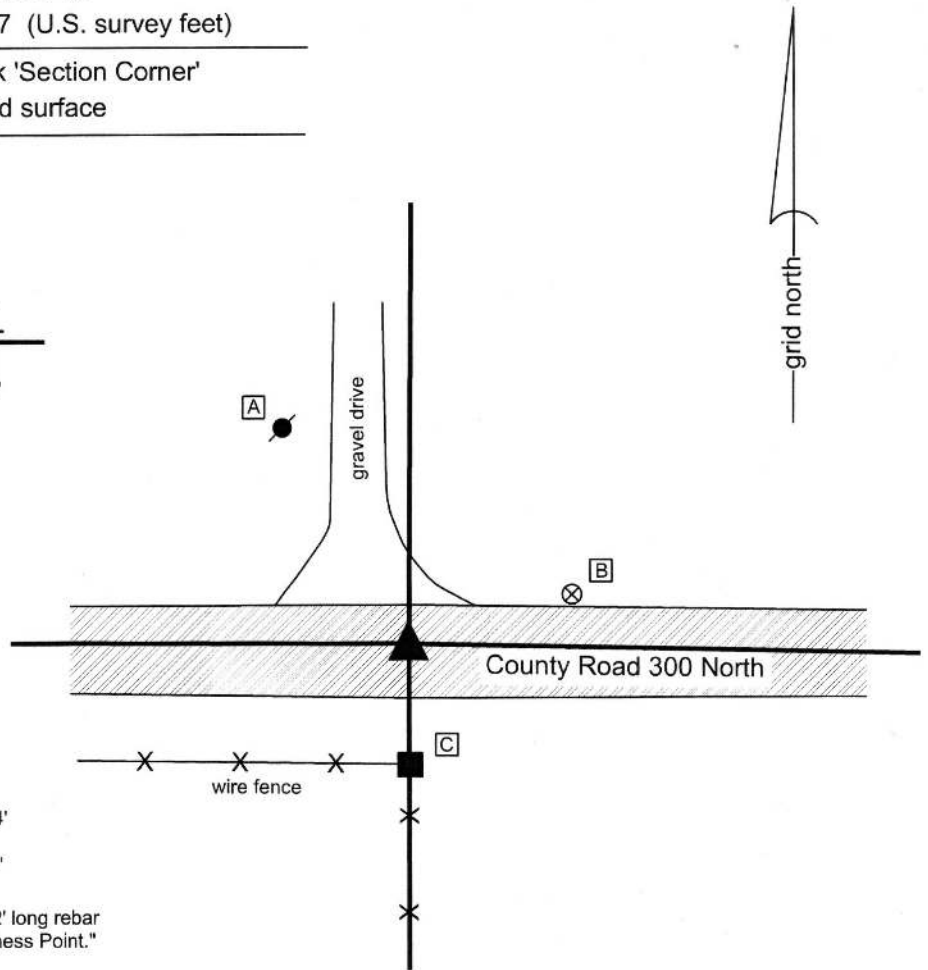
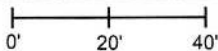
Indiana tie card references:

IN02_T19NR1W17_76

IN02_T19NR1W20_04

CORNER WITNESS DETAIL

SCALE 1" = 40'



A - Mag nail set in S. side power pole, 2' a.g., 50.4'

B - Boone County witness mark, flush, 35.3'

C - Mag nail set in N. side wood post, 2' a.g., 25.0'

Boone County witness mark is a 3/8" diameter x 2' long rebar bearing a metal cap stamped "Boone County Witness Point."

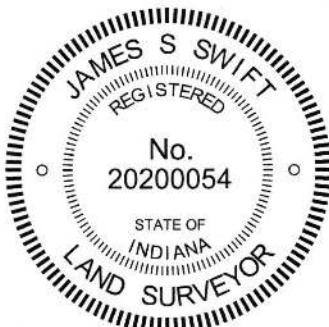
The Harrison monument was set over a stone found.

No specific descriptions of this corner were found in the BCS Surveyor's Record. A BCS tie card dated June 1, 1971 states "Stone Located. RRR slanted over stone."

This corner was excavated on July 1, 2015. Prior to excavation, a railroad spike was found at the surface of the road. Excavation revealed another railroad spike found at 4 inches deep, slightly N.E. of the upper spike. Further excavation revealed a section of railroad rail found at 11 inches deep. The rail was clearly leaning towards the south. The first found railroad spike had been located approximately over the highest point of the leaning rail, being at the south edge of the rail. Two rebars were also found adjacent to the rail. Both were situated horizontally, as found, on the E & W sides of the rail, respectively. The rail and rebars were removed and a stone was found at 18 inches deep. The stone had a distinct, sharp, high point which was 0.2 foot west and 0.1 foot south of the first found spike and the high point of the rail. The top 6 inches of the stone were exposed. At 6 inches below the top, the stone measured 7 inches E-W by 5 inches N-S and appeared that it was likely much larger in all dimensions. The distinct, sharp high point of the stone was at the east end of a distinct ridge across the top of the stone.

The high point of the stone was held as the exact point of the corner and a Harrison monument was set over this point. The rail and both railroad spikes were removed during excavation.

This corner was originally established as a wood post in 1829.



Kenneth E. Hedge, County Surveyor

James S. Swift, IN LS 20200054
March 24, 2016

Washington
Township

Section 17
T19N, R1W

Jefferson
Township

Section 20
T19N, R1W

PHOTOGRAPHIC DOCUMENTATION

Date of photography: July 1, 2015

The section of leaning railroad rail, exposed with the high point painted pink.



The stone as it was originally exposed.



The stone from above.



The stone viewed from the south.



View from above the stone looking south along the fence line south of County Road 300 North.



View from above the stone looking west along County Road 300 North.



For details and documentation, refer to related sheet "Section Corner Record."

SECTION CORNER RECORD

NW 300-500

BOONE COUNTY SURVEYOR'S OFFICE

State Plane grid coordinates NAD83 (2011):

North: 1761383.99 East: 3098337.82 (U.S. survey feet)

Type of monument: Harrison, 4" disk 'Section Corner'

Depth: One inch below adjacent road surface

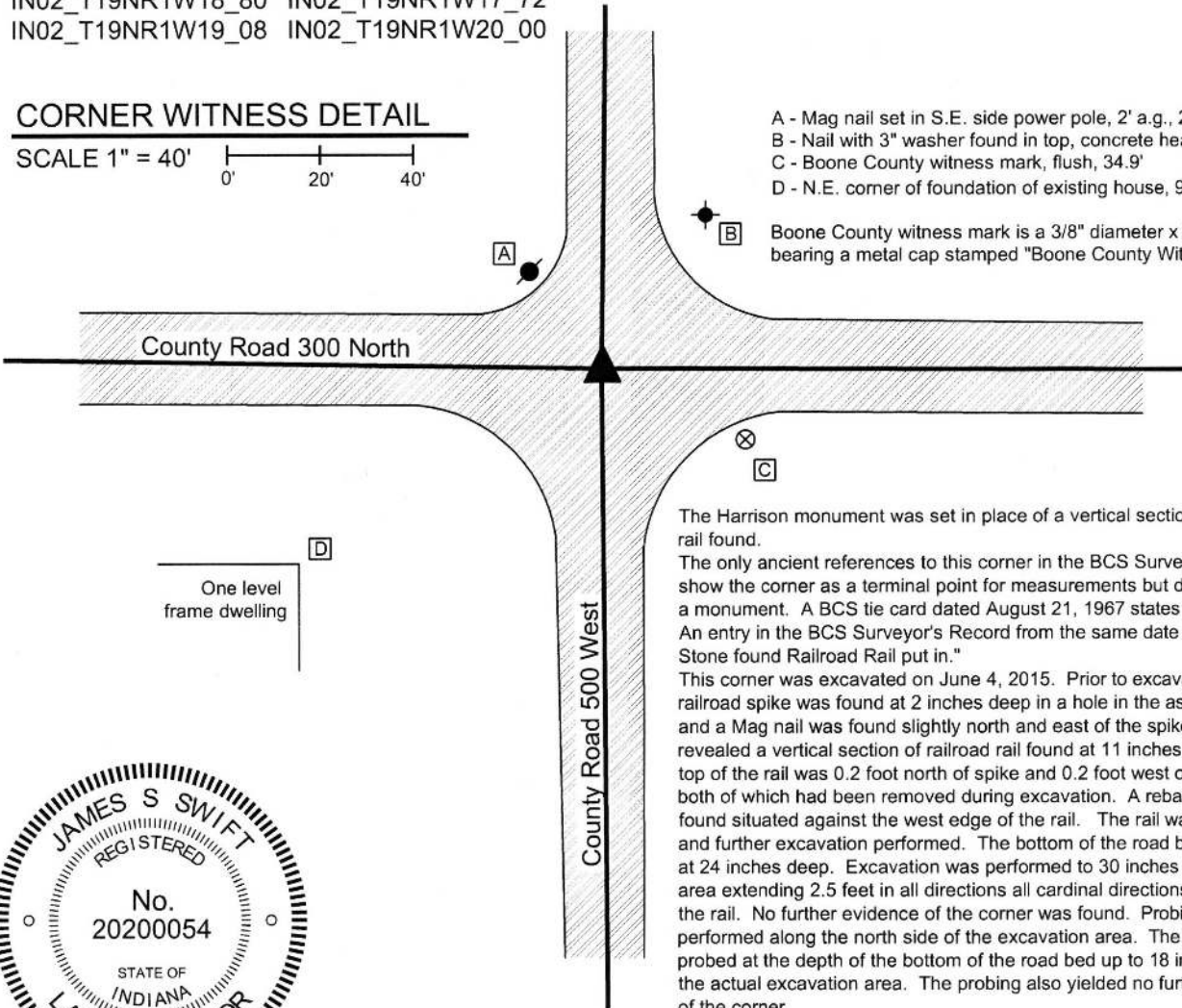
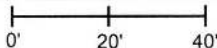
Indiana tie card references:

IN02_T19NR1W18_80 IN02_T19NR1W17_72
IN02_T19NR1W19_08 IN02_T19NR1W20_00



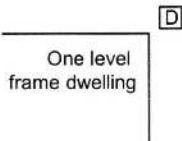
CORNER WITNESS DETAIL

SCALE 1" = 40'



- A - Mag nail set in S.E. side power pole, 2' a.g., 24.4'
- B - Nail with 3" washer found in top, concrete headwall, 40.0'
- C - Boone County witness mark, flush, 34.9'
- D - N.E. corner of foundation of existing house, 92.9'

Boone County witness mark is a 3/8" diameter x 2' long rebar bearing a metal cap stamped "Boone County Witness Point."



The Harrison monument was set in place of a vertical section of railroad rail found.

The only ancient references to this corner in the BCS Surveyor's Record show the corner as a terminal point for measurements but do not describe a monument. A BCS tie card dated August 21, 1967 states "No stone." An entry in the BCS Surveyor's Record from the same date states "No Stone found Railroad Rail put in."

This corner was excavated on June 4, 2015. Prior to excavation, a railroad spike was found at 2 inches deep in a hole in the asphalt roadway and a Mag nail was found slightly north and east of the spike. Excavation revealed a vertical section of railroad rail found at 11 inches deep. The top of the rail was 0.2 foot north of spike and 0.2 foot west of the mag nail, both of which had been removed during excavation. A rebar was also found situated against the west edge of the rail. The rail was removed and further excavation performed. The bottom of the road bed was found at 24 inches deep. Excavation was performed to 30 inches deep in an area extending 2.5 feet in all directions all cardinal directions, centered on the rail. No further evidence of the corner was found. Probing was performed along the north side of the excavation area. The ground was probed at the depth of the bottom of the road bed up to 18 inches north of the actual excavation area. The probing also yielded no further evidence of the corner.

The railroad rail fit with local evidence of the corner in the form of the approximate centers of the roads which extended in all cardinal directions from the corner. The rail was held as marking the corner. The rail was removed during excavation and a Harrison monument was set in the same position as the rail.

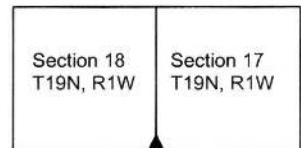
This corner was originally established as a wood post in 1829.



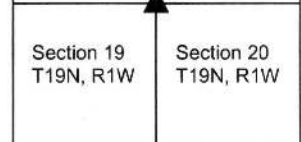
Kenneth E. Hedge
Kenneth E. Hedge, County Surveyor

James S. Swift
James S. Swift, IN LS 20200054
March 24, 2016

Washington Township



Jefferson Township



SECTION CORNER RECORD

NW 350-500

BOONE COUNTY SURVEYOR'S OFFICE

State Plane grid coordinates NAD83 (2011):

North: 1764033.19 East: 3098361.49 (U.S. survey feet)

Type of monument: Harrison, 4" disk 'Section Corner'

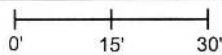
Depth: One inch below adjacent road surface

Indiana tie card references:

IN02_T19NR1W18_44 IN02_T19NR1W17_36

CORNER WITNESS DETAIL

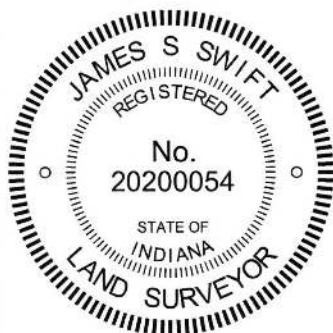
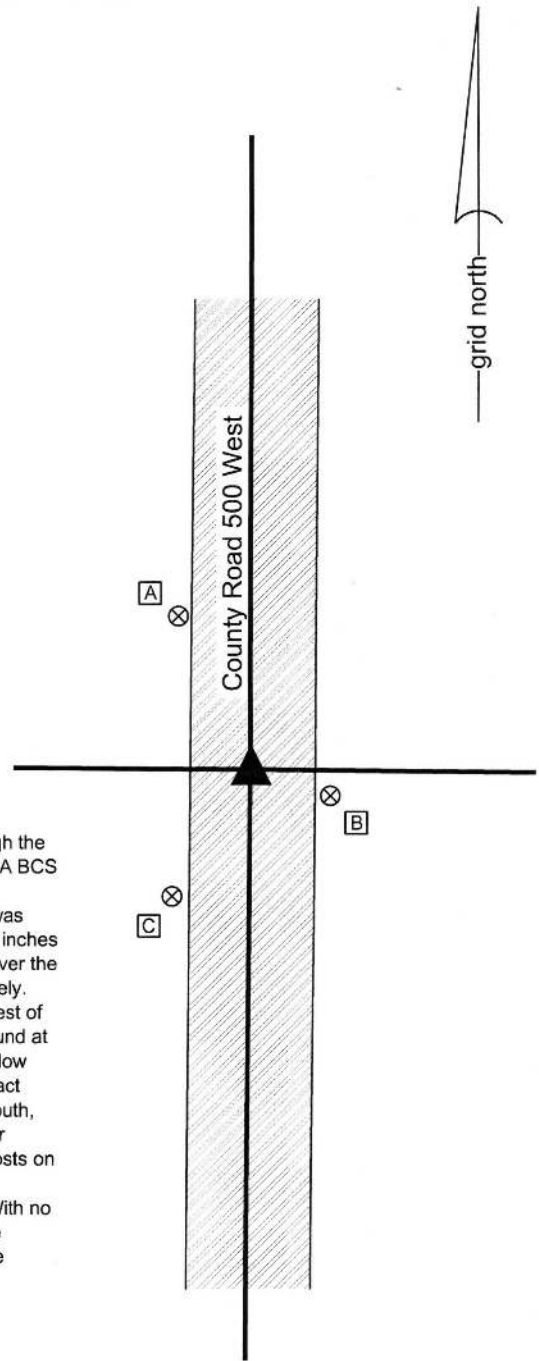
SCALE 1" = 30'



- A - Boone County witness mark, flush, 23.3'
- B - Boone County witness mark, flush, 13.2'
- C - Boone County witness mark, flush, 23.2'

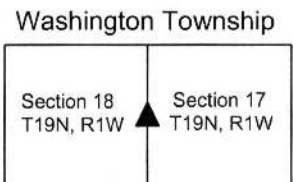
Boone County witness mark is a 3/8" diameter x 2' long rebar bearing a metal cap stamped "Boone County Witness Point."

The Harrison monument was set in place of a vertical section of railroad rail found. No specific descriptions of this corner were found in the BCS Surveyor's Record, though the corner is shown as the terminal point for measurements in records of 1838 and 1865. A BCS tie card for this corner dated June 3, 1971 states "No Stone. RRR put in." This corner was excavated on June 5, 2015. Prior to excavation, an uncapped rebar was found at the surface of the asphalt road. Excavation revealed a railroad rail found at 9 inches deep and two other rebars, both slightly shallower. None of the rebars were directly over the rail but all three were within six inches, being N.W., S.W. and N.E. of the rail, respectively. Excavation of an area extending 2.5 feet north, 2 feet east, 2.5 feet south and 5 feet west of the rail revealed no further evidence of the corner. The bottom of the road bed was found at approximately 16 inches. Excavation was performed to a depth of at least 2 inches below the bottom of the road bed. It is noted that excavation was extended west due to the fact that the corner is east of a straight line between the section corners to the north and south, along with the fact that the 1971 tie card demonstrates, by distance ties, that the corner established at that time was 3.5 feet east of the midpoint between the fence corners posts on the east and west sides of the road, respectively. The posts are no longer present. The rail was accepted as being the same monument called for on the 1971 tie card. With no contrary evidence found, the rail was held as marking the corner. The rail and all three rebars were removed during excavation and a Harrison monument was set in the same position as the rail. This corner was originally established as a wood post in 1829.



Kenneth E. Hedge
 Kenneth E. Hedge, County Surveyor

James S. Swift
 James S. Swift, IN LS 20200054
 March 24, 2016



SECTION CORNER RECORD

BOONE COUNTY SURVEYOR'S OFFICE

NW 400-400

State Plane grid coordinates NAD83 (2011):
 North: 1766617.92 East: 3103604.40 (U.S. survey feet)

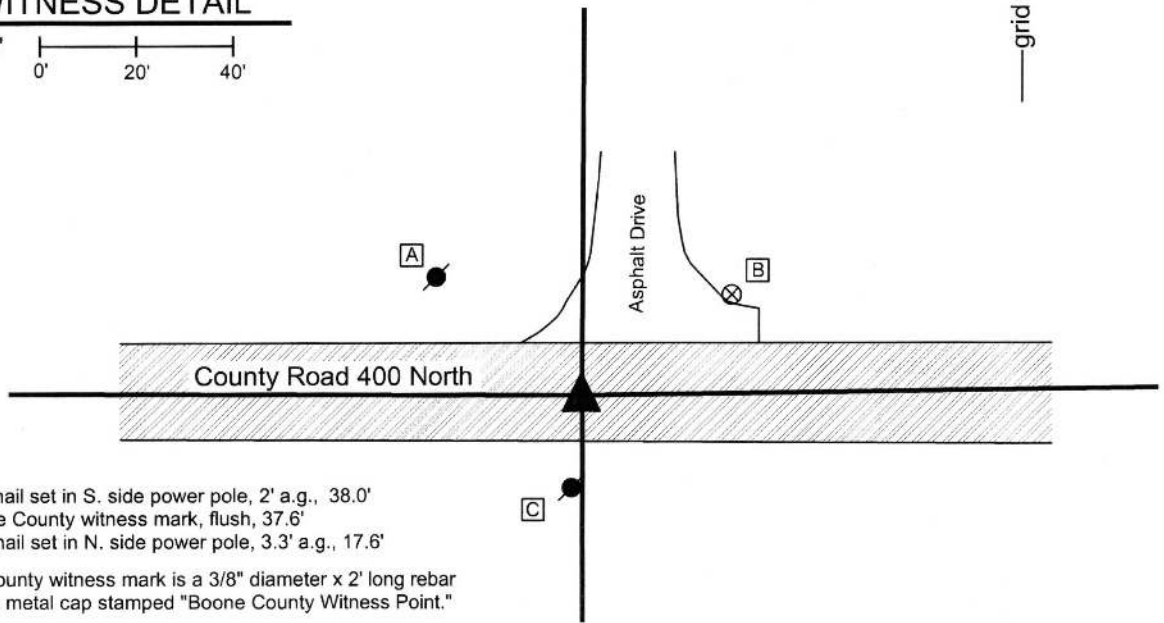
Type of monument: Harrison, 4" disk 'Section Corner'
 Depth: One inch below adjacent road surface

Indiana tie card references:
 IN02_T19NR1W07_80 IN02_T19NR1W08_72
 IN02_T19NR1W18_08 IN02_T19NR1W17_00



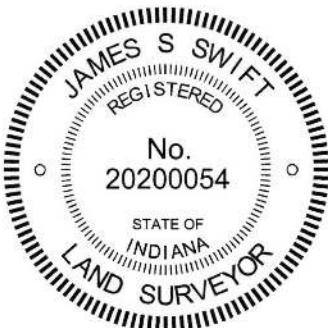
CORNER WITNESS DETAIL

SCALE 1" = 40'



- A - Mag nail set in S. side power pole, 2' a.g., 38.0'
 - B - Boone County witness mark, flush, 37.6'
 - C - Mag nail set in N. side power pole, 3.3' a.g., 17.6'
- Boone County witness mark is a 3/8" diameter x 2' long rebar bearing a metal cap stamped "Boone County Witness Point."

The Harrison monument was set in place of a vertical section of railroad rail found. No specific descriptions of this corner were found in the BCS Surveyor's Record, though the corner is mentioned as the terminal point for measurements in records of 1837 and 1859. A BCS tie card dated March 14, 1970 states "no stone." This corner was excavated on June 26, 2015. Prior to excavation, a Mag nail was found at the surface of the road. Excavation revealed a vertical section of railroad rail at 12 inches deep, slightly N.W. of the nail. Further excavation of an area extending 3 feet north, 2 feet south, 2.5 feet east and 2.5 feet west of the nail and rail revealed no further evidence of the corner. The bottom of the road bed was found at 16 to 18 inches deep. Excavation was performed to approximately 20 inches. Evidence of an old drainage tile was found at the east edge of the area of excavation, indicating some previous disruption to the ground in the vicinity of the corner. Numerous small rocks were found in the base layer of the road but none of them had the characteristics of a specifically set corner stone. Though the 1970 tie card made no mention of the railroad rail, a pencil notation put in the BCS Surveyor's record from the same date (3/14/1970) states "No stone - set railroad rail." The rail was held as marking the corner. The rail was removed during excavation and a Harrison monument was set in the position of the rail. The Mag nail had been 0.2 foot south and 0.2 foot east of this point. This corner was originally established as a wood post in 1829.



Kenneth E. Hedge, County Surveyor

James S. Swift, IN LS 20200054
 March 24, 2016

Washington Township

Section 8 T19N, R1W	Section 9 T19N, R1W
Section 17 T19N, R1W	Section 16 T19N, R1W

SECTION CORNER RECORD

BOONE COUNTY SURVEYOR'S OFFICE

NW 400-450

State Plane grid coordinates NAD83 (2011):

North: 1766628.12 East: 3100987.25 (U.S. survey feet)

Type of monument: Harrison, 4" disk 'Section Corner'

Depth: One inch below adjacent road surface

Indiana tie card references:

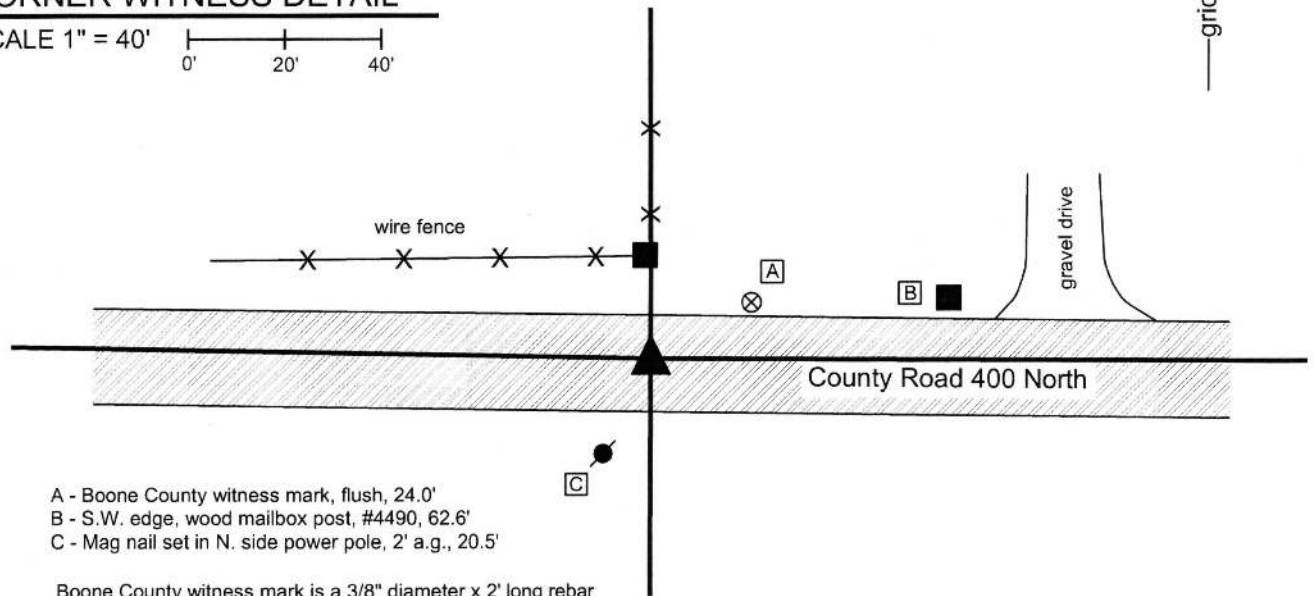
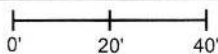
IN02_T19NR1W17_76

IN02_T19NR1W20_04



CORNER WITNESS DETAIL

SCALE 1" = 40'



- A - Boone County witness mark, flush, 24.0'
- B - S.W. edge, wood mailbox post, #4490, 62.6'
- C - Mag nail set in N. side power pole, 2' a.g., 20.5'

Boone County witness mark is a 3/8" diameter x 2' long rebar bearing a metal cap stamped "Boone County Witness Point."

The Harrison monument was set in place of a vertical section of railroad rail found.

No specific descriptions of this corner were found in the BCS Sureyor's Record beyond the original establishment of the corner as a wood post in 1829 and a pencil notation dated March 9, 1970 which states "No Stone - set railroad rail." A BCS tie card from the same date simply states "No Stone."

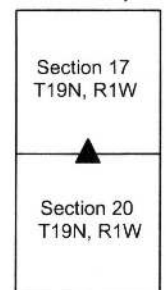
This corner was excavated on April 27, 2015. Prior to excavation, a Mag nail was found at the surface of the asphalt roadway. Excavation revealed a railroad rail found at 7 inches deep, slightly S.W. of the Mag nail. Further excavation of an area extending 2.5 feet in all cardinal directions centered on the nail and rail produced no further evidence of the corner. Excavation was performed to a minimum of 30 inches deep, well into the clay layer below the road bed. The railroad rail was held as marking the corner. The rail was removed during excavation and was replaced with a Harrison monument in the same position. The Mag nail had been 0.15 east and 0.1 foot north of this point.



Kenneth E. Hedge
 Kenneth E. Hedge, County Surveyor

James S. Swift
 James S. Swift, IN LS 20200054
 March 24, 2016

Washington Township



SECTION CORNER RECORD

NW 400-500

BOONE COUNTY SURVEYOR'S OFFICE

State Plane grid coordinates NAD83 (2011):

North: 1766677.97 East: 3098367.67 (U.S. survey feet)

Type of monument: Harrison, 4" disk 'Section Corner'

Depth: One inch below adjacent road surface

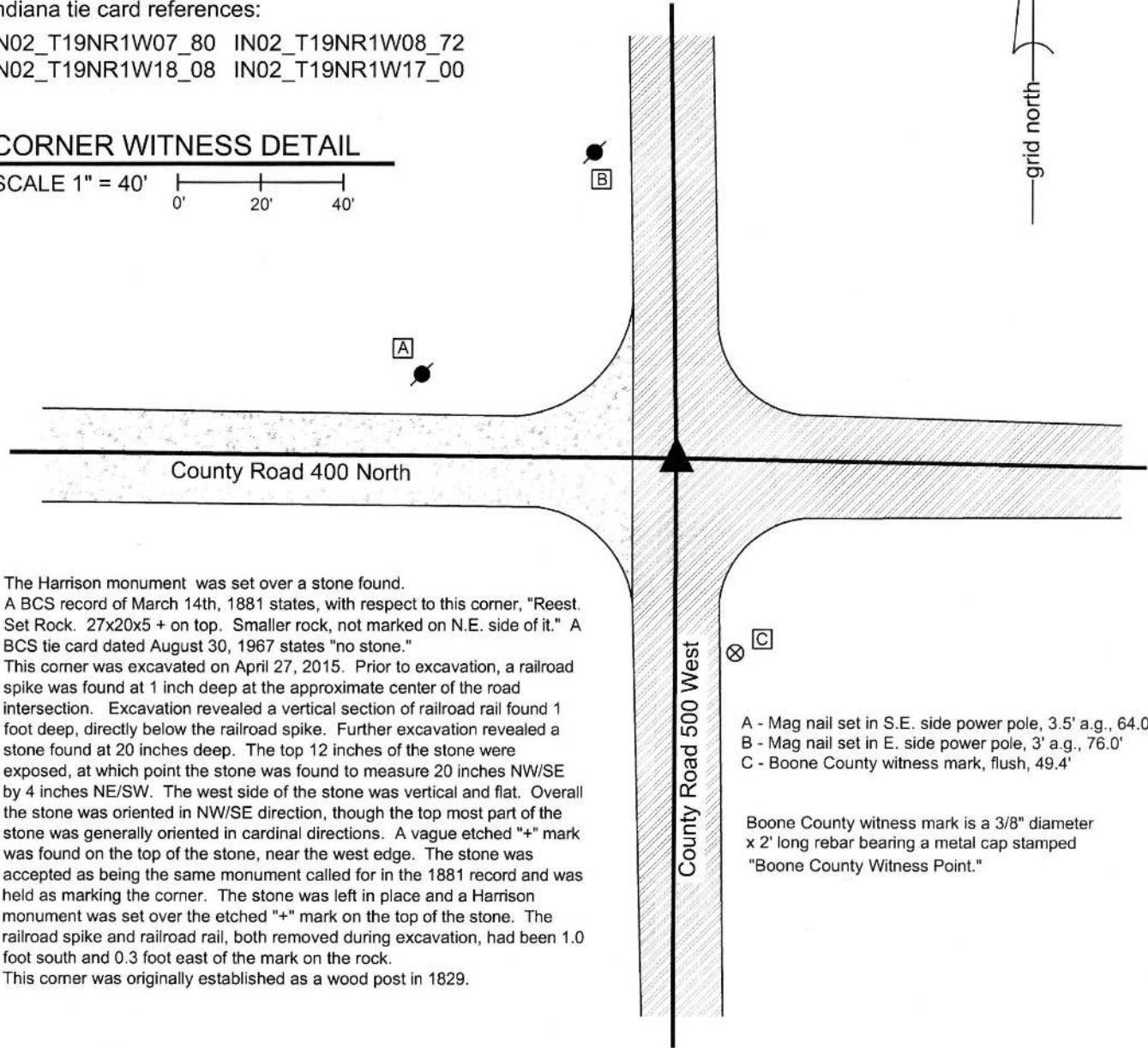
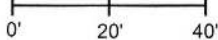
Indiana tie card references:

IN02_T19NR1W07_80 IN02_T19NR1W08_72

IN02_T19NR1W18_08 IN02_T19NR1W17_00

CORNER WITNESS DETAIL

SCALE 1" = 40'



The Harrison monument was set over a stone found. A BCS record of March 14th, 1881 states, with respect to this corner, "Reest. Set Rock. 27x20x5 + on top. Smaller rock, not marked on N.E. side of it." A BCS tie card dated August 30, 1967 states "no stone." This corner was excavated on April 27, 2015. Prior to excavation, a railroad spike was found at 1 inch deep at the approximate center of the road intersection. Excavation revealed a vertical section of railroad rail found 1 foot deep, directly below the railroad spike. Further excavation revealed a stone found at 20 inches deep. The top 12 inches of the stone were exposed, at which point the stone was found to measure 20 inches NW/SE by 4 inches NE/SW. The west side of the stone was vertical and flat. Overall the stone was oriented in NW/SE direction, though the top most part of the stone was generally oriented in cardinal directions. A vague etched "+" mark was found on the top of the stone, near the west edge. The stone was accepted as being the same monument called for in the 1881 record and was held as marking the corner. The stone was left in place and a Harrison monument was set over the etched "+" mark on the top of the stone. The railroad spike and railroad rail, both removed during excavation, had been 1.0 foot south and 0.3 foot east of the mark on the rock. This corner was originally established as a wood post in 1829.

- A - Mag nail set in S.E. side power pole, 3.5' a.g., 64.0'
- B - Mag nail set in E. side power pole, 3' a.g., 76.0'
- C - Boone County witness mark, flush, 49.4'

Boone County witness mark is a 3/8" diameter x 2' long rebar bearing a metal cap stamped "Boone County Witness Point."



Kenneth E. Hedge
Kenneth E. Hedge, County Surveyor

James S. Swift
James S. Swift, IN LS 20200054
March 24 2016

Washington Township

Section 7 T19N, R1W	Section 8 T19N, R1W
Section 18 T19N, R1W	Section 17 T19N, R1W