

SECTION CORNER RECORD

SE 200-700

BOONE COUNTY SURVEYOR'S OFFICE

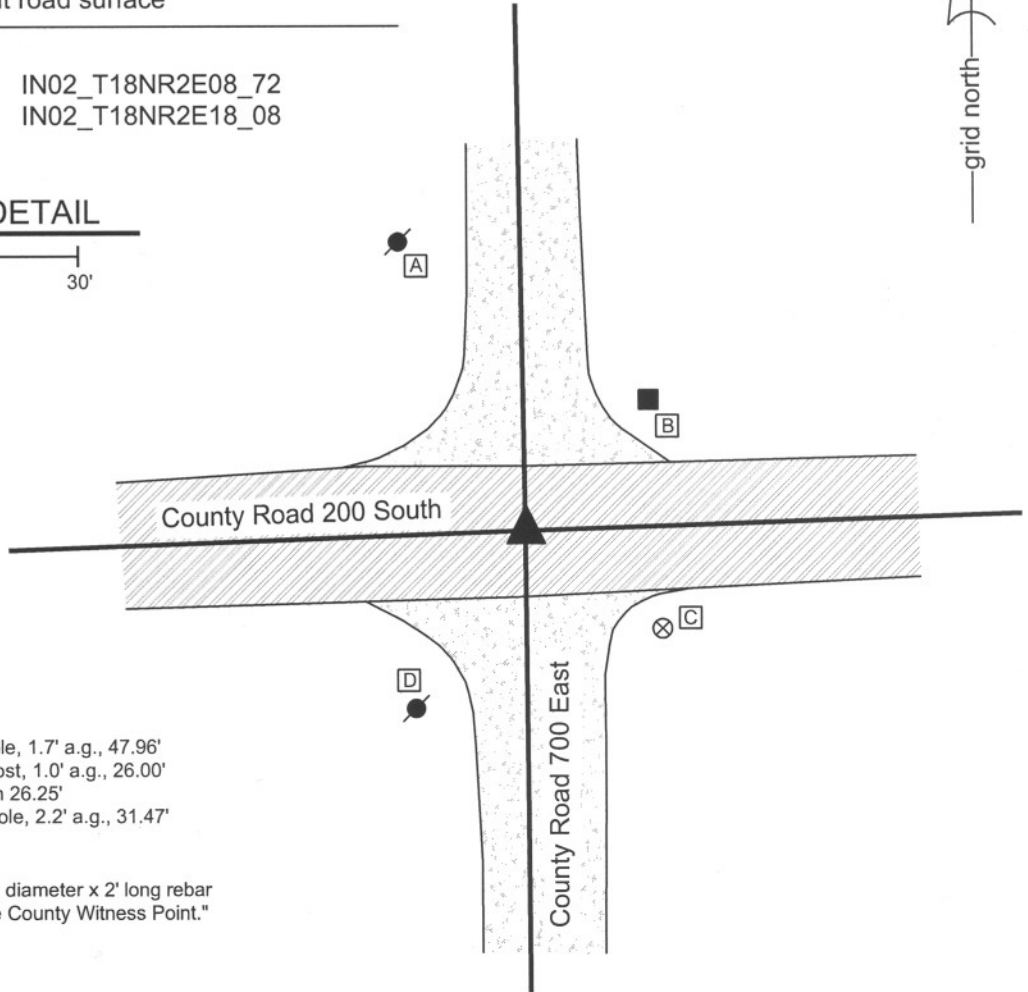
State Plane grid coordinates NAD83 (NSRS 2007):
North: 1735870.87 East: 3161948.65 (U.S. survey feet)

Type of monument: Harrison, 4" disk 'Section Corner'
Depth: 1 inch below adjacent road surface

Indiana tie card references:
IN02_T18NR2E07_80 IN02_T18NR2E08_72
IN02_T18NR2E17_00 IN02_T18NR2E18_08

CORNER WITNESS DETAIL

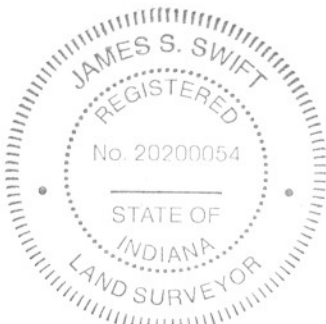
SCALE 1" = 30'
0' 15' 30'



- A - Mag Nail set in S.E. side powerpole, 1.7' a.g., 47.96'
- B - Mag Nail set in S.W. side wood post, 1.0' a.g., 26.00'
- C - Boone County witness mark, flush 26.25'
- D - Mag Nail set in N.E. side power pole, 2.2' a.g., 31.47'

Boone County witness mark is a 3/8" diameter x 2' long rebar bearing a metal cap stamped "Boone County Witness Point."

The harrison monument was set in place of a railroad rail found. A BCS record of August 17, 1869 states "found from stump of Oak and reestablished drove stake under a rock 16,13.6 +..." A BCS tie card of July 1970 states "no stone, set rail." The railroad rail was found 8 inches below grade in the approximate center of County Road 200 South, slightly west of the apparent physical intersection of said road with County Road 700 East. A four foot N-S by 7 foot E-W area, centered on the rail in the N-S dimension and extended to 5.5 feet east of the rail, was excavated on April 4, 2008. The record stone was not found, nor was any other monument found. Signs of significant disturbance were detected in the gravel layer at the bottom of the road. Excavation was performed to a depth of 2.5 feet and the main layer of clay begins at approximately 2 feet. All sides of the hole were probed every 4 to 6 inches for a minimum of 2 foot penetration into the surrounding area. The railroad rail was replaced with a harrison monument. This corner was originally established as a wood post in July 1821.



Kenneth E. Hedge
Kenneth E. Hedge, County Surveyor

James S. Swift
James S. Swift, IN LS 20200054
March 11, 2009

Worth Township

Section 7 T18N, R2E	Section 8 T18N, R2E
Section 18 T18N, R2E	Section 17 T18N, R2E

SECTION CORNER RECORD

SE 200-750

BOONE COUNTY SURVEYOR'S OFFICE

State Plane grid coordinates NAD83 (NSRS 2007):

North: 1735956.56 East: 3164575.03 (U.S. survey feet)

Type of monument: Harrison, 4" disk 'Section Corner'

Depth: One inch below adjacent road surface.

Indiana tie card references:

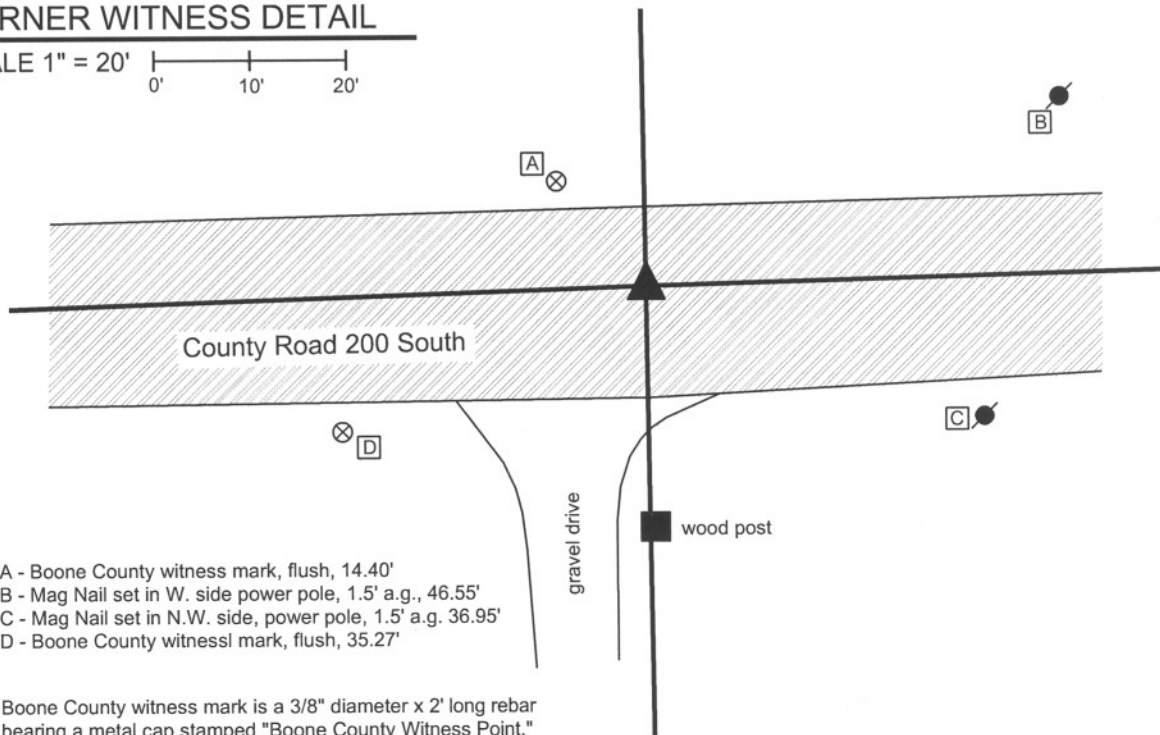
IN02_T18NR2E08_76

IN02_T18NR2E17_04



CORNER WITNESS DETAIL

SCALE 1" = 20'
0' 10' 20'



- A - Boone County witness mark, flush, 14.40'
- B - Mag Nail set in W. side power pole, 1.5' a.g., 46.55'
- C - Mag Nail set in N.W. side, power pole, 1.5' a.g. 36.95'
- D - Boone County witness mark, flush, 35.27'

Boone County witness mark is a 3/8" diameter x 2' long rebar bearing a metal cap stamped "Boone County Witness Point."

The Harrison monument was set directly over the chiseled + on a stone found.

A BCS record of August 17, 1869 states "Reest from stump of trees. Set rock 16.7 by 7 marked +." A 1991 BCS tie card calls for a 5/8 inch rebar found. The source of the rebar is not known. This corner was excavated on April 7, 2008. Prior to excavation, the rebar was visible, 8 inches deep in a hole in the asphalt. Excavation yielded another, disturbed rebar in a vague position. Excavation also yielded the record stone found at 12 inches below grade, protruding approximately 4 inches out of the clay layer into the road base. The stone measures 7 inches by 7 inches at the top with a clearly discernable "+" chiseled in the top. The stone falls on a line which represents a one rod (16.5 feet) offset from fence posts on the north side of the road to both the east and west. The stone is in line with an old fence line to the north and in line with a post and tree line to the south. The rebar, removed during excavation, was 1.6 feet south and 0.8 feet east of the chiseled "+" on the stone.

This corner was originally established as a wood post in July 1821.

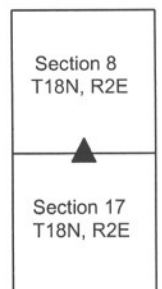


Kenneth E. Hedge
Kenneth E. Hedge, County Surveyor

James S. Swift
James S. Swift, IN LS 20200054

March 11, 2009

Worth Twp



PHOTOGRAPHIC DOCUMENTATION

Date of photography: April 7, 2008

Corner stone - view from East.



Corner stone - close up from East.



Corner stone - view from South.



Corner stone - view from North.



For details and documentation, refer to related sheet "Section Corner Record."

SECTION CORNER RECORD

SE 200-800

BOONE COUNTY SURVEYOR'S OFFICE

State Plane grid coordinates NAD83 (NSRS 2007):

North: 1736025.67 East: 3167202.92 (U.S. survey feet)

Type of monument: Harrison, 4" disk 'Section Corner'

Depth: flush with adjacent road surface

Indiana tie card references:

IN02_T18NR2E08_80

IN02_T18NR2E09_72

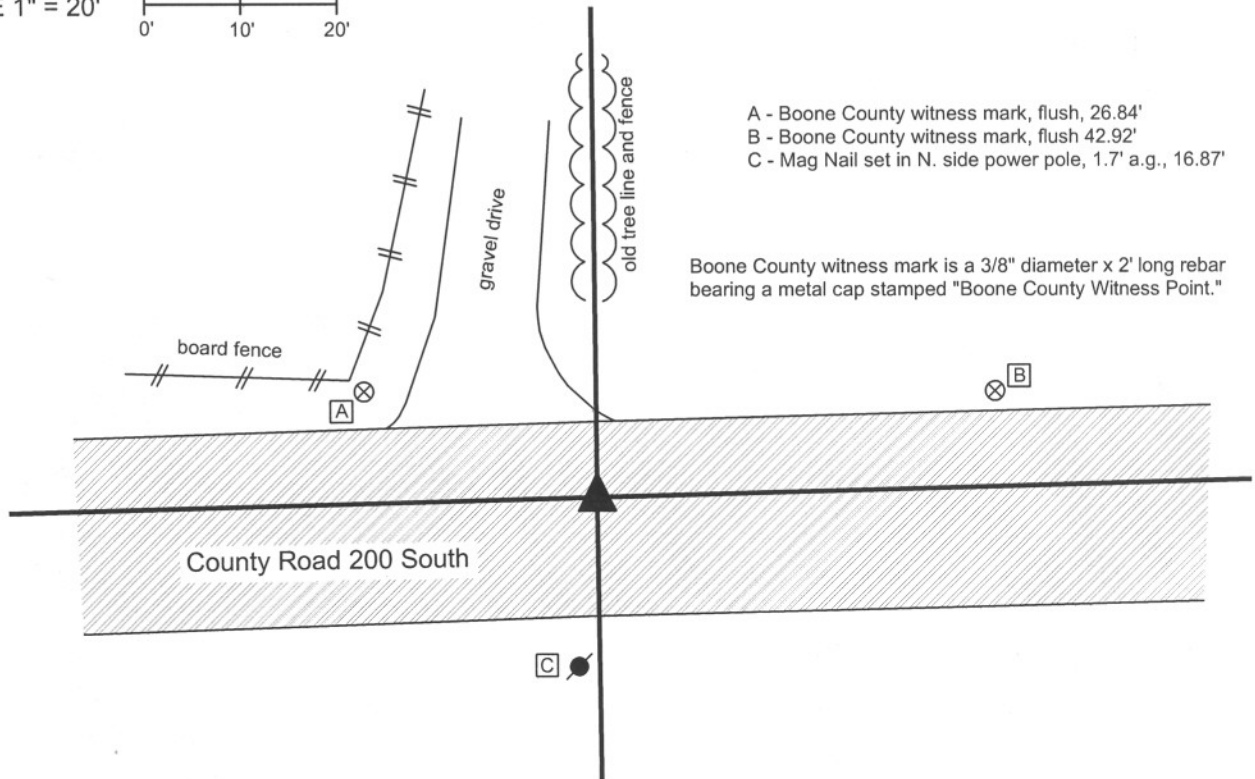
IN02_T18NR2E16_00

IN02_T18NR2E17_08

CORNER WITNESS DETAIL

SCALE 1" = 20'

0' 10' 20'



- A - Boone County witness mark, flush, 26.84'
- B - Boone County witness mark, flush 42.92'
- C - Mag Nail set in N. side power pole, 1.7' a.g., 16.87'

Boone County witness mark is a 3/8" diameter x 2' long rebar bearing a metal cap stamped "Boone County Witness Point."

The harrison monument was set in place of a 1/2 inch rebar found.

A BCS tie card dated June 5, 1991 calls for a 1/2 inch rebar found, 0.3 foot below grade, approximately 2 feet north of the center of County Road 200 South and in line with the fences to the north and south. No other BCS records were found for this corner beyond the original establishment of the corner by federal surveyors. This corner was excavated on April 7, 2008. Prior to excavation, the 1/2 inch rebar was visible in hole in the asphalt, 9 inches below grade, in line with the fence line to the north. The fence to the south is no longer present. The rebar was removed and no other monuments were found during excavation. The area of excavation was 4 feet east-west, centered on the rebar and 5 1/2 feet north-south, extended 2 feet north and 3 1/2 feet south of the rebar, excavated to a depth of 18 inches. The clay layer begins at 12 inches. The harrison was set in the position of the rebar, flush with the adjacent road. This corner was originally established as a wood post in July, 1821.



Kenneth E. Hedge
Kenneth E. Hedge, County Surveyor

James S. Swift
James S. Swift, IN LS 20200054

March 11, 2009

Worth Township Union Township

Section 8 T18N, R2E	Section 9 T18N, R2E
Section 17 T18N, R2E	Section 16 T18N, R2E

SECTION CORNER RECORD

BOONE COUNTY SURVEYOR'S OFFICE

SE 250-700

State Plane grid coordinates NAD83 (NSRS 2007):
 North: 1733225.88 East: 3161970.45 (U.S. survey feet)

Type of monument: Harrison, 4" disk 'Section Corner'
 Depth: 5 inches below adjacent gravel road surface

Indiana tie card references:
 IN02_T18NR2E17_36
 IN02_T18NR2E18_44

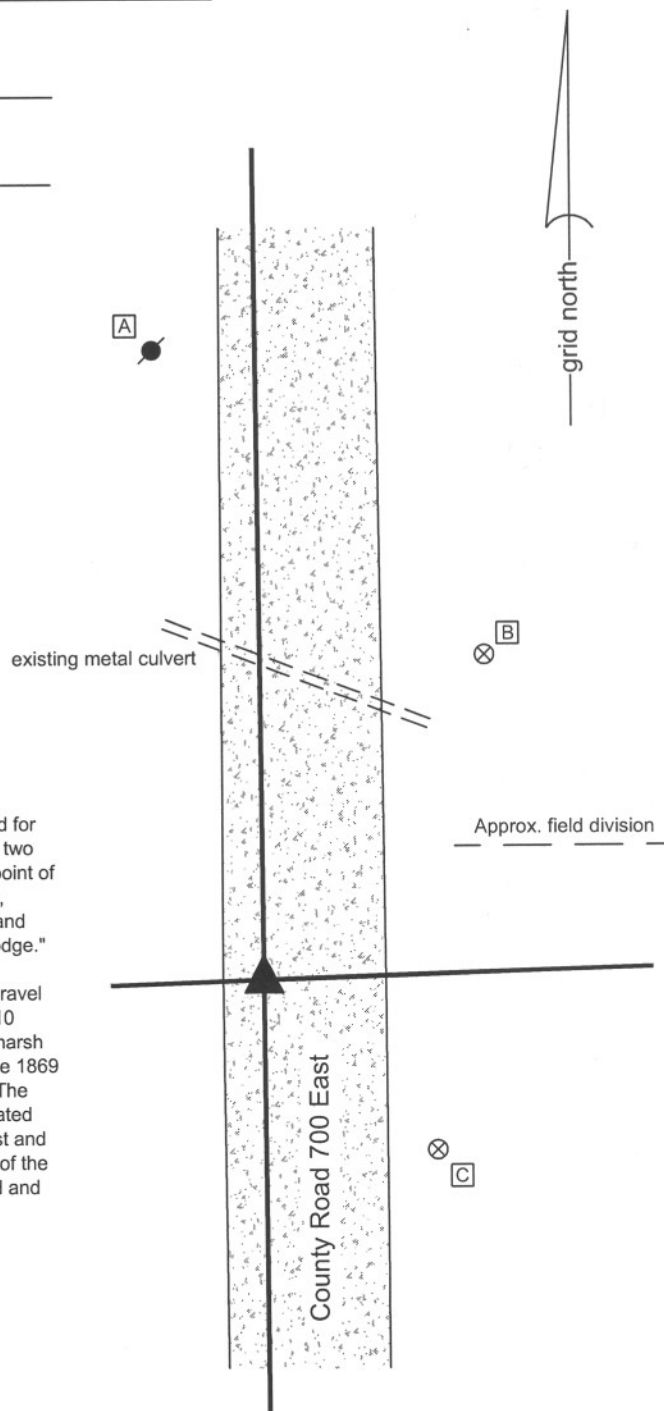
CORNER WITNESS DETAIL

SCALE 1" = 20'

- A - Mag nail set in SE side powerpole, 2' a.g., 65.8'
- B - Boone County witness mark, flush, 40.97'
- C - Boone County witness mark, flush, 25.26'

Boone County witness mark is a 3/8" diameter x 2' long rebar bearing a metal cap stamped "Boone County Witness Point."

The harrison monument was set in place of a 5/8 inch rebar found. This corner is mentioned in a BCS record dated August 17, 1869 which states "Thence North 39.91 to D where drove no stake." No BCS tie cards were found for this corner. Excavation occurred on September 16, 2008. Prior to excavation, two rebars were found, both 5/8 inch, and both in the immediate vicinity of the midpoint of the line between the northeast and southeast corners of section 18. The lower, apparently older rebar was capped with a plastic cap stamped "witness point" and the higher, apparently newer rebar was capped with a plastic cap stamped "Dodge." The newer rebar was 0.15 of a foot southeast of the older rebar. Excavation revealed no further monuments. The road bed consisted of 6 inches modern gravel over 6 inches of older, sandy gravel material. Below this was approximately 10 inches of a thick, peat like material which appears to be residual of a former marsh in this area. This may be the reason for the fact that no stake was driven on the 1869 survey. The two rebars both appear to be intended to be set at the midpoint. The older rebar is approximately 0.1 foot N and 0.1 foot E of the midpoint as calculated from field work in 2008, after the Harrison monuments were set at the northeast and southeast corners of the section. The newer rebar is approximately 0.2 foot E of the calculated midpoint. For purposes of monumentation, the older rebar was held and the harrison was set in the position it occupied prior to excavation. This corner was originally established as a wood post in July, 1821.



Kenneth E. Hedge
 Kenneth E. Hedge, County Surveyor

James S. Swift
 James S. Swift, IN LS 20200054
 March 11, 2009

Worth Township

Section 18 T18N, R2E	▲	Section 17 T18N, R2E
-------------------------	---	-------------------------

SECTION CORNER RECORD

SE 250-800

BOONE COUNTY SURVEYOR'S OFFICE

State Plane grid coordinates NAD83 (NSRS 2007):
 North: 1733393.08 East: 3167236.93 (U.S. survey feet)

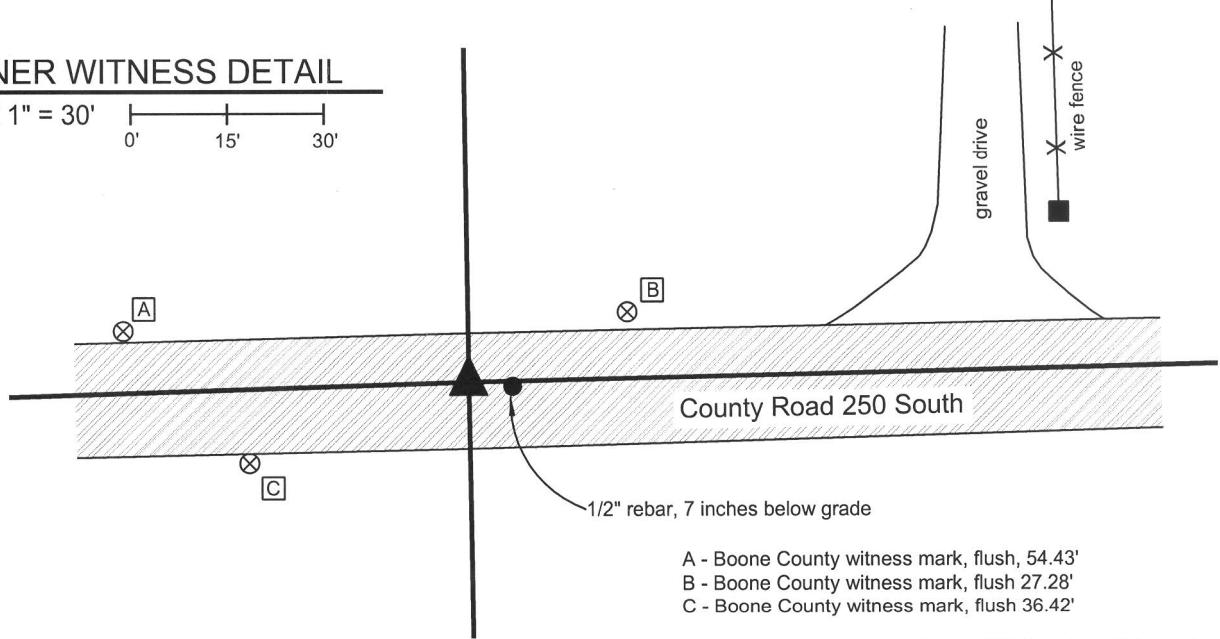
Type of monument: Harrison, 4" disk 'Section Corner'
 Depth: flush with adjacent road surface

Indiana tie card references:
 IN02_T18NR2E16_36
 IN02_T18NR2E17_44



CORNER WITNESS DETAIL

SCALE 1" = 30'
 0' 15' 30'

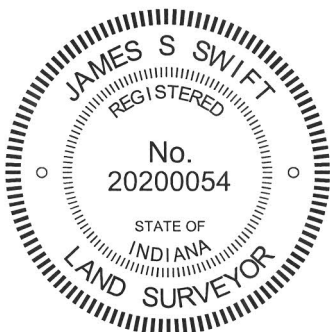


Boone County witness mark is a 3/8" diameter x 2' long rebar bearing a metal cap stamped "Boone County Witness Point."

A BCS record dated April 10 and 11, 1856 states "Re-est. Set rock 11 by 16 in." A BCS tie card dated June 5, 1991 calls for a 1/2 inch rebar found. This corner was established in cooperation with Jonathon Hause, LS20600040 of Anderson & Associates, Lebanon, Indiana. Mr. Hause provided several surveys and associated field notes. The field notes associated with Anderson Job No. 880047, survey dated June 28, 1988, field notes not dated, survey not recorded, demonstrate information in the vicinity of the subject corner as "set pin" 6.5' E. of stone. No information is given as to why the pin was set east of the stone. Another non-recorded survey provided by Mr. Hause which was not an Anderson survey, but certified by James D. Melton, LS 10159, dated September 21, 1977 and revised October 14, 1977 calls for the stone found at the corner and shows local ties to the stone. Mr. Hause computed the location of the stone relative to other monuments called for on the Melton survey and found in the field. This position falls approximately 6.9 feet west of the 1/2" rebar, which is generally in agreement with the information from the 1988 Anderson survey. It is noted that by comparing the sketches of the corner on the Melton survey with the 1991 BCS tie card, it is evident that the rebar was east of the stone. All tie references from the Melton survey have been destroyed.

On January 24 and 28, 2008 this office excavated an area 4 feet N-S by 4 feet E-W centered on the computed position of the stone. The stone was not found. It was observed that the level of the road is close to the surrounding ground level and that the road bed is minimal gravel covered with chip and seal asphalt. Given the conditions of the road, it is likely that this stone was hit and displaced by a road grader.

The position of the stone computed by Mr. Hause was held as the best evidence of the original corner and a harrison monument was set at this position. The rebar was left in place. This corner was originally established as a wood post in July, 1821.



Kenneth E. Hedge
 Kenneth E. Hedge, County Surveyor

James S. Swift
 James S. Swift, IN LS 20200054

March 11, 2009, Revised January 23, 2013

Worth Township Union Township

Section 17 T18N, R2E	Section 16 T18N, R2E
-------------------------	-------------------------

SECTION CORNER RECORD

SE 300-700

BOONE COUNTY SURVEYOR'S OFFICE

State Plane grid coordinates NAD83 (NSRS 2007):

North: 1730580.62 East: 3161992.08 (U.S. survey feet)

Type of monument: Harrison, 4" disk 'Section Corner'

Depth: One inch below adjacent road surface

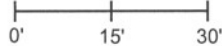
Indiana tie card references:

IN02_T18NR2E17_72 IN02_T18NR2E18_80

IN02_T18NR2E19_08 IN02_T18NR2E20_00

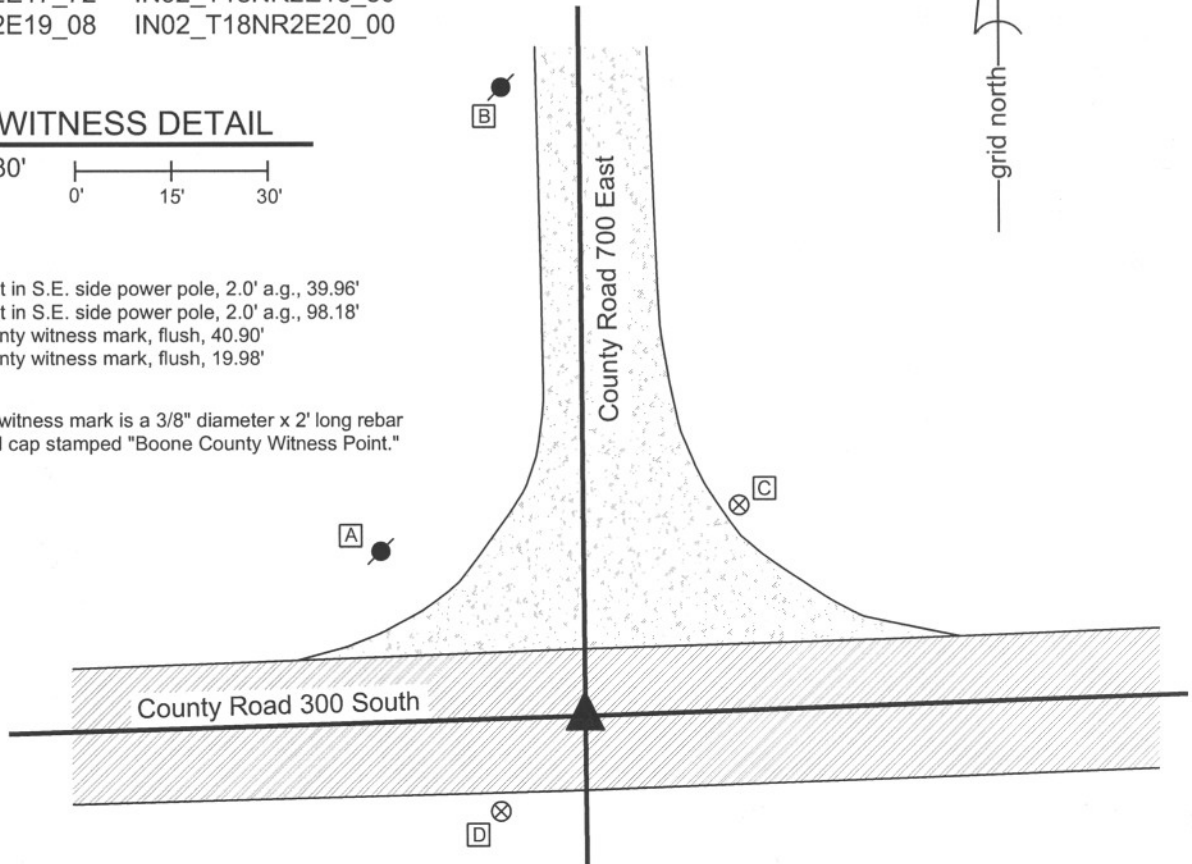
CORNER WITNESS DETAIL

SCALE 1" = 30'



- A - Mag nail set in S.E. side power pole, 2.0' a.g., 39.96'
- B - Mag nail set in S.E. side power pole, 2.0' a.g., 98.18'
- C - Boone County witness mark, flush, 40.90'
- D - Boone County witness mark, flush, 19.98'

Boone County witness mark is a 3/8" diameter x 2' long rebar bearing a metal cap stamped "Boone County Witness Point."



The harrison monument was set in place of a railroad rail found.

A BCS record of August 17, 1869 calls for "a stone that was set." A BCS tie card dated May 3, 1967 states "stone found." This corner was excavated on July 15, 2008. Prior to excavation, a railroad spike was visible 2 inches deep in a hole in the asphalt. Excavation revealed a railroad rail 10 inches deep, 0.15 foot W and 0.05 foot S of the railroad spike. Both were removed. Further excavation yielded a small stone found at 24 inches deep. The stone measured 10 inches E-W by 6 inches N-S by 5 inches thick. The top, center of the stone was 0.3 foot south of the rail. It is not clear whether this stone is the the stone of record, nor is it clear whether this was the stone found in 1967. If is the stone of 1967, it is not known whether it was left undisturbed at the time of the setting of the rail. It is known that the common practice by field crews from this office during that time was to remove the stone entirely and set a rail in its place, when a stone was found. The most likely occurrence was exactly that: the stone was removed and replaced with the rail and that the small stone is not the true corner stone. No other monuments were found. The rail was accepted as providing the best evidence of the original location of the corner stone and the harrison monument was set in the position of the rail.

This corner was originally established as a wood post in July, 1821.



Kenneth E. Hedge
 Kenneth E. Hedge, County Surveyor

James S. Swift
 James S. Swift, IN LS 20200054

March 11, 2009

Worth Township

Section 18 T18N, R2E	Section 17 T18N, R2E
Section 19 T18N, R2E	Section 20 T18N, R2E

SECTION CORNER RECORD

SE 300-750

BOONE COUNTY SURVEYOR'S OFFICE

State Plane grid coordinates NAD83 (NSRS 2007):

North: 1730673.54 East: 3164638.12 (U.S. survey feet)

Type of monument: Harrison, 4" disk 'Section Corner'

Depth: One inch below adjacent road surface

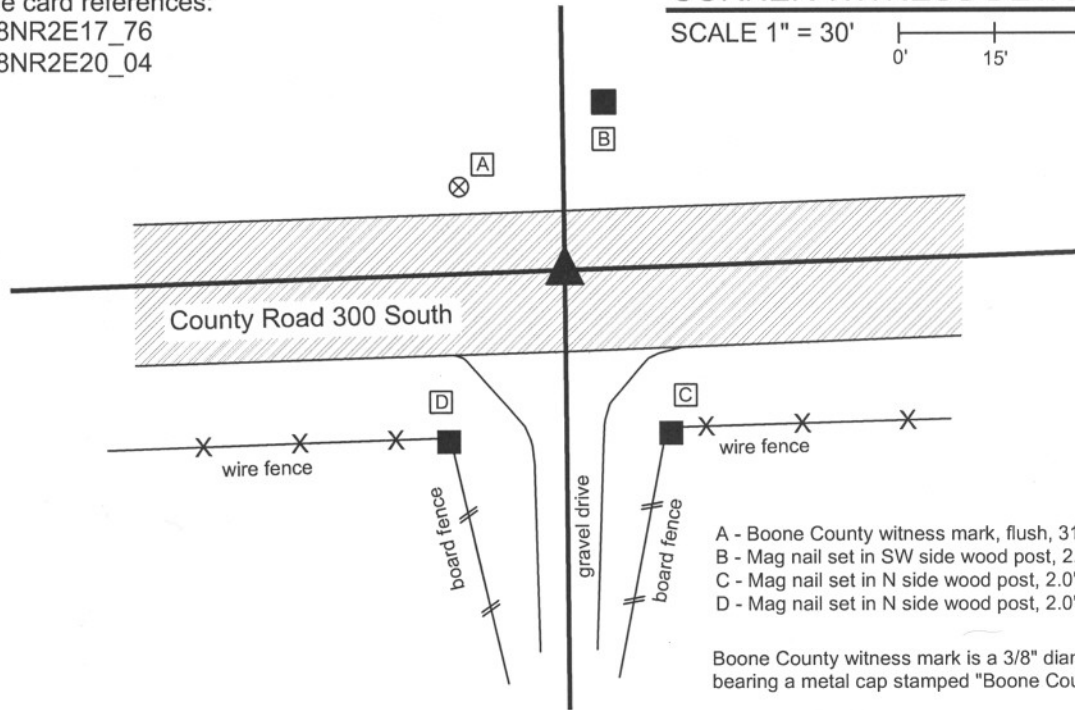
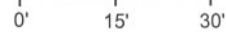
Indiana tie card references:

IN02_T18NR2E17_76

IN02_T18NR2E20_04

CORNER WITNESS DETAIL

SCALE 1" = 30'



- A - Boone County witness mark, flush, 31.18'
- B - Mag nail set in SW side wood post, 2.0' a.g., 25.00'
- C - Mag nail set in N side wood post, 2.0' a.g., 29.38'
- D - Mag nail set in N side wood post, 2.0' a.g., 31.96'

Boone County witness mark is a 3/8" diameter x 2' long rebar bearing a metal cap stamped "Boone County Witness Point."

The harrison monument was set in place of two record stones found.

A BCS record of March 26, 1902 states "Set Rock 10,6,4 + Under rock 10 1/2,10, 5" (Note, the number 5 is shown on the original record for this record. The transcription in the 1912 comprehensive corner stone record shows the number 15.) No BCS tie cards were found for this corner.

This corner was excavated on July 23, 2008. Prior to excavation, a pinched iron pipe was visible in a hole 3 inches deep. The area of excavation extended from the pipe on the east edge, west for 5 feet, as analysis of the relative location of this corner with respect to surrounding corners indicated that the pipe may be further east than the original corner. Excavation revealed a stone found below and immediately west of the iron pipe. (The iron pipe was driven along the east edge of the stone.) This stone measured 13 inches N-S at the base by 4 1/2 inches E-W by 14 inches tall. It was positioned almost entirely in the gravelly material below the asphalt, with only the bottom 2 inches protruding into the base clay layer. This stone does not match the dimensions of the record stone. The record stone was found west (2.8 feet west and 0.7 feet north of the iron pipe, now removed). The record stone measured 6 inches N-S by 4 inches E-W by 10 inches tall. It was also positioned primarily in the gravelly material below the asphalt. The record lower stone ("under rock") was found immediately below the record top stone, measuring 10 inches E-W by 10 inches N-S by 5 inches thick. This stone was completely in the clay layer. A fourth stone was found 4 feet south of the record stone at 16 inches deep, measuring 10 inches E-W by 10 inches N-S by 8 inches thick. It was also mostly in the gravelly material below the asphalt. The only stone of the four embedded in the clay was the record bottom stone. It is not made clear in the 1902 record exactly why the corner was established where it was nor is it clear when each of the 2 non-record stones were set. It is clear, however, that the record stones are present, apparently undisturbed, and fit better relative to surrounding corners both with respect to original federal measurements and the 1902 measurements than the pipe and stone to the east. The stones to the east and south appear to be witness stones. The two record stones were accepted as the best evidence of the original location of the corner and the harrison monument was set in place of them. All four stones were removed.

This corner was originally established as a wood post in July, 1821.



Kenneth E. Hedge

 Kenneth E. Hedge, County Surveyor

James S. Swift

 James S. Swift, IN LS 20200054

March 11, 2009

Worth Township

Section 17
T18N, R2E

▲
 Section 20
T18N, R2E

PHOTOGRAPHIC DOCUMENTATION

Date of photography: July 23, 2008

Top record corner stone (left)
and witness stone to east (right)



Lower record corner stone (left)
and witness stone to east (right)



Three stones - overhead view from northwest



View from west looking east across top
record corner stone and witness stone to
east, along County Road 300 South.



Three stones - overhead view from East



witness stone to south
lower record corner stone
witness stone to east

witness stone to south
witness stone to east
lower record corner stone

For details and documentation, refer to
related sheet "Section Corner Record."

SECTION CORNER RECORD

SE 300-800

BOONE COUNTY SURVEYOR'S OFFICE

State Plane grid coordinates NAD83 (NSRS 2007):

North: 1730761.50 East: 3167275.08 (U.S. survey feet)

Type of monument: Harrison, 4" disk 'Section Corner'

Depth: One inch below adjacent road surface

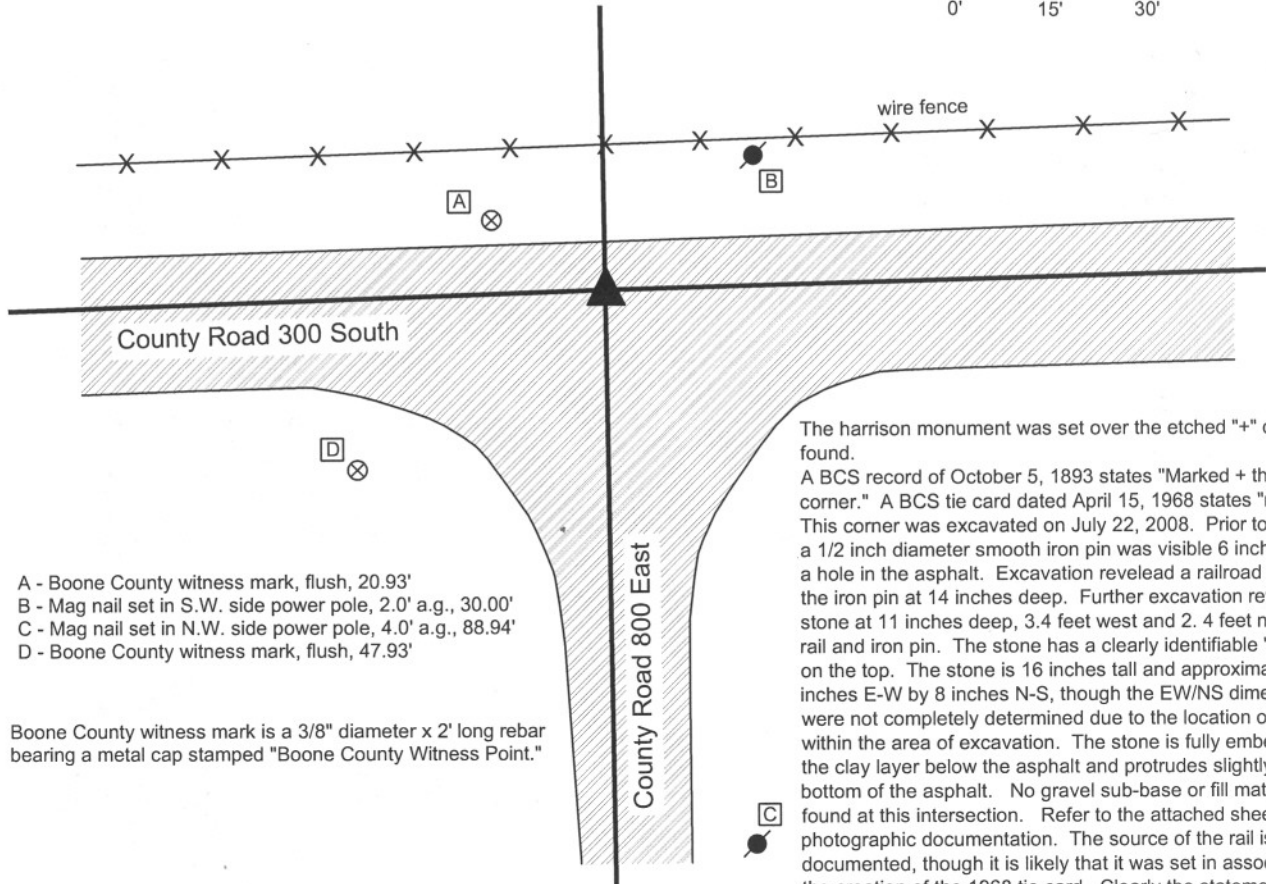
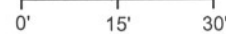
Indiana tie card references:

IN02_T18NR2E16_72 IN02_T18NR2E17_80

IN02_T18NR2E21_00 IN02_T18NR2E20_08

CORNER WITNESS DETAIL

SCALE 1" = 30'



- A - Boone County witness mark, flush, 20.93'
- B - Mag nail set in S.W. side power pole, 2.0' a.g., 30.00'
- C - Mag nail set in N.W. side power pole, 4.0' a.g., 88.94'
- D - Boone County witness mark, flush, 47.93'

Boone County witness mark is a 3/8" diameter x 2' long rebar bearing a metal cap stamped "Boone County Witness Point."

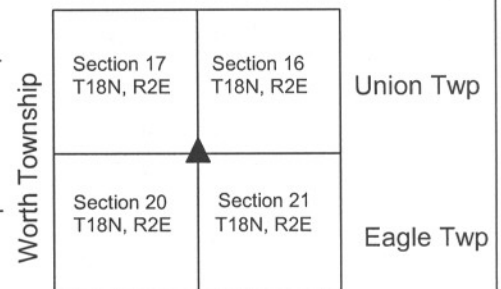
The harrison monument was set over the etched "+" on a stone found. A BCS record of October 5, 1893 states "Marked + the rock at corner." A BCS tie card dated April 15, 1968 states "no stone." This corner was excavated on July 22, 2008. Prior to excavation a 1/2 inch diameter smooth iron pin was visible 6 inches deep in a hole in the asphalt. Excavation revealed a railroad rail below the iron pin at 14 inches deep. Further excavation revealed a stone at 11 inches deep, 3.4 feet west and 2.4 feet north of the rail and iron pin. The stone has a clearly identifiable "+" etched on the top. The stone is 16 inches tall and approximately 8 inches E-W by 8 inches N-S, though the EW/NS dimensions were not completely determined due to the location of the stone within the area of excavation. The stone is fully embedded in the clay layer below the asphalt and protrudes slightly into the bottom of the asphalt. No gravel sub-base or fill material was found at this intersection. Refer to the attached sheet for photographic documentation. The source of the rail is not documented, though it is likely that it was set in association with the creation of the 1968 tie card. Clearly the statement of "no stone" on that tie card is erroneous. The statement of "marked + the rock at corner" on the 1893 tie card indicates that the rock was present prior to this and marked at that time. The marking, vertical orientation, the placement embedded in the clay and the lack of other similar object in the intersection leave minimal uncertainty as to whether this is the old corner stone, hence best available evidence of the original location of the corner. The harrison monument was set over the etched "+" on the stone. This corner was originally established in July, 1821.



Kenneth E. Hedge
 Kenneth E. Hedge, County Surveyor

James S. Swift
 James S. Swift, IN LS 20200054

March 11, 2009



PHOTOGRAPHIC DOCUMENTATION

Date of photography: July 22, 2008

Corner stone - view of south half of stone, exposed in corner of hole, from southeast.



View from East, looking across south half of stone along County Road 300 South.



Corner stone - overhead view from south, showing top of stone after hole was refilled and a new area cut out above stone.



Same view as to left, with chiseled "+" on the top of the stone enhanced for ease of visual detection.

