

# SECTION CORNER RECORD

# SW 200-500

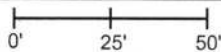
## BOONE COUNTY SURVEYOR'S OFFICE

State Plane grid coordinates NAD83 (2011):  
North: 1734788.82 East: 3098304.45 (U.S. survey feet)

Type of monument: Harrison, 4" disk 'Section Corner'  
Depth: One inch below adjacent road surface

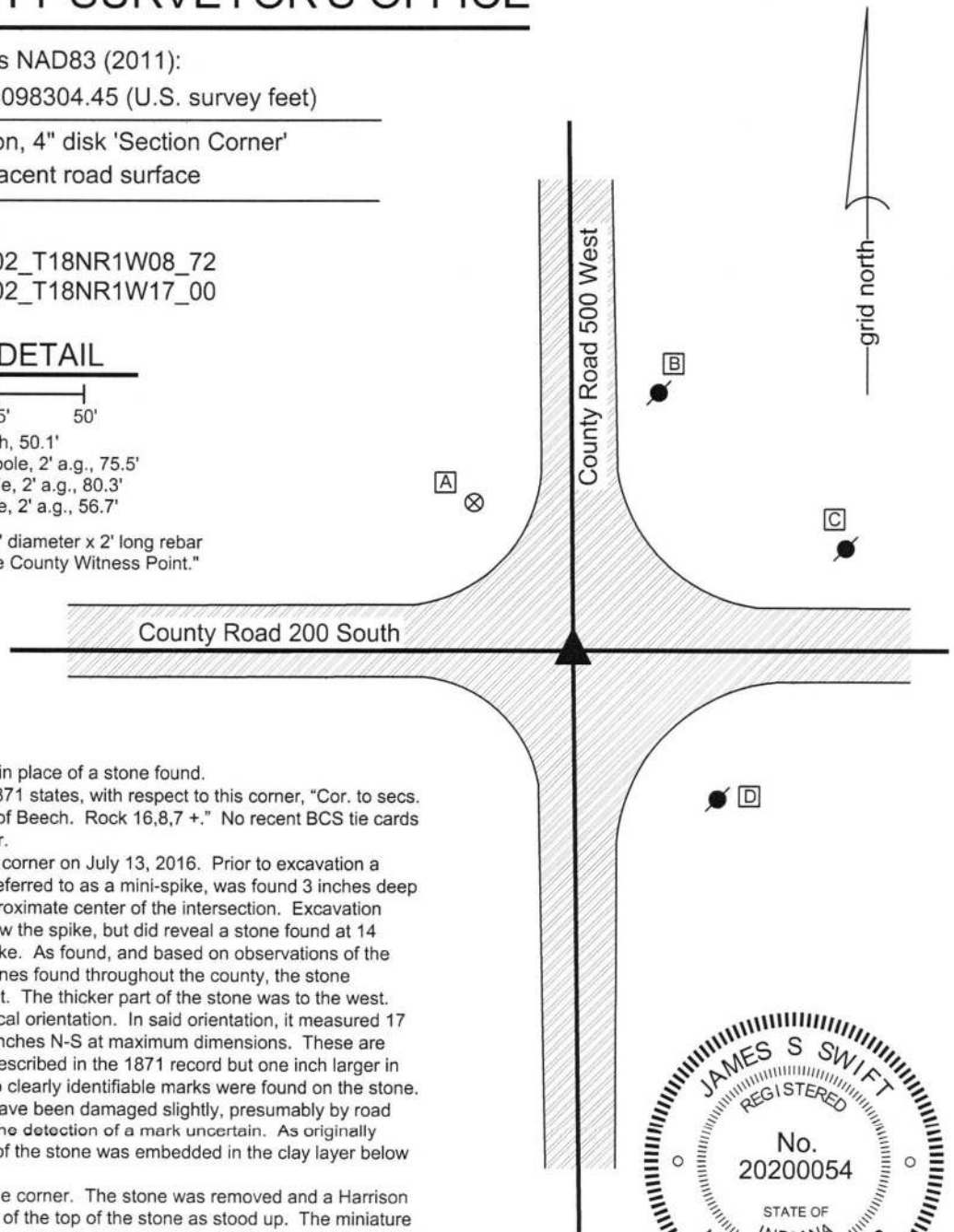
Indiana tie card references:  
IN02\_T18NR1W07\_80 IN02\_T18NR1W08\_72  
IN02\_T18NR1W18\_08 IN02\_T18NR1W17\_00

### CORNER WITNESS DETAIL

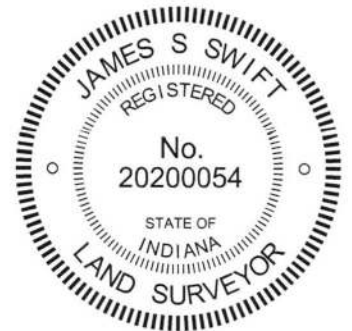
SCALE 1" = 50' 

- A - Boone County witness mark, flush, 50.1'
- B - Mag nail set in S.W. side power pole, 2' a.g., 75.5'
- C - Mag nail set in W. side power pole, 2' a.g., 80.3'
- D - Mag nail set in N. side power pole, 2' a.g., 56.7'

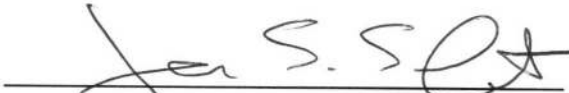
Boone County witness mark is a 3/8" diameter x 2' long rebar bearing a metal cap stamped "Boone County Witness Point."



The Harrison monument was set in place of a stone found.  
 A BCS record dated March 27, 1871 states, with respect to this corner, "Cor. to secs. 7,8,17 and 18. Reest from roots of Beech. Rock 16,8,7 +." No recent BCS tie cards were found referencing the corner.  
 Excavation was performed at this corner on July 13, 2016. Prior to excavation a small railroad spike, sometimes referred to as a mini-spike, was found 3 inches deep in a hole in the asphalt at the approximate center of the intersection. Excavation revealed no further evidence below the spike, but did reveal a stone found at 14 inches deep, southwest of the spike. As found, and based on observations of the characteristics of other corner stones found throughout the county, the stone appeared to be leaning to the east. The thicker part of the stone was to the west. The stone was stood up in a vertical orientation. In said orientation, it measured 17 inches tall by 9 inches E-W by 8 inches N-S at maximum dimensions. These are similar proportions as the stone described in the 1871 record but one inch larger in the E-W and N-S dimensions. No clearly identifiable marks were found on the stone. The top of the rock appeared to have been damaged slightly, presumably by road grading equipment, which made the detection of a mark uncertain. As originally found, approximately 70 percent of the stone was embedded in the clay layer below the road.  
 The stone was held as marking the corner. The stone was removed and a Harrison monument was set in the position of the top of the stone as stood up. The miniature railroad spike, removed during excavation, had been 1.8 feet north and 0.8 foot east of the point held as the corner.  
 This corner was originally established as a wood post in 1820.



  
 Kenneth E. Hedge, County Surveyor

  
 James S. Swift, IN LS 20200054  
 March 23, 2017

Jefferson Township	Section 7 T18N, R1W	Section 8 T18N, R1W
Jackson Township	Section 18 T18N, R1W	Section 17 T18N, R1W

PHOTOGRAPHIC DOCUMENTATION

Date of photography: July 13, 2016

The stone as it was originally exposed.



The stone fully exposed and stood vertical.



View from the south looking across the stone and north along County Road 500 West.



View from the east looking across the stone and west along County Road 200 South.



For details and documentation, refer to related sheet "Section Corner Record."

# SECTION CORNER RECORD

SW 300-450

## BOONE COUNTY SURVEYOR'S OFFICE

State Plane grid coordinates NAD83 (2011):

North: 1729502.13 East: 3101018.36 (U.S. survey feet)

Type of monument: Harrison, 4" disk 'Section Corner'

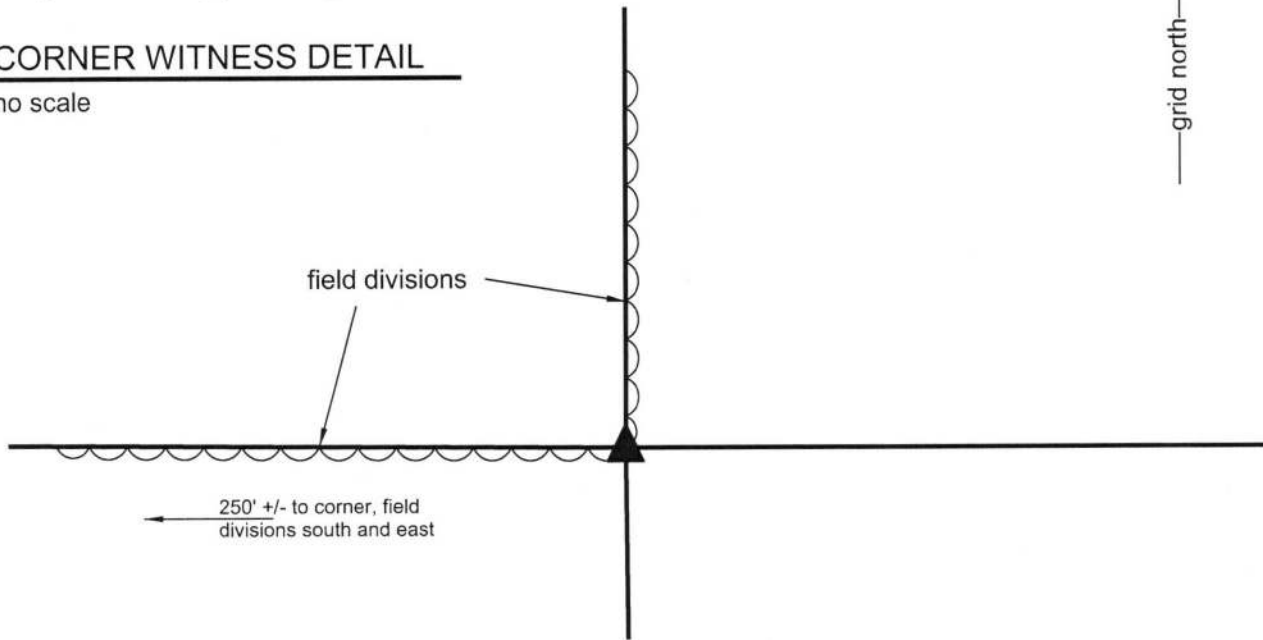
Depth: Flush with adjacent ground

Indiana tie card references:

IN02\_T18NR1W17\_76 IN02\_T18NR1W20\_04

### CORNER WITNESS DETAIL

no scale



The Harrison monument was set in place of a rebar found.

A BCS record dated October 3-4, 1883 states, with respect to this corner, "Reestablished by measurement. Rock 12,10,8 no mark." No recent BCS tie cards were found referencing this corner.

The Harrison monument was set at this corner on October 16, 2017. During reconnaissance at this corner in April, 2016, the situation was significantly different than in October, 2017. In 2016, fencing was found to the west and north of the corner but no specific corner post was observed. The fences to the north and west were substantially overgrown with trees, and substantial debris and growth was found in the immediate vicinity of the corner. No specific monuments were found at that time, though due to the overgrowth, the rebar may have been present yet not observed. A position for the corner was computed with respect to the standing fences to the north and west, with approximately one foot of uncertainty.

On October 16, 2017, it was observed that the fencing and trees had been removed, both at the corner and to the north and west, but field divisions remained to the north and west. A steel t-post within a white PVC pipe was situated at the intersection of the field divisions and the 5/8 inch rebar was found at the base of the post. The rebar was found to be 1.0 foot south and 0.5 foot east of the previously calculated position for the corner. Probing in the vicinity yielded no stone found. It was readily evident that the area had been substantially disturbed since April, 2016. Excavation around the rebar yielded fragments of cedar wood at approximately 18 inches deep which appeared to be remnants of an old post. The cedar was found adjacent to the rebar, slightly northwest. Given the above observations, it is considered most likely that the rebar had been set at the southeast edge of the corner post which once stood at the intersection of the old fences, but was not standing in 2016. The rebar was held as marking the corner and was replaced with a Harrison monument in the same position. The steel t-post and PVC pipe were removed during excavation, but reset adjacent to the monument on the south side.

This corner was originally established as a wood post in 1820.



  
Kenneth E. Hedge, County Surveyor

  
James S. Swift, IN LS 20200054  
October 17, 2017

Center Twp  
(E 1/2 S. 17)

Jackson Twp  
(W 1/2 S. 17 +  
All of S. 20)

Section 17  
T18N, R1W

Section 20  
T18N, R1W