

SECTION CORNER RECORD

SE 200-100

BOONE COUNTY SURVEYOR'S OFFICE

State Plane grid coordinates NAD83 (NSRS 2007):

North: 1735188.75 East: 3129897.92 (U.S. survey feet)

Type of monument: Harrison, 4" disk 'Section Corner'

Depth: One inch below adjacent road surface

Indiana tie card references:

IN02_T18NR1E07_80 IN02_T18NR1E08_72

IN02_T18NR1E17_00 IN02_T18NR1E18_08

CORNER WITNESS DETAIL

SCALE 1" = 40'

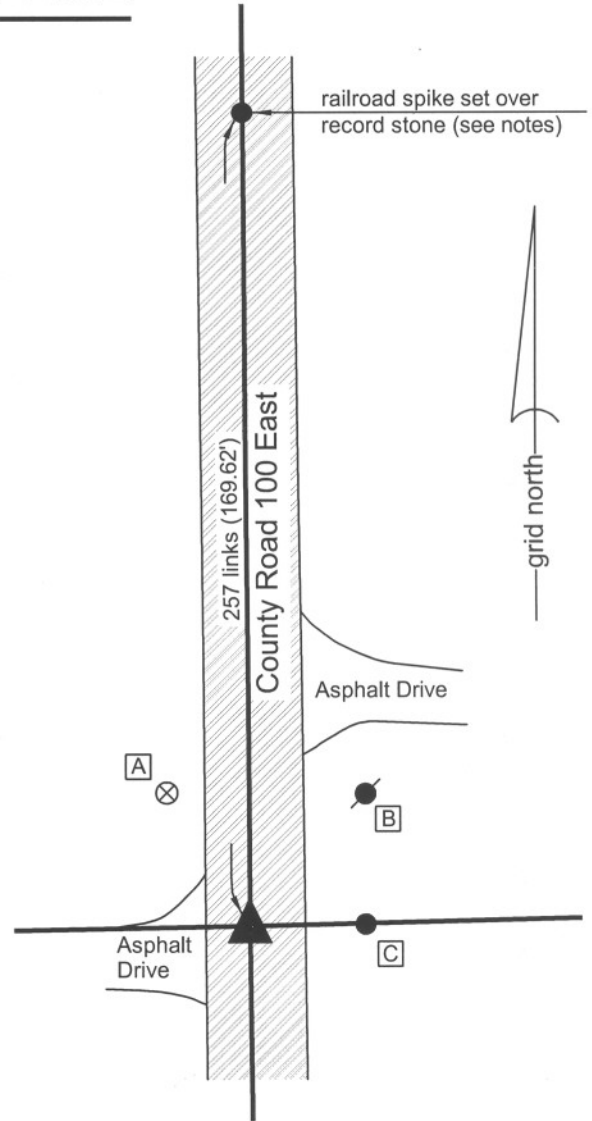


A - Boone County witness mark, flush, 32.64'

B - Mag nail set in S. side power pole, 2.0' a.g., 35.0'

C - 5/8" capped rebar found (Carter), flush, 23.96'

Boone County witness mark is a 3/8" diameter x 2' long rebar bearing a metal cap stamped "Boone County Witness Point."



The harrison monument was set in a position calculated upon the relative positions of two stones to the north.

This corner is not specifically described in the BCS "Surveyor's Record." However, sufficient information exists in the record to reconstruct the position of the corner relative to two stones found. A BCS record of February 12 mentions an intermediate corner (corner 4 of section 8) north of the subject corner. This corner is also referenced as a terminal point for measurements in a BCS record of March 13, 1871. A BCS record of June 13, 20, 21, 1881 describes the stone set at the quarter corner one-half mile to the north (corner H of section 8.) and records measurements from said corner (H) to the aforementioned intermediate corner (4) and to the subject corner (corner G of section 8.) It also records a measurement from the intermediate corner (4) to the subject corner (G). The record stone at corner H was found and a stone was found at corner 4. No stone was found at the subject corner (G). The distance between corners H and 4 match the distance recorded in 1881 of 37.80 chains to within one tenth of a foot. The position of the subject corner was established at the prolongation of the line between the stones at corners H and 4 at the record distance of 2.57 chains (169.62 feet) from corner 4. Excavation at this position revealed no further evidence. The harrison monument was set at the calculated position for the corner. This corner was originally established as a wood post in July, 1821.



Kenneth E. Hedge
Kenneth E. Hedge, County Surveyor

James S. Swift
James S. Swift, IN LS 20200054
July 14, 2010

Center Township

Section 7 T18N, R1E	Section 8 T18N, R1E
Section 18 T18N, R1E	Section 17 T18N, R1E

SECTION CORNER RECORD

BOONE COUNTY SURVEYOR'S OFFICE

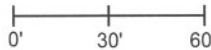
SE 200-150

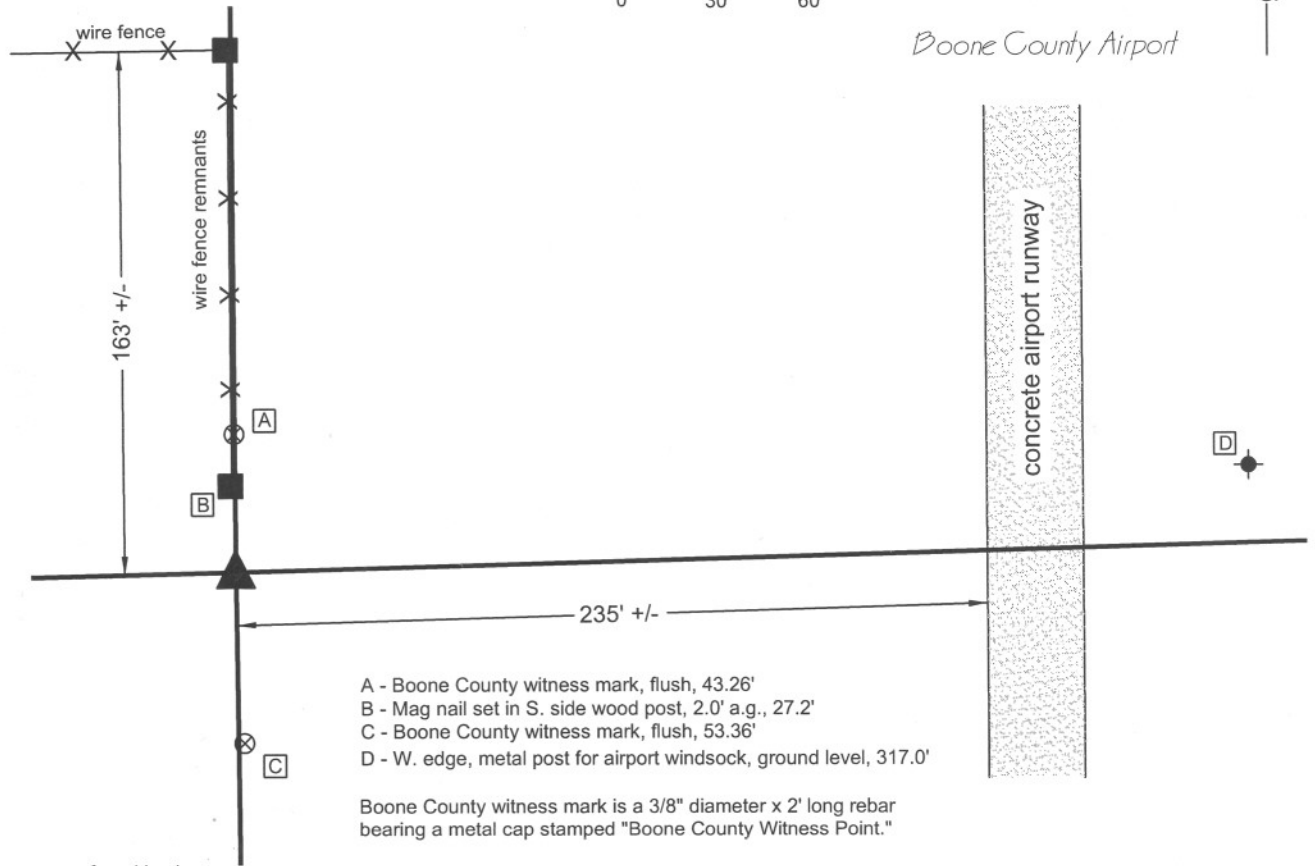
State Plane grid coordinates NAD83 (NSRS 2007):
 North: 1735252.07 East: 3132567.46 (U.S. survey feet)

Type of monument: Stone visible within 12" vertical storm pipe
 Depth: approximately one inch below adjacent ground

Indiana tie card references:
 IN02_T18NR1E08_76
 IN02_T18NR1E17_04

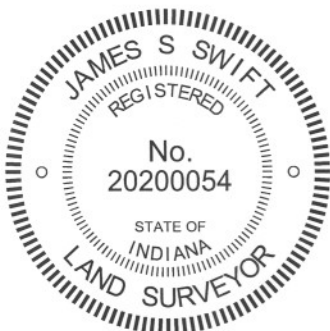
CORNER WITNESS DETAIL

SCALE 1" = 60' 



The stone was found in place.

A BCS record of December 5-6, 1865 states "Reestablished from trees. Set Rock 22,17,5- 1/2 + on side." No recent BCS tie cards were found referencing this corner. This corner was excavated on July 20, 2009. Prior to excavation a 5/8 inch rebar bearing a plastic cap stamped "Henry Aldridge" was found flush with the ground. Excavation revealed the record stone at approximately 2 inches below grade, 2.6 feet south of the rebar. With 12 inches exposed, the stone measures 16 inches N-S by 5 inches E-W. The etched "+" is clearly visible of the East side, towards the north edge of the stone, directly below the high point of the top of the stone. An 18 inch long section of 12 inch diameter HDPE smooth core storm pipe was set around the stone. The high point, above the etched "+" was held as the specific position for the corner. The rebar was left in place. This corner was originally established as a wood post in June, 1820.



Kenneth E. Hedge
 Kenneth E. Hedge, County Surveyor

James S. Swift
 James S. Swift, IN LS 20200054
 July 14, 2010, Revised April 30, 2012

Center Township

Section 8 T18N, R1E
▲
Section 17 T18N, R1E

PHOTOGRAPHIC DOCUMENTATION

Date of photography: July 20, 2009

The stone as found under the wire of the remnant north-south fence.



The top of the stone exposed, showing the etched mark on the east side.



The stone with the vertical section of plastic storm pipe set around it.



View from the north, showing the stone, rebar and a remaining post of the north-south fence.



For details and documentation, refer to related sheet "Section Corner Record."

SECTION CORNER RECORD

BOONE COUNTY SURVEYOR'S OFFICE

SE 250-100

State Plane grid coordinates NAD83 (CORS96):
 North: 1732535.10 East: 3129914.20 (U.S. survey feet)

Type of monument: Harrison, 4" disk 'Section Corner'
 Depth: One inch below adjacent road surface

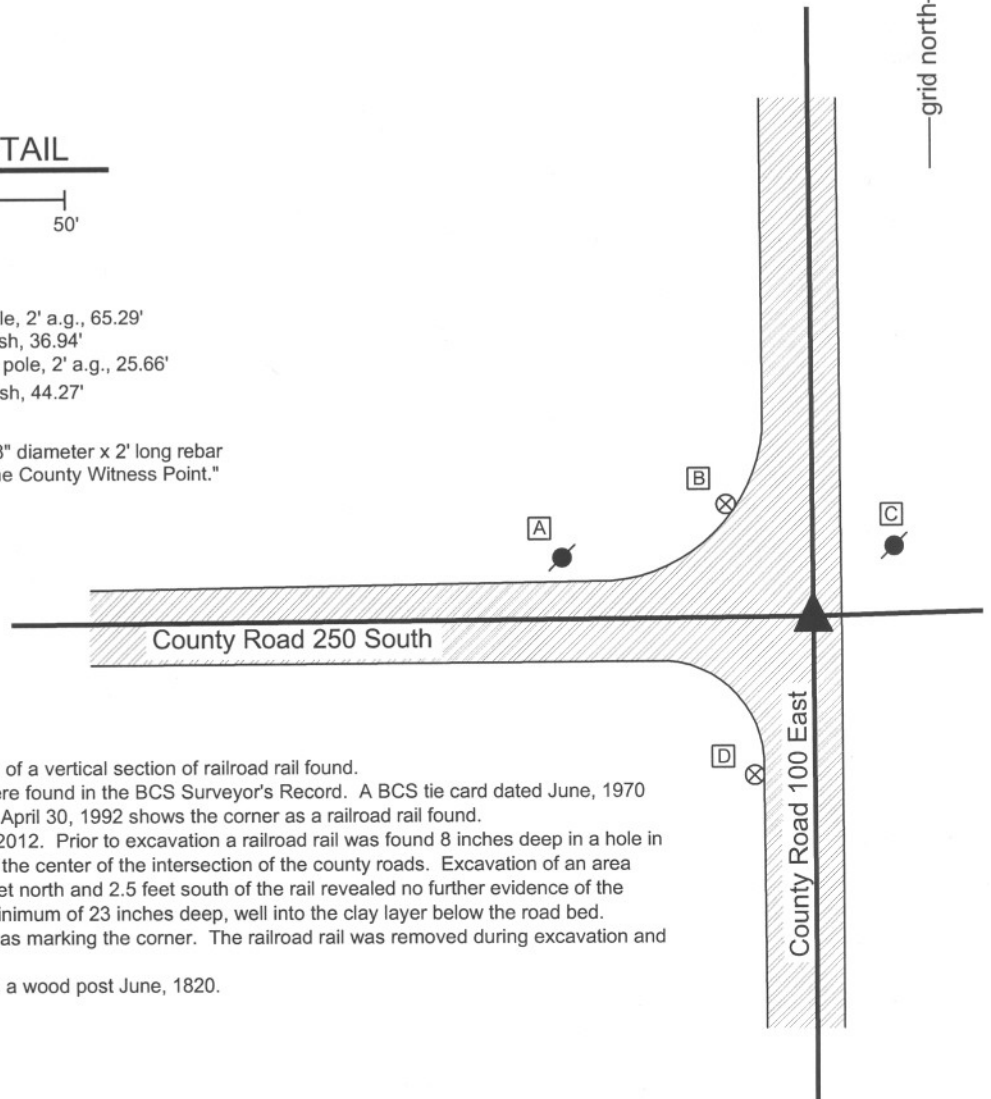
Indiana tie card references:
 IN02_T18NR1E17_36
 IN02_T18NR1E18_44

CORNER WITNESS DETAIL

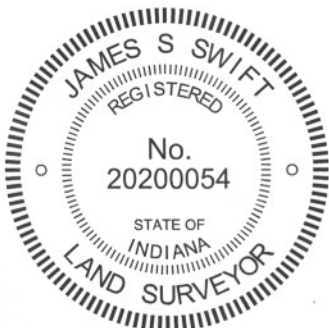
SCALE 1" = 50'


- A - Mag nail set in E. side power pole, 2' a.g., 65.29'
- B - Boone County witness mark, flush, 36.94'
- C - Mag nail set in S.W. side power pole, 2' a.g., 25.66'
- D - Boone County witness mark, flush, 44.27'

Boone County witness mark is a 3/8" diameter x 2' long rebar bearing a metal cap stamped "Boone County Witness Point."



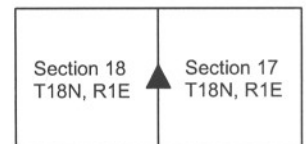
The Harrison monument was set in place of a vertical section of railroad rail found. No specific descriptions of this corner were found in the BCS Surveyor's Record. A BCS tie card dated June, 1970 states "no stone." A BCS tie card dated April 30, 1992 shows the corner as a railroad rail found. This corner was excavated on June 27, 2012. Prior to excavation a railroad rail was found 8 inches deep in a hole in the asphalt, approximately 3 feet east of the center of the intersection of the county roads. Excavation of an area extending 1 foot east, 4 feet west, 2.5 feet north and 2.5 feet south of the rail revealed no further evidence of the corner. Excavation as performed to a minimum of 23 inches deep, well into the clay layer below the road bed. The position of the railroad rail was held as marking the corner. The railroad rail was removed during excavation and replaced with a Harrison monument. This corner was originally established as a wood post June, 1820.



Kenneth E. Hedge
 Kenneth E. Hedge, County Surveyor

James S. Swift
 James S. Swift, IN LS 20200054
 January 15, 2013

Center Township



SECTION CORNER RECORD

SE 250-200

BOONE COUNTY SURVEYOR'S OFFICE

State Plane grid coordinates NAD83 (NSRS 2007):

North: 1732660.78 East: 3135250.57 (U.S. survey feet)

Type of monument: Harrison, 4" disk 'Section Corner'

Depth: One inch below adjacent road surface

Indiana tie card references:

IN02_T18NR1E16_36

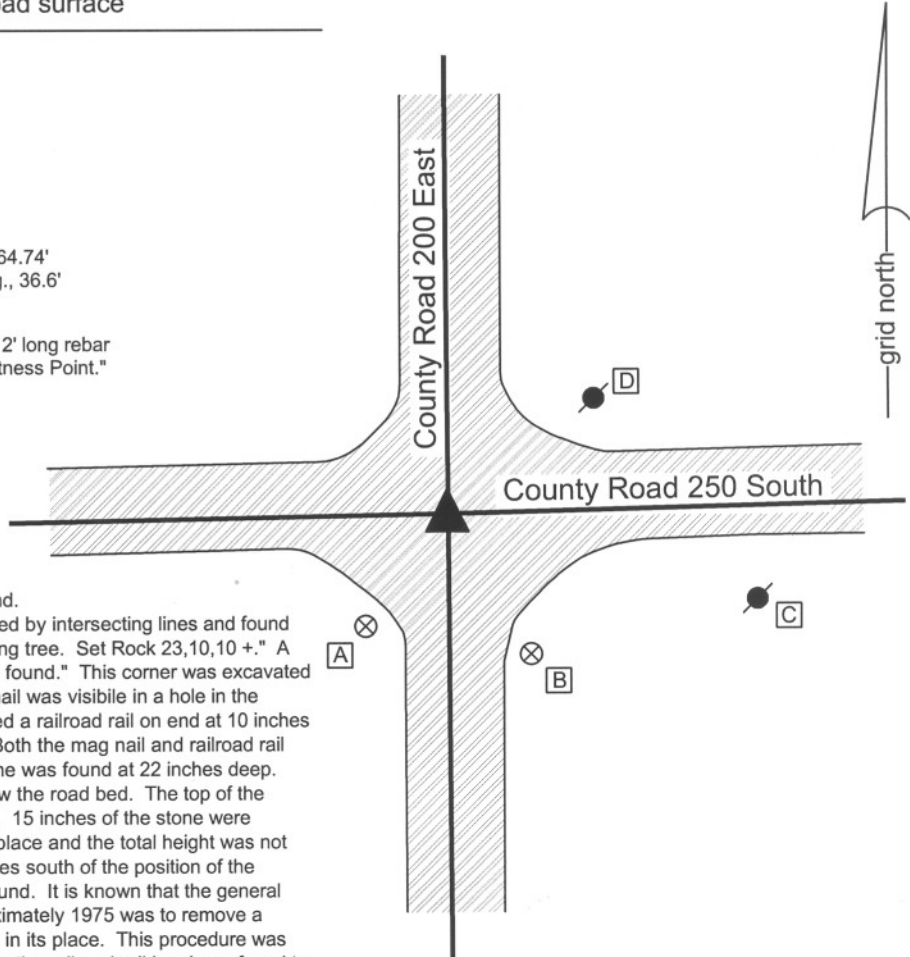
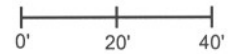
IN02_T18NR1E17_44

- A - Boone County witness mark, flush, 29.01'
- B - Boone County witness mark, flush, 33.85'
- C - Mag nail set in N. side power pole, 2.0' a.g., 64.74'
- D - Mag nail set in S.W. side power pole, 2.9' a.g., 36.6'

Boone County witness mark is a 3/8" diameter x 2' long rebar bearing a metal cap stamped "Boone County Witness Point."

CORNER WITNESS DETAIL

SCALE 1" = 40'



The harrison monument was set over a stone found.

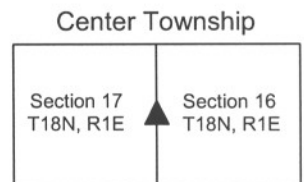
A BCS record of April 5, 1877 states "Reestablished by intersecting lines and found an old rod oak stump to correspond with the bearing tree. Set Rock 23,10,10 +." A BCS tie card dated September 1975 states "stone found." This corner was excavated on October 28, 2009. Prior to excavation a mag nail was visible in a hole in the asphalt 2 inches below grade. Excavation revealed a railroad rail on end at 10 inches deep directly below the position of the mag nail. Both the mag nail and railroad rail were removed during excavation. The record stone was found at 22 inches deep. The stone is fully embedded in the clay layer below the road bed. The top of the stone measures 10 inches E-W by 10 inches N-S. 15 inches of the stone were exposed on the north side. The stone was left in place and the total height was not measured. The top, center of the stone is 10 inches south of the position of the railroad rail. The 1975 tie card calls for a stone found. It is known that the general procedure of BCS field crews from 1967 to approximately 1975 was to remove a stone when found and install a railroad rail on end in its place. This procedure was not universally followed though, and in some cases the railroad rail has been found to have been set along an edge of the stone. The stone found matches the description of the record stone and appears to be undisturbed, embedded in the clay. The observed evidence indicated that this stone had not been disturbed in 1975, hence it did not appear that it was moved and the rail set in its place. It is concluded that either the rail was set along the north side of the stone or a different stone was found, accepted as the corner and the rail replaced that. Given the presence of the record stone and the uncertainty of the 1975 record, including the lack of any mention of a railroad rail, the record stone was held as the corner. The harrison monument was set over the approximate top, center of the stone. It is also noted that no specific marking were found on the stone. This particular stone is of a soft soapstone type material and the mark may have been worn off at some undetermined time in the past.

This corner was originally established as a wood post in June, 1820.

Kenneth E. Hedge
 Kenneth E. Hedge, County Surveyor

James S. Swift
 James S. Swift, IN LS 20200054

July 14, 2010



SECTION CORNER RECORD

BOONE COUNTY SURVEYOR'S OFFICE

SE 300-100

State Plane grid coordinates NAD83 (CORS96):

North: 1729869.74 East: 3129924.20 (U.S. survey feet)

Type of monument: Harrison, 4" disk 'Section Corner'

Depth: six inches below adjacent gravel road surface

Indiana tie card references:

IN02_T18NR1E18_80

IN02_T18NR1E17_72

IN02_T18NR1E19_08

IN02_T18NR1E20_00

CORNER WITNESS DETAIL

SCALE 1" = 30'



A - Boone County witness mark, flush, 12.43'

B - Boone County witness mark, flush, 25.76'

C - Mag nail set in N. side power pole, 2' a.g., 64.05'

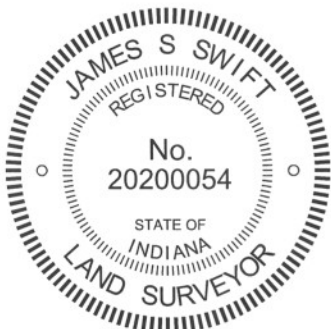
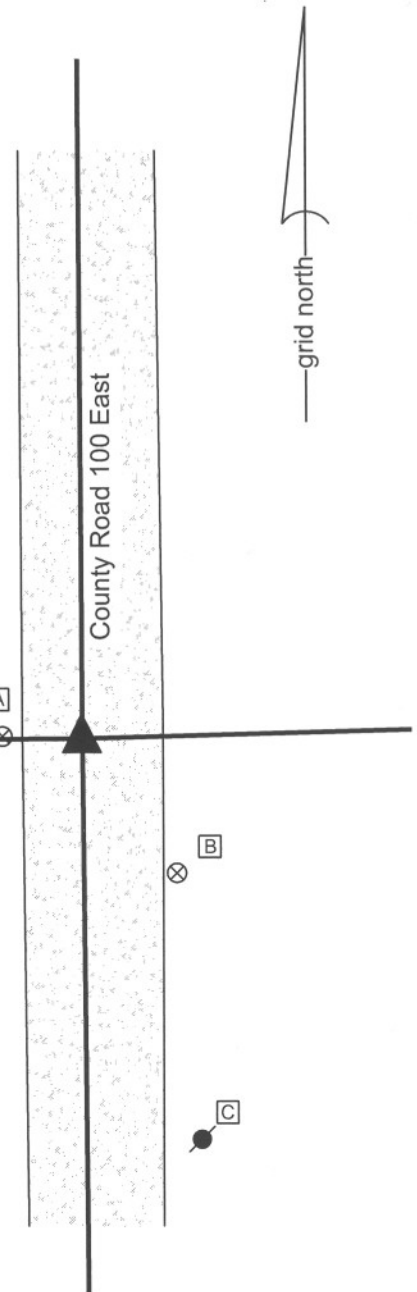
Boone County witness mark is a 3/8" diameter x 2' long rebar bearing a metal cap stamped "Boone County Witness Point."

The harrison monument was set in place of a railroad rail found.

No specific descriptions of this corner were found in the BCS Surveyor's Record. A BCS tie card dated May 1968 shows the corner and states "stone with + lying in sideditch."

This corner was excavated on February 28, 2011. Two vertical sections of railroad rail were found at 3 inches deep. One rail was 0.7 foot north and 0.7 foot west of the other rail. The one remaining distance tie reference from the 1968 tie card is a wood post on the west side of the road. The tie card shows the corner being 18 feet east of this post and 19 feet west of the post on the east side of the road. Neither rail fits with the tie to the post on the west, though the northwest of the two rails was at approximately 19 feet. The other rail was closer to 20 feet from the post. Excavation of an area 8 feet N-S by 7 feet E-W, approximately centered on the rails, yielded no further evidence. As the northwesterly of the two rails fit with one dimension shown on the tie card, albeit reversed from the orientation shown on the tie card, and was also more in line with the post, this rail was held as the corner. Both rails were removed during excavation and a harrison monument was set in the position of the northwesterly rail.

This corner was originally established as a wood post in June 1820.



Kenneth E. Hedge
 Kenneth E. Hedge, County Surveyor

James S. Swift
 James S. Swift, IN LS 20200054
 March 1, 2012

Center Twp	Section 18 T18N, R1E	Section 17 T18N, R1E
Harrison Twp	Section 19 T18N, R1E	Section 20 T18N, R1E

SECTION CORNER RECORD

SE 300-150

BOONE COUNTY SURVEYOR'S OFFICE

State Plane grid coordinates NAD83 (CORS96):

North: 1729930.27 East: 3132596.33 (U.S. survey feet)

Type of monument: Harrison, 4" disk 'Section Corner'

Depth: Two inches above adjacent ground.

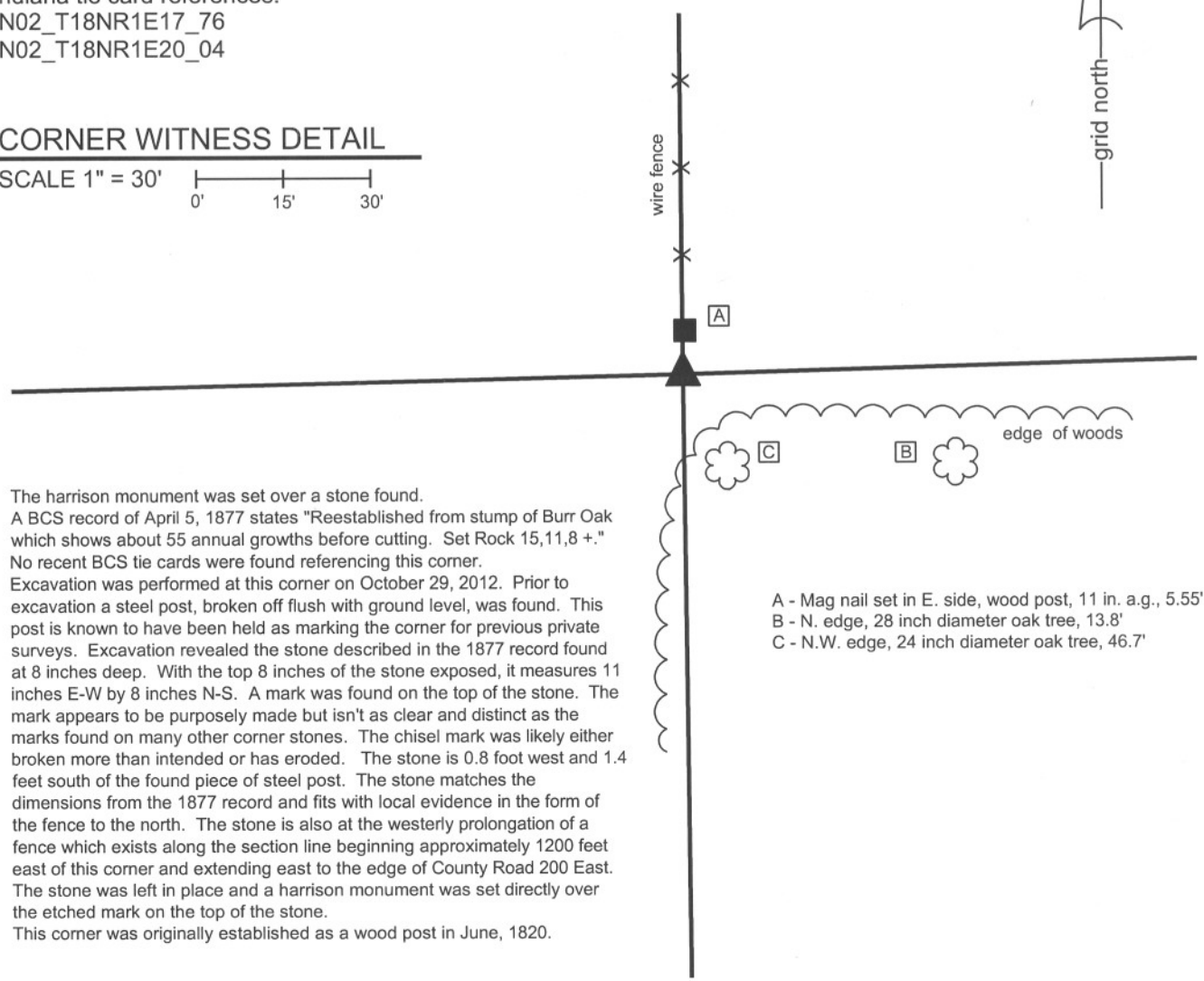
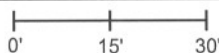
Indiana tie card references:

IN02_T18NR1E17_76

IN02_T18NR1E20_04

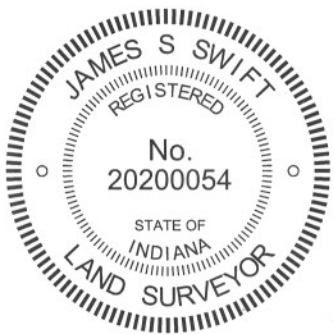
CORNER WITNESS DETAIL

SCALE 1" = 30'



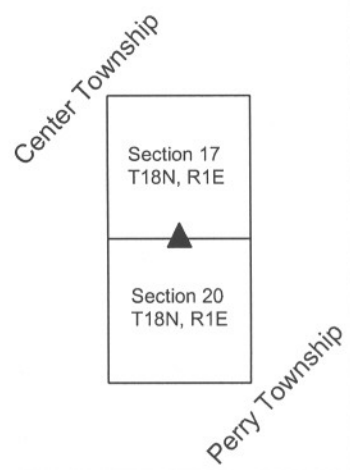
The harrison monument was set over a stone found.
A BCS record of April 5, 1877 states "Reestablished from stump of Burr Oak which shows about 55 annual growths before cutting. Set Rock 15,11,8 +."
No recent BCS tie cards were found referencing this corner.
Excavation was performed at this corner on October 29, 2012. Prior to excavation a steel post, broken off flush with ground level, was found. This post is known to have been held as marking the corner for previous private surveys. Excavation revealed the stone described in the 1877 record found at 8 inches deep. With the top 8 inches of the stone exposed, it measures 11 inches E-W by 8 inches N-S. A mark was found on the top of the stone. The mark appears to be purposely made but isn't as clear and distinct as the marks found on many other corner stones. The chisel mark was likely either broken more than intended or has eroded. The stone is 0.8 foot west and 1.4 feet south of the found piece of steel post. The stone matches the dimensions from the 1877 record and fits with local evidence in the form of the fence to the north. The stone is also at the westerly prolongation of a fence which exists along the section line beginning approximately 1200 feet east of this corner and extending east to the edge of County Road 200 East. The stone was left in place and a harrison monument was set directly over the etched mark on the top of the stone.
This corner was originally established as a wood post in June, 1820.

- A - Mag nail set in E. side, wood post, 11 in. a.g., 5.55'
- B - N. edge, 28 inch diameter oak tree, 13.8'
- C - N.W. edge, 24 inch diameter oak tree, 46.7'



Kenneth E. Hedge
Kenneth E. Hedge, County Surveyor

James S. Swift
James S. Swift, IN LS 20200054
January 15, 2013



PHOTOGRAPHIC DOCUMENTATION

Date of photography: October 29, 2012

The vicinity of the corner prior to excavation.
View from the northwest.



The stone and the wood end post. View from
the south, looking north along the N-S fence.



The stone exposed.



The stone within the section of HDPE storm pipe,
immediately prior to being encased in concrete.



For details and documentation, refer to
related sheet "Section Corner Record."

SECTION CORNER RECORD

SE 300-200


BOONE COUNTY SURVEYOR'S OFFICE

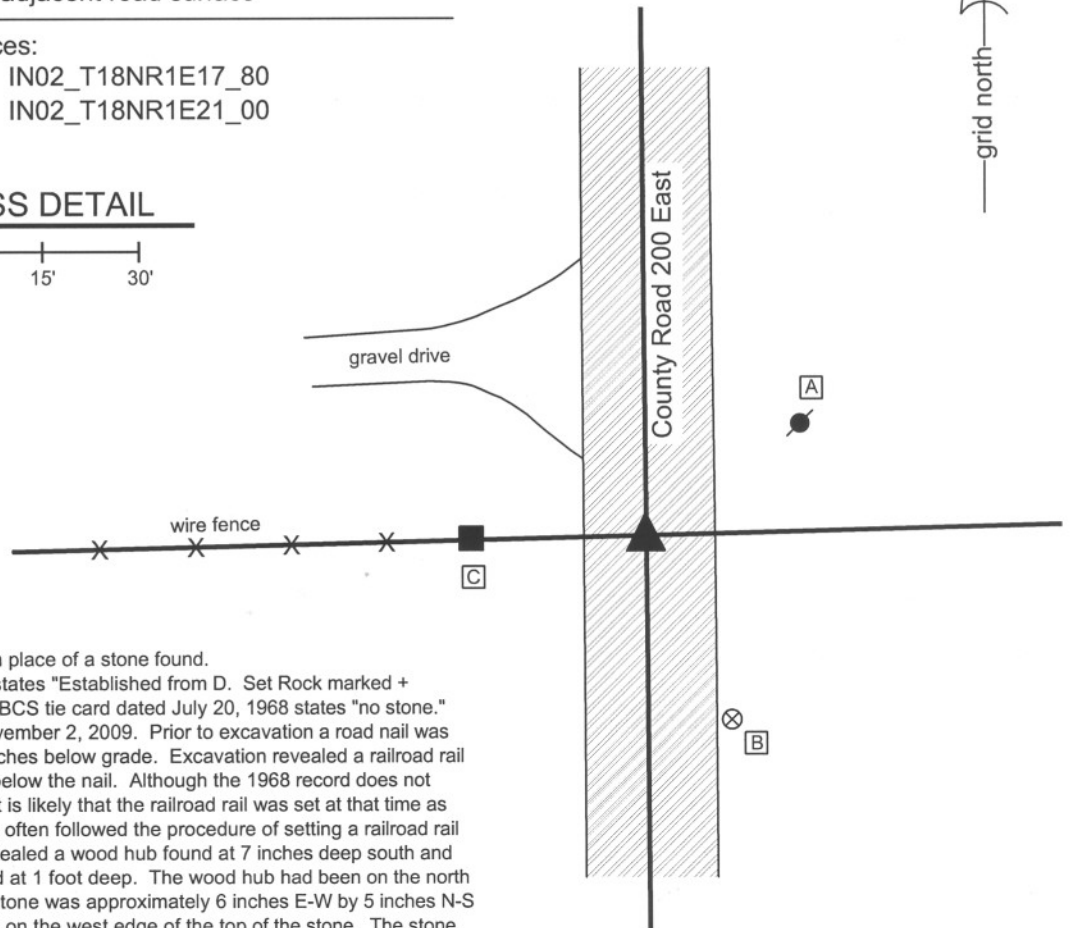
State Plane grid coordinates NAD83 (NSRS 2007):
 North: 1730003.10 East: 3135269.676 (U.S. survey feet)

Type of monument: Harrison, 4" disk 'Section Corner'
 Depth: One inch below adjacent road surface

Indiana tie card references:
 IN02_T18NR1E16_72 IN02_T18NR1E17_80
 IN02_T18NR1E20_08 IN02_T18NR1E21_00

CORNER WITNESS DETAIL

SCALE 1" = 30'




The harrison monument was set in place of a stone found. A BCS record of May 8 - 9, 1901 states "Established from D. Set Rock marked + 12.10.8 1/2 brick underneath." A BCS tie card dated July 20, 1968 states "no stone." This corner was excavated on November 2, 2009. Prior to excavation a road nail was visible in a hole in the asphalt 2 inches below grade. Excavation revealed a railroad rail on end at 9 inches deep, directly below the nail. Although the 1968 record does not specify what monument was set, it is likely that the railroad rail was set at that time as BCS field crews of that time-frame often followed the procedure of setting a railroad rail at the corner. Excavation also revealed a wood hub found at 7 inches deep south and east of the rail. A stone was found at 1 foot deep. The wood hub had been on the north side of the stone. The top of the stone was approximately 6 inches E-W by 5 inches N-S and an etched "+" is clearly visible on the west edge of the top of the stone. The stone was removed and measured. The maximum dimensions of the stone are 10 inches tall by 8 inches E-W by 6 inches N-S. This is uniformly 2 inches smaller than the dimensions reported in the record. The record also calls for 1/2 brick underneath, which was found directly below the stone. The 1/2 brick was somewhat deteriorated was visible in the form of various small pieces. The stone was accepted as being the same monument set in 1901, but it is not clear why the 1901 record describes the stone as 2 inches larger in all dimensions than it actually is. The harrison monument was set in place of the stone at the same horizontal position as the top, high point of the stone, in line with the etched + on the west side. The nail and railroad rail, both removed during excavation, were 0.4 foot north and 0.6 foot west of the top, high point of the stone. This corner was originally established as a wood post in June, 1820.

- A - Mag nail set in S. side power pole, 2.0' a.g., 28.7'
- B - Boone County witness mark, flush, 31.68'
- C - Mag nail set in E. side wood post, 0.5' a.g., 25.6'

Boone County witness mark is a 3/8" diameter x 2' long rebar bearing a metal cap stamped "Boone County Witness Point."



Kenneth E. Hedge
 Kenneth E. Hedge, County Surveyor

Center Twp

James S. Swift
 James S. Swift, IN LS 20200054
 July 14, 2010

Perry Twp

Section 17 T18N, R1E	Section 16 T18N, R1E
Section 20 T18N, R1E	Section 21 T18N, R1E

PHOTOGRAPHIC DOCUMENTATION
Date of photography: November 2, 2009

View of the stone as first exposed.
View from above and west.



Close-up on the stone, showing the etched mark on the west side of the top of the stone.



View of the stone from above and north.



For details and documentation, refer to related sheet "Section Corner Record."

View from the south, looking across the stone and north along County Road 200 East.

