

SECTION CORNER RECORD

NW 900-300

BOONE COUNTY SURVEYOR'S OFFICE

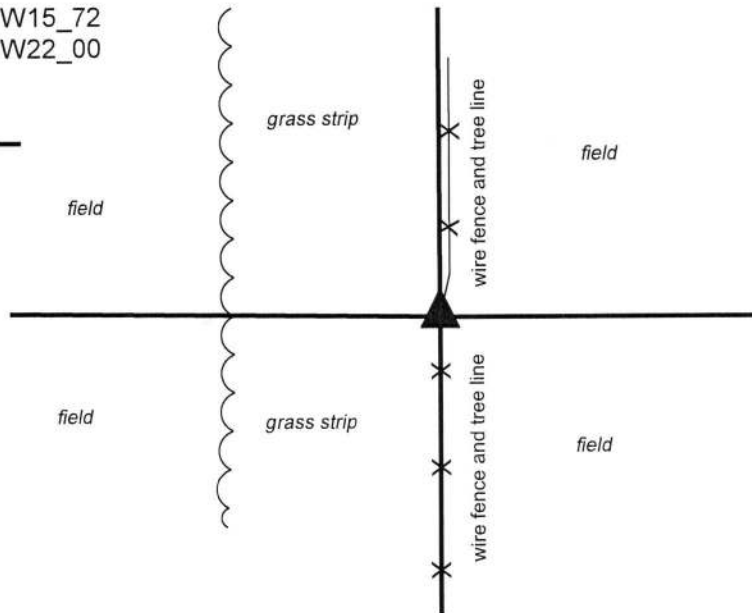
State Plane grid coordinates NAD83 (2011) (U.S. survey feet):
 Corner (Center of Post): North: 1793178.08 East: 3108957.16
 Witness (Mag with shiner): North: 1793178.08 East: 3108956.91

Indiana tie card references:

IN02_T20NR1W16_80 IN02_T20NR1W15_72
 IN02_T20NR1W21_08 IN02_T20NR1W22_00

CORNER WITNESS DETAIL

SCALE 1" = 40'



The wood post is marked with a mag nail with washer stamped 'Boone County Surveyor.' The post is within a heavily wooded north-south tree line / fence line. No specific distance ties are provided.

The wood corner post was found in place.

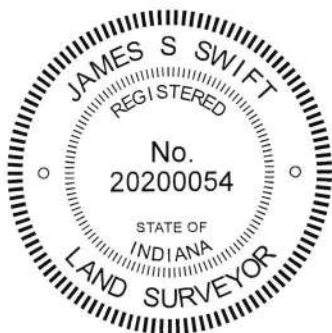
A BCS record of March 13-14, 1863 states, with respect to this corner, "Reest'd from trees. One standing. Other cut down. Set Rock 16x10x6 marked +." No recent BCS tie cards were found referencing this corner. The corner is shown as 'calculated position' on a survey by Jonathon E. Hause, LS 20600040, in Survey Book 14, page 11 in the Office of the Boone County Recorder.

This corner was excavated on November 14, 2018. Prior to excavation, a wood corner post was found with a wood brace on the south side at the terminus of fences to the north and south. Another post was found to the south, but appeared to be a brace post for the primary corner post. The fence to the north shifts to the east, slightly north of the post. This section of fence appears to be newer than the fence to the south. Excavation around the post revealed mostly roots of trees found. The north-south fence represents a heavily wooded fence line and the tree roots are thickly intertwined in the immediate vicinity of the post. Some fencing was found in the ground bearing west from the post, confirming the post as the corner of fences in three cardinal directions. Probing and manual excavation below one foot deep is impractical. Mechanized excavation would damage the valuable trees to the north and south of the corner and was not undertaken. It is possible that the corner stone remains undetected in the vicinity of the post.

It is observed that the record of March 13-14, 1863 contains information about the south quarter corner and southwest corner of section 16 as well as the subject corner, being the southeast corner of section 16. The record calls for stones at the other two corners, both of which have been found (see BCS corners NW 900-350 and NW 900-400). The record clearly indicates that the south quarter corner of section 16 was established equidistant from the southeast and southwest corners of the section and appears to indicate that all three corners fall along a straight line. The corner post found and discussed above falls very close to an equidistant prolongation of the line connecting the stones found at those corners, with the center of the post being approximately 1.2 feet south and 1.2 feet east of the theoretical point. This is held as confirmation that the position of the found post conforms closely with the position of the corner shown on the 1863 record. An approximate position for the calculated corner shown on the aforementioned Hause survey was estimated to be 8.5 feet east and 14.6 feet north of the post, as computed with respect to the respective positions of other corners and evidence shown on the survey. No monument or evidence of occupation was found in the vicinity of this computed position and no explanation is offered on the survey for how this position was computed.

The found corner post was held as marking the corner. A mag nail with washer stamped 'Boone County Surveyor' was driven into the west side of the post, 0.5 foot above ground. The specific location of the corner is held to be the center of the post, 0.25 foot east of the nail. The post is 6 inches by 6 inches.

This corner was originally established as a wood post in 1829.



Kenneth E. Hedge
 Kenneth E. Hedge, County Surveyor

James S. Swift
 James S. Swift, IN LS 20200054
 February 20, 2019

Washington Township

Section 16 T20N, R1W	Section 15 T20N, R1W
Section 21 T20N, R1W	Section 22 T20N, R1W

SECTION CORNER RECORD

NW 900-350

BOONE COUNTY SURVEYOR'S OFFICE

State Plane grid coordinates NAD83 (2011):
North: 1793206.29 East: 3106275.31 (U.S. survey feet)

Type of monument: Harrison, 4" disk 'Section Corner'
Depth: Three inches above adjacent ground

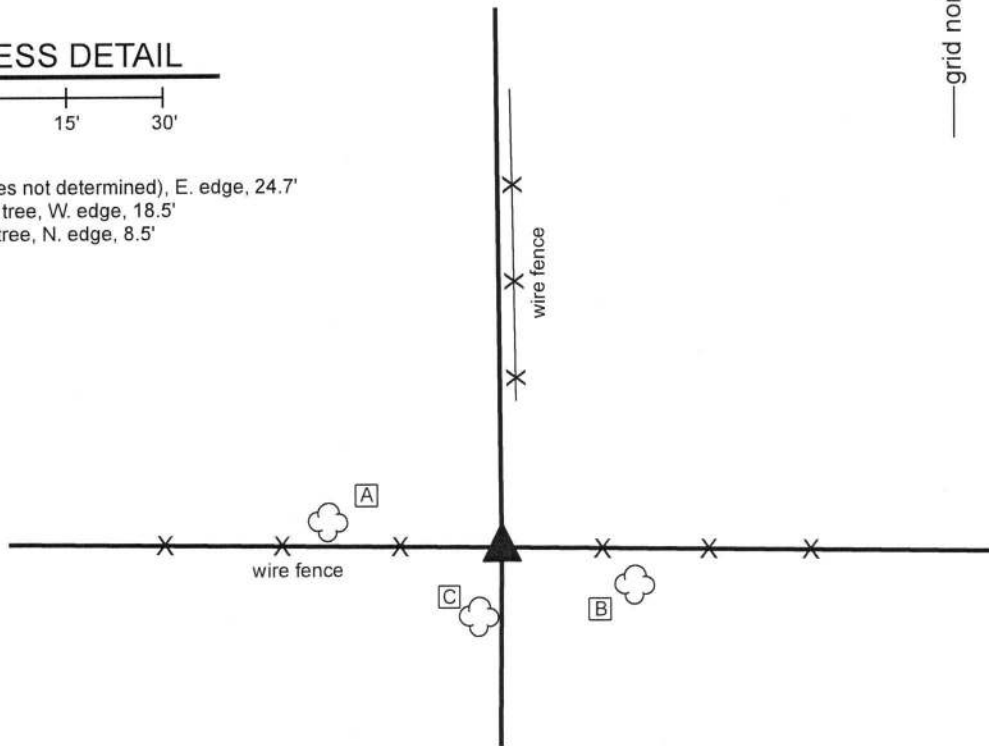
Indiana tie card references:
IN02_T20NR1W16_76 IN02_T20NR1W21_04



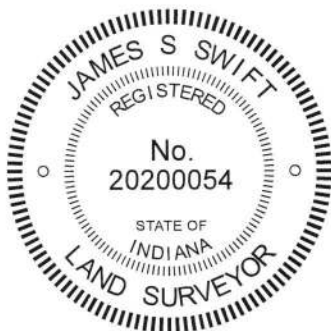
CORNER WITNESS DETAIL

SCALE 1" = 30'

- A - 48" diameter tree (species not determined), E. edge, 24.7'
- B - 19" diameter hackberry tree, W. edge, 18.5'
- C - 15" diameter hackberry tree, N. edge, 8.5'



The Harrison monument was set over a stone found.
A BCS record dated March 13-14, 1863 states, with respect to this corner, "Reest'd Set Rock 16x12x10 marked +." No recent BCS tie cards were found referencing this corner.
Excavation was performed at this corner on November 14, 2018. Prior to excavation a steel t-post was found at the approximate intersection of fences to the north, east and west. A broken-off cedar post was found adjacent to the t-post and the top portion of the cedar post was found lying on the ground nearby. Excavation around the base of the post revealed the stone described in the 1863 record slightly southwest of the base of the post. The stone was found at 8 inches deep. An etched "+" mark was clearly visible on the top, southwest sloping side of the stone. With the top 8 inches of the stone exposed, it measured 10 inches E-W by 12 inches N-S, matching the dimensions recited in the 1863 record. The stone appeared to be undisturbed and was accepted as marking the corner. The stone was left in place, as found. The top 8 inches on the stone were encased in concrete and a Harrison monument was set directly over the top, high point of the stone, slightly NE of the etched mark.
This corner was originally established as a wood post in 1829.



Kenneth E. Hedge, County Surveyor

James S. Swift, IN LS 20200054
January 16, 2019

Washington
Township

Section 16
T20N, R1W

Section 21
T20N, R1W

SECTION CORNER RECORD

BOONE COUNTY SURVEYOR'S OFFICE

NW 900-400

State Plane grid coordinates NAD83 (CORSS96):

North: 1793233.30 East: 3103594.69 (U.S. survey feet)

Type of monument: Harrison, 4" disk 'Section Corner'

Depth: One inch below adjacent road surface

Indiana tie card references:

IN02_T20NR1E17_80 IN02_T20NR1E16_72

IN02_T20NR1E20_08 IN02_T20NR1E21_00

CORNER WITNESS DETAIL

SCALE 1" = 30'

- A - Mag nail set in E. side power pole, 2' a.g., 27.0'
- B - Boone County witness mark, flush, 32.2'
- C - Boone County witness mark, flush, 29.2'

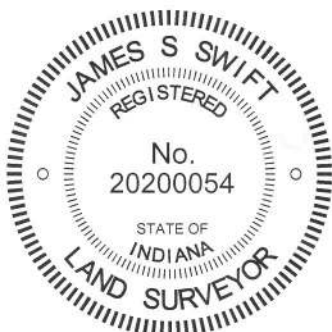
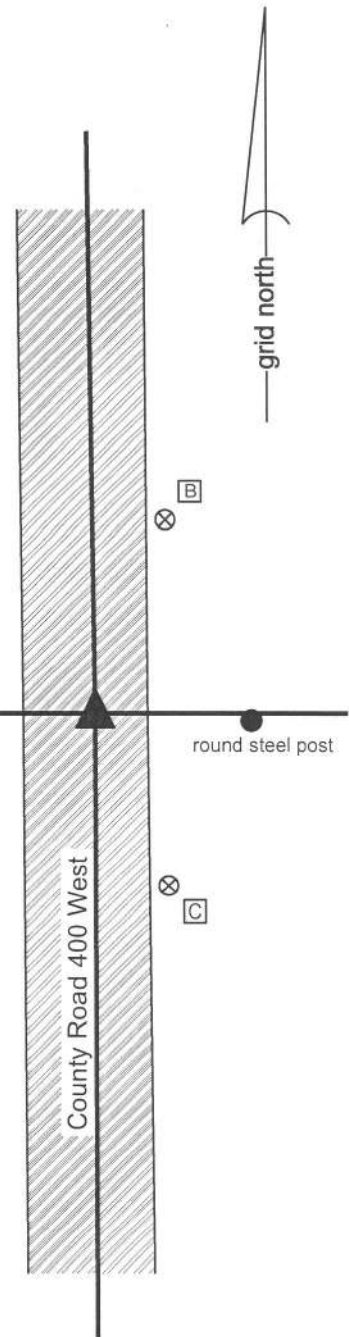
Boone County witness mark is a 3/8" diameter x 2' long rebar bearing a metal cap stamped "Boone County Witness Point."

The Harrison monument was set over a stone found.

A BCS record of March 13-14, 1863 states, with respect to this corner, "Reest'd from trees. The Ash is standing, the other is cut down. Set Rock 17x10x10 marked X." It is noted that most BCS records refer to the mark on the stone as as "+". On this particular record the "+" is obliterated and marked over with an "X". No recent BCS tie cards were found referencing this corner.

Excavation was performed at this corner on September 12, 2014. Prior to excavation, a 3/4 inch diameter rebar was found at 4 inches deep in a hole in the asphalt. Excavation revealed a stone found at 16 inches, east of the rebar. The stone was embedded in the clay layer below the road, protruding 2 to 3 inches out of the clay into the bottom of the road. The top of the stone was triangular in shape and appeared to be vertical, though the top of the stone was sloping with the high point at the northwest tip. An deeply etched X mark was clearly visible at the northwest tip. Notably, the mark was not oriented with cardinal directions in the fashion of most marks found on the top of corner stones. This orientation appeared to fit with the written record wherein the "+" was replaced with an "X". The stone was measured to be 9 inches N-S by 9 inches E-W, though the measurements were slightly subjective, given the irregular shape of the top of the stone. The 1863 records calls for 10x10. 12 inches was exposed on the west side of the rock and the stone appeared to be yet taller. The stone was accepted as being the same monument called for in the 1863 record and was held as marking the corner. A Harrison monument was set directly over the etched mark on the top, northwest corner of the stone. The rebar, removed during excavation, had been 2.7 feet west of the mark on the stone. The source of the rebar is not known.

This corner was originally established as a wood post in 1829.



Kenneth E. Hedge
 Kenneth E. Hedge, County Surveyor

James S. Swift
 James S. Swift, IN LS 20200054

March 27, 2015

Washington Township

Section 17 T20N, R1E	Section 16 T20N, R1E
Section 20 T20N, R1E	Section 21 T20N, R1E

PHOTOGRAPHIC DOCUMENTATION

Date of photography: September 12, 2014

The stone as originally found.



The more fully exposed, viewed from the west.



The stone, brushed, with much of the vertical east side exposed and the etched "x" mark visible at the northwest tip of the stone.



View from above the stone, looking north along County Road 400 West.



Close-up of the northwest tip of the stone, washed and scrubbed to show the etched mark.



For details and documentation, refer to related sheet "Section Corner Record."

SECTION CORNER RECORD

NW 950-300

BOONE COUNTY SURVEYOR'S OFFICE

State Plane grid coordinates NAD83 (CORS96):

North: 1795830.66 East: 3108943.42 (U.S. survey feet)

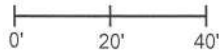
Type of monument: Harrison, 4" disk 'Section Corner'

Depth: six inches below adjacent gravel road surface

Indiana tie card references:

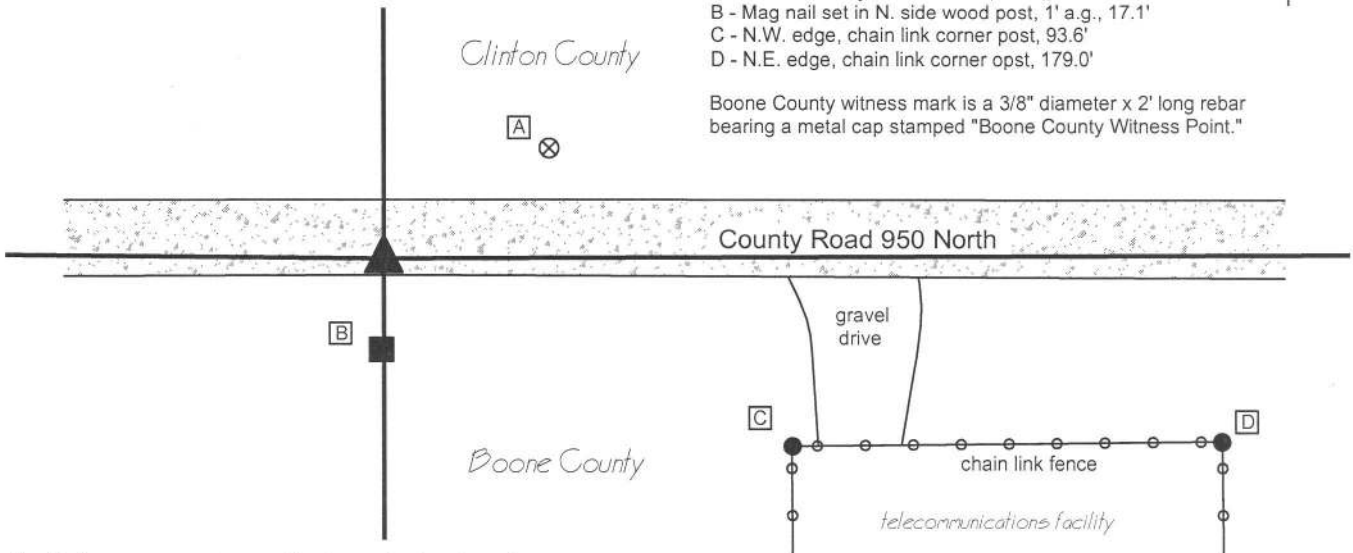
IN02_T20NR1W16_44 IN02_T20NR1W15_36

CORNER WITNESS DETAIL

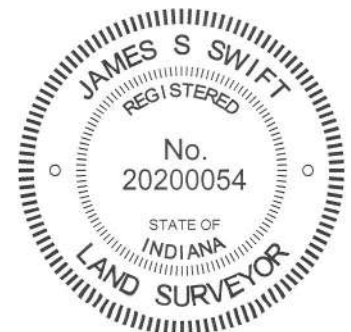
SCALE 1" = 40' 

- A - Boone County witness mark, flush,, 41.5'
- B - Mag nail set in N. side wood post, 1' a.g., 17.1'
- C - N.W. edge, chain link corner post, 93.6'
- D - N.E. edge, chain link corner opst, 179.0'

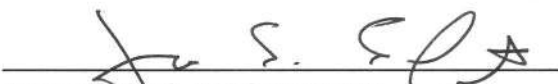
Boone County witness mark is a 3/8" diameter x 2' long rebar bearing a metal cap stamped "Boone County Witness Point."



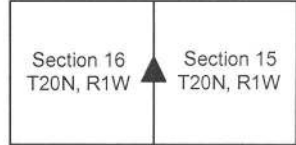
The Harrison monument was set in place of a stone found. No specific descriptions of this corner were found in the BCS Surveyor's Record, though the corner is mentioned as the terminal point for measurements in a record of October 13, 1847. A Clinton County tie card dated October 15, 1981 shows the corner but makes no mention of what monument may have been present. This corner was excavated on September 3, 2014. Prior to excavation, a rebar was found at 1 inch deep in the gravel road and a stone was visible at the surface, slightly above flush. Both of these monuments were towards the south edge of the road but fit well with the longer centerlines to the east and west. Excavation was performed around the stone and it was determined to be 12 inches E-W by 8 inches N-S by 12 inches tall. The bottom 8 inches of the stone were embedded in the clay layer below the road. The top four inches were within the material of the road bed. The stone was generally vertical but appeared to be leaning slightly to the south. The stone was removed and another stone was found partially below and slightly north of the upper stone. The bottom stone was 16 inches N-S by 8 inches E-W by 4 inches tall, fully embedded in the clay. The lower stone was generally oriented in cardinal directions, though cocked slightly clockwise of due N-S. It appeared that the upper stone had most likely been above the lower stone originally but may have been leaned and displaced slightly to the south. Given the position of the stone near the south edge of the road, it is reasonable to conclude that road grading equipment could have disturbed the stone, leaning it to the south. Notably, the lower stone was very near to one rod (16.5 feet) north of post on the south side of the road, a distance found to be a common offset for old posts from section corner stones. The position of the center of the lower stone was held as marking the corner and a Harrison monument was set at this position. Both stones and the rebar were removed during excavation. The rebar had been 0.6 north and 0.6 west of the point held as the corner. This corner was originally established as a wood post in 1829.




 Kenneth E. Hedge, County Surveyor


 James S. Swift, IN LS 20200054
 March 27, 2015

Jackson Twp
 Clinton County
 Washington Twp
 Boone County



PHOTOGRAPHIC DOCUMENTATION

Date of photography: September 3, 2014

The top stone, visible at the surface of the road.
View of County Road 950 North to the west.



The top stone and the post
on the south side of the road.



The lower stone and the post
on the south side of the road.



The lower stone as originally exposed.



For details and documentation, refer to related sheet "Section Corner Record."

SECTION CORNER RECORD

NW 950-300

BOONE COUNTY SURVEYOR'S OFFICE

State Plane grid coordinates NAD83 (CORS96):

North: 1795830.66 East: 3108943.42 (U.S. survey feet)

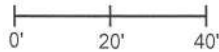
Type of monument: Harrison, 4" disk 'Section Corner'

Depth: six inches below adjacent gravel road surface

Indiana tie card references:

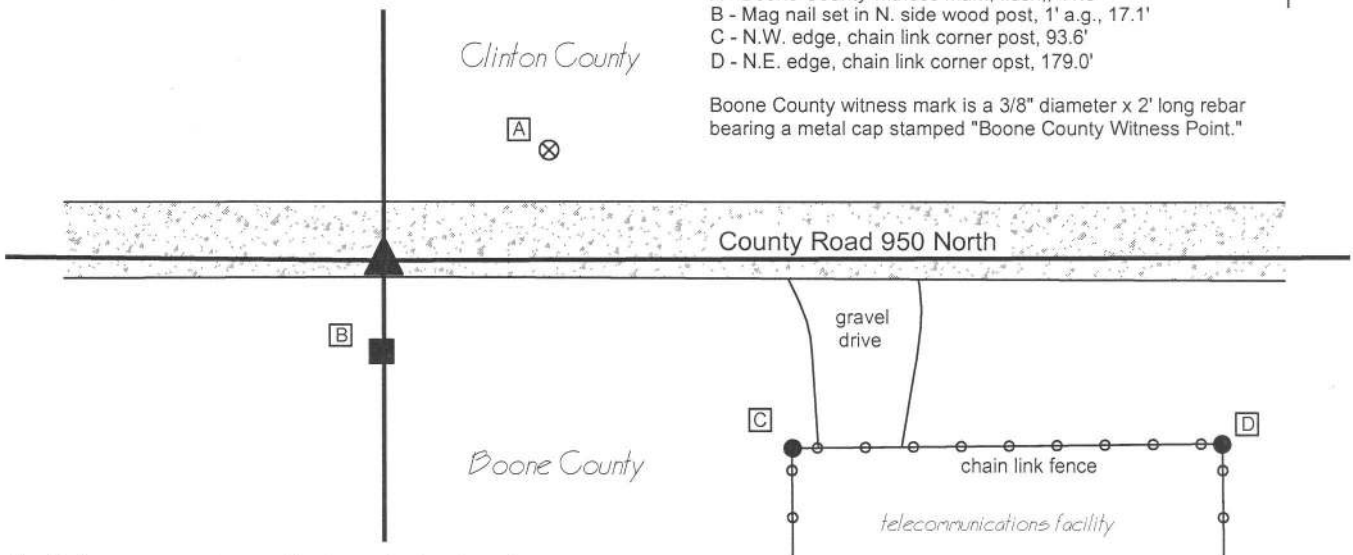
IN02_T20NR1W16_44 IN02_T20NR1W15_36

CORNER WITNESS DETAIL

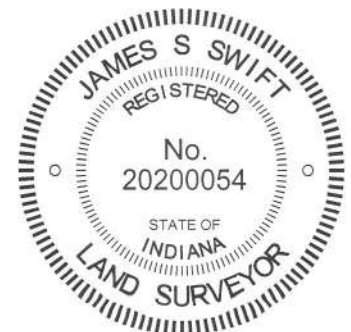
SCALE 1" = 40' 

- A - Boone County witness mark, flush,, 41.5'
- B - Mag nail set in N. side wood post, 1' a.g., 17.1'
- C - N.W. edge, chain link corner post, 93.6'
- D - N.E. edge, chain link corner opst, 179.0'

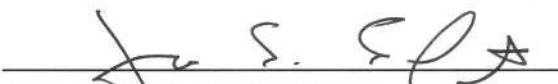
Boone County witness mark is a 3/8" diameter x 2' long rebar bearing a metal cap stamped "Boone County Witness Point."



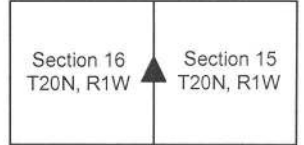
The Harrison monument was set in place of a stone found. No specific descriptions of this corner were found in the BCS Surveyor's Record, though the corner is mentioned as the terminal point for measurements in a record of October 13, 1847. A Clinton County tie card dated October 15, 1981 shows the corner but makes no mention of what monument may have been present. This corner was excavated on September 3, 2014. Prior to excavation, a rebar was found at 1 inch deep in the gravel road and a stone was visible at the surface, slightly above flush. Both of these monuments were towards the south edge of the road but fit well with the longer centerlines to the east and west. Excavation was performed around the stone and it was determined to be 12 inches E-W by 8 inches N-S by 12 inches tall. The bottom 8 inches of the stone were embedded in the clay layer below the road. The top four inches were within the material of the road bed. The stone was generally vertical but appeared to be leaning slightly to the south. The stone was removed and another stone was found partially below and slightly north of the upper stone. The bottom stone was 16 inches N-S by 8 inches E-W by 4 inches tall, fully embedded in the clay. The lower stone was generally oriented in cardinal directions, though cocked slightly clockwise of due N-S. It appeared that the upper stone had most likely been above the lower stone originally but may have been leaned and displaced slightly to the south. Given the position of the stone near the south edge of the road, it is reasonable to conclude that road grading equipment could have disturbed the stone, leaning it to the south. Notably, the lower stone was very near to one rod (16.5 feet) north of post on the south side of the road, a distance found to be a common offset for old posts from section corner stones. The position of the center of the lower stone was held as marking the corner and a Harrison monument was set at this position. Both stones and the rebar were removed during excavation. The rebar had been 0.6 north and 0.6 west of the point held as the corner. This corner was originally established as a wood post in 1829.




 Kenneth E. Hedge, County Surveyor


 James S. Swift, IN LS 20200054
 March 27, 2015

Jackson Twp
 Clinton County
 Washington Twp
 Boone County



PHOTOGRAPHIC DOCUMENTATION

Date of photography: September 3, 2014

The top stone, visible at the surface of the road.
View of County Road 950 North to the west.



The top stone and the post
on the south side of the road.



The lower stone and the post
on the south side of the road.



The lower stone as originally exposed.



For details and documentation, refer to related sheet "Section Corner Record."

SECTION CORNER RECORD

NW 950-400

BOONE COUNTY SURVEYOR'S OFFICE

State Plane grid coordinates NAD83 (CORS96):

North: 1795887.45 East: 3103560.89 (U.S. survey feet)

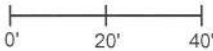
Type of monument: Harrison, 4" disk 'Section Corner'

Depth: one inch below adjacent road surface

Indiana tie card references:

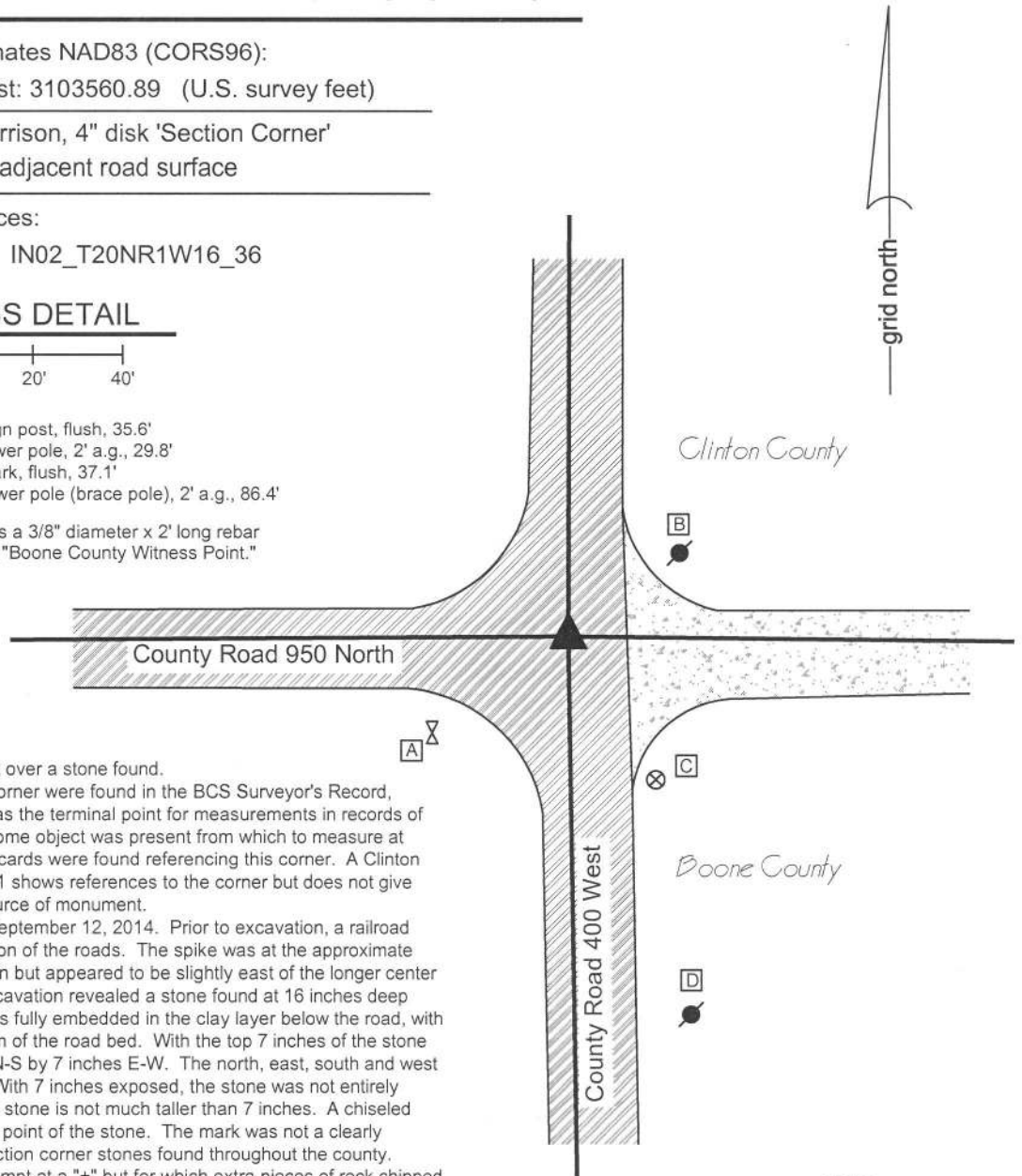
IN02_T20NR1W17_44 IN02_T20NR1W16_36

CORNER WITNESS DETAIL

SCALE 1" = 40' 

- A - North edge, metal stop sign post, flush, 35.6'
- B - Mag nail set in S. side power pole, 2' a.g., 29.8'
- C - Boone County witness mark, flush, 37.1'
- D - Mag nail set in N. side power pole (brace pole), 2' a.g., 86.4'

Boone County witness mark is a 3/8" diameter x 2' long rebar bearing a metal cap stamped "Boone County Witness Point."

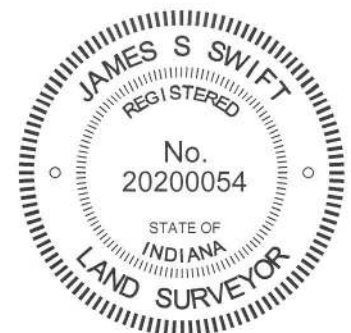


The Harrison monument was set over a stone found. No specific descriptions of this corner were found in the BCS Surveyor's Record, though the corner is mentioned as the terminal point for measurements in records of 1847 and 1863, indicating that some object was present from which to measure at those times. No recent BCS tie cards were found referencing this corner. A Clinton County tie card October 15, 1981 shows references to the corner but does not give information about the type or source of monument.

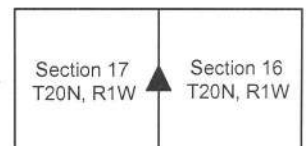
This corner was excavated on September 12, 2014. Prior to excavation, a railroad spike was found in the intersection of the roads. The spike was at the approximate center of the physical intersection but appeared to be slightly east of the longer center lines to the north and south. Excavation revealed a stone found at 16 inches deep west of the spike. The stone was fully embedded in the clay layer below the road, with the top of the stone at the bottom of the road bed. With the top 7 inches of the stone exposed, it measured 6 inches N-S by 7 inches E-W. The north, east, south and west sides were all flat and vertical. With 7 inches exposed, the stone was not entirely stable and it is believed that the stone is not much taller than 7 inches. A chiseled mark was found on the top, high point of the stone. The mark was not a clearly defined "+" as is common on section corner stones found throughout the county. Rather, it appeared to be an attempt at a "+" but for which extra pieces of rock chipped away during the chiseling process. The stone was accepted as the best available evidence of the corner. The stone was left in place and a Harrison monument was set over the top, high point of the stone. The railroad spike, removed during excavation, had been 1.75 feet east and 0.5 foot south of this point.

This corner was originally established as a wood post in 1829.


 Kenneth E. Hedge, County Surveyor



Jackson Twp
 Clinton County
 Washington Twp
 Boone County



James S. Swift, IN LS 20200054
 March 27, 2015

PHOTOGRAPHIC DOCUMENTATION

Date of photography: September 12, 2014

The stone as originally found.



The stone from above, brushed.
Note the partial mark on the top.



View from the south, looking across the stone and north along Clinton County Road 200 West (northerly extension of Boone County 400 West).



View from the east, looking across the stone and west along County Road 950 North



For details and documentation, refer to related sheet "Section Corner Record."