

SECTION CORNER RECORD

BOONE COUNTY SURVEYOR'S OFFICE

NE 300-800

State Plane grid coordinates NAD83 (CORS96):
 North: 1762241.59 East: 3166932.02 (U.S. survey feet)

Type of monument: Harrison, 4" disk 'Section Corner'
 Depth: six inches below adjacent gravel road surface

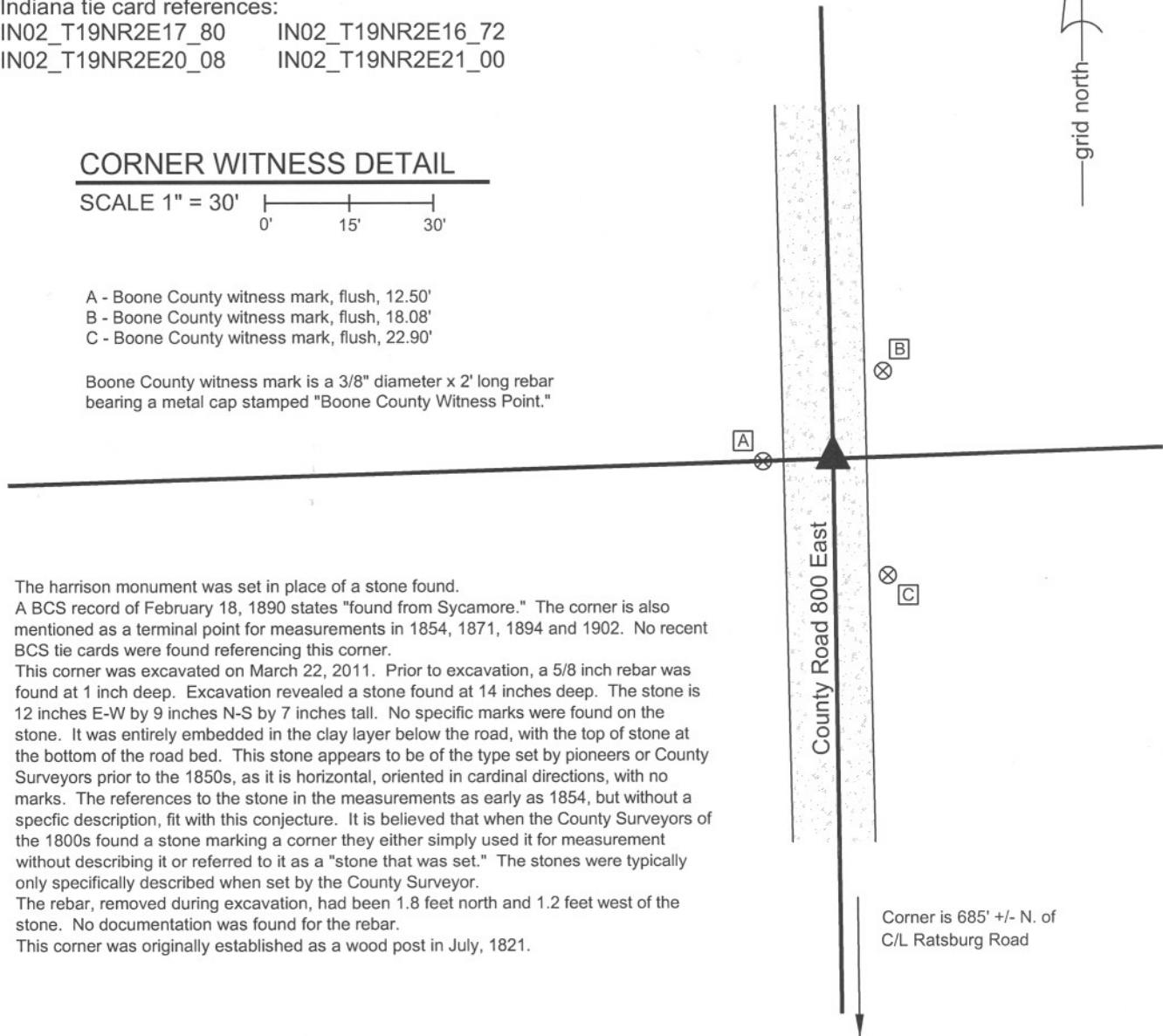
Indiana tie card references:
 IN02_T19NR2E17_80 IN02_T19NR2E16_72
 IN02_T19NR2E20_08 IN02_T19NR2E21_00

CORNER WITNESS DETAIL

SCALE 1" = 30'

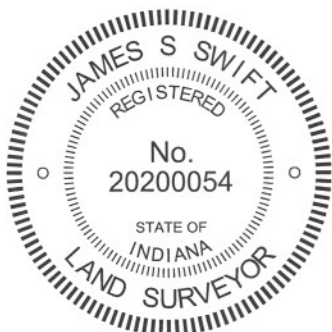
- A - Boone County witness mark, flush, 12.50'
- B - Boone County witness mark, flush, 18.08'
- C - Boone County witness mark, flush, 22.90'

Boone County witness mark is a 3/8" diameter x 2' long rebar bearing a metal cap stamped "Boone County Witness Point."



The harrison monument was set in place of a stone found.
 A BCS record of February 18, 1890 states "found from Sycamore." The corner is also mentioned as a terminal point for measurements in 1854, 1871, 1894 and 1902. No recent BCS tie cards were found referencing this corner.
 This corner was excavated on March 22, 2011. Prior to excavation, a 5/8 inch rebar was found at 1 inch deep. Excavation revealed a stone found at 14 inches deep. The stone is 12 inches E-W by 9 inches N-S by 7 inches tall. No specific marks were found on the stone. It was entirely embedded in the clay layer below the road, with the top of stone at the bottom of the road bed. This stone appears to be of the type set by pioneers or County Surveyors prior to the 1850s, as it is horizontal, oriented in cardinal directions, with no marks. The references to the stone in the measurements as early as 1854, but without a specific description, fit with this conjecture. It is believed that when the County Surveyors of the 1800s found a stone marking a corner they either simply used it for measurement without describing it or referred to it as a "stone that was set." The stones were typically only specifically described when set by the County Surveyor.
 The rebar, removed during excavation, had been 1.8 feet north and 1.2 feet west of the stone. No documentation was found for the rebar.
 This corner was originally established as a wood post in July, 1821.

Corner is 685' +/- N. of
 C/L Ratsburg Road



Kenneth E. Hedge
 Kenneth E. Hedge, County Surveyor

James S. Swift
 James S. Swift, IN LS 20200054
 March 1, 2012

Marion Township

Section 17 T19N, R2E	Section 16 T19N, R2E
Section 20 T19N, R2E	Section 21 T19N, R2E

PHOTOGRAPHIC DOCUMENTATION

Date of photography: March 22, 2011

View of the stone as first exposed.



The stone removed from the road bed. The scratch mark visible on top of the stone was made by the excavator at the time of excavation.



View from the north, looking across the stone and south along County Road 800 East.



For details and documentation, refer to related sheet "Section Corner Record."

SECTION CORNER RECORD

NE 300-850

BOONE COUNTY SURVEYOR'S OFFICE

State Plane grid coordinates NAD83 (CORS96):

North: 1762328.66 East: 3169605.46 (U.S. survey feet)

Type of monument: Harrison, 4" disk 'Section Corner'

Depth: One inch below adjacent road surface

Indiana tie card references:

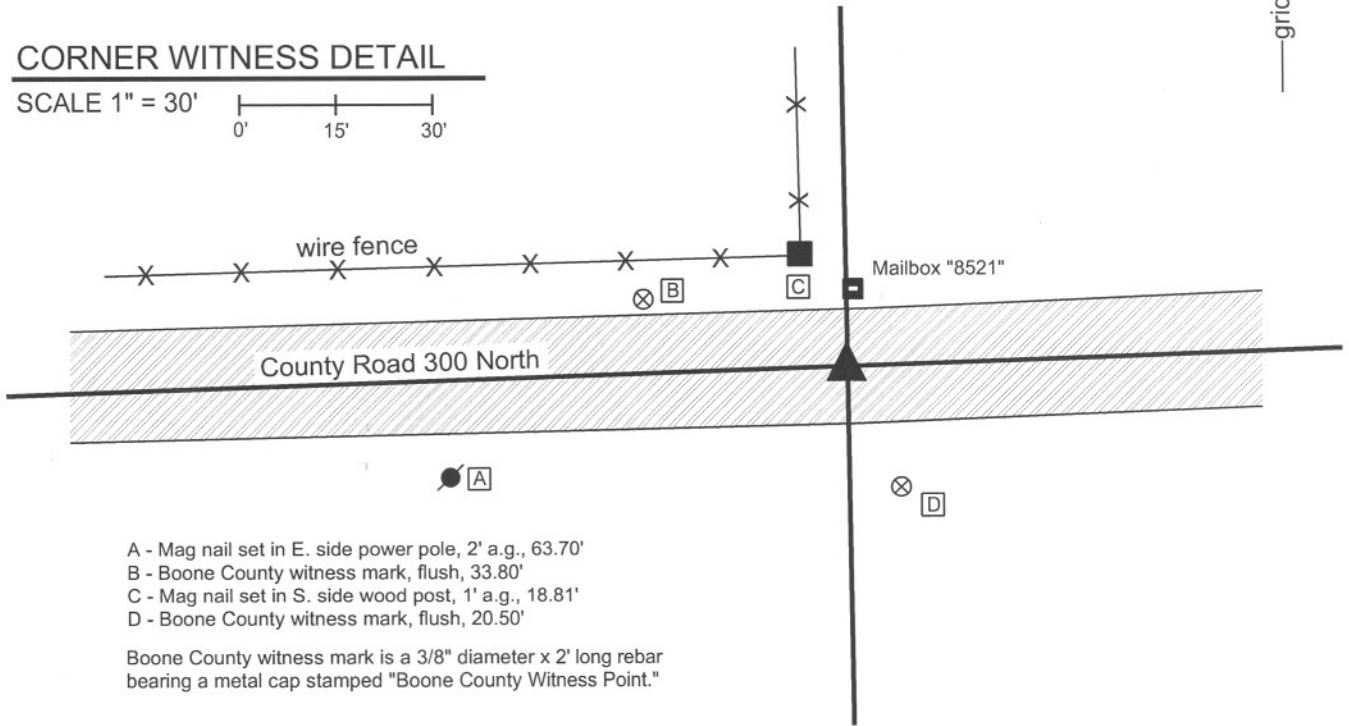
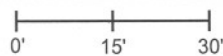
IN02_T19NR2E16_76

IN02_T19NR2E21_04



CORNER WITNESS DETAIL

SCALE 1" = 30'



- A - Mag nail set in E. side power pole, 2' a.g., 63.70'
- B - Boone County witness mark, flush, 33.80'
- C - Mag nail set in S. side wood post, 1' a.g., 18.81'
- D - Boone County witness mark, flush, 20.50'

Boone County witness mark is a 3/8" diameter x 2' long rebar bearing a metal cap stamped "Boone County Witness Point."

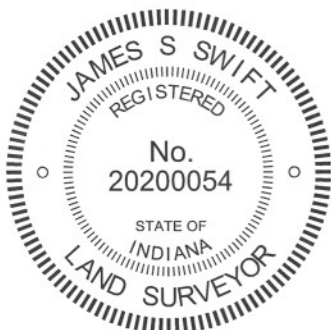
The harrison monument was set over a stone found.

A BCS record of August 10-13, 1854 states "Reestablished. Set Rock 10 by 14 in." A BCS record of March 17, 1887 states "Found point for B from walnut witness stump standing yet. The rock had been taken out."

This corner was excavated on October 27, 2011. Prior to excavation a nail in a plastic washer was found at the surface. The nail did not be of the type typically used by surveyors and appeared to be more of a carpenter's type nail. The nail was removed as a mag nail was found below the top seal layer of asphalt, 0.5 foot WSW of the surface nail. Excavation revealed a 1/2 inch diameter rebar at 4 inches deep 0.7 foot SW of the original nail, hence slightly SW of the found mag nail. Further excavation revealed the stone described in the 1854 record at 12 inches deep. The stone measures 10 inches E-W by 14 inches N-S with 7 inches of the top exposed. The entire height of the stone was not measured. The stone is embedded in the clay layer below the road bed. A vague chiseled "+" was found near the top, slightly East of the high point of the stone. No explanation is offered for the statement in the 1887 record that the rock had been taken out, as the rock found in 2011 is believed to be the same rock set in 1854.

All other evidence was removed and the found stone was left in place. A harrison monument was set over the top, high point of the stone, slightly west of the chiseled "+". The nail originally found at the surface had been 0.8 foot north and 0.6 foot west of the top, high point of the stone.

This corner was originally established as a wood corner post in July, 1821.



Kenneth E. Hedge
Kenneth E. Hedge, County Surveyor

James S. Swift
James S. Swift, IN LS 20200054
March 1, 2012

Marion Twp

Section 16
T19N, R2E

Section 21
T19N, R2E

PHOTOGRAPHIC DOCUMENTATION

Date of photography: October 27, 2011

View of the stone as first exposed.



View of the stone more fully exposed.



View from the west looking across the stone and east along County Road 300 North. U.S. 421 crosses in the foreground.



For details and documentation, refer to related sheet "Section Corner Record."

SECTION CORNER RECORD

NE 300-900

BOONE COUNTY SURVEYOR'S OFFICE

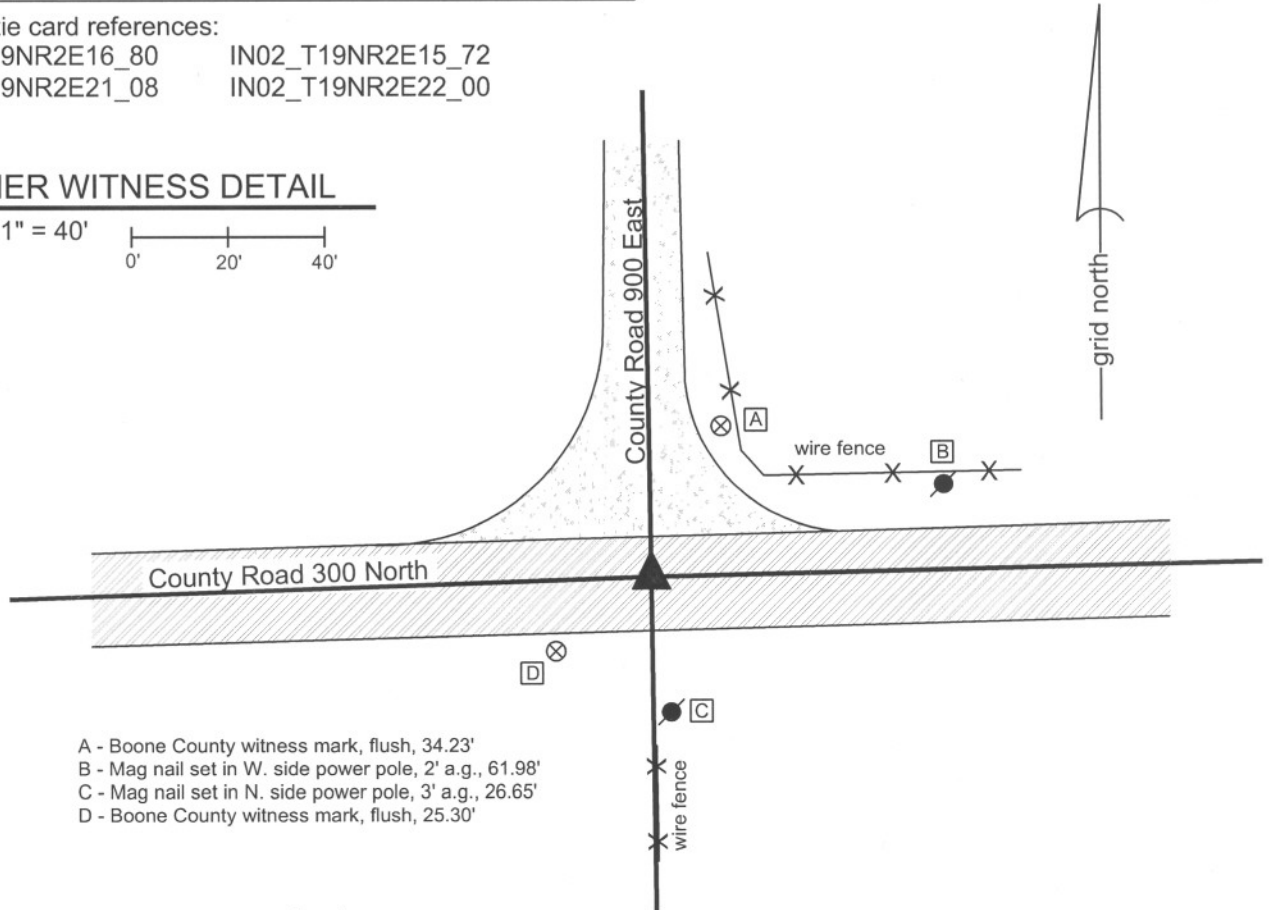
State Plane grid coordinates NAD83 (NSRS 2007):
North: 1762420.07 East: 3172276.24 (U.S. survey feet)

Type of monument: Harrison, 4" disk 'Section Corner'
Depth: two inches below adjacent road surface

Indiana tie card references:
IN02_T19NR2E16_80 IN02_T19NR2E15_72
IN02_T19NR2E21_08 IN02_T19NR2E22_00

CORNER WITNESS DETAIL

SCALE 1" = 40'

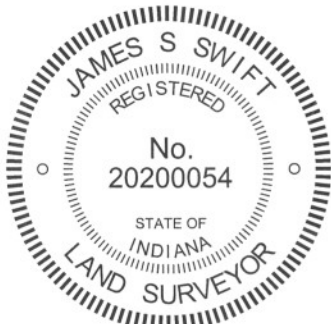


- A - Boone County witness mark, flush, 34.23'
- B - Mag nail set in W. side power pole, 2' a.g., 61.98'
- C - Mag nail set in N. side power pole, 3' a.g., 26.65'
- D - Boone County witness mark, flush, 25.30'

The Harrison monument was set over a stone found.

A BCS record of April 23, 1868 states "Reestablished by producing or extending the corrected line A, H, g and from a marked tree on the line G to F and some appearance of roots of one tree. Set a Rock 21.12 by 9 in. marked +." Field notes from an unknown source dated July 1980 state "No stone set I.P." This corner was excavated on September 9, 2010. Prior to excavation a mag nail was visible approximately 1 inch below the surrounding asphalt. A one inch diameter rebar, 13 inches long, was found directly below the mag nail. Fragments of a wood stake were found at 12 inches deep, several feet north of the rebar. The record stone was found below the wood stake. The stone is vertical, fully embedded in the clay with the top of the stone at the top of the clay layer below the road. The stone measures 12 inches E-W by 9 inches N-S with 15 inches exposed. An etched + is clearly visible on the top, of the stone. The rock does not have a uniform shape on the top and the etched "+" is not at the high point, but is at the approximate of the overall top of the stone. The high point of the stone, at the east edge of the top is 16 inches deep and the etched "+" is at 18 inches deep, as the top slopes down towards the west. The stone was left in place and the Harrison monument was set directly over the etched "+". The mag nail and rebar, both removed during excavation, had been 3.9 feet south and 0.7 foot east of the etched "+" on the stone.

This corner was originally established as a wood post in July, 1821.



Kenneth E. Hedge
Kenneth E. Hedge, County Surveyor

James S. Swift
James S. Swift, IN LS 20200054
July 25, 2011

Marion Twp

Section 16 T19N, R2E	Section 15 T19N, R2E
Section 21 T19N, R2E	Section 22 T19N, R2E

PHOTOGRAPHIC DOCUMENTATION

Date of photography: September 2, 2010

Some fragments of the wood stake above the stone.



The stone as first exposed.



The stone being exposed. Further pictures are not available due to camera failure during excavation.



For details and documentation, refer to related sheet "Section Corner Record."

SECTION CORNER RECORD

BOONE COUNTY SURVEYOR'S OFFICE

NE 350-800

State Plane grid coordinates NAD83 (2011):

North: 1764879.12 East: 3166870.28 (U.S. survey feet)

Type of monument: Harrison, 4" disk 'Section Corner'

Depth: Six inches below adjacent gravel road surface

Indiana tie card references:

IN02_T19NR2E16_36 IN02_T19NR2E17_44

CORNER WITNESS DETAIL

SCALE 1" = 30'

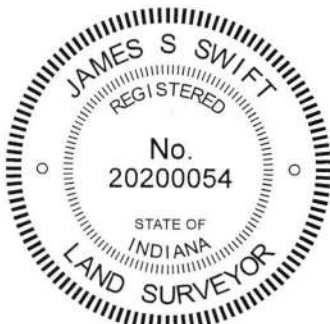
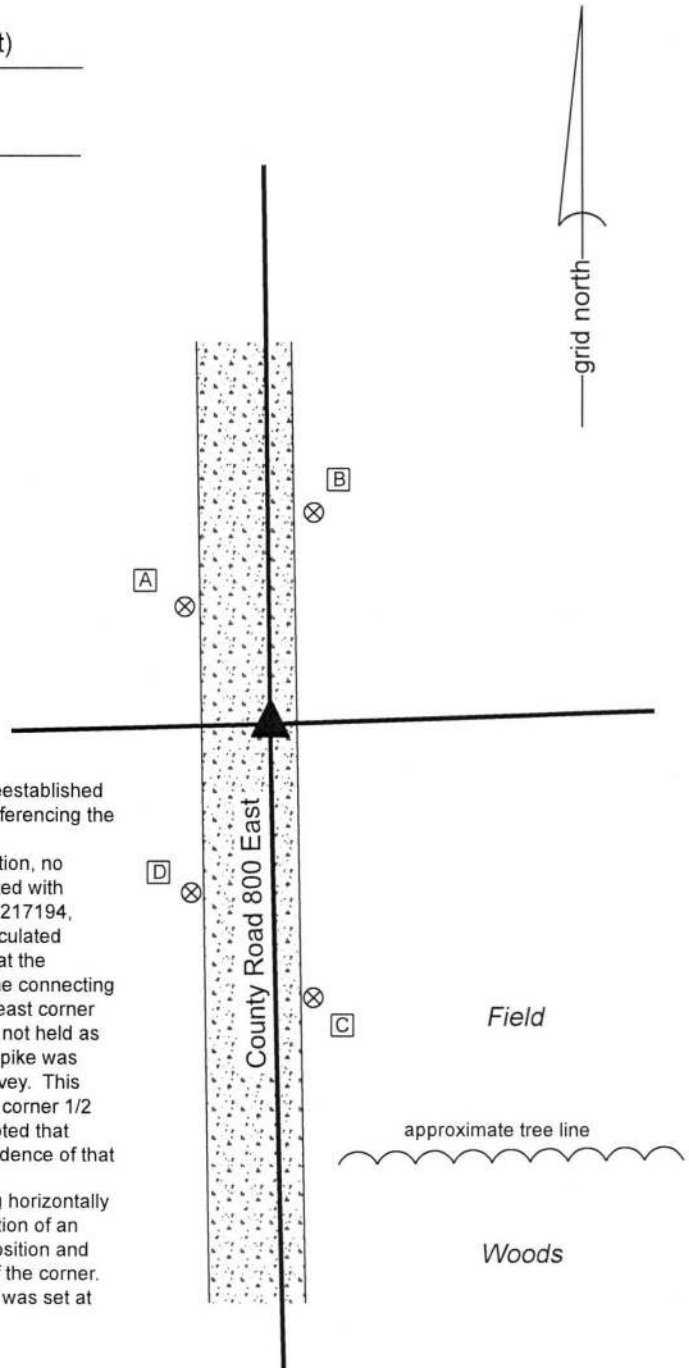
- A - Boone County witness mark, flush, 22.6'
- B - Boone County witness mark, flush, 33.6'
- C - Boone County witness mark, flush, 43.1'
- D - Boone County witness mark, flush, 28.9'

The Harrison monument was set at a calculated position. A BCS record of February 15, 1871 states, with respect to this corner, "Reestablished from stump of Elm. Drove stake." No recent BCS tie cards were found referencing the corner.

Excavation was performed at this corner on April 9, 2018. Prior to excavation, no metal monuments were found. A position for the corner had been calculated with respect to a survey by Jerry L. Carter, LS S0350 recorded as document 0217194, November 26, 2002, in the Office of the Boone County Recorder. The calculated position was specifically established at 988.69 feet north of a rebar found at the northeast corner of a 5.5588 acre parcel on the northerly extension of a line connecting that rebar with a railroad spike shown on the survey as marking the southeast corner of the southeast quarter of section 17. It is noted that the railroad spike is not held as the corner by this office (See Corner NE-300-800) but the position of the spike was held for purposes of reconstructing the lines and corners of the Carter survey. This calculated position works reasonably well with the relative positions of the corner 1/2 mile north (see corner NE-400-800) and the corner 1/4 mile north. It is noted that previous excavation at the corner 1/4 mile north revealed no additional evidence of that corner.

During excavation, a 14 inch long section of 5/8 inch rebar was found lying horizontally near the corner, evidently previously displaced by a road grader. Excavation of an area extending approximately 4 feet in all directions from the calculated position and well into the clay layer below the road bed revealed no further evidence of the corner. The calculated position for the corner was held and a Harrison monument was set at this position.

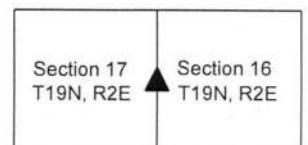
This corner was originally established as a wood post in 1821.



Kenneth E. Hedge
Kenneth E. Hedge, County Surveyor

James S. Swift
James S. Swift, IN LS 20200054
May 23, 2018

Marion Township



SECTION CORNER RECORD

NE 350-900

BOONE COUNTY SURVEYOR'S OFFICE

State Plane grid coordinates NAD83 (CORS 96):

North: 1765071.79 East: 3172236.86 (U.S. survey feet)

Type of monument: Harrison, 4" disk 'Section Corner'

Depth: six inches below adjacent gravel road surface

Indiana tie card references:

IN02_T19NR2E15_36

IN02_T19NR2E16_44

CORNER WITNESS DETAIL

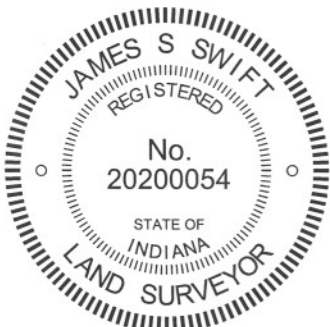
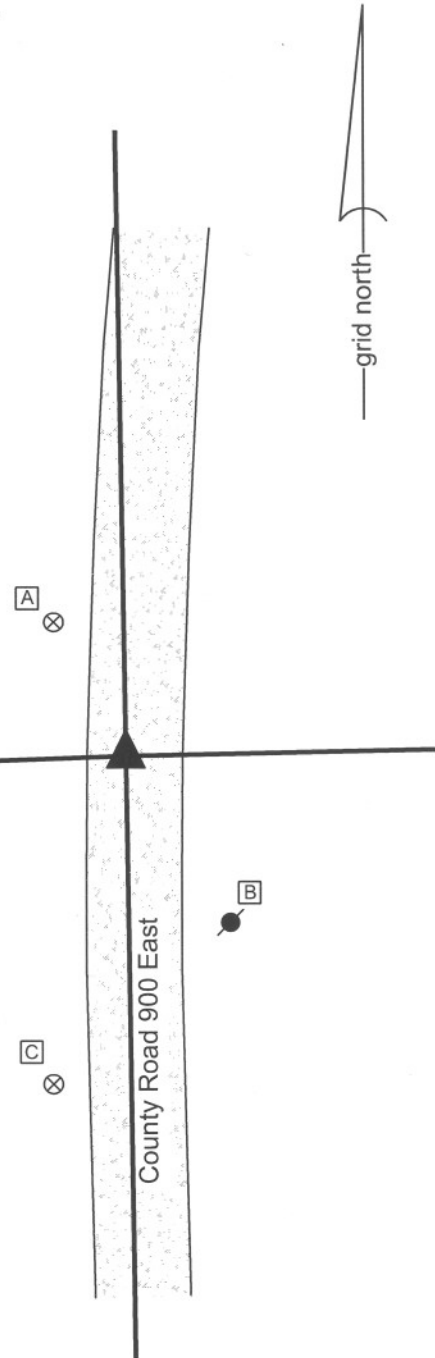
SCALE 1" = 30'



- A - Boone County witness mark, flush, 23.78'
- B - Mag nail set in N. side power pole, 3' a.g., 29.44'
- C - Boone County witness mark, flush, 52.49'

Boone County witness mark is a 3/8" diameter x 2' long rebar bearing a metal cap stamped "Boone County Witness Point."

The harrison monument was set in place of a stone found.
 A BCS record of April 22, 1868 states "Reestablished. Set a Rock 15.8 by 8 in. Marked + on top and small one (three cornered) 3-1/2.2.1-1/2 place under it." A undated BCS tie card shows the corner as a rebar with no documentation of source.
 This corner was excavated on November 16, 2011. Prior to excavation a 5/8 inch diameter rebar was found at the surface, bent slightly towards the south. Excavation revealed that the rebar was set along the north edge of the stone described in the 1868 record. The rock was 15 inches tall by 8 inches N-S by 8 inches E-W. A small triangular rock was found under the larger rock. The triangular rock fits the description of "three cornered" but does not match the dimensions. Measuring the rock as a triangle, it is 3 1/2 inches on the base by 5 inches tall by 1 3/4 inches thick. Perhaps the transcription of the field notes from 1868 altered the "5" dimension to "2." In any case, the record stone from 1868 was found and held as marking the corner. The stone was nearly at the surface, though still well embedded in the clay layer below the thin road bed. No specific marks were found. Any mark on top would likely have been scraped of by the blade of a road grader, which must surely have scraped over the rock repeatedly. The stone and rebar were both removed and a harrison monument was set in the position of the top of the stone.
 This corner was originally established as a wood post in July, 1821.

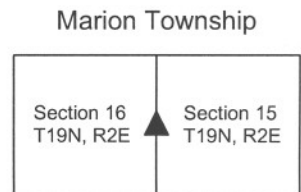


Kenneth E. Hedge

 Kenneth E. Hedge, County Surveyor

James S. Swift

 James S. Swift, IN LS 20200054
 March 1, 2012



PHOTOGRAPHIC DOCUMENTATION
Date of photography: November 16, 2011

View of the stone and bent rebar from the north and above.



View of the stone displaced from the road bed.



View from the south looking across the stone and rebar and north along County Road 900 East.



View of the stone removed from the road bed.



The stone stood up in the orientation in which it was found.



For details and documentation, refer to related sheet "Section Corner Record."

SECTION CORNER RECORD

NE 400-800

BOONE COUNTY SURVEYOR'S OFFICE

State Plane grid coordinates NAD83 (NSRS 2007):

North: 1767525.47 East: 3166835.76 (U.S. survey feet)

Type of monument: Harrison, 4" disk 'Section Corner'

Depth: Six inches below the gravel road surface.

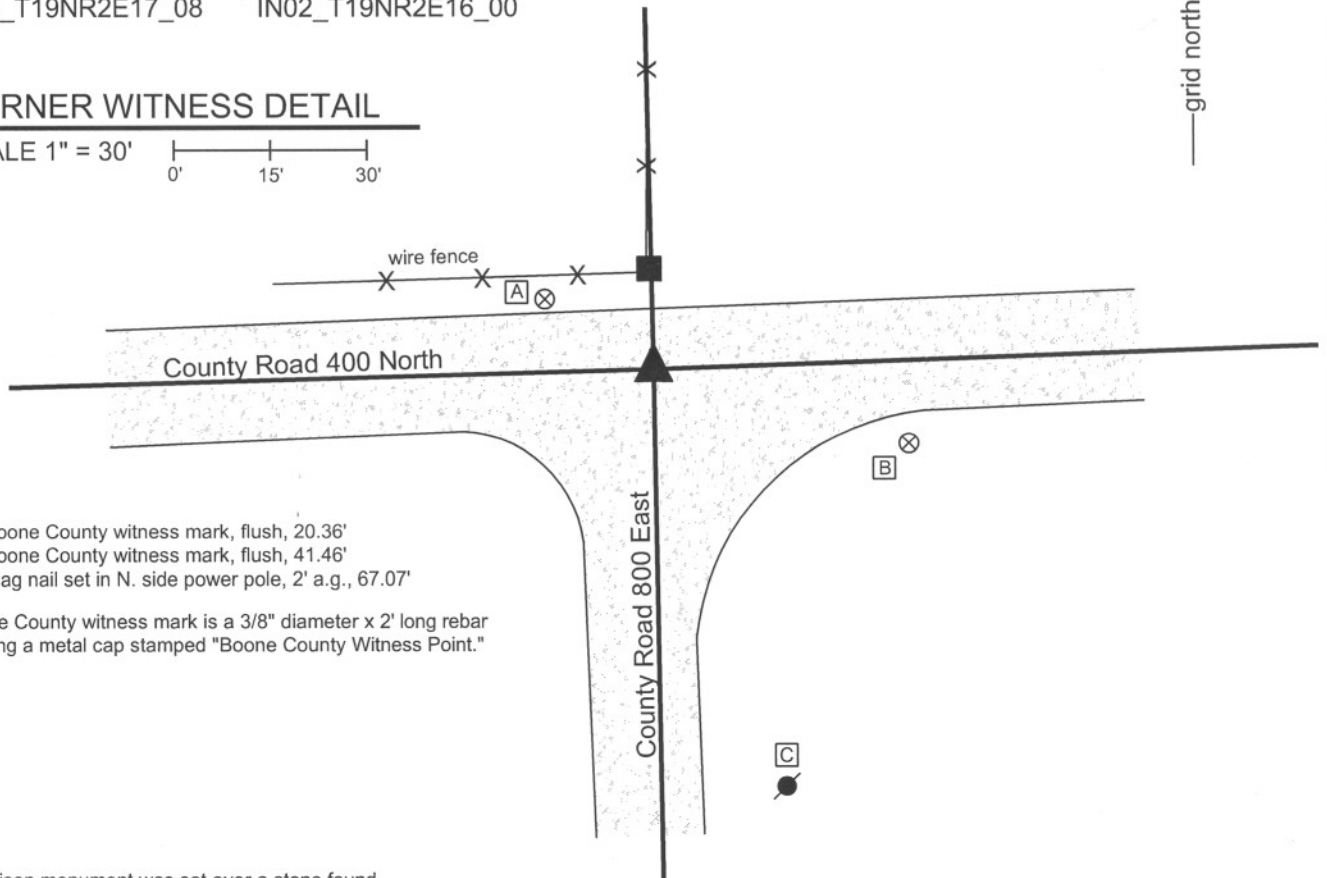
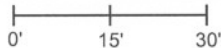
Indiana tie card references:

IN02_T19NR2E08_80 IN02_T19NR2E09_72

IN02_T19NR2E17_08 IN02_T19NR2E16_00

CORNER WITNESS DETAIL

SCALE 1" = 30'



- A - Boone County witness mark, flush, 20.36'
- B - Boone County witness mark, flush, 41.46'
- C - Mag nail set in N. side power pole, 2' a.g., 67.07'

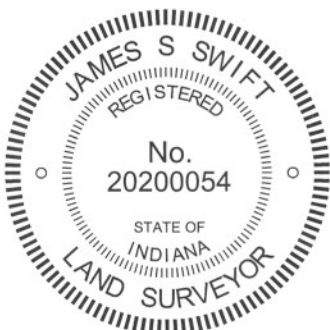
Boone County witness mark is a 3/8" diameter x 2' long rebar bearing a metal cap stamped "Boone County Witness Point."

The harrison monument was set over a stone found.

A BCS record of June 17, 1873 states "Reestablished. Set two Rocks one 13.8 by 6 in + under one is 7.5.4 +." A BCS tie card dated October 21, 1971 states "found stone, set rail." A BCS tie card dated May 30, 1975 states "Stone found w/ Rail at angle."

This corner was excavated on August 24, 2010. A section of railroad rail was found leaning substantially towards the south. Excavation revealed that the rail was suspended over a stone, with the bottom of the rail to the north of the stone and the top of the rail to the south of the stone. The stone is the record lower stone from 1873, measuring 7 inches N-S by 5 inches E-W by 4 inches tall. An etched "+" was clearly visible on the top, center of the stone. The stone is 30 inches deep. The bottom of the road bed in this immediate vicinity is at 18 to 20 inches deep. Hence the record top stone, at 13 inches tall, would have protruded 1 to 3 inches out of the clay layer below the road into the bottom of the road bed, which is in character with many other stones found from that era. The stone was left in place and the harrison monument was set over the etched "+" on the top of the stone. The rail was removed during excavation.

This corner was originally established as a wood post in July, 1921.



Kenneth E. Hedge
 Kenneth E. Hedge, County Surveyor

James S. Swift
 James S. Swift, IN LS 20200054
 July 25, 2011

Marion Township

Section 8 T19N, R2E	Section 9 T19N, R2E
Section 17 T19N, R2E	Section 16 T19N, R2E

PHOTOGRAPHIC DOCUMENTATION

Date of photography: August 24, 2010

The top of the railroad rail, as found.



View of the stone as first exposed.



View of the stone from above and south.



The stone from above, showing the etched mark.



For details and documentation, refer to related sheet "Section Corner Record."

SECTION CORNER RECORD

NE 400-850

BOONE COUNTY SURVEYOR'S OFFICE

State Plane grid coordinates NAD83 (NSRS 2007):

North: 1767615.36 East: 3169522.63 (U.S. survey feet)

Type of monument: Harrison, 4" disk 'Section Corner'

Depth: Six inches below the gravel road surface.

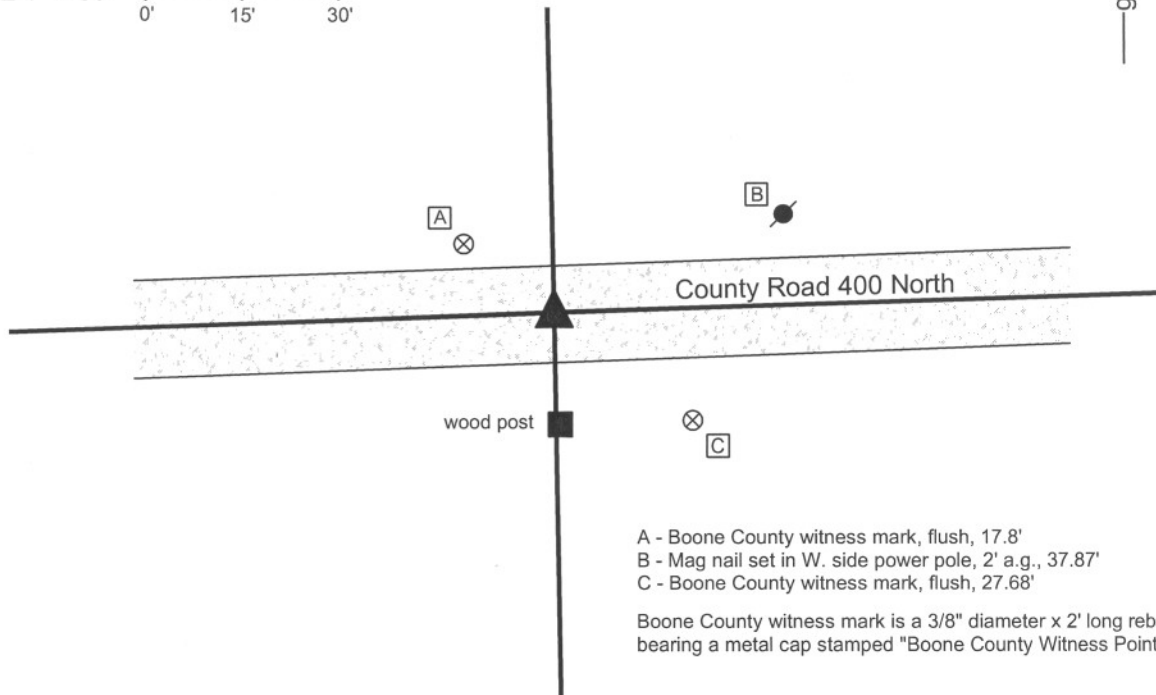
Indiana tie card references:

IN02_T19NR2E09_76

IN02_T19NR2E16_04

CORNER WITNESS DETAIL

SCALE 1" = 30'



- A - Boone County witness mark, flush, 17.8'
- B - Mag nail set in W. side power pole, 2' a.g., 37.87'
- C - Boone County witness mark, flush, 27.68'

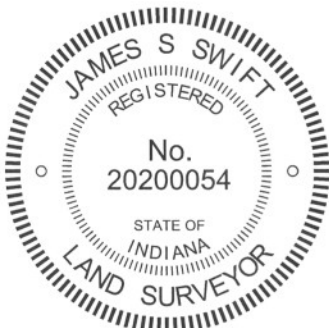
Boone County witness mark is a 3/8" diameter x 2' long rebar bearing a metal cap stamped "Boone County Witness Point."

The harrison monument was set in place of a railroad rail found.

A BCS record of February 13, 1871 states "Reestablished. Set Rock 20.10.6 +." A BCS tie card dated October 21, 1970 states "Found stone, set rail."

This corner was excavated on August 31, 2010. A railroad rail was found at 6 inches below grade. The section of rail was vertical and apparently undisturbed. No other physical evidence of the corner was found. It is accepted that the stone found in 1970 was removed at that time and replaced with the rail, which was a common procedure by BCS field crews at that time. The harrison monument was set in place of the railroad rail.

This corner was originally established as a wood post in July, 1821.



Kenneth E. Hedge
Kenneth E. Hedge, County Surveyor

James S. Swift
James S. Swift, IN LS 20200054
July 25, 2011

Marion Twp

Section 9
T19N, R2E



Section 16
T19N, R2E

SECTION CORNER RECORD

NE 400-900

BOONE COUNTY SURVEYOR'S OFFICE

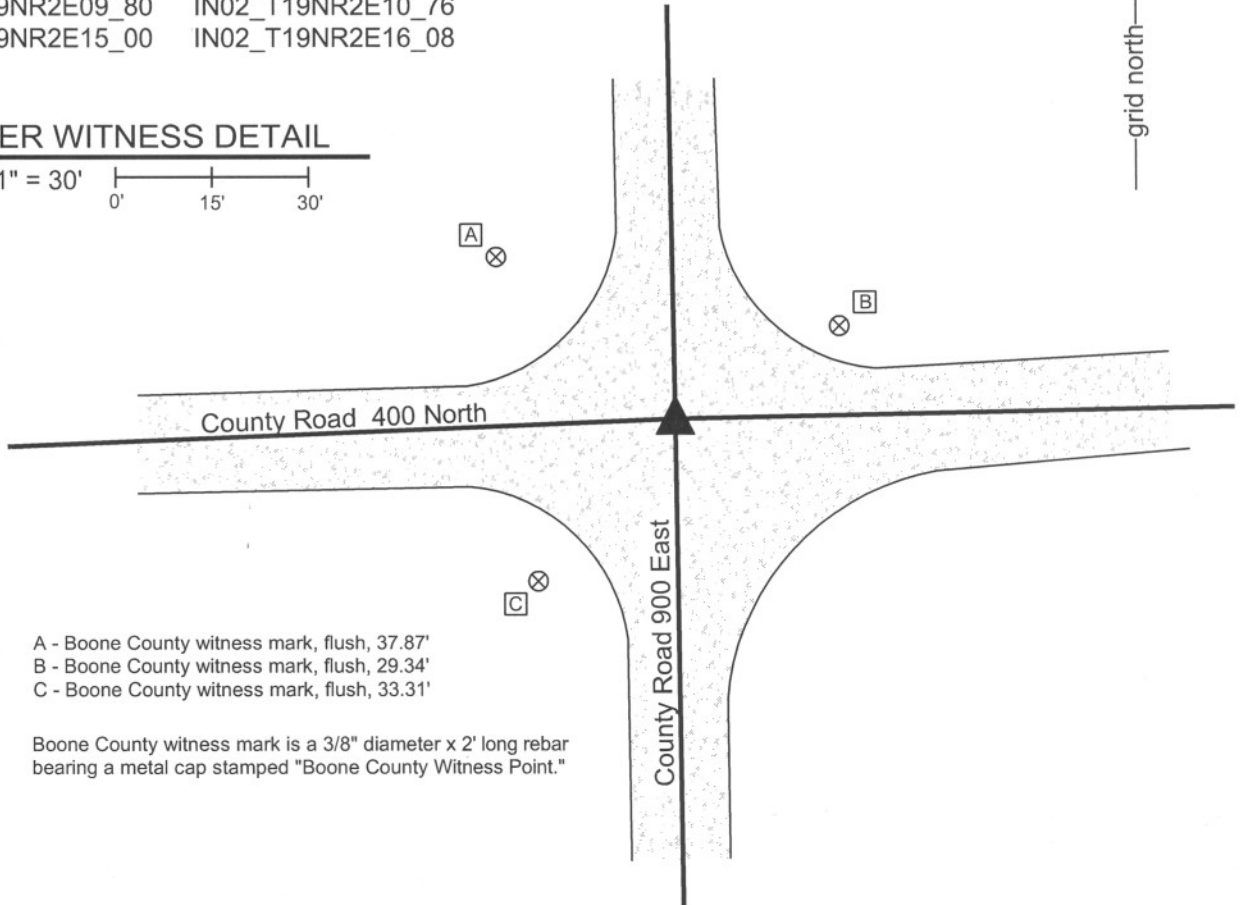
State Plane grid coordinates NAD83 (NSRS 2007):
North: 1767722.61 East: 3172196.32 (U.S. survey feet)

Type of monument: Harrison, 4" disk 'Section Corner'
Depth: Six inches below the gravel road surface.

Indiana tie card references:
IN02_T19NR2E09_80 IN02_T19NR2E10_76
IN02_T19NR2E15_00 IN02_T19NR2E16_08

CORNER WITNESS DETAIL

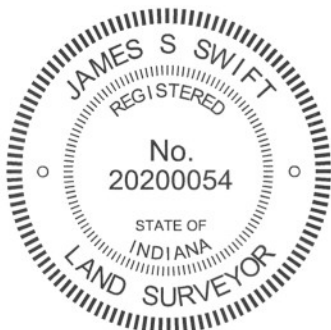
SCALE 1" = 30'
0' 15' 30'



- A - Boone County witness mark, flush, 37.87'
- B - Boone County witness mark, flush, 29.34'
- C - Boone County witness mark, flush, 33.31'

Boone County witness mark is a 3/8" diameter x 2' long rebar bearing a metal cap stamped "Boone County Witness Point."

The harrison monument was set over a stone found.
A BCS record of December 24, 1867 states "Reestablished from stumps of both trees. Set Rock 21.17 by 15 in. Marked + on top." No recent BCS tie cards were found referencing this corner.
This corner was excavated on August 24, 2010. Prior to excavation a 5/8 inch diameter rebar was found at 3 inches deep, bent considerably. Excavation revealed the record stone found at 22 inches deep. The stone is embedded in the clay layer below the road. With 12 inches exposed, the stone measures 14 inches E-W by 17 inches N-S and remains firmly embedded in the clay. The stone is of a soft sandstone type material and the top of the stone was marred during excavation. No specific marks were found on the stone, but a mark on the top of the stone may have been obliterated during excavation or at some previous time, given the softness of the material. The harrison monument was set over the top, center of the stone. The rebar, removed during excavation, had been 1.1 feet west and 0.7 foot south of this point. The source of the rebar is not known.
This corner was originally established as a wood post in July, 1821.



Kenneth E. Hedge
Kenneth E. Hedge, County Surveyor

James S. Swift
James S. Swift, IN LS 20200054
July 25, 2011

Marion Township

Section 9 T19N, R2E	Section 10 T19N, R2E
Section 16 T19N, R2E	Section 15 T19N, R2E

PHOTOGRAPHIC DOCUMENTATION

Date of photography: August 24, 2010

View of the stone as first exposed.



View of the stone from above.



View of the stone from the east.



View from above the stone, looking west along County Road 400 North.



For details and documentation, refer to related sheet "Section Corner Record."