

SECTION CORNER RECORD

NW 300-300

BOONE COUNTY SURVEYOR'S OFFICE

State Plane grid coordinates NAD83 (CORS96):

North: 1761409.08 East: 3108881.80 (U.S. survey feet)

Type of monument: Harrison, 4" disk 'Section Corner'

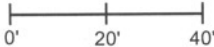
Depth: two inches above adjacent ground

Indiana tie card references:

IN02_T19NR1W16_80 IN02_T19NR1W15_72

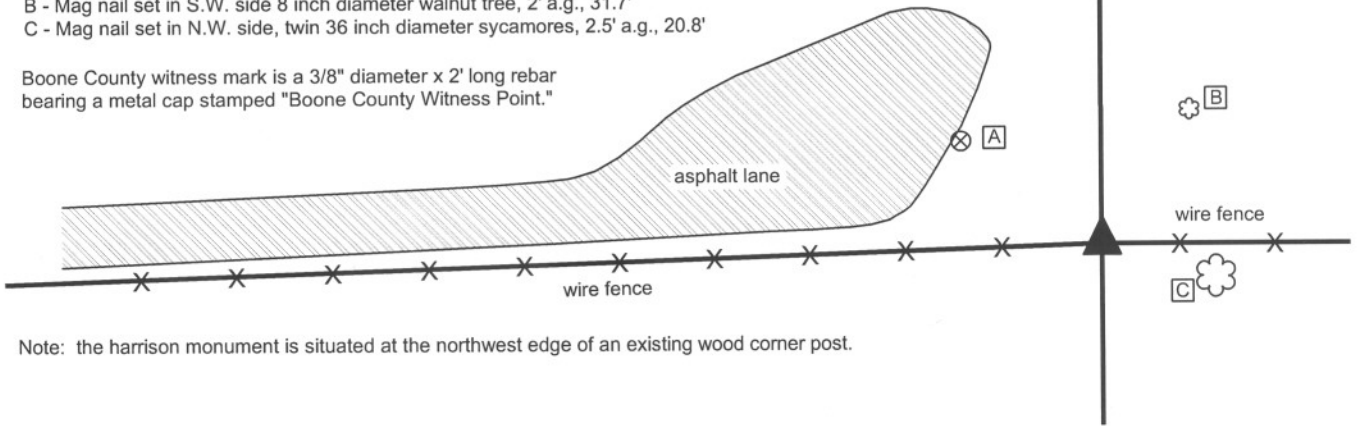
IN02_T19NR1W21_08 IN02_T19NR1W22_00

CORNER WITNESS DETAIL

SCALE 1" = 40' 

- A - Boone County witness mark, flush, 37.1'
- B - Mag nail set in S.W. side 8 inch diameter walnut tree, 2' a.g., 31.7'
- C - Mag nail set in N.W. side, twin 36 inch diameter sycamores, 2.5' a.g., 20.8'

Boone County witness mark is a 3/8" diameter x 2' long rebar bearing a metal cap stamped "Boone County Witness Point."



Note: the harrison monument is situated at the northwest edge of an existing wood corner post.

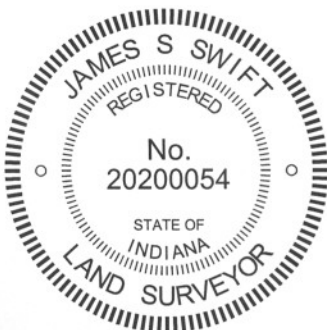
The harrison monument was set in place of a stone found.

A BCS record of May 9, 12 & 13, 1899 states "Reestablished by running line from the north and measuring from east & west for satisfaction. Found C of section 16 from line tree on line between sections 9 & 10. Found c of 16 from witness tree. Found d of 16 from witness stump and rock. Found D of 16 by running line from C (16) through c (16). Established C by running line from D (16) through d (16). Set a rock 9x8x8 in marked +."

No recent BCS tie cards were found referencing this corner.

Reconnaissance and preliminary excavation for this corner occurred on May 1, 2012 with final excavation and monumentation on May 15. Prior to excavation an old wood corner post was found with fence to the east and west and fencing cut off to the north. Wood braces were found on the east and west sides of the post. The stone described in the 1899 record was found at the northwest edge of the post, 6 inches deep. The stone appeared undisturbed and had a distinct etched "+" mark on the top. The stone was removed and found to measure 9 inches E-W by 8 inches N-S by 8 inches tall, as described in the 1899 record. A harrison monument was set in concrete in the position of the etched "+" found on the top of the stone.

This corner was originally established as a wood post in May, 1829.



Kenneth E. Hedge
 Kenneth E. Hedge, County Surveyor

James S. Swift
 James S. Swift, IN LS 20200054
 January 15, 2013

Center Township

Section 16 T19N, R1W	Section 15 T19N, R1W
Section 21 T19N, R1W	Section 22 T19N, R1W

PHOTOGRAPHIC DOCUMENTATION

Date of photography: May 1- 16, 2012

The corner prior to clearing or excavation.



The stone found at the base of the post.



The stone at the base of the post, after being exposed to the weather for two weeks.



The harrison monument set in place of the stone.



For details and documentation, refer to related sheet "Section Corner Record."

SECTION CORNER RECORD

NW 300-350

BOONE COUNTY SURVEYOR'S OFFICE

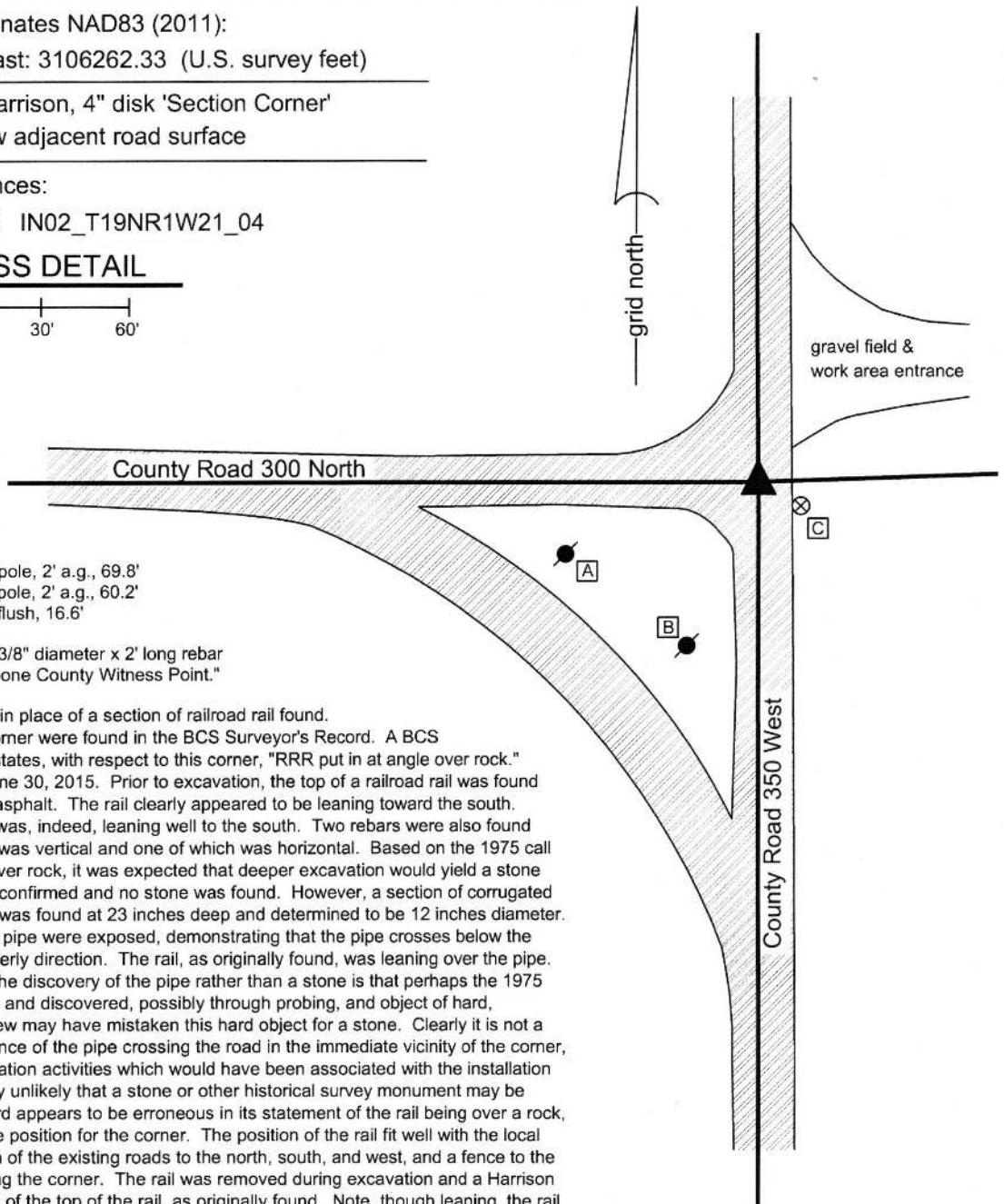
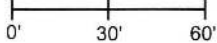
State Plane grid coordinates NAD83 (2011):
North: 1761323.10 East: 3106262.33 (U.S. survey feet)

Type of monument: Harrison, 4" disk 'Section Corner'
Depth: One inch below adjacent road surface

Indiana tie card references:
IN02_T19NR1W16_76 IN02_T19NR1W21_04

CORNER WITNESS DETAIL

SCALE 1" = 60'

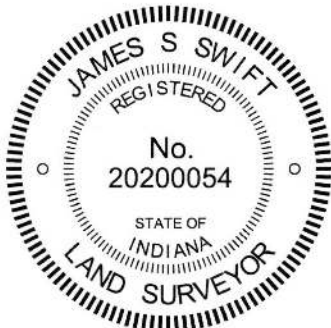
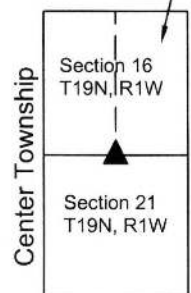


- A - Mag nail set in N. side power pole, 2' a.g., 69.8'
- B - Mag nail set in E. side power pole, 2' a.g., 60.2'
- C - Boone County witness mark, flush, 16.6'

Boone County witness mark is a 3/8" diameter x 2' long rebar bearing a metal cap stamped "Boone County Witness Point."

The Harrison monument was set in place of a section of railroad rail found. No specific descriptions of this corner were found in the BCS Surveyor's Record. A BCS tie card dated September, 1975 states, with respect to this corner, "RRR put in at angle over rock." This corner was excavated on June 30, 2015. Prior to excavation, the top of a railroad rail was found at 8 inches deep in a hole in the asphalt. The rail clearly appeared to be leaning toward the south. Excavation revealed that the rail was, indeed, leaning well to the south. Two rebars were also found adjacent to the rail, one of which was vertical and one of which was horizontal. Based on the 1975 call for the rail being put in at angle over rock, it was expected that deeper excavation would yield a stone found. This expectation was not confirmed and no stone was found. However, a section of corrugated metal pipe was found. The pipe was found at 23 inches deep and determined to be 12 inches diameter. Approximately 2 linear feet of the pipe were exposed, demonstrating that the pipe crosses below the road in a southeasterly-northwesterly direction. The rail, as originally found, was leaning over the pipe. The only explanation offered for the discovery of the pipe rather than a stone is that perhaps the 1975 crew performed minor excavation and discovered, possibly through probing, and object of hard, unyielding material. The 1975 crew may have mistaken this hard object for a stone. Clearly it is not a stone. However, given the presence of the pipe crossing the road in the immediate vicinity of the corner, and in consideration of the excavation activities which would have been associated with the installation of the pipe, it is considered highly unlikely that a stone or other historical survey monument may be found. Even though the 1975 card appears to be erroneous in its statement of the rail being over a rock, the rail was found at a reasonable position for the corner. The position of the rail fit well with the local evidence of the corner in the form of the existing roads to the north, south, and west, and a fence to the east. The rail was held as marking the corner. The rail was removed during excavation and a Harrison monument was set in the position of the top of the rail, as originally found. Note, though leaning, the rail is not considered to have been disturbed given the reference to it being installed at "an angle." This corner was originally established as a wood post in 1829.

East 1/2 of Section 16
Washington Township



Kenneth E. Hedge
Kenneth E. Hedge, County Surveyor

James S. Swift
James S. Swift, IN LS 20200054

March 24, 2016

SECTION CORNER RECORD

NW 300-400

BOONE COUNTY SURVEYOR'S OFFICE

State Plane grid coordinates NAD83 (2011):

North: 1761322.07 East: 3103613.54 (U.S. survey feet)

Type of monument: Harrison, 4" disk 'Section Corner'

Depth: One inch below adjacent road surface

Indiana tie card references:

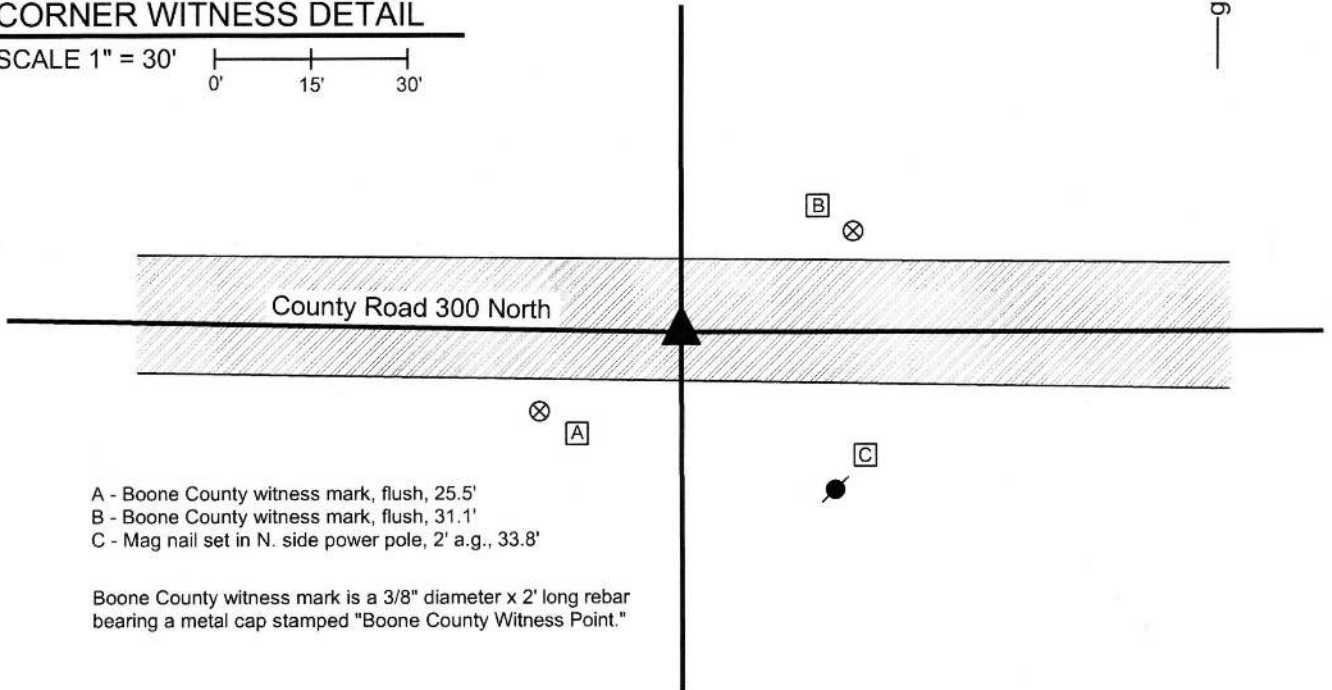
IN02_T19NR1W17_80 IN02_T19NR1W16_72

IN02_T19NR1W20_08 IN02_T19NR1W21_00



CORNER WITNESS DETAIL

SCALE 1" = 30'



- A - Boone County witness mark, flush, 25.5'
- B - Boone County witness mark, flush, 31.1'
- C - Mag nail set in N. side power pole, 2' a.g., 33.8'

Boone County witness mark is a 3/8" diameter x 2' long rebar bearing a metal cap stamped "Boone County Witness Point."

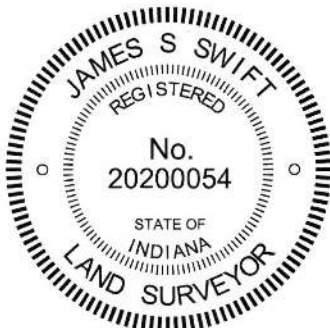
The Harrison monument was set over a vertical section of railroad rail found.

A BCS record of April 8, 1878 states, with respect to this corner, "Set Rock." A BCS tie card dated June 3, 1971 states "Stone located. Replaced stone with RRR."

This corner was excavated on July 2, 2015. Prior to excavation, a railroad spike was found at 3 inches deep in a hole in the asphalt roadway.

Excavation revealed a vertical section of railroad rail found at 13 inches deep. The rail was found to be 0.4 foot west and 0.1 foot north of the railroad spike. Substantial further excavation was not performed, given the statement on the 1971 tie card that the found stone was replaced with a railroad rail. The rail was left in place. The top of the rail was encased in concrete and a Harrison monument was set directly over the rail.

This corner was originally established as a wood post in 1819.



Kenneth E. Hedge, County Surveyor

James S. Swift, IN LS 20200054
March 24, 2016

Washington Township

Section 17 T19N, R1W	Section 16 T19N, R1W
Section 20 T19N, R1W	Section 21 T19N, R1W

Jefferson
Township

Center
Township

SECTION CORNER RECORD

BOONE COUNTY SURVEYOR'S OFFICE

NW 350-300

State Plane grid coordinates NAD83 (CORS96):
 North: 1764063.51 East: 3108876.77 (U.S. survey feet)

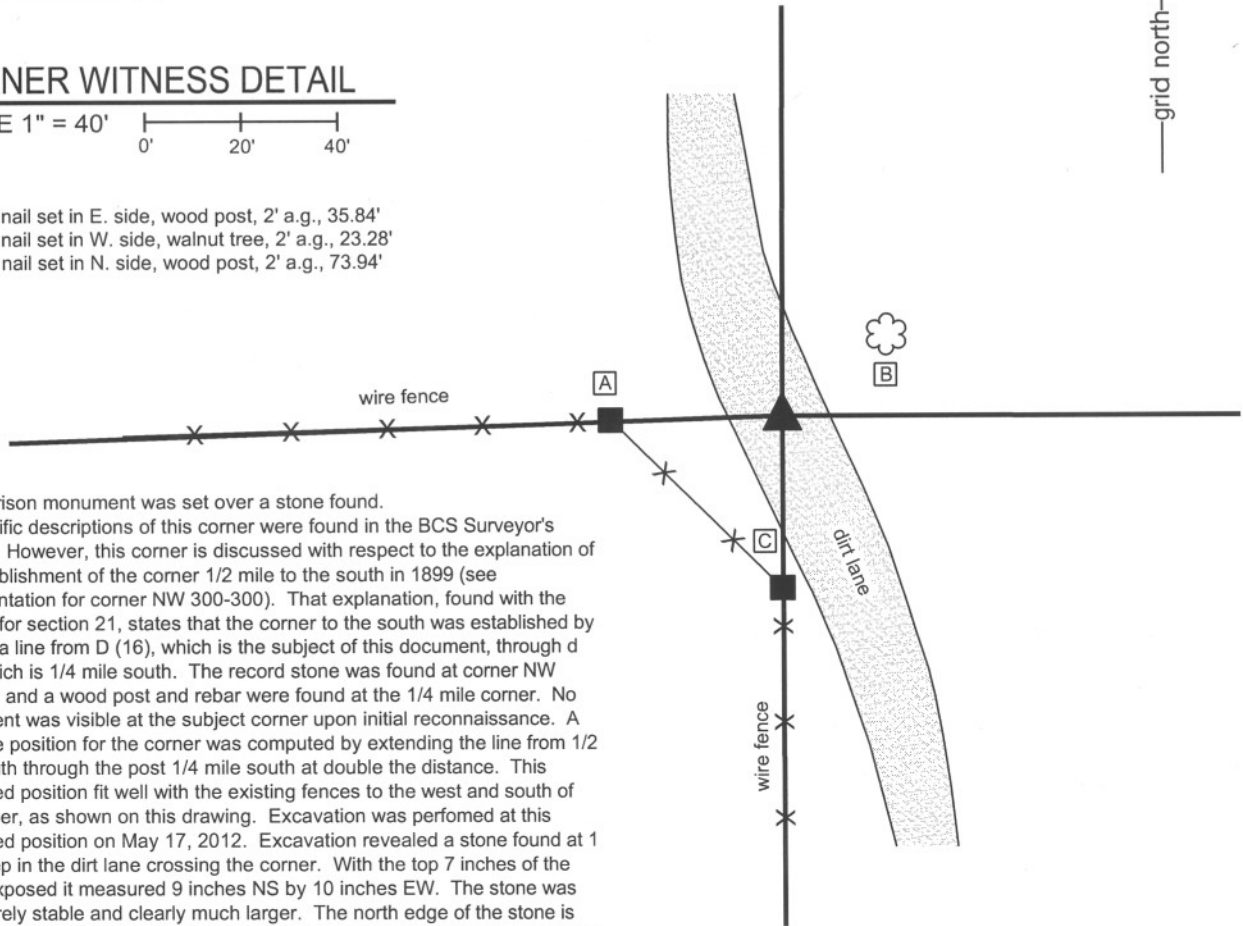
Type of monument: Harrison, 4" disk 'Section Corner'
 Depth: four inches below adjacent dirt lane surface

Indiana tie card references:
 IN02_T19NR1W15_36
 IN02_T19NR1W16_44

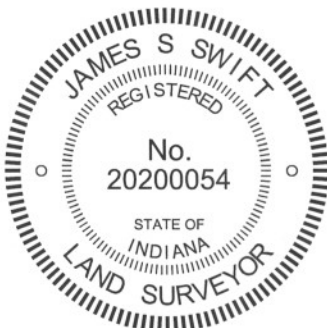
CORNER WITNESS DETAIL

SCALE 1" = 40'

- A - Mag nail set in E. side, wood post, 2' a.g., 35.84'
- B - Mag nail set in W. side, walnut tree, 2' a.g., 23.28'
- C - Mag nail set in N. side, wood post, 2' a.g., 73.94'

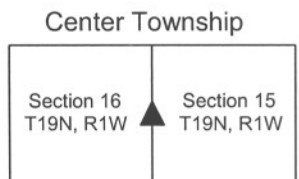


The harrison monument was set over a stone found. No specific descriptions of this corner were found in the BCS Surveyor's Record. However, this corner is discussed with respect to the explanation of the establishment of the corner 1/2 mile to the south in 1899 (see documentation for corner NW 300-300). That explanation, found with the records for section 21, states that the corner to the south was established by running a line from D (16), which is the subject of this document, through d (16), which is 1/4 mile south. The record stone was found at corner NW 300-300 and a wood post and rebar were found at the 1/4 mile corner. No monument was visible at the subject corner upon initial reconnaissance. A probable position for the corner was computed by extending the line from 1/2 mile south through the post 1/4 mile south at double the distance. This computed position fit well with the existing fences to the west and south of the corner, as shown on this drawing. Excavation was performed at this computed position for the corner was computed by extending the line from 1/2 mile south through the post 1/4 mile south at double the distance. This computed position fit well with the existing fences to the west and south of the corner, as shown on this drawing. Excavation was performed at this computed position on May 17, 2012. Excavation revealed a stone found at 1 foot deep in the dirt lane crossing the corner. With the top 7 inches of the stone exposed it measured 9 inches NS by 10 inches EW. The stone was still entirely stable and clearly much larger. The north edge of the stone is flat and vertical. The top off the stone slopes towards the south edge and the high point of the stone is near the north edge. The stone was precisely at the computed position and fits well with all found evidence and correlates well with the 1899 record. The top, high point of the stone was held as marking the corner. The stone was left in place. The top 7 inches of the stone were encased in concrete and harrison monument set over the top, high point. This corner was originally established as a wood post in May, 1829.



Kenneth E. Hedge
 Kenneth E. Hedge, County Surveyor

James S. Swift
 James S. Swift, IN LS 20200054
 January 15, 2013



SECTION CORNER RECORD

NW 400-300

BOONE COUNTY SURVEYOR'S OFFICE

State Plane grid coordinates NAD83 (CORS96):

North: 1766697.91 East: 3108886.25 (U.S. survey feet)

Type of monument: 5/8" rebar with metal cap stamped "Boone County Surveyor"

Depth: Flush with adjacent ground

Indiana tie card references:

IN02_T19NR1W09_80 IN02_T19NR1W10_72

IN02_T19NR1W16_08 IN02_T19NR1W15_00

CORNER WITNESS DETAIL

SCALE 1" = 40'



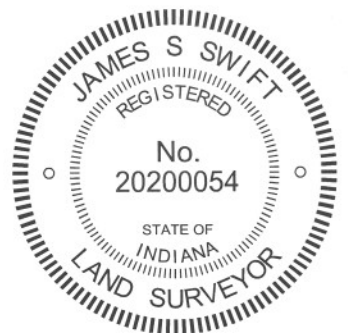
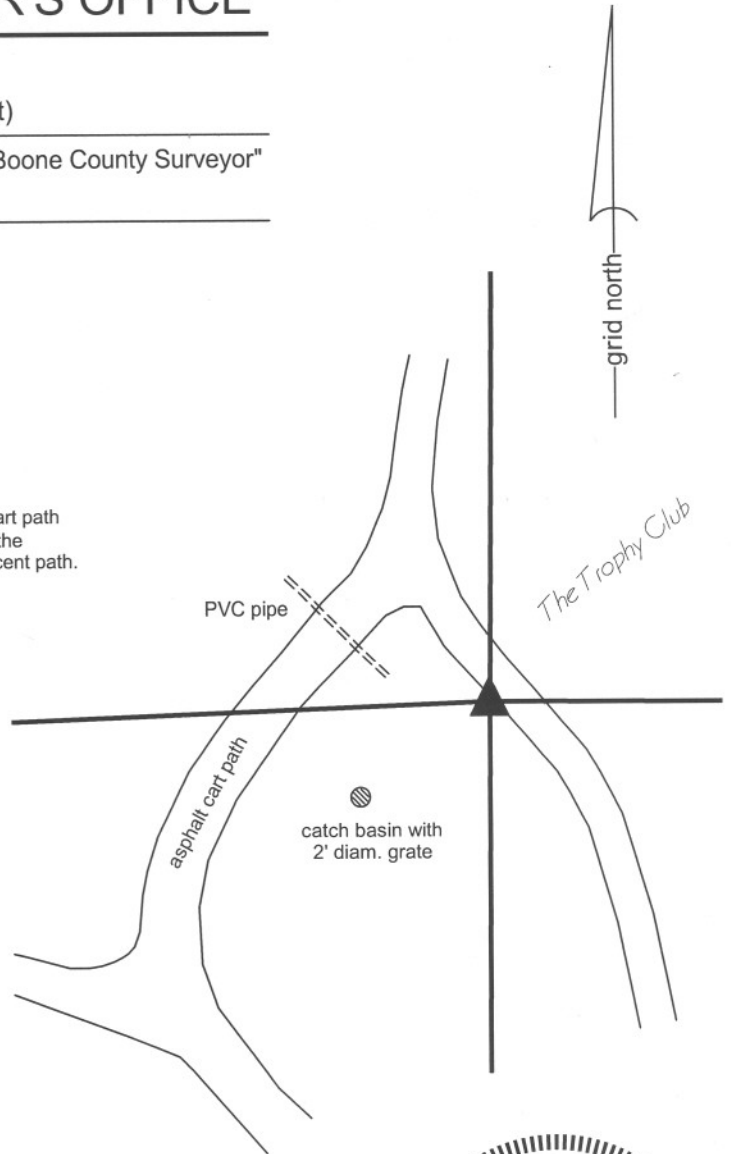
Note: the capped rebar is approximately 1 foot west of the asphalt golf cart path and approximately 25 feet southeasterly along the edge of the path from the intersection of the south edge of the path with the south edge of the adjacent path. Additional, specific distance ties are not provided.

The rebar was set in a computed position.

A BCS record of October 12, 1912 states "located from line tree 5.86 [chains] north of corner. Drove stake." The corner is also included in a metes and bounds description written out in the BCS Surveyor's Record, dated June 7, 1943. This description places the corner at 2648 feet south of the east quarter corner of section 9. The description also places the east quarter corner at 2649 feet east of the center of section. The east quarter corner (see documentation for corner NW 450-300) was established per a stone found in 1970. The center of section (NW 450-350) has not been excavated, though a nail at the county road intersection is believed to be set over the top of a railroad rail slanted over a stone, per BCS records of 1970. The distance between the east quarter corner and the nail believed to be marking the center of section agrees precisely with the 1943 distance, within uncertainties of significant digits.

No monumentation or evidence of the subject corner was found in the immediate vicinity of the expected position thereof. A well established, ancient fence was found to the north, beginning approximately 350 feet north of the corner. The subject corner was established at 2648.13 feet from the east quarter corner on a line prolonged from the east quarter corner south along the existing, ancient fence. Establishing the corner as such holds the best available evidence of the section line in the form of the fence, holds the distance from the 1943 description and honors the same approach to establishing the corner as the 1912 corner record. The precise distance of 2648.13 feet, rather than 2648.0, was borrowed from a survey by C. David Helton dated June 15, 1998 and recorded as instrument 9809245 in the Office of the Boone County Recorder. The position of the corner as defined by the fence prolonged to the south (i.e. the approach held to compute the position of this corner) falls approximately 1.7 feet west of the position of the corner held by Helton, as computed from remote points shown on that survey.

This corner was originally established as a wood post in May, 1829.



Kenneth E. Hedge
Kenneth E. Hedge, County Surveyor

James S. Swift
James S. Swift, IN LS 20200054
January 15, 2013

Washington Township

Center Township

Section 9 T19N, R1W	Section 10 T19N, R1W
Section 16 T19N, R1W	Section 15 T19N, R1W

SECTION CORNER RECORD

NW 400-400

BOONE COUNTY SURVEYOR'S OFFICE

State Plane grid coordinates NAD83 (2011):

North: 1766617.92 East: 3103604.40 (U.S. survey feet)

Type of monument: Harrison, 4" disk 'Section Corner'

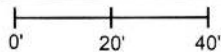
Depth: One inch below adjacent road surface

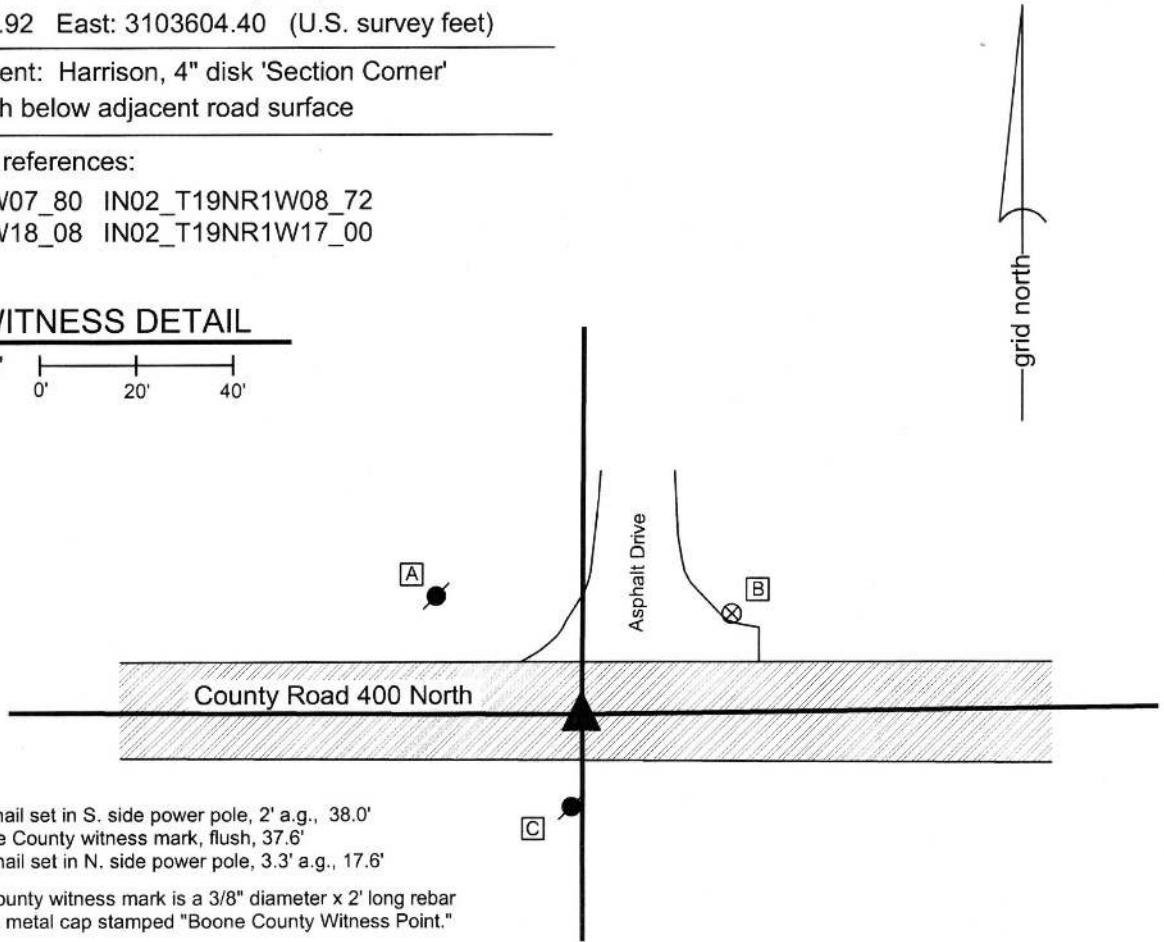
Indiana tie card references:

IN02_T19NR1W07_80 IN02_T19NR1W08_72

IN02_T19NR1W18_08 IN02_T19NR1W17_00

CORNER WITNESS DETAIL

SCALE 1" = 40' 



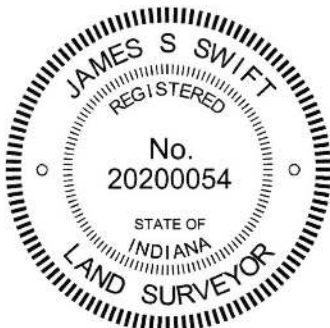
- A - Mag nail set in S. side power pole, 2' a.g., 38.0'
- B - Boone County witness mark, flush, 37.6'
- C - Mag nail set in N. side power pole, 3.3' a.g., 17.6'

Boone County witness mark is a 3/8" diameter x 2' long rebar bearing a metal cap stamped "Boone County Witness Point."

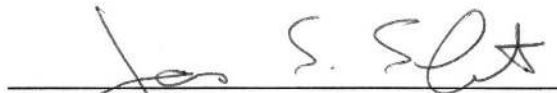
The Harrison monument was set in place of a vertical section of railroad rail found.

No specific descriptions of this corner were found in the BCS Surveyor's Record, though the corner is mentioned as the terminal point for measurements in records of 1837 and 1859. A BCS tie card dated March 14, 1970 states "no stone."

This corner was excavated on June 26, 2015. Prior to excavation, a Mag nail was found at the surface of the road. Excavation revealed a vertical section of railroad rail at 12 inches deep, slightly N.W. of the nail. Further excavation of an area extending 3 feet north, 2 feet south, 2.5 feet east and 2.5 feet west of the nail and rail revealed no further evidence of the corner. The bottom of the road bed was found at 16 to 18 inches deep. Excavation was performed to approximately 20 inches. Evidence of an old drainage tile was found at the east edge of the area of excavation, indicating some previous disruption to the ground in the vicinity of the corner. Numerous small rocks were found in the base layer of the road but none of them had the characteristics of a specifically set corner stone. Though the 1970 tie card made no mention of the railroad rail, a pencil notation put in the BCS Surveyor's record from the same date (3/14/1970) states "No stone - set railroad rail." The rail was held as marking the corner. The rail was removed during excavation and a Harrison monument was set in the position of the rail. The Mag nail had been 0.2 foot south and 0.2 foot east of this point. This corner was originally established as a wood post in 1829.




 Kenneth E. Hedge, County Surveyor


 James S. Swift, IN LS 20200054
 March 24, 2016

Washington Township

Section 8 T19N, R1W	Section 9 T19N, R1W
Section 17 T19N, R1W	Section 16 T19N, R1W