

SECTION CORNER RECORD

NE 300-200

BOONE COUNTY SURVEYOR'S OFFICE

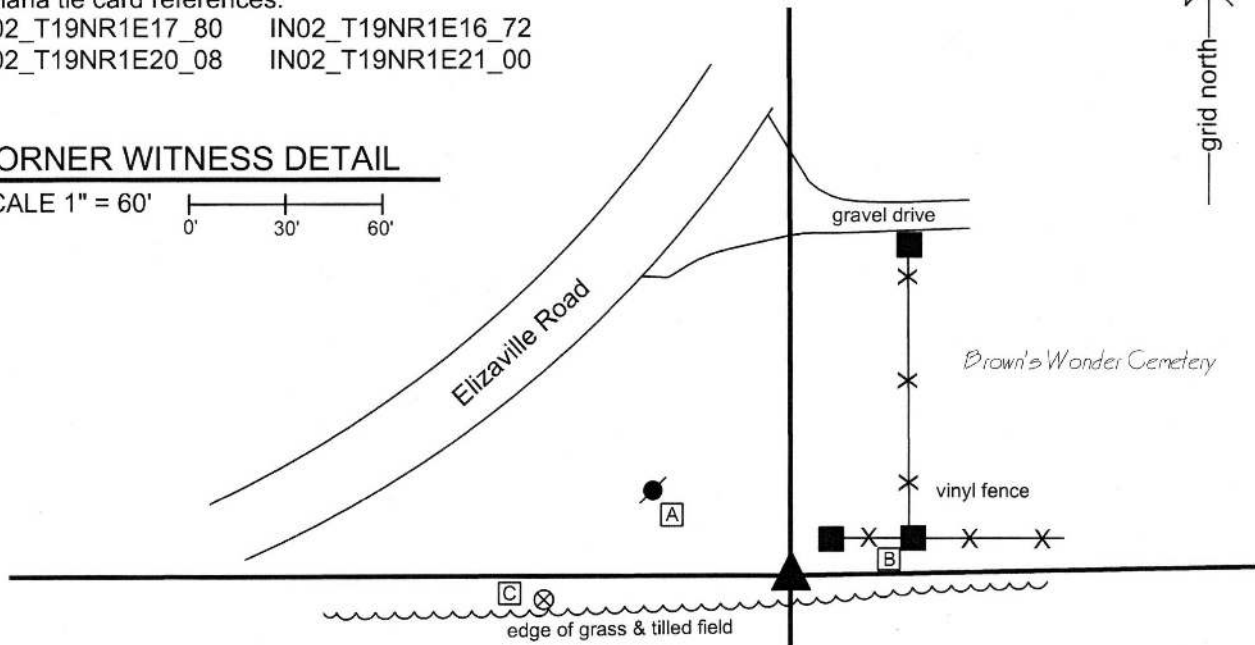
State Plane grid coordinates NAD83 (2011):
North: 1761494.82 East: 3135153.46 (U.S. survey feet)

Type of monument: Harrison, 4" disk 'Section Corner'
Depth: flush with adjacent ground

Indiana tie card references:
IN02_T19NR1E17_80 IN02_T19NR1E16_72
IN02_T19NR1E20_08 IN02_T19NR1E21_00

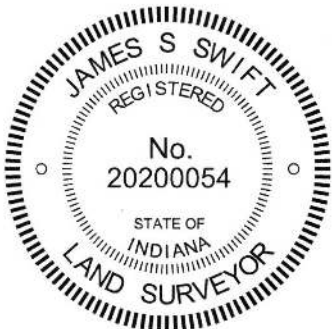
CORNER WITNESS DETAIL

SCALE 1" = 60'
0' 30' 60'



- A - Mag nail set in S.E. side power pole, 1' a.g., 48.3'
 - B - S.W. edge, vinyl wrapped fence post, flush, 38.4'
 - C - Boone County witness mark, flush, 77.9'
- Boone County witness mark is a 3/8" diameter x 2' long rebar bearing a metal cap stamped "Boone County Witness Point."

The Harrison monument was set in place of a vertical section of railroad rail found. No specific descriptions of this corner were found in the BCS Surveyors Record. A BCS tie card dated August 16, 1967 states "no stone." A BCS tie card dated July 28, 2005 shows the corner as a Harrison monument with no documentation of source. This corner was excavated on October 10, 2013. Prior to excavation a Harrison monument was found at 2 inches below the grade of the adjoining ground. Excavation revealed a vertical section of railroad rail found at 11 inches deep, directly below the Harrison. Further excavation of an area extending 4 feet in all cardinal directions from the found monuments revealed no further evidence of the corner. The clay layer below the top soil was found at 16 inches deep. Excavation was performed to a minimum depth of 18 inches. The rail and Harrison fit with local evidence in the form of aligning with the roadways to the north and west also being in line with the field division to the south. The two found monuments were accepted as representing the best available evidence of the corner. A new Harrison monument was set in place of the old Harrison and railroad rail. This corner was originally established as a wood post in 1822.



Kenneth E. Hedge
Kenneth E. Hedge, County Surveyor

James S. Swift
James S. Swift, IN LS 20200054
March 24, 2016

Center Township

Section 17 T19N, R1E	Section 16 T19N, R1E
Section 20 T19N, R1E	Section 21 T19N, R1E

SECTION CORNER RECORD

BOONE COUNTY SURVEYOR'S OFFICE

NE 300-250

State Plane grid coordinates NAD83 (CORS96):

North: 1761542.30 East: 3137774.25 (U.S. survey feet)

Type of monument: Harrison, 4" disk 'Section Corner'

Depth: six inches below adjacent gravel road surface

Indiana tie card references:

IN02_T19NR1E16_76

IN02_T19NR1E21_04

CORNER WITNESS DETAIL

SCALE 1" = 30'

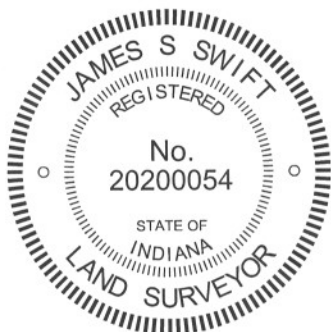
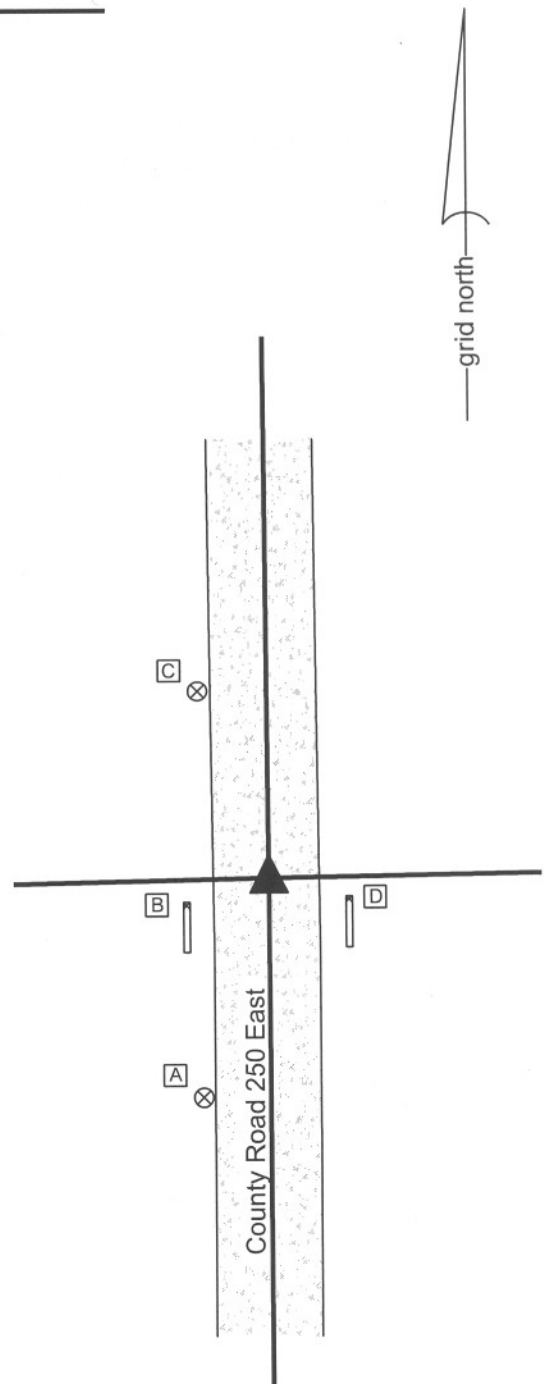
- A - Boone County witness mark, flush, 35.88'
- B - Chiseled "X" on concrete headwall, 13.59'
- D - Boone County witness mark, flush, 31.15'
- C - Chiseled "X" on concrete headwall, 12.97'

Boone County witness mark is a 3/8" diameter x 2' long rebar bearing a metal cap stamped "Boone County Witness Point."

The harrison monument was set in place of a vertical section of railroad rail found. No specific descriptions of this corner were found in the BCS Surveyor's Record. A BCS tie card dated May, 1970 states "No Stone, Set Rail." A BCS tie card dated August 19, 2005 shows the corner as a steel rail.

This corner was excavated on June 19, 2012. Prior to excavation a railroad rail was found at 4 inches deep in the center of the gravel road. The position of the rail fits with the 2005 distance ties. Excavation of an area extending 5 feet north, 3 feet south, 4 feet east and 4 feet west of the rail revealed no further evidence of the corner. It is noted that a drainage culvert lies immediately south of the corner. This area may have been low and occasionally muddy as a wagon road, prior to the installation of the culvert. A stone or other specific evidence of the corner may have been removed due to the possible low, muddy quality of the road or such evidence may have been removed in conjunction with the installation of the culvert. Given the lack of detail in the BCS Surveyor's record, it is also reasonable to conclude that a stone may never have been present at this corner.

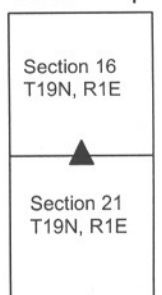
The 1970 tie card shows the rail as being set at the midpoint between posts on either side of the road. The posts are no longer present, but the rail remains as the best available evidence of the corner and was held as marking it. The rail was removed during excavation and was replaced with a harrison monument in the same position. This corner was originally established as a wood post in June, 1821.



Kenneth E. Hedge
 Kenneth E. Hedge, County Surveyor

James S. Swift
 James S. Swift, IN LS 20200054
 January 15, 2013

Center Twp



SECTION CORNER RECORD

BOONE COUNTY SURVEYOR'S OFFICE

NE 300-300

State Plane grid coordinates NAD83 (CORS96):

North: 1761579.91 East: 3140427.34 (U.S. survey feet)

Type of monument: Harrison, 4" disk 'Section Corner'

Depth: six inches below adjacent gravel road surface

Indiana tie card references:

IN02_T19NR1E16_80 IN02_T19NR1E15_72

IN02_T19NR1E21_08 IN02_T19NR1E22_00

CORNER WITNESS DETAIL

SCALE 1" = 40'

- A - Mag nail set in S. side power pole, 2' a.g., 107.03'
- B - Mag nail set in E. side wood post, 2' a.g., 15.49'
- C - Boone County witness mark, flush, 27.78'
- D - Mag nail set in N. side power pole, 2' a.g., 132.76'

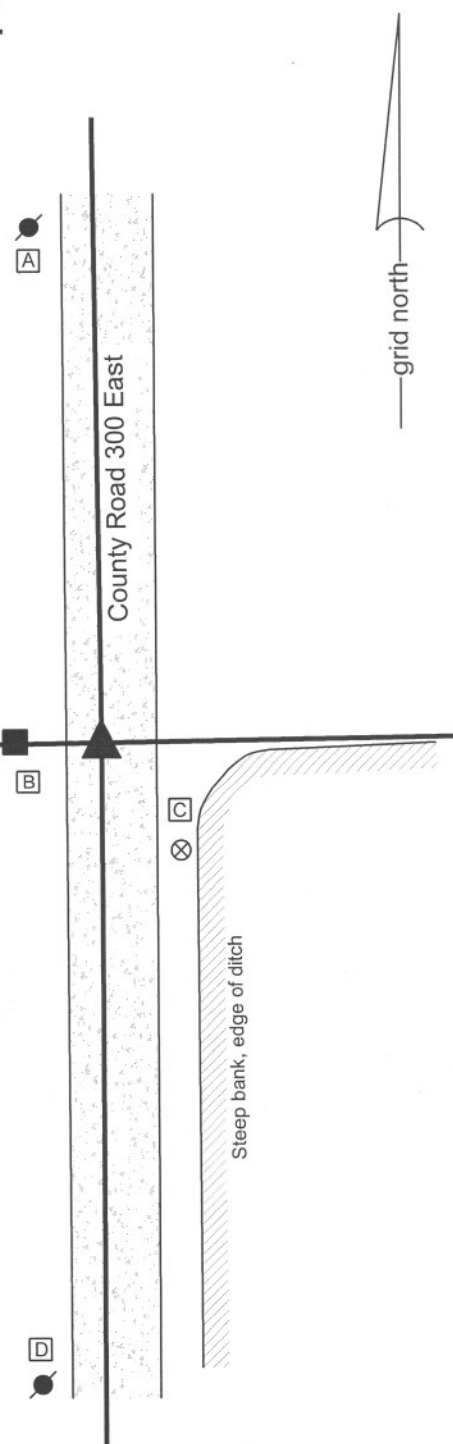
Boone County witness mark is a 3/8" diameter x 2' long rebar bearing a metal cap stamped "Boone County Witness Point."

The harrison monument was set in place of vertical section of railroad rail.

No specific descriptions of this corner were found in the BCS Surveyor's Record. A BCS tie card dated November, 1970 states "no stone." A BCS tie card dated July 27, 2005 shows the corner as a steel rail with no documentation of source.

This corner was excavated on March 10, 2011. Prior to excavation, a railroad rail was found at 4 inches deep. Excavation of an area extending 6 feet north, 4 feet east, 5 feet south and 6 feet west of the rail did not yield any further evidence of the corner. It is most likely that the rail was set in association with the 1970 tie card. The rail does fit with the local evidence of the corner, being located in the approximate center of the north-south county road and immediately east of an old wood end post on the west side of the road. The rail was accepted as the best available evidence of the corner. The rail was removed during excavation and replaced with a harrison monument in the same position.

This corner was originally established as a wood post in June, 1822.



Kenneth E. Hedge
 Kenneth E. Hedge, County Surveyor

James S. Swift
 James S. Swift, IN LS 20200054
 March 1, 2012

Center Township

Section 16 T19N, R1E	Section 15 T19N, R1E
Section 21 T19N, R1E	Section 22 T19N, R1E

SECTION CORNER RECORD

NE 350-300

BOONE COUNTY SURVEYOR'S OFFICE

State Plane grid coordinates NAD83 (CORS96):

North: 1764226.75 East: 3140395.35 (U.S. survey feet)

Type of monument: Harrison, 4" disk 'Section Corner'

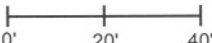
Depth: six inches below adjacent gravel road surface

Indiana tie card references:

IN02_T19NR1E15_36

IN02_T19NR1E16_44

CORNER WITNESS DETAIL

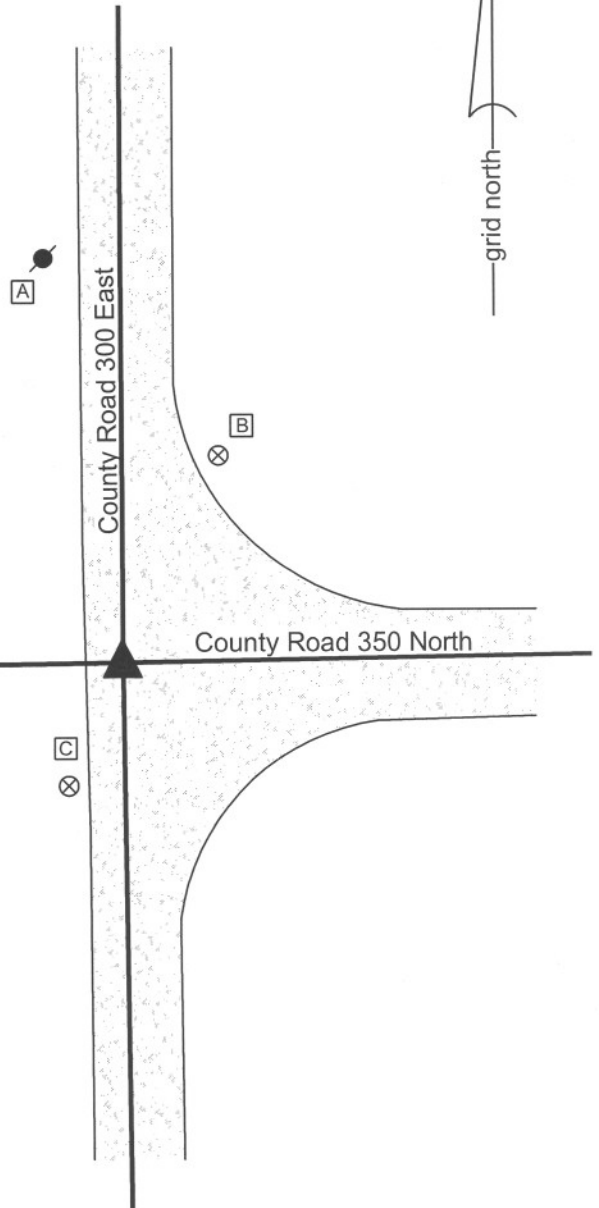
SCALE 1" = 40' 

A - Mag nail set in S. side power pole, 2' a.g., 89.38'

B - Boone County witness mark, flush, 47.60'

C - Boone County witness mark, flush, 28.06'

Boone County witness mark is a 3/8" diameter x 2' long rebar bearing a metal cap stamped "Boone County Witness Point."



The harrison monument was set in place of a stone found.

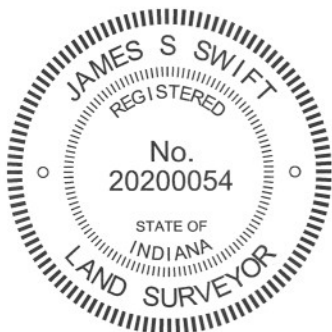
No specific descriptions of this corner were found in the BCS Surveyor's Record.

The corner is mentioned as the terminal point for measurements in records of 1851, 1852 and 1861. A BCS tie card dated November 1970 states "no stone." A BCS tie card dated July 27, 2005 shows the corner as a steel rail with no documentation of source.

This corner was excavated on March 17, 2011. Prior to excavation a vertical section of railroad rail was found at 3 inches deep. Excavation revealed a stone found at 4 inches deep. The stone measured 22 inches tall by 10 inches N-S by 8 inches E-W. The stone was embedded in the clay layer below the road, protruding 3 inches out of the clay layer into the bottom of the road bed. No specific markings were found on the stone. The stone was 1.2 feet east and 3.5 feet south of the rail. The stone fit better than the rail with local evidence in the form of the centers of the county roads, being closer to the westerly extension of the center of County Road 350 North.

It is most likely that the rail was set in association with the 1970 tie card. Clearly the statement "no stone" on that document was erroneous. Both the stone and the rail were removed. A harrison monument was set in the position of the top center point of the stone.

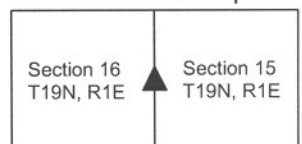
This corner was originally established as a wood post in June, 1822.




Kenneth E. Hedge, County Surveyor


James S. Swift, IN LS 20200054
March 1, 2012

Center Township



PHOTOGRAPHIC DOCUMENTATION

Date of photography: March 17, 2011

View of the stone from above and north.



View of the stone from above and south.



View of from the west, looking across the stone along east along County Road 350 North.



View from the south, looking across the stone and north along County Road 300 East.



For details and documentation, refer to related sheet "Section Corner Record."

SECTION CORNER RECORD

NE 400-200

BOONE COUNTY SURVEYOR'S OFFICE

State Plane grid coordinates NAD83 (2011):

North: 1766782.46 East: 3135113.83 (U.S. survey feet)

Type of monument: Harrison, 4" disk 'Section Corner'

Depth: Two inches above adjacent ground

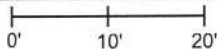
Indiana tie card references:

IN02_T19NR1E08_80 IN02_T19NR1E09_72

IN02_T19NR1E17_08 IN02_T19NR1E16_00

CORNER WITNESS DETAIL

SCALE 1" = 20'



orange plastic riser/breather for subterranean tile



An orange plastic perforated riser/breather for a subterranean tile is located 11.4 feet NNW of the monument. No other appropriate object are available to provide reliable distance ties.

The Harrison monument was set in place of a stone found.

A BCS record dated April 22, 1880 states, with respect to this corner, "Reestablished. Tree has fallen but is here and retains mark. Set rock 15.9.9 + on top."

A BCS tie card dated August 16, 2005 shows the corner as a Harrison monument with no documentation of source. The tie card shows the Harrison as being set between a post and a N-S fence.

On July 18, 2014 excavators working for Ramsey Farm Drainage contacted the Boone County Surveyor's Office with information that they had just discovered a Harrison monument (bare with no concrete) amidst the material which had just been excavated and that they had hit a substantial sized rock. They recognized the monument as a survey marker and questioned whether the found rock was a corner stone marking a survey corner. I, James Swift, PS, went to the scene where I confirmed that the iron monument was indeed a Harrison monument and that the found stone which was exposed on the top and along its west side did appear to be a corner stone. The stone was not positively confirmed to match the dimensions of the 1880 stone. The position of the stone was determined with GPS equipment and the excavators continued their work which included removing the stone and installing a subterranean tile. The found stone was accepted as providing the best evidence of the corner.

On October 27, 2017 the stone was replaced with a new Harrison monument, set in durable fashion, in the same position. As noted, the 2005 Harrison had already been removed from the ground when the excavators noticed it, hence the position of the monument is reported per the coordinates on the tie sheet, with approximately 0.3 foot uncertainty in all directions. Per those coordinates, the new Harrison, set in place of the stone, is 0.5 foot south and 1.6 feet east of the position of the previous Harrison. Though the fencing has been removed in the immediate vicinity of the corner, the new monument is approximately 0.5 foot east of the longer N-S fence, as it yet exists north and south of the corner. The previous Harrison had been approximately 1 foot west of the fence.

This corner was originally established as a wood post in 1822.




 Kenneth E. Hedge, County Surveyor


 James S. Swift, IN LS 20200054
 November 15, 2017

Clinton Township

Section 8
T19N, R1E

Section 9
T19N, R1E

Center Township

Section 17
T19N, R1E

Section 16
T19N, R1E

SECTION CORNER RECORD

NE 400-300

BOONE COUNTY SURVEYOR'S OFFICE

State Plane grid coordinates NAD83 (2011):
North: 1766872.77 East: 3140390.85 (U.S. survey feet)

Type of monument: Harrison, 4" disk 'Section Corner'
Depth: One inch below adjacent road surface

Indiana tie card references:
IN02_T19NR1E09_80 IN02_T19NR1E10_72
IN02_T19NR1E16_08 IN02_T19NR1E15_00

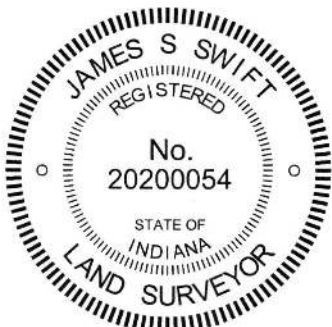
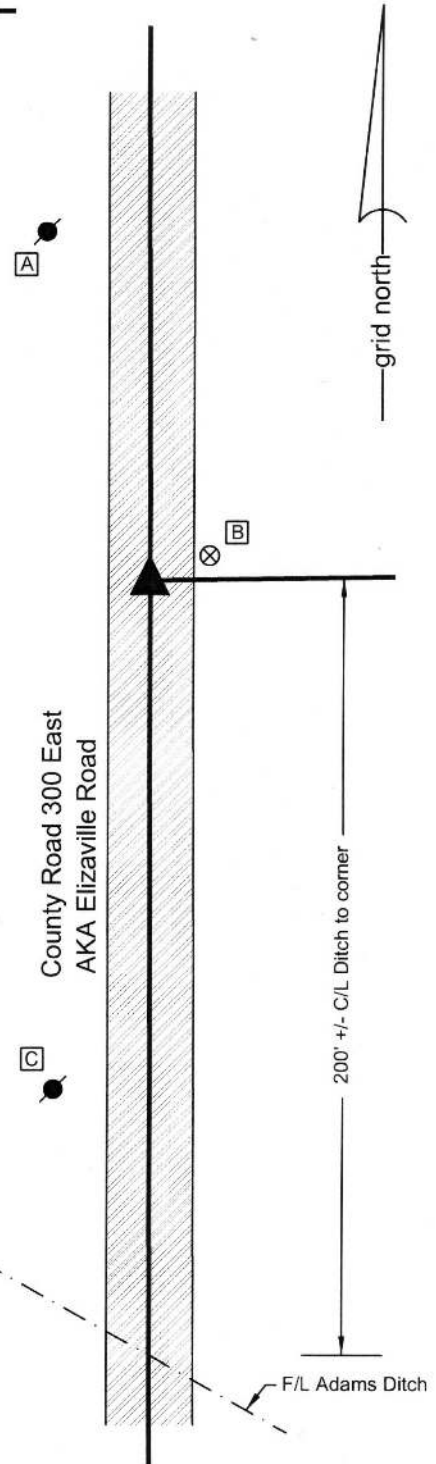
CORNER WITNESS DETAIL

SCALE 1" = 50'
0' 25' 50'

- A - Mag nail set in S.E. side power pole, 2' a.g., 92.7'
- B - Boone County witness mark, flush, 16.8'
- C - Mag nail set in N.E. side power pole, 2' a.g., 132.2'

Boone County witness mark is a 3/8" diameter x 2' long rebar bearing a metal cap stamped "Boone County Witness Point."

The Harrison monument was set at a calculated position.
No specific descriptions of this corner were found in the old BCS Surveyor's Record, nor were any recent BCS tie cards found referencing this corner. The corner is not shown as being monumented on private surveys recorded in the Boone County Recorder's Office. Also no evidence of the corner was found in the immediate vicinity of the corner except for the straight north-south roadway of County Road 300 East. This corner was excavated on October 16, 2013. No monuments were found prior to excavation. A calculated position for the corner was determined by extending the line of a fence providing evidence of the south line of the east half of the southwest quarter of section 10 west to the center of County Road 300 East, which point also fit with a position for the corner which was calculated by extending a line north from the east quarter corner of section 16 at double the distance from said quarter corner to the apparent southeast corner of the north half of the northeast quarter of section 16, as determined at the apparent intersection of the physical center of a straight E-W section of Elizaville Road with the physical center of County Road 300 East. Excavation of an area extending north 3 feet, south 3 feet, east 2 feet and west 2 feet yielded no evidence of the corner. The bottom of the road bed was found to be at 14 inches deep. Excavation extended to a minimum of 20 inches deep. A Harrison monument was set at the calculated position for the corner.



Kenneth E. Hedge
Kenneth E. Hedge, County Surveyor

James S. Swift
James S. Swift, IN LS 20200054
March 24, 2016

Clinton Township

Section 9 T19N, R1E	Section 10 T19N, R1E
------------------------	-------------------------

Center Township

Section 16 T19N, R1E	Section 15 T19N, R1E
-------------------------	-------------------------