

# SECTION CORNER RECORD

# SE 200-800

## BOONE COUNTY SURVEYOR'S OFFICE

State Plane grid coordinates NAD83 (NSRS 2007):

North: 1736025.67 East: 3167202.92 (U.S. survey feet)

Type of monument: Harrison, 4" disk 'Section Corner'

Depth: flush with adjacent road surface

Indiana tie card references:

IN02\_T18NR2E08\_80

IN02\_T18NR2E09\_72

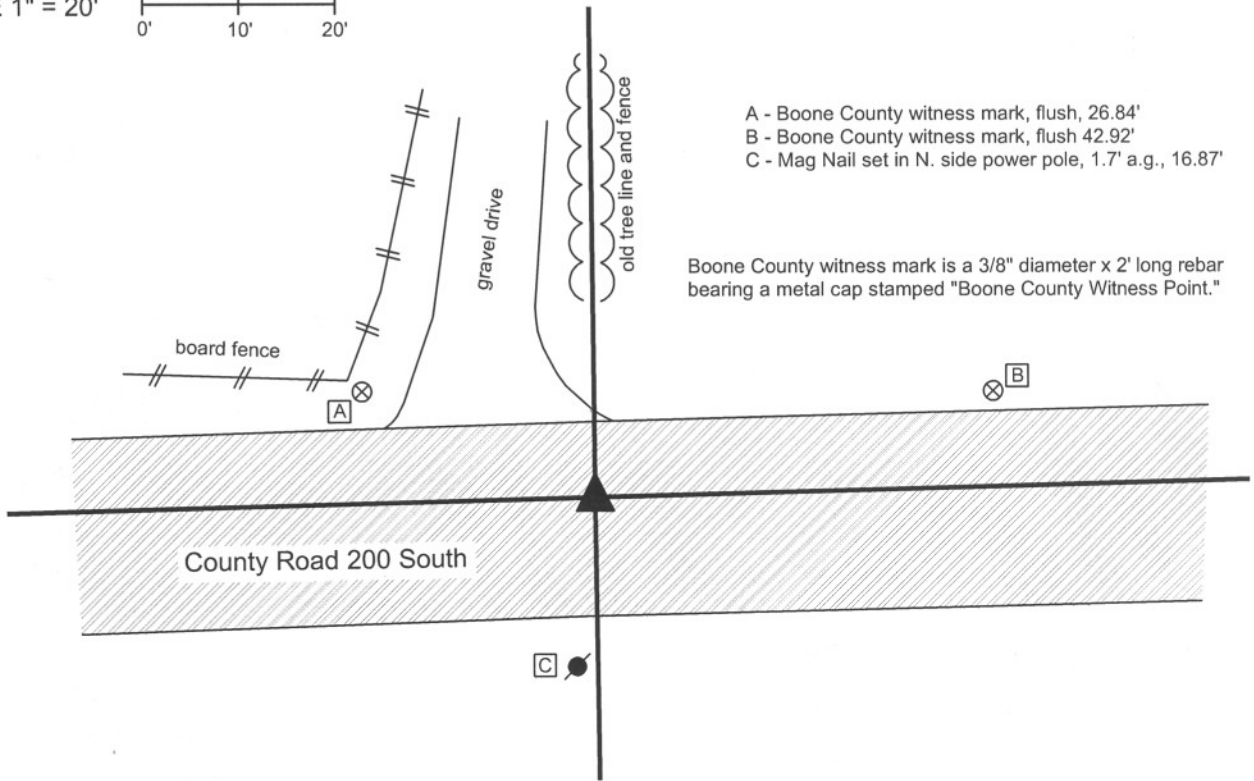
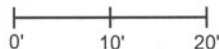
IN02\_T18NR2E16\_00

IN02\_T18NR2E17\_08



### CORNER WITNESS DETAIL

SCALE 1" = 20'



The harrison monument was set in place of a 1/2 inch rebar found.

A BCS tie card dated June 5, 1991 calls for a 1/2 inch rebar found, 0.3 foot below grade, approximately 2 feet north of the center of County Road 200 South and in line with the fences to the north and south. No other BCS records were found for this corner beyond the original establishment of the corner by federal surveyors. This corner was excavated on April 7, 2008. Prior to excavation, the 1/2 inch rebar was visible in hole in the asphalt, 9 inches below grade, in line with the fence line to the north. The fence to the south is no longer present. The rebar was removed and no other monuments were found during excavation. The area of excavation was 4 feet east-west, centered on the rebar and 5 1/2 feet north-south, extended 2 feet north and 3 1/2 feet south of the rebar, excavated to a depth of 18 inches. The clay layer begins at 12 inches. The harrison was set in the position of the rebar, flush with the adjacent road. This corner was originally established as a wood post in July, 1821.



*Kenneth E. Hedge*  
Kenneth E. Hedge, County Surveyor

*James S. Swift*  
James S. Swift, IN LS 20200054

March 11, 2009

Worth Township      Union Township

Section 8 T18N, R2E	Section 9 T18N, R2E
Section 17 T18N, R2E	Section 16 T18N, R2E

# SECTION CORNER RECORD

## BOONE COUNTY SURVEYOR'S OFFICE

SE 200-850

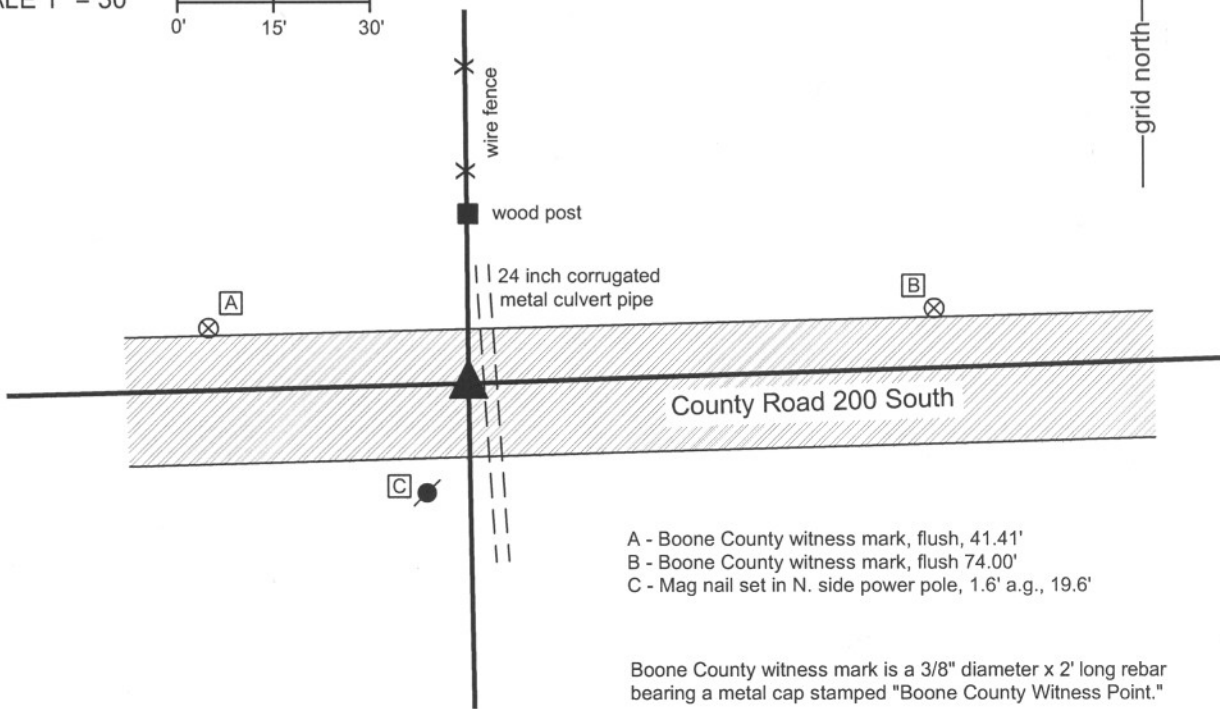
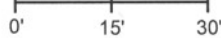
State Plane grid coordinates NAD83 (NSRS 2007):  
 North: 1736092.90 East: 3169879.18 (U.S. survey feet)

Type of monument: Harrison, 4" disk 'Section Corner'  
 Depth: Flush with road surface

Indiana tie card references:  
 IN02\_T18NR2E09\_76  
 IN02\_T18NR2E16\_04

### CORNER WITNESS DETAIL

SCALE 1" = 30'



The harrison monument was set in place of a 1/2 inch rebar found.  
 No BCS stone records or tie cards are known to exist for this corner. The origin of the rebar is not known. It was found in the approximate center of County Road 200 South in line with an old fence to the north, 8 inches below the grade of the adjacent surface. The rebar fits generally well with proximate corners and represents the commonly held monument for private surveys in this vicinity. Due to the fact that this corner falls in fill and is adjacent to a large culvert pipe, it is not likely that a corner stone would be found. Any corner stone which may have existed was likely removed during the installation of the culvert, hence substantial exploratory excavation was not performed. The rebar was removed and the harrison was set flush with the road surface at the position of the rebar on May 12, 2008.  
 This corner was originally established as a wood post in July, 1821.



*Kenneth E. Hedge*  
 Kenneth E. Hedge, County Surveyor

*James S. Swift*  
 James S. Swift, IN LS 20200054

March 11, 2009

Union Township



# SECTION CORNER RECORD

SE 200-900

## BOONE COUNTY SURVEYOR'S OFFICE

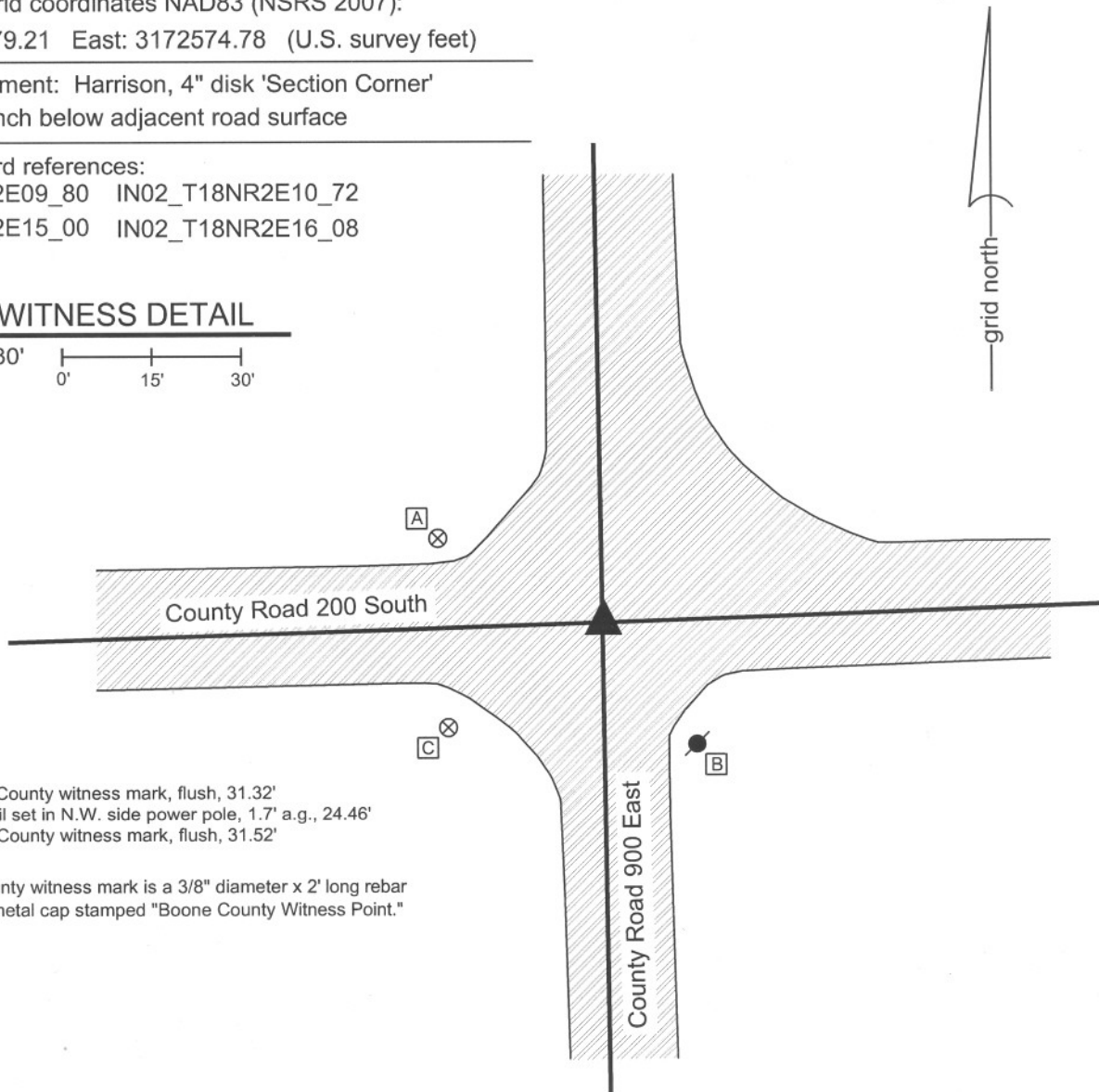
State Plane grid coordinates NAD83 (NSRS 2007):  
North: 1736179.21 East: 3172574.78 (U.S. survey feet)

Type of monument: Harrison, 4" disk 'Section Corner'  
Depth: One inch below adjacent road surface

Indiana tie card references:  
IN02\_T18NR2E09\_80 IN02\_T18NR2E10\_72  
IN02\_T18NR2E15\_00 IN02\_T18NR2E16\_08

### CORNER WITNESS DETAIL

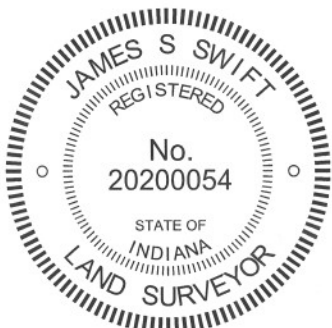
SCALE 1" = 30'  
0' 15' 30'



- A - Boone County witness mark, flush, 31.32'
- B - Mag nail set in N.W. side power pole, 1.7' a.g., 24.46'
- C - Boone County witness mark, flush, 31.52'

Boone County witness mark is a 3/8" diameter x 2' long rebar bearing a metal cap stamped "Boone County Witness Point."

The harrison monument was set in place of a railroad rail found. A BCS record on October 24, 1892 states "found both corner rocks + wit." (No record was found for any known corner stones prior to 1892). A BCS tie card dated October 11, 1968 states "no stone." This corner was excavated on June 2, 2008. Prior to excavation, a mag nail was visible at the surface. Excavation yielded a 5/8 inch rebar with a metal cap at 7 inches. Further excavation yielded a railroad rail at 9 inches. The rebar was situated against the south side of the rail. Both monuments were below and slightly north of the mag nail. Further excavation of an area 4.5 feet N-S by 8 feet E-W extending 4.5 feet west and 2.5 feet north of the rail yielded no more monuments. The record stone was not found. The harrison was set in the position of the railroad rail (removed during excavation), 0.14 of a foot north of the position of the mag nail (also removed during excavation). This corner was originally established as wood post in July, 1821.



*Kenneth E. Hedge*  
Kenneth E. Hedge, County Surveyor

*James S. Swift*  
James S. Swift, IN LS 20200054  
March 18, 2009, Revised April 30, 2012

Union Township

Section 9 T18N, R2E	Section 10 T18N, R2E
Section 16 T18N, R2E	Section 15 T18N, R2E

# SECTION CORNER RECORD

SE 250-800

## BOONE COUNTY SURVEYOR'S OFFICE

State Plane grid coordinates NAD83 (NSRS 2007):

North: 1733393.08 East: 3167236.93 (U.S. survey feet)

Type of monument: Harrison, 4" disk 'Section Corner'

Depth: flush with adjacent road surface

Indiana tie card references:

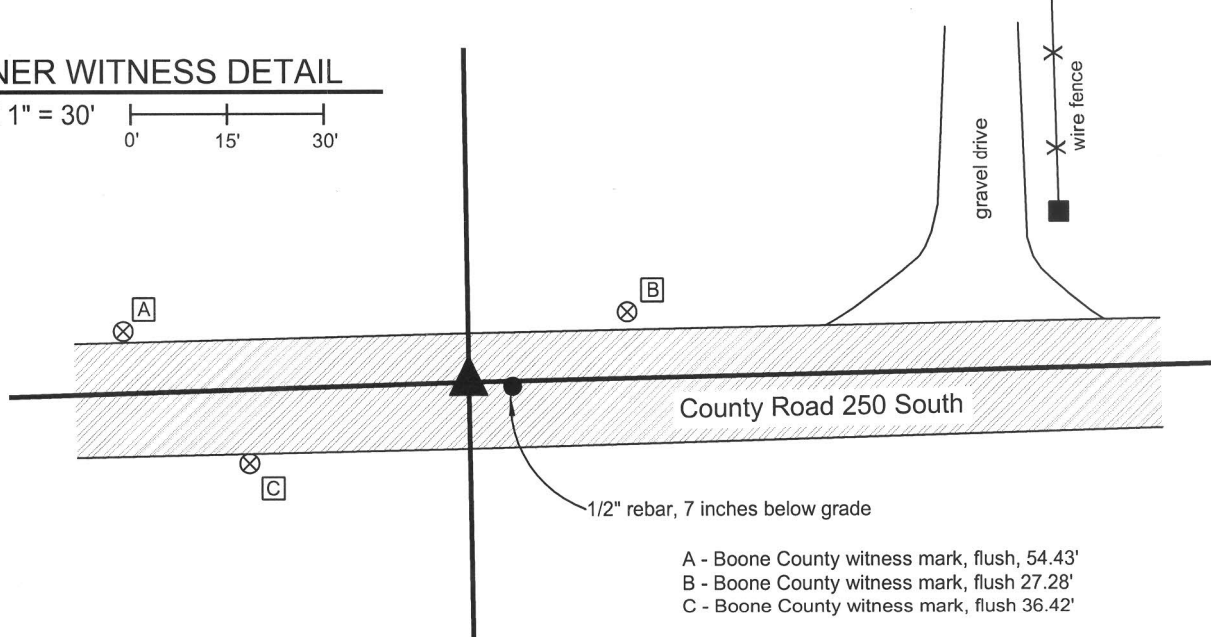
IN02\_T18NR2E16\_36

IN02\_T18NR2E17\_44



### CORNER WITNESS DETAIL

SCALE 1" = 30'  
0' 15' 30'



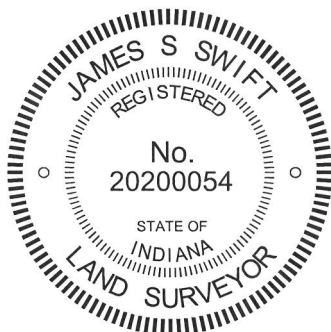
- A - Boone County witness mark, flush, 54.43'
- B - Boone County witness mark, flush 27.28'
- C - Boone County witness mark, flush 36.42'

Boone County witness mark is a 3/8" diameter x 2' long rebar bearing a metal cap stamped "Boone County Witness Point."

A BCS record dated April 10 and 11, 1856 states "Re-est. Set rock 11 by 16 in." A BCS tie card dated June 5, 1991 calls for a 1/2 inch rebar found. This corner was established in cooperation with Jonathon Hause, LS20600040 of Anderson & Associates, Lebanon, Indiana. Mr. Hause provided several surveys and associated field notes. The field notes associated with Anderson Job No. 880047, survey dated June 28, 1988, field notes not dated, survey not recorded, demonstrate information in the vicinity of the subject corner as "set pin" 6.5' E. of stone. No information is given as to why the pin was set east of the stone. Another non-recorded survey provided by Mr. Hause which was not an Anderson survey, but certified by James D. Melton, LS 10159, dated September 21, 1977 and revised October 14, 1977 calls for the stone found at the corner and shows local ties to the stone. Mr. Hause computed the location of the stone relative to other monuments called for on the Melton survey and found in the field. This position falls approximately 6.9 feet west of the 1/2" rebar, which is generally in agreement with the information from the 1988 Anderson survey. It is noted that by comparing the sketches of the corner on the Melton survey with the 1991 BCS tie card, it is evident that the rebar was east of the stone. All tie references from the Melton survey have been destroyed.

On January 24 and 28, 2008 this office excavated an area 4 feet N-S by 4 feet E-W centered on the computed position of the stone. The stone was not found. It was observed that the level of the road is close to the surrounding ground level and that the road bed is minimal gravel covered with chip and seal asphalt. Given the conditions of the road, it is likely that this stone was hit and displaced by a road grader.

The position of the stone computed by Mr. Hause was held as the best evidence of the original corner and a harrison monument was set at this position. The rebar was left in place. This corner was originally established as a wood post in July, 1821.



*Kenneth E. Hedge*  
Kenneth E. Hedge, County Surveyor

*James S. Swift*  
James S. Swift, IN LS 20200054

March 11, 2009, Revised January 23, 2013

Worth Township      Union Township

Section 17 T18N, R2E	Section 16 T18N, R2E
-------------------------	-------------------------

# SECTION CORNER RECORD

SE 250-900

## BOONE COUNTY SURVEYOR'S OFFICE

State Plane grid coordinates NAD83 (NSRS 2007):

North: 1733534.18 East: 3172613.24 (U.S. survey feet)

Type of monument: Harrison, 4" disk 'Section Corner'

Depth: three inches above adjacent ground

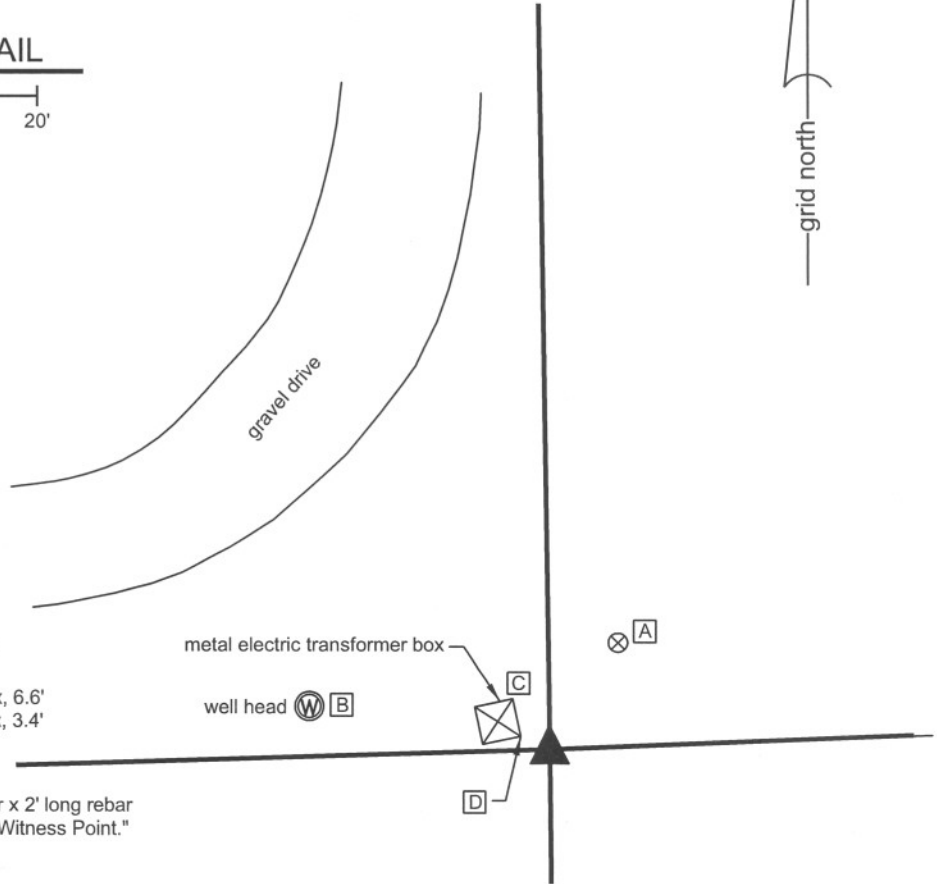
Indiana tie card references:

IN02\_T18NR2E15\_36

IN02\_T18NR2E16\_44

### CORNER WITNESS DETAIL

SCALE 1" = 20'



- A - Boone County witness mark, flush, 13.15'
- B - Top center, well head, 25.5'
- C - N.E. corner, base, electric transformer box, 6.6'
- D - S.E. corner, base, electric transformer box, 3.4'

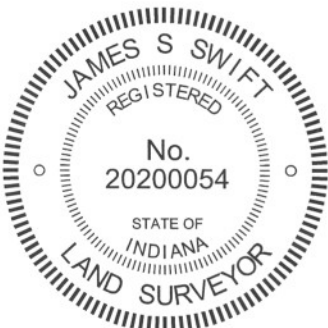
Boone County witness mark is a 3/8" diameter x 2' long rebar bearing a metal cap stamped "Boone County Witness Point."

The harrison monument was set in place of a rebar found bearing the cap "Carl Anderson, Prof. Engr."

A BCS record of May 10, 1883 discusses the corner but does not call for a specific monument at the corner. A witness stone described in the record was not found. A BCS record of October 24, 1892 states "Found rock at corner."

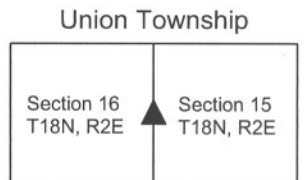
The capped rebar was found adjacent to the remnants of an ancient wood corner post. Numerous rocks were found in the immediate vicinity of the corner but none were specifically identifiable as corner stones. The rebar has been held as the corner for private surveys, including that of adjacent properties. The rebar was removed and the adjacent rocks displaced. A harrison monument was set in place of the capped rebar.

This corner was originally established as a wood post in 1821.



*Kenneth E. Hedge*  
Kenneth E. Hedge, County Surveyor

*James S. Swift*  
James S. Swift, IN LS 20200054  
July 25, 2011



# SECTION CORNER RECORD

SE 300-800

## BOONE COUNTY SURVEYOR'S OFFICE

State Plane grid coordinates NAD83 (NSRS 2007):

North: 1730761.50 East: 3167275.08 (U.S. survey feet)

Type of monument: Harrison, 4" disk 'Section Corner'

Depth: One inch below adjacent road surface

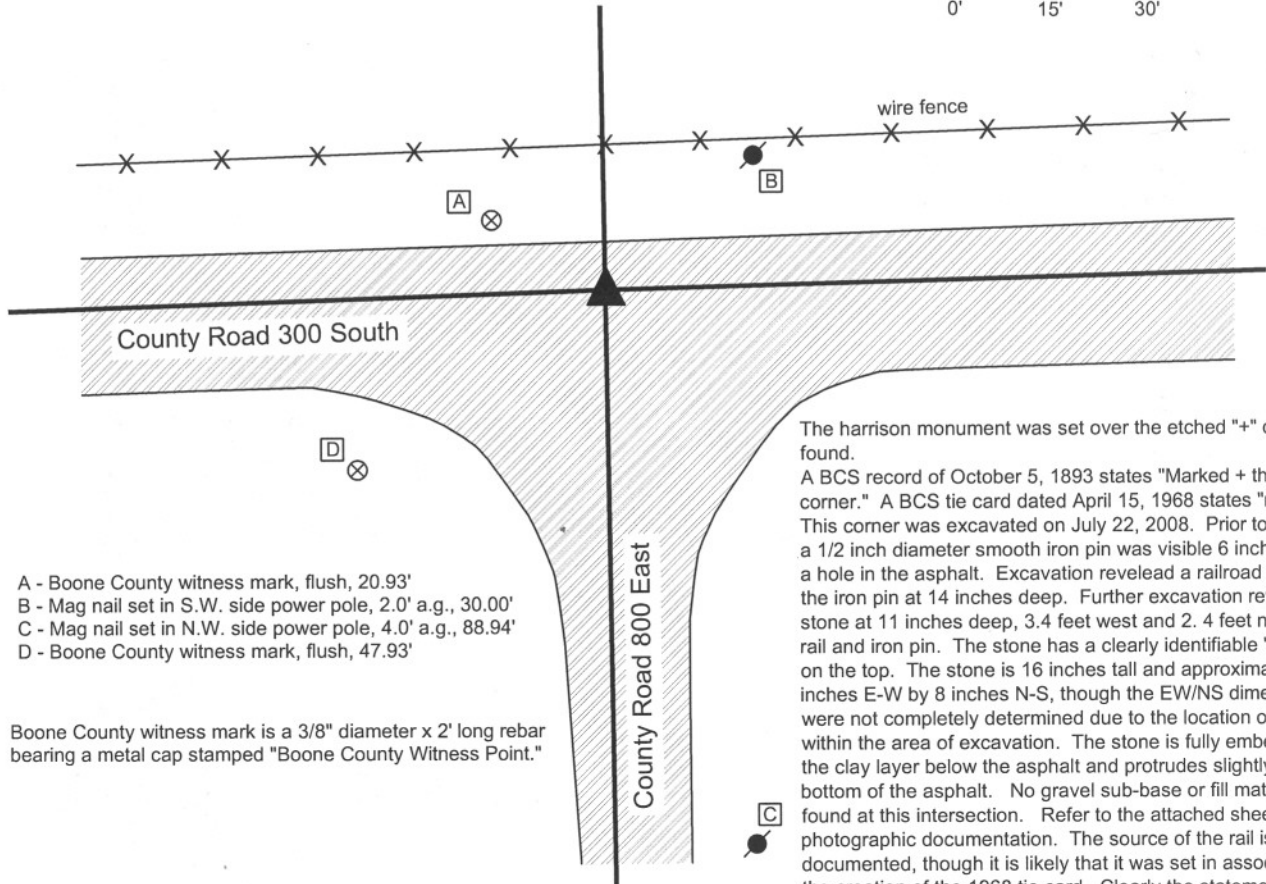
Indiana tie card references:

IN02\_T18NR2E16\_72 IN02\_T18NR2E17\_80

IN02\_T18NR2E21\_00 IN02\_T18NR2E20\_08

### CORNER WITNESS DETAIL

SCALE 1" = 30'



- A - Boone County witness mark, flush, 20.93'
- B - Mag nail set in S.W. side power pole, 2.0' a.g., 30.00'
- C - Mag nail set in N.W. side power pole, 4.0' a.g., 88.94'
- D - Boone County witness mark, flush, 47.93'

Boone County witness mark is a 3/8" diameter x 2' long rebar bearing a metal cap stamped "Boone County Witness Point."

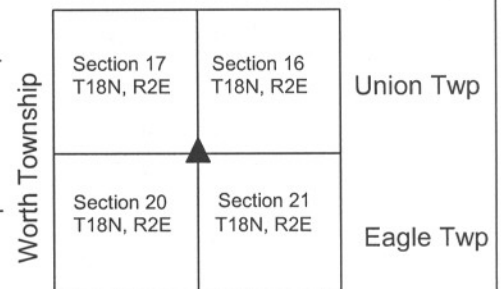
The harrison monument was set over the etched "+" on a stone found. A BCS record of October 5, 1893 states "Marked + the rock at corner." A BCS tie card dated April 15, 1968 states "no stone." This corner was excavated on July 22, 2008. Prior to excavation a 1/2 inch diameter smooth iron pin was visible 6 inches deep in a hole in the asphalt. Excavation revealed a railroad rail below the iron pin at 14 inches deep. Further excavation revealed a stone at 11 inches deep, 3.4 feet west and 2.4 feet north of the rail and iron pin. The stone has a clearly identifiable "+" etched on the top. The stone is 16 inches tall and approximately 8 inches E-W by 8 inches N-S, though the EW/NS dimensions were not completely determined due to the location of the stone within the area of excavation. The stone is fully embedded in the clay layer below the asphalt and protrudes slightly into the bottom of the asphalt. No gravel sub-base or fill material was found at this intersection. Refer to the attached sheet for photographic documentation. The source of the rail is not documented, though it is likely that it was set in association with the creation of the 1968 tie card. Clearly the statement of "no stone" on that tie card is erroneous. The statement of "marked + the rock at corner" on the 1893 tie card indicates that the rock was present prior to this and marked at that time. The marking, vertical orientation, the placement embedded in the clay and the lack of other similar object in the intersection leave minimal uncertainty as to whether this is the old corner stone, hence best available evidence of the original location of the corner. The harrison monument was set over the etched "+" on the stone. This corner was originally established in July, 1821.



*Kenneth E. Hedge*  
Kenneth E. Hedge, County Surveyor

*James S. Swift*  
James S. Swift, IN LS 20200054

March 11, 2009



PHOTOGRAPHIC DOCUMENTATION

Date of photography: July 22, 2008

Corner stone - view of south half of stone, exposed in corner of hole, from southeast.



View from East, looking across south half of stone along County Road 300 South.



Corner stone - overhead view from south, showing top of stone after hole was refilled and a new area cut out above stone.



Same view as to left, with chiseled "+" on the top of the stone enhanced for ease of visual detection.



# SECTION CORNER RECORD

SE 300-850

## BOONE COUNTY SURVEYOR'S OFFICE

State Plane grid coordinates NAD83 (NSRS 2007):

North: 1730829.70 East: 3169965.14 (U.S. survey feet)

Type of monument: Harrison, 4" disk 'Section Corner'

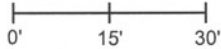
Depth: One inch below adjacent road surface

Indiana tie card references:

IN02\_T18NR2E16\_76 IN02\_T18NR2E21\_04

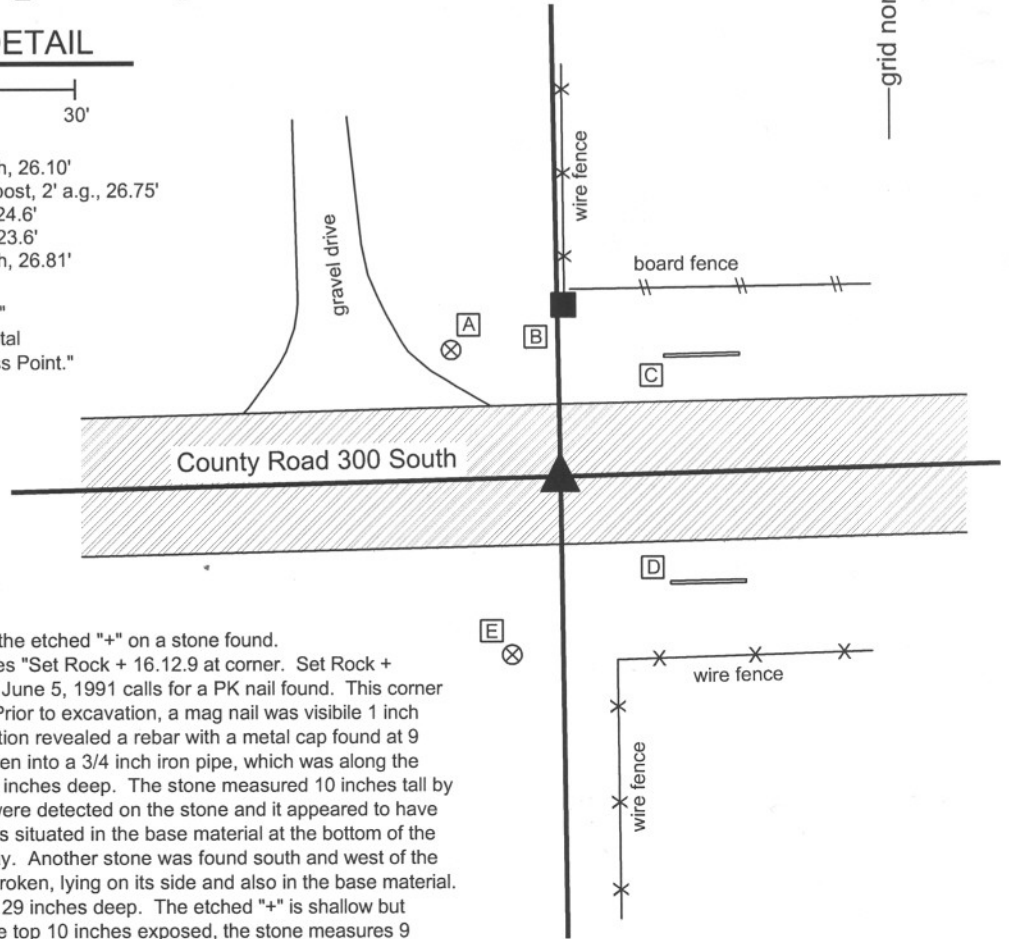
### CORNER WITNESS DETAIL

SCALE 1" = 30'



- A - Boone County witness mark, flush, 26.10'
- B - Mag nail set in South side wood post, 2' a.g., 26.75'
- C - S.W. corner, concrete headwall, 24.6'
- D - N.W. corner, concrete headwall, 23.6'
- E - Boone County witness mark, flush, 26.81'

Boone County witness mark is a 3/8" diameter x 2' long rebar bearing a metal cap stamped "Boone County Witness Point."



The harrison monument was set over the etched "+" on a stone found. A BCS record of October 5, 1893 states "Set Rock + 16.12.9 at corner. Set Rock + 7.12.14 under." A BCS tie card dated June 5, 1991 calls for a PK nail found. This corner was excavated on August 11, 2008. Prior to excavation, a mag nail was visible 1 inch below the surrounding grade. Excavation revealed a rebar with a metal cap found at 9 inches deep. The rebar had been driven into a 3/4 inch iron pipe, which was along the northwest edge of a stone found at 14 inches deep. The stone measured 10 inches tall by 11 inches by 7 inches. No markings were detected on the stone and it appeared to have been broken at the top. The stone was situated in the base material at the bottom of the road and was not embedded in the clay. Another stone was found south and west of the first stone and pipe. This stone was broken, lying on its side and also in the base material. The record stone was found below, at 29 inches deep. The etched "+" is shallow but clearly discernable on the top. With the top 10 inches exposed, the stone measures 9 inches E-W by 10 inches N-S and getting larger in the N-S dimensions. The top of the stone is at the top of the clay layer below the road. Hence, the entire stone is embedded in the clay. The harrison monument was set directly over the etched "+" on the top of the stone. The mag nail had been 1.2 feet North and 0.6 foot East of the etched "+." This corner was originally established as a wood post in July, 1821.



*Kenneth E. Hedge*  
 Kenneth E. Hedge, County Surveyor

*James S. Swift*  
 James S. Swift, IN LS 20200054

March 11, 2009

Union Township

Section 16  
T18N, R2E

Eagle Township

Section 21  
T18N, R2E



PHOTOGRAPHIC DOCUMENTATION

Date of photography: August 11, 2008

Iron pipe, into which rebar was driven.



Stone against which the iron pipe was situated. Stone is in road sub-base, not clay.



Thin stone found.



Thin stone shifted to side, revealing top of record corner stone.



Record corner stone, overhead view.



Same picture as to left, with the vague but discernable etched "+" enhanced.



For details and documentation, refer to related sheet "Section Corner Record."

# SECTION CORNER RECORD

SE 300-900

## BOONE COUNTY SURVEYOR'S OFFICE

State Plane grid coordinates NAD83 (NSRS 2007):  
 North: 1730903.33 East: 3172645.31 (U.S. survey feet)

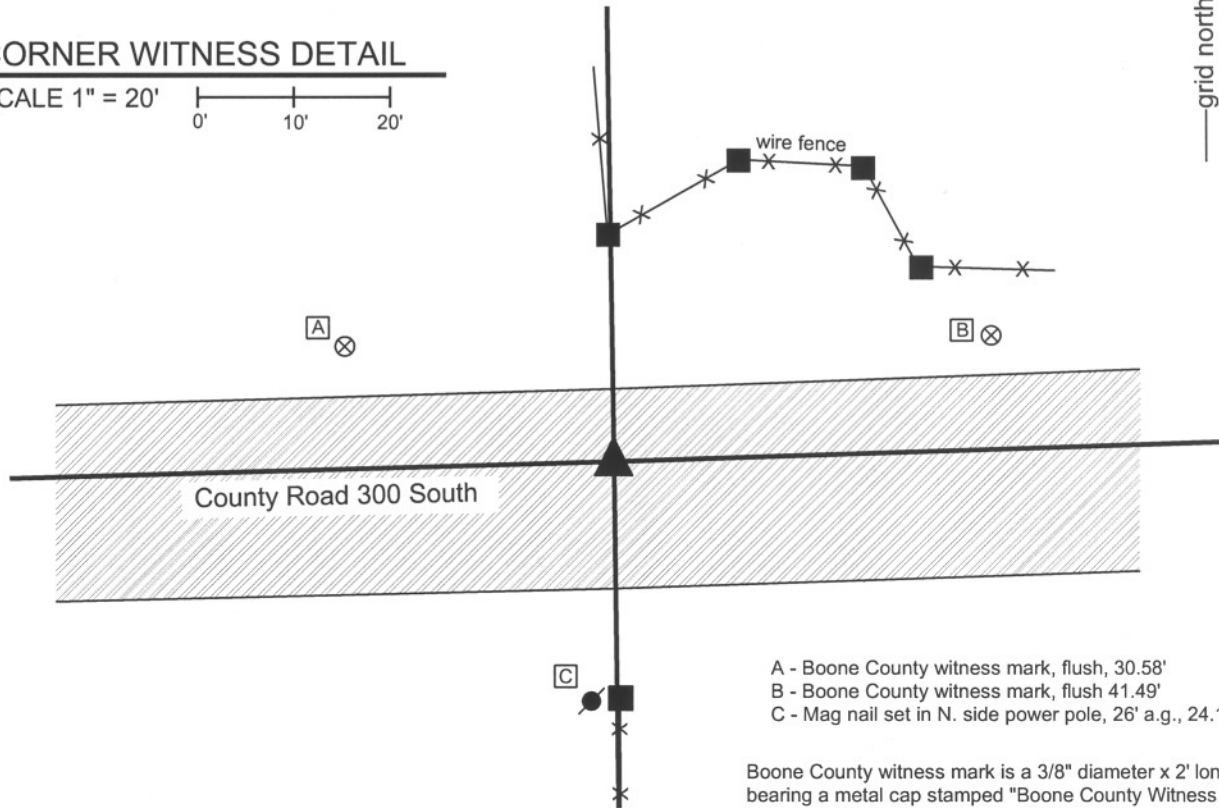
Type of monument: Harrison, 4" disk 'Section Corner'  
 Depth: One inch below adjacent road surface

Indiana tie card references:  
 IN02\_T18NR2E15\_72      IN02\_T18NR2E16\_80  
 IN02\_T18NR2E21\_08      IN02\_T18NR2E22\_00



### CORNER WITNESS DETAIL

SCALE 1" = 20'  
 0'      10'      20'



- A - Boone County witness mark, flush, 30.58'
- B - Boone County witness mark, flush 41.49'
- C - Mag nail set in N. side power pole, 26' a.g., 24.1'

Boone County witness mark is a 3/8" diameter x 2' long rebar bearing a metal cap stamped "Boone County Witness Point."

The harrison monument was set in place of a mag nail found.

A BCS record of August 13-14, 1866 states "Reestablished. Set a Rock 12.8 by 8 in marked +. One under it 8.5 by 3 in marked + on top." No BCS tie cards were found for this corner. Excavation for this corner occurred on August 11, 2008. Prior to excavation a mag nail was visible 3 inches deep in a hole in the asphalt. Excavation revealed another, smaller nail directly below the mag. Excavation also revealed modern sub-base material below the asphalt. This appears to be an area of slight cut and it is considered most likely that the stone was removed during the previous construction. The two nails were located slightly north of the center of the road in line with the old corner post to the north and at the northerly prolongation of the old fence to the south. The harrison monument was set in the position of the nails. The area of excavation was 5 feet E-W by 6.5 feet N-S, centered on the nail E-W and extending to 4.5 feet south of the nail.

This corner was originally established as a wood post in July, 1821.



*Kenneth E. Hedge*  
 Kenneth E. Hedge, County Surveyor

Eagle Twp

*James S. Swift*  
 James S. Swift, IN LS 20200054

Union Twp

March 18, 2009

Section 16 T18N, R2E	Section 15 T18N, R2E
Section 21 T18N, R2E	Section 22 T18N, R2E