

SECTION CORNER RECORD

SW 250-300

BOONE COUNTY SURVEYOR'S OFFICE

State Plane grid coordinates NAD83 (2011):

North: 1732187.17 East: 3108988.35 (U.S. survey feet)

Type of monument: 5/8" Rebar with metal cap

Depth: Fourteen inches below adjacent ground

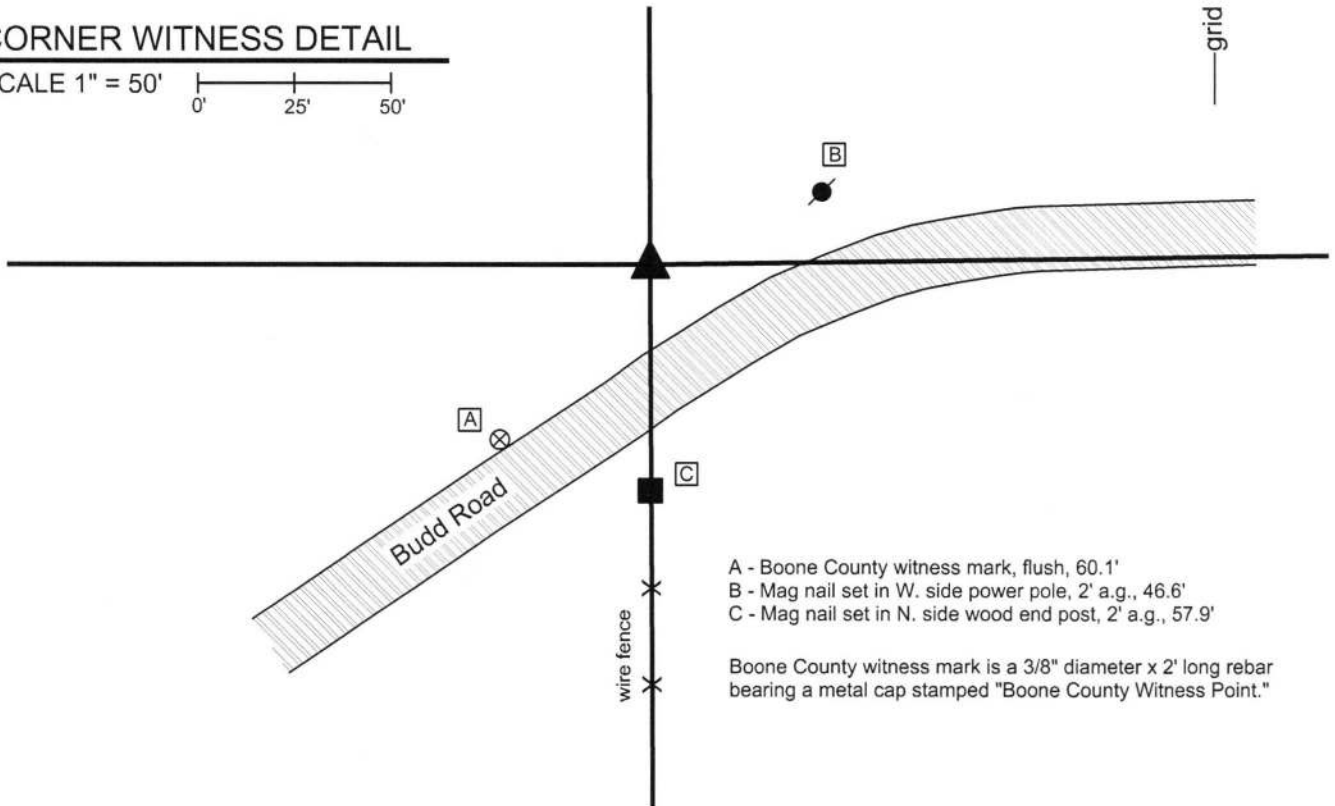
Indiana tie card references:

IN02_T18NR1W16_44 IN02_T18R1W15_36



CORNER WITNESS DETAIL

SCALE 1" = 50'



- A - Boone County witness mark, flush, 60.1'
- B - Mag nail set in W. side power pole, 2' a.g., 46.6'
- C - Mag nail set in N. side wood end post, 2' a.g., 57.9'

Boone County witness mark is a 3/8" diameter x 2' long rebar bearing a metal cap stamped "Boone County Witness Point."

The rebar was set at a calculated position.

A BCS record of August 8, 1882 states, with respect to this corner, "Reest by measurement from C and d in Sec. 16. Rock 20.18.18 + on top." No recent BCS tie cards were found referencing this corner.

No metal or other artificial monuments were found marking the corner. A probable position for the corner was computed by creating a theoretical intersection point of the prolongations of fences to the east and south. The fence to south exists between the corner approximately one-half mile south and an end post on the south side of Budd Road, 60 feet south of the subject corner. The fence to the east exists between the corner approximately one-half mile east of the subject corner and an end post approximately one-quarter mile east of the subject corner. The standing fence is considered more reliable evidence of the east-west section line than the short east-west section of Budd Road. Extensive probing and manual excavation in the vicinity of the probable position yielded no further evidence of the corner. The stone referenced in the 1882 record was not found. The probable position for the corner was held, based on the best available physical evidence of the relevant section lines. A 30 inch length of 5/8 inch diameter rebar was set at this position, buried 14 inches deep in a tilled field.

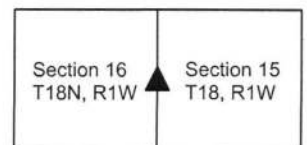
This corner was originally established as a wood post in 1820.



Kenneth E. Hedge
Kenneth E. Hedge, County Surveyor

James S. Swift
James S. Swift, IN LS 20200054
March 23, 2017

Center Township



SECTION CORNER RECORD

SW 300-300

BOONE COUNTY SURVEYOR'S OFFICE

State Plane grid coordinates NAD83 (2011):

North: 1729546.06 East: 3109001.84 (U.S. survey feet)

Type of monument: Harrison, 4" disk 'Section Corner'

Depth: Four inches above adjacent grade

Indiana tie card references:

IN02_T18NR1W16_80 IN02_T18NR1W15_72

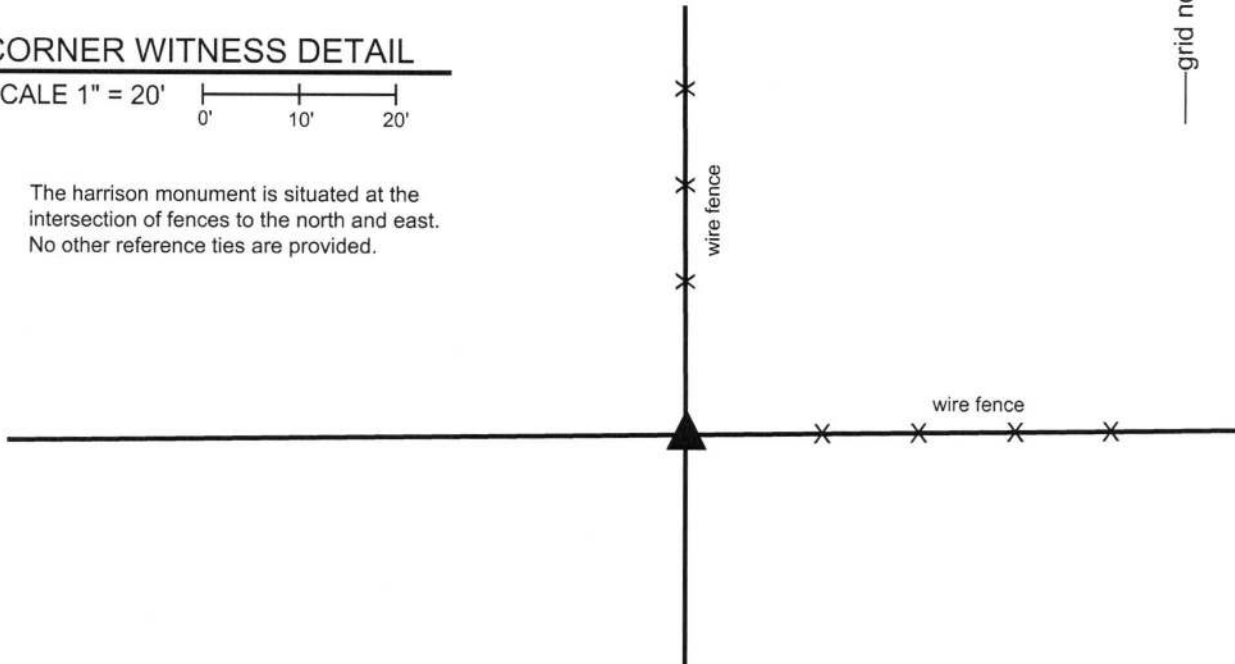
IN02_T18NR1W21_08 IN02_T18NR1W22_00



CORNER WITNESS DETAIL

SCALE 1" = 20'

The Harrison monument is situated at the intersection of fences to the north and east. No other reference ties are provided.



The Harrison monument was set in place of a wood corner post found.

No specific descriptions of this corner were found in the BCS Surveyor's Record nor were any recent BCS tie cards found referencing this corner.

Substantial local evidence of the corner was found in September, 2016 in the form of an ancient wood corner post at the intersection of old, well established fences to the north and east. The position of the post fits well with respect to the relative positions of proximate corners. Manual excavation around the base of the post on September 29, 2016 yielded numerous rocks found, none of which appeared to have been set for the specific purpose of marking the corner. A rock to the south of the post was found on the surface of the ground in a horizontal position. A rock to the west of the post was found to have a distinct high point but the remainder of the rock was found to be quite massive with almost all of the rock buried. Neither of these rocks, nor any of the smaller rocks found in this vicinity, could be positively identified as marking the corner. The post was held as the best evidence of the original location of the corner. The post was removed during excavation and a Harrison monument was set in place of the post. The monument is anchored to the large rock to the west. The rock to the south was positioned such that it would provide protection for the monument from agricultural machinery working near the corner.

This corner was originally established as a wood post in 1820.

Kenneth E. Hedge, County Surveyor

James S. Swift, IN LS 20200054
March 23, 2017



Jefferson Township

Jackson Township

Marion Township

Section 16 T18N, R1W	Section 15 T18N, R1W
Section 21 T18N, R1W	Section 22 T18N, R1W

PHOTOGRAPHIC DOCUMENTATION

Date of photography: 9/27/2016-10/3/2016

The corner prior to excavation.
View of the leaning corner post from the south.



The post removed from the ground and the hole where the post previously stood.



A vertical section of storm pipe, to be filled with concrete to support the Harrison monument.



The final monument, viewed from the south.



For details and documentation, refer to related sheet "Section Corner Record."

SECTION CORNER RECORD

SW 300-350

BOONE COUNTY SURVEYOR'S OFFICE

State Plane grid coordinates NAD83 (2011):

North: 1729514.96 East: 3106323.28 (U.S. survey feet)

Type of monument: Harrison, 4" disk 'Section Corner'

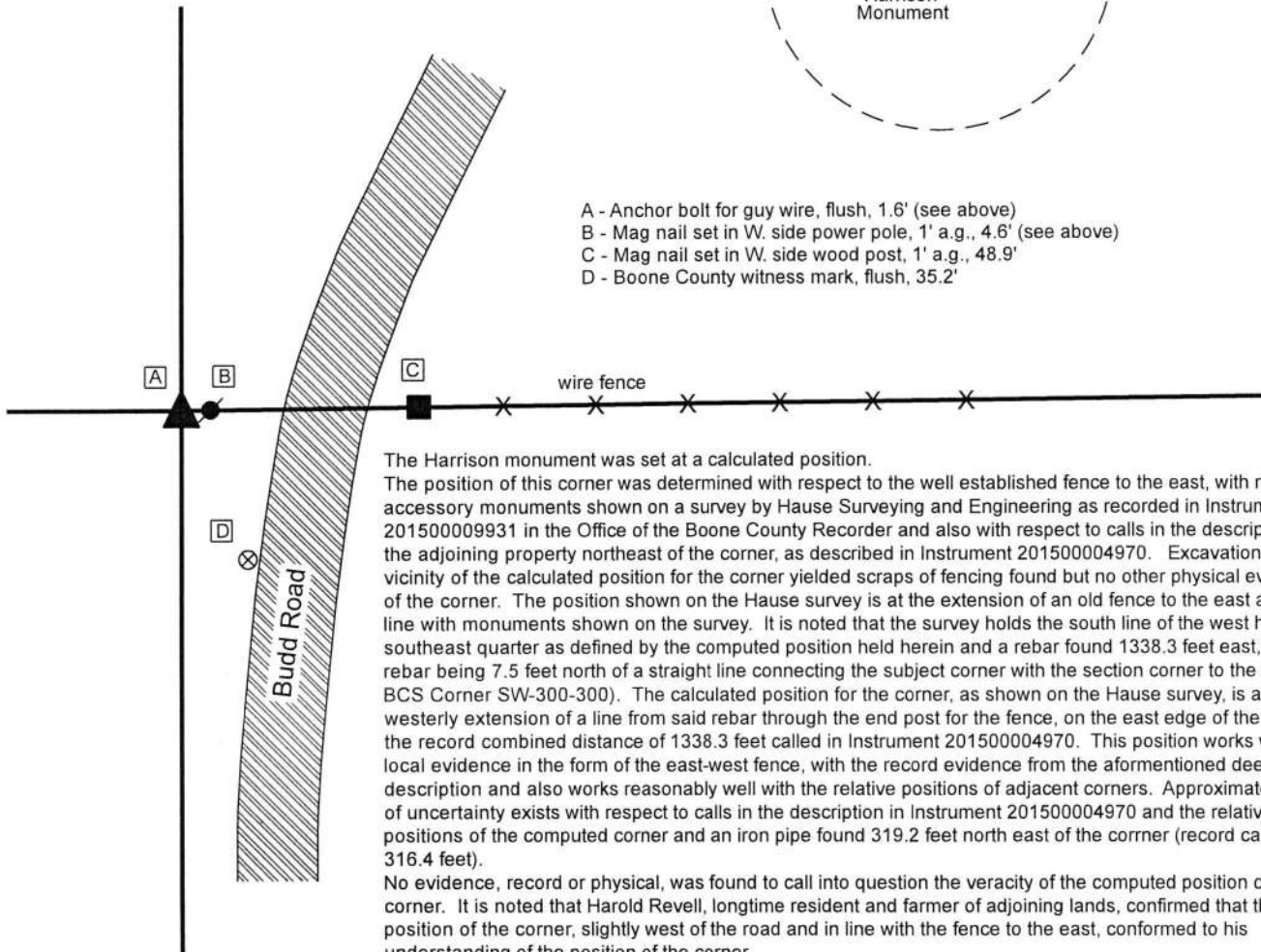
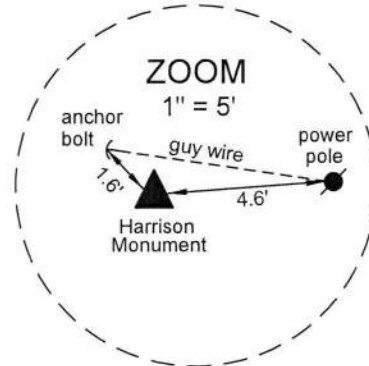
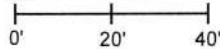
Depth: Flush with adjacent ground

Indiana tie card references:

IN02_T16NR1W16_76 IN02_TN18R1W21_04

CORNER WITNESS DETAIL

SCALE 1" = 40'

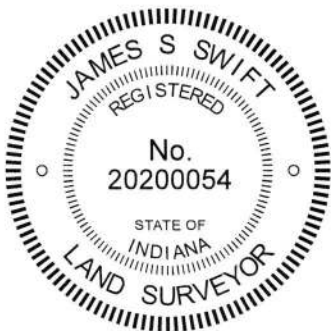


- A - Anchor bolt for guy wire, flush, 1.6' (see above)
- B - Mag nail set in W. side power pole, 1' a.g., 4.6' (see above)
- C - Mag nail set in W. side wood post, 1' a.g., 48.9'
- D - Boone County witness mark, flush, 35.2'

The Harrison monument was set at a calculated position. The position of this corner was determined with respect to the well established fence to the east, with respect to accessory monuments shown on a survey by Hause Surveying and Engineering as recorded in Instrument 201500009931 in the Office of the Boone County Recorder and also with respect to calls in the description for the adjoining property northeast of the corner, as described in Instrument 201500004970. Excavation in the vicinity of the calculated position for the corner yielded scraps of fencing found but no other physical evidence of the corner. The position shown on the Hause survey is at the extension of an old fence to the east and in line with monuments shown on the survey. It is noted that the survey holds the south line of the west half of the southeast quarter as defined by the computed position held herein and a rebar found 1338.3 feet east, said rebar being 7.5 feet north of a straight line connecting the subject corner with the section corner to the east (see BCS Corner SW-300-300). The calculated position for the corner, as shown on the Hause survey, is at the westerly extension of a line from said rebar through the end post for the fence, on the east edge of the road, at the record combined distance of 1338.3 feet called in Instrument 201500004970. This position works with the local evidence in the form of the east-west fence, with the record evidence from the aforementioned deed description and also works reasonably well with the relative positions of adjacent corners. Approximately 3 feet of uncertainty exists with respect to calls in the description in Instrument 201500004970 and the relative positions of the computed corner and an iron pipe found 319.2 feet north east of the corner (record call of 316.4 feet).

No evidence, record or physical, was found to call into question the veracity of the computed position of the corner. It is noted that Harold Revell, longtime resident and farmer of adjoining lands, confirmed that the position of the corner, slightly west of the road and in line with the fence to the east, conformed to his understanding of the position of the corner.

This corner was originally established as a wood post in 1821.



Kenneth E. Hedge
 Kenneth E. Hedge, County Surveyor

James S. Swift
 James S. Swift, IN LS 20200054

March 6, 2019

Center Township

Section 16
T18N, R1W

▲
 Section 21
 T18N, R1W