

# SECTION CORNER RECORD

# SE 200-250

## BOONE COUNTY SURVEYOR'S OFFICE

State Plane grid coordinates NAD83 (NSRS 2007):  
North: 1735379.23 East: 3137893.22 (U.S. survey feet)

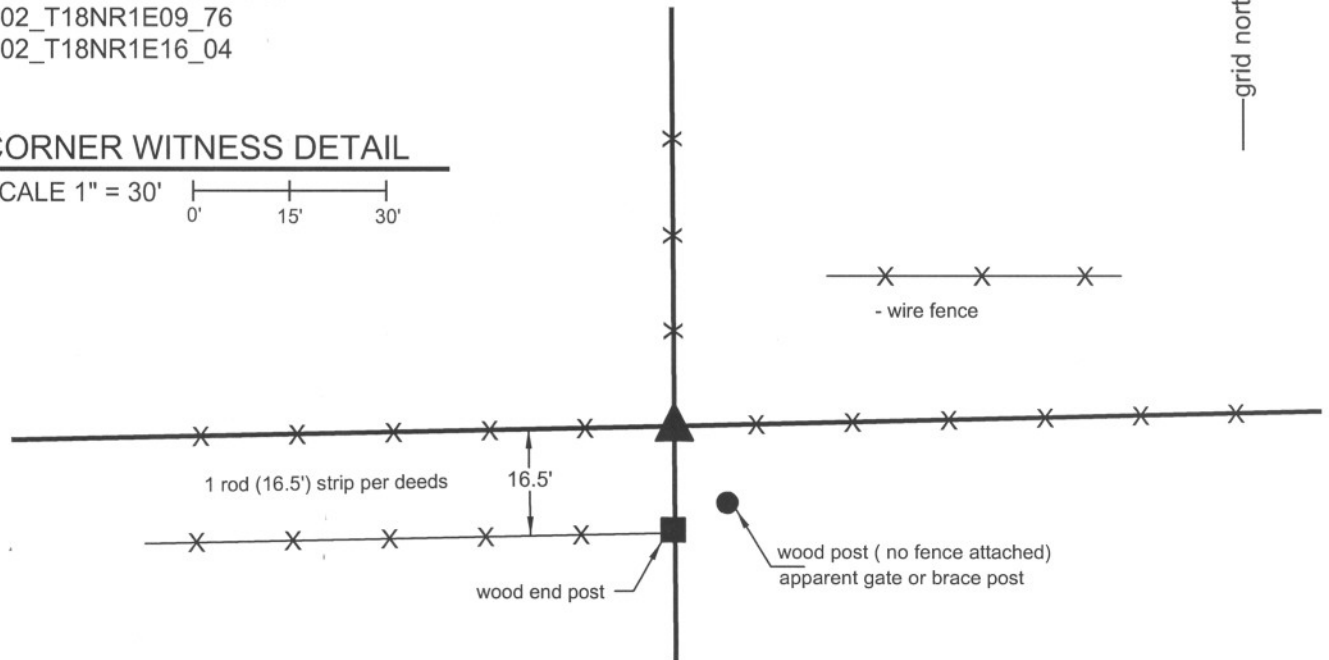
Type of monument: Harrison, 4" disk 'Section Corner'  
Depth: three inches above adjacent ground

Indiana tie card references:  
IN02\_T18NR1E09\_76  
IN02\_T18NR1E16\_04

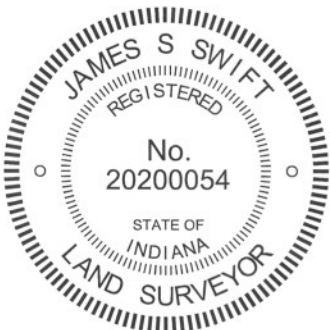


### CORNER WITNESS DETAIL

SCALE 1" = 30'

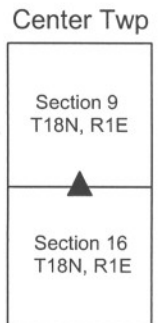


The harrison monument was set in place of a wood corner post. A BCS record of October 22, 1886 states "Found from Ash drove a stake at corner." A BCS record of January 7, 1891 states "Reestablished by measure from 2 to 4 Sec. 16, Set rock marked +." A BCS tie card dated November 28, 2005 shows the corner as a harrison monument with no documentation of source. The corner was excavated during the fall of 2010, with the final monument set on October 25, 2010. A harrison monument was found situated loosely in dirt. The position of this monument did not fit with the 2005 ties or representation of the position of the corner, though the coordinates for the found monument approximately match the coordinates shown on the tie card. The existing monument was 4 feet east and approximately 1.5 feet south of the ancient corner post at the intersection of fences to the north, east and west. The company which set the monument no longer exists and no information was gained as to either why the monument was set at that particular position, or how to resolve the discrepancies in between the tie card and the physical monument. It is noted that a substantial amount of wood was lying in the area, some of it in the form of a large, fallen ash tree and that significant effort was required to find and confirm the position of the actual corner post at the intersection of the three fences. It is possible that the position of the existing harrison was the result of a less thorough investigation of the situation at the corner. The erroneous representation of the corner on the tie card may be an indication that the large amount of debris, mostly in the form of down wood, created sufficient visual obstruction to create confusion as to the specific layout of the old fences and location of the primary corner post. General excavation of the area did not produce a stone with any particular markings. Given the uncertainties with the existing harrison monument and the unexplained variation from substantial evidence of occupation, the existing harrison was removed and the ancient corner post was held as the best available evidence of the corner. The post was cut off at approximately 30 inches below ground and a new harrison monument was set in concrete over the bottom of the post. This corner was originally established as a wood post in 1820.



*Kenneth E. Hedge*  
Kenneth E. Hedge, County Surveyor

*James S. Swift*  
James S. Swift, IN LS 20200054  
July 25, 2011



PHOTOGRAPHIC DOCUMENTATION

Date of photography: October 21-25, 2010

View of the vicinity of the corner after preliminary cleaning. See below for more information.



View of the corner post after the top portion was removed. Note the brace wires, a feature typically limited to corner posts.



Same photo as above, with annotation. Note the corner post is leaning south and west. The post was found to be rotten at ground level, but the portion below ground was clearly identifiable.

old corner post



harrison monument  
found set loosely in dirt.

The base of the corner post after all wire was removed from around it.



View of the corner after the harrison monument was set over the base of the old corner post.



For details and documentation, refer to related sheet "Section Corner Record."

# SECTION CORNER RECORD

SE 200-300

## BOONE COUNTY SURVEYOR'S OFFICE

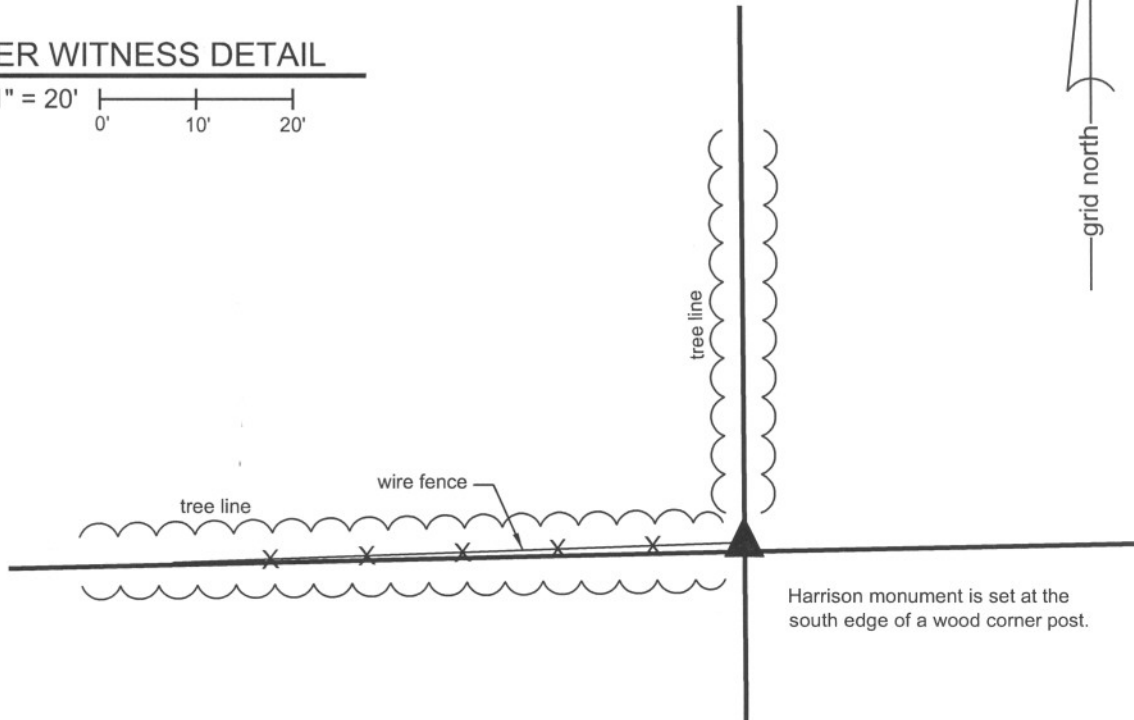
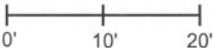
State Plane grid coordinates NAD83 (NSRS 2007):  
North: 1735442.39 East: 3140559.96 (U.S. survey feet)

Type of monument: Harrison, 4" disk 'Section Corner'  
Depth: three inches above adjacent ground

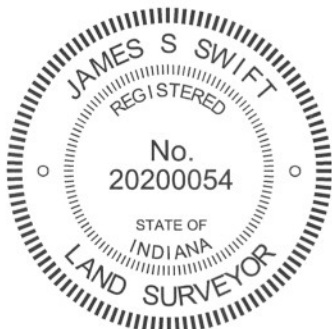
Indiana tie card references:  
IN02\_T18NR1E09\_80 IN02\_T18NR1E10\_72  
IN02\_T18NR1E16\_08 IN02\_T18NR1E15\_00

### CORNER WITNESS DETAIL

SCALE 1" = 20'



The harrison monument was set in place of a harrison monument found.  
A BCS record of October 22, 1886 states "Found from roots of Oak set a stone at cor." A BCS tie card dated November 28, 2005 shows the corner as a harrison monument with no documentation of source.  
This corner was excavated and monumented on October 22, 2010. A harrison monument was found at the southwest corner of the base of a wood corner post per the 2005 tie card. Numerous stones of a variety of sizes were found around the corner post, none of which had specific identifiable markings or which appeared to represent the section corner. A large rock found at the southeast corner of the post appeared to be a brace rock. The 2005 tie card does not document why the harrison monument was set at the base of the corner post or why the post itself was not held as the corner. Given the presence of the harrison monument and its immediate proximity to the post, the monument was held as the corner. The monument was reset in the same position in a more stable manner.  
The land adjacent to this corner is utilized as agricultural land and no acceptable witness ties were available. An orange fiberglass witness post was set at the side of the harrison monument to facilitate detection by field surveyors.  
This corner was originally established as a wood post in 1820.



*Kenneth E. Hedge*  
Kenneth E. Hedge, County Surveyor

*James S. Swift*  
James S. Swift, IN LS 20200054  
July 25, 2011

Center Township

Section 9 T18N, R1E	Section 10 T18N, R1E
Section 16 T18N, R1E	Section 15 T18N, R1E

# SECTION CORNER RECORD

# SE 250-200

## BOONE COUNTY SURVEYOR'S OFFICE

State Plane grid coordinates NAD83 (NSRS 2007):

North: 1732660.78 East: 3135250.57 (U.S. survey feet)

Type of monument: Harrison, 4" disk 'Section Corner'

Depth: One inch below adjacent road surface

Indiana tie card references:

IN02\_T18NR1E16\_36

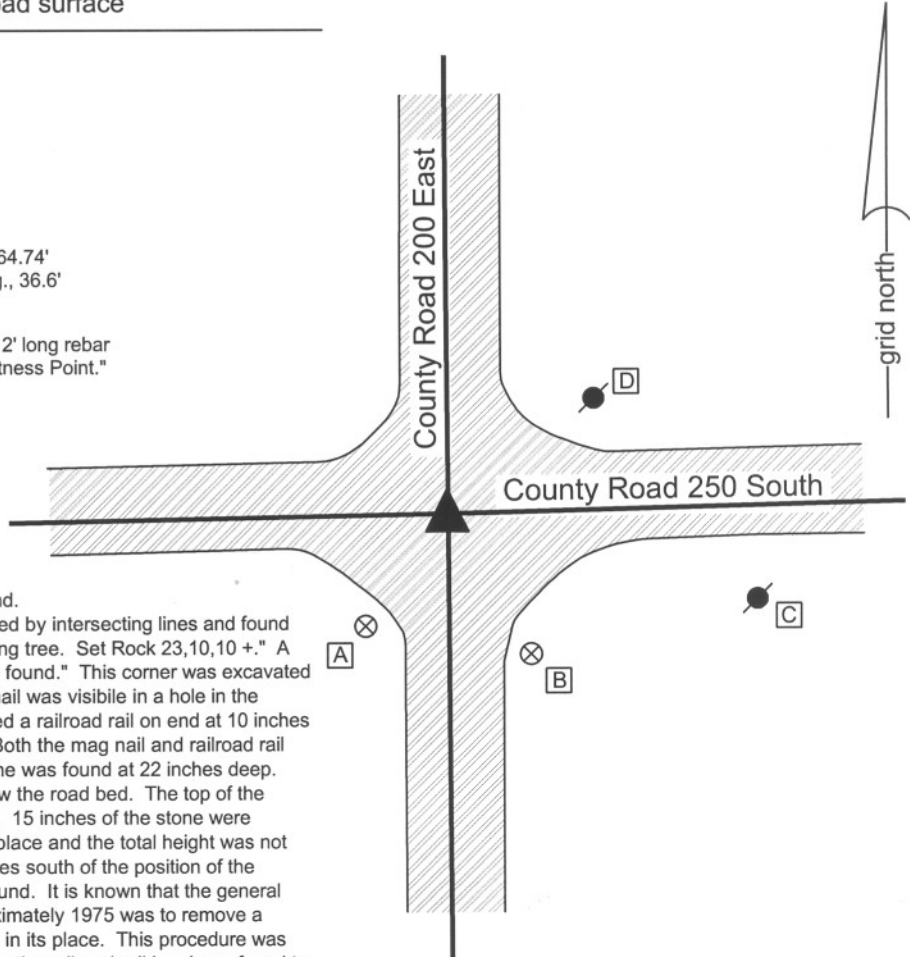
IN02\_T18NR1E17\_44

- A - Boone County witness mark, flush, 29.01'
- B - Boone County witness mark, flush, 33.85'
- C - Mag nail set in N. side power pole, 2.0' a.g., 64.74'
- D - Mag nail set in S.W. side power pole, 2.9' a.g., 36.6'

Boone County witness mark is a 3/8" diameter x 2' long rebar bearing a metal cap stamped "Boone County Witness Point."

### CORNER WITNESS DETAIL

SCALE 1" = 40'



The harrison monument was set over a stone found.

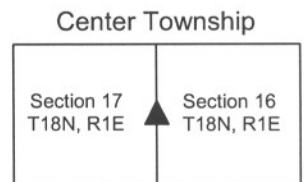
A BCS record of April 5, 1877 states "Reestablished by intersecting lines and found an old rod oak stump to correspond with the bearing tree. Set Rock 23,10,10 +." A BCS tie card dated September 1975 states "stone found." This corner was excavated on October 28, 2009. Prior to excavation a mag nail was visible in a hole in the asphalt 2 inches below grade. Excavation revealed a railroad rail on end at 10 inches deep directly below the position of the mag nail. Both the mag nail and railroad rail were removed during excavation. The record stone was found at 22 inches deep. The stone is fully embedded in the clay layer below the road bed. The top of the stone measures 10 inches E-W by 10 inches N-S. 15 inches of the stone were exposed on the north side. The stone was left in place and the total height was not measured. The top, center of the stone is 10 inches south of the position of the railroad rail. The 1975 tie card calls for a stone found. It is known that the general procedure of BCS field crews from 1967 to approximately 1975 was to remove a stone when found and install a railroad rail on end in its place. This procedure was not universally followed though, and in some cases the railroad rail has been found to have been set along an edge of the stone. The stone found matches the description of the record stone and appears to be undisturbed, embedded in the clay. The observed evidence indicated that this stone had not been disturbed in 1975, hence it did not appear that it was moved and the rail set in its place. It is concluded that either the rail was set along the north side of the stone or a different stone was found, accepted as the corner and the rail replaced that. Given the presence of the record stone and the uncertainty of the 1975 record, including the lack of any mention of a railroad rail, the record stone was held as the corner. The harrison monument was set over the approximate top, center of the stone. It is also noted that no specific marking were found on the stone. This particular stone is of a soft soapstone type material and the mark may have been worn off at some undetermined time in the past.

This corner was originally established as a wood post in June, 1820.

*Kenneth E. Hedge*  
 Kenneth E. Hedge, County Surveyor

*James S. Swift*  
 James S. Swift, IN LS 20200054

July 14, 2010



# SECTION CORNER RECORD

SE 250-300

## BOONE COUNTY SURVEYOR'S OFFICE

State Plane grid coordinates NAD83 (NSRS 2007):

North: 1732786.60 East: 3140580.71 (U.S. survey feet)

Type of monument: Harrison, 4" disk 'Section Corner'

Depth: three inches above adjacent ground

Indiana tie card references:

IN02\_T18NR1E15\_36

IN02\_T17NR2E15\_44

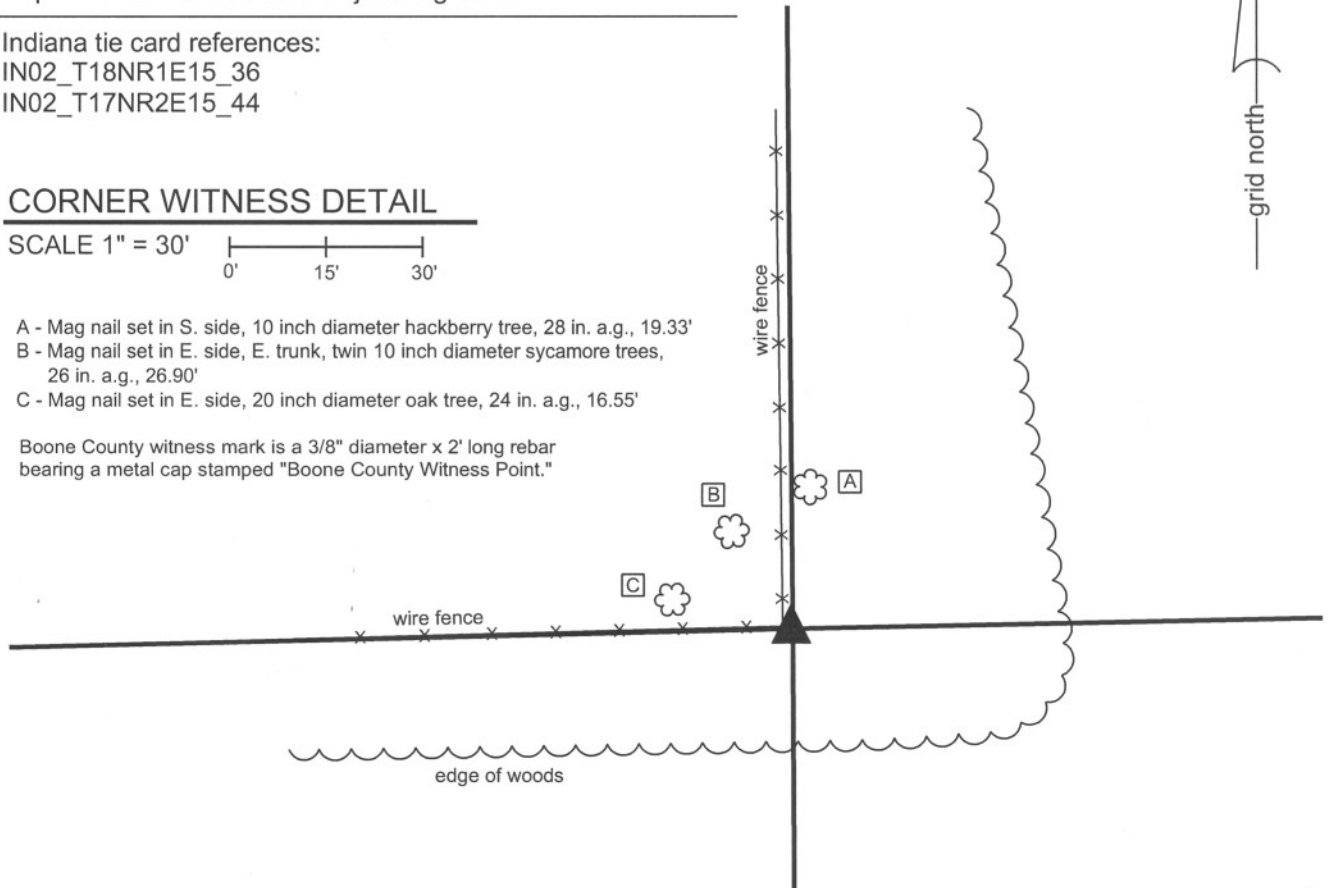
### CORNER WITNESS DETAIL

SCALE 1" = 30'



- A - Mag nail set in S. side, 10 inch diameter hackberry tree, 28 in. a.g., 19.33'
- B - Mag nail set in E. side, E. trunk, twin 10 inch diameter sycamore trees, 26 in. a.g., 26.90'
- C - Mag nail set in E. side, 20 inch diameter oak tree, 24 in. a.g., 16.55'

Boone County witness mark is a 3/8" diameter x 2' long rebar bearing a metal cap stamped "Boone County Witness Point."

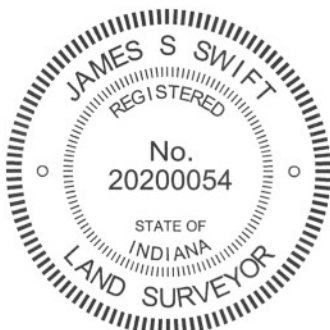


The harrison monument was set over a stone found.

An undated, unattributed record in the BCS Surveyor's Record states "re-established from stump of Walnut. Set Rock 11x8x5 +". No modern BCS tie cards were found referencing this corner.

This corner was excavated on October 21, 2010. Prior to excavation, a 5/8 inch diameter rebar was found adjacent to a wood corner post. Excavation revealed a stone found adjacent to and southeast of the rebar and post. The stone is approximately 17 inches N-S by 21 inches E-W by 10 inches tall, and the top of the stone was found at 2 inches below the surface of the ground. The stone has a large, flat horizontal top with a distinct "+" etched in the top at the approximate center of the flat area. This is not the stone mentioned in the undated record. Excavation of the area around the post did not reveal that stone. The stone which was found does not appear to be a brace rock, does appear to be intended to mark the corner and was accepted as the best available evidence of the corner. The stone was left in place. The top of the stone was encased in concrete and a harrison monument was set directly above the etched "+" on the top of the stone.

This corner was originally established as a wood post in 1820.



*Kenneth E. Hedge*  
Kenneth E. Hedge, County Surveyor

*James S. Swift*  
James S. Swift, IN LS 20200054  
July 25, 2011

Center Township

Section 16 T18N, R1E	Section 15 T18N, R1E
-------------------------	-------------------------

PHOTOGRAPHIC DOCUMENTATION

Date of photography: October 19-21, 2010

View of the stone as first exposed.



The stone exposed and the broken-off corner post.



The stone, post and a smaller stone found next to the marked corner stone.



For details and documentation, refer to related sheet "Section Corner Record."

# SECTION CORNER RECORD

SE 300-200


## BOONE COUNTY SURVEYOR'S OFFICE

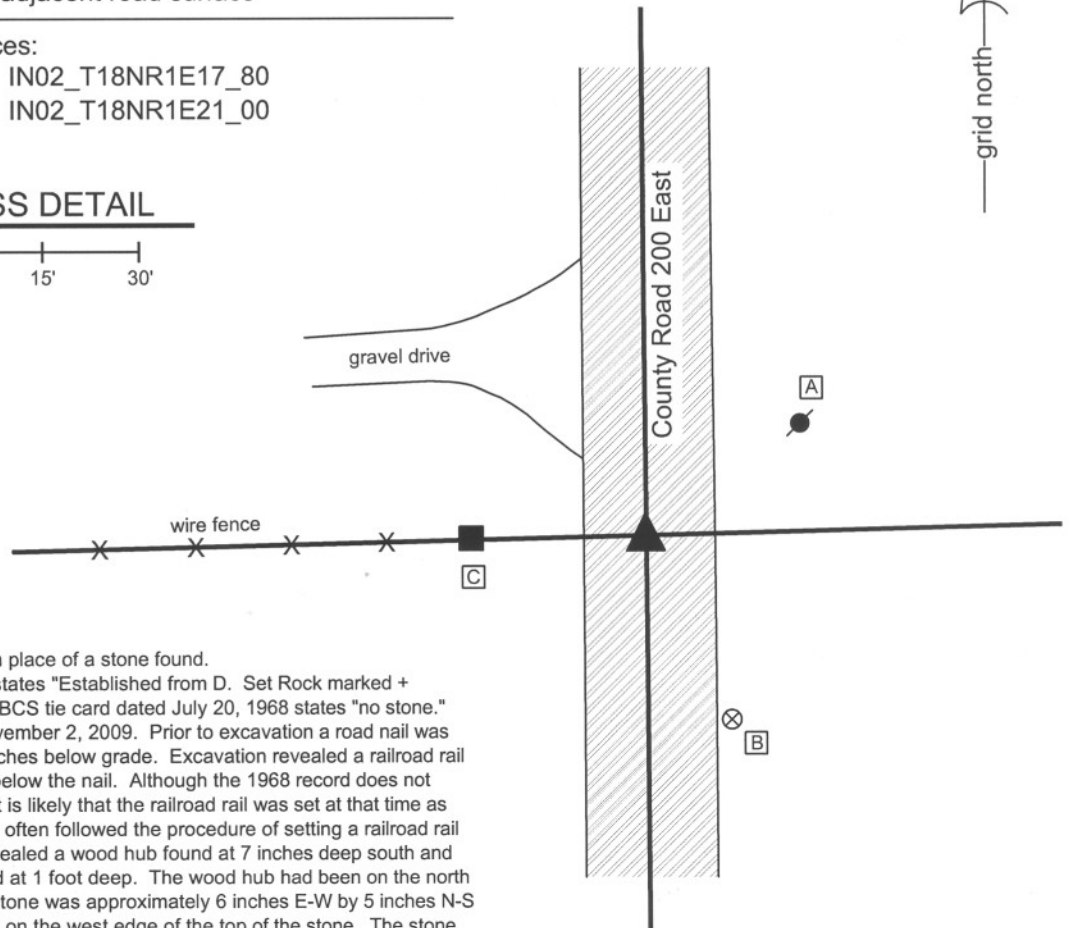
State Plane grid coordinates NAD83 (NSRS 2007):  
 North: 1730003.10 East: 3135269.676 (U.S. survey feet)

Type of monument: Harrison, 4" disk 'Section Corner'  
 Depth: One inch below adjacent road surface

Indiana tie card references:  
 IN02\_T18NR1E16\_72 IN02\_T18NR1E17\_80  
 IN02\_T18NR1E20\_08 IN02\_T18NR1E21\_00

### CORNER WITNESS DETAIL

SCALE 1" = 30'  




The harrison monument was set in place of a stone found. A BCS record of May 8 - 9, 1901 states "Established from D. Set Rock marked + 12.10.8 1/2 brick underneath." A BCS tie card dated July 20, 1968 states "no stone." This corner was excavated on November 2, 2009. Prior to excavation a road nail was visible in a hole in the asphalt 2 inches below grade. Excavation revealed a railroad rail on end at 9 inches deep, directly below the nail. Although the 1968 record does not specify what monument was set, it is likely that the railroad rail was set at that time as BCS field crews of that time-frame often followed the procedure of setting a railroad rail at the corner. Excavation also revealed a wood hub found at 7 inches deep south and east of the rail. A stone was found at 1 foot deep. The wood hub had been on the north side of the stone. The top of the stone was approximately 6 inches E-W by 5 inches N-S and an etched "+" is clearly visible on the west edge of the top of the stone. The stone was removed and measured. The maximum dimensions of the stone are 10 inches tall by 8 inches E-W by 6 inches N-S. This is uniformly 2 inches smaller than the dimensions reported in the record. The record also calls for 1/2 brick underneath, which was found directly below the stone. The 1/2 brick was somewhat deteriorated was visible in the form of various small pieces. The stone was accepted as being the same monument set in 1901, but it is not clear why the 1901 record describes the stone as 2 inches larger in all dimensions than it actually is. The harrison monument was set in place of the stone at the same horizontal position as the top, high point of the stone, in line with the etched + on the west side. The nail and railroad rail, both removed during excavation, were 0.4 foot north and 0.6 foot west of the top, high point of the stone. This corner was originally established as a wood post in June, 1820.

- A - Mag nail set in S. side power pole, 2.0' a.g., 28.7'
- B - Boone County witness mark, flush, 31.68'
- C - Mag nail set in E. side wood post, 0.5' a.g., 25.6'

Boone County witness mark is a 3/8" diameter x 2' long rebar bearing a metal cap stamped "Boone County Witness Point."



*Kenneth E. Hedge*  
 Kenneth E. Hedge, County Surveyor

Center Twp

*James S. Swift*  
 James S. Swift, IN LS 20200054  
 July 14, 2010

Perry Twp

Section 17 T18N, R1E	Section 16 T18N, R1E
Section 20 T18N, R1E	Section 21 T18N, R1E

PHOTOGRAPHIC DOCUMENTATION  
Date of photography: November 2, 2009

View of the stone as first exposed.  
View from above and west.



Close-up on the stone, showing the etched mark on the west side of the top of the stone.



View of the stone from above and north.



For details and documentation, refer to related sheet "Section Corner Record."

View from the south, looking across the stone and north along County Road 200 East.





# SECTION CORNER RECORD

## BOONE COUNTY SURVEYOR'S OFFICE

SE 300-250

State Plane grid coordinates NAD83 (NSRS 2007):

North: 1730068.35 East: 3137938.53 (U.S. survey feet)

Type of monument: Harrison, 4" disk 'Section Corner'

Depth: One inch below adjacent road surface

Indiana tie card references:

IN02\_T18NR1E16\_76

IN02\_T18NR1E21\_04

### CORNER WITNESS DETAIL

SCALE 1" = 30'

- A - Boone County witness mark, flush, 17.71'
- B - Mag nail is in W. side power pole, 2.0' a.g., 101.1'
- C - Boone County witness mark, flush, 60.21'

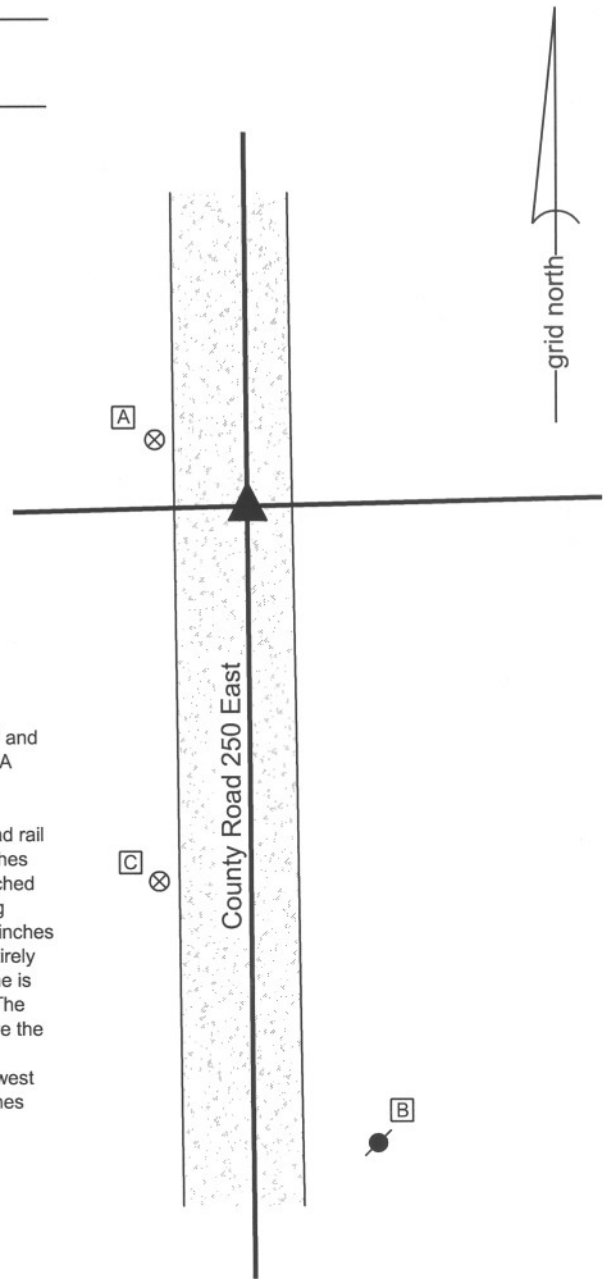
Boone County witness mark is a 3/8" diameter x 2' long rebar bearing a metal cap stamped "Boone County Witness Point."

The harrison monument was set over a stone found.

A BCS record April 10, 1900 states "Re-est. by running line from "F" through "8" and "4" and by running line from "C" through "b". Set stone (very large) marked "+." A BCS tie card dated October 25, 2005 shows the corner as a steel rail with no documentation of source.

This corner was excavated on December 15, 2009. Prior to excavation a railroad rail was found at 7 inches below grade. Excavation revealed a stone found at 9 inches below grade well north of the railroad rail. The stone has a clearly visible "+" etched on the top and is fully embedded in the clay layer below the road bed, protruding approximately 2 inches out of the clay into the bottom of the road bed. With 10 inches exposed, the stone measures 10 inches N-S by 13 inches E-W and remains entirely stable, indicating that it extends deeper into the clay. The south side of the stone is relatively flat and vertical. The harrison monument was truncated at 4 inches. The top of the stone was encased in concrete and the harrison was set directly above the etched "+" at approximately 5 inches below the surface of the gravel road. The railroad rail, removed during excavation, had been 5.3 feet south and 0.15 foot west of the etched "+" on the stone. It is noted that a straight line connecting the stones found at the section corners 1/2 mile west and east falls approximately midway between the positions of the stone and steel rail.

This corner was originally established as wood corner post in June, 1820.



*Kenneth E. Hedge*  
 Kenneth E. Hedge, County Surveyor

*James S. Swift*  
 James S. Swift, IN LS 20200054  
 July 14, 2010

Center Twp	Section 16 T18N, R1E
Perry Twp	Section 21 T18N, R1E

PHOTOGRAPHIC DOCUMENTATION

Date of photography: December 15, 2009

View of the stone as first exposed.



View of the stone more fully exposed.



View from the south, looking across the stone and north along County Road 250 East.



For details and documentation, refer to related sheet "Section Corner Record."

# SECTION CORNER RECORD

# SE 300-300

## BOONE COUNTY SURVEYOR'S OFFICE

State Plane grid coordinates NAD83 (NSRS 2007):

North: 1730128.28 East: 3140594.30 (U.S. survey feet)

Type of monument: Harrison, 4" disk 'Section Corner'

Depth: One inch below adjacent road surface

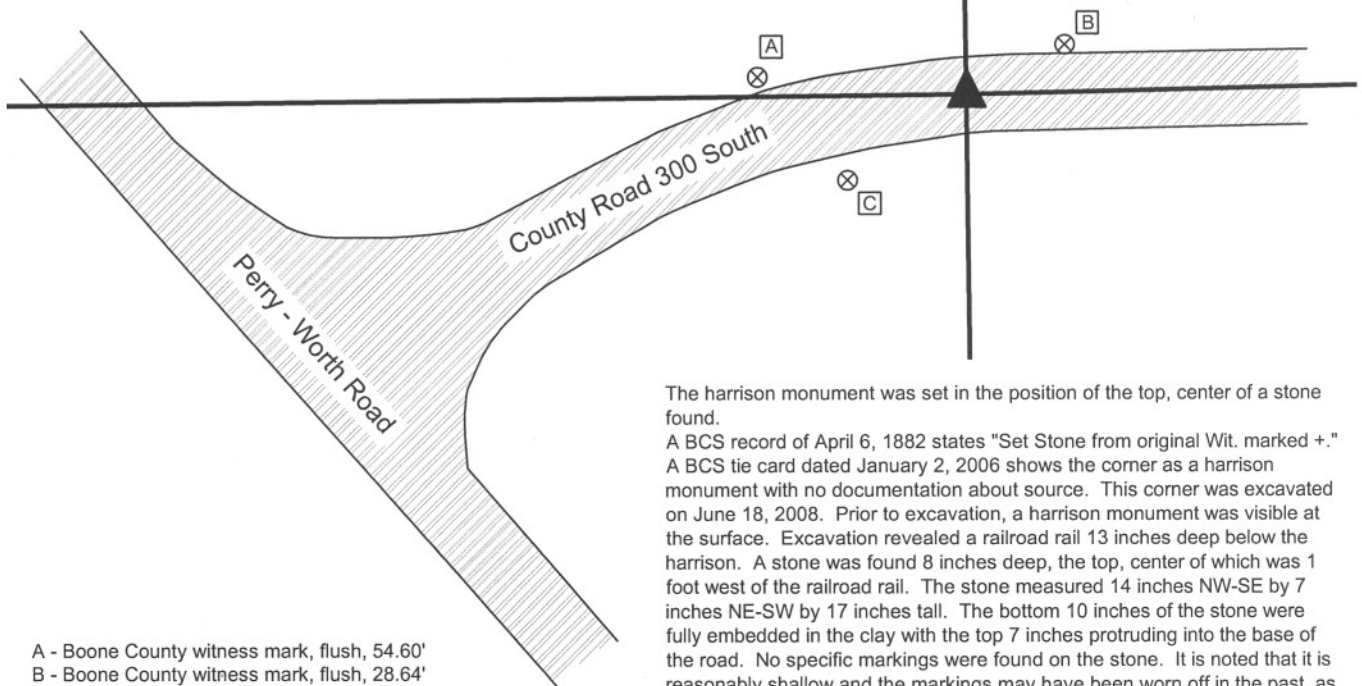
Indiana tie card references:

IN02\_T18NR1E15\_72    IN02\_T18NR1E16\_80

IN02\_T18NR1E21\_08    IN02\_T18NR1E22\_00

### CORNER WITNESS DETAIL

SCALE 1" = 50'



- A - Boone County witness mark, flush, 54.60'
- B - Boone County witness mark, flush, 28.64'
- C - Boone County witness mark, flush, 38.06'

Boone County witness mark is a 3/8" diameter x 2' long rebar bearing a metal cap stamped "Boone County Witness Point."

The harrison monument was set in the position of the top, center of a stone found.

A BCS record of April 6, 1882 states "Set Stone from original Wit. marked +."  
 A BCS tie card dated January 2, 2006 shows the corner as a harrison monument with no documentation about source. This corner was excavated on June 18, 2008. Prior to excavation, a harrison monument was visible at the surface. Excavation revealed a railroad rail 13 inches deep below the harrison. A stone was found 8 inches deep, the top, center of which was 1 foot west of the railroad rail. The stone measured 14 inches NW-SE by 7 inches NE-SW by 17 inches tall. The bottom 10 inches of the stone were fully embedded in the clay with the top 7 inches protruding into the base of the road. No specific markings were found on the stone. It is noted that it is reasonably shallow and the markings may have been worn off in the past, as has been observed on other stones. A small rock and remnants of wood were found along the bottom of the north edge of the stone. It is noted that the top of the rail was below the top of the stone. No source was found for the establishment of the rail. The stone was removed and the harrison monument was set in the position of the top, center of the stone.  
 This corner was originally established as a wood post in June, 1820.



*Kenneth E. Hedge*  
 Kenneth E. Hedge, County Surveyor

Center Township

*James S. Swift*  
 James S. Swift, IN LS 20200054

Perry Township

March 11, 2009

Section 16 T18N, R1E	Section 15 T18N, R1E
Section 21 T18N, R1E	Section 22 T18N, R1E

PHOTOGRAPHIC DOCUMENTATION

Date of photography: June 18, 2008

Corner stone and railroad rail.  
Overhead view from North.



Corner stone and railroad rail.  
Overhead view from West.



View of corner stone showing clay at west end.  
Overhead view from North.



Corner stone removed from ground, showing  
extent to which stone was embedded in clay.  
Approximately 10" of stone was in clay and 7"  
protruding into bottom of road bed.



For details and documentation, refer to  
related sheet "Section Corner Record."