

SECTION CORNER RECORD

BOONE COUNTY SURVEYOR'S OFFICE

NW 900-200

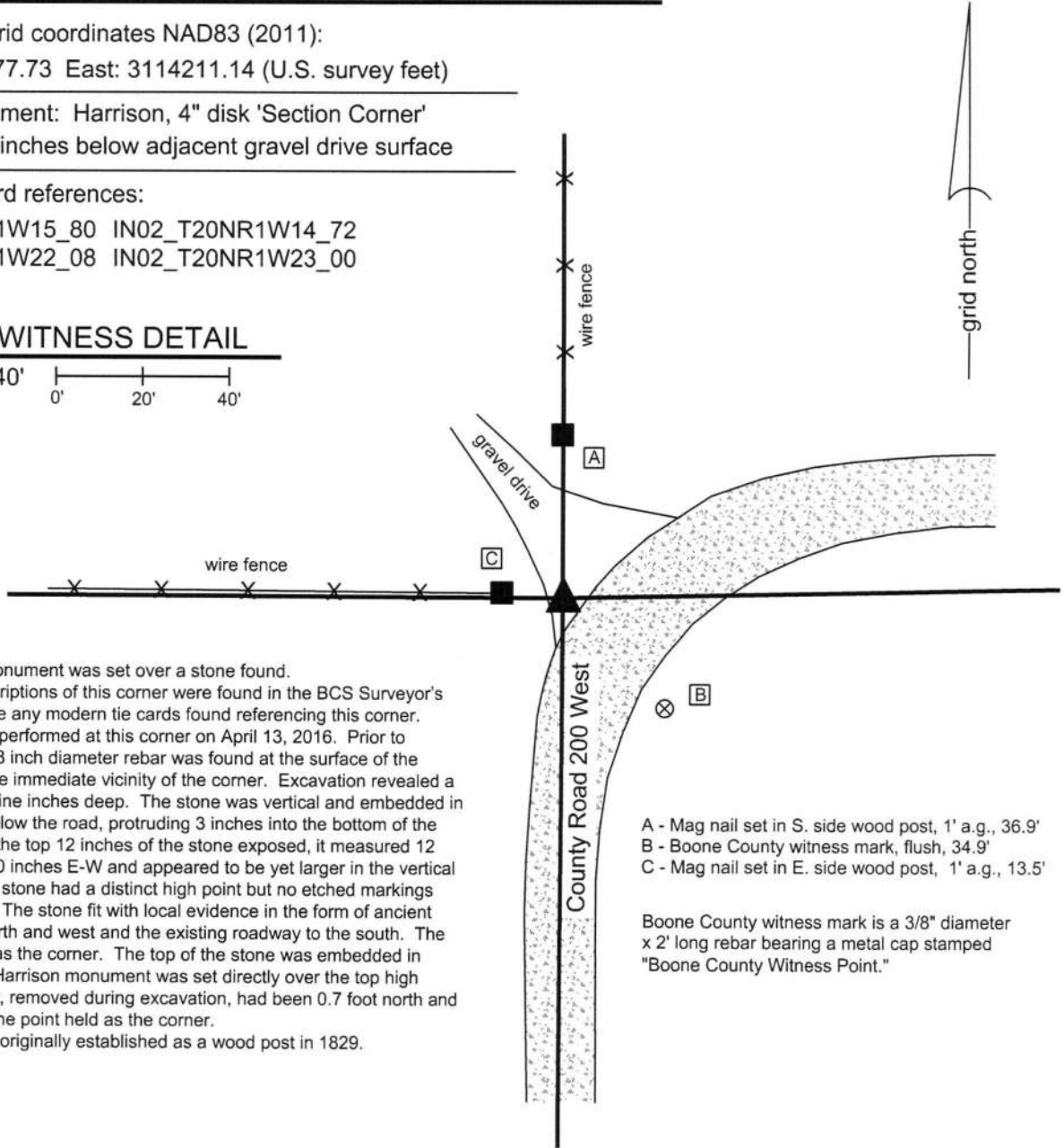
State Plane grid coordinates NAD83 (2011):
 North: 1793177.73 East: 3114211.14 (U.S. survey feet)

Type of monument: Harrison, 4" disk 'Section Corner'
 Depth: Three inches below adjacent gravel drive surface

Indiana tie card references:
 IN02_T20NR1W15_80 IN02_T20NR1W14_72
 IN02_T20NR1W22_08 IN02_T20NR1W23_00

CORNER WITNESS DETAIL

SCALE 1" = 40'



The Harrison monument was set over a stone found. No specific descriptions of this corner were found in the BCS Surveyor's Record, nor were any modern tie cards found referencing this corner. Excavation was performed at this corner on April 13, 2016. Prior to excavation, a 5/8 inch diameter rebar was found at the surface of the gravel road in the immediate vicinity of the corner. Excavation revealed a stone found at nine inches deep. The stone was vertical and embedded in the clay layer below the road, protruding 3 inches into the bottom of the road bed. With the top 12 inches of the stone exposed, it measured 12 inches N-S by 10 inches E-W and appeared to be yet larger in the vertical dimension. The stone had a distinct high point but no etched markings were observed. The stone fit with local evidence in the form of ancient fences to the north and west and the existing roadway to the south. The stone was held as the corner. The top of the stone was embedded in concrete and a Harrison monument was set directly over the top high point. The rebar, removed during excavation, had been 0.7 foot north and 1.3 feet east of the point held as the corner. This corner was originally established as a wood post in 1829.

- A - Mag nail set in S. side wood post, 1' a.g., 36.9'
- B - Boone County witness mark, flush, 34.9'
- C - Mag nail set in E. side wood post, 1' a.g., 13.5'

Boone County witness mark is a 3/8" diameter x 2' long rebar bearing a metal cap stamped "Boone County Witness Point."



Kenneth E. Hedge
 Kenneth E. Hedge, County Surveyor

James S. Swift
 James S. Swift, IN LS 20200054
 March 23, 2017

Washington Township

Section 15 T20N, R1W	Section 14 T20N, R1W
Section 22 T20N, R1W	Section 23 T20N, R1W

SECTION CORNER RECORD

NW 900-300

BOONE COUNTY SURVEYOR'S OFFICE

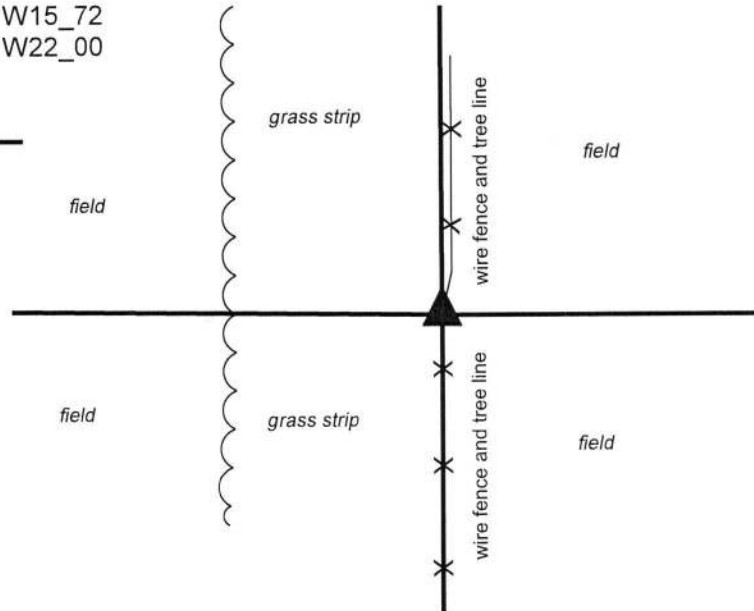
State Plane grid coordinates NAD83 (2011) (U.S. survey feet):
Corner (Center of Post): North: 1793178.08 East: 3108957.16
Witness (Mag with shiner): North: 1793178.08 East: 3108956.91

Indiana tie card references:

IN02_T20NR1W16_80 IN02_T20NR1W15_72
IN02_T20NR1W21_08 IN02_T20NR1W22_00

CORNER WITNESS DETAIL

SCALE 1" = 40'



The wood post is marked with a mag nail with washer stamped 'Boone County Surveyor.' The post is within a heavily wooded north-south tree line / fence line. No specific distance ties are provided.

The wood corner post was found in place.

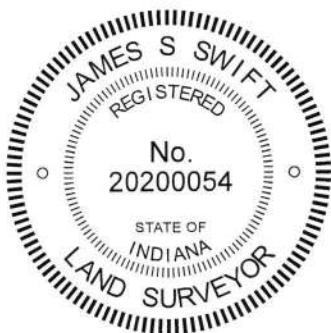
A BCS record of March 13-14, 1863 states, with respect to this corner, "Reest'd from trees. One standing. Other cut down. Set Rock 16x10x6 marked +." No recent BCS tie cards were found referencing this corner. The corner is shown as 'calculated position' on a survey by Jonathon E. Hause, LS 20600040, in Survey Book 14, page 11 in the Office of the Boone County Recorder.

This corner was excavated on November 14, 2018. Prior to excavation, a wood corner post was found with a wood brace on the south side at the terminus of fences to the north and south. Another post was found to the south, but appeared to be a brace post for the primary corner post. The fence to the north shifts to the east, slightly north of the post. This section of fence appears to be newer than the fence to the south. Excavation around the post revealed mostly roots of trees found. The north-south fence represents a heavily wooded fence line and the tree roots are thickly intertwined in the immediate vicinity of the post. Some fencing was found in the ground bearing west from the post, confirming the post as the corner of fences in three cardinal directions. Probing and manual excavation below one foot deep is impractical. Mechanized excavation would damage the valuable trees to the north and south of the corner and was not undertaken. It is possible that the corner stone remains undetected in the vicinity of the post.

It is observed that the record of March 13-14, 1863 contains information about the south quarter corner and southwest corner of section 16 as well as the subject corner, being the southeast corner of section 16. The record calls for stones at the other two corners, both of which have been found (see BCS corners NW 900-350 and NW 900-400). The record clearly indicates that the south quarter corner of section 16 was established equidistant from the southeast and southwest corners of the section and appears to indicate that all three corners fall along a straight line. The corner post found and discussed above falls very close to an equidistant prolongation of the line connecting the stones found at those corners, with the center of the post being approximately 1.2 feet south and 1.2 feet east of the theoretical point. This is held as confirmation that the position of the found post conforms closely with the position of the corner shown on the 1863 record. An approximate position for the calculated corner shown on the aforementioned Hause survey was estimated to be 8.5 feet east and 14.6 feet north of the post, as computed with respect to the respective positions of other corners and evidence shown on the survey. No monument or evidence of occupation was found in the vicinity of this computed position and no explanation is offered on the survey for how this position was computed.

The found corner post was held as marking the corner. A mag nail with washer stamped 'Boone County Surveyor' was driven into the west side of the post, 0.5 foot above ground. The specific location of the corner is held to be the center of the post, 0.25 foot east of the nail. The post is 6 inches by 6 inches.

This corner was originally established as a wood post in 1829.



Kenneth E. Hedge
Kenneth E. Hedge, County Surveyor

James S. Swift
James S. Swift, IN LS 20200054
February 20, 2019

Washington Township

Section 16 T20N, R1W	Section 15 T20N, R1W
Section 21 T20N, R1W	Section 22 T20N, R1W

SECTION CORNER RECORD

BOONE COUNTY SURVEYOR'S OFFICE

NW 950-200

State Plane grid coordinates NAD83 (CORS96):

North: 1795830.92 East: 3114209.95 (U.S. survey feet)

Type of monument: Harrison, 4" disk 'Section Corner'

Depth: six inches below adjacent gravel road surface

Indiana tie card references:

IN02_T20NR1W15_44 IN02_T20NR1W14_36

CORNER WITNESS DETAIL

SCALE 1" = 40'

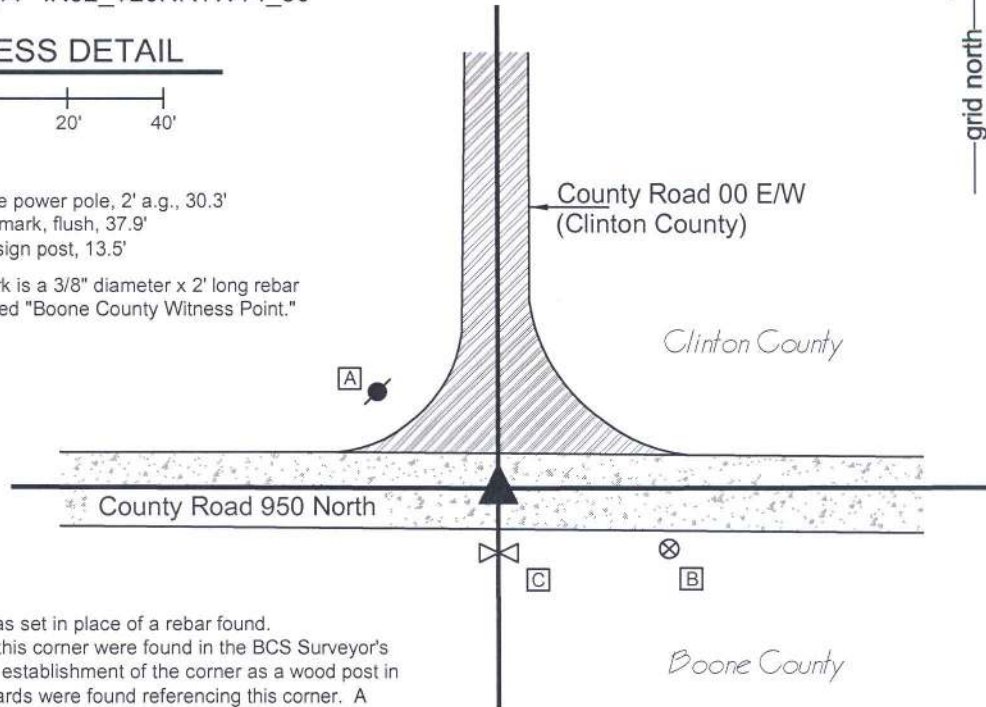


A - Mag nail set in S.E. side power pole, 2' a.g., 30.3'

B - Boone County witness mark, flush, 37.9'

C - East edge, metal road sign post, 13.5'

Boone County witness mark is a 3/8" diameter x 2' long rebar bearing a metal cap stamped "Boone County Witness Point."



The Harrison monument was set in place of a rebar found. No specific descriptions of this corner were found in the BCS Surveyor's Record beyond the original establishment of the corner as a wood post in 1829. No recent BCS tie cards were found referencing this corner. A Clinton County tie card dated October 15, 1981 shows the corner as "bar" with no documentation of source.

This corner was excavated on September 2, 2014. Prior to excavation a rebar was found at 5 inches deep in the gravel road. Excavation of an area extending 4 feet in all directions yielded no further evidence of the corner. The bottom of the road bed was found at 18 inches deep, below which was the dense clay commonly found under the road in Boone County. Excavation was performed to at least 20 inches deep.

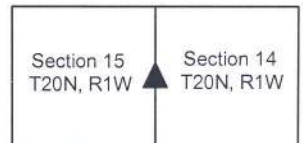
The rebar fit with local evidence of the corner in the form of the centers of the roads to the north, east and west. None of the distance tie references from the 1981 Clinton County tie card were found. The card graphically demonstrates the "bar" to be at the intersection of the road and it is believed that the found rebar is the same monument as shown on the Clinton County tie card. Having found no contrary evidence, the rebar was accepted as marking the corner. The rebar was removed from the road and replaced with a Harrison monument set in the same position.



Kenneth E. Hedge
Kenneth E. Hedge, County Surveyor

James S. Swift
James S. Swift, IN LS 20200054
March 27, 2015

Jackson Township
Clinton County
Washington Twp
Boone County



SECTION CORNER RECORD

NW 950-250

BOONE COUNTY SURVEYOR'S OFFICE

State Plane grid coordinates NAD83 (CORS96):

North: 1795839.68 East: 3111591.13 (U.S. survey feet)

Type of monument: Harrison, 4" disk 'Section Corner'

Depth: six inches below adjacent gravel road surface

Indiana tie card references:

IN02_T20NR1W15_40

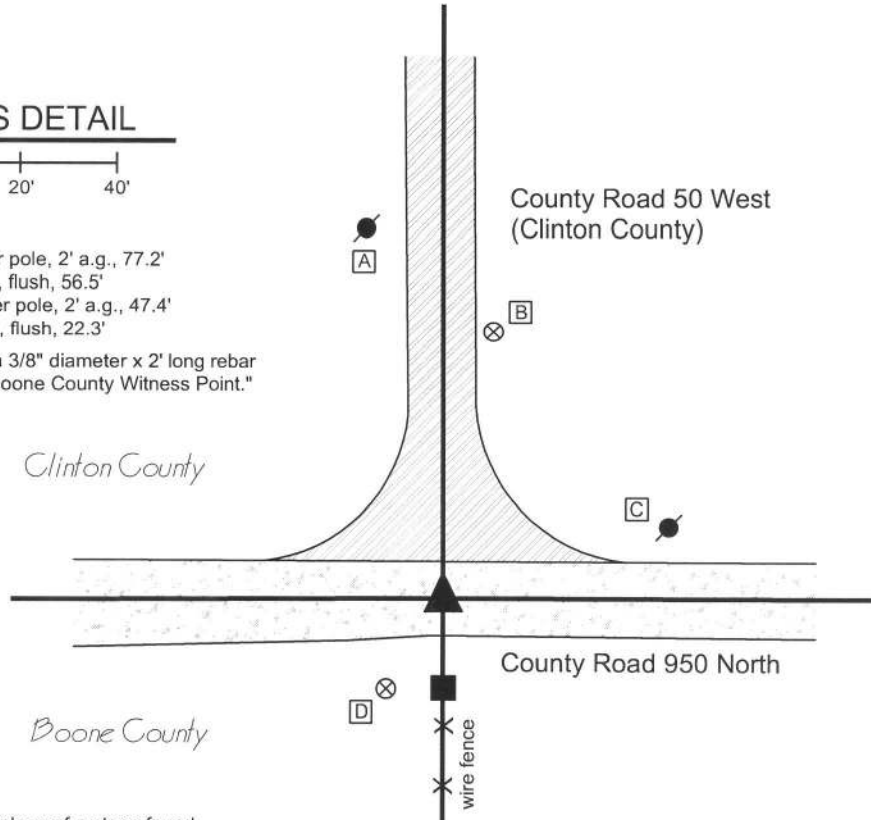


CORNER WITNESS DETAIL

SCALE 1" = 40'

- A - Mag nail set in S. side power pole, 2' a.g., 77.2'
- B - Boone County witness mark, flush, 56.5'
- C - Mag nail set in W. side power pole, 2' a.g., 47.4'
- D - Boone County witness mark, flush, 22.3'

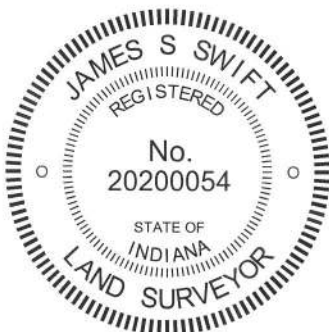
Boone County witness mark is a 3/8" diameter x 2' long rebar bearing a metal cap stamped "Boone County Witness Point."



The Harrison monument was set in place of a stone found.

This corner is not an original corner, set by the federal surveyors when this township was subdivided in 1829. The first entry for this section in the BCS Surveyor's Record is a record of September 18, 1848. This record does not specifically describe the point but does include it as the terminal point for measurements to other corners. A record of December 25, 1865 also shows the corner as a terminal point for measurements to other corners. These records are taken as a clear indication that this corner was established, acknowledged and almost certainly monumented at an early date by the Boone County Surveyor. No specific descriptions or tie cards were found referencing this corner by the Clinton County Surveyor's Office.

This corner was excavated on September 3, 2014. Prior to excavation, a railroad rail was found at 6 inches deep in the gravel road. A smooth shafted iron rod was also found at 6 inches, 0.5 foot west and 0.1 foot north of the rail. The source of these monuments is not known, though they fit well with local evidence, being at the approximate intersection of the roads to the north, east and west and generally in line with the old fence to the south. Excavation revealed a stone found at 5 inches deep, south and west of the rail. The stone was embedded in the clay layer below the road, and measured 19 inches E-W by 14 inches N-S by 16 inches tall. No specific marks were identified on the stone but a clearly discernable high point was visible near the northwest edge of the stone. The stone did not appear to have been leaned or disturbed in any way. The fact that the high point was near the northwest corner appeared to be function of the shape of the stone rather than evidence of prior displacement of the stone. The stone was accepted as the best available evidence of the corner. The stone, rail and iron rod were all removed and a Harrison monument was set in place of the top, high point of the stone. The rail and iron rod had been both generally along the northeast edge of the stone. The rail had been 0.6 foot east and 0.4 foot north of the point held as the corner. The rebar had been 0.1 foot east and 0.5 foot north of this point.

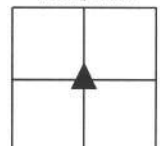


Kenneth E. Hedge, County Surveyor

James S. Swift, IN LS 20200054
 March 27, 2015

Jackson Township
 Clinton County
 Washington Twp
 Boone County

Section 15
T20N, R1W



PHOTOGRAPHIC DOCUMENTATION

Date of photography: September 3, 2014

The stone as originally found. The rail is to the left of the stone, having been removed from the road, and the iron rod is in front of the stone.



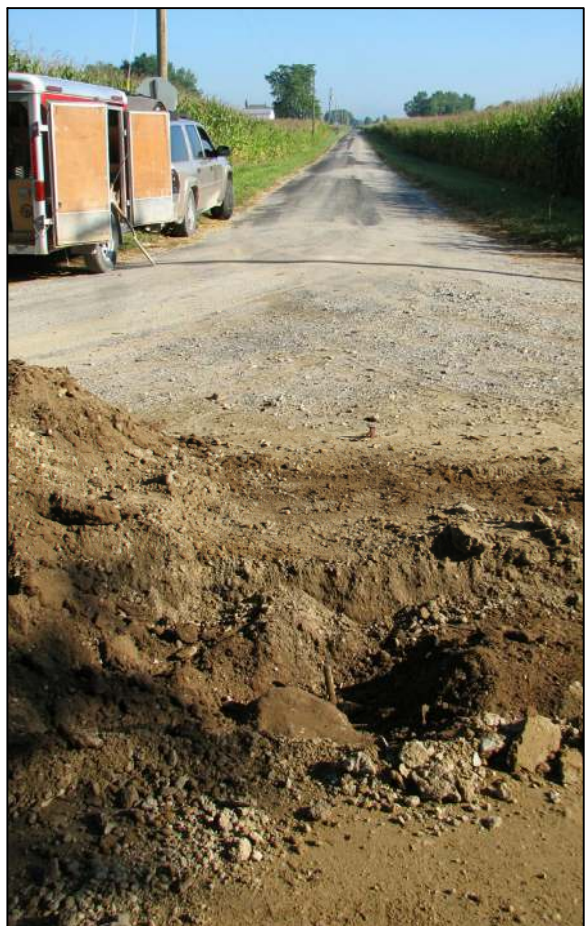
The stone as it is being removed from the road. The post on the south side of the road is partially visible in the background.



View from the west looking across the stone and east along County Road 950 North.



View from the south looking across the stone and north along Clinton County Road 50 West.



For details and documentation, refer to related sheet "Section Corner Record."

SECTION CORNER RECORD

NW 950-300

BOONE COUNTY SURVEYOR'S OFFICE

State Plane grid coordinates NAD83 (CORS96):

North: 1795830.66 East: 3108943.42 (U.S. survey feet)

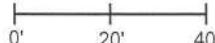
Type of monument: Harrison, 4" disk 'Section Corner'

Depth: six inches below adjacent gravel road surface

Indiana tie card references:

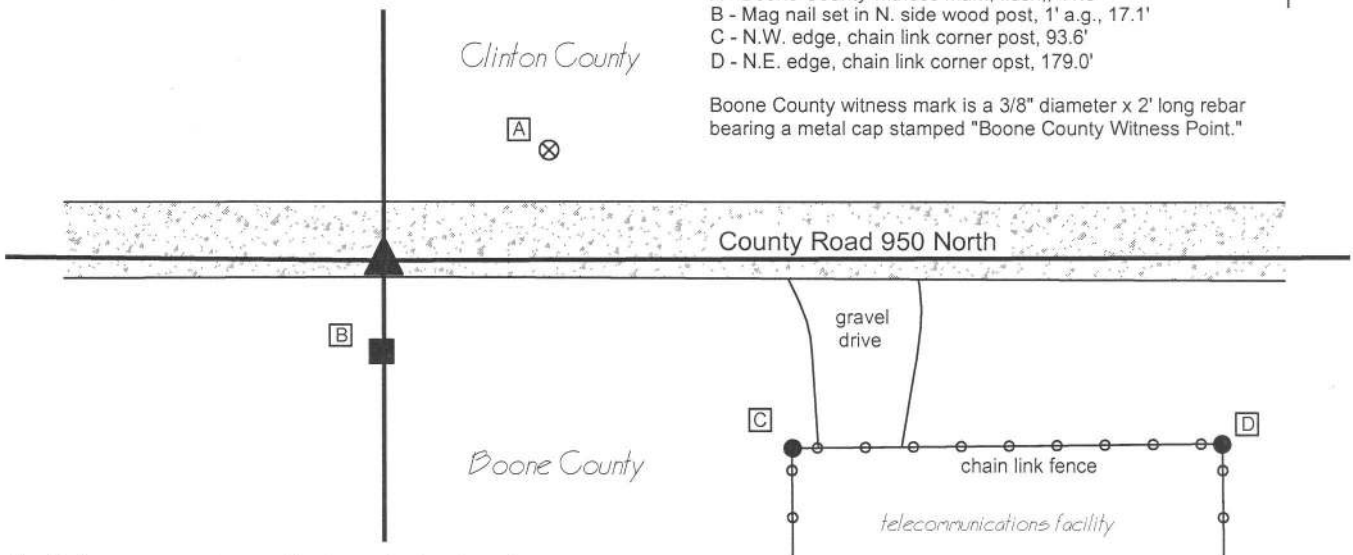
IN02_T20NR1W16_44 IN02_T20NR1W15_36

CORNER WITNESS DETAIL

SCALE 1" = 40' 

- A - Boone County witness mark, flush,, 41.5'
- B - Mag nail set in N. side wood post, 1' a.g., 17.1'
- C - N.W. edge, chain link corner post, 93.6'
- D - N.E. edge, chain link corner opst, 179.0'

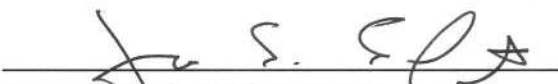
Boone County witness mark is a 3/8" diameter x 2' long rebar bearing a metal cap stamped "Boone County Witness Point."



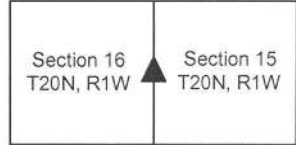
The Harrison monument was set in place of a stone found. No specific descriptions of this corner were found in the BCS Surveyor's Record, though the corner is mentioned as the terminal point for measurements in a record of October 13, 1847. A Clinton County tie card dated October 15, 1981 shows the corner but makes no mention of what monument may have been present. This corner was excavated on September 3, 2014. Prior to excavation, a rebar was found at 1 inch deep in the gravel road and a stone was visible at the surface, slightly above flush. Both of these monuments were towards the south edge of the road but fit well with the longer centerlines to the east and west. Excavation was performed around the stone and it was determined to be 12 inches E-W by 8 inches N-S by 12 inches tall. The bottom 8 inches of the stone were embedded in the clay layer below the road. The top four inches were within the material of the road bed. The stone was generally vertical but appeared to be leaning slightly to the south. The stone was removed and another stone was found partially below and slightly north of the upper stone. The bottom stone was 16 inches N-S by 8 inches E-W by 4 inches tall, fully embedded in the clay. The lower stone was generally oriented in cardinal directions, though cocked slightly clockwise of due N-S. It appeared that the upper stone had most likely been above the lower stone originally but may have been leaned and displaced slightly to the south. Given the position of the stone near the south edge of the road, it is reasonable to conclude that road grading equipment could have disturbed the stone, leaning it to the south. Notably, the lower stone was very near to one rod (16.5 feet) north of post on the south side of the road, a distance found to be a common offset for old posts from section corner stones. The position of the center of the lower stone was held as marking the corner and a Harrison monument was set at this position. Both stones and the rebar were removed during excavation. The rebar had been 0.6 north and 0.6 west of the point held as the corner. This corner was originally established as a wood post in 1829.




 Kenneth E. Hedge, County Surveyor


 James S. Swift, IN LS 20200054
 March 27, 2015

Jackson Twp
 Clinton County
 Washington Twp
 Boone County



PHOTOGRAPHIC DOCUMENTATION

Date of photography: September 3, 2014

The top stone, visible at the surface of the road.
View of County Road 950 North to the west.



The top stone and the post
on the south side of the road.



The lower stone and the post
on the south side of the road.



The lower stone as originally exposed.



For details and documentation, refer to related sheet "Section Corner Record."