

# SECTION CORNER RECORD

## BOONE COUNTY SURVEYOR'S OFFICE

NE 900-300

State Plane grid coordinates NAD83 (CORS96):

North: 1793312.18 East: 3140091.56 (U.S. survey feet)

Type of monument: Harrison, 4" disk 'Section Corner'

Depth: six inches below adjacent gravel road surface

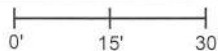
Indiana tie card references:

IN02\_T20NR1E16\_80 IN02\_T20NR1E15\_72

IN02\_T20NR1E21\_08 IN02\_T20NR1E22\_00

### CORNER WITNESS DETAIL

SCALE 1" = 30'



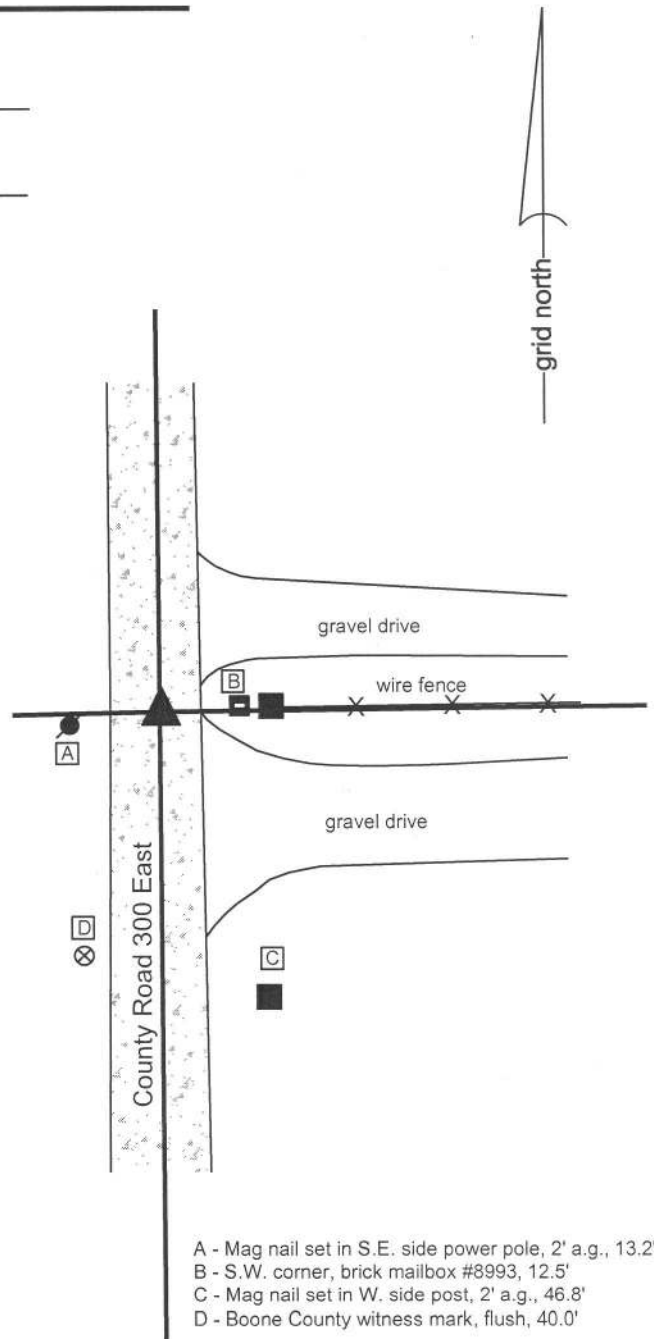
The Harrison monument was set in place of a 5/8 inch diameter rebar found. No specific descriptions of this corner were found in the old BCS Surveyor's Record, though the corner is mentioned as the terminal point for measurements in records of 1891 and 1901. A BCS tie card dated June 5, 1975 states "Stone found 8" deep - set rod."

This corner was excavated on May 22, 2015. Prior to excavation, a 5/8 inch diameter rebar was found at the surface of the gravel road. The top of the rebar was bent, but the primary shaft was straight and vertical yielding minimal uncertainty as to the original position of the monument. A stone was found at 2 inches deep, slightly south and west of the rebar. The stone was vertical and oriented in cardinal directions, being 11 inches tall, 4 inches North-South and 5 inches East-West. However, the stone was found to be entirely within the fill material of the road, with the bottom of the stone at the bottom of the road bed. In almost all cases, corner stones are found embedded in the clay layer below the road. The following features of the stone as a monument are uncertain: As noted, it was in the fill material rather than being embedded in the clay. It was at 2 inches deep whereas the 1975 record states that a stone was found at 8 inches. It did not appear to be the case, nor is it most logical to assume it to be the case, that the road had been scraped to 6 inches lower than its level in 1975. No marks were found on the stone, though given the lack of specific description in the BCS Surveyor's Record, this is not a particularly remarkable fact. It is not clear what happened in 1975. The reference points for the distance ties shown on the 1975 tie card are no longer present.

In the process of excavating and examining many other corners, it has been observed that the statement 'stone found - set rod [or rail]' on BCS tie cards from the late 1960s through the mid 1970s typically indicates that the stone was found, removed and replaced with a rebar or railroad rail. It is not known whether this was the case at this particular corner. It is possible that this stone was found in 1975, removed and reset higher, adjacent to the original position. It is also possible that the stone was left in place as found and the rebar was set next to the stone, though this possibility leaves unexplained the variation of depth of the stone as found and as reported.

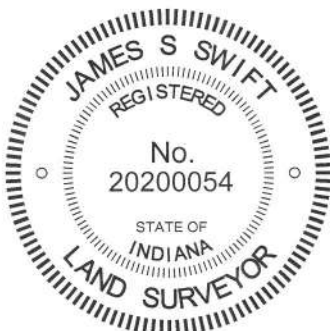
Given the uncertainties with the record and with the depth of the stone being in the fill material of the road and noting that the rebar was situated next to the stone near the northeast corner thereof, the rebar was held as marking the corner. The stone and rebar were both removed and a Harrison monument was set in the position of the vertical shaft of the rebar.

This corner was originally established in 1822.



- A - Mag nail set in S.E. side power pole, 2' a.g., 13.2'
- B - S.W. corner, brick mailbox #8993, 12.5'
- C - Mag nail set in W. side post, 2' a.g., 46.8'
- D - Boone County witness mark, flush, 40.0'

Boone County witness mark is a 3/8" diameter x 2' long rebar bearing a metal cap stamped "Boone County Witness Point."



*Kenneth E. Hedge*  
 Kenneth E. Hedge, County Surveyor

*James S. Swift*  
 James S. Swift, IN LS 20200054  
 March 27, 2015

Clinton Township

|                         |                         |
|-------------------------|-------------------------|
| Section 16<br>T20N, R1E | Section 15<br>T20N, R1E |
| Section 21<br>T20N, R1E | Section 22<br>T20N, R1E |

# SECTION CORNER RECORD

# NE 900-350

## BOONE COUNTY SURVEYOR'S OFFICE

State Plane grid coordinates NAD83 (2011):

North: 1793344.04 East: 3142721.26 (U.S. survey feet)

Type of monument: Harrison, 4" disk 'Section Corner'

Depth: 5 inches above adjacent ground

Indiana tie card references:

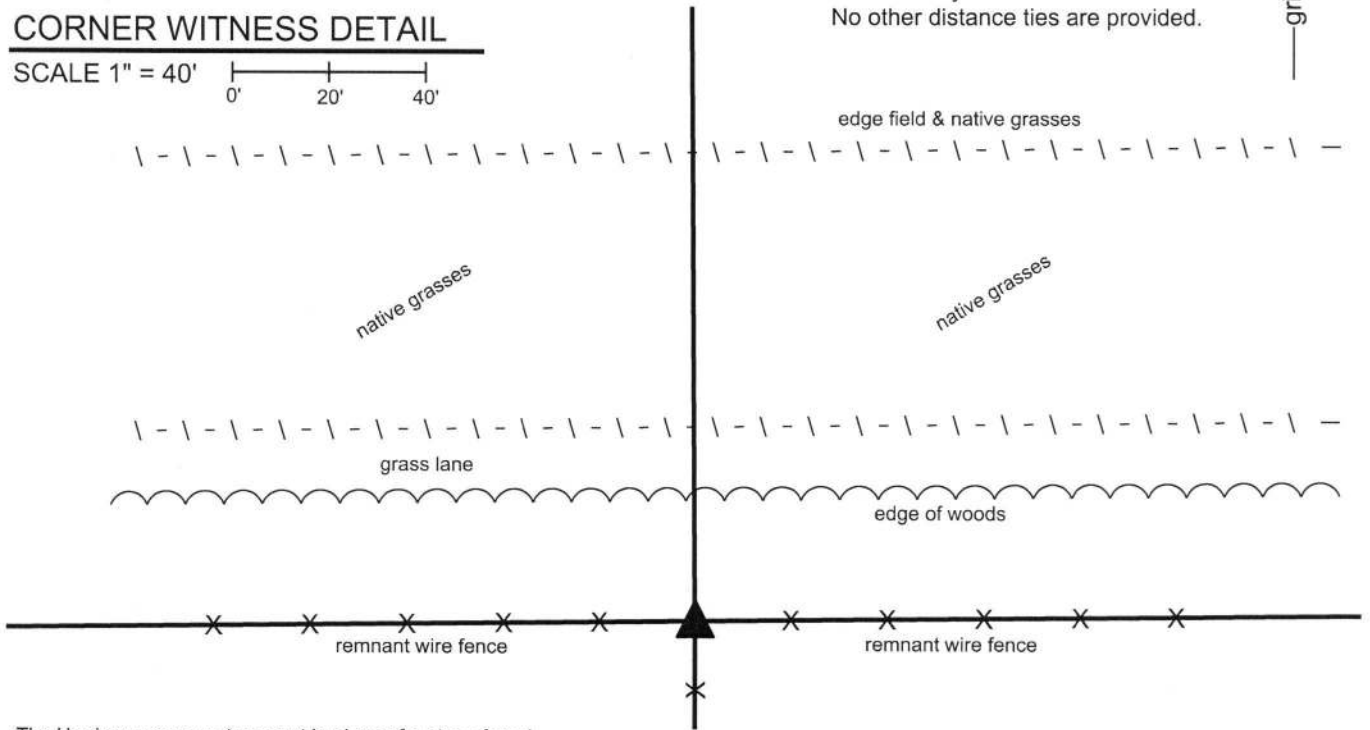
IN02\_T20NR1E15\_76 IN02\_T20NR1E22\_04

The Harrison monument is situated at the north edge of a wood post, 11 inches north of the north edge of the post. The monument is also witnessed by an orange fiberglass lathe 'survey marker.' No other distance ties are provided.



### CORNER WITNESS DETAIL

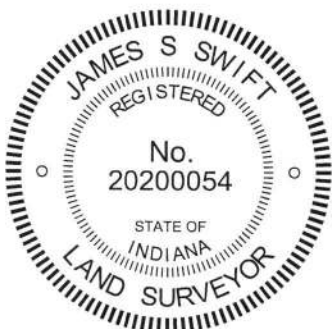
SCALE 1" = 40' 0' 20' 40'



The Harrison monument was set in place of a stone found.

A BCS record of December 2, 1886 states, with respect to this corner, "Re-est. Set Rock Rock 16x12x9 +." No recent BCS tie cards were found referencing this corner.

Reconnaissance for this corner was performed in April, 2014. At that time, an ancient wood corner post was found at the intersection of old fences to the east, west and south. A 5/8 inch rebar bearing the cap "Dodge S0288" was found two feet north of the corner post. More thorough investigation and excavation was performed on April 11, 2018. It was observed that the old corner post had been removed and a newer post installed. The new post is situated slightly south of the position of the old post, as found in 2014. The rebar was still present, though leaning significantly. Excavation in the immediate vicinity of the post revealed the stone called for in the 1886 record at 5 inches deep. The stone was removed and measured and found to exactly match the dimensions called for in the 1886 record. As found, it been vertical, 16 inches tall by 12 inches N-S by 9 inches E-W. The stone had a distinct high point near the west edge of the rock. No specific marks were detected though it is noted that the stone has an extremely rough surface which may mask the mark. The stone appeared to be undisturbed as found and was determined to have been situated at the northeast edge of the original wood post, observed and located in 2014 but removed prior to 2018. A Harrison monument was set in place of the high point of the stone as originally found. The actual stone was embedded in the ground adjacent to and northeast of the Harrison. The stone no longer marks the corner, as the new monument was set in place of the high point of the stone as found. The Dodge rebar, removed during excavation, had been 0.4 foot west and 1.6 feet north of the corner, as established in place of the stone. This corner was originally established as a wood post in 1822.



*Kenneth E. Hedge*  
Kenneth E. Hedge, County Surveyor

*James S. Swift*  
James S. Swift, IN LS 20200054  
April 24, 2018

Clinton Township

Section 15  
T20N, R1E

Section 22  
T20N, R1E

# SECTION CORNER RECORD

NE 900-400

## BOONE COUNTY SURVEYOR'S OFFICE

State Plane grid coordinates NAD83 (CORS96):

North: 1793370.06 East: 3145330.98 (U.S. survey feet)

Type of monument: Harrison, 4" disk 'Section Corner'

Depth: six inches below adjacent gravel road surface

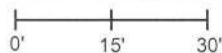
Indiana tie card references:

IN02\_T20NR1E15\_80 IN02\_T20NR1E14\_72

IN02\_T20NR1E22\_08 IN02\_T20NR1E23\_00

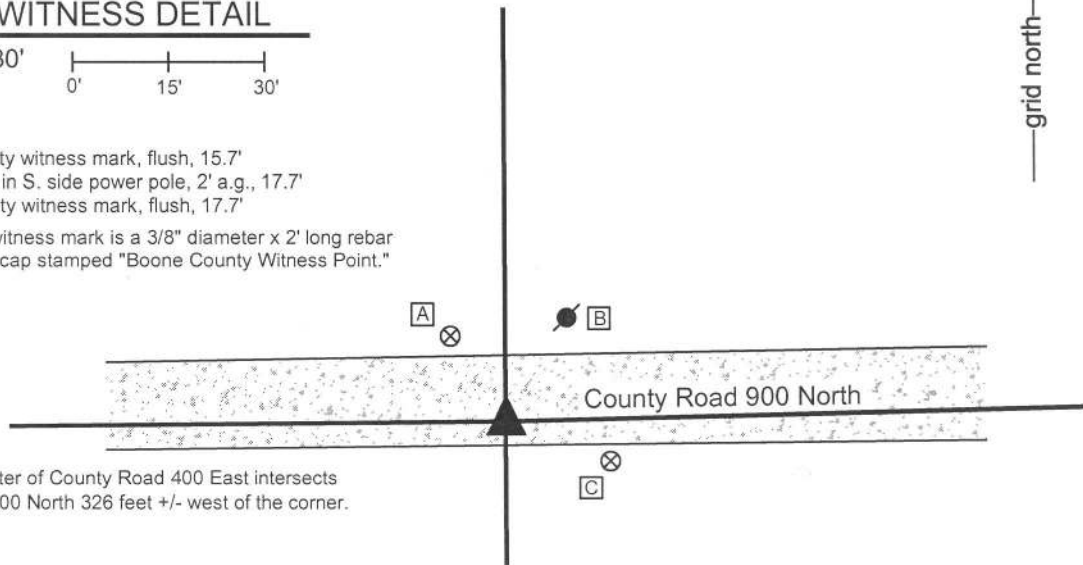
### CORNER WITNESS DETAIL

SCALE 1" = 30'



- A - Boone County witness mark, flush, 15.7'
- B - Mag nail set in S. side power pole, 2' a.g., 17.7'
- C - Boone County witness mark, flush, 17.7'

Boone County witness mark is a 3/8" diameter x 2' long rebar bearing a metal cap stamped "Boone County Witness Point."

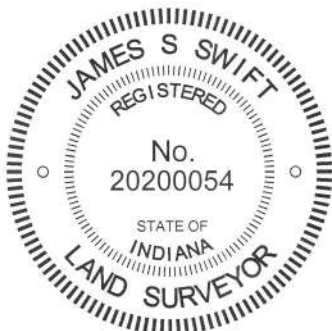


Note: The center of County Road 400 East intersects County Road 900 North 326 feet +/- west of the corner.

The Harrison monument was set in place of a stone found.

A BCS record of December 15, 1882 states, with respect to this corner, "Reestablished - Rock 18x11x8" A BCS tie card dated June 3, 1975 states "No Stone Found - Set Rod."

This corner was excavated on June 11, 2014. Prior to excavation, a 5/8 inch diameter rebar with a red plastic cap stamped "witness point" was found at 1 inch below the surface of the gravel road. The source of this monument is not known and it is not believed to be the same monument referred to as a 'rod' on the 1975 tie card. No reference points remain from the 1975 witness ties. Excavation revealed the stone described in the 1882 record at 8 inches deep, south and west of the rebar. As found, the stone appeared to be leaned to the west. Based on observations of the orientation of stones found at other corners throughout the county, it is expected that a stone set by the County Surveyor in 1882 would have been set vertically. This stone appeared to have been displaced from its vertical orientation, presumably by road grading equipment and partially leaned to the west. A distinct etched "+" mark was visible towards the west side of the stone as found. The stone was stood up in a vertical orientation, leaving the base of the stone in the same position as originally found, embedded in the clay layer below the road. With the stone stood up, the etched "+" mark was on the top of the rock and the rock measured 18 inches tall by 11 inches N-W by 8 inches E-W. As stood vertically, the top of the stone was approximately 4 inches deep and it appears that the stone would have protruded 3 to 4 inches out of the clay into the base of the road bed, with the bottom 14 to 15 inches of the stone embedded in the clay. The stone was situated towards the south edge of the road. This position fit very well with visual observations of the center of the road to the east and west. It is noted that the 1975 tie card shows the set 'rod' as being at 15.5 feet south of the post on the north side of the road. If the rebar found prior to excavation was in the same place as the rod called for in 1975, then the stone, being 1 foot south of the rebar, would have been situated at approximately 16.5 feet (1 rod) south of the post. It has been observed at other corners that the found stone or other ancient monument is often situated at 1 rod from an adjacent corner post. Both the rebar and the stone were removed and a Harrison monument was set in the position of the etched "+" on the top of the rock, as stood in a vertical orientation. The rebar had been approximately 1 foot north and 0.4 foot east of this point. This corner was originally established as a wood post in 1822.



*Kenneth E. Hedge*  
 Kenneth E. Hedge, County Surveyor

*James S. Swift*  
 James S. Swift, IN LS 20200054  
 March 27, 2015

Clinton Township

|                         |                         |
|-------------------------|-------------------------|
| Section 15<br>T20N, R1E | Section 14<br>T20N, R1E |
| Section 22<br>T20N, R1E | Section 23<br>T20N, R1E |



PHOTOGRAPHIC DOCUMENTATION

Date of photography: June 11, 2014

The stone as originally found, leaned substantially toward the west.



View from the northeast showing the stone stood vertically in the position believed most likely prior to it being leaned toward the west.



View from above and north, showing the stone vertical and washed. Note the etched + on top.



View from the west, looking across the stone and east along County Road 900 North.



View from the south, showing the stone vertical and washed.



For details and documentation, refer to related sheet "Section Corner Record."

# SECTION CORNER RECORD

NE 950-300

## BOONE COUNTY SURVEYOR'S OFFICE

State Plane grid coordinates NAD83 (2011):  
North: 1795942.54 East: 3140073.11 (U.S. survey feet)

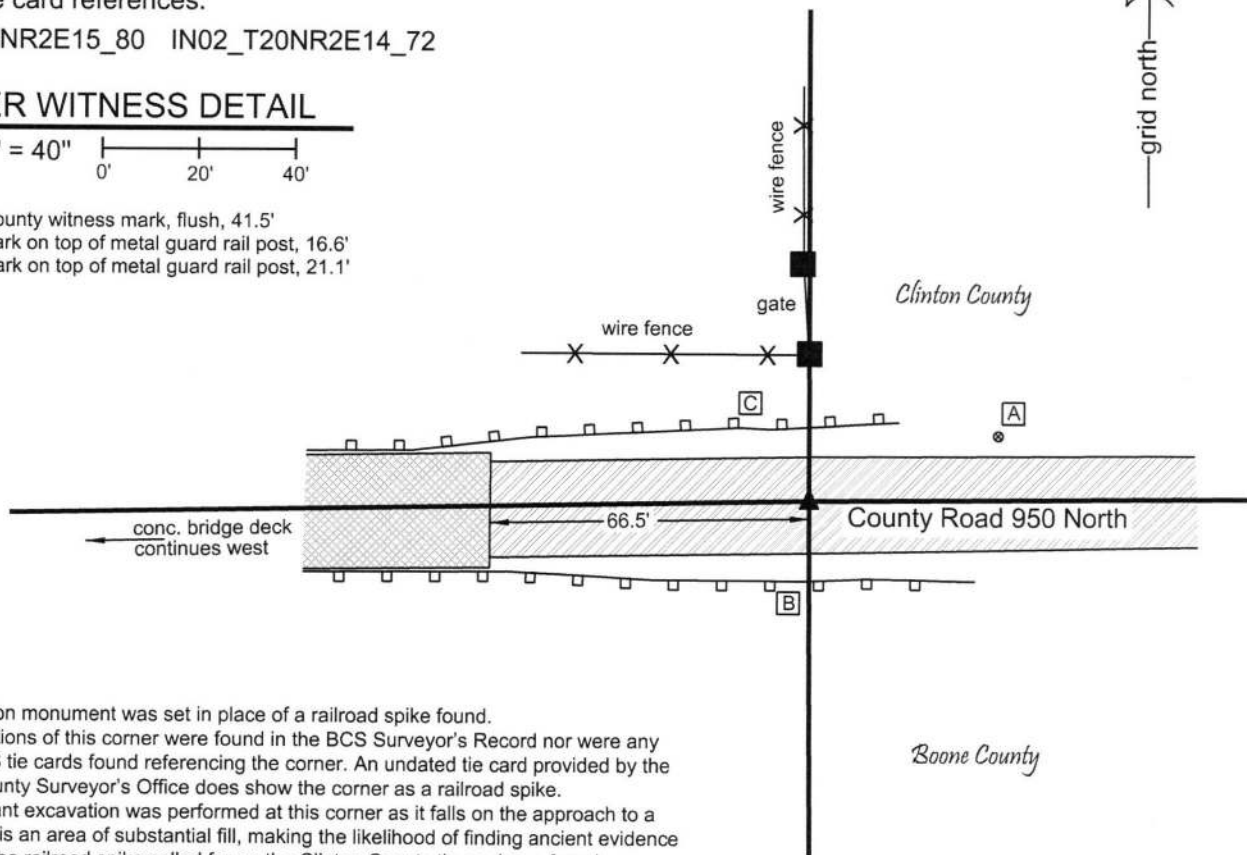
Type of monument: Harrison, 4" disk 'Section Corner'  
Depth: One inch below adjacent road surface

Indiana tie card references:  
IN02\_T20NR2E15\_80 IN02\_T20NR2E14\_72

### CORNER WITNESS DETAIL

SCALE 1" = 40"  
0' 20' 40'

- A - Boone County witness mark, flush, 41.5'
- B - Chisel Mark on top of metal guard rail post, 16.6'
- C - Chisel Mark on top of metal guard rail post, 21.1'



The Harrison monument was set in place of a railroad spike found. No descriptions of this corner were found in the BCS Surveyor's Record nor were any recent BCS tie cards found referencing the corner. An undated tie card provided by the Clinton County Surveyor's Office does show the corner as a railroad spike. No significant excavation was performed at this corner as it falls on the approach to a bridge and is an area of substantial fill, making the likelihood of finding ancient evidence minimal. The railroad spike called for on the Clinton County tie card was found undisturbed. The spike fits with local evidence of the corner in the form of the east-west roadway and the post on the north side of the road. It also fits well with respect to proximate corners. The plans for the adjacent bridge were not found. The Boone County Highway Department does not have the plans and Clinton County did not provide access to them, if they do have them. The railroad spike was accepted as providing the best available evidence of the corner and was held as marking the corner. On August 12, 2016, the railroad spike was removed and replaced with a Harrison monument in the same position. This corner was originally established as a wood post in 1822.

*Kenneth E. Hedge*  
Kenneth E. Hedge, County Surveyor

*James S. Swift*  
James S. Swift, IN LS 20200054  
March 23, 2017



Kirclin Township  
Clinton County  
Clinton Township  
Boone County

|                         |                         |
|-------------------------|-------------------------|
| Section 16<br>T20N, R1E | Section 15<br>T20N, R1E |
|-------------------------|-------------------------|



# SECTION CORNER RECORD

NE 950-350

## BOONE COUNTY SURVEYOR'S OFFICE

State Plane grid coordinates NAD83 (CORS96):

North: 1795964.36 East: 3142702.07 (U.S. survey feet)

Type of monument: Harrison, 4" disk 'Section Corner'

Depth: six inches below adjacent gravel road surface

Indiana tie card references:

IN02\_T20NR1E15\_40

### CORNER WITNESS DETAIL

SCALE 1" = 30'

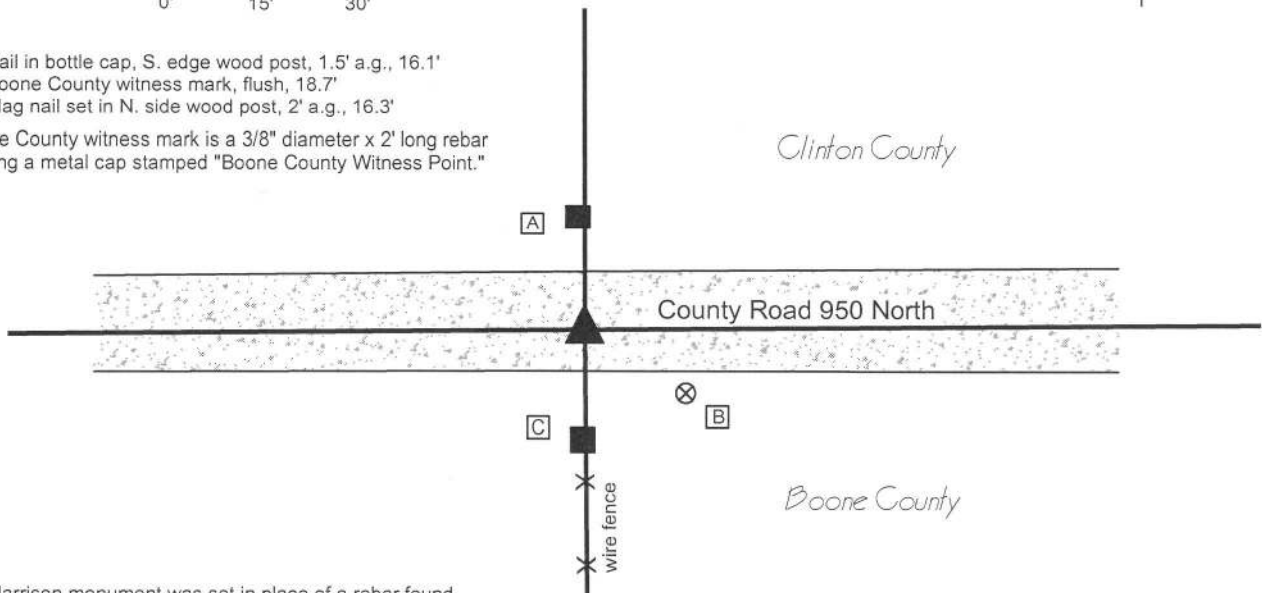


A - Nail in bottle cap, S. edge wood post, 1.5' a.g., 16.1'

B - Boone County witness mark, flush, 18.7'

C - Mag nail set in N. side wood post, 2' a.g., 16.3'

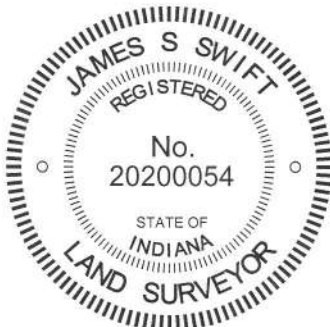
Boone County witness mark is a 3/8" diameter x 2' long rebar bearing a metal cap stamped "Boone County Witness Point."



The Harrison monument was set in place of a rebar found.

This corner is not an original federal corner. The corner is shown in a record of November 15, 1846 in the BCS Surveyor's Record, though no specific description of the a monument is mentioned in that record. A later entry dated December 2, 1886 states "Center Sec. stone, 12,12,12, a cherry 10" bears...." A BCS tie card dated June 5, 1975 states "Stone Found - Set Rod."

This corner was excavated on August 21, 2014. Prior to excavation, a 1/2 inch diameter rebar was found at 3 inches deep in the gravel road. The rebar fit with the 1975 distance ties and is believed to be the 'rod' called for on that document. Excavation revealed a stone found 1.2 feet south and 2.8 feet west of the rebar. The stone was found at 2 inches deep and was measured to be 14 inches E-W by 12 inches N-S by 9 inches tall. The stone did not match the dimensions described in the 1846 record and was situated entirely within the fill material of the road bed, rather than being embedded in the clay layer below the road bed, as is typical of corner stones. The reference on the 1975 tie card of 'Stone Found - Set Rod' is interpreted to mean that a stone was found, removed and replaced with a rebar, as has been found to be the case at many other corners referenced by tie cards from that era for which the wording is similar. It is noted that the rebar fit well with the local evidence being in the approximate center of the east-west roadway, in line with the fence to the south and slightly east of the post to the north. Given the uncertainties with the stone found during excavation, being situated within the fill material and not matching the record dimensions, and given the harmony of the rebar with the ties and evidence, it was concluded most likely that the record stone was found in 1975, removed and replaced with the rebar. The rebar was accepted as providing the best available evidence of the corner. The found stone and rebar were both removed and the rebar was replaced with a Harrison monument set in the same horizontal position.

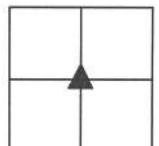


*Kenneth E. Hedge*  
 Kenneth E. Hedge, County Surveyor

*James S. Swift*  
 James S. Swift, IN LS 20200054  
 March 27, 2015

Section 15  
T20N, R1E

Kirklin Township  
 Clinton County  
 Clinton Township  
 Boone County



# SECTION CORNER RECORD

# NE 950-400

## BOONE COUNTY SURVEYOR'S OFFICE

State Plane grid coordinates NAD83 (2011):

North: 1795983.95 East: 3145326.08 (U.S. survey feet)

Type of monument: Harrison, 4" disk 'Section Corner'

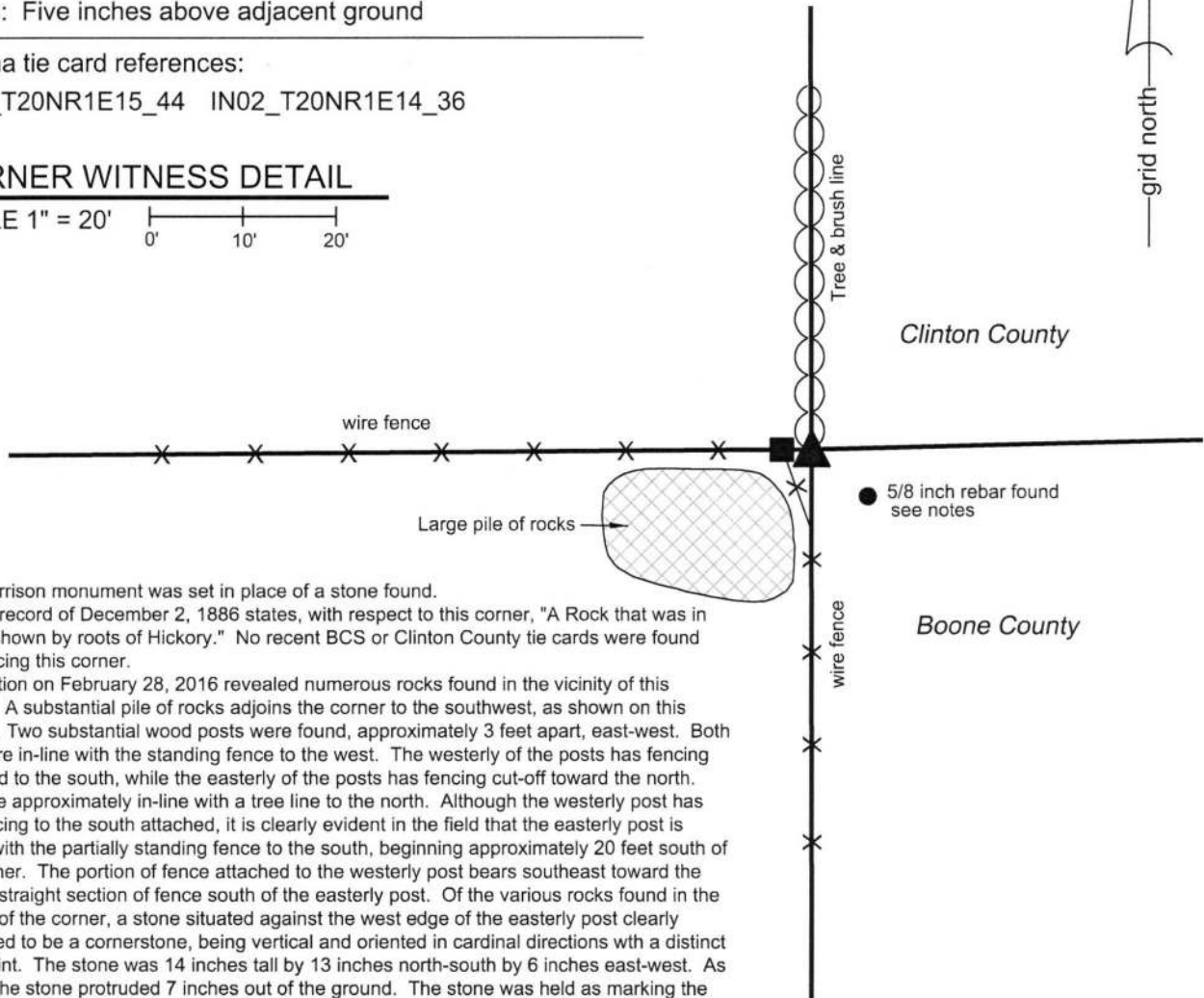
Depth: Five inches above adjacent ground

Indiana tie card references:

IN02\_T20NR1E15\_44 IN02\_T20NR1E14\_36

### CORNER WITNESS DETAIL

SCALE 1" = 20'



The Harrison monument was set in place of a stone found.

A BCS record of December 2, 1886 states, with respect to this corner, "A Rock that was in place, shown by roots of Hickory." No recent BCS or Clinton County tie cards were found referencing this corner.

Excavation on February 28, 2016 revealed numerous rocks found in the vicinity of this corner. A substantial pile of rocks adjoins the corner to the southwest, as shown on this sketch. Two substantial wood posts were found, approximately 3 feet apart, east-west. Both posts are in-line with the standing fence to the west. The westerly of the posts has fencing attached to the south, while the easterly of the posts has fencing cut-off toward the north. Both are approximately in-line with a tree line to the north. Although the westerly post has the fencing to the south attached, it is clearly evident in the field that the easterly post is in-line with the partially standing fence to the south, beginning approximately 20 feet south of the corner. The portion of fence attached to the westerly post bears southeast toward the longer, straight section of fence south of the easterly post. Of the various sections found in the vicinity of the corner, a stone situated against the west edge of the easterly post clearly appeared to be a cornerstone, being vertical and oriented in cardinal directions with a distinct high point. The stone was 14 inches tall by 13 inches north-south by 6 inches east-west. As found, the stone protruded 7 inches out of the ground. The stone was held as marking the corner. The stone was removed and replaced with a Harrison monument in the same position as the top, high point of the stone as found.

A 5/8 inch rebar with no cap was also found nearby, 5 feet south and 6 feet east of the corner. It is not known whether this rebar is intended to mark the corner or whether it is intended to act as a random control point. The position of the rebar does not fit with the obvious local evidence of the corner in the form of the fences, posts and stone. The rebar was left in place, though being situated on the edge of the area tilled for crops, it is not likely to remain stable in that position, due to the likelihood of being disturbed by agricultural machinery.

This corner was originally established as a wood post in 1822.



Kenneth E. Hedge, County Surveyor

James S. Swift, IN LS 20200054  
March 7, 2018

Kirclin Township  
Clinton County  
Clinton Township  
Boone County

|                         |                         |
|-------------------------|-------------------------|
| Section 15<br>T20N, R1E | Section 14<br>T20N, R1E |
|-------------------------|-------------------------|