

SECTION CORNER RECORD

NE 300-900

BOONE COUNTY SURVEYOR'S OFFICE

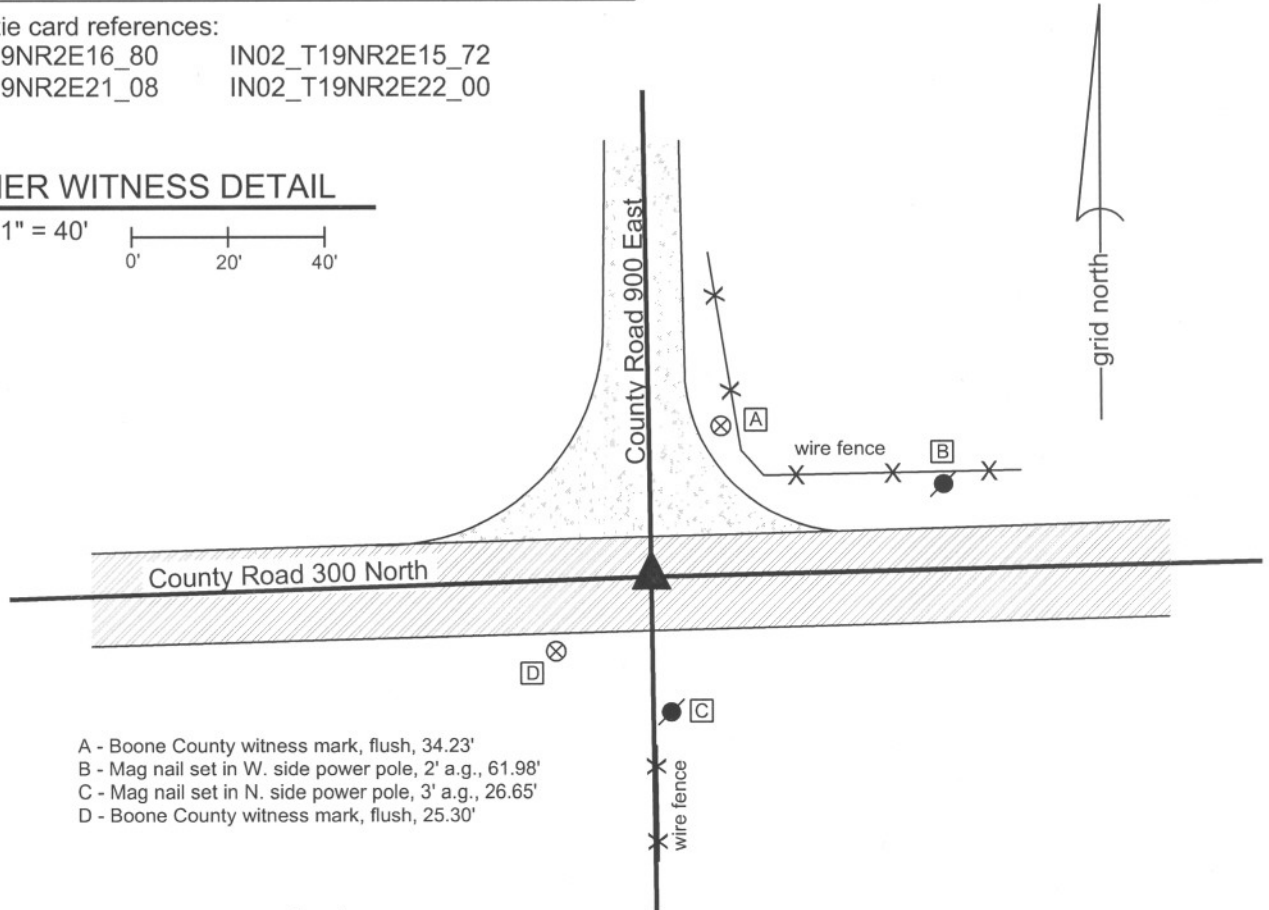
State Plane grid coordinates NAD83 (NSRS 2007):
North: 1762420.07 East: 3172276.24 (U.S. survey feet)

Type of monument: Harrison, 4" disk 'Section Corner'
Depth: two inches below adjacent road surface

Indiana tie card references:
IN02_T19NR2E16_80 IN02_T19NR2E15_72
IN02_T19NR2E21_08 IN02_T19NR2E22_00

CORNER WITNESS DETAIL

SCALE 1" = 40'

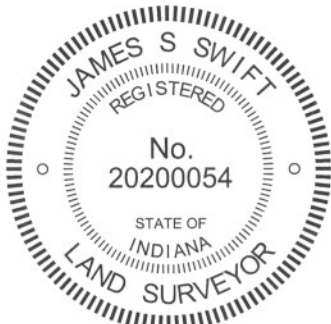


- A - Boone County witness mark, flush, 34.23'
- B - Mag nail set in W. side power pole, 2' a.g., 61.98'
- C - Mag nail set in N. side power pole, 3' a.g., 26.65'
- D - Boone County witness mark, flush, 25.30'

The Harrison monument was set over a stone found.

A BCS record of April 23, 1868 states "Reestablished by producing or extending the corrected line A, H, g and from a marked tree on the line G to F and some appearance of roots of one tree. Set a Rock 21.12 by 9 in. marked +." Field notes from an unknown source dated July 1980 state "No stone set I.P." This corner was excavated on September 9, 2010. Prior to excavation a mag nail was visible approximately 1 inch below the surrounding asphalt. A one inch diameter rebar, 13 inches long, was found directly below the mag nail. Fragments of a wood stake were found at 12 inches deep, several feet north of the rebar. The record stone was found below the wood stake. The stone is vertical, fully embedded in the clay with the top of the stone at the top of the clay layer below the road. The stone measures 12 inches E-W by 9 inches N-S with 15 inches exposed. An etched + is clearly visible on the top, of the stone. The rock does not have a uniform shape on the top and the etched "+" is not at the high point, but is at the approximate of the overall top of the stone. The high point of the stone, at the east edge of the top is 16 inches deep and the etched "+" is at 18 inches deep, as the top slopes down towards the west. The stone was left in place and the Harrison monument was set directly over the etched "+". The mag nail and rebar, both removed during excavation, had been 3.9 feet south and 0.7 foot east of the etched "+" on the stone.

This corner was originally established as a wood post in July, 1821.



Kenneth E. Hedge
Kenneth E. Hedge, County Surveyor

James S. Swift
James S. Swift, IN LS 20200054
July 25, 2011

Marion Twp

Section 16 T19N, R2E	Section 15 T19N, R2E
Section 21 T19N, R2E	Section 22 T19N, R2E

PHOTOGRAPHIC DOCUMENTATION

Date of photography: September 2, 2010

Some fragments of the wood stake above the stone.



The stone as first exposed.



The stone being exposed. Further pictures are not available due to camera failure during excavation.



For details and documentation, refer to related sheet "Section Corner Record."

SECTION CORNER RECORD

NE 300-950

BOONE COUNTY SURVEYOR'S OFFICE

State Plane grid coordinates NAD83 (CORS96):

North: 1762481.05 East: 3174932.50 (U.S. survey feet)

Type of monument: Harrison, 4" disk 'Section Corner'

Depth: One inch below adjacent road surface

Indiana tie card references:

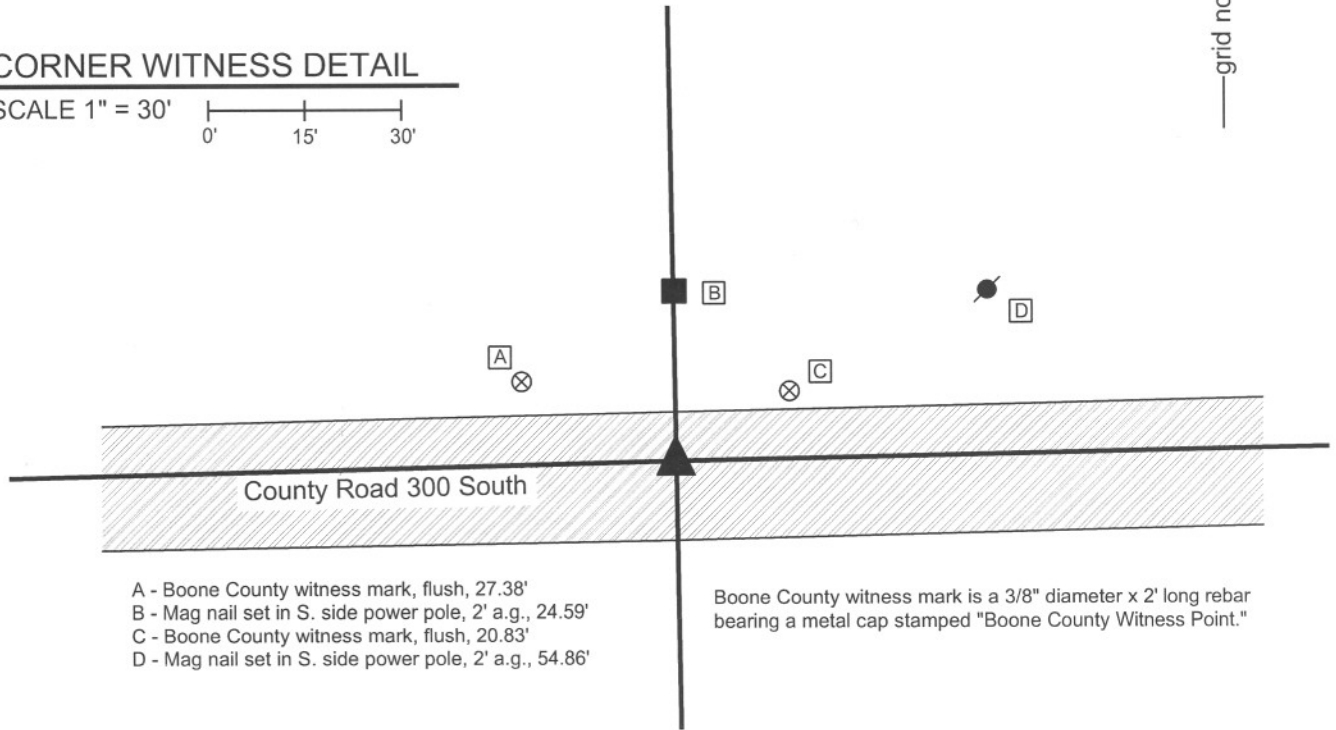
IN02_T19NR2E15_76

IN02_T19NR2E22_04



CORNER WITNESS DETAIL

SCALE 1" = 30'
0' 15' 30'



- A - Boone County witness mark, flush, 27.38'
- B - Mag nail set in S. side power pole, 2' a.g., 24.59'
- C - Boone County witness mark, flush, 20.83'
- D - Mag nail set in S. side power pole, 2' a.g., 54.86'

Boone County witness mark is a 3/8" diameter x 2' long rebar bearing a metal cap stamped "Boone County Witness Point."

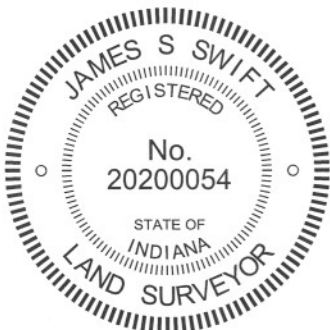
The Harrison monument was set in place of a rebar found.

No specific descriptions of this corner were found in the BCS Surveyor's Record. The corner is mentioned as the terminal point for measurements in a record from 1868. No recent BCS tie cards were found referencing this corner.

This corner was excavated on October 26, 2011. Prior to excavation a 5/8 inch diameter rebar was found at 2 inches deep in a hole in the asphalt. Excavation revealed no further evidence of the corner in an area of excavation extended 2 feet north, 4 feet east, 4.5 feet south and 2.5 feet west of the rebar. The clay layer below the road begins at 18 to 20 inches deep. Excavation was performed to a minimum of 22 inches.

The rebar fits with local evidence of the corner in the form of being in the east west road at the southerly extension of an old north-south fence. The rebar was slightly north of the road, but no better evidence of the corner was found closer to the center of the road. The rebar was accepted as the best available evidence of the corner. The rebar was removed and replaced with a Harrison monument in the same position.

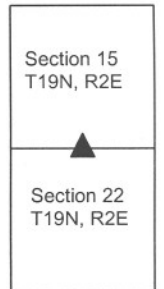
This corner was originally established as a wood post in July, 1821.



Kenneth E. Hedge
Kenneth E. Hedge, County Surveyor

James S. Swift
James S. Swift, IN LS 20200054
March 1, 2012

Marion Twp



SECTION CORNER RECORD

NE 300-1000

BOONE COUNTY SURVEYOR'S OFFICE

State Plane grid coordinates NAD83 (2011):

North: 1762530.92 East: 3177594.07 (U.S. survey feet)

Type of monument: Harrison, 4" disk 'Section Corner'

Depth: flush with adjacent road surface

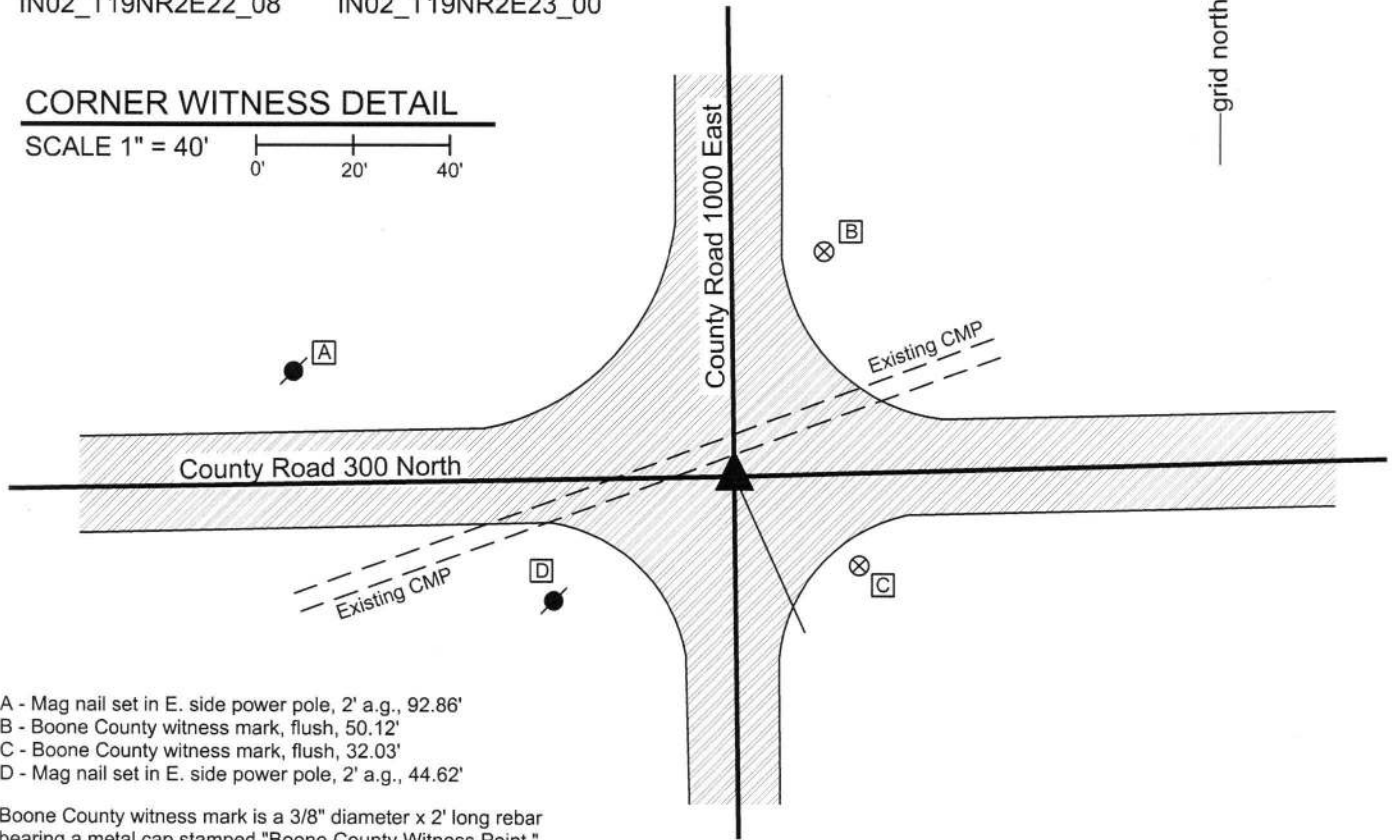
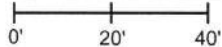
Indiana tie card references:

IN02_T19NR2E15_80 IN02_T19NR2E14_72

IN02_T19NR2E22_08 IN02_T19NR2E23_00

CORNER WITNESS DETAIL

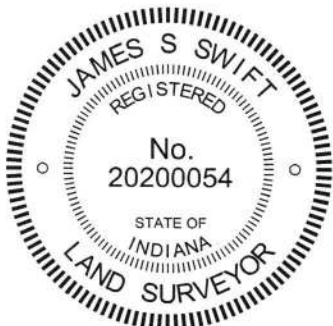
SCALE 1" = 40'



- A - Mag nail set in E. side power pole, 2' a.g., 92.86'
- B - Boone County witness mark, flush, 50.12'
- C - Boone County witness mark, flush, 32.03'
- D - Mag nail set in E. side power pole, 2' a.g., 44.62'

Boone County witness mark is a 3/8" diameter x 2' long rebar bearing a metal cap stamped "Boone County Witness Point."

The Harrison monument was set in the same position as a Harrison monument previously set. This corner is dominated by the presence of a large culvert pipe crossing the intersection from the southwest to the northeast quadrant, the installation of which would have destroyed any ancient evidence or monumentation at the actual corner. A witness stone described in an 1862 record as being southeast of the corner was not found. In 2011, a P.K. nail found at the center of the intersection was replaced with a Harrison Monument in the same position. Subsequently, the culvert pipe was replaced by the Boone County Highway Department, during which process the Harrison monument was removed. This monument was replaced with another Harrison monument in October, 2015.



Kenneth E. Hedge
Kenneth E. Hedge, County Surveyor

James S. Swift
James S. Swift, IN LS 20200054
March 23, 2017

Marion Township

Section 15 T19N, R2E	Section 14 T19N, R2E
Section 22 T19N, R2E	Section 23 T19N, R2E

SECTION CORNER RECORD

NE 350-900

BOONE COUNTY SURVEYOR'S OFFICE

State Plane grid coordinates NAD83 (CORS 96):

North: 1765071.79 East: 3172236.86 (U.S. survey feet)

Type of monument: Harrison, 4" disk 'Section Corner'

Depth: six inches below adjacent gravel road surface

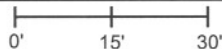
Indiana tie card references:

IN02_T19NR2E15_36

IN02_T19NR2E16_44

CORNER WITNESS DETAIL

SCALE 1" = 30'



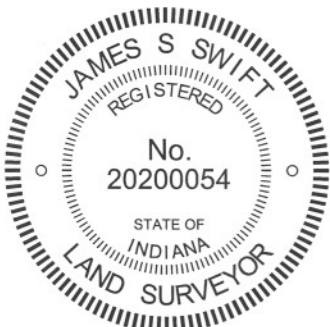
- A - Boone County witness mark, flush, 23.78'
- B - Mag nail set in N. side power pole, 3' a.g., 29.44'
- C - Boone County witness mark, flush, 52.49'

Boone County witness mark is a 3/8" diameter x 2' long rebar bearing a metal cap stamped "Boone County Witness Point."

The harrison monument was set in place of a stone found.
 A BCS record of April 22, 1868 states "Reestablished. Set a Rock 15.8 by 8 in. Marked + on top and small one (three cornered) 3-1/2.2.1-1/2 place under it." A undated BCS tie card shows the corner as a rebar with no documentation of source.
 This corner was excavated on November 16, 2011. Prior to excavation a 5/8 inch diameter rebar was found at the surface, bent slightly towards the south. Excavation revealed that the rebar was set along the north edge of the stone described in the 1868 record. The rock was 15 inches tall by 8 inches N-S by 8 inches E-W. A small triangular rock was found under the larger rock. The triangular rock fits the description of "three cornered" but does not match the dimensions. Measuring the rock as a triangle, it is 3 1/2 inches on the base by 5 inches tall by 1 3/4 inches thick. Perhaps the transcription of the field notes from 1868 altered the "5" dimension to "2." In any case, the record stone from 1868 was found and held as marking the corner. The stone was nearly at the surface, though still well embedded in the clay layer below the thin road bed. No specific marks were found. Any mark on top would likely have been scraped of by the blade of a road grader, which must surely have scraped over the rock repeatedly. The stone and rebar were both removed and a harrison monument was set in the position of the top of the stone.
 This corner was originally established as a wood post in July, 1821.



County Road 900 East



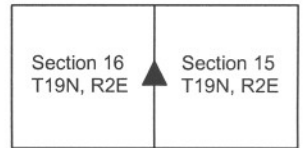
Kenneth E. Hedge

 Kenneth E. Hedge, County Surveyor

James S. Swift

 James S. Swift, IN LS 20200054
 March 1, 2012

Marion Township



PHOTOGRAPHIC DOCUMENTATION
Date of photography: November 16, 2011

View of the stone and bent rebar from the north and above.



View of the stone displaced from the road bed.



View from the south looking across the stone and rebar and north along County Road 900 East.



View of the stone removed from the road bed.



The stone stood up in the orientation in which it was found.



For details and documentation, refer to related sheet "Section Corner Record."

SECTION CORNER RECORD

NE 350-1000

BOONE COUNTY SURVEYOR'S OFFICE

State Plane grid coordinates NAD83 (CORS96):

North: 1765179.68 East: 3177551.48 (U.S. survey feet)

Type of monument: Harrison, 4" disk 'Section Corner'

Depth: flush with adjacent road surface

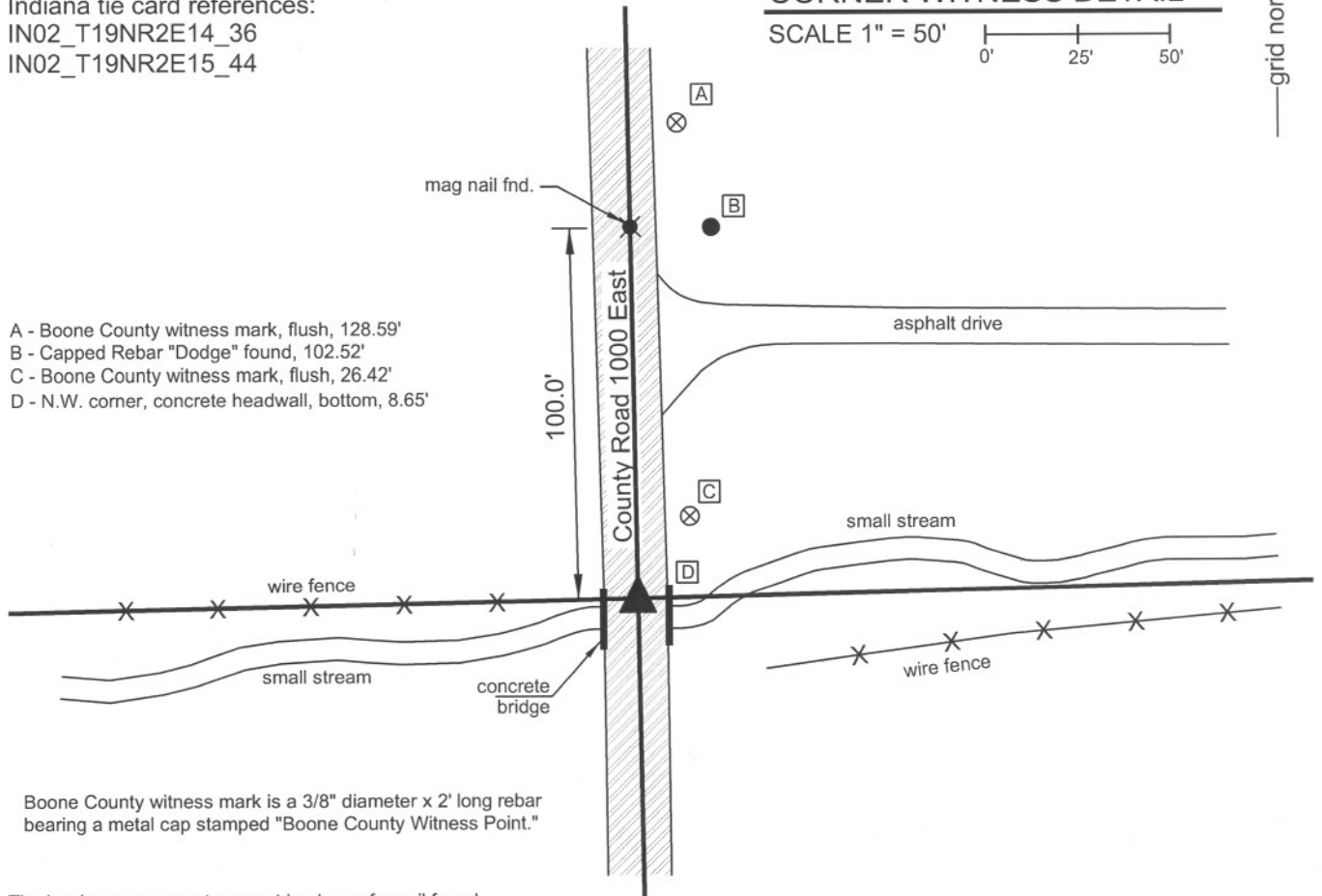
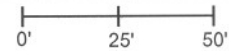
Indiana tie card references:

IN02_T19NR2E14_36

IN02_T19NR2E15_44

CORNER WITNESS DETAIL

SCALE 1" = 50'



- A - Boone County witness mark, flush, 128.59'
- B - Capped Rebar "Dodge" found, 102.52'
- C - Boone County witness mark, flush, 26.42'
- D - N.W. corner, concrete headwall, bottom, 8.65'

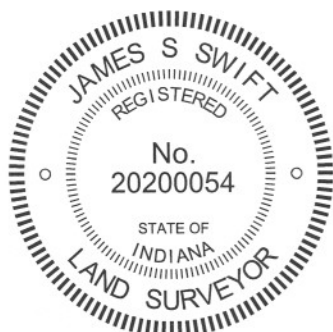
Boone County witness mark is a 3/8" diameter x 2' long rebar bearing a metal cap stamped "Boone County Witness Point."

The harrison monument was set in place of a nail found.

A BCS record of April 23, 1868 states "Reestablished from roots of trees. Set Rock 15.8. by 7 marked +." No recent BCS tie cards were found referencing this corner.

This corner was excavated on November 21, 2011. The corner falls in a concrete bridge over a small stream. There was no expectation that the record stone may be found. The description of the adjoining parcel on the northeast, recorded as Instrument 200500512566 in the Boone County Recorder's Office, calls for the corner and a west line of 100.00 feet. A mag nail was found in the center of County Road 1000 East in line with a vinyl fence to the east. A faint reading was detected on a magnetic locator at a point 100 feet south of the nail. Excavation of a small hole centered on this reading revealed a surveyor's type nail at 3.5 inches deep, below the asphalt and driven into the concrete bridge. The nail fits well with local evidence of the corner, being in the center of the N-S road and falling at the easterly extension of the old fence to the west and at the westerly extension of that portion of the fence to the east, beyond where the fence runs along the south edge of the small stream. The nail was held as marking the corner. A harrison monument was set at the position of the nail

This corner was originally established as a wood post in July, 1821.



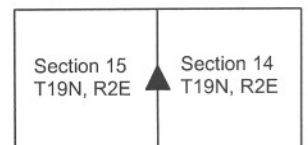
Kenneth E. Hedge

 Kenneth E. Hedge, County Surveyor

James S. Swift

 James S. Swift, IN LS 20200054
 March 1, 2012

Marion Township



SECTION CORNER RECORD

NE 400-900

BOONE COUNTY SURVEYOR'S OFFICE

State Plane grid coordinates NAD83 (NSRS 2007):

North: 1767722.61 East: 3172196.32 (U.S. survey feet)

Type of monument: Harrison, 4" disk 'Section Corner'

Depth: Six inches below the gravel road surface.

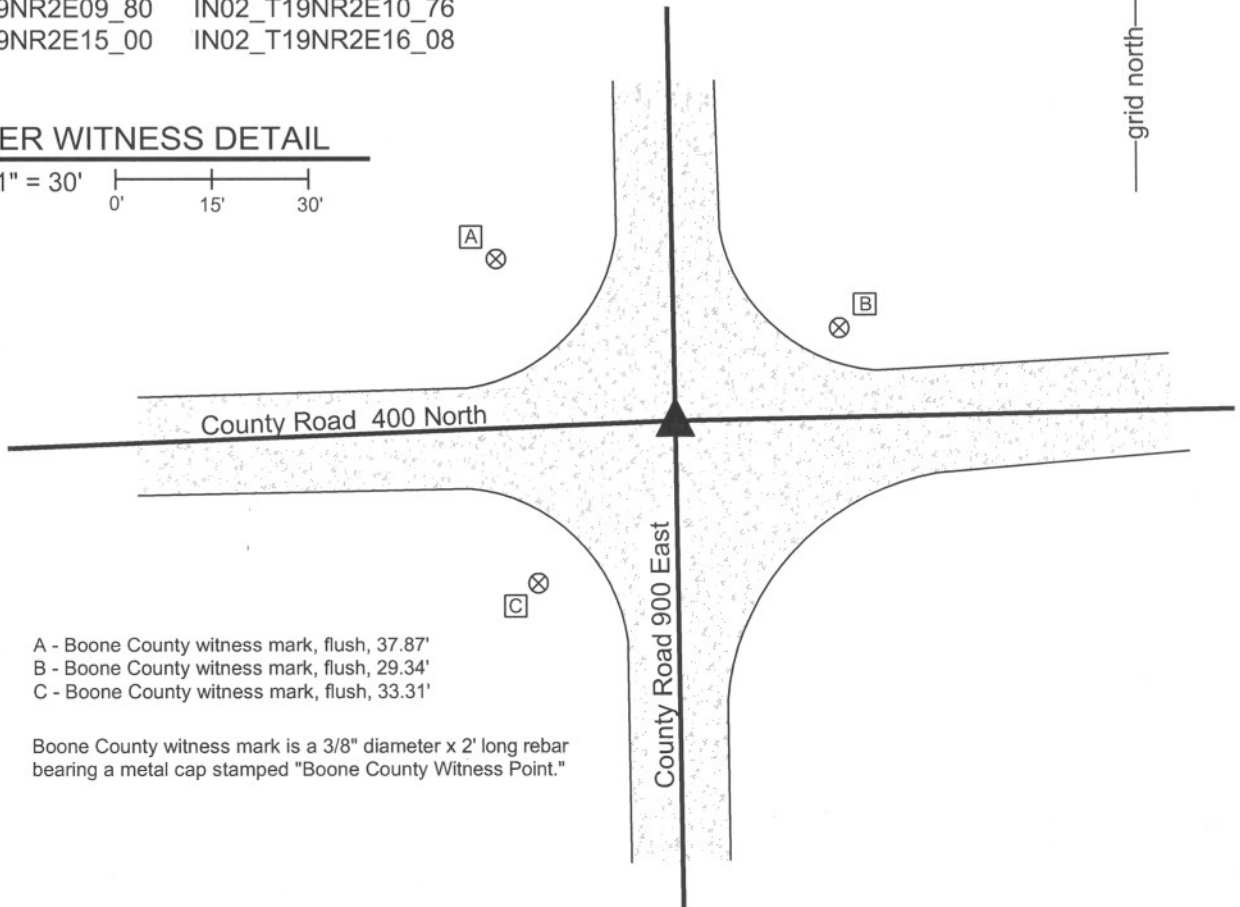
Indiana tie card references:

IN02_T19NR2E09_80 IN02_T19NR2E10_76

IN02_T19NR2E15_00 IN02_T19NR2E16_08

CORNER WITNESS DETAIL

SCALE 1" = 30'



- A - Boone County witness mark, flush, 37.87'
- B - Boone County witness mark, flush, 29.34'
- C - Boone County witness mark, flush, 33.31'

Boone County witness mark is a 3/8" diameter x 2' long rebar bearing a metal cap stamped "Boone County Witness Point."

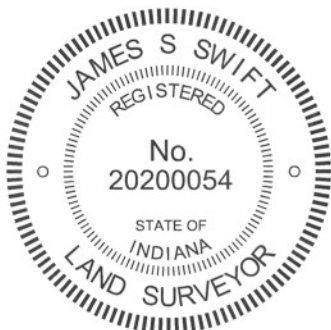
The harrison monument was set over a stone found.

A BCS record of December 24, 1867 states "Reestablished from stumps of both trees. Set Rock 21.17 by 15 in. Marked + on top." No recent BCS tie cards were found referencing this corner.

This corner was excavated on August 24, 2010. Prior to excavation a 5/8 inch diameter rebar was found at 3 inches deep, bent considerably.

Excavation revealed the record stone found at 22 inches deep. The stone is embedded in the clay layer below the road. With 12 inches exposed, the stone measures 14 inches E-W by 17 inches N-S and remains firmly embedded in the clay. The stone is of a soft sandstone type material and the top of the stone was marred during excavation. No specific marks were found on the stone, but a mark on the top of the stone may have been obliterated during excavation or at some previous time, given the softness of the material. The harrison monument was set over the top, center of the stone. The rebar, removed during excavation, had been 1.1 feet west and 0.7 foot south of this point. The source of the rebar is not known.

This corner was originally established as a wood post in July, 1821.



Kenneth E. Hedge
 Kenneth E. Hedge, County Surveyor

James S. Swift
 James S. Swift, IN LS 20200054
 July 25, 2011

Marion Township

Section 9 T19N, R2E	Section 10 T19N, R2E
Section 16 T19N, R2E	Section 15 T19N, R2E

PHOTOGRAPHIC DOCUMENTATION

Date of photography: August 24, 2010

View of the stone as first exposed.



View of the stone from above.



View of the stone from the east.



View from above the stone, looking west along County Road 400 North.



For details and documentation, refer to related sheet "Section Corner Record."

SECTION CORNER RECORD

NE 400-950

BOONE COUNTY SURVEYOR'S OFFICE

State Plane grid coordinates NAD83 (NSRS 2007):

North: 1767777.19 East: 3174850.54 (U.S. survey feet)

Type of monument: Harrison, 4" disk 'Section Corner'

Depth: six inches below the gravel road surface.

Indiana tie card references:

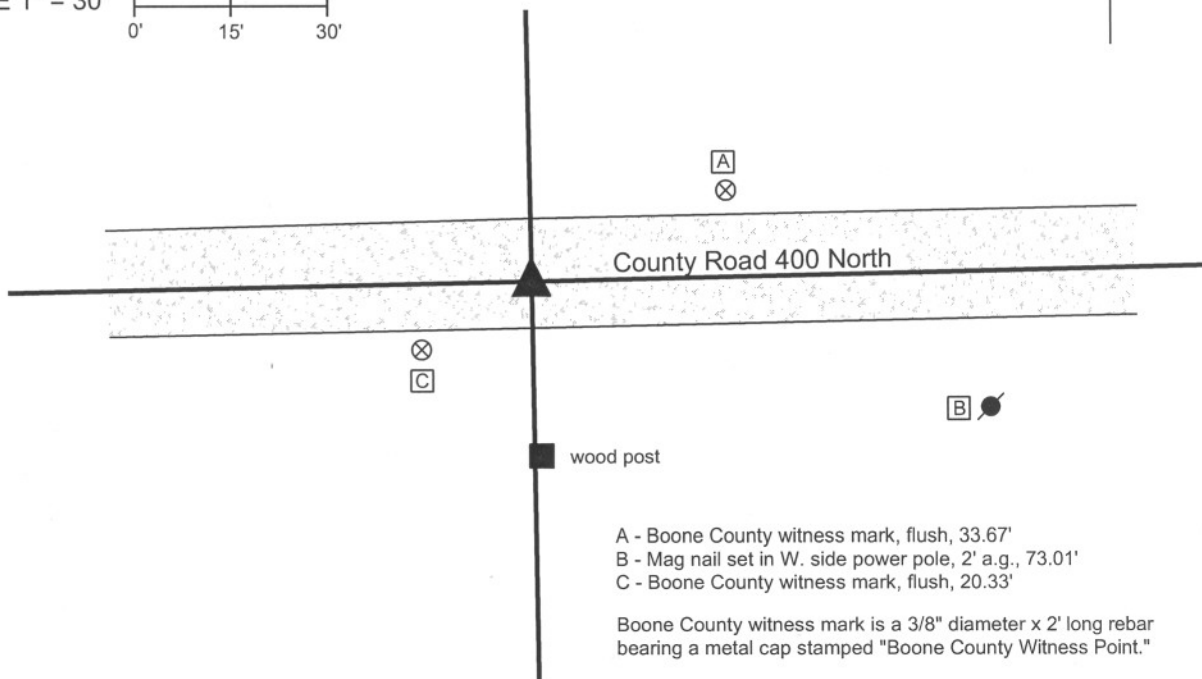
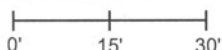
IN02_T19NR2E10_76

IN02_T19NR2E15_04



CORNER WITNESS DETAIL

SCALE 1" = 30'



- A - Boone County witness mark, flush, 33.67'
- B - Mag nail set in W. side power pole, 2' a.g., 73.01'
- C - Boone County witness mark, flush, 20.33'

Boone County witness mark is a 3/8" diameter x 2' long rebar bearing a metal cap stamped "Boone County Witness Point."

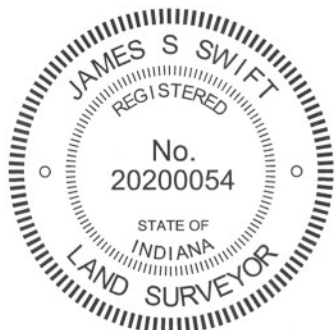
The harrison monument was set in place of a stone found.

No references to this corner were found the in the old BCS Surveyor's Record. No recent tie cards were found for this corner.

This corner was excavated on September 7, 2010. Prior to excavation, the apparent top of a stone was visible at the surface of the gravel road.

Excavation revealed that the stone was 18 inches tall by 9 inches N-S by 7 inches E-W. Being at the surface, the stone has been hit by a road grader repeatedly and the top of the stone appeared to be broken. Part of an etched "+" appeared to be visible on the top, but was obscured by the apparent damage to the top of the stone. The road bed is only 7 inches thick at this corner. Hence the stone was embedded 11 inches into the clay layer below the road and protruded 7 inches out of the clay layer, into the road. The stone was leaning slightly to the north but it was not apparent whether the stone had been originally set that way or whether it had been disturbed by equipment such as a road grader. The stone was removed and a harrison monument was set in the position of the top of the stone as originally visible prior to excavation, though considerably deeper than the stone.

This corner was originally established as a wood post in July, 1821.



Kenneth E. Hedge
Kenneth E. Hedge, County Surveyor

James S. Swift
James S. Swift, IN LS 20200054

July 25, 2011

Marion Twp

Section 10
T19N, R2E

Section 15
T19N, R2E

PHOTOGRAPHIC DOCUMENTATION

Date of photography: September 7, 2010

View of the stone as first exposed.



The stone partially exposed.



View from the west, looking across the stone and east along County Road 400 North.



The stone more fully exposed.
View from the east and above.



The stone removed from the road bed.



For details and documentation, refer to related sheet "Section Corner Record."

SECTION CORNER RECORD

NE 400-1000

BOONE COUNTY SURVEYOR'S OFFICE

State Plane grid coordinates NAD83 (NSRS 2007):

North: 1767835.66 East: 3177506.88 (U.S. survey feet)

Type of monument: Harrison, 4" disk 'Section Corner'

Depth: One inch below adjacent road surface

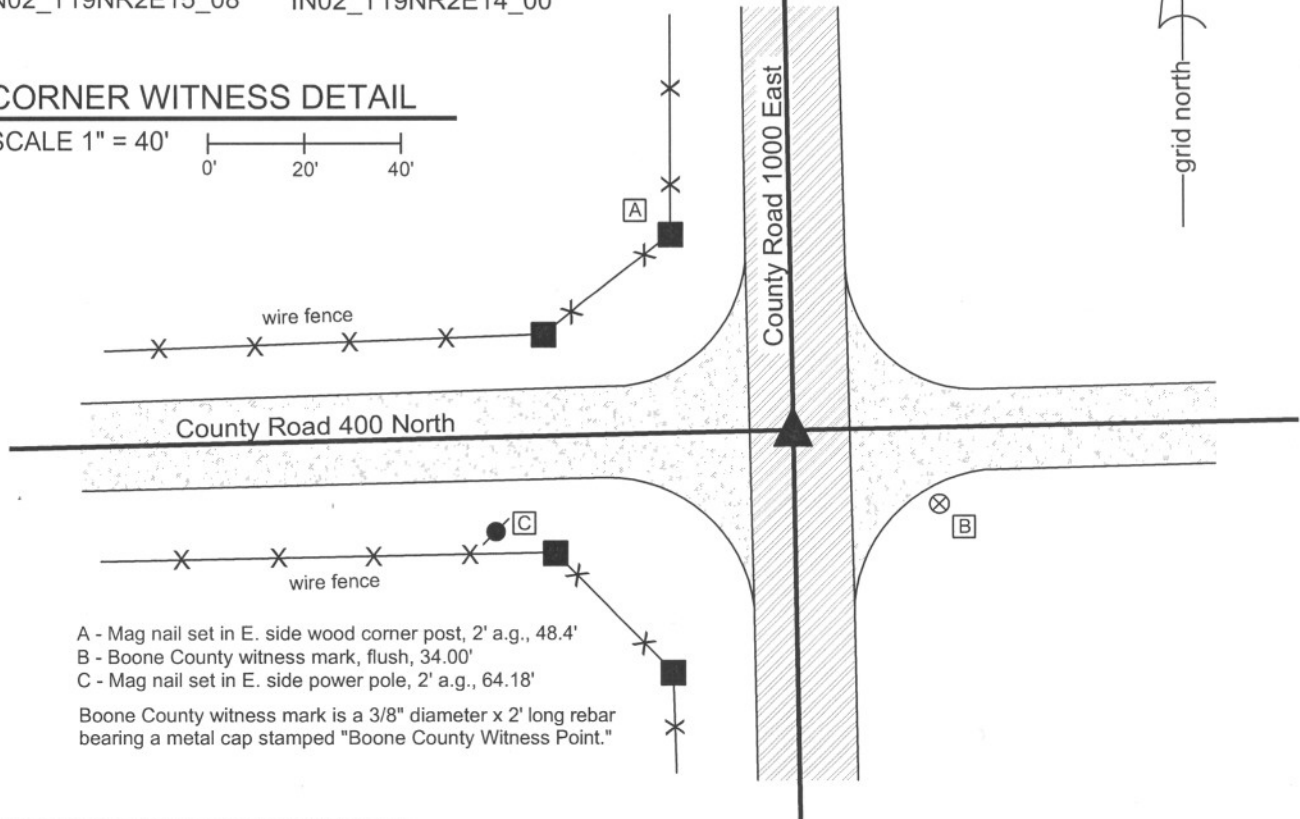
Indiana tie card references:

IN02_T19NR2E10_80 IN02_T19NR2E11_76

IN02_T19NR2E15_08 IN02_T19NR2E14_00

CORNER WITNESS DETAIL

SCALE 1" = 40'



A - Mag nail set in E. side wood corner post, 2' a.g., 48.4'

B - Boone County witness mark, flush, 34.00'

C - Mag nail set in E. side power pole, 2' a.g., 64.18'

Boone County witness mark is a 3/8" diameter x 2' long rebar bearing a metal cap stamped "Boone County Witness Point."

The harrison monument was set over a stone found.

No references to this corner were found in the old BCS Surveyor's Record. No recent tie cards were found for this corner.

This corner was excavated on August 27, 2010. Prior to excavation a nail was visible in a hole 1 inch below the surrounding asphalt. Excavation revealed a 1/2 inch diameter rebar found at 6 inches deep, 0.2 foot north of the nail. Further excavation revealed a stone found at 31 inches deep. The stone is fully embedded in the clay layer below the road with the top of the stone at the bottom of the road bed. The stone is 18 inches N-S by 12 inches E-W and approximately 8 inches tall, as measured on the northeast edge. The characteristics of this stone, embedded in the clay and horizontal, rather than vertical, fit the characteristics of other corner stones which appear to have been intentionally set but are either not mentioned in the BCS Surveyor's Record or are mentioned as "a stone that was set" (meaning the stone was found and appeared to be intentionally set). It is presumed that these stones were set by pioneer settlers or surveyors prior to the second half of the 1800s when the common practice was adopted by County Surveyors of setting the stones in a vertical orientation. The stone was left in place and the harrison monument was set over the approximate top, center of the stone. The nail, removed during excavation, had been 0.7 foot north and 1.2 feet east of this point.

This corner was originally established as a wood post in July, 1821.



Kenneth E. Hedge
Kenneth E. Hedge, County Surveyor

James S. Swift
James S. Swift, IN LS 20200054
July 25, 2011

Marion Township

Section 10 T19N, R2E	Section 11 T19N, R2E
Section 15 T19N, R2E	Section 14 T19N, R2E

PHOTOGRAPHIC DOCUMENTATION

Date of photography: August 27, 2010

View of the stone from above and east.



View of the stone from above and north.



View of the stone from above and west.



For details and documentation, refer to related sheet "Section Corner Record."