

# SECTION CORNER RECORD

NE 300-300

## BOONE COUNTY SURVEYOR'S OFFICE

State Plane grid coordinates NAD83 (CORS96):

North: 1761579.91 East: 3140427.34 (U.S. survey feet)

Type of monument: Harrison, 4" disk 'Section Corner'

Depth: six inches below adjacent gravel road surface


Indiana tie card references:

IN02\_T19NR1E16\_80 IN02\_T19NR1E15\_72

IN02\_T19NR1E21\_08 IN02\_T19NR1E22\_00

### CORNER WITNESS DETAIL

SCALE 1" = 40'



- A - Mag nail set in S. side power pole, 2' a.g., 107.03'
- B - Mag nail set in E. side wood post, 2' a.g., 15.49'
- C - Boone County witness mark, flush, 27.78'
- D - Mag nail set in N. side power pole, 2' a.g., 132.76'

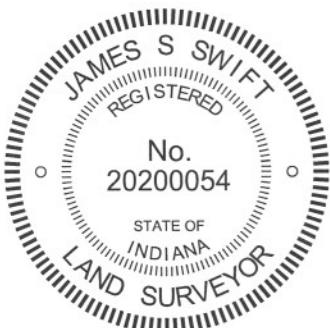
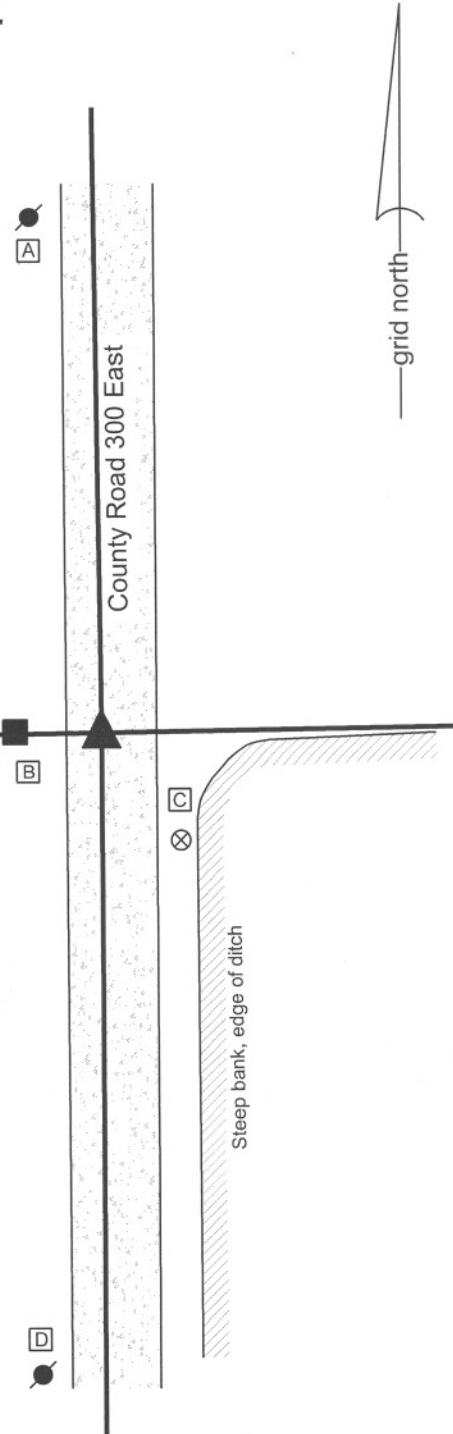
Boone County witness mark is a 3/8" diameter x 2' long rebar bearing a metal cap stamped "Boone County Witness Point."

The harrison monument was set in place of vertical section of railroad rail.

No specific descriptions of this corner were found in the BCS Surveyor's Record. A BCS tie card dated November, 1970 states "no stone." A BCS tie card dated July 27, 2005 shows the corner as a steel rail with no documentation of source.

This corner was excavated on March 10, 2011. Prior to excavation, a railroad rail was found at 4 inches deep. Excavation of an area extending 6 feet north, 4 feet east, 5 feet south and 6 feet west of the rail did not yield any further evidence of the corner. It is most likely that the rail was set in association with the 1970 tie card. The rail does fit with the local evidence of the corner, being located in the approximate center of the north-south county road and immediately east of an old wood end post on the west side of the road. The rail was accepted as the best available evidence of the corner. The rail was removed during excavation and replaced with a harrison monument in the same position.

This corner was originally established as a wood post in June, 1822.



*Kenneth E. Hedge*  
Kenneth E. Hedge, County Surveyor

*James S. Swift*  
James S. Swift, IN LS 20200054  
March 1, 2012

Center Township

Section 16 T19N, R1E	Section 15 T19N, R1E
Section 21 T19N, R1E	Section 22 T19N, R1E

# SECTION CORNER RECORD

NE 300-350

## BOONE COUNTY SURVEYOR'S OFFICE

State Plane grid coordinates NAD83 (2011):

North: 1761627.06 East: 3143028.23 (U.S. survey feet)

Type of monument: Harrison, 4" disk 'Section Corner'

Depth: Two inches above adjacent ground

Indiana tie card references:

IN02\_T19NR1E15\_76 IN02\_T19NR1E22\_04

### CORNER WITNESS DETAIL

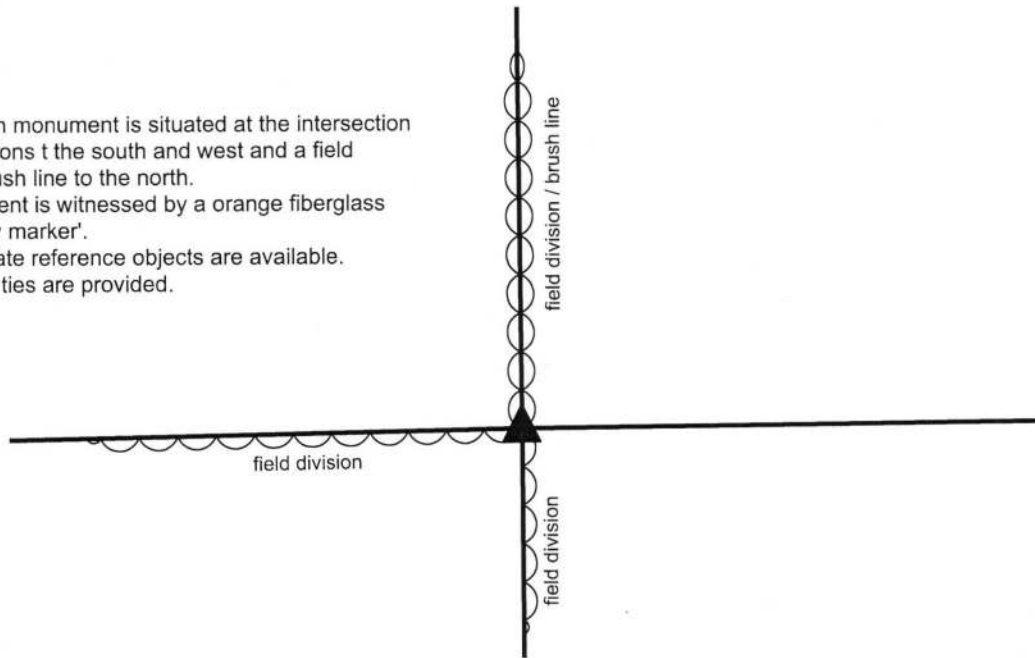
No scale

The Harrison monument is situated at the intersection of field divisions to the south and west and a field division / brush line to the north.

The monument is witnessed by an orange fiberglass lathe 'survey marker'.

No appropriate reference objects are available.

No distance ties are provided.

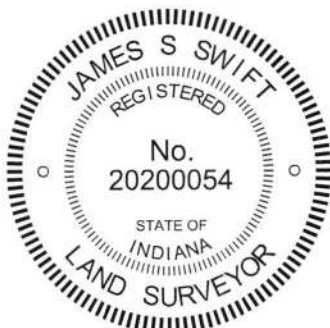


The Harrison monument was set over the subterranean base of a wood corner post.


A BCS tie card dated October, 1884 states, with respect to this corner, "Re-estab. from old B. Trees, Rock 16, 10, 6 +." No recent BCS tie cards were found referencing this corner.

Excavation was performed at this corner on October 19, 2017. Prior to excavation, the top of an old wood corner post was found lying on the ground near the intersection of field divisions to the north, south and west. Excavation revealed the base of the post found precisely at the intersection of the field divisions, approximately 4 feet south of the part of the post found lying on the ground. Excavation around the post and in the immediate vicinity of the corner revealed no further evidence found. The stone called for in the 1884 record was not found. The position of the base of the post fit well with the relative positions of proximate corners. The base of the post is approximately 11 feet north of a straight line connecting the section corners approximately 1/2 mile east and west, respectively, but nearly equidistant from those corners. The base of the post was accepted as the best available evidence of the original position of the corner. The top 16 inches of the base of the post were exposed. The post appeared to be vertical and was entirely stable in the ground at that depth. The top of the base of the post was sawed off. The upper 4 inches of the remaining portion of the post were encased in concrete and the rest of the post was left in the ground. A Harrison monument was set directly over the remaining portion of the base of the post.

This corner was originally established as a wood post in 1822.



  
Kenneth E. Hedge, County Surveyor

  
James S. Swift, IN LS 20200054  
October 31, 2017

Center Twp

Section 15  
T19N, R1E

Section 22  
T19N, R1E

# SECTION CORNER RECORD

NE 300-400

## BOONE COUNTY SURVEYOR'S OFFICE

State Plane grid coordinates NAD83 (CORS96):

North: 1761652.77 East: 3145628.76 (U.S. survey feet)

Type of monument: Harrison, 4" disk 'Section Corner'

Depth: six inches below adjacent gravel road surface

Indiana tie card references:

IN02\_T19NR1E15\_80      IN02\_T19NR1E14\_72

IN02\_T19NR1E22\_08      IN02\_T19NR1E23\_00

### CORNER WITNESS DETAIL

SCALE 1" = 30'

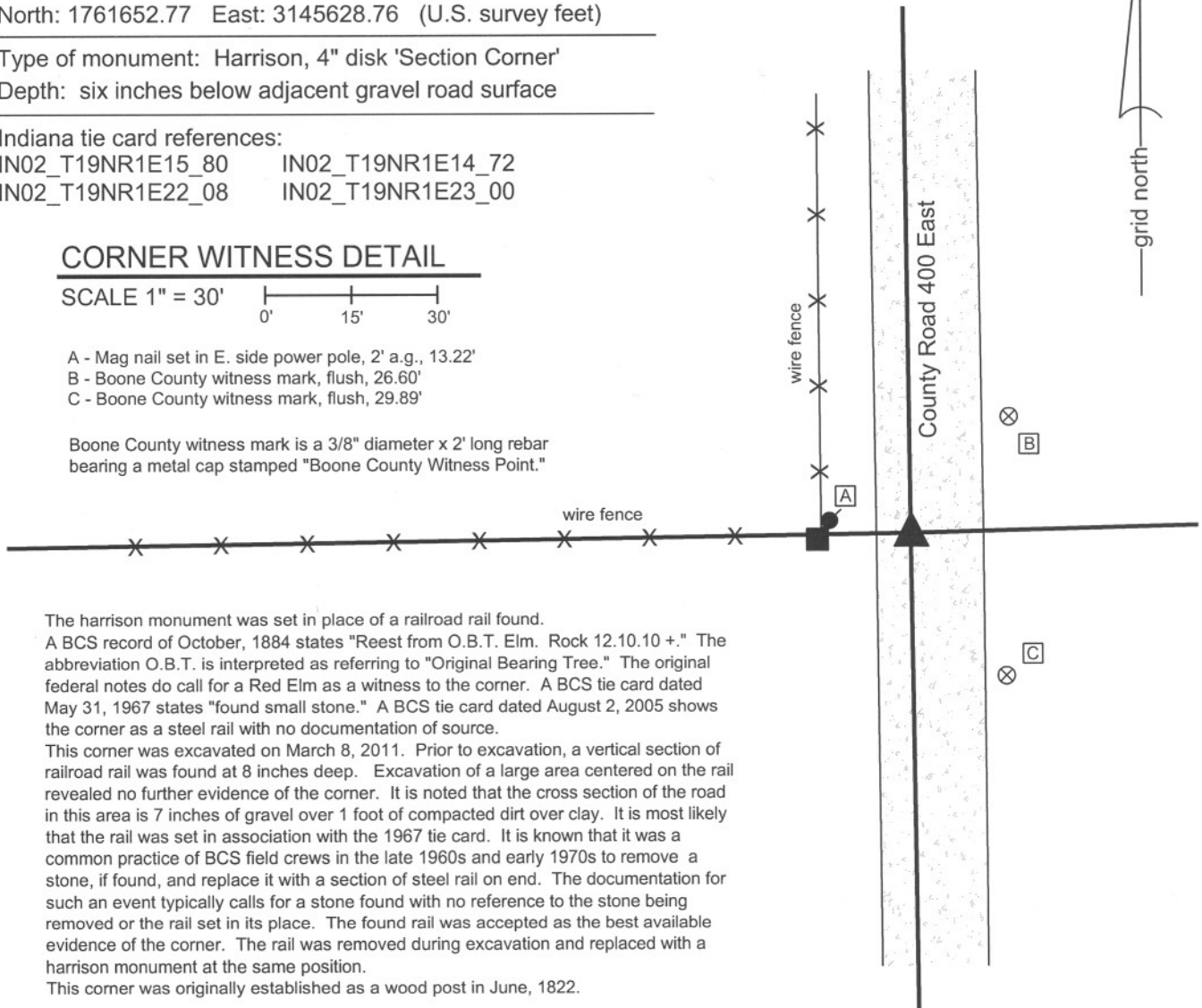


A - Mag nail set in E. side power pole, 2' a.g., 13.22'

B - Boone County witness mark, flush, 26.60'

C - Boone County witness mark, flush, 29.89'

Boone County witness mark is a 3/8" diameter x 2' long rebar bearing a metal cap stamped "Boone County Witness Point."

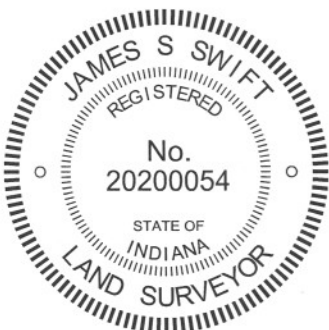


The harrison monument was set in place of a railroad rail found.

A BCS record of October, 1884 states "Reest from O.B.T. Elm. Rock 12.10.10 +." The abbreviation O.B.T. is interpreted as referring to "Original Bearing Tree." The original federal notes do call for a Red Elm as a witness to the corner. A BCS tie card dated May 31, 1967 states "found small stone." A BCS tie card dated August 2, 2005 shows the corner as a steel rail with no documentation of source.

This corner was excavated on March 8, 2011. Prior to excavation, a vertical section of railroad rail was found at 8 inches deep. Excavation of a large area centered on the rail revealed no further evidence of the corner. It is noted that the cross section of the road in this area is 7 inches of gravel over 1 foot of compacted dirt over clay. It is most likely that the rail was set in association with the 1967 tie card. It is known that it was a common practice of BCS field crews in the late 1960s and early 1970s to remove a stone, if found, and replace it with a section of steel rail on end. The documentation for such an event typically calls for a stone found with no reference to the stone being removed or the rail set in its place. The found rail was accepted as the best available evidence of the corner. The rail was removed during excavation and replaced with a harrison monument at the same position.

This corner was originally established as a wood post in June, 1822.



*Kenneth E. Hedge*  
 Kenneth E. Hedge, County Surveyor

*James S. Swift*  
 James S. Swift, IN LS 20200054  
 March 1, 2012

Center Township

Section 15 T19N, R1E	Section 14 T19N, R1E
Section 22 T19N, R1E	Section 23 T19N, R1E

# SECTION CORNER RECORD

NE 350-300

## BOONE COUNTY SURVEYOR'S OFFICE

State Plane grid coordinates NAD83 (CORS96):

North: 1764226.75 East: 3140395.35 (U.S. survey feet)

Type of monument: Harrison, 4" disk 'Section Corner'

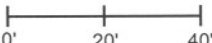
Depth: six inches below adjacent gravel road surface

Indiana tie card references:

IN02\_T19NR1E15\_36

IN02\_T19NR1E16\_44

### CORNER WITNESS DETAIL

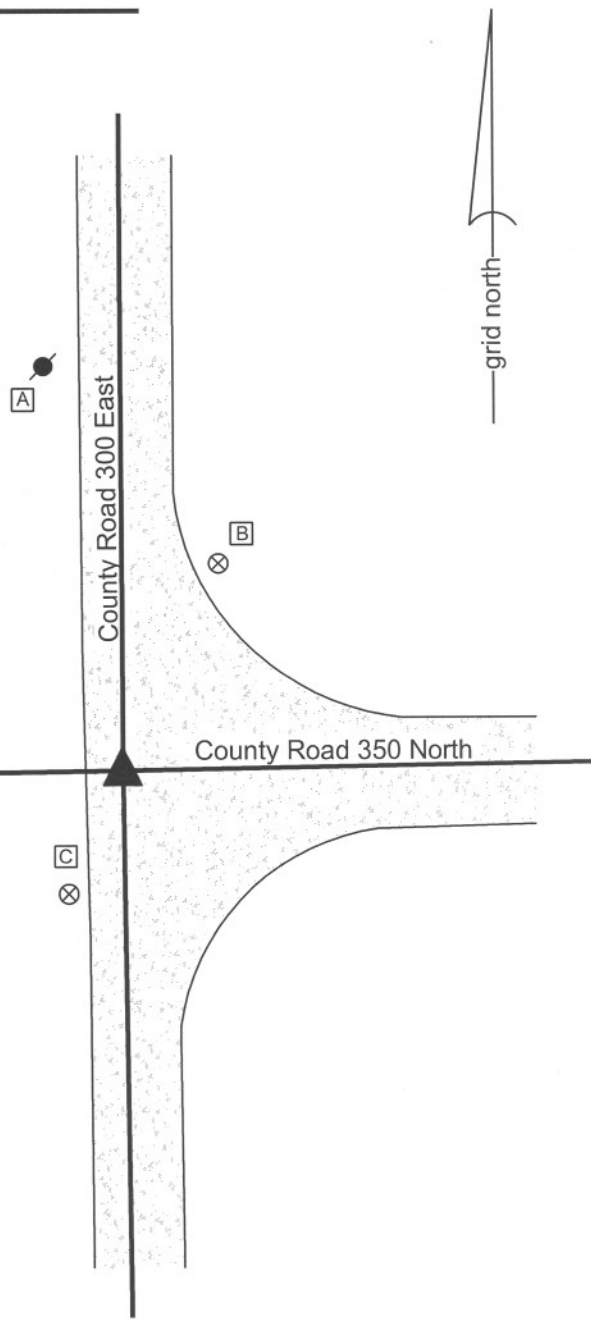
SCALE 1" = 40' 

A - Mag nail set in S. side power pole, 2' a.g., 89.38'

B - Boone County witness mark, flush, 47.60'

C - Boone County witness mark, flush, 28.06'

Boone County witness mark is a 3/8" diameter x 2' long rebar bearing a metal cap stamped "Boone County Witness Point."

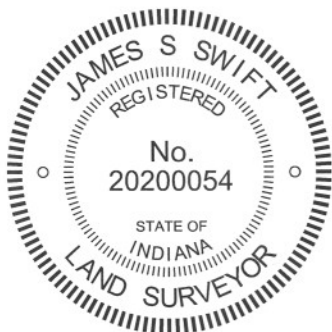


The harrison monument was set in place of a stone found. No specific descriptions of this corner were found in the BCS Surveyor's Record. The corner is mentioned as the terminal point for measurements in records of 1851, 1852 and 1861. A BCS tie card dated November 1970 states "no stone." A BCS tie card dated July 27, 2005 shows the corner as a steel rail with no documentation of source.

This corner was excavated on March 17, 2011. Prior to excavation a vertical section of railroad rail was found at 3 inches deep. Excavation revealed a stone found at 4 inches deep. The stone measured 22 inches tall by 10 inches N-S by 8 inches E-W. The stone was embedded in the clay layer below the road, protruding 3 inches out of the clay layer into the bottom of the road bed. No specific markings were found on the stone. The stone was 1.2 feet east and 3.5 feet south of the rail. The stone fit better than the rail with local evidence in the form of the centers of the county roads, being closer to the westerly extension of the center of County Road 350 North.

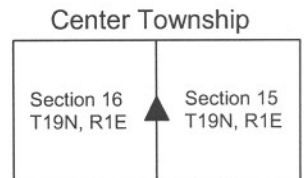
It is most likely that the rail was set in association with the 1970 tie card. Clearly the statement "no stone" on that document was erroneous. Both the stone and the rail were removed. A harrison monument was set in the position of the top center point of the stone.

This corner was originally established as a wood post in June, 1822.



  
 Kenneth E. Hedge, County Surveyor

  
 James S. Swift, IN LS 20200054  
 March 1, 2012



PHOTOGRAPHIC DOCUMENTATION

Date of photography: March 17, 2011

View of the stone from above and north.



View of the stone from above and south.



View of from the west, looking across the stone along east along County Road 350 North.



View from the south, looking across the stone and north along County Road 300 East.



For details and documentation, refer to related sheet "Section Corner Record."

# SECTION CORNER RECORD

NE 350-400

## BOONE COUNTY SURVEYOR'S OFFICE

State Plane grid coordinates NAD83 (CORS96):

North: 1764313.20 East: 3145599.57 (U.S. survey feet)

Type of monument: Harrison, 4" disk 'Section Corner'

Depth: six inches below adjacent gravel road surface

Indiana tie card references:

IN02\_T19NR1E14\_36 IN02\_T19NR1E15\_44

### CORNER WITNESS DETAIL

SCALE 1" = 40'



- A - Boone County witness mark, flush, 39.19'
- B - Boone County witness mark, flush, 43.33'
- C - Mag nail set in E. side power pole, 2' a.g., 24.42'

Boone County witness mark is a 3/8" diameter x 2' long rebar bearing a metal cap stamped "Boone County Witness Point."



County Road 400 East

County Road 350 North

The harrison monument was set over a stone found.

A BCS record of October 17, 1870 states "Reestablished from one tree. set a rock 12.10 by 6 + and four small ones under it." A BCS tie card dated October, 1975 states "No stone - set rail." A BCS tie card dated August 2, 2005 shows the corner as a harrison monument with no documentation of source.

This corner was excavated on March 3, 2011. Prior to excavation a vertical section of railroad rail was found at 10 inches deep in the gravel road. No harrison monument was found. Excavation revealed a stone found at 24 inches deep. The stone is embedded in the clay layer below the road with the top of the stone at the bottom of the road bed. The stone has a clearly etched "+" on the top. With 8 inches of the top of the stone exposed, it measures 12 inches E-W by 9 inches N-S (though the top portion of the rock is 6 inches E-W). The north edge of the stone is approximately 9 inches tall. The generally stone matches the 1870 record dimensions if the E-W dimension is interpreted as being the top. It has been noted at several corners that irregular shaped rocks may be interpreted as having a variety of measurements. Typically, though not always, the recorded dimensions represent the largest dimensions. Occasionally, the recorded dimensions fit with an obvious part of the stone, such as the top. In any case, the dimensions of the stone are close to the record dimensions and the stone matches the characteristics of other rocks found marking corners, being embedded in the clay layer below the road, situated upright, oriented in cardinal directions and etched with a "+." The stone was held as marking the corner and left in place. The harrison monument was set directly over the etched "+" on the top of the stone. The railroad rail, removed during excavation, had been 1.0 foot east and 1.3 feet north of the stone.

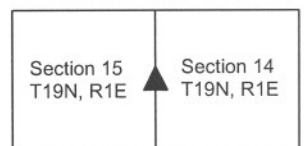
This corner was originally established as a wood post in June, 1822.



*Kenneth E. Hedge*  
Kenneth E. Hedge, County Surveyor

*James S. Swift*  
James S. Swift, IN LS 20200054  
March 1, 2012

Center Township



PHOTOGRAPHIC DOCUMENTATION

Date of photography: March 3, 2011

View of the stone as first exposed.



View of the stone from above and south.



View from the east, looking across the stone (in shadows) and west along County Road 350 North.



View of the stone from above and north.



Same view as above, close-up.



For details and documentation, refer to related sheet "Section Corner Record."

# SECTION CORNER RECORD

NE 400-300

## BOONE COUNTY SURVEYOR'S OFFICE

State Plane grid coordinates NAD83 (2011):  
North: 1766872.77 East: 3140390.85 (U.S. survey feet)

Type of monument: Harrison, 4" disk 'Section Corner'  
Depth: One inch below adjacent road surface

Indiana tie card references:  
IN02\_T19NR1E09\_80 IN02\_T19NR1E10\_72  
IN02\_T19NR1E16\_08 IN02\_T19NR1E15\_00

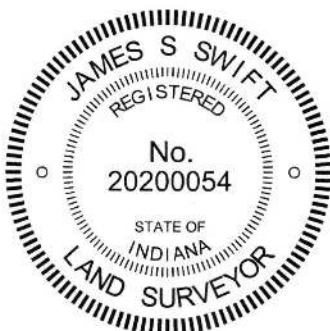
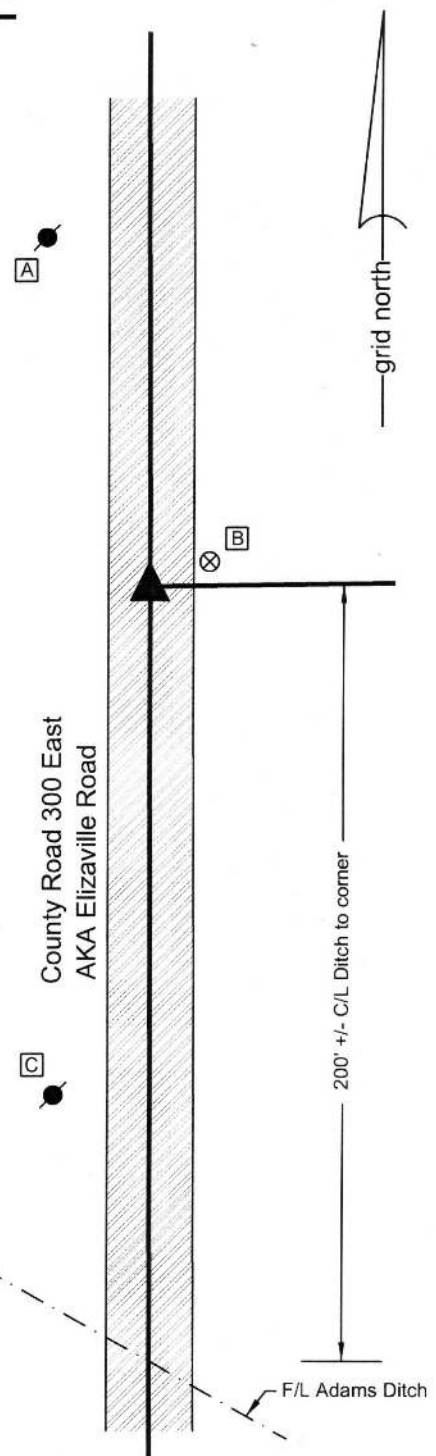
### CORNER WITNESS DETAIL

SCALE 1" = 50'  
0' 25' 50'

- A - Mag nail set in S.E. side power pole, 2' a.g., 92.7'
- B - Boone County witness mark, flush, 16.8'
- C - Mag nail set in N.E. side power pole, 2' a.g., 132.2'

Boone County witness mark is a 3/8" diameter x 2' long rebar bearing a metal cap stamped "Boone County Witness Point."

The Harrison monument was set at a calculated position.  
No specific descriptions of this corner were found in the old BCS Surveyor's Record, nor were any recent BCS tie cards found referencing this corner. The corner is not shown as being monumented on private surveys recorded in the Boone County Recorder's Office. Also no evidence of the corner was found in the immediate vicinity of the corner except for the straight north-south roadway of County Road 300 East. This corner was excavated on October 16, 2013. No monuments were found prior to excavation. A calculated position for the corner was determined by extending the line of a fence providing evidence of the south line of the east half of the southwest quarter of section 10 west to the center of County Road 300 East, which point also fit with a position for the corner which was calculated by extending a line north from the east quarter corner of section 16 at double the distance from said quarter corner to the apparent southeast corner of the north half of the northeast quarter of section 16, as determined at the apparent intersection of the physical center of a straight E-W section of Elizaville Road with the physical center of County Road 300 East. Excavation of an area extending north 3 feet, south 3 feet, east 2 feet and west 2 feet yielded no evidence of the corner. The bottom of the road bed was found to be at 14 inches deep. Excavation extended to a minimum of 20 inches deep. A Harrison monument was set at the calculated position for the corner.



*Kenneth E. Hedge*  
Kenneth E. Hedge, County Surveyor

*James S. Swift*  
James S. Swift, IN LS 20200054  
March 24, 2016

Clinton Township

Center Township

Section 9 T19N, R1E	Section 10 T19N, R1E
Section 16 T19N, R1E	Section 15 T19N, R1E



# SECTION CORNER RECORD

NE 400-350

## BOONE COUNTY SURVEYOR'S OFFICE

State Plane grid coordinates NAD83 (2011):

North: 1766911.46 East: 3142978.11 (U.S. survey feet)

Type of monument: Harrison, 4" disk 'Section Corner'

Depth: Two inches above adjacent grade

Indiana tie card references:

IN02\_T19NR1E10\_76 IN02\_T19NR1E15\_04



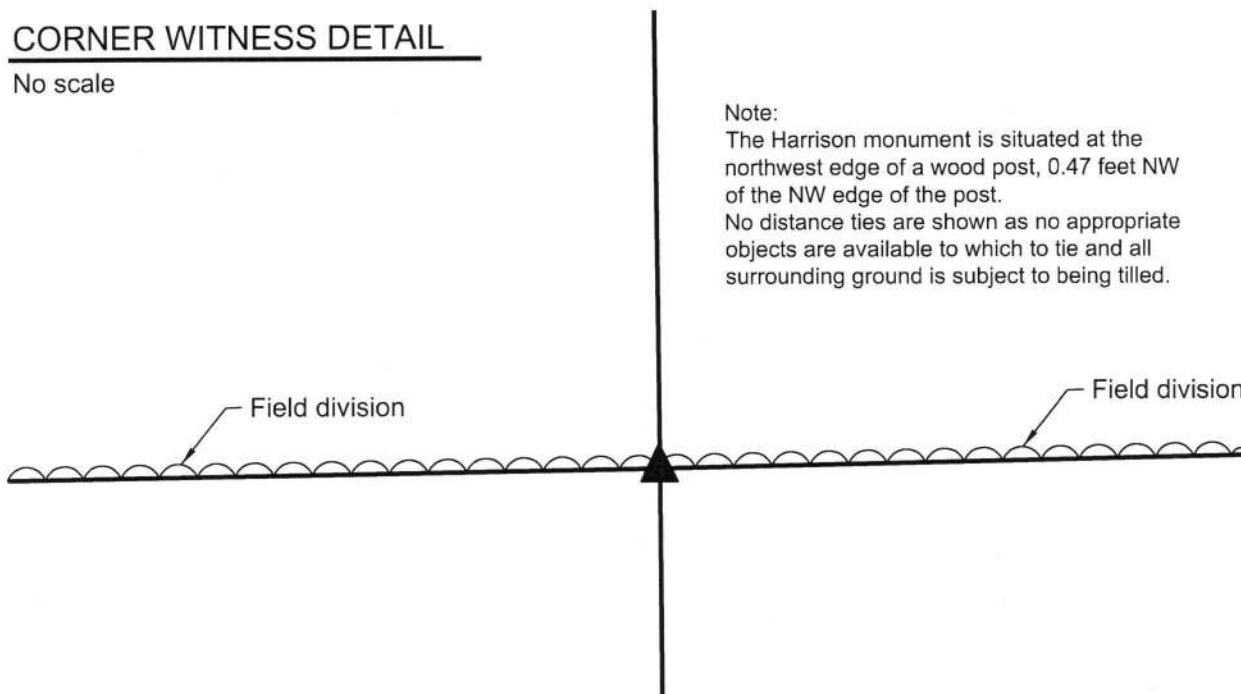
### CORNER WITNESS DETAIL

No scale

Note:

The Harrison monument is situated at the northwest edge of a wood post, 0.47 feet NW of the NW edge of the post.

No distance ties are shown as no appropriate objects are available to which to tie and all surrounding ground is subject to being tilled.



The Harrison monument was set in place of a stone found at the northwest edge of a wood post.

A BCS record of March 10, 1852 shows the corner with a distance tie to two trees but makes no specific mention of a monument set or found.

No recent BCS tie cards were found referencing the corner.

An ancient wood post with fencing to cut-off to the north and west was found witnessing the corner. The post is in-line with a field division to the east and west and is in a position which fits well with distances to proximate corners. Excavation around the post on October 16, 2017 yielded several small stones and one larger stone. The larger stone was leaning slightly as found, embedded in the dirt adjacent to the post with top flush with the ground. The stone did not appear to be acting as a brace rock for the post and did not have the haphazard placement of the the other stones around the post. The stone was removed from the ground and measured to be 14 inches tall by 9 inches E-W by 9 inches N-S. The stone had a large base and smaller, flat top, readily identifiable as the corner. This stone was accepted as marking the corner and was replaced with a Harrison monument in the same position. The monument is situated at the northwest edge of the post, 0.47 feet northwest of the northwest edge of the post. The stone was left sitting on the ground adjacent to the monument.

This corner was originally established as a wood post in 1822.



*Kenneth E. Hedge*  
Kenneth E. Hedge, County Surveyor

*James S. Swift*  
James S. Swift, IN LS 20200054  
October 17, 2017

Clinton Township

Section 10  
T19N, R1E

Center Township

Section 15  
T19N, R1E

# SECTION CORNER RECORD

## BOONE COUNTY SURVEYOR'S OFFICE

NE 400-400

State Plane grid coordinates NAD83 (CORS96):

North: 1766962.85 East: 3145574.53 (U.S. survey feet)

Type of monument: Harrison, 4" disk 'Section Corner'

Depth: six inches below adjacent gravel road surface

Indiana tie card references:

IN02\_T19NR1E10\_80      IN02\_T19NR1E11\_72

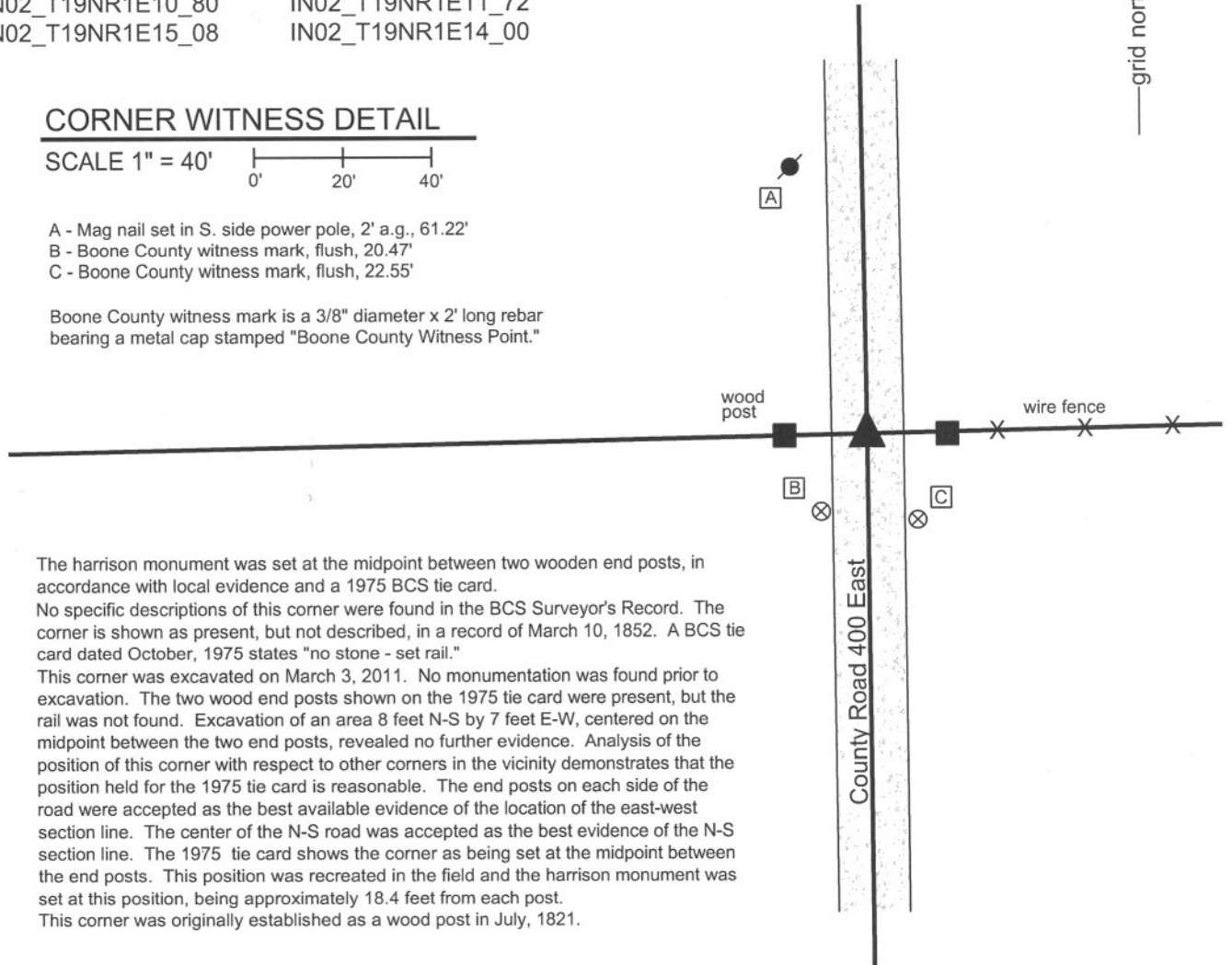
IN02\_T19NR1E15\_08      IN02\_T19NR1E14\_00

### CORNER WITNESS DETAIL

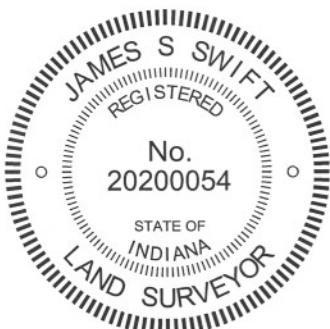
SCALE 1" = 40'

- A - Mag nail set in S. side power pole, 2' a.g., 61.22'
- B - Boone County witness mark, flush, 20.47'
- C - Boone County witness mark, flush, 22.55'

Boone County witness mark is a 3/8" diameter x 2' long rebar bearing a metal cap stamped "Boone County Witness Point."



The Harrison monument was set at the midpoint between two wooden end posts, in accordance with local evidence and a 1975 BCS tie card. No specific descriptions of this corner were found in the BCS Surveyor's Record. The corner is shown as present, but not described, in a record of March 10, 1852. A BCS tie card dated October, 1975 states "no stone - set rail." This corner was excavated on March 3, 2011. No monumentation was found prior to excavation. The two wood end posts shown on the 1975 tie card were present, but the rail was not found. Excavation of an area 8 feet N-S by 7 feet E-W, centered on the midpoint between the two end posts, revealed no further evidence. Analysis of the position of this corner with respect to other corners in the vicinity demonstrates that the position held for the 1975 tie card is reasonable. The end posts on each side of the road were accepted as the best available evidence of the location of the east-west section line. The center of the N-S road was accepted as the best evidence of the N-S section line. The 1975 tie card shows the corner as being set at the midpoint between the end posts. This position was recreated in the field and the Harrison monument was set at this position, being approximately 18.4 feet from each post. This corner was originally established as a wood post in July, 1821.



*Kenneth E. Hedge*  
 Kenneth E. Hedge, County Surveyor

*James S. Swift*  
 James S. Swift, IN LS 20200054  
 March 1, 2012

Clinton Twp	Section 10 T19N, R1E	Section 11 T19N, R1E
Center Twp	Section 15 T19N, R1E	Section 14 T19N, R1E