

SECTION CORNER RECORD

SE 200-900

BOONE COUNTY SURVEYOR'S OFFICE

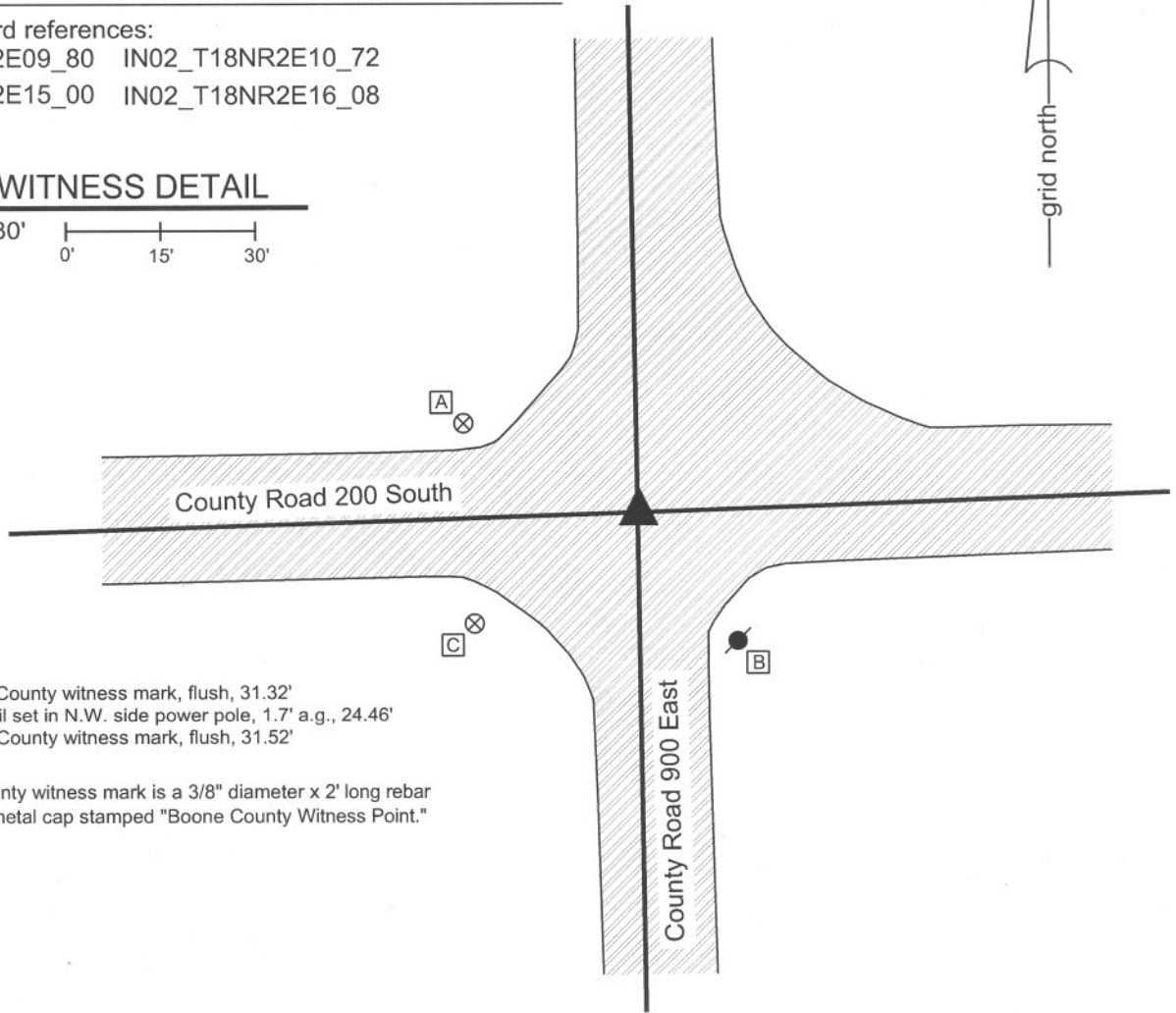
State Plane grid coordinates NAD83 (NSRS 2007):
North: 1736179.21 East: 3172574.78 (U.S. survey feet)

Type of monument: Harrison, 4" disk 'Section Corner'
Depth: One inch below adjacent road surface

Indiana tie card references:
IN02_T18NR2E09_80 IN02_T18NR2E10_72
IN02_T18NR2E15_00 IN02_T18NR2E16_08

CORNER WITNESS DETAIL

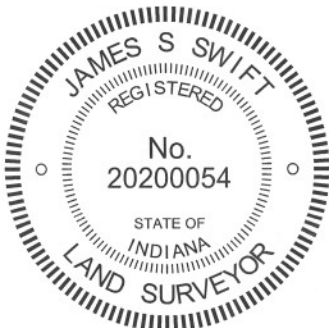
SCALE 1" = 30'
0' 15' 30'



- A - Boone County witness mark, flush, 31.32'
- B - Mag nail set in N.W. side power pole, 1.7' a.g., 24.46'
- C - Boone County witness mark, flush, 31.52'

Boone County witness mark is a 3/8" diameter x 2' long rebar bearing a metal cap stamped "Boone County Witness Point."

The harrison monument was set in place of a railroad rail found. A BCS record on October 24, 1892 states "found both corner rocks + wit." (No record was found for any known corner stones prior to 1892). A BCS tie card dated October 11, 1968 states "no stone." This corner was excavated on June 2, 2008. Prior to excavation, a mag nail was visible at the surface. Excavation yielded a 5/8 inch rebar with a metal cap at 7 inches. Further excavation yielded a railroad rail at 9 inches. The rebar was situated against the south side of the rail. Both monuments were below and slightly north of the mag nail. Further excavation of an area 4.5 feet N-S by 8 feet E-W extending 4.5 feet west and 2.5 feet north of the rail yielded no more monuments. The record stone was not found. The harrison was set in the position of the railroad rail (removed during excavation), 0.14 of a foot north of the position of the mag nail (also removed during excavation). This corner was originally established as wood post in July, 1821.



Kenneth E. Hedge
Kenneth E. Hedge, County Surveyor

James S. Swift
James S. Swift, IN LS 20200054
March 18, 2009, Revised April 30, 2012

Union Township

Section 9 T18N, R2E	Section 10 T18N, R2E
Section 16 T18N, R2E	Section 15 T18N, R2E

SECTION CORNER RECORD

SE 200-950

BOONE COUNTY SURVEYOR'S OFFICE

State Plane grid coordinates NAD83 (NSRS 2007):

North: 1736274.29 East: 3175265.80 (U.S. survey feet)

Type of monument: Harrison, 4" disk 'Section Corner'

Depth: flush with adjacent with road surface

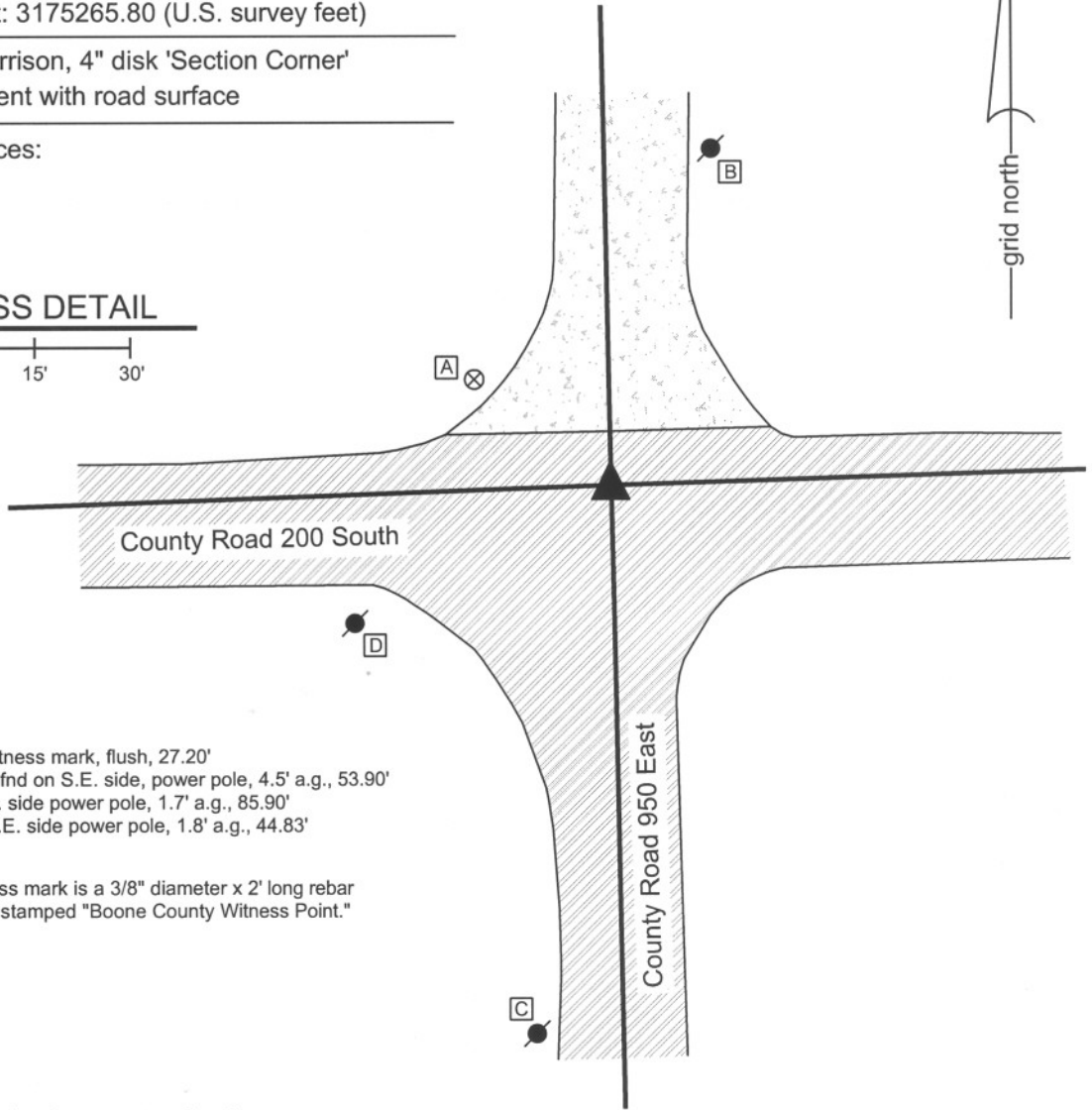
Indiana tie card references:

IN02_T18NR2E10_76

IN02_T18NR2E15_04

CORNER WITNESS DETAIL

SCALE 1" = 30'
0' 15' 30'



- A - Boone County witness mark, flush, 27.20'
- B - Nail in bottle cap fnd on S.E. side, power pole, 4.5' a.g., 53.90'
- C - Mag nail set in N. side power pole, 1.7' a.g., 85.90'
- D - Mag nail set in N.E. side power pole, 1.8' a.g., 44.83'

Boone County witness mark is a 3/8" diameter x 2' long rebar bearing a metal cap stamped "Boone County Witness Point."

The harrison monument was set directly over a stone found.

A undated tie card which has been on file for this corner for many years is erroneously labled. The tie card on file was actually for the corner 1/4 mile to the west. The subject corner is represented on field notes dated June 1, 1974 but no tie card was found derived from these notes. The 1974 field notes call for a stone found. This corner was excavated on April 24, 2008. Prior to excavation two monuments were visible in approximate center of the intersection, one being a 5/8" rebar six inches below grade in a hole in the asphalt and the other being a mag nail 6 feet south of the rebar. The rebar fit with the remaining 1974 tie, being a nail in a bottle cap driven in a power pole in the northeast quadrant of the intersection. Excavation in the area of the rebar yielded a stone found at 4 feet deep. The stone is embedded in the clay below substantial amounts of fill. The harrison was set directly over the stone in the position formerly occupied by the rebar.

This corner was originally established as a wood post in July, 1821.

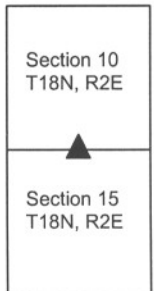


Kenneth E. Hedge
 Kenneth E. Hedge, County Surveyor

James S. Swift
 James S. Swift, IN LS 20200054

March 11, 2009, revised July 14, 2010

Union Township



PHOTOGRAPHIC DOCUMENTATION

Date of photography: April 24, 2008

1/2 rebar situated against railroad rail. Both monumnets were directly over the stone.



Corner stone - overhead view from North.



View of top of hole and County Road 200 South to the East.



Corner stone - overhead view from West.



Close up of the stone.



For details and documentation, refer to related sheet "Section Corner Record."

SECTION CORNER RECORD

SE 200-1000

BOONE COUNTY SURVEYOR'S OFFICE

State Plane grid coordinates NAD83 (NSRS 2007):

North: 1736356.30 East: 3177959.20 (U.S. survey feet)

Type of monument: Harrison, 4" disk 'Section Corner'

Depth: One inch below adjacent road surface

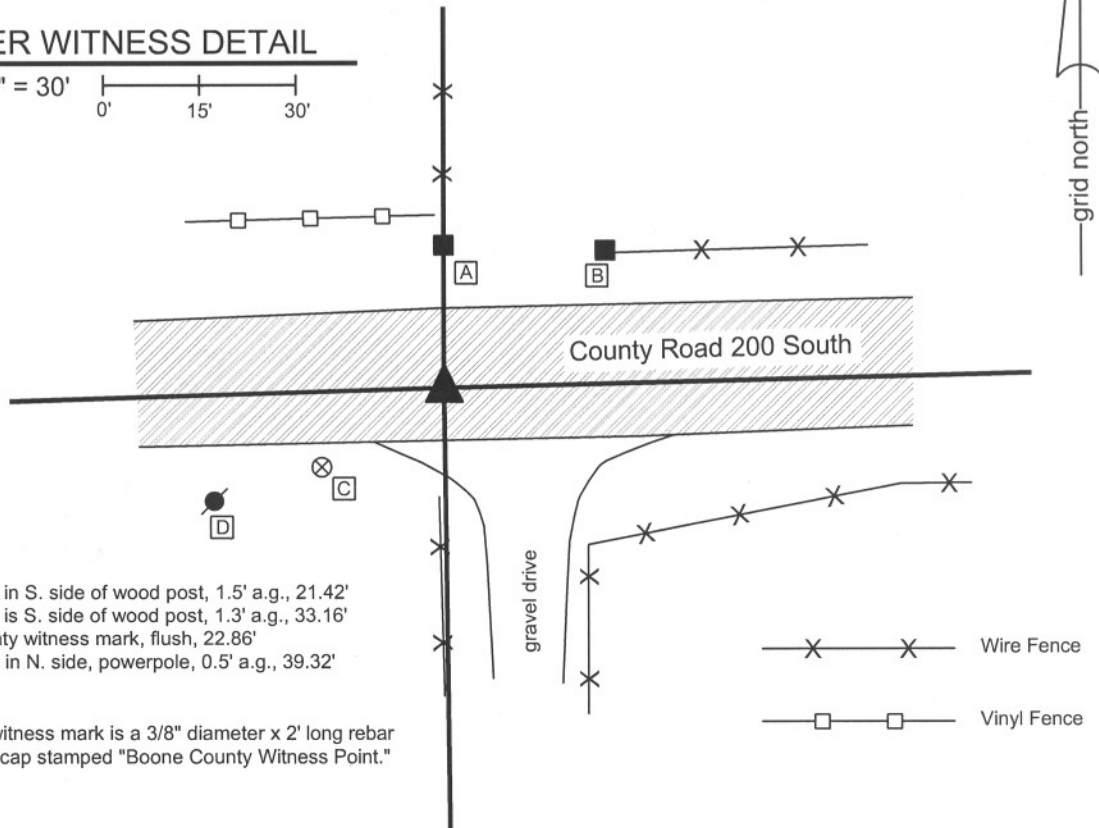
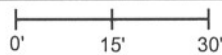
Indiana tie card references:

IN02_T18NR2E10_80 IN02_T18NR2E11_72

IN02_T18NR2E14_00 IN02_T18NR2E15_08

CORNER WITNESS DETAIL

SCALE 1" = 30'



- A - Mag nail set in S. side of wood post, 1.5' a.g., 21.42'
- B - Mag nail set in S. side of wood post, 1.3' a.g., 33.16'
- C - Boone County witness mark, flush, 22.86'
- D - P.K. nail fnd in N. side, powerpole, 0.5' a.g., 39.32'

Boone County witness mark is a 3/8" diameter x 2' long rebar bearing a metal cap stamped "Boone County Witness Point."

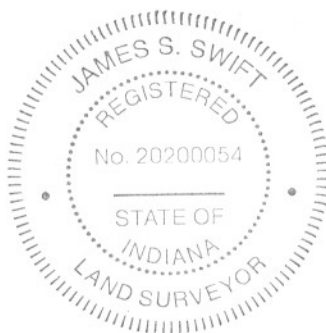
The harrison monument was set in the position of a railroad rail found.

A BCS record of April 20, 1883 states "Reestab. on line with e & f Sec 11, and D Sec 15 & q Sec. 11. Stone 20x16x16 marked + on top."

A BCS tie card of July 2, 1967 states "stone found." Prior to excavation the visible monument was a 5/8 inch rebar 6 inches deep in a hole in the asphalt. This rebar fit generally well with the 1967 ties. This corner was excavated on April 24, 2008. Excavation yielded a railroad rail at 12 inches.

The rebar was against the south side of the rail. Both monuments were removed. Further excavation yielded no more monuments. The stone was not found and it is considered most likely that the stone was removed and the rail installed in 1967. Although the no specific documentation was found for the rail, it is known that removal of the stone and installation of a railroad rail was a common practice of field crews from this office in that time frame.

The rail was replaced with a harrison monument. This corner was originally established as a wood post in July, 1821.



Kenneth E. Hedge
 Kenneth E. Hedge, County Surveyor

James S. Swift
 James S. Swift, IN LS 20200054

March 11, 2009

Union Township

Section 10 T18N, R2E	Section 11 T18N, R2E
Section 15 T18N, R2E	Section 14 T18N, R2E

SECTION CORNER RECORD

SE 250-900

BOONE COUNTY SURVEYOR'S OFFICE

State Plane grid coordinates NAD83 (NSRS 2007):

North: 1733534.18 East: 3172613.24 (U.S. survey feet)

Type of monument: Harrison, 4" disk 'Section Corner'

Depth: three inches above adjacent ground

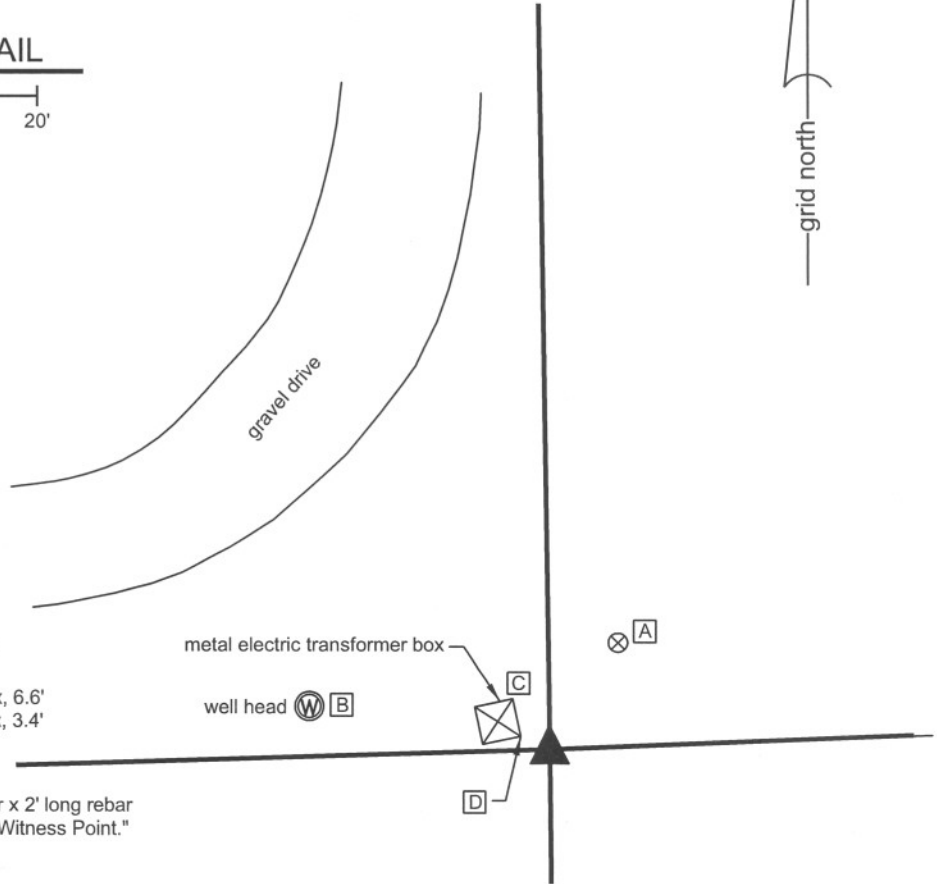
Indiana tie card references:

IN02_T18NR2E15_36

IN02_T18NR2E16_44

CORNER WITNESS DETAIL

SCALE 1" = 20'



- A - Boone County witness mark, flush, 13.15'
- B - Top center, well head, 25.5'
- C - N.E. corner, base, electric transformer box, 6.6'
- D - S.E. corner, base, electric transformer box, 3.4'

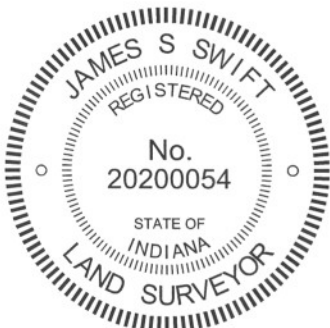
Boone County witness mark is a 3/8" diameter x 2' long rebar bearing a metal cap stamped "Boone County Witness Point."

The harrison monument was set in place of a rebar found bearing the cap "Carl Anderson, Prof. Engr."

A BCS record of May 10, 1883 discusses the corner but does not call for a specific monument at the corner. A witness stone described in the record was not found. A BCS record of October 24, 1892 states "Found rock at corner."

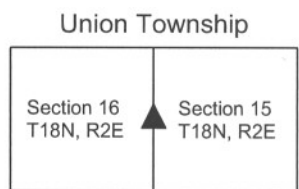
The capped rebar was found adjacent to the remnants of an ancient wood corner post. Numerous rocks were found in the immediate vicinity of the corner but none were specifically identifiable as corner stones. The rebar has been held as the corner for private surveys, including that of adjacent properties. The rebar was removed and the adjacent rocks displaced. A harrison monument was set in place of the capped rebar.

This corner was originally established as a wood post in 1821.



Kenneth E. Hedge
Kenneth E. Hedge, County Surveyor

James S. Swift
James S. Swift, IN LS 20200054
July 25, 2011



SECTION CORNER RECORD

BOONE COUNTY SURVEYOR'S OFFICE

SE 250-1000

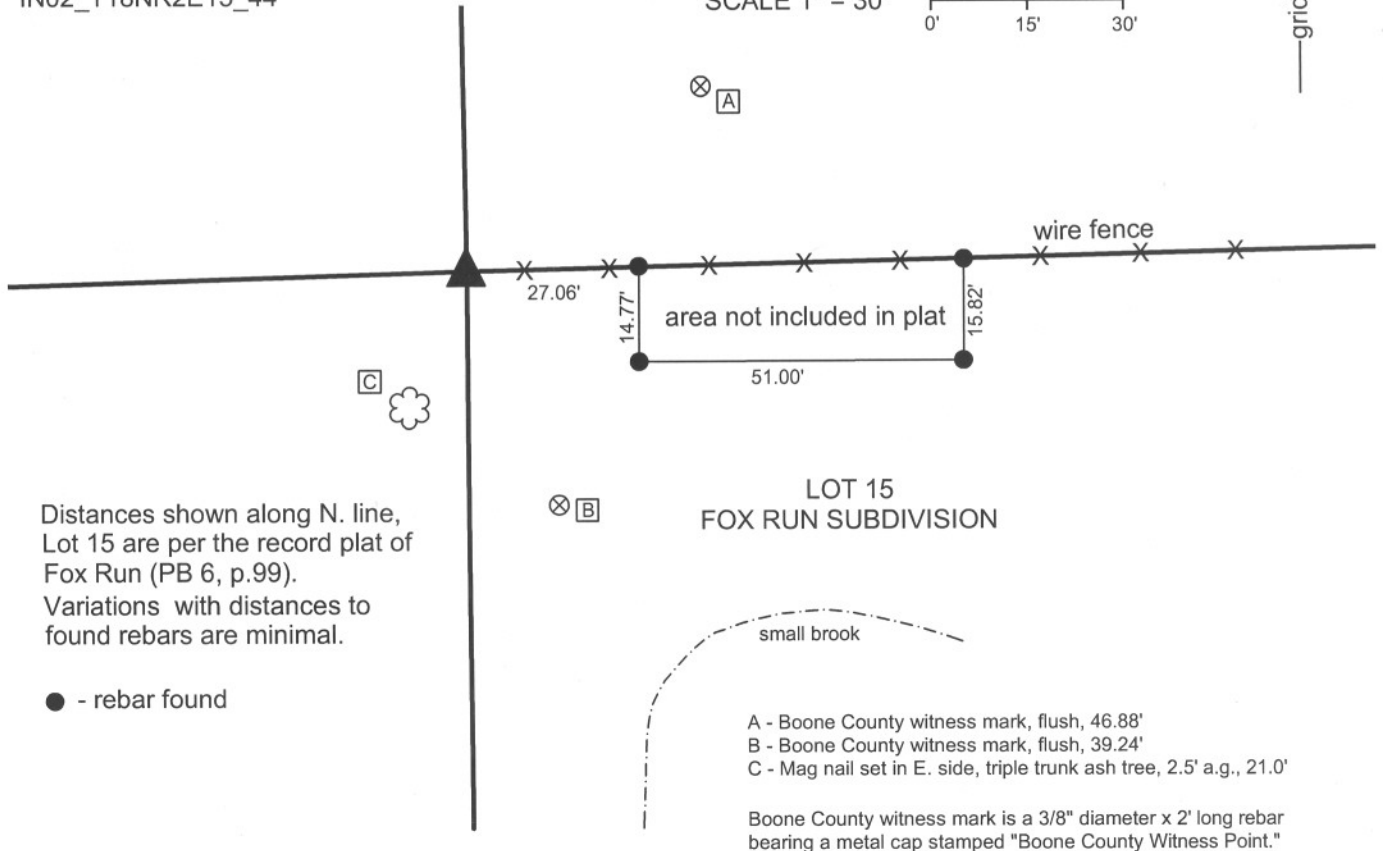
State Plane grid coordinates NAD83 (NSRS 2007):
 North: 1733720.27 East: 3178000.80 (U.S. survey feet)

Type of monument: Harrison, 4" disk 'Section Corner'
 Depth: Four inches above adjoining ground.

Indiana tie card references:
 IN02_T18NR2E14_36
 IN02_T18NR2E15_44

CORNER WITNESS DETAIL

SCALE 1" = 30'
 0' 15' 30'



Distances shown along N. line, Lot 15 are per the record plat of Fox Run (PB 6, p.99). Variations with distances to found rebars are minimal.

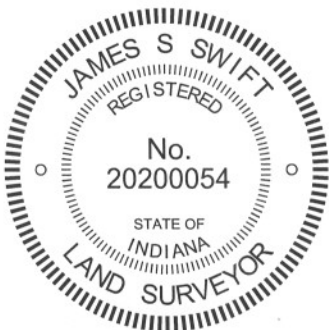
● - rebar found

LOT 15
 FOX RUN SUBDIVISION

- A - Boone County witness mark, flush, 46.88'
- B - Boone County witness mark, flush, 39.24'
- C - Mag nail set in E. side, triple trunk ash tree, 2.5' a.g., 21.0'

Boone County witness mark is a 3/8" diameter x 2' long rebar bearing a metal cap stamped "Boone County Witness Point."

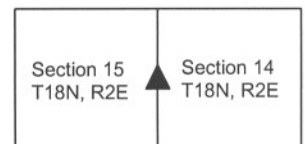
The harrison monument was set over a stone found and in place of a rebar found. A BCS record of April 20, 1883 states "Re Estab. from B.T. Stone 18x12x18 marked +." No recent BCS ties cards were found referencing this corner. This corner was excavated on May 20, 2009. Prior to excavation a 5/8 inch rebar with a metal cap stamped "Carl Anderson Prof Eng" was found protruding from a square concrete monument at the south edge of a wood corner post. Excavation revealed the record stone found directly below the rebar and concrete monument. The concrete monument was situated on top of the stone. The monument was removed and a distinct etched "+" is visible on the top of the stone. The top of the rebar had been very slightly (1 1/2 inch) northeast of the etched "+." A vertical piece of 12 inch diameter HDPE smooth core storm pipe was set over the top of the stone, the top of the stone was encased in concrete and the harrison monument was set in the concrete protruding from the top of the section of pipe. The harrison monument was set at the horizontal position of the rebar, directly above the stone. The wood corner post was left in place. This corner was originally established as a wood post in July, 1821.



Kenneth E. Hedge
 Kenneth E. Hedge, County Surveyor

James S. Swift
 James S. Swift, IN LS 20200054
 July 14, 2010, Revised January 15, 2013

Union Township



PHOTOGRAPHIC DOCUMENTATION

Date of photography: May 19-20, 2009

The post and rebar/concrete monument prior to excavation.



The stone exposed under the concrete monument.



The stone from above and south.



The post and stone from above.



For details and documentation, refer to related sheet "Section Corner Record."

SECTION CORNER RECORD

SE 300-900

BOONE COUNTY SURVEYOR'S OFFICE

State Plane grid coordinates NAD83 (NSRS 2007):

North: 1730903.33 East: 3172645.31 (U.S. survey feet)

Type of monument: Harrison, 4" disk 'Section Corner'

Depth: One inch below adjacent road surface

Indiana tie card references:

IN02_T18NR2E15_72

IN02_T18NR2E16_80

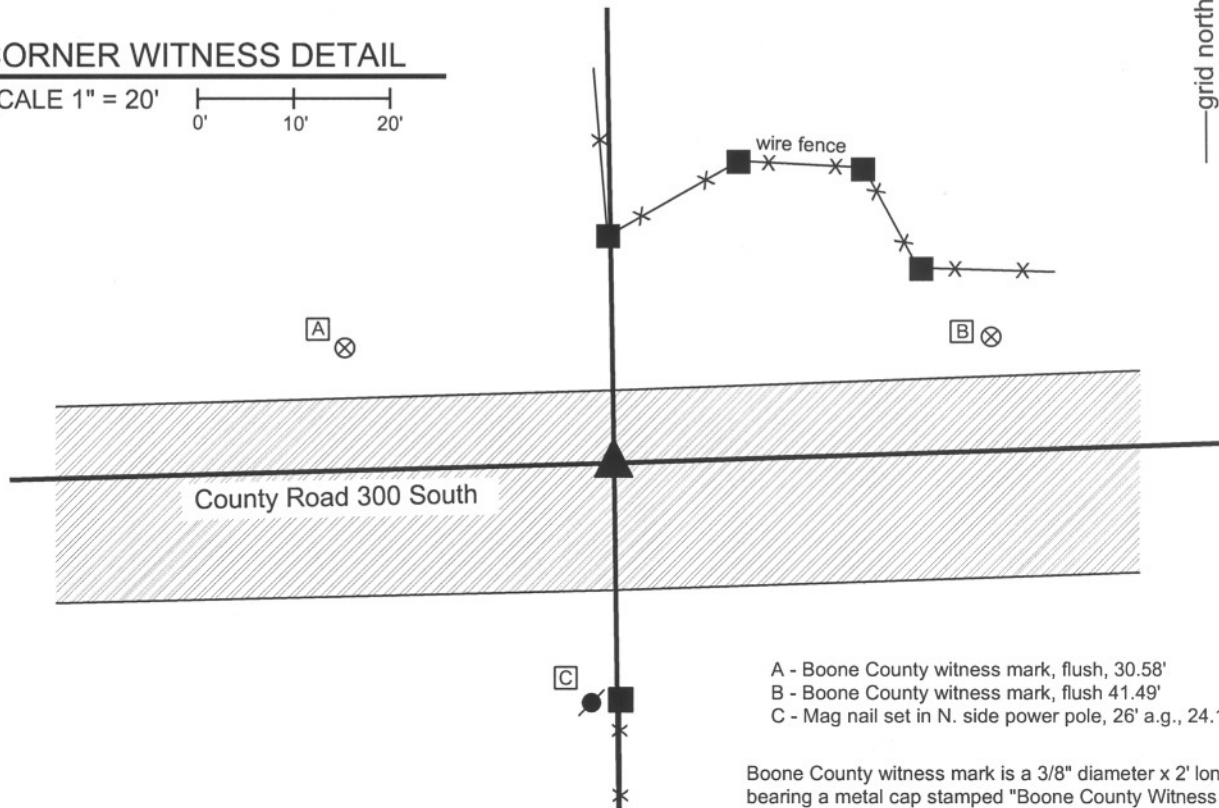
IN02_T18NR2E21_08

IN02_T18NR2E22_00



CORNER WITNESS DETAIL

SCALE 1" = 20'



The harrison monument was set in place of a mag nail found.

A BCS record of August 13-14, 1866 states "Reestablished. Set a Rock 12.8 by 8 in marked +. One under it 8.5 by 3 in marked + on top." No BCS tie cards were found for this corner. Excavation for this corner occurred on August 11, 2008. Prior to excavation a mag nail was visible 3 inches deep in a hole in the asphalt. Excavation revealed another, smaller nail directly below the mag. Excavation also revealed modern sub-base material below the asphalt. This appears to be an area of slight cut and it is considered most likely that the stone was removed during the previous construction. The two nails were located slightly north of the center of the road in line with the old corner post to the north and at the northerly prolongation of the old fence to the south. The harrison monument was set in the position of the nails. The area of excavation was 5 feet E-W by 6.5 feet N-S, centered on the nail E-W and extending to 4.5 feet south of the nail.

This corner was originally established as a wood post in July, 1821.



Kenneth E. Hedge
Kenneth E. Hedge, County Surveyor

Eagle Twp

James S. Swift
James S. Swift, IN LS 20200054

Union Twp

March 18, 2009

Section 16 T18N, R2E	Section 15 T18N, R2E
Section 21 T18N, R2E	Section 22 T18N, R2E

SECTION CORNER RECORD

SE 300-950

BOONE COUNTY SURVEYOR'S OFFICE

State Plane grid coordinates NAD83 (NSRS 2007):
North: 1730988.18 East: 3175350.09 (U.S. survey feet)

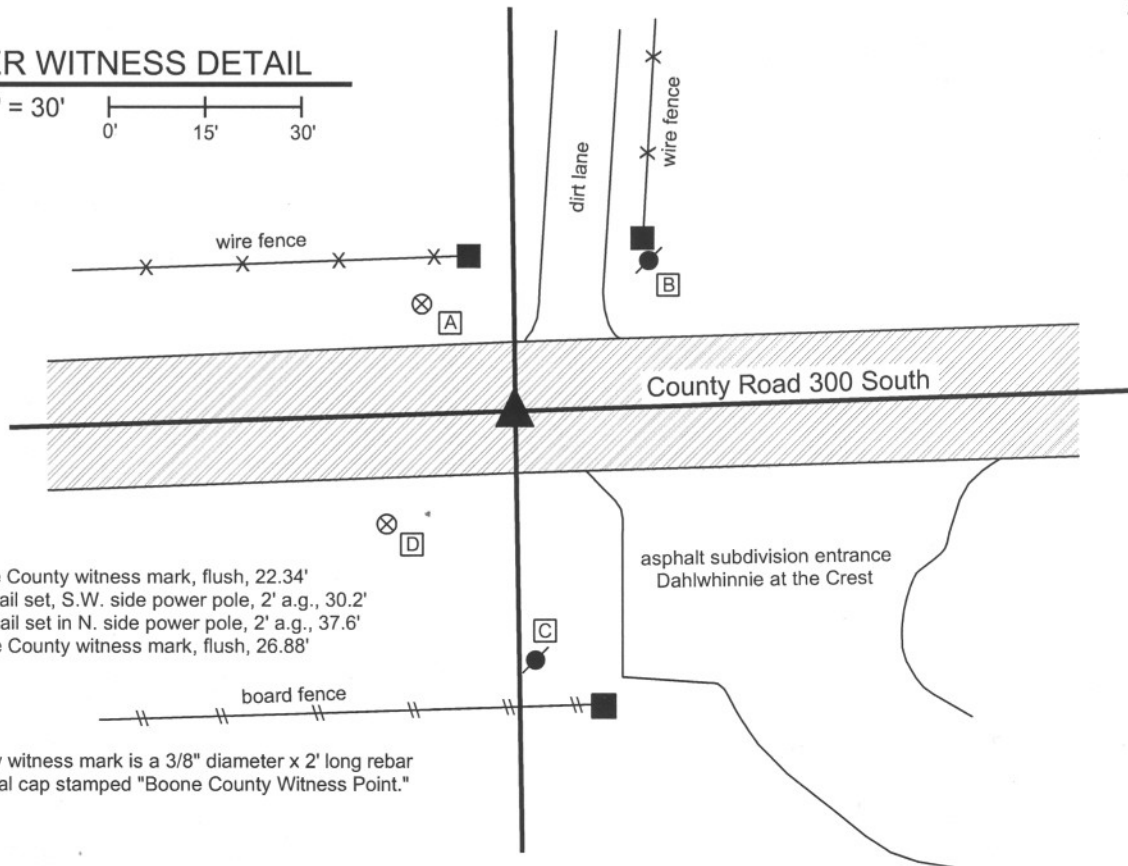
Type of monument: Harrison, 4" disk 'Section Corner'
Depth: One inch below adjacent road surface

Indiana tie card references:
IN02_T18NR2E15_76
IN02_T18NR2E22_04



CORNER WITNESS DETAIL

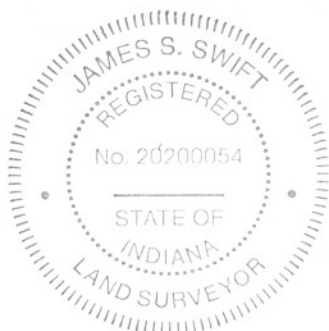
SCALE 1" = 30'



- A - Boone County witness mark, flush, 22.34'
- B - Mag nail set, S.W. side power pole, 2' a.g., 30.2'
- C - Mag nail set in N. side power pole, 2' a.g., 37.6'
- D - Boone County witness mark, flush, 26.88'

Boone County witness mark is a 3/8" diameter x 2' long rebar bearing a metal cap stamped "Boone County Witness Point."

The harrison monument was set over the etched "+" on the top of a stone found. A BCS record of August 13-14, 1866 states "Reestablished. Set a rock 18.13 by 13 marked + on top..." A tie card provided by Paul I. Cripe, Inc. which is not dated but is referenced to Survey Book 1, page 1 (certified January 25, 1989, recorded April 28, 1989) states "RRS with 'x' over stone with '+'." This corner was excavated on August 7, 2008. Prior to excavation, a mag nail was visible approximately 2 inches deep in a hole in the asphalt. Excavation revealed a railroad spike at 6 inches deep, slightly north and west of the mag nail. The stone was found at 15 inches deep with an etched "+" on top. The railroad spike was directly over the "+" with the top 10 inches of the stone exposed, the stone measured 13 inches by 11 inches. The harrison monument was set over the etched "+," which is also in place of the railroad spike. This corner was originally established as a wood post in July, 1821.



Kenneth E. Hedge
Kenneth E. Hedge, County Surveyor

James S. Swift
James S. Swift, IN LS 20200054

March 11, 2009

Union Township

Section 15
T18N, R2E

Eagle Township

Section 22
T18N, R2E

PHOTOGRAPHIC DOCUMENTATION

Date of photography: August 7, 2008

Corner stone - top exposed.



Corner stone from above, wet.



Corner stone - close up.



Corner stone - close up with etched "+" enhanced for ease of visual detection.



For details and documentation, refer to related sheet "Section Corner Record."