

SECTION CORNER RECORD

SW 250-200

BOONE COUNTY SURVEYOR'S OFFICE

State Plane grid coordinates NAD83 (2011):
North: 1732250.64 East: 3114265.00 (U.S. survey feet)

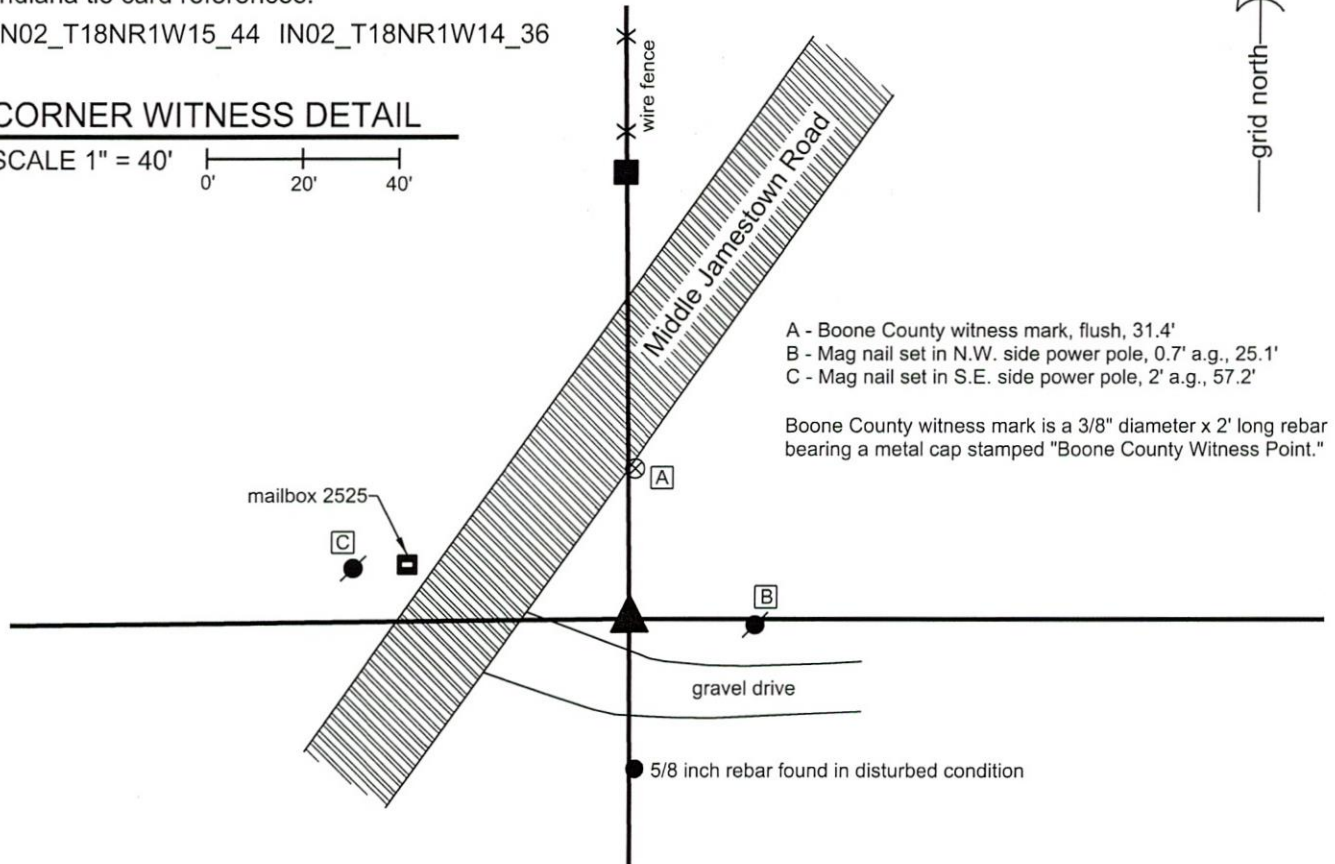
Type of monument: Harrison, 4" disk 'Section Corner'
Depth: Flush with adjacent ground

Indiana tie card references:
IN02_T18NR1W15_44 IN02_T18NR1W14_36

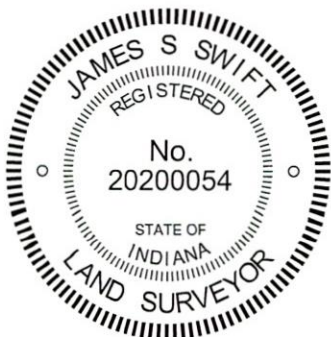


CORNER WITNESS DETAIL

SCALE 1" = 40'
0' 20' 40'

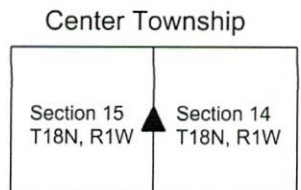


The Harrison Monument was set in place of a 5/8 inch diameter rebar with plastic cap stamped "CARTER S0350."
 No specific descriptions of this corner were found in the BCS Surveyor's Record, though the corner is mentioned as the terminal point for records of 1857 for both sections 14 and 15.
 The found rebar was in line with an ancient fence to the north, on the north side of Middle Jamestown Road. The rebar was also in line with occupation to the east in the form of a field/grass division and a line of power poles and appeared to mark not just the section line but also the north edge of a 30 foot strip for a drive associated with the property to the east. Another 5/8 inch diameter rebar was found approximately 31 feet south of the Carter rebar. The southern rebar is substantially disturbed, but fits generally with the deed call of 30.51 feet between the quarter section corner and a private property corner as recited in Instrument 201300000679 in the Office of the Boone County Recorder.
 Manual excavation and extensive probing in the vicinity of the Carter rebar yielded no further evidence of the corner. The Carter rebar was held as marking the corner and a Harrison Monument was set in the same position on September 15, 2017. The Carter rebar was removed during installation of the Harrison monument. The southerly rebar was left in place, as found.
 This corner was originally established as a wood post in 1820.



Kenneth E. Hedge
Kenneth E. Hedge, County Surveyor

James S. Swift
James S. Swift, IN LS 20200054
September 19, 2017



SECTION CORNER RECORD

SW 250-300

BOONE COUNTY SURVEYOR'S OFFICE

State Plane grid coordinates NAD83 (2011):

North: 1732187.17 East: 3108988.35 (U.S. survey feet)

Type of monument: 5/8" Rebar with metal cap

Depth: Fourteen inches below adjacent ground

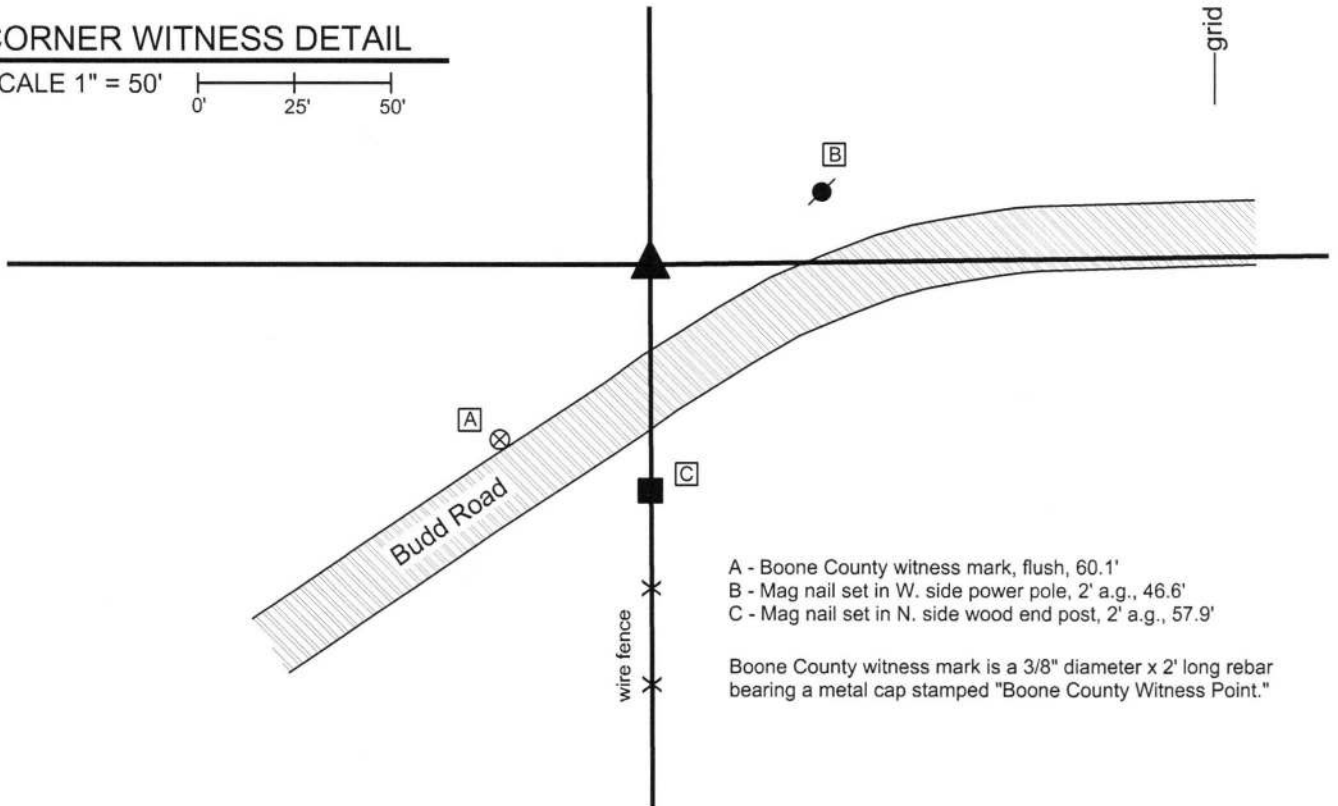
Indiana tie card references:

IN02_T18NR1W16_44 IN02_T18R1W15_36



CORNER WITNESS DETAIL

SCALE 1" = 50'



- A - Boone County witness mark, flush, 60.1'
- B - Mag nail set in W. side power pole, 2' a.g., 46.6'
- C - Mag nail set in N. side wood end post, 2' a.g., 57.9'

Boone County witness mark is a 3/8" diameter x 2' long rebar bearing a metal cap stamped "Boone County Witness Point."

The rebar was set at a calculated position.

A BCS record of August 8, 1882 states, with respect to this corner, "Reest by measurement from C and d in Sec. 16. Rock 20.18.18 + on top." No recent BCS tie cards were found referencing this corner.

No metal or other artificial monuments were found marking the corner. A probable position for the corner was computed by creating a theoretical intersection point of the prolongations of fences to the east and south. The fence to south exists between the corner approximately one-half mile south and an end post on the south side of Budd Road, 60 feet south of the subject corner. The fence to the east exists between the corner approximately one-half mile east of the subject corner and an end post approximately one-quarter mile east of the subject corner. The standing fence is considered more reliable evidence of the east-west section line than the short east-west section of Budd Road. Extensive probing and manual excavation in the vicinity of the probable position yielded no further evidence of the corner. The stone referenced in the 1882 record was not found. The probable position for the corner was held, based on the best available physical evidence of the relevant section lines. A 30 inch length of 5/8 inch diameter rebar was set at this position, buried 14 inches deep in a tilled field.

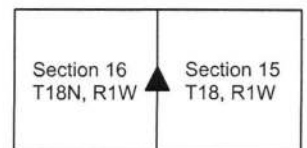
This corner was originally established as a wood post in 1820.



Kenneth E. Hedge
Kenneth E. Hedge, County Surveyor

James S. Swift
James S. Swift, IN LS 20200054
March 23, 2017

Center Township



SECTION CORNER RECORD

SW 300-200

BOONE COUNTY SURVEYOR'S OFFICE

State Plane grid coordinates NAD83 (2011):

North: 1729601.45 East: 3114284.62 (U.S. survey feet)

Type of monument: 5/8" Rebar with metal cap (see notes)

Depth: Four inches above adjoining ground

Indiana tie card references:

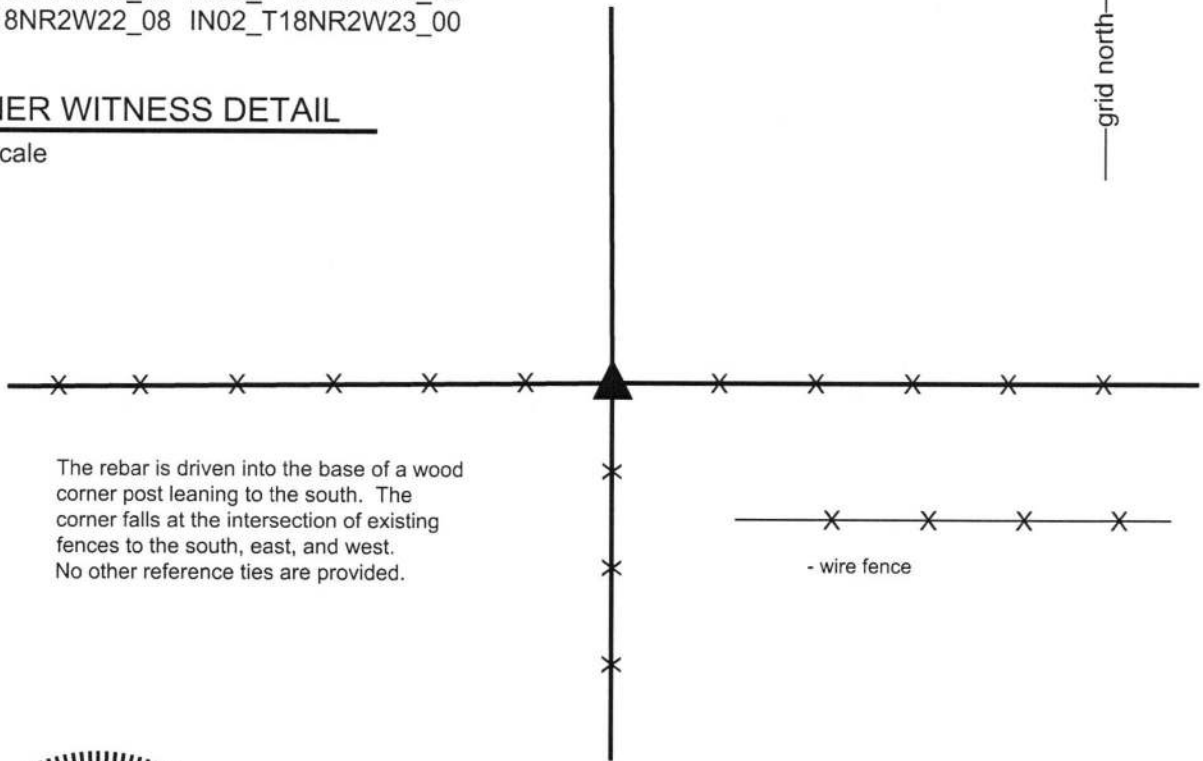
IN02_T18NR2W15_80 IN02_T18NR2W14_72

IN02_T18NR2W22_08 IN02_T18NR2W23_00



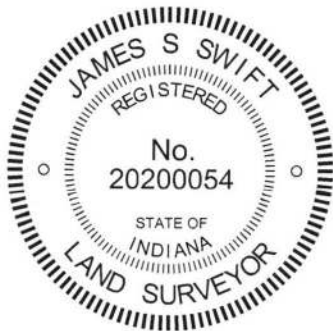
CORNER WITNESS DETAIL

Not to scale



The rebar is driven into the base of a wood corner post leaning to the south. The corner falls at the intersection of existing fences to the south, east, and west. No other reference ties are provided.

- wire fence



The rebar was driven into the subterranean base of a wood corner post.

No specific descriptions of this corner were found in the BCS Surveyor's Record nor were any recent BCS tie cards found referencing this corner.

Substantial local evidence of the corner exists in the form of a wood corner post at the intersection of old, well established fences to the south, east and west. The position of the post works well with respect to proximate corners. Manual excavation around the base of the post on October 18, 2016 yielded neither stone nor other evidence of the corner found. The post was accepted as providing the best available evidence of the corner and was held as marking the corner. The post leans to the south. A 30 inch length of 5/8 inch diameter rebar was driven vertically at the approximate position of the base of the post. The rebar was driven into the base of the post below ground. Above ground, the top of the rebar and the metal cap appear to be at the north edge of the leaning post. As the rebar is intended to occupy the same position of the base of the post, the rebar is held as marking the specific location of the corner.

This corner was established as a wood post in 1820.


Kenneth E. Hedge, County Surveyor


James S. Swift, IN LS 20200054

March 23, 2017

Jefferson
Township

Section 15 T18N, R2W	Section 14 T18N, R2W
Section 22 T18N, R2W	Section 23 T18N, R2W

Jackson
Township

SECTION CORNER RECORD

SW 300-300

BOONE COUNTY SURVEYOR'S OFFICE

State Plane grid coordinates NAD83 (2011):

North: 1729546.06 East: 3109001.84 (U.S. survey feet)

Type of monument: Harrison, 4" disk 'Section Corner'

Depth: Four inches above adjacent grade

Indiana tie card references:

IN02_T18NR1W16_80 IN02_T18NR1W15_72

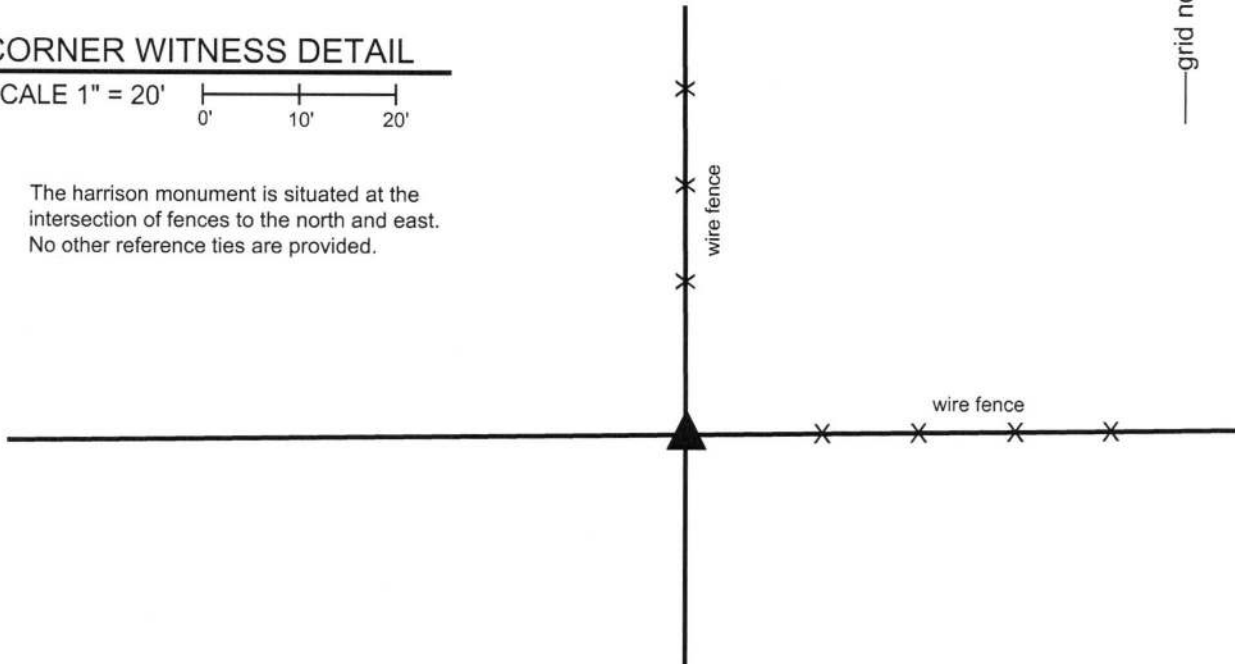
IN02_T18NR1W21_08 IN02_T18NR1W22_00



CORNER WITNESS DETAIL

SCALE 1" = 20'

The Harrison monument is situated at the intersection of fences to the north and east. No other reference ties are provided.



The Harrison monument was set in place of a wood corner post found.

No specific descriptions of this corner were found in the BCS Surveyor's Record nor were any recent BCS tie cards found referencing this corner.

Substantial local evidence of the corner was found in September, 2016 in the form of an ancient wood corner post at the intersection of old, well established fences to the north and east. The position of the post fits well with respect to the relative positions of proximate corners. Manual excavation around the base of the post on September 29, 2016 yielded numerous rocks found, none of which appeared to have been set for the specific purpose of marking the corner. A rock to the south of the post was found on the surface of the ground in a horizontal position. A rock to the west of the post was found to have a distinct high point but the remainder of the rock was found to be quite massive with almost all of the rock buried. Neither of these rocks, nor any of the smaller rocks found in this vicinity, could be positively identified as marking the corner. The post was held as the best evidence of the original location of the corner. The post was removed during excavation and a Harrison monument was set in place of the post. The monument is anchored to the large rock to the west. The rock to the south was positioned such that it would provide protection for the monument from agricultural machinery working near the corner.

This corner was originally established as a wood post in 1820.

Kenneth E. Hedge, County Surveyor

James S. Swift, IN LS 20200054
March 23, 2017



Jefferson Township

Jackson Township

Marion Township

Section 16 T18N, R1W	Section 15 T18N, R1W
Section 21 T18N, R1W	Section 22 T18N, R1W

PHOTOGRAPHIC DOCUMENTATION

Date of photography: 9/27/2016-10/3/2016

The corner prior to excavation.
View of the leaning corner post from the south.



The post removed from the ground and the hole where the post previously stood.



A vertical section of storm pipe, to be filled with concrete to support the Harrison monument.



The final monument, viewed from the south.



For details and documentation, refer to related sheet "Section Corner Record."