

# SECTION CORNER RECORD

SE 200-300

## BOONE COUNTY SURVEYOR'S OFFICE

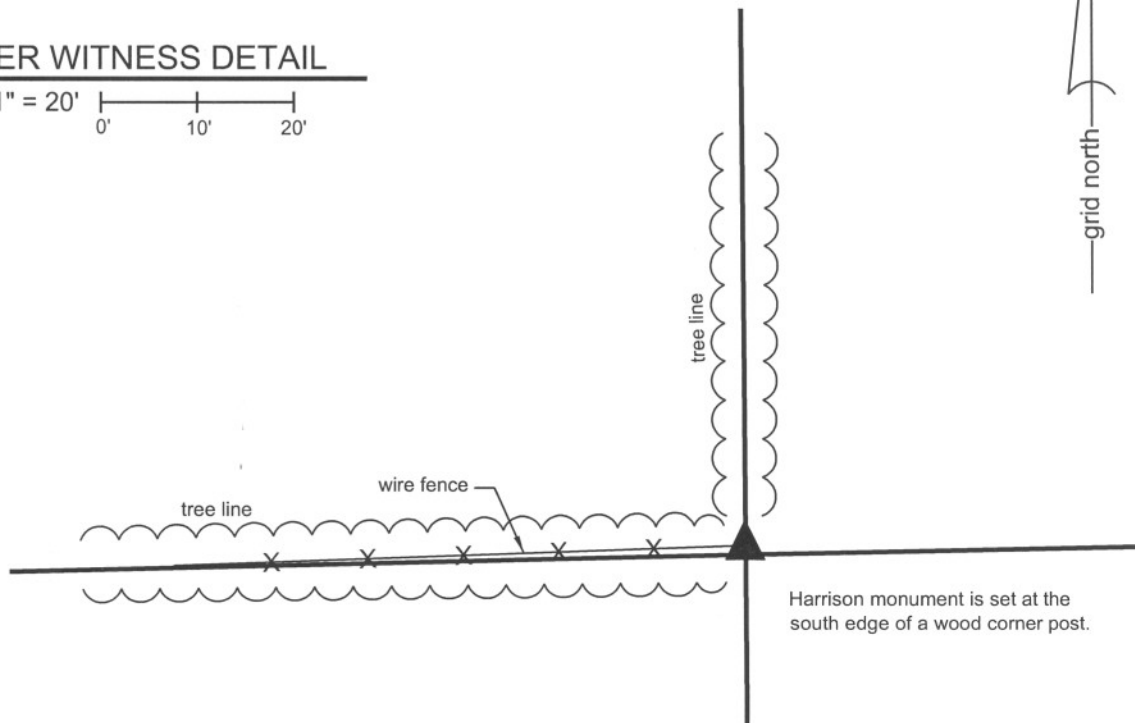
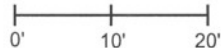
State Plane grid coordinates NAD83 (NSRS 2007):  
North: 1735442.39 East: 3140559.96 (U.S. survey feet)

Type of monument: Harrison, 4" disk 'Section Corner'  
Depth: three inches above adjacent ground

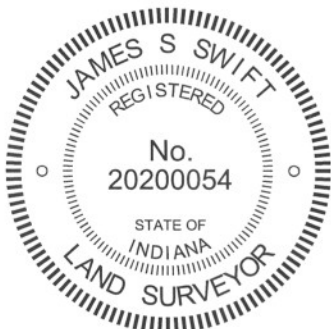
Indiana tie card references:  
IN02\_T18NR1E09\_80 IN02\_T18NR1E10\_72  
IN02\_T18NR1E16\_08 IN02\_T18NR1E15\_00

### CORNER WITNESS DETAIL

SCALE 1" = 20'



The harrison monument was set in place of a harrison monument found.  
A BCS record of October 22, 1886 states "Found from roots of Oak set a stone at cor." A BCS tie card dated November 28, 2005 shows the corner as a harrison monument with no documentation of source.  
This corner was excavated and monumented on October 22, 2010. A harrison monument was found at the southwest corner of the base of a wood corner post per the 2005 tie card. Numerous stones of a variety of sizes were found around the corner post, none of which had specific identifiable markings or which appeared to represent the section corner. A large rock found at the southeast corner of the post appeared to be a brace rock. The 2005 tie card does not document why the harrison monument was set at the base of the corner post or why the post itself was not held as the corner. Given the presence of the harrison monument and its immediate proximity to the post, the monument was held as the corner. The monument was reset in the same position in a more stable manner.  
The land adjacent to this corner is utilized as agricultural land and no acceptable witness ties were available. An orange fiberglass witness post was set at the side of the harrison monument to facilitate detection by field surveyors.  
This corner was originally established as a wood post in 1820.



*Kenneth E. Hedge*  
Kenneth E. Hedge, County Surveyor

*James S. Swift*  
James S. Swift, IN LS 20200054  
July 25, 2011

Center Township

Section 9 T18N, R1E	Section 10 T18N, R1E
Section 16 T18N, R1E	Section 15 T18N, R1E

# SECTION CORNER RECORD

SE 200-350

## BOONE COUNTY SURVEYOR'S OFFICE

State Plane grid coordinates NAD83 (NSRS 2007):

North: 1735495.75 East: 3143205.84 (U.S. survey feet)

Type of monument: Harrison, 4" disk 'Section Corner'

Depth: flush with adjacent ground

Indiana tie card references:

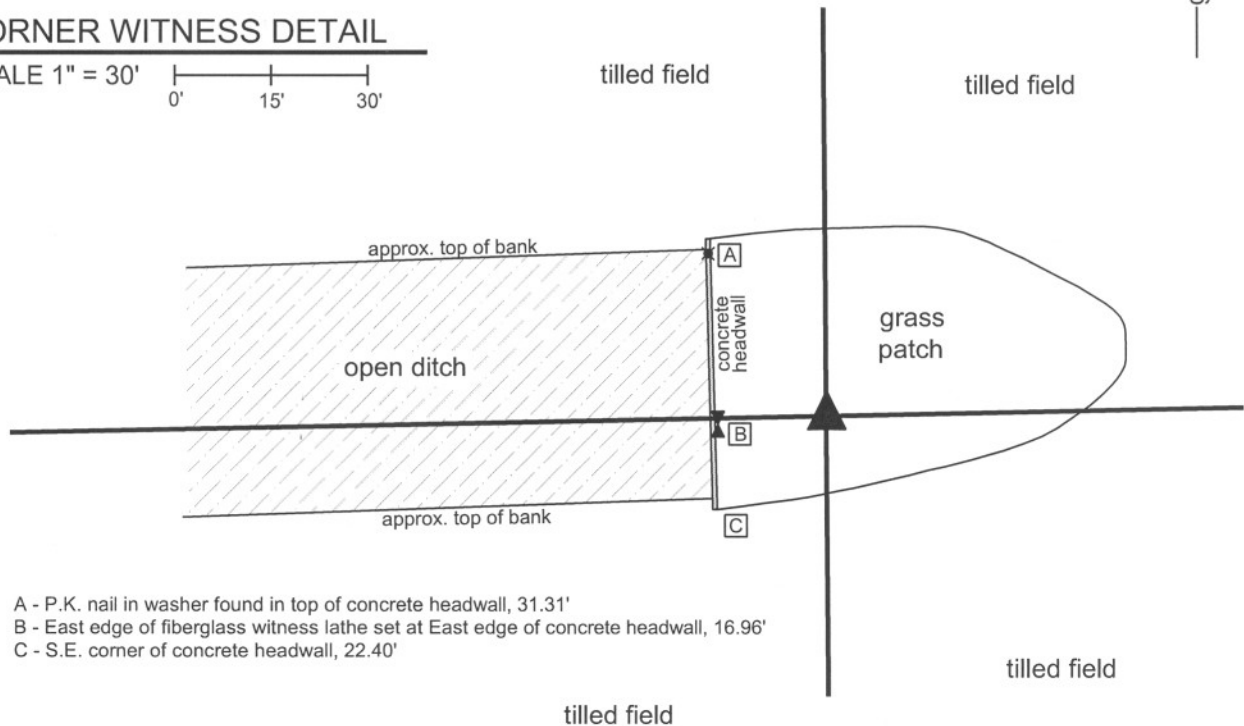
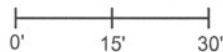
IN02\_T18NR1E10\_76

IN02\_T18NR1E15\_04



### CORNER WITNESS DETAIL

SCALE 1" = 30'



A - P.K. nail in washer found in top of concrete headwall, 31.31'

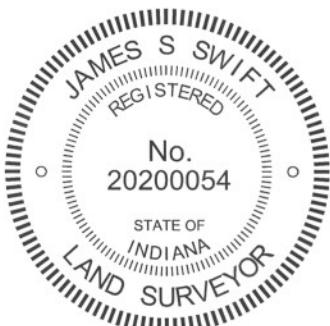
B - East edge of fiberglass witness lathe set at East edge of concrete headwall, 16.96'

C - S.E. corner of concrete headwall, 22.40'

The harrison monument was set in place of a harrison monument found.

A BCS record of March 24-25, 1913 states "Set rock 12x1215 +." A BCS tie card dated November 28, 2005 shows the corner as a harrison monument with no documentation of the source. This corner falls in an area that is known to have been disturbed by excavation activities associated with the adjacent open ditch. It is not considered likely that a corner stone or other evidence survived the excavation in this area. The existing harrison monument was accepted as the best available evidence of the corner. The harrison was removed and reset in a more stable manner.

This corner was originally established as a wood post in 1820.



*Kenneth E. Hedge*  
Kenneth E. Hedge, County Surveyor

*James S. Swift*  
James S. Swift, IN LS 20200054  
July 25, 2011

Center Twp

Section 10  
T18N, R1E

Section 15  
T18N, R1E

# SECTION CORNER RECORD

# SE 200-400

## BOONE COUNTY SURVEYOR'S OFFICE

State Plane grid coordinates NAD83 (NSRS 2007):  
North: 1735548.72 East: 3145851.54 (U.S. survey feet)

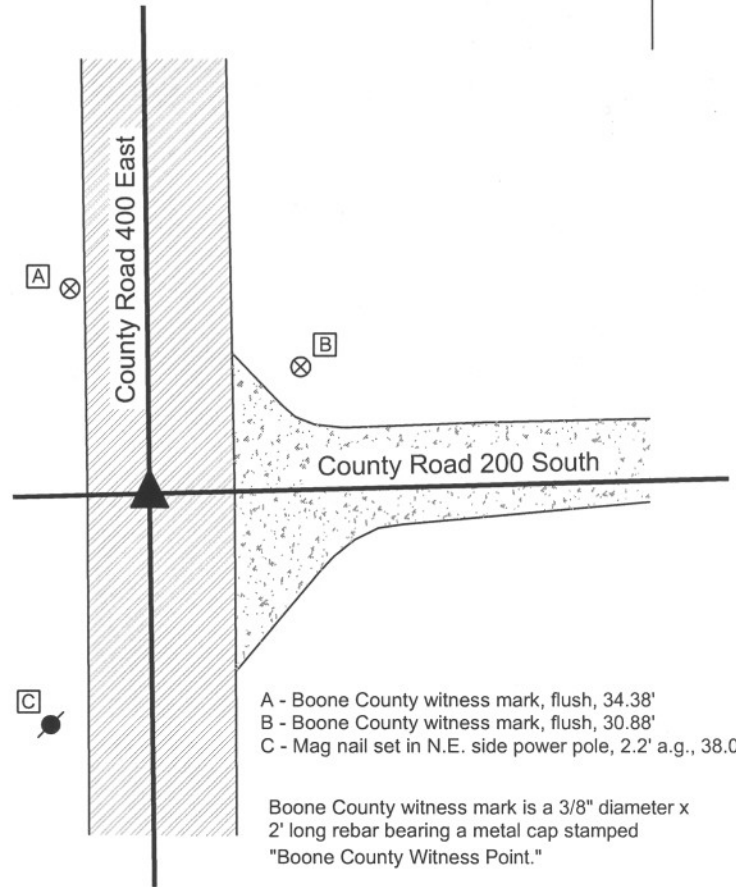
Type of monument: Harrison, 4" disk 'Section Corner'  
Depth: One inch below adjacent road surface

Indiana tie card references:  
IN02\_T18NR1E10\_80 IN02\_T18NR1E11\_72  
IN02\_T18NR1E14\_00 IN02\_T18NR1E15\_08

### CORNER WITNESS DETAIL

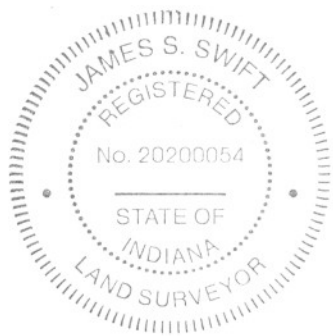
SCALE 1" = 30'  
0' 15' 30'

The harrison monument was set in the position of a harrison monument found above a railroad rail.  
A BCS record of September 21, 1868 states "Reestablished from stump of Oak. Set stake." A BCS record of March 24-25, 1913 states "Set rock 7x14x16 +". A BCS tie card dated November, 1970 states "no stone" and shows an "R" at the position of the corner, likely indicating a railroad rail. A BCS tie card dated October 21, 2005 calls for a harrison monument with no documentation of source.  
This corner was excavated on June 10, 2008. Prior to excavation the harrison monument was visible 1 inch below the surrounding road surface. The rail was found at 8 inches deep, below the harrison. A stone was found at 9 inches deep, east of the rail. The stone measures approximately the record dimensions of 7x14x16, though no specific markings were discernable. The stone was found lying horizontally (as opposed to the typical vertical position of stones set by county surveyors in that era) at the top of the clay layer, within the gravel base of the road. The stone was not embedded in the clay. It appeared that the stone may have been disturbed in its position, presumably by a road grader. Minimal certainty could be attached to the situation of the stone with respect to depth, stability and markings. While the 1970 record was erroneous in the statement "no stone" it was observed that the rail had been placed essentially along the west side of the stone. The rail was as close to the stone as the stone may have been to its original position. Given the uncertainties with respect to the stone and the general acceptance of the rail as the corner, the rail was held as marking the corner and the harrison was set in the position of the rail and previous harrison. The stone was removed.  
This corner was originally established as a wood post in June, 1820.



- A - Boone County witness mark, flush, 34.38'
- B - Boone County witness mark, flush, 30.88'
- C - Mag nail set in N.E. side power pole, 2.2' a.g., 38.00'

Boone County witness mark is a 3/8" diameter x 2' long rebar bearing a metal cap stamped "Boone County Witness Point."



*Kenneth E. Hedge*  
Kenneth E. Hedge, County Surveyor

*James S. Swift*  
James S. Swift, IN LS 20200054

March 11, 2009

Center Twp	Worth Twp
Section 10 T18N, R1E	Section 11 T18N, R1E
Section 15 T18N, R1E	Section 14 T18N, R1E

# SECTION CORNER RECORD

SE 250-300

## BOONE COUNTY SURVEYOR'S OFFICE

State Plane grid coordinates NAD83 (NSRS 2007):

North: 1732786.60 East: 3140580.71 (U.S. survey feet)

Type of monument: Harrison, 4" disk 'Section Corner'

Depth: three inches above adjacent ground

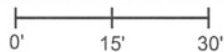
Indiana tie card references:

IN02\_T18NR1E15\_36

IN02\_T17NR2E15\_44

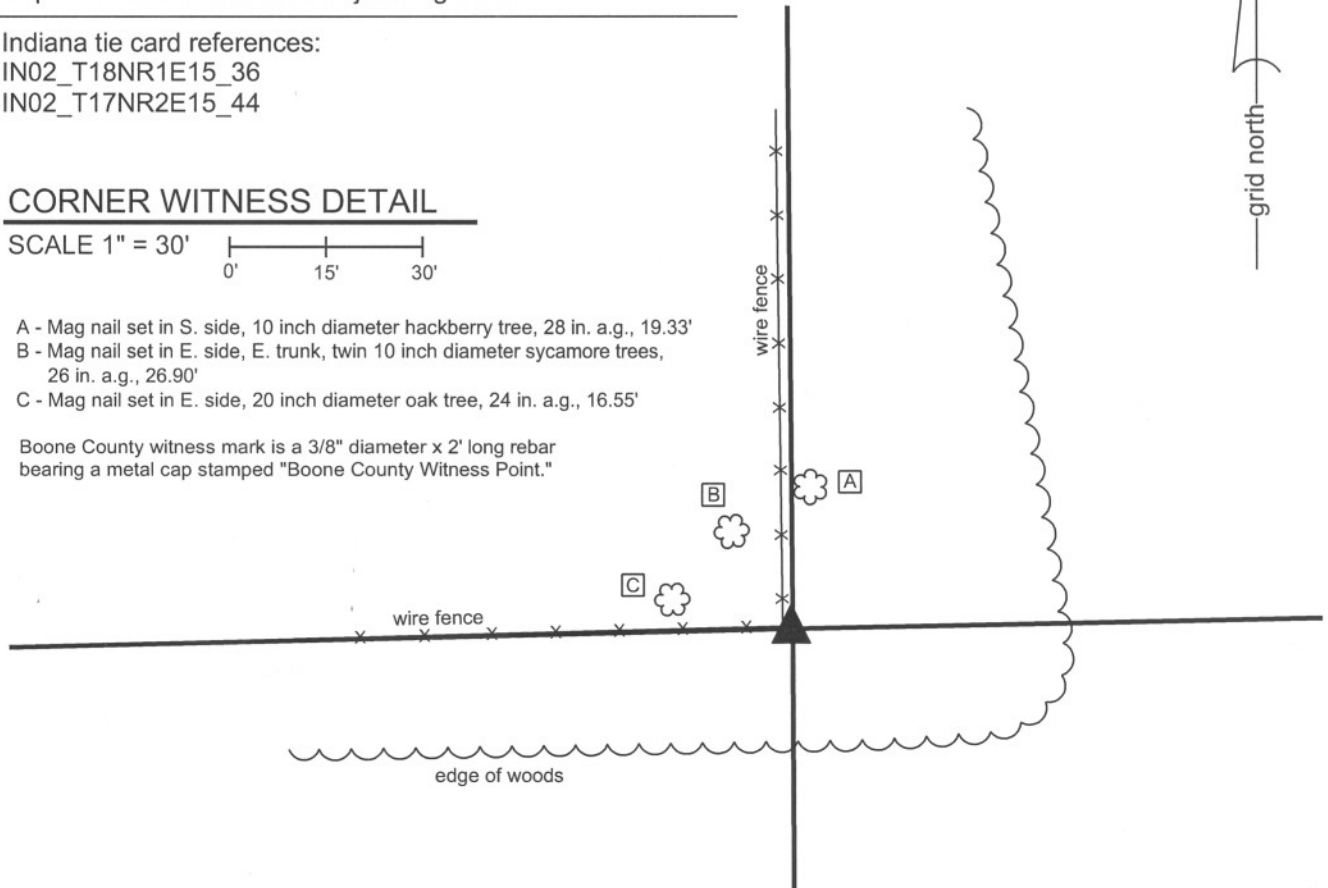
### CORNER WITNESS DETAIL

SCALE 1" = 30'



- A - Mag nail set in S. side, 10 inch diameter hackberry tree, 28 in. a.g., 19.33'
- B - Mag nail set in E. side, E. trunk, twin 10 inch diameter sycamore trees, 26 in. a.g., 26.90'
- C - Mag nail set in E. side, 20 inch diameter oak tree, 24 in. a.g., 16.55'

Boone County witness mark is a 3/8" diameter x 2' long rebar bearing a metal cap stamped "Boone County Witness Point."

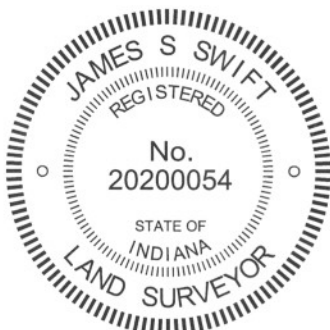


The harrison monument was set over a stone found.

An undated, unattributed record in the BCS Surveyor's Record states "re-established from stump of Walnut. Set Rock 11x8x5 +". No modern BCS tie cards were found referencing this corner.

This corner was excavated on October 21, 2010. Prior to excavation, a 5/8 inch diameter rebar was found adjacent to a wood corner post. Excavation revealed a stone found adjacent to and southeast of the rebar and post. The stone is approximately 17 inches N-S by 21 inches E-W by 10 inches tall, and the top of the stone was found at 2 inches below the surface of the ground. The stone has a large, flat horizontal top with a distinct "+" etched in the top at the approximate center of the flat area. This is not the stone mentioned in the undated record. Excavation of the area around the post did not reveal that stone. The stone which was found does not appear to be a brace rock, does appear to be intended to mark the corner and was accepted as the best available evidence of the corner. The stone was left in place. The top of the stone was encased in concrete and a harrison monument was set directly above the etched "+" on the top of the stone.

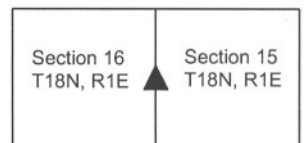
This corner was originally established as a wood post in 1820.



*Kenneth E. Hedge*  
Kenneth E. Hedge, County Surveyor

*James S. Swift*  
James S. Swift, IN LS 20200054  
July 25, 2011

Center Township



PHOTOGRAPHIC DOCUMENTATION

Date of photography: October 19-21, 2010

View of the stone as first exposed.



The stone exposed and the broken-off corner post.



The stone, post and a smaller stone found next to the marked corner stone.



For details and documentation, refer to related sheet "Section Corner Record."

# SECTION CORNER RECORD

## BOONE COUNTY SURVEYOR'S OFFICE

SE 250-400

State Plane grid coordinates NAD83 (NSRS 2007):  
 North: 1732892.10 East: 3145880.76 (U.S. survey feet)

Type of monument: Harrison, 4" disk 'Section Corner'  
 Depth: One inch below adjacent road surface

Indiana tie card references:  
 IN02\_T18NR1E14\_36  
 IN02\_T18NR1E15\_44

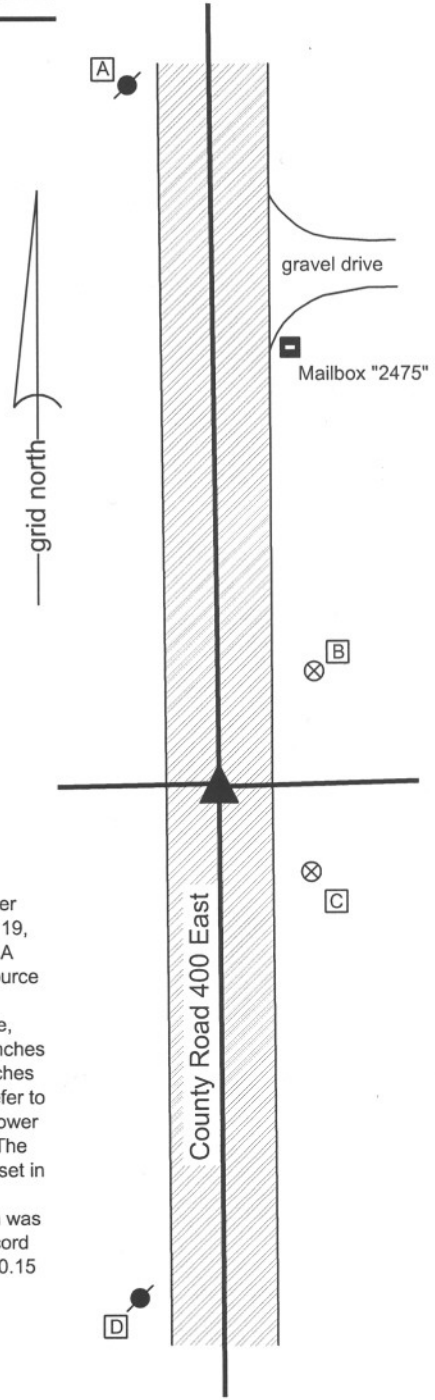
### CORNER WITNESS DETAIL

SCALE 1" = 40'

- A - Mag nail set in SE side power pole, 2' a.g., 145.8'
- B - Boone County witness mark, flush 31.22'
- C - Boone County witness mark, flush, 26.20'
- D - Mag nail set in NE side power pole, 2' a.g., 106.4'

Boone County witness mark is a 3/8" diameter x 2' long rebar bearing a metal cap stamped "Boone County Witness Point."

The harrison monument was set in the position of a railroad rail found.  
 A BCS record of March 6, 1882 states "Found from original witness tree. Found stake. Corner Rock marked + Wit rock mark W East 25 links. West 25 links." A BCS tie card dated March 19, 1968 states "found stone" and shows an "R" at the corner, likely indicating a railroad rail set. A BCS tie card dated November 29, 2005 shows the corner as a harrison monument with no source documentation.  
 This corner was excavated on June 11, 2008. A harrison monument was found at the surface, disturbed and leaning towards the north. Excavation revealed an iron pipe approximately 6 inches deep 0.25 foot N and 0.3 foot W of the harrison. Excavation also revealed a railroad rail 9 inches deep 0.55 foot S and 0.15 foot E of the harrison. Both monuments were removed. Please refer to the attached photographic documentaion. The harrison had been situated between the two lower monuments, approximately in the middle. Further excavation yielded no more monuments. The record stone was not found. It is most likely that the stone was removed in 1968 and the rail set in its position, as was a common practice by BCS field crews at that time. This conclusion is supported by the "R" noted next to the corner. With no documentation as to why the harrison was set where it was, the railroad rail was accepted as the best evidence of the location of the record stone. The new harrison monument was set in place of the railroad rail, 0.55 foot South and 0.15 foot East of the previous, disturbed harrison from 2005.  
 This corner was originally established as a wood post in June, 1820.



*Kenneth E. Hedge*  
 Kenneth E. Hedge, County Surveyor

*James S. Swift*  
 James S. Swift, IN LS 20200054

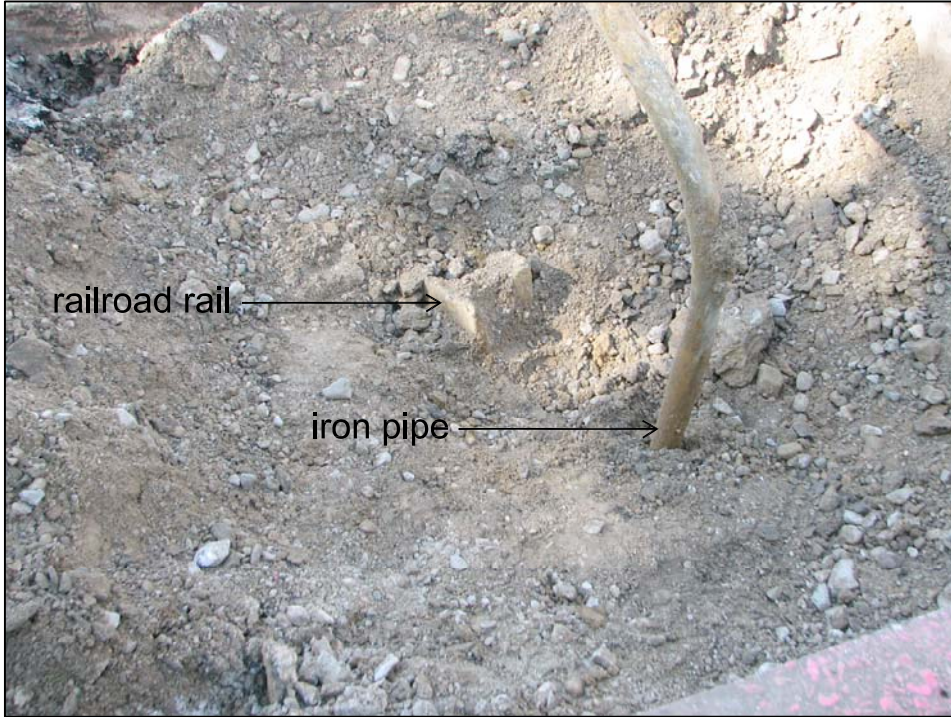
March 11, 2009

Center Twp	Worth Twp
Section 15 T18N, R1E	Section 14 T18N, R1E

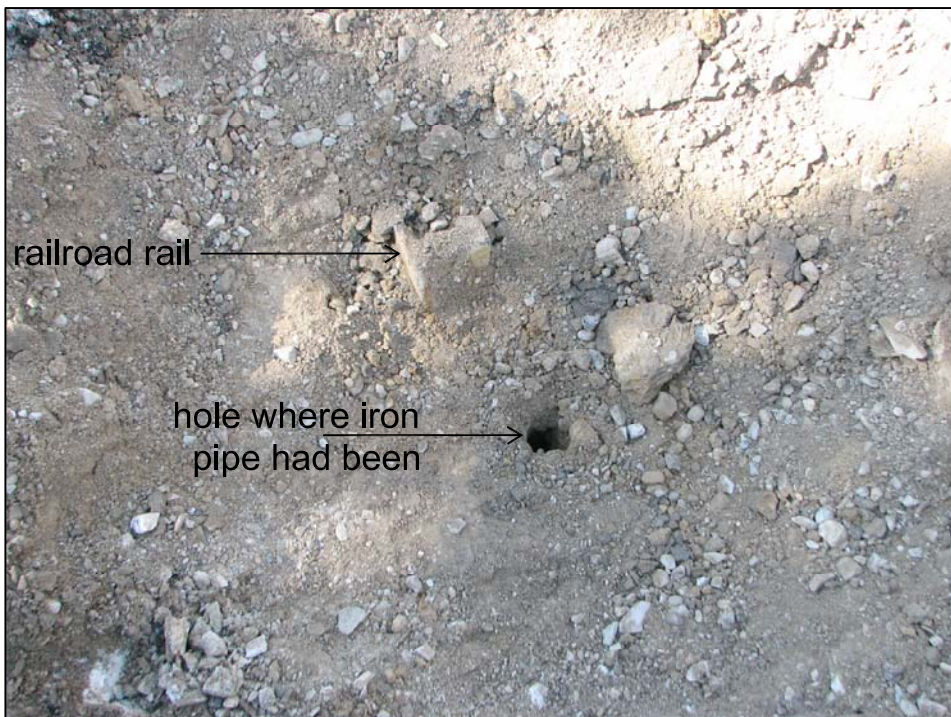
PHOTOGRAPHIC DOCUMENTATION

Date of photography: June 11, 2008

Photograph of the existing iron pipe and railroad rail.  
Note, the pipe was bent during excavation.



Photograph of the railroad rail and the hole in which the pipe was situated. The Harrison monument set in 2005 was between the two monuments. As noted on the other sheet, the new Harrison monument was set in the position of the railroad rail.



For details and documentation, refer to related sheet "Section Corner Record."

# SECTION CORNER RECORD

# SE 300-300

## BOONE COUNTY SURVEYOR'S OFFICE

State Plane grid coordinates NAD83 (NSRS 2007):

North: 1730128.28 East: 3140594.30 (U.S. survey feet)

Type of monument: Harrison, 4" disk 'Section Corner'

Depth: One inch below adjacent road surface

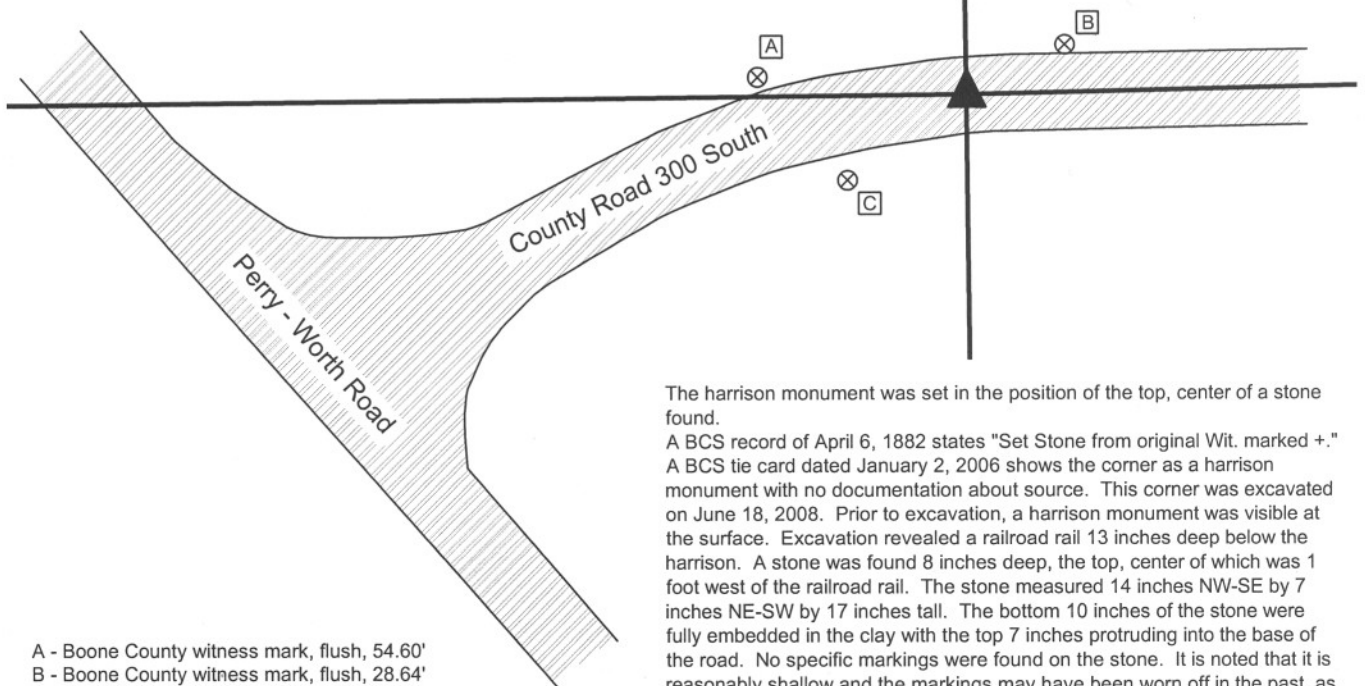
Indiana tie card references:

IN02\_T18NR1E15\_72    IN02\_T18NR1E16\_80

IN02\_T18NR1E21\_08    IN02\_T18NR1E22\_00

### CORNER WITNESS DETAIL

SCALE 1" = 50'

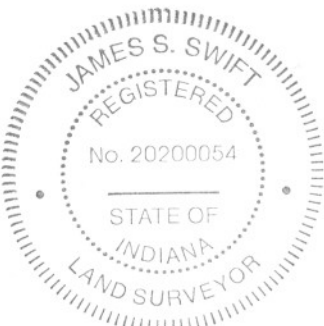


The harrison monument was set in the position of the top, center of a stone found.

A BCS record of April 6, 1882 states "Set Stone from original Wit. marked +."  
 A BCS tie card dated January 2, 2006 shows the corner as a harrison monument with no documentation about source. This corner was excavated on June 18, 2008. Prior to excavation, a harrison monument was visible at the surface. Excavation revealed a railroad rail 13 inches deep below the harrison. A stone was found 8 inches deep, the top, center of which was 1 foot west of the railroad rail. The stone measured 14 inches NW-SE by 7 inches NE-SW by 17 inches tall. The bottom 10 inches of the stone were fully embedded in the clay with the top 7 inches protruding into the base of the road. No specific markings were found on the stone. It is noted that it is reasonably shallow and the markings may have been worn off in the past, as has been observed on other stones. A small rock and remnants of wood were found along the bottom of the north edge of the stone. It is noted that the top of the rail was below the top of the stone. No source was found for the establishment of the rail. The stone was removed and the harrison monument was set in the position of the top, center of the stone.  
 This corner was originally established as a wood post in June, 1820.

- A - Boone County witness mark, flush, 54.60'
- B - Boone County witness mark, flush, 28.64'
- C - Boone County witness mark, flush, 38.06'

Boone County witness mark is a 3/8" diameter x 2' long rebar bearing a metal cap stamped "Boone County Witness Point."



*Kenneth E. Hedge*  
 Kenneth E. Hedge, County Surveyor

Center Township

*James S. Swift*  
 James S. Swift, IN LS 20200054

Perry Township

March 11, 2009

Section 16 T18N, R1E	Section 15 T18N, R1E
Section 21 T18N, R1E	Section 22 T18N, R1E



PHOTOGRAPHIC DOCUMENTATION

Date of photography: June 18, 2008

Corner stone and railroad rail.  
Overhead view from North.



Corner stone and railroad rail.  
Overhead view from West.



View of corner stone showing clay at west end.  
Overhead view from North.



Corner stone removed from ground, showing extent to which stone was embedded in clay. Approximately 10" of stone was in clay and 7" protruding into bottom of road bed.



For details and documentation, refer to related sheet "Section Corner Record."

# SECTION CORNER RECORD

SE 300-350

## BOONE COUNTY SURVEYOR'S OFFICE

State Plane grid coordinates NAD83 (NSRS 2007):

North: 1730187.35 East: 3143246.08 (U.S. survey feet)

Type of monument: Harrison, 4" disk 'Section Corner'

Depth: One inch below adjacent road surface

Indiana tie card references:

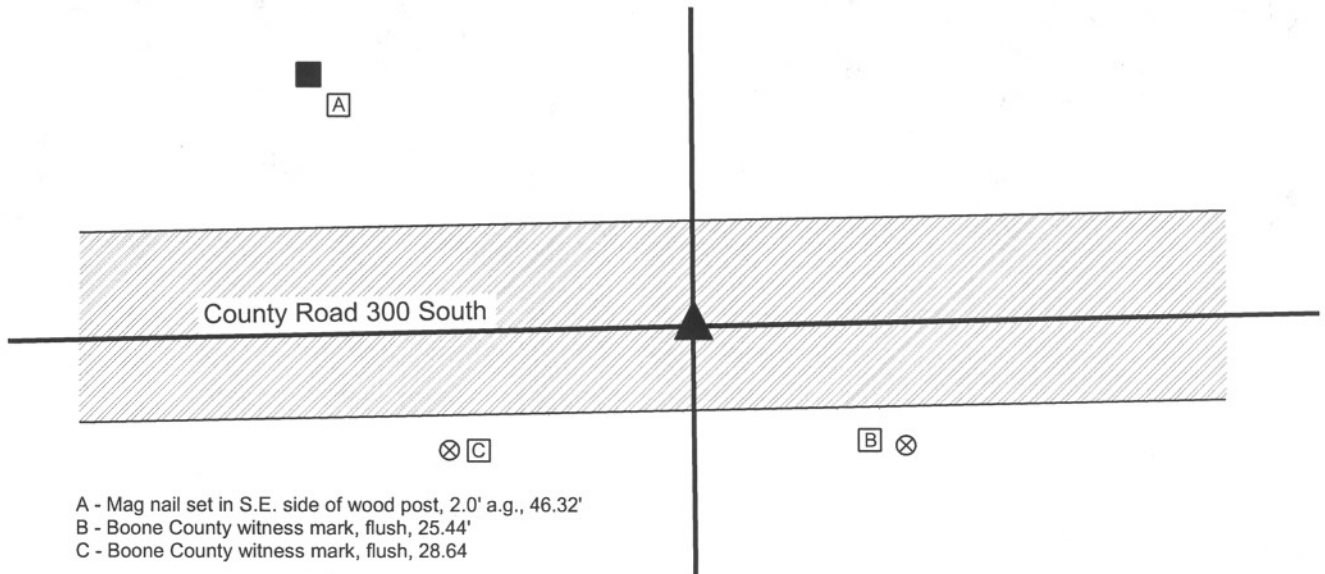
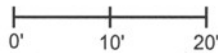
IN02\_T18NR1E15\_76

IN02\_T18NR1E22\_04



### CORNER WITNESS DETAIL

SCALE 1" = 20'



A - Mag nail set in S.E. side of wood post, 2.0' a.g., 46.32'

B - Boone County witness mark, flush, 25.44'

C - Boone County witness mark, flush, 28.64'

Boone County witness mark is a 3/8" diameter x 2' long rebar bearing a metal cap stamped "Boone County Witness Point."

The harrison monument was set over the top of a stone found and in place of two railroad spikes found. A BCS record of March 6, 1882 calls for a corner stone, 7.9.12 +. No BCS tie cards were found for this corner. This corner was excavated on July 21, 2008. Prior to excavation, no monuments were visible, nor was there visible evidence of the corner in the immediate vicinity other than County Road 300 South. A strong metal reading was detected with a magnetic locator in the vicinity of the logical position for the corner. A railroad spike was found 8 inches deep at this position. Another railroad spike was found directly below the top spike. At approximately 18 inches deep, the record stone was found directly below the two spikes. The stone is well embedded in the clay layer below the road and measures 7 inches E-W by 9 inches N-S. The top 10 inches of the stone were exposed but it was not excavated to the bottom to retain its original stability. The harrison monument was set over the etched "+" on the stone, which is also in precise agreement with the positions of the two railroad spikes. This corner was originally established as a wood post in June, 1820.



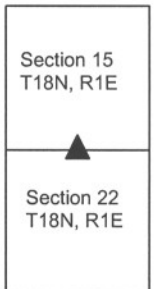
*Kenneth E. Hedge*  
 Kenneth E. Hedge, County Surveyor

*James S. Swift*  
 James S. Swift, IN LS 20200054

March 11, 2009

Center Township

Perry Township



PHOTOGRAPHIC DOCUMENTATION

Date of photography: July 21, 2008

Corner stone - overhead view from Northwest.



Same picture as to left, but vague, shallow etched "+" on top of stone is enhanced for ease of visual detection.



Corner stone - overhead view.



View from East, looking over corner stone and west down County Road 300 South.



For details and documentation, refer to related sheet "Section Corner Record."

# SECTION CORNER RECORD

# SE 300-400

## BOONE COUNTY SURVEYOR'S OFFICE

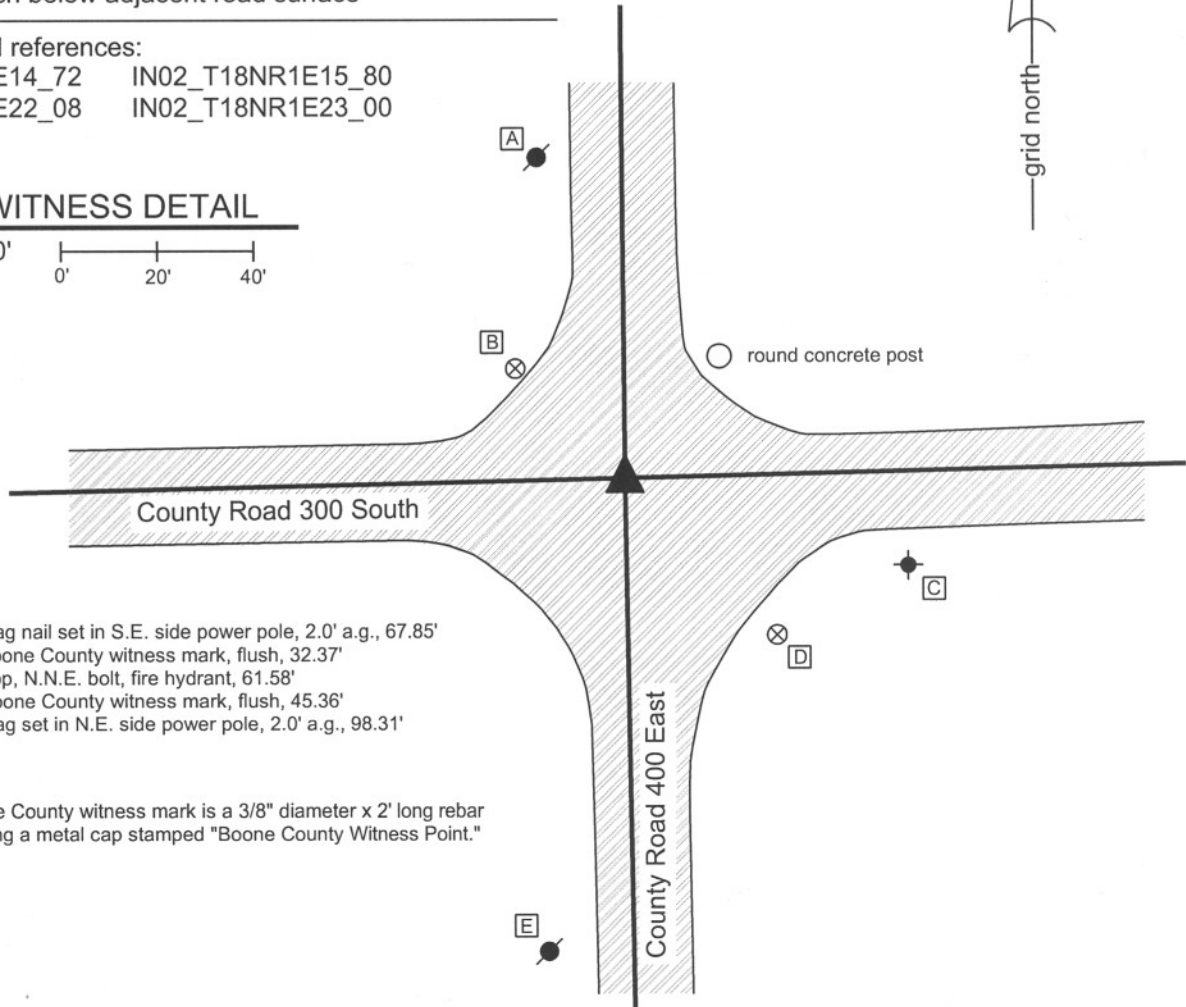
State Plane grid coordinates NAD83 (NSRS 2007):  
North: 1730242.88 East: 3145898.82 (U.S. survey feet)

Type of monument: Harrison, 4" disk 'Section Corner'  
Depth: One inch below adjacent road surface

Indiana tie card references:  
IN02\_T18NR1E14\_72 IN02\_T18NR1E15\_80  
IN02\_T18NR1E22\_08 IN02\_T18NR1E23\_00

### CORNER WITNESS DETAIL

SCALE 1" = 40'



- A - Mag nail set in S.E. side power pole, 2.0' a.g., 67.85'
- B - Boone County witness mark, flush, 32.37'
- C - Top, N.N.E. bolt, fire hydrant, 61.58'
- D - Boone County witness mark, flush, 45.36'
- E - Mag set in N.E. side power pole, 2.0' a.g., 98.31'

Boone County witness mark is a 3/8" diameter x 2' long rebar bearing a metal cap stamped "Boone County Witness Point."

The harrison monument was set over a stone found. A BCS record of October 29, 1873 states "Reestablished from stump of Red Oak. Set Two Rocks. One 8,5 1/2,4. Top one 11,9,5 1/2 +." A BCS tie card with no date states "No stone. Set temporary 1 1/4" pipe." A BCS tie card dated October 25, 2005 shows the corner as a harrison monument with no documentation about the source. This corner was excavated on June 18, 2008. Prior to excavation, a harrison monument was visible at the surface. Excavation revealed a railroad rail below the harrison at 12 inches deep. A second railroad rail was found at 10 inches deep 1.0 foot North and 0.5 feet E of the first rail. No explanation is offered as to why two railroad rails were present at the intersection. The record stone was found at 23 inches deep. The stone measures 9 inches E-W by 5 1/2 inches N-S by 11 inches tall. The etched "+" is clearly visible on the south side of the sloping top of the stone. Refer to the attached sheet for photographic documentation of the rails and record stone. The new harrison was set over the top of the stone. The previously existing harrison and both rails were removed during excavation. The previous harrison had been 2.4 feet south and 1.8 feet east of the record stone.



*Kenneth E. Hedge*  
Kenneth E. Hedge, County Surveyor

*James S. Swift*  
James S. Swift, IN LS 20200054

March 11, 2009

Center Township

Perry Township

Worth Twp

Section 15 T18N, R1E	Section 14 T18N, R1E
Section 22 T18N, R1E	Section 23 T18N, R1E

PHOTOGRAPHIC DOCUMENTATION

Date of photography: June 18, 2008

Two railroad rails found approximately 1.3 feet apart. See other sheet for information.



Corner stone - overhead view from South.



Corner stone. Close up view.



View from the South looking North across the stone and along County Road 400 East.



View from the West looking East across the stone and along County Road 300 South.



For details and documentation, refer to related sheet "Section Corner Record."