

# SECTION CORNER RECORD

NW 900-700

## BOONE COUNTY SURVEYOR'S OFFICE

State Plane grid coordinates NAD83 (2011):

North: 1793194.95 East: 3087813.28 (U.S. survey feet)

Type of monument: Harrison, 4" disk 'Section Corner'

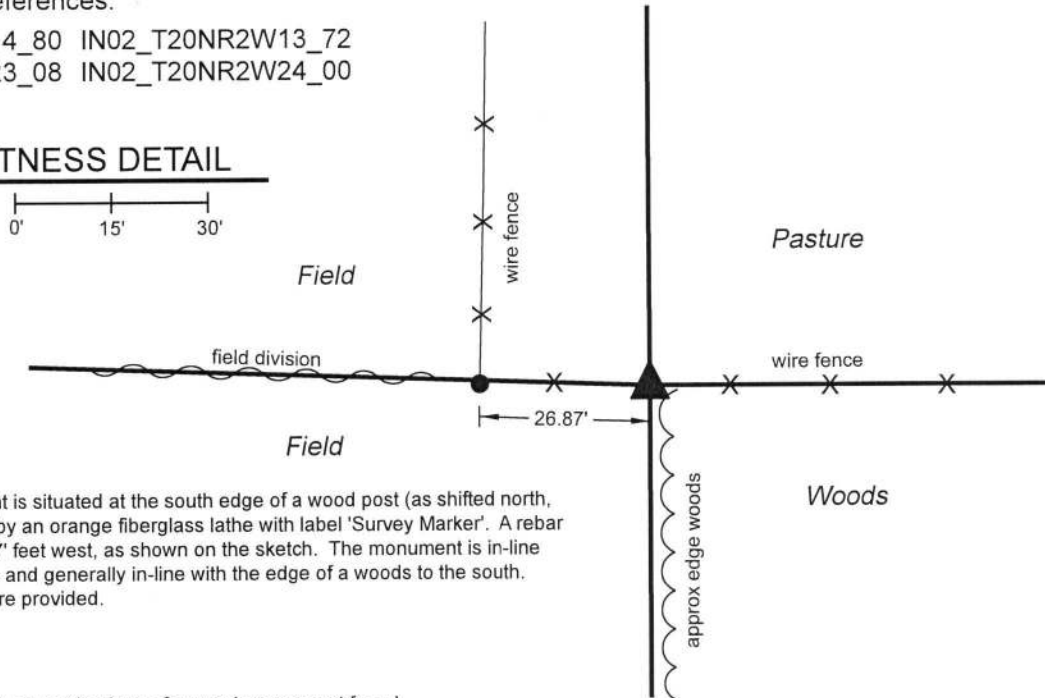
Depth: Three inches above adjacent ground

Indiana tie card references:

IN02\_T20NR2W14\_80 IN02\_T20NR2W13\_72  
IN02\_T20NR2W23\_08 IN02\_T20NR2W24\_00

### CORNER WITNESS DETAIL

SCALE 1" = 30'

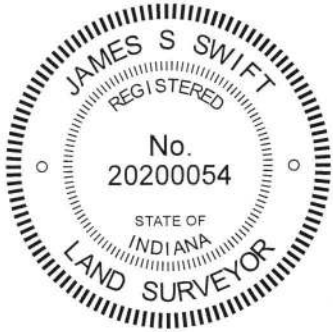


The Harrison monument is situated at the south edge of a wood post (as shifted north, see below), witnessed by an orange fiberglass lathe with label 'Survey Marker'. A rebar with yellow cap is 26.87' feet west, as shown on the sketch. The monument is in-line with an east west fence and generally in-line with the edge of a woods to the south. No other distance ties are provided.

The Harrison monument was set in place of a wood corner post found.

A BCS record dated May 8, 1873 states, with respect to this corner, "Reestablished. Set a Rock 14.13.6 +." No recent BCS tie cards were found referencing this corner. A survey by Jerry L. Carter, LS S0350, recorded as document 0303136 in the Office of the Boone County Surveyor, shows the corner as a head post and shows a rebar with cap 26.87 feet to the west.

This corner was excavated on November 7, 2018. Prior to excavation, the post and rebar called in the Carter survey were found as shown on the survey. Excavation in the vicinity of the post revealed numerous rocks and a variety of rubble, including broken pieces of concrete. One notable stone was found at 17 inches deep, below most of the rubble. The top of the stone measured 18 inches E-W by 9 inches N-S. The height of the stone was not measured. The center of the top of the stone was 16 inches south of the post. The stone does not match the dimensions called in 1873 record and did not appear to be a stone purposely set to mark the corner. The stone was not accepted as marking the corner. The post fits well with the relative positions of other proximate corners and falls in line with a fence to the east and the edge of a wood line to the south. The Carter survey shows the post to be in line with a fence to the south. The fence has evidently been removed since the survey was made, but the post and approximate wood line fall generally in line with the prolongation of the center of County Road 700 West, beginning approximately 1/4 mile south of the corner. The Carter survey also shows the post in line with a N-S fence beginning 495 feet north of the corner. The post was accepted as providing the best available evidence of the corner. The post was broken at ground level but standing as supported by the fencing to the east and west. The top portion of the post was pushed toward the north and stabilized by a 5/8 inch rebar driven along the south edge of the post, as shifted to the north. The portion of the post remaining in the ground was found to be mostly rotten. This portion was removed and a replaced with a Harrison monument. It is noted that the monument is situated in the precise position of the center of the post, as originally found, and that the remaining portion of the post, suspended amongst the fencing, is north of its original position. It is also noted that a fence bearing north from the rebar found 26.87 feet west of the corner does not fall along the section line. This is clearly demonstrated on the Carter survey. The land descriptions for numerous properties to the northwest, northeast and southeast contain similar language to the description contained in the Carter survey and appear to hold the post as the corner. Hence the presence of the north-south fence west of the section line is not considered an uncertainty. This corner was originally established as a wood post in 1829.



*Kenneth E. Hedge*  
Kenneth E. Hedge, County Surveyor

*James S. Swift*  
James S. Swift, IN LS 20200054  
January 23, 2019

Sugar Creek Township

Section 14 T20N, R2W	Section 13 T20N, R2W
Section 23 T20N, R2W	Section 24 T20N, R2W

# SECTION CORNER RECORD

NW 900-750

## BOONE COUNTY SURVEYOR'S OFFICE

State Plane grid coordinates NAD83 (2011):

North: 1793286.14 East: 3085133.62 (U.S. survey feet)

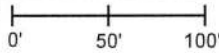
Type of monument: 5/8 inch rebar in concrete with metal cap stamped 'Boone County Surveyor'  
Depth: One inch below adjacent ground.

Indiana tie card references:

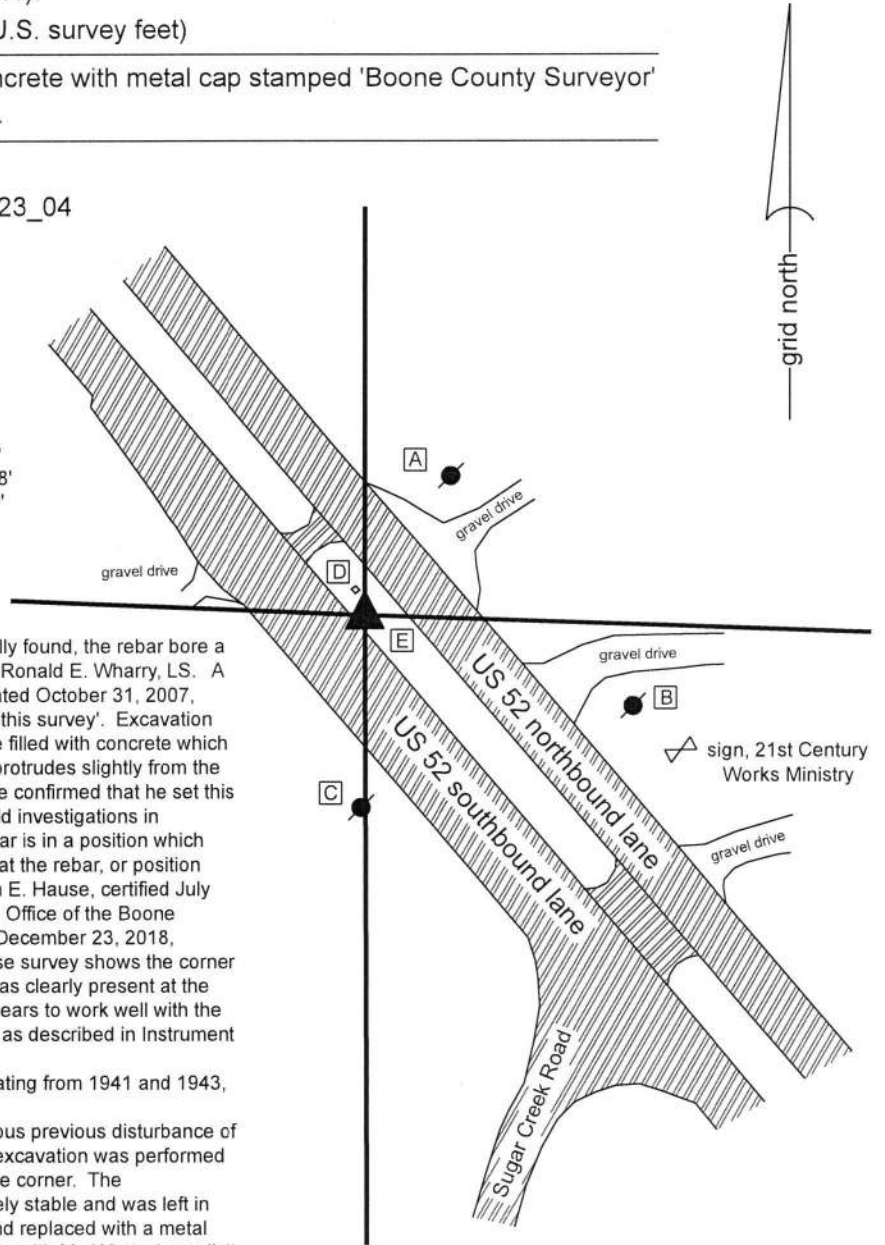
IN02\_T20NR2W14\_76 IN02\_T20NR2W23\_04

### CORNER WITNESS DETAIL

SCALE 1" = 100'



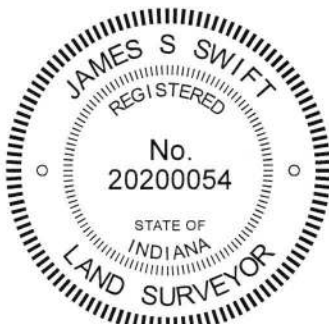
- A - Mag Nail set in W. side power pole, 2' a.g., 81.3'
- B - Mag Nail set in W. side power pole, 2' a.g., 142.8'
- C - Mag nail set in E. side power pole, 2' a.g., 100.0'
- D - Southerly corner, drain inlet casting, flush, 12.3'
- E - Rebar, yellow cap, 6.9' east (see notes)



The rebar in concrete was found in place. As originally found, the rebar bore a yellow plastic cap stamped R.E.W. S0420, indicating Ronald E. Wharry, LS. A survey by Mr. Wharry of adjoining land to the west, dated October 31, 2007, shows the corner as being a 'concrete monument set this survey'. Excavation around the rebar indicates that it is set in a pvc sleeve filled with concrete which extends to at least 3 feet deep. The top of the rebar protrudes slightly from the top of the concrete. Mr. Wharry was contacted and he confirmed that he set this monument per evidence from the north and east. Field investigations in November and December, 2018 confirm that the rebar is in a position which works well with the available evidence. It is known that the rebar, or position thereof, has been held by recent surveys by Jonathon E. Hause, certified July 26, 2018, recorded in Survey Book 18, page 39 in the Office of the Boone County Recorder and James Reese Harpel, certified December 23, 2018, recorded in Survey Book 18, page 95 (note: the Hause survey shows the corner as calculated position, though the rebar in concrete was clearly present at the time of the survey). The position of the rebar also appears to work well with the description of the adjoining property to the southeast, as described in Instrument 20130000635 in the Boone County Recorder's Office.

Plans for U.S. Highway 52, supplied by INDOT and dating from 1941 and 1943, do not show a specific location for the corner. Due to the position in the median of U.S. 52 and obvious previous disturbance of the ground in the vicinity of the corner, no significant excavation was performed at this corner. The rebar was accepted as marking the corner. The rebar-in-concrete type monument appears to be entirely stable and was left in place. The plastic cap of Mr. Wharry was removed and replaced with a metal cap stamped 'Boone County Surveyor.' This was done with Mr. Wharry's explicit knowledge and consent.

It is noted that another rebar, also bearing the cap of Mr. Wharry, is situated immediately east of the corner at 6.9 feet. The westerly of the two rebars is the corner.



*Kenneth E. Hedge*  
Kenneth E. Hedge, County Surveyor

*James S. Swift*  
James S. Swift, IN LS 20200054  
February 12, 2019

Sugar Creek Township

Section 14  
T20N, R2W

Section 23  
T20N, R2W

# SECTION CORNER RECORD

NW 900-800

## BOONE COUNTY SURVEYOR'S OFFICE

State Plane grid coordinates NAD83 (2011):

North: 1793394.53 East: 3082457.39 (U.S. survey feet)

Type of monument: Harrison, 4" disk 'Section Corner'

Depth: Flush with adjacent ground

Indiana tie card references:

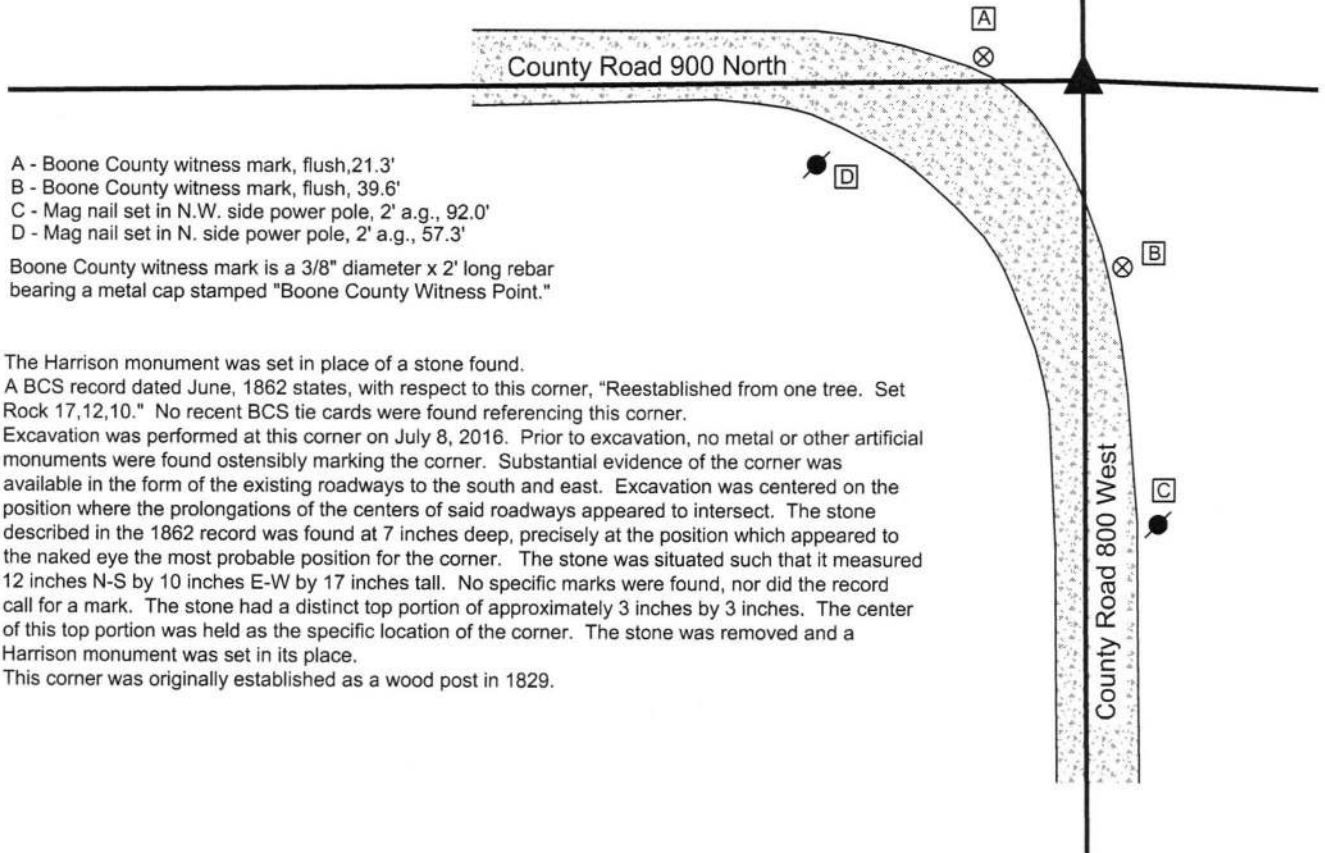
IN02\_T20NR2W5\_80 IN02\_T20NR2W14\_72

IN02\_T20NR2W22\_08 IN02\_T20NR2W23\_00



### CORNER WITNESS DETAIL

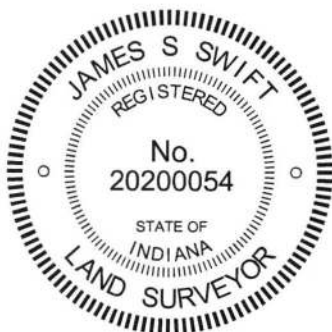
SCALE 1" = 40'



- A - Boone County witness mark, flush, 21.3'
- B - Boone County witness mark, flush, 39.6'
- C - Mag nail set in N.W. side power pole, 2' a.g., 92.0'
- D - Mag nail set in N. side power pole, 2' a.g., 57.3'

Boone County witness mark is a 3/8" diameter x 2' long rebar bearing a metal cap stamped "Boone County Witness Point."

The Harrison monument was set in place of a stone found. A BCS record dated June, 1862 states, with respect to this corner, "Reestablished from one tree. Set Rock 17,12,10." No recent BCS tie cards were found referencing this corner. Excavation was performed at this corner on July 8, 2016. Prior to excavation, no metal or other artificial monuments were found ostensibly marking the corner. Substantial evidence of the corner was available in the form of the existing roadways to the south and east. Excavation was centered on the position where the prolongations of the centers of said roadways appeared to intersect. The stone described in the 1862 record was found at 7 inches deep, precisely at the position which appeared to the naked eye the most probable position for the corner. The stone was situated such that it measured 12 inches N-S by 10 inches E-W by 17 inches tall. No specific marks were found, nor did the record call for a mark. The stone had a distinct top portion of approximately 3 inches by 3 inches. The center of this top portion was held as the specific location of the corner. The stone was removed and a Harrison monument was set in its place. This corner was originally established as a wood post in 1829.



Kenneth E. Hedge, County Surveyor

James S. Swift, IN LS 20200054  
March 23, 2017

Sugar Creek Township

Section 15 T20N, R2W	Section 14 T20N, R2W
Section 22 T20N, R2W	Section 23 T20N, R2W



PHOTOGRAPHIC DOCUMENTATION

Date of photography: July 8, 2016

The stone as it was originally exposed.



The stone more fully exposed.



View from approximately above the stone looking west along County Road 900 North.



View from approximately above the stone looking south along County Road 800 West.



For details and documentation, refer to related sheet "Section Corner Record."