

SECTION CORNER RECORD

NE 900-1000

BOONE COUNTY SURVEYOR'S OFFICE

State Plane grid coordinates NAD83 (2011):

North: 1794552.30 East: 3177124.62 (U.S. survey feet)

Type of monument: Plug in monument box, INDOT Type B

Depth: Flush with adjacent road surface

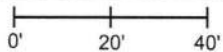
Indiana tie card references:

IN02_T20NR2E15_80 IN02_T20NR2E14_72

IN02_T20NR2E22_08 IN02_T20NR2E23_00

CORNER WITNESS DETAIL

SCALE 1" = 40'

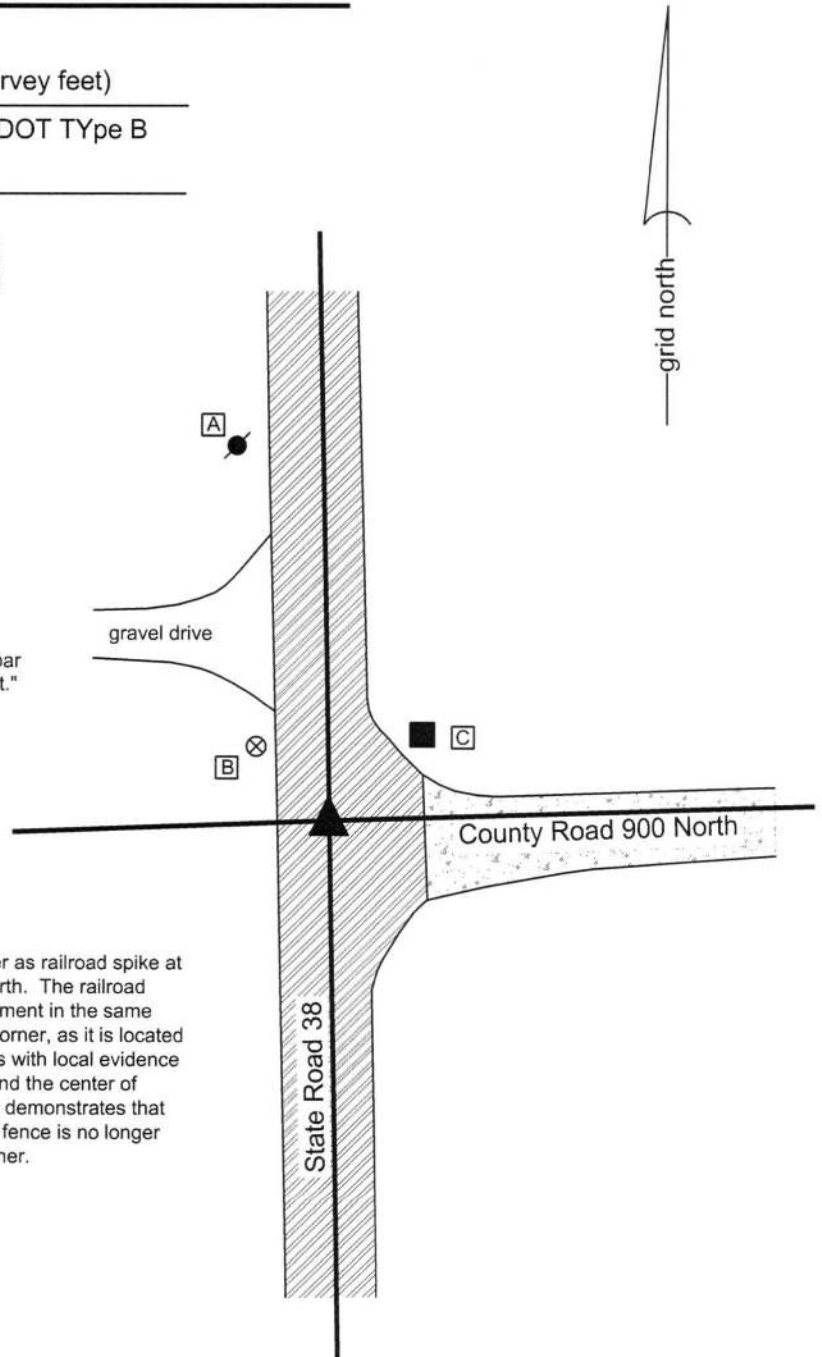


A - Mag nail set in E. side power pole, 2' a.g., 80.1'

B - Boone County witness mark, flush, 21.6'

C - Mag nail set in S. side wood post, 2' a.g., 24.5'

Boone County witness mark is a 3/8" diameter x 2' long rebar bearing a metal cap stamped "Boone County Witness Point."



The INDOT Type B monument was found in place.

A BCS tie card dated September 18, 2006 shows the corner as railroad spike at the intersection of State Road 38 and County Road 900 North. The railroad spike has been subsequently replaced with a Type B monument in the same position by INDOT. Excavation was not performed at this corner, as it is located within an Indiana state highway. The Type B monument fits with local evidence in the form of the center of S.R. 38 to the north and south and the center of County Road 900 North to the east. The 2006 tie card also demonstrates that the railroad spike was in line with a fence to the west. This fence is no longer present. The Type B monument is held as marking the corner.



Kenneth E. Hedge

 Kenneth E. Hedge, County Surveyor

James S. Swift

 James S. Swift, IN LS 20200054
 March 23, 2017

Marion Township

Section 15 T20N, R2E	Section 14 T20N, R2E
Section 22 T20N, R2E	Section 23 T20N, R2E

SECTION CORNER RECORD

NE 900-1050

BOONE COUNTY SURVEYOR'S OFFICE

State Plane grid coordinates NAD83 (CORS96):

North: 1794634.66 East: 3179777.80 (U.S. survey feet)

Type of monument: Harrison, 4" disk 'Section Corner'

Depth: six inches below adjacent gravel road surface.

Indiana tie card references:

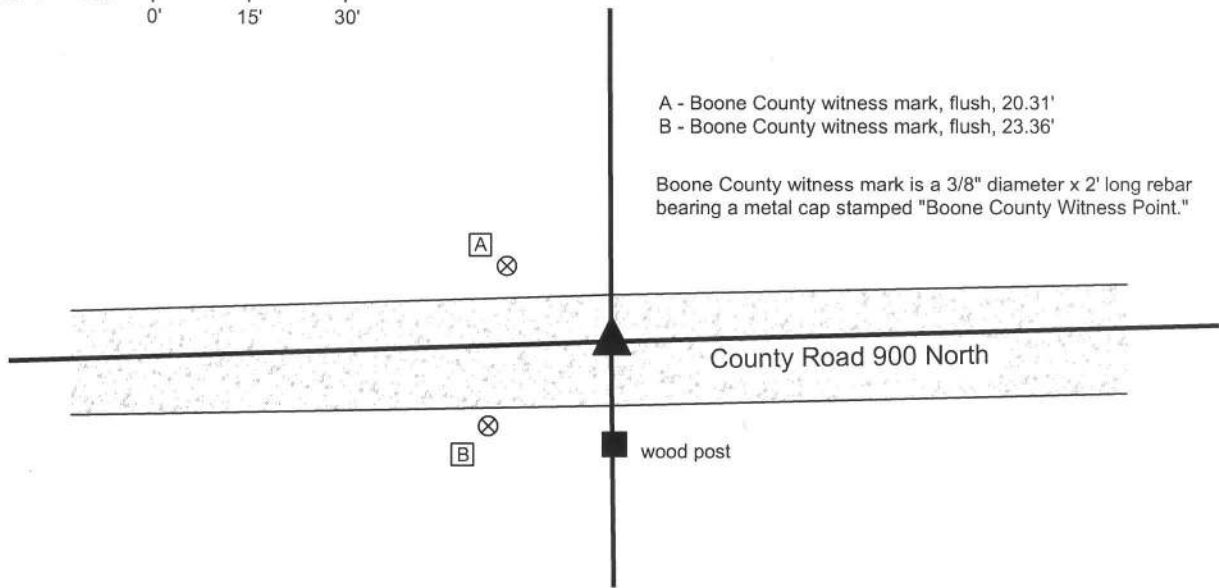
IN02_T20NR2E14_76

IN02_T20NR2E23_04



CORNER WITNESS DETAIL

SCALE 1" = 30'



The harrison monument was set in place of a rebar found.

A BCS record of June 3-4, 1869 states "Reestablished from trees Sugar is green Oak down but here drove stake." A BCS record of September 10, 1872 states "Set a Rock 15.15.6&4 + at the Stake." A BCS tie card dated August 20, 1974 states "small stone found."

This corner was excavated on September 16, 2013. Prior to excavation a 5/8 inch diameter rebar was found disturbed at the surface of the road.

Excavation of an area extending 4 feet north, 4 feet south, 5 feet west and 16 feet east of the rebar yielded no further evidence of the corner. The rebar fit with the 1974 tie card, being in line with the post on the south side of the road. The reference to a "small stone found" does not necessarily mean the the stone described in the 1872 record was found, as that rock (15 by 15 by 6 to 4 inches) was not particulaly small. Measurement analysis indicated that the corner may be up to 12 feet east, hence the large area of excavation in the E-W dimension. The rebar does fit with local evidence in the form of the post to the south and, as shown on the 1974 tie card, the fences to both the north and south. The rebar was accepted as providing the best available evidence of the corner and was replaced with a harrison monument in the same position.

This corner was originally established as a wood post in 1821.



Kenneth E. Hedge, County Surveyor

James S. Swift, IN LS 20200054

February 5, 2015

Marion Township

Section 14
T20N, R2E

Section 23
T20N, R2E

SECTION CORNER RECORD

NE 900-1100

BOONE COUNTY SURVEYOR'S OFFICE

State Plane grid coordinates NAD83 (CORS96):

North: 1794702.88 East: 3182453.26 (U.S. survey feet)

Type of monument: Harrison, 4" disk 'Section Corner'

Depth: four inches below the surface of the gravel road.

Indiana tie card references:

IN02_T20NR2E14_80 IN02_T20NR2E13_72

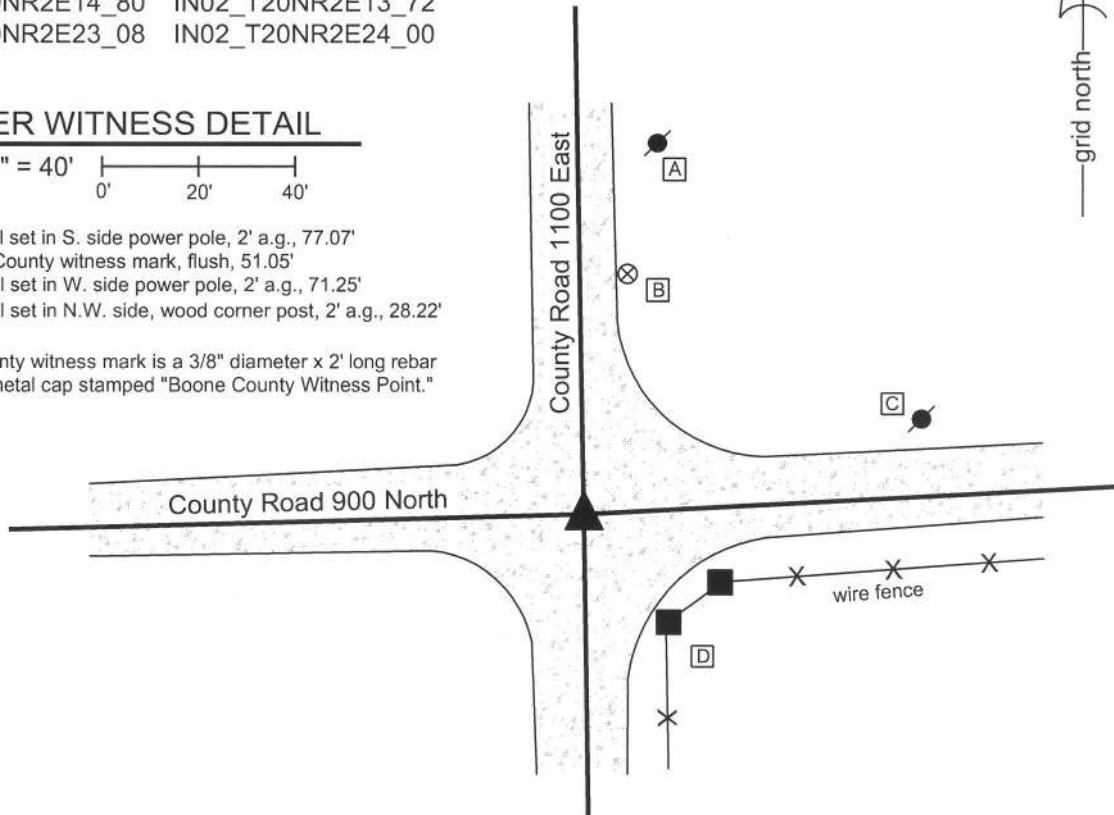
IN02_T20NR2E23_08 IN02_T20NR2E24_00

CORNER WITNESS DETAIL

SCALE 1" = 40'
0' 20' 40'

- A - Mag nail set in S. side power pole, 2' a.g., 77.07'
- B - Boone County witness mark, flush, 51.05'
- C - Mag nail set in W. side power pole, 2' a.g., 71.25'
- D - Mag nail set in N.W. side, wood corner post, 2' a.g., 28.22'

Boone County witness mark is a 3/8" diameter x 2' long rebar bearing a metal cap stamped "Boone County Witness Point."



The harrison monument was set over a stone found.
 A BCS record of October 4-5, 1870 states "Reestablished Set two Rocks one 8.5 1/2 by 4 + Top One 18.16 by 13 in. marked +." A BCS tie card dated August 20, 1974 states "no stone found."
 This corner was excavated on September 11, 2013. Prior to excavation, a 5/8 inch diameter rebar with an orange plastic cap (markings illegible) was found 3 inches deep at the intersection of the gravel roads. Excavation revealed a stone at 12 inches deep. The stone was embedded in the clay layer below the road, protruding approximately 3 inches into the bottom of the road bed. The stone has a triangular shaped top with a long "arm" protruding toward the east. With the top 7 inches of the stone exposed, it measured 13 inches N-S by 15 inches E-W and was clearly much larger in the vertical dimension. A mark may have been present on the top of the stone but was difficult to distinguish and positively identify. The stone was accepted as being the top rock described in the 1870 record. The top 4 inches of the stone were encased in concrete and a harrison monument was set directly over the top high point / top center of the stone. The harrison monument is 8 inches tall above the stone. The rebar, removed during excavation, had been 1.2 feet north of the point held as the corner.
 This corner was originally established as a wood post in 1821.



Kenneth E. Hedge
 Kenneth E. Hedge, County Surveyor

James S. Swift
 James S. Swift, IN LS 20200054
 February 5, 2015

Marion Township

Section 14 T20N, R2E	Section 13 T20N, R2E
Section 23 T20N, R2E	Section 24 T20N, R2E

PHOTOGRAPHIC DOCUMENTATION

Date of photography: September 11, 2013

View of the stone as first exposed.



The stone washed.



View from the south, looking across the stone and north along County Road 1100 East.



View from the east, looking across the stone and west along County Road 900 North.



For details and documentation, refer to related sheet "Section Corner Record."

SECTION CORNER RECORD

NE 950-1000

BOONE COUNTY SURVEYOR'S OFFICE

State Plane grid coordinates NAD83 (2011):

North: 1797190.02 East: 3177076.12 (U.S. survey feet)

Type of monument: Plug in monument box, INDOT Type B

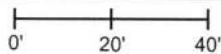
Depth: Flush with adjacent road surface

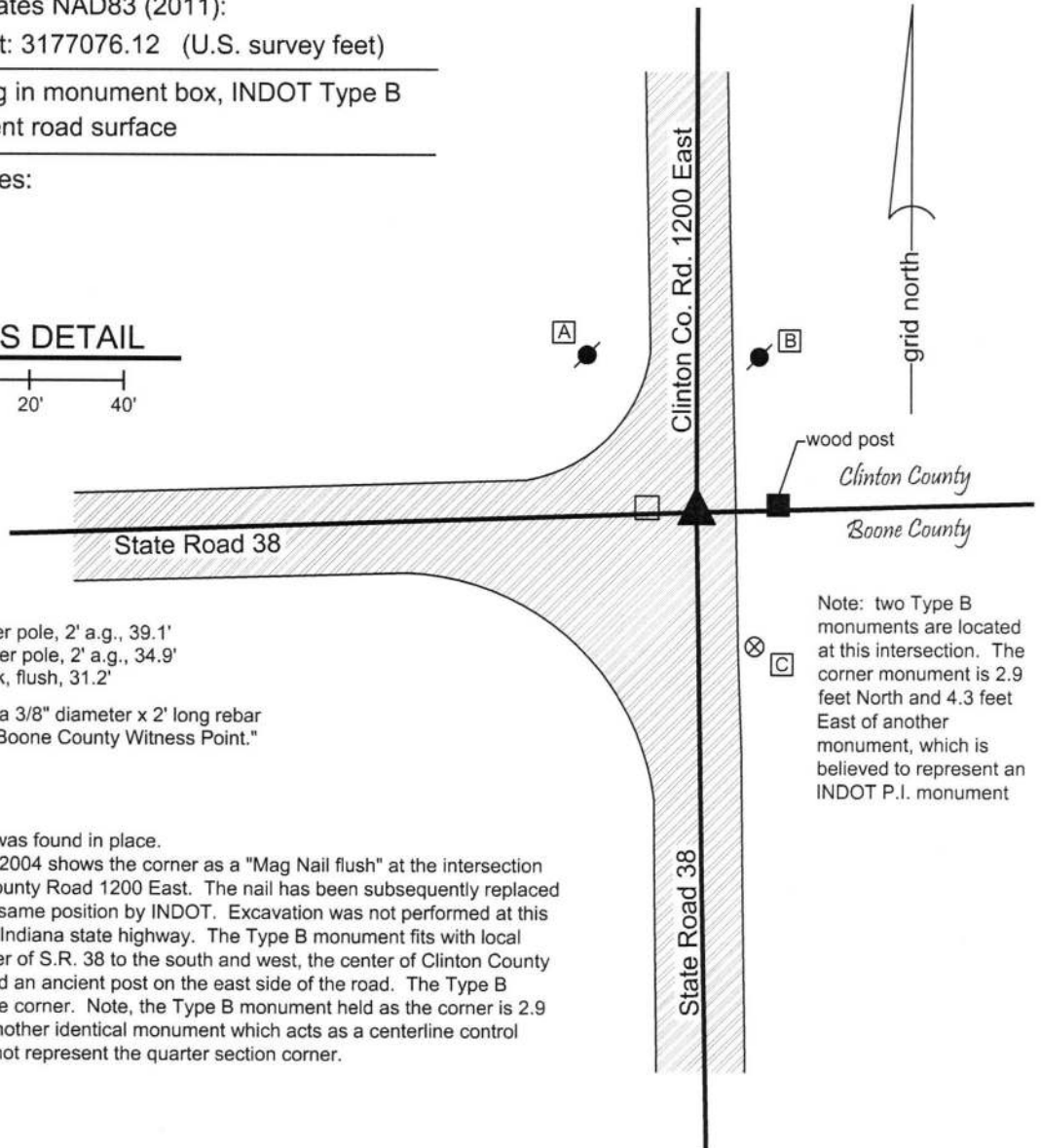
Indiana tie card references:

IN02_T20NR2E15_44

IN02_T20NR2E14_36

CORNER WITNESS DETAIL

SCALE 1" = 40' 



- A - Mag nail set in S. side power pole, 2' a.g., 39.1'
- B - Mag nail set in W. side power pole, 2' a.g., 34.9'
- C - Boone County witness mark, flush, 31.2'

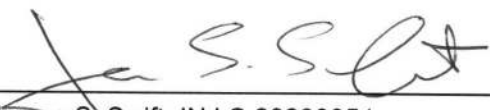
Boone County witness mark is a 3/8" diameter x 2' long rebar bearing a metal cap stamped "Boone County Witness Point."

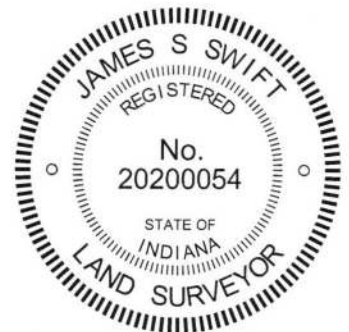
Note: two Type B monuments are located at this intersection. The corner monument is 2.9 feet North and 4.3 feet East of another monument, which is believed to represent an INDOT P.I. monument

The INDOT Type B monument was found in place.

A Clinton County tie card dated 2004 shows the corner as a "Mag Nail flush" at the intersection of State Road 38 and Clinton County Road 1200 East. The nail has been subsequently replaced with a Type B monument in the same position by INDOT. Excavation was not performed at this corner, as it is located within an Indiana state highway. The Type B monument fits with local evidence in the form of the center of S.R. 38 to the south and west, the center of Clinton County Road 1200 East to the north, and an ancient post on the east side of the road. The Type B monument is held as marking the corner. Note, the Type B monument held as the corner is 2.9 feet north and 4.3 feet east of another identical monument which acts as a centerline control monument for SR 38 and does not represent the quarter section corner.


Kenneth E. Hedge, County Surveyor


James S. Swift, IN LS 20200054
March 23, 2017



Sugar Creek Twp
Clinton County

Marion Township
Boone County

Section 15
T20N, R2E

Section 14
T20N, R2E

SECTION CORNER RECORD

BOONE COUNTY SURVEYOR'S OFFICE

NE 950-1100

State Plane grid coordinates NAD83 (CORS96):
 North: 1797330.93 East: 3182407.56 (U.S. survey feet)

Type of monument: Harrison, 4" disk 'Section Corner'
 Depth: four inches below adjacent gravel road surface

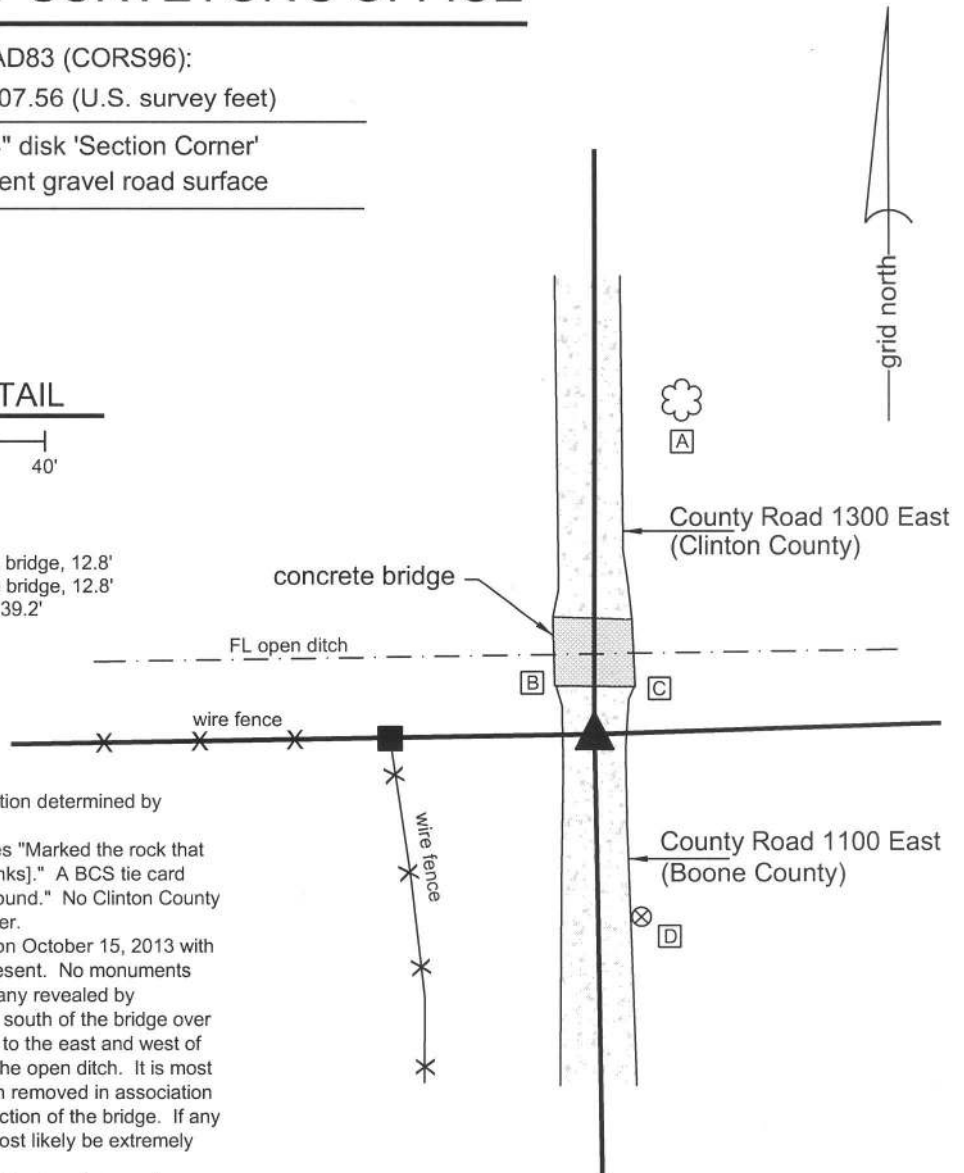
Indiana tie card references:

IN02_T20NR2E14_44
 IN02_T20NR2E13_36

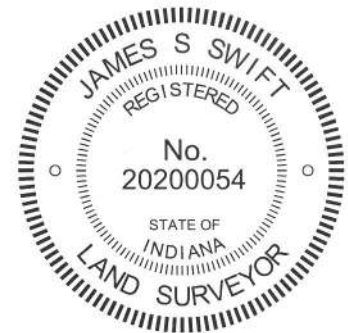
CORNER WITNESS DETAIL

SCALE 1" = 40'

- A - South edge, large tree, 67.5'
- B - S.E. corner, W. abutment, concrete bridge, 12.8'
- C - S.W. corner, E. abutment, concrete bridge, 12.8'
- D - Boone County witness mark, flush, 39.2'



The harrison monument was set at a position determined by distance ties shown on a previous record. A BCS record of September 9, 1872 states "Marked the rock that was set. A witness rock bears west 25 [links]." A BCS tie card dated August 22, 1974 states "no stone found." No Clinton County tie cards were found referencing this corner. Excavation at this corner was performed on October 15, 2013 with Dan Sheets, Clinton County Surveyor, present. No monuments were found prior to excavation, nor were any revealed by excavation. This corner falls immediately south of the bridge over a deep, open ditch. The adjacent ground to the east and west of the corner falls along the steep banks of the open ditch. It is most likely that a corner stone would have been removed in association with the dredging of the ditch and construction of the bridge. If any ancient monument did survive, it would most likely be extremely deep under the road. The position of the corner was established by the distance ties shown on the 1974 tie card and a harrison monument was set in this position. This corner was originally established in 1821.



Kenneth E. Hedge
 Kenneth E. Hedge, County Surveyor

James S. Swift
 James S. Swift, IN LS 20200054
 February 5, 2015

Sugar Creek Twp Clinton County	Section 14 T20N, R2E	Section 13 T20N, R2E
Marion Township Boone County	▲	