

SECTION CORNER RECORD

NW 900-100

BOONE COUNTY SURVEYOR'S OFFICE

State Plane grid coordinates NAD83 (2011):

North: 1793207.88 East: 3119523.27 (U.S. survey feet)

Type of monument: Harrison, 4" disk 'Section Corner'

Depth: One inch below adjacent ground

Indiana tie card references:

IN02_T20NR1W14_80 IN02_T20NR1W13_72

IN02_T20NR1W23_08 IN02_T20NR1W24_00

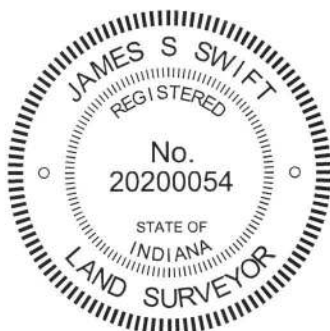
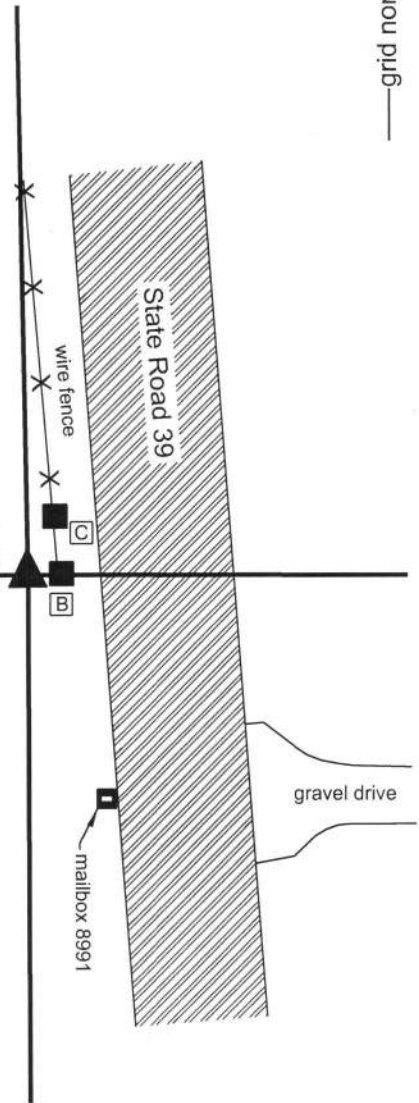


CORNER WITNESS DETAIL

SCALE 1" = 50'

- A - Mag nail set in E. side wood end post, 0.5' a.g., 10.6'
- B - Mag nail set in N.W. side wood post, 0.5' a.g., 6.6'
- C - Mag nail set in S. side wood post, 0.5' a.g., 13.7'

The Harrison Monument was set in place of a 5/8 inch diameter rebar with a red plastic cap stamped "WIT POINT."
No specific descriptions of the corner were found in the old BCS Surveyor's Record. A BCS tie card dated April 23, 1974 calls the corner as a stone found with Chiseled "+".
The found rebar fit precisely with the one remaining tie from the 1974 tie card and also fit graphically with the representation of the corner as being between the right-of-way of State Road 39 and the end post of a fence to the west, in line with the fence. Manual excavation around the rebar and probing in the immediate vicinity of the rebar did not yield further evidence of the corner. Excavation around the rebar clearly demonstrated that the top 8 inches of the soil have been disturbed in recently with various rocks and gravel found mixed with pieces of plastic and rubber. The clay layer was below the soil layer was found at 15 inches. The stone called in the 1974 record was not found. The position of the rebar matches the tie card and the rebar is known to have been held as the corner on numerous private surveys. It is believed that the rebar replaced the stone in the same position.
The rebar was held as marking the corner and was replaced with a Harrison Monument on September 13, 2017.
This corner was originally established as a wood post in 1822.



Kenneth E. Hedge
Kenneth E. Hedge, County Surveyor

James S. Swift
James S. Swift, IN LS 20200054
September 19, 2017

Washington Township

Section 14 T20N, R1W	Section 13 T20N, R1W
Section 23 T20N, R1W	Section 24 T20N, R1W

SECTION CORNER RECORD

NW 900-150

BOONE COUNTY SURVEYOR'S OFFICE

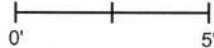
State Plane grid coordinates NAD83 (2011):
North: 1793198.62 East: 3116880.70 (U.S. survey feet)

Type of monument: Harrison, 4" disk 'Section Corner'
Depth: Flush with adjacent ground

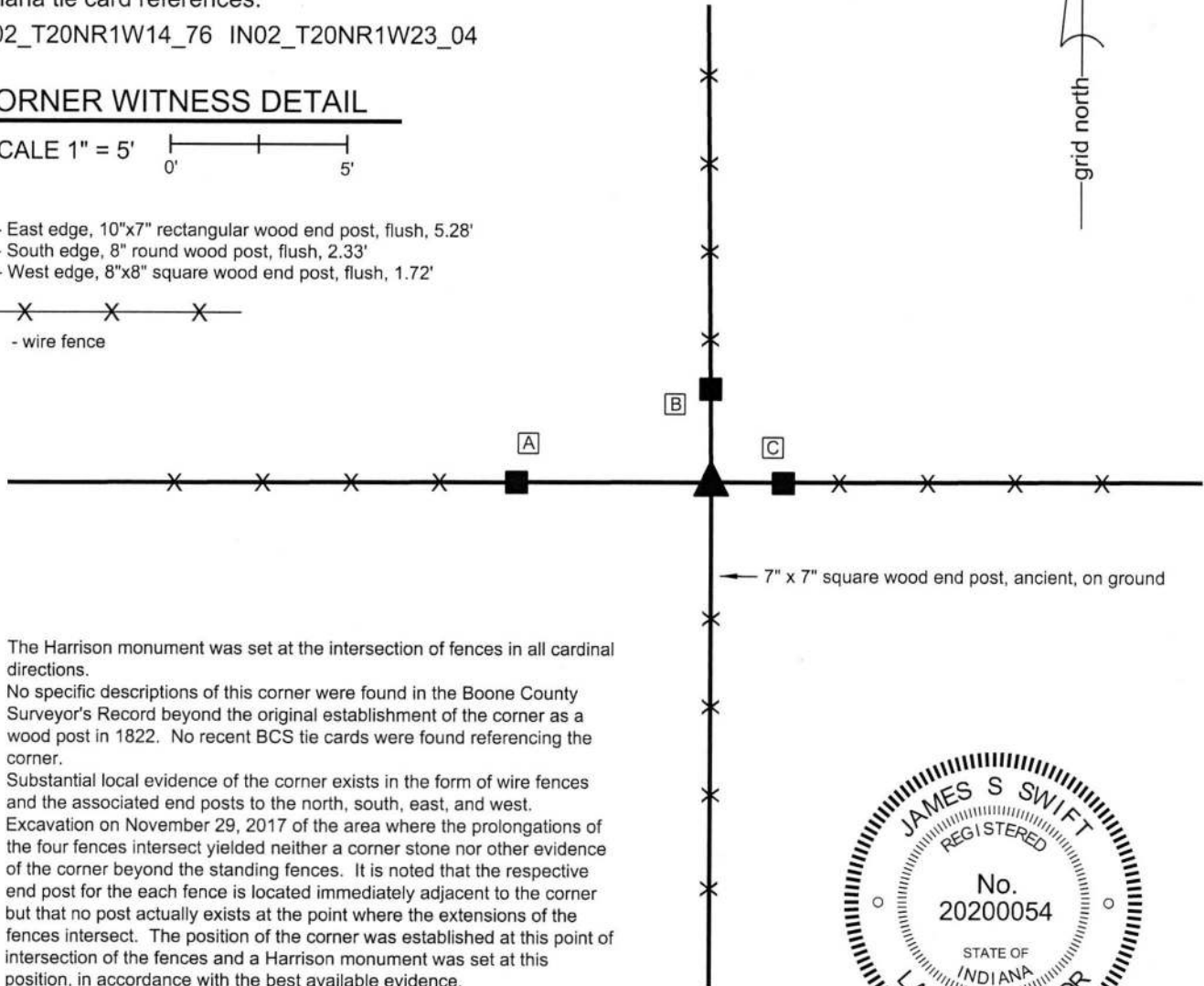
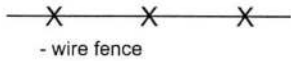
Indiana tie card references:
IN02_T20NR1W14_76 IN02_T20NR1W23_04

CORNER WITNESS DETAIL

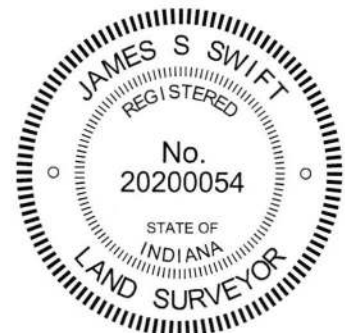
SCALE 1" = 5'




- A - East edge, 10"x7" rectangular wood end post, flush, 5.28'
- B - South edge, 8" round wood post, flush, 2.33'
- C - West edge, 8"x8" square wood end post, flush, 1.72'

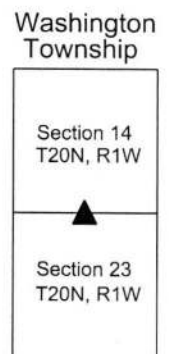


The Harrison monument was set at the intersection of fences in all cardinal directions.
No specific descriptions of this corner were found in the Boone County Surveyor's Record beyond the original establishment of the corner as a wood post in 1822. No recent BCS tie cards were found referencing the corner.
Substantial local evidence of the corner exists in the form of wire fences and the associated end posts to the north, south, east, and west.
Excavation on November 29, 2017 of the area where the prolongations of the four fences intersect yielded neither a corner stone nor other evidence of the corner beyond the standing fences. It is noted that the respective end post for the each fence is located immediately adjacent to the corner but that no post actually exists at the point where the extensions of the fences intersect. The position of the corner was established at this point of intersection of the fences and a Harrison monument was set at this position, in accordance with the best available evidence.




James S. Swift, IN LS 20200054
February 14, 2018


Kenneth E. Hedge, County Surveyor



SECTION CORNER RECORD

BOONE COUNTY SURVEYOR'S OFFICE

NW 900-200

State Plane grid coordinates NAD83 (2011):

North: 1793177.73 East: 3114211.14 (U.S. survey feet)

Type of monument: Harrison, 4" disk 'Section Corner'

Depth: Three inches below adjacent gravel drive surface

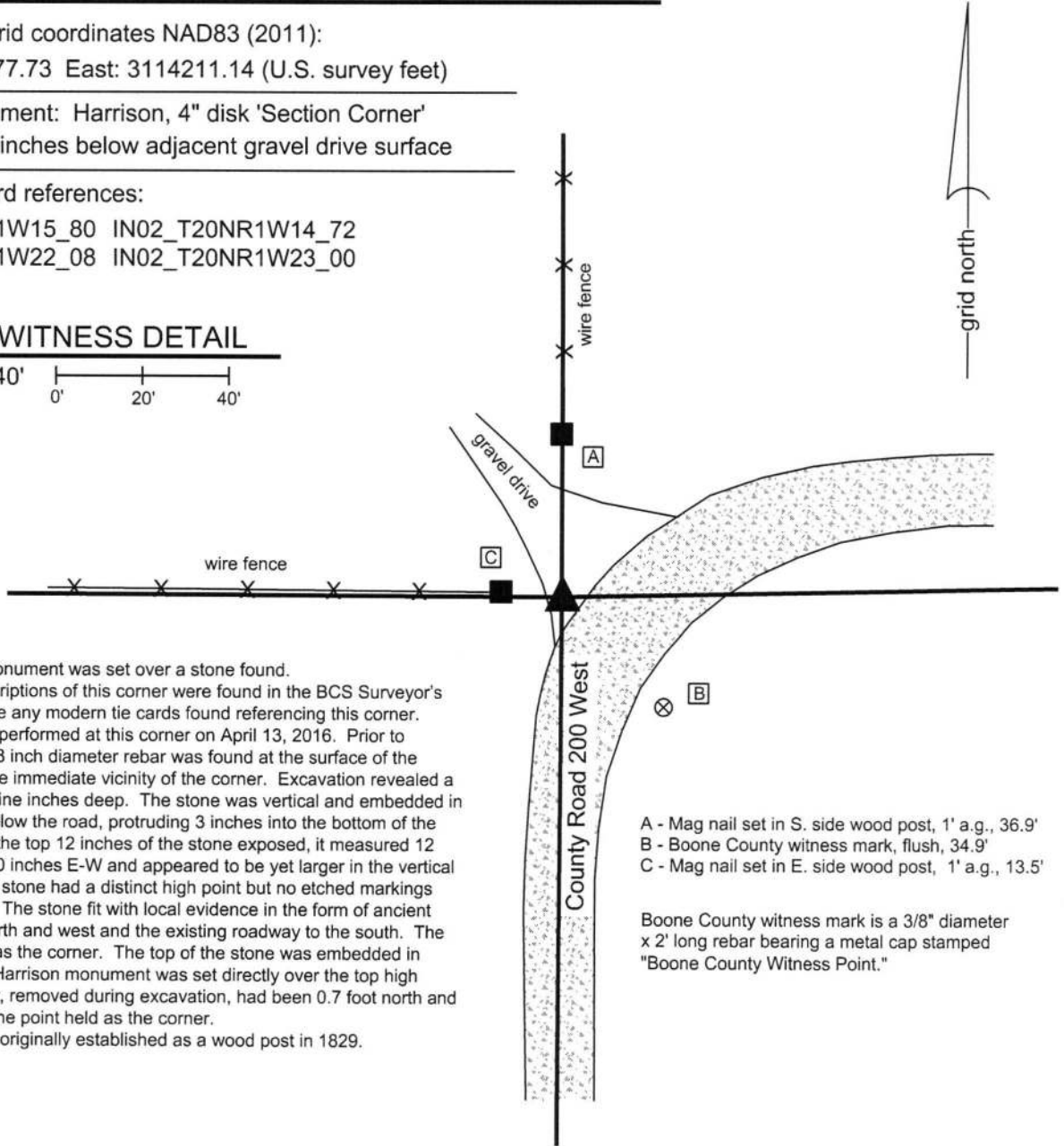
Indiana tie card references:

IN02_T20NR1W15_80 IN02_T20NR1W14_72

IN02_T20NR1W22_08 IN02_T20NR1W23_00

CORNER WITNESS DETAIL

SCALE 1" = 40'



The Harrison monument was set over a stone found. No specific descriptions of this corner were found in the BCS Surveyor's Record, nor were any modern tie cards found referencing this corner. Excavation was performed at this corner on April 13, 2016. Prior to excavation, a 5/8 inch diameter rebar was found at the surface of the gravel road in the immediate vicinity of the corner. Excavation revealed a stone found at nine inches deep. The stone was vertical and embedded in the clay layer below the road, protruding 3 inches into the bottom of the road bed. With the top 12 inches of the stone exposed, it measured 12 inches N-S by 10 inches E-W and appeared to be yet larger in the vertical dimension. The stone had a distinct high point but no etched markings were observed. The stone fit with local evidence in the form of ancient fences to the north and west and the existing roadway to the south. The stone was held as the corner. The top of the stone was embedded in concrete and a Harrison monument was set directly over the top high point. The rebar, removed during excavation, had been 0.7 foot north and 1.3 feet east of the point held as the corner. This corner was originally established as a wood post in 1829.

- A - Mag nail set in S. side wood post, 1' a.g., 36.9'
- B - Boone County witness mark, flush, 34.9'
- C - Mag nail set in E. side wood post, 1' a.g., 13.5'

Boone County witness mark is a 3/8" diameter x 2' long rebar bearing a metal cap stamped "Boone County Witness Point."



Kenneth E. Hedge
 Kenneth E. Hedge, County Surveyor

James S. Swift
 James S. Swift, IN LS 20200054
 March 23, 2017

Washington Township

Section 15 T20N, R1W	Section 14 T20N, R1W
Section 22 T20N, R1W	Section 23 T20N, R1W

SECTION CORNER RECORD

NW 950-100

BOONE COUNTY SURVEYOR'S OFFICE

State Plane grid coordinates NAD83 (CORS96):

North: 1795843.34 East: 3119477.99 (U.S. survey feet)

Type of monument: Harrison, 4" disk 'Section Corner'

Depth: six inches below adjacent gravel road surface

Indiana tie card references:

IN02_T20NR1W14_44 IN02_T20NR1W13_36

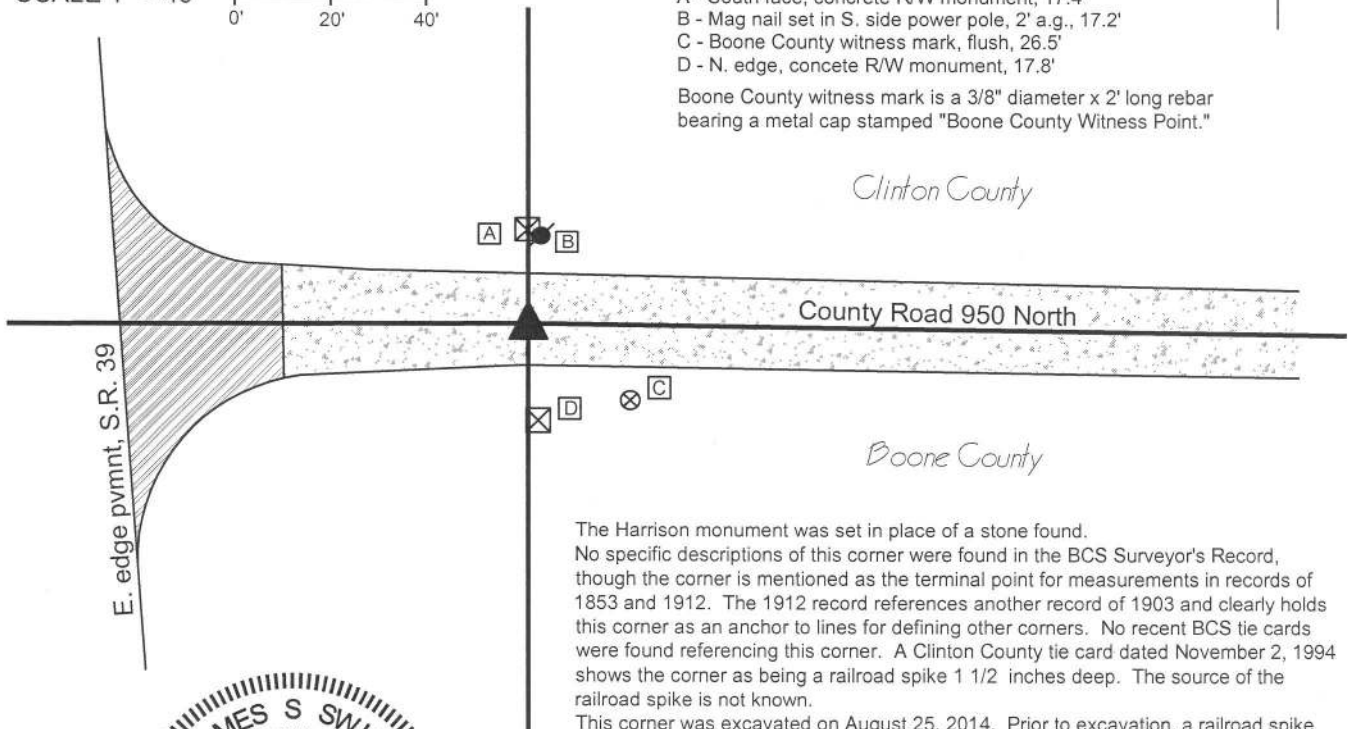


CORNER WITNESS DETAIL

SCALE 1" = 40'

- A - South face, concrete R/W monument, 17.4'
- B - Mag nail set in S. side power pole, 2' a.g., 17.2'
- C - Boone County witness mark, flush, 26.5'
- D - N. edge, concrete R/W monument, 17.8'

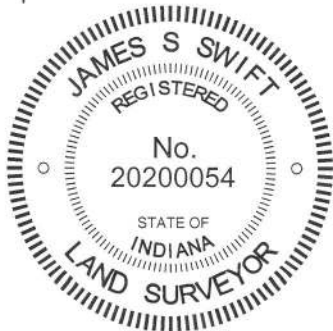
Boone County witness mark is a 3/8" diameter x 2' long rebar bearing a metal cap stamped "Boone County Witness Point."



The Harrison monument was set in place of a stone found. No specific descriptions of this corner were found in the BCS Surveyor's Record, though the corner is mentioned as the terminal point for measurements in records of 1853 and 1912. The 1912 record references another record of 1903 and clearly holds this corner as an anchor to lines for defining other corners. No recent BCS tie cards were found referencing this corner. A Clinton County tie card dated November 2, 1994 shows the corner as being a railroad spike 1 1/2 inches deep. The source of the railroad spike is not known.

This corner was excavated on August 25, 2014. Prior to excavation, a railroad spike was found at 4 inches deep in agreement with the distance ties shown on the Clinton County tie card. Excavation revealed a stone found at 12 inches deep west of the railroad spike. The stone was 7 inches tall, 5 inches E-W by 4 inches N-S. It was vertical and embedded in the clay layer below the road, protruding 2 inches out of the clay into the bottom of the road bed. The stone is smaller than most stones found marking corners throughout the county but otherwise matched the characteristics of a corner stone, being vertical, embedded in the clay layer below the road and oriented in cardinal directions. The stone also had a distinct high point. Excavation of a large area around the stone revealed no further evidence of the corner. The stone was accepted as the best available evidence of the corner and held as marking the corner. The stone was removed and a Harrison monument was set in place of the stone at the horizontal position of the top, high point of the rock. The railroad spike, removed during excavation, had been 0.9 foot east and 0.15 foot south of the top, high point of the stone.

This corner was originally established as a wood post in 1822.

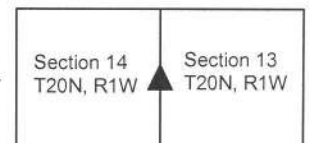


Kenneth E. Hedge, County Surveyor

James S. Swift, IN LS 20200054

March 27, 2015

Jackson Township
 Clinton County
 Washington Twp
 Boone County



PHOTOGRAPHIC DOCUMENTATION

Date of photography: August 25, 2014

The stone as originally found.



The stone, exposed. Viewed from the east.



Excavation below the stone, showing the cross section of the roadway. Note the distinct clay layer in which the stone was embedded.



For details and documentation, refer to related sheet "Section Corner Record."

View from the east, looking across the stone, across State Road 39 and west along the County Line Road (Boone C.R. 950 North)



SECTION CORNER RECORD

NW 950-150

BOONE COUNTY SURVEYOR'S OFFICE

State Plane grid coordinates NAD83 (CORS96):

North: 1795837.05 East: 3116851.99 (U.S. survey feet)

Type of monument: Harrison, 4" disk 'Section Corner'

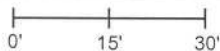
Depth: six inches below adjacent gravel road surface

Indiana tie card references:

IN02_T20NR1W14_40

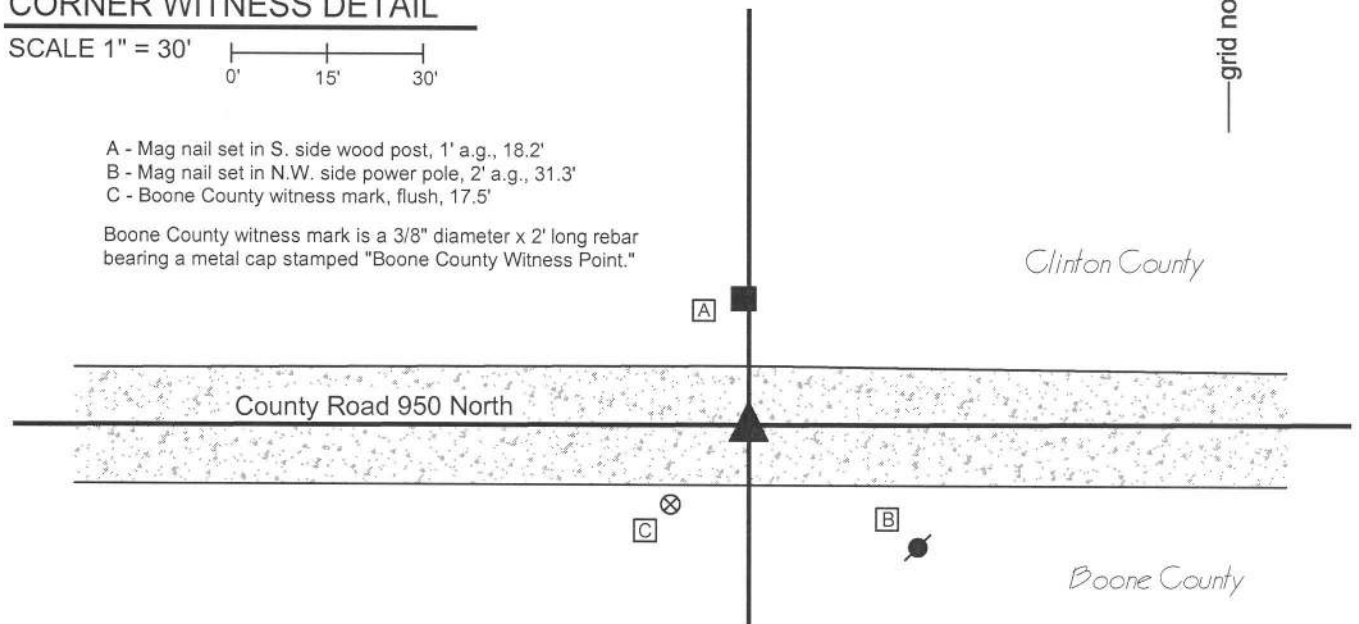
CORNER WITNESS DETAIL

SCALE 1" = 30'



- A - Mag nail set in S. side wood post, 1' a.g., 18.2'
- B - Mag nail set in N.W. side power pole, 2' a.g., 31.3'
- C - Boone County witness mark, flush, 17.5'

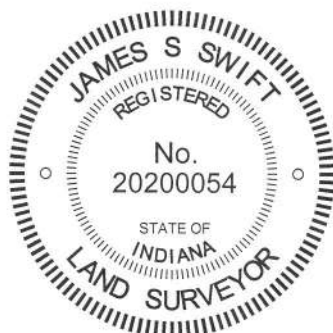
Boone County witness mark is a 3/8" diameter x 2' long rebar bearing a metal cap stamped "Boone County Witness Point."




The Harrison monument was set in place of a wood post found in embedded in the clay layer below the road.

A BCS record of October 14, 1912 which appears to reference another record of October 15, 1903 explains the establishment of the center quarter corner of the section and states "Set rock + 8x14x17." Recent tie cards referencing this corner were found neither in the Boone County nor in the Clinton County Surveyors' Offices.

This corner was excavated on August 25, 2014. Prior to excavation, a disturbed rebar was found flush with the surface of the gravel road, in the center of the road in line with an old wood post on the north side of the road. A stone was also observed at the surface of the road approximately 8 feet to the west. Excavation of the rock to the west revealed it to be much larger than the stone called for in the 1912 record. The orientation and characteristics of this rock did not match those typically associated with section corner stones. Excavation at the position of the found rebar revealed a variety of evidence. One stone was found at 2 inches below grade. The stone appeared to be broken into several pieces and leaning to the east. The combined parts of the broken rock added up to 16 inches tall by 14 inches E-W by 12 inches N-S. Another stone was found near the northeast edge of the broken rock, being at 12 inches deep and measuring 5 inches tall by 8 inches E-W by 6 inches N-S. Amidst these rocks, evidence of a wood post was found. The first evidence of the post was found at 10 inches. Excavation of the area revealed the post to be quite distinct, square and 3 inches by 3 inches at approximately 16 inches deep. Further excavation revealed the post to be vertical, embedded in the clay layer below the road and of substantial, though not fully determined, height. Further excavation of an area extending 2 feet south, 3 feet north, 1 foot east and 4 feet west revealed no further evidence of the corner. As the found stones were generally above the post, the found fragments of the post represented the deepest and presumably the oldest evidence at the corner. The rebar, stones and upper portion of the old post were removed. A Harrison monument was set over the lower portion of the post. The disturbed rebar originally found prior to excavation had been 0.25 foot west and 0.25 foot south of the post, which means it was essentially driven along the southwest edge of the post. No explanation is offered as to why the 8x14x17 stone called for in the 1912 record was not found. This corner is not an original federal corner and was not established by the federal surveyors.



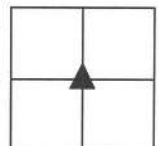

Kenneth E. Hedge, County Surveyor


James S. Swift, IN LS 20200054
March 27, 2015

Section 14
T20N, R1W

Jackson Township
Clinton County

Washington Twp
Boone County



PHOTOGRAPHIC DOCUMENTATION

Date of photography: August 25, 2014

The stone to the west of the corner.



The several pieces of the broken stone near the corner, as originally found, and the post on the north side of the road.



For details and documentation, refer to related sheet "Section Corner Record."

The fragments of wood post embedded in the road. Being the lowest evidence found, this post was held as marking the corner.



View from the west, looking across one of the pieces of the broken stone and east along County Road 950 North.



SECTION CORNER RECORD

BOONE COUNTY SURVEYOR'S OFFICE

NW 950-200

State Plane grid coordinates NAD83 (CORS96):
 North: 1795830.92 East: 3114209.95 (U.S. survey feet)

Type of monument: Harrison, 4" disk 'Section Corner'
 Depth: six inches below adjacent gravel road surface

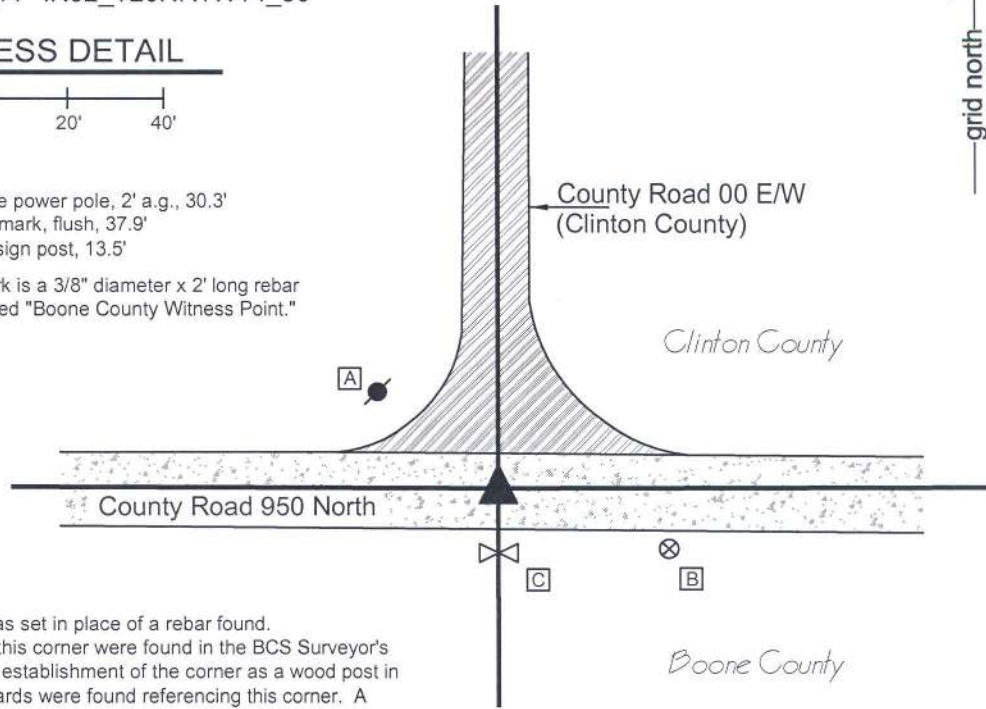
Indiana tie card references:
 IN02_T20NR1W15_44 IN02_T20NR1W14_36

CORNER WITNESS DETAIL

SCALE 1" = 40'

- A - Mag nail set in S.E. side power pole, 2' a.g., 30.3'
- B - Boone County witness mark, flush, 37.9'
- C - East edge, metal road sign post, 13.5'

Boone County witness mark is a 3/8" diameter x 2' long rebar bearing a metal cap stamped "Boone County Witness Point."



The Harrison monument was set in place of a rebar found. No specific descriptions of this corner were found in the BCS Surveyor's Record beyond the original establishment of the corner as a wood post in 1829. No recent BCS tie cards were found referencing this corner. A Clinton County tie card dated October 15, 1981 shows the corner as "bar" with no documentation of source. This corner was excavated on September 2, 2014. Prior to excavation a rebar was found at 5 inches deep in the gravel road. Excavation of an area extending 4 feet in all directions yielded no further evidence of the corner. The bottom of the road bed was found at 18 inches deep, below which was the dense clay commonly found under the road in Boone County. Excavation was performed to at least 20 inches deep. The rebar fit with local evidence of the corner in the form of the centers of the roads to the north, east and west. None of the distance tie references from the 1981 Clinton County tie card were found. The card graphically demonstrates the "bar" to be at the intersection of the road and it is believed that the found rebar is the same monument as shown on the Clinton County tie card. Having found no contrary evidence, the rebar was accepted as marking the corner. The rebar was removed from the road and replaced with a Harrison monument set in the same position.



Kenneth E. Hedge, County Surveyor

James S. Swift, IN LS 20200054
 March 27, 2015

Jackson Township
 Clinton County
 Washington Twp
 Boone County

