

SECTION CORNER RECORD

NE 300-1000

BOONE COUNTY SURVEYOR'S OFFICE

State Plane grid coordinates NAD83 (2011):

North: 1762530.92 East: 3177594.07 (U.S. survey feet)

Type of monument: Harrison, 4" disk 'Section Corner'

Depth: flush with adjacent road surface

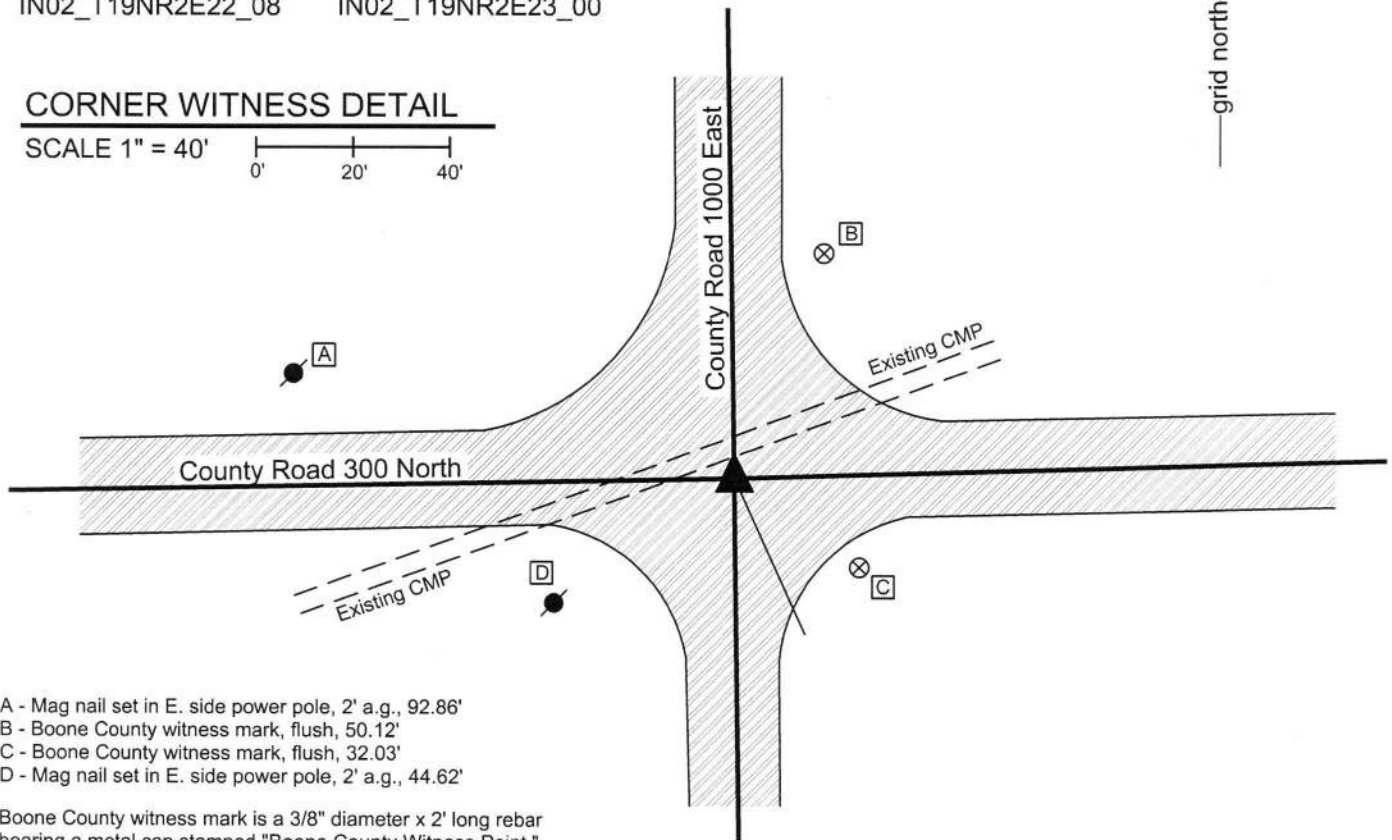
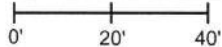
Indiana tie card references:

IN02_T19NR2E15_80 IN02_T19NR2E14_72

IN02_T19NR2E22_08 IN02_T19NR2E23_00

CORNER WITNESS DETAIL

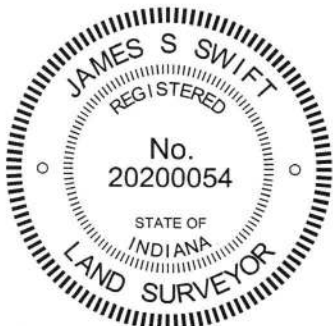
SCALE 1" = 40'



- A - Mag nail set in E. side power pole, 2' a.g., 92.86'
- B - Boone County witness mark, flush, 50.12'
- C - Boone County witness mark, flush, 32.03'
- D - Mag nail set in E. side power pole, 2' a.g., 44.62'

Boone County witness mark is a 3/8" diameter x 2' long rebar bearing a metal cap stamped "Boone County Witness Point."

The Harrison monument was set in the same position as a Harrison monument previously set. This corner is dominated by the presence of a large culvert pipe crossing the intersection from the southwest to the northeast quadrant, the installation of which would have destroyed any ancient evidence or monumentation at the actual corner. A witness stone described in an 1862 record as being southeast of the corner was not found. In 2011, a P.K. nail found at the center of the intersection was replaced with a Harrison Monument in the same position. Subsequently, the culvert pipe was replaced by the Boone County Highway Department, during which process the Harrison monument was removed. This monument was replaced with another Harrison monument in October, 2015.



Kenneth E. Hedge
Kenneth E. Hedge, County Surveyor

James S. Swift
James S. Swift, IN LS 20200054
March 23, 2017

Marion Township

Section 15 T19N, R2E	Section 14 T19N, R2E
Section 22 T19N, R2E	Section 23 T19N, R2E

SECTION CORNER RECORD

NE 300-1050

BOONE COUNTY SURVEYOR'S OFFICE

State Plane grid coordinates NAD83 (CORS96):

North: 1762605.49 East: 3180253.53 (U.S. survey feet)

Type of monument: Harrison, 4" disk 'Section Corner'

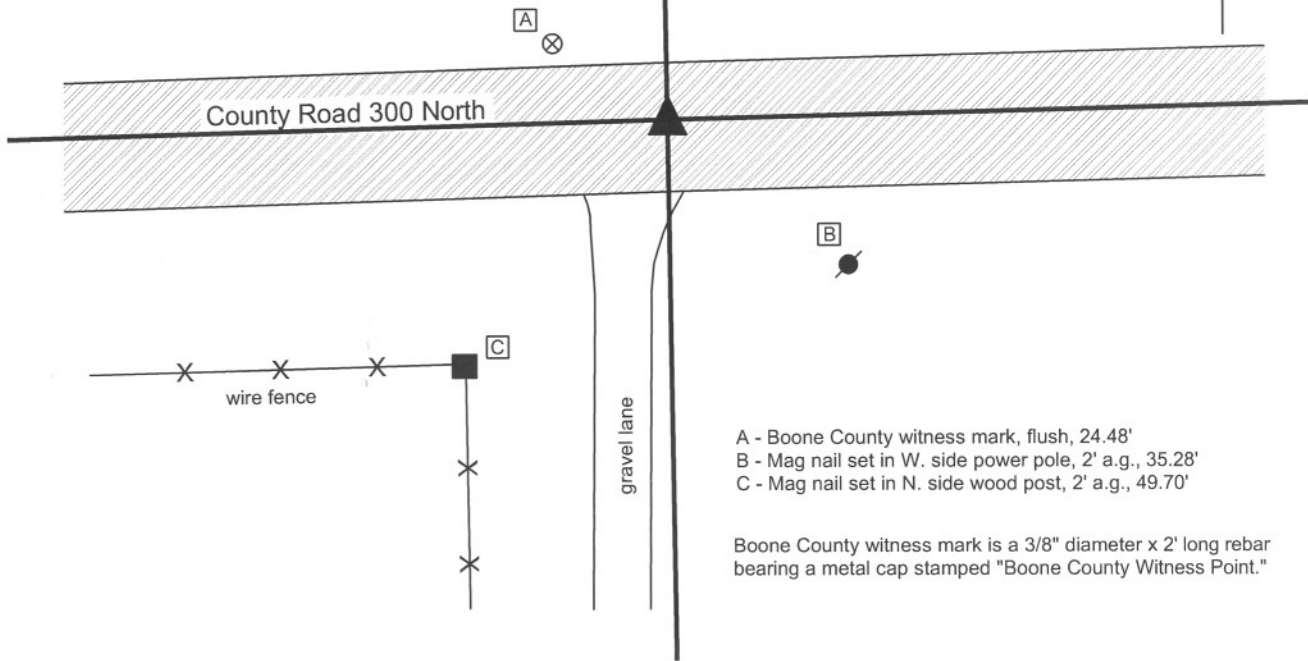
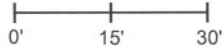
Depth: One inch below adjacent road surface

Indiana tie card references:

IN02_T19NR2E14_76 IN02_T19NR2E23_04

CORNER WITNESS DETAIL

SCALE 1" = 30'



- A - Boone County witness mark, flush, 24.48'
- B - Mag nail set in W. side power pole, 2' a.g., 35.28'
- C - Mag nail set in N. side wood post, 2' a.g., 49.70'

Boone County witness mark is a 3/8" diameter x 2' long rebar bearing a metal cap stamped "Boone County Witness Point."

The harrison monument was set over a stone found.

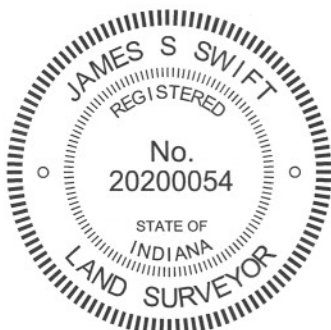
A BCS record of November 25, 1910 states "Found rock here 12.60 north of rock set by Huckstep; rock at B found to be correct by other measurements." It is noted that "B" refers to this corner, as noted on the diagram of section 23. It is also noted that the reference to Huckstep is a reference to a record of March 12, 1894 which shows a rock set a corner denoted "t" with the explanation "Reestablished 12.60 South of B. Set Rock + 18.12.7 at corner. Set Rock + 2 1/2.6.5 under."

A BCS tie card dated April 17, 1972 states "no stone, RRR put in." A BCS tie card dated June 3, 1974 states "no stone found."

This corner was excavated on October 25, 2011. Prior to excavation a railroad rail was found 2 inches deep in a hole in the asphalt. Excavation revealed a stone found at 27 inches deep. The stone is embedded in the clay layer below the road bed with the top of the stone at the bottom of the road bed. With the top 7 inches of the stone exposed it measures 13 inches E-W by 12 inches N-S. The total height of the stone was not measured. No specific marks were found on the stone. The portion of the stone exposed is generally round. The top high point, which is the same as the top, center point was held as specifically making the corner. A harrison monument was set directly above this point.

The railroad rail, removed during excavation, had been 0.3 foot south and 0.9 foot west of the stone.

This corner was originally established as a wood post in July, 1821.



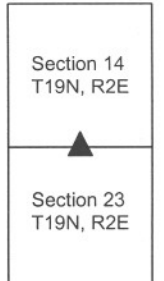
Kenneth E. Hedge

 Kenneth E. Hedge, County Surveyor

James S. Swift

 James S. Swift, IN LS 20200054
 March 1, 2012

Marion Twp



PHOTOGRAPHIC DOCUMENTATION

Date of photography: March 25, 2011

View of the stone as first exposed.



View of the stone from the east.



View from the east, looking across the stone (in shadows) and west along County Road 300 North.



Same view as above after the stone had been exposed to the air long enough to dry.



View of the stone from above.



For details and documentation, refer to related sheet "Section Corner Record."

SECTION CORNER RECORD

NE 300-1100

BOONE COUNTY SURVEYOR'S OFFICE

State Plane grid coordinates NAD83 (NSRS 2007):

North: 1762667.88 East: 3182916.59 (U.S. survey feet)

Type of monument: Harrison, 4" disk 'Section Corner'

Depth: One inch below adjacent road surface

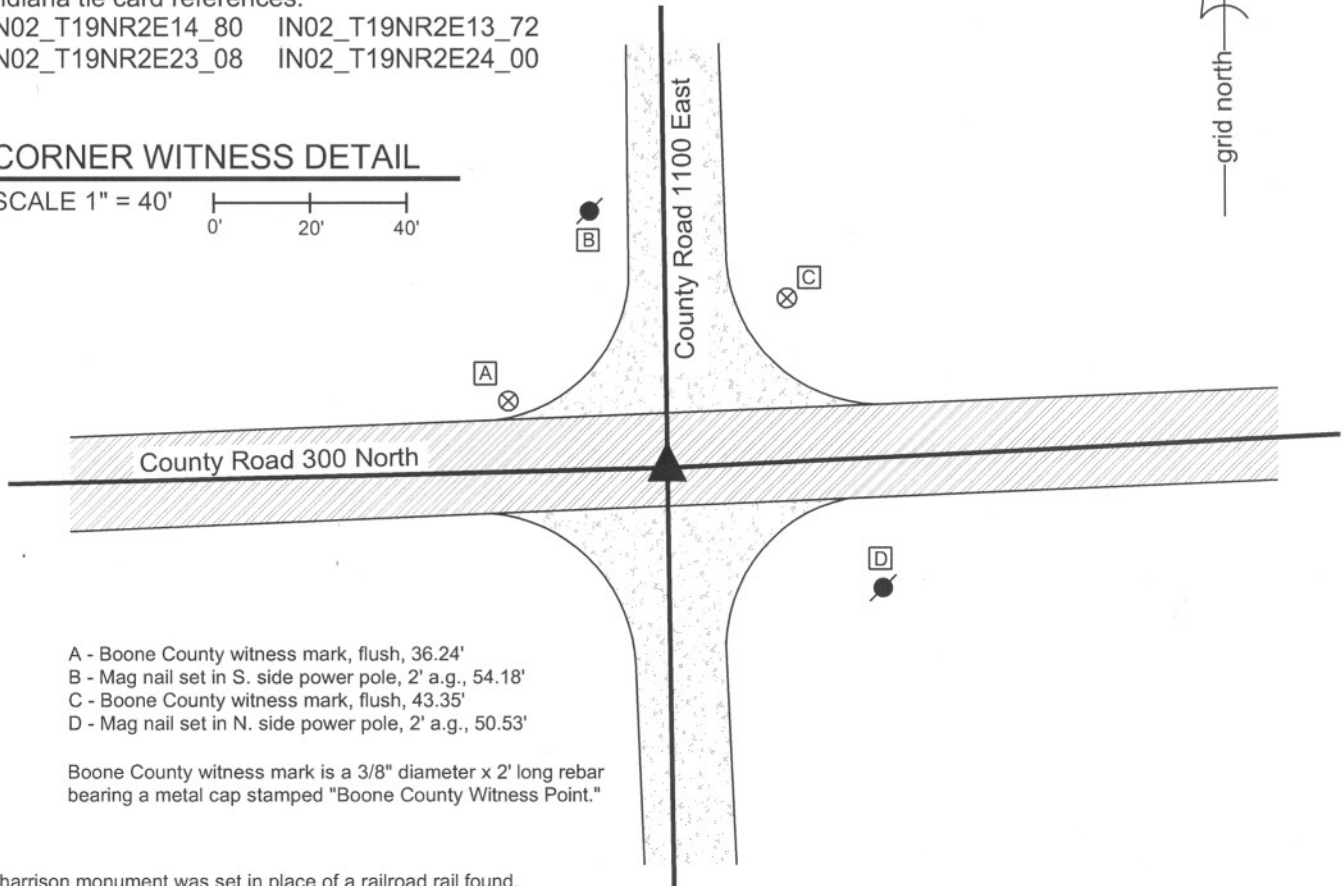
Indiana tie card references:

IN02_T19NR2E14_80 IN02_T19NR2E13_72

IN02_T19NR2E23_08 IN02_T19NR2E24_00

CORNER WITNESS DETAIL

SCALE 1" = 40'



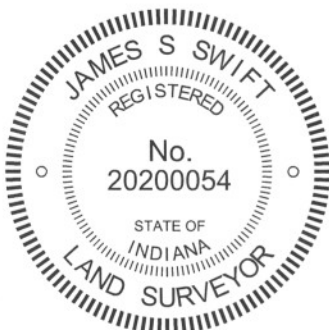
- A - Boone County witness mark, flush, 36.24'
- B - Mag nail set in S. side power pole, 2' a.g., 54.18'
- C - Boone County witness mark, flush, 43.35'
- D - Mag nail set in N. side power pole, 2' a.g., 50.53'

Boone County witness mark is a 3/8" diameter x 2' long rebar bearing a metal cap stamped "Boone County Witness Point."

The Harrison monument was set in place of a railroad rail found.

A BCS record of January 20 & 26, 1900 states "dropped large rock at point." A BCS record of January 17, 1925 states "Rock, found in place (set two more rocks above)." No BCS tie card was found referencing this corner, but field notes from a BCS crew dated June 17, 1974 states "No stone. Found RRR." This corner was excavated on September 3, 2010. Prior to excavation a mag nail was visible in a hole at 2 inches below the surrounding asphalt. Excavation revealed a vertical section of railroad rail at 4 inches deep, below the nail. No other evidence of the corner was found in an area of excavation which extended to 4.5 feet N, 4.5 feet S, 2.5 feet W and 5.0 feet E of the mag and rail. The clay layer below the road begins at 2.5 feet deep. Excavation extended to or into the top of the clay layer. The stones called for in the previous records were not found. It is noted that the rail was found in 1974 but no source information was found pertaining to the establishment of the rail. It is known that the standard procedure of BCS field crews in the late 1960s and early 1970s was to remove a stone or stones, if found, and replace it or them with a vertical section of rail. It is also known that rails were set in that era in the event that no stone was found. The presence of the rail may indicate that the record stones were found, removed and replaced with the rail prior to the 1974 field work, but no record was found to demonstrate this and it is not known whether the rail replaced the stones or was set independently. The Harrison monument was set in the position of the found nail and rail, both removed during excavation.

This corner was originally established as a wood post in June, 1821.



Kenneth E. Hedge
 Kenneth E. Hedge, County Surveyor

James S. Swift
 James S. Swift, IN LS 20200054
 July 25, 2011

Marion Township

Section 14 T19N, R2E	Section 13 T19N, R2E
Section 23 T19N, R2E	Section 24 T19N, R2E

SECTION CORNER RECORD

NE 350-1000

BOONE COUNTY SURVEYOR'S OFFICE

State Plane grid coordinates NAD83 (CORS96):

North: 1765179.68 East: 3177551.48 (U.S. survey feet)

Type of monument: Harrison, 4" disk 'Section Corner'

Depth: flush with adjacent road surface

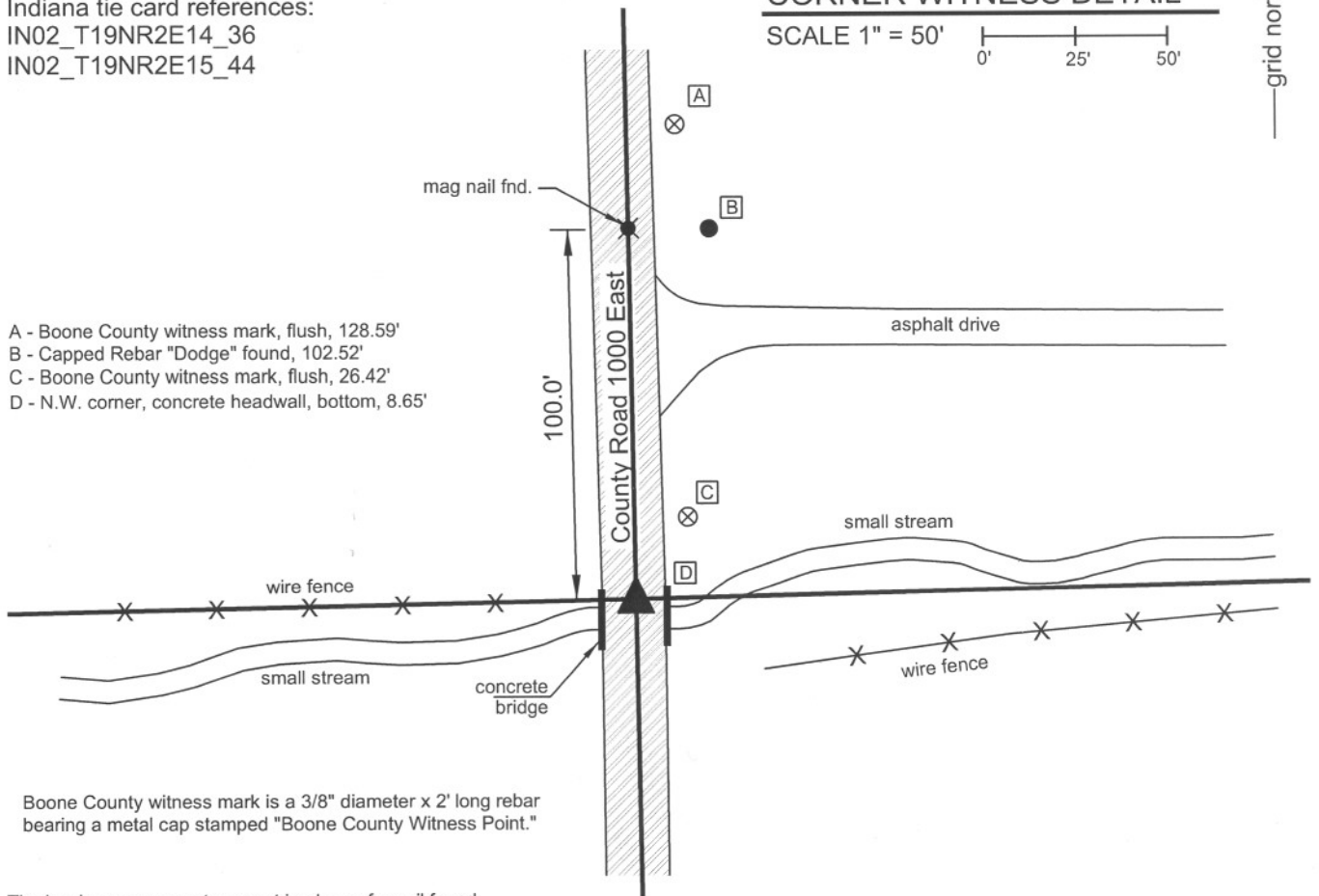
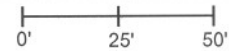
Indiana tie card references:

IN02_T19NR2E14_36

IN02_T19NR2E15_44

CORNER WITNESS DETAIL

SCALE 1" = 50'



- A - Boone County witness mark, flush, 128.59'
- B - Capped Rebar "Dodge" found, 102.52'
- C - Boone County witness mark, flush, 26.42'
- D - N.W. corner, concrete headwall, bottom, 8.65'

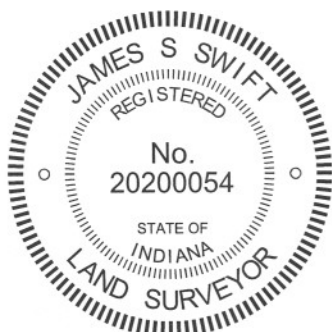
Boone County witness mark is a 3/8" diameter x 2' long rebar bearing a metal cap stamped "Boone County Witness Point."

The harrison monument was set in place of a nail found.

A BCS record of April 23, 1868 states "Reestablished from roots of trees. Set Rock 15.8. by 7 marked +." No recent BCS tie cards were found referencing this corner.

This corner was excavated on November 21, 2011. The corner falls in a concrete bridge over a small stream. There was no expectation that the record stone may be found. The description of the adjoining parcel on the northeast, recorded as Instrument 200500512566 in the Boone County Recorder's Office, calls for the corner and a west line of 100.00 feet. A mag nail was found in the center of County Road 1000 East in line with a vinyl fence to the east. A faint reading was detected on a magnetic locator at a point 100 feet south of the nail. Excavation of a small hole centered on this reading revealed a surveyor's type nail at 3.5 inches deep, below the asphalt and driven into the concrete bridge. The nail fits well with local evidence of the corner, being in the center of the N-S road and falling at the easterly extension of the old fence to the west and at the westerly extension of that portion of the fence to the east, beyond where the fence runs along the south edge of the small stream. The nail was held as marking the corner. A harrison monument was set at the position of the nail

This corner was originally established as a wood post in July, 1821.



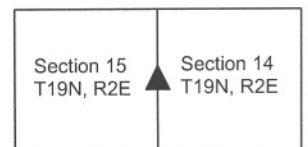
Kenneth E. Hedge

 Kenneth E. Hedge, County Surveyor

James S. Swift

 James S. Swift, IN LS 20200054
 March 1, 2012

Marion Township



SECTION CORNER RECORD

NE 350-1100

BOONE COUNTY SURVEYOR'S OFFICE

State Plane grid coordinates NAD83 (NSRS 2007):

North: 1765300.89 East: 3182883.36 (U.S. survey feet)

Type of monument: Harrison, 4" disk 'Section Corner'

Depth: Six inches below adjacent gravel road surface.

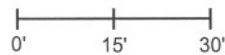
Indiana tie card references:

IN02_T19NR2E13_36

IN02_T19NR2E14_44

CORNER WITNESS DETAIL

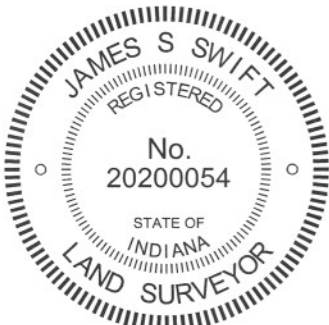
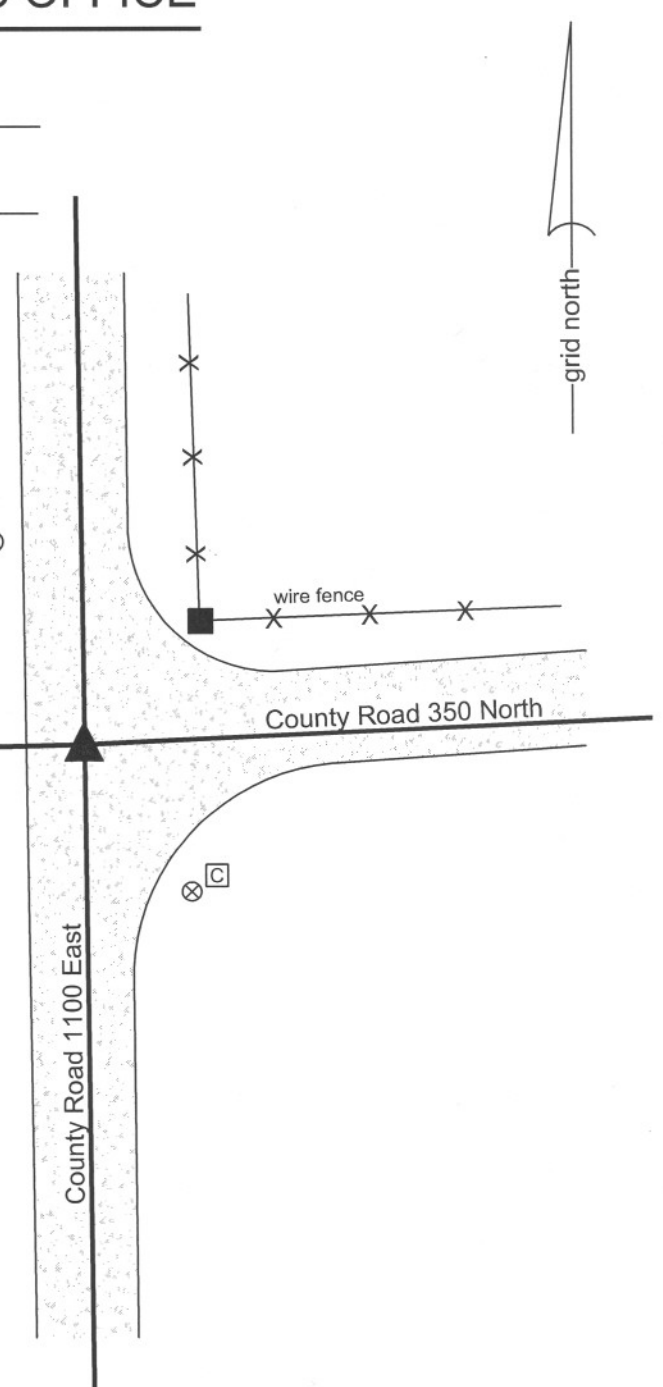
SCALE 1" = 30'



- A - Mag nail set in E. side power pole, 2' a.g., 19.40'
- B - Boone County witness mark, flush, 34.78'
- C - Boone County witness mark, flush, 28.38'

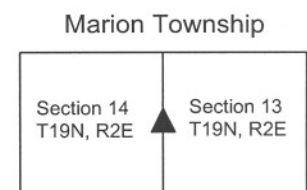
Boone County witness mark is a 3/8" diameter x 2' long rebar bearing a metal cap stamped "Boone County Witness Point."

The harrison monument was set in place of a railroad rail found. A BCS record of January 20 & 26, 1900 states "Set rock, 18x9x12 + (small rock beneath)." A BCS tie card dated July 19, 1974 states "Stone Found + RRR." This corner was excavated on September 3, 1974. Prior to excavation a railroad rail was found at the surface, apparently leaning to the south and east. Excavation revealed that the rail was leaning substantially, but was not leaning over any other object. Given the fact that the top of the rail was flush with the surface of the gravel road, it is reasonable to conclude that the rail had been hit by a road grader, probably repeatedly, and leaned over. The rail was stood vertical in the position of the bottom of the rail as originally found. Only one distance tie remains from the 1974 tie card, being the wood corner post in the northeast quadrant of the intersection. This post is also leaning, hence the distance tie is compromised, but the distance from the rail, as stood vertical, to the approximate position of the tie point matches closely with the 1974 tie card. No stone was found. While the 1974 tie card states "Stone Found + RRR" it is not clear what was done, if anything, to the stone or rail. The found rail represents the only physical evidence of the corner found and was therefore accepted as the best available evidence of the stone found in 1974 and held as marking the corner. The rail was removed and the harrison monument was set in the position of the bottom of the rail as originally found. This corner was originally established in June, 1821.



Kenneth E. Hedge
 Kenneth E. Hedge, County Surveyor

James S. Swift
 James S. Swift, IN LS 20200054
 July 25, 2011



SECTION CORNER RECORD

NE 400-1000

BOONE COUNTY SURVEYOR'S OFFICE

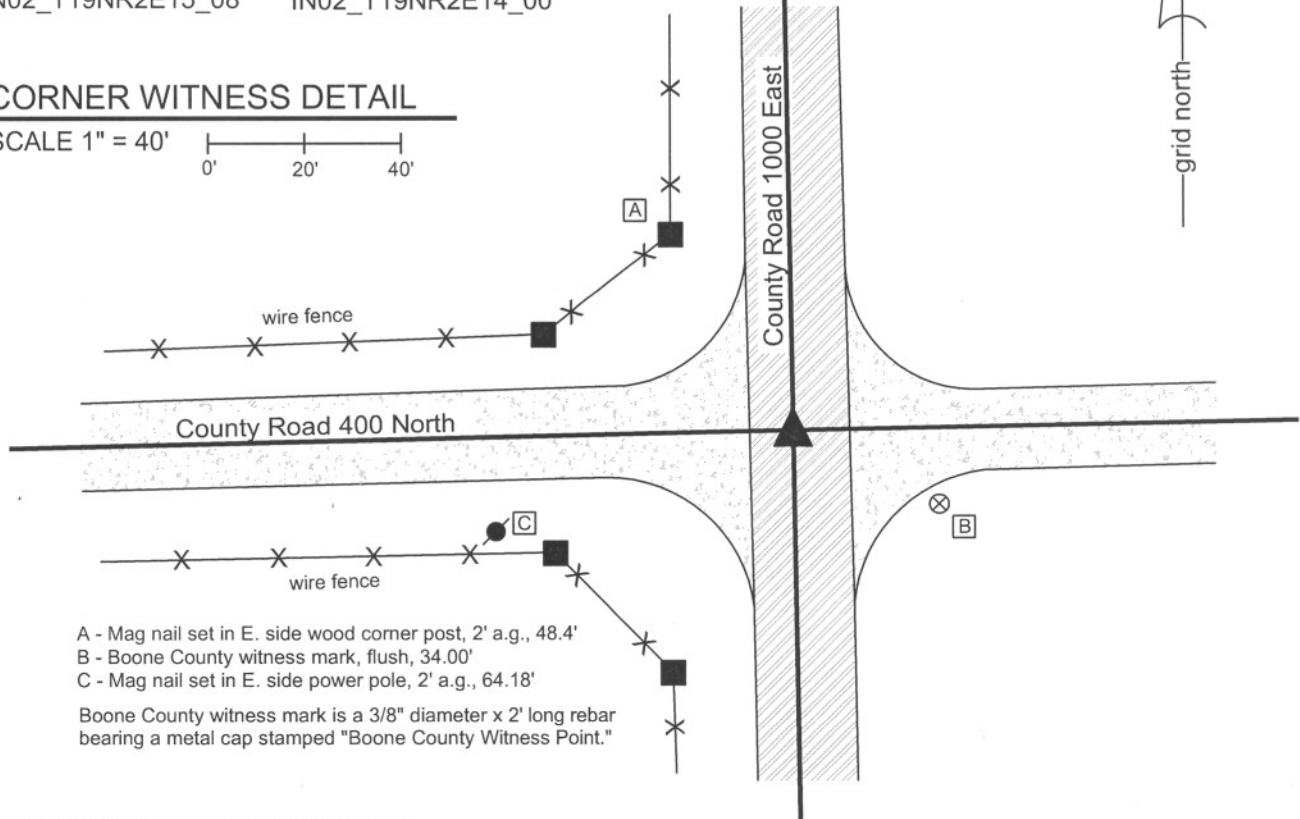
State Plane grid coordinates NAD83 (NSRS 2007):
 North: 1767835.66 East: 3177506.88 (U.S. survey feet)

Type of monument: Harrison, 4" disk 'Section Corner'
 Depth: One inch below adjacent road surface

Indiana tie card references:
 IN02_T19NR2E10_80 IN02_T19NR2E11_76
 IN02_T19NR2E15_08 IN02_T19NR2E14_00

CORNER WITNESS DETAIL

SCALE 1" = 40'
 0' 20' 40'

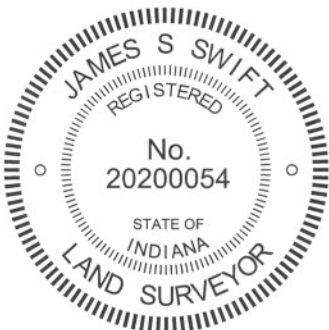


- A - Mag nail set in E. side wood corner post, 2' a.g., 48.4'
- B - Boone County witness mark, flush, 34.00'
- C - Mag nail set in E. side power pole, 2' a.g., 64.18'

Boone County witness mark is a 3/8" diameter x 2' long rebar bearing a metal cap stamped "Boone County Witness Point."



The harrison monument was set over a stone found.
 No references to this corner were found in the old BCS Surveyor's Record. No recent tie cards were found for this corner.
 This corner was excavated on August 27, 2010. Prior to excavation a nail was visible in a hole 1 inch below the surrounding asphalt. Excavation revealed a 1/2 inch diameter rebar found at 6 inches deep, 0.2 foot north of the nail. Further excavation revealed a stone found at 31 inches deep. The stone is fully embedded in the clay layer below the road with the top of the stone at the bottom of the road bed. The stone is 18 inches N-S by 12 inches E-W and approximately 8 inches tall, as measured on the northeast edge. The characteristic of this stone, embedded in the clay and horizontal, rather than vertical, fits the characteristics of other corner stones which appear to have been intentionally set but are either not mentioned in the BCS Surveyor's Record or are mentioned as "a stone that was set" (meaning the stone was found and appeared to be intentionally set). It is presumed that these stones were set by pioneer settlers or surveyors prior to the second half of the 1800s when the common practice was adopted by County Surveyors of setting the stones in a vertical orientation. The stone was left in place and the harrison monument was set over the approximate top, center of the stone. The nail, removed during excavation, had been 0.7 foot north and 1.2 feet east of this point.
 This corner was originally established as a wood post in July, 1821.



Kenneth E. Hedge
 Kenneth E. Hedge, County Surveyor

James S. Swift
 James S. Swift, IN LS 20200054
 July 25, 2011

Marion Township

Section 10 T19N, R2E	Section 11 T19N, R2E
Section 15 T19N, R2E	Section 14 T19N, R2E

PHOTOGRAPHIC DOCUMENTATION

Date of photography: August 27, 2010

View of the stone from above and east.



View of the stone from above and north.



View of the stone from above and west.



For details and documentation, refer to related sheet "Section Corner Record."

SECTION CORNER RECORD

NE 400-1050

BOONE COUNTY SURVEYOR'S OFFICE

State Plane grid coordinates NAD83 (NSRS 2007):

North: 1767888.85 East: 3180179.40 (U.S. survey feet)

Type of monument: Harrison, 4" disk 'Section Corner'

Depth: Six inches below the surface of the gravel road.

Indiana tie card references:

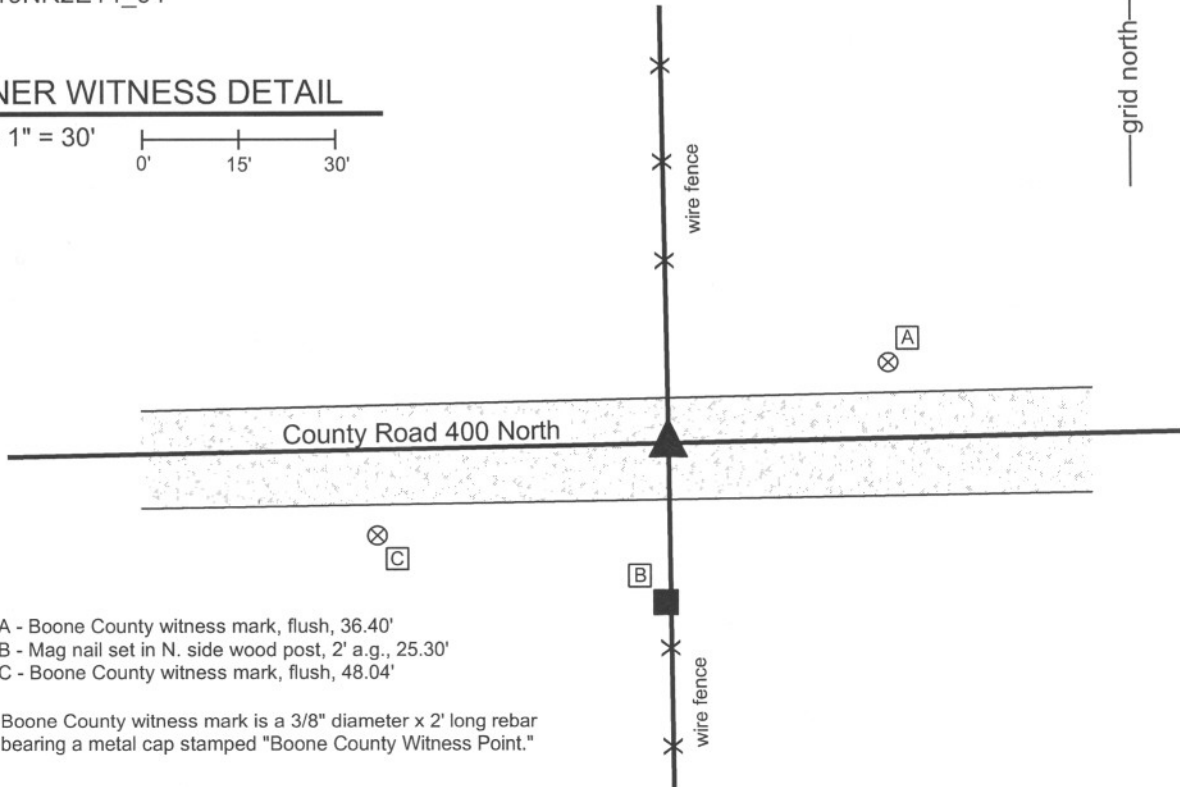
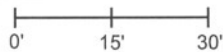
IN02_T19NR2E11_76

IN02_T19NR2E14_04



CORNER WITNESS DETAIL

SCALE 1" = 30'



- A - Boone County witness mark, flush, 36.40'
- B - Mag nail set in N. side wood post, 2' a.g., 25.30'
- C - Boone County witness mark, flush, 48.04'

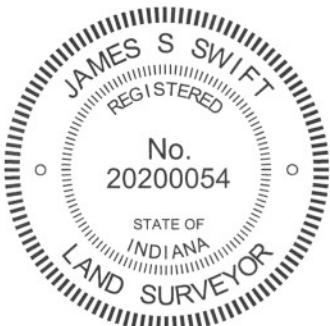
Boone County witness mark is a 3/8" diameter x 2' long rebar bearing a metal cap stamped "Boone County Witness Point."

The harrison monument was set in place of a railroad rail found.

A BCS tie card dated June 16, 1971 states "found stone, put in RRR." No specific descriptions of this corner were found in the old BCS Surveyor's Record, though the corner is mentioned as the terminal point of a measurement in 1853.

This corner was excavated on August 31, 2010. A railroad rail was found at 3 inches, leaning strongly towards the north and east. A 5/8 inch diameter rebar was found south and west of the rail and another 5/8 inch rebar was found north and west of the rail. No stone was found. It appears that the stone found in 1971 was removed and replaced with the rail, as was a common practice of BCS field crews from that time frame. It is known that the crews generally replaced the stone with a monument set vertically. The severe lean of the rail is probably due to displacement by a road grader. The rail was stood vertical by holding the position of the bottom of the 30 inch long section of rail. The top of the rail, as straightened, was approximately 4 inches south and 1 foot west of the top as originally found and also similar in position to one of the rebars found. The road bed in this area is approximately 8 inches thick. All found monuments were removed and a harrison monument was set in the position of the rail as stood vertical.

This corner was originally established in July, 1821.



Kenneth E. Hedge
Kenneth E. Hedge, County Surveyor

James S. Swift
James S. Swift, IN LS 20200054
July 25, 2011

Marion Twp

Section 11
T19N, R2E

Section 14
T19N, R2E

SECTION CORNER RECORD

NE 400-1100

BOONE COUNTY SURVEYOR'S OFFICE

State Plane grid coordinates NAD83 (NSRS 2007):
 North: 1767944.23 East: 3182847.82 (U.S. survey feet)

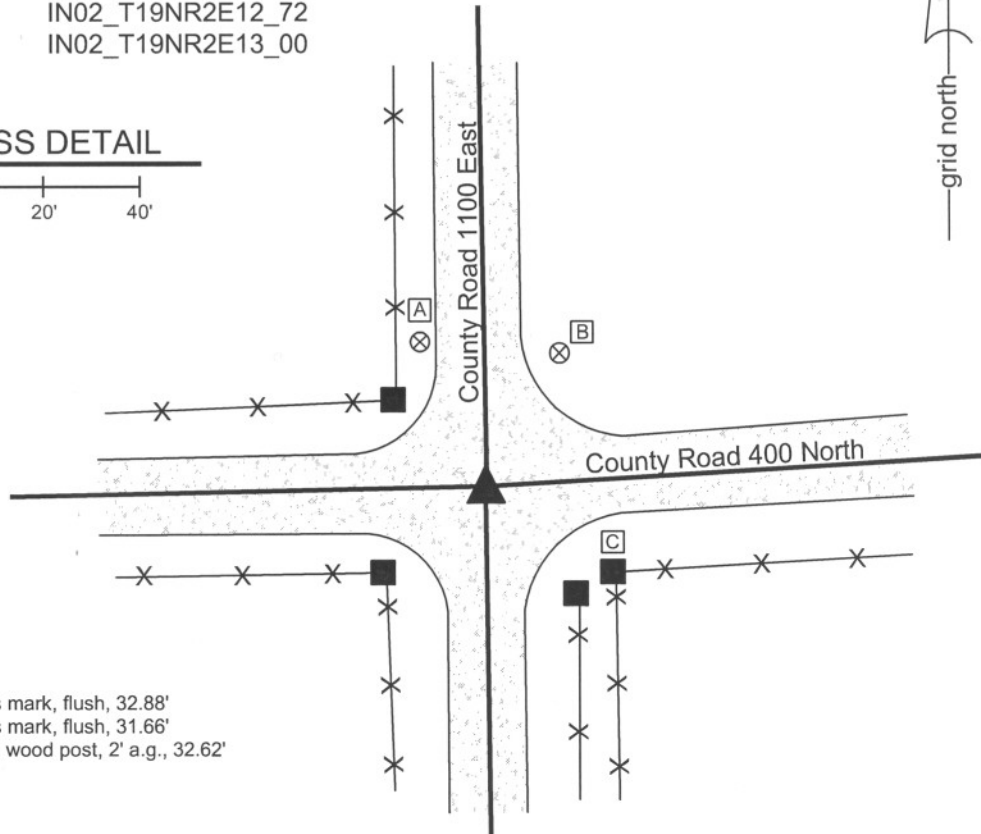
Type of monument: Harrison, 4" disk 'Section Corner'
 Depth: six inches below adjacent gravel road surface

Indiana tie card references:
 IN02_T19NR2E11_80 IN02_T19NR2E12_72
 IN02_T19NR2E14_08 IN02_T19NR2E13_00



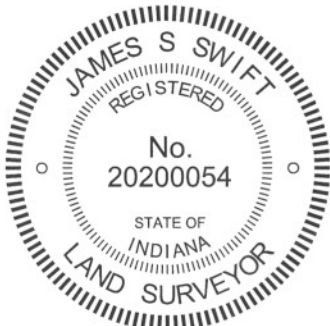
CORNER WITNESS DETAIL

SCALE 1" = 40'



- A - Boone County witness mark, flush, 32.88'
- B - Boone County witness mark, flush, 31.66'
- C - Mag nail set in N. side wood post, 2' a.g., 32.62'

The harrison monument was set in place of a stone found and also in place of the top of a section of railroad rail found leaning over the stone. A BCS record of May 7-8, 1861 states "Reestablished from one tree still some remains of the other. Set Stone 12.8 by 6 in." A BCS tie card dated July 19, 1974 states "Found stone + RRR."
 This corner was excavated on August 26, 2010. Prior to excavation, two 5/8 inch diameter rebars were adjacent to each other at approximately 3 inches below the surface of the gravel road. Excavation revealed the top of a railroad rail at approximately 4 inches, slightly south and east of the rebars. The rail was leaning substantially towards the south. Further excavation revealed that the rail was leaning over the top of a stone, the top of which was found at 13 inches below the level of the surface of the road. The stone was larger than the 1861 record stone, measuring 18 inches tall by 16 inches N-S by 12 inches E-W. Approximately the bottom 10 inches of the stone were embedded in the clay layer below the road while the top 8 inches were protruding into the base of the road. The stone was removed and no other evidence of the corner was found. Excavation extended 4 feet to the north but no further excavation was performed south of the corner due to the presence of a large bundled phone line crossing the intersection near the corner, per IUPPS. The rail was leaning such that the top of the rail was directly over the physical top, center of the stone. The rebars had been approximately three inches northwest of this point. The rebars, rail and stone were removed during excavation and a harrison monument was set at the position of the top of the rail and the top of the stone. This corner was originally established as a wood post in June, 1821.



Kenneth E. Hedge
 Kenneth E. Hedge, County Surveyor

James S. Swift
 James S. Swift, IN LS 20200054
 July 25, 2011

Marion Twp

Section 11 T19N, R2E	Section 12 T19N, R2E
Section 14 T19N, R2E	Section 13 T19N, R2E

PHOTOGRAPHIC DOCUMENTATION

Date of photography: September 13, 2010

View of the stone as first exposed.



View of the stone partially exposed.



View from the north, looking across the stone and south along County Road 1100 East.



View of the stone from above and north.



The stone and railroad rail (rail is in the grass) after being removed from the road bed.



For details and documentation, refer to related sheet "Section Corner Record."