

SECTION CORNER RECORD

NE 300-400

BOONE COUNTY SURVEYOR'S OFFICE

State Plane grid coordinates NAD83 (CORS96):

North: 1761652.77 East: 3145628.76 (U.S. survey feet)

Type of monument: Harrison, 4" disk 'Section Corner'

Depth: six inches below adjacent gravel road surface

Indiana tie card references:

IN02_T19NR1E15_80 IN02_T19NR1E14_72

IN02_T19NR1E22_08 IN02_T19NR1E23_00

CORNER WITNESS DETAIL

SCALE 1" = 30'

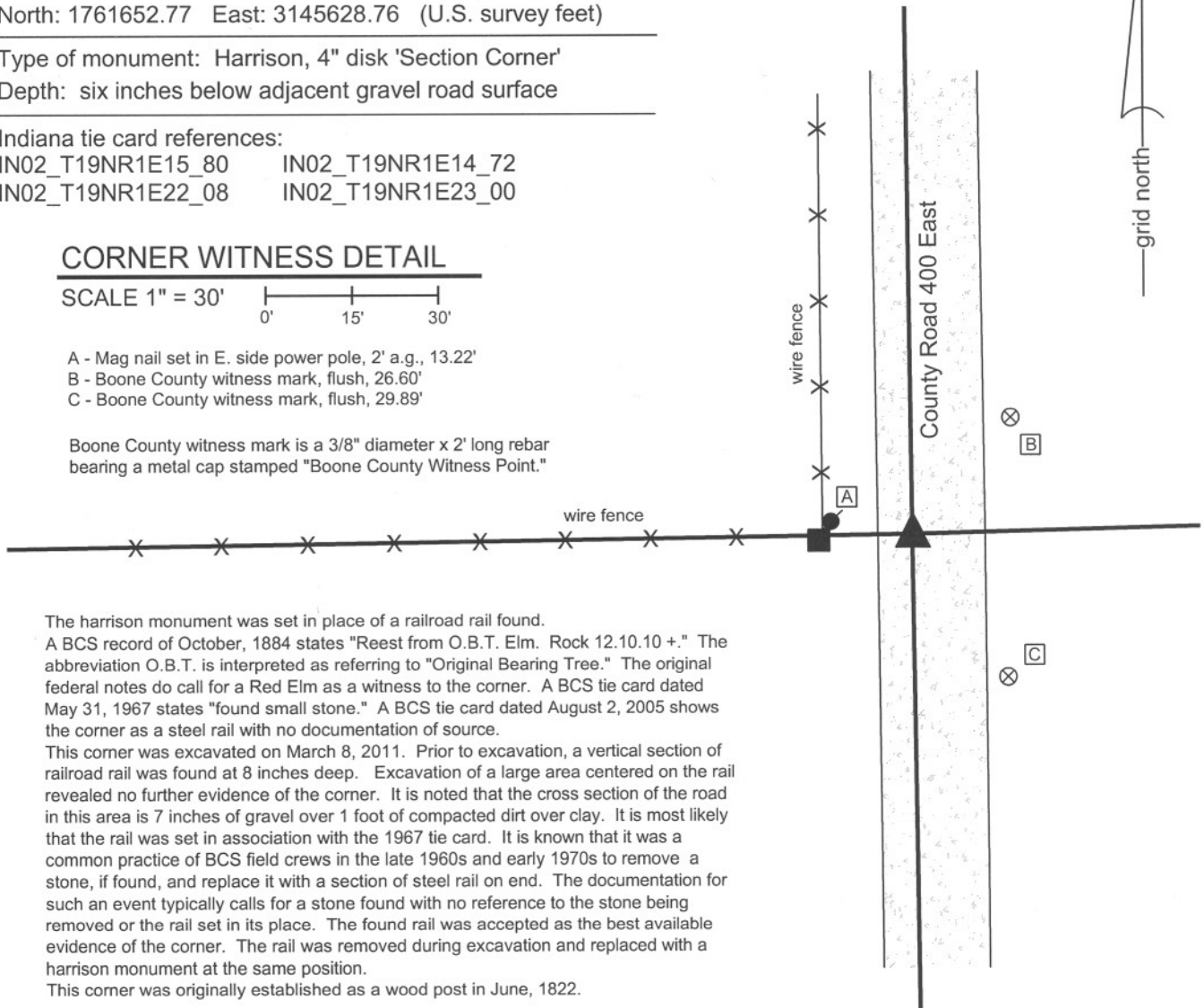


A - Mag nail set in E. side power pole, 2' a.g., 13.22'

B - Boone County witness mark, flush, 26.60'

C - Boone County witness mark, flush, 29.89'

Boone County witness mark is a 3/8" diameter x 2' long rebar bearing a metal cap stamped "Boone County Witness Point."

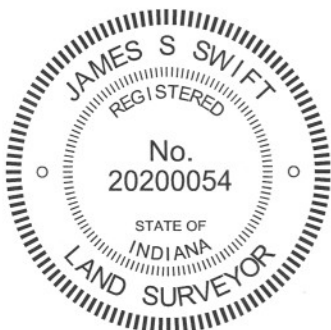


The harrison monument was set in place of a railroad rail found.

A BCS record of October, 1884 states "Reest from O.B.T. Elm. Rock 12.10.10 +." The abbreviation O.B.T. is interpreted as referring to "Original Bearing Tree." The original federal notes do call for a Red Elm as a witness to the corner. A BCS tie card dated May 31, 1967 states "found small stone." A BCS tie card dated August 2, 2005 shows the corner as a steel rail with no documentation of source.

This corner was excavated on March 8, 2011. Prior to excavation, a vertical section of railroad rail was found at 8 inches deep. Excavation of a large area centered on the rail revealed no further evidence of the corner. It is noted that the cross section of the road in this area is 7 inches of gravel over 1 foot of compacted dirt over clay. It is most likely that the rail was set in association with the 1967 tie card. It is known that it was a common practice of BCS field crews in the late 1960s and early 1970s to remove a stone, if found, and replace it with a section of steel rail on end. The documentation for such an event typically calls for a stone found with no reference to the stone being removed or the rail set in its place. The found rail was accepted as the best available evidence of the corner. The rail was removed during excavation and replaced with a harrison monument at the same position.

This corner was originally established as a wood post in June, 1822.



Kenneth E. Hedge
Kenneth E. Hedge, County Surveyor

James S. Swift
James S. Swift, IN LS 20200054
March 1, 2012

Center Township

Section 15 T19N, R1E	Section 14 T19N, R1E
Section 22 T19N, R1E	Section 23 T19N, R1E

SECTION CORNER RECORD

NE 300-450

BOONE COUNTY SURVEYOR'S OFFICE

State Plane grid coordinates NAD83 (2011):

North: 1761708.56 East: 3148248.51 (U.S. survey feet)

Type of monument: Harrison, 4" disk 'Section Corner'

Depth: Flush with adjacent ground

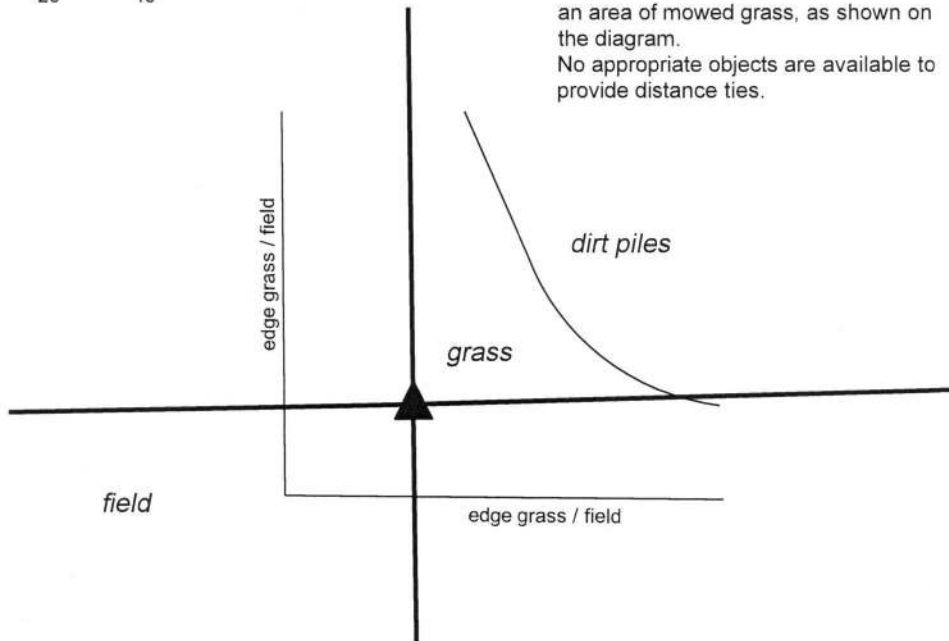
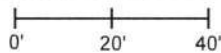
Indiana tie card references:

IN02_T19NR1E14_76 IN02_T19NR1E23_04



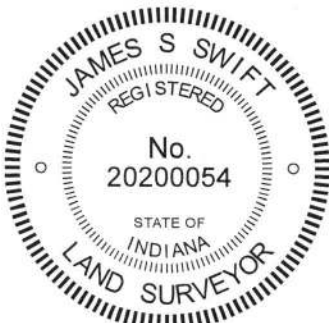
CORNER WITNESS DETAIL

SCALE 1" = 40'



The Harrison monument is located in an area of mowed grass, as shown on the diagram.
No appropriate objects are available to provide distance ties.

The Harrison monument was set in place of a Harrison monument found, adjacent to fragments of a cedar post. A BCS record of October 16, 1912 states, with respect to this corner, "Drove a redbud stake." A BCS tie card dated August 16, 2005 shows the corner as a Harrison monument with no documentation of source, south of a Hackberry tree and in-line with a fence to the north. This corner was excavated on April 26, 2018. Prior to excavation, the Harrison monument shown on the 2005 tie card was found with the top broken off but otherwise evidently undisturbed. The Hackberry tree and fence to the north were not present. Excavation in the vicinity of the Harrison monument revealed remnants of a cedar post adjacent to the found monument. The 2005 Harrison appears to have been set at the south edge of the post. A large stone was also found at the northwest edge of the remnants of the post. The stone appeared to be horizontal and no specific marks were observed on the top of the stone. It is noted that the stone was situated under the roots (now rotten) of the hackberry tree (now removed except for the rotten roots). No evidence of the redbud stake was found. Accepting approximately 1 foot of uncertainty for the position of the corner with respect to the found cedar post and found Harrison monument, the Harrison was held as marking the corner. Though the top of the monument had been broken off, the monument had been set with a substantial amount of concrete and the position of the monument appeared not to be disturbed. The Harrison monument was removed and replaced with a new monument in the same position. This corner was originally established as a wood post in 1821.





Kenneth E. Hedge, County Surveyor


James S. Swift, IN LS 20200054
May 9, 2018

Center Township

Section 14
T19N, R1E


Section 23
T19N, R1E

SECTION CORNER RECORD

NE 300-500

BOONE COUNTY SURVEYOR'S OFFICE

State Plane grid coordinates NAD83 (CORS96):

North: 1761778.18 East: 3150857.57 (U.S. survey feet)

Type of monument: Harrison, 4" disk 'Section Corner'

Depth: One inch below adjacent road surface

Indiana tie card references:

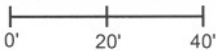
IN02_T19NR1E13_72

IN02_T19NR1E14_80

IN02_T19NR1E24_00

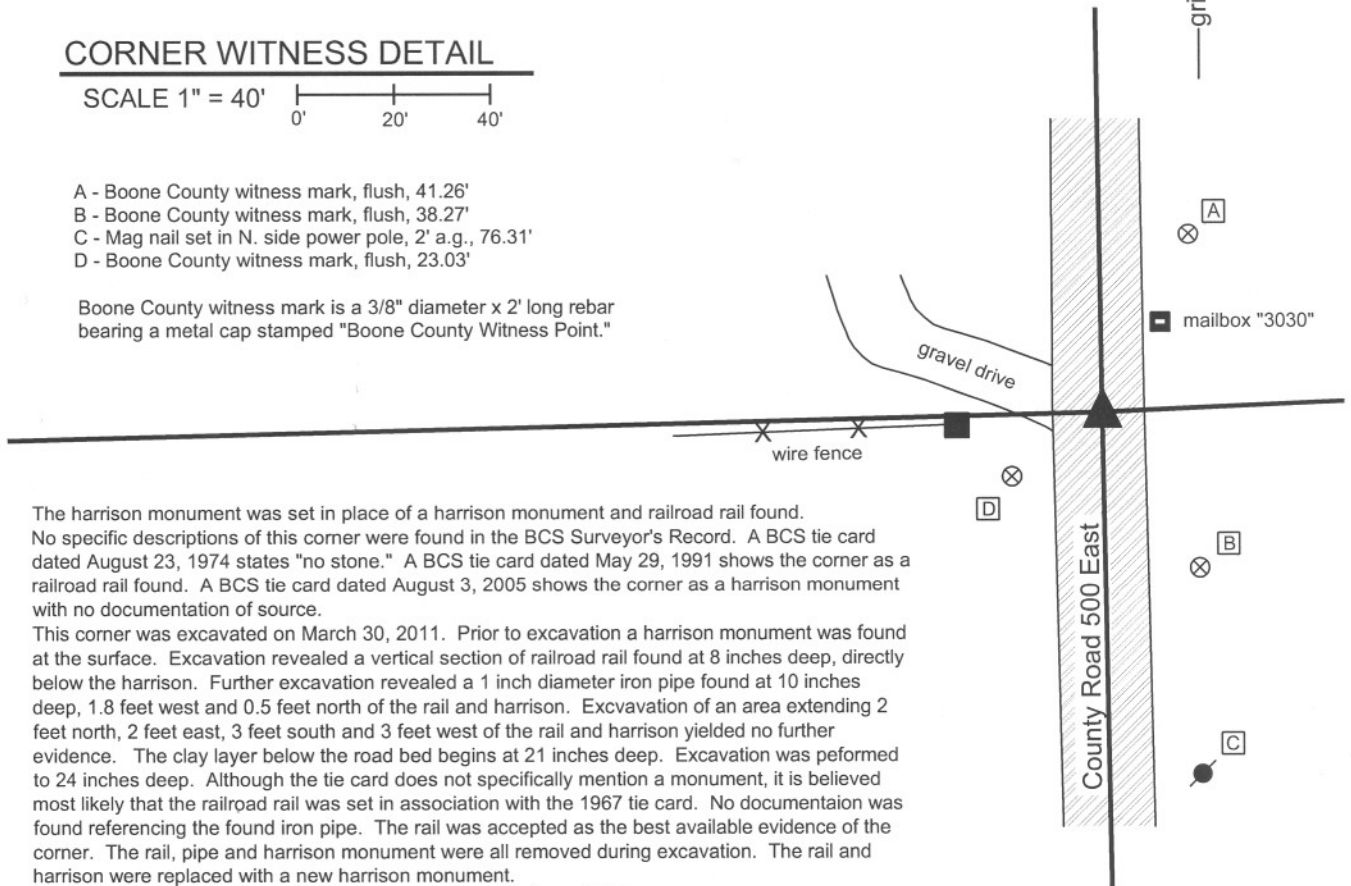
IN02_T19NR1E23_08

CORNER WITNESS DETAIL

SCALE 1" = 40' 

- A - Boone County witness mark, flush, 41.26'
- B - Boone County witness mark, flush, 38.27'
- C - Mag nail set in N. side power pole, 2' a.g., 76.31'
- D - Boone County witness mark, flush, 23.03'

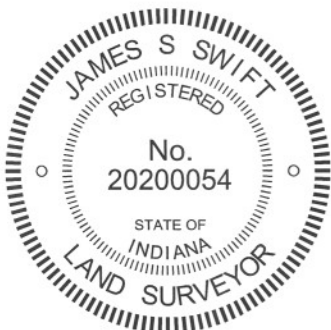
Boone County witness mark is a 3/8" diameter x 2' long rebar bearing a metal cap stamped "Boone County Witness Point."



The harrison monument was set in place of a harrison monument and railroad rail found. No specific descriptions of this corner were found in the BCS Surveyor's Record. A BCS tie card dated August 23, 1974 states "no stone." A BCS tie card dated May 29, 1991 shows the corner as a railroad rail found. A BCS tie card dated August 3, 2005 shows the corner as a harrison monument with no documentation of source.

This corner was excavated on March 30, 2011. Prior to excavation a harrison monument was found at the surface. Excavation revealed a vertical section of railroad rail found at 8 inches deep, directly below the harrison. Further excavation revealed a 1 inch diameter iron pipe found at 10 inches deep, 1.8 feet west and 0.5 feet north of the rail and harrison. Excavation of an area extending 2 feet north, 2 feet east, 3 feet south and 3 feet west of the rail and harrison yielded no further evidence. The clay layer below the road bed begins at 21 inches deep. Excavation was performed to 24 inches deep. Although the tie card does not specifically mention a monument, it is believed most likely that the railroad rail was set in association with the 1967 tie card. No documentation was found referencing the found iron pipe. The rail was accepted as the best available evidence of the corner. The rail, pipe and harrison monument were all removed during excavation. The rail and harrison were replaced with a new harrison monument.

This corner was originally established as a wood post in June, 1822.



Kenneth E. Hedge
 Kenneth E. Hedge, County Surveyor

James S. Swift
 James S. Swift, IN LS 20200054
 March 1, 2012

Center Township

Section 14 T19N, R1E	Section 13 T19N, R1E
Section 23 T19N, R1E	Section 24 T19N, R1E

SECTION CORNER RECORD

NE 350-400

BOONE COUNTY SURVEYOR'S OFFICE

State Plane grid coordinates NAD83 (CORS96):

North: 1764313.20 East: 3145599.57 (U.S. survey feet)

Type of monument: Harrison, 4" disk 'Section Corner'

Depth: six inches below adjacent gravel road surface

Indiana tie card references:

IN02_T19NR1E14_36 IN02_T19NR1E15_44

CORNER WITNESS DETAIL

SCALE 1" = 40'



- A - Boone County witness mark, flush, 39.19'
- B - Boone County witness mark, flush, 43.33'
- C - Mag nail set in E. side power pole, 2' a.g., 24.42'

Boone County witness mark is a 3/8" diameter x 2' long rebar bearing a metal cap stamped "Boone County Witness Point."



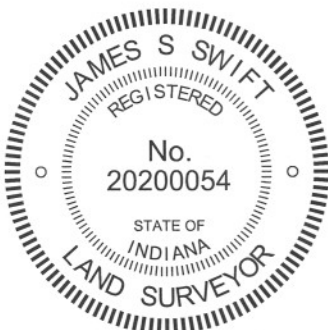
County Road 400 East

County Road 350 North

The harrison monument was set over a stone found.

A BCS record of October 17, 1870 states "Reestablished from one tree. set a rock 12.10 by 6 + and four small ones under it." A BCS tie card dated October, 1975 states "No stone - set rail." A BCS tie card dated August 2, 2005 shows the corner as a harrison monument with no documentation of source.

This corner was excavated on March 3, 2011. Prior to excavation a vertical section of railroad rail was found at 10 inches deep in the gravel road. No harrison monument was found. Excavation revealed a stone found at 24 inches deep. The stone is embedded in the clay layer below the road with the top of the stone at the bottom of the road bed. The stone has a clearly etched "+" on the top. With 8 inches of the top of the stone exposed, it measures 12 inches E-W by 9 inches N-S (though the top portion of the rock is 6 inches E-W). The north edge of the stone is approximately 9 inches tall. The generally stone matches the 1870 record dimensions if the E-W dimension is interpreted as being the top. It has been noted at several corners that irregular shaped rocks may be interpreted as having a variety of measurements. Typically, though not always, the recorded dimensions represent the largest dimensions. Occasionally, the recorded dimensions fit with an obvious part of the stone, such as the top. In any case, the dimensions of the stone are close to the record dimensions and the stone matches the characteristics of other rocks found marking corners, being embedded in the clay layer below the road, situated upright, oriented in cardinal directions and etched with a "+." The stone was held as marking the corner and left in place. The harrison monument was set directly over the etched "+" on the top of the stone. The railroad rail, removed during excavation, had been 1.0 foot east and 1.3 feet north of the stone. This corner was originally established as a wood post in June, 1822.



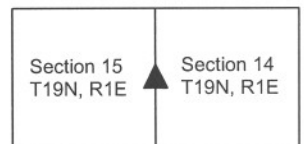
Kenneth E. Hedge

 Kenneth E. Hedge, County Surveyor

James S. Swift

 James S. Swift, IN LS 20200054
 March 1, 2012

Center Township



PHOTOGRAPHIC DOCUMENTATION

Date of photography: March 3, 2011

View of the stone as first exposed.



View of the stone from above and south.



View from the east, looking across the stone (in shadows) and west along County Road 350 North.



View of the stone from above and north.



Same view as above, close-up.



For details and documentation, refer to related sheet "Section Corner Record."

SECTION CORNER RECORD

NE 350-500

BOONE COUNTY SURVEYOR'S OFFICE

State Plane grid coordinates NAD83 (NSRS 2007):

North: 1764415.40 East: 3150818.83 (U.S. survey feet)

Type of monument: Harrison, 4" disk 'Section Corner'

Depth: One inch below adjacent road surface

Indiana tie card references:

IN02_T19NR1E13_36 IN02_T19NR1E14_44

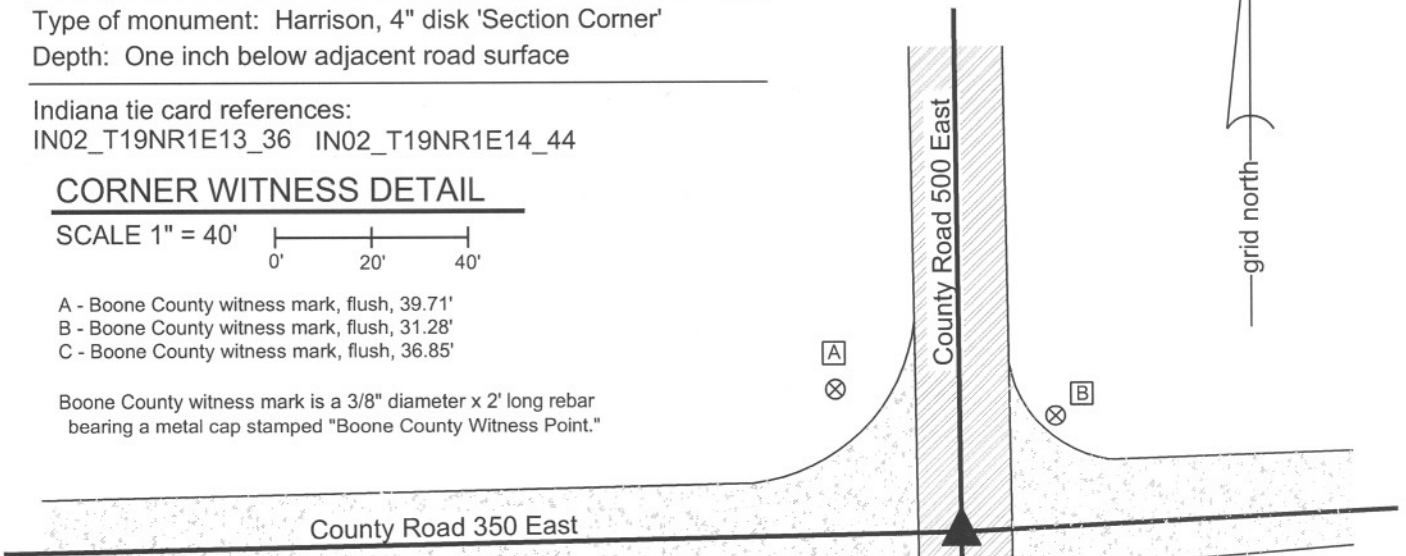
CORNER WITNESS DETAIL

SCALE 1" = 40'



- A - Boone County witness mark, flush, 39.71'
- B - Boone County witness mark, flush, 31.28'
- C - Boone County witness mark, flush, 36.85'

Boone County witness mark is a 3/8" diameter x 2' long rebar bearing a metal cap stamped "Boone County Witness Point."

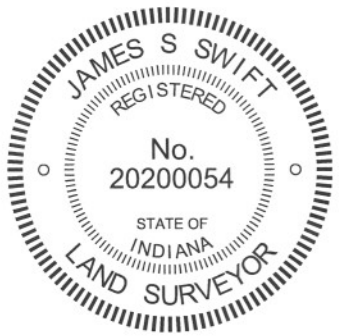


The harrison monument was set in place of a harrow tooth found. A BCS record of April 27, 1898 states "Reestablished; drove harrow tooth, from which a rock, S 45° E, 45 lks; also a rock N 45° West, 45 links, each with hole in top and a small rock on top of each." A BCS tie card dated May 23, 1968 states "no stone, set 30" rail." A BCS tie card dated May 29, 1991 shows the corner as a rail found. A BCS tie card dated August 3, 2005 shows the corner as a harrison monument with no documentation of source.

This corner was excavated on September 21, 2011. Prior to excavation a harrison monument was found slightly above the surface of the road. The harrison was slightly askew and the lid was missing. Excavation revealed a railroad rail found at 9.5" deep, directly below the harrison. The railroad rail was removed and the area was scanned with a magnetic locator. A distinct reading was recorded south and west of the rail and excavation of a small hole at this point revealed a harrow tooth found at 19 inches deep. The harrow tooth is steel, 10 1/2 inches long with square shaft that is 1 inch on a side at the top, tapering to a dull point at the bottom. The harrow tooth was vertical, as found, with the large end up and the small end down. The harrow tooth was removed. The hole left where it had been was filled with concrete at the bottom of the column of concrete in which the harrison was placed. The harrison monument was set directly above the position of the harrow tooth as found. The harrow tooth is on display in the Boone County Surveyor's Office. As of publication of this document, the 1898 record of the harrow tooth represents the oldest known record of a metal monument marking a section corner in Boone County.

The found harrison monument and railroad rail, both removed during excavation had been 2.2 feet north and 1.1 feet east of the harrow tooth. The 1968 reference to "no stone, set 30" rail" is interpreted as evidence that the field crew on that date was not aware of the contents of the BCS Surveyor's Record. Rather than disregarding the harrow tooth as evidence, it is considered most likely that the field crew which set the rail did not know that the monument of record was not a stone, but a harrow tooth. In any case, the harrow tooth matches the 1898 record and was accepted as the oldest and best available evidence of the corner.

This corner was originally established as a wood post in June, 1822.

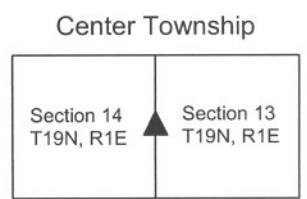


Kenneth E. Hedge

 Kenneth E. Hedge, County Surveyor

James S. Swift

 James S. Swift, IN LS 20200054
 March 1, 2012



PHOTOGRAPHIC DOCUMENTATION

Date of photography: September 21, 2011

The top of the harrow tooth. The monument was located with a metal detector after the railroad rail was removed, hence the small hole.



The harrow tooth removed from the hole and lying horizontally, situated next to the hole from which it was removed.



For details and documentation, refer to related sheet "Section Corner Record."

SECTION CORNER RECORD

BOONE COUNTY SURVEYOR'S OFFICE

NE 400-400

State Plane grid coordinates NAD83 (CORS96):

North: 1766962.85 East: 3145574.53 (U.S. survey feet)

Type of monument: Harrison, 4" disk 'Section Corner'

Depth: six inches below adjacent gravel road surface

Indiana tie card references:

IN02_T19NR1E10_80

IN02_T19NR1E11_72

IN02_T19NR1E15_08

IN02_T19NR1E14_00

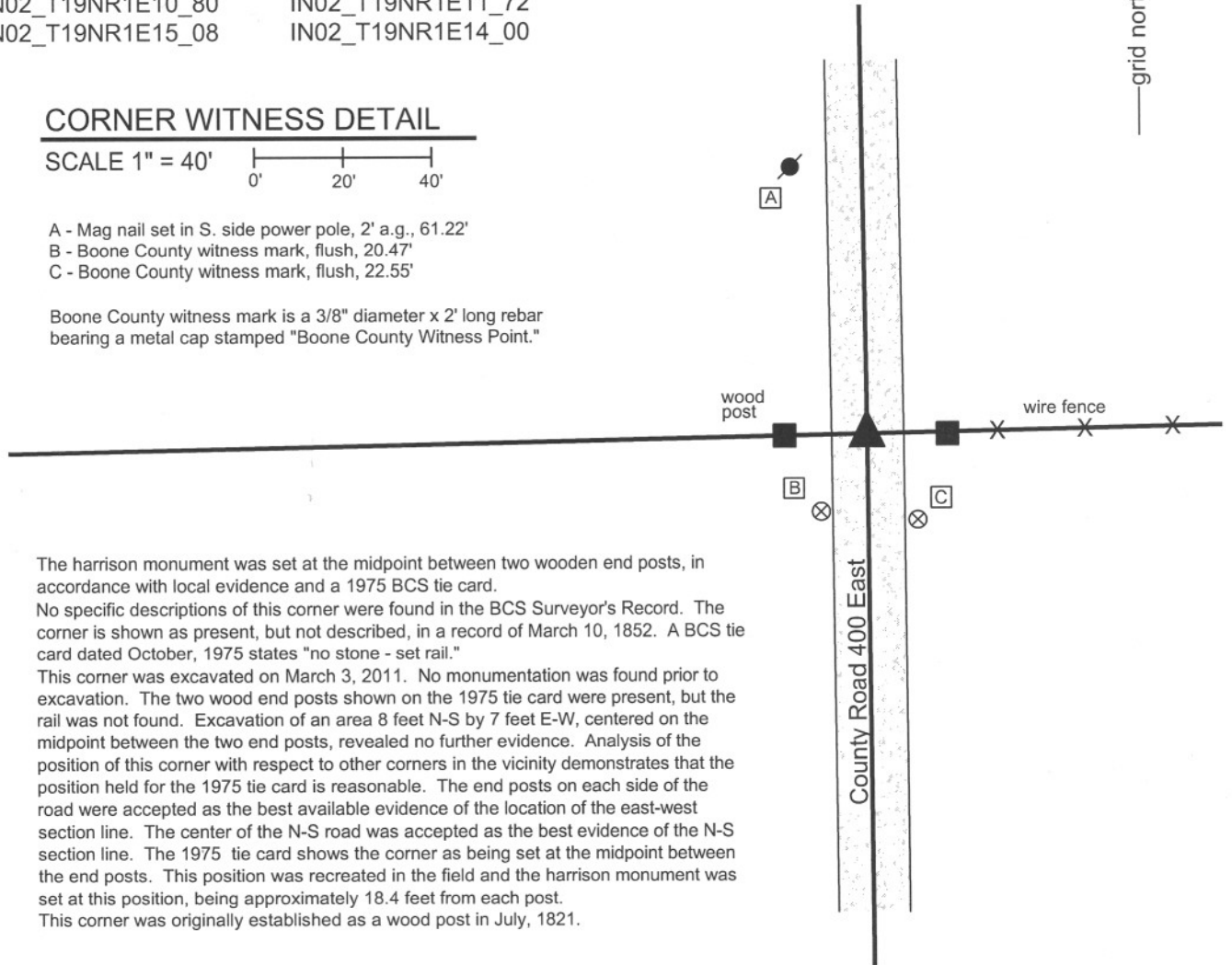
CORNER WITNESS DETAIL

SCALE 1" = 40'

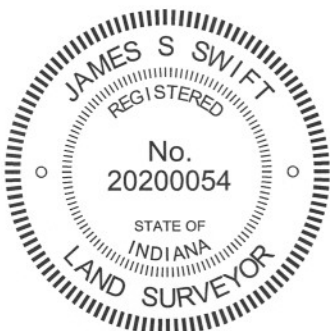


- A - Mag nail set in S. side power pole, 2' a.g., 61.22'
- B - Boone County witness mark, flush, 20.47'
- C - Boone County witness mark, flush, 22.55'

Boone County witness mark is a 3/8" diameter x 2' long rebar bearing a metal cap stamped "Boone County Witness Point."



The Harrison monument was set at the midpoint between two wooden end posts, in accordance with local evidence and a 1975 BCS tie card. No specific descriptions of this corner were found in the BCS Surveyor's Record. The corner is shown as present, but not described, in a record of March 10, 1852. A BCS tie card dated October, 1975 states "no stone - set rail." This corner was excavated on March 3, 2011. No monumentation was found prior to excavation. The two wood end posts shown on the 1975 tie card were present, but the rail was not found. Excavation of an area 8 feet N-S by 7 feet E-W, centered on the midpoint between the two end posts, revealed no further evidence. Analysis of the position of this corner with respect to other corners in the vicinity demonstrates that the position held for the 1975 tie card is reasonable. The end posts on each side of the road were accepted as the best available evidence of the location of the east-west section line. The center of the N-S road was accepted as the best evidence of the N-S section line. The 1975 tie card shows the corner as being set at the midpoint between the end posts. This position was recreated in the field and the Harrison monument was set at this position, being approximately 18.4 feet from each post. This corner was originally established as a wood post in July, 1821.



Kenneth E. Hedge
Kenneth E. Hedge, County Surveyor

James S. Swift
James S. Swift, IN LS 20200054
March 1, 2012

Clinton Twp	Section 10 T19N, R1E	Section 11 T19N, R1E
Center Twp	Section 15 T19N, R1E	Section 14 T19N, R1E

SECTION CORNER RECORD

BOONE COUNTY SURVEYOR'S OFFICE

NE 400-450

State Plane grid coordinates NAD83 (2011):
 North: 1767008.07 East: 3148178.68 (U.S. survey feet)

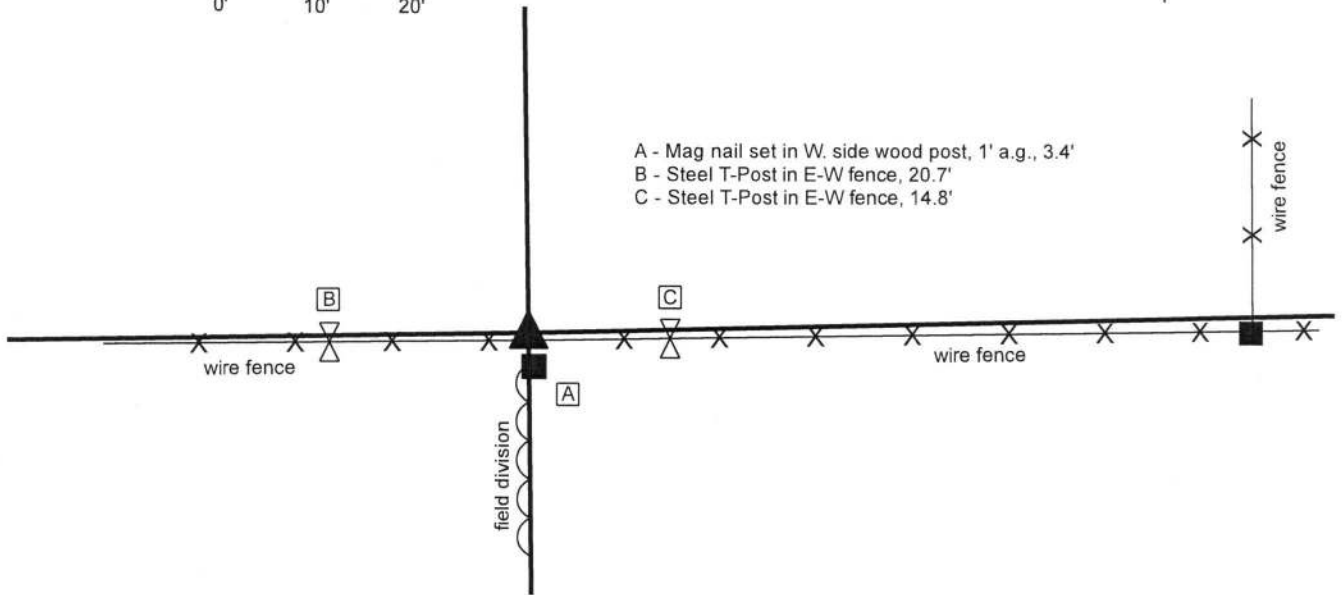
Type of monument: Harrison, 4" disk 'Section Corner'
 Depth: Three inches above adjacent ground

Indiana tie card references:
 IN02_T19NR1E11_76 IN02_T19NR1E14_04



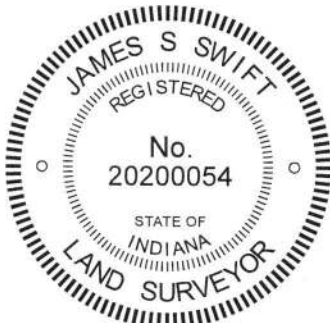
CORNER WITNESS DETAIL

SCALE 1" = 20'



A - Mag nail set in W. side wood post, 1' a.g., 3.4'
 B - Steel T-Post in E-W fence, 20.7'
 C - Steel T-Post in E-W fence, 14.8'

The Harrison monument was set in place of a stone found.
 A BCS record of June 26-27, 1865 states, with respect to this corner, "Reestablished by measurement. Set a rock 14.9 by 6 marked 1/4. And mark on top. Brick bat under it."
 A BCS tie card dated September 1, 2005 shows the corner as a wood post with a PK nail in the N.E. corner.
 This corner was excavated on April 19, 2018. Prior to excavation, the wood post shown as the corner on the 2005 tie card was found leaning significantly toward the east. The post was west of the field division to the south. Another wood post was found south of the primary east-west fence, in-line with the field division to the south. Excavation in the vicinity of the two posts revealed the stone described in the 1865 record at 3 inches deep, slightly north of the standing east-west fence and generally in line with the field division to the south. The stone measured 9 inches N-S by 6 inches E-W by 17 inches tall. An etched mark of "1/4" was clearly visible on the south edge of the stone. As found, the stone was vertical and appeared to be undisturbed, with a distinct high point on the top of the stone. The stone was removed and a piece of brick was found directly below the stone at 19 inches deep. With the dimensions of the stone generally matching the record and the presence of the brick bat below the stone, the stone was accepted as being the same monument described in the 1865 record and believed to be situated in the same position as it was set in 1865. The piece of brick was left in place. 3 rebars of 1/2 inch diameter were driven into the ground at angles around the brick and a Harrison monument was constructed above the piece of brick. The monument is 0.4 foot north and 2.5 feet east of the coordinate reported for the corner, shown as a wood post, on the 2005 tie card.
 This corner was originally established as a wood post in 1821.



Kenneth E. Hedge
 Kenneth E. Hedge, County Surveyor

James S. Swift
 James S. Swift, IN LS 20200054
 May 9, 2018

Clinton
 Township

Section 11
 T19N, R1E

Center
 Township

Section 14
 T19N, R1E

SECTION CORNER RECORD

BOONE COUNTY SURVEYOR'S OFFICE

NE 400-500

State Plane grid coordinates NAD83 (CORS96):
 North: 1767069.82 East: 1767069.82 (U.S. survey feet)

Type of monument: Harrison, 4" disk 'Section Corner'
 Depth: One inch below adjacent road surface

Indiana tie card references:
 IN02_T19NR1E11_80 IN02_T19NR1E12_72
 IN02_T19NR1E14_08 IN02_T19NR1E13_00

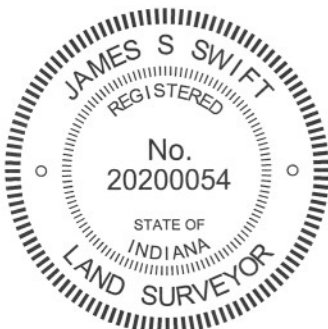
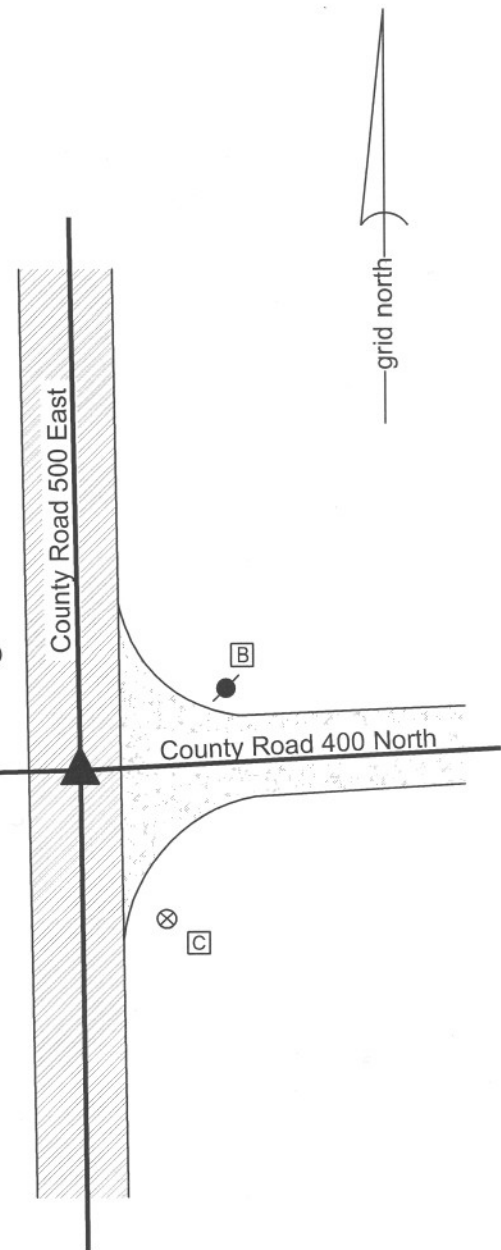
CORNER WITNESS DETAIL

SCALE 1" = 40'

- A - Boone County witness mark, flush, 30.34'
- B - Mag nail set in W. side power pole, 2' a.g. 33.24'
- C - Boone County witness mark, flush, 35.70'

Boone County witness mark is a 3/8" diameter x 2' long rebar bearing a metal cap stamped "Boone County Witness Point."

The harrison monument was set over a stone found.
 A BCS record of June 26-27, 1865 states Reestablished from Oak B.T. Set two rocks one 5.3.2 in (two notches in sharp corner). Top rock 13.12.6 in. + on side."
 A BCS tie card dated August 15, 1868 states "no stone." A BCS tie card dated May 29, 1991 shows the corner as a rail found. A BCS tie card dated August 3, 2005 shows the corner as a harrison monument with no documentation of source.
 This corner was excavated on April 6, 2011. Prior to excavation a harrison monument was found at the surface. Excavation revealed a railroad rail found at 5 inches deep, below the harrison. It is most likely that the rail was set in association with the creation of the 1968 tie card. Further excavation revealed the stone described in the 1865 record at 22 inches deep. The stone measures 12 inches E-W by 6 inches N-S by 13 inches tall. The rock has a rough surface. A vague chiseled + was evident on the N. side. The stone was left in place and the harrison monument was set over the top of the stone, in line with the chiseled +. The harrison monument and railroad rail, both removed during excavation, had been 0.9 foot north and 1.5 feet west of the stone.
 This corner was originally established as a wood post in June, 1822.



Kenneth E. Hedge
 Kenneth E. Hedge, County Surveyor

James S. Swift
 James S. Swift, IN LS 20200054
 March 1, 2012

Clinton Twp	Section 11 T19N, R1E	Section 12 T19N, R1E
Center Twp	Section 14 T19N, R1E	Section 13 T19N, R1E

PHOTOGRAPHIC DOCUMENTATION

Date of photography: April 6, 2011

View from the west looking across the stone (in shadows) and east along County Road 400 North.



View of the stone as first exposed.



The stone from the north.



The stone from the south.



For details and documentation, refer to related sheet "Section Corner Record."