

# SECTION CORNER RECORD

SE 200-1000

## BOONE COUNTY SURVEYOR'S OFFICE

State Plane grid coordinates NAD83 (NSRS 2007):

North: 1736356.30 East: 3177959.20 (U.S. survey feet)

Type of monument: Harrison, 4" disk 'Section Corner'

Depth: One inch below adjacent road surface

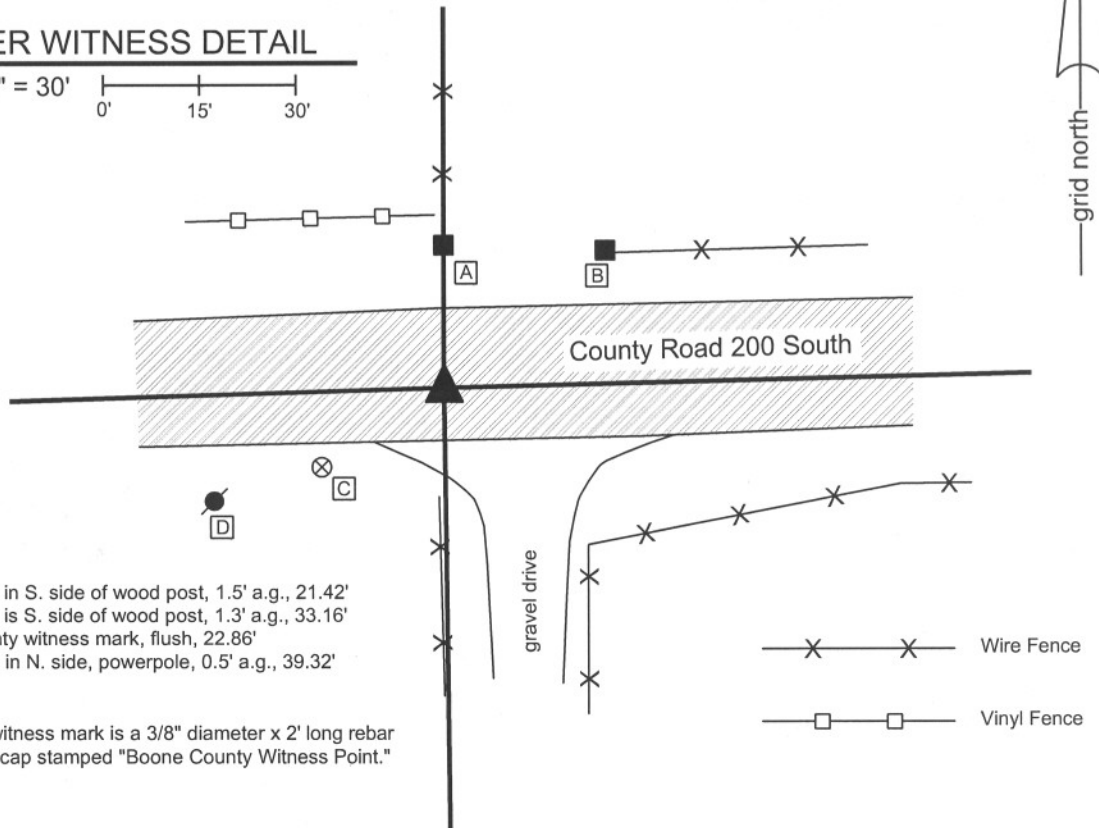
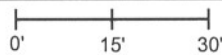
Indiana tie card references:

IN02\_T18NR2E10\_80 IN02\_T18NR2E11\_72

IN02\_T18NR2E14\_00 IN02\_T18NR2E15\_08

### CORNER WITNESS DETAIL

SCALE 1" = 30'



- A - Mag nail set in S. side of wood post, 1.5' a.g., 21.42'
- B - Mag nail set in S. side of wood post, 1.3' a.g., 33.16'
- C - Boone County witness mark, flush, 22.86'
- D - P.K. nail fnd in N. side, powerpole, 0.5' a.g., 39.32'

Boone County witness mark is a 3/8" diameter x 2' long rebar bearing a metal cap stamped "Boone County Witness Point."

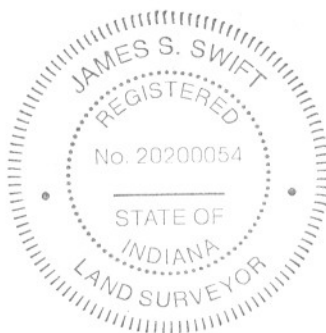
The harrison monument was set in the position of a railroad rail found.

A BCS record of April 20, 1883 states "Reestab. on line with e & f Sec 11, and D Sec 15 & q Sec. 11. Stone 20x16x16 marked + on top."

A BCS tie card of July 2, 1967 states "stone found." Prior to excavation the visible monument was a 5/8 inch rebar 6 inches deep in a hole in the asphalt. This rebar fit generally well with the 1967 ties. This corner was excavated on April 24, 2008. Excavation yielded a railroad rail at 12 inches.

The rebar was against the south side of the rail. Both monuments were removed. Further excavation yielded no more monuments. The stone was not found and it is considered most likely that the stone was removed and the rail installed in 1967. Although the no specific documentation was found for the rail, it is known that removal of the stone and installation of a railroad rail was a common practice of field crews from this office in that time frame.

The rail was replaced with a harrison monument. This corner was originally established as a wood post in July, 1821.



*Kenneth E. Hedge*  
 Kenneth E. Hedge, County Surveyor

*James S. Swift*  
 James S. Swift, IN LS 20200054

March 11, 2009

Union Township

Section 10 T18N, R2E	Section 11 T18N, R2E
Section 15 T18N, R2E	Section 14 T18N, R2E

# SECTION CORNER RECORD

# SE 200-1050

## BOONE COUNTY SURVEYOR'S OFFICE

State Plane grid coordinates NAD83 (NSRS 2007):  
North: 1736421.12 East: 3180659.91 (U.S. survey feet)

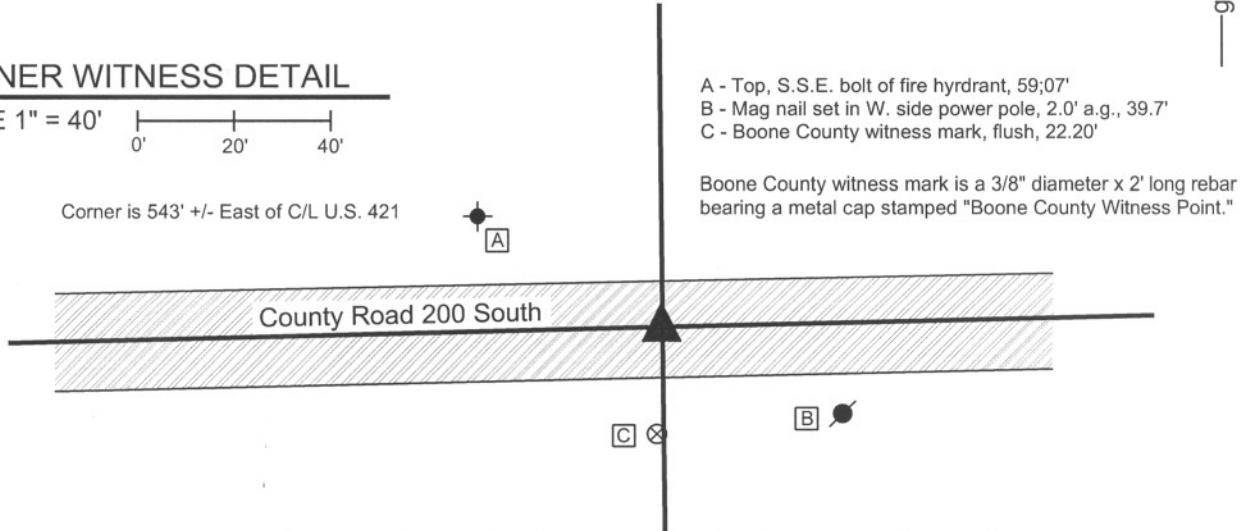
Type of monument: Harrison, 4" disk 'Section Corner'  
Depth: One inch below adjacent road surface

Indiana tie card references:  
IN02\_T18NR2E11\_76  
IN02\_T18NR2E14\_04



### CORNER WITNESS DETAIL

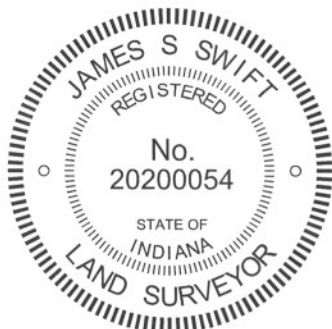
SCALE 1" = 40'  
0' 20' 40'



The harrison monument was set at the midpoint between the stones found at the northeast and northwest corners of section 14. This corner is not specifically mentioned in the old BCS Surveyor's Record beyond the original establishment of the corner by the federal government, in the notes for which the corner is shown as being set at the midpoint of the line between sections 11 and 14. A BCS record of 1854 shows the northeast corner of the northwest quarter of the northeast quarter of section 14 as being established on line and at one quarter of the distance from the northeast to the northwest corner of the section, directly implying that the north line of section 14 is straight and that the north quarter corner would be established at the midpoint. No evidence of occupation was found in the vicinity of the corner, nor is it believed that there has been such evidence for a long time, if ever, due to the presence of Michigan Road (U.S. 421) immediately to the west of the corner. A BCS tie card dated June 5, 1991 shows the corner as a railroad spike. It is believed that this is the same monument as that found 32.0 feet west and 7.3 feet north of the midpoint. The origin of this monument is not known. A railroad spike was also found along the straight line connecting the northeast and northwest corners of section 14 at a point 107.75 feet west of the midpoint.

Although evidence of evidence of occupation is not visible in the immediate vicinity of the corner, such evidence does exist in relevant remote locations. Fences to the north and south of County Road 200 East 1/4 mile east of the corner fit well with a position for that corner as being established on line and halfway between the stone at the northeast corner of section 14 and the calculated midpoint of the north line of section 14, in agreement with the 1854 record. Also, a line connecting the calculated midpoint of the north line of section 14 and the stone marking the south quarter corner of section 14 fits well with the fence marking evidence of possession along the east line of the southwest quarter of section 14. The post at the historically occupied and accepted center of section 14 falls approximately 2.5 feet west of this straight line. It is also noted that County Road 200 North is quite straight and that the approximate center of the road does not vary from the mile long section line. The above evidence is cited in support of holding the corner at the calculated midpoint of the north line of section 14. No evidence was found in support of holding the railroad spike shown on the 1991 tie card, other than the fact that it is shown on the card. It is considered that the preponderance of evidence clearly supports the midpoint as a more reasonable position for the corner than the railroad spike to the north and west.

No specific evidence of the corner was found in an area of excavation 6 feet E-W by 4 feet N-S, centered on the calculated midpoint of the north line of section 14. This is not considered surprising, given the lack of specific mention of the corner in the old BCS Surveyor's Record, the lack of evidence of occupation and the historical lack of occupation patterns due to the proximity of the old Michigan Road. The corner was established at the midpoint as mentioned above and a harrison monument was set at this location.



*Kenneth E. Hedge*  
Kenneth E. Hedge, County Surveyor

*James S. Swift*  
James S. Swift, IN LS 20200054  
July 25, 2011

Union Township

Section 11  
T18N, R2E



Section 14  
T18N, R2E

# SECTION CORNER RECORD

SE 200-1100

## BOONE COUNTY SURVEYOR'S OFFICE

State Plane grid coordinates NAD83 (NSRS 2007):  
North: 1736486.01 East: 3183360.60 (U.S. survey feet)

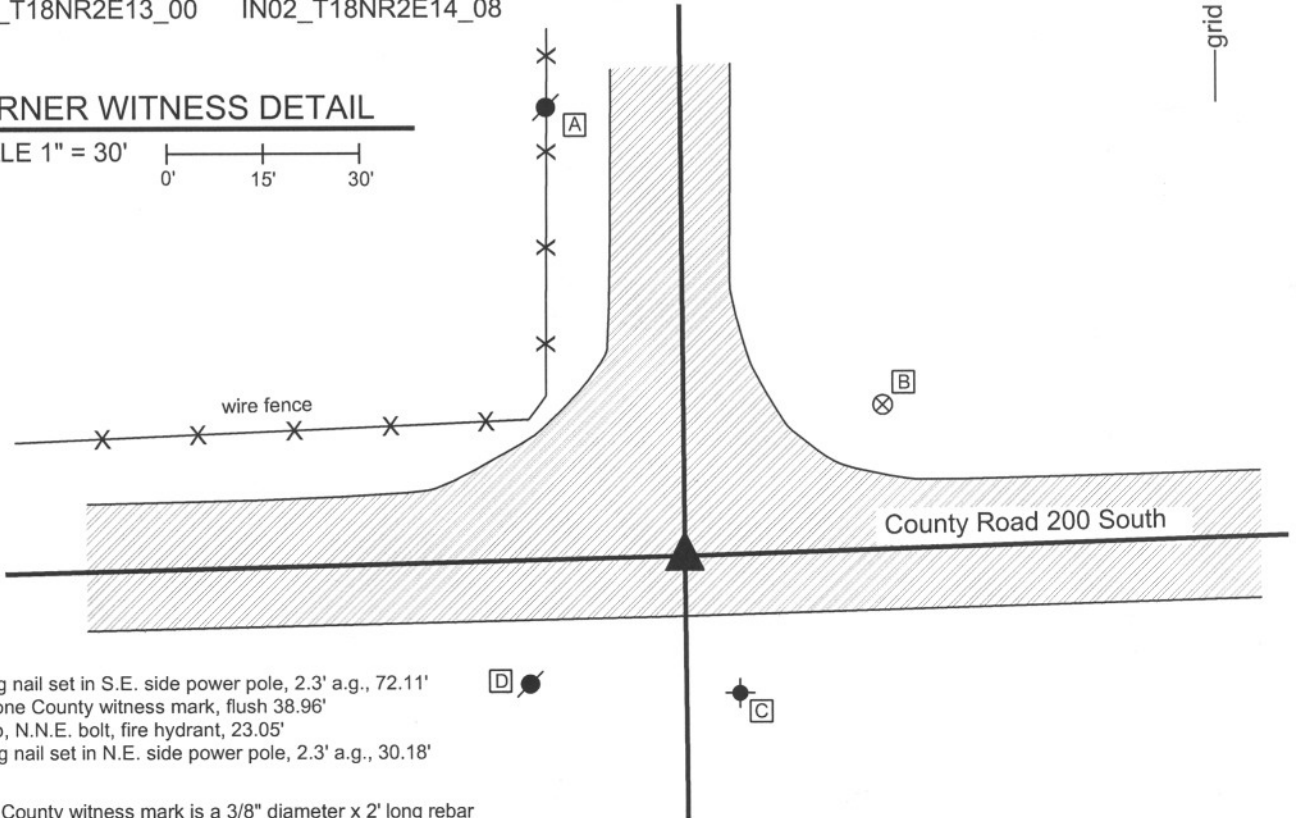
Type of monument: Harrison, 4" disk 'Section Corner'  
Depth: One inch below adjacent road surface

Indiana tie card references:  
IN02\_T18NR2E11\_80 IN02\_T18NR2E12\_72  
IN02\_T18NR2E13\_00 IN02\_T18NR2E14\_08



### CORNER WITNESS DETAIL

SCALE 1" = 30'  
0' 15' 30'



- A - Mag nail set in S.E. side power pole, 2.3' a.g., 72.11'
- B - Boone County witness mark, flush 38.96'
- C - Top, N.N.E. bolt, fire hydrant, 23.05'
- D - Mag nail set in N.E. side power pole, 2.3' a.g., 30.18'

Boone County witness mark is a 3/8" diameter x 2' long rebar bearing a metal cap stamped "Boone County Witness Point."

The harrison monument was set in place of a railroad rail found.  
 A BCS record of January 20, 1874 states "Re-established after sighting the lines intersecting here. Set a rock 17.13.10 +." A BCS tie card dated July 31, 1967 states "found stone." A BCS tie card dated May 31, 1991 shows the corner as being a 3/4 inch tie rod found.  
 This corner was excavated on May 30, 2008. Prior to excavation a railroad rail was visible approximately 4 inches deep in a hole in the asphalt. Excavation centered on the railroad rail yielded an iron pipe (presumably the 3/4 inch tie rod called for the 1991 tie card) situated against the rail on the east side. Further excavation yielded no monuments. Though no specific documentation was found indicating the source of the rail, It is reasonable to conclude that the stone was removed and the rail installed in 1967, as was a common practice at that time. The harrison monument was set in the place of the now removed railroad rail.  
 This corner was originally established as a wood post in July, 1821.



*Kenneth E. Hedge*  
Kenneth E. Hedge, County Surveyor

*James S. Swift*  
James S. Swift, IN LS 20200054

March 11, 2009

Union Township

Section 11 T18N, R2E	Section 12 T18N, R2E
Section 14 T18N, R2E	Section 13 T18N, R2E

# SECTION CORNER RECORD

# SE 250-1000

## BOONE COUNTY SURVEYOR'S OFFICE

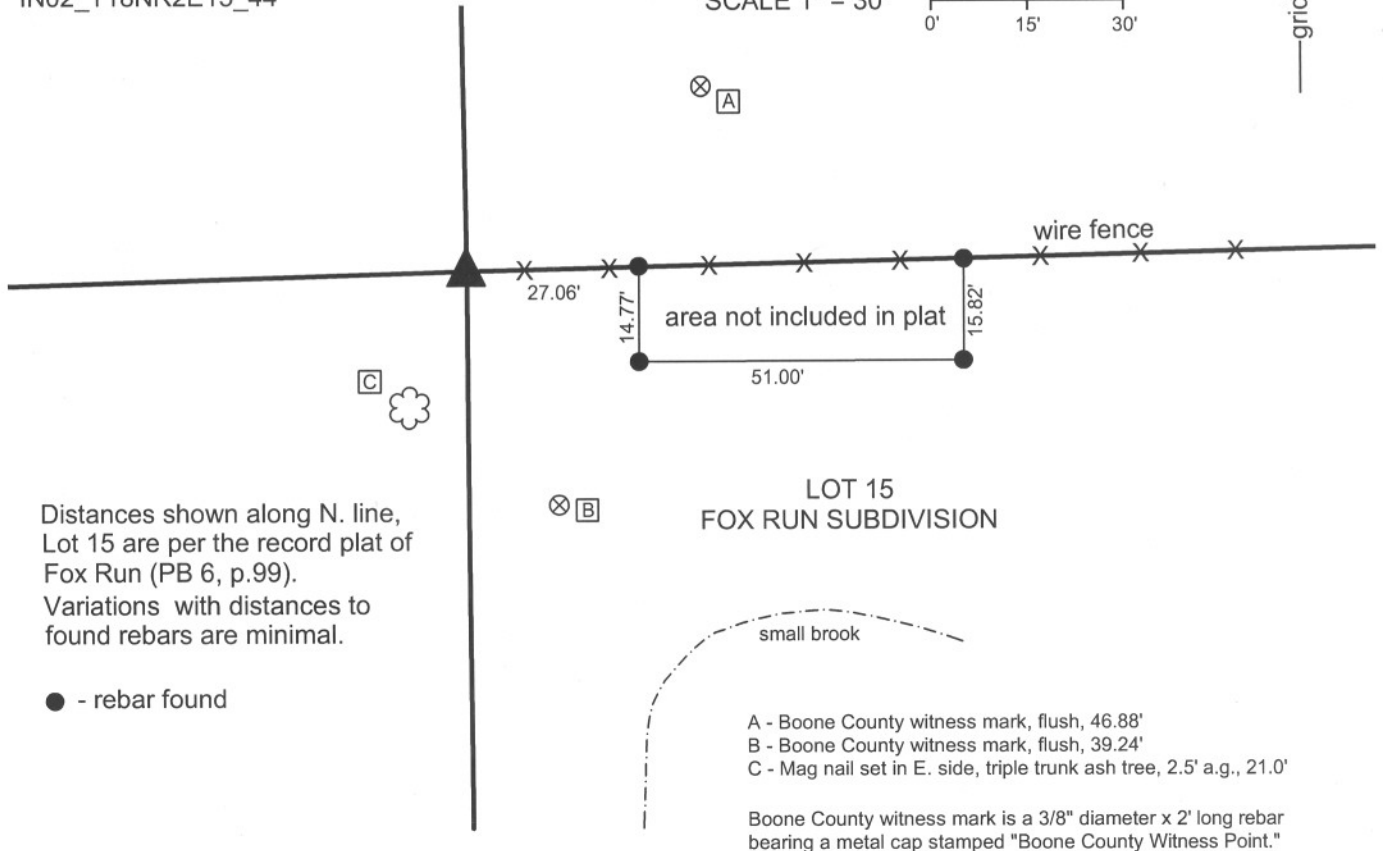
State Plane grid coordinates NAD83 (NSRS 2007):  
North: 1733720.27 East: 3178000.80 (U.S. survey feet)

Type of monument: Harrison, 4" disk 'Section Corner'  
Depth: Four inches above adjoining ground.

Indiana tie card references:  
IN02\_T18NR2E14\_36  
IN02\_T18NR2E15\_44

### CORNER WITNESS DETAIL

SCALE 1" = 30'  
0' 15' 30'



Distances shown along N. line, Lot 15 are per the record plat of Fox Run (PB 6, p.99). Variations with distances to found rebars are minimal.

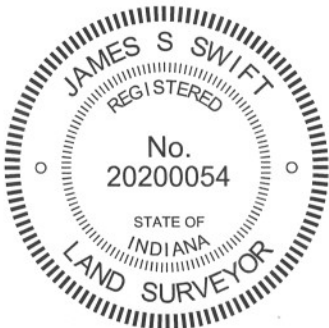
● - rebar found

LOT 15  
FOX RUN SUBDIVISION

- A - Boone County witness mark, flush, 46.88'
- B - Boone County witness mark, flush, 39.24'
- C - Mag nail set in E. side, triple trunk ash tree, 2.5' a.g., 21.0'

Boone County witness mark is a 3/8" diameter x 2' long rebar bearing a metal cap stamped "Boone County Witness Point."

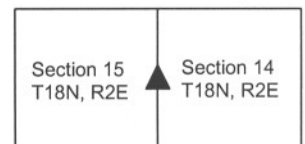
The harrison monument was set over a stone found and in place of a rebar found. A BCS record of April 20, 1883 states "Re Estab. from B.T. Stone 18x12x18 marked +." No recent BCS ties cards were found referencing this corner. This corner was excavated on May 20, 2009. Prior to excavation a 5/8 inch rebar with a metal cap stamped "Carl Anderson Prof Eng" was found protruding from a square concrete monument at the south edge of a wood corner post. Excavation revealed the record stone found directly below the rebar and concrete monument. The concrete monument was situated on top of the stone. The monument was removed and a distinct etched "+" is visible on the top of the stone. The top of the rebar had been very slightly (1 1/2 inch) northeast of the etched "+." A vertical piece of 12 inch diameter HDPE smooth core storm pipe was set over the top of the stone, the top of the stone was encased in concrete and the harrison monument was set in the concrete protruding from the top of the section of pipe. The harrison monument was set at the horizontal position of the rebar, directly above the stone. The wood corner post was left in place. This corner was originally established as a wood post in July, 1821.



*Kenneth E. Hedge*  
Kenneth E. Hedge, County Surveyor

*James S. Swift*  
James S. Swift, IN LS 20200054  
July 14, 2010, Revised January 15, 2013

Union Township





PHOTOGRAPHIC DOCUMENTATION

Date of photography: May 19-20, 2009

The post and rebar/concrete monument prior to excavation.



The stone exposed under the concrete monument.



The stone from above and south.



The post and stone from above.



For details and documentation, refer to related sheet "Section Corner Record."

# SECTION CORNER RECORD

# SE 250-1100

## BOONE COUNTY SURVEYOR'S OFFICE

State Plane grid coordinates NAD83 (2011):

North: 1733847.49 East: 3183384.58 (U.S. survey feet)

Type of monument: 5/8 inch rebar with metal cap "Boone County Surveyor

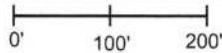
Depth: Four inches above adjacent ground surface

Indiana tie card references:

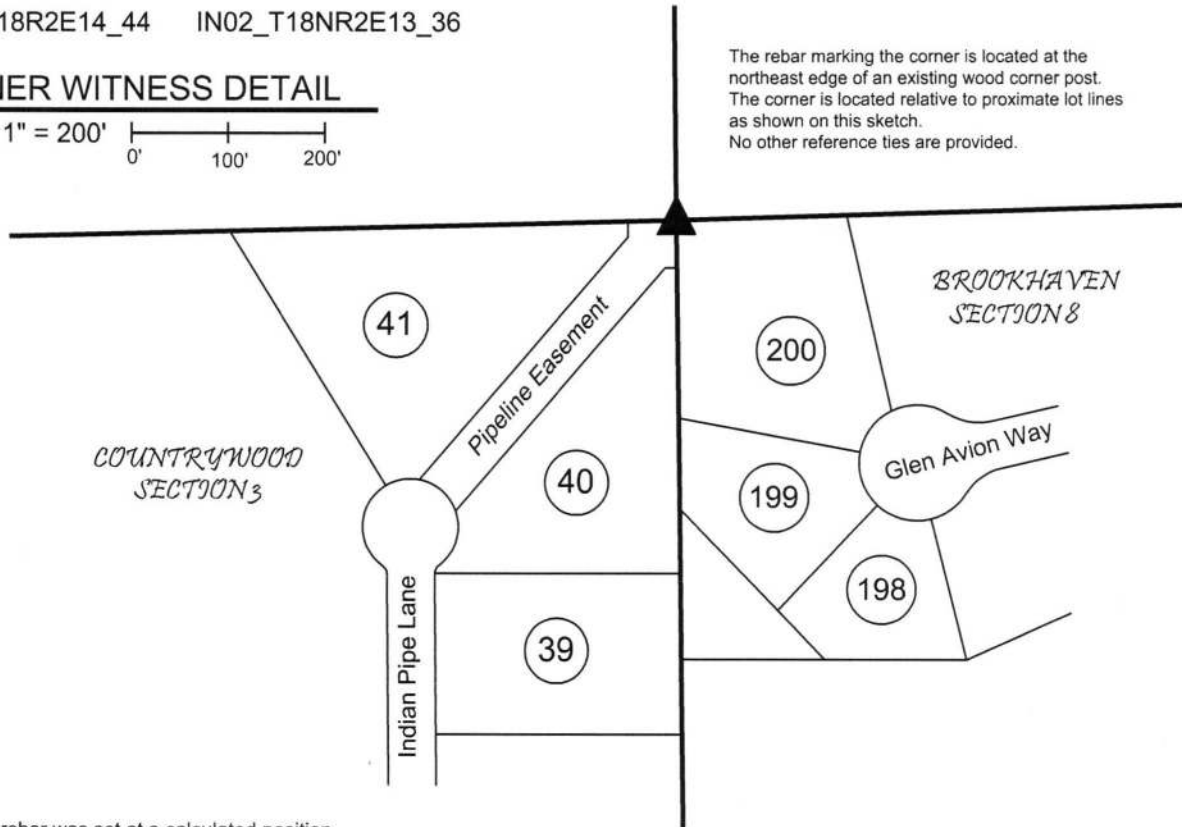
IN02\_T18R2E14\_44 IN02\_T18NR2E13\_36

### CORNER WITNESS DETAIL

SCALE 1" = 200'



The rebar marking the corner is located at the northeast edge of an existing wood corner post. The corner is located relative to proximate lot lines as shown on this sketch. No other reference ties are provided.

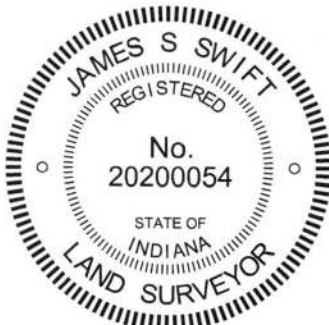


The capped rebar was set at a calculated position.

A BCS record of January 20, 1874 states, with respect to this corner, "Reestablished from stump of Beech and find an old. Set Rock 20.20.10+." (Note, the record is not clear as to exactly what "old" was found.)

No recent BCS tie cards were found referencing this corner.

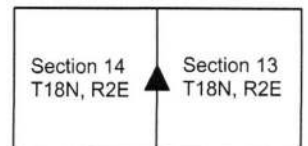
Several stones and a wood post were found in the vicinity of this corner. None of the stones matched the record description from 1874 nor did any of the found stones bear the characteristics associated with purposely set cornerstones. The presence of a pipeline, as evidenced by the pipeline easement in the Countrywood Addition as well as "pipeline" markers, is accepted as evidence that the immediate vicinity of the corner was likely disturbed in the past. Hence, ancient, undisturbed evidence is not likely to be found at the corner. Several recorded surveys, including a survey by American Structurepoint, Inc. recorded in Survey Book 9, pages 24-25 in the Boone County Recorder's Office show the corner as a stone found. However, an earlier survey by The Schneider Corporation, recorded in Survey Book 7, page 9, computes the corner with respect to the existing monumentation and plat dimensions of the adjoining Countrywood Addition. The Schneider survey is referenced as the basis for the subsequent plats of the adjoining Brookhaven Additions. Given that the stones found around the post are not accepted as marking the corner, that ancient evidence is likely obliterated, and that the adjoining subdivisions are referenced to a common corner, the position of the corner which fits with the Countrywood and Brookhaven plats was held. The position of the corner was computed from the aforementioned Schneider survey (SB 7, p.9) and monuments found marking lot corners in Brookhaven Section 7 (Plat Book 22, pages 88-91). This point falls near the northeast edge of the existing wood post. On September 9, 2016 a thirty inch length of 5/8 inch rebar was set at this corner.



*Kenneth E. Hedge*  
 Kenneth E. Hedge, County Surveyor

*James S. Swift*  
 James S. Swift, IN LS 20200054  
 March 23, 2017

Union Township





# SECTION CORNER RECORD

# SE 300-1050

## BOONE COUNTY SURVEYOR'S OFFICE

State Plane grid coordinates NAD83 (NSRS 2007):

North: 1731135.29 East: 3180725.98 (U.S. survey feet)

Type of monument: Harrison, 4" disk 'Section Corner'

Depth: One inch below adjacent road surface

Indiana tie card references:

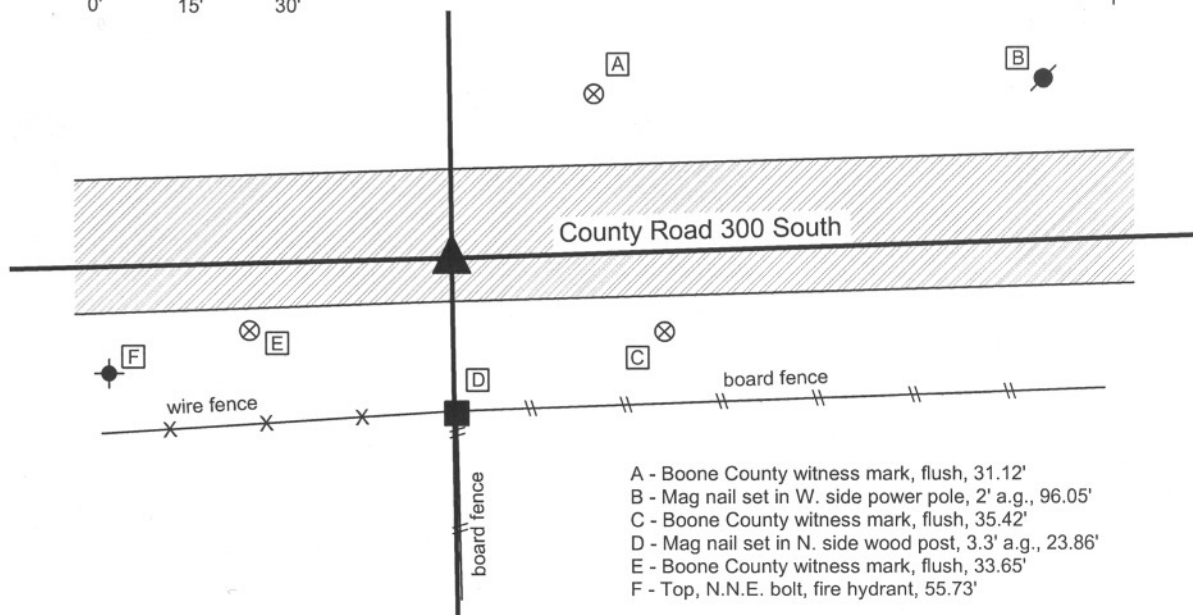
IN02\_T18NR2E14\_76

IN02\_T18NR2E23\_04



### CORNER WITNESS DETAIL

SCALE 1" = 30'

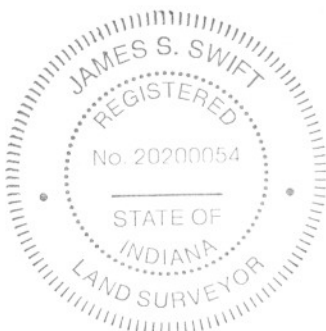


Boone County witness mark is a 3/8" diameter x 2' long rebar bearing a metal cap stamped "Boone County Witness Point."

The harrison monument was set over the etched "+" on a stone found.

A BCS tie card of April 12, 1889 states "Re-established from stump of beech; mark yet plain but rotten. Set two rocks, one 5x4x2 1/2 + Top one 20x10x10 +." A tie card of unknown source dated May 12, 1967 states "found stone with cross down 8 inches. Set iron pipe over." A note added to that tie card by a field crew from this office, dated July, 1967 states "Set R.R. rail on W. side of stone." A BCS tie card dated June 5, 1991 calls for a railroad rail at the corner. This corner was excavated on August 6, 2008. Prior to excvation, the railroad rail was visible several inches deep in a hole in the asphalt. Excavation revealed the record stone at 14 inches deep on the east side of the rail. With the top 10 inches of the stone exposed, the stone measures 10 inches NW-SE by 9 inches NE-SW and increasing in size iin the NE-SW dimension as the stone goes deeper into the ground. The harrison monument was set over the top of the etched "+" on the stone.

This corner was originally established as a wood post in July, 1821.



*Kenneth E. Hedge*  
Kenneth E. Hedge, County Surveyor

*James S. Swift*  
James S. Swift, IN LS 20200054

March 11, 2009

Union Township

Section 14  
T18N, R2E

Eagle Township

Section 23  
T18N, R2E

PHOTOGRAPHIC DOCUMENTATION

Date of photography: August 6, 2008

View from north, looking across stone and along the fence line to the south. The railroad rail which had been against the west side of the stone was removed and is lying at the south edge of the road.



Corner stone - overhead view from south.



Corner stone - overhead view from west.



Same picture as to the left with etched "+" enhance for ease of visual detection.



For details and documentation, refer to related sheet "Section Corner Record."



# SECTION CORNER RECORD

## BOONE COUNTY SURVEYOR'S OFFICE

SE 300-1100

State Plane grid coordinates NAD83 (NSRS 2007):

North: 1731212.63 East: 3183418.78 (U.S. survey feet)

Type of monument: Harrison, 4" disk 'Section Corner'

Depth: flush with adjacent ground in median

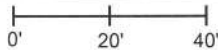
Indiana tie card references:

IN02\_T18NR2E13\_72 IN02\_T18NR2E14\_80

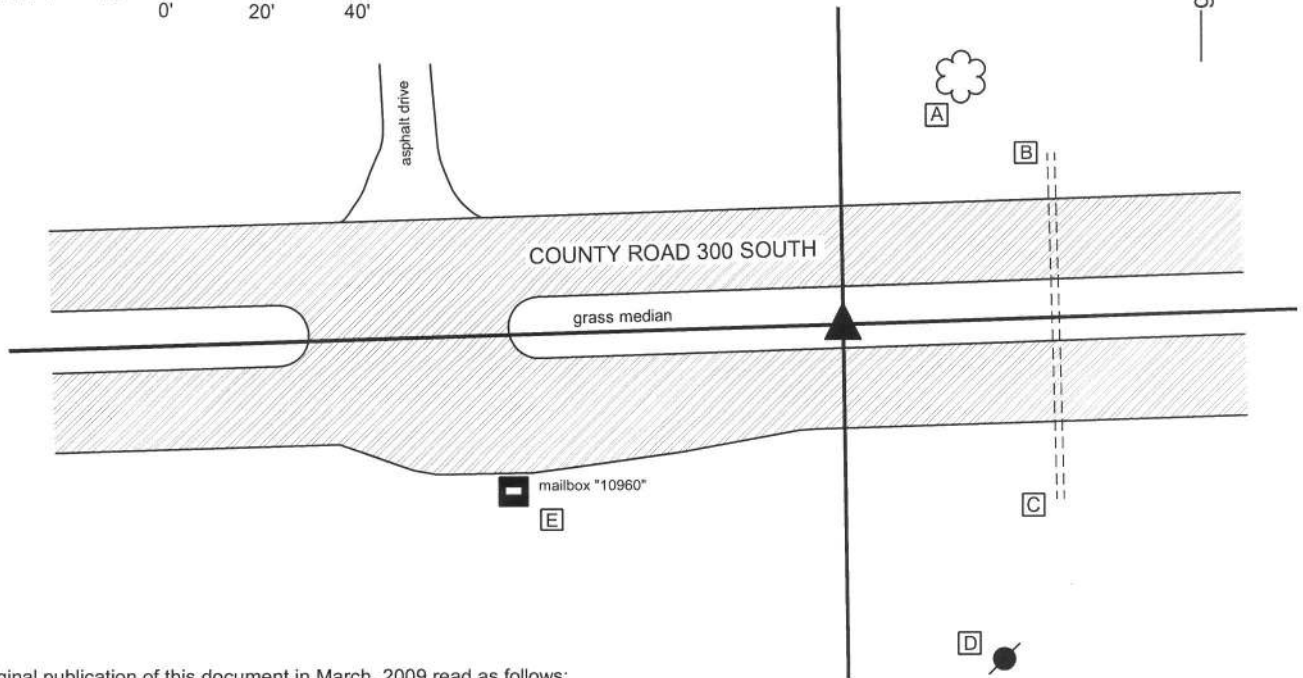
IN02\_T18NR2E23\_08 IN02\_T18NR2E24\_00

### CORNER WITNESS DETAIL

SCALE 1" = 40'



- A - 16 inch diameter Oak tree, south edge at 2' a.g., 52.0'
- B - Top, North end, 20"x30" squashed concrete storm pipe, 56.0'
- C - Top, south end, 20"x30" squashed concrete storm pipe, 58.0'
- D - Mag nail set in N. side power pole, 2' a.g., 74.6'
- E - N.E. corner, steel mailbox post, # 10960, 76.5'

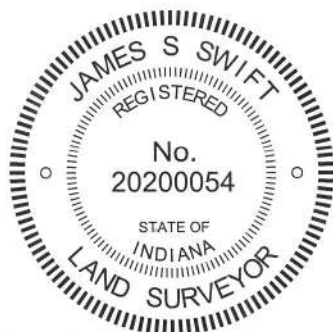


The original publication of this document in March, 2009 read as follows:

"The harrison monument was set in place of a mag nail and stone.

A BCS record of January 20, 1874 states "Reestablished after running all four lines terminating here. Set a rock 21.18.12 +". A tie card of unknown source dated May 12, 1967 states "found stone with cross. Set iron pipe over." A note added to that tie card by a field crew from this office, dated July, 1967 states "Set R.R. rail on N. side of stone." A BCS tie card dated July 5, 2006 shows the corner as a mag nail with no documentation about source. This corner was excavated on August 6, 2008. Prior to excavation a mag nail was visible, approximately one inch below the surface of the road in a hole in the asphalt. Excavation revealed the railroad rail at 20 inches deep and the stone at 23 inches deep. The etched "+" on the stone was on the north downslope of the top of the stone. The rail was leaning against the north side of the stone, extending to approximately over the "+". Please refer to the attached sheet for photographic documentation. The mag nail had been over the top, center of the stone while the top of the rail had been slightly north. All three monuments were removed. The stone was removed due to the proposed reconstruction of this section of road. The harrison monument was set in the position of the mag nail, which is also the position of the top, center of the stone. This corner was originally established as a wood post in July, 1821."

Major reconstruction of the road since the corner was confirmed in 2009 disturbed but did not destroy the harrison monument. The monument was found at 1.2 feet deep in the grass median of the newly constructed road. The monument appeared to have been sheered off but the position of the monument had not been changed. The monument did not appear to have been tilted or displaced in any way. The damaged harrison was left in place and on May 16, 2013 a new harrison monument was set directly over the old one in the same horizontal position.



*Kenneth E. Hedge*  
 \_\_\_\_\_  
 Kenneth E. Hedge, County Surveyor

Union Twp

*James S. Swift*  
 \_\_\_\_\_  
 James S. Swift, IN LS 20200054

Eagle Twp

March 11, 2009, Revised February 5, 2015

Section 14 T18N, R2E	Section 13 T18N, R2E
Section 23 T18N, R2E	Section 24 T18N, R2E

PHOTOGRAPHIC DOCUMENTATION

Date of photography: August 6, 2008

Corner stone and railroad rail. The rail was situated against the north side of the stone, which is in agreement with the 1967 tie card.



Corner stone after rail was removed. The rail was leaning along the side of the stone with the top of the rail over the etched "+" on the stone.



Corner stone and railroad rail - both removed from ground. The stone was removed due to proposed reconstruction of County Road 300 South. The rail is 30 inches long. The stone matches the 1874 record description of "set rock 21.18.12 +"



Same picture as above with etched "+" enhanced for ease of visual detection.



For details and documentation, refer to related sheet "Section Corner Record."