

SECTION CORNER RECORD

SW 250-100

BOONE COUNTY SURVEYOR'S OFFICE

State Plane grid coordinates NAD83 (2011):

North: 1732249.83 East: 3119547.27 (U.S. survey feet)

Type of monument: Harrison, 4" disk 'Section Corner'

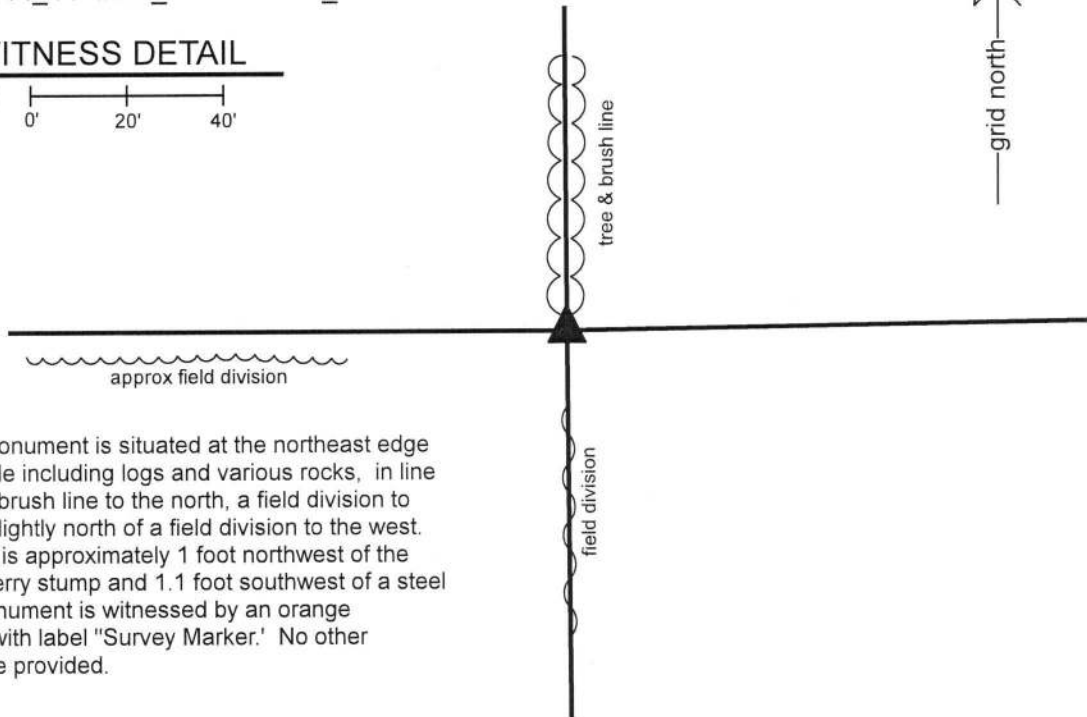
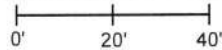
Depth: Four inches above adjacent ground

Indiana tie card references:

IN02_T18NR1W14_44 IN02_T18NR1W13_36

CORNER WITNESS DETAIL

SCALE 1" = 40'



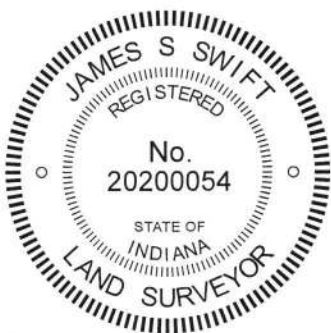
The Harrison monument is situated at the northeast edge of a pile of rubble including logs and various rocks, in line with a tree and brush line to the north, a field division to the south and slightly north of a field division to the west. The monument is approximately 1 foot northwest of the edge of a mulberry stump and 1.1 foot southwest of a steel t-post. The monument is witnessed by an orange fiberglass lath with label "Survey Marker." No other distance ties are provided.

The Harrison monument was set in place of a wood post found.

A BCS record dated April 27, 1870 states, with respect to this corner, "Rock large from Elm Stump." No dimensions are given for the rock. No recent BCS tie cards were found referencing the corner.

Reconnaissance and minor excavation was performed at this corner on October 16, 2016. More substantial excavation was performed on December 19, 2018. On both occasions a large, ancient wood post was observed. Several rocks were found around the base of the post, none of which appeared to have been purposely set to mark the corner. A stone at the southwest edge of the post appeared that it could mark the corner, but was found to be sitting on top of the ground, not embedded in any way and easily moved with a shovel. The stone was of medium size, not "large" as compared to other found corner stones that are known to mark corners. The stone was not accepted as marking the corner. The post is clearly old, appears to have been a corner post and is known to have been held as marking the corner for previous surveys. Kevin Miller, owner of the adjoining property to the southwest, testifies that this post has long been accepted as marking the corner. The post, as found, was stable and firmly set in the ground. The post was pulled from its position by Mr. Miller and a Harrison monument was set in its place on December 20, 2018. For purposes of protecting the monument, the aforementioned rock was placed at the northeast edge of the monument.

This corner was originally established as a wood post in 1820.



Kenneth E. Hedge
Kenneth E. Hedge, County Surveyor

James S. Swift
James S. Swift, IN LS 20200054
January 16, 2019

Center Township

Section 14 T18N, R1W	Section 13 T18N, R1W
-------------------------	-------------------------

SECTION CORNER RECORD

SW 250-200

BOONE COUNTY SURVEYOR'S OFFICE

State Plane grid coordinates NAD83 (2011):

North: 1732250.64 East: 3114265.00 (U.S. survey feet)

Type of monument: Harrison, 4" disk 'Section Corner'

Depth: Flush with adjacent ground

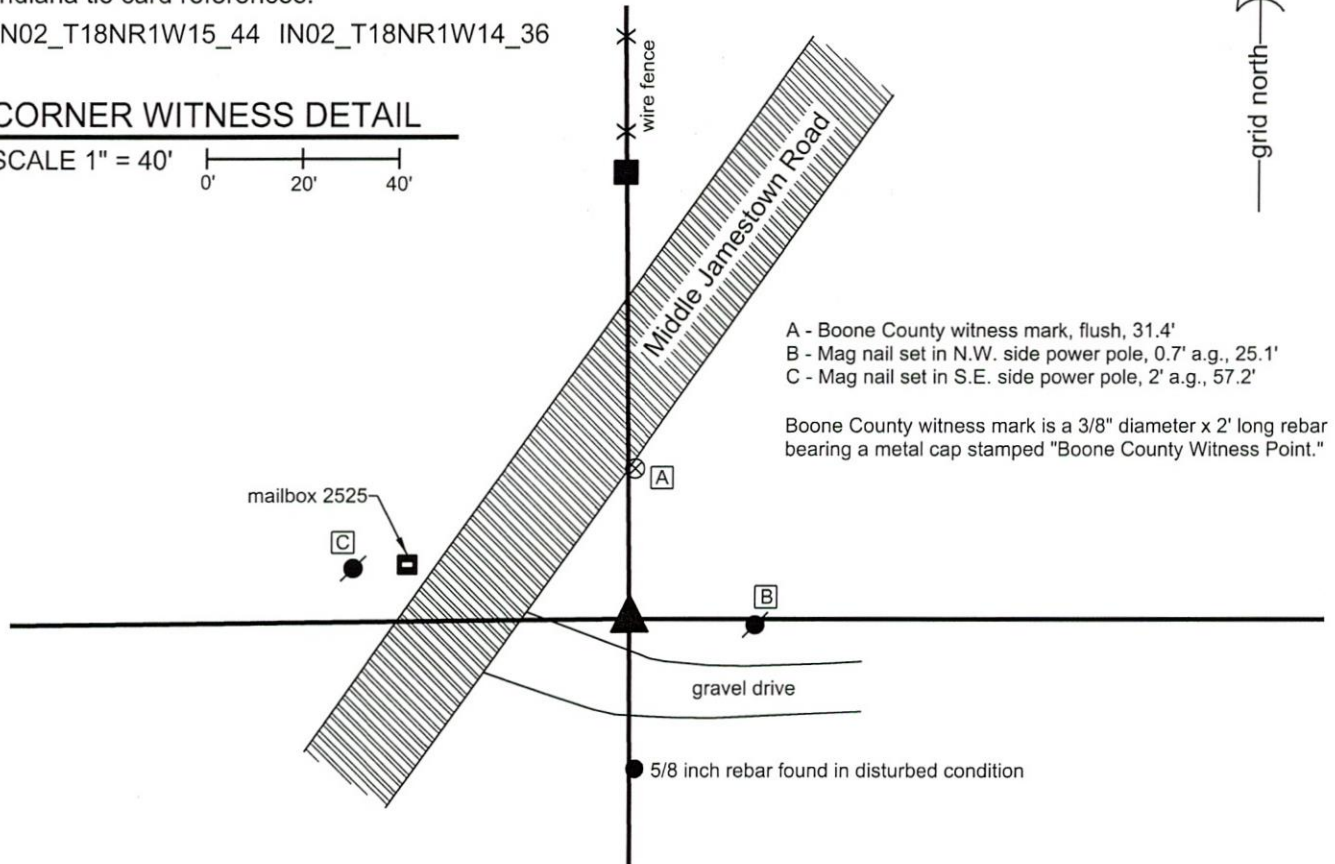
Indiana tie card references:

IN02_T18NR1W15_44 IN02_T18NR1W14_36



CORNER WITNESS DETAIL

SCALE 1" = 40'



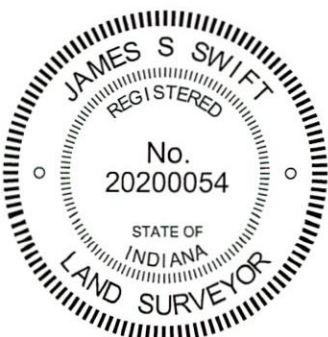
The Harrison Monument was set in place of a 5/8 inch diameter rebar with plastic cap stamped "CARTER S0350."

No specific descriptions of this corner were found in the BCS Surveyor's Record, though the corner is mentioned as the terminal point for records of 1857 for both sections 14 and 15.

The found rebar was in line with an ancient fence to the north, on the north side of Middle Jamestown Road. The rebar was also in line with occupation to the east in the form of a field/grass division and a line of power poles and appeared to mark not just the section line but also the north edge of a 30 foot strip for a drive associated with the property to the east. Another 5/8 inch diameter rebar was found approximately 31 feet south of the Carter rebar. The southern rebar is substantially disturbed, but fits generally with the deed call of 30.51 feet between the quarter section corner and a private property corner as recited in Instrument 20130000679 in the Office of the Boone County Recorder.

Manual excavation and extensive probing in the vicinity of the Carter rebar yielded no further evidence of the corner. The Carter rebar was held as marking the corner and a Harrison Monument was set in the same position on September 15, 2017. The Carter rebar was removed during installation of the Harrison monument. The southerly rebar was left in place, as found.

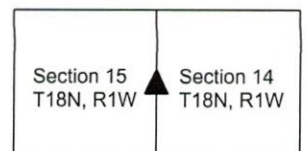
This corner was originally established as a wood post in 1820.



Kenneth E. Hedge, County Surveyor

James S. Swift, IN LS 20200054
September 19, 2017

Center Township



SECTION CORNER RECORD

SW 300-100

BOONE COUNTY SURVEYOR'S OFFICE

State Plane grid coordinates NAD83 (2011):

North: 1729602.68 East: 3119571.82 (U.S. survey feet)

Type of monument: Harrison, 4" disk 'Section Corner'

Depth: One inch below adjacent road surface

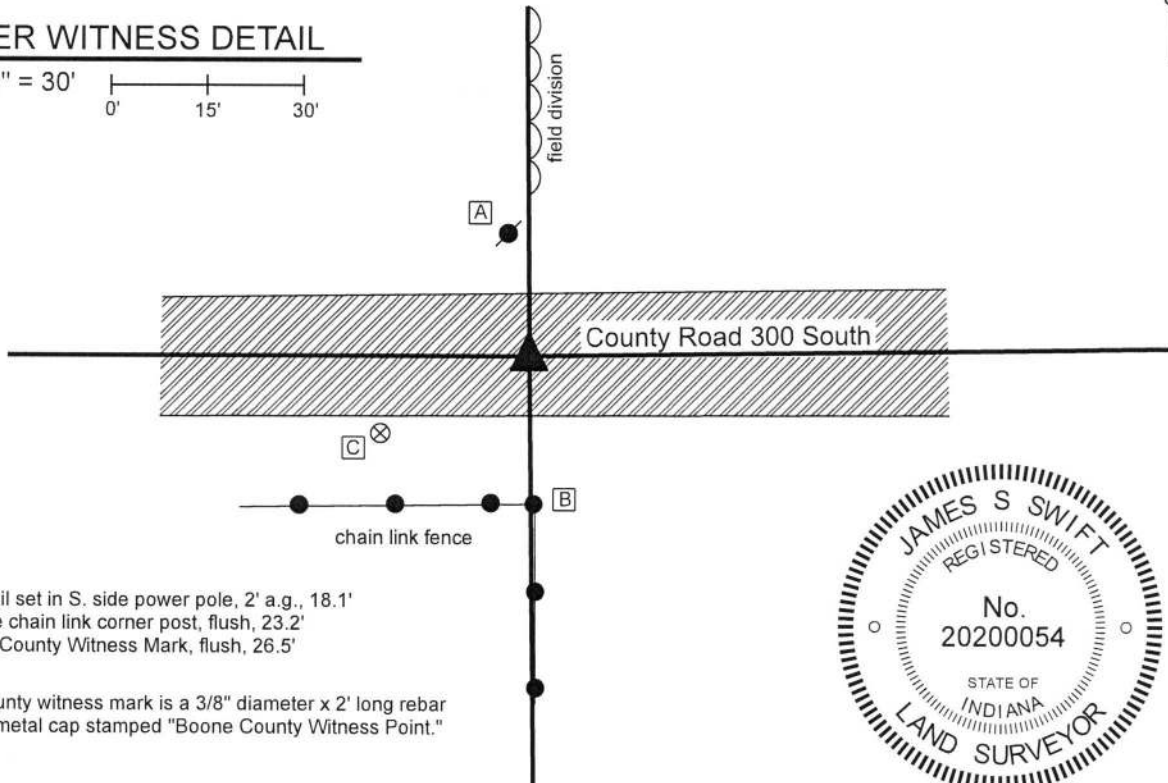
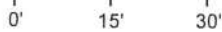
Indiana tie card references:

IN02_T18NR1W14_80 IN02_T18NR1W13_72

IN02_T18NR1W23_08 IN02_T18NR1W24_00

CORNER WITNESS DETAIL

SCALE 1" = 30'



- A - Mag nail set in S. side power pole, 2' a.g., 18.1'
- B - S. edge chain link corner post, flush, 23.2'
- C - Boone County Witness Mark, flush, 26.5'

Boone County witness mark is a 3/8" diameter x 2' long rebar bearing a metal cap stamped "Boone County Witness Point."



The Harrison monument was set over a vertical section of railroad rail found.

No specific descriptions of this corner were found in the BCS Surveyor's record beyond the original establishment of the corner as a wood post in 1820. The corner is referenced, but not described, in a record of June 18, 1861, indicating that some object was present from which to measure at that time. A BCS tie card dated July 24, 1967 shows the corner as stone located.

Minor excavation was performed at this corner on on June 29, 2018. Prior to excavation, a Mag nail was found at the surface. Excavation revealed a vertical section of railroad rail at 9 inches deep, approximately below the mag nail. Although the rail is not specifically mentioned in the 1967 record, it is known that the practice of BCS field crews in that era was to remove a stone, if found, and replace it with a railroad rail. No stone or other evidence was found near the rail during excavation. It is believed that the stone was removed and replaced with the rail in 1967. The rail fits with evidence of occupation to the north and south. The rail was accepted as marking the corner. The rail was left in place, two sections of 3/8" diameter rebar were driven on the sides of the rail, and a Harrison monument was set directly over the top of the rail.

Kenneth E. Hedge
Kenneth E. Hedge, County Surveyor

James S. Swift
James S. Swift, IN LS 20200054
July 25, 2018

Center Township

Section 14 T18N, R1W	Section 13 T18N, R1W
Section 23 T18N, R1W	Section 24 T18N, R1W

Harrison Township

SECTION CORNER RECORD

SW 300-200

BOONE COUNTY SURVEYOR'S OFFICE

State Plane grid coordinates NAD83 (2011):

North: 1729601.45 East: 3114284.62 (U.S. survey feet)

Type of monument: 5/8" Rebar with metal cap (see notes)

Depth: Four inches above adjoining ground

Indiana tie card references:

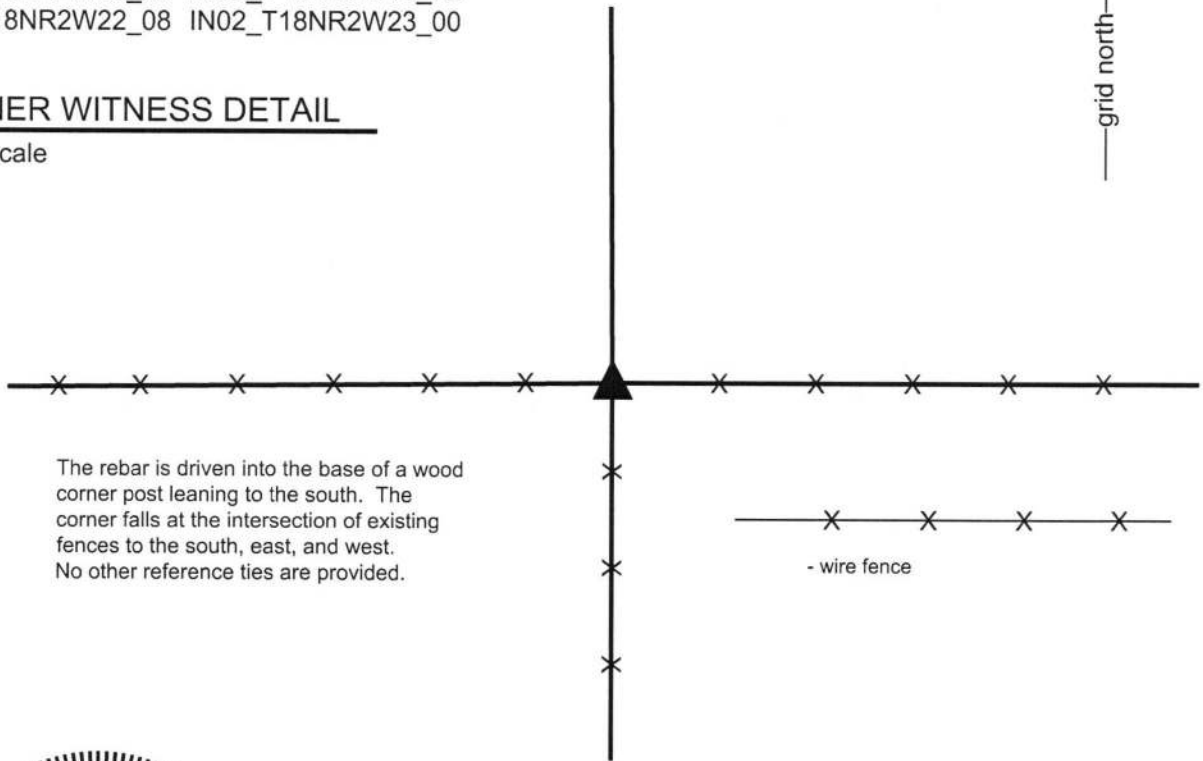
IN02_T18NR2W15_80 IN02_T18NR2W14_72

IN02_T18NR2W22_08 IN02_T18NR2W23_00



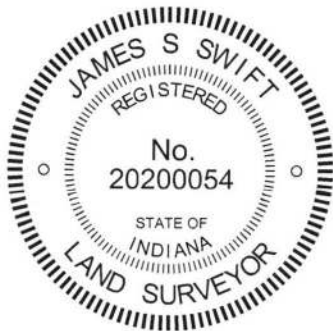
CORNER WITNESS DETAIL

Not to scale



The rebar is driven into the base of a wood corner post leaning to the south. The corner falls at the intersection of existing fences to the south, east, and west. No other reference ties are provided.

- wire fence



The rebar was driven into the subterranean base of a wood corner post.

No specific descriptions of this corner were found in the BCS Surveyor's Record nor were any recent BCS tie cards found referencing this corner.

Substantial local evidence of the corner exists in the form of a wood corner post at the intersection of old, well established fences to the south, east and west. The position of the post works well with respect to proximate corners. Manual excavation around the base of the post on October 18, 2016 yielded neither stone nor other evidence of the corner found. The post was accepted as providing the best available evidence of the corner and was held as marking the corner. The post leans to the south. A 30 inch length of 5/8 inch diameter rebar was driven vertically at the approximate position of the base of the post. The rebar was driven into the base of the post below ground. Above ground, the top of the rebar and the metal cap appear to be at the north edge of the leaning post. As the rebar is intended to occupy the same position of the base of the post, the rebar is held as marking the specific location of the corner.

This corner was established as a wood post in 1820.


Kenneth E. Hedge, County Surveyor


James S. Swift, IN LS 20200054

March 23, 2017

Jefferson
Township

Section 15 T18N, R2W	Section 14 T18N, R2W
Section 22 T18N, R2W	Section 23 T18N, R2W

Jackson
Township