

# SECTION CORNER RECORD

NW 900-650

## BOONE COUNTY SURVEYOR'S OFFICE

State Plane grid coordinates NAD83 (2011):

Stone (top, high point): North: 1793196.36 East: 3090452.75 (U.S. survey feet)

Witness Rebar: North: 1793196.86 East: 3090452.75 (U.S. survey feet)

Corner monument: Stone, 6 inches below adjacent ground

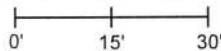
Witness monument: 5/8 inch rebar with Aluminum Cap stamped with Boone County Surveyor, flush

Indiana tie card references:

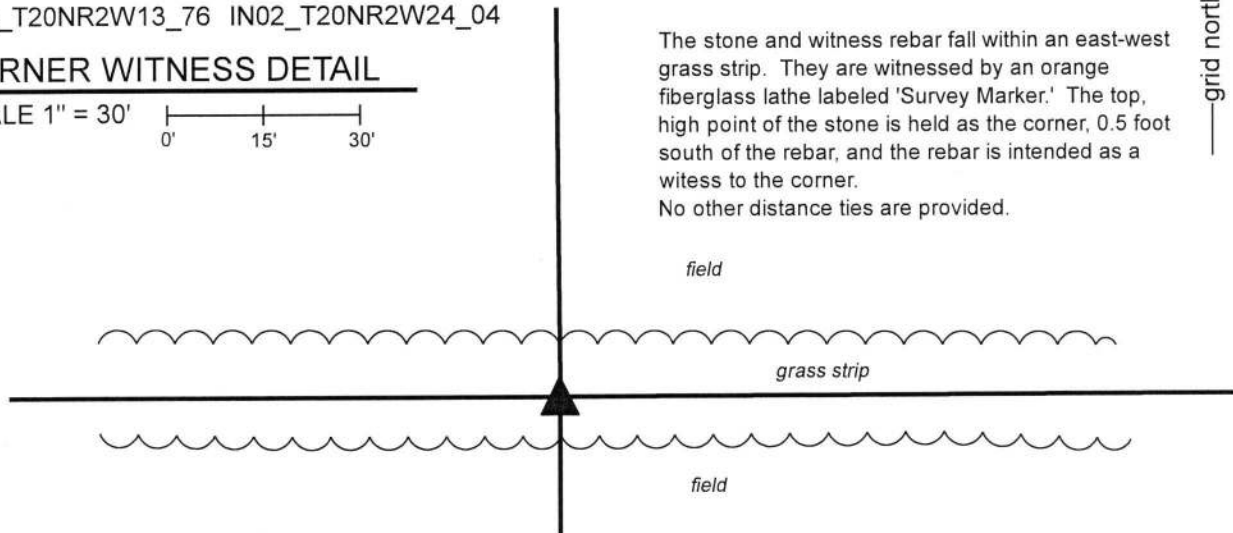
IN02\_T20NR2W13\_76 IN02\_T20NR2W24\_04

### CORNER WITNESS DETAIL

SCALE 1" = 30'



The stone and witness rebar fall within an east-west grass strip. They are witnessed by an orange fiberglass lathe labeled 'Survey Marker.' The top, high point of the stone is held as the corner, 0.5 foot south of the rebar, and the rebar is intended as a witness to the corner. No other distance ties are provided.



The stone was found in place. The 5/8 inch diameter rebar with 'Boone County Surveyor' cap is intended as a witness to the stone, set along the north edge, 0.5 foot north of the top, high point of the stone.

A BCS Record dated April 22, 1913 states, with respect to this corner, "Found Rock at true point (not recorded)." The record shows distances to the corners 1/4 and 1/2 miles east and west, respectively. The distances shown are not equal, being 20 chains and 20 chains to the west and 19.79 and 19.79 chains to the east.

This corner was excavated on November 8, 2018. Prior to excavation, no specific survey monuments were found in the vicinity of the corner. A survey by Jerry L. Carter, LS S0350, recorded in Survey Book 5, page 47 in the Office of the Boone County Recorder shows the corner as a steel post. An approximate position for the corner was computed with respect to the Carter survey and with respect to the monumented center of section 13 (see BCS Corner NW 950-650) and a wood corner post found approximately 1/4 mile north of the subject corner, said post being the corner post for fences to the north and east. Excavation in the vicinity of the computed position revealed evidence of an east-west fence, mostly removed but with numerous scraps of wire left in the ground, in an east-west grass strip. Numerous small stones were found in the immediate vicinity of the corner. One larger stone was found which bears the characteristics of a stone purposely set to mark the corner. The top of the stone was found at 6 inches deep. The stone is 15 inches tall by 14 inches N-S by 12 inches E-W. A fallen down steel t-post was found along the west edge of the stone and fragments of an old wood post were found along the east edge of the stone. The north, east and west sides of the stone are flat and vertical while the south side slopes. The stone falls approximately 1.5 feet west of a line extended from a post on the southerly edge of County Road 950 North, immediately south of and approximately 1 foot east of the center of section 13, through the aforementioned corner post approximately 1/4 mile north of the subject corner. The relative position of the stone and evidence of the corners 1/2 and 1/4 mile east and west, respectively, works well with the unequal distances shown on the 1913 record. The stone appears to be 2.8 feet west of the position of the steel post shown on the Carter survey. The steel post was not found and appears to have been removed.

No specific marks were found on the stone, nor are any noted in the 1913 record. The stone was accepted as the best available evidence of the corner. The top, high point of the stone is held as the specific position of the corner. The 5/8 inch diameter witness rebar was driven along the north edge of the stone, 0.5 foot north of the point on the stone held as marking the corner.

This corner was originally established as a wood post in 1829.



*Kenneth E. Hedge*  
 Kenneth E. Hedge, County Surveyor

*James S. Swift*  
 James S. Swift, IN LS 20200054  
 February 20, 2019

Sugar Creek Township

Section 13  
T20N, R2W

Section 24  
T20N, R2W

# SECTION CORNER RECORD

NW 900-700

## BOONE COUNTY SURVEYOR'S OFFICE

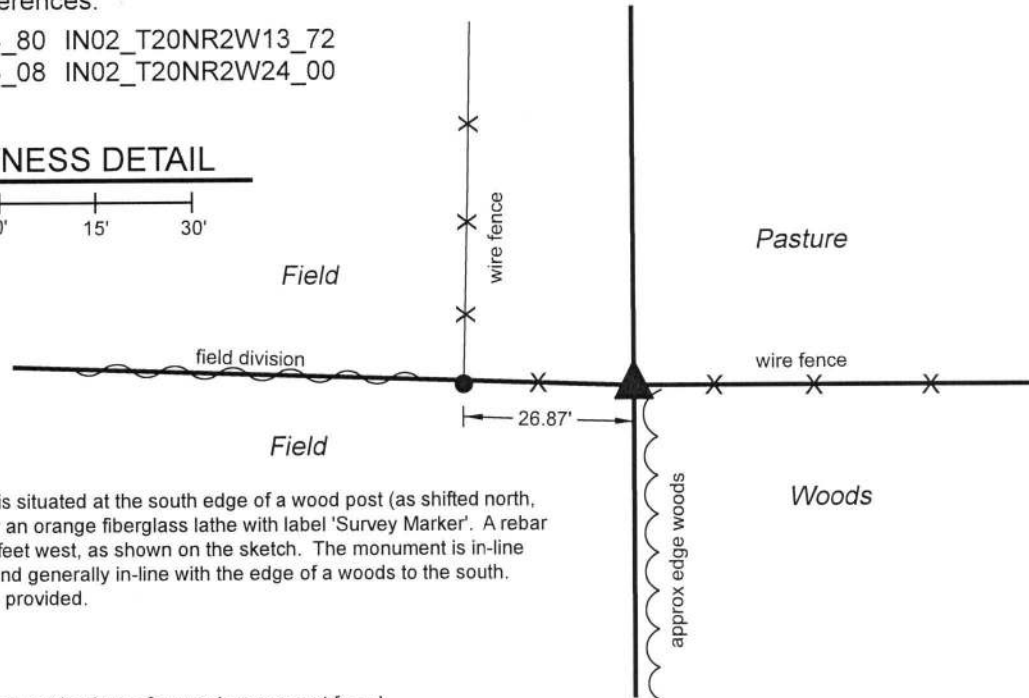
State Plane grid coordinates NAD83 (2011):  
North: 1793194.95 East: 3087813.28 (U.S. survey feet)

Type of monument: Harrison, 4" disk 'Section Corner'  
Depth: Three inches above adjacent ground

Indiana tie card references:  
IN02\_T20NR2W14\_80 IN02\_T20NR2W13\_72  
IN02\_T20NR2W23\_08 IN02\_T20NR2W24\_00

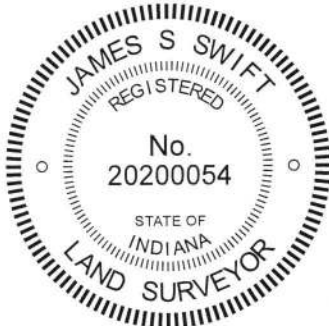
### CORNER WITNESS DETAIL

SCALE 1" = 30'  
0' 15' 30'



The Harrison monument is situated at the south edge of a wood post (as shifted north, see below), witnessed by an orange fiberglass lathe with label 'Survey Marker'. A rebar with yellow cap is 26.87' feet west, as shown on the sketch. The monument is in-line with an east west fence and generally in-line with the edge of a woods to the south. No other distance ties are provided.

The Harrison monument was set in place of a wood corner post found. A BCS record dated May 8, 1873 states, with respect to this corner, "Reestablished. Set a Rock 14.13.6 +." No recent BCS tie cards were found referencing this corner. A survey by Jerry L. Carter, LS S0350, recorded as document 0303136 in the Office of the Boone County Surveyor, shows the corner as a head post and shows a rebar with cap 26.87 feet to the west. This corner was excavated on November 7, 2018. Prior to excavation, the post and rebar called in the Carter survey were found as shown on the survey. Excavation in the vicinity of the post revealed numerous rocks and a variety of rubble, including broken pieces of concrete. One notable stone was found at 17 inches deep, below most of the rubble. The top of the stone measured 18 inches E-W by 9 inches N-S. The height of the stone was not measured. The center of the top of the stone was 16 inches south of the post. The stone does not match the dimensions called in 1873 record and did not appear to be a stone purposely set to mark the corner. The stone was not accepted as marking the corner. The post fits well with the relative positions of other proximate corners and falls in line with a fence to the east and the edge of a wood line to the south. The Carter survey shows the post to be in line with a fence to the south. The fence has evidently been removed since the survey was made, but the post and approximate wood line fall generally in line with the prolongation of the center of County Road 700 West, beginning approximately 1/4 mile south of the corner. The Carter survey also shows the post in line with a N-S fence beginning 495 feet north of the corner. The post was accepted as providing the best available evidence of the corner. The post was broken at ground level but standing as supported by the fencing to the east and west. The top portion of the post was pushed toward the north and stabilized by a 5/8 inch rebar driven along the south edge of the post, as shifted to the north. The portion of the post remaining in the ground was found to be mostly rotten. This portion was removed and a replaced with a Harrison monument. It is noted that the monument is situated in the precise position of the center of the post, as originally found, and that the remaining portion of the post, suspended amongst the fencing, is north of its original position. It is also noted that a fence bearing north from the rebar found 26.87 feet west of the corner does not fall along the section line. This is clearly demonstrated on the Carter survey. The land descriptions for numerous properties to the northwest, northeast and southeast contain similar language to the description contained in the Carter survey and appear to hold the post as the corner. Hence the presence of the north-south fence west of the section line is not considered an uncertainty. This corner was originally established as a wood post in 1829.



*Kenneth E. Hedge*  
Kenneth E. Hedge, County Surveyor

*James S. Swift*  
James S. Swift, IN LS 20200054  
January 23, 2019

Sugar Creek Township

Section 14 T20N, R2W	Section 13 T20N, R2W
Section 23 T20N, R2W	Section 24 T20N, R2W

# SECTION CORNER RECORD

## BOONE COUNTY SURVEYOR'S OFFICE

NW 950-600

State Plane grid coordinates NAD83 (CORS96):

Corner 1: North: 1795848.78 East: 3093058.11 (U.S. survey feet)

Corner 2: North: 1795805.88 East: 3093057.50 (U.S. survey feet)

Type of monument, Corner 1: Harrison, 4" disk 'Section Corner'

Type of monument, Corner 2: Stone

Depth: flush with adjacent ground (both corners)

Indiana tie card references: IN02\_T20NR2W13\_44 IN02\_T20NR1W18\_36

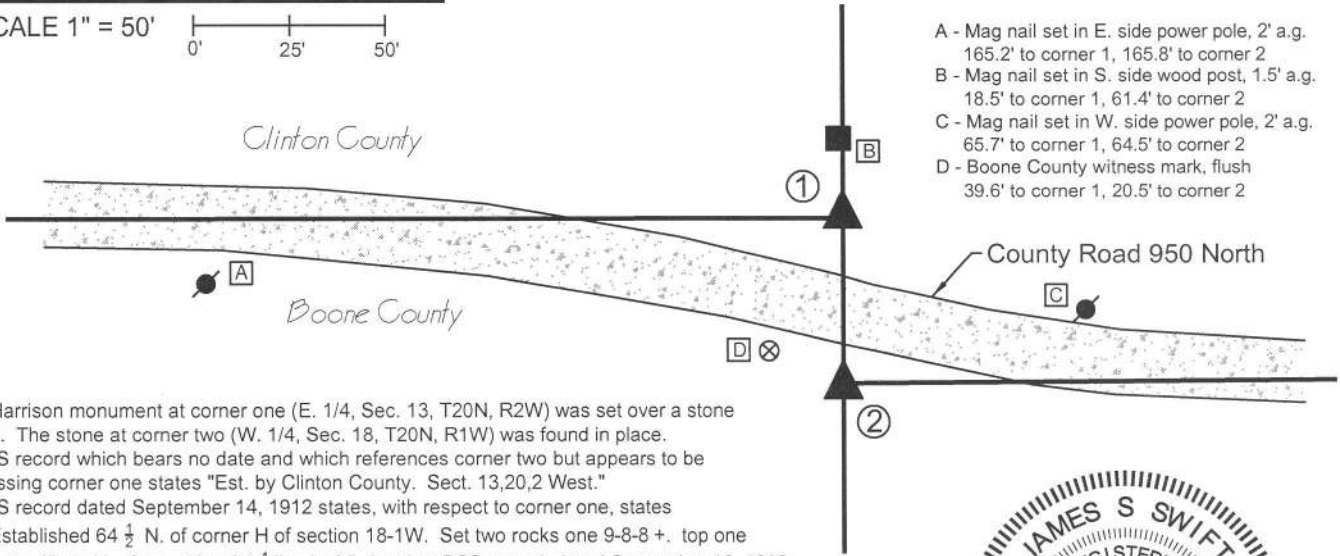
### CORNER WITNESS DETAIL

SCALE 1" = 50'

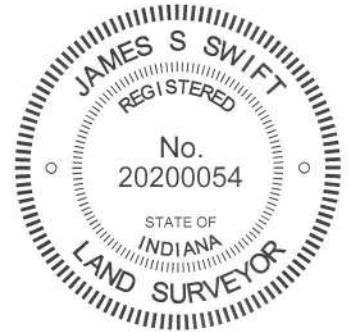
- ① E. 1/4 corner, Section 13  
T 20 N, R 2 W  
Harrison set over record lower stone
- ② W. 1/4 corner, Section 18  
T 20 N, R 1 W  
Top, high point, existing stone (flush)  
Distance between monuments = 42.9'



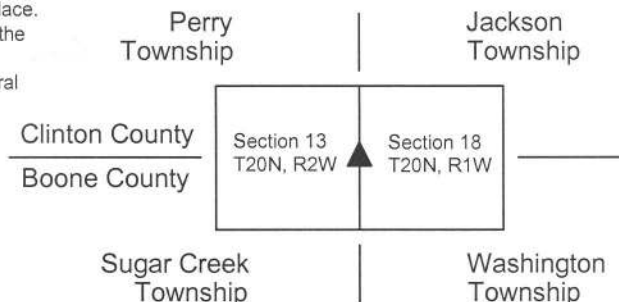
- A - Mag nail set in E. side power pole, 2' a.g.  
165.2' to corner 1, 165.8' to corner 2
- B - Mag nail set in S. side wood post, 1.5' a.g.  
18.5' to corner 1, 61.4' to corner 2
- C - Mag nail set in W. side power pole, 2' a.g.  
65.7' to corner 1, 64.5' to corner 2
- D - Boone County witness mark, flush  
39.6' to corner 1, 20.5' to corner 2



The Harrison monument at corner one (E. 1/4, Sec. 13, T20N, R2W) was set over a stone found. The stone at corner two (W. 1/4, Sec. 18, T20N, R1W) was found in place. A BCS record which bears no date and which references corner two but appears to be discussing corner one states "Est. by Clinton County. Sect. 13,20,2 West." A BCS record dated September 14, 1912 states, with respect to corner one, states "Re-Established 64 1/2 N. of corner H of section 18-1W. Set two rocks one 9-8-8 +. top one 14-13-7 + (D. to H. of sec. 18 is 64 1/2 lks. lap)." Another BCS record, dated September 16, 1912 but which also references the date November 11, 1889, and specifically discusses corner one, states "Some parties doubting the correctness and legality of this corner as established above and desiring joint action with the Surveyor of Clinton County, I met with Mr. Hill, C.S. of C.C. We measured the east line of the section and found D as above to be mid-way between E & C. (2645 feet from each) but 12 feet East of a straight line. H of section 18 having been established by Clinton Surveyor, there being a rock at that point, with roots to agree with witnesses and D having been set the proper distance North we agree that the same be taken as correct. The corners E & d, indicating the same point (very nearly)." Stone were found at both corners during the Spring of 2014. The stone at corner two (corner H, section 13) is flush with the surface with a distinct high point. The stone at corner one was found at approximately 8 inches deep in a hole with a piece of metal above it and a surveyor's lathe next to it. Clearly this stone has been found in recent years by private surveyors. Excavation on October 10, 2014 yielded the observation that the stone at corner one is actually the bottom stone described in the 1912 record, 9 inches tall by 8 inches E-W and N-W with a clearly etched "+" mark on top. Sufficient excavation was performed at corner two to demonstrate that this stone is very large with sloping sides. The small part of the stone visible at the surface represents a distinct, generally square shaped high point of the rock. The 1912 record calls for an offset (referred to as lap) of 64.5 links between the corners, which is the average of the record federal offsets at the section corners to the north and south. This distance equates to 42.57 feet. The actual distance measured between the mark on the top of the stone at corner one and the center of the top of corner 2 is 42.9 feet. The stones were accepted as marking the respective corners. Both stones were left in place. A Harrison monument was set over the etched "+" on the of the stone at corner one and the stone at corner two was left undisturbed. Corner one was set as a wood post in 1819. Corner two was not set on the original federal survey.



*James S. Swift*  
James S. Swift, IN LS 20200054  
March 27, 2015



*Kenneth E. Hedge*  
Kenneth E. Hedge, County Surveyor



PHOTOGRAPHIC DOCUMENTATION

Date of photography: September 20 and October 10, 2014

The stone at corner one as originally found.



The stone at corner one, washed, showing mark.



The stone at corner one prior to being encased in concrete with a Harrison monument set above.



The stone at corner two as originally found, showing just the top of a large stone.



View from above corner two, looking towards corner one, marked with a shovel handle



View from above corner one, looking toward the post and brush line to the north



For details and documentation, refer to related sheet "Section Corner Record."

# SECTION CORNER RECORD

NW 950-650

## BOONE COUNTY SURVEYOR'S OFFICE

State Plane grid coordinates NAD83 (CORS96):

North: 1795847.37 East: 3090429.87 (U.S. survey feet)

Type of monument: Harrison, 4" disk 'Section Corner'

Depth: six inches below adjacent gravel road surface

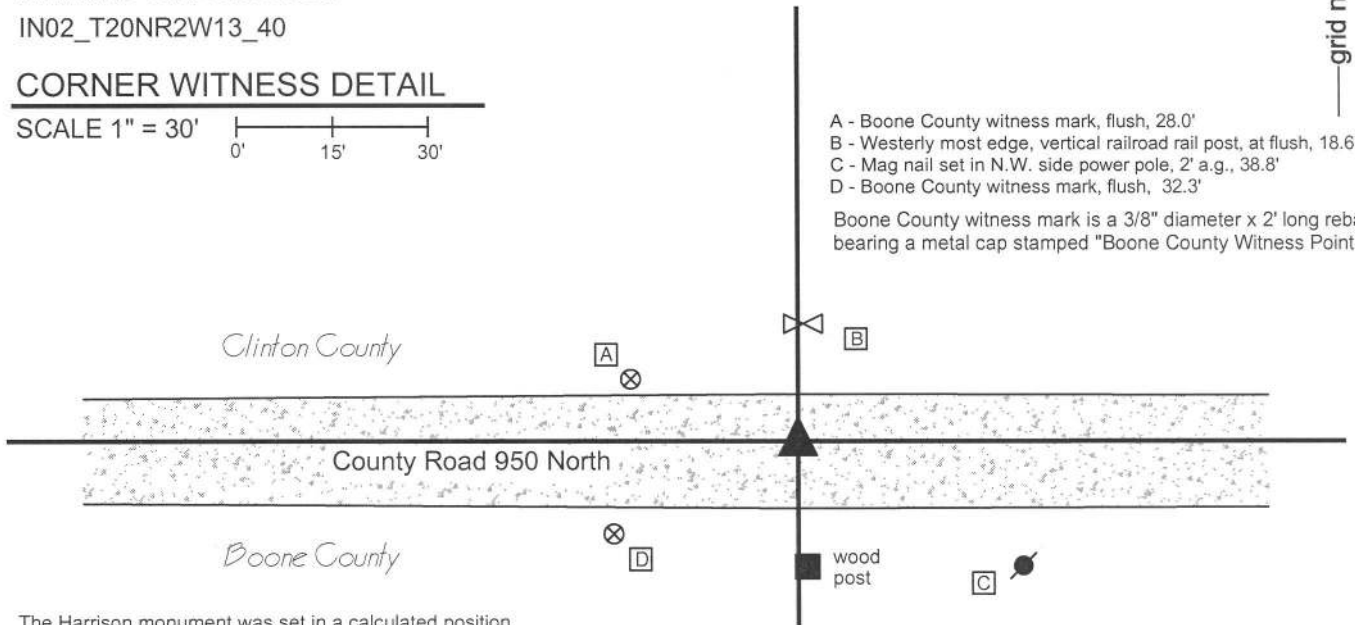
Indiana tie card references:

IN02\_T20NR2W13\_40

### CORNER WITNESS DETAIL

SCALE 1" = 30'  
0' 15' 30'

- A - Boone County witness mark, flush, 28.0'
  - B - Westerly most edge, vertical railroad rail post, at flush, 18.6'
  - C - Mag nail set in N.W. side power pole, 2' a.g., 38.8'
  - D - Boone County witness mark, flush, 32.3'
- Boone County witness mark is a 3/8" diameter x 2' long rebar bearing a metal cap stamped "Boone County Witness Point."

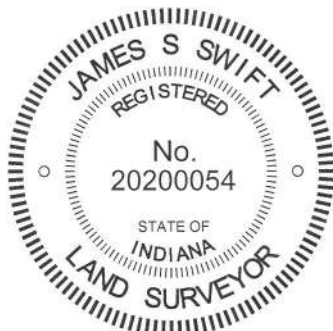


The Harrison monument was set in a calculated position.

This corner is shown as being present on a BCS record of September 15, 1855. Another BCS record, dated September 14, 1912 states "Drove a stake at true point." The same record describes the quarter-quarter corner between this corner and the east quarter corner of the section as "Re-established. Set a rock 17-12-14. One under it 9-8x4 +." The 1912 record shows the quarter-quarter corner as being at equal distances from the center and east quarter corners. No recent Boone County or Clinton County tie cards were found referencing this corner.

Excavation was initially performed at this corner on September 11, 2014. No monument was found prior to excavation but local evidence in the form of the east-west roadway, a wood post on the south side of the road and a railroad rail type post on the north side of the road made the general location of the corner readily apparent. Excavation of an 8 foot east-west by 9 foot north-south area, centered on a point one rod (16.5 feet) north of the post on the south side of the road yielded no further evidence of the corner. The road bed was found to be only 2 to 6 inches thick. Excavation was performed to at least one foot deep, well into the clay layer below the road. No monument was set at the time of excavation, pending further review of adjacent corners. Subsequently, the aforementioned quarter-quarter corner to the east was excavated. Excavation in the center of the road south of a fence to the north yielded the discovery of both rocks described as being at that corner in the 1912 record. The top rock was close to the surface and appeared to have been disturbed and displaced slightly. This rock was found to be a total of 16 inches NW-SE by 11 inches NE-SW by 12 inches and bore a vague etched "+" on top. The rock was removed and another rock was found at 13 inches deep. This rock had a flat top with a clearly etched + on top. The full dimensions of the lower rock were not measured. The rock was left in place and the etched + was located precisely with redundant RTK GPS observations.

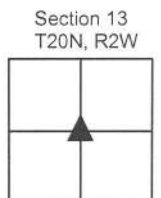
The 1912 record clearly indicated that the quarter-quarter corner was established at the midpoint between the center and east quarter corners of Section 13. It is was not specifically stated in the record but is reasonably interpreted that this point was also set on line between these corners. A position for the center quarter corner was calculated by prolonging the line connecting the Harrison monument at the east quarter corner (previously set over a stone which was also described in the 1912 record - see documentation for corner NW 950-600) with the stone found at the quarter-quarter corner. The line was prolonged at double the distance measured between the found stones. The resultant calculated position fit very well with local evidence of the corner, being near the center of the road and 0.6 of a foot west of the railroad rail post on the north side of the road and approximately 1 foot west of the wood post on the south side of the road. This position was also well within the area which had been excavated on September 11. The calculated position was held as the corner and a Harrison monument was set at this calculated position on December 4, 2014.



*Kenneth E. Hedge*  
 Kenneth E. Hedge, County Surveyor

*James S. Swift*  
 James S. Swift, IN LS 20200054  
 March 27, 2015

Perry Twp  
 Clinton County  
 Sugar Creek Twp  
 Boone County





PHOTOGRAPHIC DOCUMENTATION

Date of photography: September 11 and October 22, 2014

Excavation at the subject corner on 9/11/2014



The lower stone at the corner 1/4 mile east.  
Note the etched "+" mark on top.



The upper stone at the corner 1/4 mile east.  
View from west, looking east along C.R. 950 N.



The upper stone at the corner 1/4 mile east.  
Stone is washed. View from the south.



For details and documentation, refer to related sheet "Section Corner Record."