

SECTION CORNER RECORD

NE 900-1100

BOONE COUNTY SURVEYOR'S OFFICE

State Plane grid coordinates NAD83 (CORS96):

North: 1794702.88 East: 3182453.26 (U.S. survey feet)

Type of monument: Harrison, 4" disk 'Section Corner'

Depth: four inches below the surface of the gravel road.

Indiana tie card references:

IN02_T20NR2E14_80 IN02_T20NR2E13_72

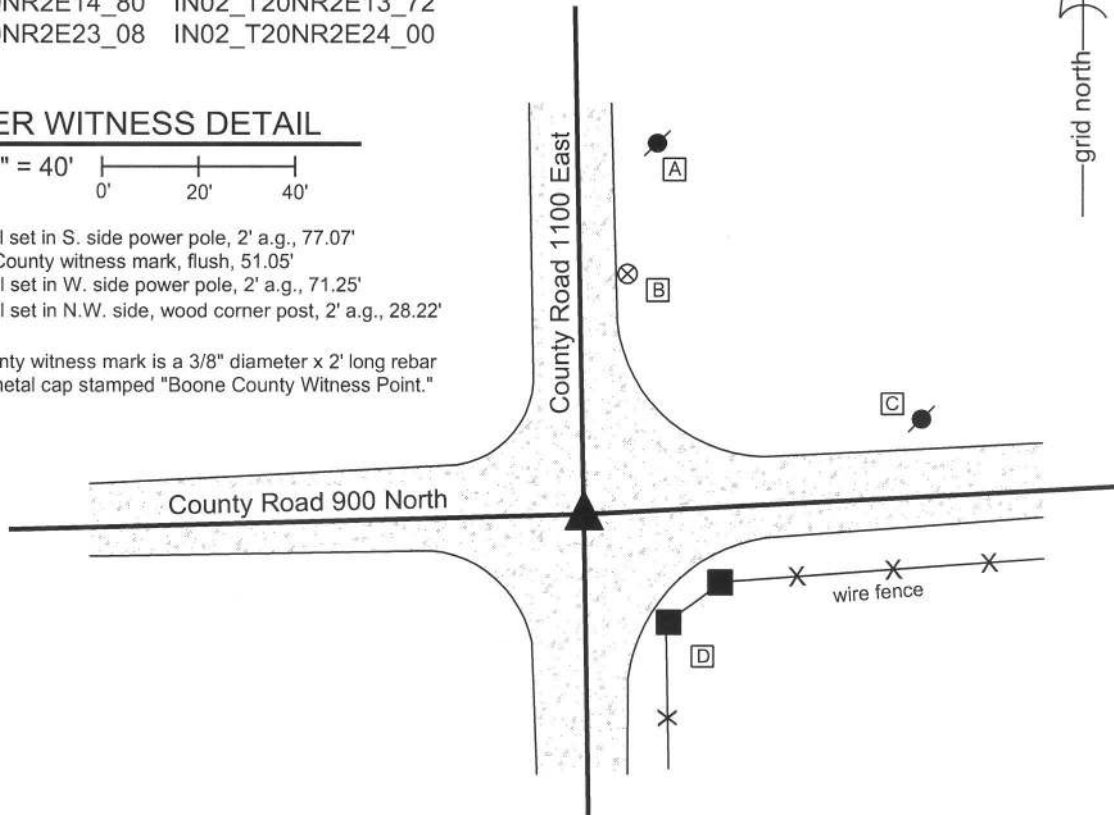
IN02_T20NR2E23_08 IN02_T20NR2E24_00

CORNER WITNESS DETAIL

SCALE 1" = 40'
0' 20' 40'

- A - Mag nail set in S. side power pole, 2' a.g., 77.07'
- B - Boone County witness mark, flush, 51.05'
- C - Mag nail set in W. side power pole, 2' a.g., 71.25'
- D - Mag nail set in N.W. side, wood corner post, 2' a.g., 28.22'

Boone County witness mark is a 3/8" diameter x 2' long rebar bearing a metal cap stamped "Boone County Witness Point."

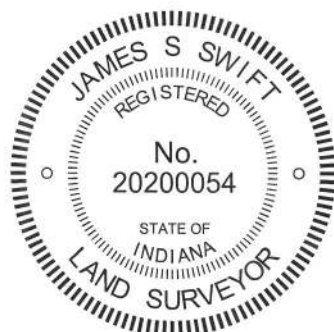


The harrison monument was set over a stone found.

A BCS record of October 4-5, 1870 states "Reestablished Set two Rocks one 8.5 1/2 by 4 + Top One 18.16 by 13 in. marked +." A BCS tie card dated August 20, 1974 states "no stone found."

This corner was excavated on September 11, 2013. Prior to excavation, a 5/8 inch diameter rebar with an orange plastic cap (markings illegible) was found 3 inches deep at the intersection of the gravel roads. Excavation revealed a stone at 12 inches deep. The stone was embedded in the clay layer below the road, protruding approximately 3 inches into the bottom of the road bed. The stone has a triangular shaped top with a long "arm" protruding toward the east. With the top 7 inches of the stone exposed, it measured 13 inches N-S by 15 inches E-W and was clearly much larger in the vertical dimension. A mark may have been present on the top of the stone but was difficult to distinguish and positively identify. The stone was accepted as being the top rock described in the 1870 record. The top 4 inches of the stone were encased in concrete and a harrison monument was set directly over the top high point / top center of the stone. The harrison monument is 8 inches tall above the stone. The rebar, removed during excavation, had been 1.2 feet north of the point held as the corner.

This corner was originally established as a wood post in 1821.



Kenneth E. Hedge
 Kenneth E. Hedge, County Surveyor

James S. Swift
 James S. Swift, IN LS 20200054
 February 5, 2015

Marion Township

Section 14 T20N, R2E	Section 13 T20N, R2E
Section 23 T20N, R2E	Section 24 T20N, R2E

PHOTOGRAPHIC DOCUMENTATION

Date of photography: September 11, 2013

View of the stone as first exposed.



The stone washed.



View from the south, looking across the stone and north along County Road 1100 East.



View from the east, looking across the stone and west along County Road 900 North.



For details and documentation, refer to related sheet "Section Corner Record."

SECTION CORNER RECORD

BOONE COUNTY SURVEYOR'S OFFICE

NE 900-1150

State Plane grid coordinates NAD83 (CORS96):

North: 1794842.23 East: 3185115.18 (U.S. survey feet)

Type of monument: Harrison, 4" disk 'Section Corner'

Depth: six inches below adjacent gravel road surface

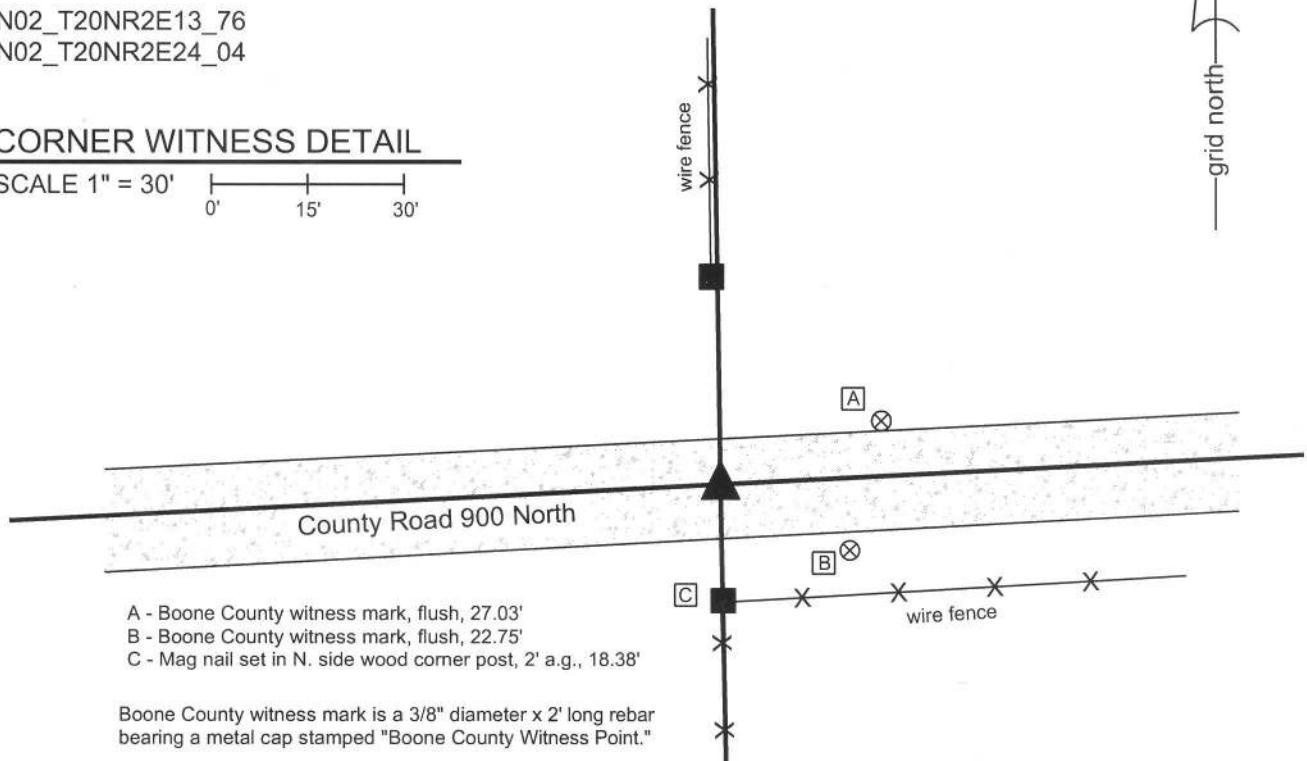
Indiana tie card references:

IN02_T20NR2E13_76

IN02_T20NR2E24_04

CORNER WITNESS DETAIL

SCALE 1" = 30'



- A - Boone County witness mark, flush, 27.03'
- B - Boone County witness mark, flush, 22.75'
- C - Mag nail set in N. side wood corner post, 2' a.g., 18.38'

Boone County witness mark is a 3/8" diameter x 2' long rebar bearing a metal cap stamped "Boone County Witness Point."

The harrison monument was set over a stone.

A BCS record of October 4-5, 1870 states "Reestablished from remains of Hickory set two Rocks One 7.6 1/2 by 4 1/2 Top one 12.8 by 6 +." A BCS tie card dated August 20, 1974 states "no stone found."

This corner was excavated on September 16, 2013. Prior to excavation, a 5/8 inch diameter rebar with a plastic cap (markings illegible) was found at 3 inches deep in the gravel road. Excavation revealed a stone found at 8 inches deep. As found, the stone appeared to be lying on its side and measured 18 inches E-W by 12 inches N-S by 7 inches tall. The stone was removed and another stone was found below and slightly east of the first stone. The second found stone was vertical and measured to be 12 inches by 8 inches by 9 inches, with an etched "+" mark on the top. This stone was also removed and a third stone was found directly below the second stone. The top of the lowest stone was measured at 7 inches E-W by 6 1/2 inches N-S with a clearly chiseled "+" mark on the top, center of the stone. The second and third stones found were accepted as being the stones described in the 1870 record. The lowest stone was at 26 inches deep. The rebar and top two stones were removed during excavation. The lowest stone was left undisturbed and a harrison monument was set directly over the etched "+" mark on the top of the stone. The rebar, removed during excavation, had been 1.8 feet south of the point held as the corner.

This corner was originally established as a wood post in 1821.



Kenneth E. Hedge
 Kenneth E. Hedge, County Surveyor

James S. Swift
 James S. Swift, IN LS 20200054
 February 5, 2015

Marion Township

Section 13
 T20N, R2E

Section 24
 T20N, R2E

PHOTOGRAPHIC DOCUMENTATION

Date of photography: September 16, 2013

View of the upper stone as first exposed.



View of the upper stone stood up.



View of the middle stone as first exposed, showing the etched + on top.



View of the middle stone fully exposed.



The lower stone was not photographed. The lower stone was left in place, at 26" deep, with the harrison monument set directly above it.

For details and documentation, refer to related sheet "Section Corner Record."

SECTION CORNER RECORD

BOONE COUNTY SURVEYOR'S OFFICE

NE 950-1100

State Plane grid coordinates NAD83 (CORS96):
 North: 1797330.93 East: 3182407.56 (U.S. survey feet)

Type of monument: Harrison, 4" disk 'Section Corner'
 Depth: four inches below adjacent gravel road surface

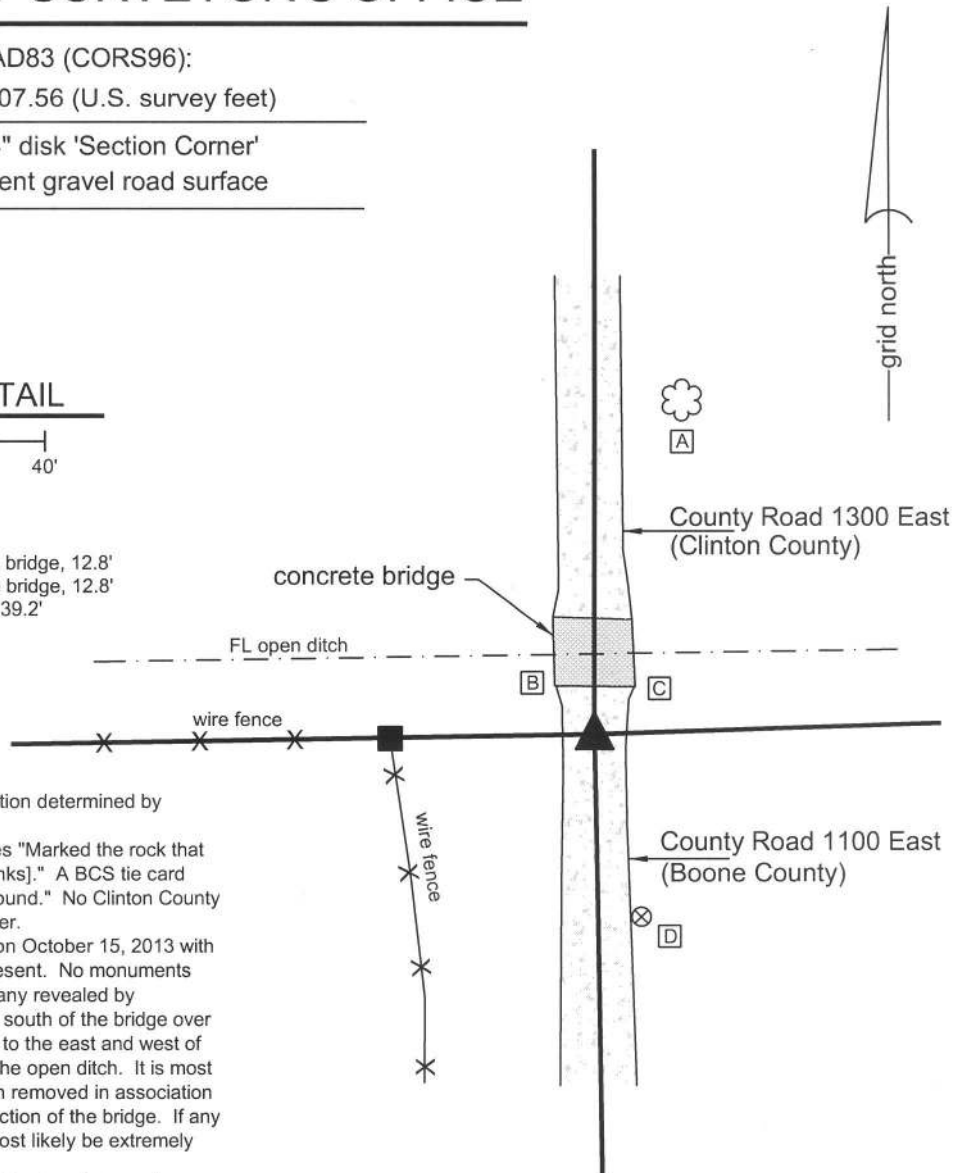
Indiana tie card references:

IN02_T20NR2E14_44
 IN02_T20NR2E13_36

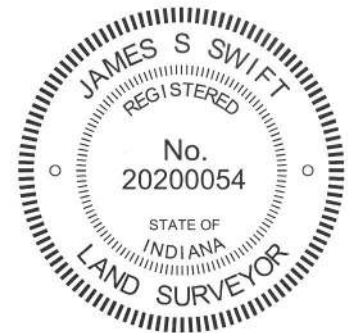
CORNER WITNESS DETAIL

SCALE 1" = 40'

- A - South edge, large tree, 67.5'
- B - S.E. corner, W. abutment, concrete bridge, 12.8'
- C - S.W. corner, E. abutment, concrete bridge, 12.8'
- D - Boone County witness mark, flush, 39.2'



The harrison monument was set at a position determined by distance ties shown on a previous record. A BCS record of September 9, 1872 states "Marked the rock that was set. A witness rock bears west 25 [links]." A BCS tie card dated August 22, 1974 states "no stone found." No Clinton County tie cards were found referencing this corner. Excavation at this corner was performed on October 15, 2013 with Dan Sheets, Clinton County Surveyor, present. No monuments were found prior to excavation, nor were any revealed by excavation. This corner falls immediately south of the bridge over a deep, open ditch. The adjacent ground to the east and west of the corner falls along the steep banks of the open ditch. It is most likely that a corner stone would have been removed in association with the dredging of the ditch and construction of the bridge. If any ancient monument did survive, it would most likely be extremely deep under the road. The position of the corner was established by the distance ties shown on the 1974 tie card and a harrison monument was set in this position. This corner was originally established in 1821.



Kenneth E. Hedge
 Kenneth E. Hedge, County Surveyor

James S. Swift
 James S. Swift, IN LS 20200054
 February 5, 2015

Sugar Creek Twp Clinton County	Section 14 T20N, R2E	Section 13 T20N, R2E
Marion Township Boone County	▲	