

SECTION CORNER RECORD

NE 900-550

BOONE COUNTY SURVEYOR'S OFFICE

State Plane grid coordinates NAD83 (CORS96):

North: 1793631.02 East: 3153237.75 (U.S. survey feet)

Type of monument: Harrison, 4" disk 'Section Corner'

Depth: One inch below adjacent road surface

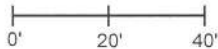
Indiana tie card references:

IN02_T20NR1E13_76

IN02_T20NR1E24_04

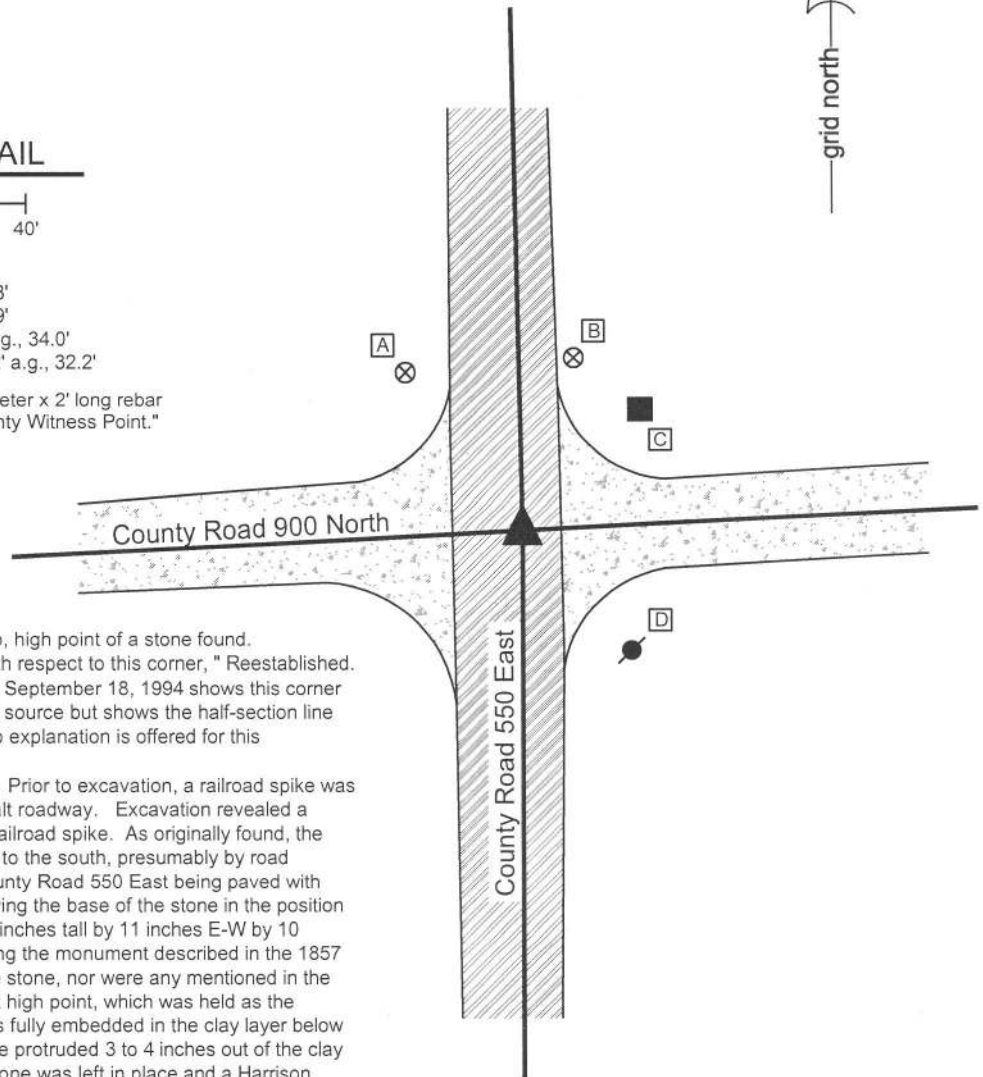
CORNER WITNESS DETAIL

SCALE 1" = 40'



- A - Boone County witness mark, flush, 41.3'
- B - Boone County witness mark, flush, 37.9'
- C - Mag nail set in W. side wood post, 2' a.g., 34.0'
- D - Mag nail set in N.W. side power pole, 2' a.g., 32.2'

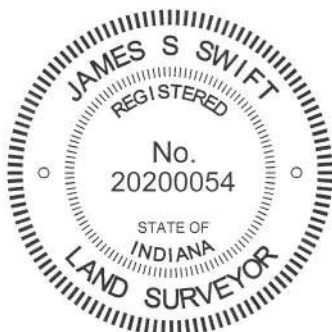
Boone County witness mark is a 3/8" diameter x 2' long rebar bearing a metal cap stamped "Boone County Witness Point."



The Harrison monument was set over the top, high point of a stone found. A BCS record of April 14-15, 1857 states, with respect to this corner, "Reestablished. Set Rock 11 by 14 in." A BCS tie card dated September 18, 1994 shows this corner as a railroad spike with no documentation of source but shows the half-section line as being 3 feet west of the railroad spike. No explanation is offered for this contradictory information.

This corner was excavated on June 5, 2014. Prior to excavation, a railroad spike was found at 2 inches deep in a hole in the asphalt roadway. Excavation revealed a stone found at 20 inches deep, north of the railroad spike. As originally found, the stone appeared to have been leaned slightly to the south, presumably by road grading equipment at some point prior to County Road 550 East being paved with asphalt. The stone was stood vertically, leaving the base of the stone in the position found. As stood up, the stone measured 14 inches tall by 11 inches E-W by 10 inches N-S. The stone was accepted as being the monument described in the 1857 record. No specific marks were found on the stone, nor were any mentioned in the record. As stood up, the stone had a distinct high point, which was held as the corner. When originally found, the stone was fully embedded in the clay layer below the road. Once stood up, the top of the stone protruded 3 to 4 inches out of the clay layer into the bottom of the road bed. The stone was left in place and a Harrison monument was set over the high point of the stone. The railroad spike, removed during excavation, had been 0.3 foot east and 1.2 feet south of the top high, point of the stone, as stood vertically.

This corner was originally established as a wood post in 1822.



Kenneth E. Hedge
Kenneth E. Hedge, County Surveyor

James S. Swift
James S. Swift, IN LS 20200054
March 27, 2015

Clinton Township

Section 13
T20N, R1E

Section 24
T20N, R1E

PHOTOGRAPHIC DOCUMENTATION

Date of photography: June 5, 2014

The stone as originally found, leaning towards the south



The stone stood up in a vertical position.



View from the north, looking across the stone (stood up and partially repacked in fill material) and south along County Road 550 East.



View from the east, looking across the stone (stood up and partially repacked in fill material) and west along County Road 900 North.



For details and documentation, refer to related sheet "Section Corner Record."

SECTION CORNER RECORD

NE 900-600

BOONE COUNTY SURVEYOR'S OFFICE

State Plane grid coordinates NAD83 (2011):

Corner 1: North: 1793764.62 East: 3155910.87 (U.S. survey feet)

Corner 2: North: 1793920.37 East: 3155909.67 (U.S. survey feet)

Corner 1: Harrison, 4" disk 'Section Corner', flush

Corner 2: 5/8" rebar with metal cap 'Boone County Surveyor, 14" deep

Indiana tie card references:

IN02_T20NR1E13_80 IN02_T20NR2E18_72

IN02_T20NR1E24_08 IN02_T20NR2E19_00

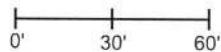
① S.E. Corner, Section 13
N.E. Corner, Section 24
T 20 N, R 1 E
Harrison Monument set

② S.W. Corner, Section 18
N.W. Corner, Section 19
T 20 N, R 2 E
5/8 inch rebar set, 14 inches deep

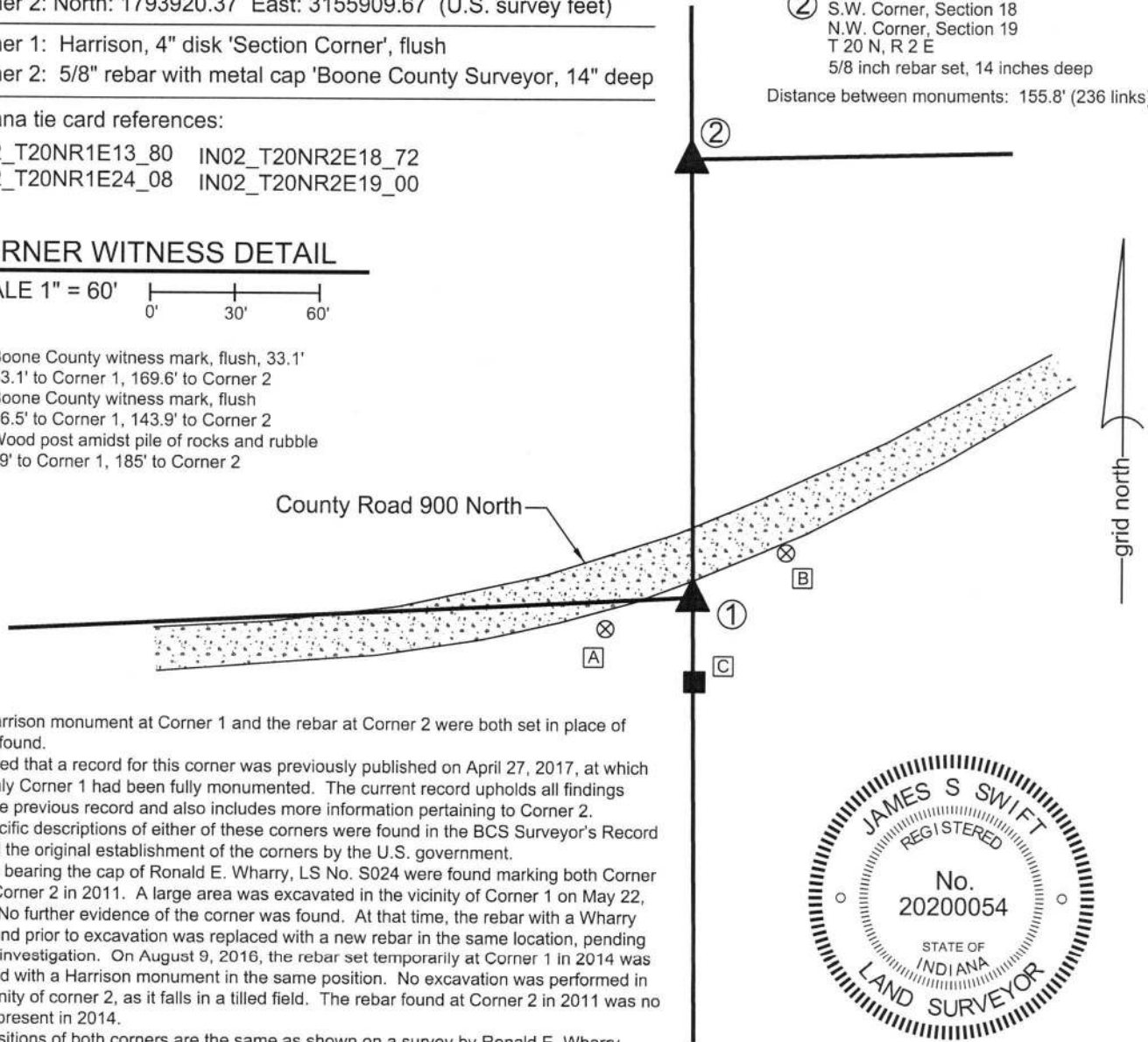
Distance between monuments: 155.8' (236 links)

CORNER WITNESS DETAIL

SCALE 1" = 60'



- A - Boone County witness mark, flush, 33.1'
33.1' to Corner 1, 169.6' to Corner 2
- B - Boone County witness mark, flush
36.5' to Corner 1, 143.9' to Corner 2
- C - Wood post amidst pile of rocks and rubble
29' to Corner 1, 185' to Corner 2



The Harrison monument at Corner 1 and the rebar at Corner 2 were both set in place of rebars found.

It is noted that a record for this corner was previously published on April 27, 2017, at which time only Corner 1 had been fully monumented. The current record upholds all findings from the previous record and also includes more information pertaining to Corner 2.

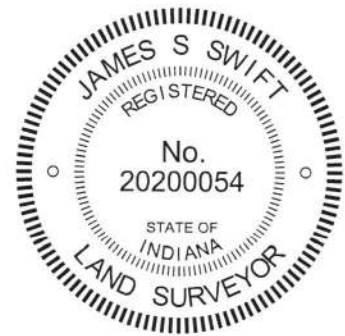
No specific descriptions of either of these corners were found in the BCS Surveyor's Record beyond the original establishment of the corners by the U.S. government.

Rebars bearing the cap of Ronald E. Wharry, LS No. S024 were found marking both Corner 1 and Corner 2 in 2011. A large area was excavated in the vicinity of Corner 1 on May 22, 2014. No further evidence of the corner was found. At that time, the rebar with a Wharry cap found prior to excavation was replaced with a new rebar in the same location, pending further investigation. On August 9, 2016, the rebar set temporarily at Corner 1 in 2014 was replaced with a Harrison monument in the same position. No excavation was performed in the vicinity of corner 2, as it falls in a tilled field. The rebar found at Corner 2 in 2011 was no longer present in 2014.

The positions of both corners are the same as shown on a survey by Ronald E. Wharry recorded as Instrument 201100003587 in the Boone County Surveyor's Office.

The Wharry survey holds the record closing distance of 236 links between the corners, which also fits with the evidence of the roadways to the east and west of the corners. This distance yields a reasonable position for Corner 2. On April 9, 2018, a rebar with a metal cap stamped "Boone County Surveyor" was set in the same position as the rebar originally found in 2011 marking Corner 2. The rebar was set at 14 inches deep to avoid disturbance by agricultural equipment.

Corner 1 was originally established as a wood post in 1819. Corner 2 was originally established as a wood post in 1821.



James S. Swift

James S. Swift, IN LS 20200054

Kenneth E. Hedge

Kenneth E. Hedge, County Surveyor

April 18, 2018

Marion Township	Clinton Township
Section 13 T20N, R1E	Section 18 T20N, R2E
Section 24 T20N, R1E	Section 19 T20N, R2E

SECTION CORNER RECORD

NE 950-500

BOONE COUNTY SURVEYOR'S OFFICE

State Plane grid coordinates NAD83 (2011):

North: 1796128.22 East: 3150551.16 (U.S. survey feet)

Type of monument: Harrison, 4" disk 'Section Corner'

Depth: Two inches above adjacent ground

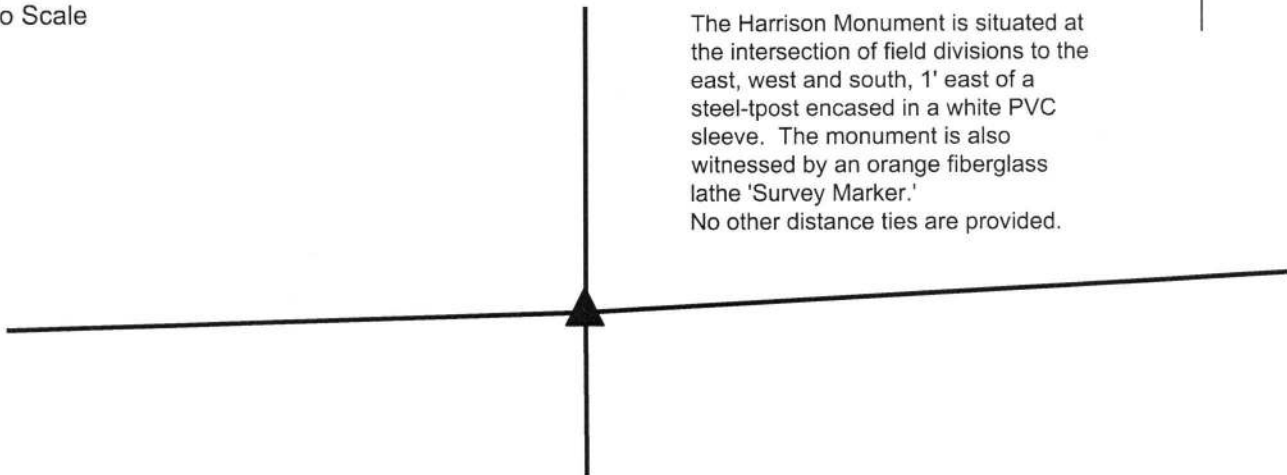
Indiana tie card references:

IN02_T20NR1E14_44 IN02_T20NR1E13_36



CORNER WITNESS DETAIL

No Scale



The Harrison Monument is situated at the intersection of field divisions to the east, west and south, 1' east of a steel-tpost encased in a white PVC sleeve. The monument is also witnessed by an orange fiberglass lathe 'Survey Marker.' No other distance ties are provided.


The Harrison Monument was set over the remains of a cedar post found.

A BCS record of April 14-15, 1857 states, with respect to this corner, "Reestablished. Set Rock 7x10 in." No recent BCS tie cards were found referencing this corner.

Excavation was performed at this corner on April 10, 2018. Prior to excavation, a steel t-post with a white PVC sleeve was found at the intersection of field divisions to the east, west and south. A 5/8 inch rebar was found at the base of the t-post. The rebar was leaning significantly and it is not obvious whether the rebar is intended to mark the corner or is stabilizing the t-post. No cap or flagging was found attached to the rebar. The position of the t-post and field division intersection work well with the relative positions of the corner 1/2 mile to the west (see corner NE 950-450) and a wood corner post providing evidence of the 1/16 corner 1/4 mile west of the subject corner. A stone which measures 10x7x6 inches, matching the dimensions described in the 1857 record, was found sitting on the ground at the west edge of the t-post. The stone was not embedded in the ground. Excavation and probing revealed the remains of an 8 inch by 8 inch cedar post found 1 foot deep, approximately 1 foot east of the t-post. The size and material of the post (the cedar wood was readily identifiable by color and smell) indicate that this was once a corner post. It is noted that the post 1/4 mile west is equidistant between the corner 1/2 mile west and the remains of the post, though slightly north of a straight line connecting the two corners. No other reliable evidence of the corner was found. With the found stone lying on top of the ground, easily moved, the remains of the cedar post were accepted as the best available evidence of the original position of the corner. Three 1/2 inch rebars were driven around the post, the rebars and the top portion of the post was anchored in concrete, and a Harrison monument was set directly over the top of the post.

This corner was originally established as a wood post in 1822.

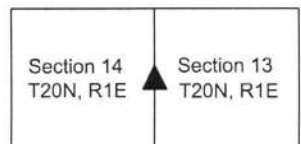

Kenneth E. Hedge, County Surveyor


James S. Swift, IN LS 20200054
April 18, 2018



Kirclin Township
Clinton County

Clinton Township
Boone County



SECTION CORNER RECORD

NE 950-600

BOONE COUNTY SURVEYOR'S OFFICE

Information for Corner One only

State Plane grid coordinates NAD83 (2011):

North: 1796415.82 East: 3155890.38 (U.S. survey feet)

Type of monument: Harrison, 4" disk 'Section Corner'

Depth: One inch above adjacent ground

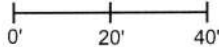
Indiana tie card references:

IN02_T20NR1E13_44 IN02_T20NR2E18_36



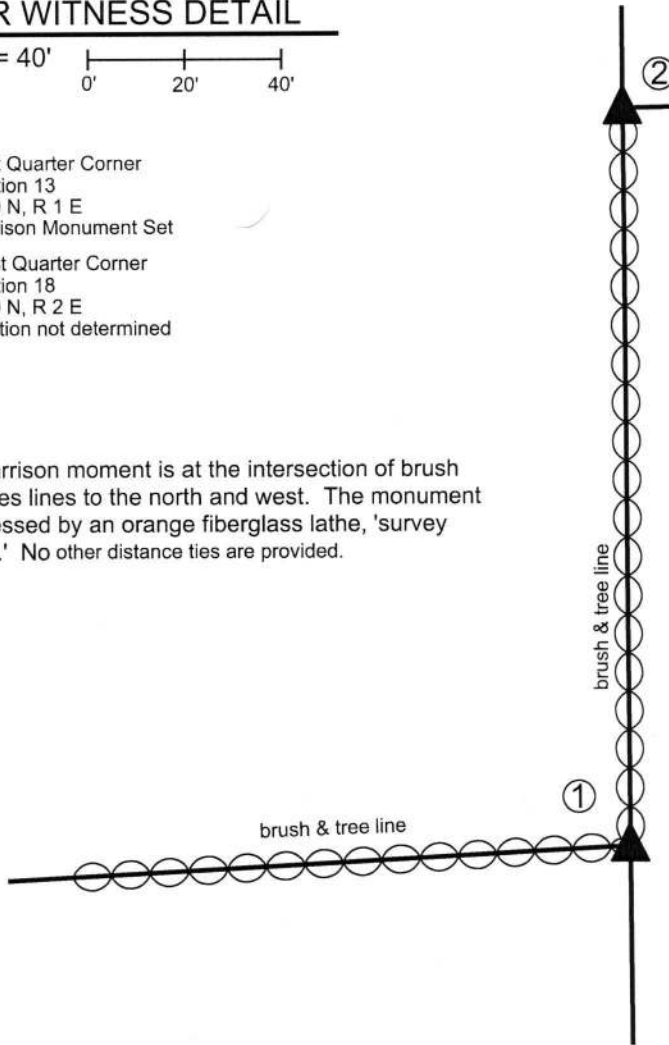
CORNER WITNESS DETAIL

SCALE 1" = 40'



- ① East Quarter Corner
Section 13
T 20 N, R 1 E
Harrison Monument Set
- ② West Quarter Corner
Section 18
T 20 N, R 2 E
Position not determined

The Harrison monument is at the intersection of brush and trees lines to the north and west. The monument is witnessed by an orange fiberglass lathe, 'survey marker.' No other distance ties are provided.



The Harrison monument was set in place of a rebar found. A BCS record dated April 14-15, 1857 states, with respect to this corner, "Reestablished. Set Rock 17.12 in." This corner was excavated on March 14, 2018. Prior to excavation, a rebar with plastic cap stamped REW was found at the intersection of brush and tree lines to the north and west, generally in line with standing fence to the west which begins approximately 75 feet west of the corner, and in-line with posts and fencing found in the vicinity of Corner 2. The rebar is shown as being set at Corner 1 on a survey by Ronald E. Wharry, LS #S0420 recorded as Instrument 201100003587 in the Office of the Boone County Recorder.

Probing and manual excavation in the immediate vicinity of the rebar yielded no further evidence of the corner. No fencing was found at the corner and it appears that the area has been cleared substantially in the recent past. The trees and brush to the north and west do not appear to be old. It is believed that the stone mentioned in the 1857 record was most likely removed previously.

The rebar with the Wharry cap was accepted as marking the corner and was replaced with a Harrison Monument in the same position.


Corner 2 is not an original corner of the PLSS. The exact position of corner 2 was not determined, but is shown on the aforementioned Wharry survey.

Corner 1 was originally established as a wood post in 1819.

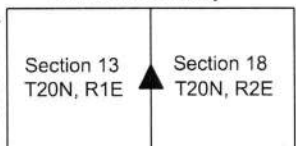

Kenneth E. Hedge, County Surveyor



Kirklin Township
Clinton County


James S. Swift, IN LS 20200054
April 3, 2018

Clinton Twp
Boone Cnty



Marion Twp
Boone Cnty