

SECTION CORNER RECORD

SW 200-600

BOONE COUNTY SURVEYOR'S OFFICE

- ① S.E. Corner, Section 12
N.E. Corner, Section 13
T 18 N, R 2 W
- ② S.W. Corner, Section 7
N.W. Corner, Section 18
T 18 N, R 1 W

Distance between monuments: 66.9'
Original federal closing distance:
101 links (66.6')

State Plane grid coordinates NAD83 (2011):

Corner 1: North: 1734791.95 East: 3093215.64 (U.S. survey feet)

Corner 2: North: 1734858.83 East: 3093215.14 (U.S. survey feet)

Type of monument: Harrison, 4" disk 'Section Corner'

Depth: One inch deep (Corner 1) six inches deep (Corner 2)

Indiana tie card references:

IN02_T18NR2W12_80 IN02_T18NR1W07_72

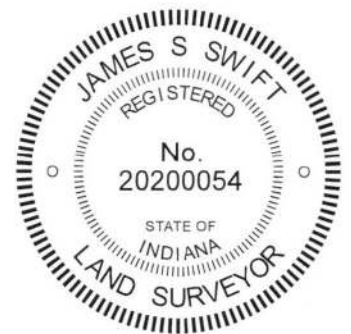
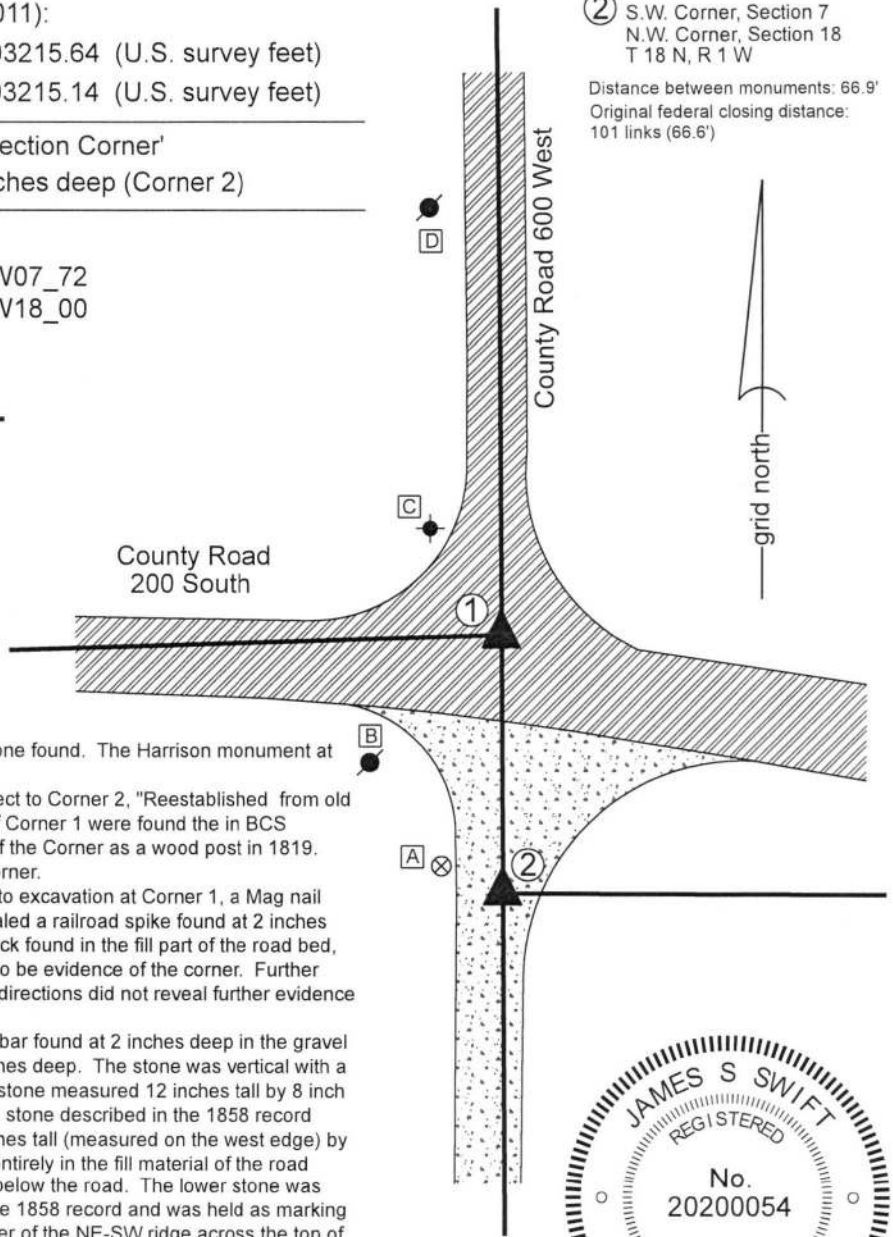
IN02_T18NR2W13_08 IN02_T18NR1W18_00

CORNER WITNESS DETAIL

SCALE 1" = 50'

- A - Boone County witness mark, flush
61.9' to Corner 1, 17.5' to Corner 2
- B - Mag nail set in E. side power pole, 2' a.g.
45.9' to Corner 1, 47.3' to Corner 2
- C - East edge, stop sign post, 2' a.g.
32.4' to Corner 1, 96.0' to Corner 2
- D - Mag nail set in S.E. side power pole, 2' a.g.
111.2' to Corner 1, 117.7' to Corner 2

The Harrison monument at Corner 2 was set over a stone found. The Harrison monument at Corner 1 was set at a calculated position. A BCS record of October 15-16, 1858 states with respect to Corner 2, "Reestablished from old witness tree. Rock 13x17." No specific descriptions of Corner 1 were found in BCS Surveyor's Record beyond the original establishment of the Corner as a wood post in 1819. No recent BCS tie cards were found referencing this corner. Both corners were excavated on June 28, 2018. Prior to excavation at Corner 1, a Mag nail was found at the surface of the road. Excavation revealed a railroad spike found at 2 inches deep, 0.1 foot east and 0.05 foot north of the nail. A rock found in the fill part of the road bed, slightly northwest of the railroad spike, did not appear to be evidence of the corner. Further excavation of an area extending 2.5 feet in all cardinal directions did not reveal further evidence of the corner. Excavation at Corner 2 began at a 1/2 inch diameter rebar found at 2 inches deep in the gravel roadway. Excavation revealed a stone found at 14 inches deep. The stone was vertical with a distinct high point, oriented in cardinal directions. The stone measured 12 inches tall by 8 inch N-S by 3 inches E-W. The stone was removed and the stone described in the 1858 record was found directly below. This stone measured 17 inches tall (measured on the west edge) by 13 inches NE-SW. The upper stone was found to be entirely in the fill material of the road while the lower stone was embedded in the clay layer below the road. The lower stone was accepted as being the same monument described in the 1858 record and was held as marking Corner 2. A Harrison monument was set over the center of the NE-SW ridge across the top of the rock. The 1/2 inch rebar, removed during excavation, had been 1.9 feet west and 0.9 foot north of the point held as the corner. The position of Corner 1 was established at the intersection of a line extended from the standard corner 1/2 mile south (see Corner SW 250-600) through the Harrison monument set at Corner 2 and a line extended from the corner 1/2 mile west (see Corner SW 200-650) through the found railroad spike near Corner 1. A Harrison monument was set at this point of intersection on September 4, 2018. The railroad spike, removed during excavation, had been 1.9 feet westerly of this position. It is noted that the closing distance reported in the original federal notes for these corners is 101 links (66.6 feet) and that the two corners were set at 66.9 feet. Corner 1 was originally established as a wood post in 1819. Corner 2 was established as a wood post in 1820.



Jefferson
Township

Section 12 T18N, R2W	Section 7 T18N, R1W
Section 13 T18N, R2W	Section 18 T19N, R1W

Jackson
Township

James S. Swift
James S. Swift, IN LS 20200054

Kenneth E. Hedge
Kenneth E. Hedge, County Surveyor

September 5, 2018

SECTION CORNER RECORD

SW 200-650

BOONE COUNTY SURVEYOR'S OFFICE

State Plane grid coordinates NAD83 (2011):

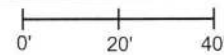
North: 1734778.83 East: 3090589.54 (U.S. survey feet)

Type of monument: Harrison, 4" disk 'Section Corner'

Depth: One inch below adjacent road surface

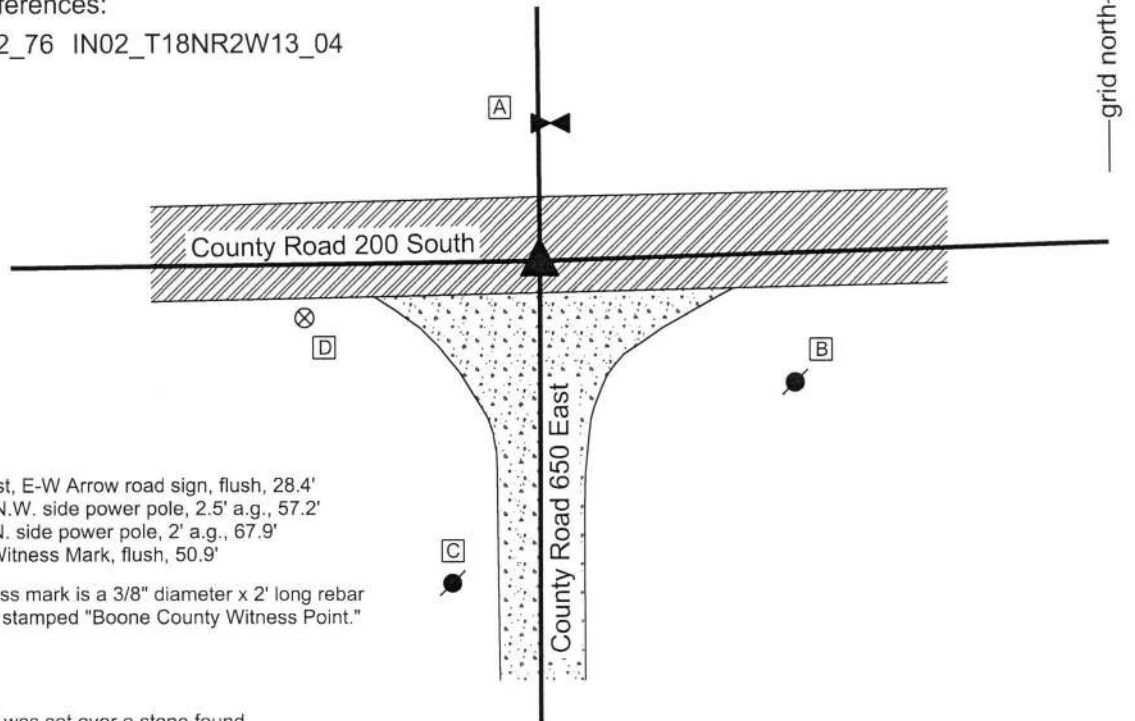
CORNER WITNESS DETAIL

SCALE 1" = 40'



Indiana tie card references:

IN02_T18NR2W12_76 IN02_T18NR2W13_04



- A - W. Edge, W. post, E-W Arrow road sign, flush, 28.4'
- B - Mag Nail set in N.W. side power pole, 2.5' a.g., 57.2'
- C - Mag nail set in N. side power pole, 2' a.g., 67.9'
- D - Boone County Witness Mark, flush, 50.9'

Boone County witness mark is a 3/8" diameter x 2' long rebar bearing a metal cap stamped "Boone County Witness Point."

The Harrison Monument was set over a stone found.

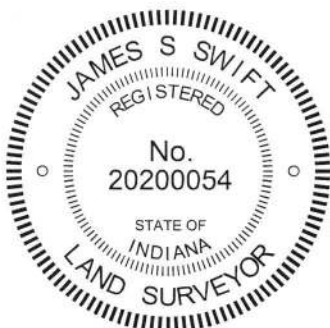
A BCS record of May 9-10, 1870 states, with respect to this corner, "Reest. from tree and stump. Beech dead, Elm stp. rotten. Set the rock suppose mkd by Taylor, which was found out of the ground." The specific reference to the corner as set by Taylor was not found in the BCS Surveyor's Record, though it is noted that H. Taylor, Boone County Surveyor, was responsible for records of corners in Section 12 dated March 20, 1853 and records for corners in Section 13 dated October 3, 1854.

No recent BCS tie cards were found referencing this corner. No recorded surveys were found which specifically address this corner.

Excavation was performed at this corner on July 6, 2018. Prior to excavation, a railroad spike was found at 4 inches deep at the intersection of County Roads 200 South and 650 West. No source data was found for the railroad spike. Excavation centered on the position of the railroad spike revealed a stone found at 24 inches deep, slightly north of the railroad spike. The stone was found to be vertical and embedded in the clay layer below the road bed with the top of the stone coincident with the bottom of the road bed. With the top 10 inches of the stone exposed, it measured 8 inches N-S by 12 inches E-W. The north and south sides were vertical while the east and west sides were sloping. With the top 10 inches of the stone exposed, it remained entirely stable in the clay, indicating that it was yet taller. The stone had a distinct high point but no visible marks due to the rough surface of the rock. The position of the stone fits well with local evidence in the form of the intersecting roadways. The position of the stone also fit well with measurements reported in the 1870 record with respect to the corners to the east and west. It is noted that the north line of the northwest quarter and north line of the northeast quarter are not balanced, with the westerly line being approximately 17 feet longer than the easterly line. This imbalance matches closely the proportional imbalance reported in the 1870 record. The stone is approximately 25 feet south of a straight line between the northeast and northwest corners of section 13, but fits well with the east-west roadway of County Road 200 South and fits with the distances noted in the 1870 record, as noted above.

The stone was accepted as providing the best available evidence of the corner. A Harrison monument was set over the top, high point of the stone. The railroad spike, removed during excavation, had been 1.2 feet south of the top, high point of the stone.

This corner was originally established as a wood post in 1820.



Kenneth E. Hedge
Kenneth E. Hedge, County Surveyor

James S. Swift
James S. Swift, IN LS 20200054
August 1, 2018

Jefferson
Township

Section 12
T18N, R2W

Jackson
Township

Section 13
T18N, R2W

SECTION CORNER RECORD

SW 200-700

BOONE COUNTY SURVEYOR'S OFFICE

State Plane grid coordinates NAD83 (2011):
 North: 1734748.27 East: 3087946.00 (U.S. survey feet)

Type of monument: Harrison, 4" disk 'Section Corner'
 Depth: One inch below adjacent road surface

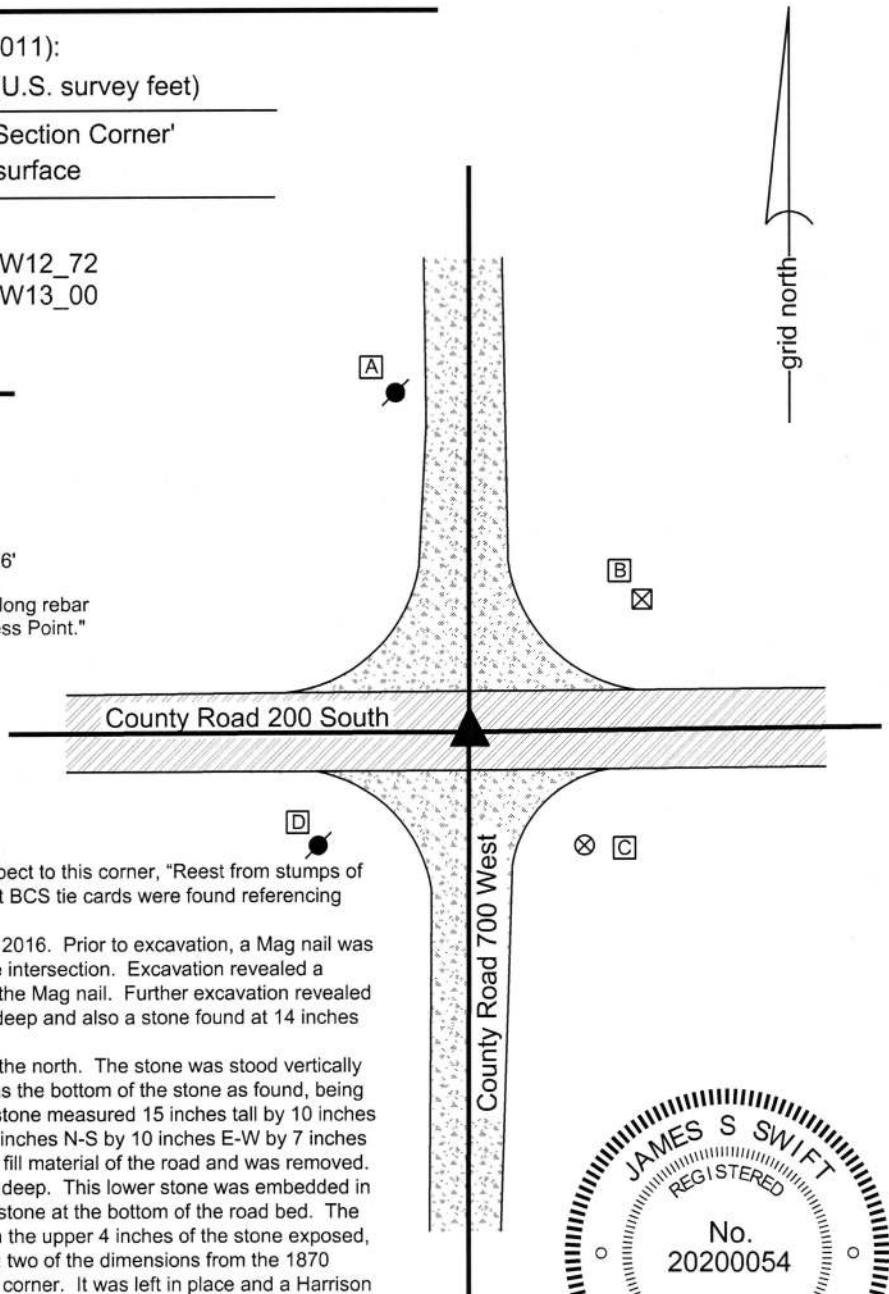
Indiana tie card references:
 IN02_T18NR2W11_80 IN02_T18NR2W12_72
 IN02_T18NR2W13_08 IN02_T18NR2W13_00

CORNER WITNESS DETAIL

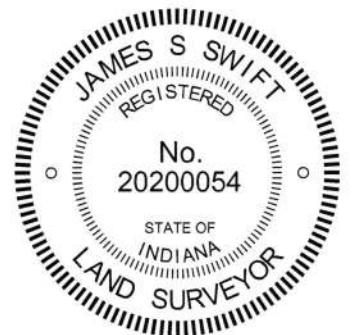
SCALE 1" = 50'

- A - Mag nail set in E. side power pole, 3' a.g., 89.7'
- B - S.W. corner INDOT RW monument, flush, 53.1'
- C - Boone County witness mark, flush, 42.0'
- D - Mag nail set in N.E. side power pole, 2' a.g., 46.6'

Boone County witness mark is a 3/8" diameter x 2' long rebar bearing a metal cap stamped "Boone County Witness Point."



The Harrison monument was set over a stone found.
 A BCS record dated May 9-10, 1870 states, with respect to this corner, "Reest from stumps of both trees. Set a rock, 12x8x6 marked +." No recent BCS tie cards were found referencing this corner.
 Excavation was performed at this corner On July 20, 2016. Prior to excavation, a Mag nail was found at 1 inch deep in the approximate center of the intersection. Excavation revealed a railroad spike found at 4 inches deep, directly below the Mag nail. Further excavation revealed a boat spike with a 12 inch shaft found at 14 inches deep and also a stone found at 14 inches deep.
 As found, the stone appeared to be leaning towards the north. The stone was stood vertically and a distinct etched "+" mark was found on what was the bottom of the stone as found, being the vertical north side with the stone stood up. The stone measured 15 inches tall by 10 inches E-W by 7 inches N-S as stood up, and measured 15 inches N-S by 10 inches E-W by 7 inches tall as originally found. The stone was located in the fill material of the road and was removed. Another stone was found directly below at 22 inches deep. This lower stone was embedded in the clay layer below the road bed with the top of the stone at the bottom of the road bed. The stone has a distinct etched "+" mark on the top. With the upper 4 inches of the stone exposed, it measured 6 inches N-S by 8 inches E-W, matching two of the dimensions from the 1870 record. This stone was accepted as the marking the corner. It was left in place and a Harrison monument was set over the etched mark on the top of the stone.
 The Mag nail, railroad spike, boat spike and upper stone were all removed during excavation. The nail and railroad spike had been 1.7 feet north and 0.9 foot west of the mark on the lower stone and the boat spike had been 1.1 feet north and 0.2 foot east of the mark.
 This corner was originally established as a wood post in 1820.



Kenneth E. Hedge
 Kenneth E. Hedge, County Surveyor

James S. Swift
 James S. Swift, IN LS 20200054
 March 23, 2017

Jefferson Township	Section 11 T18N, R2W	Section 12 T18N, R2W
Jackson Township	Section 14 T18N, R2W	Section 13 T18N, R2W

PHOTOGRAPHIC DOCUMENTATION

Date of photography: July 20, 2016

The upper stone as it was originally exposed.



View from the east, looking across the upper stone (stood vertical) and west along County Road 200 South.



For details and documentation, refer to related sheet "Section Corner Record."

The lower stone exposed.



View from the north looking across the upper stone (stood vertical) and south long County Road 700 West.



SECTION CORNER RECORD

SW 250-600

BOONE COUNTY SURVEYOR'S OFFICE

State Plane grid coordinates NAD83 (2011):

Corner 1: North: 1732211.77 East: 3093235.96 (U.S. survey feet)

Corner 2: North: 1732153.45 East: 3093236.35 (U.S. survey feet)

Type of monument: Harrison, 4" disk 'Section Corner'

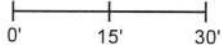
Depth: four to six inches below adjacent gravel road surface

Indiana tie card references:

IN02_T18NR2W13_44 IN02_T18NR1W18_36

CORNER WITNESS DETAIL

SCALE 1" = 30'



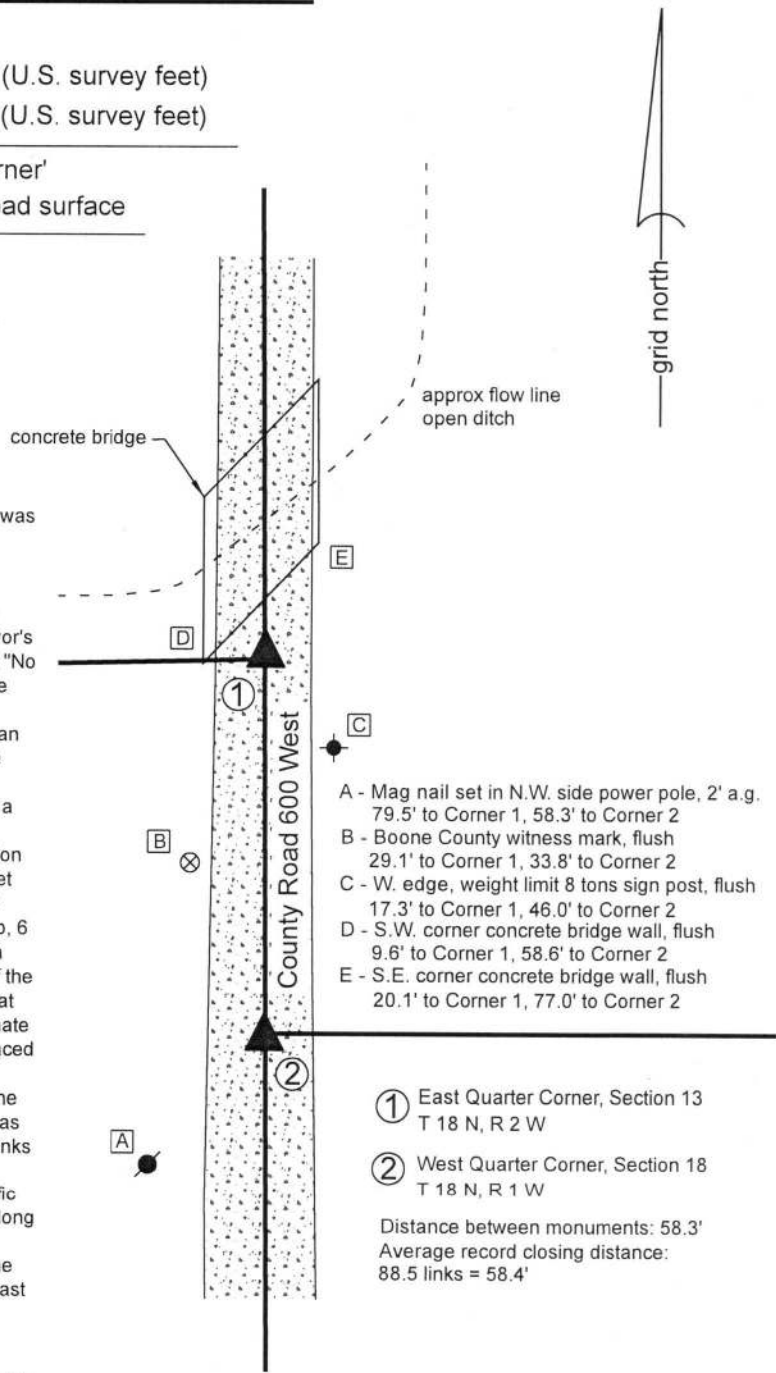
The Harrison monument at Corner 2 was set in place of a vertical section of railroad rail found. The Harrison monument at Corner 1 was set on the range line, as defined by Corner 2, adjacent to a rebar found.

A BCS record dated October 15-16, 1858 states, with respect to Corner 2, "Established from cor to sec 13, R2W. Rock 10x26." No specific descriptions of Corner 1 were found in the BCS Surveyor's Record. A BCS tie card dated October 5, 1971 shows Corner 2 as "No stone" and an entry in the BCS Surveyor's Record of the same date states "No stone - Railroad rail set."

It is noted that Corner 1 falls at the southern edge of a bridge over an open ditch and it is considered unlikely that ancient evidence of the corner remains present.

Corner 2 was excavated on August 21, 2018. Prior to excavation, a vertical section of railroad rail was found at 7 inches deep in agreement with distance ties shown on the 1971 tie card. Excavation of an area extending 4 feet north, 4 feet south, 3 feet east and 3 feet west of the found section of rail revealed no further evidence of the corner. Excavation was performed to a minimum of 14 inches deep, 6 inches into the clay layer found below the road bed. The rail fit with local evidence of the corner in the form of the being in the center of the north-south roadway and being in line with evidence of occupation at the east edge of the road and also fits well with distances to proximate corners. The rail was accepted as marking Corner 2 and was replaced with a Harrison monument in the same position. Substantial excavation was not performed at Corner 1 due to the presence of the bridge. A 5/8 inch rebar with a red plastic cap (markings illegible) was found at a position very near the average closing distance of 88.5 links (computed with respect to the original federal notes for the section corners 1/2 mile north and 1/2 mile south, respectively). The specific position of Corner 1 was established on the range line as defined along the prolongation of the line connecting Corner 2 and the standard corner approximately 1/2 mile south (see Corner SW 300-600) at the same northerly position as the found rebar. This point is 0.2 foot east of the position of the rebar. On August 22, 2018, the rebar was removed and a Harrison monument was set at Corner 1 at the calculated position described above.

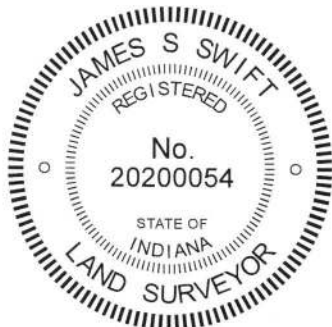
Corner 1 was originally established as a wood post in 1819. Corner 2 is not an original corner of the PLSS.



- A - Mag nail set in N.W. side power pole, 2' a.g. 79.5' to Corner 1, 58.3' to Corner 2
- B - Boone County witness mark, flush 29.1' to Corner 1, 33.8' to Corner 2
- C - W. edge, weight limit 8 tons sign post, flush 17.3' to Corner 1, 46.0' to Corner 2
- D - S.W. corner concrete bridge wall, flush 9.6' to Corner 1, 58.6' to Corner 2
- E - S.E. corner concrete bridge wall, flush 20.1' to Corner 1, 77.0' to Corner 2

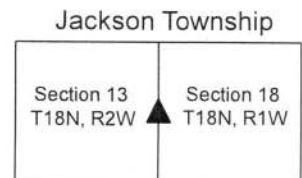
- ① East Quarter Corner, Section 13 T 18 N, R 2 W
- ② West Quarter Corner, Section 18 T 18 N, R 1 W

Distance between monuments: 58.3'
Average record closing distance: 88.5 links = 58.4'



Kenneth E. Hedge
Kenneth E. Hedge, County Surveyor

James S. Swift
James S. Swift, IN LS 20200054
August 29, 2018



SECTION CORNER RECORD

BOONE COUNTY SURVEYOR'S OFFICE

SW 250-700

State Plane grid coordinates NAD83 (2011):

North: 1732099.63 East: 3087937.32 (U.S. survey feet)

Type of monument: Harrison, 4" disk 'Section Corner'

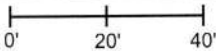
Depth: Six inches below adjacent gravel road surface

Indiana tie card references:

IN02_T18NR2W14_44 IN02_T18NR2W13_36

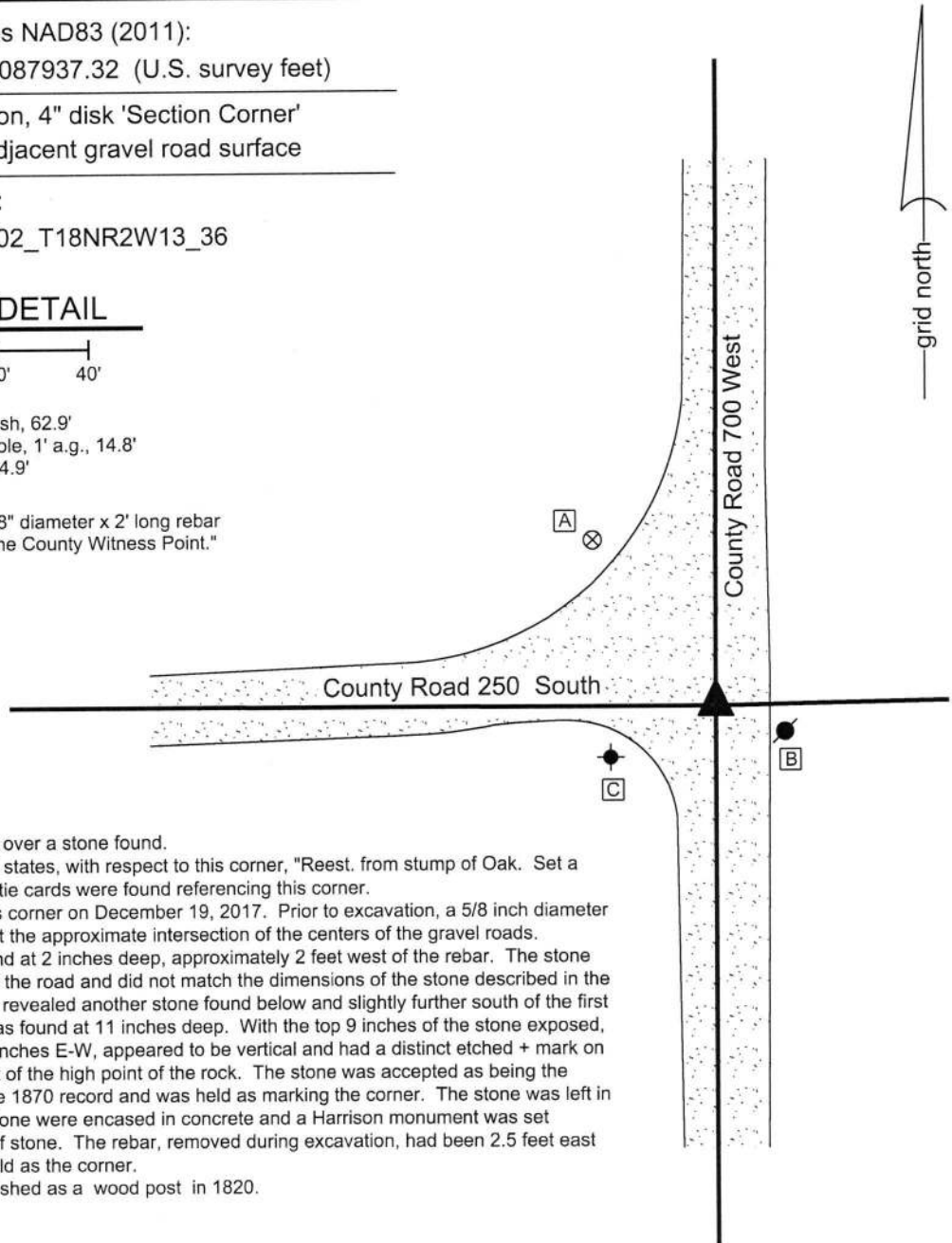
CORNER WITNESS DETAIL

SCALE 1" = 40'



- A - Boone County witness mark, flush, 62.9'
- B - Mag nail set in W. side power pole, 1' a.g., 14.8'
- C - S. edge, stop sign post, flush, 24.9'

Boone County witness mark is a 3/8" diameter x 2' long rebar bearing a metal cap stamped "Boone County Witness Point."



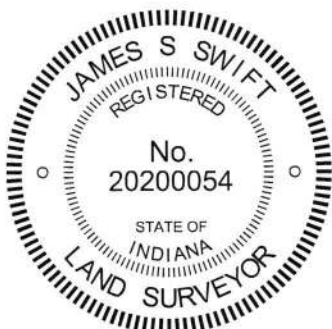
The Harrison monument was set over a stone found.

A BCS record of May 9-10, 1870 states, with respect to this corner, "Reest. from stump of Oak. Set a rock 15,14,9 +." No recent BCS tie cards were found referencing this corner.

Excavation was performed at this corner on December 19, 2017. Prior to excavation, a 5/8 inch diameter rebar was found 2 inches deep at the approximate intersection of the centers of the gravel roads.

Excavation revealed a stone found at 2 inches deep, approximately 2 feet west of the rebar. The stone was situated in the fill material of the road and did not match the dimensions of the stone described in the 1870 record. Further excavation revealed another stone found below and slightly further south of the first found stone. The lower stone was found at 11 inches deep. With the top 9 inches of the stone exposed, it measured 12 inches N-S by 9 inches E-W, appeared to be vertical and had a distinct etched + mark on the top of the stone, slightly west of the high point of the rock. The stone was accepted as being the same monument described in the 1870 record and was held as marking the corner. The stone was left in place. The top 9 inches of the stone were encased in concrete and a Harrison monument was set directly over the top, high point of stone. The rebar, removed during excavation, had been 2.5 feet east and 0.6 foot north of the point held as the corner.

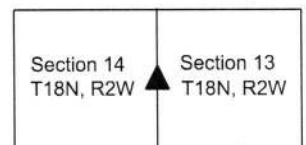
This corner was originally established as a wood post in 1820.



Kenneth E. Hedge
 Kenneth E. Hedge, County Surveyor

James S. Swift
 James S. Swift, IN LS 20200054
 January 31, 2018

Jackson Township



SECTION CORNER RECORD

BOONE COUNTY SURVEYOR'S OFFICE

SW 300-600

Data for Corner 1 only:

State Plane grid coordinates NAD83 (2011):

North: 1729563.81 East: 3093253.40 (U.S. survey feet)

Type of monument: Harrison, 4" disk 'Section Corner'

Depth: Six inches below adjacent gravel road surface

Indiana tie card references:

IN02_T18NR2W13_80 IN02_T18NR1W18_72

IN02_T18NR2W24_08 IN02_T18NR1W19_00

CORNER WITNESS DETAIL

SCALE 1" = 60'

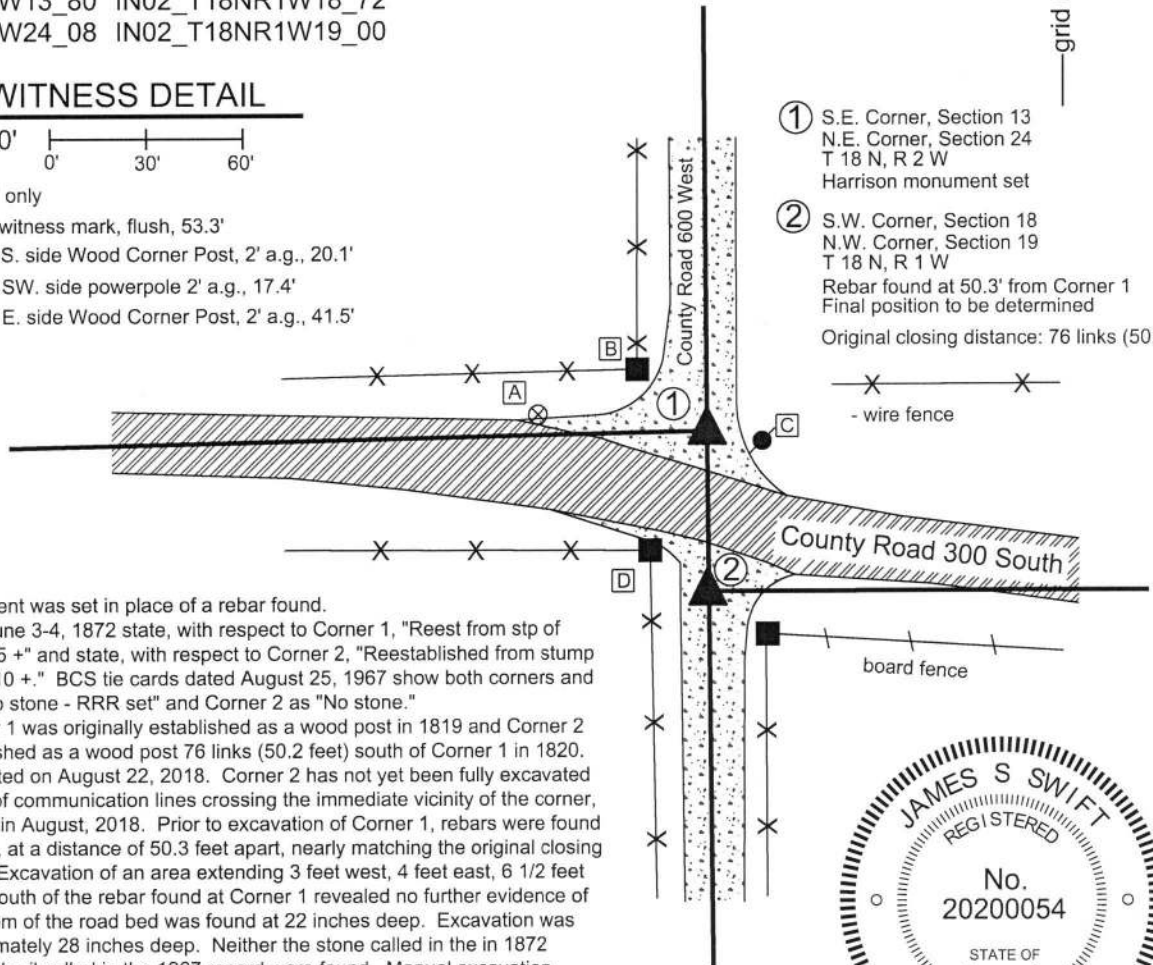
All ties to Corner 1 only

A - Boone County witness mark, flush, 53.3'

B - Mag nail set in S. side Wood Corner Post, 2' a.g., 20.1'

C - Mag nail set in SW. side powerpole 2' a.g., 17.4'

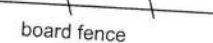
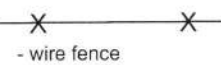
D - Mag nail set in E. side Wood Corner Post, 2' a.g., 41.5'



① S.E. Corner, Section 13
N.E. Corner, Section 24
T 18 N, R 2 W
Harrison monument set

② S.W. Corner, Section 18
N.W. Corner, Section 19
T 18 N, R 1 W
Rebar found at 50.3' from Corner 1
Final position to be determined

Original closing distance: 76 links (50.2')



The Harrison monument was set in place of a rebar found. BCS records dated June 3-4, 1872 state, with respect to Corner 1, "Reest from stp of Beech, set rock 10 7 5 +'" and state, with respect to Corner 2, "Reestablished from stump of Lynn, Rock 16 10 10 +." BCS tie cards dated August 25, 1967 show both corners and show Corner 1 as "No stone - RRR set" and Corner 2 as "No stone." It is noted that Corner 1 was originally established as a wood post in 1819 and Corner 2 was originally established as a wood post 76 links (50.2 feet) south of Corner 1 in 1820. Corner 1 was excavated on August 22, 2018. Corner 2 has not yet been fully excavated due to the presence of communication lines crossing the immediate vicinity of the corner, as marked by IUPPS in August, 2018. Prior to excavation of Corner 1, rebars were found marking both corners, at a distance of 50.3 feet apart, nearly matching the original closing distance of 76 links. Excavation of an area extending 3 feet west, 4 feet east, 6 1/2 feet north and 3 1/2 feet south of the rebar found at Corner 1 revealed no further evidence of the corner. The bottom of the road bed was found at 22 inches deep. Excavation was performed to approximately 28 inches deep. Neither the stone called in the in 1872 record nor the railroad rail called in the 1967 record were found. Manual excavation around the rebar at Corner 2 revealed no further evidence. Though it was expected that vertical sections of railroad rail would be found at both corners, rails were not found at either corner. It appears that significant grading or roadwork has occurred at this intersection since 1967. It is noted that the positions of the two rebars fit reasonably well with the local evidence of the corners in the form the physical roadways in all four cardinal directions. It is also noted that the distance tie references from the 1967 plans appear to be gone and that most of the various fencing appears to be more recent than 1967. The found rebar at Corner 1 was held as marking the corner and was replaced with a Harrison monument. The rebar at Corner 2 was left in place, 50.3 feet south of Corner 1. The final position of Corner 2 will be established after the position of the east quarter corner of Section 24 is established.



Jackson Township

Section 13 T18N, R2W	Section 18 T18N, R1W
Section 24 T18N, R2W	Section 19 T18N, R1W

Kenneth E. Hedge
Kenneth E. Hedge, County Surveyor

James S. Swift
James S. Swift, IN LS 20200054

February 6, 2019

SECTION CORNER RECORD

SW 300-650

BOONE COUNTY SURVEYOR'S OFFICE

State Plane grid coordinates NAD83 (2011):

North: 1729504.08 East: 3090595.55 (U.S. survey feet)

Type of monument: Harrison, 4" disk 'Section Corner'

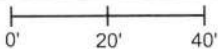
Depth: One inch below adjacent road surface

Indiana tie card references:

IN02_T18NR2W13_76 IN02_T18NR2W24_04

CORNER WITNESS DETAIL

SCALE 1" = 40'

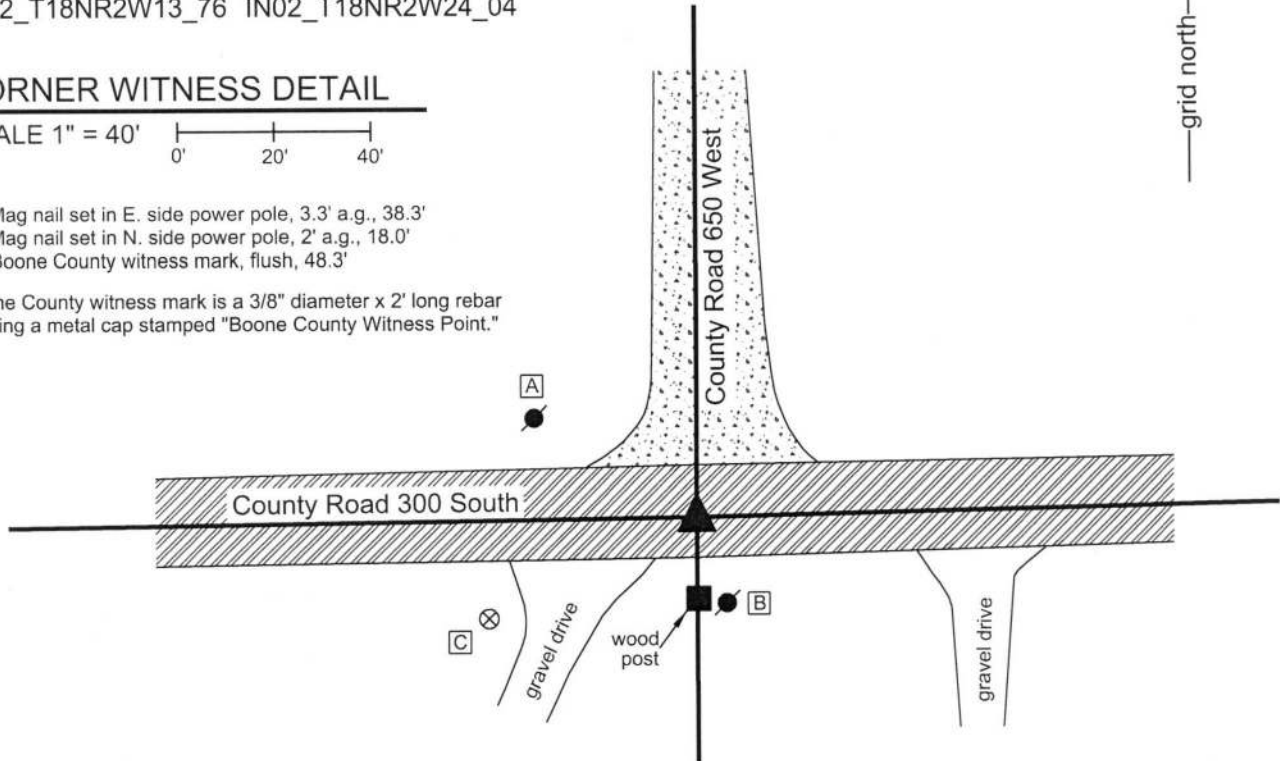


A - Mag nail set in E. side power pole, 3.3' a.g., 38.3'

B - Mag nail set in N. side power pole, 2' a.g., 18.0'

C - Boone County witness mark, flush, 48.3'

Boone County witness mark is a 3/8" diameter x 2' long rebar bearing a metal cap stamped "Boone County Witness Point."

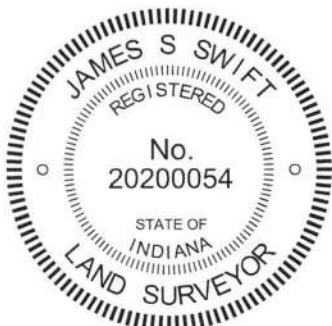


The Harrison monument was set over a stone found

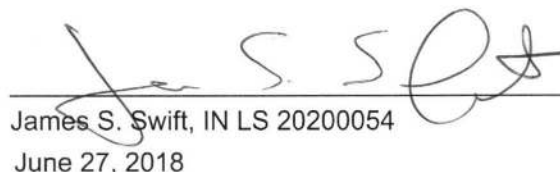
A BCS record dated October 18, 1858 states, with respect to this corner, "Reest. from with trees, set rock 8x12." A BCS tie card dated October 5, 1971 states "No stone - RRR put in." The term RRR is interpreted to signify railroad rail.

This corner was excavated on June 13, 2018. Prior to excavation, a Mag nail was found flush with the surface of the road at the center of the intersection. Excavation revealed a vertical section of railroad rail found at 7 inches deep, directly below the Mag nail. Further excavation revealed a stone found at 26 inches deep. The stone was embedded in the clay layer below the road with the top of the stone coincident with bottom of the road bed. The stone measured 8 inches N-S by 11 inches E-W by 4 inches tall. It was oriented in cardinal directions and had a substantial divot at the top, high point of the rock. It is noted that the stone is situated in line with the old post on the south side of the road, almost exactly 1 rod (16.5 feet) north of the post. The stone was accepted as being the monument described in the 1858 record. The divot on the top of the stone was held as marking the corner and a Harrison monument was set directly over the divot. Clearly, the statement in the 1971 tie card of "no stone" is erroneous and the railroad rail set in 1971 is not considered to be marking the corner. The railroad rail, removed during excavation, had been 1.0 foot north and 0.8 foot west of the divot on the stone.

This corner was originally established as a wood post in 1820.




Kenneth E. Hedge, County Surveyor


James S. Swift, IN LS 20200054
June 27, 2018

Jackson
Township

Section 13
T18N, R2W

Section 24
T18N, R2W

SECTION CORNER RECORD

SW 300-700

BOONE COUNTY SURVEYOR'S OFFICE

State Plane grid coordinates NAD83 (2011):

North: 1729468.34 East: 3087937.76 (U.S. survey feet)

Type of monument: Harrison, 4" disk 'Section Corner'

Depth: One inch below adjacent road surface

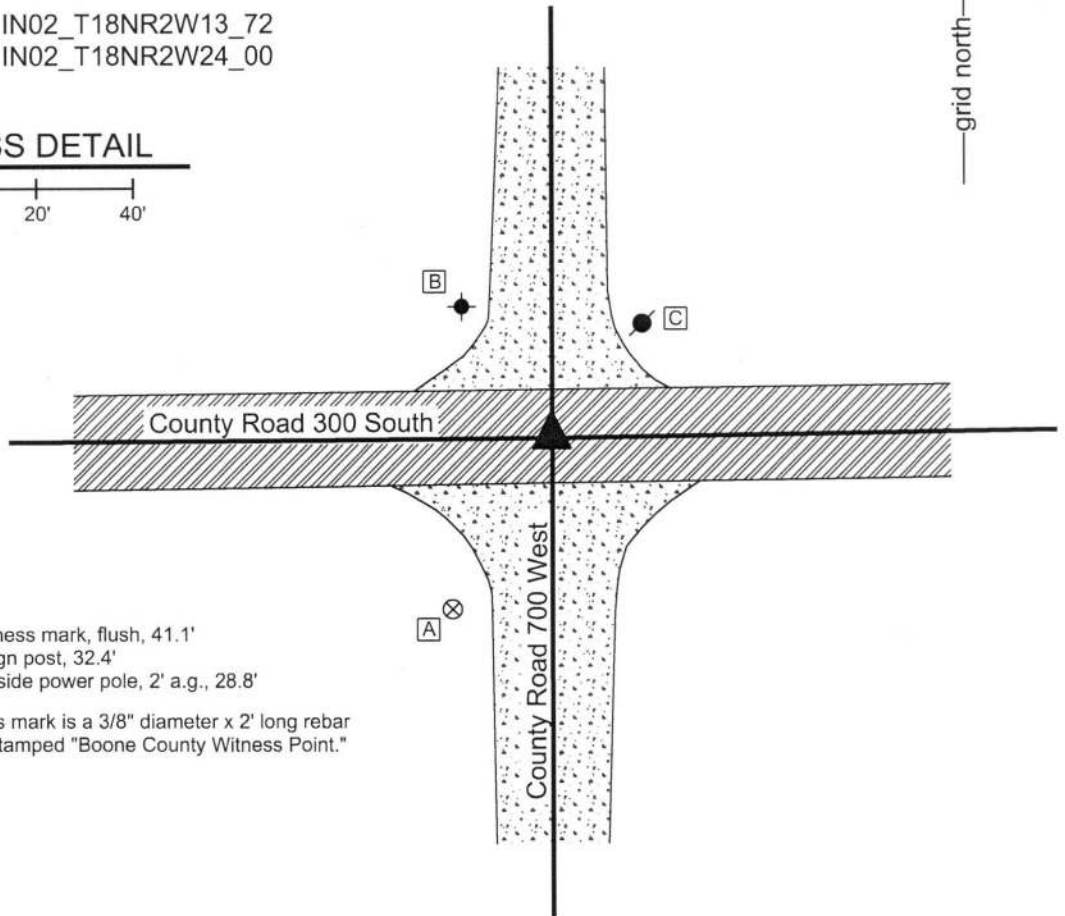
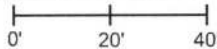
Indiana tie card references:

IN02_T18NR2W14_80 IN02_T18NR2W13_72

IN02_T18NR2W23_08 IN02_T18NR2W24_00

CORNER WITNESS DETAIL

SCALE 1" = 40'



- A - Boone County witness mark, flush, 41.1'
- B - East edge, stop sign post, 32.4'
- C - Mag nail set in S. side power pole, 2' a.g., 28.8'

Boone County witness mark is a 3/8" diameter x 2' long rebar bearing a metal cap stamped "Boone County Witness Point."

The Harrison monument was set in place of a railroad rail found.

No specific descriptions of this corner were found in the BCS Surveyor's Record beyond the original establishment of the corner as a wood post in 1820. A BCS tie card dated August 24, 1967 shows the corner as "no stone."

This corner was excavated on June 13, 2018. Prior to excavation, a railroad spike was found at the surface of the road in the center of the intersection. Excavation revealed a vertical section of railroad rail found at 6 inches deep, below the railroad spike. Though the 1967 tie card does not specifically mention the rail, it is considered most likely that the rail was set in association with the creation of that document. Further excavation of an area extending 2.5 feet in all cardinal directions from the railroad spike and rail revealed no further evidence of the corner. The clay layer below the road bed was found at 15 inches deep. Excavation was performed to approximately 19 inches deep. The position of the top of the railroad rail was held as marking the corner. The rail was removed and replaced with a Harrison monument.



Kenneth E. Hedge
Kenneth E. Hedge, County Surveyor

James S. Swift
James S. Swift, IN LS 20200054
June 27, 2018

Jackson Township

Section 14 T18N, R2W	Section 13 T18N, R2W
Section 23 T18N, R2W	Section 24 T18N, R2W