

SECTION CORNER RECORD

NW 400-600

BOONE COUNTY SURVEYOR'S OFFICE

State Plane grid coordinates NAD83 (2011):

North: 1766726.97 East: 3093128.13 (U.S. survey feet)

Type of monument: Harrison, 4" disk 'Section Corner'

Depth: Six inches below adjacent gravel road surface

Indiana tie card references:

IN02_T19NR2W12_80 IN02_T19NR1W07_72

IN02_T19NR2W13_08 IN02_T19NR1W18_00



CORNER WITNESS DETAIL

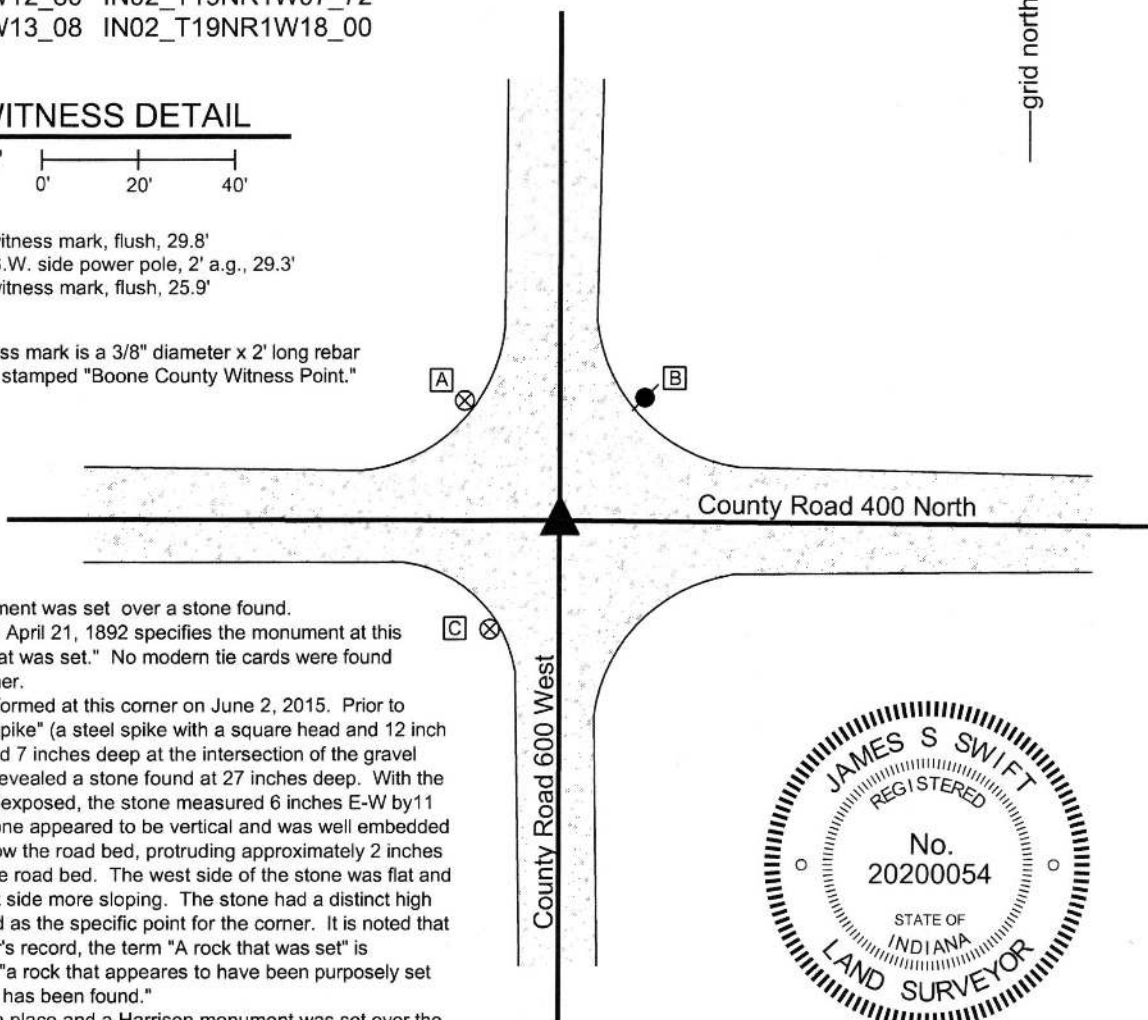
SCALE 1" = 40'

A - Boone County witness mark, flush, 29.8'

B - Mag nail set in S.W. side power pole, 2' a.g., 29.3'

C - Boone County witness mark, flush, 25.9'

Boone County witness mark is a 3/8" diameter x 2' long rebar bearing a metal cap stamped "Boone County Witness Point."



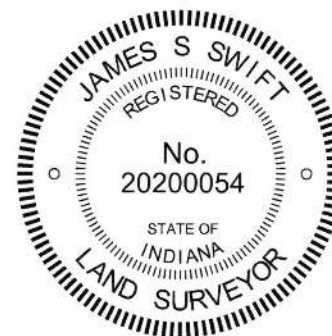
The Harrison monument was set over a stone found.

A BCS record dated April 21, 1892 specifies the monument at this corner as "A rock that was set." No modern tie cards were found referencing this corner.

Excavation was performed at this corner on June 2, 2015. Prior to excavation, a "bolt spike" (a steel spike with a square head and 12 inch long shaft) was found 7 inches deep at the intersection of the gravel roads. Excavation revealed a stone found at 27 inches deep. With the top 11 inches stone exposed, the stone measured 6 inches E-W by 11 inches N-S. The stone appeared to be vertical and was well embedded in the clay layer below the road bed, protruding approximately 2 inches into the bottom of the road bed. The west side of the stone was flat and vertical and the east side more sloping. The stone had a distinct high point which was held as the specific point for the corner. It is noted that in the BCS Surveyor's record, the term "A rock that was set" is interpreted to mean "a rock that appears to have been purposely set as a monument and has been found."

The stone was left in place and a Harrison monument was set over the top, high point. The bolt spike, removed during excavation, had been 0.6 of a foot north of the high point of the stone.

This corner was originally established as a wood post in 1819. The federal notes from 1829 subdivision of the township call the corner as closing on the existing post. Hence, though this corner falls on a range line, it is not a double corner.



Washington Township

Kenneth E. Hedge
Kenneth E. Hedge, County Surveyor

James S. Swift
James S. Swift, IN LS 20200054

March 24, 2016

Sugar Creek Township

Jefferson Township

Section 12 T19N, R2W	Section 7 T19N, R1W
Section 13 T19N, R2W	Section 18 T19N, R1W

PHOTOGRAPHIC DOCUMENTATION

Date of photography: June 2, 2015

The stone as it was originally exposed.



The stone more fully exposed.



View from above the stone looking west along County Road 400 North.



View from the north, looking across the stone and south along County Road 600 West.



For details and documentation, refer to related sheet "Section Corner Record."

SECTION CORNER RECORD

NW 400-650

BOONE COUNTY SURVEYOR'S OFFICE

State Plane grid coordinates NAD83 (2011):

North: 1766733.56 East: 3090488.08 (U.S. survey feet)

Type of monument: Harrison, 4" disk 'Section Corner'

Depth: Six inches below adjacent gravel road surface

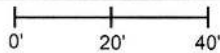
Indiana tie card references:

IN02_T19NR2W12_76

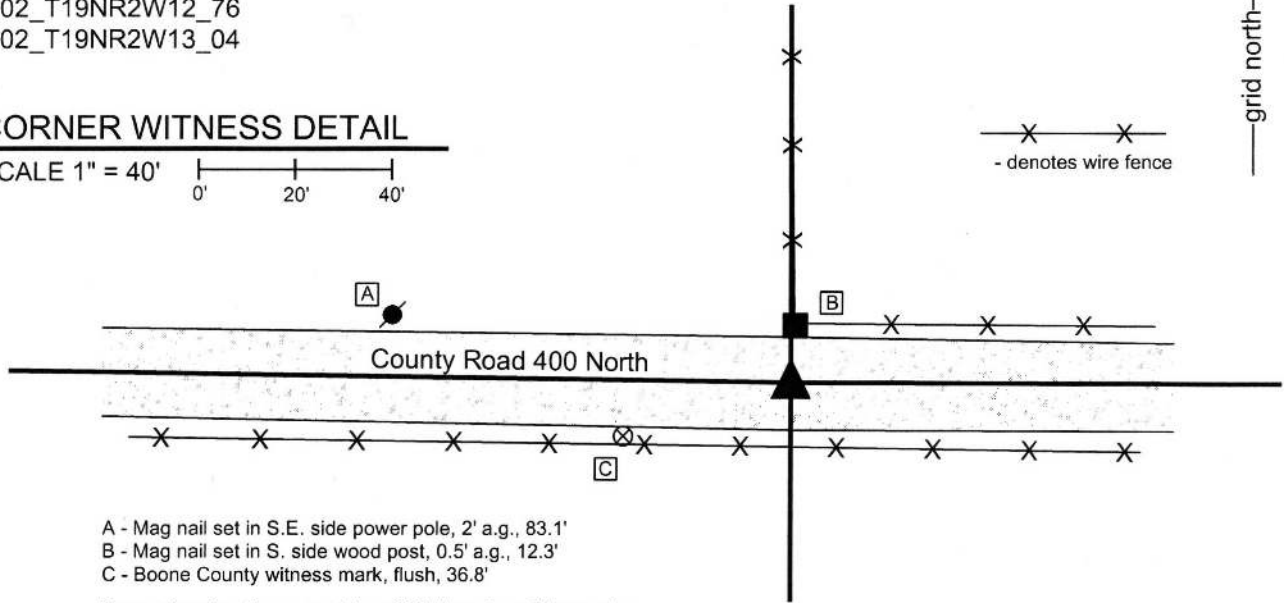
IN02_T19NR2W13_04

CORNER WITNESS DETAIL

SCALE 1" = 40'



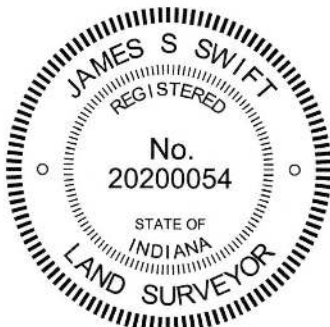
X X
- denotes wire fence



- A - Mag nail set in S.E. side power pole, 2' a.g., 83.1'
- B - Mag nail set in S. side wood post, 0.5' a.g., 12.3'
- C - Boone County witness mark, flush, 36.8'

Boone County witness mark is a 3/8" diameter x 2' long rebar bearing a metal cap stamped "Boone County Witness Point."

The Harrison monument was set per local evidence and at a position computed with respect to adjacent corners. No specific descriptions of this corner were found in the BCS Surveyor's record beyond the original establishment of the corner as a wood post in 1829. No modern tie cards were found referencing this corner. This corner was excavated on June 15, 2015. Prior to excavation, no artificial monuments were found marking the corner. Significant evidence of the corner does exist in the form of the east-west roadway and a fence to the north. Excavation of a seven by seven foot area centered on the point where the prolongation of the fence intersects the roadway yielded no further evidence of the corner. A position for the corner was established in the approximate center of the roadway at a point equidistant from the adjacent section corners to the east and west, respectively. This point falls nearly in line with the fence to the north. As so established, the corner is along the west edge of the corner post on the north side of the road. Note, this position is not on a straight line between the two section corners, as the existing E-W gravel road was held as the controlling evidence of the position of the corner in the north-south dimension. A pure evidence based interpretation of the corner might place it slightly (less than one foot) further east, directly in line with the fence to the north. However, it has been observed throughout the county that in many situations, the corner falls slightly one side or another of an existing fence. In this situation, it is apparent that the north-south fence is of similar character to other fencing on the property to the northeast of the corner. Hence, by establishing the corner equidistant from the adjacent section corners to the east and west, the fence is situated on the property to the east rather than splitting the line. Based on experience with other corners, this appeared to be the best solution in the field. Up to one foot of uncertainty may be associated with the position of the corner in an E-W dimension. Analysis of evidence of the quarter-quarter corners to the east and west of the subject corner and the relative locations of this evidence with respect to the relevant section corners and subject corner did not yield a conclusive, defensible position for the corner. This corner was originally established as a wood post in 1829.



Kenneth E. Hedge
Kenneth E. Hedge, County Surveyor

James S. Swift
James S. Swift, IN LS 20200054
March 28, 2015

Sugar Creek
Township

Section 12
T19N, R2W

Jefferson
Township

Section 13
T19N, R2W

SECTION CORNER RECORD

NW 400-700

BOONE COUNTY SURVEYOR'S OFFICE

State Plane grid coordinates NAD83 (2011):

North: 1766772.98 East: 3087848.30 (U.S. survey feet)

Type of monument: Harrison, 4" disk 'Section Corner'

Depth: One inch below adjacent road surface

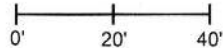
Indiana tie card references:

IN02_T19NR2W11_80 IN02_T19NR2W12_72

IN02_T19NR2W14_08 IN02_T19NR2W13_00

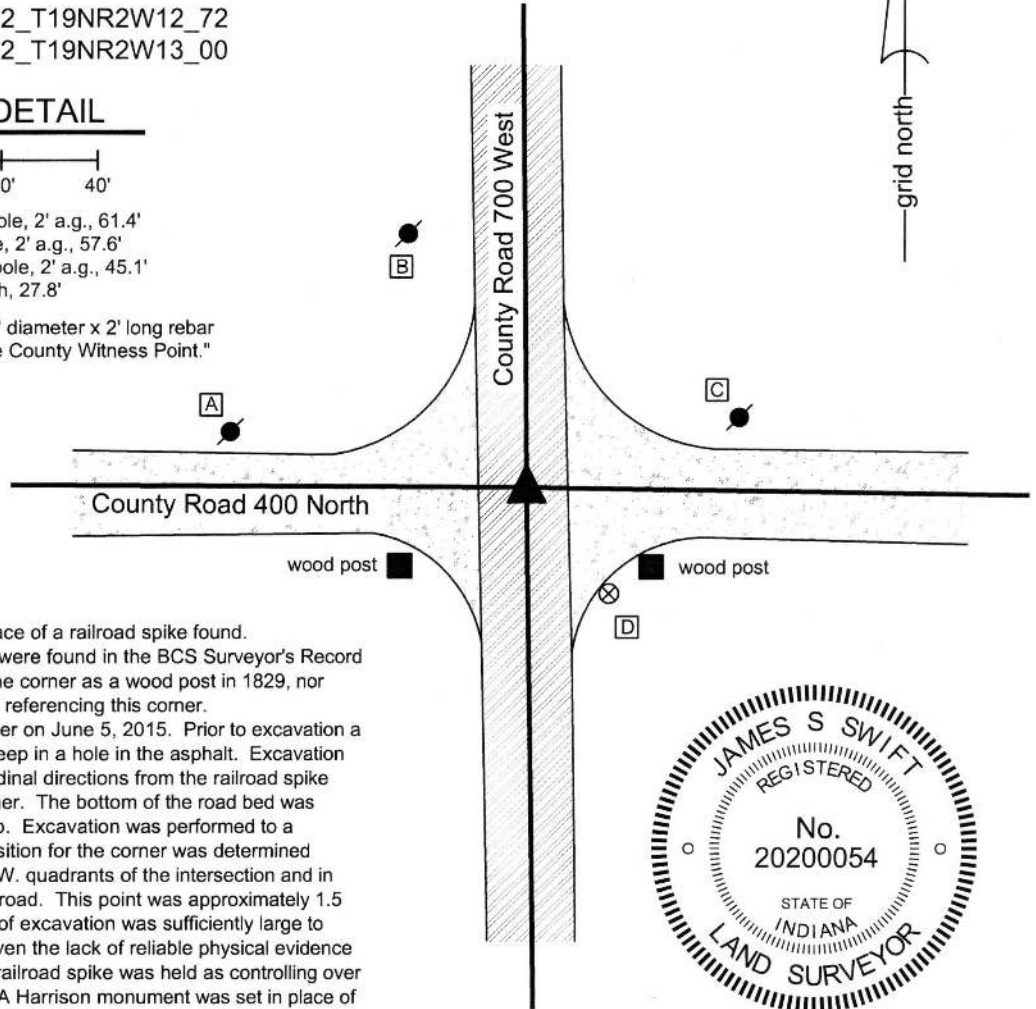
CORNER WITNESS DETAIL

SCALE 1" = 40'



- A - Mag nail set in S.E. side power pole, 2' a.g., 61.4'
- B - Mag nail set in E. side power pole, 2' a.g., 57.6'
- C - Mag nail set in S.W. side power pole, 2' a.g., 45.1'
- D - Boone County witness mark, flush, 27.8'

Boone County witness mark is a 3/8" diameter x 2' long rebar bearing a metal cap stamped "Boone County Witness Point."



The Harrison monument was set in place of a railroad spike found. No specific descriptions of this corner were found in the BCS Surveyor's Record beyond the original establishment of the corner as a wood post in 1829, nor were any modern BCS tie cards found referencing this corner. Excavation was performed at this corner on June 5, 2015. Prior to excavation a railroad spike was found at 3 inches deep in a hole in the asphalt. Excavation of an area extending 2.5 feet in all cardinal directions from the railroad spike yielded no further evidence of the corner. The bottom of the road bed was found at approximately 20 inches deep. Excavation was performed to a minimum of 22 inches. A probable position for the corner was determined relative to the posts in the S.E. and S.W. quadrants of the intersection and in relation to the apparent centers of the road. This point was approximately 1.5 feet northwest of the spike. The area of excavation was sufficiently large to encompass this probable position. Given the lack of reliable physical evidence of the corner itself, the position of the railroad spike was held as controlling over the accessory evidence of the posts. A Harrison monument was set in place of the railroad spike, which was removed during excavation. This corner was originally established as a wood post in 1829.



Kenneth E. Hedge
 Kenneth E. Hedge, County Surveyor

James S. Swift
 James S. Swift, IN LS 20200054

March 28, 2015

Sugar Creek Township

Section 11
T19N, R2W

Section 12
T19N, R2W

Jefferson Township

Section 14
T19N, R2W

Section 13
T19N, R2W

SECTION CORNER RECORD

NW 450-600

BOONE COUNTY SURVEYOR'S OFFICE

State Plane grid coordinates NAD83 (2011):

Corner 1: North: 1769377.19 East: 3093130.72 (U.S. survey feet)

Corner 2: North: 1769356.07 East: 3093130.70 (U.S. survey feet)

Type of monument: Harrison, 4" disk 'Section Corner'

Depth: flush (Corner 1), six inches below road surface (Corner 2)

Indiana tie card references:

IN02_T19NR2W12_44 IN02_T19NR1W07_36

CORNER WITNESS DETAIL

SCALE 1" = 50'

- A - Mag nail set in S. side power pole, 2' a.g.
72.2' to Corner 1, 80.3' to Corner 2
- B - Mag nail set in S.W. side power pole, 2' a.g., 26.9'
23.4' to Corner 1, 26.9' to Corner 2
- C - Boone County witness mark, flush,
50.3' to Corner 1, 37.1' to Corner 2
- D - Mag nail set in N. side power pole, 2' a.g., 57.4'
78.1' to Corner 1, 57.4' to Corner 2

The Harrison monument at corner 2 was set over a stone found. The Harrison monument at corner 1 was set at a calculated position, as discussed below. A BCS record of April 1, 1854 shows corner 2 and gives distance ties to two bearing trees but does not state any more specific information about the corner. A BCS record which does not contain a specific date but appears to date prior to 1881 states, with respect to corner 1, "Found 32 links N. of stone set for Sect. 7." The reference to section 7 refers to corner 2. The call of 32 links refers to the expected closing distance for this corner, which is the average of the record federal closing distances at the section corners to the north and south. A BCS tie card dated August 11, 1971 states, with respect to corner 2, "No stone - RRR put in." This document does not refer to corner 1.

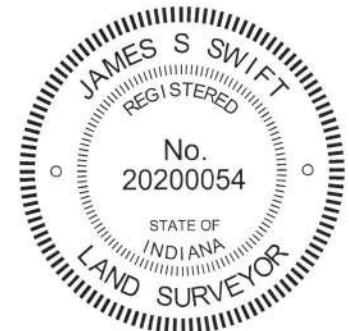
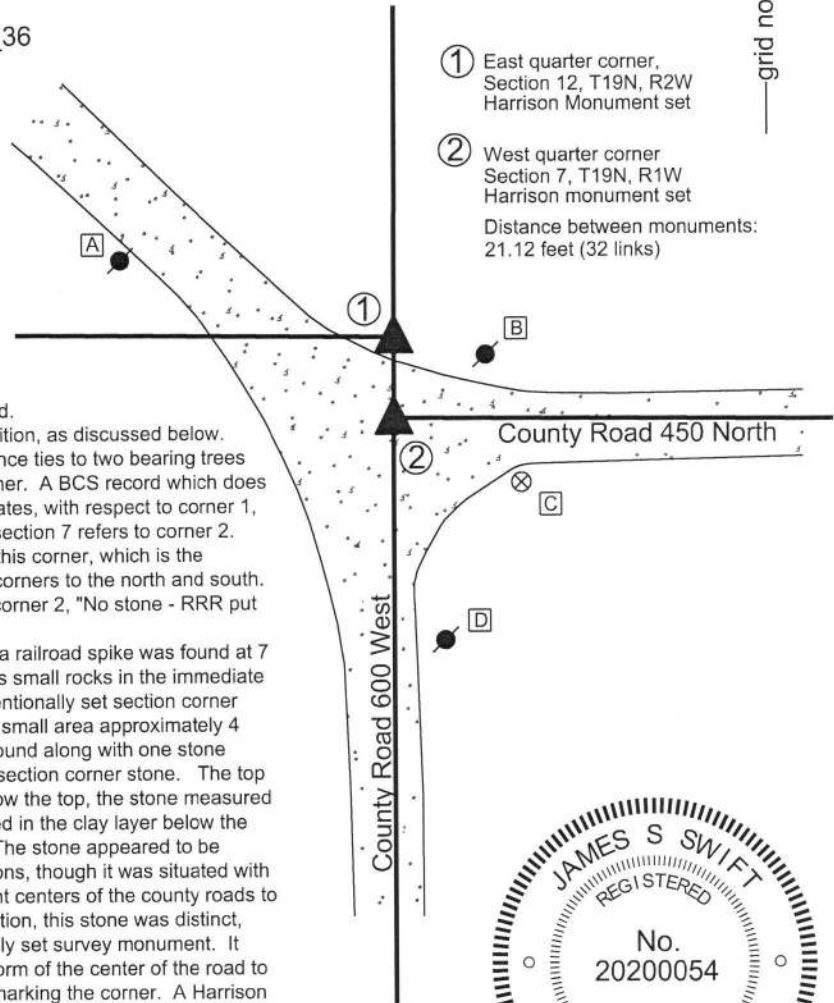
Corner 2 was excavated on July 2, 2015. Prior to excavation, a railroad spike was found at 7 inches deep in the gravel road. Excavation revealed numerous small rocks in the immediate vicinity of the railroad spike, none of which appeared to be intentionally set section corner stones. Further excavation revealed several more stones in a small area approximately 4 feet east of the found railroad spike. Five small stones were found along with one stone which is much larger and bore the distinct characteristics of a section corner stone. The top 12 inches of this larger stone were exposed. At 12 inches below the top, the stone measured 14 inches N-S by 7 inches E-W. The stone was fully embedded in the clay layer below the road, with the top of the stone at the bottom of the road bed. The stone appeared to be standing on end and was generally oriented in cardinal directions, though it was situated with a slight NW/SE orientation. The stone fit well with the apparent centers of the county roads to the south and east. Of the various rocks found at this intersection, this stone was distinct, different, larger, vertical, and appeared to represent a purposely set survey monument. It also fit much better with the evidence of the range line in the form of the center of the road to the south than did the railroad spike. The stone was held as marking the corner. A Harrison monument was set directly over the top, center of the stone. The railroad spike, removed during excavation, had been 3.6 feet west of the stone.

No ties were found remaining from the 1971 tie card, nor was a railroad rail found. It is most likely that the rail has been removed by road grading equipment. It is not known whether the found railroad spike marked the position of the railroad rail.

Corner 1 was excavated on November 21, 2018. Prior to excavation, the position of the corner was computed at 21.12 feet (32 links) north of Corner 2 on the prolongation of the line from the standard corner 1/2 mile south (see BCS Corner NW 400-600) through Corner 2. Excavation revealed a stone found 1.5 feet east and 0.7 feet south of the calculated position. The stone was not well embedded in the ground and significant debris was found below the stone. The stone appears to have been disturbed and was not held as marking the corner. A Harrison monument was set at the calculated position.

A previous record dated March 28, 2016 showing only Corner 2 set is superceded by the current document.

Corner 1 was originally established as a wood post in 1819. Corner 2 is not an original corner set by the federal government.



January 9, 2019

Sugar Creek
Township

Washington
Township

Section 12
T19N, R2W

Section 7
T19N, R1W

Kenneth E. Hedge, County Surveyor

James S. Swift, IN LS 20200054

PHOTOGRAPHIC DOCUMENTATION

Date of photography: July 2, 2015

Several of the found stones as originally exposed, including the stone held as the corner.



The stone held as marking the corner more fully exposed, after the other stones were removed.



The stone held as marking the corner, fully exposed, from above.



View from above the corner stone, looking south along County Road 600 West.



For details and documentation, refer to related sheet "Section Corner Record."

SECTION CORNER RECORD

NW 450-700

BOONE COUNTY SURVEYOR'S OFFICE

State Plane grid coordinates NAD83 (2011):

North: 1769424.63 East: 3087824.81 (U.S. survey feet)

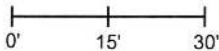
Type of monument: Harrison, 4" disk 'Section Corner'

Depth: One inch below adjacent road surface

Indiana tie card references:

IN02_T19NR2W11_44 IN02_T19NR2W12_36

CORNER WITNESS DETAIL

SCALE 1" = 30' 

- A - Boone County witness mark, flush, 33.1'
- B - Boone County witness mark, flush, 31.6'
- C - Mag nail set in E. side power pole, 2' a.g., 18.8'
- D - Mag nail set in N.E. side wood post, 2' a.g., 34.5'

Boone County witness mark is a 3/8" diameter x 2' long rebar bearing a metal cap stamped "Boone County Witness Point."

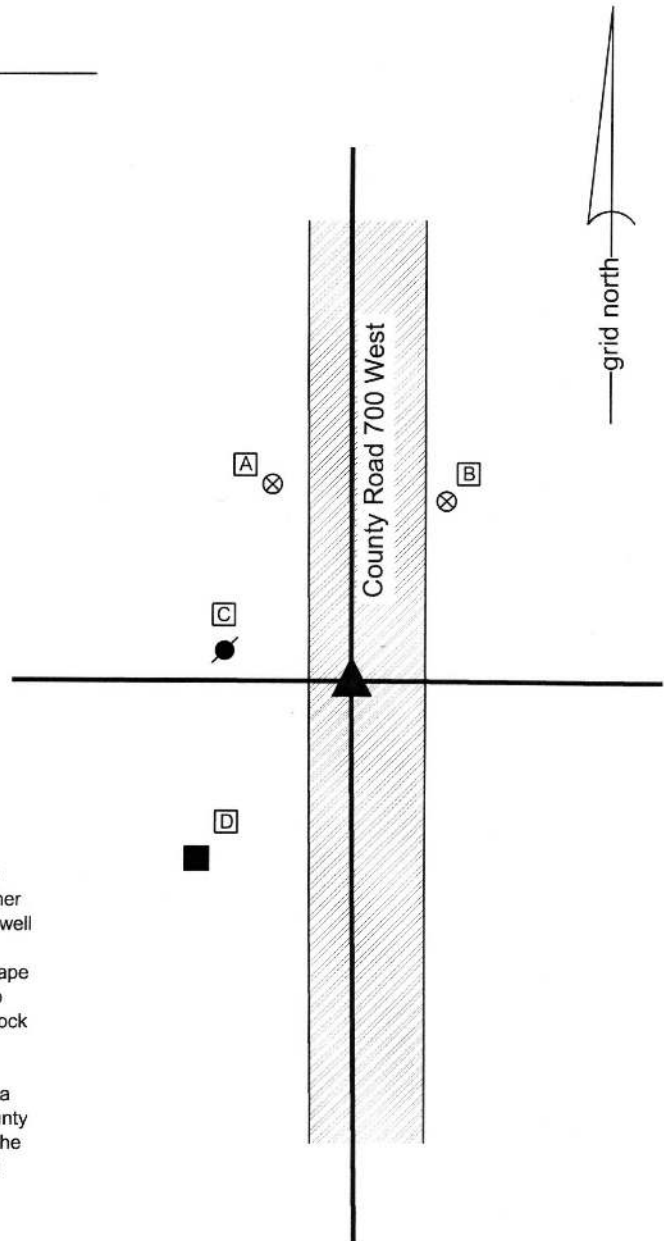
The Harrison monument was set in place of a railroad spike found. A BCS record of May 9-10, 1895 states, with respect to this corner, "Established rock, 24x18x12 +." No modern tie cards were found referencing this corner.

Excavation was performed at this corner on June 22, 2015. Prior to excavation, a railroad spike was found at 2 inches deep in a hole in the asphalt roadway. Excavation of an area extending 2.5 feet north, 4 feet east, 3.5 feet south, and 2 feet west of the railroad spike yielded no further evidence of the corner. Excavation was performed to a depth of 2 feet, well into the clay layer below the bottom of the road bed.

A rock which matches the record dimensions of 24x18x12 and has a shape typical of many section corner stones was found in the grass adjacent to the road, along with several other rocks. No marks were found on this rock and it could not be positively identified as being the same monument referred to in the 1895 record.

The railroad spike fit with local evidence of the corner, being in line with a fence to the west. It was near, though slightly west of, the center of County Road 700 West (Hazelrigg Road). Having found no contrary evidence, the position of the railroad spike was held as marking the corner. The spike was removed during excavation and was replaced with a Harrison monument in the same position.

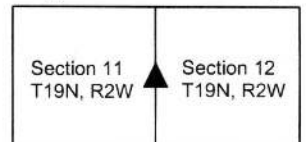
This corner was originally established as a wood post in 1829.



Kenneth E. Hedge
 Kenneth E. Hedge, County Surveyor

James S. Swift
 James S. Swift, IN LS 20200054
 March 28, 2016

Sugar Creek Township



SECTION CORNER RECORD

BOONE COUNTY SURVEYOR'S OFFICE

NW 500-700

State Plane grid coordinates NAD83 (2011):
 North: 1772068.94 East: 3087819.95 (U.S. survey feet)

Type of monument: Harrison, 4" disk 'Section Corner'
 Depth: Flush with adjacent road surface

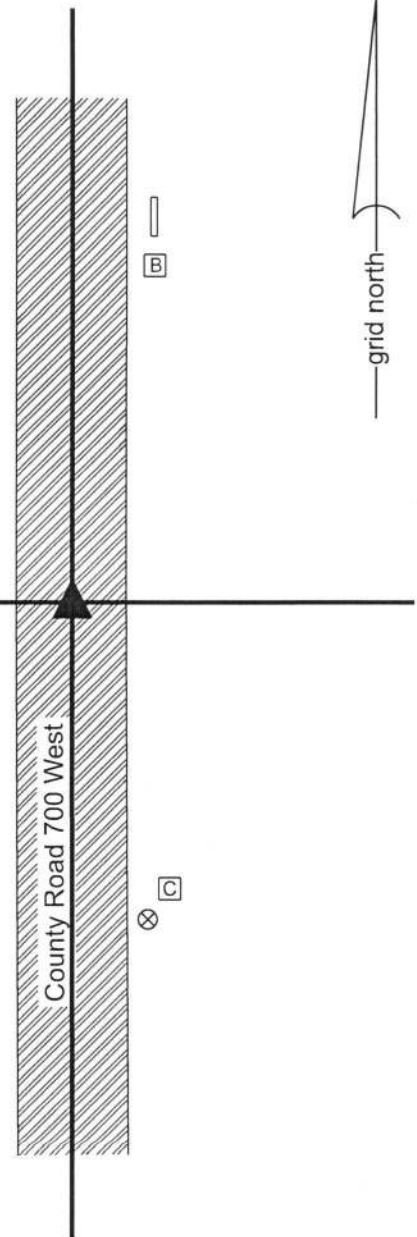
Indiana tie card references:
 IN02_T19NR2W02_80 IN02_T19NR2W01_72
 IN02_T19NR2W11_08 IN02_T19NR2W12_00

CORNER WITNESS DETAIL

SCALE 1" = 30'

- A - Mag nail set in E. side wood post, 3' a.g., 21.5'
- B - S.W. corner, base of conc. headwall, flush, 65.7'
- C - Boone County witness mark, flush, 50.8'

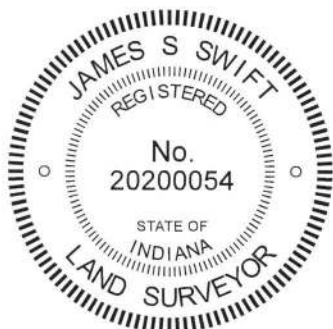
Boone County witness mark is a 3/8" diameter x 2' long rebar bearing a metal cap stamped "Boone County Witness Point."



The Harrison monument was set over a vertical section of railroad rail found. A BCS record dated September 12, 1939 states, with respect to this corner (E) and the corner one half mile west (F), "Located E and F by running line in Sec. 11. E - Set Iron Pin." A BCS tie card dated April 12, 1968 shows the corner as 'No stone.'

This corner falls in an area of substantial fill. Minor excavation was performed on July 17, 2018. Prior to excavation, a 5/8 inch rebar was found at 1 inch deep in the center of the N-S roadway, generally in-line with evidence of occupation to the east and west. Excavation revealed a section of 1/2 inch diameter rebar found at 12 inches deep and a vertical section of railroad rail found at 14 inches deep. The railroad rail is not mentioned on the 1968 tie card but it is considered most likely that the rail was set in association with the creation of that document, as it is known that BCS field crews of that era routinely set vertical sections of railroad rail to mark corners. The 1/2 inch rebar had been situated along the north edge of the rail and the 5/8 inch rebar had been situated slightly south of the rail, being 0.2 foot south of the top, center-of-mass point of the rail. The rail was held as marking the corner and a Harrison monument was set directly over the top of the rail. The 5/8 inch rebar was driven to approximately the same elevation as the top of the rail and left in place. The 1/2 inch rebar was left in place as found.

This corner was originally established as a wood post in 1829.



Kenneth E. Hedge
 Kenneth E. Hedge, County Surveyor

James S. Swift
 James S. Swift, IN LS 20200054
 August 15, 2018

Sugar Creek Township

Section 2 T19N, R2W	Section 1 T19N, R2W
Section 11 T19N, R2W	Section 12 T19N, R2W