

SECTION CORNER RECORD

NE 400-1100

BOONE COUNTY SURVEYOR'S OFFICE

State Plane grid coordinates NAD83 (NSRS 2007):
 North: 1767944.23 East: 3182847.82 (U.S. survey feet)

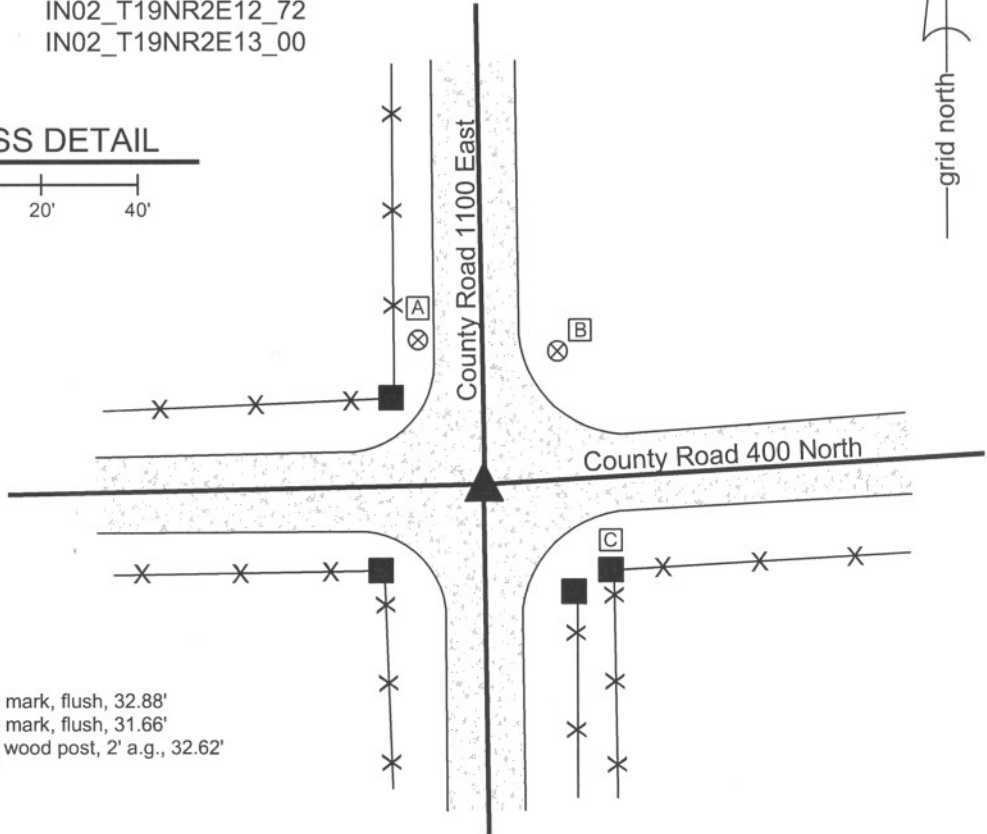
Type of monument: Harrison, 4" disk 'Section Corner'
 Depth: six inches below adjacent gravel road surface

Indiana tie card references:
 IN02_T19NR2E11_80 IN02_T19NR2E12_72
 IN02_T19NR2E14_08 IN02_T19NR2E13_00



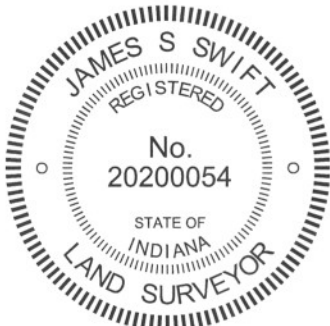
CORNER WITNESS DETAIL

SCALE 1" = 40'



- A - Boone County witness mark, flush, 32.88'
- B - Boone County witness mark, flush, 31.66'
- C - Mag nail set in N. side wood post, 2' a.g., 32.62'

The harrison monument was set in place of a stone found and also in place of the top of a section of railroad rail found leaning over the stone. A BCS record of May 7-8, 1861 states "Reestablished from one tree still some remains of the other. Set Stone 12.8 by 6 in." A BCS tie card dated July 19, 1974 states "Found stone + RRR."
 This corner was excavated on August 26, 2010. Prior to excavation, two 5/8 inch diameter rebars were adjacent to each other at approximately 3 inches below the surface of the gravel road. Excavation revealed the top of a railroad rail at approximately 4 inches, slightly south and east of the rebars. The rail was leaning substantially towards the south. Further excavation revealed that the rail was leaning over the top of a stone, the top of which was found at 13 inches below the level of the surface of the road. The stone was larger than the 1861 record stone, measuring 18 inches tall by 16 inches N-S by 12 inches E-W. Approximately the bottom 10 inches of the stone were embedded in the clay layer below the road while the top 8 inches were protruding into the base of the road. The stone was removed and no other evidence of the corner was found. Excavation extended 4 feet to the north but no further excavation was performed south of the corner due to the presence of a large bundled phone line crossing the intersection near the corner, per IUPPS. The rail was leaning such that the top of the rail was directly over the physical top, center of the stone. The rebars had been approximately three inches northwest of this point. The rebars, rail and stone were removed during excavation and a harrison monument was set at the position of the top of the rail and the top of the stone. This corner was originally established as a wood post in June, 1821.



Kenneth E. Hedge
 Kenneth E. Hedge, County Surveyor

James S. Swift
 James S. Swift, IN LS 20200054
 July 25, 2011

Marion Twp

Section 11 T19N, R2E	Section 12 T19N, R2E
Section 14 T19N, R2E	Section 13 T19N, R2E

PHOTOGRAPHIC DOCUMENTATION

Date of photography: September 13, 2010

View of the stone as first exposed.



View of the stone partially exposed.



View from the north, looking across the stone and south along County Road 1100 East.



View of the stone from above and north.



The stone and railroad rail (rail is in the grass) after being removed from the road bed.



For details and documentation, refer to related sheet "Section Corner Record."

SECTION CORNER RECORD

NE 400-1150

BOONE COUNTY SURVEYOR'S OFFICE

State Plane grid coordinates NAD83 (NSRS 2007):
North: 1768103.46 East: 3185517.59 (U.S. survey feet)

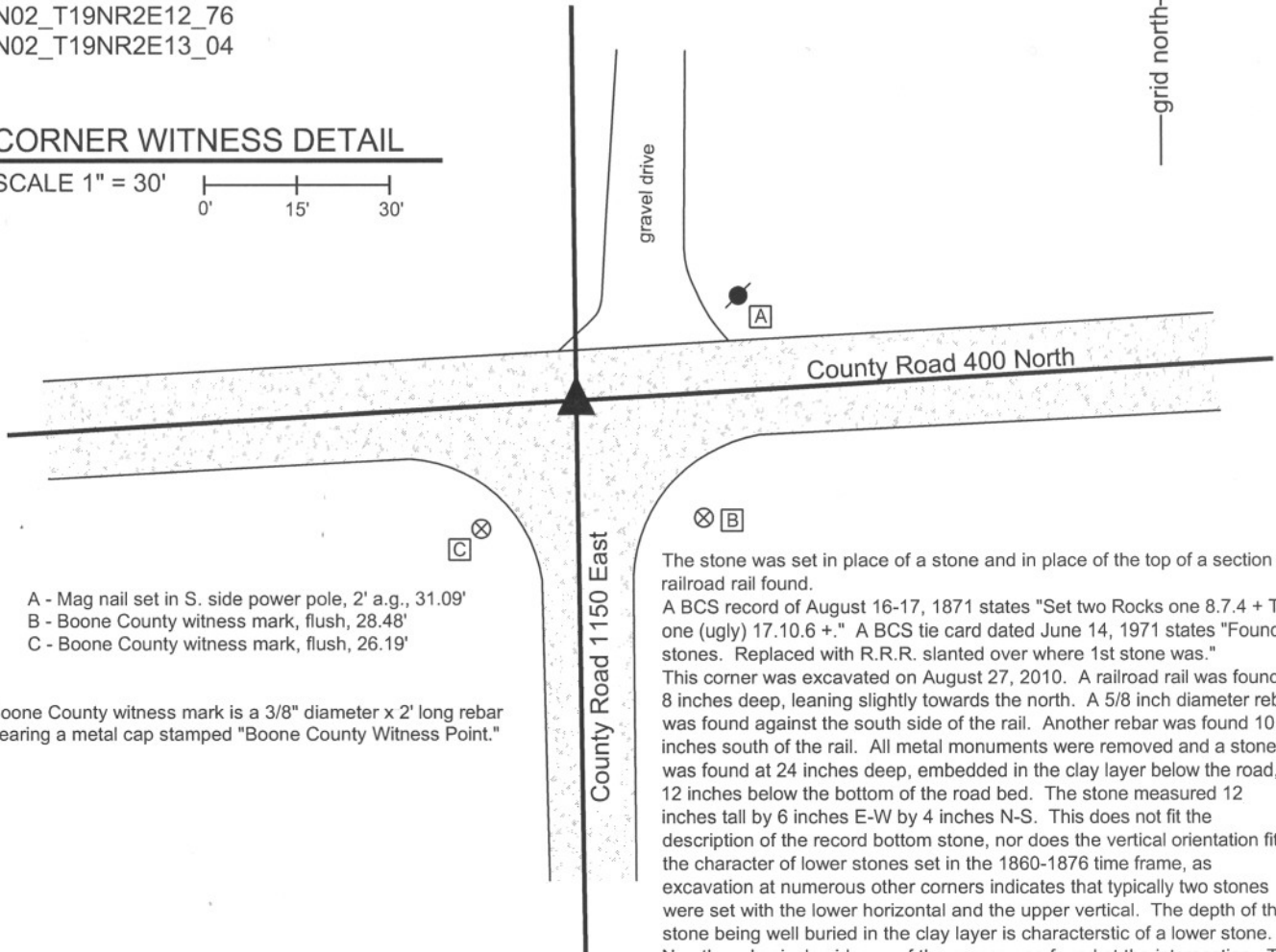
Type of monument: Harrison, 4" disk 'Section Corner'
Depth: Six inches below the gravel road surface.

Indiana tie card references:
IN02_T19NR2E12_76
IN02_T19NR2E13_04



CORNER WITNESS DETAIL

SCALE 1" = 30'
0' 15' 30'



- A - Mag nail set in S. side power pole, 2' a.g., 31.09'
- B - Boone County witness mark, flush, 28.48'
- C - Boone County witness mark, flush, 26.19'

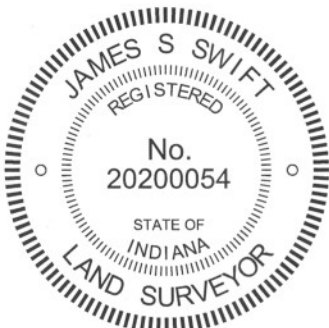
Boone County witness mark is a 3/8" diameter x 2' long rebar bearing a metal cap stamped "Boone County Witness Point."

The stone was set in place of a stone and in place of the top of a section of railroad rail found.

A BCS record of August 16-17, 1871 states "Set two Rocks one 8.7.4 + Top one (ugly) 17.10.6 +." A BCS tie card dated June 14, 1971 states "Found 2 stones. Replaced with R.R.R. slanted over where 1st stone was."

This corner was excavated on August 27, 2010. A railroad rail was found at 8 inches deep, leaning slightly towards the north. A 5/8 inch diameter rebar was found against the south side of the rail. Another rebar was found 10 inches south of the rail. All metal monuments were removed and a stone was found at 24 inches deep, embedded in the clay layer below the road, 12 inches below the bottom of the road bed. The stone measured 12 inches tall by 6 inches E-W by 4 inches N-S. This does not fit the description of the record bottom stone, nor does the vertical orientation fit the character of lower stones set in the 1860-1876 time frame, as excavation at numerous other corners indicates that typically two stones were set with the lower horizontal and the upper vertical. The depth of the stone being well buried in the clay layer is characteristic of a lower stone. No other physical evidence of the corner was found at the intersection. The top of the rail as originally found was over the south edge of the stone and rust stains on the south edge of the stone demonstrate that the rail was against the edge. The 1971 reference to the rail being "slanted over where the 1st stone was" was held and the harrison monument was set in the position of the top of the rail as originally found.

This corner was originally established as a wood post in June, 1821.



Kenneth E. Hedge
Kenneth E. Hedge, County Surveyor

James S. Swift
James S. Swift, IN LS 20200054
July 25, 2011

Marion Twp



PHOTOGRAPHIC DOCUMENTATION

Date of photography: August 27, 2010

The railroad rail, as found, leaning to the north.



The stone found below the rail.



The stone, removed from the clay below the road bed and stood up in the orientation in which it was found.



For details and documentation, refer to related sheet "Section Corner Record."

SECTION CORNER RECORD

NE 400-1200

BOONE COUNTY SURVEYOR'S OFFICE

State Plane grid coordinates NAD83 (CORS96):

Corner 1: North: 1768260.94 East: 3188187.94 (U.S. survey feet)

Corner 2: North: 1768184.28 East: 3188188.13 (U.S. survey feet)

Type of monument: Harrison, 4" disk 'Section Corner'

Depth: One inch below adjacent road surface

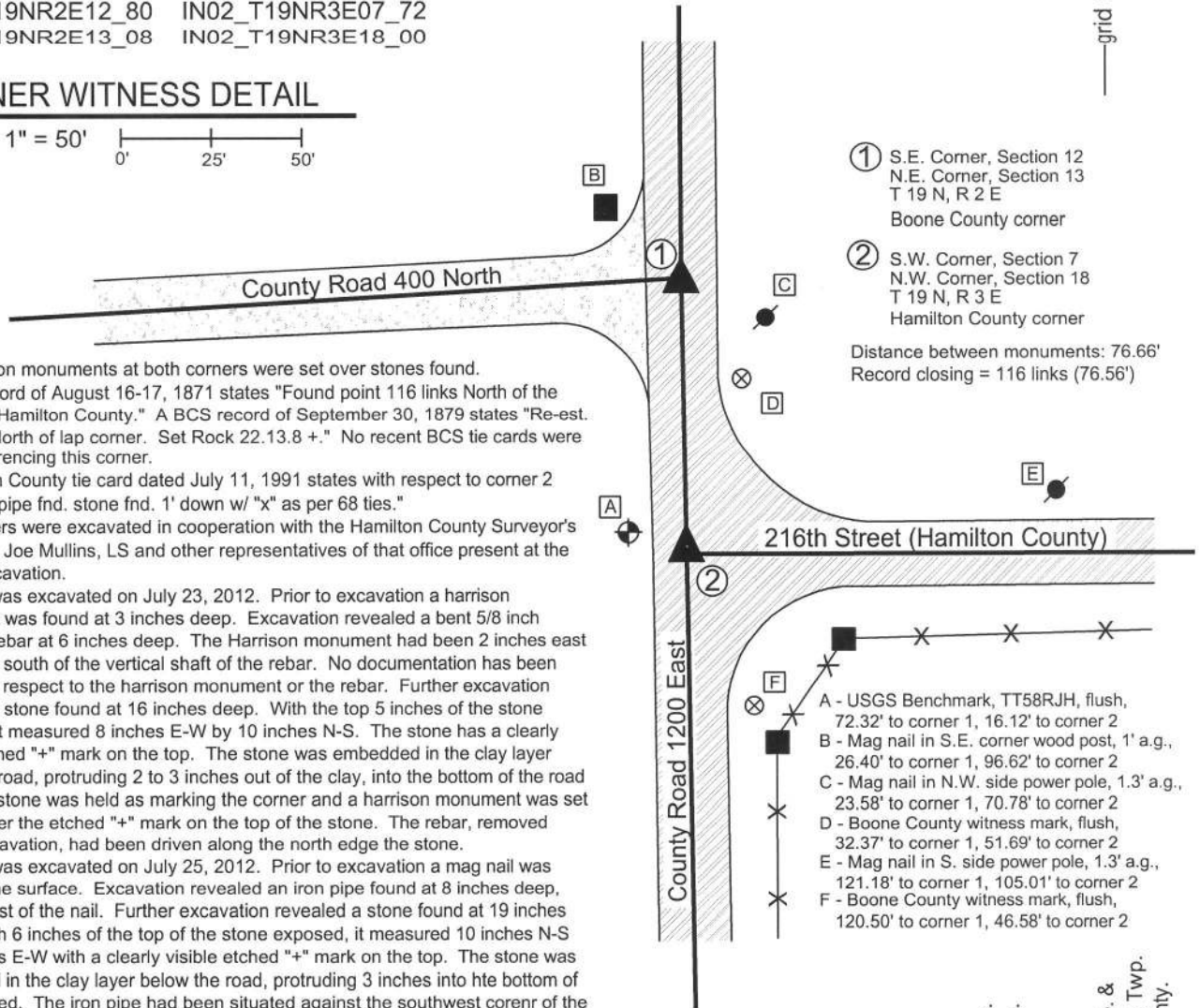
Indiana tie card references:

IN02_T19NR2E12_80 IN02_T19NR3E07_72

IN02_T19NR2E13_08 IN02_T19NR3E18_00

CORNER WITNESS DETAIL

SCALE 1" = 50'



① S.E. Corner, Section 12
N.E. Corner, Section 13
T 19 N, R 2 E
Boone County corner

② S.W. Corner, Section 7
N.W. Corner, Section 18
T 19 N, R 3 E
Hamilton County corner

Distance between monuments: 76.66'
Record closing = 116 links (76.56')

The harrison monuments at both corners were set over stones found. A BCS record of August 16-17, 1871 states "Found point 116 links North of the corner for Hamilton County." A BCS record of September 30, 1879 states "Re-est. 116 links North of lap corner. Set Rock 22.13.8 +." No recent BCS tie cards were found referencing this corner.

A Hamilton County tie card dated July 11, 1991 states with respect to corner 2 "1/2" iron pipe fnd. stone fnd. 1' down w/ "x" as per 68 ties."

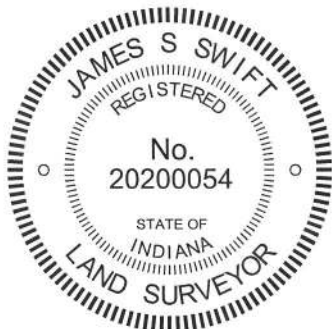
Both corners were excavated in cooperation with the Hamilton County Surveyor's Office with Joe Mullins, LS and other representatives of that office present at the time of excavation.

Corner 1 was excavated on July 23, 2012. Prior to excavation a harrison monument was found at 3 inches deep. Excavation revealed a bent 5/8 inch diameter rebar at 6 inches deep. The Harrison monument had been 2 inches east and 1 inch south of the vertical shaft of the rebar. No documentation has been found with respect to the harrison monument or the rebar. Further excavation revealed a stone found at 16 inches deep. With the top 5 inches of the stone exposed, it measured 8 inches E-W by 10 inches N-S. The stone has a clearly visible etched "+" mark on the top. The stone was embedded in the clay layer below the road, protruding 2 to 3 inches out of the clay, into the bottom of the road bed. The stone was held as marking the corner and a harrison monument was set directly over the etched "+" mark on the top of the stone. The rebar, removed during excavation, had been driven along the north edge of the stone.

Corner 2 was excavated on July 25, 2012. Prior to excavation a mag nail was found at the surface. Excavation revealed an iron pipe found at 8 inches deep, slightly west of the nail. Further excavation revealed a stone found at 19 inches deep. With 6 inches of the top of the stone exposed, it measured 10 inches N-S by 7 inches E-W with a clearly visible etched "+" mark on the top. The stone was embedded in the clay layer below the road, protruding 3 inches into the bottom of the road bed. The iron pipe had been situated against the southwest corner of the stone. The stone was left in place and a harrison monument was set directly over the etched "+" mark. This point is 1.2 feet west of the range line as defined by the standard corners.

- A - USGS Benchmark, TT58RJH, flush, 72.32' to corner 1, 16.12' to corner 2
- B - Mag nail in S.E. corner wood post, 1' a.g., 26.40' to corner 1, 96.62' to corner 2
- C - Mag nail in N.W. side power pole, 1.3' a.g., 23.58' to corner 1, 70.78' to corner 2
- D - Boone County witness mark, flush, 32.37' to corner 1, 51.69' to corner 2
- E - Mag nail in S. side power pole, 1.3' a.g., 121.18' to corner 1, 105.01' to corner 2
- F - Boone County witness mark, flush, 120.50' to corner 1, 46.58' to corner 2

Marion Twp.
Boone Cnty.
Adams Twp. &
Washington Twp.
Hamilton Cnty.



Kenneth E. Hedge
Kenneth E. Hedge, County Surveyor

James S. Swift
James S. Swift, IN LS 20200054

February 6, 2013

Section 12 T19N, R2E	Section 7 T19N, R3E
Section 13 T19N, R2E	Section 18 T19N, R3E

PHOTOGRAPHIC DOCUMENTATION
Date of photography: July 23 & 25, 2012

View of the stone at the Boone County corner (corner 1), as first exposed.



View of the stone at corner 1, washed to show the etched mark on the top of the stone.



View of the from the south, looking across the stone at corner 1 and north along County Road 1200 East (County Line Road.)



The stone at the Hamilton County corner (corner 2).



The stone at corner 2 from above.



For details and documentation, refer to related sheet "Section Corner Record."

SECTION CORNER RECORD

BOONE COUNTY SURVEYOR'S OFFICE


NE 450-1100

State Plane grid coordinates NAD83 (CORS96):
 North: 1770589.27 East: 3182808.21 (U.S. survey feet)

Type of monument: Harrison, 4" disk 'Section Corner'
 Depth: six inches below adjacent gravel road surface

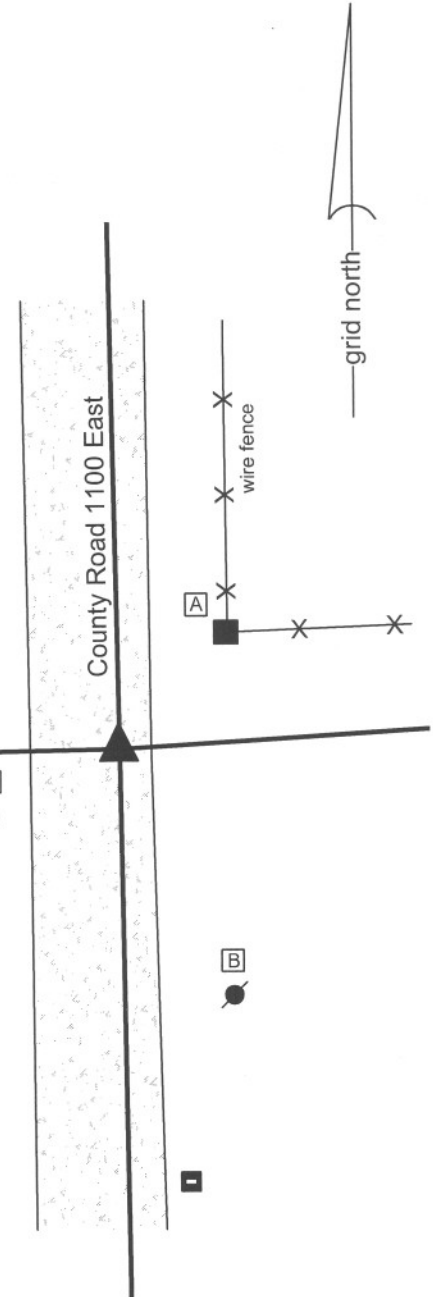
Indiana tie card references:
 IN02_T19NR2E11_44
 IN02_T19NR2E12_36

CORNER WITNESS DETAIL

SCALE 1" = 30' 

- A - Mag nail set in W. side wood post, 1.3' a.g., 24.92'
- B - Mag nail set in W. side power pole, 2' a.g., 41.95'
- C - Boone County witness mark, flush, 22.95'

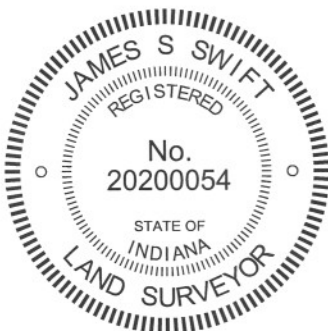
Boone County witness mark is a 3/8" diameter x 2' long rebar bearing a metal cap stamped "Boone County Witness Point."



The harrison monument was set place of a stone found and over another stone found. A BCS record of September 23, 1870 states "Reestablished from roots of Beech. Set two Rocks one 12.11.6 +. Top one 16.8.5 1/2 +". No recent BCS tie cards were found referencing this corner.

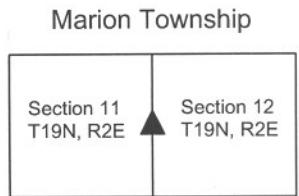
This corner was excavated on November 16, 2011. No metal monument were found prior to excavation. Excavation beginning at the calculated midpoint of the line connecting the section corners to the north and south. Excavation revealed a stone found slightly below the surface. The stone was broken, as found. With the top portion of the stone set on the bottom, the south was 1 inch below the grade of the road. The top, broken portion was painted pink, indicating that it has been found by a field surveyor reasonably recently. No documentation was found for surveys referencing the stone. The stone, being the two portions put together, measured 16 inches tall by 8 inches E-W by 6 inches N-S. This was accepted as being the record top stone described in 1870. An etched + mark was visible on the top of the stone, as put together. The stone was removed and another stone was found below it. This stone measured approximately 11 inches by 11 inches on the top. The remaining dimensions were not confirmed. The lower stone is at approximately 21 inches deep. The lower stone was left in place and the harrison monument was set over it, in the position of the etched + on the top of the upper stone. Although the top portion of the upper stone had been disturbed as found, minimal uncertainty exists as to where the top portion would have been, when placed back onto the bottom portion. The etched + on the top of the stone would have likely been held as the specific point of the corner by field surveyors finding the rock before it was broken and disturbed.

This corner was originally established as a wood post in late June or early July, 1821




 Kenneth E. Hedge, County Surveyor


 James S. Swift, IN LS 20200054
 March 1, 2012



PHOTOGRAPHIC DOCUMENTATION
Date of photography: November 16, 2011

The upper portion of the top stone as first exposed.
The stone was already painted when found.



The lower portion of the top stone as found.



View of the two parts of the top stone from the north, looking south along County Road 1100 East.



The two parts of the top stone put together.



The bottom stone as found and exposed.



For details and documentation, refer to related sheet "Section Corner Record."

SECTION CORNER RECORD

NE 450-1200

BOONE COUNTY SURVEYOR'S OFFICE

Information for Corner 1 only:

State Plane grid coordinates NAD83 (2011):

North: 1770914.18 East: 3188172.74 (U.S. survey feet)

Type of monument: Harrison, 4" disk 'Section Corner'

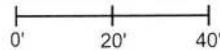
Depth: One inch below adjacent road surface

Indiana tie card references:

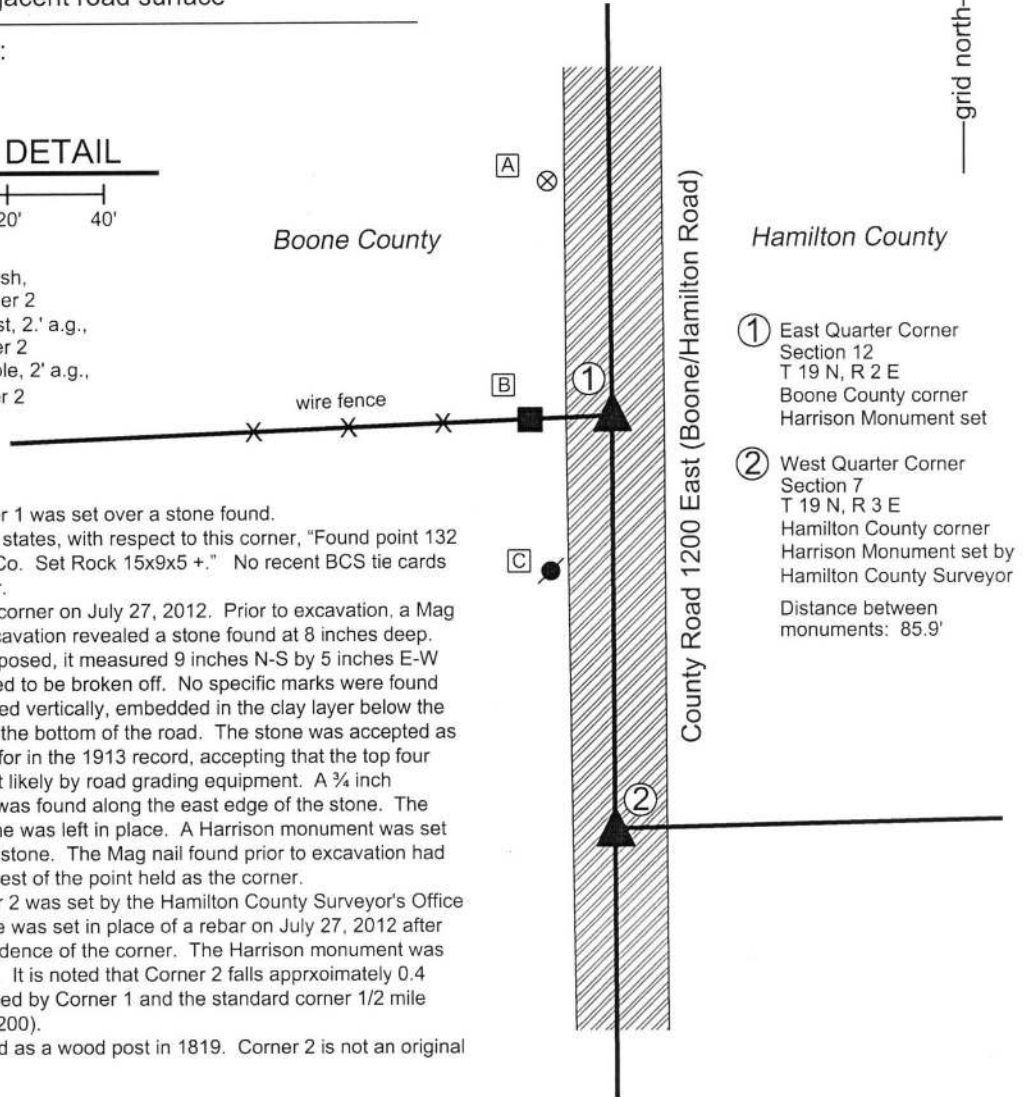
IN02_T19NR2E12_44

CORNER WITNESS DETAIL

SCALE 1" = 40'



- A - Boone County witness mark, flush, 50.6' to Corner 1, 135.4' to Corner 2
- B - Mag nail set in E. side wood post, 2' a.g., 15.3' to Corner 1, 86.8' to Corner 2
- C - Mag nail set in E. side power pole, 2' a.g., 34.8' to Corner 1, 55.3' to Corner 2



The Harrison monument at Corner 1 was set over a stone found. A BCS record dated June 6, 1913 states, with respect to this corner, "Found point 132 links N. of the corner of Hamilton Co. Set Rock 15x9x5 +." No recent BCS tie cards were found referencing this corner.

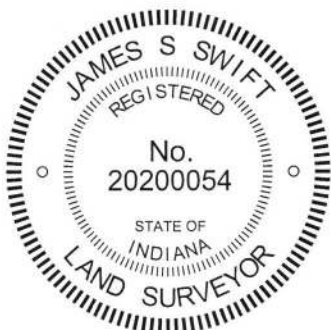
Excavation was performed at this corner on July 27, 2012. Prior to excavation, a Mag nail was found at the surface. Excavation revealed a stone found at 8 inches deep. With the west side of the stone exposed, it measured 9 inches N-S by 5 inches E-W by 11 inches tall. The top appeared to be broken off. No specific marks were found etched on the stone. It was oriented vertically, embedded in the clay layer below the road bed, protruding 2 inches into the bottom of the road. The stone was accepted as being the same monument called for in the 1913 record, accepting that the top four inches have been broken off, most likely by road grading equipment. A 3/4 inch diameter smooth shafted iron pin was found along the east edge of the stone. The iron pin was removed and the stone was left in place. A Harrison monument was set directly over the top, center of the stone. The Mag nail found prior to excavation had been 1.8 feet south and 0.2 foot west of the point held as the corner.

The Harrison monument at Corner 2 was set by the Hamilton County Surveyor's Office in place of a mag spike. The spike was set in place of a rebar on July 27, 2012 after excavation revealed no further evidence of the corner. The Harrison monument was set subsequently, date not known. It is noted that Corner 2 falls approximately 0.4 foot east of the range line as defined by Corner 1 and the standard corner 1/2 mile south (see BCS Corner NE 400-1200).

Corner 1 was originally established as a wood post in 1819. Corner 2 is not an original federal corner.

① East Quarter Corner
Section 12
T 19 N, R 2 E
Boone County corner
Harrison Monument set

② West Quarter Corner
Section 7
T 19 N, R 3 E
Hamilton County corner
Harrison Monument set by
Hamilton County Surveyor
Distance between
monuments: 85.9'



Kenneth E. Hedge
Kenneth E. Hedge, County Surveyor

James S. Swift
James S. Swift, IN LS 20200054
September 11, 2019

Marion Twp
Boone County

Adams Twp
Hamilton Cnty

Section 12 T19N, R2E	Section 7 T19N, R3E
-------------------------	------------------------

SECTION CORNER RECORD

NE 500-1100

BOONE COUNTY SURVEYOR'S OFFICE

State Plane grid coordinates NAD83 (NSRS 2007):

North: 1773226.98 East: 3182760.89 (U.S. survey feet)

Type of monument: 1 inch diameter iron pin in concrete

Depth: flush with adjacent road surface

Indiana tie card references:

IN02_T19NR2E02_80

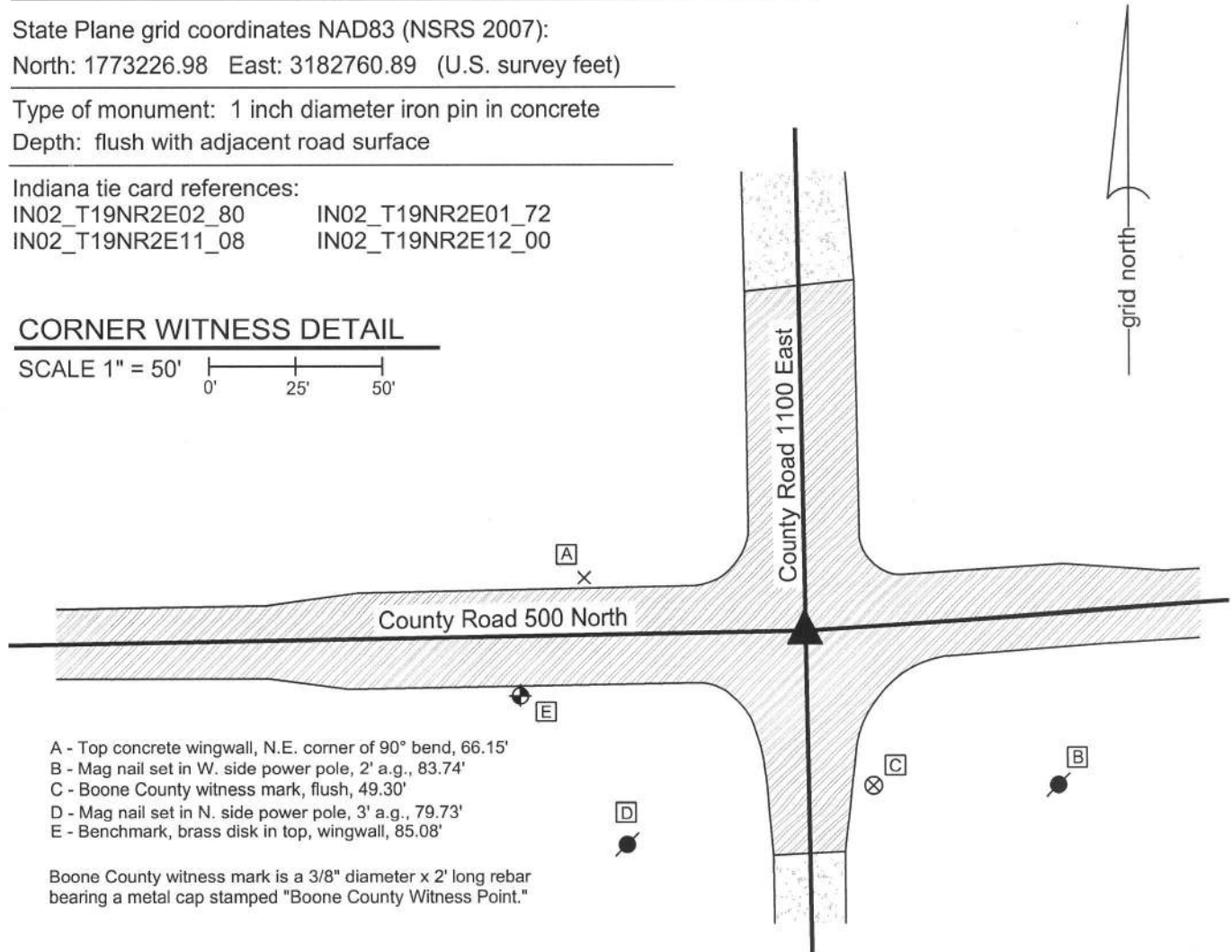
IN02_T19NR2E01_72

IN02_T19NR2E11_08

IN02_T19NR2E12_00

CORNER WITNESS DETAIL

SCALE 1" = 50'



- A - Top concrete wingwall, N.E. corner of 90° bend, 66.15'
- B - Mag nail set in W. side power pole, 2' a.g., 83.74'
- C - Boone County witness mark, flush, 49.30'
- D - Mag nail set in N. side power pole, 3' a.g., 79.73'
- E - Benchmark, brass disk in top, wingwall, 85.08'

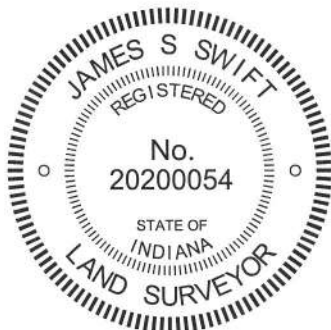
Boone County witness mark is a 3/8" diameter x 2' long rebar bearing a metal cap stamped "Boone County Witness Point."

A harrison monument was set over a stone found in the spring of 2011. The iron pin was set by others, in place of the harrison monument in the spring of 2012 as part of a bridge construction project.

A BCS record of September 23, 1870 states "Reestablished from a rock set where I drove stake when surveying the road. Marked rock that was there and set on top 16.14.12 +." A BCS tie card dated June, 1970 states "found stone. Replace top with Rail, bottom still in place."

This corner was excavated on April 13, 2011. Prior to excavation a section of railroad rail, evidently leaning towards the south, was found in a hole in the asphalt with a 5/8 inch diameter rebar on the east edge of the rail. The rail and rebar were removed and a stone was found at 34 inches deep. The stone is of an odd shape on top, being total of 8 inches N-S by 8 inches E-W, but being in the form of a "T" with a 5 inch arm oriented towards the north. An etched + was clearly visible, situated at the intersection of the N-S arm with the E-W arm. The height of the stone was not measured. As found, the rail was leaning south. Measurements indicated that the bottom of the rail had been below the level of the top of the stone, likely touching it on the north side and the top of the rail was 4 inches south of the etched + mark on the stone. The + mark of the stone was held as marking the corner. The stone was left in place and the harrison monument was set over the etched +. Subsequently the culverts to the immediate north and west of the corner were replaced and the harrison monument was removed during reconstruction of the intersection. The harrison was replaced in the same position by the 1 inch diameter iron pin. It is not documented whether the stone was left in place.

This corner was originally established as a wood post in June, 1821.



Kenneth E. Hedge
 Kenneth E. Hedge, County Surveyor

James S. Swift
 James S. Swift, IN LS 20200054
 February 6, 2013

Marion Township

Section 2 T19N, R2E	Section 1 T19N, R2E
Section 11 T19N, R1E	Section 12 T19N, R2E

PHOTOGRAPHIC DOCUMENTATION

Date of photography: April 13, 2011

View of the top of the railroad rail as found.



The stone found at 34 inches deep.



The stone found at 34 inches deep.



Close-up of the stone found. Note the etched + at the "T" intersection of the two parts of the stone.



For details and documentation, refer to related sheet "Section Corner Record."

SECTION CORNER RECORD

NE 500-1150

BOONE COUNTY SURVEYOR'S OFFICE

State Plane grid coordinates NAD83 (NSRS 2007):

North: 1773405.70 East: 3185457.32 (U.S. survey feet)

Type of monument: Harrison, 4" disk 'Section Corner'

Depth: One inch below adjacent road surface

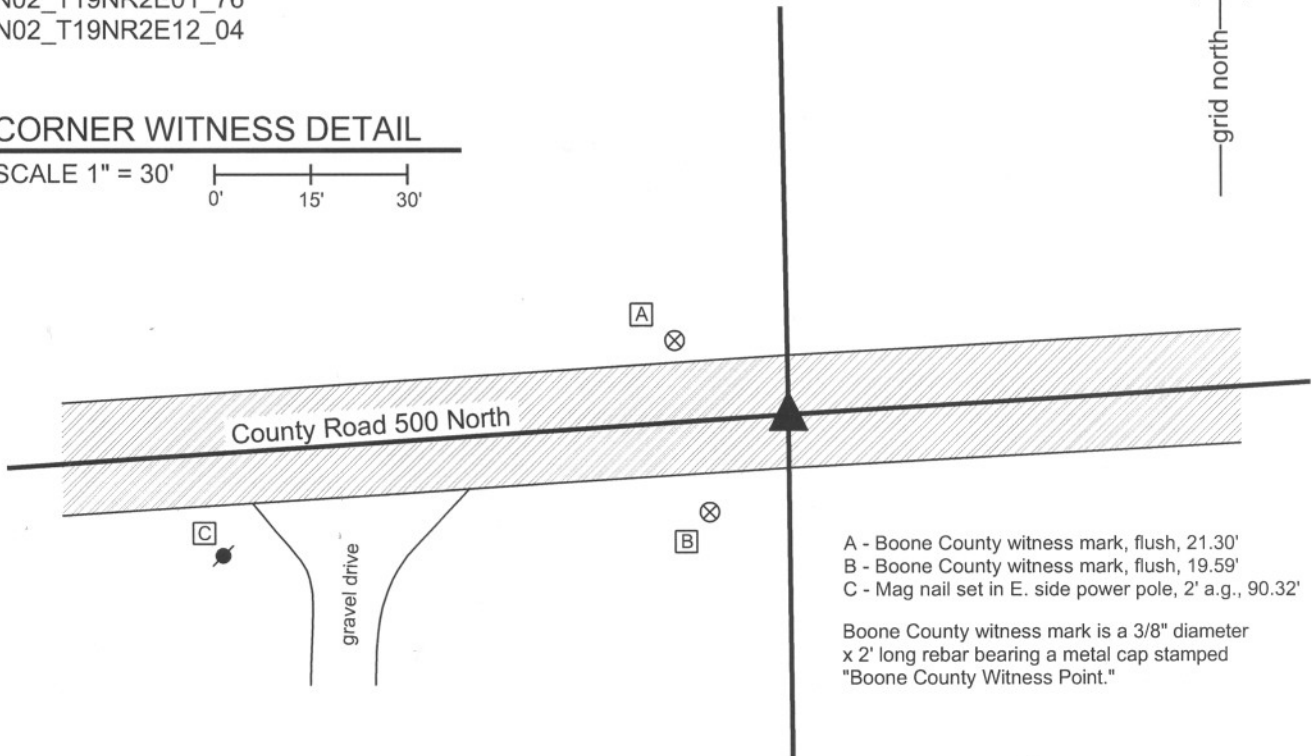
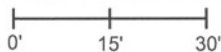
Indiana tie card references:

IN02_T19NR2E01_76

IN02_T19NR2E12_04

CORNER WITNESS DETAIL

SCALE 1" = 30'



- A - Boone County witness mark, flush, 21.30'
- B - Boone County witness mark, flush, 19.59'
- C - Mag nail set in E. side power pole, 2' a.g., 90.32'

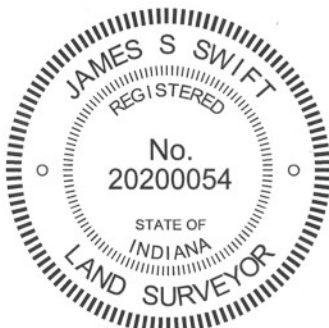
Boone County witness mark is a 3/8" diameter x 2' long rebar bearing a metal cap stamped "Boone County Witness Point."

The harrison monument was set in place of a stone and a section of railroad rail found.

A BCS record of September 23, 1870 states "Reestablished from stumps of trees. Set two Rocks One 13.10.6 +. Top One 14.8.7 +." BCS field notes dated June, 1970 for which no tie card was found state "Found stone set rail." A BCS tie card dated June 19, 1974 states "Found Stone & Rail."

This corner was excavated on September 27, 2011. Prior to excavation a section of railroad rail was found at 12 inches deep in a hole in the asphalt. The rail appeared to be leaning north. Excavation revealed a stone found at 27 inches deep. The rail was extended over the west edge of the center of the rock. The stone appeared to be knocked over. The stone was removed and measured to be 14 inches by 10 inches by 8 inches. As stood up, it would have been 14 inches tall. The stone does not precisely match the dimensions of either rock described in the 1870 record though is close to the dimensions of the record lower stone. No specific markings were identified on the rock. No other evidence of the corner was found in a 4 foot by 4 foot square hole centered on the top of the rail as found. The stone and railroad rail were both removed and a harrison monument was set in the position of the top of the rail as originally found, slightly west of the top, center of the found stone.

This corner was originally established as a wood post in June, 2011



Kenneth E. Hedge
Kenneth E. Hedge, County Surveyor

James S. Swift
James S. Swift, IN LS 20200054
March 1, 2012

Marion Twp

Section 1
T19N, R2E

Section 12
T19N, R2E

PHOTOGRAPHIC DOCUMENTATION

Date of photography: April 13, 2011

View of the railroad rail, as found.



View of the stone as first exposed.



View of the stone more fully exposed.



View of the stone removed from the road bed.



For details and documentation, refer to related sheet "Section Corner Record."

SECTION CORNER RECORD

BOONE COUNTY SURVEYOR'S OFFICE

NE 500-1200

State Plane grid coordinates NAD83 (CORS96):

North: 1773569.68 East: 3188150.52 (U.S. survey feet) Corner 1

North: 1773472.93 East: 3188153.23 (U.S. survey feet) Corner 2

Type of monument: Harrison, 4" disk 'Section Corner'

Depth: One inch below adjacent road surface (Corner 1) Flush (Corner 2)

Indiana tie card references:

IN02_T19NR2E01_80 IN02_T19NR3E06_72

IN02_T19NR2E12_08 IN02_T19NR3E07_00

CORNER WITNESS DETAIL

SCALE 1" = 50'

- A - Boone County witness mark, flush, 30.59' to corner 1, 117.14' to corner 2
- B - Mag nail in S. side power pole, 2' a.g., 60.74' to corner 1, 156.80' to corner 2
- C - Boone County witness mark, flush, 65.31' to corner 1, 43.01' to corner 2
- D - Mag nail in N. side power pole, 2' a.g., 124.95' to corner 1, 57.48' to corner 2
- E - Mag nail in E. side power pole, 2' a.g., 60.74' to corner 1, 38.77' to corner 2

Boone County witness mark is a 3/8" diameter x 2' long rebar bearing a metal cap stamped "Boone County Witness Point."

The harrison monument at corner 1 was set over a stone found. The harrison monument at corner 2 was found present and left undisturbed.

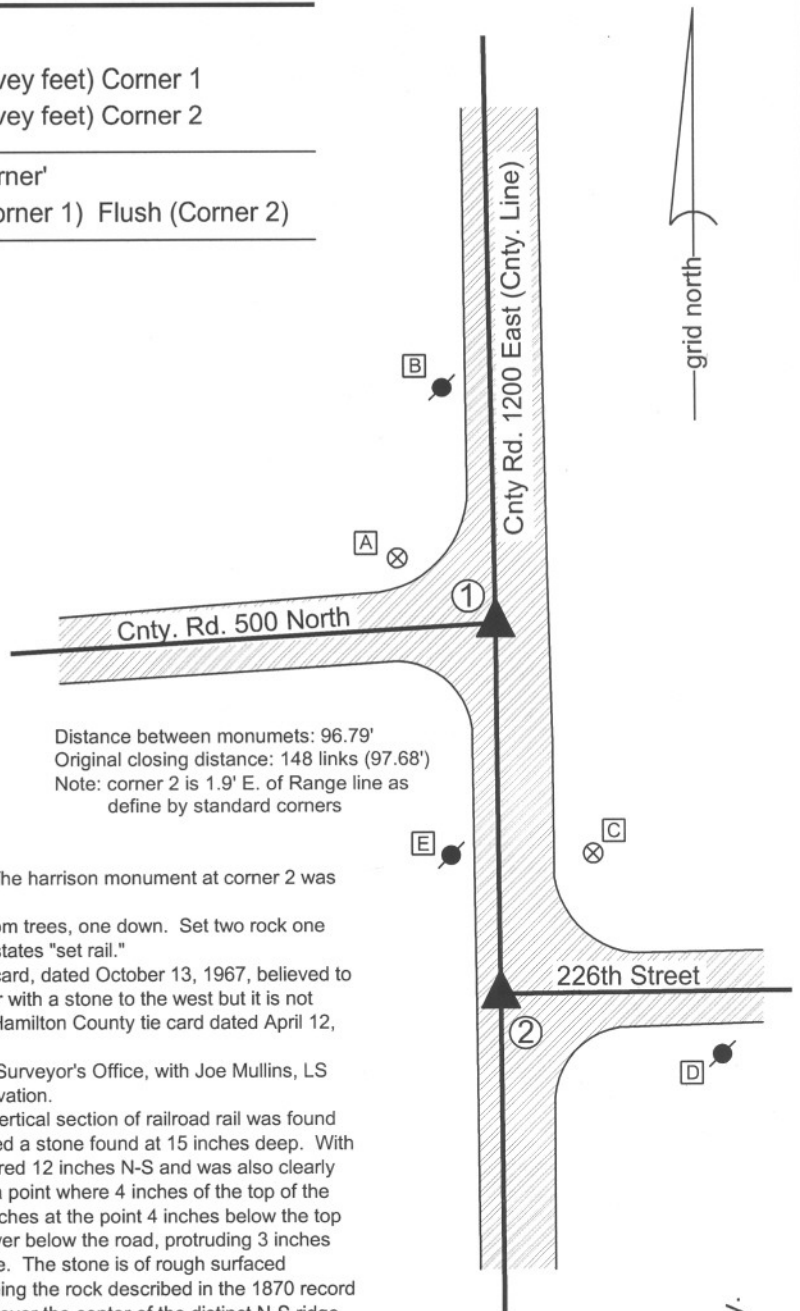
A BCS record of September 21-22, 1870 states "Reestablished from trees, one down. Set two rock one 7.6.5 + Top one 19.12.6 +." A BCS tie card dated June 19, 1974 states "set rail."

A BCS tie card dated June 19, 1974 states "set rail." Another tie card, dated October 13, 1967, believed to originate in the Hamilton County Surveyor's Office, shows a corner with a stone to the west but it is not clear which of the two corners is the subject of this document. A Hamilton County tie card dated April 12, 2004 states "Harrison set at surface over rebar."

Corner 1 was excavated in cooperation with the Hamilton County Surveyor's Office, with Joe Mullins, LS and other representatives of that office present at the time of excavation.

Corner 1 was excavated on July 23, 2012. Prior to excavation a vertical section of railroad rail was found at 8 inches deep in a large hole in the asphalt. Excavation revealed a stone found at 15 inches deep. With 12 inches of the stone exposed on the east side, the stone measured 12 inches N-S and was also clearly taller. The east-west dimension was measured to be 5 inches at a point where 4 inches of the top of the stone were exposed. It is noted that the N-S dimension was 10 inches at the point 4 inches below the top of the stone. The stone was vertical and embedded in the clay layer below the road, protruding 3 inches into the bottom of the road bed. The stone has a distinct N-S ridge. The stone is of rough surfaced material and no specific marks were found. It was accepted as being the rock described in the 1870 record and held as marking the corner. The harrison monument was set over the center of the distinct N-S ridge. The railroad rail, removed during excavation, had been 2.7 feet east and 1.1 foot north of the stone.

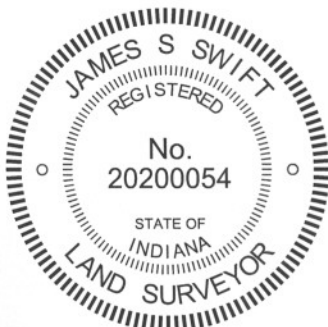
The harrison monument at the Hamilton County corner is 1.9 feet east of the range line as defined by the standard corners. The Hamilton County Surveyor's Office opted to leave the monument undisturbed and not excavate for additional evidence.



Distance between monuments: 96.79'
Original closing distance: 148 links (97.68')
Note: corner 2 is 1.9' E. of Range line as define by standard corners

Marion Twp.
Boone Cnty.

Adams Twp.
Hamilton Cnty.



Kenneth E. Hedge
Kenneth E. Hedge, County Surveyor

James S. Swift
James S. Swift, IN LS 20200054
January 15, 2013

Section 1 T19N, R2E	Section 6 T19N, R3E
Section 12 T19N, R2E	Section 7 T19N, R3E

PHOTOGRAPHIC DOCUMENTATION

Date of photography: July 23, 2012

View of the stone as first exposed.



View of the stone from the east.



View of the stone from above.



View of the stone from above and south.



The stone and area of excavation from the north.



The stone and area of excavation from the east.



For details and documentation, refer to related sheet "Section Corner Record."