

SECTION CORNER RECORD

BOONE COUNTY SURVEYOR'S OFFICE

NE 400-500

State Plane grid coordinates NAD83 (CORS96):
 North: 1767069.82 East: 1767069.82 (U.S. survey feet)

Type of monument: Harrison, 4" disk 'Section Corner'
 Depth: One inch below adjacent road surface

Indiana tie card references:
 IN02_T19NR1E11_80 IN02_T19NR1E12_72
 IN02_T19NR1E14_08 IN02_T19NR1E13_00

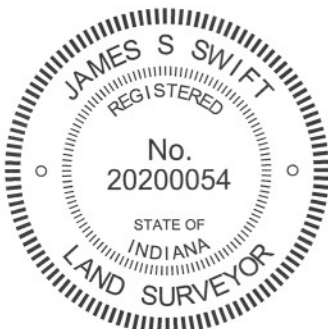
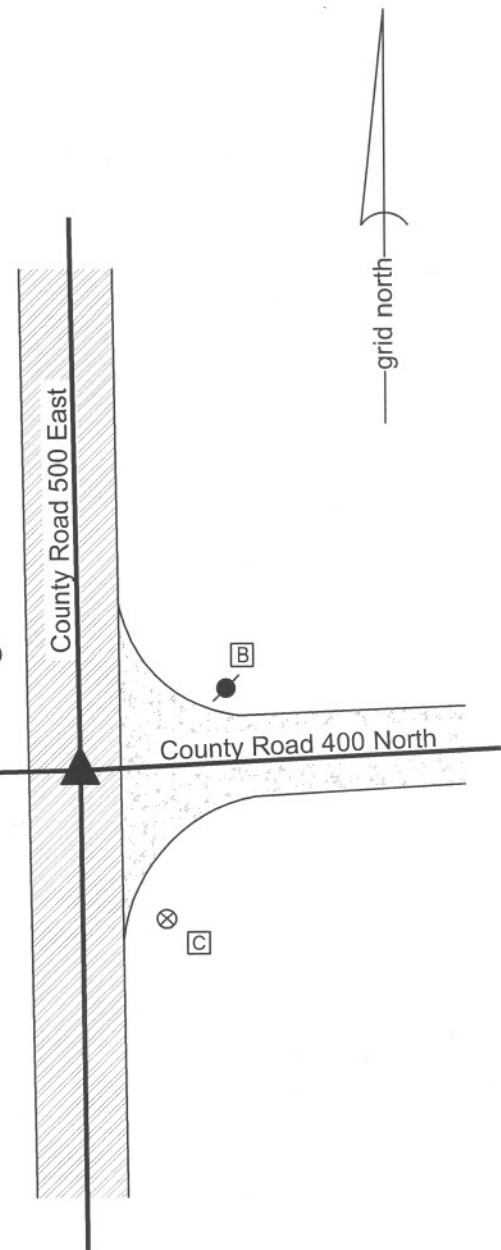
CORNER WITNESS DETAIL

SCALE 1" = 40'

- A - Boone County witness mark, flush, 30.34'
- B - Mag nail set in W. side power pole, 2' a.g. 33.24'
- C - Boone County witness mark, flush, 35.70'

Boone County witness mark is a 3/8" diameter x 2' long rebar bearing a metal cap stamped "Boone County Witness Point."

The harrison monument was set over a stone found.
 A BCS record of June 26-27, 1865 states Reestablished from Oak B.T. Set two rocks one 5.3.2 in (two notches in sharp corner). Top rock 13.12.6 in. + on side."
 A BCS tie card dated August 15, 1868 states "no stone." A BCS tie card dated May 29, 1991 shows the corner as a rail found. A BCS tie card dated August 3, 2005 shows the corner as a harrison monument with no documentation of source.
 This corner was excavated on April 6, 2011. Prior to excavation a harrison monument was found at the surface. Excavation revealed a railroad rail found at 5 inches deep, below the harrison. It is most likely that the rail was set in association with the creation of the 1968 tie card. Further excavation revealed the stone described in the 1865 record at 22 inches deep. The stone measures 12 inches E-W by 6 inches N-S by 13 inches tall. The rock has a rough surface. A vague chiseled + was evident on the N. side. The stone was left in place and the harrison monument was set over the top of the stone, in line with the chiseled +. The harrison monument and railroad rail, both removed during excavation, had been 0.9 foot north and 1.5 feet west of the stone.
 This corner was originally established as a wood post in June, 1822.



Kenneth E. Hedge
 Kenneth E. Hedge, County Surveyor

James S. Swift
 James S. Swift, IN LS 20200054
 March 1, 2012

Clinton Twp	Section 11 T19N, R1E	Section 12 T19N, R1E
Center Twp	Section 14 T19N, R1E	Section 13 T19N, R1E

PHOTOGRAPHIC DOCUMENTATION

Date of photography: April 6, 2011

View from the west looking across the stone (in shadows) and east along County Road 400 North.



View of the stone as first exposed.



The stone from the north.



The stone from the south.



For details and documentation, refer to related sheet "Section Corner Record."

SECTION CORNER RECORD

NE 400-550

BOONE COUNTY SURVEYOR'S OFFICE

State Plane grid coordinates NAD83 (CORS96):

North: 1767199.29 East: 3153454.86 (U.S. survey feet)

Type of monument: Harrison, 4" disk 'Section Corner'

Depth: six inches below adjacent gravel road surface

Indiana tie card references:

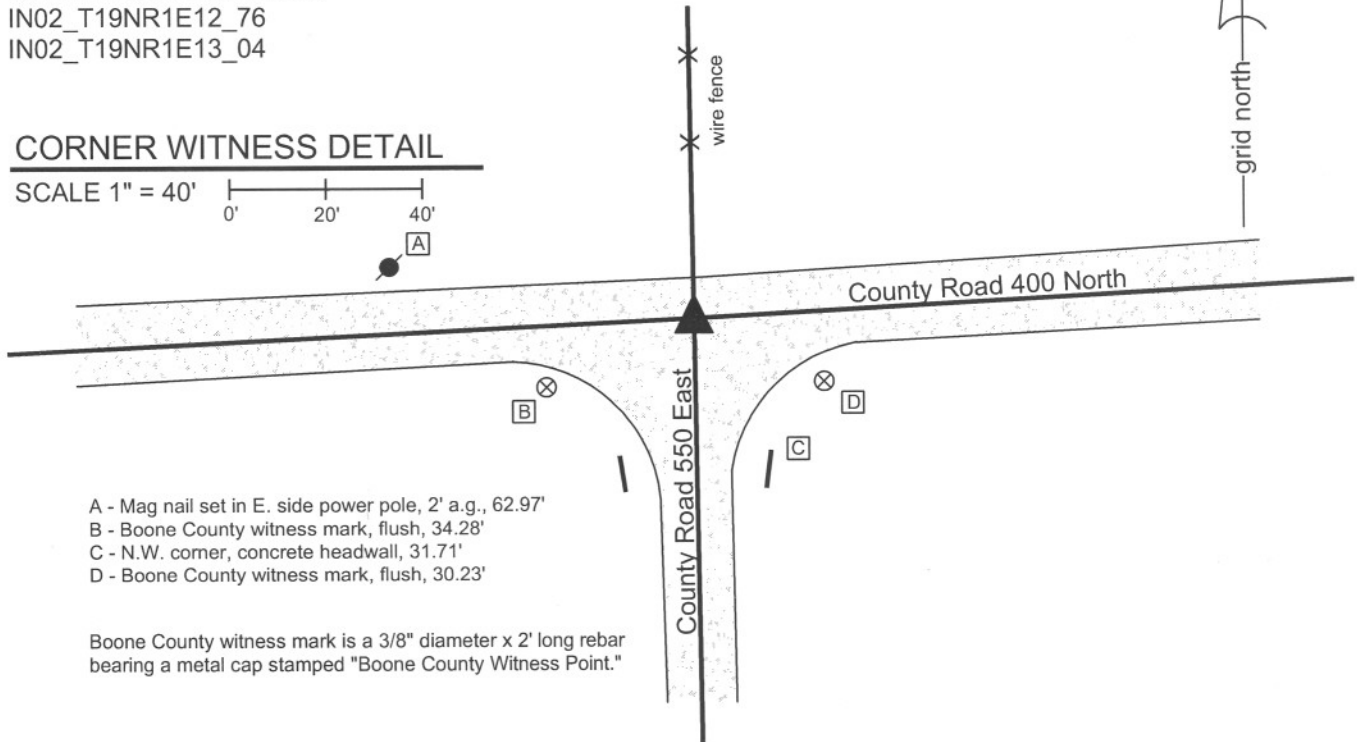
IN02_T19NR1E12_76

IN02_T19NR1E13_04

CORNER WITNESS DETAIL

SCALE 1" = 40'

0' 20' 40'



- A - Mag nail set in E. side power pole, 2' a.g., 62.97'
- B - Boone County witness mark, flush, 34.28'
- C - N.W. corner, concrete headwall, 31.71'
- D - Boone County witness mark, flush, 30.23'

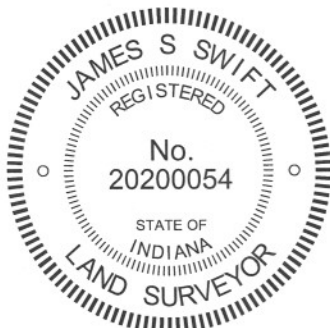
Boone County witness mark is a 3/8" diameter x 2' long rebar bearing a metal cap stamped "Boone County Witness Point."

The harrison monument was set over a stone found.

A BCS record of December 11, 1871 states "Reestablished from North Ash. Set Rough Rock 20.10. 3 to 7th +." A BCS Record of June 29, 1889 states "Straightened rock here. Top broken off. S.W. tree here (stump)." A BCS tie card dated August 22, 1974 states "No stone found." A BCS tie card dated May 22, 1975 states "No stone found - set rod." A BCS tie card dated July 27, 2005 shows the corner as a harrison monument with no documentation of source.

This corner was excavated on March 14, 2011. Prior to excavation a harrison monument was found at 2 inches deep. Excavation revealed a stone found at 12 inches deep. The stone measured 10 inches E-W by 7 inches N-S by 9 inches tall. The top half of the stone was in the fill material of the road and the bottom half was embedded in the clay layer below the road bed. The stone was removed and another stone was found directly below it. The lower stone measured 12 inches tall at the northwest edge. With 8 inches of the top of the stone exposed, it measured approximately 10 inches E-W by 8 inches N-S. The stone was definitely of a rough surface. Another smaller stone was found next to it on the north side. The rough stone appeared to be the same stone described in the 1871 record, less the broken top per the 1889 record. If this stone were 20 inches tall it would protrude approximately 3 - 4 inches out of the clay layer into the road bed, which is consistent with other found stones from the same era. The "rough" qualities of the stone make it hard to measure and the 10 by 8 measurements are quite close to the record dimensions of 10 by 3 to 7th. This stone was accepted as marking the corner and was left in place. The top 3 inches of the stone were encased in concrete and the harrison monument was set over the top, center of the stone. The harrison monument, removed during excavation, had been 0.5 foot south and 0.5 foot west of the stone.

This corner was originally established as a wod post in June, 1822.



Kenneth E. Hedge
Kenneth E. Hedge, County Surveyor

James S. Swift
James S. Swift, IN LS 20200054
March 1, 2012

Clinton Twp

Section 12
T19N, R1E

Center Twp

Section 13
T19N, R1E

PHOTOGRAPHIC DOCUMENTATION

Date of photography: March 14, 2011

The first stone found from the above and west.



The lower, record, stone from above and west.



View from the west, looking across the first stone found and east along County Road 400 North.



The lower, record, stone from above and south.



The lower, record, stone from above.



For details and documentation, refer to related sheet "Section Corner Record."

SECTION CORNER RECORD

NE 400-600

BOONE COUNTY SURVEYOR'S OFFICE

State Plane grid coordinates NAD83 (NSRS 2007):

Corner 1: North: 1767343.74 East: 3156123.38 (U.S. survey feet)
 Corner 2: North: 1767394.12 East: 3156121.99 (U.S. survey feet)

CORNER WITNESS DETAIL

SCALE 1" = 40'
 0' 20' 40'

Corner 1:

Type of monument: Harrison, 4" disk 'Section Corner'
 Depth: One inch below adjacent road surface

Corner 2:

Type of monument: Harrison, 4" disk 'Section Corner'
 Depth: One inch below adjacent road surface

Indiana tie card references:

IN02_T19NR1E12_80 IN02_T19NR1E13_08
 IN02_T19NR2E07_72 IN02_T19NR2E18_00

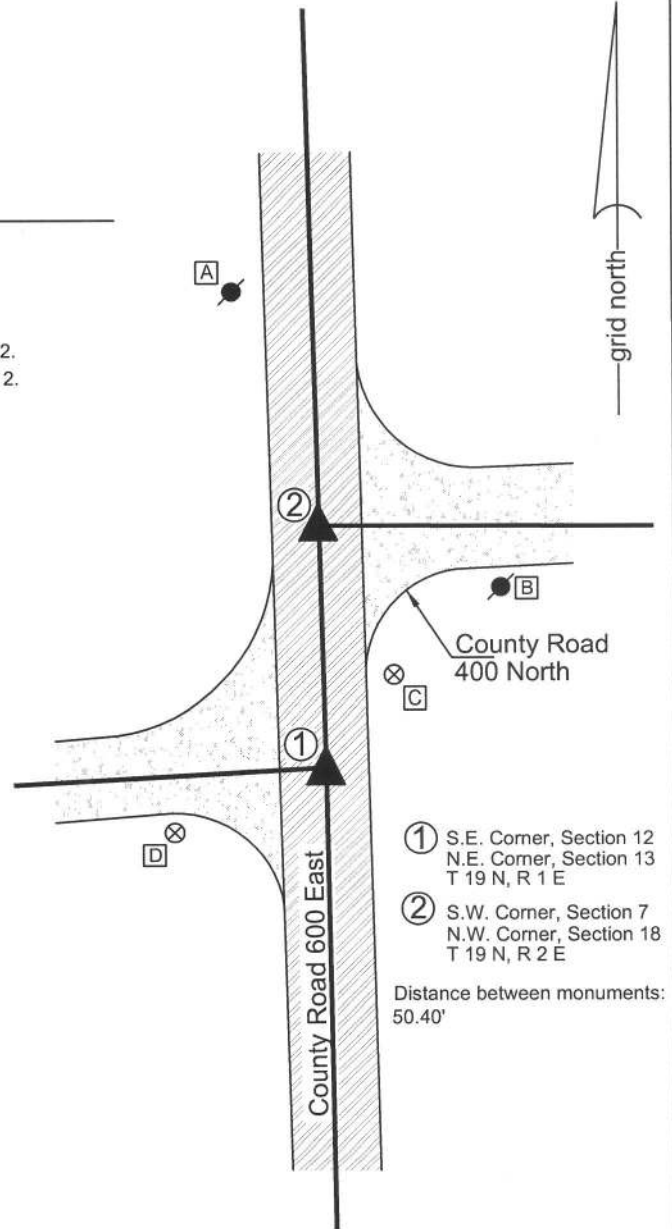
- A - Mag nail set in S. side power pole, 2' a.g., 98.81' to corner 1, 49.84' to corner 2.
- B - Mag nail set in W. side power pole, 2' a.g., 51.09' to corner 1, 38.56' to corner 2.
- C - Boone County witness mark, flush, 23.64' to corner 1, 35.13' to corner 2.
- D - Boone County witness mark, flush, 34.16' to corner 1, 70.56' to corner 2.

Boone County witness mark is a 3/8" diameter x 2' long rebar bearing a metal cap stamped "Boone County Witness Point."

A harrison monument was set in place of a stone at corner 1 and over a stone at corner 2.

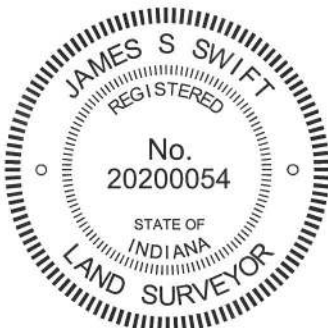
A BCS record of November 7, 1872 pertaining to corner 2 states "Reestablished from the trees 75 lks North of corner Sects 12 & 13. Set a Rock 22.16 by 10 marked +." A BCS tie card dated July 28, 2005 shows both corners as harrison monuments with no documentation of source.

These corners were excavated on June 16, 2010. Prior to excavation, harrison monuments were visible at the surface of the road. Corner 2 was excavated first. Excavation revealed no further evidence directly below the harrison monument, but the record stone described in 1872 was found slightly south and west of the harrison. The stone is embedded in the clay layer below the road at 17 inches deep and measures 22 inches tall by 17 inches N-S by 10 inches E-W with a clearly visible mark etched on the top near the east side of the stone. The mark appears to be a "+". The E-W part of the "+" is fully visible but only the N section of the N-S part is visible. While the stone at corner 2 was still exposed, corner 1 was excavated. Excavation at this corner revealed a stone found at distance slightly longer than the reported 75 links. This stone was also embedded in the clay layer below the road. The stone was removed and measured, being 4 inches tall by 6 inches E-W by 9 inches N-S. The harrison monument at corner 2 was set directly over the etched mark on the top of the stone. The harrison monument at corner 1 was set in place of the approximate top, center of the position of the stone and specifically on the range line as determined by corner 2. Corner 1 is 0.3 foot north of the position of the former harrison monument and corner 2 is 0.7 feet south and 0.3 feet west of the position of the former harrison monument. It is noted that the original recorded closing distance between the corners is 77 links (50.8'), the 1872 record reports 75 links (49.5') links and the distance measured is 50.40 feet. Corner 1 was originally established as a wood post in 1819. Corner 2 was originally established as a wood post in 1821.



- ① S.E. Corner, Section 12
N.E. Corner, Section 13
T 19 N, R 1 E
- ② S.W. Corner, Section 7
N.W. Corner, Section 18
T 19 N, R 2 E

Distance between monuments:
50.40'



Kenneth E. Hedge
 Kenneth E. Hedge, County Surveyor

James S. Swift
 James S. Swift, IN LS 20200054
 July 25, 2011

	Clinton Twp	Marion Twp
Clinton Twp	Section 12 T19N, R1E	Section 7 T19N, R2E
Center Twp	Section 13 T19N, R1E	Section 18 T19N, R2E

PHOTOGRAPHIC DOCUMENTATION

Date of photography: June 16, 2010

The stone at the closing corner (corner 2) from above and west.



The stone at corner 2 from above and south.



View from the west, looking across the stone at corner 2 and east along County Road 400 North.



The stone at corner 2 from above. Note the etched mark on the top of the stone.



The stone at the standard corner (corner 1) from above and east.



For details and documentation, refer to related sheet "Section Corner Record."

SECTION CORNER RECORD

BOONE COUNTY SURVEYOR'S OFFICE

NE 450-500

State Plane grid coordinates NAD83 (CORS96):

North: 1769714.39 East: 3150751.58 (U.S. survey feet)

Type of monument: Harrison, 4" disk 'Section Corner'

Depth: One inch below adjacent road surface

Indiana tie card references:

IN02_T19NR1E11_44

IN02_T19NR1E12_36

CORNER WITNESS DETAIL

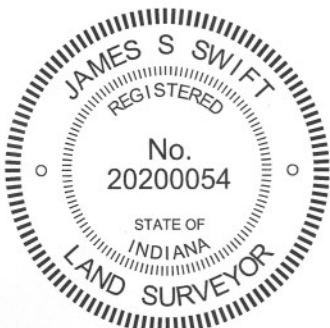
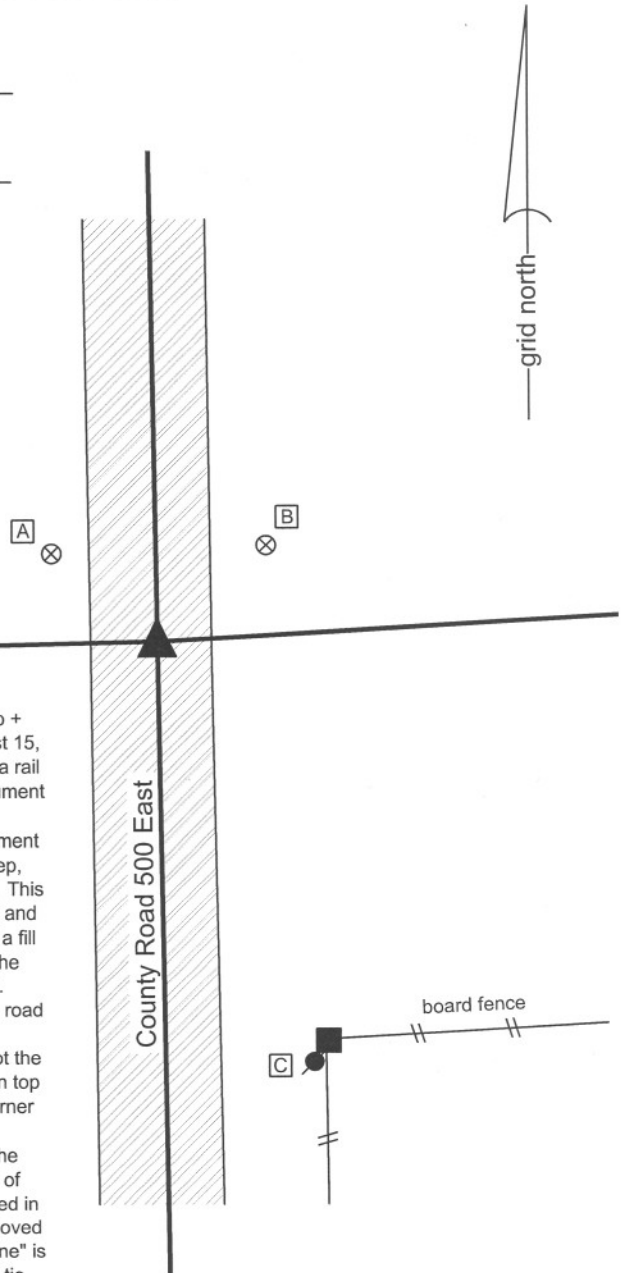
SCALE 1" = 30'

- A - Boone County witness mark, flush, 21.44'
- B - Boone County witness mark, flush, 22.59'
- C - Mag nail set in N. side power pole, 2' a.g., 68.80'

Boone County witness mark is a 3/8" diameter x 2' long rebar bearing a metal cap stamped "Boone County Witness Point."

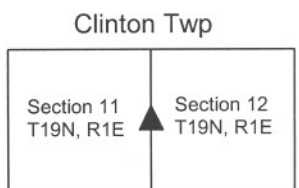
The harrison monument was set in place of two stones found. A BCS record of June 26-27 states Set Rock 17 by 15 in. (is rounding) mark on top + on side Brick Bat marked "+" on end placed under it." A BCS tie card dated August 15, 1968 states "No Stone." A BCS tie card dated May 30, 1991 shows the corner as a rail found. A BCS tie card dated August 3, 2005 shows the corner as a harrison monument with no documentation of source.

This corner was excavated on July 12, 2011. Prior to excavation a harrison monument was found at the surface. Excavation revealed a railroad rail found at 7 inches deep, below the harrison. Further excavation revealed a stone found at 13 inches deep. This stone was 10 inches tall by 5 inches E-W by 9 inches N-S. The stone was vertical and embedded in a clay-like substance, though the substance appeared to be more of a fill material providing a base for the road bed than the typical clay layer found below the road bed. The stone was removed and another stone was found directly below it. The lower stone was also vertical and was clearly embedded in the clay below the road bed. The lower stone measured 11 inches tall by 6 inches E-W by 9 inches N-S. Neither of the stones bore evidence of specific markings. The found stones are not the dimensions described in the 1865 record. They were, however, vertical, directly on top of one another and evidently set as corner markers. No further evidence of the corner was found in a area of excavation being 5x5 foot square, centered on the found harrison monument. It is not known why the 1865 record stone was not found. The presence of the clay like substance which appears to be a fill material for the base of the road may also explain the lack of the record stone. Perhaps excavation occurred in this area in preparation for the installation of the road base and the stone was removed as part of that process. In any case, the reference on the 1968 tie card of "no stone" is clearly erroneous. It is most likely that the rail was set in association with the 1968 tie card. The two vertical stones were accepted as the best available evidence of the corner. The stones were removed and a harrison monument was set in the position of the top, center of the top stone. The found harrison monument and railroad rail, both removed during excavation, had been 1 foot south and 0.7 foot west of the stones. This corner was originally established as a wood post in June, 1822.



Kenneth E. Hedge
 Kenneth E. Hedge, County Surveyor

James S. Swift
 James S. Swift, IN LS 20200054
 March 1, 2012



PHOTOGRAPHIC DOCUMENTATION

Date of photography: July 12, 2011

View of the upper stone as first exposed.



View of the upper stone as fully exposed.



View from the north, looking across the upper stone and south along County Road 500 East.



View of the lower stone as first exposed.



View of the lower stone partially exposed. Note also the upper stone on the pavement to the right.



For details and documentation, refer to related sheet "Section Corner Record."

SECTION CORNER RECORD

NE 450-600

BOONE COUNTY SURVEYOR'S OFFICE

State Plane grid coordinates NAD83 (NSRS 2007):

Corner 1: North: 1770006.12 East: 3156050.22 (U.S. survey feet)

Corner 2: North: 1770019.32 East: 3156050.06 (U.S. survey feet)

Corner 1

Type of monument: Harrison, 4" disk 'Section Corner'

Depth: flush with adjacent road surface

Corner 2

Type of monument: Harrison, 4" disk 'Section Corner'

Depth: flush with adjacent road surface

Indiana tie card references:

IN02_T19NR1E12_44

IN02_T19NR1E07_36

The harrison monuments were set over stones found.

A BCS record dated August 26-29, 1868 references the closing corner (corner 2) as witnessed by two walnut trees. This record does not call for a monument at the corner. BCS records of December 11-12, 1871 state "Established from Walnuts of former survey Set Rock 25.13.7 +. Reestab D Sect 12, 20 links South of H. Rock 11.7.4 +." and "Reestablished 20 links south of H Sect. 7. Set Rock 11.7.4 +." A BCS record of October 28, 1891 states "Found Rock and both witnesses for 'H' Sect. 7, R2E. Reest cor D 20 links South of 'H'. Found old rock + 11.7.4 which had been removed and replaced it also placed above it another rock 20.11.10 at cor. Mk 1/4 on W. side mk X on S. side." A BCS tie card dated August 1, 2005 shows both corners as harrison monuments, 10.55 feet apart, with no documentation of source.

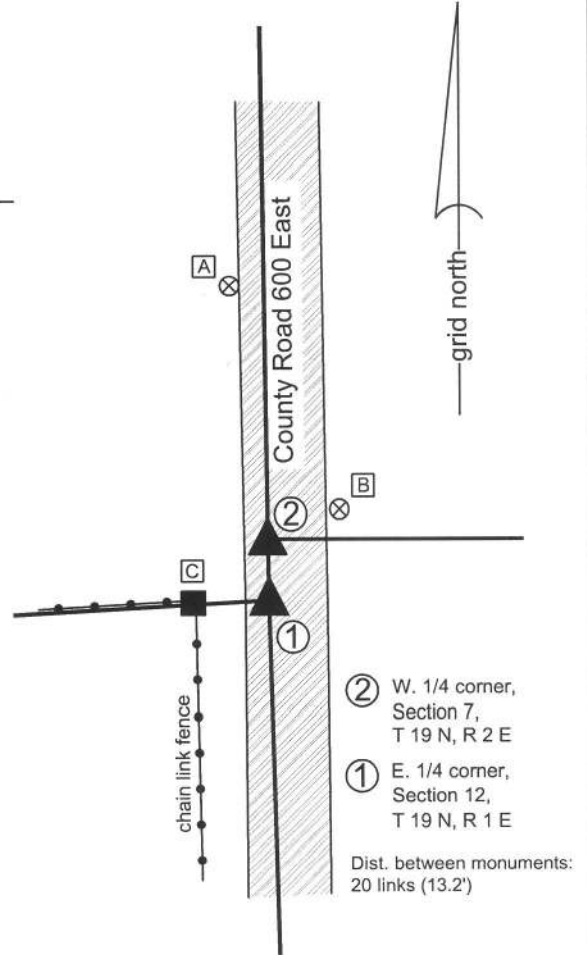
These corners were excavated on May 27, 2010. Prior to excavation harrison monuments were found in agreement with the 2005 tie cards. Excavation revealed the record stones as described in the 1871 records. The stone at the standard corner (corner 1, called corner D in the records for section 12-19N-R1E) was found at 18 inches deep, 4.3 feet west and 0.9 foot south of the southerly of the two harrison monuments. The stone appeared to have been slightly disturbed, having apparently been broken on the west side and possibly leaned towards the north. The etched "+" on the south side was clearly visible. The mark on the west side was not visible. With 15 inches of the stone exposed, it measured 10 inches N-S by 11 inches E-W, with a sharp N-S ridge. As situated, the stone had a distinct high point at the south end of the N-S ridge. If the stone had been hit from the south and leaned towards the north, as it appeared to have been, it appears that the approximate center of the ridge, prior to being shifted, would have been at approximately the same position as the high point and south end of the ridge, after being shifted.

The stone at the closing corner (corner 2, called corner H in the records for section 7, T19N, R2E) was found at 20 links (13.2 feet) north of the stone at the standard corner, at 10 inches below grade. With 6 inches exposed the stone measures 11 inches N-S by 6 inches E-W with a clearly visible "+" etched on the east side. The approximate top, center point of the stone falls at the record 20 links north of the high point and south end of the N-S ridge on the southerly stone. Immediately post excavation, a railroad spike was set over the top, center of the stone. The road was repaved in the fall of 2010. On May 27, 2011, the harrison monument at corner 1 was raised to the grade with road and a harrison monument was set at corner 2. Both stones were left in place and the harrison monuments are above the stones. The harrison monument shown on the 2005 tie card for corner 2 was 4.3 feet east and 1.8 feet south of the stone.

Corner 1 was originally established as a wood post in 1819. Corner 2 is not an original federal corner.

CORNER WITNESS DETAIL

SCALE 1" = 40'



A - Boone County witness mark, flush, 74.33' to corner 1, 61.20' to corner 2.

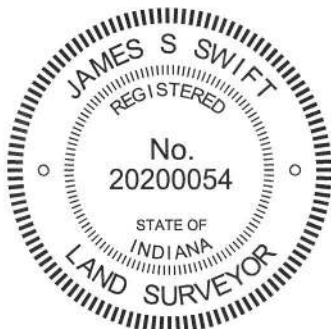
B - Boone County witness mark, flush, 27.26' to corner 1, 18.99' to corner 2.

C - Mag nail set in N. side wood post, 10 in. a.g., 17.15' to corner 1, 21.35' to corner 2.

Boone County witness mark is a 3/8" diameter x 2' long rebar bearing a metal cap stamped "Boone County Witness Point."

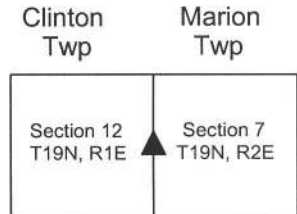
- ② W. 1/4 corner, Section 7, T 19 N, R 2 E
- ① E. 1/4 corner, Section 12, T 19 N, R 1 E

Dist. between monuments: 20 links (13.2')



Kenneth E. Hedge
Kenneth E. Hedge, County Surveyor

James S. Swift
James S. Swift, IN LS 20200054
July 25, 2011



PHOTOGRAPHIC DOCUMENTATION

Date of photography: May 27, 2010

View of the stone at the standard corner (corner 1) from above and west.



View of the stone at corner 1, showing the etched mark on the south side of the stone.



View from above corner 2, looking north along County Road 600 East.



View of the stone at the closing corner (corner 2), showing the etched mark on the east side of the stone.



View of the stone at corner 2 from above and north.



For details and documentation, refer to related sheet "Section Corner Record."

SECTION CORNER RECORD

BOONE COUNTY SURVEYOR'S OFFICE

NE 500-500

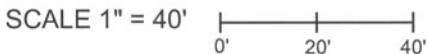
State Plane grid coordinates NAD83 (CORS96):
 North: 1772347.94 East: 3150712.09 (U.S. survey feet)

Type of monument: Harrison, 4" disk 'Section Corner'
 Depth: One inch below adjacent road surface

Indiana tie card references:
 IN02_T19NR1E02_80 IN02_T19NR1E01_72
 IN02_T19NR1E11_08 IN02_T19NR1E12_00



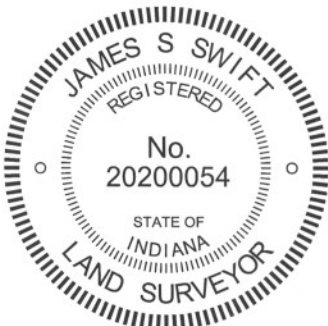
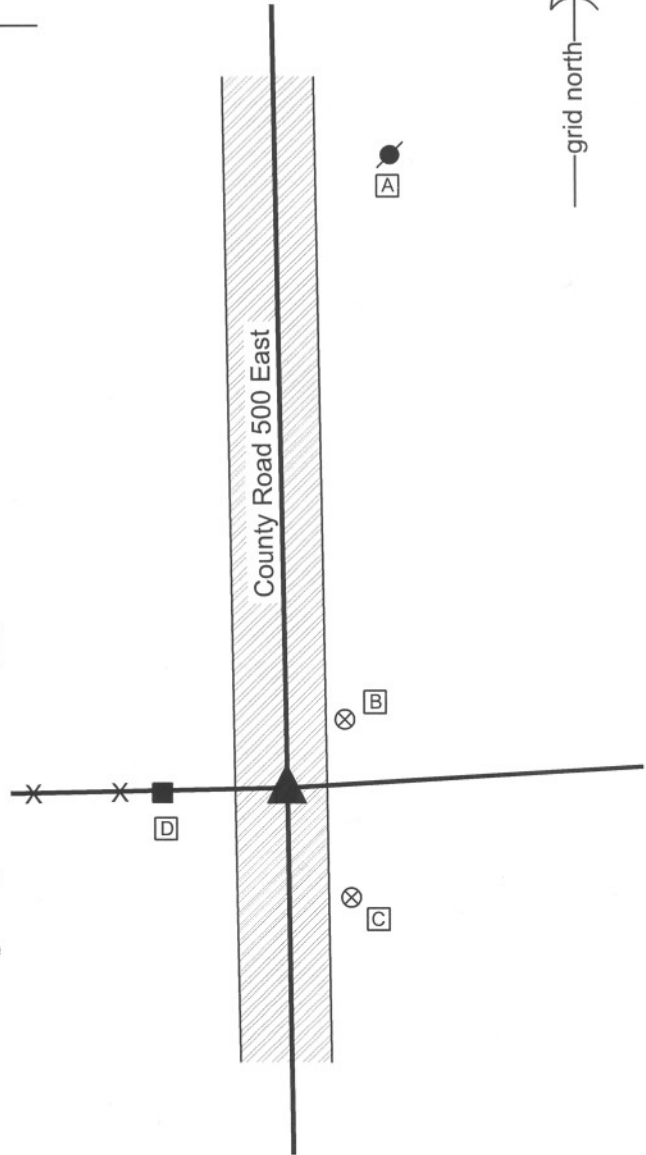
CORNER WITNESS DETAIL



- A - Mag nail set in S. side power pole, 2' a.g., 131.71'
- B - Boone County witness mark, flush, 18.57'
- C - Boone County witness mark, flush, 26.44'
- D - Mag nail set in E. side wood post, 2' a.g., 24.76'

Boone County witness mark is a 3/8" diameter x 2' long rebar bearing a metal cap stamped "Boone County Witness Point."

The harrison monument was set over a stone found.
 A BCS record of June 26-27 states "Think I found from where one tree stood but had been set out of its place by road hands about two days before. S.W. Wiley placed rock at the corner."
 A BCS tie card August 15, 1868 states "no stone." A BCS tie card dated May 30, 1991 shows the corner as a rail found. A BCS tie card dated August 3, 2005 shows the corner as a harrison monument with no documentation of source.
 This corner was excavated on July 13, 2011. Prior to excavation a harrison monument was visible at the surface. Excavation revealed a section of vertical railroad rail found at 7 inches deep, below the harrison monument. Further excavation revealed a stone found at 11 inches deep. With 8 inches of the top of the stone exposed, it measures 8 inches E-W by 11 inches N-S and is clearly larger than this at deeper points, particularly in the N-S dimension. The stone is embedded in the clay layer below the road, with the top of the stone protruding approximately 2 inches out of the clay into the bottom of the road bed. The stone was accepted as the best available evidence of the corner. The top 6 inches of the stone were encased in concrete and the harrison monument was set over the top, high point of the stone. The previously existing harrison and railroad rail, both removed during excavation, had been 0.4 feet south and 1.6 feet west of the stone. While the 1968 tie card does not specify monumentation set, it is most likely that the rail was set in association with the creation of that tie card. Clearly, the statement "no stone" was erroneous.
 This corner was originally established as a wood post in June, 1822.



Kenneth E. Hedge
 Kenneth E. Hedge, County Surveyor

James S. Swift
 James S. Swift, IN LS 20200054
 March 1, 2012

Clinton Township

Section 2 T19N, R1E	Section 1 T19N, R1E
Section 11 T19N, R1E	Section 12 T19N, R1E

PHOTOGRAPHIC DOCUMENTATION

Date of photography: July 13, 2011

View of the stone from above and north.



View of the stone from above and west.



View from the east, showing the top of the stone and the old post on the west side of the road.



View from the south, looking across the stone and north along County Road 500 East.



For details and documentation, refer to related sheet "Section Corner Record."

SECTION CORNER RECORD

NE 500-550

BOONE COUNTY SURVEYOR'S OFFICE

State Plane grid coordinates NAD83 (2011):
North: 1772491.31 East: 3153369.17 (U.S. survey feet)

Type of monument: Harrison, 4" disk 'Section Corner'
Depth: Two inches above adjacent ground

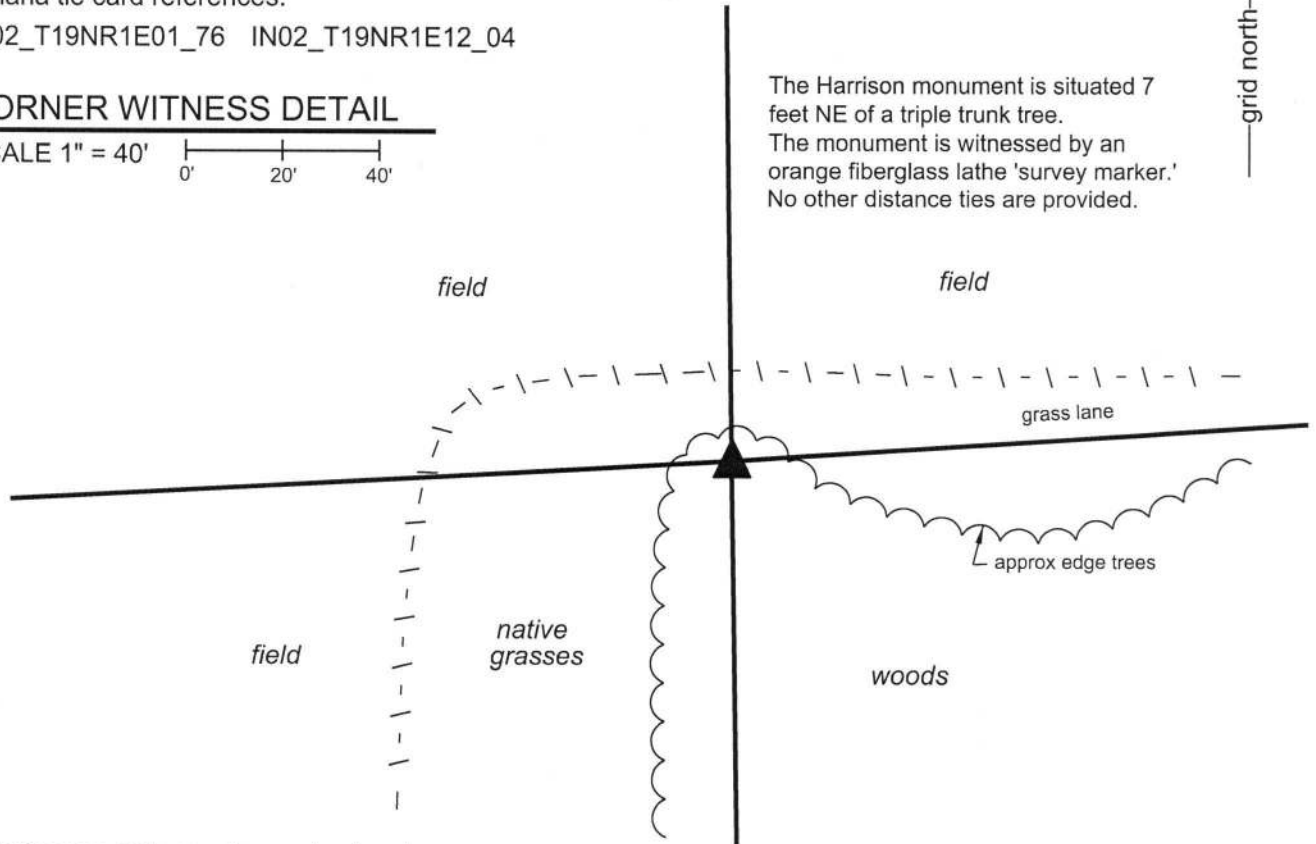
Indiana tie card references:
IN02_T19NR1E01_76 IN02_T19NR1E12_04

CORNER WITNESS DETAIL

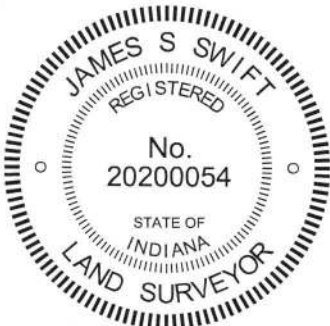
SCALE 1" = 40'
0' 20' 40'



The Harrison monument is situated 7 feet NE of a triple trunk tree.
The monument is witnessed by an orange fiberglass lathe 'survey marker.'
No other distance ties are provided.



The Harrison monument was set over a stone found. A BCS record of September 2, 1878 states, with respect to this corner, "Reestablished from Elm (dead). Set a Rock 17.14.10+." A BCS tie card dated August 19, 2005 shows the corner as a Harrison monument with no documentation of source. This corner was excavated on April 18, 2018. Prior to excavation, the Harrison monument called for in the 2005 record was found set directly in the dirt, apparently undisturbed. The monument was at the northerly prolongation of scraps of fence to the south and in line with evidence of old metal bracing material and apparent brace wire to the west. It appears that the monument was set in the approximate position the former corner post of fences to the south and west. Excavation in the immediate vicinity of the found Harrison revealed the stone called for in the 1878 record at 12 inches deep, southwest of the Harrison. With the top 6 inches of the stone exposed, it measured 10 inches N-S by 14 inches E-W. Probing indicated that the sides of the stone were generally vertical below that point. Probing along the north, east and west edges of the stone indicated that it is 17 inches tall, or close thereto, matching the record dimensions. A vague mark was detected at the top, high point of the stone, near the west edge of the rock. The stone was accepted as being the same monument called for in the 1878 record and was accepted as marking the corner. The Harrison monument set in 2005 was removed and a new Harrison monument was set directly over the top, high point of the stone. The top 6 inches of the stone were embedded in concrete and 1/2 inch diameter rebar were driven along the west edge of the stone to provide stability to the new monument. The new Harrison monument is 0.4 foot south and 0.7 foot east of the position of the previous Harrison, set in 2005. This corner was originally established as a wood post in 1822.



Kenneth E. Hedge
Kenneth E. Hedge, County Surveyor

James S. Swift
James S. Swift, IN LS 20200054

April 24, 2018

Clinton Township



SECTION CORNER RECORD

NE 500-600

BOONE COUNTY SURVEYOR'S OFFICE

State Plane grid coordinates NAD83 (NSRS 2007):

Corner 1: North: 1772662.46 East: 3156017.05 (U.S. survey feet)

Corner 2: North: 1772645.96 East: 3156017.26 (U.S. survey feet)

CORNER WITNESS DETAIL

SCALE 1" = 40'

Corner 1:

Type of monument: Harrison, 4" disk 'Section Corner'

Depth: One inch below adjacent road surface

Corner 2:

Type of monument: Harrison, 4" disk 'Section Corner'

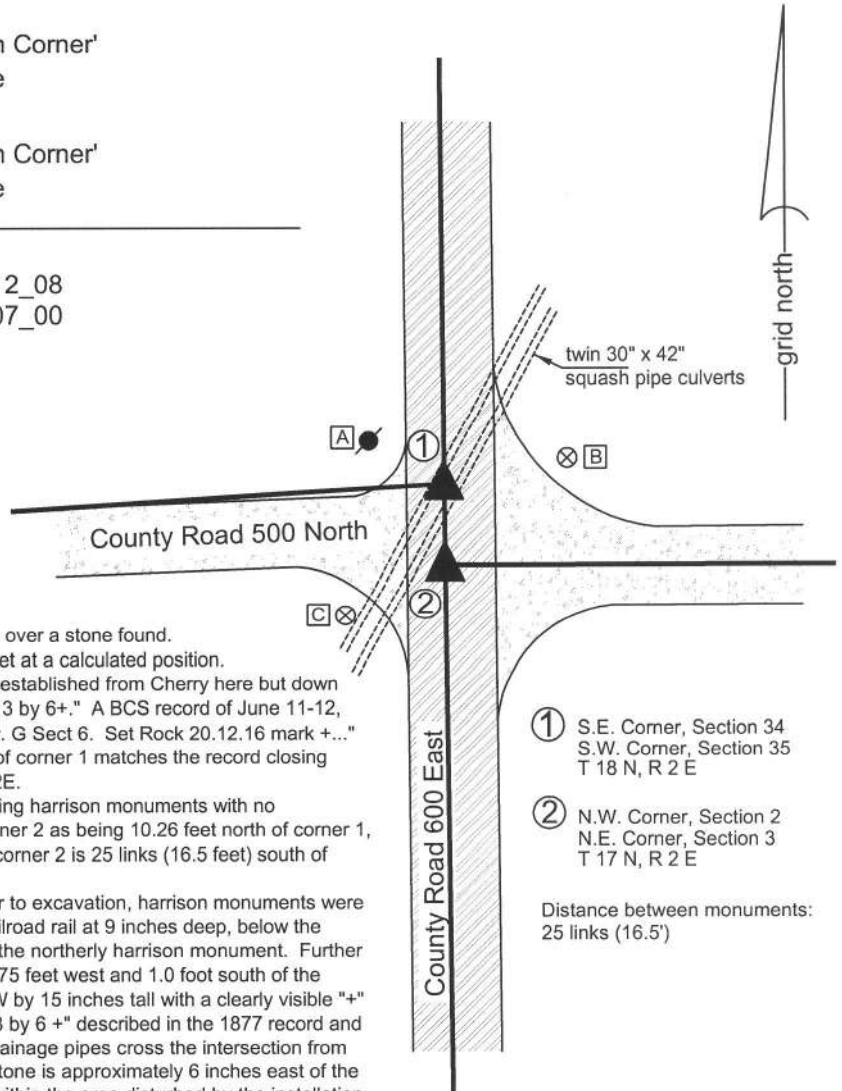
Depth: One inch below adjacent road surface

Indiana tie card references:

IN02_T19NR1E01_80 IN02_T19NR1E12_08

IN02_T19NR2E06_72 IN02_T19NR2E07_00

- A - Mag nail set in E. side power pole, 2' a.g.
16.52' to corner 1, 29.07' to corner 2.
- B - Boone County witness mark, flush,
26.07' to corner 1, 33.49' to corner 2.
- C - Boone County witness mark, flush,
33.06' to corner 1, 23.24' to corner 2.



The harrison monument at the closing corner (corner 2) was set over a stone found.

The harrison monument at the standard corner (corner 1) was set at a calculated position.

A BCS record of April 17, 1872, referring to corner 2, states "Reestablished from Cherry here but down by the roots, also found old stake at corner where set Rock 14.13 by 6+." A BCS record of June 11-12, 1877, referring to corner 1, states "Reestablished 25 lks North fr. G Sect 6. Set Rock 20.12.16 mark +..." It is noted that the referenced 25 link offset with corner 2 south of corner 1 matches the record closing distance documented in the original notes for Township 19N, R2E.

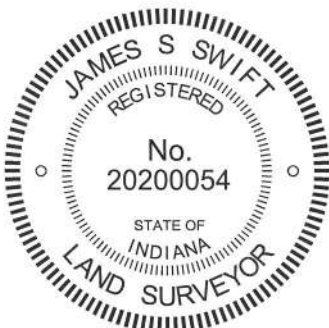
A BCS tie card dated August 3, 2005 shows both corners as being harrison monuments with no documentation of source. It is noted that the tie card shows corner 2 as being 10.26 feet north of corner 1, whereas the original notes and the 1877 record both state that corner 2 is 25 links (16.5 feet) south of corner 1.

This corner was excavated on May 28 and June 28, 2010. Prior to excavation, harrison monuments were found as shown on the 2005 tie card. Excavation revealed a railroad rail at 9 inches deep, below the southerly harrison monument. No monument was found below the northerly harrison monument. Further excavation revealed a stone found at 17 inches below grade, 2.75 feet west and 1.0 foot south of the southerly harrison. This stone is 6 inches N-S by 14 inches E-W by 15 inches tall with a clearly visible "+" etched on the top. The stone was accepted as being the "14.13 by 6 +" described in the 1877 record and was held as marking corner 2. A set of two corrugated metal drainage pipes cross the intersection from the southwest quadrant to the northeast quadrant. The found stone is approximately 6 inches east of the back-fill material associated with the pipes. Corner 1 falls well within the area disturbed by the installation of the pipes and no further evidence was found in the vicinity of corner 1. The specific position of corner 1 was established at 16.5 feet from corner 2, on the prolongation of the range line as determined by the positions of corner 2 and the standard quarter corner approximately one-half mile south.

Corner 1 was originally established as a wood post in 1819 and corner 2 was originally established as a wood post in July, 1821.

- ① S.E. Corner, Section 34
S.W. Corner, Section 35
T 18 N, R 2 E
- ② N.W. Corner, Section 2
N.E. Corner, Section 3
T 17 N, R 2 E

Distance between monuments:
25 links (16.5')



Kenneth E. Hedge
Kenneth E. Hedge, County Surveyor

James S. Swift
James S. Swift, IN LS 20200054
July 25, 2011

Clinton Twp	Marion Twp
Section 1 T19N, R1E	Section 6 T19N, R2E
Section 12 T19N, R1E	Section 7 T19N, R2E

PHOTOGRAPHIC DOCUMENTATION

Date of photography: June 28, 2010

Note: all pictures on this page show the closing corner (corner 2).

View of the stone as first exposed.



The stone washed to clearly show the etched mark on top.



View from above the stone, looking east along County Road 500 North.



View of the stone from above.



View of the stone from above and west.



For details and documentation, refer to related sheet "Section Corner Record."