

SECTION CORNER RECORD

SE 700-1100

BOONE COUNTY SURVEYOR'S OFFICE

State Plane grid coordinates NAD83 (NSRS 2007):

North: 1709788.43 East: 3183649.59 (U.S. survey feet)

Type of monument: Harrison, 4" disk 'Section Corner'

Depth: One inch below adjacent road surface

Indiana tie card references:

IN02_T17NR2E01_72 IN02_T17NR2E02_80

IN02_T17NR2E11_08 IN02_T17NR2E12_00

CORNER WITNESS DETAIL

SCALE 1" = 50'



The harrison monument was set in place of a railroad spike found.

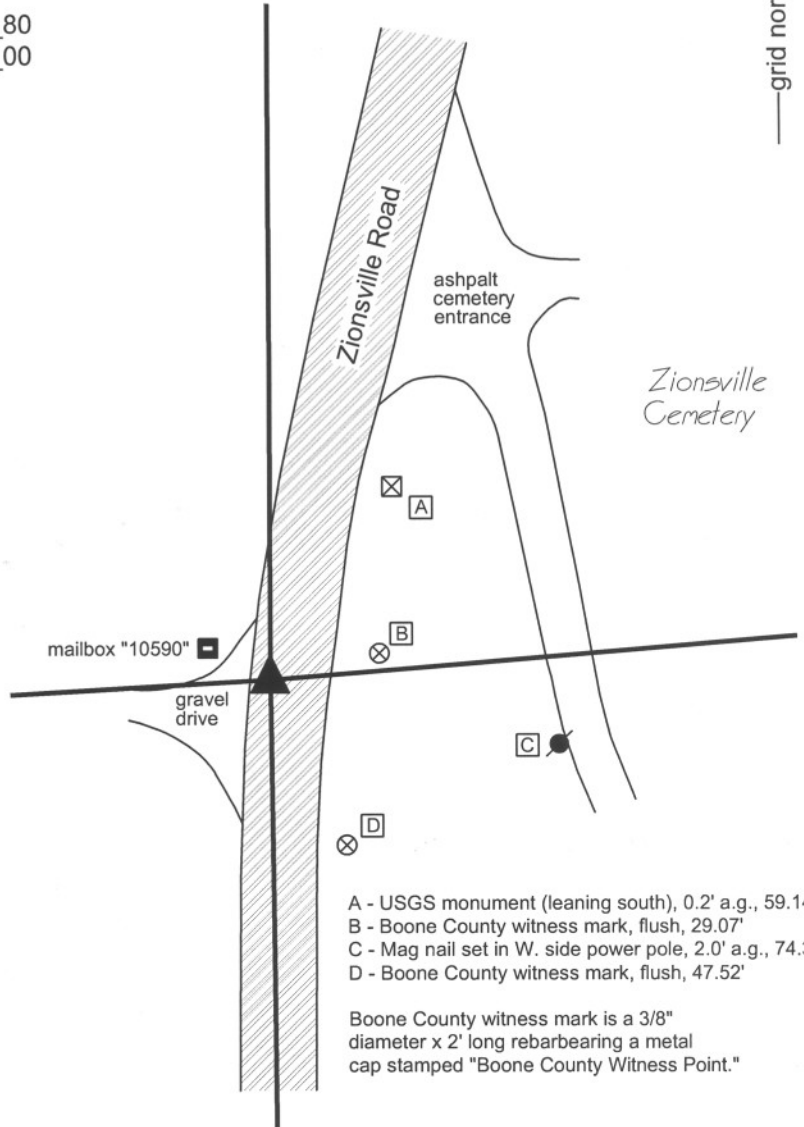
A BCS record of October 18, 1865 states "A Rock tree gone." A BCS record of December 31, 1879 states "Reest. fr. Taylors first tree ... Set Rock 14.13.10 +." The tree reference is to a BCS record of November 14, 1855 which shows the corner witnessed by two Beech trees, but which makes no mention of what monument may have been set or found. A BCS tie card of April 2, 1969 states "no stone, set yellow plate." A BCS tie card of December 9, 1994 shows the corner as a railroad spike with no documentation of source.

This corner was excavated on July 31, 2009. Prior to excavation a railroad spike was visible in 3 inches deep in a hole in the asphalt. Excavation revealed a copperweld found at 10 inches deep, below the railroad spike.

Excavation also revealed a layer of concrete at 10 inches deep. The top of the copperweld was even with the top of the concrete. The concrete layer was under the entire 4 feet by 4 feet area of exavation. Further excavation was not performed as the presence of the concrete indicates the high liklihood of previous grading in preparation for the pouring of the concrete.

The railroad spike is shown as the corner on all recorded private surveys. The spike and copperweld were held as marking the corner. The harrison monument was set in place of the railroad spike and over the copperweld, which was left in place.

This corner was originally established as a wood post in late June or early July, 1821.



- A - USGS monument (leaning south), 0.2' a.g., 59.14'
- B - Boone County witness mark, flush, 29.07'
- C - Mag nail set in W. side power pole, 2.0' a.g., 74.3'
- D - Boone County witness mark, flush, 47.52'

Boone County witness mark is a 3/8" diameter x 2' long rebarbearing a metal cap stamped "Boone County Witness Point."



Kenneth E. Hedge
 Kenneth E. Hedge, County Surveyor

James S. Swift

James S. Swift, IN LS 20200054

July 14, 2010

Eagle Township

Section 2 T17N, R2E	Section 1 T17N, R2E
Section 11 T17N, R2E	Section 12 T17N, R2E

SECTION CORNER RECORD

SE 700-1200

BOONE COUNTY SURVEYOR'S OFFICE

State Plane grid coordinates NAD83 (NSRS 2007) Indiana West zone:

Corner 1: North: 1710230.43 East: 3189011.60 (U.S. survey feet)

Corner 2: North: 1710252.67 East: 3189012.03 (U.S. survey feet)

Type of monument: Harrison, 4" disk 'Section Corner'

Depth: flush with adjacent road and ground, respectively

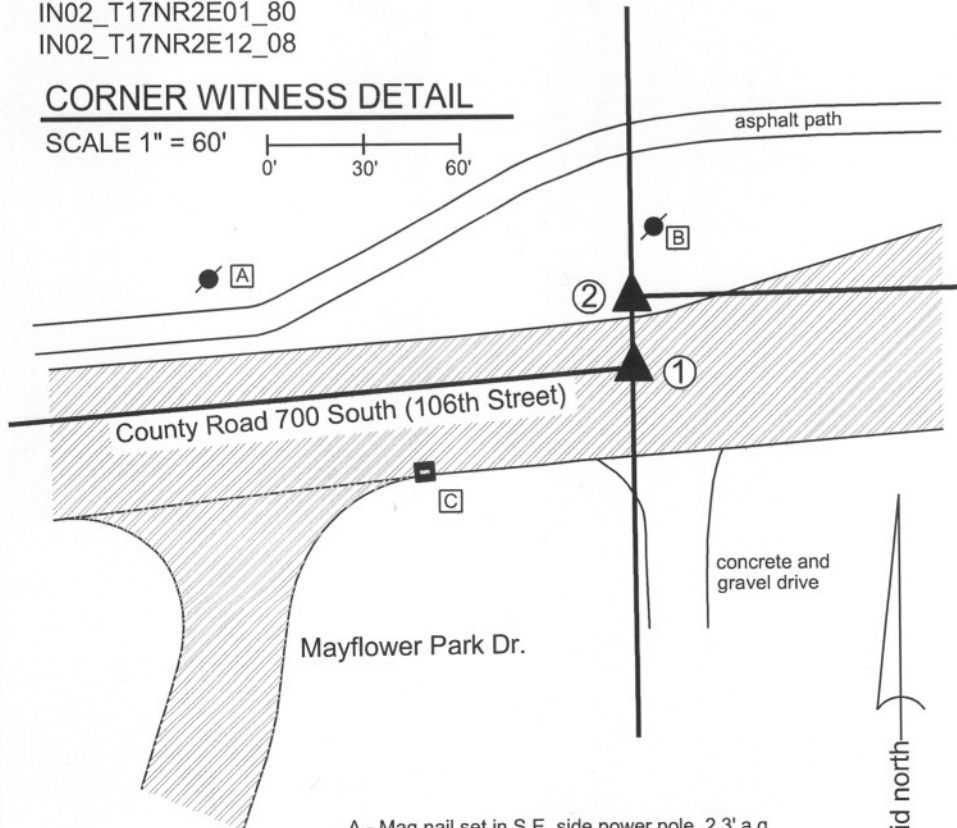
Indiana tie card references:

IN02_T17NR2E01_80

IN02_T17NR2E12_08

CORNER WITNESS DETAIL

SCALE 1" = 60'



- A - Mag nail set in S.E. side power pole, 2.3' a.g. 132.99' to corner 1, 130.71' to corner 2
- B - Mag nail set in S.W. side power pole, 2.5' a.g. 42.11' to corner 1, 20.16' to corner 2
- C - chiseled + on casting, N.E. corner, grate inlet 69.59' to corner 1, 82.08' to corner 2

- ① S.E. Corner, Section 1
N.E. Corner, Section 12
T 17 N, R 2 E
- ② S.W. Corner, Section 6
N.W. Corner, Section 7
T 17 N, R 3 E

Boone County witness mark is a 3/8" diameter x 2' long rebar bearing a metal cap stamped "Boone County Witness Point."

Distance between monuments: 22.24'
Original federal closing distance: 5.28' (8 links)

The Harrison monuments at both corners were set in calculated positions, in place of rebars formerly occupying such positions prior to road construction.

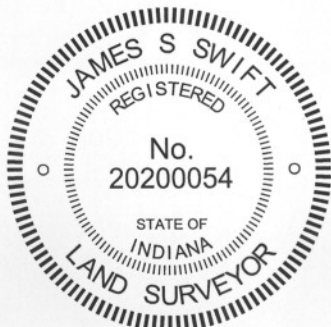
The original federal closing information from the survey of township 17 north, range 3 east places corner 2 at 8 links (5.28 feet) south of corner 1. The plat of Park Northwestern (Hamilton County, Plat Book 8, pp. 128-132) shows corner 1 as a cut "X" in concrete and states, with respect to corner 2, "Stone found with "X" and "S-7" (apparently disturbed) reset 5.28' (8 links) N. of NE cor. sec. 12-17-2. A Hamilton County tie card dated November 16, 1976, generally agrees with this statement.

A Boone County tie card dated March 6, 1991 shows corner 1 as a 5/8 inch rebar 4 feet south of the physical center of pavement. Numerous surveys recorded in the Boone County Recorder's Office, including the preliminary surveys for the adjacent industrial subdivisions, show corner 1 as the same 5/8 inch rebar and show corner 2 as a rebar, some of which also show a rebar at corner 2 at 22.64 feet north of the rebar at corner 1.

Clearly the various records are in conflict, both in terms of the orientation of the corners relative to each other and the distance between them. No information was found which could reliably identify the source for any of the modern monuments. It is noted that the references to the stone at corner 2 state that it was found disturbed and replaced in a new position.

The adjacent subdivisions in Boone County appear to hold the rebar shown on the 1991 tie card as marking corner 1. The adjacent subdivisions in Hamilton County appear to hold the corner as reestablished with the plat of Park Northwestern for corner 2. In the spring of 2007, prior to significant road construction, rebars were found at both corners, the positions of which were in general agreement with the ties from each county.

Both Harrison monuments were set on September 7, 2011 with representatives of the Boone County and Hamilton County Surveyor's Offices present. The Harrison monument at corner 1 (Boone County) was set in place of a 5/8 inch rebar which is believed to be the same monument as shown on the 1991 tie card and held by many private surveys. The Harrison monument at corner 2 (Hamilton County) was set in place of a rebar with a yellow plastic cap found in 2007. The position of this monument does not precisely fit with the 22.64 distance shown on surveys or with the computed location of the corner relative to the geometry shown on the plat of Park Northwestern, as reconstructed relative to centerline and other perimeter monumentation. It is estimated that the Harrison set at corner 2 is 1.0 foot west and 0.4 foot south of the corner as shown on the plat of Park Northwestern. It is also noted that this monument is 0.6 foot east of the range line as defined by the standard corners adjacent to and one half-mile north of the corner.



Kenneth E. Hedge
Kenneth E. Hedge, County Surveyor

James S. Swift
James S. Swift, IN LS 20200054
January 15, 2013

Eagle Twp Clay Twp
Boone Co. Hamilton Co.

Section 1 T17N, R2E	Section 6 T17N, R3E
Section 12 T17N, R2E	Section 7 T17N, R3E

SECTION CORNER RECORD

SE 750-1100

BOONE COUNTY SURVEYOR'S OFFICE

State Plane grid coordinates NAD83 (NSRS 2007):

North: 1707122.48 East: 3183681.64 (U.S. survey feet)

Type of monument: Harrison, 4" disk 'Section Corner'

Depth: One inch below adjacent road surface

Indiana tie card references:

IN02_T17NR2E11_44

IN02_T17NR2E12_36

- A - S.E. corner, ground level, steel I-beam post for mailbox "10150 Zionsville Road"
- B - Chiseled "X" found on top, steel guard rail post, 33.84'
- C - Chiseled "X" found on top, steel guard rail post, 24.20'
- D - Chiseled "X" found on top, steel guard rail post, 17.75'
- E - Chiseled "X" found on top, steel guard rail post, 19.19'

The harrison monument was set in place of a mag nail found.

A BCS tie card dated September 30, 1968 calls the corner a "yellow plate in concrete below blacktop." A BCS tie card dated July 1, 1993, based on information supplied by the Indiana Department of Transportation, states the following with respect to the corner: "Fnd P.K.N at road surface. County ties destroyed. Re-place P.K.N. with 5/8" x 18" re-bar. Hit solid object at 18". Did not dig for stone."

The ties for the 1993 INDOT supplied tie card are present and a 5/8 inch rebar with a plastic cap (markings destroyed) was found at approximately 4 inches deep, fitting with the ties. It is believed that this rebar is the same as shown on the tie card.

This corner is also addressed in a survey by the Schneider Corporation recorded in Survey Book 7, page 10, recorded on June 13, 2005 in the Office of the Boone County Recorder. This survey disputes position of the rebar as the corner and holds a railroad spike found 32 feet south of the rebar as the corner. The survey demonstrates that the railroad spike fits better with lines of occupation both at the corner and at the quarter-quarter corner to the north, as established at a mathematical split from the railroad spike to the northwest corner of section 12. A subsequent survey by the same company, recorded in Survey Book 11, page 6, recorded December 30, 2008, recorded June 20, 2008, holds the same position as the corner, but notes that a mag nail was found in the center of an asphalt patch at the same position as the railroad spike. A survey by Weihe Engineers recorded in Survey Book 10, page 24 holds the mag nail at the same position.

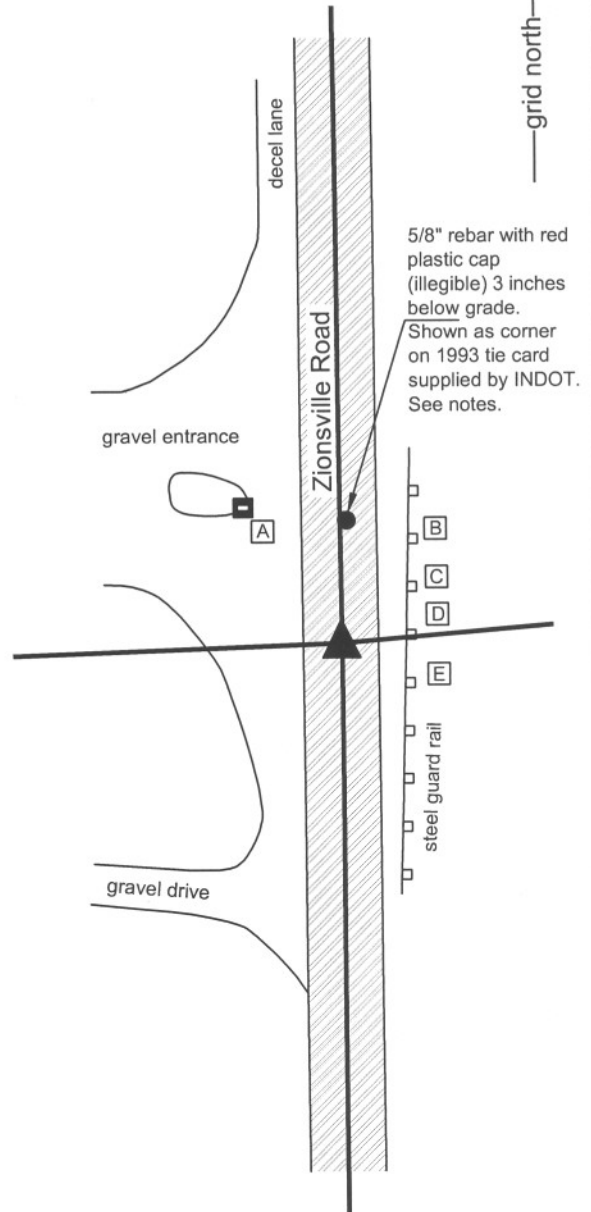
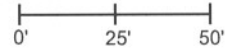
Investigation into the 32 foot discrepancy yielded the conclusion that the position of the railroad spike and mag nail held by the private surveys is a more logical position for the corner that the rebar shown on the INDOT supplied BCS tie card. As noted on the 2005 survey, this position fits better with occupation both as it falls along the E-W half setion line and the line determined by the quarter-quarter to the north, as dependent upon the subject quarter corner.

As noted on the 2008 Schneider survey the railroad spike was not present and a mag nail was found in an area of asphalt patch. This corner was monumented on July 31, 2009 and the same condition was found. The mag nail was in the center of the patch area and was also at the intersection of the lines connecting four small "straddle" nails on each respective side of the hole. It appears that a small area had been excavated but it is not known who did this or when. This corner falls in an area of fill in the immediate vicinity of a large culvert under the road. It is considered highly likely that a corner stone, if present would have been removed during the process of installing the culvert, if not before. Hence, significant excavation was not performed. The mag nail found in the position previously marked by the railroad spike was held as marking the corner. The mag nail was removed and a harrison monument was set in its place. The 1993 tie card is considered to be incorrect.

This corner was originally established as a wood post in late June or early July, 1821.

CORNER WITNESS DETAIL

SCALE 1" = 50'

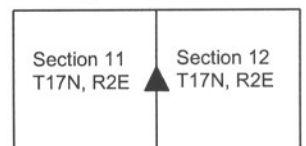


Kenneth E. Hedge
 Kenneth E. Hedge, County Surveyor

James S. Swift
 James S. Swift, IN LS 20200054

July 14, 2010

Eagle Township



SECTION CORNER RECORD

SE 750-1200

BOONE COUNTY SURVEYOR'S OFFICE

State Plane grid coordinates NAD83 (NSRS 2007):

(1) North: 1707574.34 East: 3189031.96 (U.S. survey feet)

(2) North: 1707563.95 East: 3189032.03 (U.S. survey feet)

Type of monument: Harrison, 4" disk 'Section Corner'

Depth: (1) eight inches above the bed of of swamp
(below the normal high water level of the swamp.)

Depth: (2) 4 inches above adjoining ground

Indiana tie card references:

IN02_T17NR2E12_44 IN02_T17NR3E07_36

The harrison monument at corner 1 was set over a stone found. The Harrison monument at corner 2 was set at a calculated position and in place of the remnants of a concrete monument found.

This corner is only mentioned in the BCS Surveyor's Record with respect to the original establishment of the corner in 1821 and again as the terminal point for a measurement in 1837. No recent BCS tie cards were found referencing this corner.

The plat of Park Northwestern, to the northeast of this corner, recorded in the records of Hamilton County as Plat Book 8, pages 128-132, shows a stone found at corner 1 and shows a concrete monument set in place of the remains of a wood corner post at corner 2, 10.38 feet south of the stone at corner 1. The geometry of the plat of Park Northwestern was reconstructed relative to perimeter monumentation and centerline control monumentation found in Northwestern Drive.

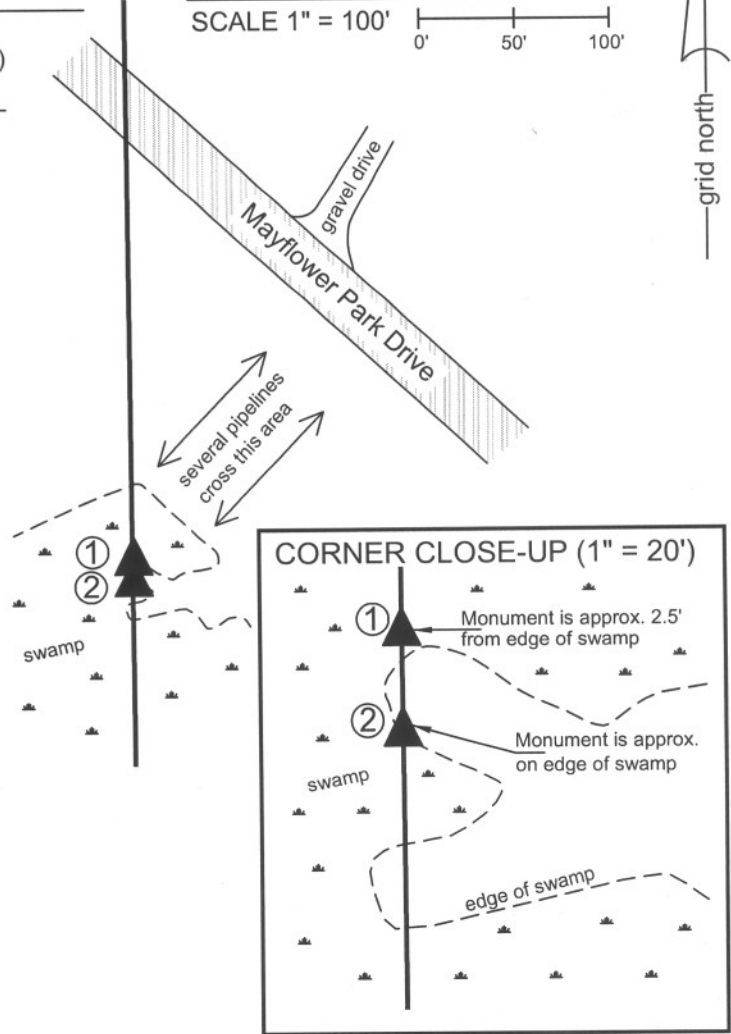
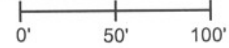
The stone at corner 1 shown on the plat was found and fits precisely with the found monumentation. Remnants of the concrete monument shown on the plat at corner 2 were also found. The stone was located and excavated on October 7, 2009. It is located in a swamp and was found at approximately 8 inches below the top of the mud in the exact position calculated from existing monumentation in Park Northwestern. The stone measures 8 inches N-S by 10 inches E-W with 14 inches of the top exposed. The top of the stone is at the top of the clay layer below the mud of the swamp and the stone appears to be vertical. A 1/2 inch diameter rebar and wood hub were found against the northwest edge of the stone and a surveyor's chaining pin on the north side. Remnants of the base of an old wood post were found 3 inches south of the stone. The 1/2 inch rebar has been held as the corner by numerous private surveys, including a survey recorded in Survey Book 1, page 35, Office of the Boone County Recorder. A 5/8 inch rebar bearing a cap stamed "Woolpert" was found 8.7 feet south and 0.2 foot west of the top, center of the stone. This monument is within a foot of a calculated position for corner 1 shown on a survey recorded in Survey Book 7, page 10.

Due to the presence of the swamp and a series of pipelines installed adjacent to this corner to the north and south, no E-W fence was found in the immediate vicinity of the corner. An E-W fence does exist from one-half mile west to a point approximately 660 feet west of the corner. The stone is located approximately at the easterly extension of this fence, as located at several points along the fence. It is noted that the stone was found at the end of a dry season in 2009 and that excavation in the swamp was possible due to the low water condition. A harrison monument was set over the top, center of the stone after the next dry season, on October 7, 2010. The monument is set within a vertical section of 12 inch HDPE storm pipe. The piece of pipe is set around the stone and filled with concrete and anchored to 4 sections of 5/8 inch diameter rebar which are driven to a depth of 5 feet. The top 12 inches of the stone was embedded in concrete. The harrison monument and associated concrete and storm pipe section protrude approximately 8 inches above the bed of the swamp, but do not extend to above the general high water level of the swamp.

The Harrison monument at corner 2 was set in September, 2012 in cooperation with the Hamilton County Surveyor's Office. The corner was established on the range line, 10.38 feet south of the Harrison over the stone at corner 1. Remnants of the concrete monument shown on the plat of Park Northwestern were found and removed. The Harrison was set in a similar fashion to the Harrison monument at corner 1. Corner 2 falls in an area slightly above the normal pool level of the swamp.

CORNER WITNESS DETAIL

SCALE 1" = 100'



① E. 1/4 Corner, Section 12 T 7 N, R 2 E

② W. 1/4 Corner, Section 7 T 17 N, R 3 E

Distance between monument: 10.38 feet per plat of Park Northwestern

Eagle Twp Boone Co. Clay Twp Hamilton Co.

Section 12 T17N, R2E	Section 7 T17N, R3E
-------------------------	------------------------

James S. Swift
James S. Swift, IN LS 20200054

Kenneth E. Hedge
Kenneth E. Hedge, County Surveyor

July 14, 2010, Revised January 15, 2013

PHOTOGRAPHIC DOCUMENTATION
Date of photography: Various (see below)

The stone and rebar as exposed on 10/7/2009.



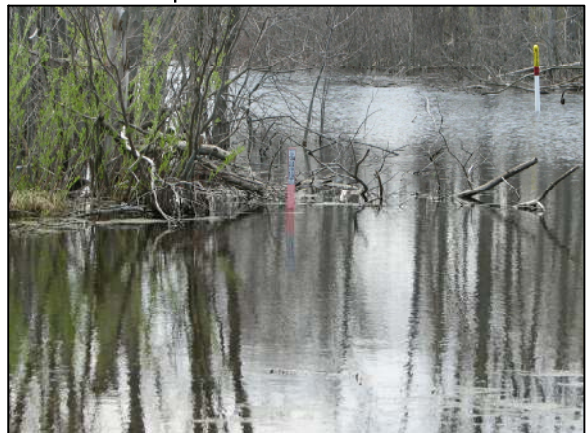
The stone as exposed on 10/7/2010. The base of the old post is also visible behind the stone.



The harrison monument installed over the top of the stone on October 7, 2010 (Boone corner).



The corner in a high water condition on April 21, 2011. The top half of the witness lathe is visible.



The Boone County harrison on August 31, 2012. View for the north, looking south towards the Hamilton County corner behind the shrubs.



The harrison monument set at the Hamilton County corner on August 31, 2012.



For details and documentation, refer to related sheet "Section Corner Record."