

SECTION CORNER RECORD

SE 700-500

BOONE COUNTY SURVEYOR'S OFFICE

State Plane grid coordinates NAD83 (NSRS 2007):

North: 1709024.83 East: 3151584.84 (U.S. survey feet)

Type of monument: Harrison, 4" disk 'Section Corner'

Depth: 2 inches above adjoining ground in concrete pillar

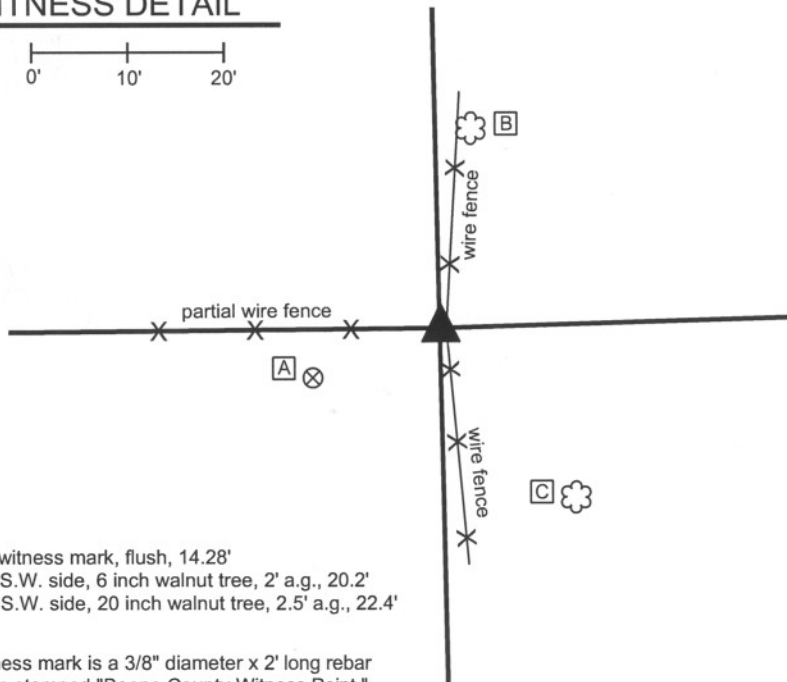
Indiana tie card references:

IN02_T17NR1E01_72 IN02_T17NR1E02_80

IN02_T17NR1E11_08 IN02_T17NR1E12_00

CORNER WITNESS DETAIL

SCALE 1" = 20'



- A - Boone County witness mark, flush, 14.28'
- B - Mag nail set in S.W. side, 6 inch walnut tree, 2' a.g., 20.2'
- C - Mag nail set in S.W. side, 20 inch walnut tree, 2.5' a.g., 22.4'

Boone County witness mark is a 3/8" diameter x 2' long rebar bearing a metal cap stamped "Boone County Witness Point."

The harrison monument was set in place of the base of an old cedar corner post found.

A BCS record of March 11, 1915 states "Found Rock at Corner." No BCS tie cards were found for this corner. An old, round, wood corner post is visible at the intersection of fences to the North, South and West. The base of an older, 6 inch by 6 inch cedar post was found immediately west of this post. A small rock, measuring approximately 6x3x4 inches was found against the west edge of the base of the old cedar post. No other rocks were found in the immediate vicinity of this corner. The base of the cedar post was accepted as the best available evidence of the original location of the corner. The post was partially removed and the harrison monument was set in the position of the post.

This corner was originally established as a wood post in May, 1820.



Kenneth E. Hedge
Kenneth E. Hedge, County Surveyor

James S. Swift

James S. Swift, IN LS 20200054

March 11, 2009, Revised July 14, 2010

Perry Township

Section 2 T17N, R1E	Section 1 T17N, R1E
Section 11 T17N, R1E	Section 12 T17N, R1E

PHOTOGRAPHIC DOCUMENTATION

Date of photography: April 28, 2008

Base of old cedar post exposed.
View from northwest.



Current corner post and base of old cedar post.
View from southwest.



For details and documentation, refer to
related sheet "Section Corner Record."

SECTION CORNER RECORD

SE 700-550

BOONE COUNTY SURVEYOR'S OFFICE

State Plane grid coordinates NAD83 (NSRS 2007):

North: 1709101.74 East: 3154220.20 (U.S. survey feet)

Type of monument: Harrison, 4" disk 'Section Corner'

Depth: 3 inches above adjacent ground

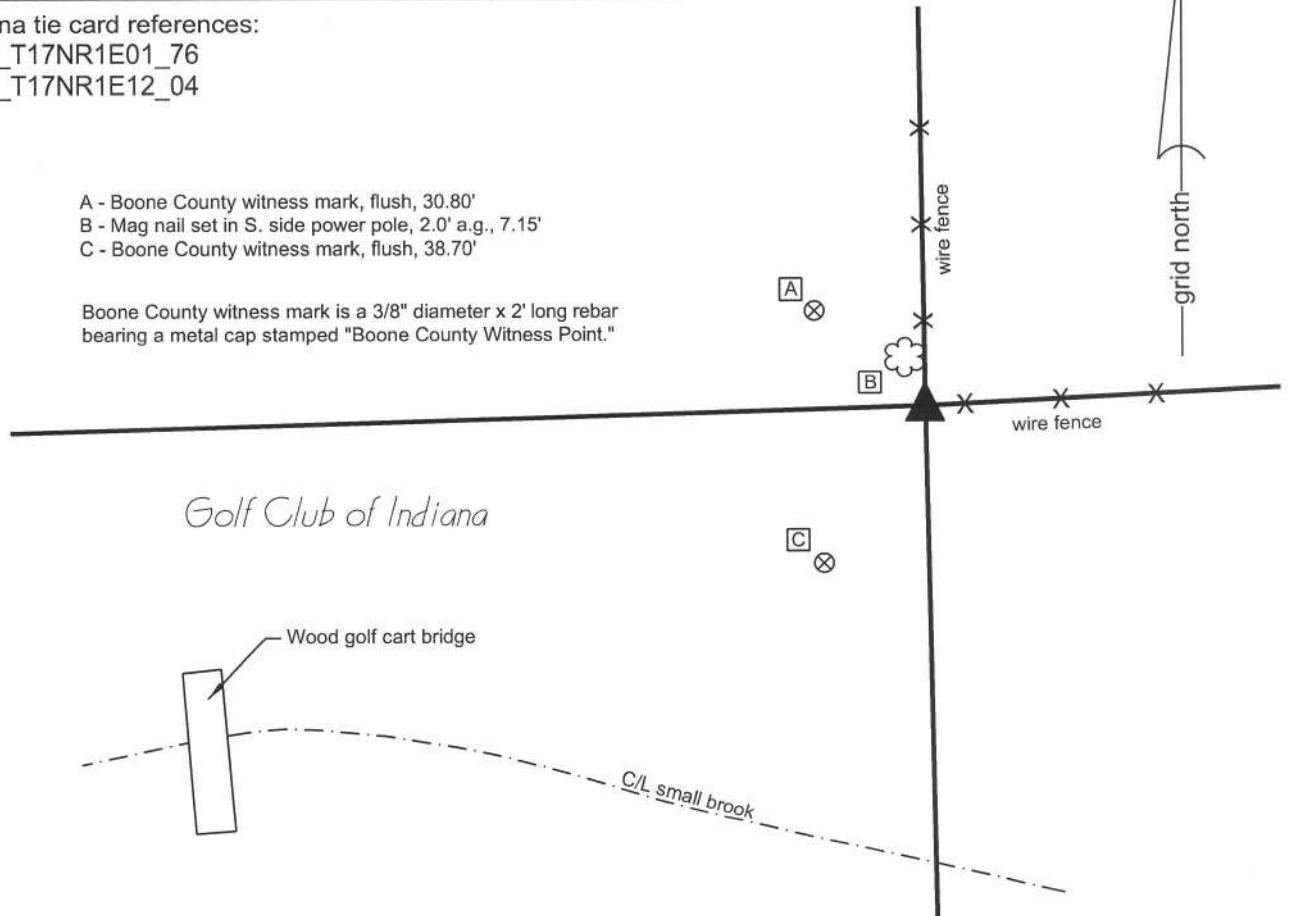
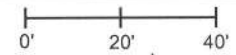
Indiana tie card references:

IN02_T17NR1E01_76

IN02_T17NR1E12_04

CORNER WITNESS DETAIL

SCALE 1" = 40'



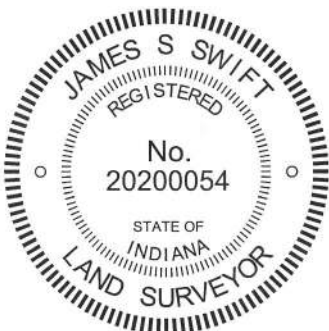
- A - Boone County witness mark, flush, 30.80'
- B - Mag nail set in S. side power pole, 2.0' a.g., 7.15'
- C - Boone County witness mark, flush, 38.70'

Boone County witness mark is a 3/8" diameter x 2' long rebar bearing a metal cap stamped "Boone County Witness Point."

The Harrison monument was set in place of a stone found.

This corner is not specifically described in the BCS Surveyor's Record. It is mentioned as the terminal point for measurements in 1837, 1839 and 1853. No recent BCS tie cards were found referencing this corner. This corner was excavated on August 17, with further excavation and final monumentation performed on August 31, 2009. Prior to excavation a wood corner post was visible at the intersection of fences to the north and east. The position of this post fits well relative to surrounding corners. A 5/8 inch rebar with a metal cap stamped "Carl Anderson Prof Engr" was found against the northeast edge of the post. Excavation yielded a rock which appeared to be a base rock against the north edge of the post. Excavation also revealed a rock which does have the characteristics of a section corner stone on the south side of the post at approximately 4 inches below adjoining gea. This stone is set away from the post slightly, hence it is not a brace rock. It measured 13 inches E-W by 7 inches N-S and was 11 inches tall, oriented in cardinal directions. The stone was removed and the Harrison monument was set in its place. The post was left in place but is broken off at the base. The top portion of the post is suspended within the wires attached to it and was pushed slightly to the north from its original position.

This corner was originally established as a wood post in June, 1820.



Kenneth E. Hedge
 Kenneth E. Hedge, County Surveyor

James S. Swift
 James S. Swift, IN LS 20200054
 July 14, 2010, Revised March 7, 2013

Perry Twp



PHOTOGRAPHIC DOCUMENTATION

Date of photography: August 17 - September 2, 2009

The corner post, prior to excavation.
View from the southwest.



The corner post and rebar, prior to excavation.
View from the northeast.



The stone at the base of the corner post.
View from the southwest.



The harrison monument set in place of the stone.
Note that the bottom of the post was shifted to the north, see attached notes.



For details and documentation, refer to related sheet "Section Corner Record."

SECTION CORNER RECORD

SE 700-600

BOONE COUNTY SURVEYOR'S OFFICE

State Plane grid coordinates NAD83 (NSRS 2007):

North: 1709230.31 East: 3156831.01 (U.S. survey feet) (standard corner)

North: 1709199.97 East: 3156831.63 (U.S. survey feet) (closing corner)

Type of monument: Harrison, 4" disk 'Section Corner'

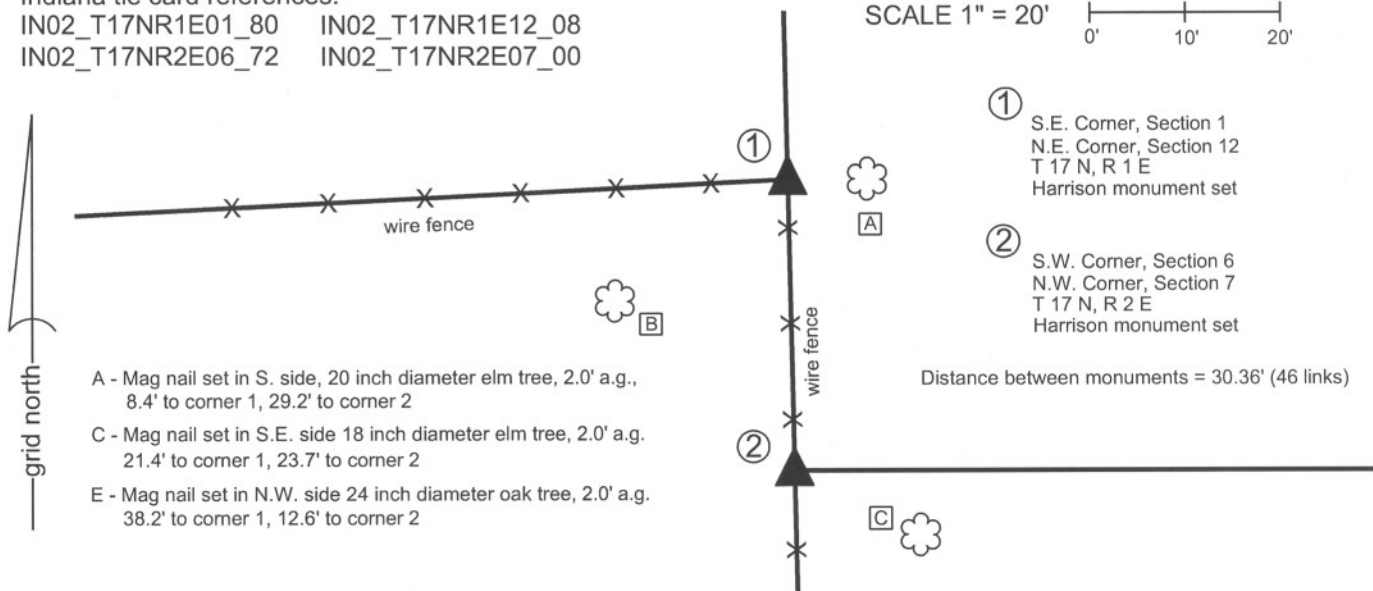
Depth: 3 inches above adjoining ground.

Indiana tie card references:

IN02_T17NR1E01_80 IN02_T17NR1E12_08
 IN02_T17NR2E06_72 IN02_T17NR2E07_00

CORNER WITNESS DETAIL

SCALE 1" = 20'

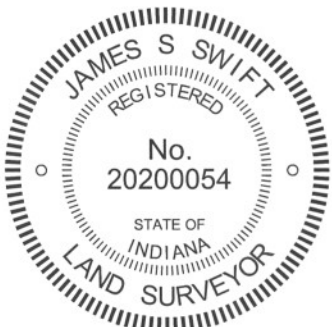


- ① S.E. Corner, Section 1
N.E. Corner, Section 12
T 17 N, R 1 E
Harrison monument set
- ② S.W. Corner, Section 6
N.W. Corner, Section 7
T 17 N, R 2 E
Harrison monument set

Distance between monuments = 30.36' (46 links)

- A - Mag nail set in S. side, 20 inch diameter elm tree, 2.0' a.g., 8.4' to corner 1, 29.2' to corner 2
- C - Mag nail set in S.E. side 18 inch diameter elm tree, 2.0' a.g. 21.4' to corner 1, 23.7' to corner 2
- E - Mag nail set in N.W. side 24 inch diameter oak tree, 2.0' a.g. 38.2' to corner 1, 12.6' to corner 2

The harrison monument at corner 1 was set in place of a rebar found and over the base of an old wood corner post. The harrison monument at corner 2 was set on the range line connecting corner 1 and the standard corner approximately 1/2 mile south at the record closing distance of 46 links from corner 1. No specific descriptions of this corner were found in the BCS Surveyor's Record. Corner 1 is mentioned as the terminal point for measurements in records from 1836 and 1901. Corner 2 is mentioned as the terminal point for a measurement in a record of 1865. A tie card dated January 1990 on file in this office, believed to have been provided by the Indiana Department of Transportation, shows corner 1 as a 1/2 inch rebar slightly east of a wood corner fence post. This corner was excavated on September 1, 2009. Prior to excavation, corner 1 appeared to be marked by a wood corner post with fence to the south and west and a rebar near the northeast corner of the post, per the 1990 tie card. Corner 2 appeared to be marked by two rebars approximately 0.7 of a foot apart and a stone at several inches deep, exposed in a hole. Excavation of the standard corner, being corner 1, revealed several rocks around the post, all of which appeared to be brace rocks for the post and none of which were positively identifiable as section corner stones. Excavation along the east edge of the post did confirm that the post was leaning slightly towards the west. At approximately 2.5 feet deep, the post is directly below the rebar. As the post is leaning towards the west, the rebar set on the east side of the post was directly over the base of the post as situated in the ground. It is not known whether this was intentional or not in the setting of the rebar, but given the common position of the rebar and the bottom of the post, this position was held as marking the corner and a harrison monument was set at the position of the rebar, directly over the base of the post and slightly east of the part of the post which is above ground. Excavation at corner 2 revealed remnants of an old wood corner post in addition to the two rebars and rock found. The rock which was visible in a hole prior to excavation proved to be along the southeast edge of the old corner post. The rock is not mentioned in the BCS Surveyor's record and did not appear to be a section corner stone, so much as a brace rock. The position of the corner was calculated to be at the original closing distance of 46 links (30.36 feet) south of corner 1 on the line connecting corner 1 with the standard corner approximately 1/2 mile south (See corner SE-750-600). This position fell close to the northwest edge of the old wood corner post. One of the rebars, bearing a metal cap stamped "Carl Anderson, Prof. Engr" was 0.9 foot south and 0.4 foot west of the corner as so established. The other rebar, stamped "American Consulting Engrs, Indpls" was 0.2 foot south and 0.6 foot west of the corner. This variation reflects the approximate difference between the rebar and visible portion of the post at corner 1, as discussed above. The center of the remnants of the old wood post are 1 foot south and 0.5 foot east of the calculated corner. A survey recorded in Survey Book 6, pages 66-67 (Boone County Recorder), by American Consulting, Inc. holds corner 1 as the wood corner post (presumably the portion visible above ground) and does not discuss corner 2, but may be the source of the northerly of the two capped rebars. A survey recorded in Survey Book 6, pages 68-69 by Major Engineering and Land Surveying, Inc. shows corner 2 as the A.C.E. rebar found. A survey recorded in Survey Book 7, page 7 by the Schneider Corporation shows corner 2 as being calculated from the iron pin found at corner 1, by the same method employed herein. A harrison monument was set at the position of the corner calculated with respect to corner 1 and the record closing distance of 46 links, as discussed above.



Kenneth E. Hedge
 Kenneth E. Hedge, County Surveyor

James S. Swift
 James S. Swift, IN LS 20200054
 March 30, 2012

Perry Twp Eagle Twp

Section 01 T17N, R1E	Section 6 T17N, R2E
Section 12 T17N, R1E	Section 7 T17N, R2E

SECTION CORNER RECORD

SE 750-500

BOONE COUNTY SURVEYOR'S OFFICE

State Plane grid coordinates NAD83 (NSRS 2007):

North: 1706382.96 East: 3151644.41 (U.S. survey feet)

Type of monument: Harrison, 4" disk 'Section Corner'

Depth: Flush with road surface

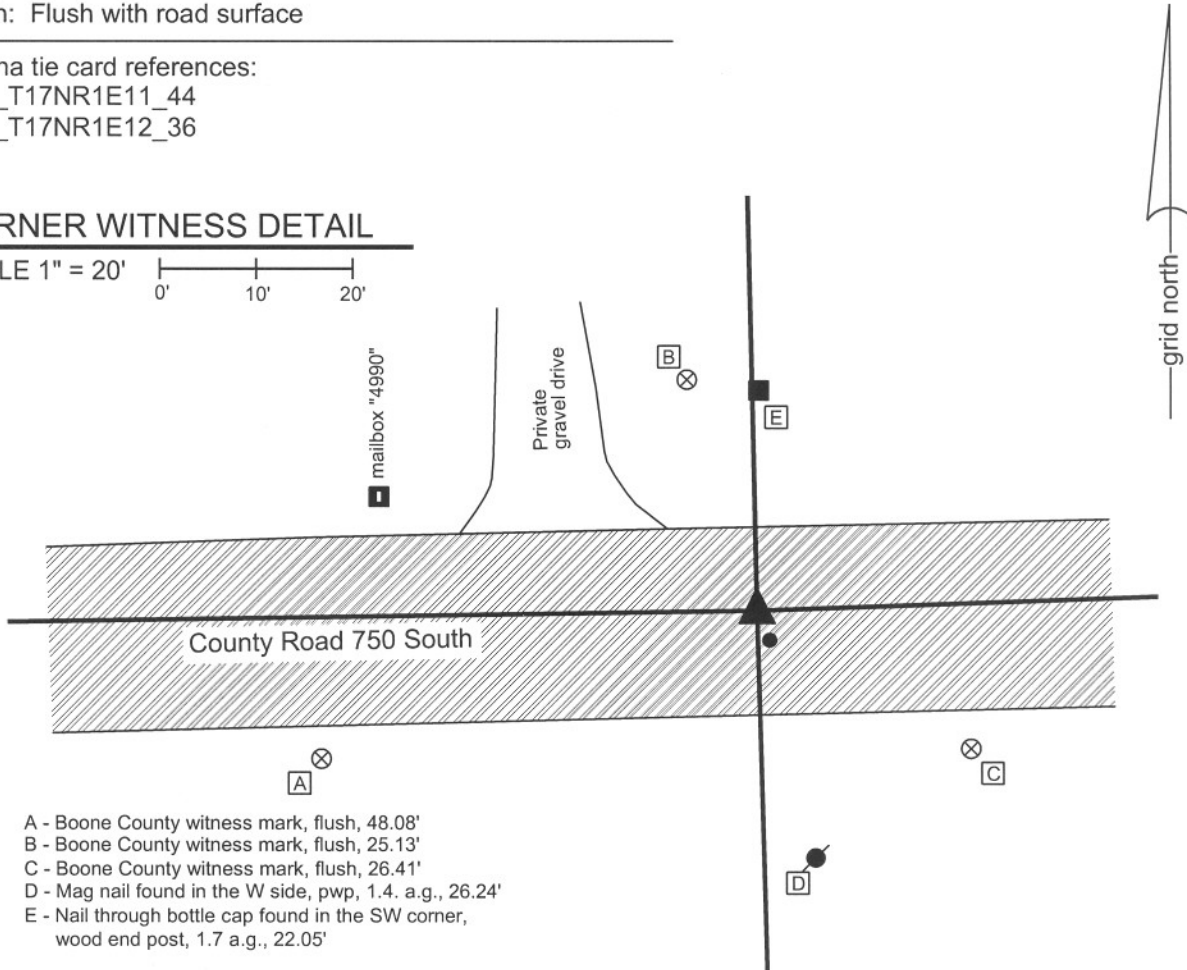
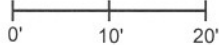
Indiana tie card references:

IN02_T17NR1E11_44

IN02_T17NR1E12_36

CORNER WITNESS DETAIL

SCALE 1" = 20'

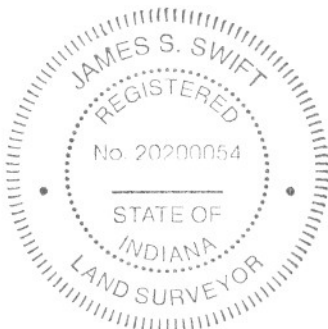


- A - Boone County witness mark, flush, 48.08'
- B - Boone County witness mark, flush, 25.13'
- C - Boone County witness mark, flush, 26.41'
- D - Mag nail found in the W side, pwp, 1.4. a.g., 26.24'
- E - Nail through bottle cap found in the SW corner, wood end post, 1.7 a.g., 22.05'

Boone County witness mark is a 3/8" diameter x 2' long rebar bearing a metal cap stamped "Boone County Witness Point."

Survey control mark is a 3/8" diameter x 2' long rebar bearing a red plastic cap stamped "Control Point."

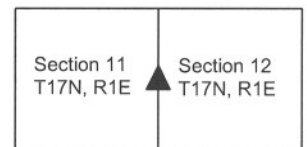
The Harrison monument was set over the approximate center of the top of a 11 inch by 18 inch (top dimensions) granite stone found and accepted as marking the corner. The top of the stone is 20 inches below the surface of the road. Boone County Surveyor Records dated June 28, 1864 call out this corner as "a stone that was set" with no dimensions stated for the stone. The found stone fits well with local evidence in the form of the existing roadway and fence to the north, as well as fitting with other evidence through the E-W center of Section 12, as found in 2007 and shown in the 1864 record. A 5/8" rebar of unknown origin was found, 1 inch below grade, 3.1' S and 1.3' E of the stone. The original corner was set in May, 1820.



Kenneth E. Hedge
 Kenneth E. Hedge, County Surveyor

James S. Swift
 James S. Swift, IN LS 20200054
 December 21, 2007

Perry Township



PHOTOGRAPHIC DOCUMENTATION

Date of photography: 9/07/2007

Photograph of found stone, taken from the south. The top of the stone is 11 inches by 18 inches and 20 inches below the surface of the road. The Harrison monument was set over the approximate center point of the top of the stone.




SECTION CORNER RECORD

SE 750-600

BOONE COUNTY SURVEYOR'S OFFICE

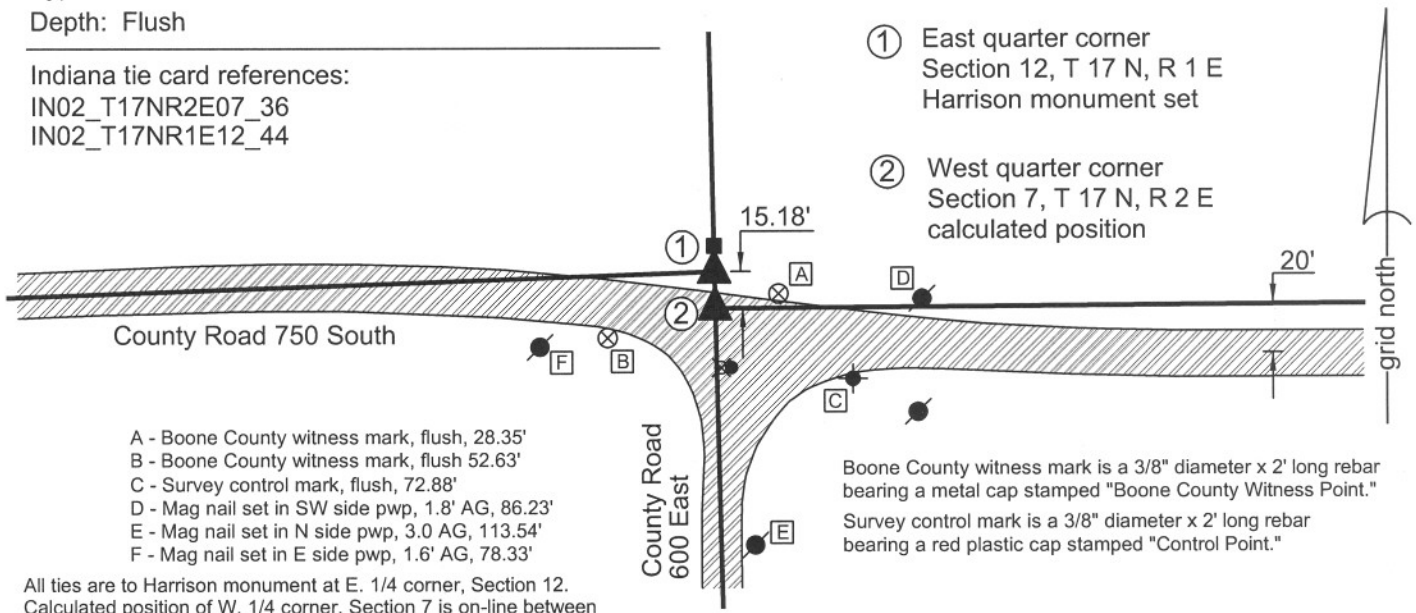
State Plane grid coordinates NAD83 (NSRS 2007):
North: 1706569.79 East: 3156887.70 (U.S. survey feet)

CORNER WITNESS DETAIL

SCALE 1" = 80' 

Type of monument: Harrison, 4" disk 'Section Corner'
Depth: Flush

Indiana tie card references:
IN02_T17NR2E07_36
IN02_T17NR1E12_44



- A - Boone County witness mark, flush, 28.35'
- B - Boone County witness mark, flush 52.63'
- C - Survey control mark, flush, 72.88'
- D - Mag nail set in SW side pwp, 1.8' AG, 86.23'
- E - Mag nail set in N side pwp, 3.0 AG, 113.54'
- F - Mag nail set in E side pwp, 1.6' AG, 78.33'

Boone County witness mark is a 3/8" diameter x 2' long rebar bearing a metal cap stamped "Boone County Witness Point."
Survey control mark is a 3/8" diameter x 2' long rebar bearing a red plastic cap stamped "Control Point."

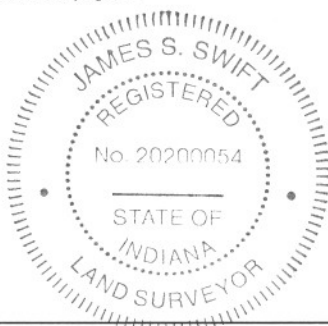
All ties are to Harrison monument at E. 1/4 corner, Section 12.
Calculated position of W. 1/4 corner, Section 7 is on-line between
E. 1/4 corner, Section 12 and S.E. corner, Section 12 (Harrison monument)

The Harrison monument was set in place of a 1/2 inch rebar found. The original east quarter corner of section 12 was a wood post set in 1819. A BCS record dated June 28, 1864 states that "an old stake in pond found from Ash" marks this corner. On the same day, the same crew found a stone at the west quarter corner and set stones at the center of section and the southeast corner, west half, northeast quarter. The stone at the center of section was found and replaced with a railroad rail in 1971. The stone at the west quarter corner was found and monumented with a Harrison monument in 2007. It is noted that the railroad rail at the center of section and a railroad spike at or near the southeast corner, west half, northeast quarter, fall within 6 inches of a straight line connecting the stone at the west quarter corner and the 1/2 inch rebar at the east quarter corner. It is also noted that the aforementioned straight line runs coincident with the approximate center of County Road 750 South from the west quarter corner to a point slightly west of the east quarter corner. It is further noted that the rebar falls on the line connecting a stone and Harrison at the southeast corner of section 12 with the old fence end post immediately north of the rebar. The origin of the rebar is not known, but its position fits well with the available evidence and was held as marking the corner.

With respect to the west quarter corner of section 7, no original monument was set, as this is a closing quarter corner. Recent private surveys have held the approximate center of County Road 750 South, bearing east from the corner, as marking the east-west half-section line. A rebar and mag nail which are approximately 40 feet south of the previously discussed 1/2 inch rebar represent recent interpretations of this corner. However, information contained in Boone County Road Record 8, page 37, June, 1892, clearly states that the Lebanon, Fayette and Royalton Free Gravel Road (subsequently designated as County Road 750 South), extending east from the range line, was constructed on a center line 20 feet south of and parallel with the east-west half-section line and that portion of the road west of the range line was constructed on a centerline coincident with the east-west half section line through section 12. Study of old Boone County atlases indicates that no road existed through the center of section 7 prior to the construction of the Lebanon, Fayette and Royalton Free Gravel Road.

Establishing the west quarter corner of section 12 relative to the original plat and the record closing offsets to the north and south yields several feet of uncertainty. In creating the original plats, the practice typically was followed to treat the closing distance at the quarter corner along a range line as being the average of the closing distances to the north and south and calculating the record acreage of the west half of the closing quarter sections with respect to this average distance. Analysis of the original plat of Township 17 North, Range 2 East, indicates that this practice was followed in section 18. In section 7, however, the record acreages appear to have been calculated as though the closing offset at the north side of the section is 46 links north of the standard corner, rather than 46 links south of the standard corner. The result of this is that the west halves of the northwest and southwest quarters of section 7 are represented as being larger than was possible, given the dimensions of the section. Reducing the record acreages to fit that which was possible, and calculating the offset with respect to these reduced acreages yields a closing offset of 19 links, rather than the average dimension of 23 links. It is not clear that this was the intention of the person who made the plat. Hence, the average closing offset was held for the calculation of the corner shown on this sheet. It is noted that an uncertainty of approximately 4 links (2.6 feet) is introduced with respect to the location of the west quarter corner of section 7.

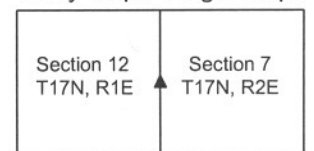
It is observed that holding the average closing of 23 links (15.18 feet) at the west quarter corner, the calculated corner fits well with the location of County Road 750 East extending to the east, treating the road as being 20 feet south of the east-west half quarter section line, per the original description of the road contained in Road Record 8, page 37.



Kenneth E. Hedge
Kenneth E. Hedge, County Surveyor

J. S. Swift
James S. Swift, IN LS 20200054
December 21, 2007

Perry Twp. Eagle Twp.



SECTION CORNER RECORD

SE 800-600

BOONE COUNTY SURVEYOR'S OFFICE

State Plane grid coordinates NAD83 (NSRS 2007):

North: 1703918.22 East: 3156949.11 (U.S. survey feet)

Type of monument: Harrison, 4" disk 'Section Corner'

Depth: Flush with road surface

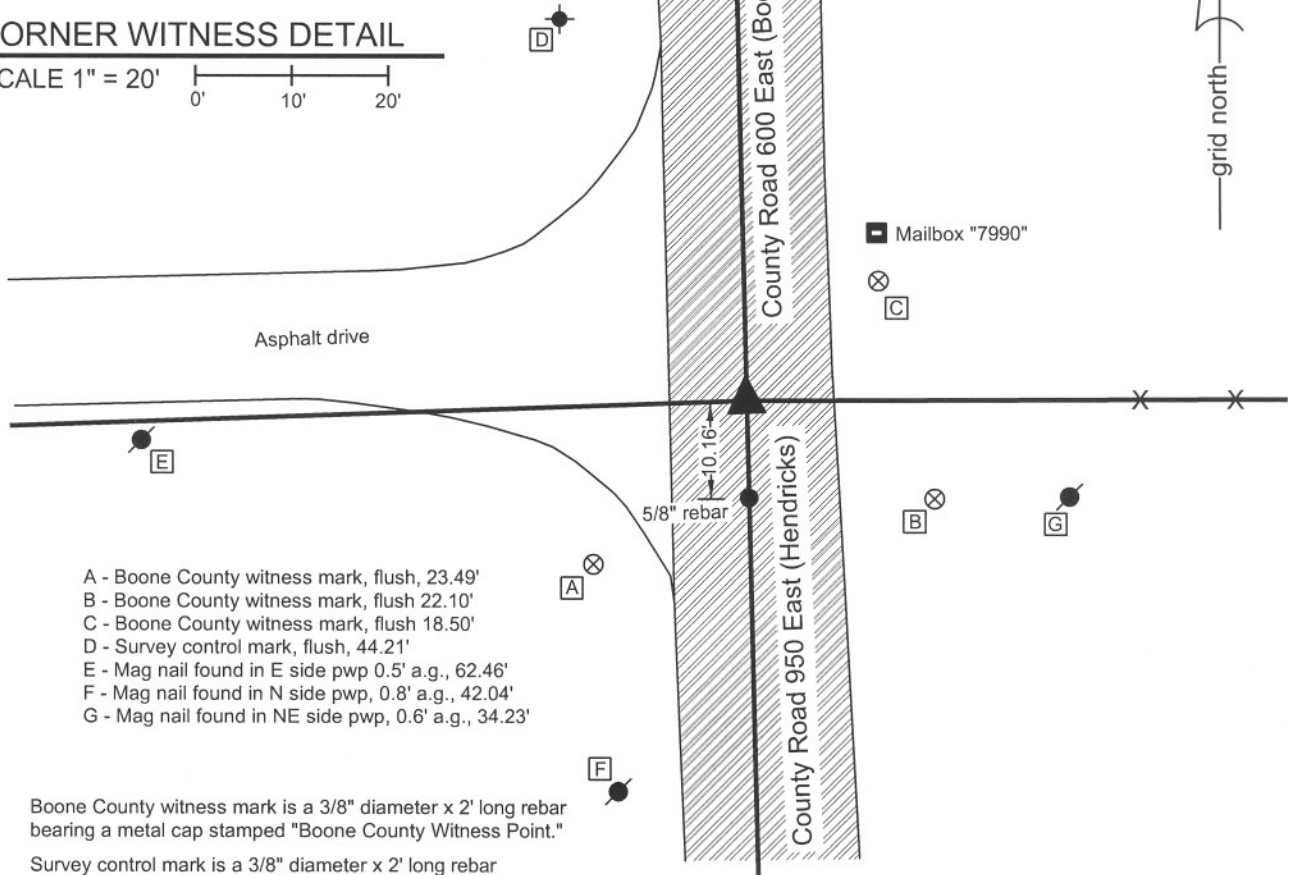
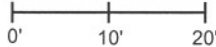
Indiana tie card references:

IN02_T17NR1E12_80

IN02_T17NR2E07_72

CORNER WITNESS DETAIL

SCALE 1" = 20'

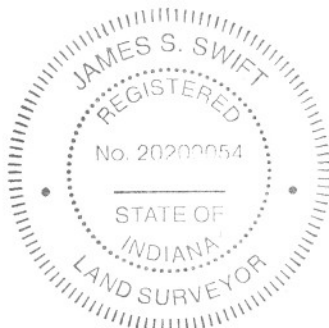


- A - Boone County witness mark, flush, 23.49'
- B - Boone County witness mark, flush 22.10'
- C - Boone County witness mark, flush 18.50'
- D - Survey control mark, flush, 44.21'
- E - Mag nail found in E side pwp 0.5' a.g., 62.46'
- F - Mag nail found in N side pwp, 0.8' a.g., 42.04'
- G - Mag nail found in NE side pwp, 0.6' a.g., 34.23'

Boone County witness mark is a 3/8" diameter x 2' long rebar bearing a metal cap stamped "Boone County Witness Point."

Survey control mark is a 3/8" diameter x 2' long rebar bearing a red plastic cap stamped "Control Point."

The Harrison monument was set directly over the high point of a granite stone found and accepted as marking the corner. This stone is referenced by the Office of the Hendricks County Surveyor as being found 9/20/1966. No other record of the stone was found. A piece of railroad rail on end was found against the stone on the southeast side, 4" below grade and a capped 5/8" rebar (Dodge SO 288) was found flush with the surface of the road, 0.26' S and 0.68' E of the corner. The rail was left in place and the rebar was removed. Another 5/8" rebar found 10.16' S. of the corner was left in place. The original monument was a post set in 1819. The record closing offset is 0 links, "Intersected West line at post."



Kenneth E. Hedge
Kenneth E. Hedge, County Surveyor

J. S. Swift
James S. Swift, IN LS 20200054

December 21, 2007

Eagle Township
Perry Township
Boone County

Brown Township
Hendricks County

Section 12 T17N, R1E	Section 7 T17N, R2E
Section 13 T17N, R1E	Section 18 T17N, R2E

PHOTOGRAPHIC DOCUMENTATION

Date of photography: 08/29/2007

Photograph showing found stone, railroad rail and 5/8 inch rebar. The rebar and rail are on the southeast edge of the stone. The stone is 11 inches by 11 inches near the top and 14 inches below the surface of the road. The Harrison monument was set over the approximate top, center point of the stone.



approx top center
point on stone

railroad rail

5/8" capped rebar