

SECTION CORNER RECORD

NE 300-1100

BOONE COUNTY SURVEYOR'S OFFICE

State Plane grid coordinates NAD83 (NSRS 2007):

North: 1762667.88 East: 3182916.59 (U.S. survey feet)

Type of monument: Harrison, 4" disk 'Section Corner'

Depth: One inch below adjacent road surface

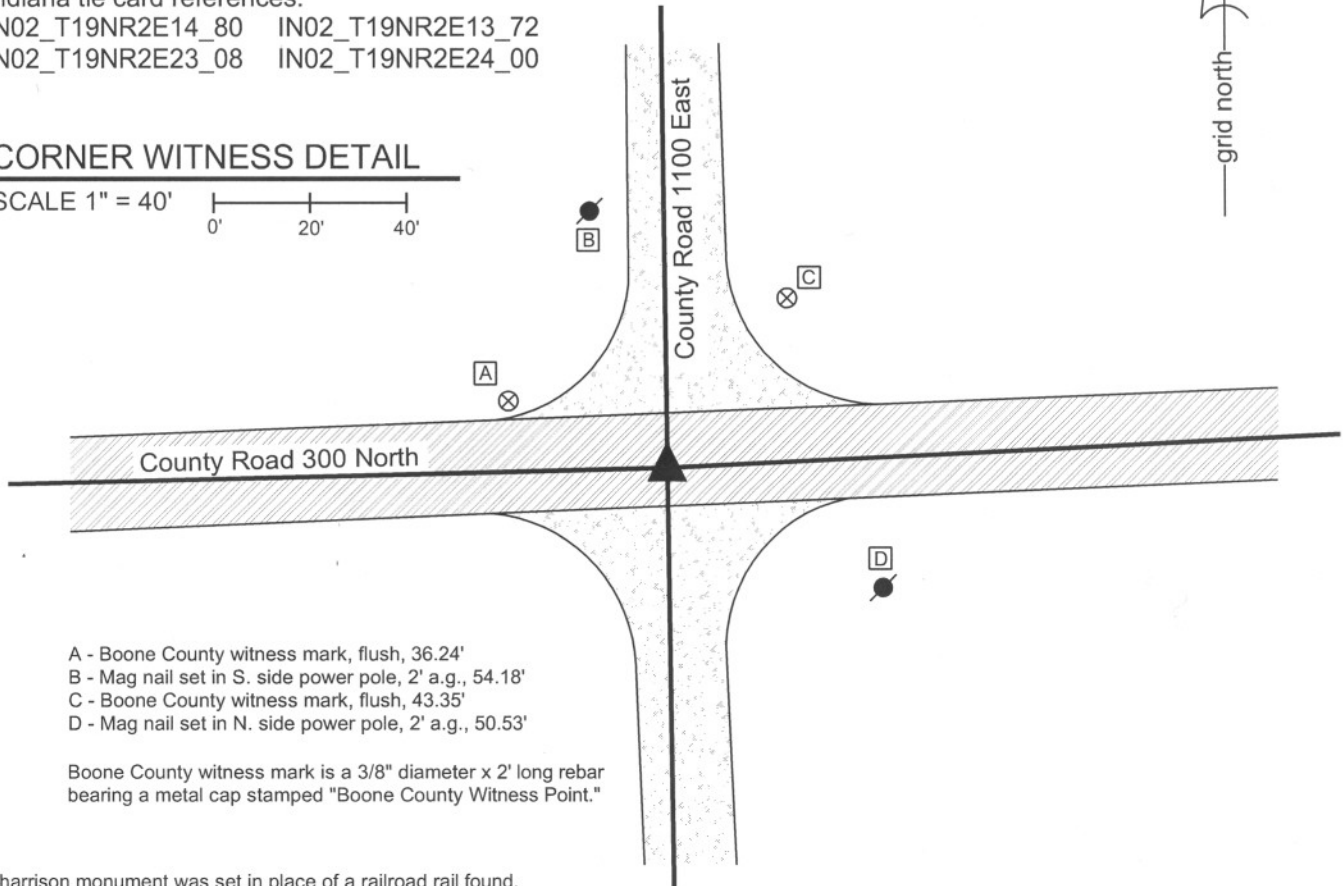
Indiana tie card references:

IN02_T19NR2E14_80 IN02_T19NR2E13_72

IN02_T19NR2E23_08 IN02_T19NR2E24_00

CORNER WITNESS DETAIL

SCALE 1" = 40'



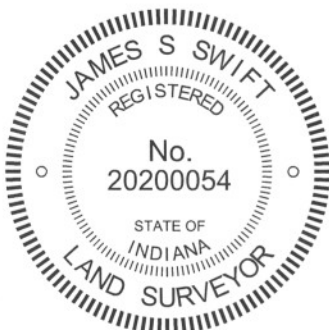
- A - Boone County witness mark, flush, 36.24'
- B - Mag nail set in S. side power pole, 2' a.g., 54.18'
- C - Boone County witness mark, flush, 43.35'
- D - Mag nail set in N. side power pole, 2' a.g., 50.53'

Boone County witness mark is a 3/8" diameter x 2' long rebar bearing a metal cap stamped "Boone County Witness Point."

The harrison monument was set in place of a railroad rail found.

A BCS record of January 20 & 26, 1900 states "dropped large rock at point." A BCS record of January 17, 1925 states "Rock, found in place (set two more rocks above)." No BCS tie card was found referencing this corner, but field notes from a BCS crew dated June 17, 1974 states "No stone. Found RRR." This corner was excavated on September 3, 2010. Prior to excavation a mag nail was visible in a hole at 2 inches below the surrounding asphalt. Excavation revealed a vertical section of railroad rail at 4 inches deep, below the nail. No other evidence of the corner was found in an area of excavation which extended to 4.5 feet N, 4.5 feet S, 2.5 feet W and 5.0 feet E of the mag and rail. The clay layer below the road begins at 2.5 feet deep. Excavation extended to or into the top of the clay layer. The stones called for in the previous records were not found. It is noted that the rail was found in 1974 but no source information was found pertaining to the establishment of the rail. It is known that the standard procedure of BCS field crews in the late 1960s and early 1970s was to remove a stone or stones, if found, and replace it or them with a vertical section of rail. It is also known that rails were set in that era in the event that no stone was found. The presence of the rail may indicate that the record stones were found, removed and replaced with the rail prior to the 1974 field work, but no record was found to demonstrate this and it is not known whether the rail replaced the stones or was set independently. The harrison monument was set in the position of the found nail and rail, both removed during excavation.

This corner was originally established as a wood post in June, 1821.



Kenneth E. Hedge
Kenneth E. Hedge, County Surveyor

James S. Swift
James S. Swift, IN LS 20200054
July 25, 2011

Marion Township

Section 14 T19N, R2E	Section 13 T19N, R2E
Section 23 T19N, R2E	Section 24 T19N, R2E

SECTION CORNER RECORD

NE 300-1150

BOONE COUNTY SURVEYOR'S OFFICE

State Plane grid coordinates NAD83 (CORS96):
North: 1762797.40 East: 3185590.49 (U.S. survey feet)

Type of monument: Harrison, 4" disk 'Section Corner'
Depth: One inch below adjacent road surface

Indiana tie card references:
IN02_T19NR2E13_76
IN02_T19NR2E24_04

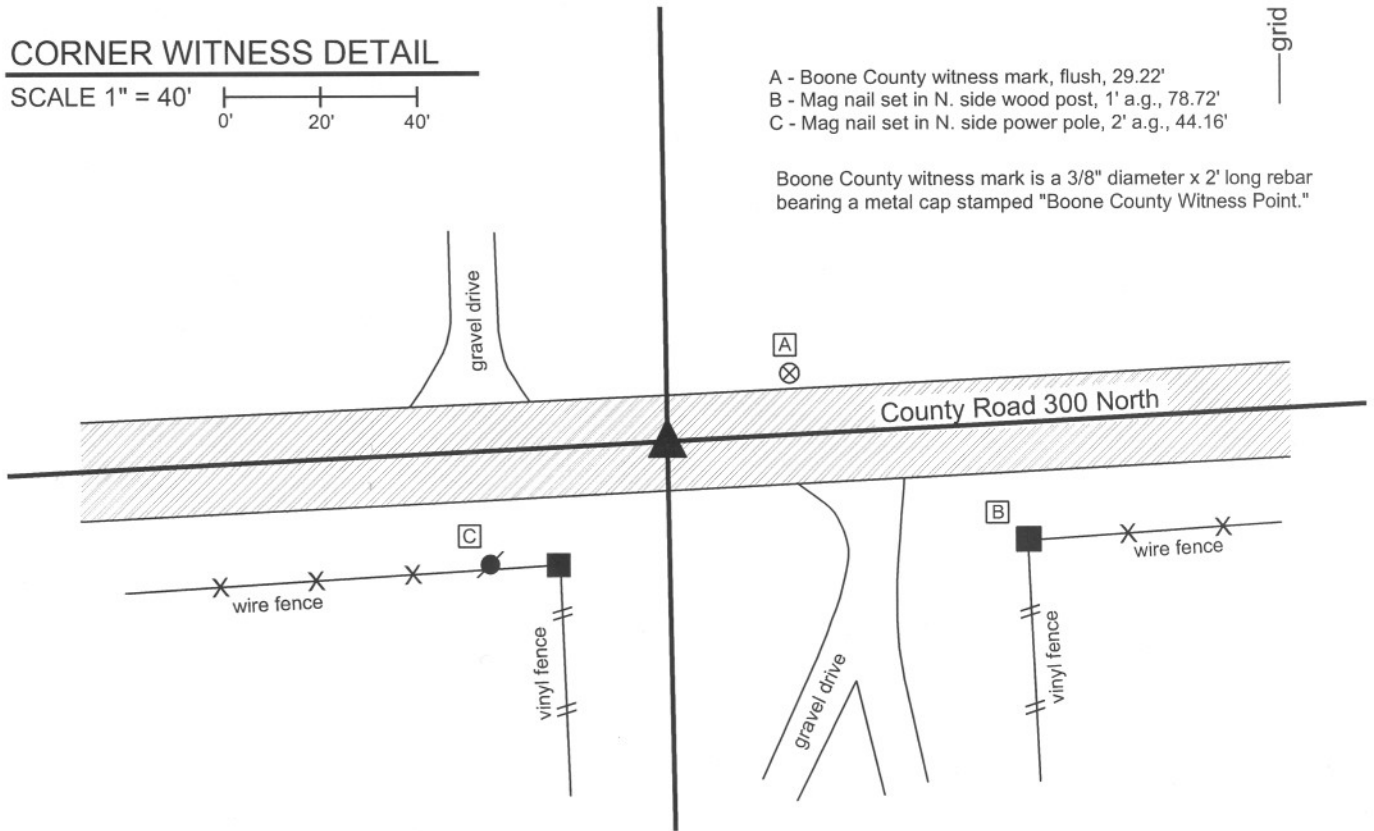


CORNER WITNESS DETAIL

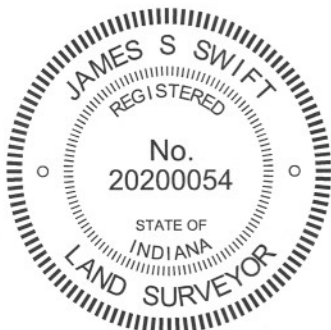
SCALE 1" = 40'
0' 20' 40'

- A - Boone County witness mark, flush, 29.22'
- B - Mag nail set in N. side wood post, 1' a.g., 78.72'
- C - Mag nail set in N. side power pole, 2' a.g., 44.16'

Boone County witness mark is a 3/8" diameter x 2' long rebar bearing a metal cap stamped "Boone County Witness Point."



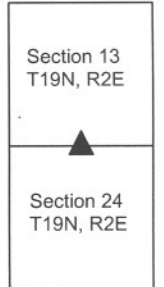
The harrison monument was set in place of a stone found.
 No specific descriptions of this corner were found in the BCS Surveyor's Record. It is noted as the terminal point for measurements in 1836. A BCS tie card which is neither dated nor attributed to an author or field crew shows the corner as a railroad spike with no documentation of source. Although the tie card is not dated, it is similar in appearance to other tie cards created in 1994.
 This corner was excavated on October 26, 2011. Prior to excavation a railroad spike was found at 1 inch deep in a hole in the asphalt. Excavation revealed a stone found at 7 inches deep. The stone was 7 inches E-W by 6 inches N-S by 9 inches tall. The bottom 3 inches of the stone were embedded in the clay layer below the road. No specific marks were found on the stone. The stone was accepted as the oldest and best available evidence of the corner. The stone was removed and replaced with a harrison monument set in the position of the top, high point of the stone. The railroad spike, removed during excavation had been 2.5 feet north and 1.0 foot east of the stone. It is noted that the railroad spike was north of the physical center of the road, whereas the stone was in the center and its position fit with the center of the road extended to the East and West.
 This corner was originally established as a wood post in July, 1821.



Kenneth E. Hedge
 Kenneth E. Hedge, County Surveyor

James S. Swift
 James S. Swift, IN LS 20200054
 March 1, 2012

Marion Twp



PHOTOGRAPHIC DOCUMENTATION

Date of photography: October 26, 2011

View of the stone as found.



View of the stone as found.



The hole from which the stone was removed, demonstrating that the stone was embedded in the clay layer below the road bed.



The stone as removed from the road bed.



For details and documentation, refer to related sheet "Section Corner Record."

SECTION CORNER RECORD

BOONE COUNTY SURVEYOR'S OFFICE

NE 300-1200

State Plane grid coordinates NAD83 (CORS96):

CORNER 1: North: 1762932.69 East: 3188273.78 (U.S. survey feet)

CORNER 2: North: 1762894.95 East: 3188273.67 (U.S. survey feet)

Type of monument: Harrison, 4" disk 'Section Corner'

Depth: One inch below adjacent road surface

Indiana tie card references:

IN02_T19NR2E13_80 IN02_T19NR3E18_72

IN02_T19NR2E24_08 IN02_T19NR3E19_00

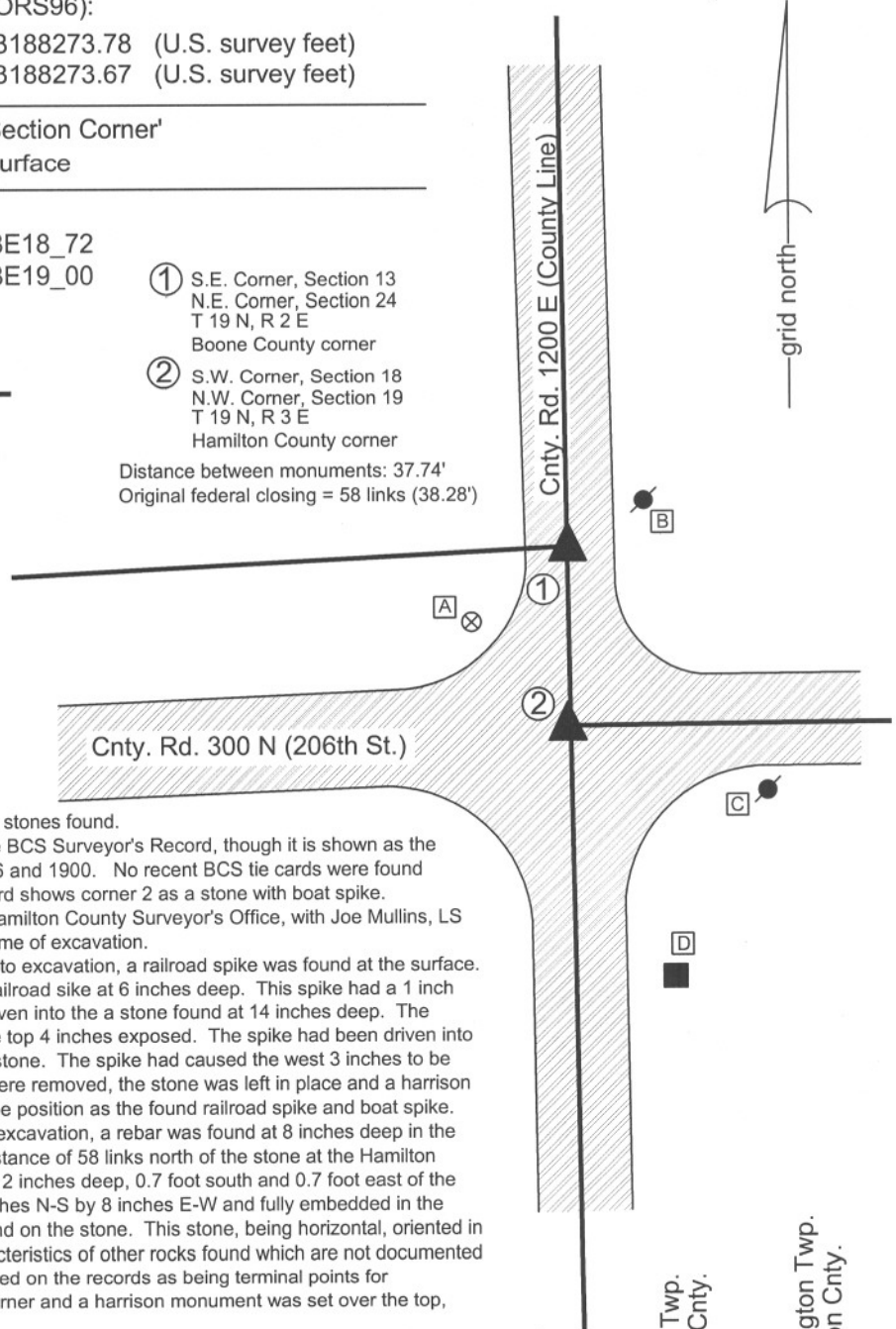
CORNER WITNESS DETAIL

SCALE 1" = 40'

- A - Boone County witness mark, flush, 25.78' to corner 1, 29.43' to corner 2
- B - Mag nail in NW side power pole, 1.5 a.g. 17.95' to corner 1, 50.37' to corner 2
- C - Mag nail in N. side power pole, 1.8' a.g., 65.37' to corner 1, 44.27' to corner 2
- D - Mag nail in NE corner, wood sign post 91.50' to corner 1, 56.12' to corner 2

- ① S.E. Corner, Section 13
N.E. Corner, Section 24
T 19 N, R 2 E
Boone County corner
- ② S.W. Corner, Section 18
N.W. Corner, Section 19
T 19 N, R 3 E
Hamilton County corner

Distance between monuments: 37.74'
Original federal closing = 58 links (38.28')

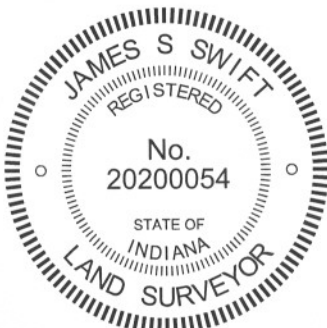


The harrison monuments at both corners were set over stones found.

No specific descriptions of this corner were found in the BCS Surveyor's Record, though it is shown as the terminal point for measurements on records dated 1836 and 1900. No recent BCS tie cards were found referencing this corner. A 1981 Hamilton County tie card shows corner 2 as a stone with boat spike. Both corners were excavated in cooperation with the Hamilton County Surveyor's Office, with Joe Mullins, LS and other representatives of that office present at the time of excavation.

Corner 2 was excavated first, on July 12, 2012. Prior to excavation, a railroad spike was found at the surface. Excavation revealed a "boat spike" directly below the railroad sike at 6 inches deep. This spike had a 1 inch diameter shaft, 27 inches long. The shaft had been driven into the a stone found at 14 inches deep. The stone measures 9 inches E-W by 7 inches N-S with the top 4 inches exposed. The spike had been driven into the high point of the stone, near the west edge of the stone. The spike had caused the west 3 inches to be split off from the main body of the stone. The spikes were removed, the stone was left in place and a harrison monument was set over the top of the stone in the same position as the found railroad spike and boat spike. Corner 1 was excavated on August 20, 2012. Prior to excavation, a rebar was found at 8 inches deep in the roadway at approximately the record federal closing distance of 58 links north of the stone at the Hamilton County corner. Excavation revealed a stone found at 12 inches deep, 0.7 foot south and 0.7 foot east of the rebar. The stone was found to be 5 inches tall by 8 inches N-S by 8 inches E-W and fully embedded in the clay layer below the road. No specific marks were found on the stone. This stone, being horizontal, oriented in cardinal directions and not marked, matches the characteristics of other rocks found which are not documented as having been set by the County Surveyor but are noted on the records as being terminal points for measurements. The stone was held as marking the corner and a harrison monument was set over the top, center of the stone.

The stone at the closing corner (Hamilton County corner) is slightly west of the range line as defined by the stones at the standard corners.



Kenneth E. Hedge
Kenneth E. Hedge, County Surveyor

James S. Swift
James S. Swift, IN LS 20200054
January 15, 2013

Section 13 T19N, R2E	Section 18 T19N, R3E
Section 24 T19N, R2E	Section 19 T19N, R3E

Marion Twp.
Boone Cnty.

Washington Twp.
Hamilton Cnty.

PHOTOGRAPHIC DOCUMENTATION

Date of photography: July 12 & August 20, 2012

View of the stone at the Boone County corner (corner 1) as first exposed.



The top of the boat spike found driven into the stone at the Hamilton County corner (corner 2).



The stone at corner 1.



The stone at corner 2, broken due to the fact that the boat spike shown above had been driven into it.



The stone at corner 1.



The stone at corner 2.



For details and documentation, refer to related sheet "Section Corner Record."

SECTION CORNER RECORD

NE 350-1100

BOONE COUNTY SURVEYOR'S OFFICE

State Plane grid coordinates NAD83 (NSRS 2007):

North: 1765300.89 East: 3182883.36 (U.S. survey feet)

Type of monument: Harrison, 4" disk 'Section Corner'

Depth: Six inches below adjacent gravel road surface.

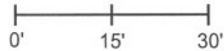
Indiana tie card references:

IN02_T19NR2E13_36

IN02_T19NR2E14_44

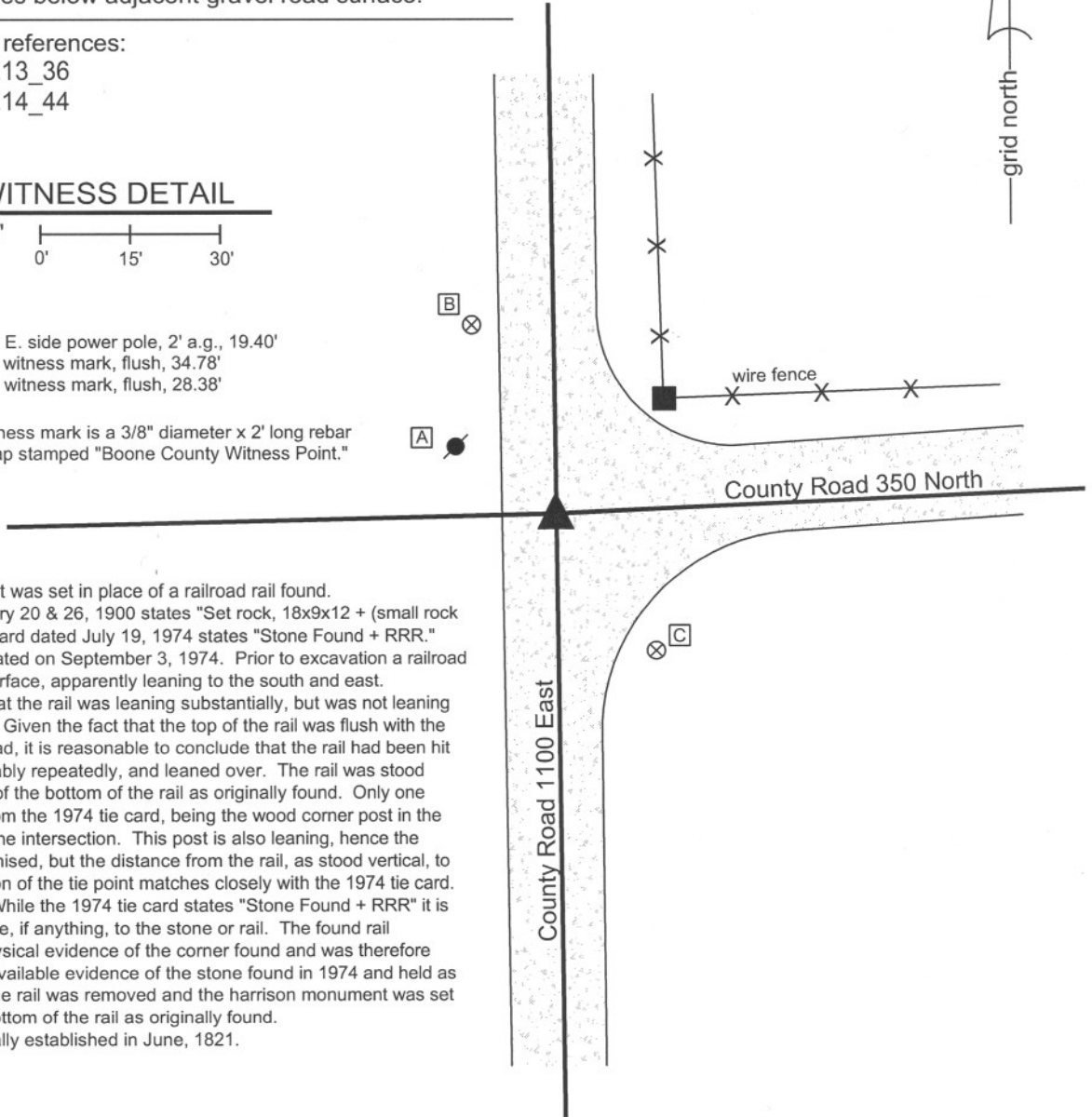
CORNER WITNESS DETAIL

SCALE 1" = 30'

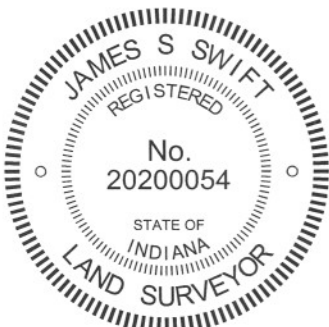


- A - Mag nail set in E. side power pole, 2' a.g., 19.40'
- B - Boone County witness mark, flush, 34.78'
- C - Boone County witness mark, flush, 28.38'

Boone County witness mark is a 3/8" diameter x 2' long rebar bearing a metal cap stamped "Boone County Witness Point."



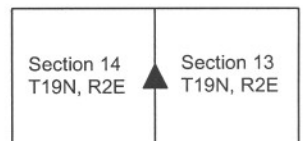
The harrison monument was set in place of a railroad rail found. A BCS record of January 20 & 26, 1900 states "Set rock, 18x9x12 + (small rock beneath)." A BCS tie card dated July 19, 1974 states "Stone Found + RRR." This corner was excavated on September 3, 1974. Prior to excavation a railroad rail was found at the surface, apparently leaning to the south and east. Excavation revealed that the rail was leaning substantially, but was not leaning over any other object. Given the fact that the top of the rail was flush with the surface of the gravel road, it is reasonable to conclude that the rail had been hit by a road grader, probably repeatedly, and leaned over. The rail was stood vertical in the position of the bottom of the rail as originally found. Only one distance tie remains from the 1974 tie card, being the wood corner post in the northeast quadrant of the intersection. This post is also leaning, hence the distance tie is compromised, but the distance from the rail, as stood vertical, to the approximate position of the tie point matches closely with the 1974 tie card. No stone was found. While the 1974 tie card states "Stone Found + RRR" it is not clear what was done, if anything, to the stone or rail. The found rail represents the only physical evidence of the corner found and was therefore accepted as the best available evidence of the stone found in 1974 and held as marking the corner. The rail was removed and the harrison monument was set in the position of the bottom of the rail as originally found. This corner was originally established in June, 1821.



Kenneth E. Hedge
 Kenneth E. Hedge, County Surveyor

James S. Swift
 James S. Swift, IN LS 20200054
 July 25, 2011

Marion Township



SECTION CORNER RECORD

NE 350-1200

BOONE COUNTY SURVEYOR'S OFFICE

State Plane grid coordinates NAD83 (CORS96):

Corner 1: North: 1765586.91 East: 3188235.76 (U.S. survey feet)

Corner 2: North: 1765554.59 East: 3188235.54 (U.S. survey feet)

Type of monument: Harrison, 4" disk 'Section Corner'

Depth: One inch below adjacent road surface

Indiana tie card references:

IN02_T19NR2E13_44

IN02_T19NR3E18_36

CORNER WITNESS DETAIL

SCALE 1" = 30'

A - Mag nail set in E. side wood post, 6 in. a.g.,

20.77' to corner 1, 37.54' to corner 2

B - Boone County witness mark, flush,

19.41' to corner 1, 16.50' to corner 2

C - Mag nail set in W. side wood post, 1' a.g.,

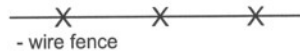
35.56' to corner 1, 15.28' to corner 2

Boone County witness mark is a 3/8" diameter x 2' long rebar bearing a metal cap stamped "Boone County Witness Point."

① E. 1/4. Corner, Section 13
T 19 N, R 2 E
Boone County corner

② W. 1/4 Corner, Section 18
T 19 N, R 3 E
Hamilton County corner

Distance between monuments: 32.32'



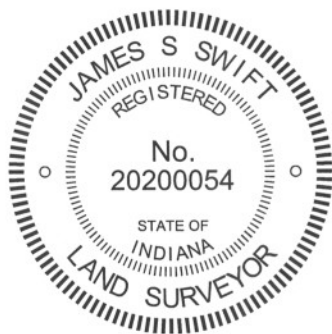
The harrison monuments were set over stones found.

A BCS record of September 30, 1879 states "Found from stump of Oak. Set Rock 17.13.12 +." A BCS tie card dated July 24, 1974 states "found RRR."

Both corners were excavated in cooperation with the Hamilton County Surveyor's Office, with Joe Mullins, LS and other representatives of that office present at the time of excavation.

Corner 1 was excavated on July 27, 2012. Prior to excavation a vertical section of railroad rail was found at 8 inches deep in a hole in the asphalt. Excavation revealed a stone found at 7 inches deep, 2.8 feet east and 0.7 foot south of the rail. With 7 inches of the top of the stone exposed, it measured 12 inches E-W by 12 inches N-S. The west side of the stone was fully exposed and found to measure 16 inches. The stone was accepted as being the same rock described in the 1879 record. No specific marks were found. The stone was left in place, the top of the stone was encased in concrete and a harrison monument was set over the top, center of the stone.

Corner 2 was excavated on August 21, 2012. Prior to excavation an iron pin was found at 8 inches deep. The iron pin was subsequently determined to be a square shafted spike, 12 inches long. Excavation revealed a stone found at 10 inches deep, 5.1 feet east and 0.5 foot south of the spike. The stone was found to be 7 inches E-W by 8 inches N-S by approximately 5 inches tall. The stone was fully embedded in the clay layer below the road bed. The stone was left in place and a harrison monument was set over the top, center of the stone. This monument is 0.7 foot west of the range line as defined by the standard corners.

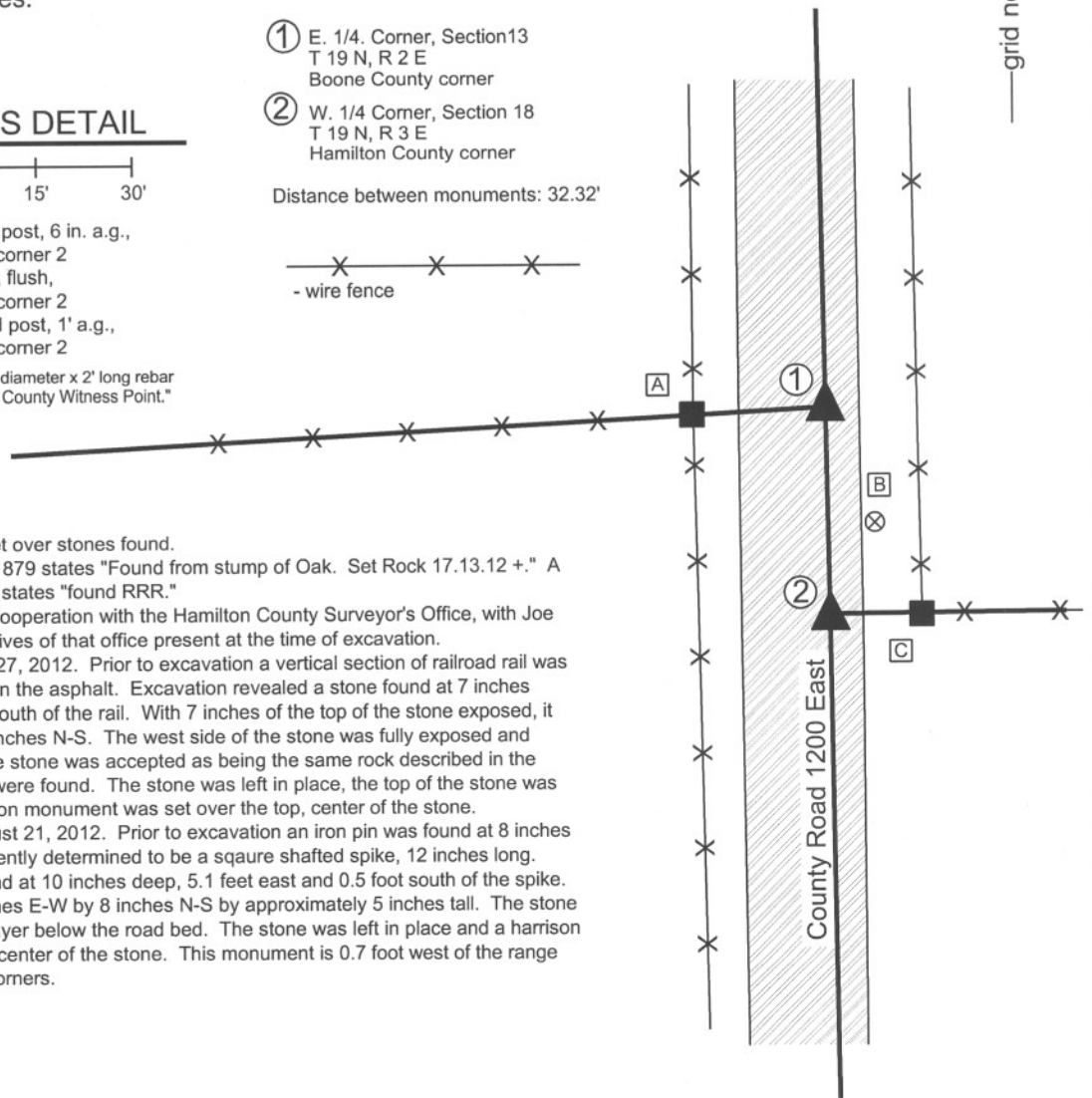
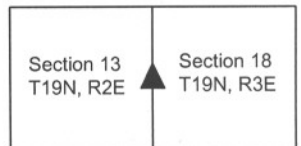


Kenneth E. Hedge
Kenneth E. Hedge, County Surveyor

James S. Swift
James S. Swift, IN LS 20200054
January 15, 2013

Marion Twp.
Boone Cnty.

Washington Twp.
Hamilton Cnty.



PHOTOGRAPHIC DOCUMENTATION

Date of photography: July 27 & August 21, 2012

View of the stone at the Boone County corner (corner 1) as first exposed.



View of the stone at corner 1 from the west.



View of the stone at the Hamilton County corner (corner 2) from the west.



View of the stone at corner 1 from the south.



View of the stone at corner 2 from the east.



For details and documentation, refer to related sheet "Section Corner Record."

SECTION CORNER RECORD

NE 400-1100

BOONE COUNTY SURVEYOR'S OFFICE

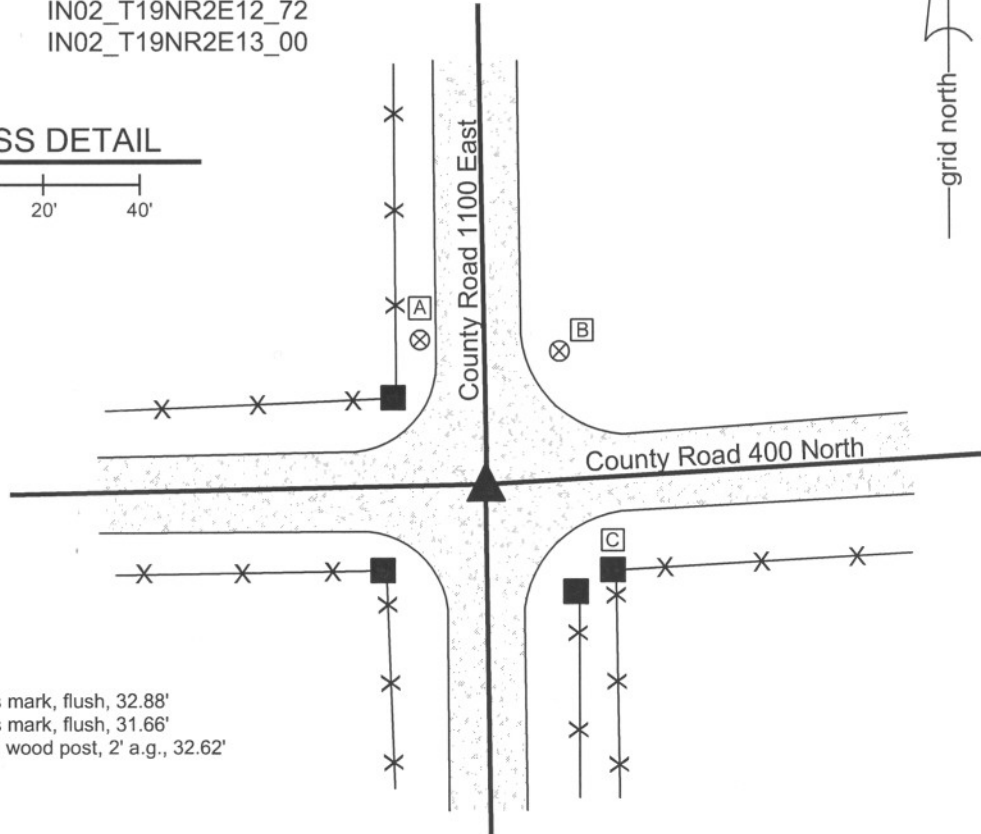
State Plane grid coordinates NAD83 (NSRS 2007):
North: 1767944.23 East: 3182847.82 (U.S. survey feet)

Type of monument: Harrison, 4" disk 'Section Corner'
Depth: six inches below adjacent gravel road surface

Indiana tie card references:
IN02_T19NR2E11_80 IN02_T19NR2E12_72
IN02_T19NR2E14_08 IN02_T19NR2E13_00

CORNER WITNESS DETAIL

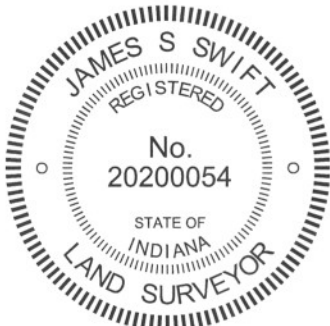
SCALE 1" = 40'



- A - Boone County witness mark, flush, 32.88'
- B - Boone County witness mark, flush, 31.66'
- C - Mag nail set in N. side wood post, 2' a.g., 32.62'

The harrison monument was set in place of a stone found and also in place of the top of a section of railroad rail found leaning over the stone. A BCS record of May 7-8, 1861 states "Reestablished from one tree still some remains of the other. Set Stone 12.8 by 6 in." A BCS tie card dated July 19, 1974 states "Found stone + RRR."

This corner was excavated on August 26, 2010. Prior to excavation, two 5/8 inch diameter rebars were adjacent to each other at approximately 3 inches below the surface of the gravel road. Excavation revealed the top of a railroad rail at approximately 4 inches, slightly south and east of the rebars. The rail was leaning substantially towards the south. Further excavation revealed that the rail was leaning over the top of a stone, the top of which was found at 13 inches below the level of the surface of the road. The stone was larger than the 1861 record stone, measuring 18 inches tall by 16 inches N-S by 12 inches E-W. Approximately the bottom 10 inches of the stone were embedded in the clay layer below the road while the top 8 inches were protruding into the base of the road. The stone was removed and no other evidence of the corner was found. Excavation extended 4 feet to the north but no further excavation was performed south of the corner due to the presence of a large bundled phone line crossing the intersection near the corner, per IUPPS. The rail was leaning such that the top of the rail was directly over the physical top, center of the stone. The rebars had been approximately three inches northwest of this point. The rebars, rail and stone were removed during excavation and a harrison monument was set at the position of the top of the rail and the top of the stone. This corner was originally established as a wood post in June, 1821.



Kenneth E. Hedge
Kenneth E. Hedge, County Surveyor

James S. Swift
James S. Swift, IN LS 20200054
July 25, 2011

Marion Twp

Section 11 T19N, R2E	Section 12 T19N, R2E
Section 14 T19N, R2E	Section 13 T19N, R2E

PHOTOGRAPHIC DOCUMENTATION

Date of photography: September 13, 2010

View of the stone as first exposed.



View of the stone partially exposed.



View from the north, looking across the stone and south along County Road 1100 East.



View of the stone from above and north.



The stone and railroad rail (rail is in the grass) after being removed from the road bed.



For details and documentation, refer to related sheet "Section Corner Record."

SECTION CORNER RECORD

NE 400-1150

BOONE COUNTY SURVEYOR'S OFFICE

State Plane grid coordinates NAD83 (NSRS 2007):
North: 1768103.46 East: 3185517.59 (U.S. survey feet)

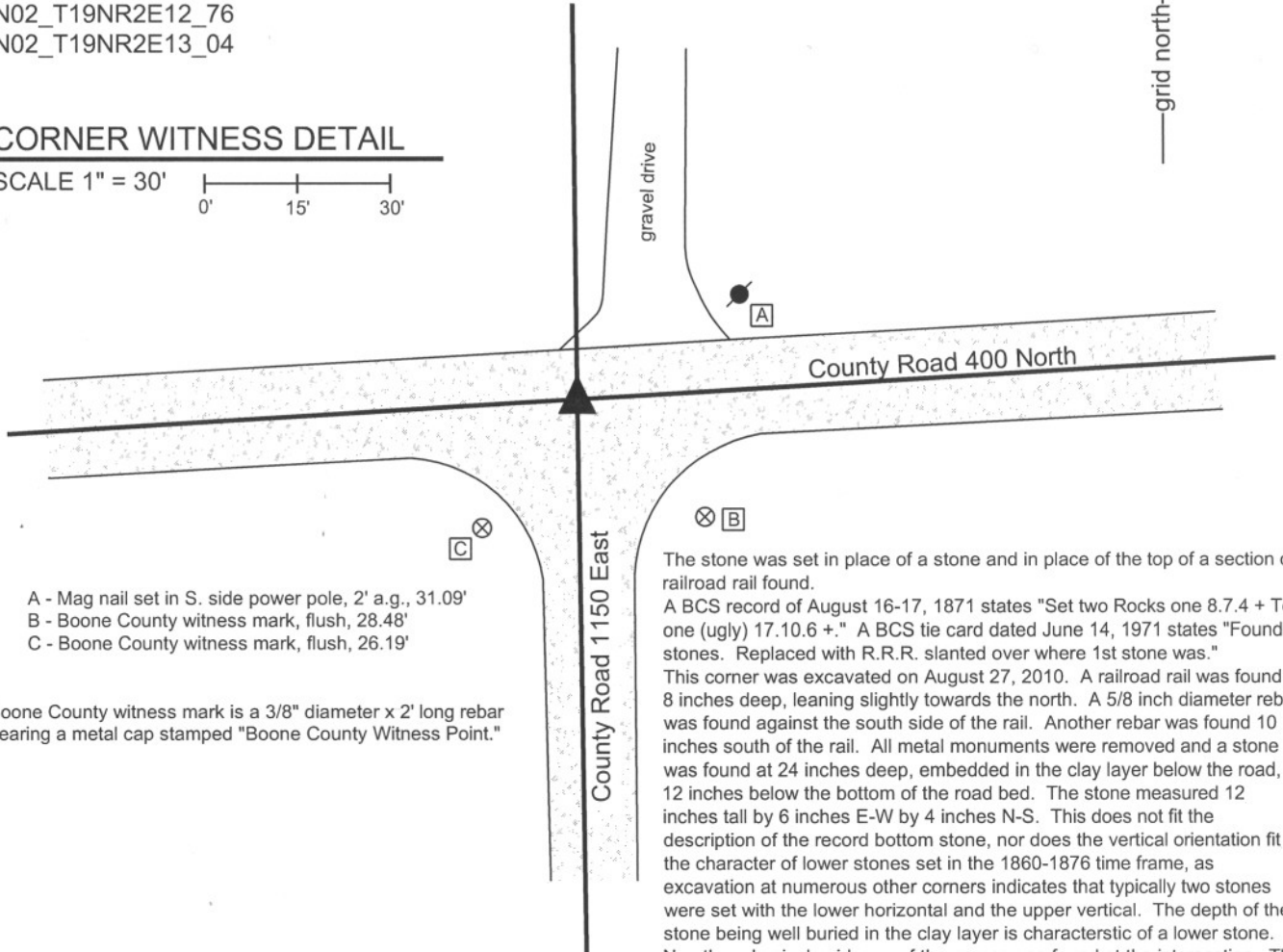
Type of monument: Harrison, 4" disk 'Section Corner'
Depth: Six inches below the gravel road surface.

Indiana tie card references:
IN02_T19NR2E12_76
IN02_T19NR2E13_04



CORNER WITNESS DETAIL

SCALE 1" = 30'
0' 15' 30'



- A - Mag nail set in S. side power pole, 2' a.g., 31.09'
- B - Boone County witness mark, flush, 28.48'
- C - Boone County witness mark, flush, 26.19'

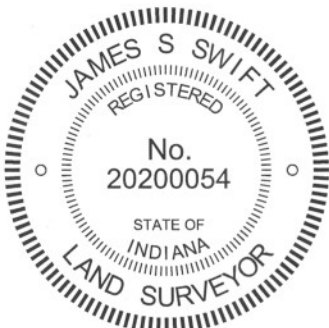
Boone County witness mark is a 3/8" diameter x 2' long rebar bearing a metal cap stamped "Boone County Witness Point."

The stone was set in place of a stone and in place of the top of a section of railroad rail found.

A BCS record of August 16-17, 1871 states "Set two Rocks one 8.7.4 + Top one (ugly) 17.10.6 +." A BCS tie card dated June 14, 1971 states "Found 2 stones. Replaced with R.R.R. slanted over where 1st stone was."

This corner was excavated on August 27, 2010. A railroad rail was found at 8 inches deep, leaning slightly towards the north. A 5/8 inch diameter rebar was found against the south side of the rail. Another rebar was found 10 inches south of the rail. All metal monuments were removed and a stone was found at 24 inches deep, embedded in the clay layer below the road, 12 inches below the bottom of the road bed. The stone measured 12 inches tall by 6 inches E-W by 4 inches N-S. This does not fit the description of the record bottom stone, nor does the vertical orientation fit the character of lower stones set in the 1860-1876 time frame, as excavation at numerous other corners indicates that typically two stones were set with the lower horizontal and the upper vertical. The depth of the stone being well buried in the clay layer is characteristic of a lower stone. No other physical evidence of the corner was found at the intersection. The top of the rail as originally found was over the south edge of the stone and rust stains on the south edge of the stone demonstrate that the rail was against the edge. The 1971 reference to the rail being "slanted over where the 1st stone was" was held and the harrison monument was set in the position of the top of the rail as originally found.

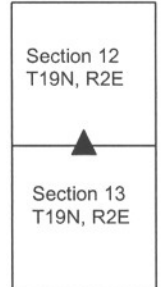
This corner was originally established as a wood post in June, 1821.



Kenneth E. Hedge
Kenneth E. Hedge, County Surveyor

James S. Swift
James S. Swift, IN LS 20200054
July 25, 2011

Marion Twp



PHOTOGRAPHIC DOCUMENTATION

Date of photography: August 27, 2010

The railroad rail, as found, leaning to the north.



The stone found below the rail.



The stone, removed from the clay below the road bed and stood up in the orientation in which it was found.



For details and documentation, refer to related sheet "Section Corner Record."

SECTION CORNER RECORD

NE 400-1200

BOONE COUNTY SURVEYOR'S OFFICE

State Plane grid coordinates NAD83 (CORS96):

Corner 1: North: 1768260.94 East: 3188187.94 (U.S. survey feet)

Corner 2: North: 1768184.28 East: 3188188.13 (U.S. survey feet)

Type of monument: Harrison, 4" disk 'Section Corner'

Depth: One inch below adjacent road surface

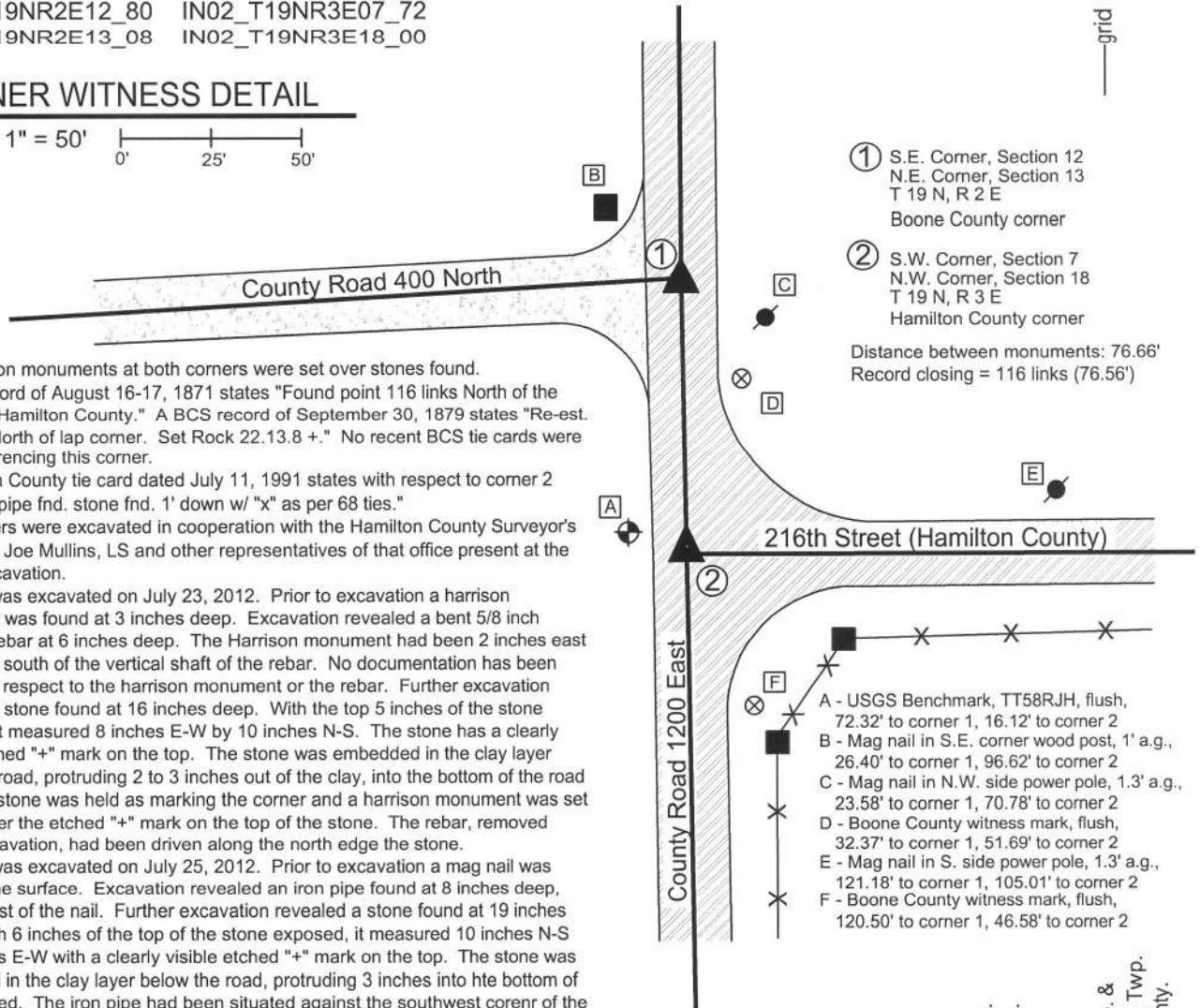
Indiana tie card references:

IN02_T19NR2E12_80 IN02_T19NR3E07_72

IN02_T19NR2E13_08 IN02_T19NR3E18_00

CORNER WITNESS DETAIL

SCALE 1" = 50'



① S.E. Corner, Section 12
N.E. Corner, Section 13
T 19 N, R 2 E
Boone County corner

② S.W. Corner, Section 7
N.W. Corner, Section 18
T 19 N, R 3 E
Hamilton County corner

Distance between monuments: 76.66'
Record closing = 116 links (76.56')

The Harrison monuments at both corners were set over stones found. A BCS record of August 16-17, 1871 states "Found point 116 links North of the corner for Hamilton County." A BCS record of September 30, 1879 states "Re-est. 116 links North of lap corner. Set Rock 22.13.8 +." No recent BCS tie cards were found referencing this corner.

A Hamilton County tie card dated July 11, 1991 states with respect to corner 2 "1/2" iron pipe fnd. stone fnd. 1' down w/ "x" as per 68 ties."

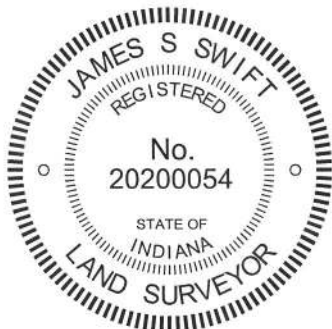
Both corners were excavated in cooperation with the Hamilton County Surveyor's Office with Joe Mullins, LS and other representatives of that office present at the time of excavation.

Corner 1 was excavated on July 23, 2012. Prior to excavation a Harrison monument was found at 3 inches deep. Excavation revealed a bent 5/8 inch diameter rebar at 6 inches deep. The Harrison monument had been 2 inches east and 1 inch south of the vertical shaft of the rebar. No documentation has been found with respect to the Harrison monument or the rebar. Further excavation revealed a stone found at 16 inches deep. With the top 5 inches of the stone exposed, it measured 8 inches E-W by 10 inches N-S. The stone has a clearly visible etched "+" mark on the top. The stone was embedded in the clay layer below the road, protruding 2 to 3 inches out of the clay, into the bottom of the road bed. The stone was held as marking the corner and a Harrison monument was set directly over the etched "+" mark on the top of the stone. The rebar, removed during excavation, had been driven along the north edge of the stone.

Corner 2 was excavated on July 25, 2012. Prior to excavation a mag nail was found at the surface. Excavation revealed an iron pipe found at 8 inches deep, slightly west of the nail. Further excavation revealed a stone found at 19 inches deep. With 6 inches of the top of the stone exposed, it measured 10 inches N-S by 7 inches E-W with a clearly visible etched "+" mark on the top. The stone was embedded in the clay layer below the road, protruding 3 inches into the bottom of the road bed. The iron pipe had been situated against the southwest corner of the stone. The stone was left in place and a Harrison monument was set directly over the etched "+" mark. This point is 1.2 feet west of the range line as defined by the standard corners.

- A - USGS Benchmark, TT58RJH, flush, 72.32' to corner 1, 16.12' to corner 2
- B - Mag nail in S.E. corner wood post, 1' a.g., 26.40' to corner 1, 96.62' to corner 2
- C - Mag nail in N.W. side power pole, 1.3' a.g., 23.58' to corner 1, 70.78' to corner 2
- D - Boone County witness mark, flush, 32.37' to corner 1, 51.69' to corner 2
- E - Mag nail in S. side power pole, 1.3' a.g., 121.18' to corner 1, 105.01' to corner 2
- F - Boone County witness mark, flush, 120.50' to corner 1, 46.58' to corner 2

Marion Twp.
Boone Cnty.
Adams Twp. &
Washington Twp.
Hamilton Cnty.



Kenneth E. Hedge
Kenneth E. Hedge, County Surveyor

James S. Swift
James S. Swift, IN LS 20200054

February 6, 2013

Section 12 T19N, R2E	Section 7 T19N, R3E
Section 13 T19N, R2E	Section 18 T19N, R3E

PHOTOGRAPHIC DOCUMENTATION
Date of photography: July 23 & 25, 2012

View of the stone at the Boone County corner (corner 1), as first exposed.



View of the stone at corner 1, washed to show the etched mark on the top of the stone.



View of the from the south, looking across the stone at corner 1 and north along County Road 1200 East (County Line Road.)



The stone at the Hamilton County corner (corner 2).



The stone at corner 2 from above.



For details and documentation, refer to related sheet "Section Corner Record."