

SECTION CORNER RECORD

BOONE COUNTY SURVEYOR'S OFFICE

SW 100-700

State Plane grid coordinates NAD83 (2011):
 North: 1740021.24 East: 3087924.57 (U.S. survey feet)

Type of monument: Harrison, 4" disk 'Section Corner'
 Depth: Six inches below adjacent road surface

Indiana tie card references:
 IN02_T18NR2W01_72 IN02_T18NR2W02_80
 IN02_T18NR2W11_08 IN02_T18NR2W12_00

CORNER WITNESS DETAIL

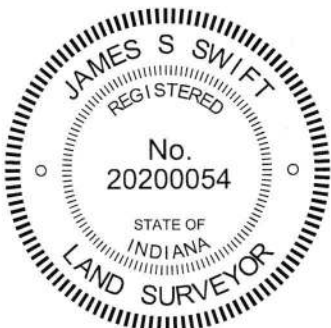
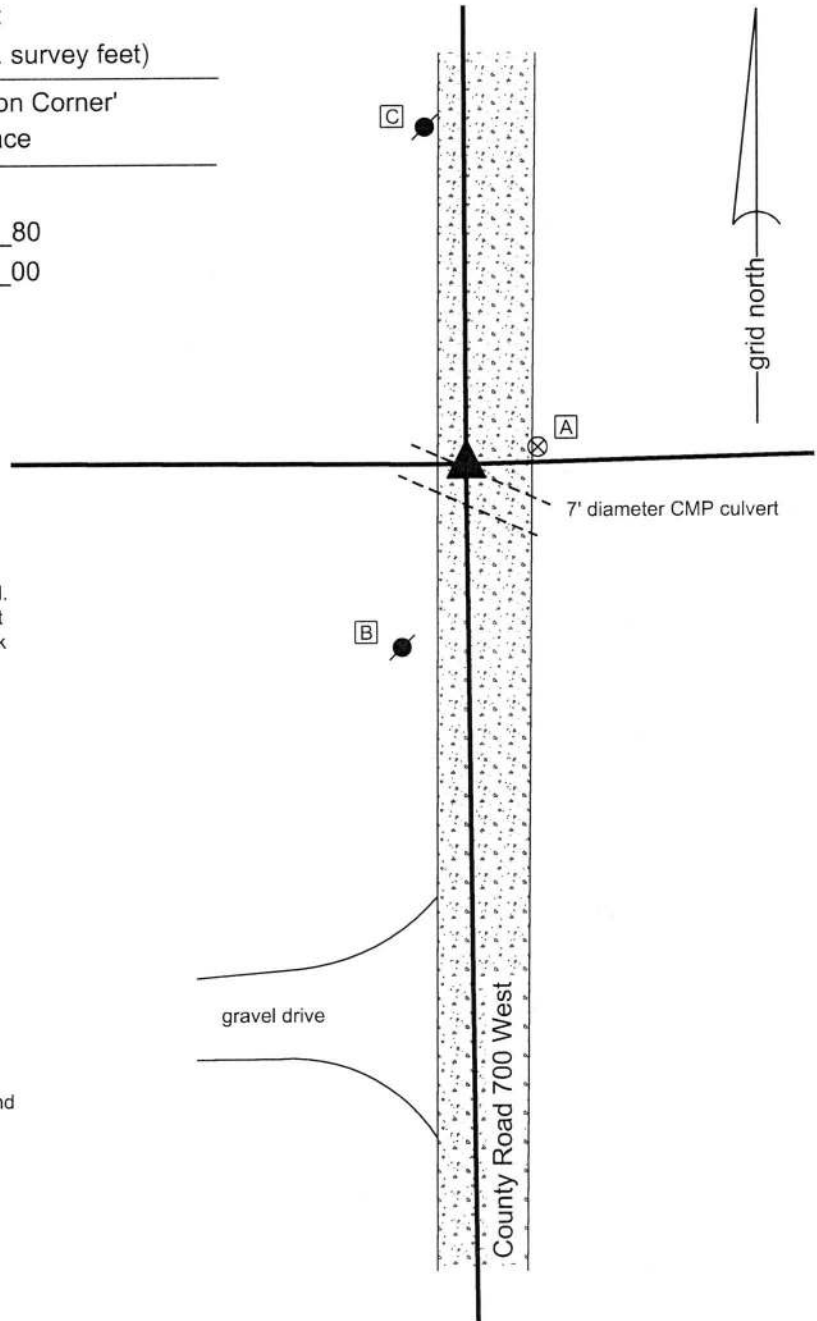
SCALE 1" = 40'

- A - Boone County witness mark, flush, 15.2'
- B - Mag nail set in N. side power pole, 2' a.g., 40.3'
- C - Mag nail set in E. side power pole, 2' a.g., 70.7'

The Harrison monument was set in place of a rebar found. A BCS record of January 21-22, 1873 states, with respect to this corner, "Reest. from stumps of both trees. Set rock 16.12.8 +."

No recent BCS tie cards were found referencing this corner. The corner is shown as a rebar found on The Farrow Minor Plat, Plat Book 11, page 10 and the Taylor Minor Plat, Plat Book 20, page 71, all as recorded in the Office of the Boone County Recorder. Both plats were certified by Jerry L. Carter, LS No. S0350. The rebar called on the two plats was found at 7 inches deep in the gravel roadway. The rebar was 5/8 inch diameter with a red plastic cap stamped 'Witness Point.' The position of the rebar fit well with the relative positions of other monuments and corners shown on the plats. This corner falls at the north edge of a large corrugated metal pipe culvert under County Road 700 West. No possibility of ancient evidence exists, due to the presence of the pipe and obvious disruption of the area associated with installing the pipe. The position of the found rebar works well with the relative positions of proximate corners. The rebar was held as marking the corner. It was removed and replaced with a Harrison monument in the same position on November 25, 2019.

This corner was originally established in 1820.



Kenneth E. Hedge
 Kenneth E. Hedge, County Surveyor

James S. Swift
 James S. Swift, IN LS 20200054
 December 18, 2019

Jefferson Township

| | |
|-------------------------|-------------------------|
| Section 2 T18N, R2W | Section 1 T18N, R2W |
| Section 11 T18N, R2W | Section 12 T18N, R2W |

An arrow points to the center of the four-section grid.

SECTION CORNER RECORD

SW 100-750

BOONE COUNTY SURVEYOR'S OFFICE

State Plane grid coordinates NAD83 (2011):

North: 1740033.76 East: 3085270.58 (U.S. survey feet)

Type of monument: Harrison, 4" disk 'Section Corner'

Depth: 2 inches (N) to 5 inches (S) above adjoining ground

Indiana tie card references:

IN02_T18NR2W02_76

IN02_T18NR2W11_04

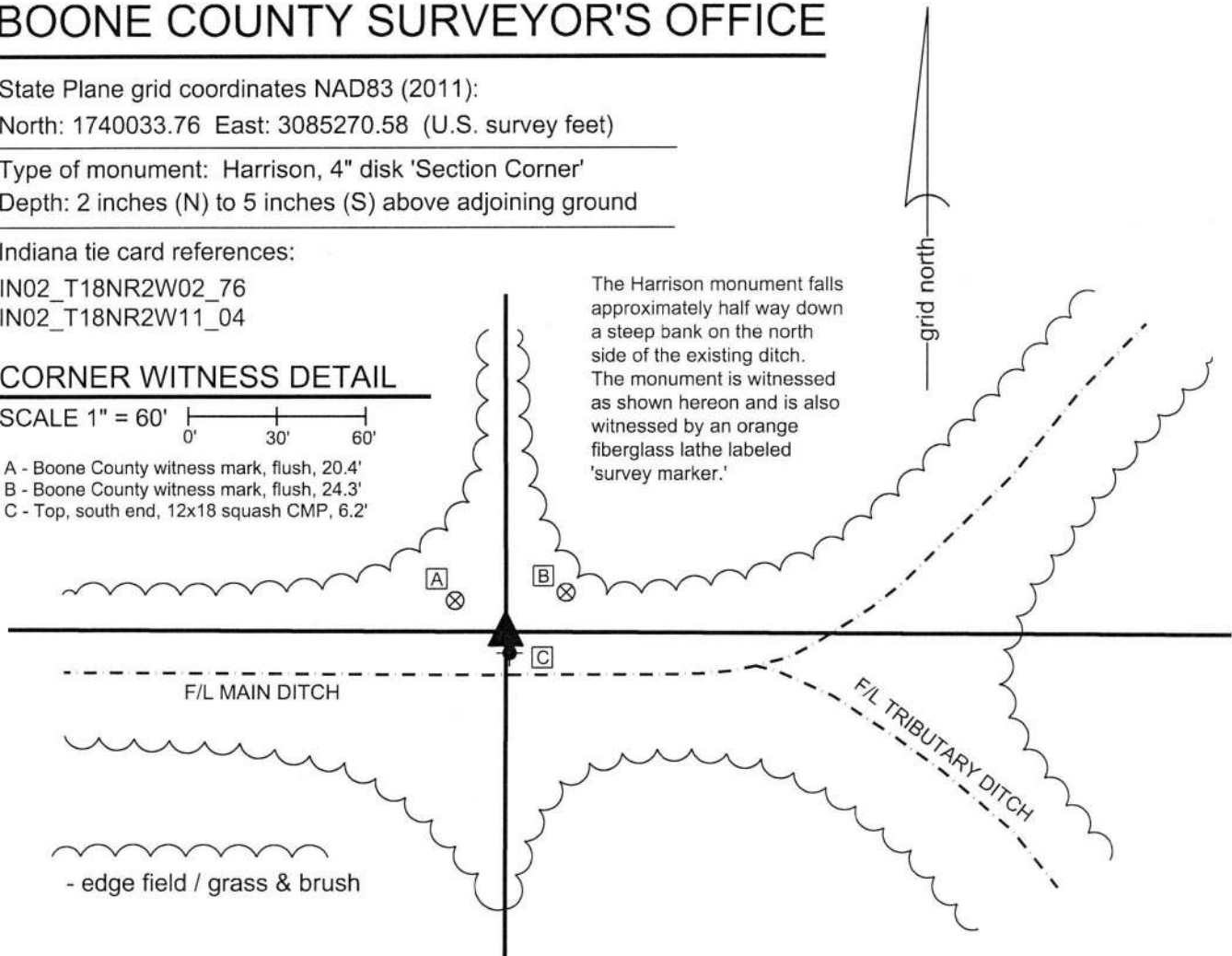
CORNER WITNESS DETAIL

SCALE 1" = 60'

0' 30' 60'

- A - Boone County witness mark, flush, 20.4'
- B - Boone County witness mark, flush, 24.3'
- C - Top, south end, 12x18 squash CMP, 6.2'

The Harrison monument falls approximately half way down a steep bank on the north side of the existing ditch. The monument is witnessed as shown hereon and is also witnessed by an orange fiberglass lathe labeled 'survey marker.'



The Harrison monument was set in a calculated position, one foot south of a rebar found.

A BCS record of January 21-22, 1873 states, with respect to this corner, "Reest. from stump of hickory. Set rock 13,11,8 + at corner."

No recent BCS tie cards were found referencing the corner. This corner is, however, shown on two plats of land to the east. The Farrow Minor Plat recorded in Plat Book 11, page 10 and the Taylor Minor Plat recorded in Plat Book 20, page 71, all as recorded in the Office of the Boone County Recorder, both show the corner. The Taylor Minor plat shows a rebar set at the corner. Both plats were certified by Jerry L. Carter, LS No. S0350. Based on the relative positions of monuments found at other corners and the dimensions shown on the plats, minimal uncertainty is associated with the position of the corner in the east-west dimensions but approximately two feet of uncertainty exists in the north-south dimension. No significant excavation was performed at this corner as it falls along a steep slope representing the north bank of an existing ditch/waterway. A rebar bearing the cap of Jerry L. Carter was found one foot north of the position of the corner computed with respect to the Taylor Minor Plat and approximately two feet north of the corner position computed with respect to the Farrow Minor Plat. The rebar did not appear to have been disturbed but was clearly not in the position shown on either plat. The position shown on the Taylor Minor Plat was held and the rebar was set at this position, as computed with respect to rebars shown on said plat as being found at the northeast corner of the northeast quarter of section 11 and set at the southwest corner of the north half of the northeast quarter. This position falls 1 foot south of the rebar found in the field and 0.9 foot north of the position shown on the Farrow Minor Plat. It is further noted that this position falls 0.2 foot west and 0.9 foot north of a computed midpoint of the line connecting the northeast and northwest corners of section 11. A Harrison monument was set at the computed position on October 29, 2019. The found rebar was removed during minor excavation.

This corner was originally established in 1820.



Kenneth E. Hedge
 Kenneth E. Hedge, County Surveyor

James S. Swift
 James S. Swift, IN LS 20200054
 December 18, 2019

Jefferson Township

Section 2
T18N, R2W

Section 11
T18N, R2W

SECTION CORNER RECORD

BOONE COUNTY SURVEYOR'S OFFICE

SW 100-800

State Plane grid coordinates NAD83 (2011):

North: 1740044.50 East: 3082616.91 (U.S. survey feet)

Type of monument: INDOT type B monument

Depth: flush with adjacent road surface

Indiana tie card references:

IN02_T18NR2W03_80 IN02_T18NR2W02_72

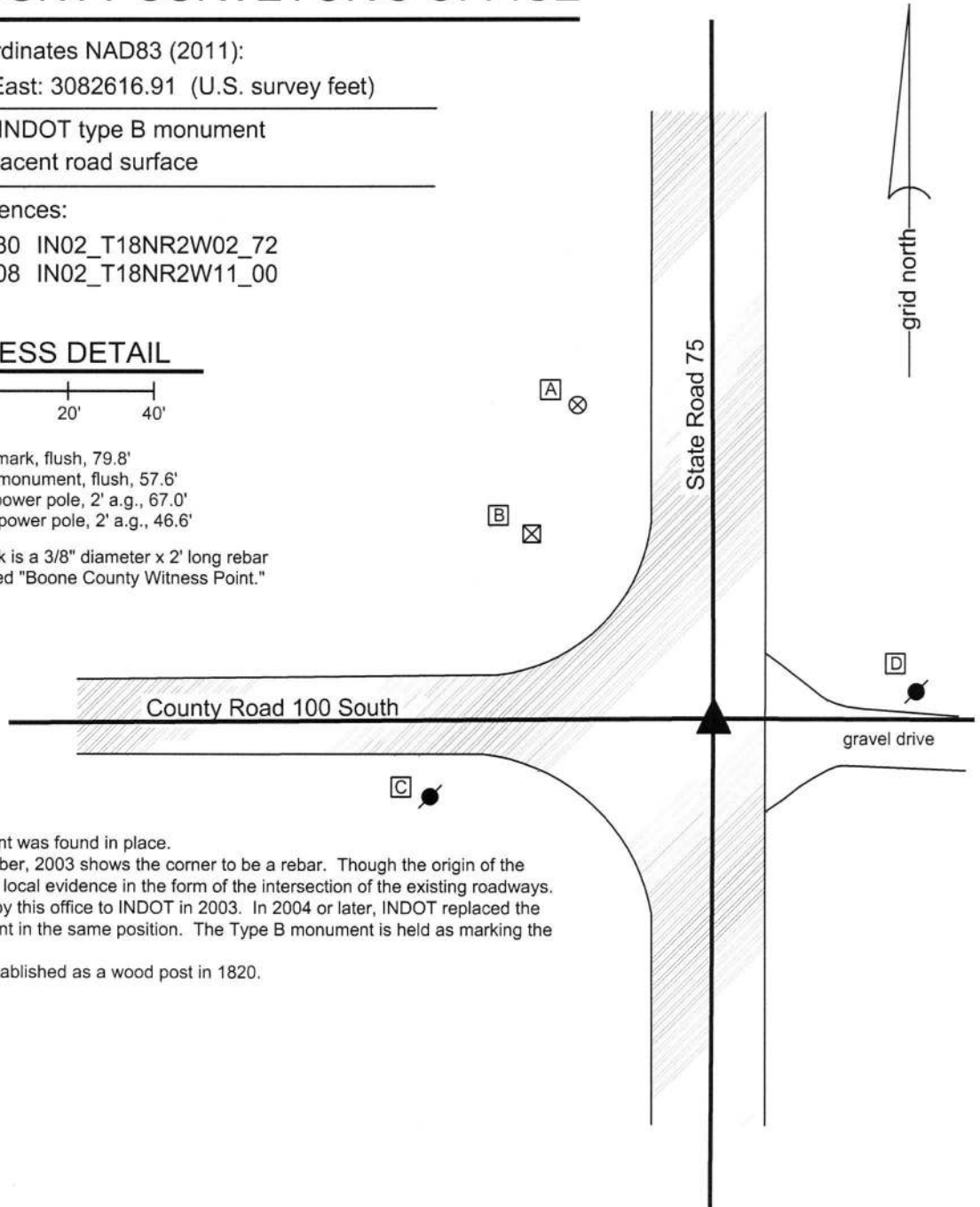
IN02_T18NR2W10_08 IN02_T18NR2W11_00

CORNER WITNESS DETAIL

SCALE 1" = 40'

- A - Boone County witness mark, flush, 79.8'
- B - SE corner, INDOT RW monument, flush, 57.6'
- C - Mag nail set in E. side power pole, 2' a.g., 67.0'
- D - Mag nail set in W. side power pole, 2' a.g., 46.6'

Boone County witness mark is a 3/8" diameter x 2' long rebar bearing a metal cap stamped "Boone County Witness Point."



The INDOT Type B monument was found in place. A BCS tie card dated December, 2003 shows the corner to be a rebar. Though the origin of the rebar is not known, it fits with local evidence in the form of the intersection of the existing roadways. This tie card was presented by this office to INDOT in 2003. In 2004 or later, INDOT replaced the rebar with a Type B monument in the same position. The Type B monument is held as marking the corner. This corner was originally established as a wood post in 1820.



Kenneth E. Hedge
Kenneth E. Hedge, County Surveyor

James S. Swift
James S. Swift, IN LS 20200054
March 23, 2017

Jefferson Township

| | |
|-------------------------|-------------------------|
| Section 3 T18N, R2W | Section 2 T18N, R2W |
| Section 10 T18N, R2W | Section 11 T18N, R2W |

SECTION CORNER RECORD

SW 150-700

BOONE COUNTY SURVEYOR'S OFFICE

State Plane grid coordinates NAD83 (2011):

North: 1737391.61 East: 3087949.58 (U.S. survey feet)

Type of monument: Harrison, 4" disk 'Section Corner'

Depth: Six inches below adjacent gravel road surface

Indiana tie card references:

IN02_T20NR2E15_80 IN02_T20NR2E14_72

CORNER WITNESS DETAIL

SCALE 1" = 40'

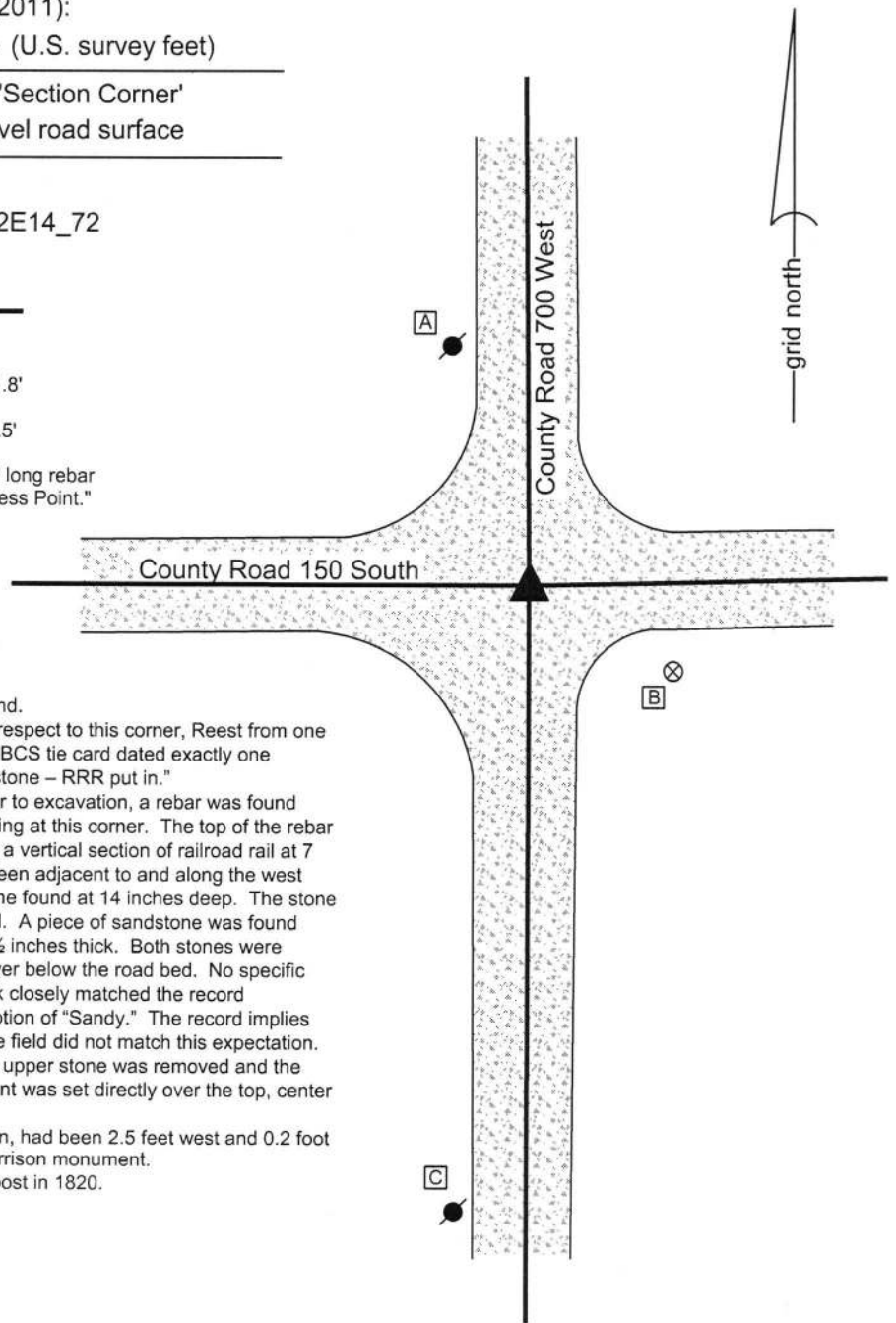


A - Mag nail set in S.E. side power pole, 2' a.g., 51.8'

B - Boone County witness mark, flush, 35.4'

C - Mag nail set in N. side power pole, 2' a.g., 131.5'

Boone County witness mark is a 3/8" diameter x 2' long rebar bearing a metal cap stamped "Boone County Witness Point."



The Harrison monument was set over a stone found.

A BCS record dated October 4, 1871 states, with respect to this corner, Reest from one tree and stump of other. Rock (sandy) 8x8x4." A BCS tie card dated exactly one hundred years later, October 4, 1971, states "No stone - RRR put in."

This corner was excavated on July 14, 2016. Prior to excavation, a rebar was found flush with the surface of the gravel roads intersecting at this corner. The top of the rebar was bent towards the south. Excavation revealed a vertical section of railroad rail at 7 inches deep. The vertical shaft of the rebar had been adjacent to and along the west side of the rail. Further excavation revealed a stone found at 14 inches deep. The stone was 8 inches N-S by 8 inches E-W by 5 inches tall. A piece of sandstone was found below, being 7 inches E-W by 5 inches N-S by 2 1/2 inches thick. Both stones were horizontal, as found, and embedded in the clay layer below the road bed. No specific marks were found on either stone. The upper rock closely matched the record description, while the lower stone matched description of "Sandy." The record implies that the 8x8x4 rock was sandy. The findings in the field did not match this expectation. The stones were held as marking the corner. The upper stone was removed and the lower stone was left in place. A Harrison monument was set directly over the top, center of the lower stone.

The rebar and rail, both removed during excavation, had been 2.5 feet west and 0.2 foot north of the position marked by the stones and Harrison monument.

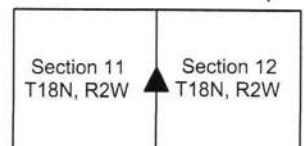
This corner was originally established as a wood post in 1820.



Kenneth E. Hedge
 Kenneth E. Hedge, County Surveyor

James S. Swift
 James S. Swift, IN LS 20200054
 March 23, 2017

Jefferson Township



PHOTOGRAPHIC DOCUMENTATION

Date of photography: July 14, 2016

The upper stone as it was originally exposed.



The upper stone removed from the road bed and the lower stone embedded in the road bed.



View from the east, looking across both stones (upper stone displaced from original position) and west along County Road 150 South.



For details and documentation, refer to related sheet "Section Corner Record."

SECTION CORNER RECORD

SW 150-800

BOONE COUNTY SURVEYOR'S OFFICE

State Plane grid coordinates NAD83 (2011):

North: 1737399.58 East: 3082601.26 (U.S. survey feet)

Type of monument: INDOT Type B

Depth: flush

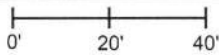
Indiana tie card references:

IN02_T18NR2W10_44 IN02_T18NR2W11_36



CORNER WITNESS DETAIL

SCALE 1" = 40'



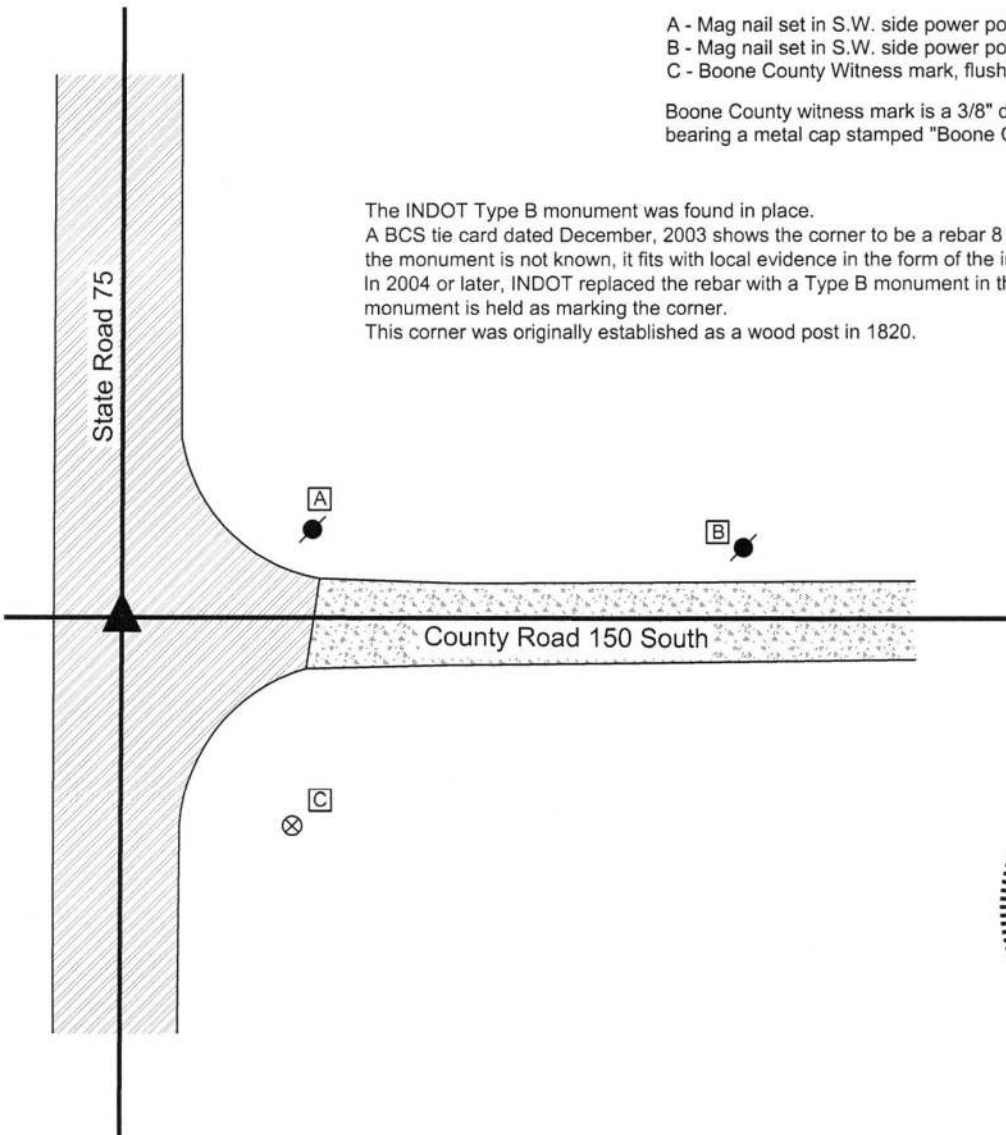
- A - Mag nail set in S.W. side power pole, 42.4'
- B - Mag nail set in S.W. side power pole, 129.4'
- C - Boone County Witness mark, flush, 56.6'

Boone County witness mark is a 3/8" diameter x 2' long rebar bearing a metal cap stamped "Boone County Witness Point."

The INDOT Type B monument was found in place.

A BCS tie card dated December, 2003 shows the corner to be a rebar 8 inches deep. Though the origin of the monument is not known, it fits with local evidence in the form of the intersection of the existing roadways. In 2004 or later, INDOT replaced the rebar with a Type B monument in the same position. The Type B monument is held as marking the corner.

This corner was originally established as a wood post in 1820.



Jefferson Township

| | |
|-------------------------|-------------------------|
| Section 10 T18N, R2W | Section 11 T18N, R2W |
|-------------------------|-------------------------|

James S. Swift
James S. Swift, IN LS 20200054
Kenneth E. Hedge
Kenneth E. Hedge, County Surveyor

March 23, 2017

SECTION CORNER RECORD

SW 200-800

BOONE COUNTY SURVEYOR'S OFFICE

State Plane grid coordinates NAD83 (2011):

North: 1734755.69 East: 3082584.84 (U.S. survey feet)

Type of monument: INDOT Type B monument

Depth: Flush

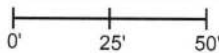
Indiana tie card references:

IN02_T18NR2W10_80 IN02_T18NR2W11_72

IN02_T18NR2W15_08 IN02_T18NR2W14_00

CORNER WITNESS DETAIL

SCALE 1" = 50'



A - Boone County witness mark, flush, 52.3'

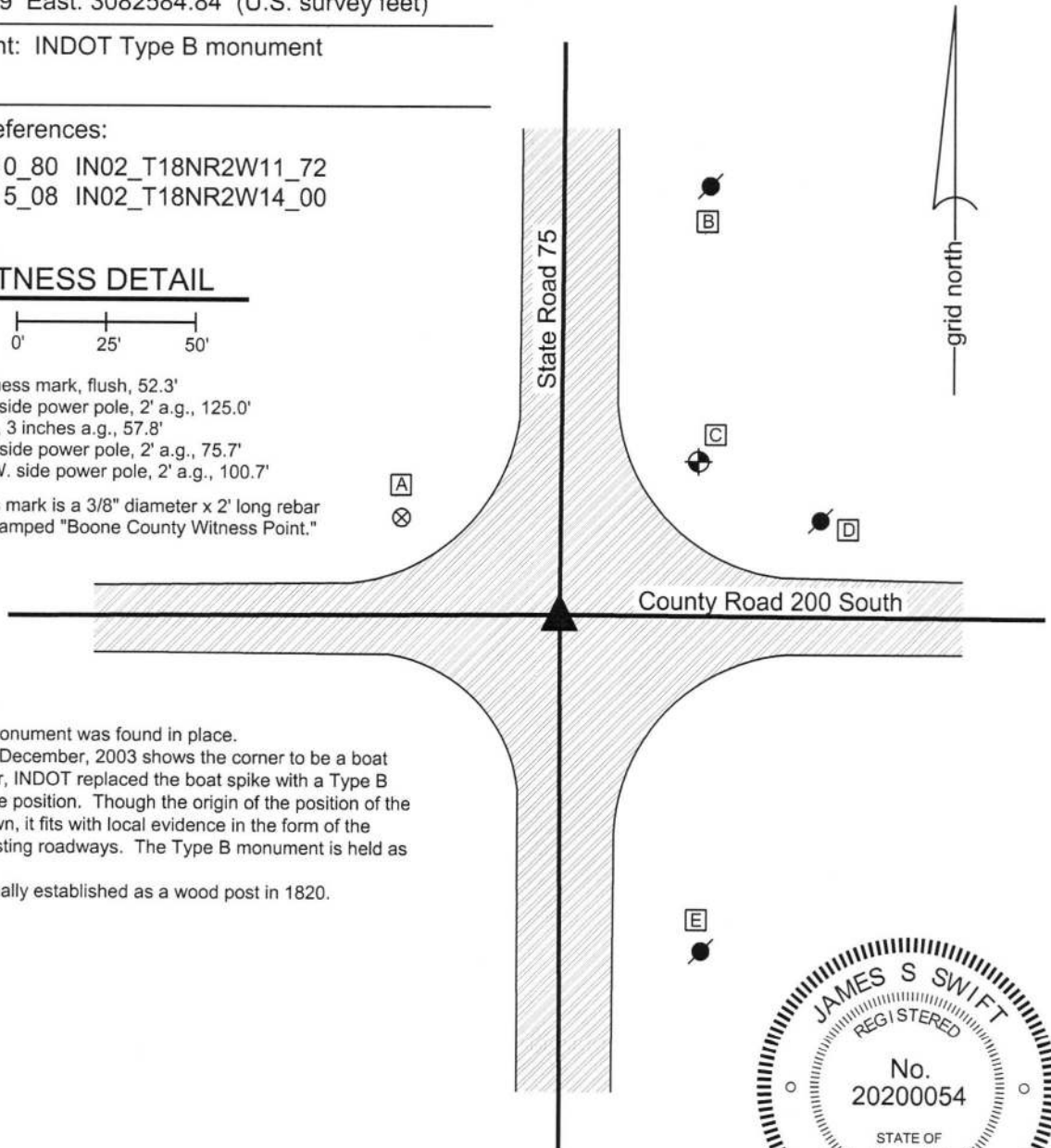
B - Mag nail set in W. side power pole, 2' a.g., 125.0'

C - USGS benchmark, 3 inches a.g., 57.8'

D - Mag nail set in W. side power pole, 2' a.g., 75.7'

E - Mag nail set in N.W. side power pole, 2' a.g., 100.7'

Boone County witness mark is a 3/8" diameter x 2' long rebar bearing a metal cap stamped "Boone County Witness Point."



The INDOT Type B monument was found in place.

A BCS tie card dated December, 2003 shows the corner to be a boat spike. In 2004 or later, INDOT replaced the boat spike with a Type B monument in the same position. Though the origin of the position of the monument is not known, it fits with local evidence in the form of the intersection of the existing roadways. The Type B monument is held as marking the corner.

This corner was originally established as a wood post in 1820.



Kenneth E. Hedge
Kenneth E. Hedge, County Surveyor

James S. Swift
James S. Swift, IN LS 20200054
March 23, 2017

Jefferson Township

Section 10
T18N, R2W

Section 11
T18N, R2W

Jackson Township

Section 15
T18N, R2W

Section 14
T18N, R2W