

# SECTION CORNER RECORD

SW 100-100

## BOONE COUNTY SURVEYOR'S OFFICE

State Plane grid coordinates NAD83 (NSRS 2007):

North: 1740184.01 East: 3119513.14 (U.S. survey feet)

Type of monument: Harrison, 4" disk 'Section Corner'

Depth: One inch above adjacent ground

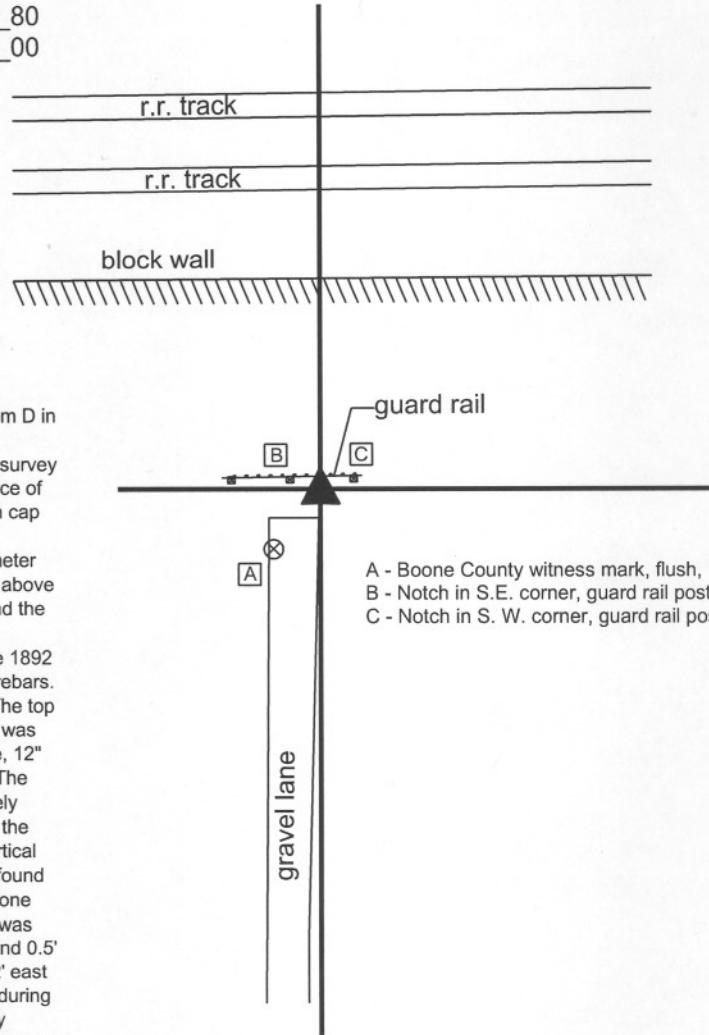
Indiana tie card references:

IN02\_T18NR1W01\_72      IN02\_T18NR1W02\_80

IN02\_T18NR1W11\_08      IN02\_T18NR1W12\_00

### CORNER WITNESS DETAIL

SCALE 1" = 40'



A BCS record dated January 18, 1892 states "Reestablished by running intersecting lines at a pt 25 links East of a straight line from D in this Section to D in Section 11. Set Rock + 22.17.12 at corner."

Preliminary surveys for the Lebanon Business Park, including a survey by Woolpert, Inc. recorded in Survey Book 2, page 14 in the Office of the Boone County Recorder, show the corner as an iron pin with cap found.

Investigation and excavation of this corner yielded two 5/8" diameter rebars and the record stone found. The two rebars were visible above the surface prior to excavation. One bore the cap "Woolpert" and the other bore a cap, the markings on which were not identifiable.

Excavation on August 4, 2010 yielded the stone described in the 1892 record found adjacent to and slightly south and west of the two rebars. The stone was found at 9 inches below the top of the ground. The top of the stone appears to have been chipped off and the "+" mark was not found. The stone measures 21" tall on the vertical west side, 12" E-W at the widest point and 19 inches N-S at the widest point. The stone is approximately triangular in shape and difficult to precisely measure. Given the similarity of the measured dimensions with the record dimensions and the characteristics of the stone being vertical with a distinct high point, fitting with the characteristics of other found stones which were set by County Surveyors in the 1800s, the stone was accepted as being the record stone described in 1892 and was held as marking the corner. The Woolpert rebar was 0.2' east and 0.5' north of the top high point of the stone. The other rebar was 0.2' east and 0.2' north of the top high point. Both rebars were removed during excavation. The Harrison monument was set in concrete directly above the top high point of the stone, with the top 5 inches of the stone encased in concrete.

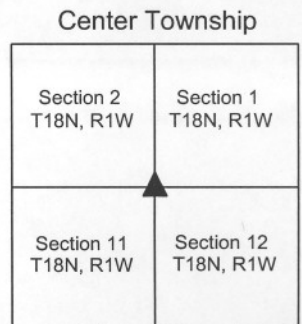
This corner was originally established as a wood post in 1820.

- A - Boone County witness mark, flush, 15.9'
- B - Notch in S.E. corner, guard rail post, 6.3'
- C - Notch in S.W. corner, guard rail post, 6.7'



*Kenneth E. Hedge*  
 \_\_\_\_\_  
 Kenneth E. Hedge, County Surveyor

*James S. Swift*  
 \_\_\_\_\_  
 James S. Swift, IN LS 20200054  
 September 22, 2011



PHOTOGRAPHIC DOCUMENTATION

Date of photography: August 4, 2010

The stone and two rebars. View from the east.



The stone and two rebars. View from the south.



For details and documentation, refer to related sheet "Section Corner Record."

# SECTION CORNER RECORD

## BOONE COUNTY SURVEYOR'S OFFICE

SW 150-200

State Plane grid coordinates NAD83 (2011):

North: 1737536.06 East: 3114216.16 (U.S. survey feet)

Type of monument: 5/8 inch rebar with metal cap

Depth: 10 inches below adjoining tilled ground

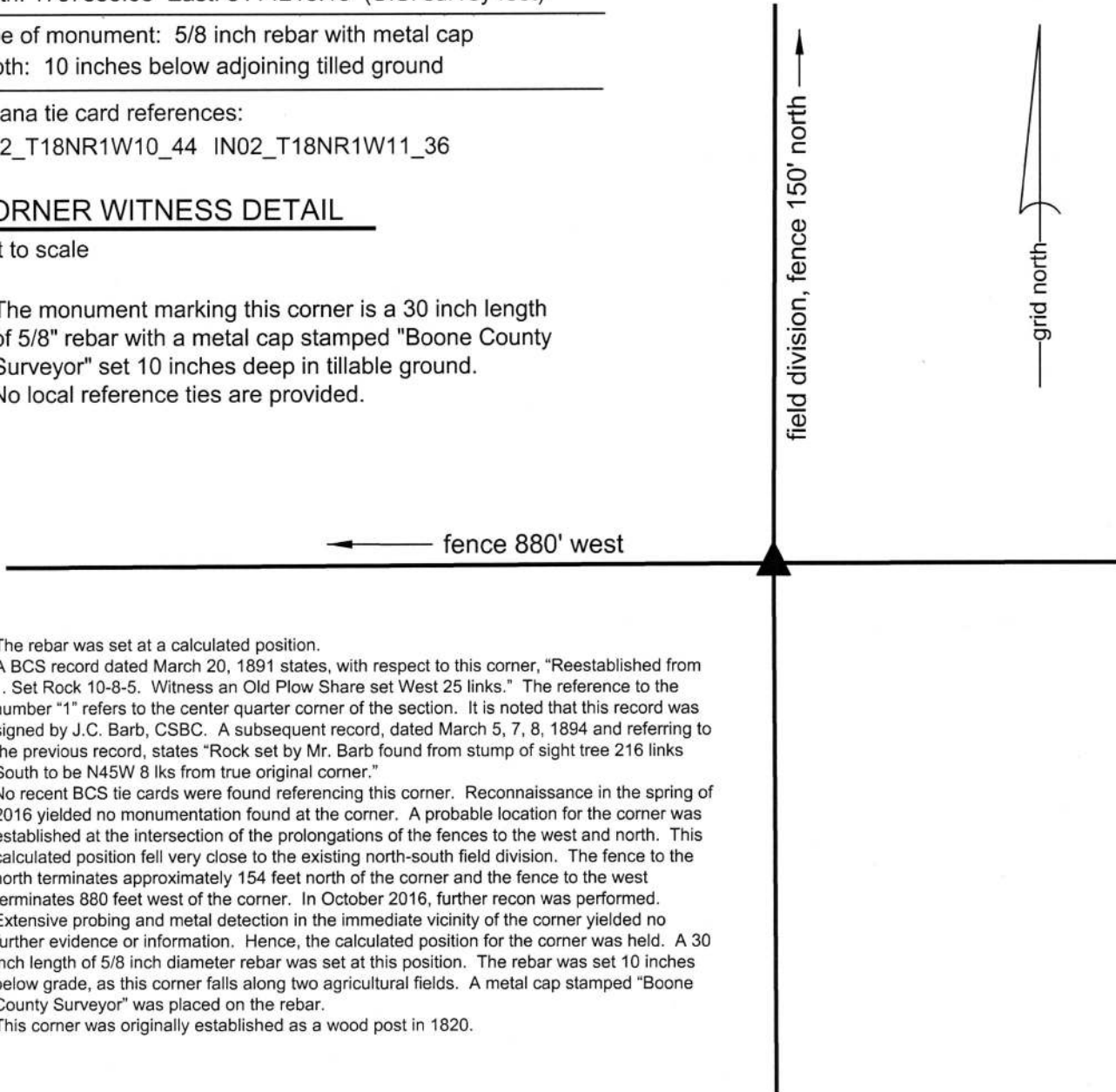
Indiana tie card references:

IN02\_T18NR1W10\_44 IN02\_T18NR1W11\_36

### CORNER WITNESS DETAIL

Not to scale

The monument marking this corner is a 30 inch length of 5/8" rebar with a metal cap stamped "Boone County Surveyor" set 10 inches deep in tillable ground. No local reference ties are provided.

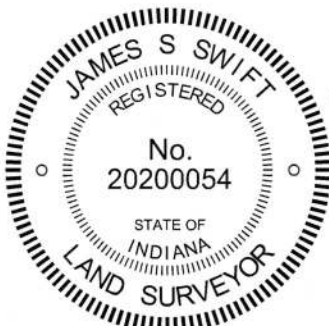


The rebar was set at a calculated position.


A BCS record dated March 20, 1891 states, with respect to this corner, "Reestablished from 1. Set Rock 10-8-5. Witness an Old Plow Share set West 25 links." The reference to the number "1" refers to the center quarter corner of the section. It is noted that this record was signed by J.C. Barb, CSBC. A subsequent record, dated March 5, 7, 8, 1894 and referring to the previous record, states "Rock set by Mr. Barb found from stump of sight tree 216 links South to be N45W 8 lks from true original corner."

No recent BCS tie cards were found referencing this corner. Reconnaissance in the spring of 2016 yielded no monumentation found at the corner. A probable location for the corner was established at the intersection of the prolongations of the fences to the west and north. This calculated position fell very close to the existing north-south field division. The fence to the north terminates approximately 154 feet north of the corner and the fence to the west terminates 880 feet west of the corner. In October 2016, further recon was performed. Extensive probing and metal detection in the immediate vicinity of the corner yielded no further evidence or information. Hence, the calculated position for the corner was held. A 30 inch length of 5/8 inch diameter rebar was set at this position. The rebar was set 10 inches below grade, as this corner falls along two agricultural fields. A metal cap stamped "Boone County Surveyor" was placed on the rebar.

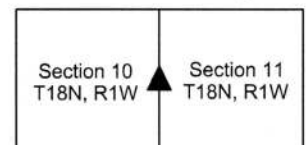
This corner was originally established as a wood post in 1820.



  
Kenneth E. Hedge, County Surveyor

  
James S. Swift, IN LS 20200054  
March 23, 2017

Center Township



# SECTION CORNER RECORD

SW 150-100

## BOONE COUNTY SURVEYOR'S OFFICE

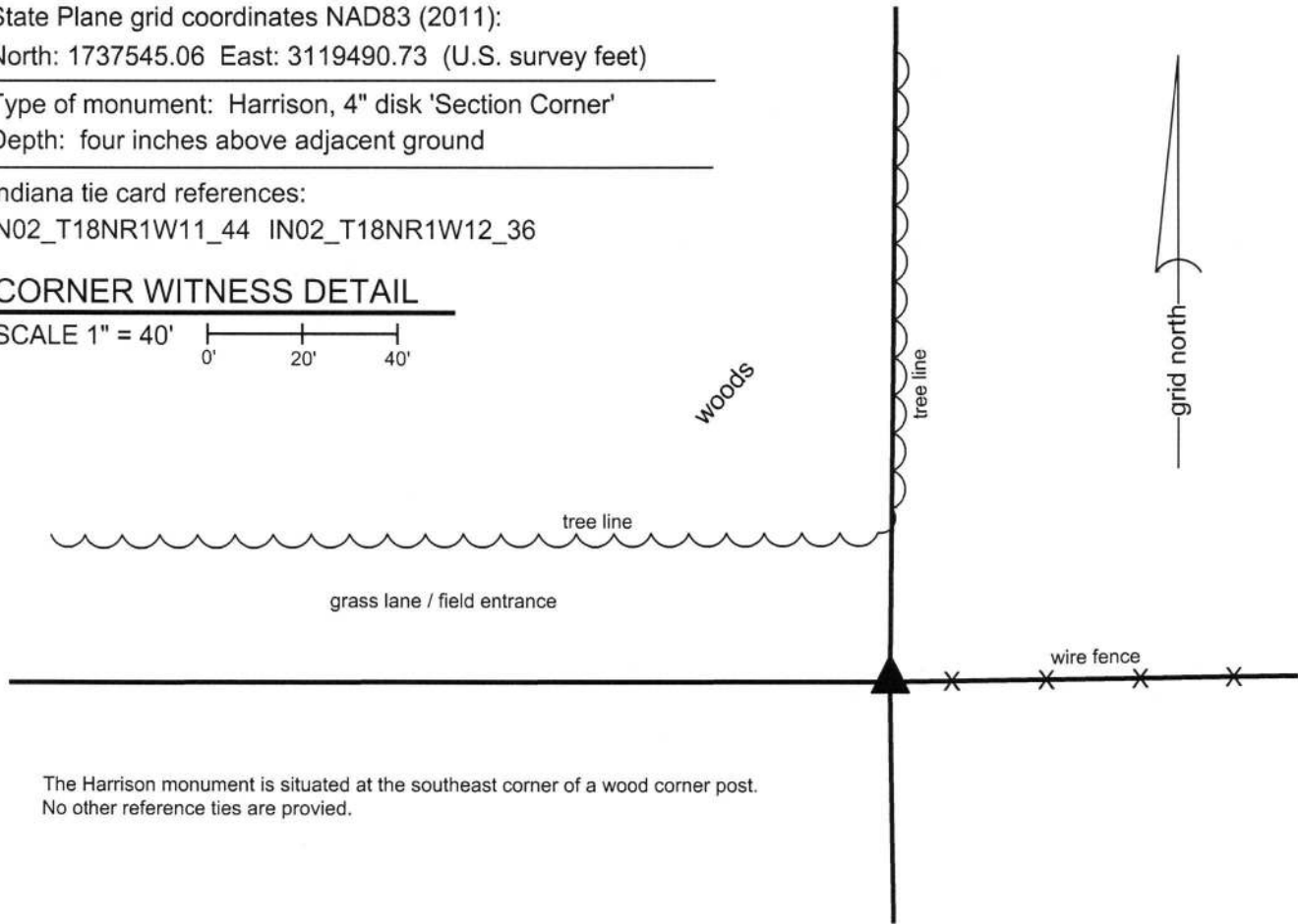
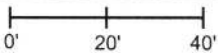
State Plane grid coordinates NAD83 (2011):  
North: 1737545.06 East: 3119490.73 (U.S. survey feet)

Type of monument: Harrison, 4" disk 'Section Corner'  
Depth: four inches above adjacent ground

Indiana tie card references:  
IN02\_T18NR1W11\_44 IN02\_T18NR1W12\_36

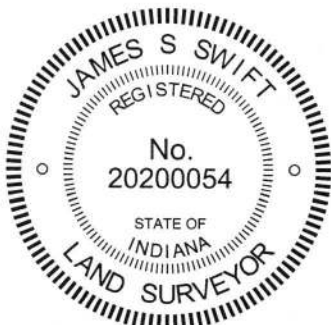
### CORNER WITNESS DETAIL

SCALE 1" = 40'




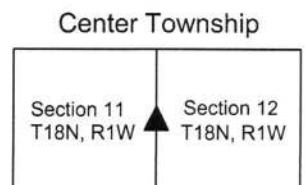
The Harrison monument is situated at the southeast corner of a wood corner post.  
No other reference ties are provided.

The Harrison monument was set in place of a stone found.  
A BCS record dated April 24, 1869 states, with respect to this corner, "Reest from trees. Rock 13,12,8 +." No BCS tie cards were found referencing this corner.  
A stone was found at this corner during recon in October, 2016. Full excavation was performed on October 14, 2016. The stone was situated five inches below grade at the southeast corner of an ancient wood corner post. As found, the stone was 13 inches tall by 8 inches E-W by 12 inches N-S. The stone had a flat top with no discernable marks, as found. The stone was removed and a distinct etched "+" mark was found on the bottom of the stone. It appeared in the field that the stone was upside-down from the orientation in which it would have been likely set. Typically the mark on a stone is found either on the top or side, rarely on the bottom. It is possible that the stone was previously disturbed and reset with the mark to the bottom, which would indicate that the stone may not be in its original position. This is not known as a fact. The stone was held as marking the corner. The center of the top of the rock, as originally found, was held as the specific location of the corner. A Harrison monument was set at this position. This corner was originally established as a wood post in 1820.



  
Kenneth E. Hedge, County Surveyor

  
James S. Swift, IN LS 20200054  
March 23, 2017



PHOTOGRAPHIC DOCUMENTATION

Date of photography: October 14, 2016

The stone as found at the base of the post.



The wood post with the stone exposed at the base.



For details and documentation, refer to related sheet "Section Corner Record."

The stone removed from the ground, situated in same orientation as originally found.



The stone with etched "+" mark on top. As found this mark was on the bottom of the stone.



The stone with mark on top shown adjacent to the Harrison monument set in its place.



# SECTION CORNER RECORD

# SW 100-150

## BOONE COUNTY SURVEYOR'S OFFICE

State Plane grid coordinates NAD83 (2011):  
North: 1740179.28 East: 3116865.43 (U.S. survey feet)

Type of monument: Harrison, 4" disk 'Section Corner'  
Depth: Flush with adjacent ground

Indiana tie card references:  
IN02\_T18NR1W02\_76 IN02\_T18NR1W11\_04

### CORNER WITNESS DETAIL

SCALE 1" = 100'  
0' 50' 100'

The Harrison monument was set in place of a rebar found. A BCS record of June, 1836 calls this corner "Stone in a field." A BCS record of January 18, 1892 states, with respect to this corner, "Reestablished corner. Set Rock + 15.12.10 at corner." No recent BCS tie cards were found referencing this corner.

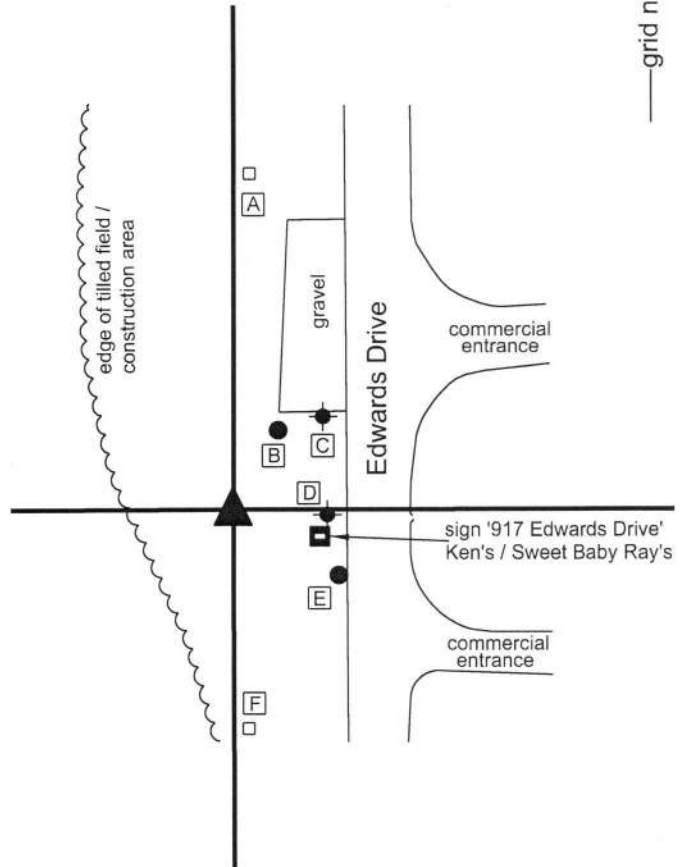
The corner is shown as a wood post on preliminary surveys by Woolpert for the Lebanon Business Park, including a survey recorded at Survey Book 2, page 10 in the Office of the Boone County Recorder.

The corner is shown on a survey by Northpointe Engineering and Surveying, Inc. recorded at Survey Book 16, page 91-92, position computed from the Woolpert surveys. A survey by Banning Engineering recorded at Survey Book 17, page 35 holds a rebar with Northpointe cap as marking the corner.

This corner was excavated on May 24, 2018. Prior to excavation, a rebar with plastic cap stamped "NPES 20100076" was found, per the survey recorded at SB 16, pp. 91-92. In September, 2017, the rebar was found in good condition and the position of the rebar fit reasonably well with a previously computed position for the corner, based on the Woolpert surveys. By Spring, 2018, the rebar had been disturbed and was found with the shaft generally vertical but bent at the top.

Excavation around the rebar revealed remnants of the base of a cedar post found at 10 inches below grade. It is noted that this area appears to have been disturbed substantially due to construction activities associated with the Lebanon Business Park. The top soil has largely been removed and the clay layer which is typically found below the top soil was found to be at ground level, indicating that the construction activities have included removal of some dirt. No stones or additional evidence of the corner were found. It is likely that a stone, if present, would have been removed as part of the construction activities. The rebar had been situated along the north edge of the fragments of the post. The rebar was held as marking the corner and was replaced in the same position as the vertical section of the rebar, coincident with the north edge of the base of the cedar post. It is noted that the Harrison monument was set flush with the existing grade, but may be raised at a later date to match final grade if necessary.

This corner was originally established as a wood post in 1820.



- A - SW cor, base, electric transformer A22-27, flush, 171.4'
- B - Chisel mark on N. Edge, T.C., sanitary manhole, 51.4'
- C - West edge, steel standpipe, flush, 50.7'
- D - West edge, steel standpipe, flush, 47.6'
- E - Chisel mark on N. Edge, T.C., sanitary manhole, 61.6'
- F - NW cor, base, electric transformer A22-28, flush, 110.3'



*Kenneth E. Hedge*  
Kenneth E. Hedge, County Surveyor

*James S. Swift*  
James S. Swift, IN LS 20200054  
June 6, 2018

