

SECTION CORNER RECORD

SE 700-1000

BOONE COUNTY SURVEYOR'S OFFICE

State Plane grid coordinates NAD83 (NSRS 2007):

North: 1709561.12 East: 3178346.78 (U.S. survey feet)

Type of monument: Harrison, 4" disk 'Section Corner'

Depth: One inch below adjacent road surface

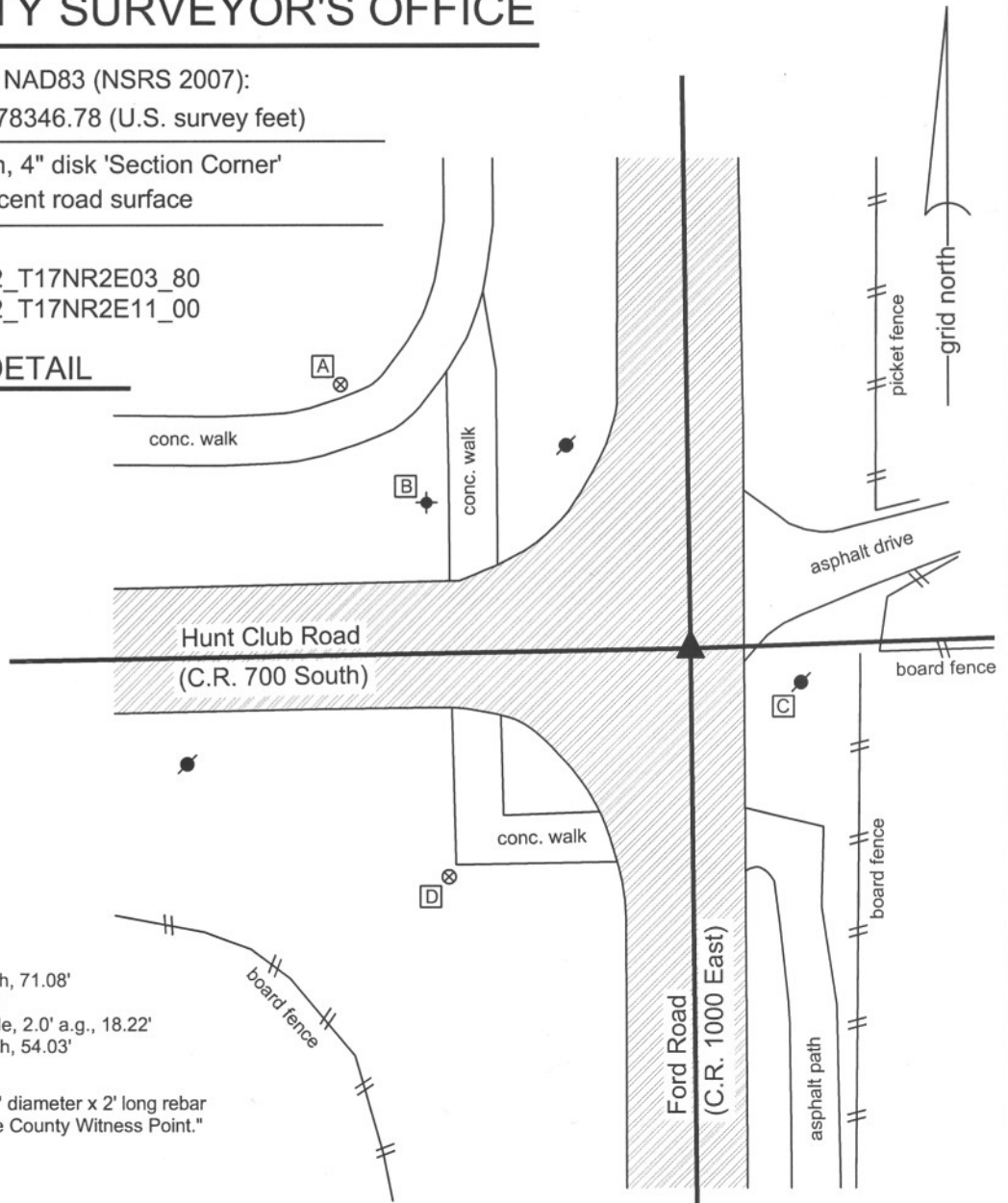
Indiana tie card references:

IN02_T17NR2E02_72 IN02_T17NR2E03_80

IN02_T17NR2E10_08 IN02_T17NR2E11_00

CORNER WITNESS DETAIL

SCALE 1" = 30'



- A - Boone County witness mark, flush, 71.08'
- B - Top SSE bolt, fire hydrant, 48.81'
- C - Mag nail set in W. side power pole, 2.0' a.g., 18.22'
- D - Boone County witness mark, flush, 54.03'

Boone County witness mark is a 3/8" diameter x 2' long rebar bearing a metal cap stamped "Boone County Witness Point."

The harrison monument was set over a railroad rail found and in place of a mag nail found and railroad spike found. No old BCS stone records were found for this corner. A BCS tie card of August 17, 1971 states "found 3' iron pipe, put in RRR." Most recorded surveys and the adjoining and proximate subdivision plats call for a railroad spike found. Some surveys reference a rebar found. Prior to excavation the visible monument was a mag nail at the surface. Excavation revealed the railroad spike, rebar and railroad rail. The railroad spike was found 8 inches deep, below the mag nail, 0.1 foot north and 0.1 foot east of the nail. The railroad rail was found at 14 inches deep, directly below the railroad spike. A 7 inch long rebar was also found, but was disturbed and its position was not firmly established. No other monuments were found in a 3 foot N-S by 3 foot E-W area centered on the mag nail. The railroad rail was left in place and a harrison monument was set directly over the rail in the position of the railroad spike. This corner was originally established as a wood post in late June or early July, 1821.



Kenneth E. Hedge
 Kenneth E. Hedge, County Surveyor

James S. Swift
 James S. Swift, IN LS 20200054

March 11, 2009

Eagle Township

Section 3 T17N, R2E	Section 2 T17N, R2E
Section 10 T17N, R2E	Section 11 T17N, R2E

SECTION CORNER RECORD

SE 700-1100

BOONE COUNTY SURVEYOR'S OFFICE

State Plane grid coordinates NAD83 (NSRS 2007):

North: 1709788.43 East: 3183649.59 (U.S. survey feet)

Type of monument: Harrison, 4" disk 'Section Corner'

Depth: One inch below adjacent road surface

Indiana tie card references:

IN02_T17NR2E01_72 IN02_T17NR2E02_80

IN02_T17NR2E11_08 IN02_T17NR2E12_00

CORNER WITNESS DETAIL

SCALE 1" = 50'



The harrison monument was set in place of a railroad spike found.

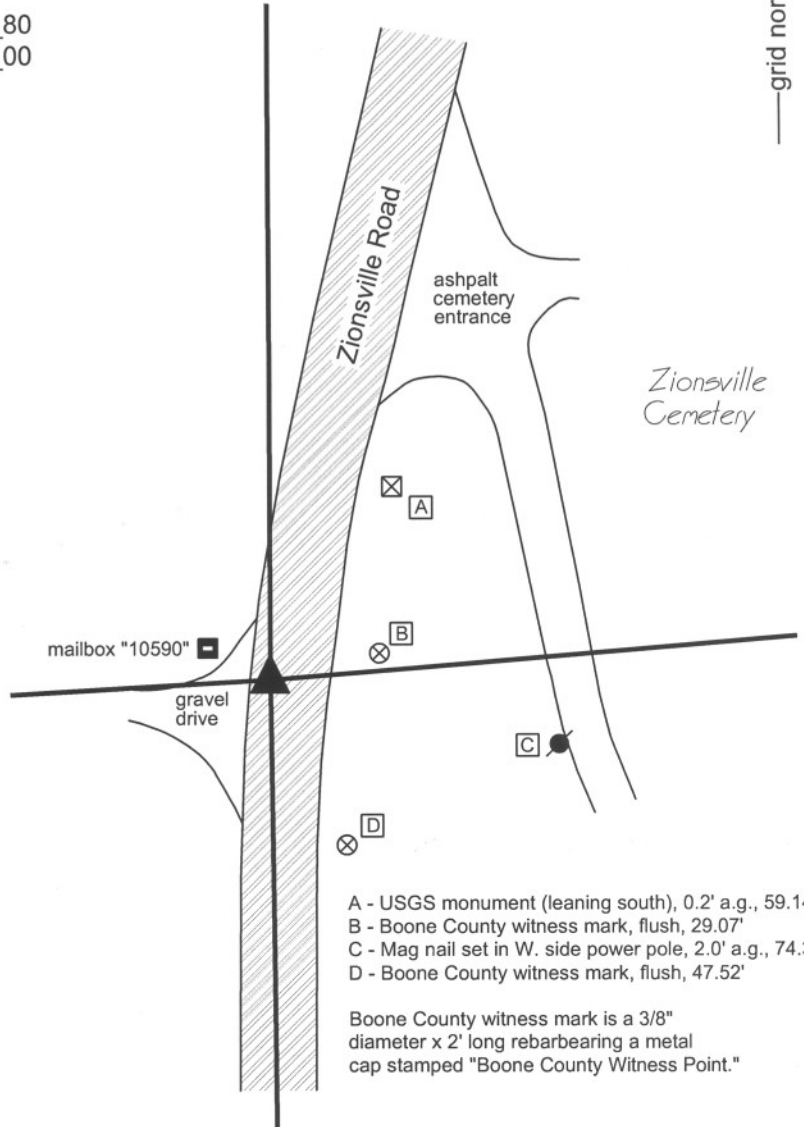
A BCS record of October 18, 1865 states "A Rock tree gone." A BCS record of December 31, 1879 states "Reest. fr. Taylors first tree ... Set Rock 14.13.10 +." The tree reference is to a BCS record of November 14, 1855 which shows the corner witnessed by two Beech trees, but which makes no mention of what monument may have been set or found. A BCS tie card of April 2, 1969 states "no stone, set yellow plate." A BCS tie card of December 9, 1994 shows the corner as a railroad spike with no documentation of source.

This corner was excavated on July 31, 2009. Prior to excavation a railroad spike was visible in 3 inches deep in a hole in the asphalt. Excavation revealed a copperweld found at 10 inches deep, below the railroad spike.

Excavation also revealed a layer of concrete at 10 inches deep. The top of the copperweld was even with the top of the concrete. The concrete layer was under the entire 4 feet by 4 feet area of excavation. Further excavation was not performed as the presence of the concrete indicates the high likelihood of previous grading in preparation for the pouring of the concrete.

The railroad spike is shown as the corner on all recorded private surveys. The spike and copperweld were held as marking the corner. The harrison monument was set in place of the railroad spike and over the copperweld, which was left in place.

This corner was originally established as a wood post in late June or early July, 1821.



- A - USGS monument (leaning south), 0.2' a.g., 59.14'
- B - Boone County witness mark, flush, 29.07'
- C - Mag nail set in W. side power pole, 2.0' a.g., 74.3'
- D - Boone County witness mark, flush, 47.52'

Boone County witness mark is a 3/8" diameter x 2' long rebarbearing a metal cap stamped "Boone County Witness Point."



Kenneth E. Hedge
 Kenneth E. Hedge, County Surveyor

James S. Swift

James S. Swift, IN LS 20200054

July 14, 2010

Eagle Township

Section 2 T17N, R2E	Section 1 T17N, R2E
Section 11 T17N, R2E	Section 12 T17N, R2E

SECTION CORNER RECORD

SE 750-1000

BOONE COUNTY SURVEYOR'S OFFICE

State Plane grid coordinates NAD83 (NSRS 2007):

North: 1706927.85 East: 3178373.58 (U.S. survey feet)

Type of monument: Harrison, 4" disk 'Section Corner'

Depth: 1/2 inch below adjacent road surface

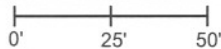
Indiana tie card references:

IN02_T17NR2E10_44

IN02_T17NR2E11_36

CORNER WITNESS DETAIL

SCALE 1" = 50'



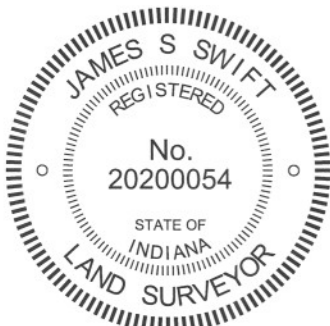
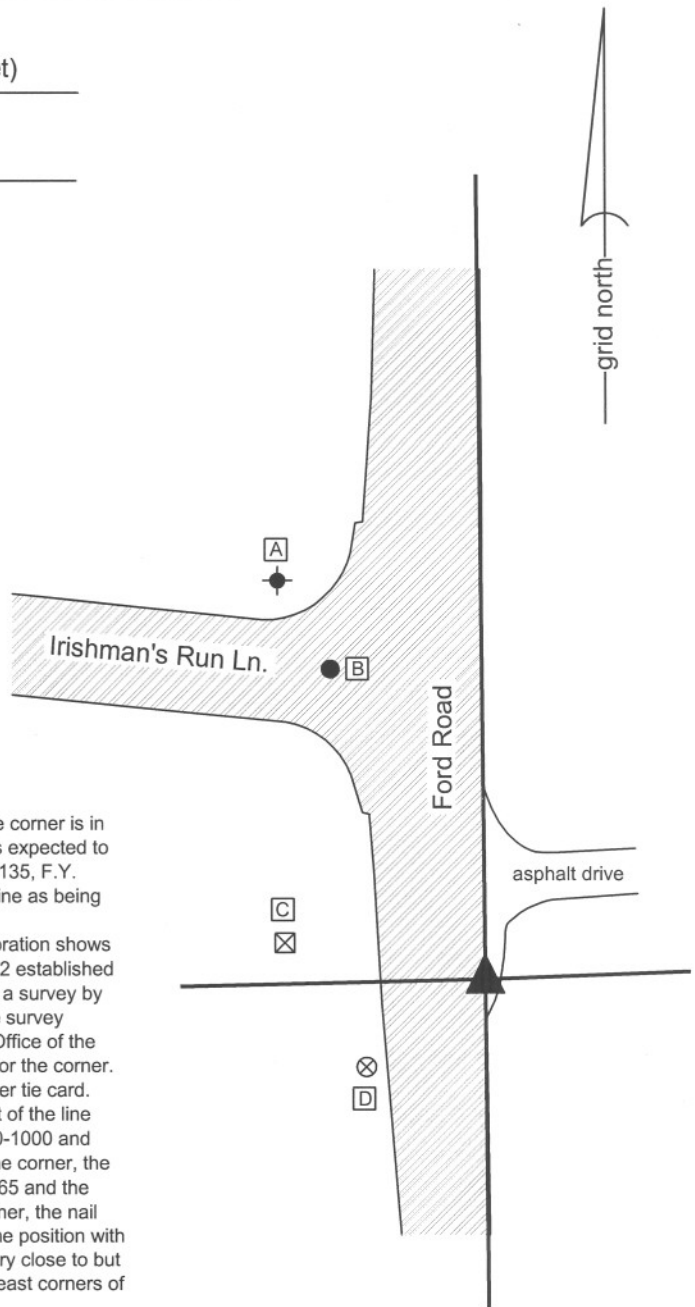
- A - Top, S.S.E. bolt, fire hydrant, 115.05'
- B - Iron pin, INDOT "control marker", flush, 25.00'
- C - Concrete nail fnd. in top, INDOT R/W marker, 52.98'
- D - Boone County witness marker, flush, 38.55'

Boone County witness mark is a 3/8" diameter x 2' long rebar bearing a metal cap stamped "Boone County Witness Point."

The harrison monument was set in place of a P.K. Nail found.

This corner falls in the approach to an overpass over Interstate I-865. The corner is in an area of a substantial amount of fill material and no ancient evidence was expected to be found. The plans for I-865, called then I-465, see project I-465-4 (124) 135, F.Y. 1965, sheet 18 of 325, do not show the corner. They do show the section line as being generally along the east side of Ford Road.

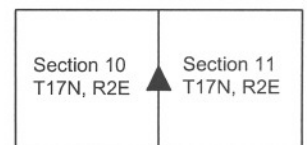
A tie card on file in this office provided by the Schneider Engineering Corporation shows the corner as "set conc nail" with the explanation "E 1/4 cor. Sec. 10-17N-02 established on line and half-way between NE and SE corners of the section. Based on a survey by Carl Anderson. By Schneider Engineering Corp. Job No. 01-88-233." The survey referenced by the job number is recorded in Survey Book 1, page 3 in the Office of the Boone County Recorder. Subsequent recorded surveys hold this position for the corner. A P.K. nail was found which fit with the distance ties shown on the Schneider tie card. The position of the P.K. nail is within 0.1 of a foot of the calculated midpoint of the line connecting the northeast and southeast corners of the section (See SE-700-1000 and SE-800-1000). Given the lack of availability of specific, local evidence of the corner, the lack of specific information for the location of the corner on the plans for I-865 and the general acceptance of the conc. nail, P.K. nail or calculated split as the corner, the nail was held as marking the corner. The physical nail was replaced in the same position with a harrison monument on May 31, 2011. As noted above, this position is very close to but not precisely at the midpoint of the line connecting the northeast and southeast corners of the section.



Kenneth E. Hedge
Kenneth E. Hedge, County Surveyor

James S. Swift
James S. Swift, IN LS 20200054
March 30, 2011

Eagle Township



SECTION CORNER RECORD

SE 750-1100

BOONE COUNTY SURVEYOR'S OFFICE

State Plane grid coordinates NAD83 (NSRS 2007):

North: 1707122.48 East: 3183681.64 (U.S. survey feet)

Type of monument: Harrison, 4" disk 'Section Corner'

Depth: One inch below adjacent road surface

Indiana tie card references:

IN02_T17NR2E11_44

IN02_T17NR2E12_36

- A - S.E. corner, ground level, steel I-beam post for mailbox "10150 Zionsville Road"
- B - Chiseled "X" found on top, steel guard rail post, 33.84'
- C - Chiseled "X" found on top, steel guard rail post, 24.20'
- D - Chiseled "X" found on top, steel guard rail post, 17.75'
- E - Chiseled "X" found on top, steel guard rail post, 19.19'

The harrison monument was set in place of a mag nail found.

A BCS tie card dated September 30, 1968 calls the corner a "yellow plate in concrete below blacktop." A BCS tie card dated July 1, 1993, based on information supplied by the Indiana Department of Transportation, states the following with respect to the corner: "Fnd P.K.N at road surface. County ties destroyed. Re-place P.K.N. with 5/8" x 18" re-bar. Hit solid object at 18". Did not dig for stone."

The ties for the 1993 INDOT supplied tie card are present and a 5/8 inch rebar with a plastic cap (markings destroyed) was found at approximately 4 inches deep, fitting with the ties. It is believed that this rebar is the same as shown on the tie card.

This corner is also addressed in a survey by the Schneider Corporation recorded in Survey Book 7, page 10, recorded on June 13, 2005 in the Office of the Boone County Recorder. This survey disputes position of the rebar as the corner and holds a railroad spike found 32 feet south of the rebar as the corner. The survey demonstrates that the railroad spike fits better with lines of occupation both at the corner and at the quarter-quarter corner to the north, as established at a mathematical split from the railroad spike to the northwest corner of section 12. A subsequent survey by the same company, recorded in Survey Book 11, page 6, recorded December 30, 2008, recorded June 20, 2008, holds the same position as the corner, but notes that a mag nail was found in the center of an asphalt patch at the same position as the railroad spike. A survey by Weihe Engineers recorded in Survey Book 10, page 24 holds the mag nail at the same position.

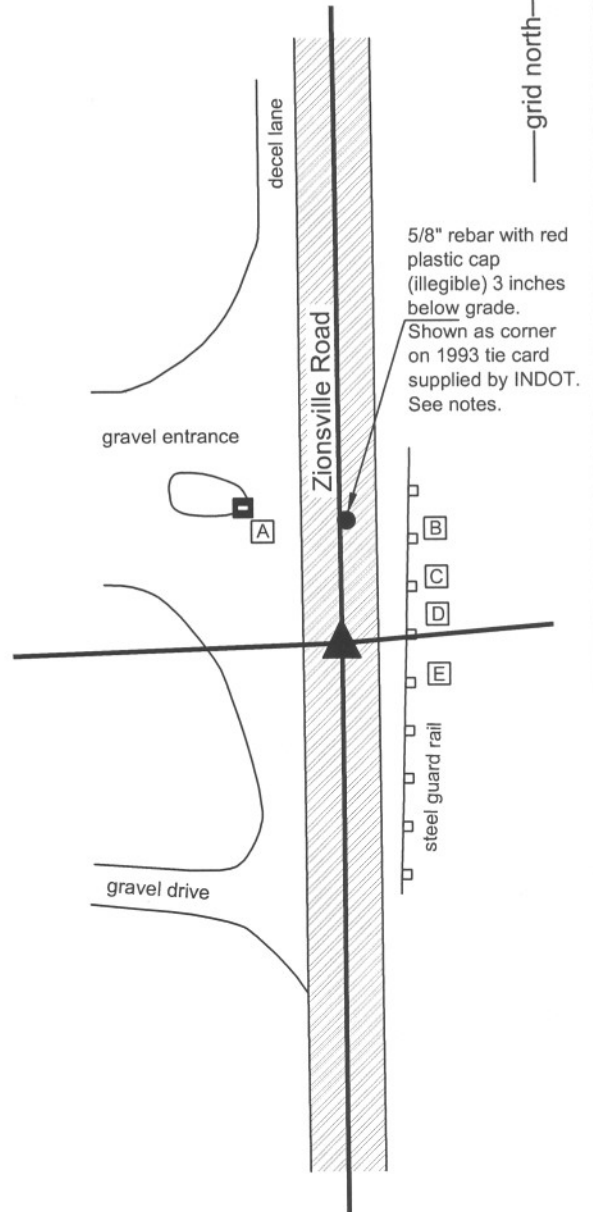
Investigation into the 32 foot discrepancy yielded the conclusion that the position of the railroad spike and mag nail held by the private surveys is a more logical position for the corner that the rebar shown on the INDOT supplied BCS tie card. As noted on the 2005 survey, this position fits better with occupation both as it falls along the E-W half section line and the line determined by the quarter-quarter to the north, as dependent upon the subject quarter corner.

As noted on the 2008 Schneider survey the railroad spike was not present and a mag nail was found in an area of asphalt patch. This corner was monumented on July 31, 2009 and the same condition was found. The mag nail was in the center of the patch area and was also at the intersection of the lines connecting four small "straddle" nails on each respective side of the hole. It appears that a small area had been excavated but it is not known who did this or when. This corner falls in an area of fill in the immediate vicinity of a large culvert under the road. It is considered highly likely that a corner stone, if present would have been removed during the process of installing the culvert, if not before. Hence, significant excavation was not performed. The mag nail found in the position previously marked by the railroad spike was held as marking the corner. The mag nail was removed and a harrison monument was set in its place. The 1993 tie card is considered to be incorrect.

This corner was originally established as a wood post in late June or early July, 1821.

CORNER WITNESS DETAIL

SCALE 1" = 50'

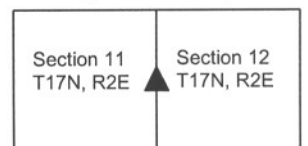


Kenneth E. Hedge
 Kenneth E. Hedge, County Surveyor

James S. Swift
 James S. Swift, IN LS 20200054

July 14, 2010

Eagle Township



SECTION CORNER RECORD

SE 800-1000

BOONE COUNTY SURVEYOR'S OFFICE

State Plane grid coordinates NAD83 (NSRS 2007):

North: 1704294.65 East: 3178400.49 (U.S. survey feet)

Type of monument: Harrison, 4" disk 'Section Corner'

Depth: flush with the adjacent ground.

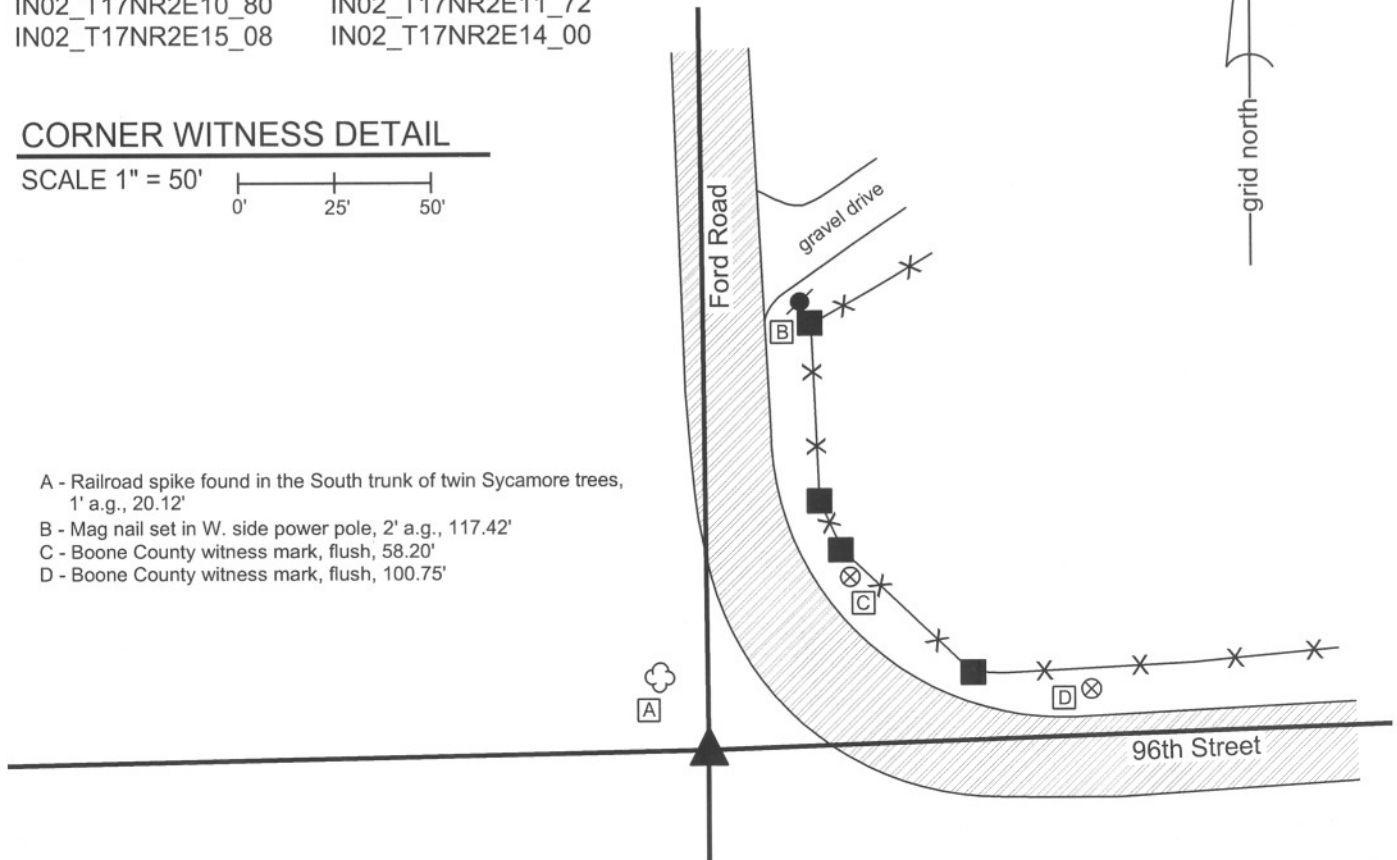
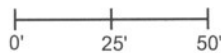
Indiana tie card references:

IN02_T17NR2E10_80 IN02_T17NR2E11_72

IN02_T17NR2E15_08 IN02_T17NR2E14_00

CORNER WITNESS DETAIL

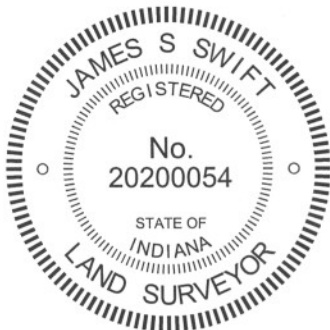
SCALE 1" = 50'



- A - Railroad spike found in the South trunk of twin Sycamore trees, 1' a.g., 20.12'
- B - Mag nail set in W. side power pole, 2' a.g., 117.42'
- C - Boone County witness mark, flush, 58.20'
- D - Boone County witness mark, flush, 100.75'

The Harrison monument was set in the position of a 3/4 inch diameter iron pipe which formerly marked the corner. Tie sheets provided by the Marion County Surveyor's Office show pipes at two different locations for this corner. A tie card dated June 5, 1985 shows the corner as a 3/4 inch iron pipe with references to previous ties of 1975 and 1981. A subsequent tie card, dated September 20, 1994 shows the corner as a 1-1/2 inch iron pipe. Several surveys in the Boone County Recorder's Office show the corner as a 3/4 inch iron pipe. The 1-1/2 inch pipe is also shown on some recorded surveys. A survey by the Schneider Engineering Corporation dated December 12, 1988 and recorded in Survey Book 1, page 3 in the Boone County Recorder's Office shows the corner as a 3/4 inch iron pipe and shows a 1-1/4 inch pipe found 3.8 feet west.

In 2007, an 1-1/2 inch diameter iron pipe was found with a rebar bearing a plastic cap driven into it. This pipe fit with the 1994 distance tie and was present until 2010. Reconstruction of the corner from the 1985 distance ties yielded a position 3.8 feet east of the found pipe. No monument was found at this position. Reconstruction of the position of the 3/4 inch pipe from information found on private surveys and relative to the corners to the north and west yielded the same position for the corner as the 1985 ties. It is clear that the 3/4 inch iron pipe had been accepted as the corner but was removed. The 1-1/2 inch pipe is 3.8 feet west. This monument has also been accepted as the corner for private surveys but is believed to be a newer monument. In 1988 both monuments were present. In cooperation and agreement with the Marion County Surveyor's office, the position of the 3/4 inch pipe was held as marking the corner. This position was monumented by a Harrison monument on November 12, 2010 and represents the corner as demonstrated on this document.



Kenneth E. Hedge
 Kenneth E. Hedge, County Surveyor

James S. Swift
 James S. Swift, IN LS 20200054
 March 30, 2012

Eagle Twp
 Boone Cnty

Pike Twp
 Marion Cnty

Eagle Township

Section 10 T17N, R2E	Section 11 T17N, R2E
Section 15 T17N, R2E	Section 14 T17N, R2E